

V&V Reference Report

L2 ASCDS Version : 7.6.9

Observation 2418 - L2 Version 001
Chandra X-Ray Center

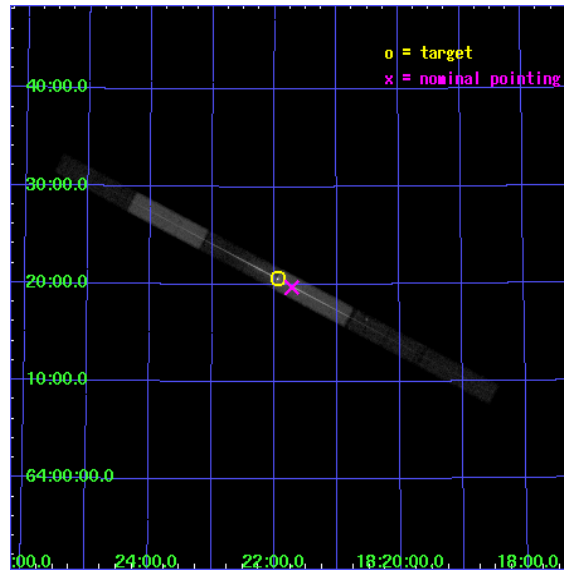
L2 Processing Date : Nov 6 2006

Contents

1	Front	2
2	OBI	3
2.1	OBI	3
2.1.1	Images	3
2.1.2	Bias	3
2.1.3	Parameters	4
2.1.4	Events	4
2.2	Compared Parameters	5
2.3	Aspect	6
2.4	Star Slots	9
2.4.1	Slot 3	9
2.4.2	Slot 4	10
2.4.3	Slot 5	11
2.4.4	Slot 6	12
2.4.5	Slot 7	13
2.5	FID Slots	14
2.5.1	Slot 0	14
2.5.2	Slot 1	15
2.5.3	Slot 2	16
3	Gratings	17
3.1	LETG Arm	17
A	Summary	19
A.1	Status	19
A.2	Comments	19

1 Front

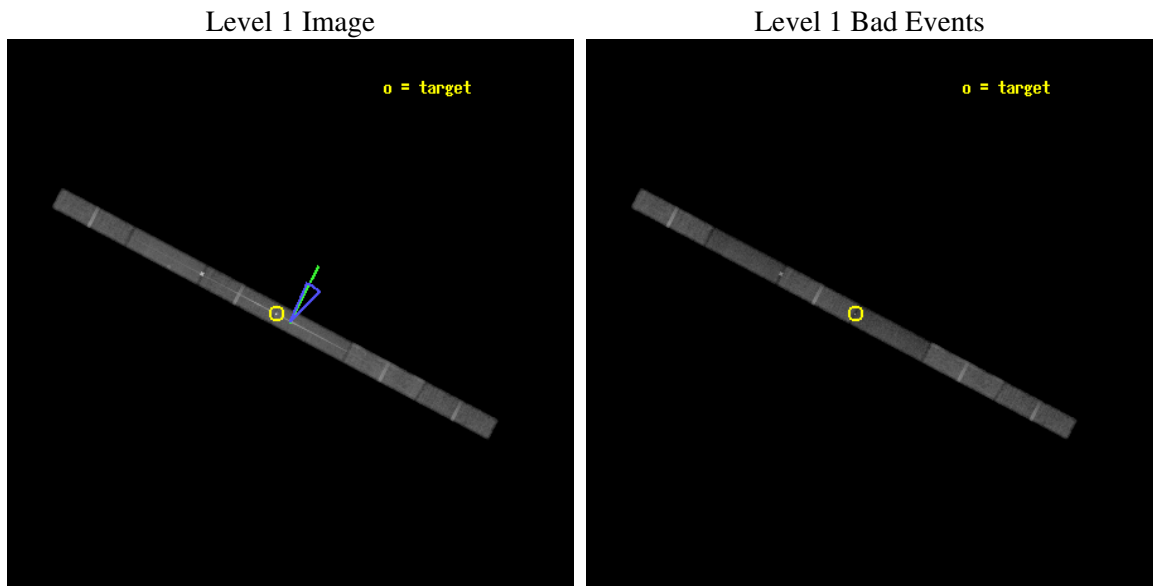
seq_num	700376
obs_id	2418
title	FINDING THE BARYONS IN THE LOW REDSHIFT UNIVERSE.
observer	Prof. Smita Mathur
object	H1821+643
dtcycle	0
cycle	P
ra_targ	275.48875
dec_targ	64.343444
ra_nom	275.43088892101
dec_nom	64.328446244635
roll_nom	27.676674918712
revision	3
ontime	53873.0
livetime	51749.212326136
ontime4	53873.0
ontime5	53873.0
ontime6	53873.0
ontime7	53873.0
ontime8	53873.0
ontime9	53873.0
l2events	180219



2 OBI

2.1 OBI

2.1.1 Images



2.1.2 Bias

Chip 4

Chip 5

Chip 6



Chip 7

Chip 8

Chip 9



2.1.3 Parameters

obi_num	1
ascdsver	7.6.9
caldsver	3.2.3
date	2006-11-04T09:06:08
revision	3

sched_exp_time	53416.564000
ontime	53960.572213158
ontime4	53960.572213158
ontime5	53960.572213158
ontime6	53960.572213158
ontime7	53960.572213158
ontime8	53960.572213158
ontime9	53960.572213158
l1events	724416

2.1.4 Events

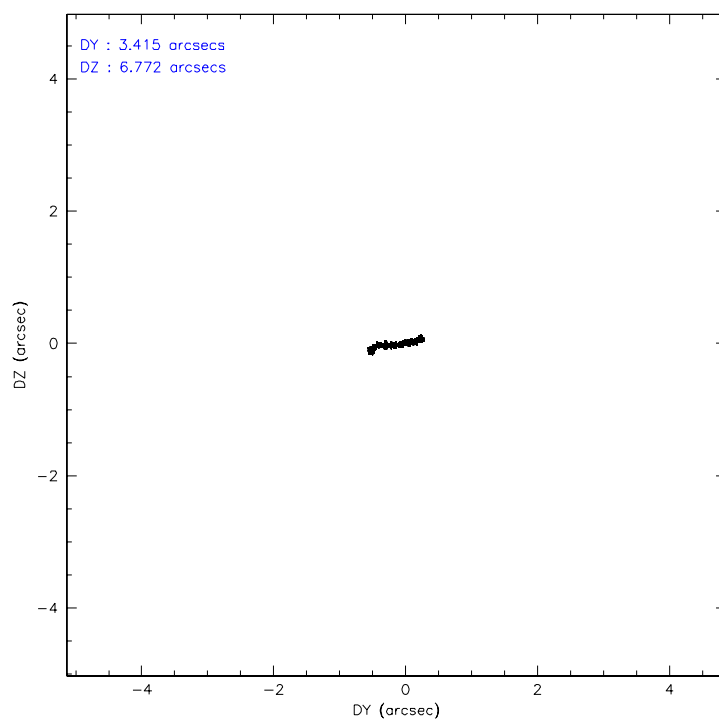
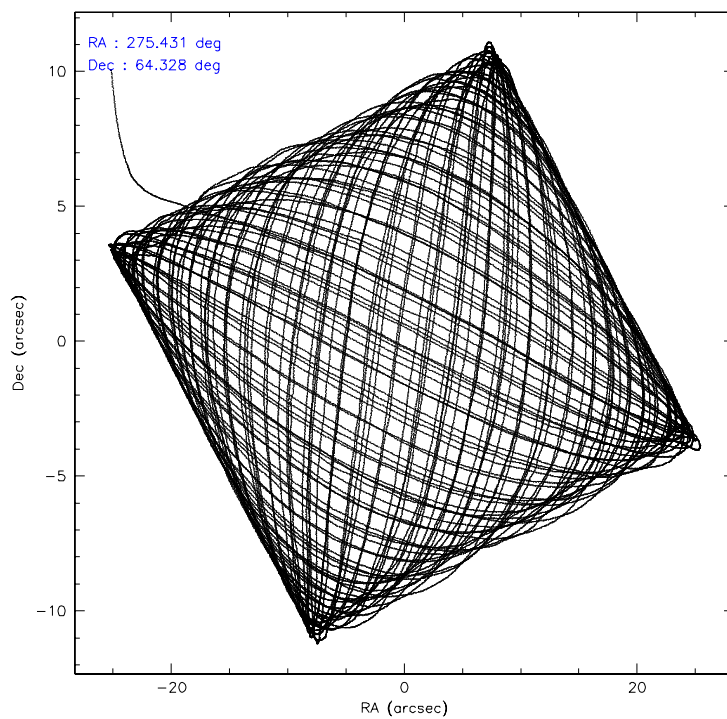
	ccd 4	ccd 5	ccd 6	ccd 7	ccd 8	ccd 9
level 1 events	111475	124819	118652	137648	135599	96223
rejected events	100027	64494	91156	61037	110469	84945
rejected %	89%	51%	76%	44%	81%	88%

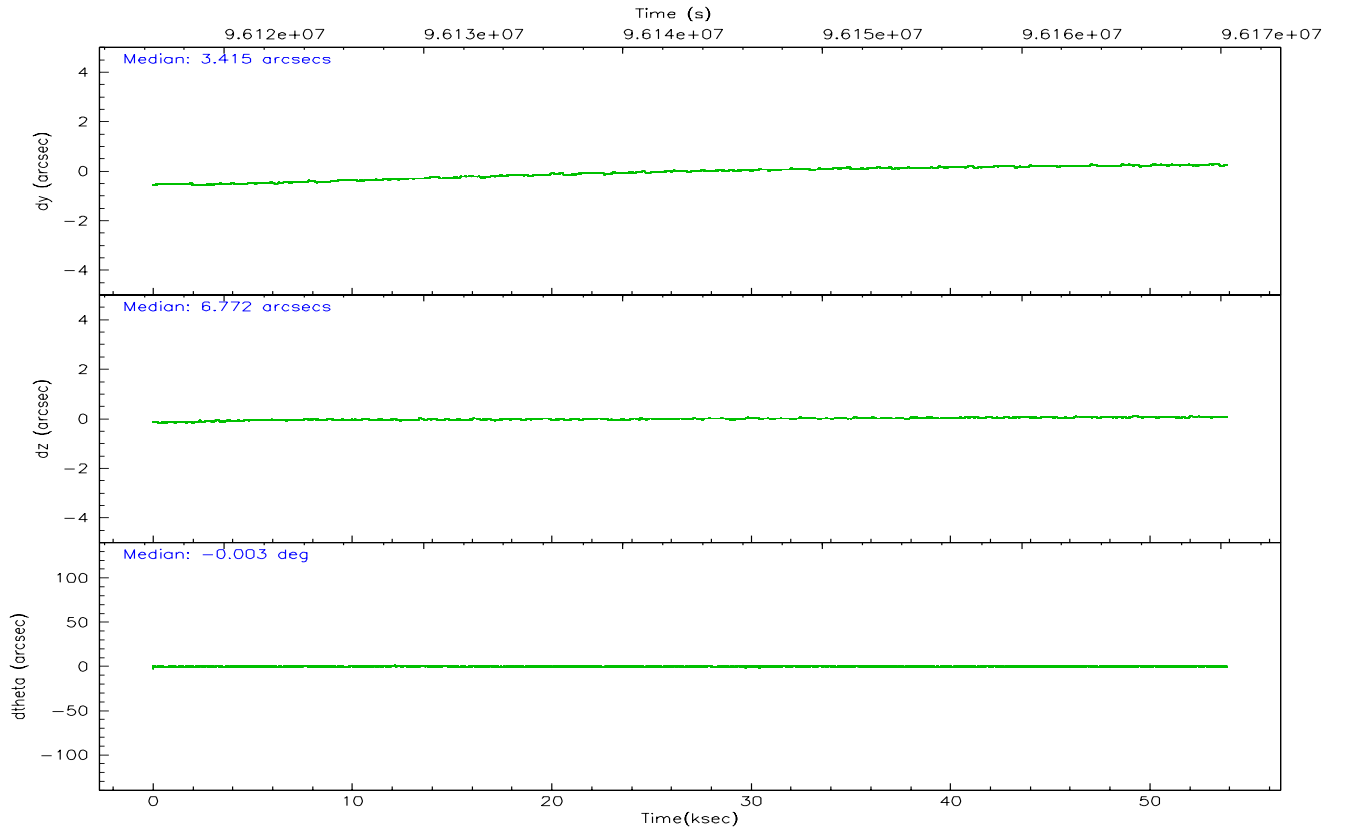
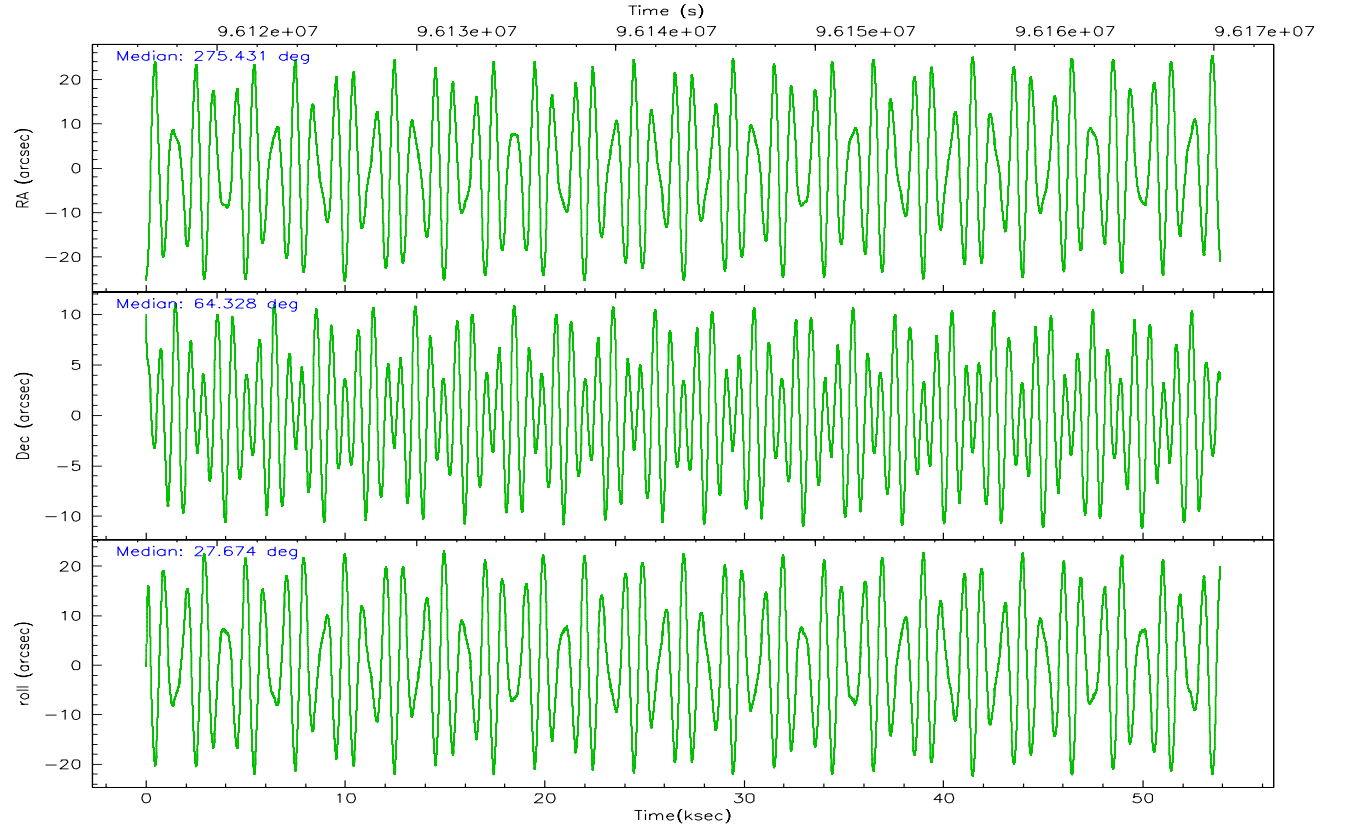
	ccd 4	ccd 5	ccd 6	ccd 7	ccd 8	ccd 9
grade 0 events	4325	10215	17084	11859	7584	4140
	3%	8%	14%	8%	5%	4%
grade 1 events	34	1526	53	163	41	21
	0%	1%	0%	0%	0%	0%
grade 2 events	2251	15643	3627	18365	4627	1952
	2%	12%	3%	13%	3%	2%
grade 3 events	1589	3078	2223	7603	3197	1696
	1%	2%	1%	5%	2%	1%
grade 4 events	1546	3049	2154	7549	2960	1584
	1%	2%	1%	5%	2%	1%
grade 5 events	2833	7410	3146	8675	4071	3216
	2%	5%	2%	6%	3%	3%
grade 6 events	1753	28466	2445	31355	6795	1931
	1%	22%	2%	22%	5%	2%
grade 7 events	97144	55432	87920	52079	106324	81683
	87%	44%	74%	37%	78%	84%

2.2 Compared Parameters

Parameter	Planned	Actual	Parameter	Planned	Actual
Instrument	ACIS	ACIS	Obspar format version number	6	6
Detector	ACIS-456789	ACIS-456789	Obspar file type	PREDICTED	ACTUAL
Grating	LETG	LETG	Obspar update status	NONE	UPDATED
Data mode	FAINT	FAINT	Number of optional ACIS chips dropped	0	0
Observation mode	POINTING	POINTING	On-chip summing requested	N	N
Pointing RA	275.397649	275.4308889210131	Subarray requested	CUSTOM	1/4
Pointing Dec	64.305215	64.32844624463472	Subarray start row	49	49
Pointing Roll	27.550007	27.67667491871229	Subarray row count	256	256
Roll angle	35.000000	35.000000	Alternating exposures requested	N	N
Roll tolerance	10.000000	10.000000	Primary exposure time	0.000000	1
Roll constraint allows 180D rotation	N	N			
SIM focus pos (mm)	-0.684267	-0.6828225247311905			
SIM defocus (mm)	0	0.001444936568705701			
SIM translation stage pos (mm)	-182.132523	-182.1344861297048			
SIM translation stage offset (mm)	-8	-7.998036453302973			
Observation start time	96116889.184000	96115796.4683			
Observation start date	2001-01-17T11:07:05	2001-01-17T10:49:56			
Observation end time	96170306.184000	96170620.132906			
Observation end date	2001-01-18T01:57:22	2001-01-18T02:03:40			
Read mode	TIMED	TIMED			

2.3 Aspect



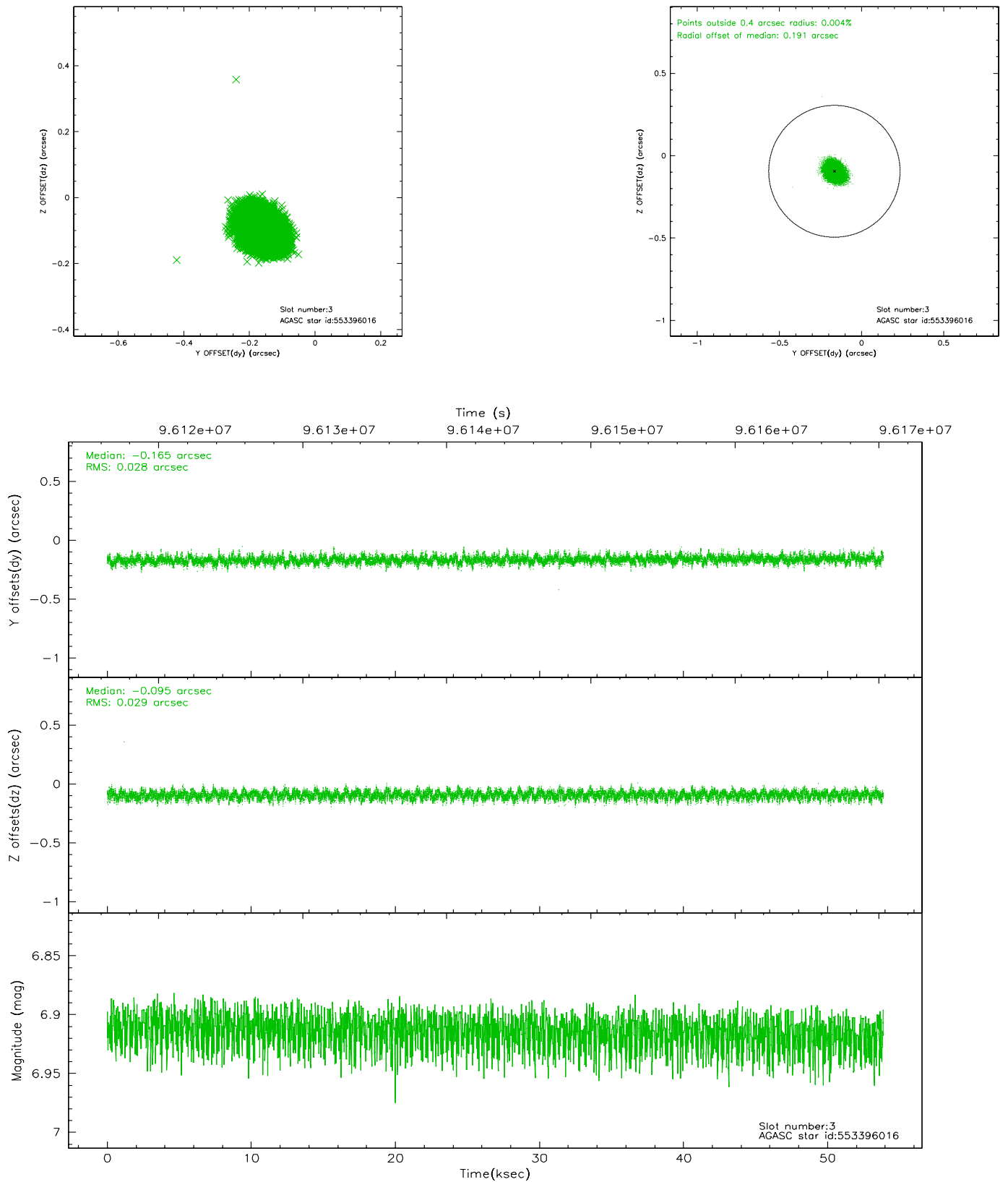


Slot Statistics

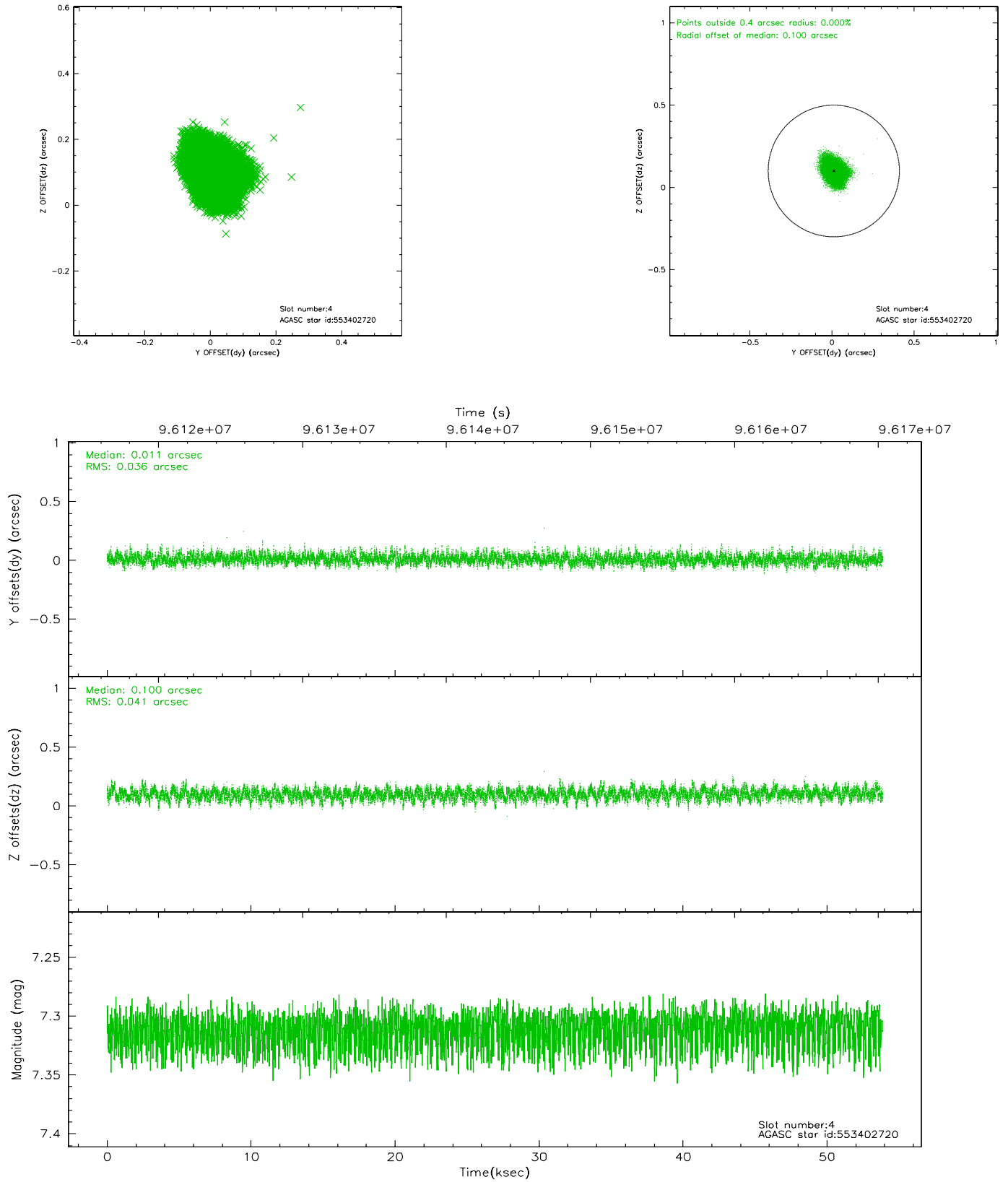
slot	status	id	mag	n_pts	med_dy	med_dz	dr1	dr2	ra	dec	mean_y	mean_z
0	FID	ACIS-S-2	7.09	13140	-0.005	-0.083	0.009	0.015	0.000000	0.000000	-755.45	-1892.77
1	FID	ACIS-S-4	7.18	13139	-0.044	0.024	0.009	0.015	0.000000	0.000000	2157.82	15.79
2	FID	ACIS-S-5	7.23	13140	0.017	0.067	0.010	0.018	0.000000	0.000000	-1808.29	9.52
3	GUIDE	553396016	6.91	26280	-0.165	-0.095	0.043	0.071	276.292154	64.838422	2106.47	1077.47
4	GUIDE	553402720	7.31	26281	0.011	0.100	0.057	0.095	275.081751	64.202988	-607.85	-96.02
5	GUIDE	551697064	8.03	26280	0.067	-0.013	0.054	0.089	274.138245	64.538359	-1330.45	1662.84
6	GUIDE	551695040	8.46	26280	0.070	-0.057	0.053	0.086	273.859972	64.159739	-2367.26	677.47
7	GUIDE	553404184	8.64	26275	0.014	0.065	0.068	0.110	276.556964	64.060570	1219.35	-1610.14

2.4 Star Slots

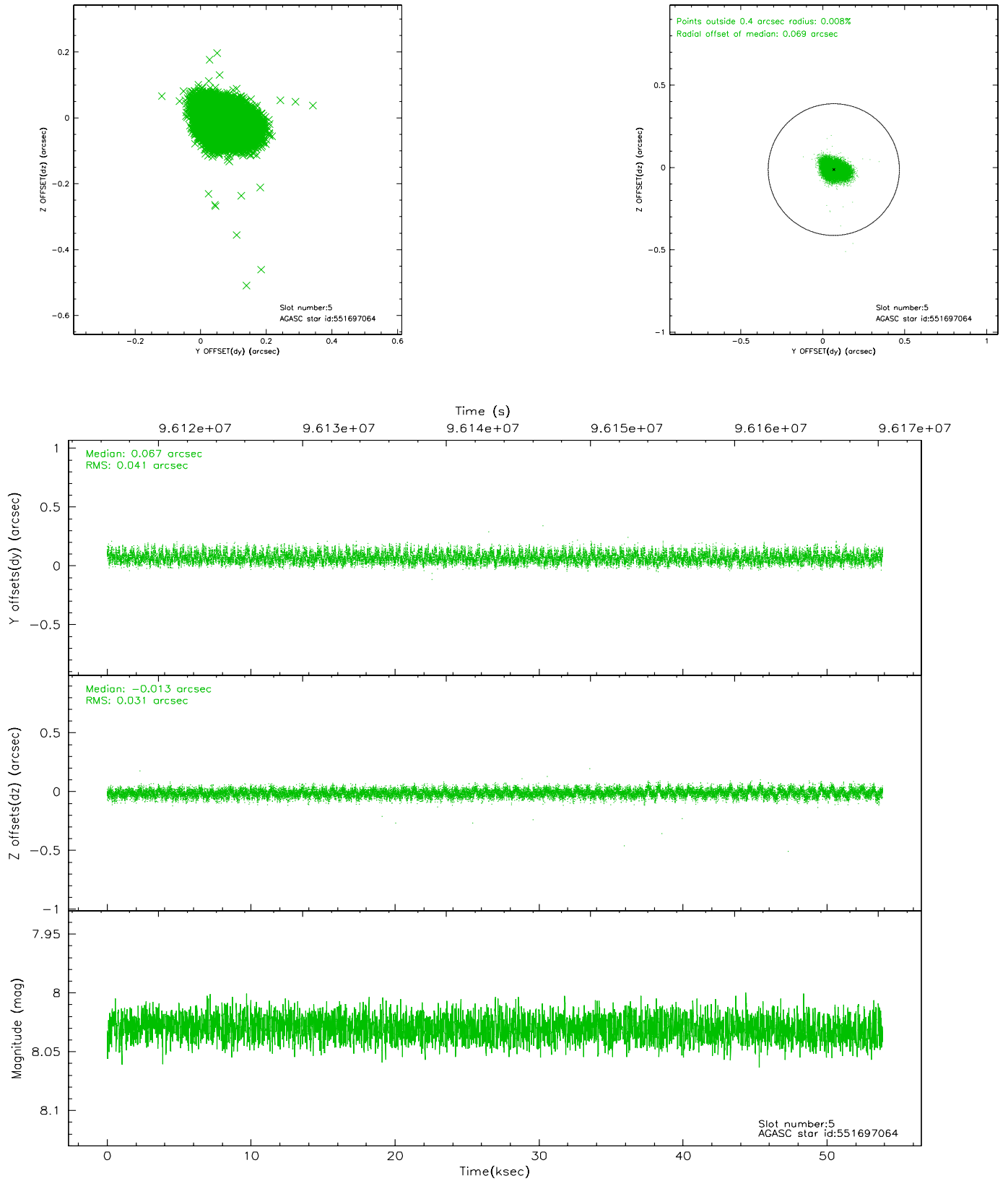
2.4.1 Slot 3



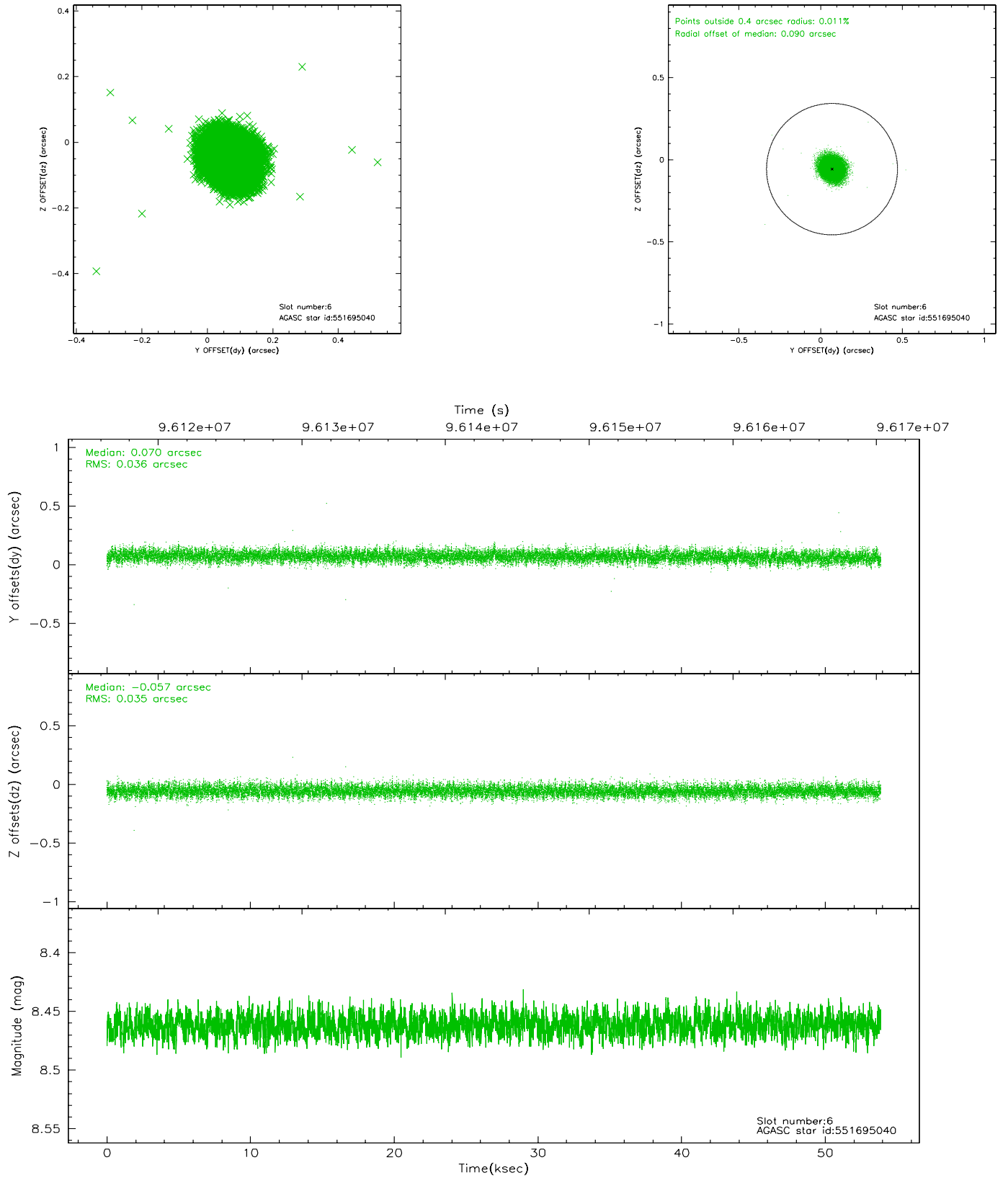
2.4.2 Slot 4



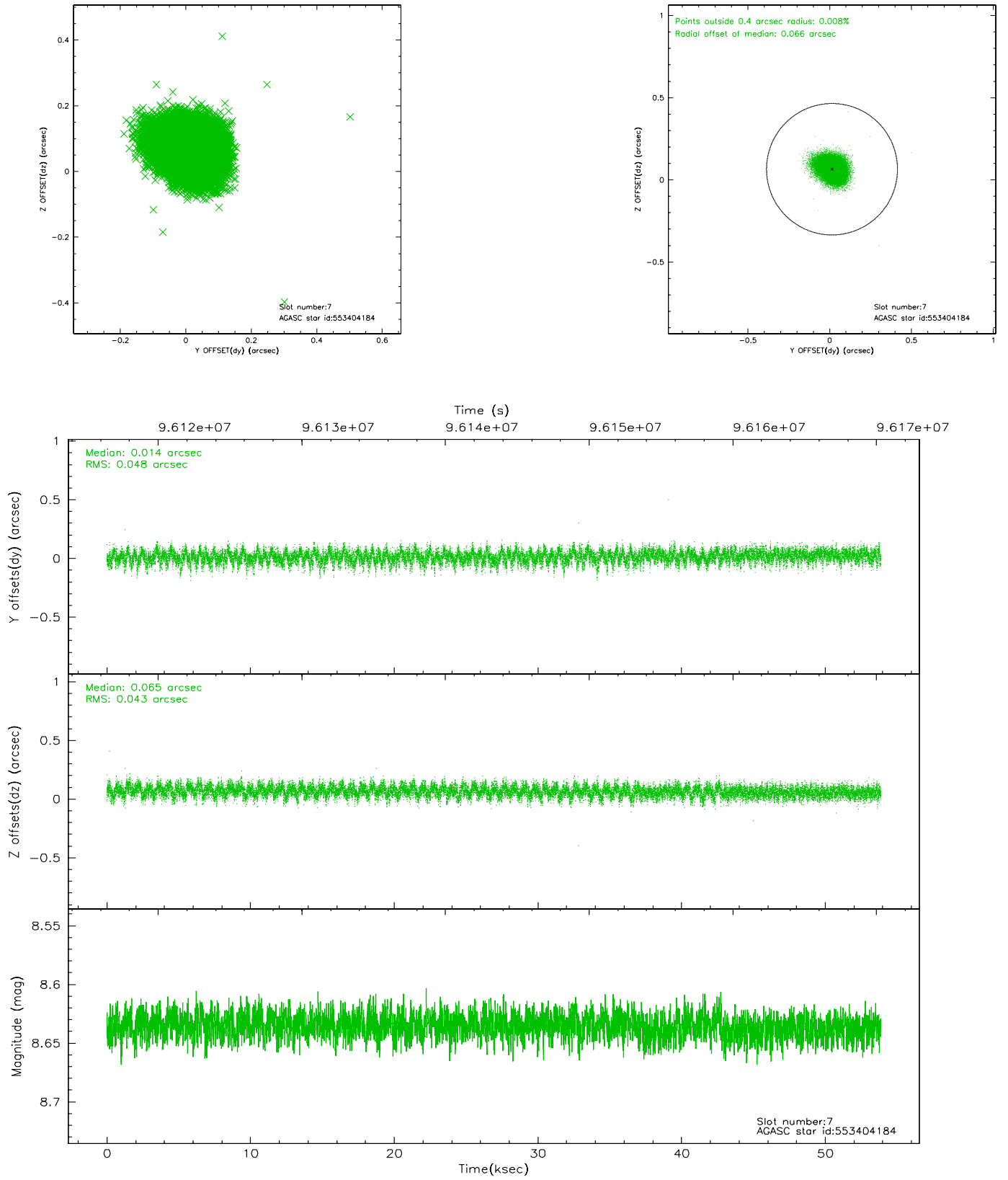
2.4.3 Slot 5



2.4.4 Slot 6

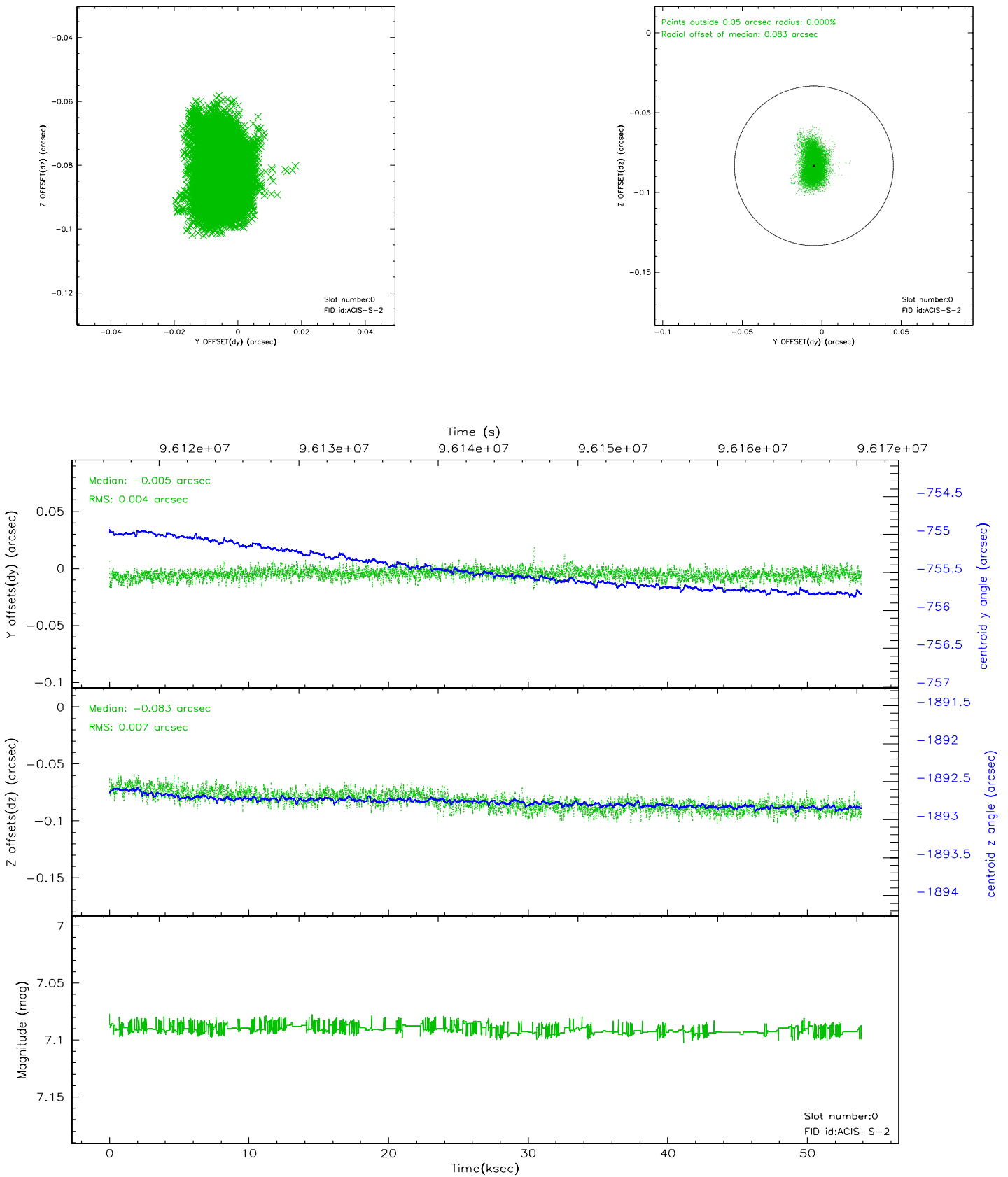


2.4.5 Slot 7

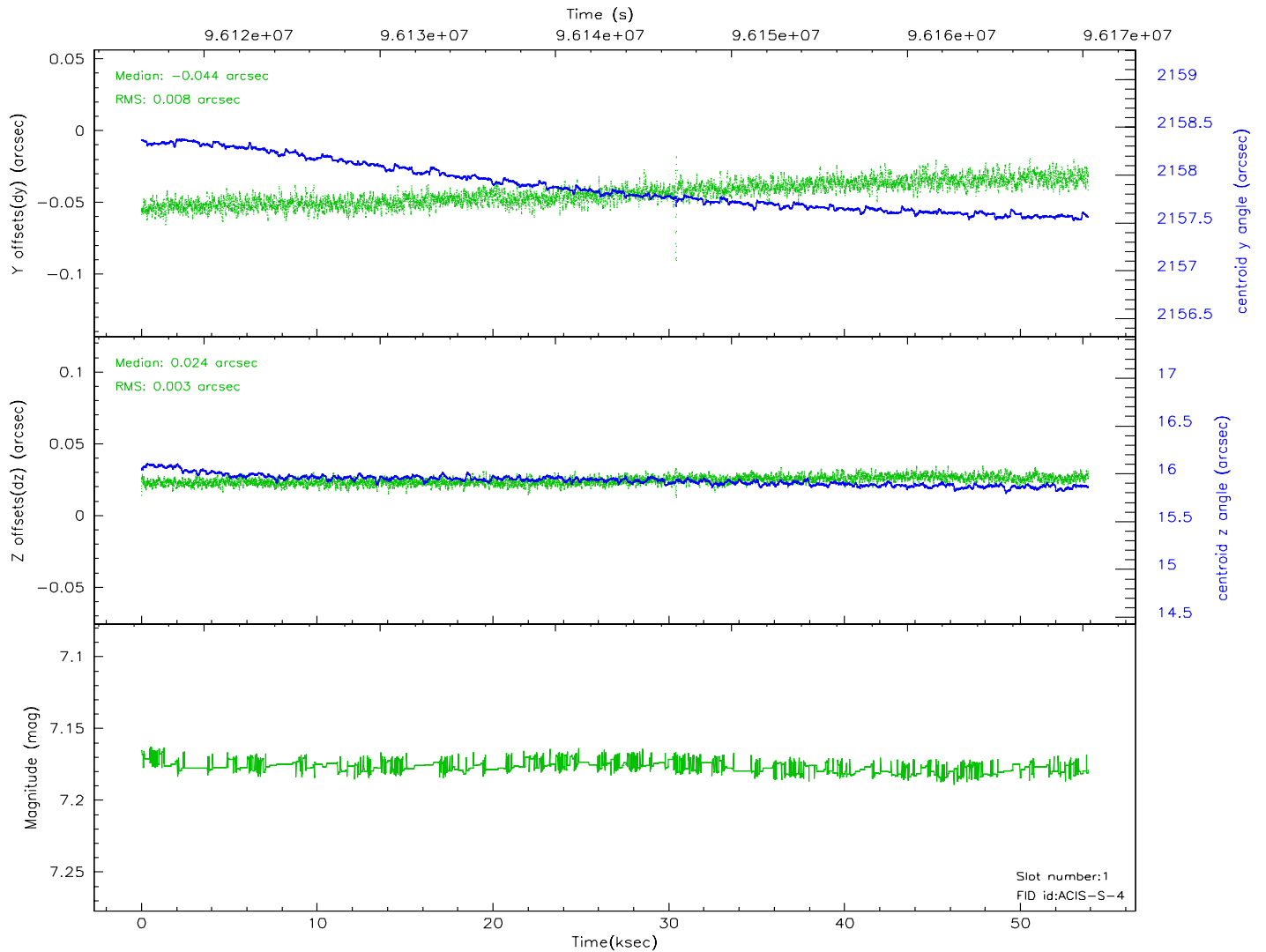
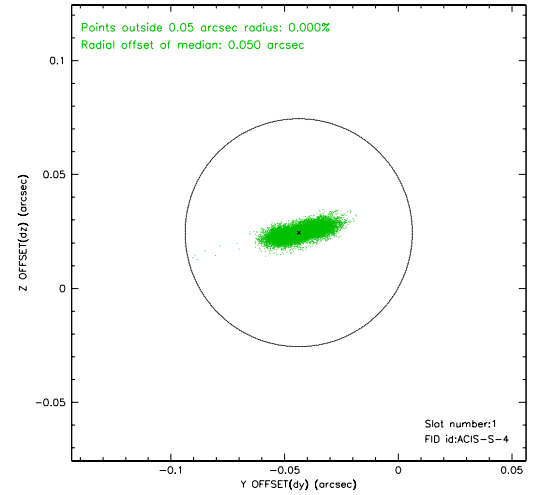
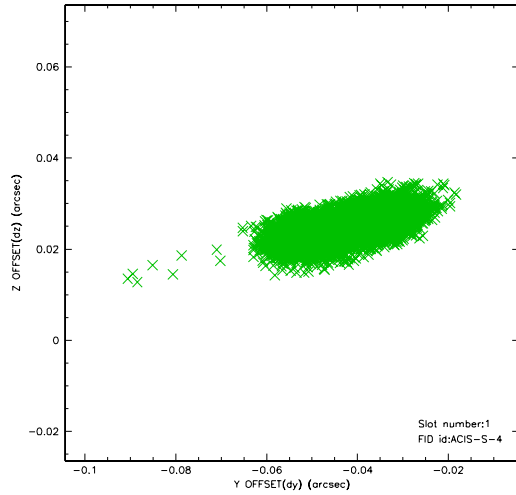


2.5 FID Slots

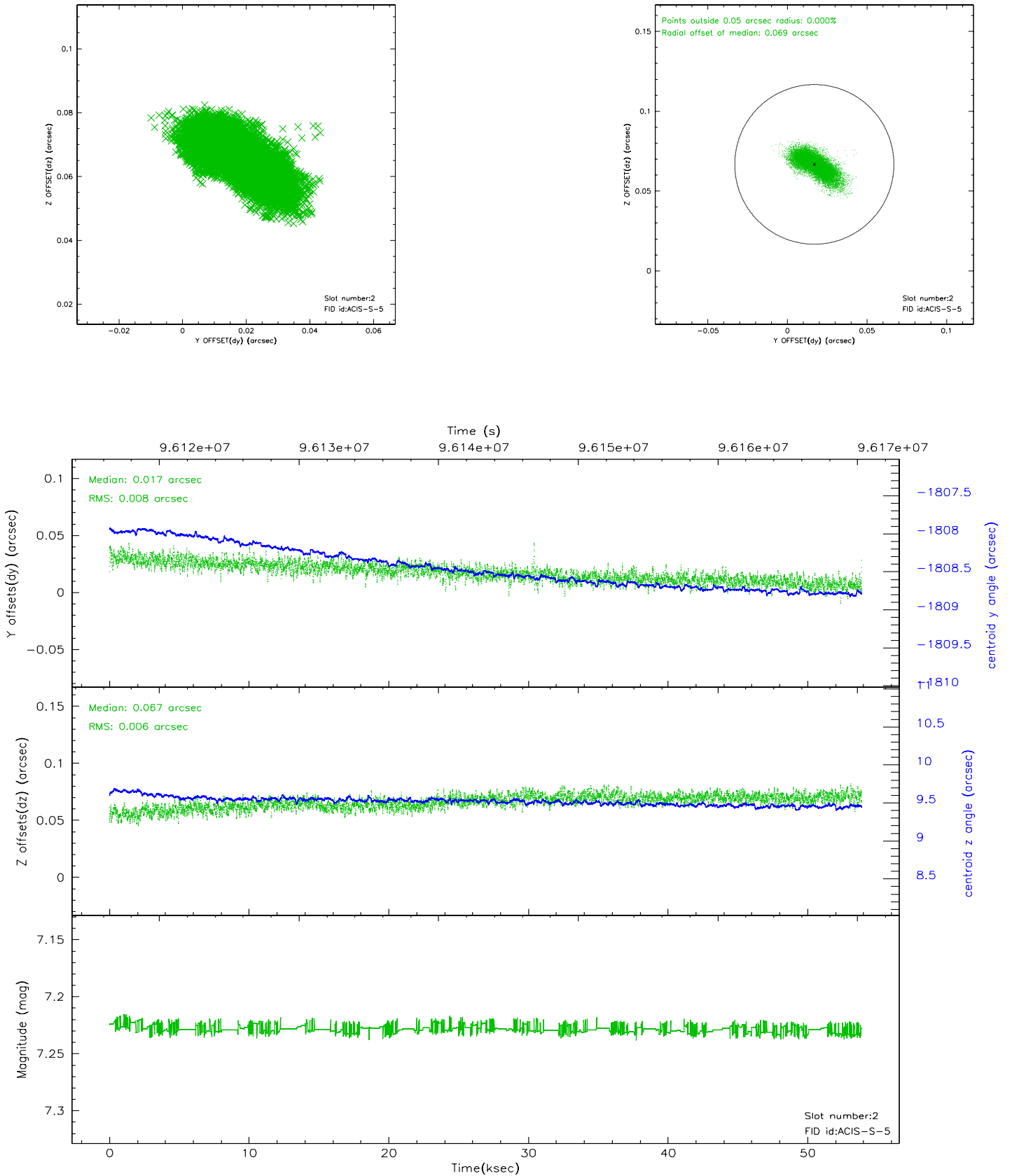
2.5.1 Slot 0



2.5.2 Slot 1

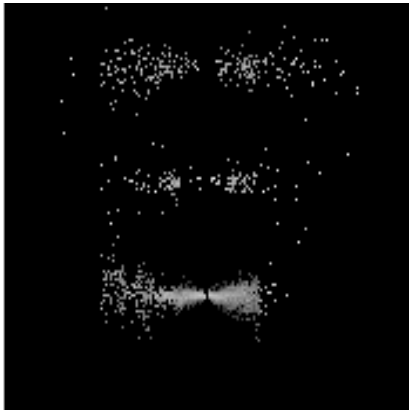


2.5.3 Slot 2

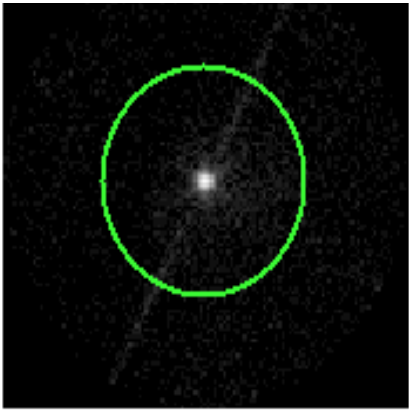


3 Gratings

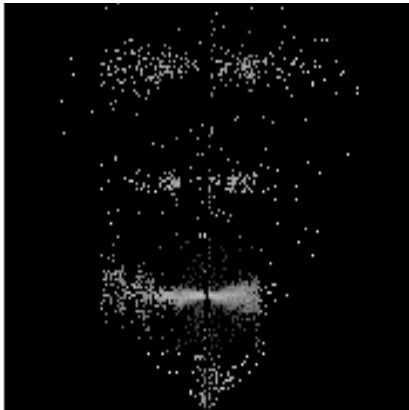
3.1 LETG Arm



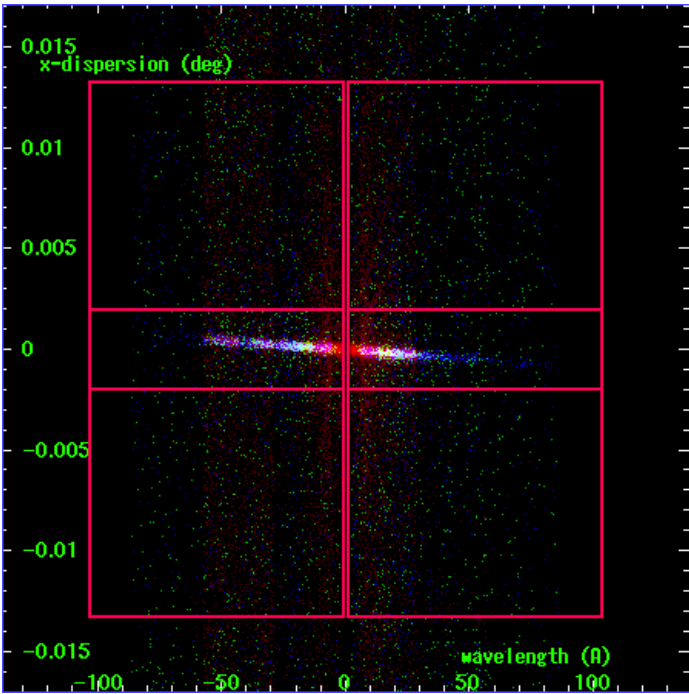
LETG Order Sort 123



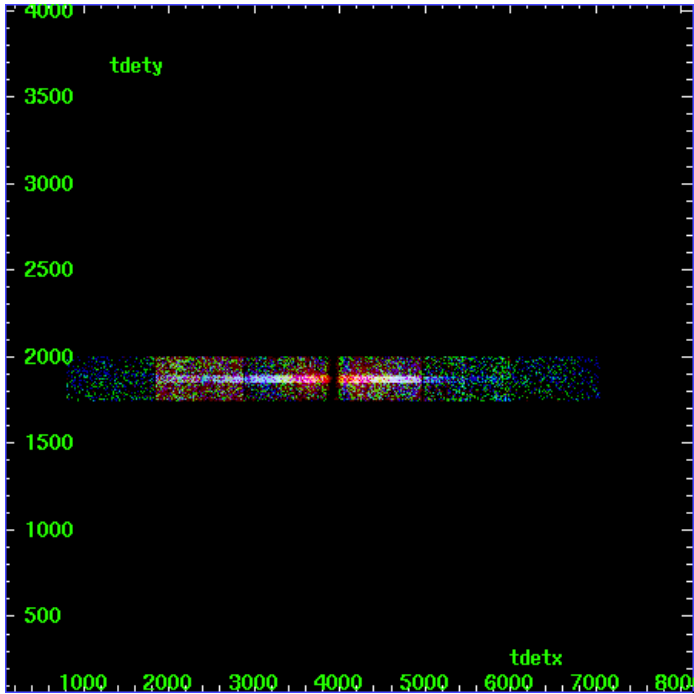
LETG Zero Order



LETG Order Sort ALL

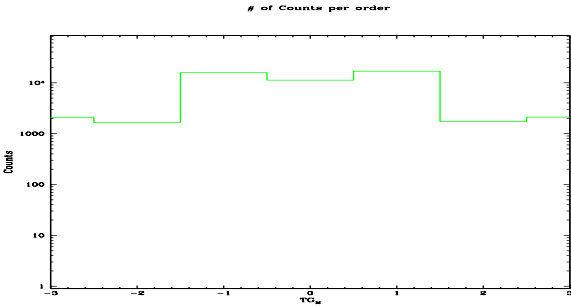


Spot Image LETG

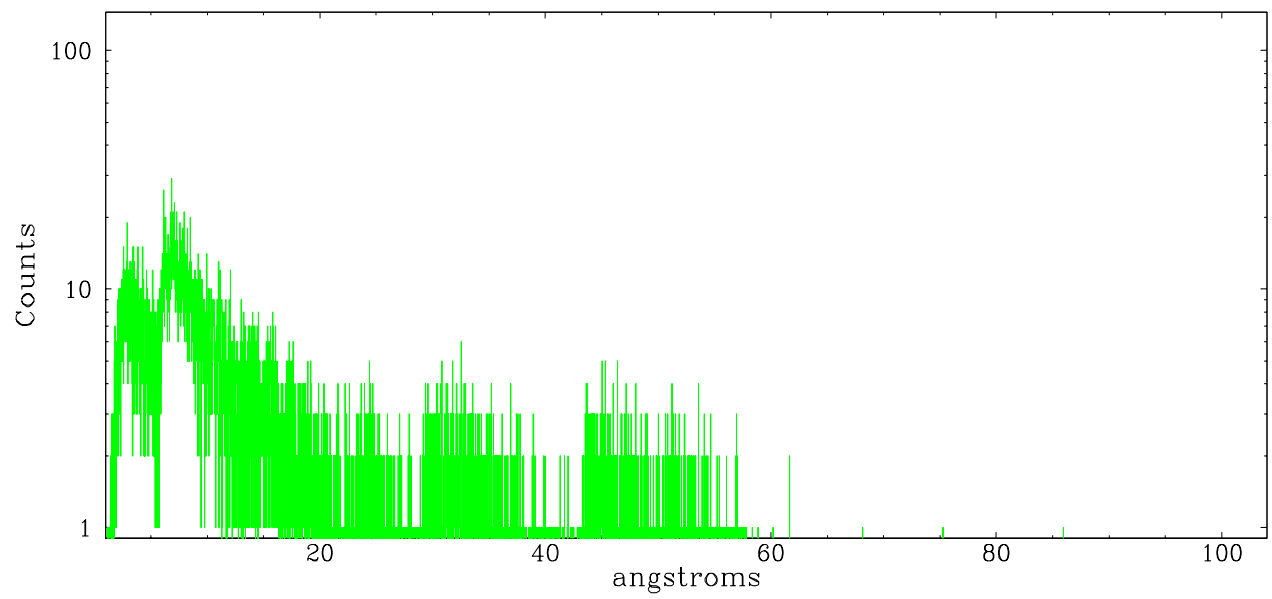


Full Detector LETG

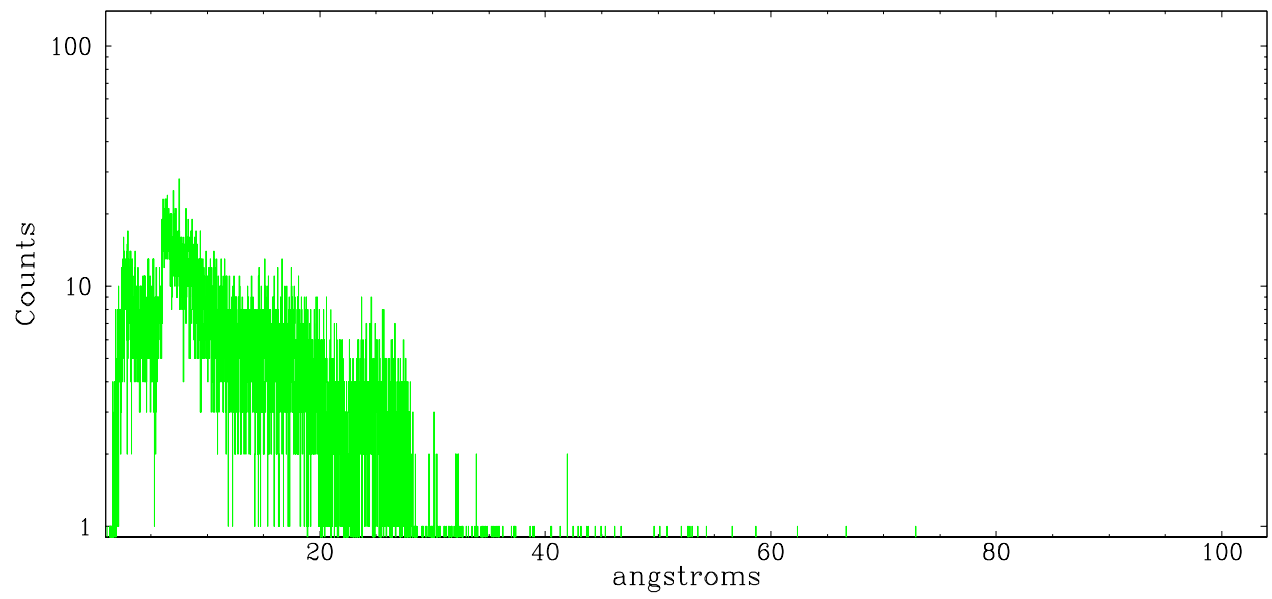
	order -3	order -2	order -1	order 0	order 1	order 2	order 3
Events	2078	1653	15691	11240	16809	1722	2104



leg order -1



leg order +1



A Summary

A.1 Status

V&V Scientist	Beth Sundheim
V&V Date (YYYY-MM-DD)	2006.11.06
V&V Edition	1
V&V Disposition and Status	OK
V&V Charge Time	53.873

A.2 Comments

Roll constraint OK.