

V&V Reference Report

L2 ASCDS Version : 8.4.5

Observation 2198 - L2 Version 3
Chandra X-Ray Center

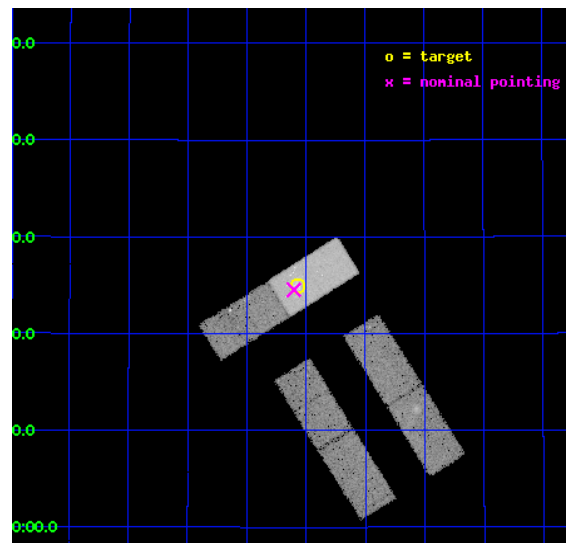
L2 Processing Date : Sep 7 2012

Contents

1	Front	2
2	OBI	3
2.1	OBI	3
2.1.1	Images	3
2.1.2	Bias	3
2.1.3	Parameters	4
2.1.4	Events	4
2.2	Compared Parameters	5
2.3	Aspect	6
2.4	Star Slots	9
2.4.1	Slot 3	9
2.4.2	Slot 4	10
2.4.3	Slot 5	11
2.4.4	Slot 6	12
2.4.5	Slot 7	13
2.5	FID Slots	14
2.5.1	Slot 0	14
2.5.2	Slot 1	15
2.5.3	Slot 2	16
A	Summary	17
A.1	Status	17
A.2	Comments	17

1 Front

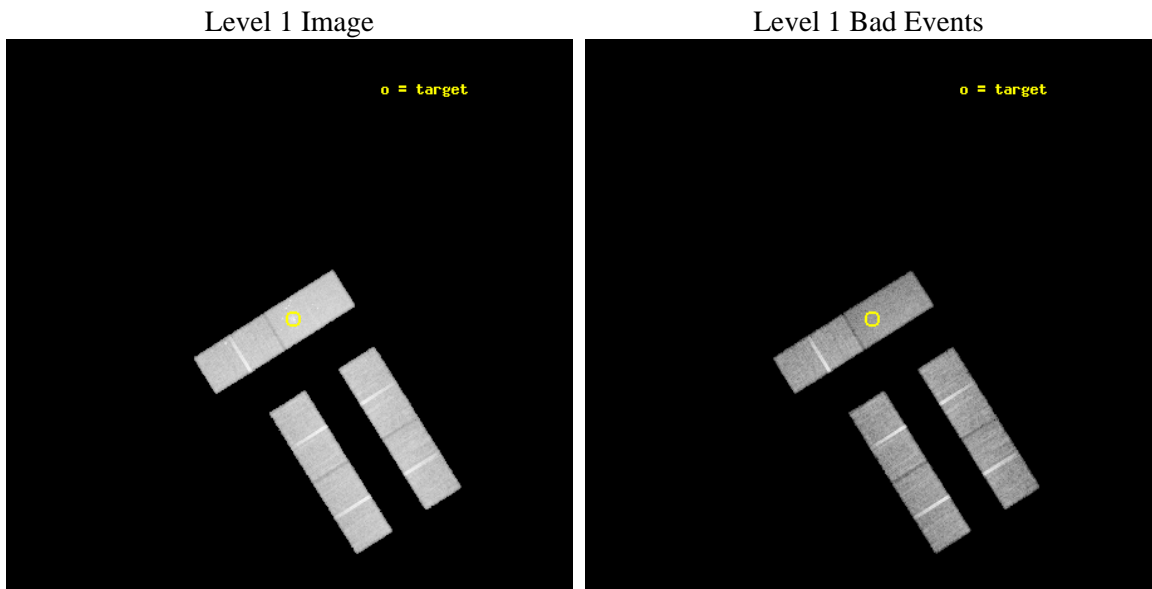
seq_num	700388	Sequence number
obs_id	2198	Observation id
title	CHANDRA OBSERVATIONS OF NEARBY LLAGN: STARBURSTS OR AGNS ?	Proposa
observer	Dr Andreas Zezas	Principal investigator
object	NGC 7331	Source name
dtcycle	0	
cycle	P	events from which exps? Prim/Second/Both
ra_targ	339.267083	Observer's specified target RA [deg]
dec_targ	34.415556	Observer's specified target Dec [deg]
ra_nom	339.27588978535	Nominal RA [deg]
dec_nom	34.408923079511	Nominal Dec [deg]
roll_nom	327.87357127081	Nominal Roll [deg]
revision	3	Processing version of data
ontime	30131.999950126	Sum of GTIs [s]
livetime	29460.304996212	Livetime [s]
ontime0	30131.999950126	Sum of GTIs [s]
ontime1	30131.999950126	Sum of GTIs [s]
ontime2	30131.999950126	Sum of GTIs [s]
ontime3	30131.999950126	Sum of GTIs [s]
ontime6	30131.999950126	Sum of GTIs [s]
ontime7	30131.999950126	Sum of GTIs [s]
l2events	102163	Number of level 2 events



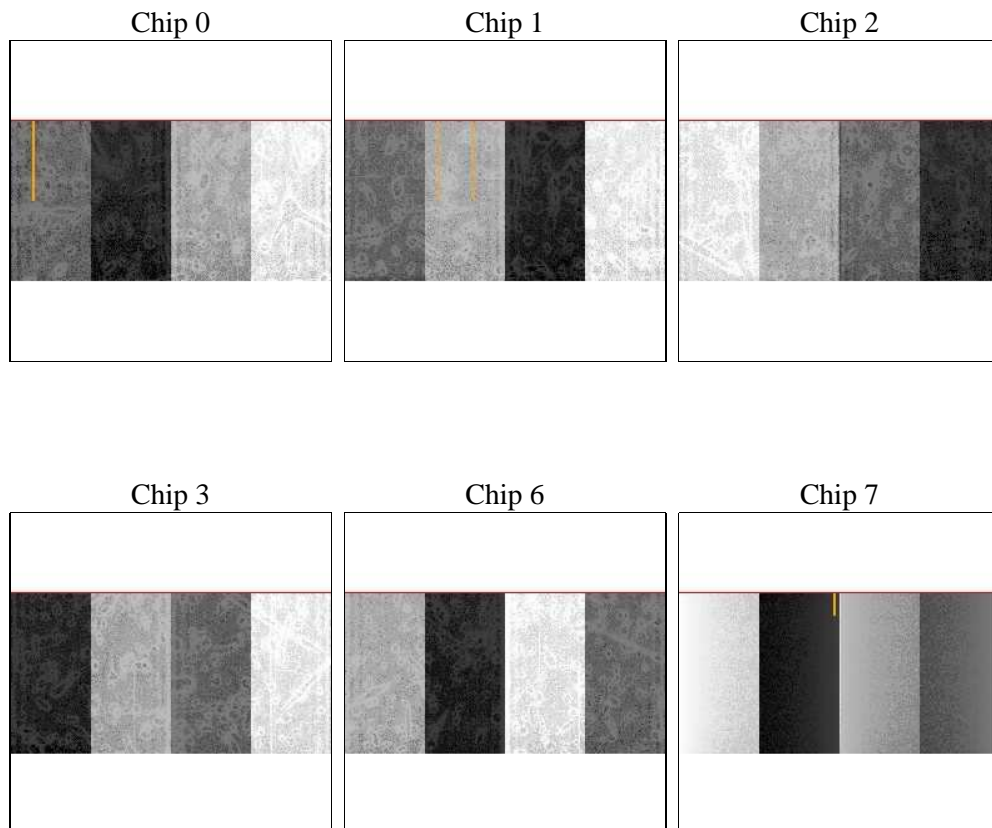
2 OBI

2.1 OBI

2.1.1 Images



2.1.2 Bias



2.1.3 Parameters

obi_num	0	Obi number	sched_exp_time	30000.000000	[s] Scheduled observation exposure time
ascdsver	8.4.5	Processing system revision	ontime	30131.999950126	Sum of GTIs [s]
caldsver	4.5.1.1	 	ontime0	30131.999950126	Sum of GTIs [s]
date	2012-09-07T06:11:57	Date and time of file creation	ontime1	30131.999950126	Sum of GTIs [s]
revision	3	Processing version of data	ontime2	30131.999950126	Sum of GTIs [s]
			ontime3	30131.999950126	Sum of GTIs [s]
			ontime6	30131.999950126	Sum of GTIs [s]
			ontime7	30131.999950126	Sum of GTIs [s]
			l1events	616774	Number of level 1 events

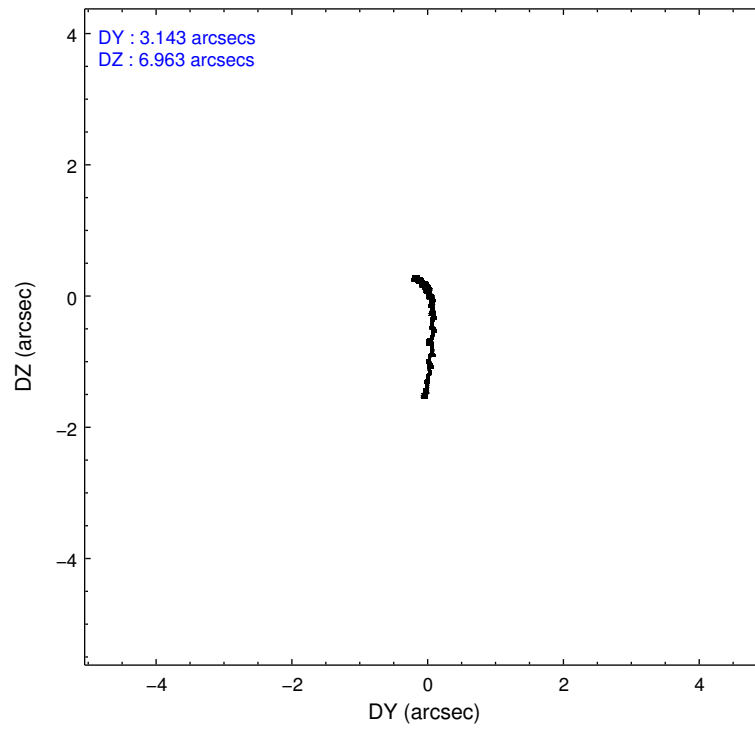
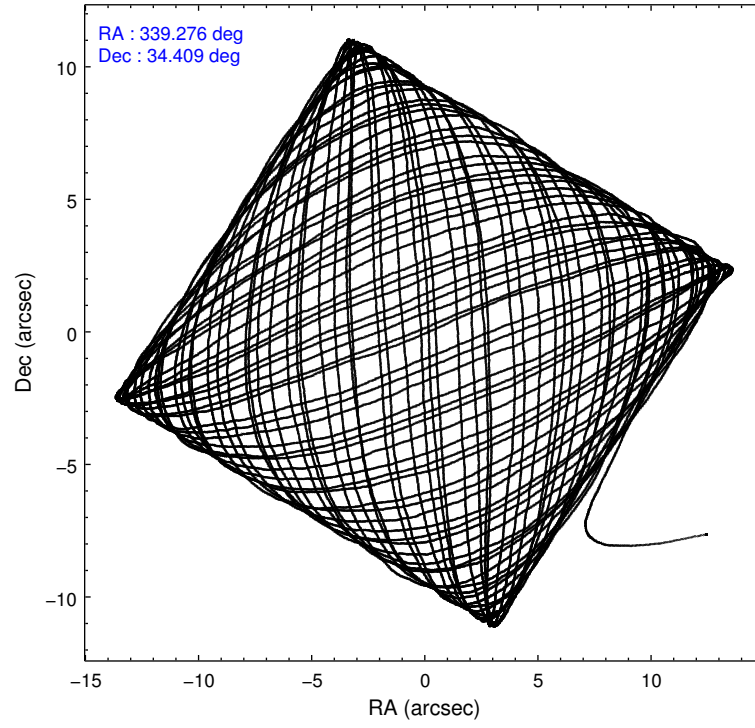
2.1.4 Events

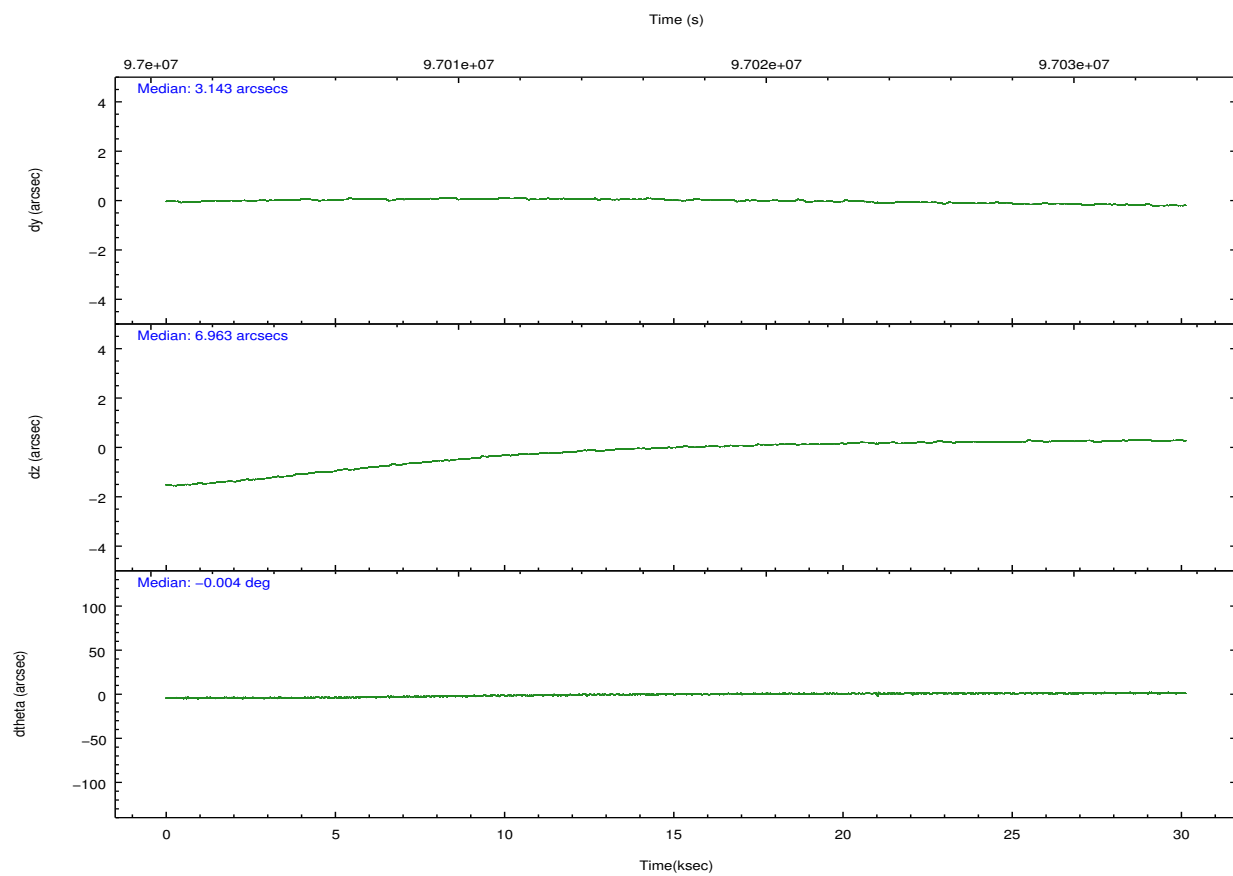
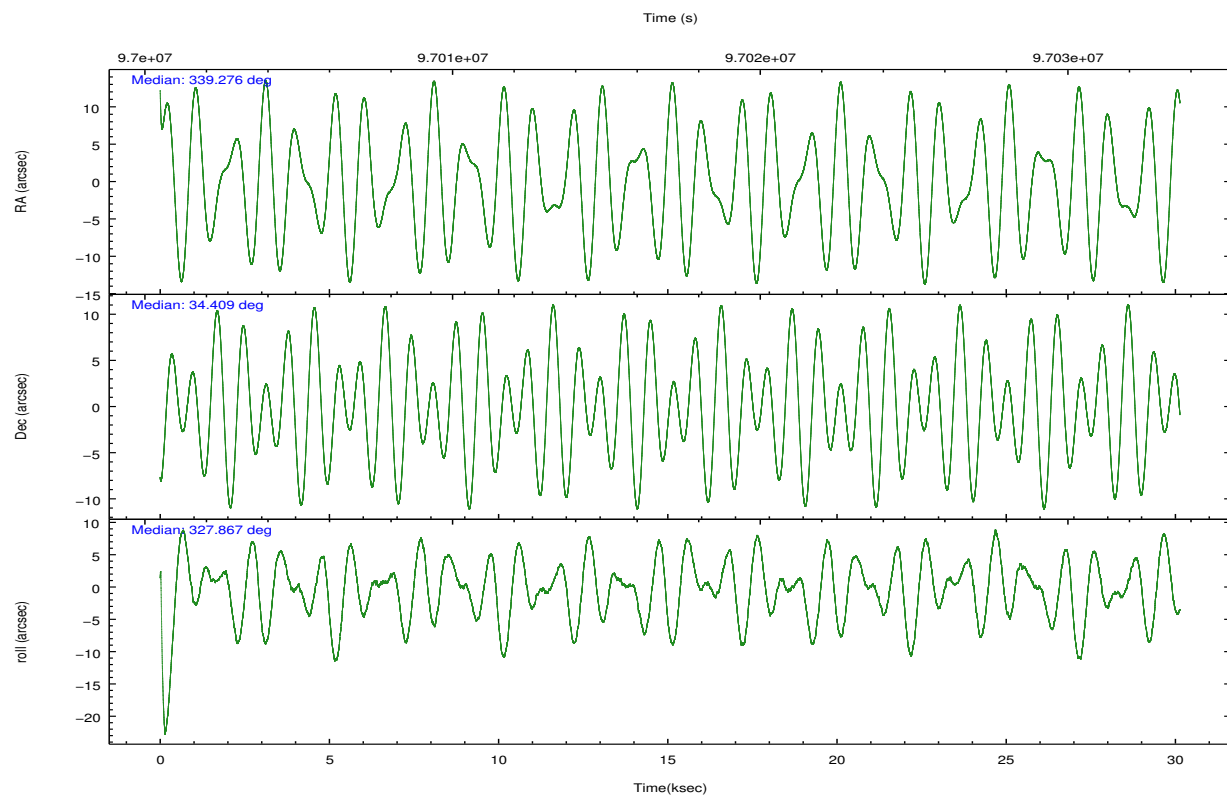
	ccd 0	ccd 1	ccd 2	ccd 3	ccd 6	ccd 7		ccd 0	ccd 1	ccd 2	ccd 3	ccd 6	ccd 7
level 1 events	95963	93081	99372	101170	104439	122749	grade 0 events	4776	5409	4876	4598	5125	6809
rejected events	84304	80540	88142	89912	92257	68364		4%	5%	4%	4%	4%	5%
rejected %	87%	86%	88%	88%	88%	55%	grade 1 events	47	30	33	29	30	120
								0%	0%	0%	0%	0%	0%
							grade 2 events	2484	2424	2192	2337	2471	11435
								2%	2%	2%	2%	2%	9%
							grade 3 events	1342	1361	1296	1257	1329	5651
								1%	1%	1%	1%	1%	4%
							grade 4 events	1178	1401	1273	1232	1318	5552
								1%	1%	1%	1%	1%	4%
							grade 5 events	3494	3471	3120	3539	3785	11057
								3%	3%	3%	3%	3%	9%
							grade 6 events	2151	2218	1831	2080	2228	26073
								2%	2%	1%	2%	2%	21%
							grade 7 events	80491	76767	84751	86098	88153	56052
								83%	82%	85%	85%	84%	45%

2.2 Compared Parameters

Parameter	Planned	Actual	Parameter	Planned	Actual
Instrument	ACIS	ACIS	Obspar format version number	7	7
Detector	ACIS-012367	ACIS-012367	Obspar file type	PREDICTED	ACTUAL
Grating	NONE	NONE	Obspar update status	NONE	UPDATED
Data mode	FAINT	FAINT	Number of optional ACIS chips dropped	0	0
Observation mode	POINTING	POINTING	On-chip summing requested	N	N
[deg] Pointing RA	339.242764	339.2758897853527	Subarray requested	CUSTOM	1/2
[deg] Pointing Dec	34.409695	34.4089230795112	Subarray start row	257	257
[deg] Pointing Roll	327.735650	327.8735712708079	Subarray row count	512	512
[mm] SIM focus pos	-0.684267	-0.6828225247311905	Alternating exposures requested	N	N
[mm] SIM defocus	0	0.001444936568705701	[s] Primary exposure time	0.000000	1.8
[mm] SIM translation stage pos	-190.132523	-190.1425803651734			
[mm] SIM translation stage offset	0	0.01005778216563158			
[s] Observation start time (MET)	97002132.184000	97000972.152336			
Observation start date	2001-01-27T17:01:08	2001-01-27T16:42:52			
[s] Observation end time (MET)	97032132.184000	97032805.57856099			
Observation end date	2001-01-28T01:21:08	2001-01-28T01:33:25			
Read mode	TIMED	TIMED			

2.3 Aspect



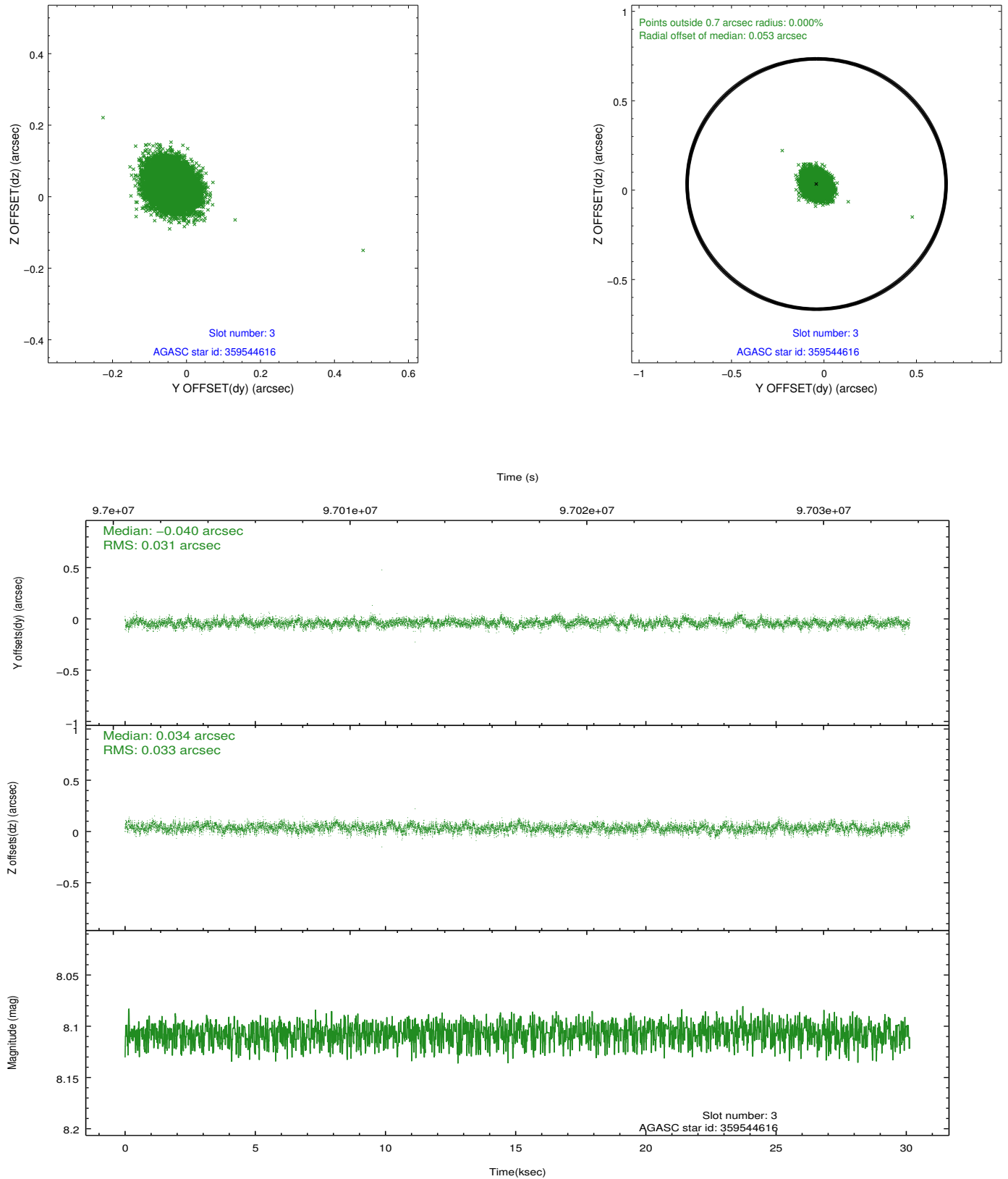


Slot Statistics

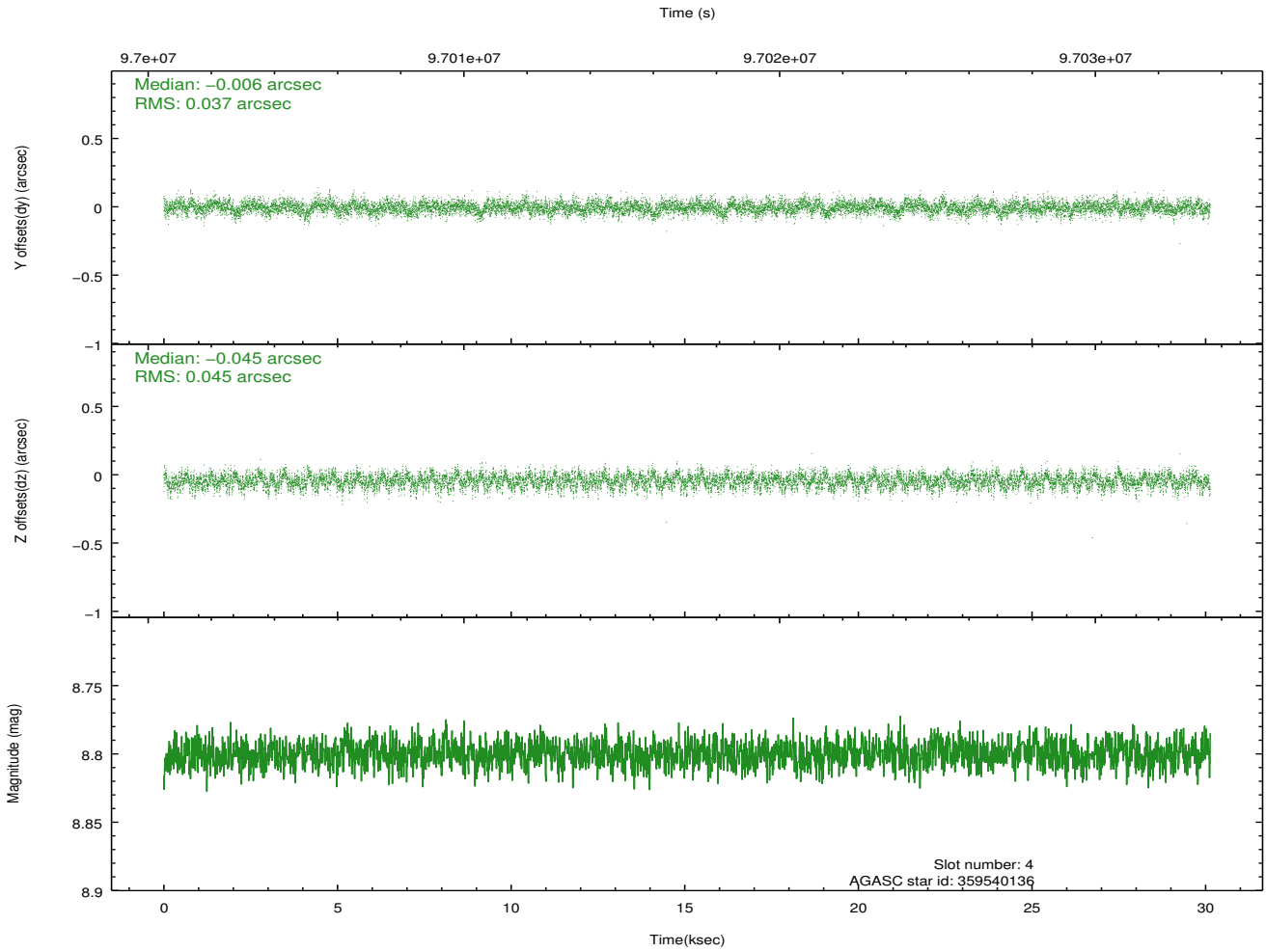
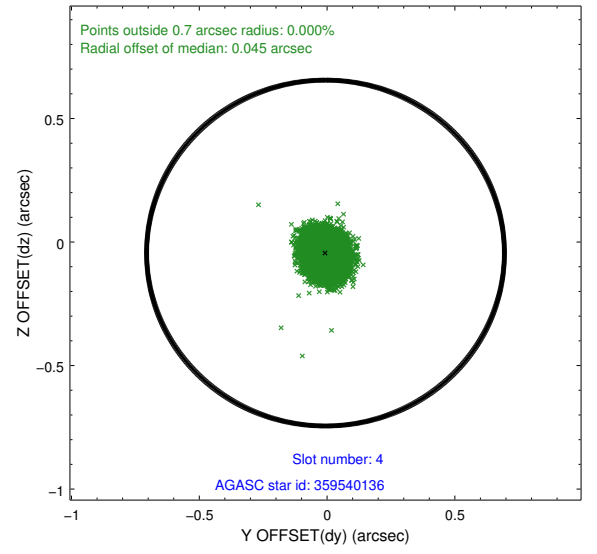
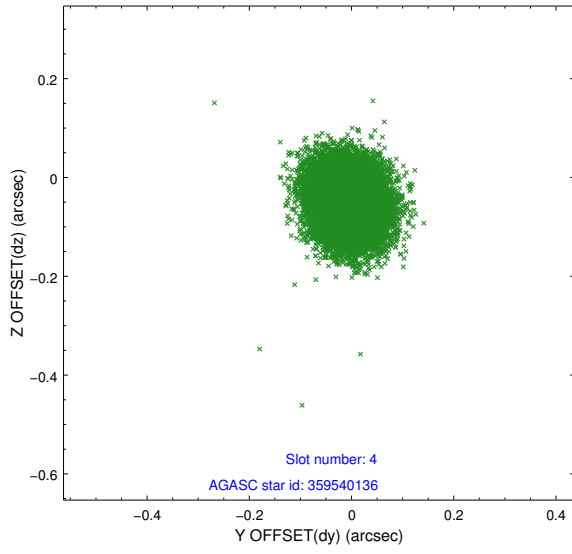
slot	status	id	mag	n_pts	med_dy	med_dz	dr1	dr2	ra	dec	mean_y	mean_z
0	FID	ACIS-S-2	7.12	7350	-0.005	0.008	0.013	0.024	0.000000	0.000000	-755.77	-1727.81
1	FID	ACIS-S-4	7.20	7350	-0.045	0.001	0.015	0.024	0.000000	0.000000	2157.43	180.60
2	FID	ACIS-S-5	7.24	7351	0.021	-0.000	0.009	0.015	0.000000	0.000000	-1808.50	174.33
3	GUIDE	359544616	8.11	14696	-0.040	0.034	0.048	0.078	339.312307	34.927880	-821.89	1686.77
4	GUIDE	359540136	8.80	14697	-0.006	-0.045	0.062	0.101	339.014971	34.618247	-971.28	274.96
5	GUIDE	359541464	8.67	14698	0.036	-0.059	0.059	0.095	339.073218	34.654496	-894.65	477.19
6	GUIDE	359532480	9.17	14694	-0.066	-0.059	0.094	0.143	338.355352	34.103802	-1654.33	-2334.00
7	GUIDE	359668200	9.45	14696	0.080	0.128	0.095	0.154	339.828324	34.777783	754.48	2048.93

2.4 Star Slots

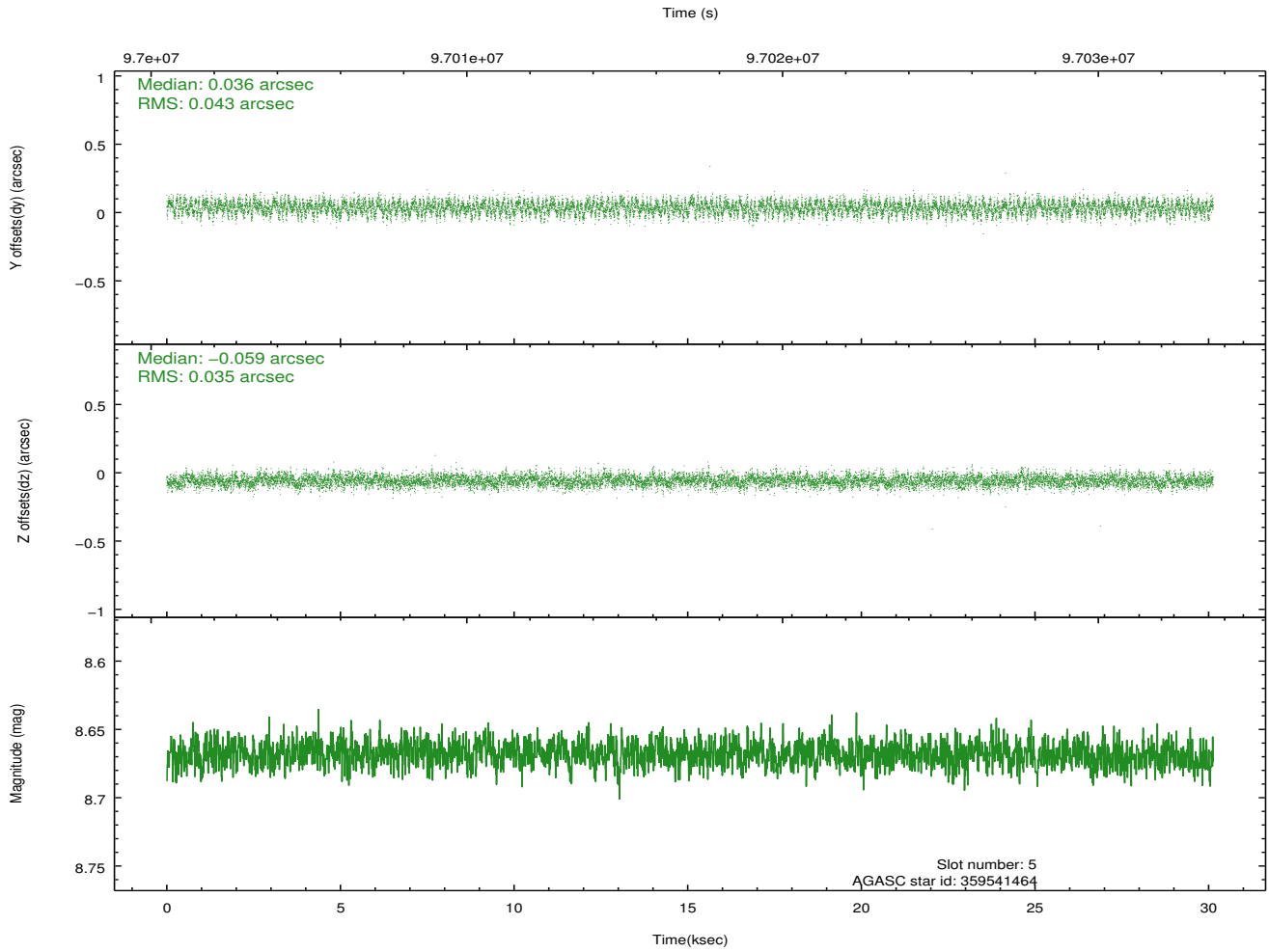
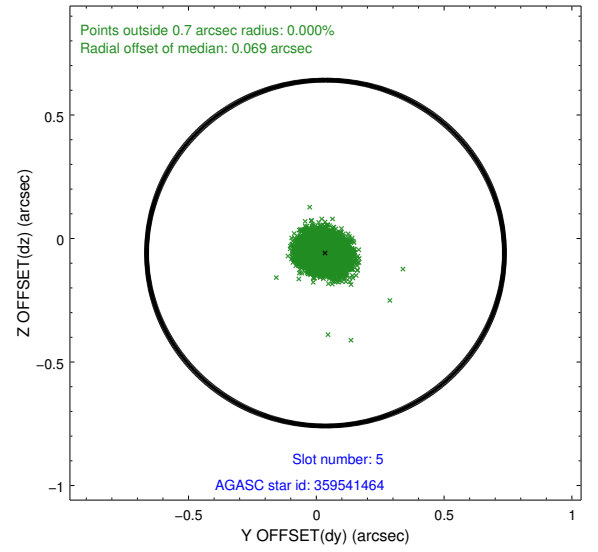
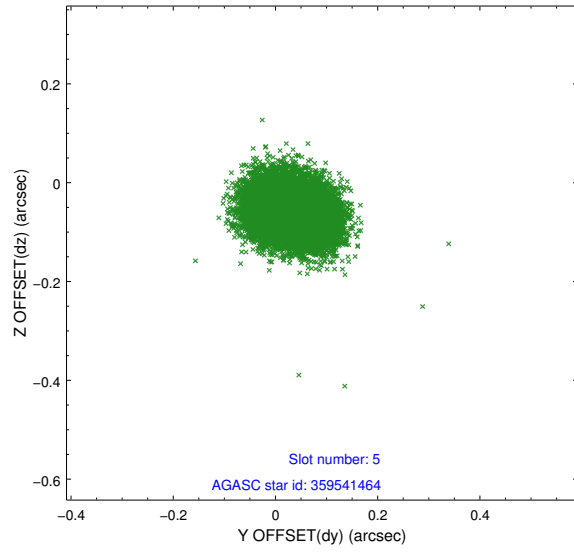
2.4.1 Slot 3



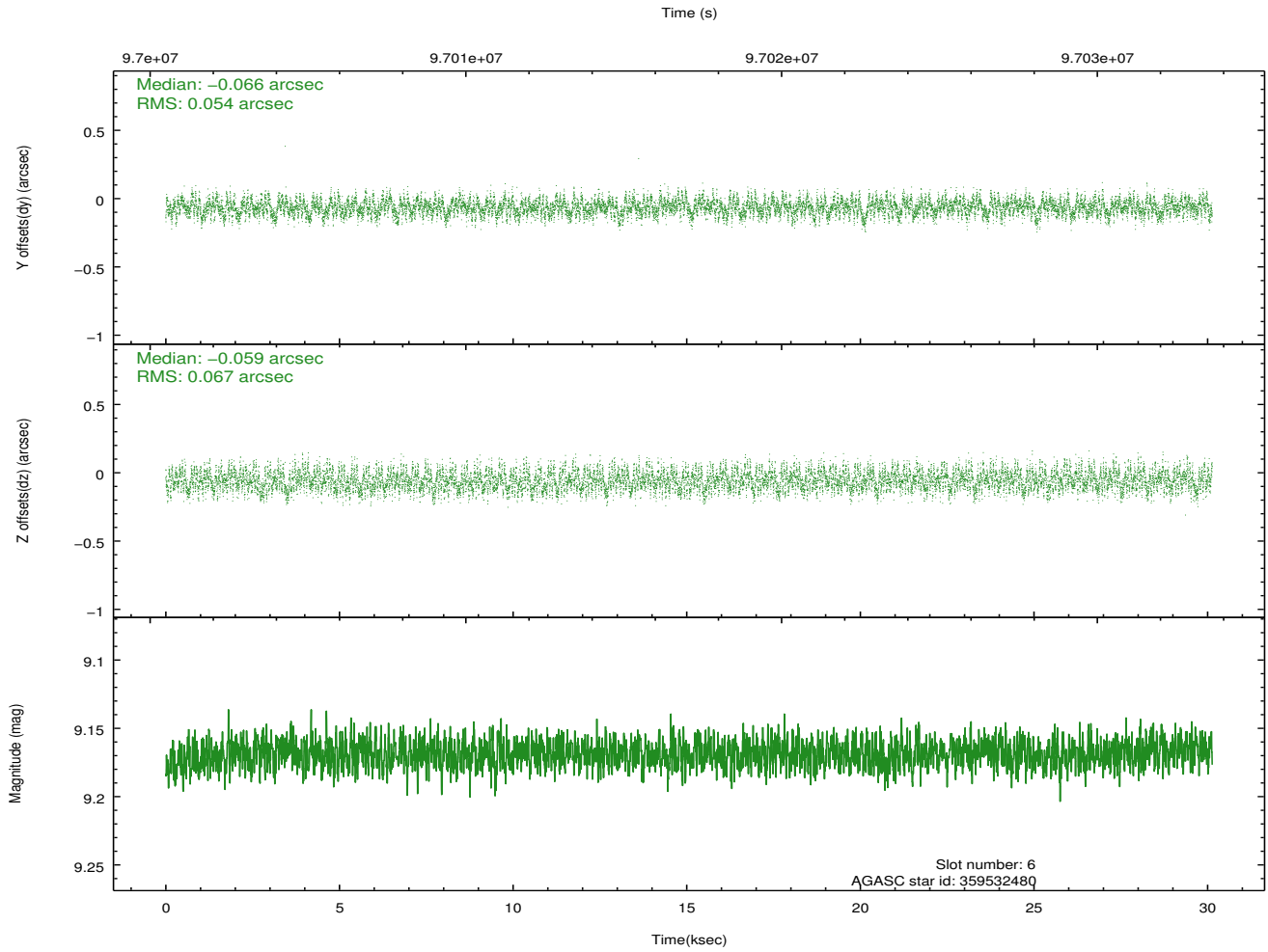
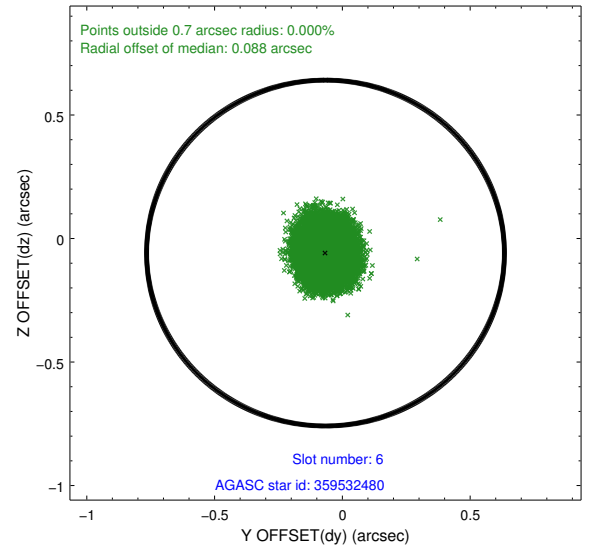
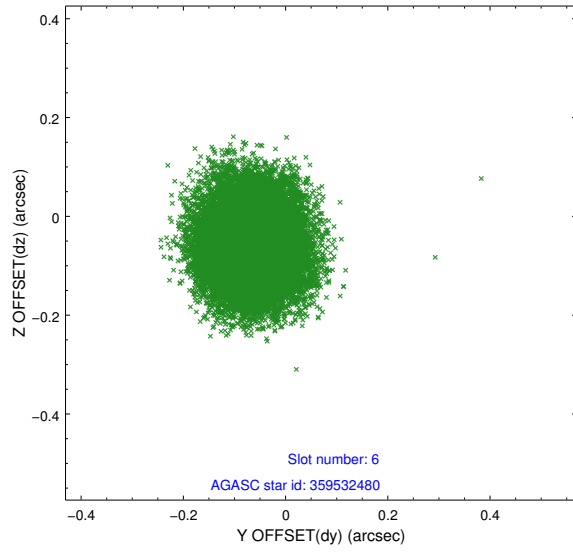
2.4.2 Slot 4



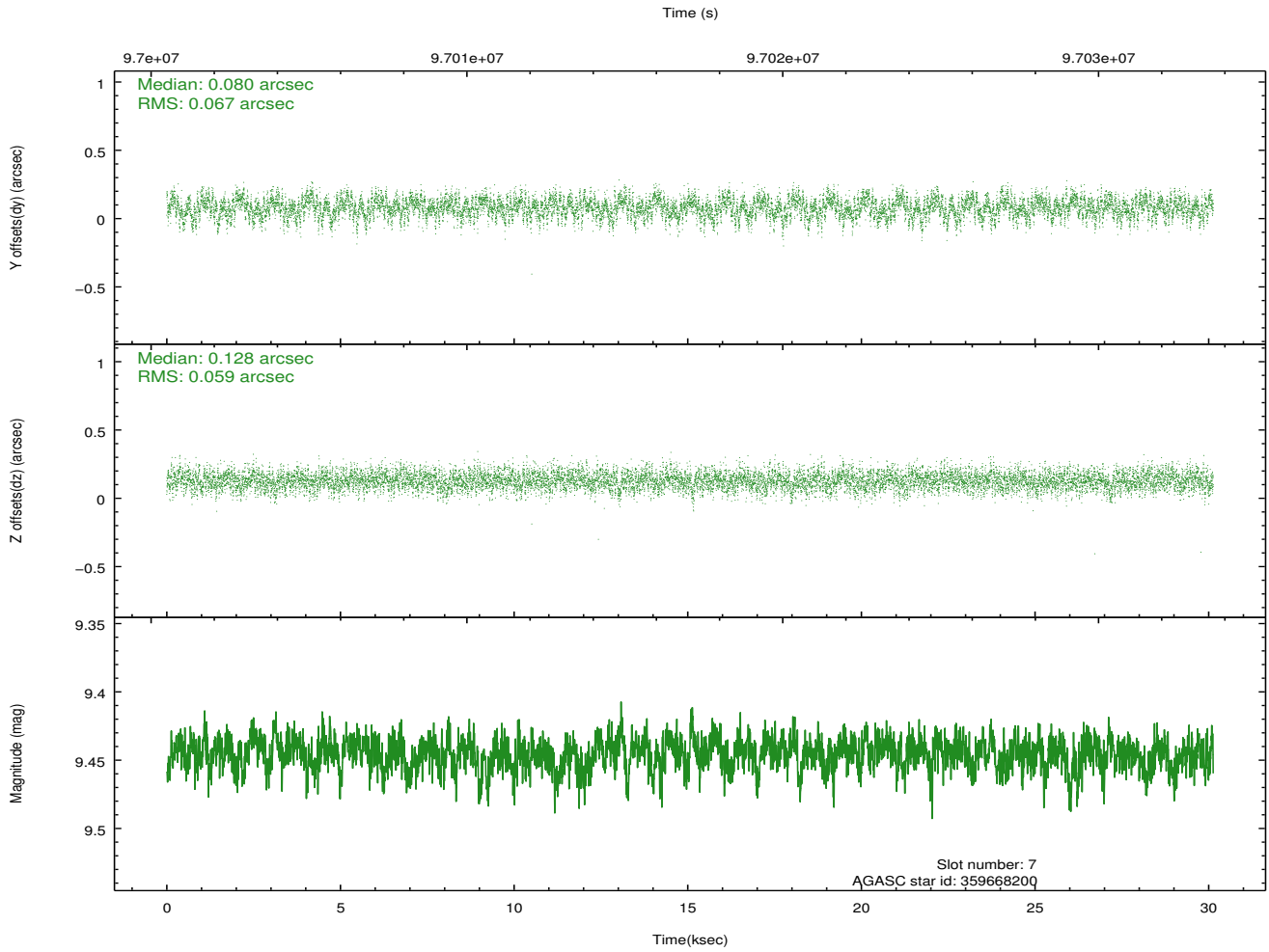
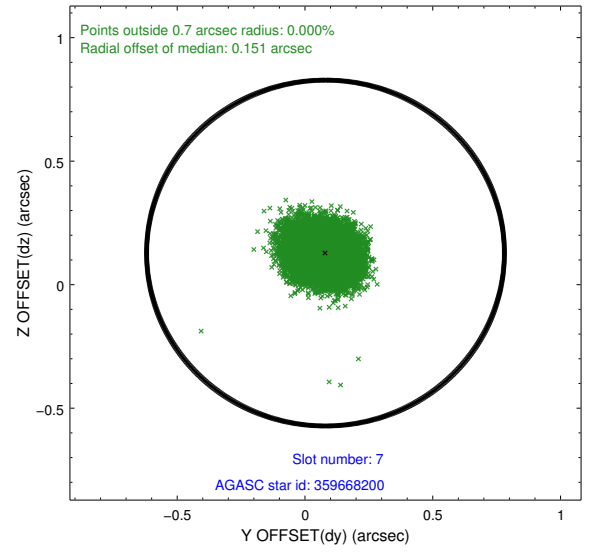
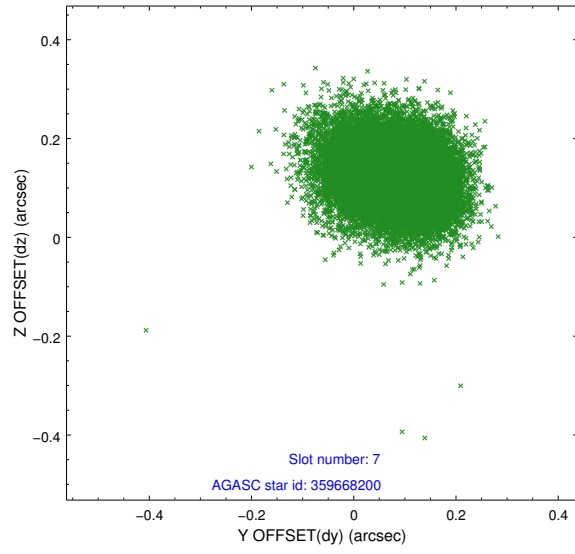
2.4.3 Slot 5



2.4.4 Slot 6

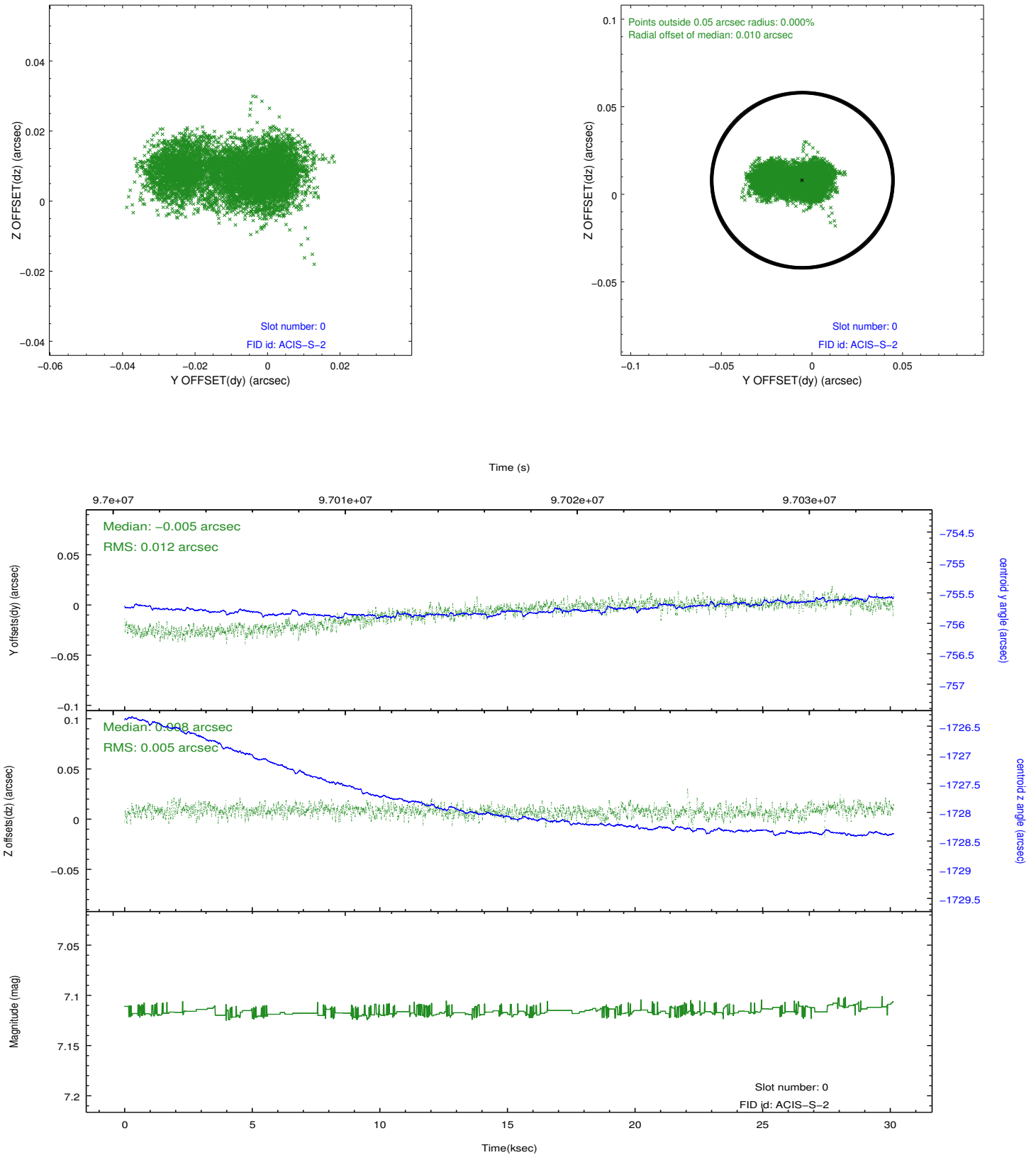


2.4.5 Slot 7

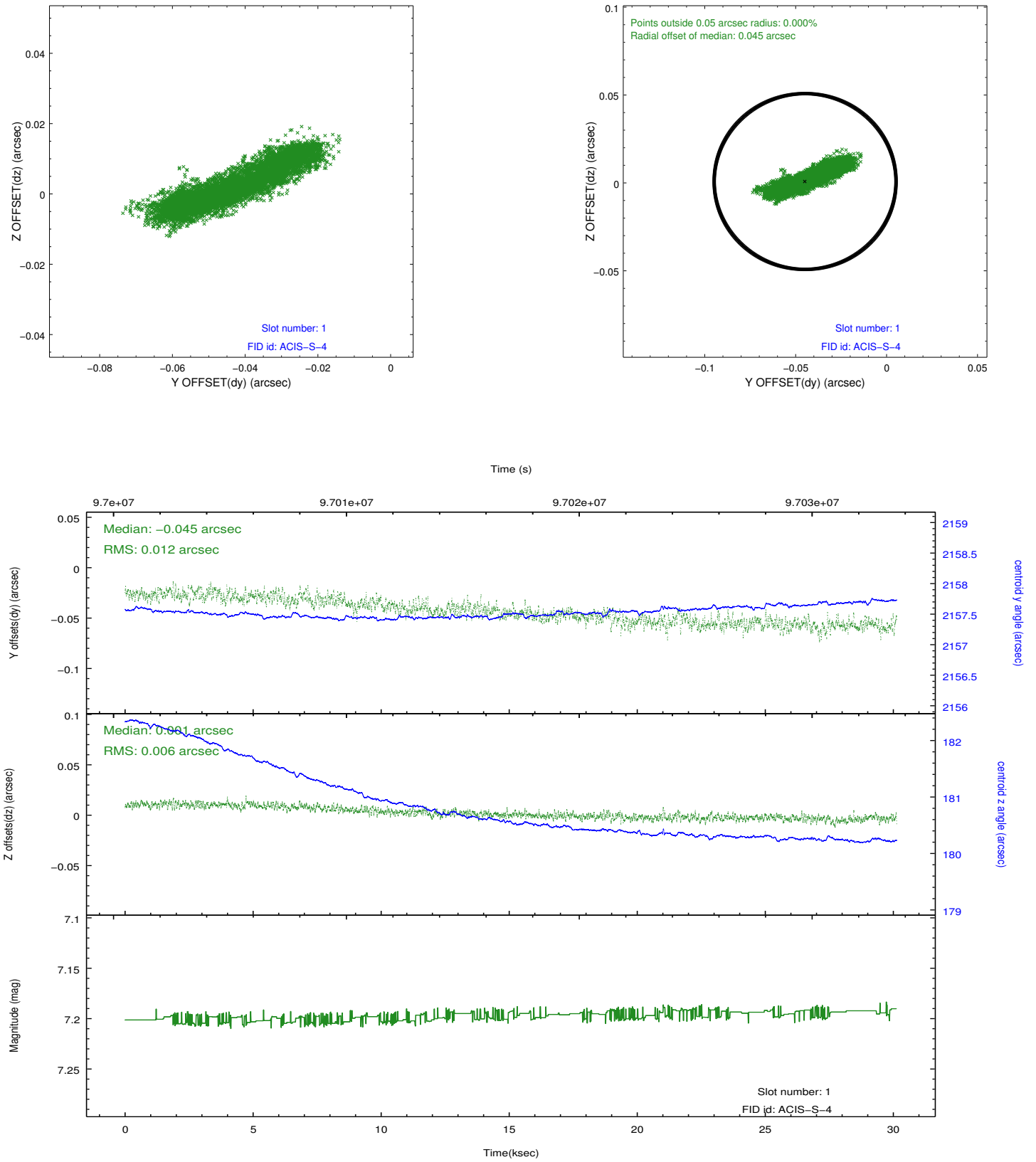


2.5 FID Slots

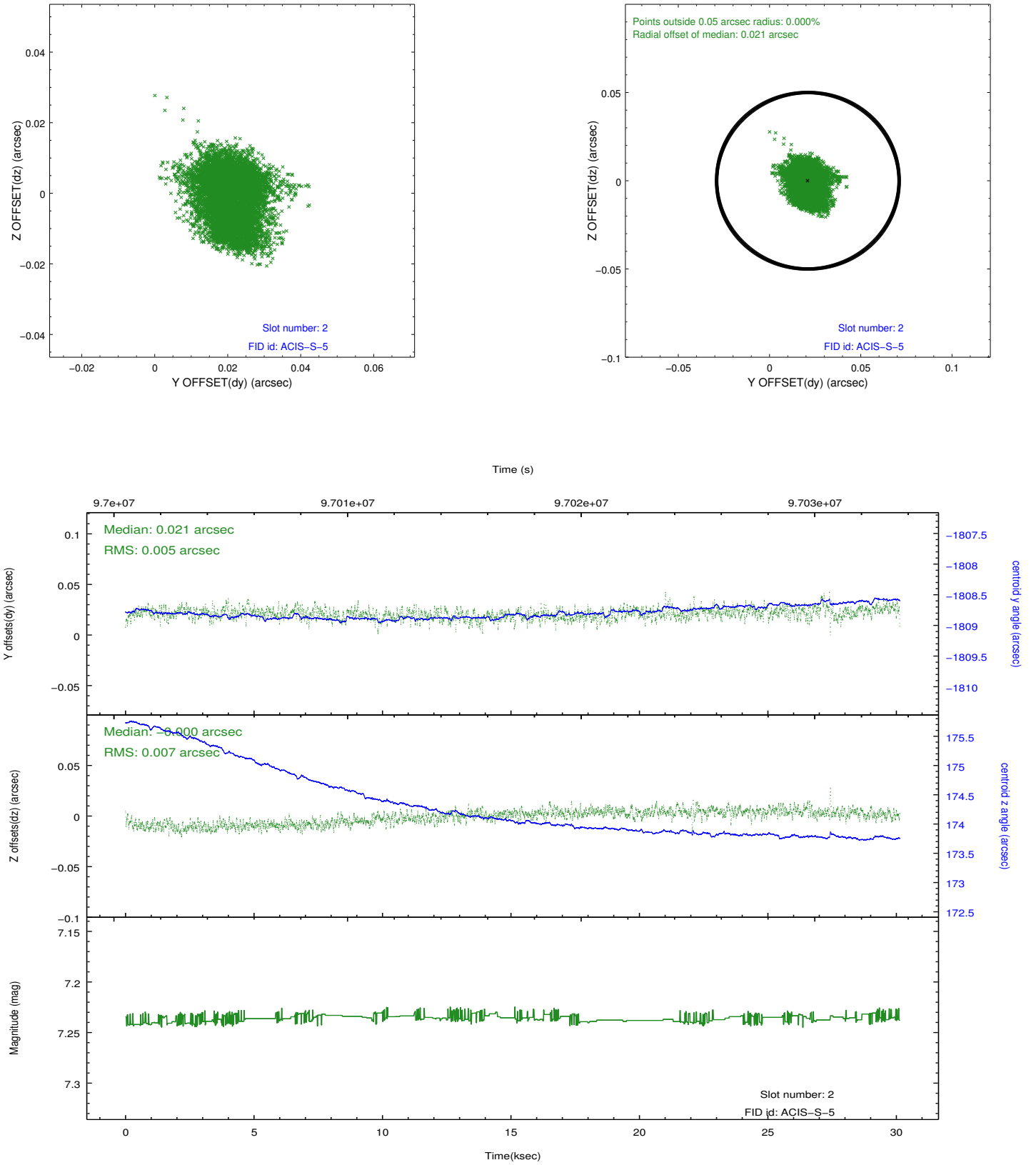
2.5.1 Slot 0



2.5.2 Slot 1



2.5.3 Slot 2



A Summary

A.1 Status

V&V Scientist	Jen Lauer
V&V Date (YYYY-MM-DD)	2012.09.17
V&V Edition	1
V&V Disposition and Status	OK
V&V Charge Time	30.132

A.2 Comments