

V&V Reference Report

L2 ASCDS Version : 7.6.8.1

Observation 2118 - L2 Version 001
Chandra X-Ray Center

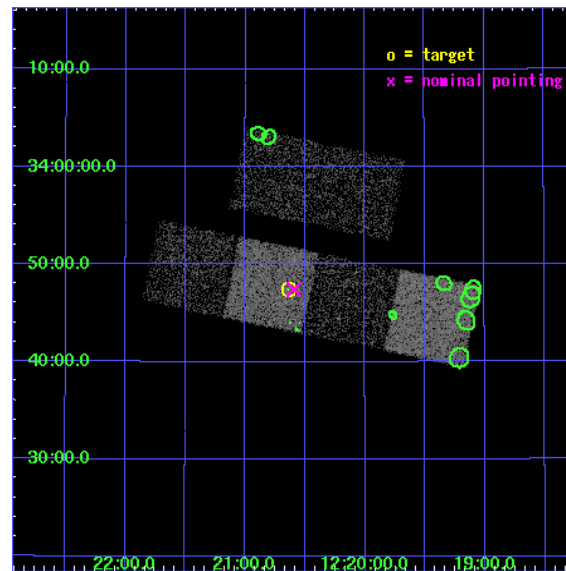
L2 Processing Date : Sep 9 2006

Contents

1	Front	2
2	OBI	3
2.1	OBI	3
2.1.1	Images	3
2.1.2	Bias	3
2.1.3	Parameters	4
2.1.4	Events	4
2.2	Compared Parameters	5
2.3	Aspect	6
2.4	Star Slots	9
2.4.1	Slot 3	9
2.4.2	Slot 4	10
2.4.3	Slot 5	11
2.4.4	Slot 6	12
2.4.5	Slot 7	13
2.5	FID Slots	14
2.5.1	Slot 0	14
2.5.2	Slot 1	15
2.5.3	Slot 2	16
3	Point Sources	17
A	Summary	18
A.1	Status	18
A.2	Comments	18

1 Front

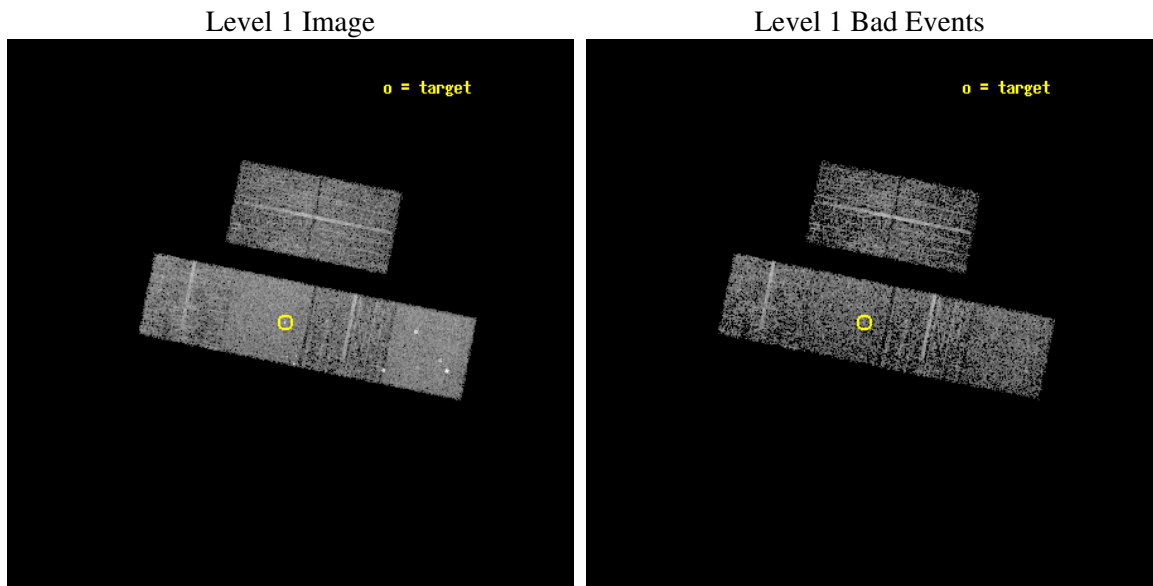
seq_num	700308
obs_id	2118
title	UNDERSTANDING THE NATURE OF ROSAT BFS
observer	DR. ILARIA CAGNONI
object	1WGA_J1220.6+3347
dtcycle	0
cycle	P
ra_targ	185.16
dec_targ	33.79075
ra_nom	185.14842629458
dec_nom	33.790438738423
roll_nom	191.36732839392
revision	3
ontime	3126.3999883533
livetime	3086.8116292087
ontime2	3126.3999883533
ontime3	3126.3999883533
ontime5	3126.3999883533
ontime6	3126.3999883533
ontime7	3126.3999883533
ontime8	3126.3999883533
l2events	31129



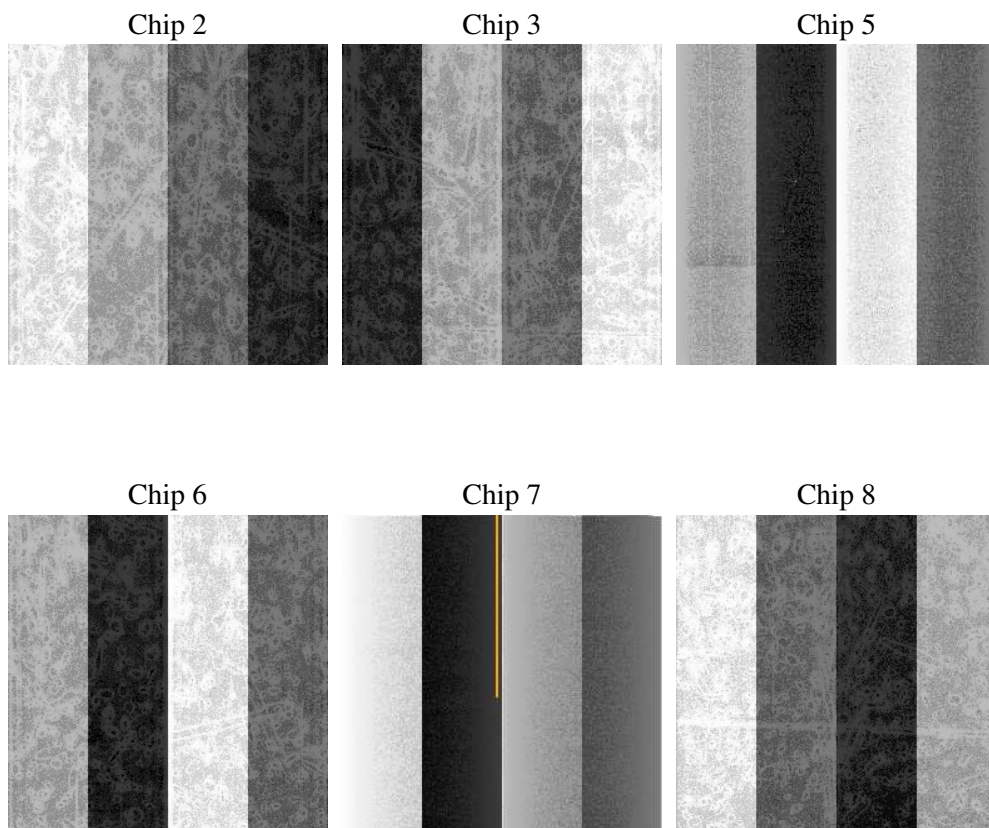
2 OBI

2.1 OBI

2.1.1 Images



2.1.2 Bias



2.1.3 Parameters

obi_num	4
ascdsver	7.6.8.1
caldsver	3.2.3
date	2006-09-09T13:05:14
revision	3

sched_exp_time	3000.000000
ontime	4949.0102210045
ontime2	4949.0102210045
ontime3	4949.0102210045
ontime5	4949.0102210045
ontime6	4949.0101911128
ontime7	4949.0102210045
ontime8	4949.0102210045
l1events	224988

2.1.4 Events

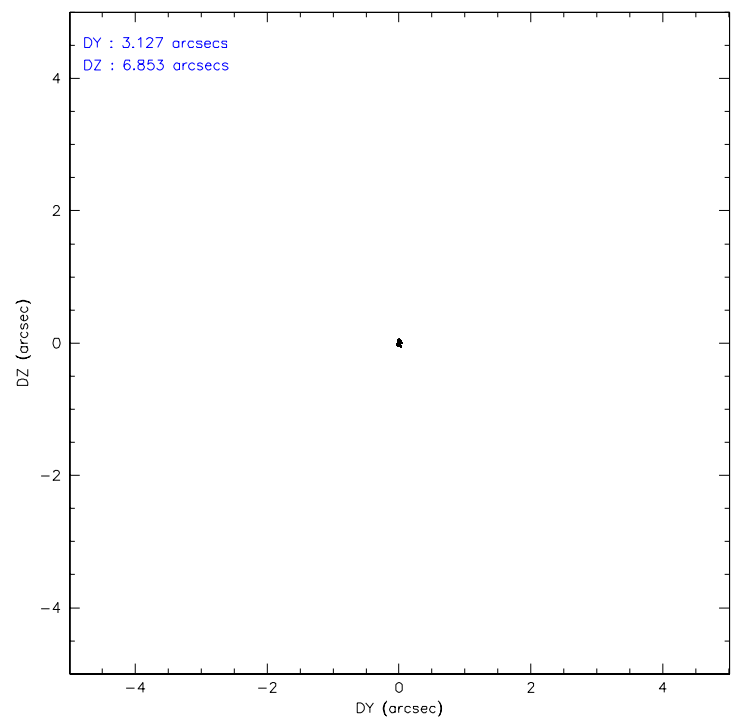
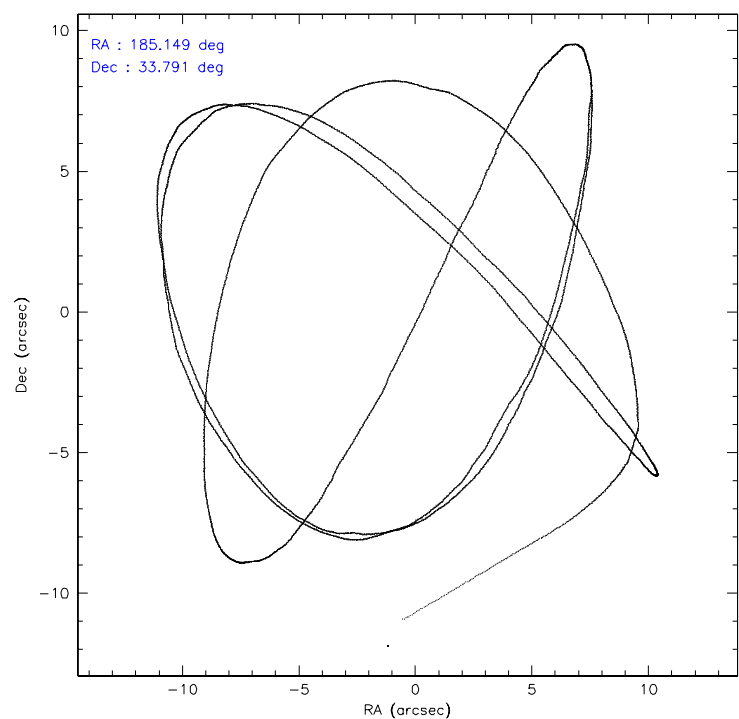
	ccd 2	ccd 3	ccd 5	ccd 6	ccd 7	ccd 8
level 1 events	32409	30310	47705	32531	42908	39125
rejected events	30047	27971	33683	30188	32021	34021
rejected %	92%	92%	70%	92%	74%	86%

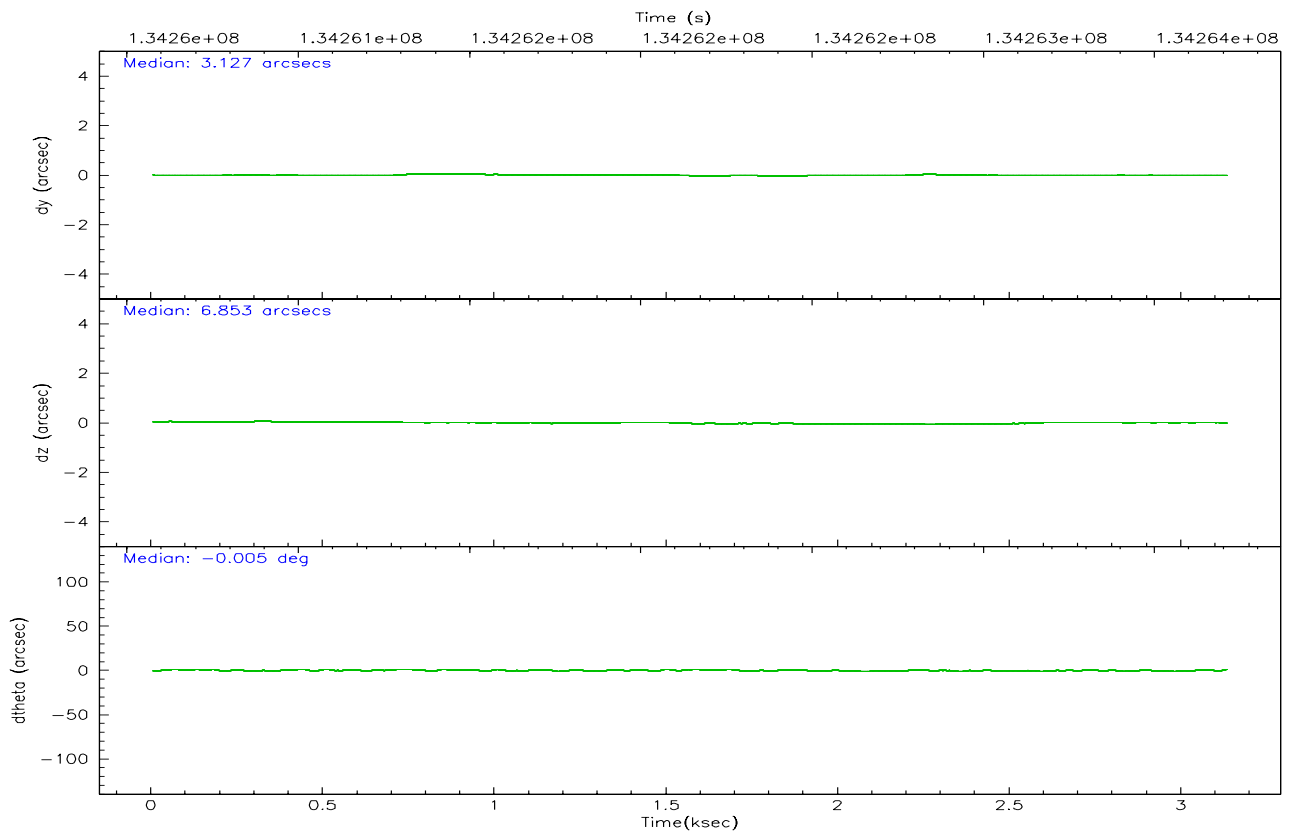
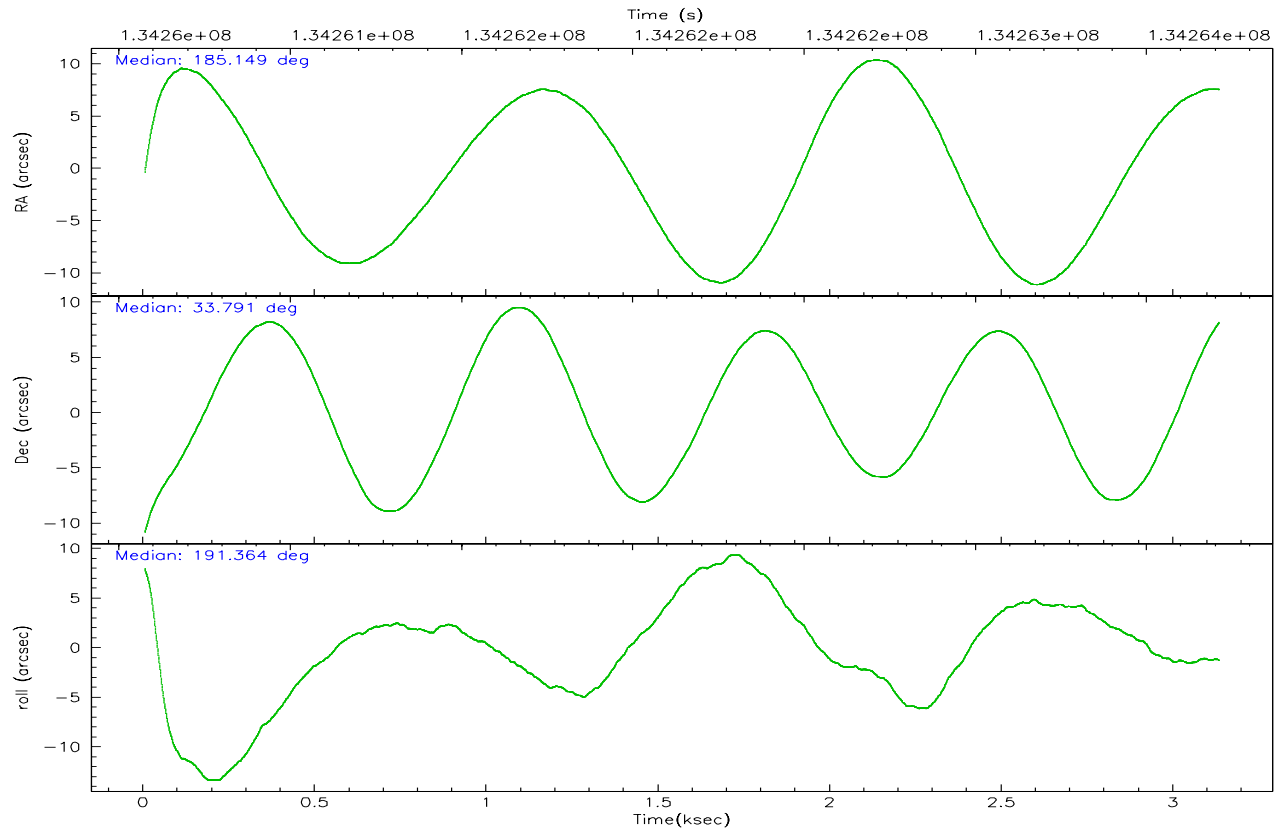
	ccd 2	ccd 3	ccd 5	ccd 6	ccd 7	ccd 8
grade 0 events	1579	1518	2819	1508	1173	2632
	4%	5%	5%	4%	2%	6%
grade 1 events	13	12	104	20	25	16
	0%	0%	0%	0%	0%	0%
grade 2 events	819	766	6845	747	4111	1763
	2%	2%	14%	2%	9%	4%
grade 3 events	347	368	468	384	927	961
	1%	1%	0%	1%	2%	2%
grade 4 events	365	351	455	332	931	887
	1%	1%	0%	1%	2%	2%
grade 5 events	1085	1229	2263	1343	2864	1730
	3%	4%	4%	4%	6%	4%
grade 6 events	661	722	11417	708	9576	2024
	2%	2%	23%	2%	22%	5%
grade 7 events	27540	25344	23334	27489	23301	29112
	84%	83%	48%	84%	54%	74%

2.2 Compared Parameters

Parameter	Planned	Actual	Parameter	Planned	Actual
Instrument	ACIS	ACIS	Obspar format version number	6	6
Detector	ACIS-235678	ACIS-235678	Obspar file type	PREDICTED	ACTUAL
Grating	NONE	NONE	Obspar update status	NONE	UPDATED
Data mode	FAINT	FAINT	On-chip summing requested	N	N
Observation mode	POINTING	POINTING	Subarray requested	NONE	NONE
Pointing RA	185.172660	185.1484262945797	Alternating exposures requested	N	N
Pointing Dec	33.808803	33.79043873842348	Primary exposure time	0.000000	3.2
Pointing Roll	191.197167	191.3673283939154			
SIM focus pos (mm)	-0.684267	-0.6828225247311905			
SIM defocus (mm)	0	0.001444936568705701			
SIM translation stage pos (mm)	-190.132523	-190.1400660498719			
SIM translation stage offset (mm)	0	0.00754346686406393			
Observation start time	134260711.184000	134258759.09849			
Observation start date	2002-04-03T22:37:27	2002-04-03T22:05:59			
Observation end time	134263711.184000	134264119.8487			
Observation end date	2002-04-03T23:27:27	2002-04-03T23:35:19			
Read mode	TIMED	TIMED			

2.3 Aspect



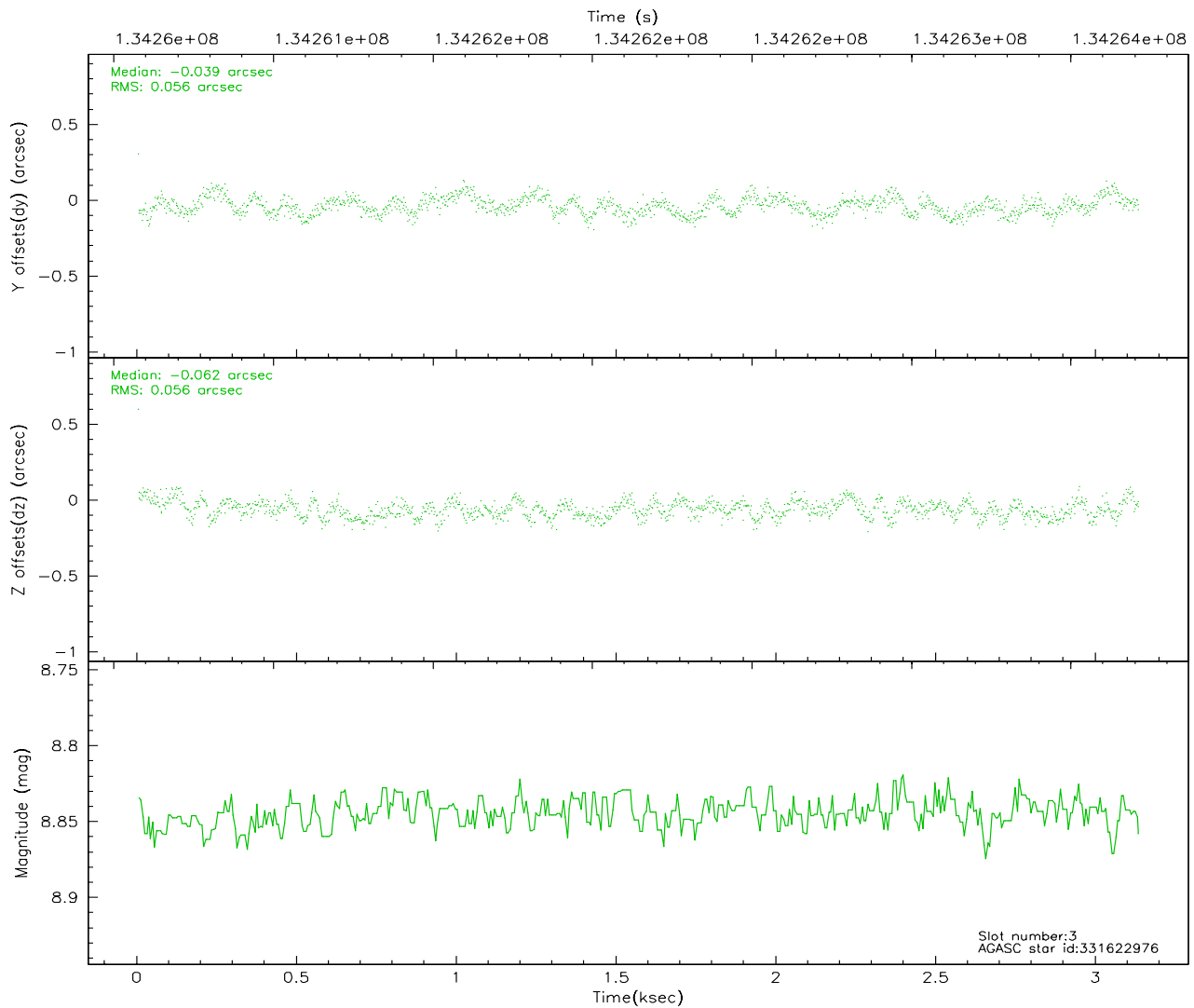
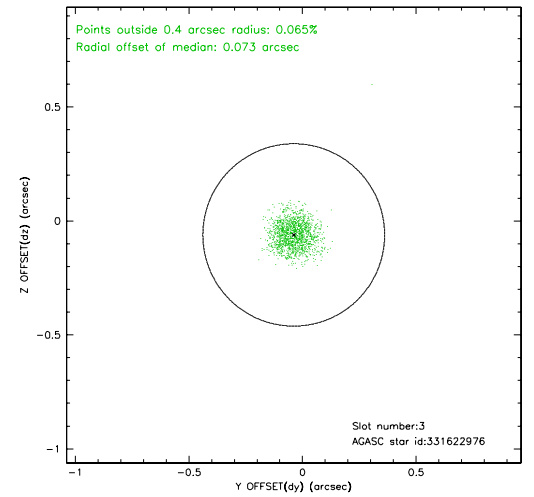
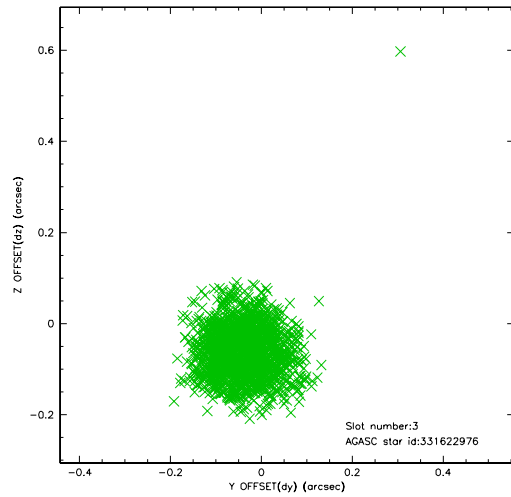


Slot Statistics

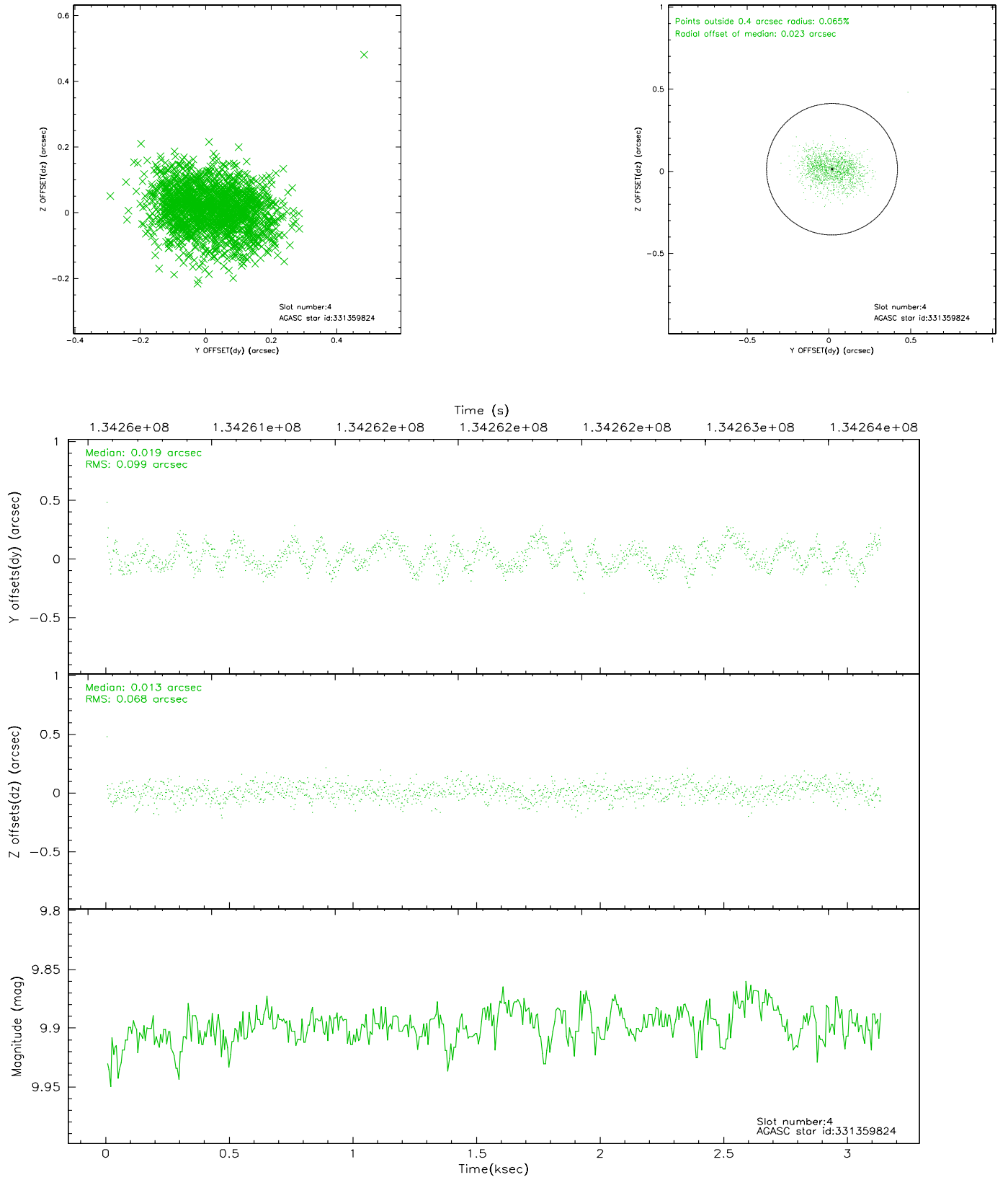
slot	status	id	mag	n_pts	med_dy	med_dz	dr1	dr2	ra	dec	mean_y	mean_z
0	FID	ACIS-S-2	7.11	764	-0.006	0.035	0.007	0.012	0.000000	0.000000	-755.76	-1727.99
1	FID	ACIS-S-4	7.20	764	-0.066	-0.006	0.005	0.010	0.000000	0.000000	2156.52	178.38
2	FID	ACIS-S-5	7.24	764	0.041	-0.020	0.006	0.012	0.000000	0.000000	-1805.96	174.32
3	GUIDE	331622976	8.84	1528	-0.039	-0.062	0.084	0.130	185.510535	34.255670	-1298.10	-1384.71
4	GUIDE	331359824	9.90	1527	0.019	0.013	0.129	0.201	185.748520	33.293976	-1341.34	2148.79
5	GUIDE	331495560	10.31	1527	0.016	0.045	0.145	0.240	184.463673	33.790131	2092.11	-351.73
6	GUIDE	331620888	9.91	1528	0.078	0.066	0.099	0.164	185.257034	34.001113	-379.30	-630.81
7	GUIDE	331617624	9.00	1526	-0.074	-0.060	0.091	0.142	185.131025	34.262865	-195.49	-1628.26

2.4 Star Slots

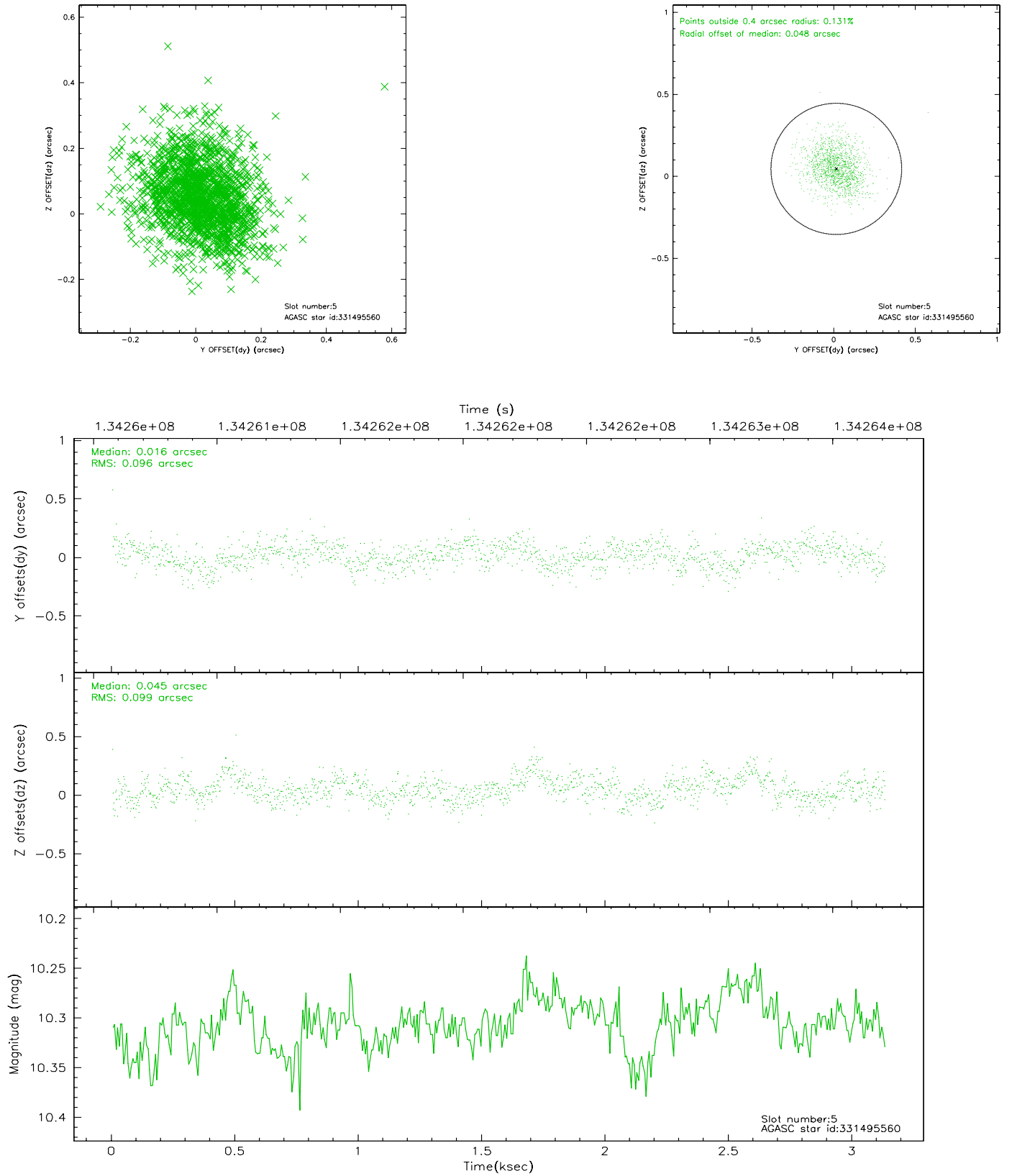
2.4.1 Slot 3



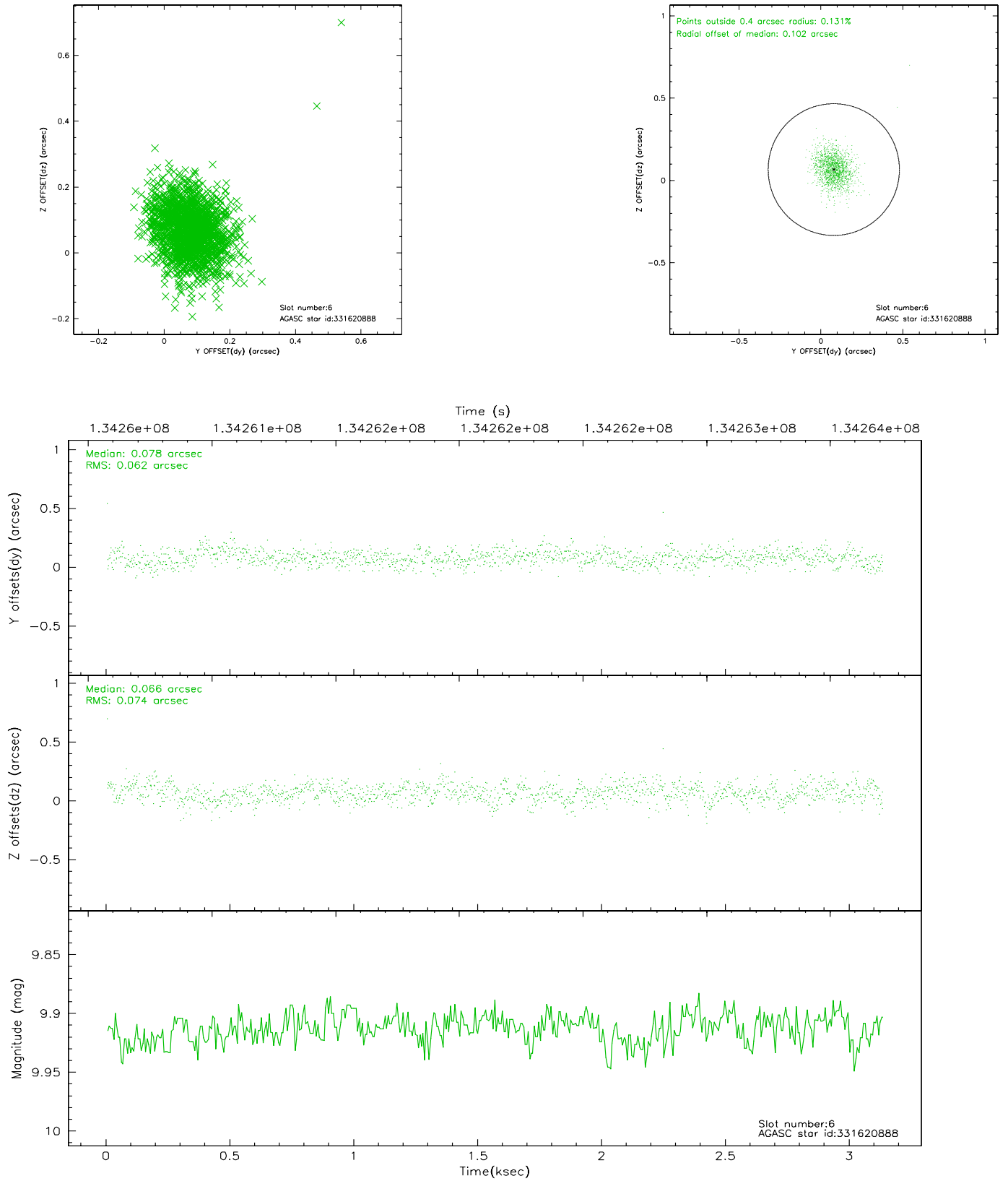
2.4.2 Slot 4



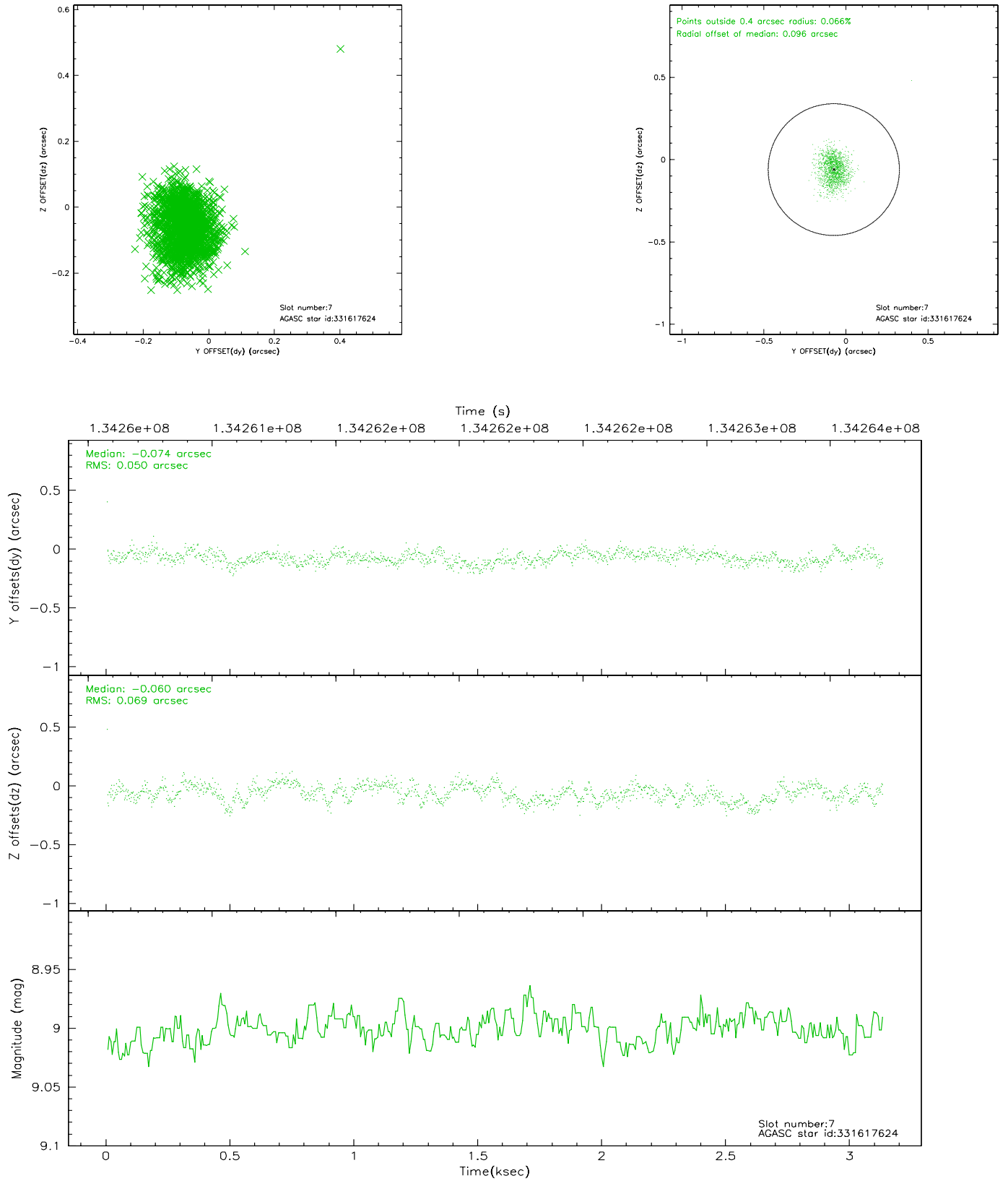
2.4.3 Slot 5



2.4.4 Slot 6

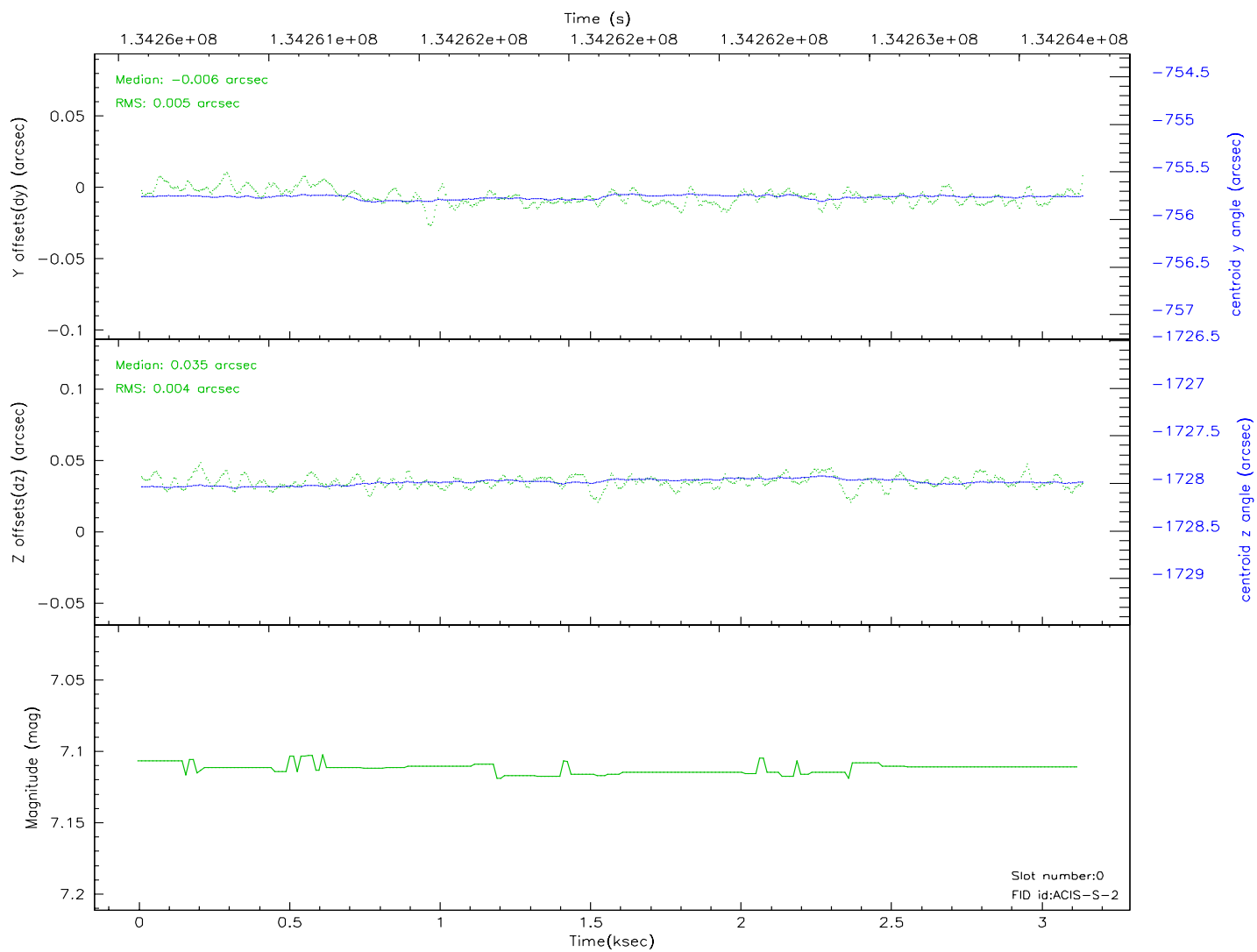
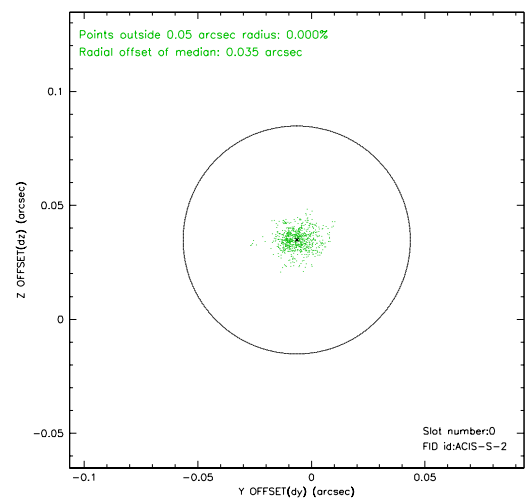
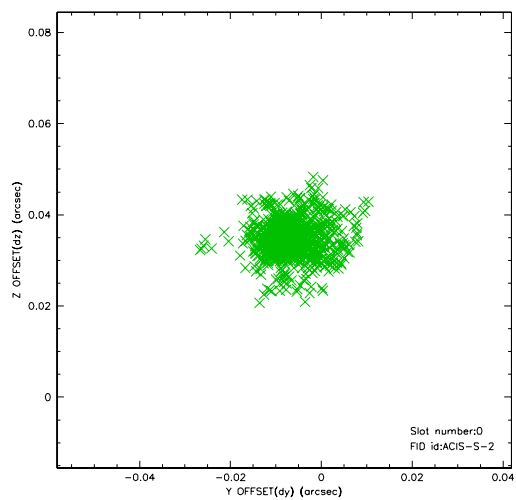


2.4.5 Slot 7

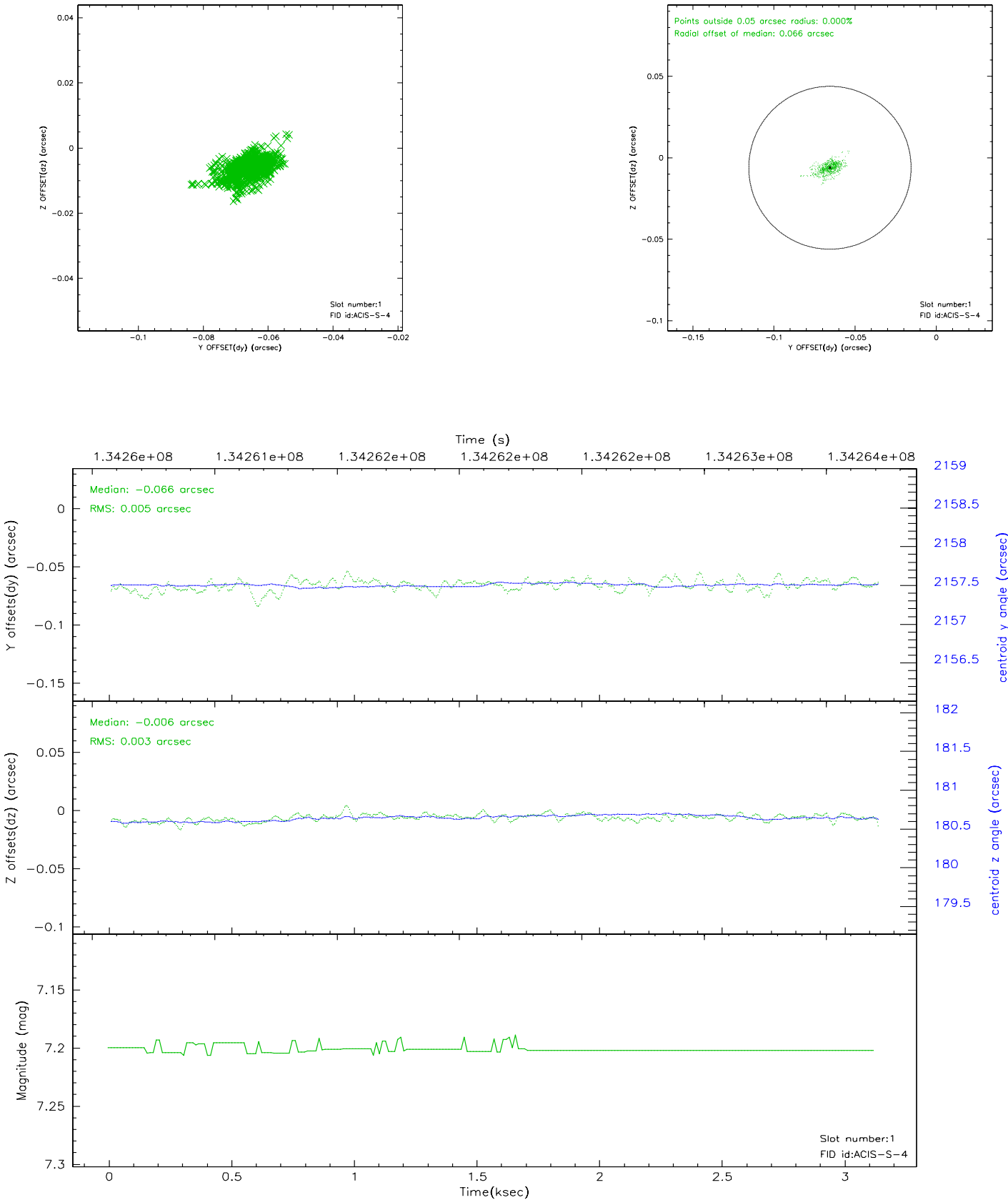


2.5 FID Slots

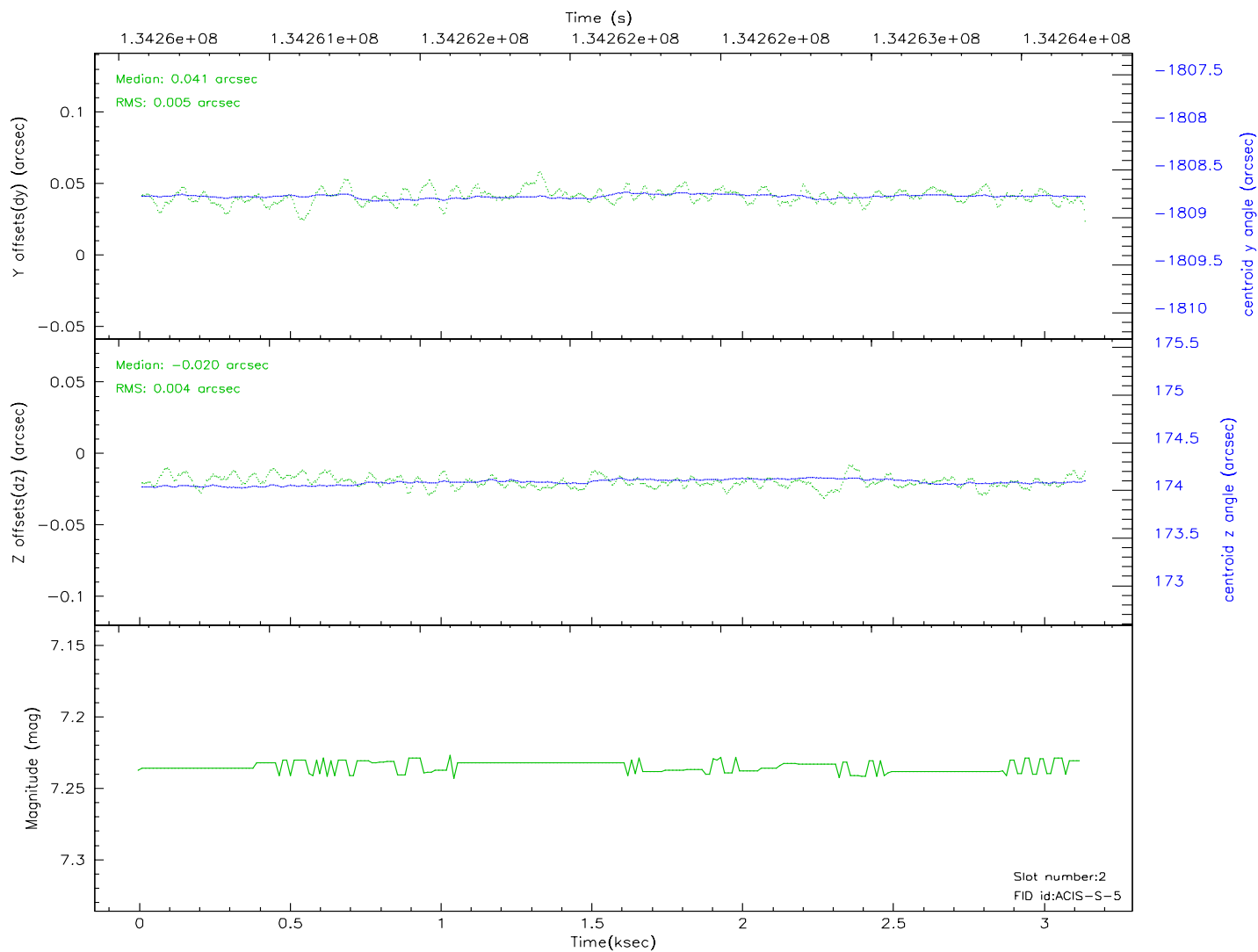
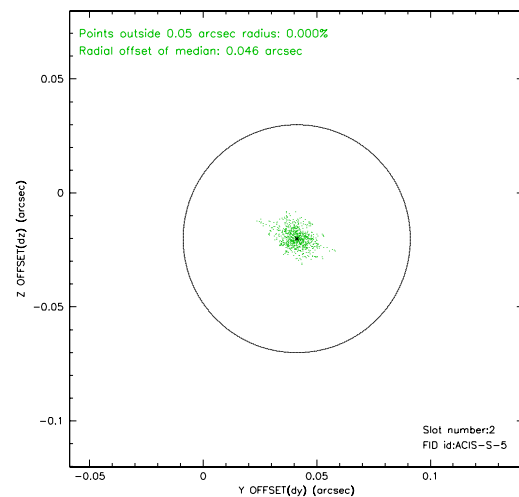
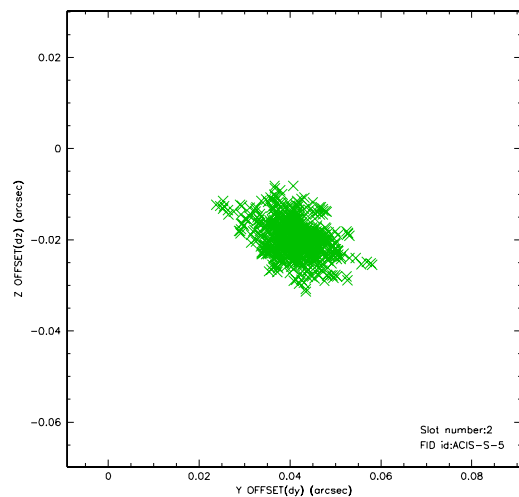
2.5.1 Slot 0



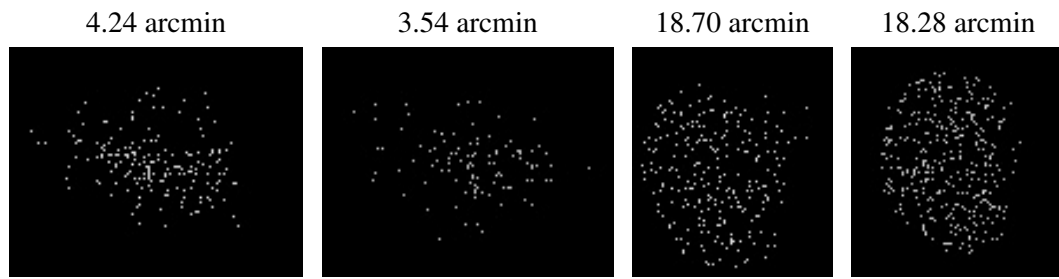
2.5.2 Slot 1



2.5.3 Slot 2



3 Point Sources



A Summary

A.1 Status

V&V Scientist	Jen Lauer
V&V Date (YYYY-MM-DD)	2006.09.10
V&V Edition	1
V&V Disposition and Status	OK
V&V Charge Time	3.126

A.2 Comments