

# V&V Reference Report

## L2 ASCDS Version : 7.6.9

Observation 2068 - L2 Version 001  
Chandra X-Ray Center

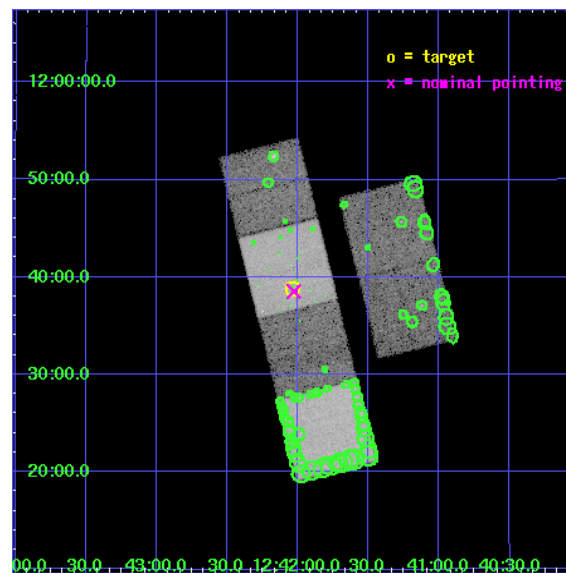
L2 Processing Date : Dec 15 2006

## Contents

<b>1</b>	<b>Front</b>	<b>2</b>
<b>2</b>	<b>OBI</b>	<b>3</b>
2.1	OBI . . . . .	3
2.1.1	Images . . . . .	3
2.1.2	Bias . . . . .	3
2.1.3	Parameters . . . . .	4
2.1.4	Events . . . . .	4
2.2	Compared Parameters . . . . .	5
2.3	Aspect . . . . .	6
2.4	Star Slots . . . . .	9
2.4.1	Slot 3 . . . . .	9
2.4.2	Slot 4 . . . . .	10
2.4.3	Slot 5 . . . . .	11
2.4.4	Slot 6 . . . . .	12
2.4.5	Slot 7 . . . . .	13
2.5	FID Slots . . . . .	14
2.5.1	Slot 0 . . . . .	14
2.5.2	Slot 1 . . . . .	15
2.5.3	Slot 2 . . . . .	16
<b>3</b>	<b>Point Sources</b>	<b>17</b>
<b>A</b>	<b>Summary</b>	<b>18</b>
A.1	Status . . . . .	18
A.2	Comments . . . . .	18

# 1 Front

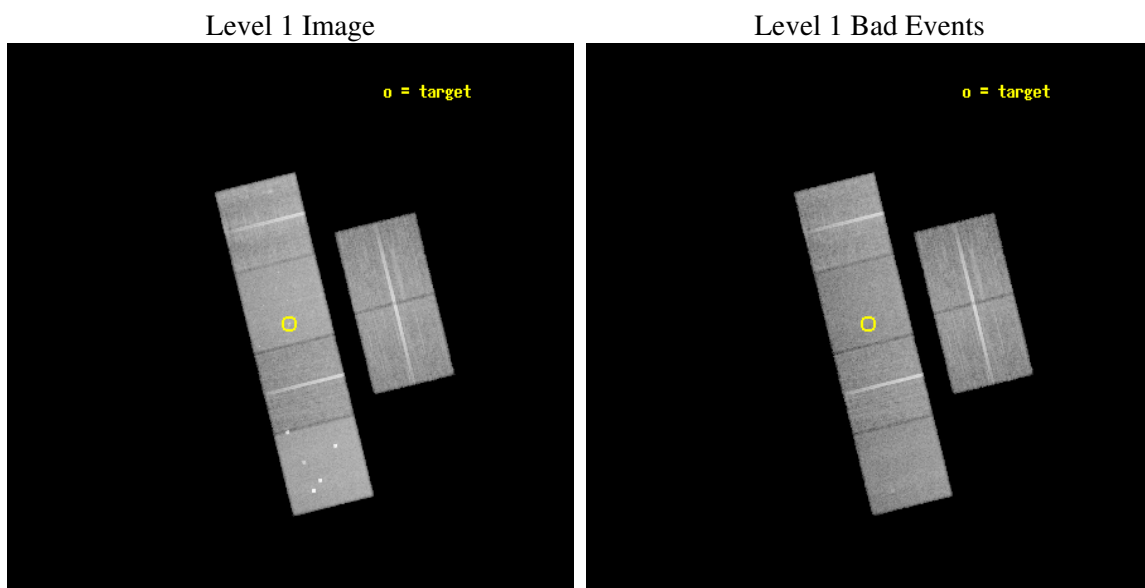
seq_num	600202
obs_id	2068
title	CHANDRA OBSERVATIONS OF A DIFFERENT CLASS OF ELLIPTICAL GALAXIES
observer	Dr. Ann Zabludoff
object	NGC 4621
dtcycle	0
cycle	P
ra_targ	190.51
dec_targ	11.645861
ra_nom	190.50729383025
dec_nom	11.642281584196
roll_nom	256.11752504779
revision	2
ontime	25155.118053094
livetime	24836.588801712
ontime2	25155.118083015
ontime3	25155.118083015
ontime5	25155.118083015
ontime6	25151.877132773
ontime7	25155.118053094
ontime8	25151.877132773
l2events	257221



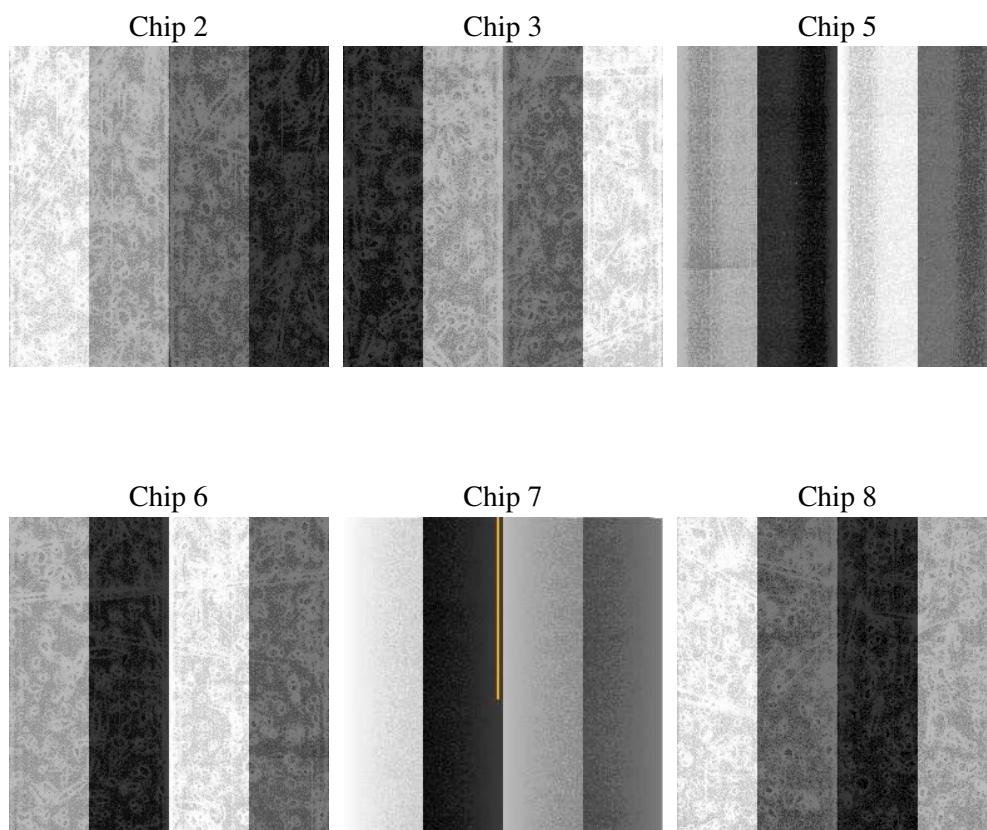
## 2 OBI

### 2.1 OBI

#### 2.1.1 Images



#### 2.1.2 Bias



### 2.1.3 Parameters

obi_num	0
ascdsver	7.6.9
caldsver	3.2.4
date	2006-12-16T00:18:49
revision	2

sched_exp_time	25000.000000
ontime	25432.110740185
ontime2	25432.110740185
ontime3	25432.110740185
ontime5	25432.110770106
ontime6	25428.869789943
ontime7	25432.110740185
ontime8	25428.869789943
l1events	1213059

### 2.1.4 Events

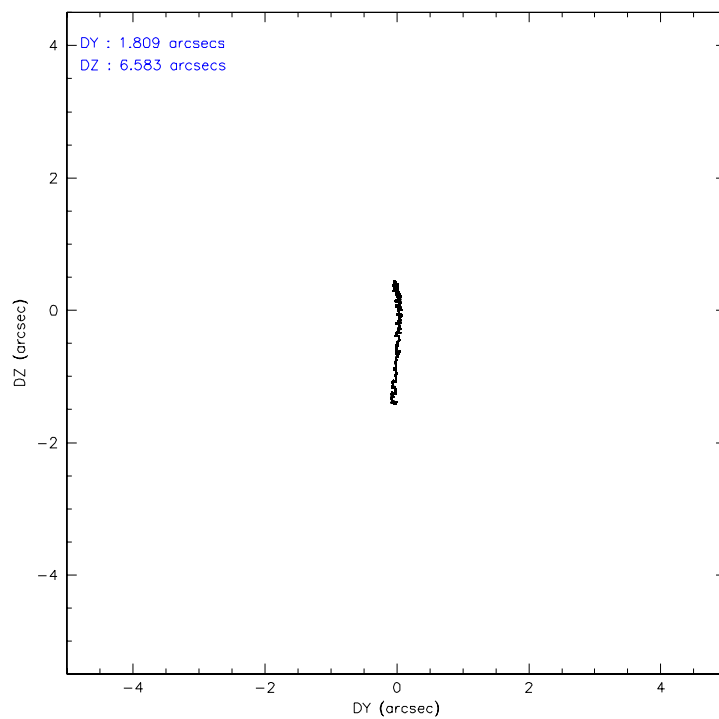
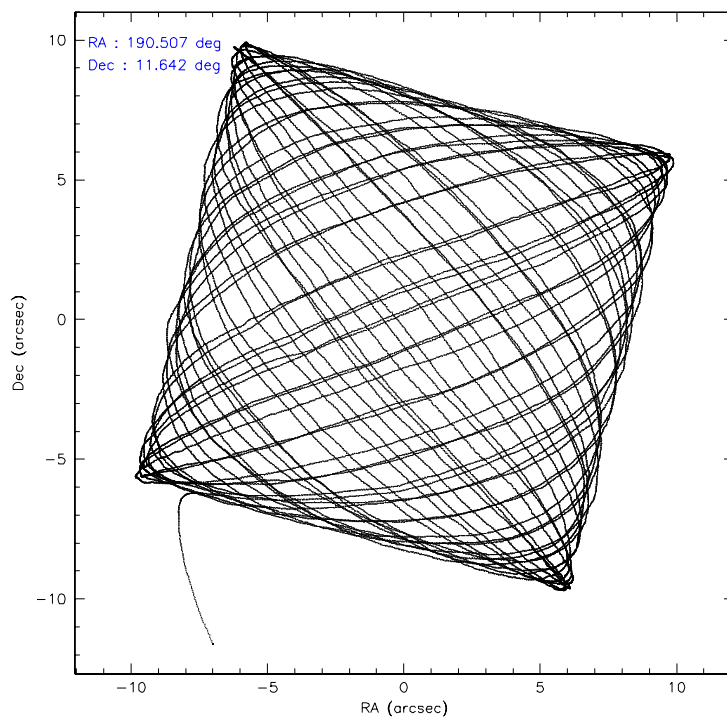
	ccd 2	ccd 3	ccd 5	ccd 6	ccd 7	ccd 8
level 1 events	177831	168340	247972	173843	222774	222299
rejected events	157867	148226	135731	152845	136088	173430
rejected %	88%	88%	54%	87%	61%	78%

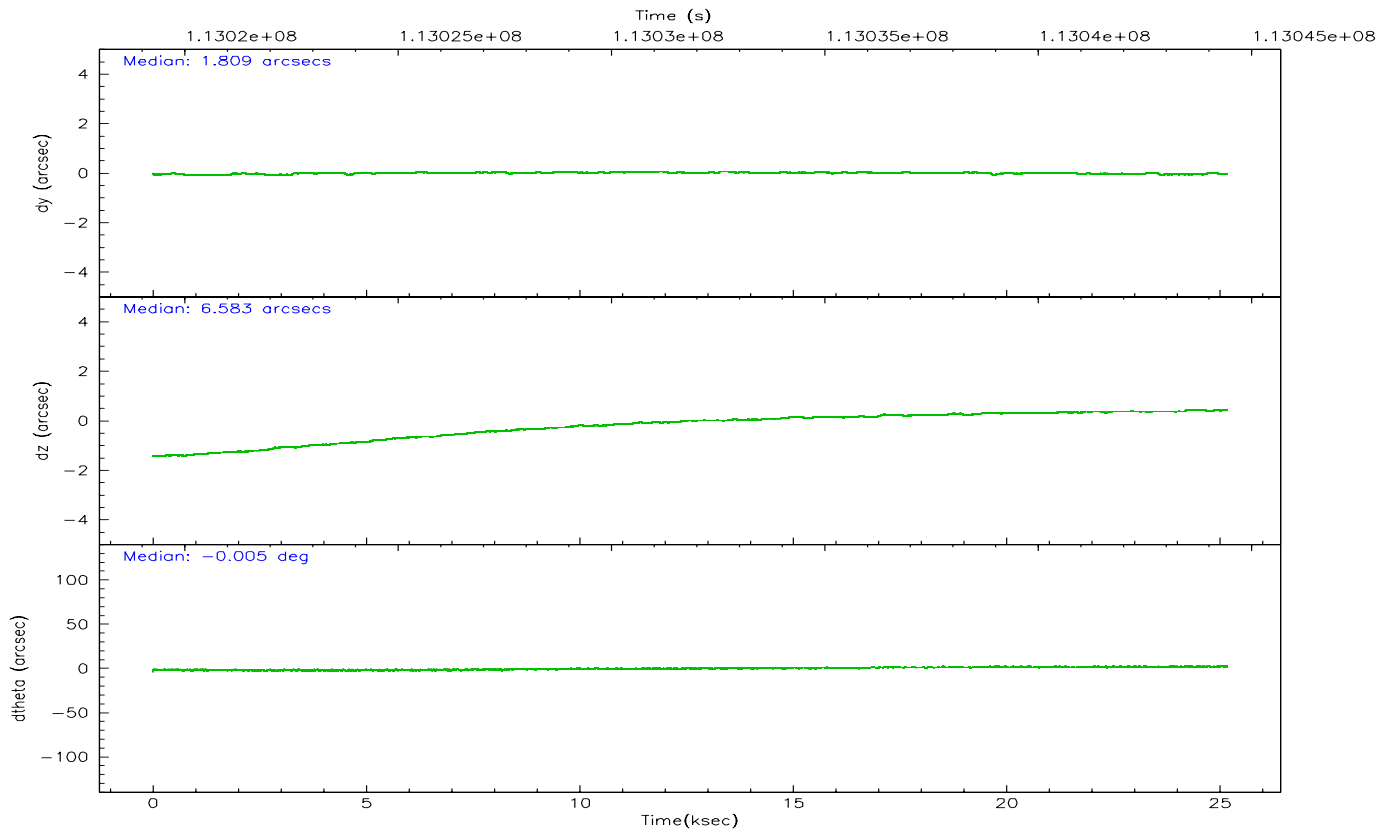
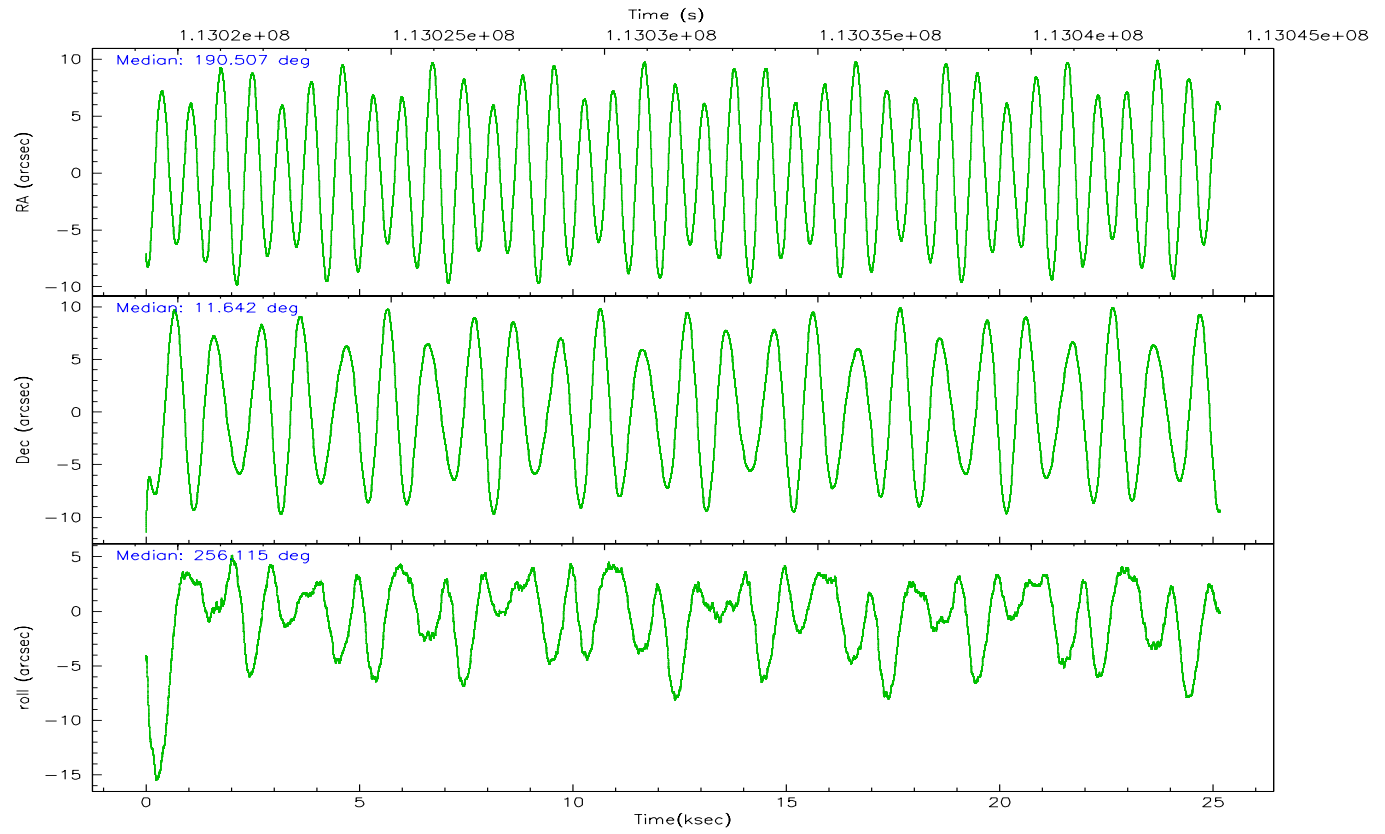
	ccd 2	ccd 3	ccd 5	ccd 6	ccd 7	ccd 8
grade 0 events	8763	8790	16175	8810	6510	16761
	4%	5%	6%	5%	2%	7%
grade 1 events	101	76	402	79	143	127
	0%	0%	0%	0%	0%	0%
grade 2 events	4321	4261	32305	4436	21704	9957
	2%	2%	13%	2%	9%	4%
grade 3 events	1738	1833	2616	1970	4848	5604
	0%	1%	1%	1%	2%	2%
grade 4 events	1830	1890	2482	1982	4694	5215
	1%	1%	1%	1%	2%	2%
grade 5 events	5995	6475	11723	7061	14714	9162
	3%	3%	4%	4%	6%	4%
grade 6 events	3521	3567	59991	4031	49846	11943
	1%	2%	24%	2%	22%	5%
grade 7 events	151562	141448	122278	145474	120315	163530
	85%	84%	49%	83%	54%	73%

## 2.2 Compared Parameters

Parameter	Planned	Actual	Parameter	Planned	Actual
Instrument	ACIS	ACIS	Obspar format version number	6	6
Detector	ACIS-235678	ACIS-235678	Obspar file type	PREDICTED	ACTUAL
Grating	NONE	NONE	Obspar update status	NONE	UPDATED
Data mode	FAINT	FAINT	Number of optional ACIS chips dropped	0	0
Observation mode	POINTING	POINTING	On-chip summing requested	N	N
Pointing RA	190.499273	190.507293830249	Subarray requested	NONE	NONE
Pointing Dec	11.668415	11.64228158419631	Alternating exposures requested	N	N
Pointing Roll	255.962521	256.1175250477915	Primary exposure time	0.000000	3.2
SIM focus pos (mm)	-0.684267	-0.6828225247311905			
SIM defocus (mm)	0	0.001444936568705701			
SIM translation stage pos (mm)	-190.132523	-190.1425803651734			
SIM translation stage offset (mm)	0	0.01005778216563158			
Observation start time	113019431.184000	113018227.01184			
Observation start date	2001-08-01T02:16:07	2001-08-01T01:57:07			
Observation end time	113044431.184000	113045285.47541			
Observation end date	2001-08-01T09:12:47	2001-08-01T09:28:05			
Read mode	TIMED	TIMED			

## 2.3 Aspect





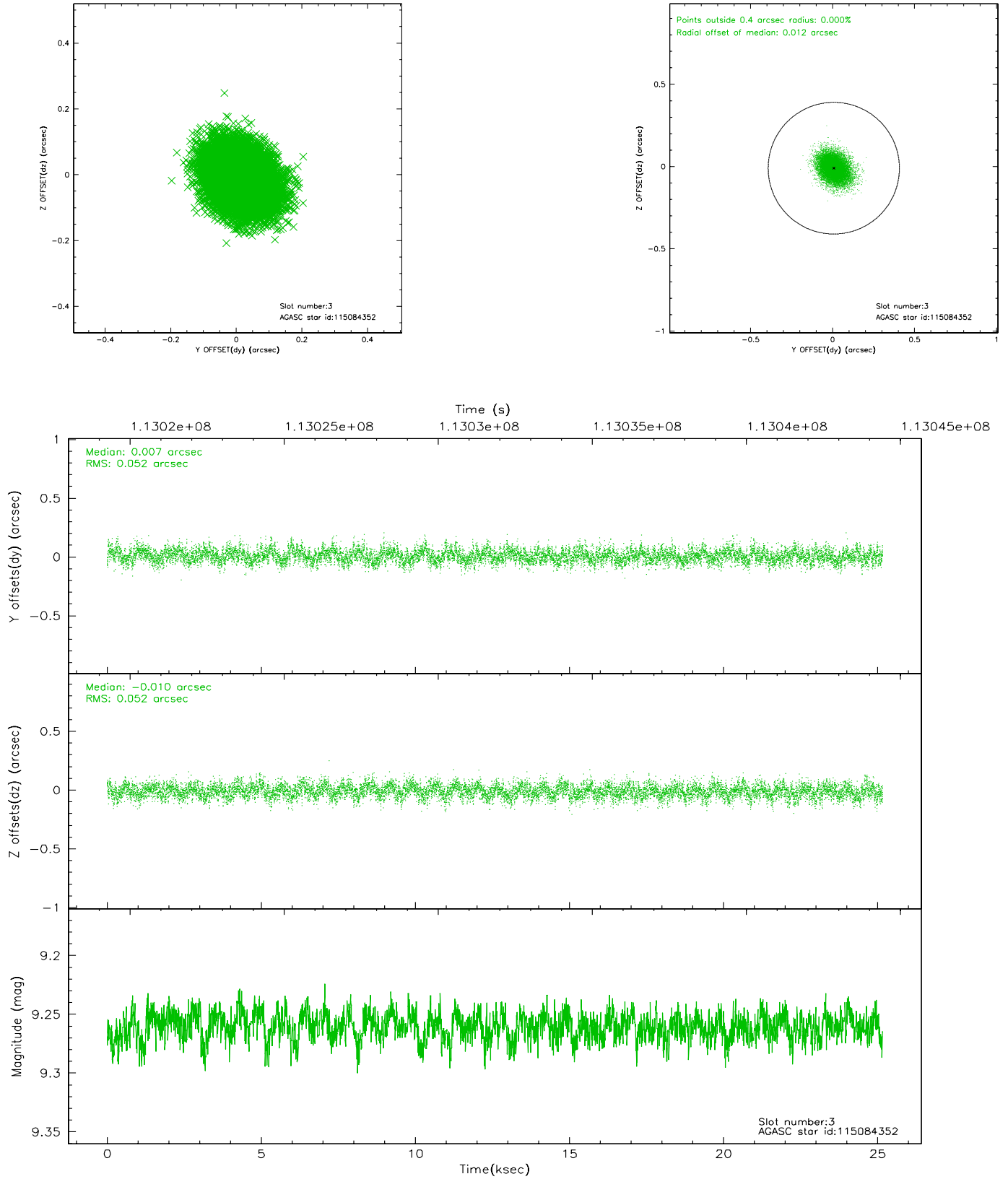
### Slot Statistics

slot	status	id	mag	n_pts	med_dy	med_dz	dr1	dr2	ra	dec	mean_y	mean_z
0	FID	ACIS-S-2	7.11	6137	-0.020	0.025	0.011	0.017	0.000000	0.000000	-754.41	-1727.45
1	FID	ACIS-S-4	7.20	6137	-0.090	0.003	0.014	0.023	0.000000	0.000000	2158.72	180.94
2	FID	ACIS-S-5	7.24	6137	0.078	-0.020	0.008	0.013	0.000000	0.000000	-1807.03	174.66
3	GUIDE	115084352	9.26	12270	0.007	-0.010	0.078	0.128	190.760225	11.783180	-623.72	791.87
4	GUIDE	115083432	9.75	12259	-0.071	-0.033	0.123	0.196	190.888504	12.192141	-2162.04	871.23
5	GUIDE	115085728	10.04	12263	-0.167	-0.130	0.136	0.218	190.191864	12.341254	-2088.11	-1636.62
6	GUIDE	115084280	10.14	12255	-0.083	-0.048	0.113	0.183	190.781448	11.930338	-1156.15	735.20
7	GUIDE	115081808	8.89	12267	0.312	0.221	0.084	0.140	191.005561	10.921316	2174.23	2388.70

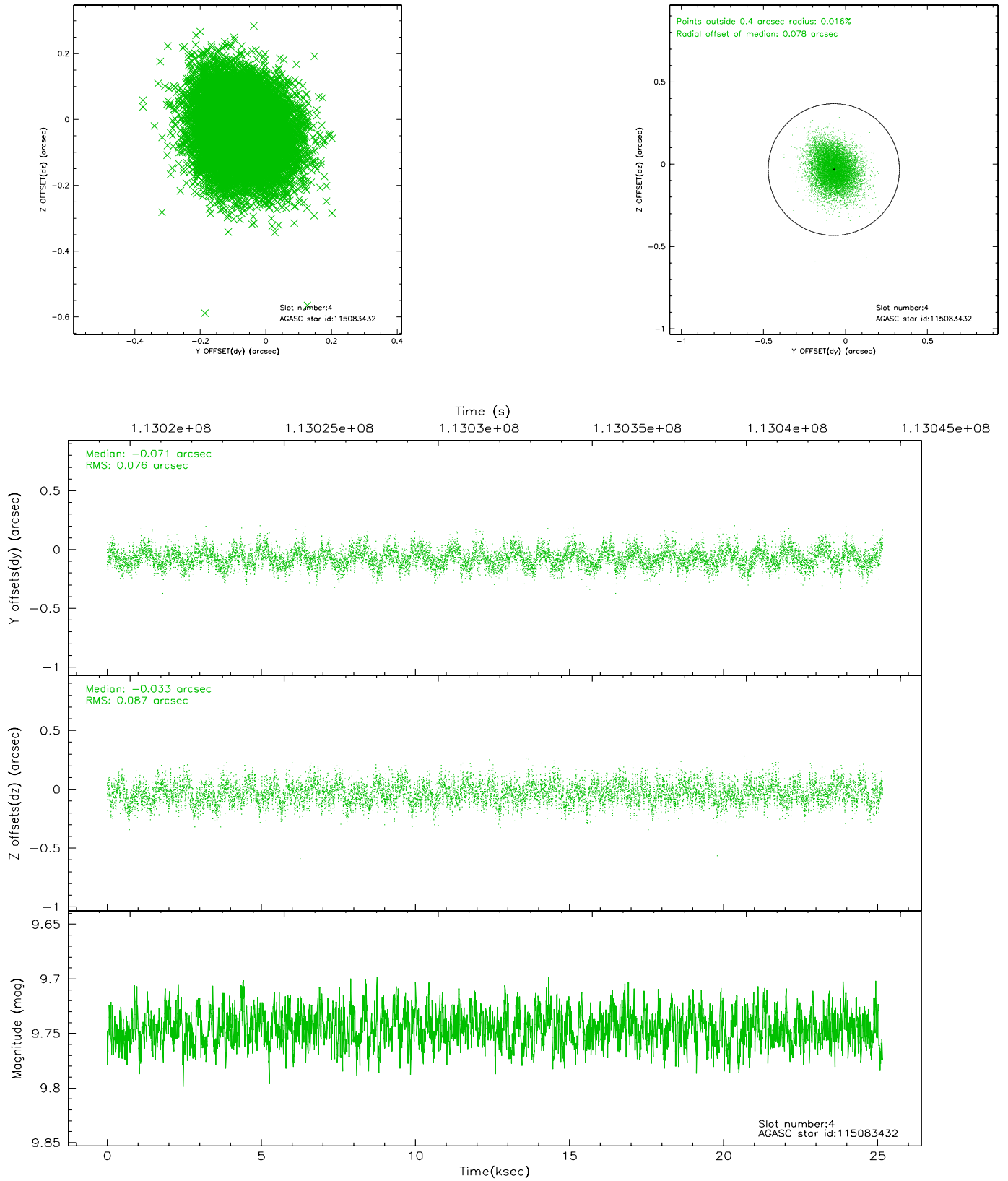


## 2.4 Star Slots

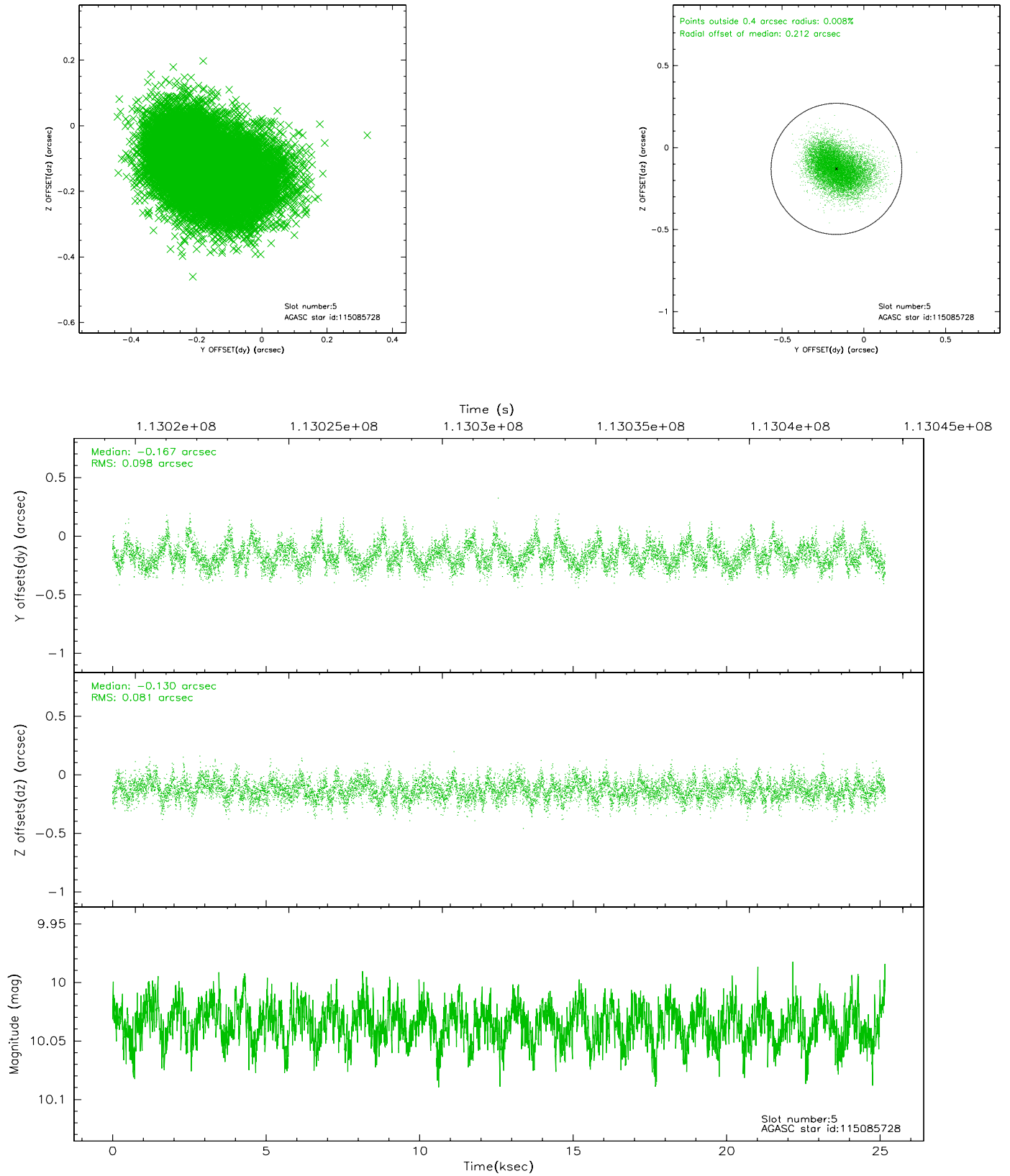
### 2.4.1 Slot 3



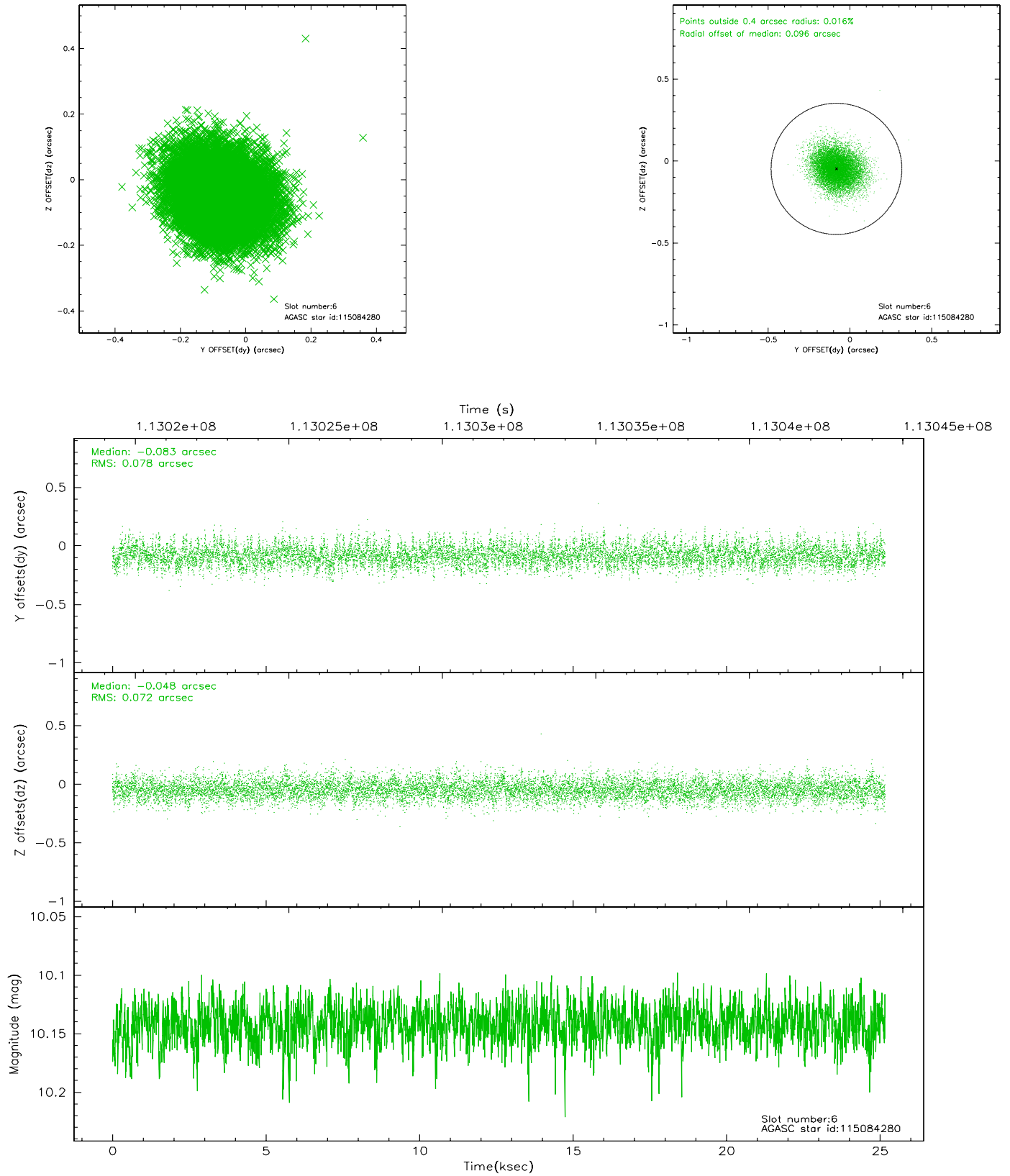
## 2.4.2 Slot 4



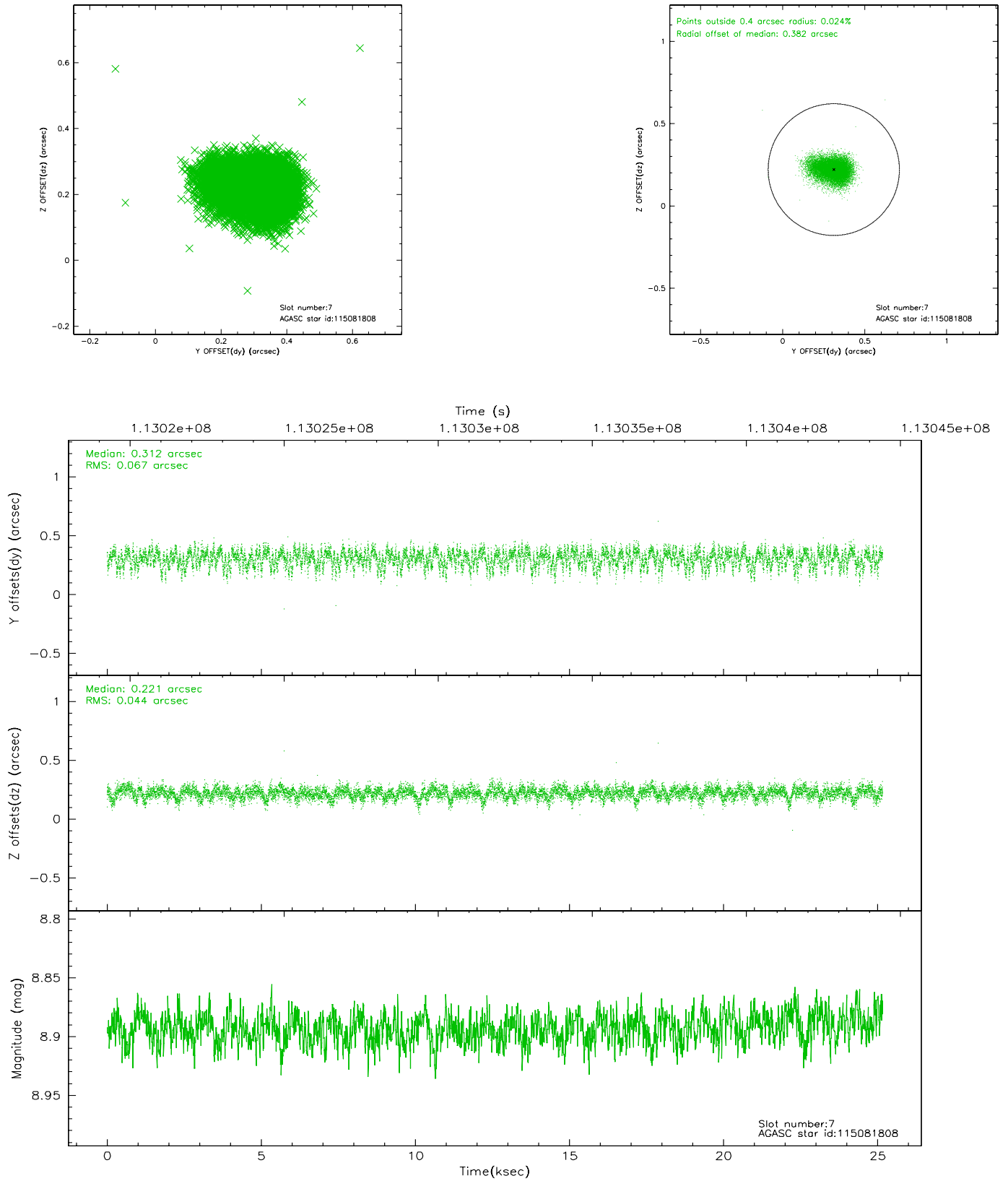
### 2.4.3 Slot 5



## 2.4.4 Slot 6

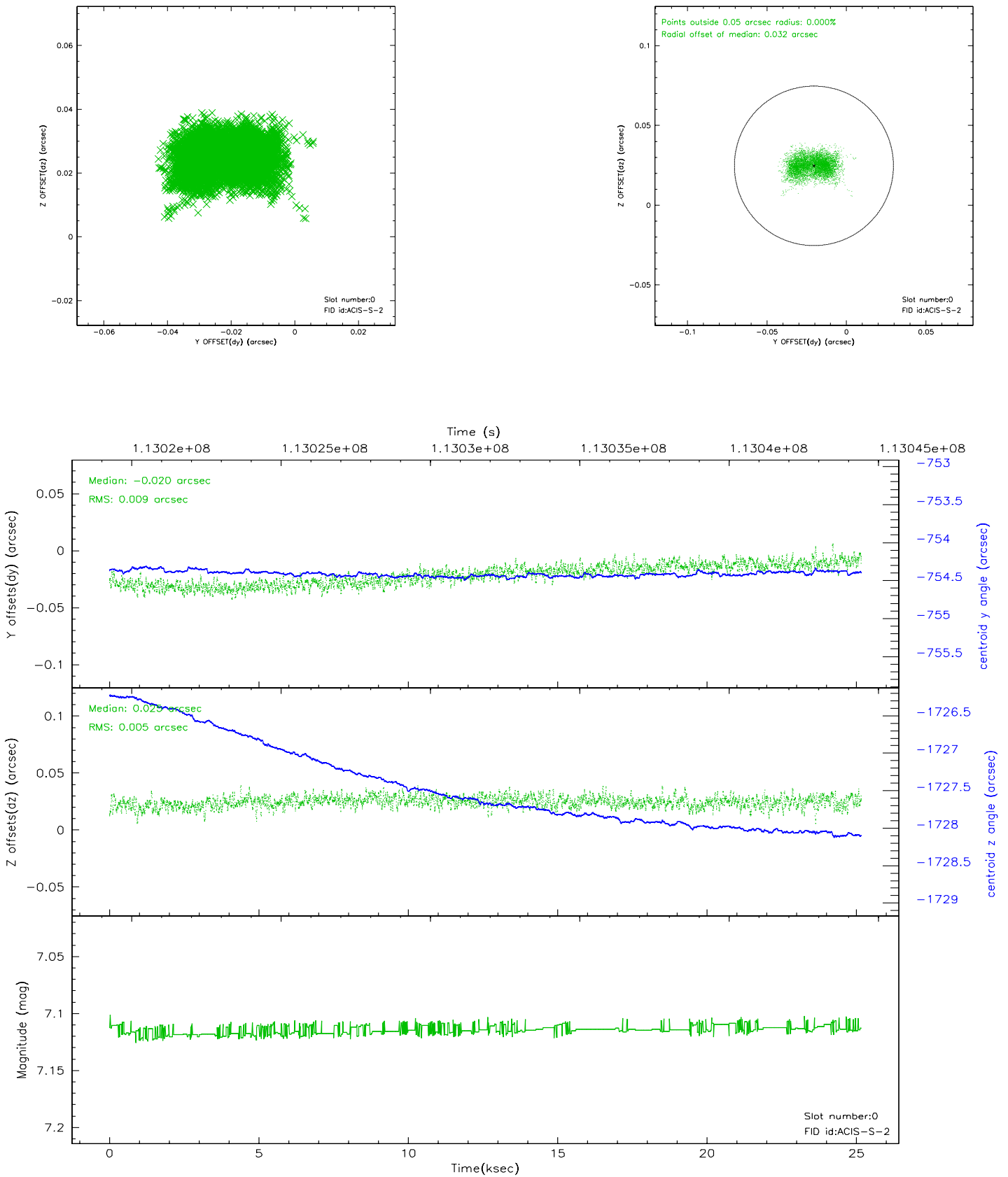


## 2.4.5 Slot 7

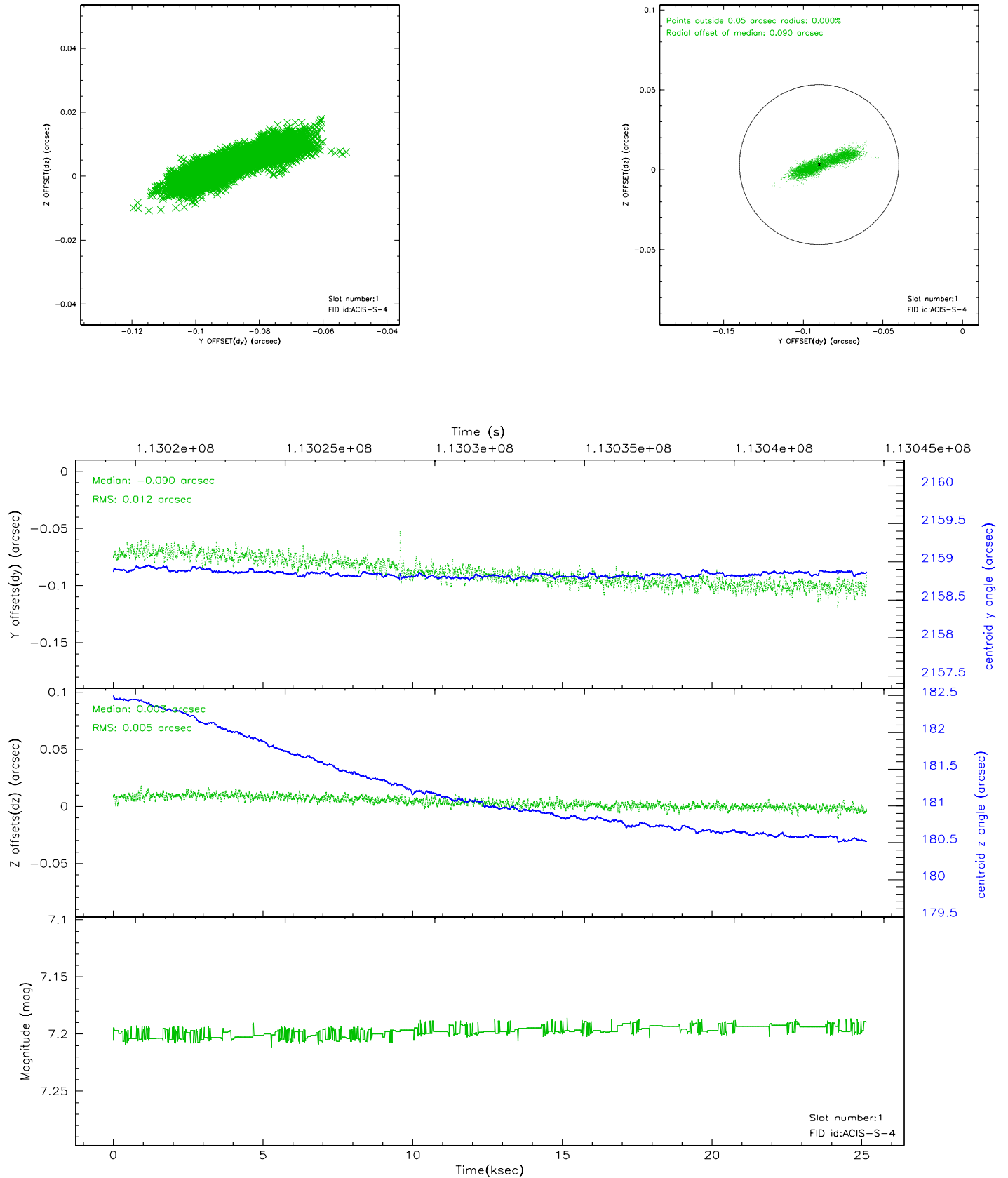


## 2.5 FID Slots

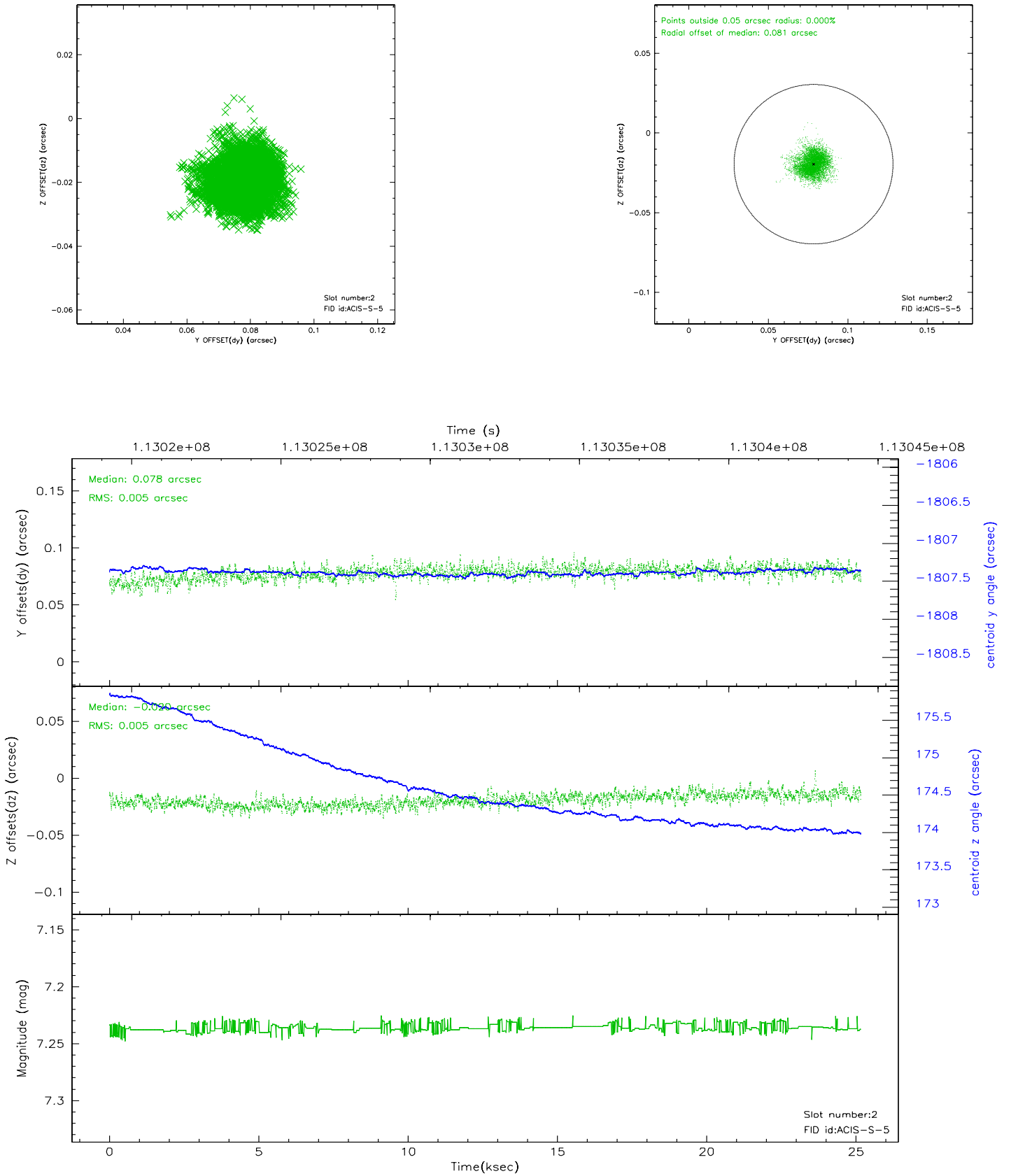
### 2.5.1 Slot 0



## 2.5.2 Slot 1

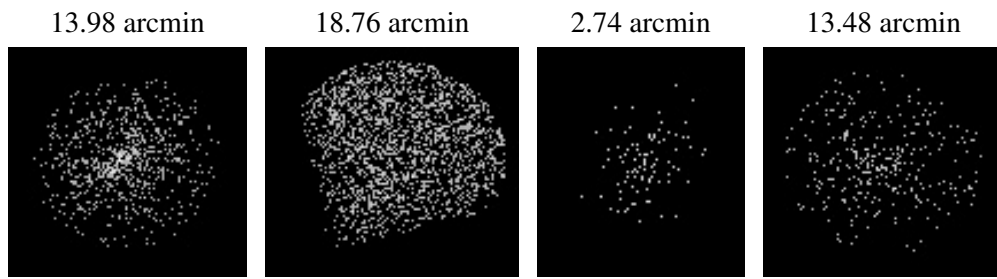


### 2.5.3 Slot 2





### 3 Point Sources



## A Summary

### A.1 Status

V&V Scientist	Beth Sundheim
V&V Date (YYYY-MM-DD)	2006.12.17
V&V Edition	1
V&V Disposition and Status	OK
V&V Charge Time	25.155

### A.2 Comments