

V&V Reference Report

L2 ASCDS Version : 8.4.5

Observation 1948 - L2 Version 3
Chandra X-Ray Center

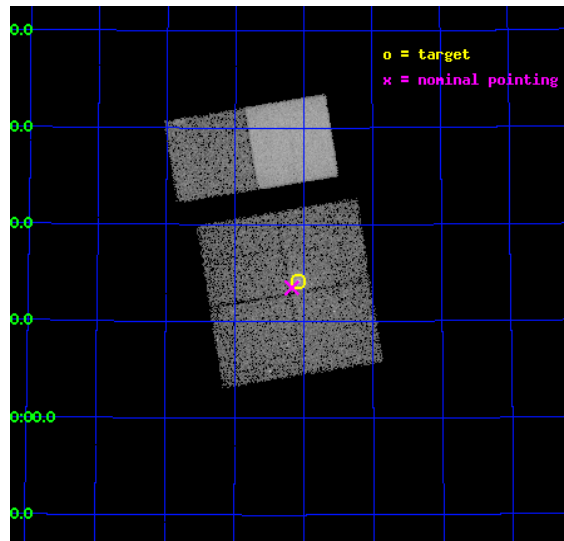
L2 Processing Date : Sep 16 2012

Contents

1	Front	2
2	OBI	3
2.1	OBI	3
2.1.1	Images	3
2.1.2	Bias	3
2.1.3	Parameters	4
2.1.4	Events	4
2.2	Compared Parameters	5
2.3	Aspect	6
2.4	Star Slots	9
2.4.1	Slot 3	9
2.4.2	Slot 4	10
2.4.3	Slot 5	11
2.4.4	Slot 6	12
2.4.5	Slot 7	13
2.5	FID Slots	14
2.5.1	Slot 0	14
2.5.2	Slot 1	15
2.5.3	Slot 2	16
A	Summary	17
A.1	Status	17
A.2	Comments	17

1 Front

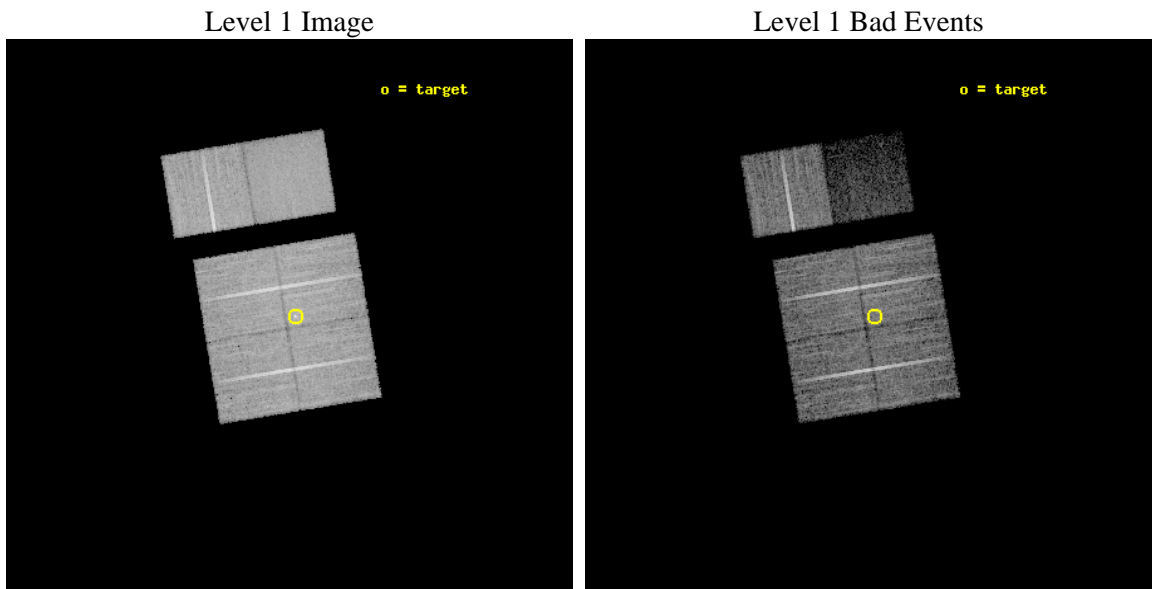
seq_num	500125	Sequence number
obs_id	1948	Observation id
title	A POSSIBLE IDENTIFICATION FOR THE EGRET SOURCE 3EG J2227+6122	Prop
observer	Prof. Jules Halpern	Principal investigator
object	3EG J2227+6122	Source name
dtcycle	0	
cycle	P	events from which exps? Prim/Second/Both
ra_targ	337.270833	Observer's specified target RA [deg]
dec_targ	61.236917	Observer's specified target Dec [deg]
ra_nom	337.29339256516	Nominal RA [deg]
dec_nom	61.224750232326	Nominal Dec [deg]
roll_nom	350.65422933821	Nominal Roll [deg]
revision	3	Processing version of data
ontime	17954.501403406	Sum of GTIs [s]
livetime	17727.150695734	Livetime [s]
ontime0	17954.378283411	Sum of GTIs [s]
ontime1	17954.419323415	Sum of GTIs [s]
ontime2	17954.460363418	Sum of GTIs [s]
ontime3	17954.501403406	Sum of GTIs [s]
ontime6	17954.583483413	Sum of GTIs [s]
ontime7	17954.54244341	Sum of GTIs [s]
l2events	104040	Number of level 2 events



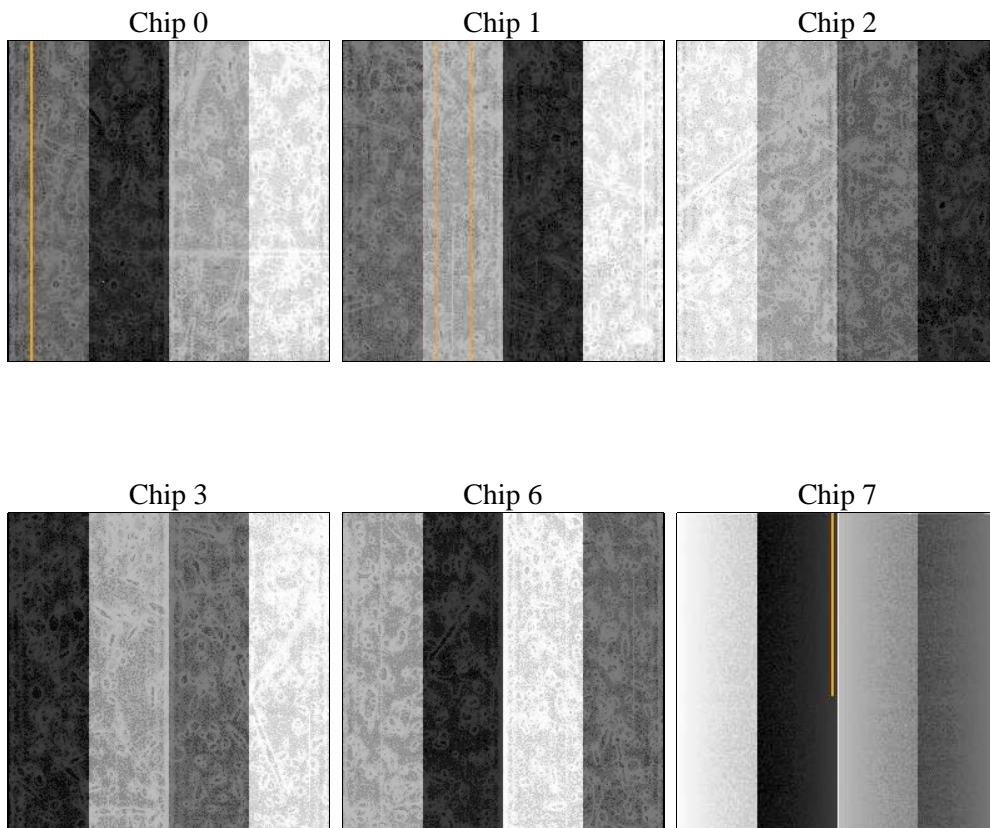
2 OBI

2.1 OBI

2.1.1 Images



2.1.2 Bias



2.1.3 Parameters

obi_num	0	Obi number	sched_exp_time	18000.000000	[s] Scheduled observation exposure time
ascdsver	8.4.5	Processing system revision	ontime	17954.501403406	Sum of GTIs [s]
caldsver	4.5.1.1	 	ontime0	17954.378283411	Sum of GTIs [s]
date	2012-09-16T05:11:55	Date and time of file creation	ontime1	17954.419323415	Sum of GTIs [s]
revision	3	Processing version of data	ontime2	17954.460363418	Sum of GTIs [s]
			ontime3	17954.501403406	Sum of GTIs [s]
			ontime6	17954.583483413	Sum of GTIs [s]
			ontime7	17954.54244341	Sum of GTIs [s]
			l1events	488675	Number of level 1 events

2.1.4 Events

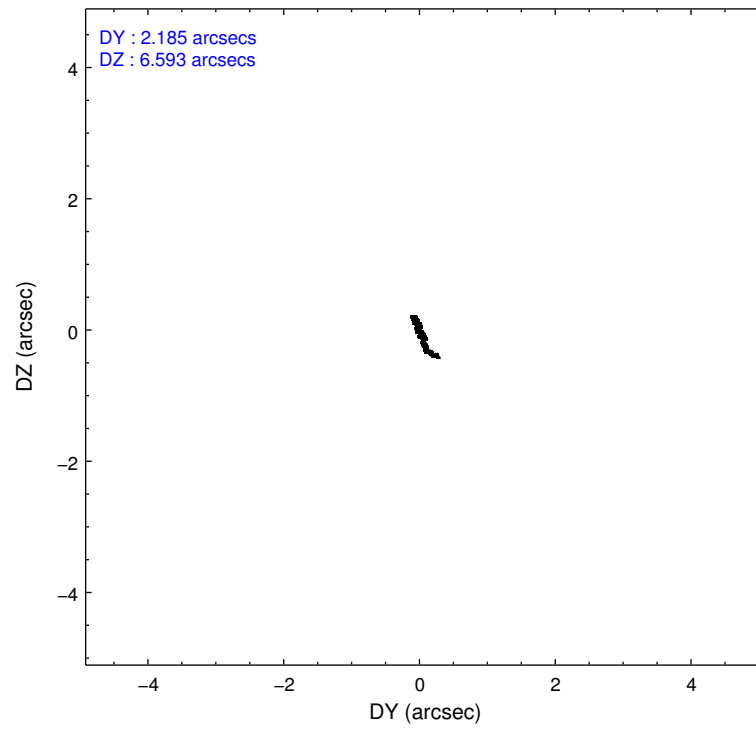
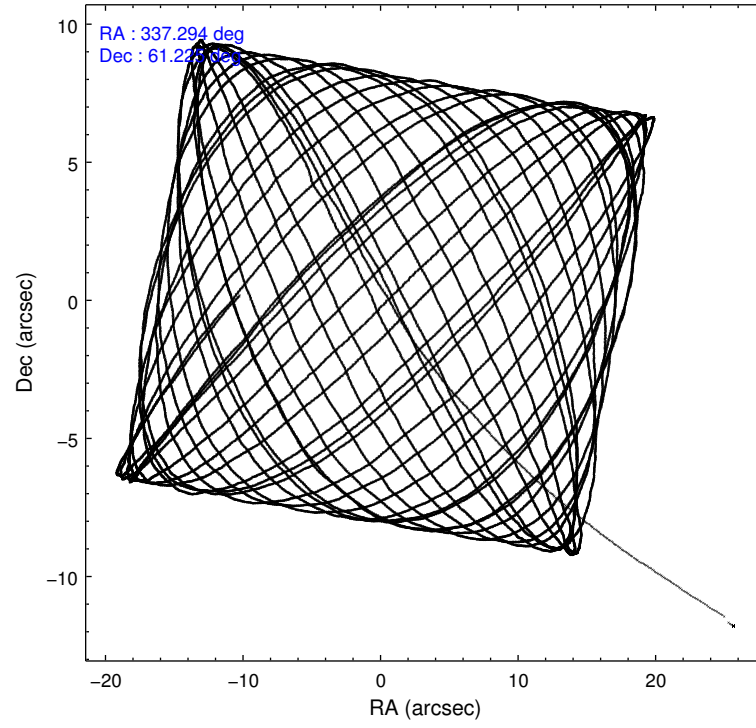
	ccd 0	ccd 1	ccd 2	ccd 3	ccd 6	ccd 7		ccd 0	ccd 1	ccd 2	ccd 3	ccd 6	ccd 7
level 1 events	76959	76647	84780	88047	87134	75108	grade 0 events	5903	6487	5606	6890	6701	7864
rejected events	65882	64835	74411	76019	75323	18240		7%	8%	6%	7%	7%	10%
rejected %	85%	84%	87%	86%	86%	24%	grade 1 events	43	43	40	50	54	66
								0%	0%	0%	0%	0%	0%
							grade 2 events	1956	1892	1902	1928	1937	12296
								2%	2%	2%	2%	2%	16%
							grade 3 events	1010	1053	881	985	976	5428
								1%	1%	1%	1%	1%	7%
							grade 4 events	947	1040	870	937	934	5506
								1%	1%	1%	1%	1%	7%
							grade 5 events	1208	1396	1144	1398	1553	4651
								1%	1%	1%	1%	1%	6%
							grade 6 events	1263	1340	1114	1292	1266	25777
								1%	1%	1%	1%	1%	34%
							grade 7 events	64629	63396	73223	74567	73713	13520
								83%	82%	86%	84%	84%	18%

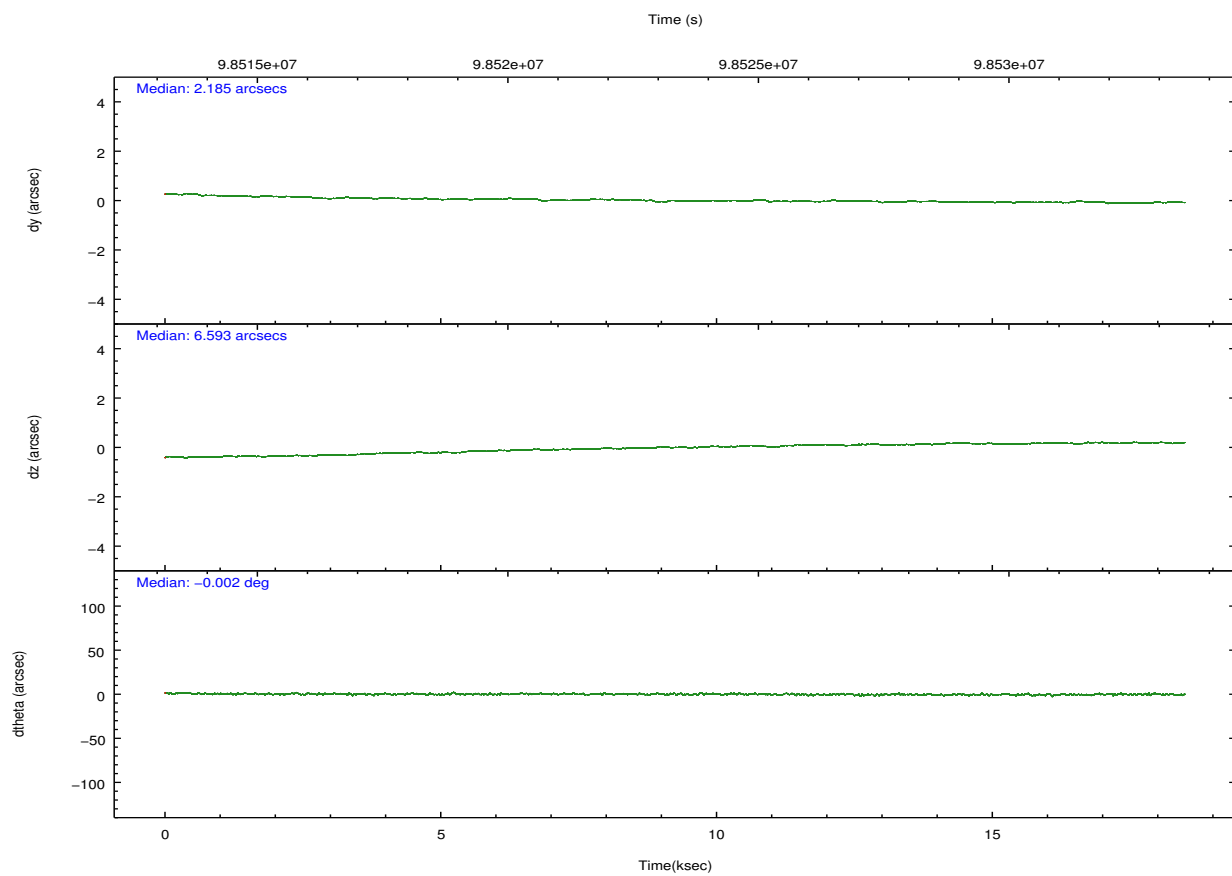
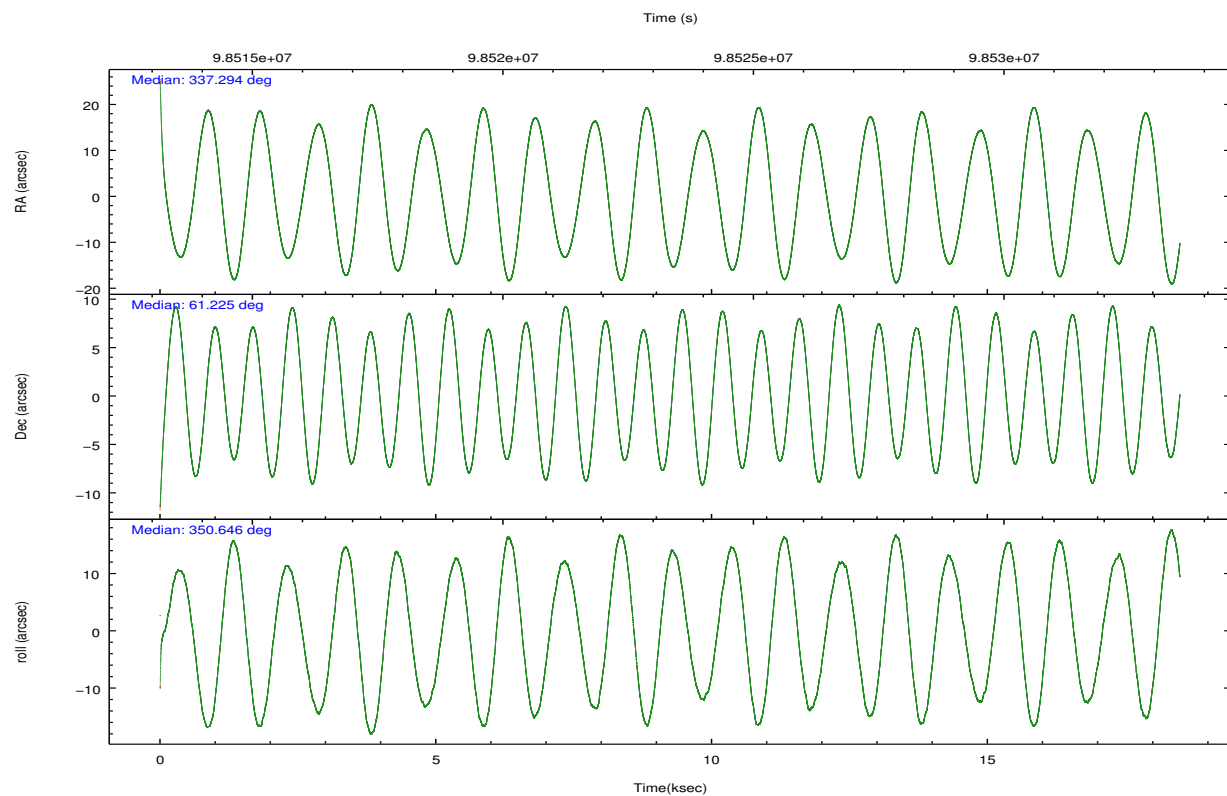
2.2 Compared Parameters

Parameter	Planned	Actual
Instrument	ACIS	ACIS
Detector	ACIS-012367	ACIS-012367
Grating	NONE	NONE
Data mode	FAINT	FAINT
Observation mode	POINTING	POINTING
[deg] Pointing RA	337.240058	337.2933925651574
[deg] Pointing Dec	61.215071	61.2247502323258
[deg] Pointing Roll	350.492280	350.6542293382139
[mm] SIM focus pos	-0.782348	-0.7809083437167272
[mm] SIM defocus	0	0.001439871863259334
[mm] SIM translation stage pos	-233.592463	-233.5874344608287
[mm] SIM translation stage offset	0	-0.005018542100998502
[s] Observation start time (MET)	98514581.184000	98513472.973094
Observation start date	2001-02-14T05:08:37	2001-02-14T04:51:12
[s] Observation end time (MET)	98532581.184000	98533298.523858
Observation end date	2001-02-14T10:08:37	2001-02-14T10:21:38
Read mode	TIMED	TIMED

Parameter	Planned	Actual
Obspar format version number	7	7
Obspar file type	PREDICTED	ACTUAL
Obspar update status	NONE	UPDATED
Number of optional ACIS chips dropped	0	0
On-chip summing requested	N	N
Subarray requested	NONE	NONE
Alternating exposures requested	N	N
[s] Primary exposure time	0.000000	3.2

2.3 Aspect



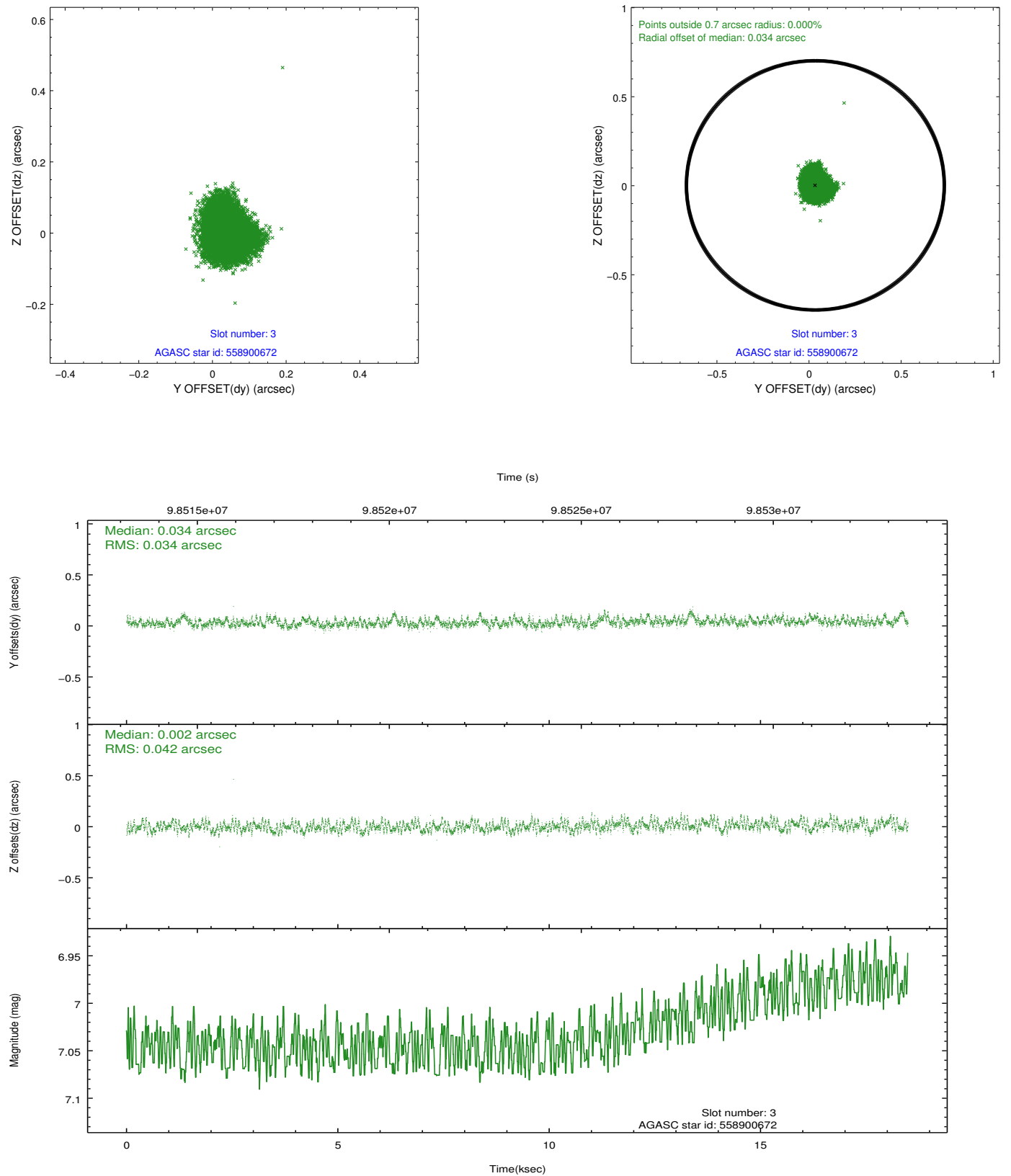


Slot Statistics

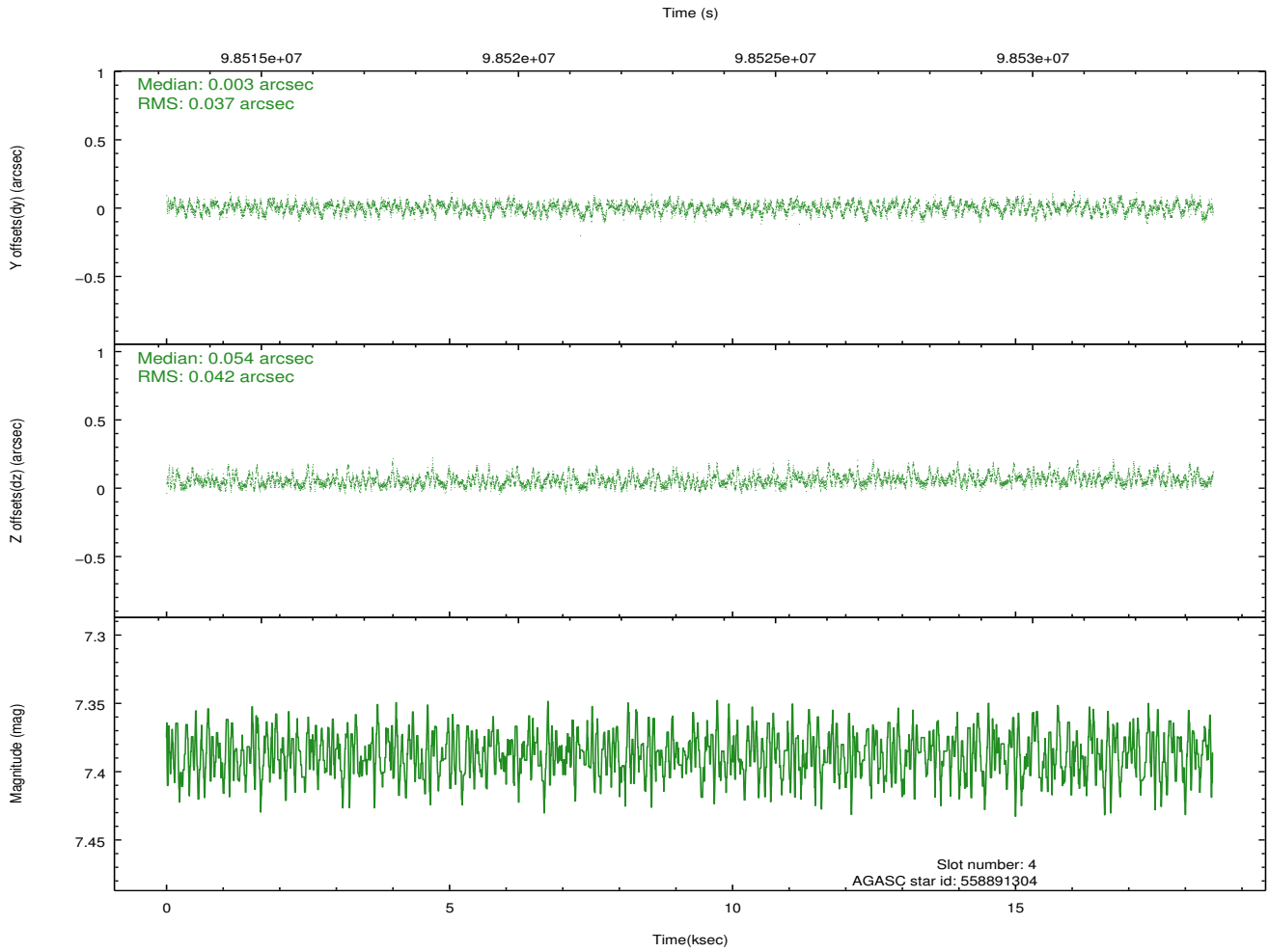
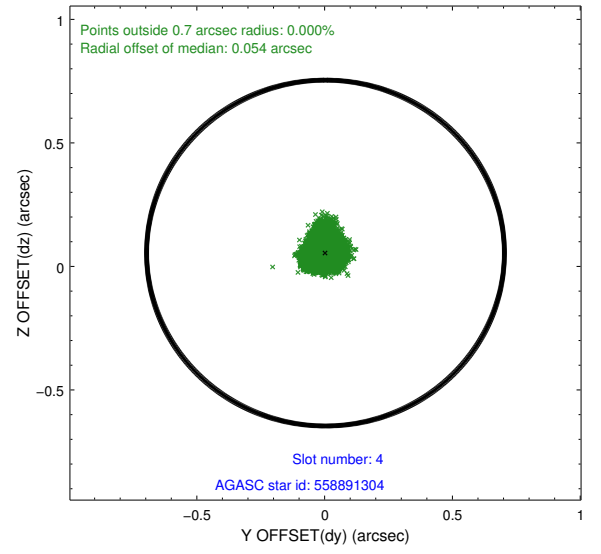
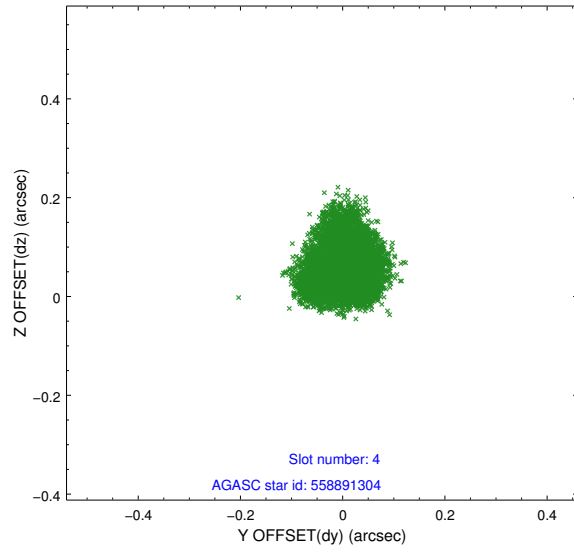
slot	status	id	mag	n_pts	med_dy	med_dz	dr1	dr2	ra	dec	mean_y	mean_z
0	FID	ACIS-I-2	7.15	4510	-0.034	-0.056	0.016	0.024	0.000000	0.000000	-756.60	-836.35
1	FID	ACIS-I-4	7.18	4510	-0.028	0.042	0.016	0.027	0.000000	0.000000	2157.37	1069.82
2	FID	ACIS-I-5	7.23	4510	-0.040	0.082	0.012	0.020	0.000000	0.000000	-1810.16	1067.95
3	GUIDE	558900672	7.03	9020	0.034	0.002	0.058	0.091	338.471449	61.778128	1728.51	2364.74
4	GUIDE	558891304	7.39	9019	0.003	0.054	0.060	0.094	337.635934	61.623738	424.01	1564.78
5	GUIDE	558894960	7.35	9020	-0.014	-0.011	0.046	0.072	337.171618	61.455544	-259.90	834.07
6	GUIDE	558897568	8.08	9019	-0.035	0.013	0.057	0.092	337.247030	60.671143	335.12	-1929.59
7	GUIDE	558894672	8.49	9015	0.012	-0.058	0.083	0.135	336.308268	60.836317	-1389.25	-1604.30

2.4 Star Slots

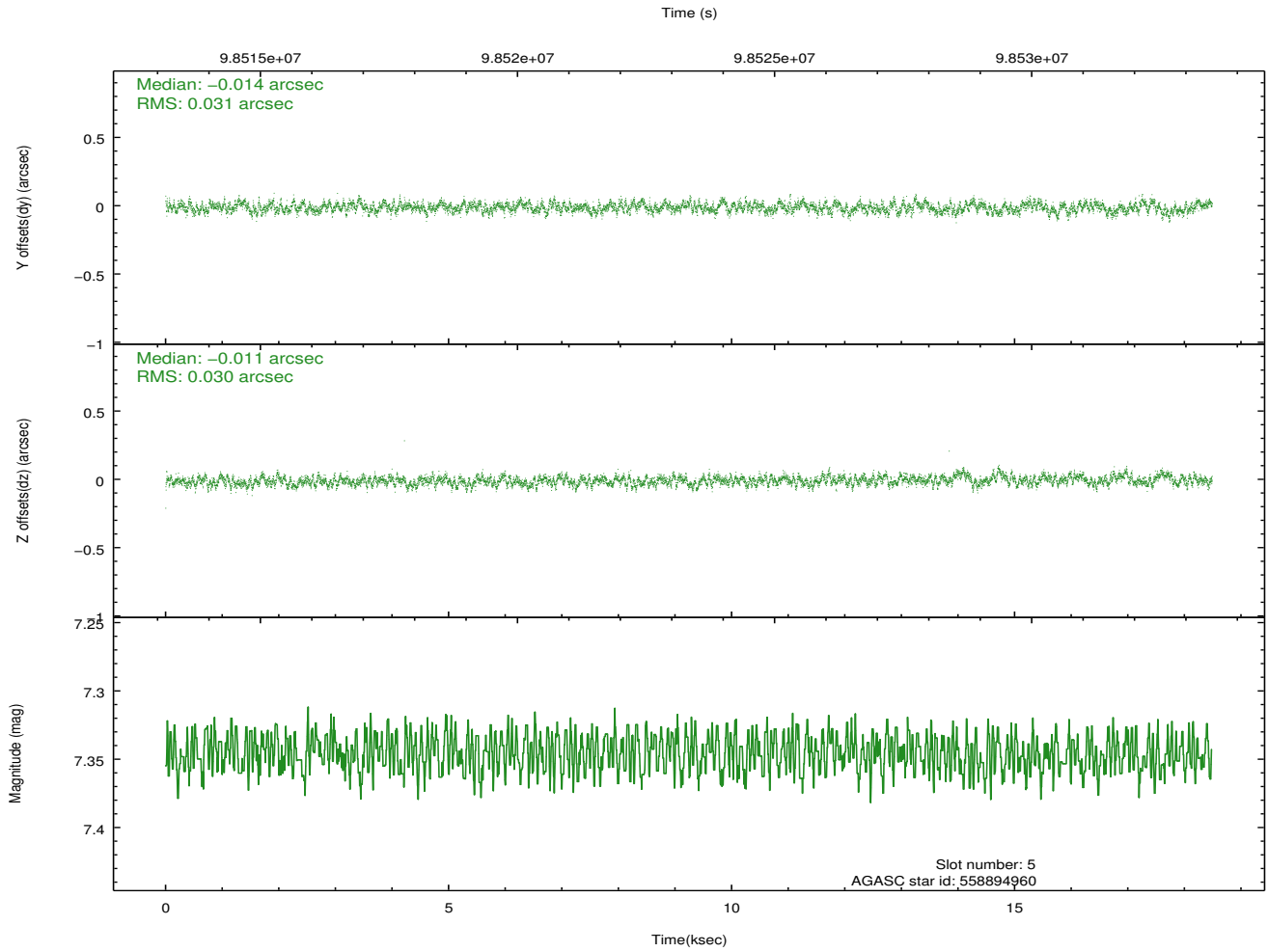
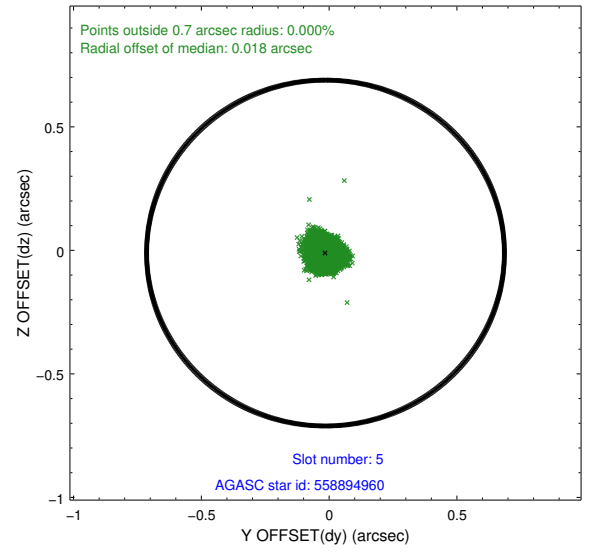
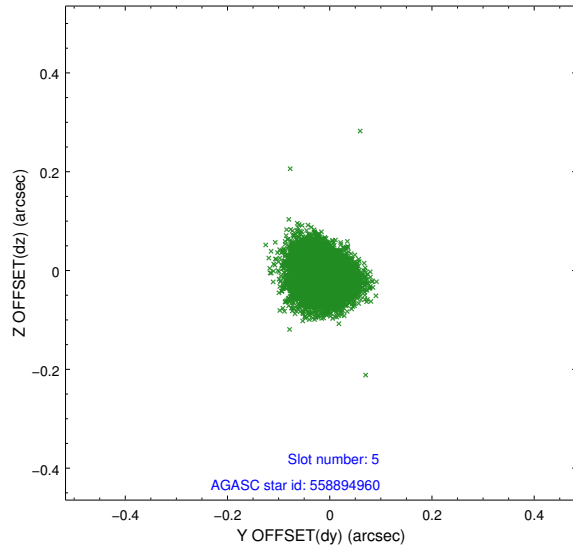
2.4.1 Slot 3



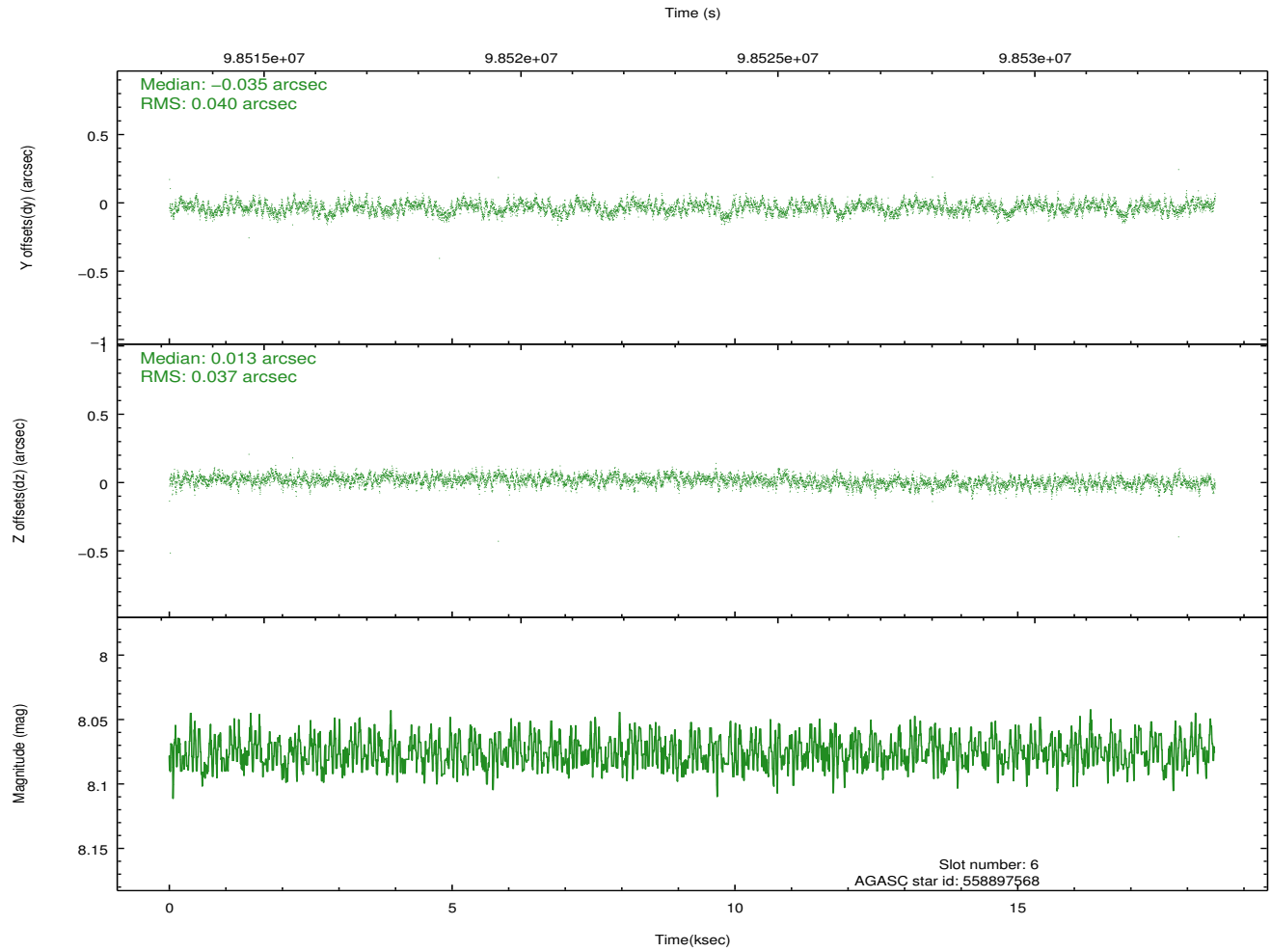
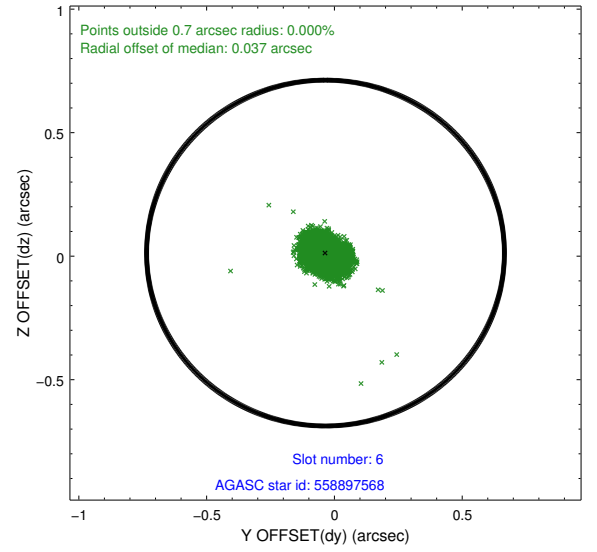
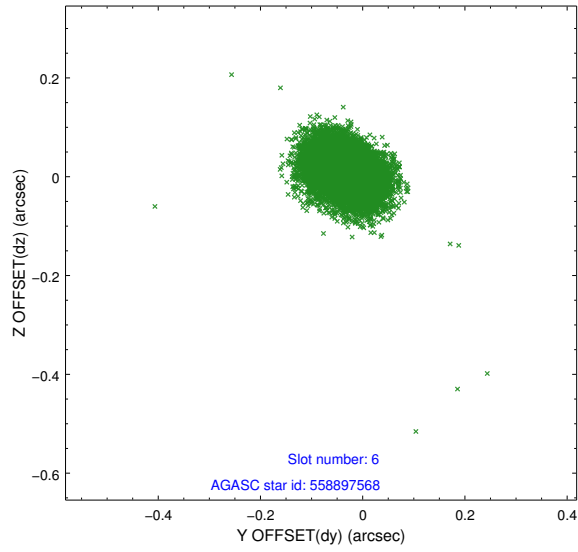
2.4.2 Slot 4



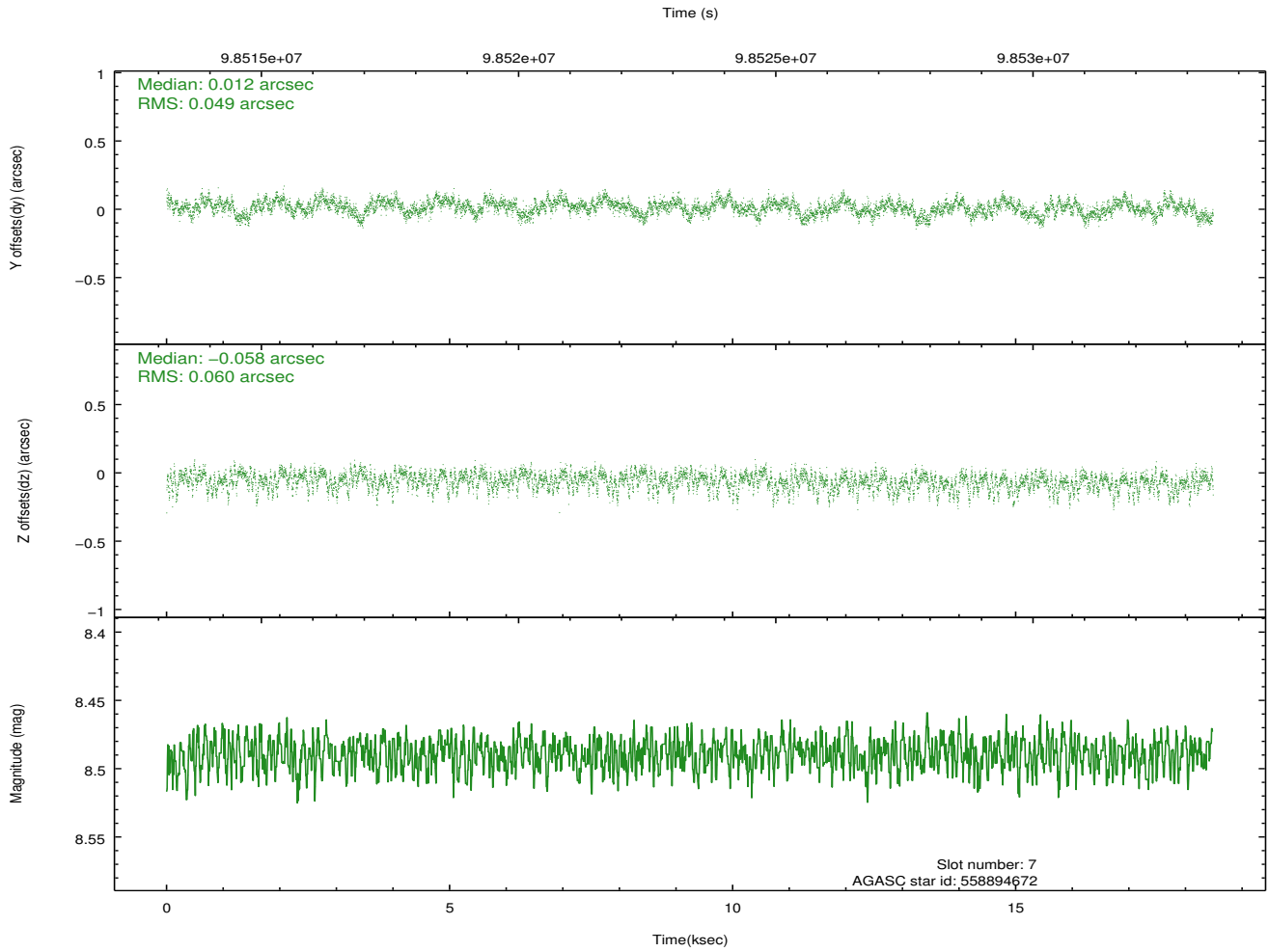
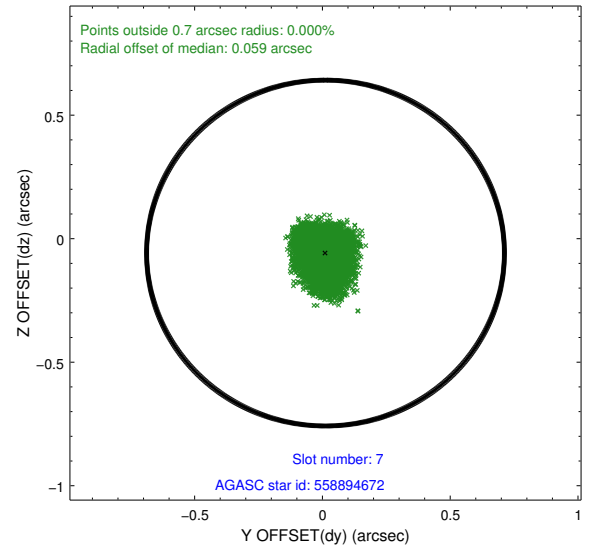
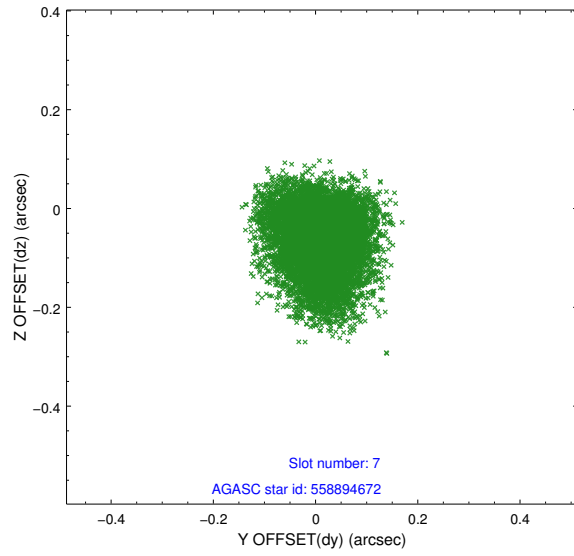
2.4.3 Slot 5



2.4.4 Slot 6

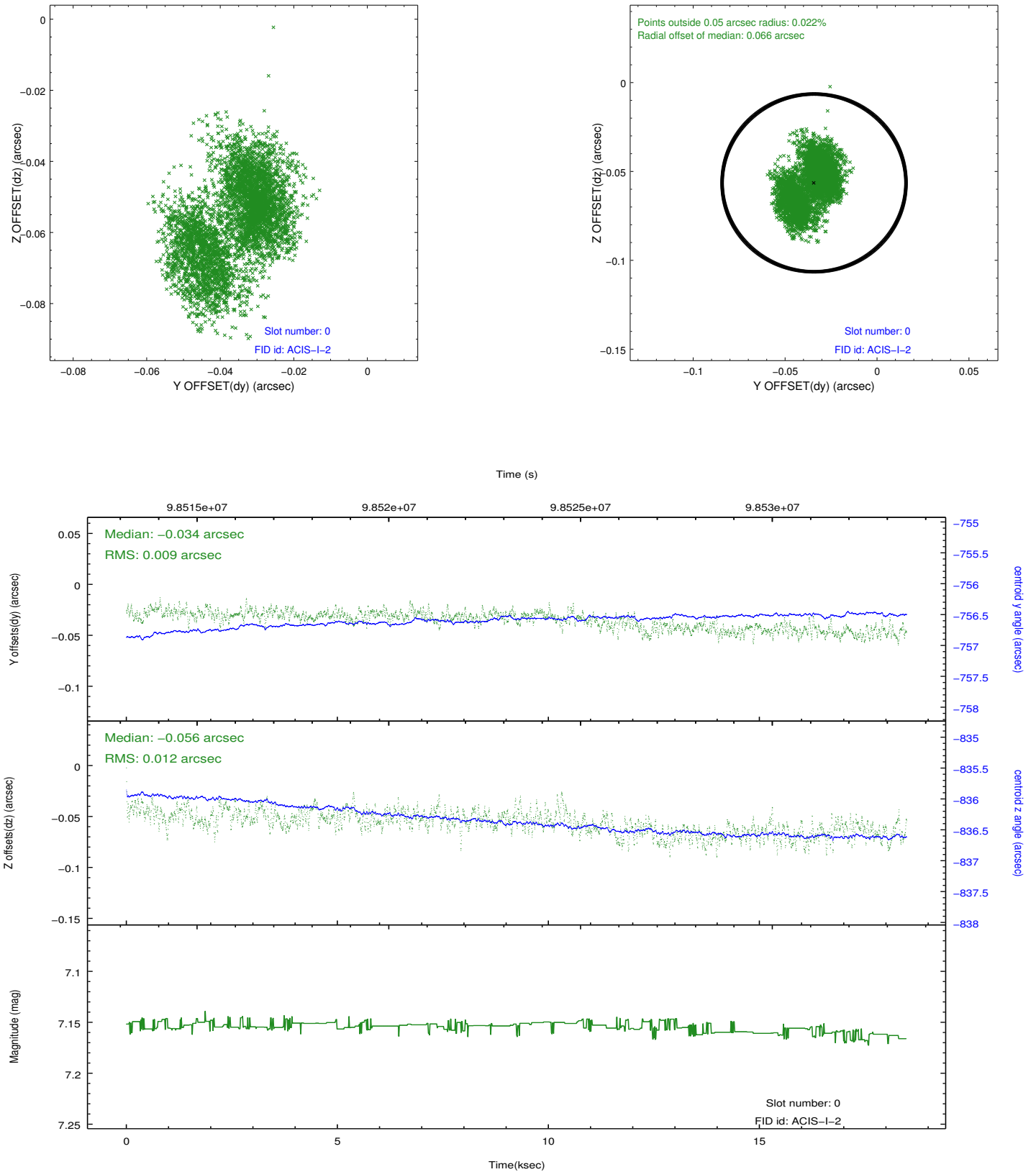


2.4.5 Slot 7

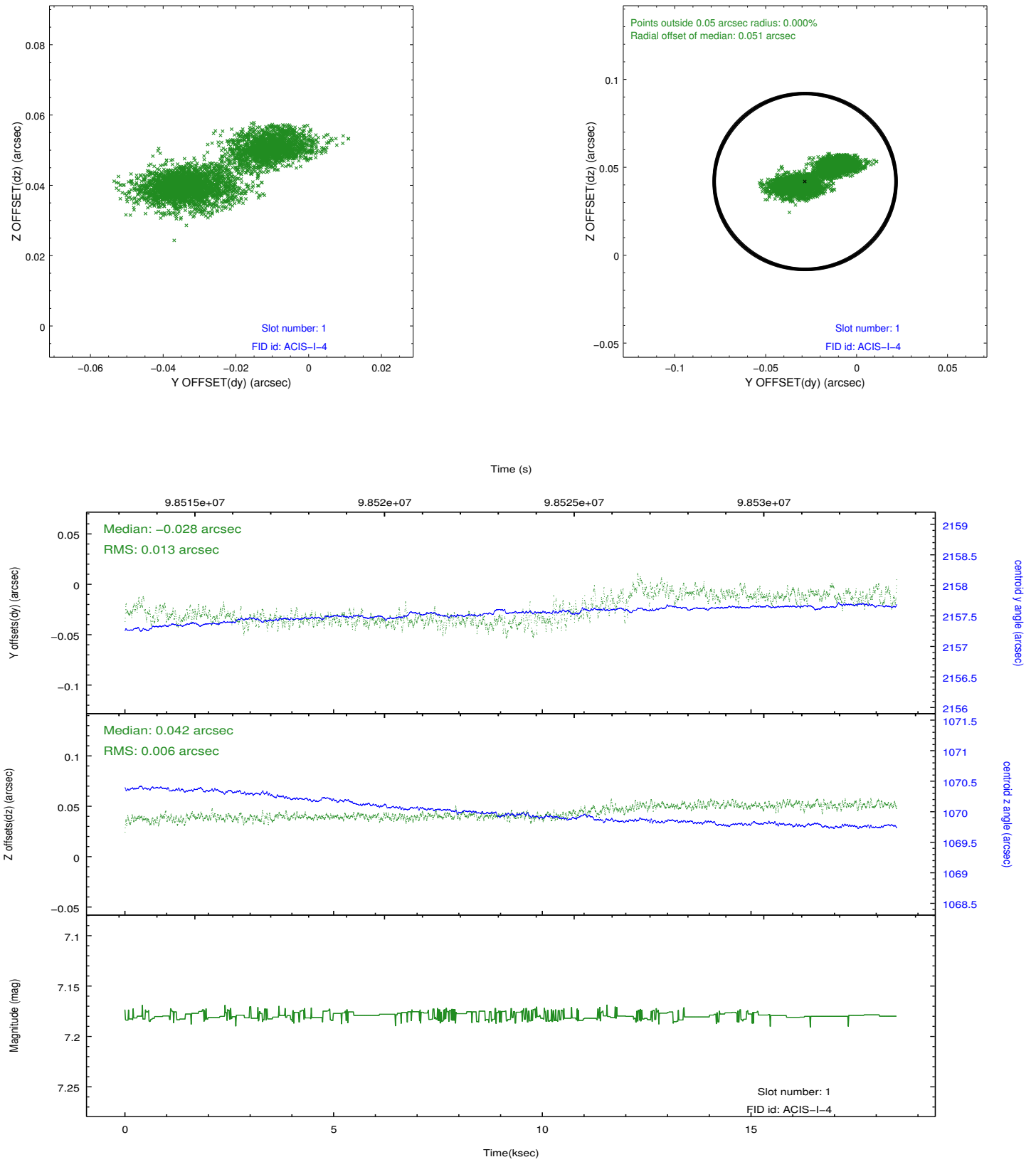


2.5 FID Slots

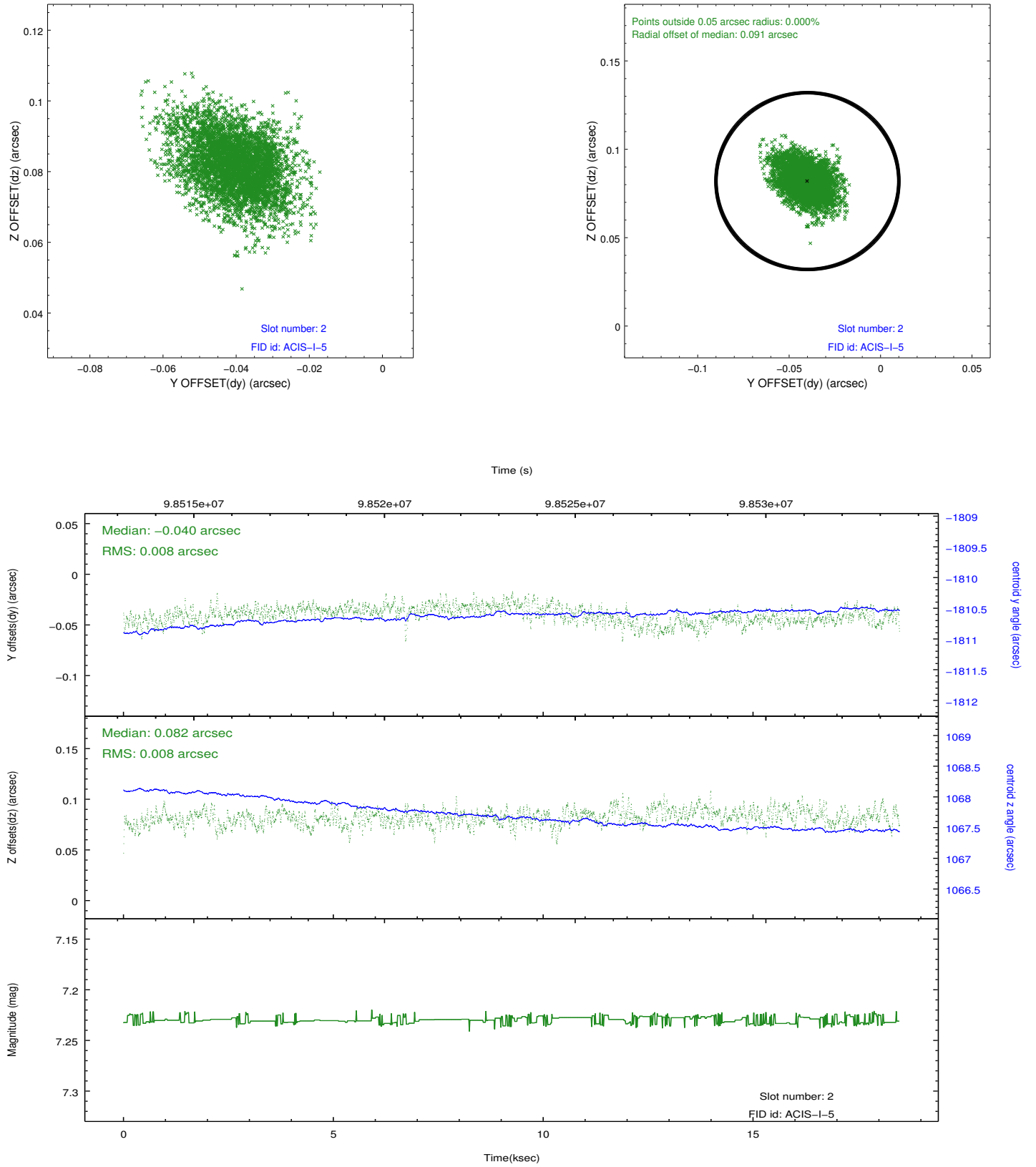
2.5.1 Slot 0



2.5.2 Slot 1



2.5.3 Slot 2



A Summary

A.1 Status

V&V Scientist	Jen Lauer
V&V Date (YYYY-MM-DD)	2012.09.19
V&V Edition	1
V&V Disposition and Status	OK
V&V Charge Time	17.955

A.2 Comments