

# V&V Reference Report

## L2 ASCDS Version : 10.4.1

Observation 17688 - L2 Version 1  
Chandra X-Ray Center

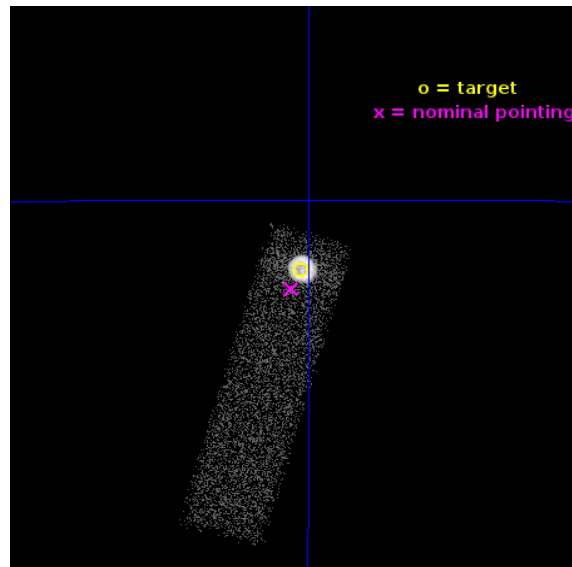
L2 Processing Date : Jul 18 2015

## Contents

<b>1</b>	<b>Front</b>	<b>2</b>
<b>2</b>	<b>OBI</b>	<b>3</b>
2.1	OBI . . . . .	3
2.1.1	Images . . . . .	3
2.1.2	Bias . . . . .	3
2.1.3	Parameters . . . . .	4
2.1.4	Events . . . . .	4
2.2	Compared Parameters . . . . .	5
2.3	Aspect . . . . .	6
2.4	Star Slots . . . . .	9
2.4.1	Slot 3 . . . . .	9
2.4.2	Slot 4 . . . . .	10
2.4.3	Slot 5 . . . . .	11
2.4.4	Slot 6 . . . . .	12
2.4.5	Slot 7 . . . . .	13
2.5	FID Slots . . . . .	14
2.5.1	Slot 0 . . . . .	14
2.5.2	Slot 1 . . . . .	15
2.5.3	Slot 2 . . . . .	16
<b>A</b>	<b>Summary</b>	<b>17</b>
A.1	Status . . . . .	17
A.2	Comments . . . . .	17

# 1 Front

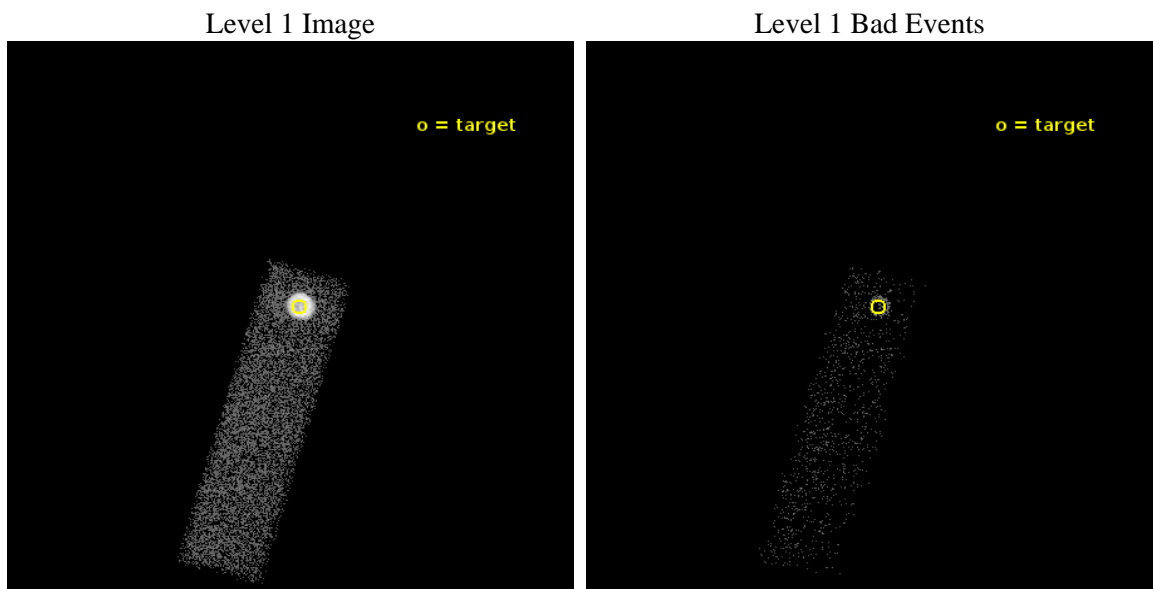
seq_num	590543	Sequence number
obs_id	17688	Observation id
title	Measuring the Spatial Distribution of the ACIS contaminant with E0102-72	Proposal title
observer	Dr. CXC Calibration	Principal investigator
object	E0102-72	Source name
dtcycle	0	&#160
cycle	P	events from which exps? Prim/Second/Both
ra_targ	16.01	Observer's specified target RA [deg]
dec_targ	-72.032028	Observer's specified target Dec [deg]
ra_nom	16.023144402001	Nominal RA [deg]
dec_nom	-72.040351737915	Nominal Dec [deg]
roll_nom	106.16914865884	Nominal Roll [deg]
revision	1	Processing version of data
ontime	10059.999400377	Sum of GTIs [s]
livetime	9569.1043473579	Livetime [s]
ontime7	10059.999400377	Sum of GTIs [s]
l2events	41975	Number of level 2 events



## 2 OBI

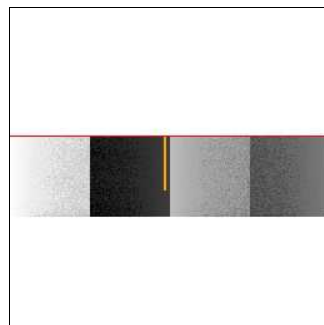
### 2.1 OBI

#### 2.1.1 Images



#### 2.1.2 Bias

Chip 7



### 2.1.3 Parameters

obi_num	0	Obi number	sched_exp_time	10000.000000	[s] Scheduled observation exposure time
ascdsver	10.4.1	Processing system revision	ontime	10059.999400377	Sum of GTIs [s]
caldsver	4.6.8	&#160	ontime7	10059.999400377	Sum of GTIs [s]
date	2015-07-18T12:39:36	Date and time of file creation	l1events	49412	Number of level 1 events
revision	1	Processing version of data			

### 2.1.4 Events

	<b>ccd 7</b>
level 1 events	49412
rejected events	7190
rejected %	14%

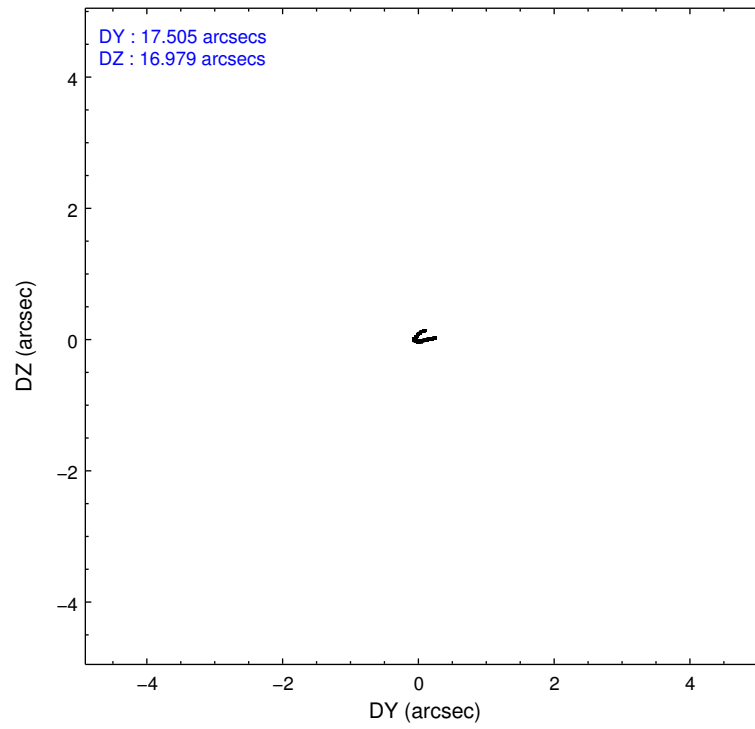
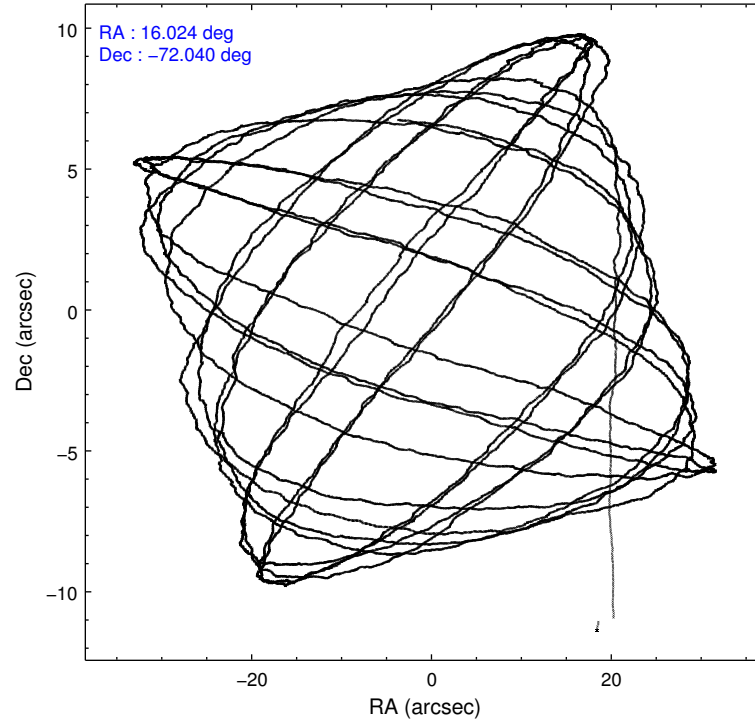
	<b>ccd 7</b>
grade 0 events	11061
	22%
grade 1 events	26
	0%
grade 2 events	11500
	23%
grade 3 events	5089
	10%
grade 4 events	5019
	10%
grade 5 events	1794
	3%
grade 6 events	9557
	19%
grade 7 events	5366
	10%

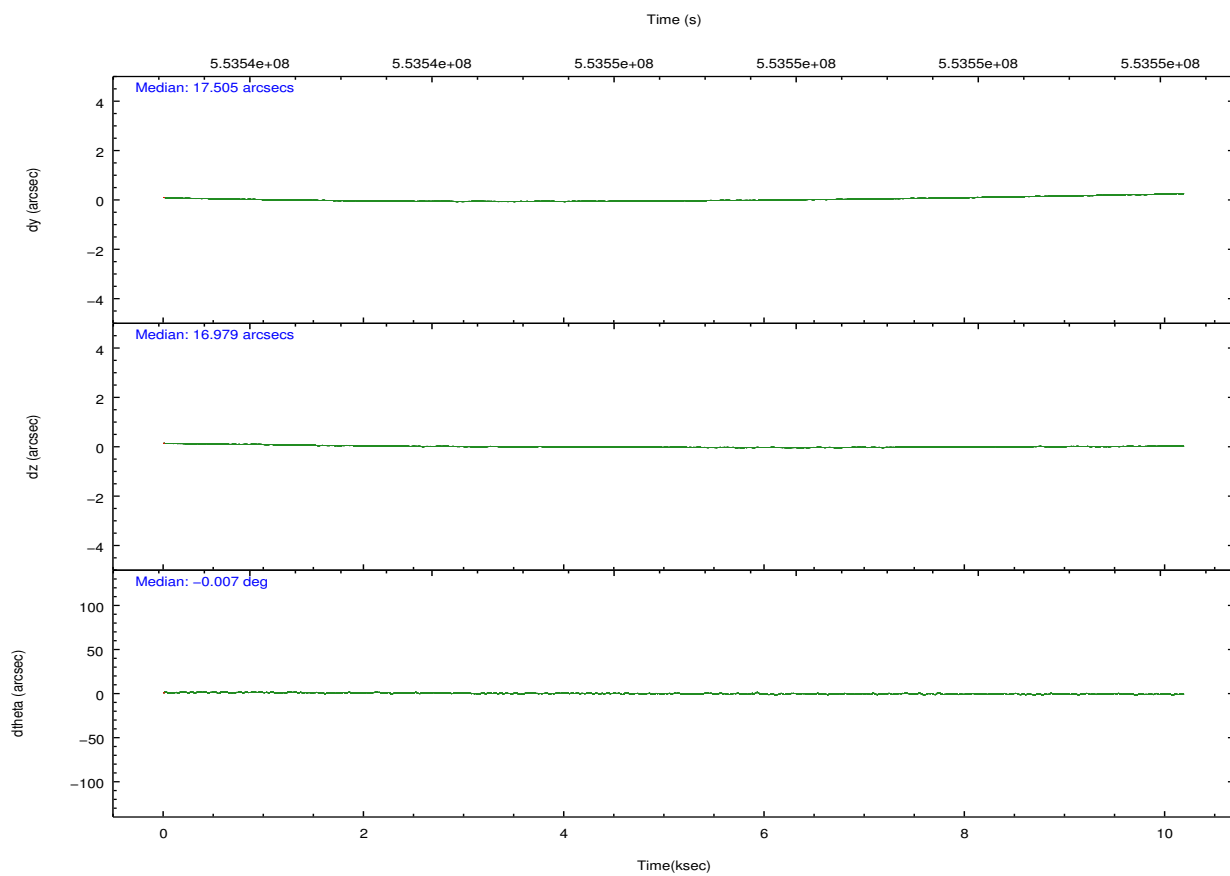
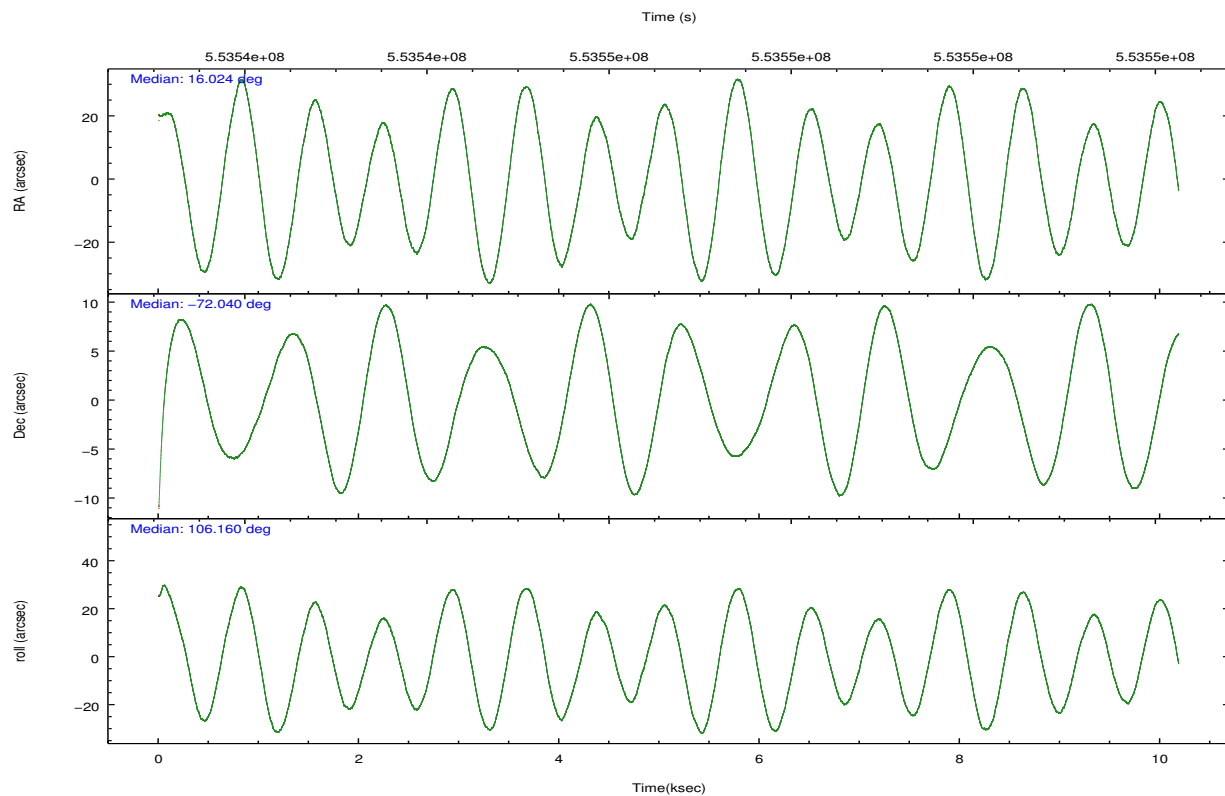


## 2.2 Compared Parameters

Parameter	Planned	Actual	Parameter	Planned	Actual
Instrument	ACIS	ACIS	Obspar format version number	7	7
Detector	ACIS-7	ACIS-7	Obspar file type	PREDICTED	ACTUAL
Grating	NONE	NONE	Obspar update status	NONE	UPDATED
Data mode	VFAINT	VFAINT	Number of optional ACIS chips dropped	0	0
Observation mode	POINTING	POINTING	On-chip summing requested	N	N
[deg] Pointing RA	16.088099	16.02314440200149	Subarray requested	CUSTOM	1/4
[deg] Pointing Dec	-72.059086	-72.04035173791479	Subarray start row	360	360
[deg] Pointing Roll	106.074299	106.1691486588375	Subarray row count	256	256
[mm] SIM focus pos	-0.684267	-0.6828225247311905	Alternating exposures requested	N	N
[mm] SIM defocus	0	0.001444936568705701	[s] Primary exposure time	0.000000	0.8
[mm] SIM translation stage pos	-190.132523	-190.1425803651734			
[mm] SIM translation stage offset	0	0.01005778216563158			
[s] Observation start time (MET)	553541760.184000	553540414.77143			
Observation start date	2015-07-17T17:34:52	2015-07-17T17:13:34			
[s] Observation end time (MET)	553551760.184000	553552197.1471			
Observation end date	2015-07-17T20:21:32	2015-07-17T20:29:57			
Read mode	TIMED	TIMED			

## 2.3 Aspect



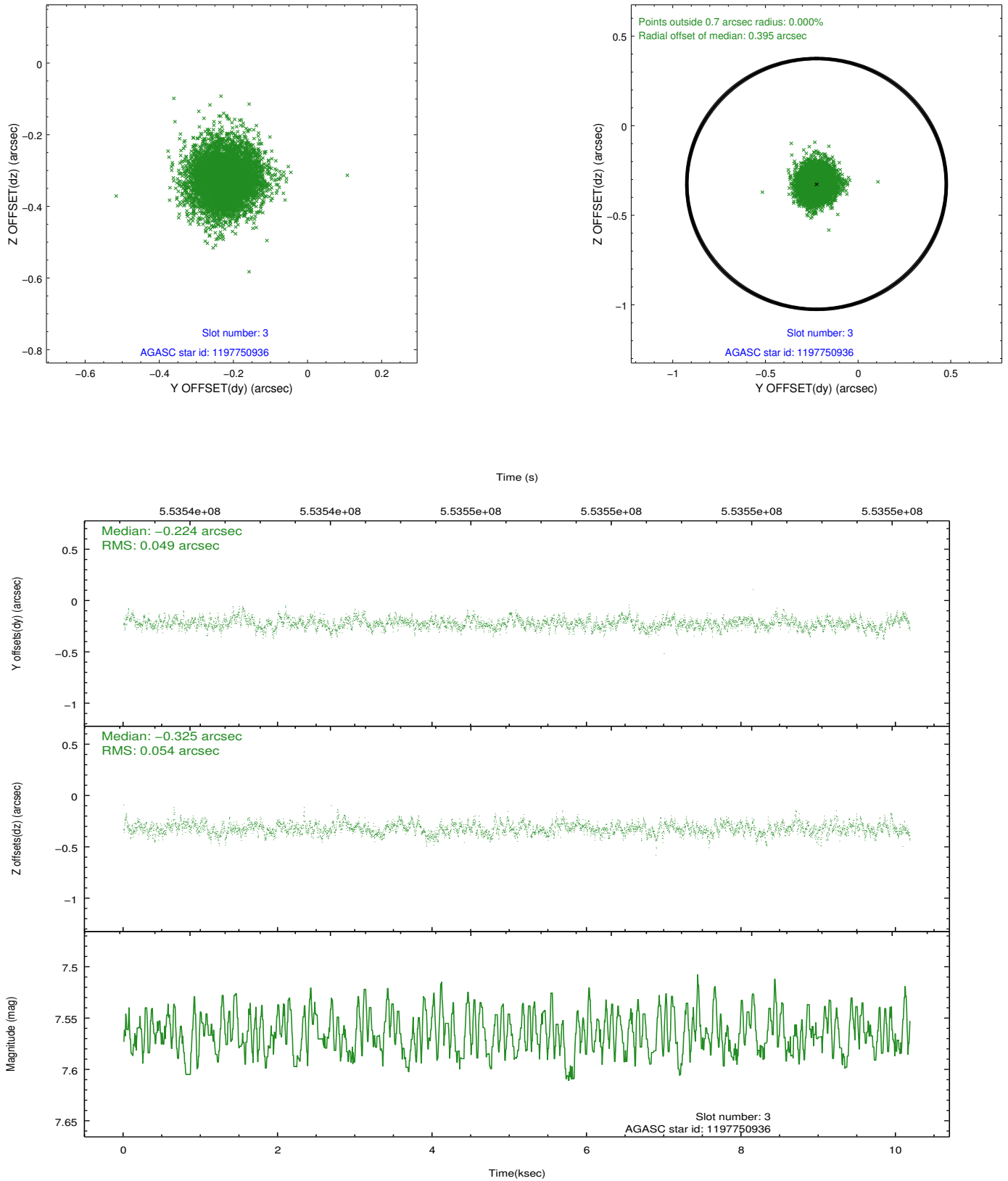


### Slot Statistics

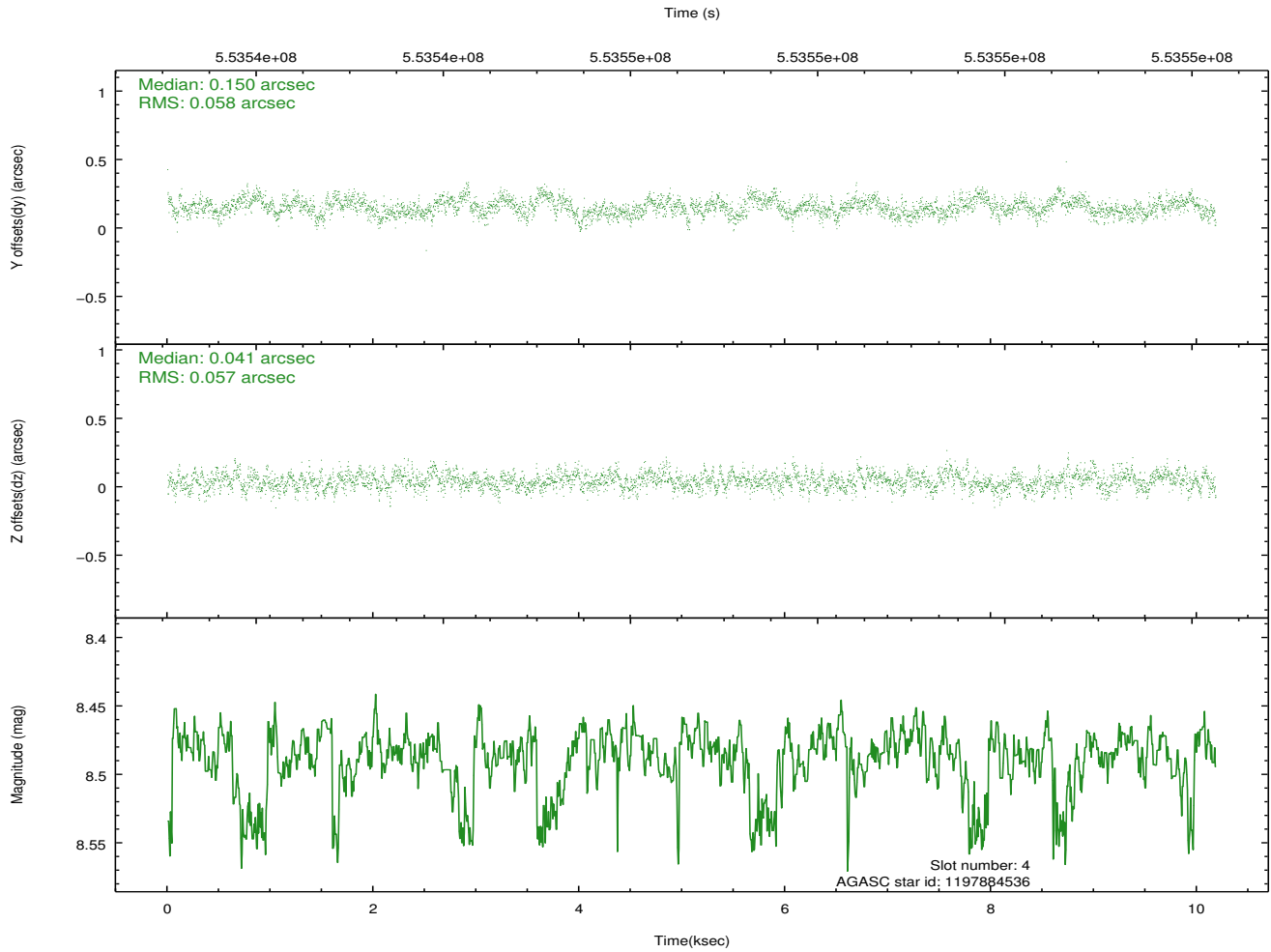
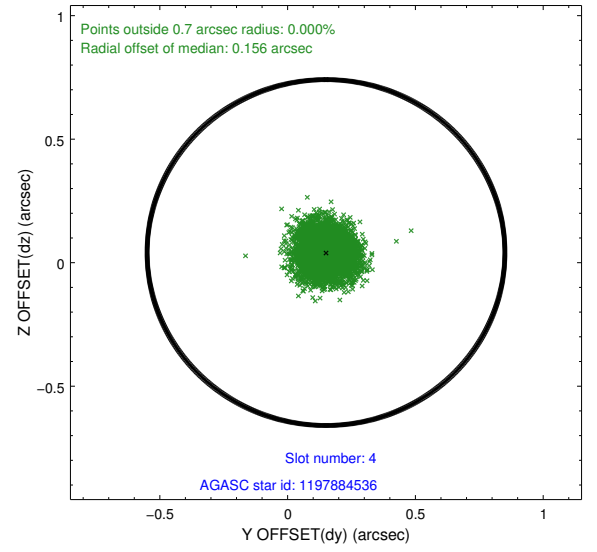
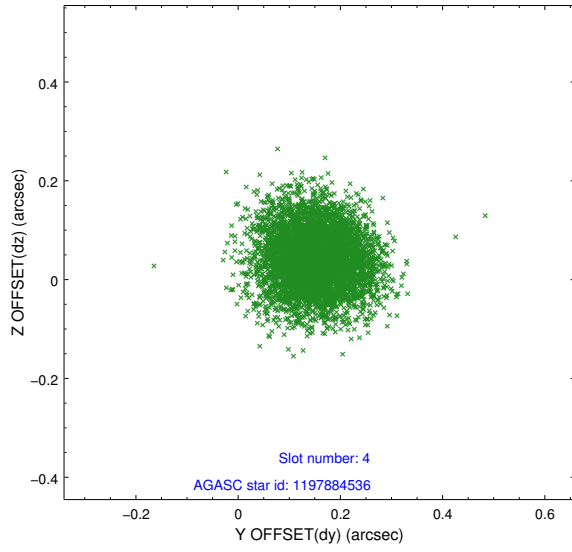
slot	status	used	id	mag	n_pts	med_dy	med_dz	dr1	dr2	ra	dec	mean_y	mean_z
0	FID		ACIS-S-1	7.18	2484	0.166	-0.123	0.007	0.012	0.000000	0.000000	925.68	-1734.10
1	FID		ACIS-S-5	7.21	2484	-0.258	0.099	0.007	0.014	0.000000	0.000000	-1823.50	163.07
2	FID		ACIS-S-6	7.31	2484	0.071	0.036	0.007	0.012	0.000000	0.000000	390.51	807.61
3	GUIDE	used	1197750936	7.57	4968	-0.224	-0.325	0.077	0.125	15.387940	-71.549550	1978.50	260.48
4	GUIDE	used	1197884536	8.49	4967	0.150	0.041	0.087	0.139	17.160729	-71.835289	431.78	-1376.09
5	GUIDE	used	1197885104	9.33	4962	0.175	0.340	0.143	0.227	17.845067	-72.189368	-1013.24	-1719.81
6	GUIDE	used	1197885328	7.22	4968	-0.079	0.099	0.083	0.137	16.283090	-71.733943	1063.97	-536.70
7	GUIDE	used	1198189696	7.35	4966	-0.025	-0.153	0.080	0.127	15.223750	-72.697522	-1958.62	1527.25

## 2.4 Star Slots

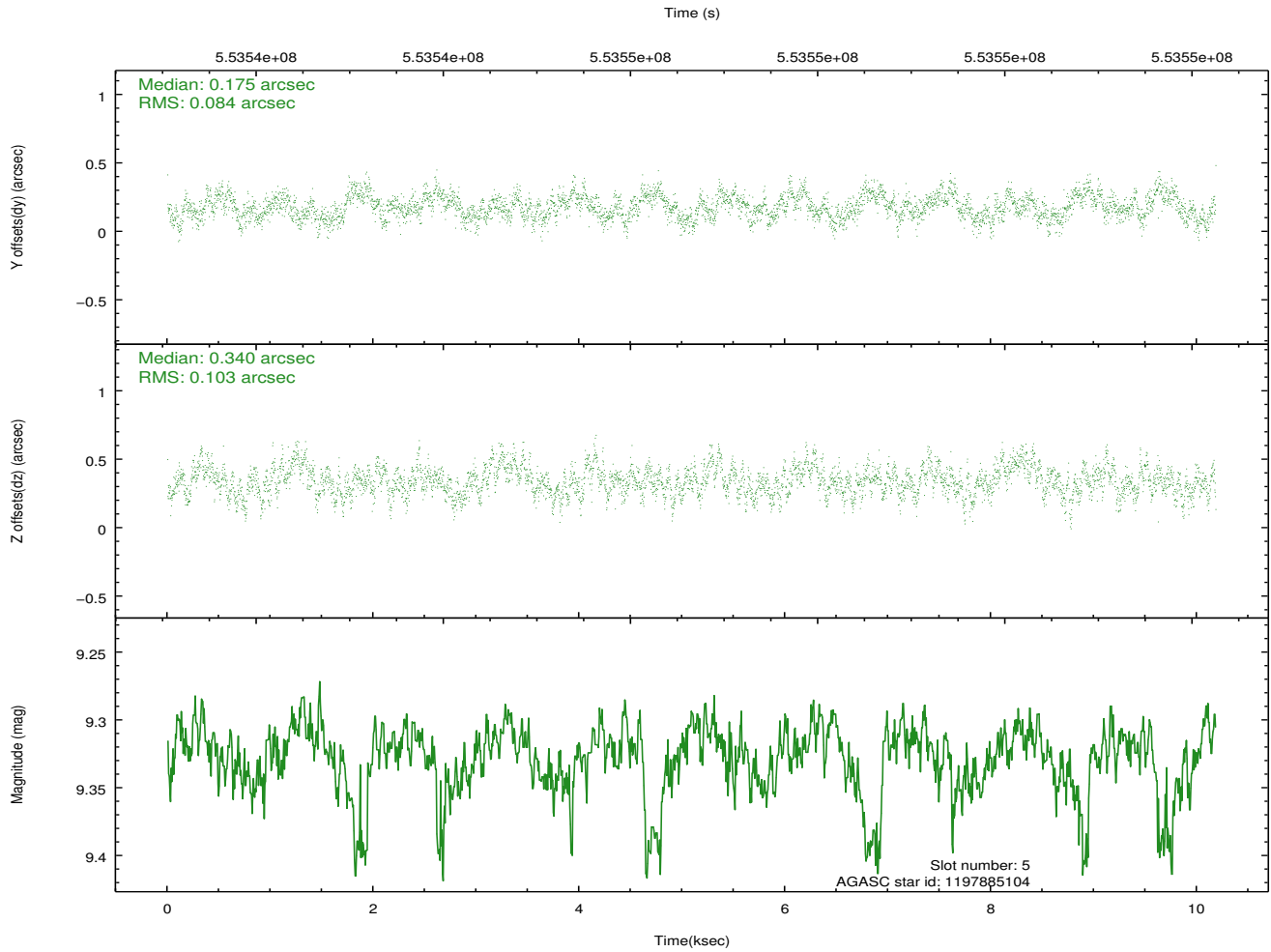
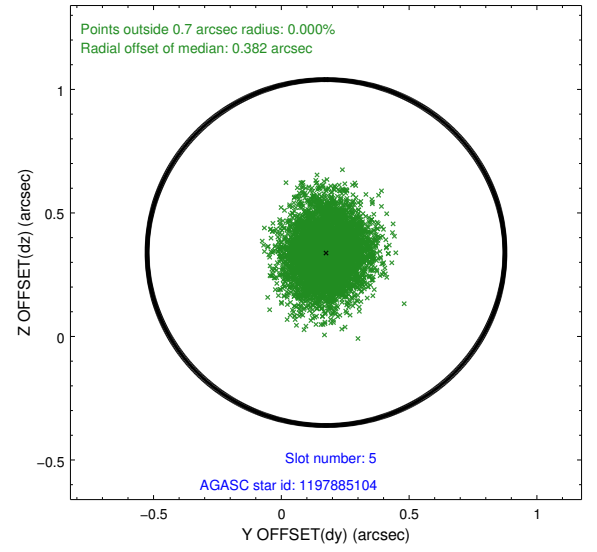
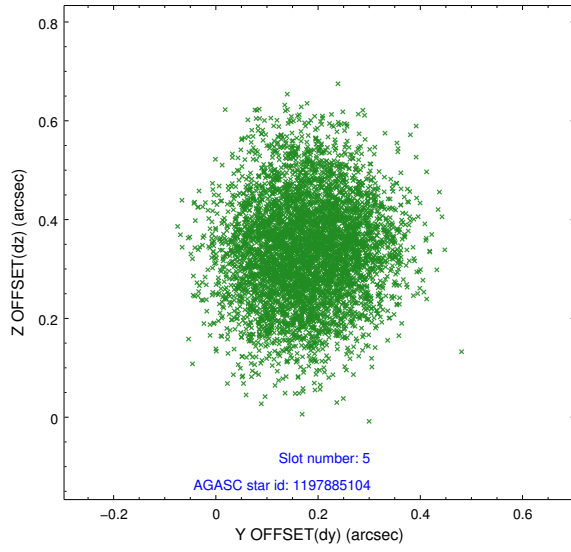
### 2.4.1 Slot 3



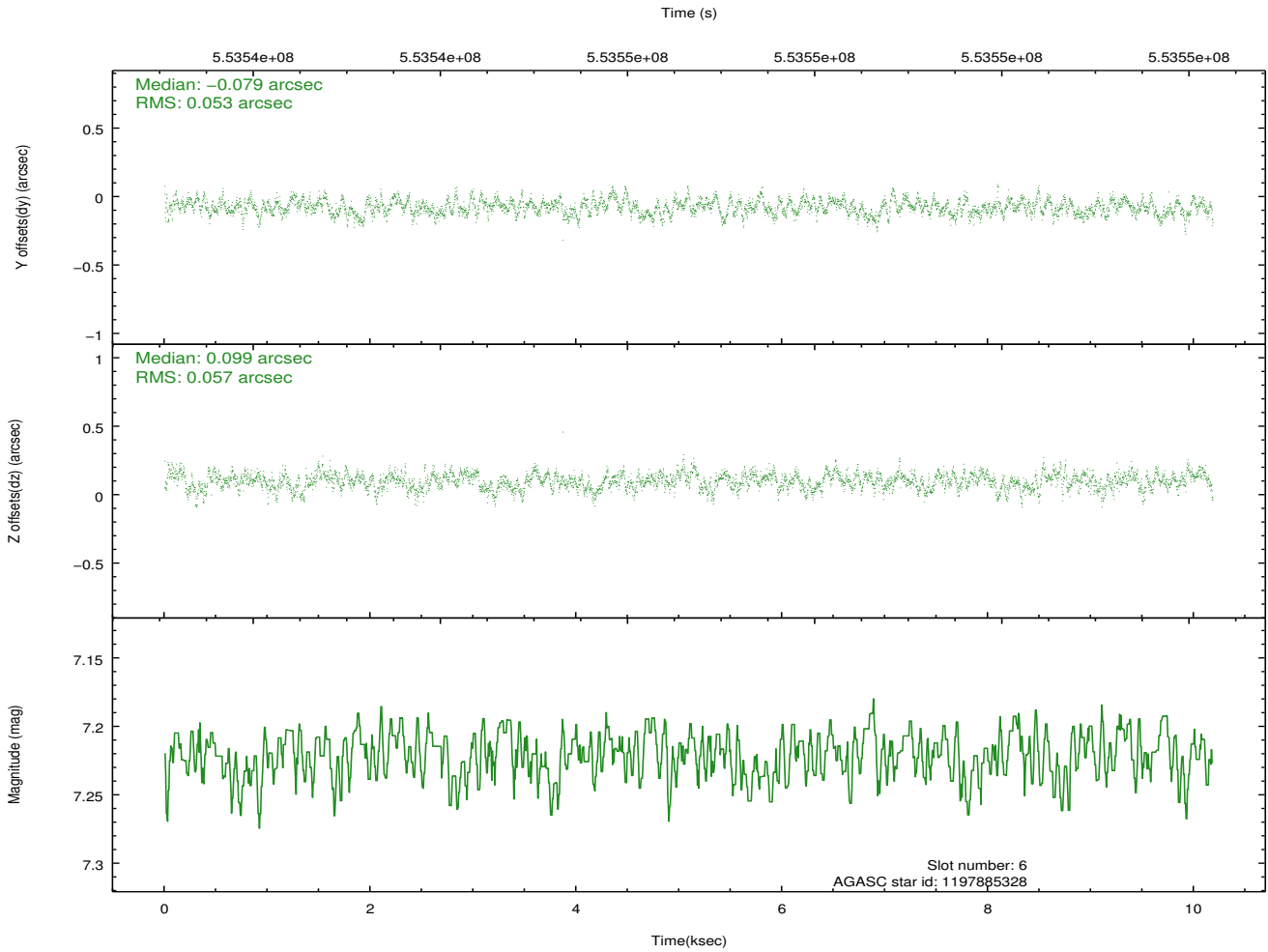
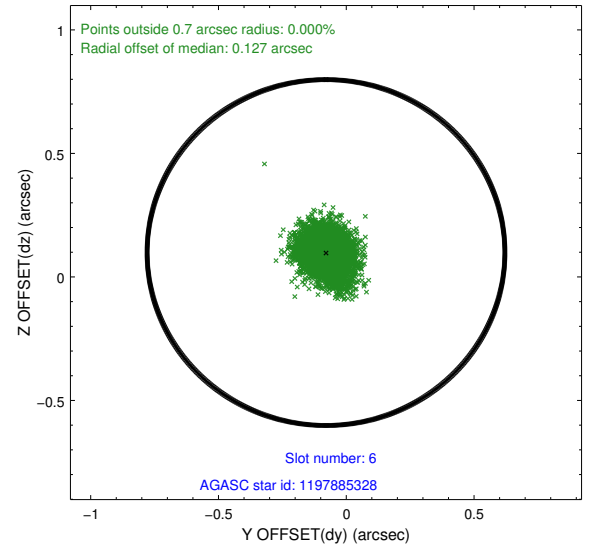
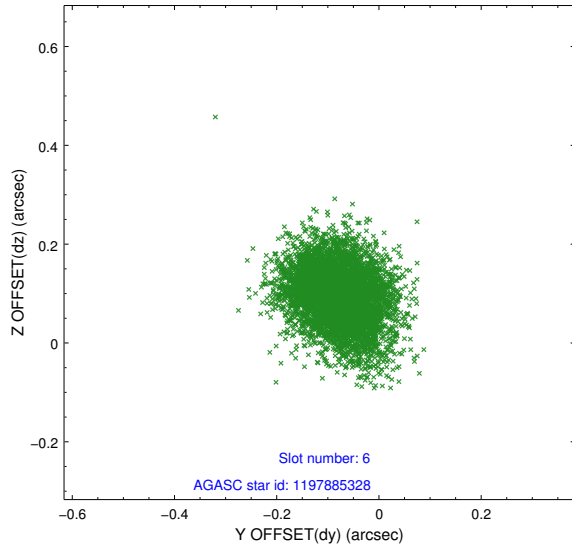
## 2.4.2 Slot 4



### 2.4.3 Slot 5

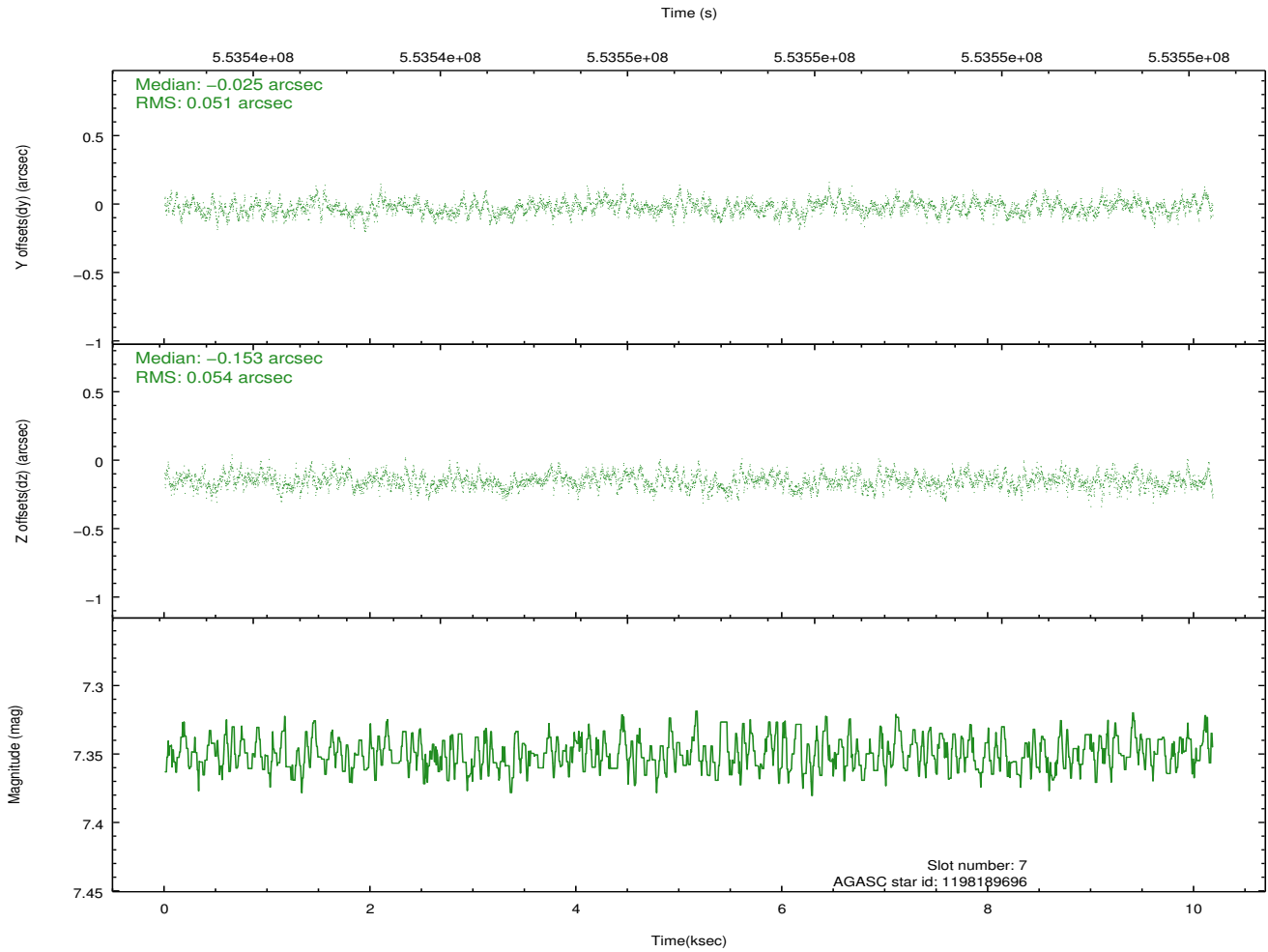
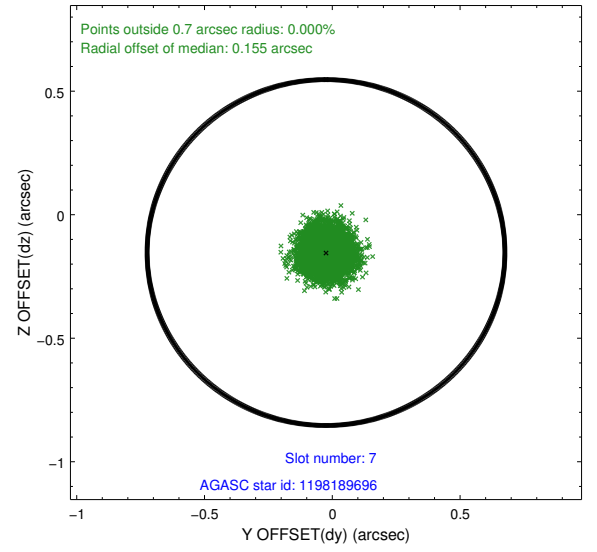
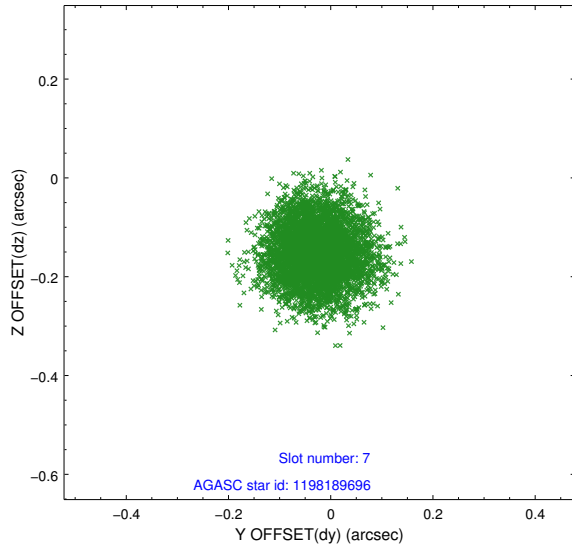


## 2.4.4 Slot 6



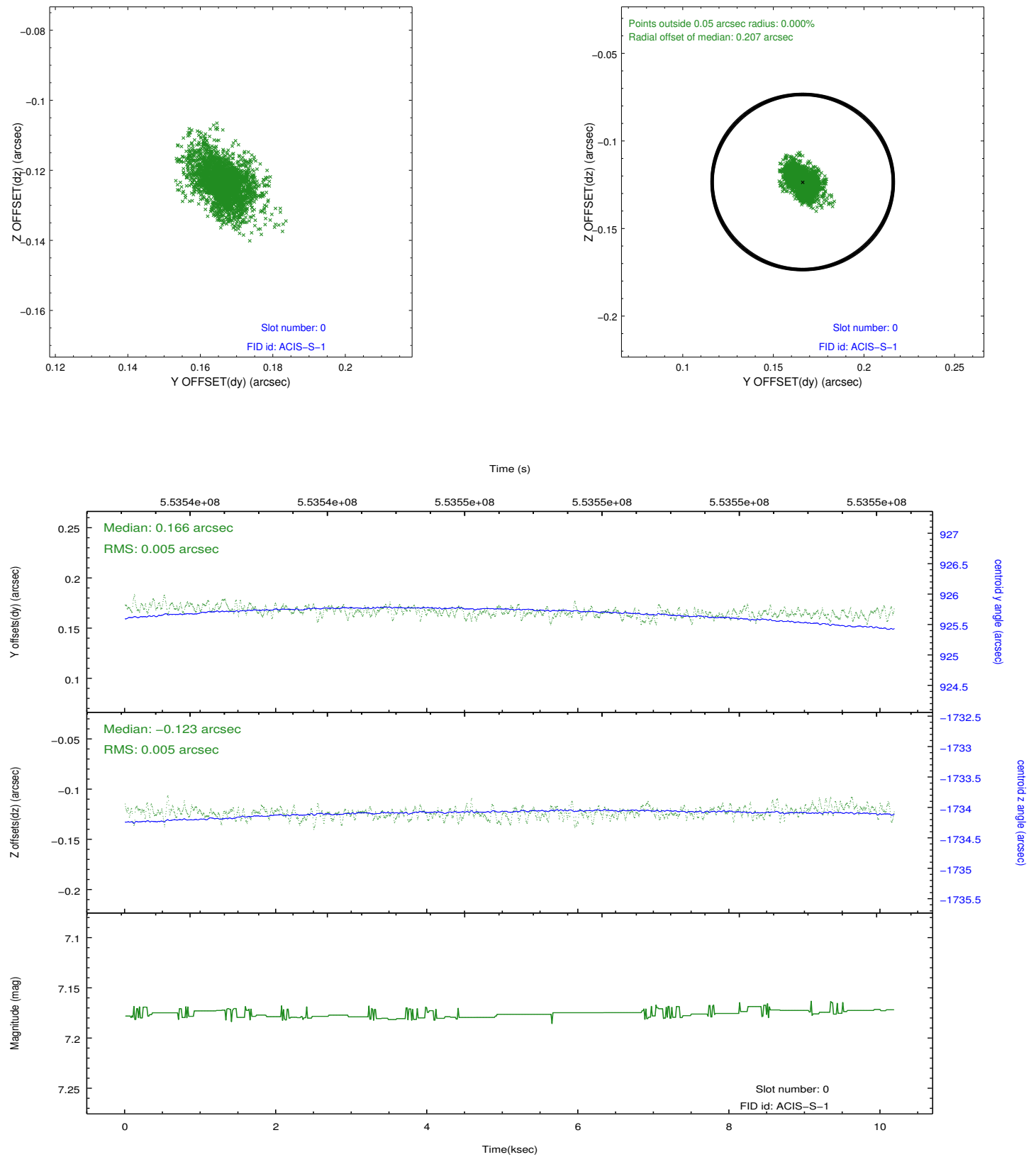


## 2.4.5 Slot 7

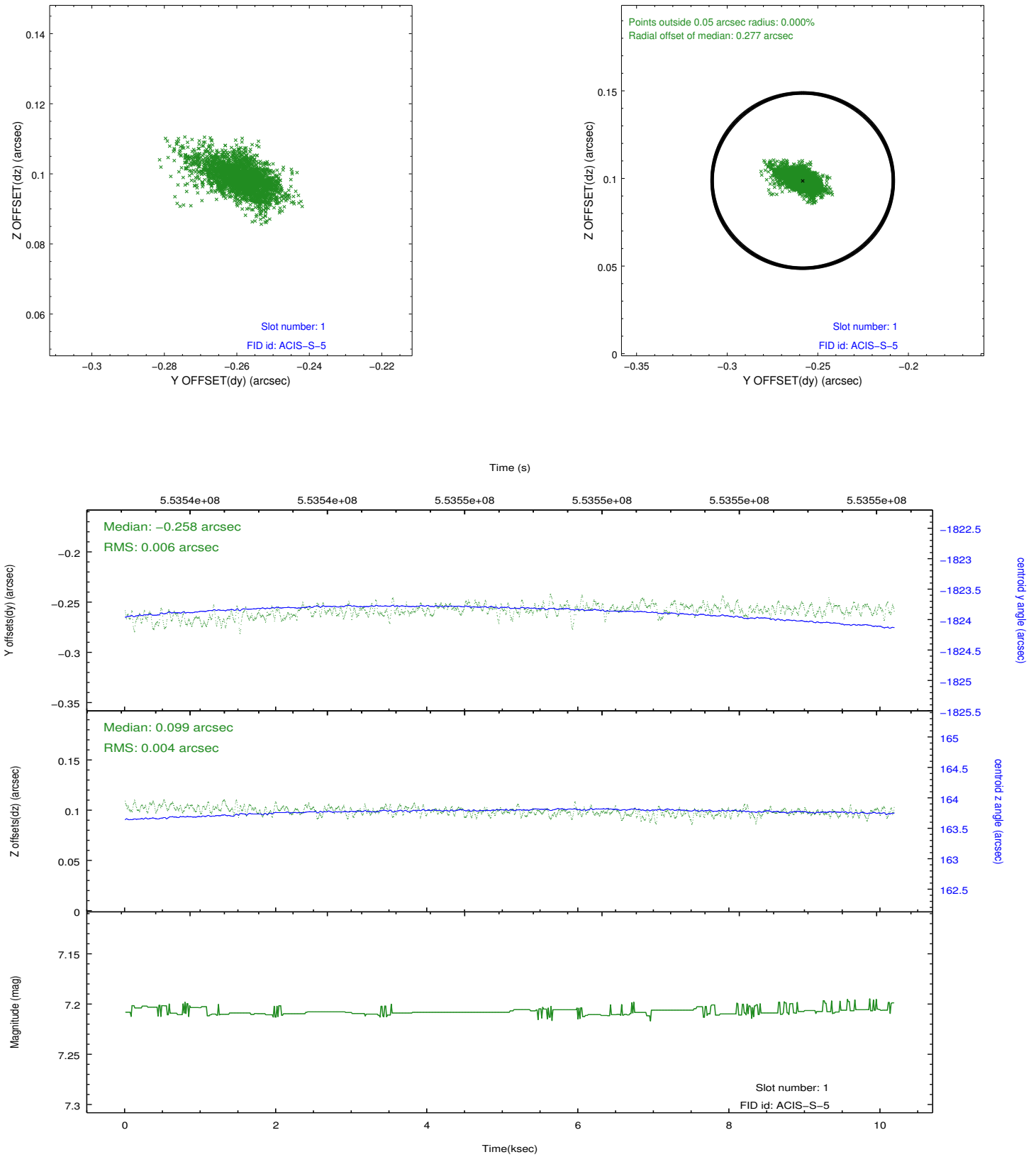


## 2.5 FID Slots

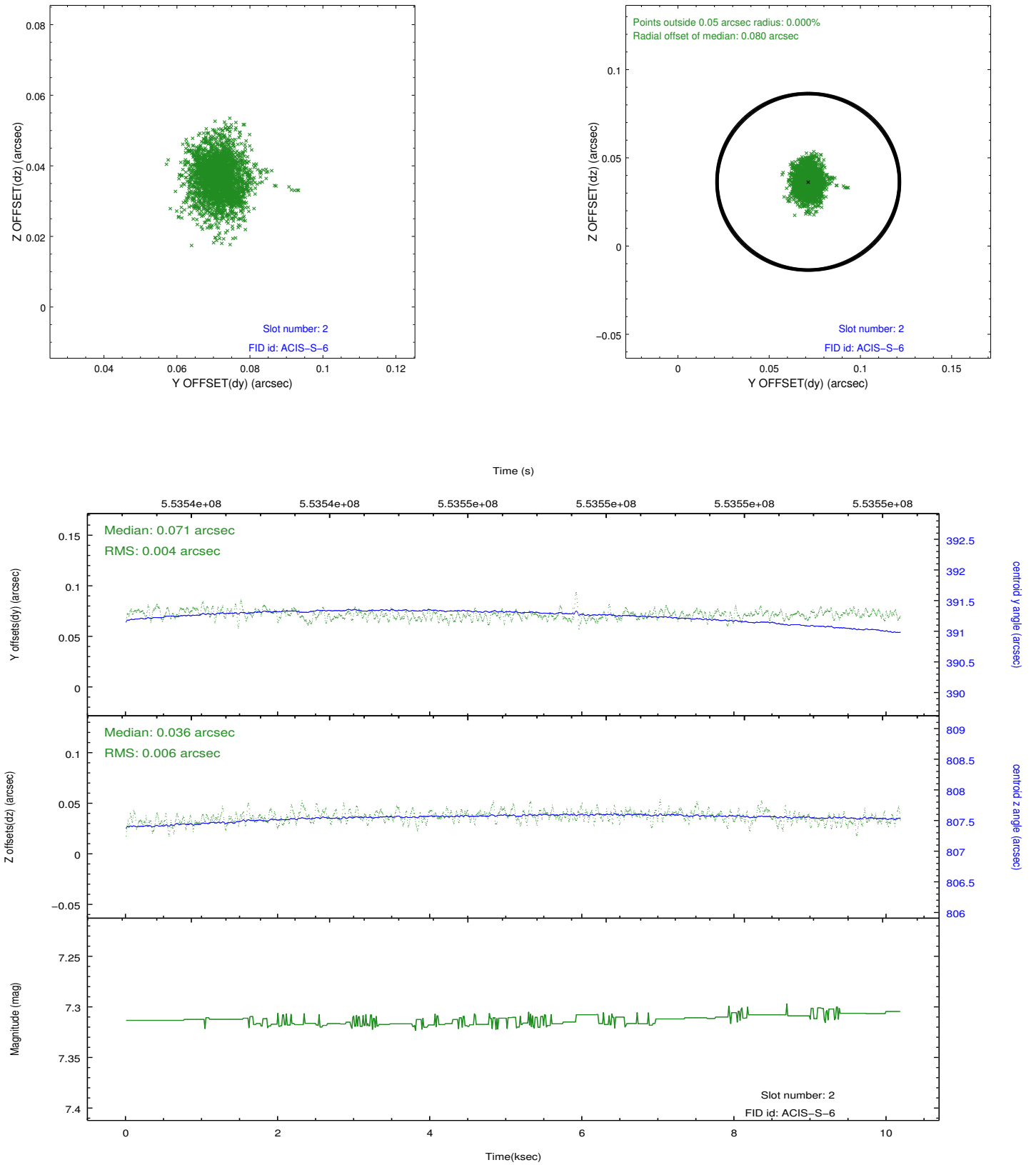
### 2.5.1 Slot 0



## 2.5.2 Slot 1



### 2.5.3 Slot 2



## A Summary

### A.1 Status

V&V Scientist	Beth Sundheim
V&V Date (YYYY-MM-DD)	2015.07.18
V&V Edition	1
V&V Disposition and Status	OK
V&V Charge Time	10.059999400377

### A.2 Comments