

V&V Reference Report

L2 ASCDS Version : 10.3.3

Observation 17398 - L2 Version 1
Chandra X-Ray Center

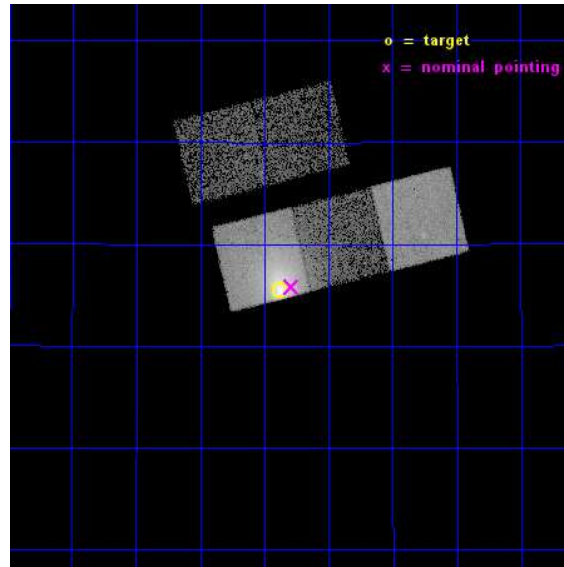
L2 Processing Date : Apr 11 2015

Contents

1	Front	2
2	OBI	3
2.1	OBI	3
2.1.1	Images	3
2.1.2	Bias	3
2.1.3	Parameters	4
2.1.4	Events	4
2.2	Compared Parameters	5
2.3	Aspect	6
2.4	Star Slots	9
2.4.1	Slot 3	9
2.4.2	Slot 4	10
2.4.3	Slot 5	11
2.4.4	Slot 6	12
2.4.5	Slot 7	13
2.5	FID Slots	14
2.5.1	Slot 0	14
2.5.2	Slot 1	15
2.5.3	Slot 2	16
A	Summary	17
A.1	Status	17
A.2	Comments	17

1 Front

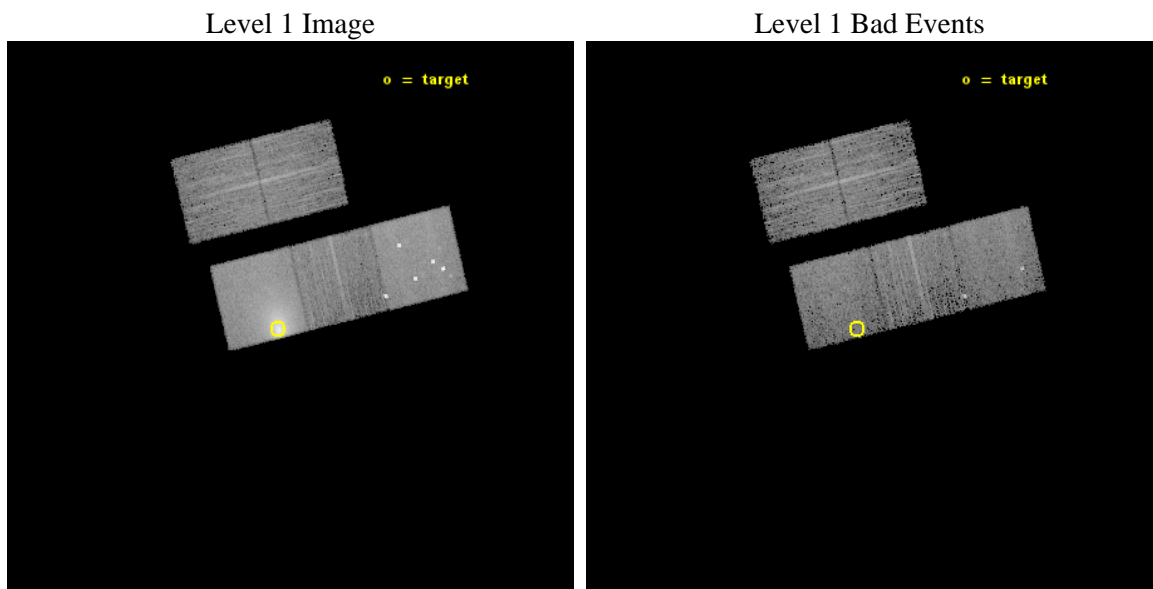
seq_num	890098	Sequence number
obs_id	17398	Observation id
title	AO-16 Calibration Observations of A1795	Proposal title
observer	Dr. CXC Calibration	Principal investigator
object	A1795	Source name
dtcycle	0	
cycle	P	events from which exps? Prim/Second/Both
ra_targ	207.219583	Observer's specified target RA [deg]
dec_targ	26.590833	Observer's specified target Dec [deg]
ra_nom	207.19737791022	Nominal RA [deg]
dec_nom	26.597267915324	Nominal Dec [deg]
roll_nom	166.50440383403	Nominal Roll [deg]
revision	1	Processing version of data
ontime	10050.200077415	Sum of GTIs [s]
livetime	9918.8868145534	Livetime [s]
ontime2	10050.200077415	Sum of GTIs [s]
ontime3	10050.200077415	Sum of GTIs [s]
ontime5	10050.200077415	Sum of GTIs [s]
ontime6	10050.200077415	Sum of GTIs [s]
ontime7	10050.200077415	Sum of GTIs [s]
l2events	140823	Number of level 2 events



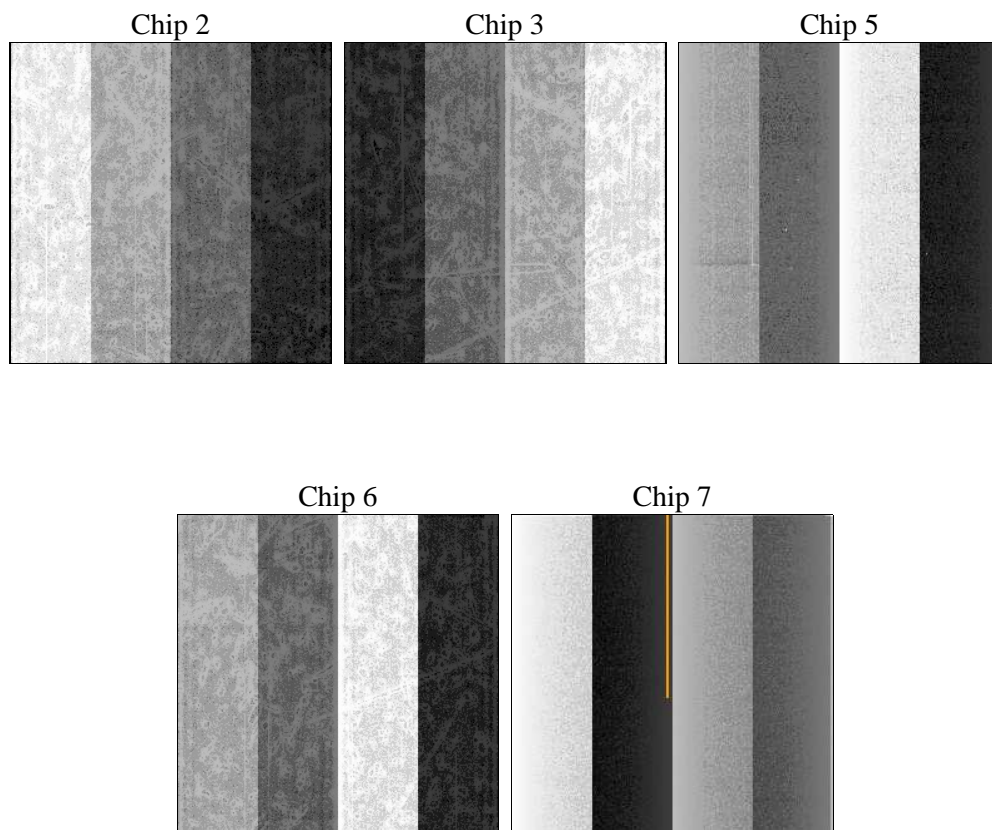
2 OBI

2.1 OBI

2.1.1 Images



2.1.2 Bias



2.1.3 Parameters

obi_num	0	Obi number	sched_exp_time	9988.761000	[s] Scheduled observation exposure time
ascdsver	10.3.3	Processing system revision	ontime	10050.200077415	Sum of GTIs [s]
caldsver	4.6.7	 	ontime2	10050.200077415	Sum of GTIs [s]
date	2015-04-11T16:17:03	Date and time of file creation	ontime3	10050.200077415	Sum of GTIs [s]
revision	1	Processing version of data	ontime5	10050.200077415	Sum of GTIs [s]
			ontime6	10050.200077415	Sum of GTIs [s]
			ontime7	10050.200077415	Sum of GTIs [s]
			l1events	360416	Number of level 1 events

2.1.4 Events

	ccd 2	ccd 3	ccd 5	ccd 6	ccd 7
level 1 events	46367	45707	91402	48657	128283
rejected events	41198	40459	41613	39743	37931
rejected %	88%	88%	45%	81%	29%

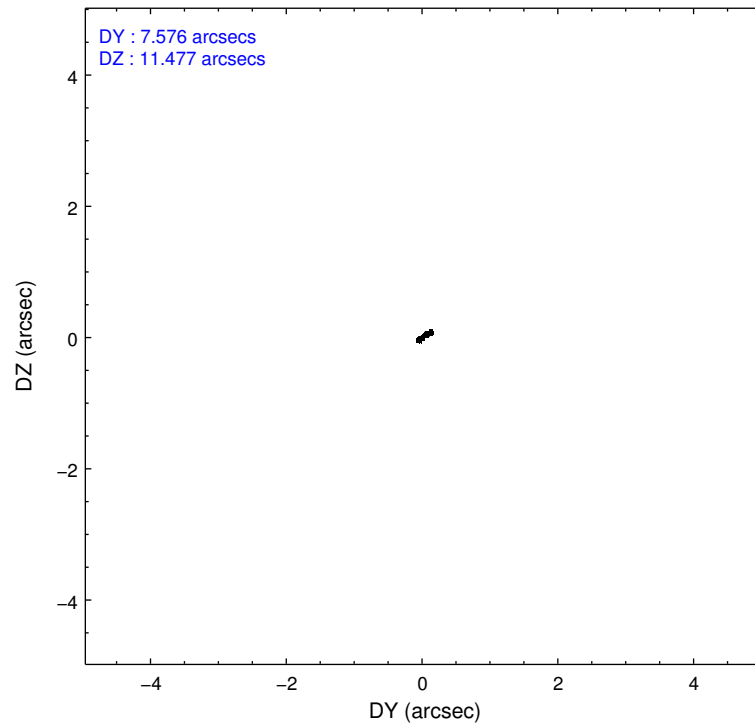
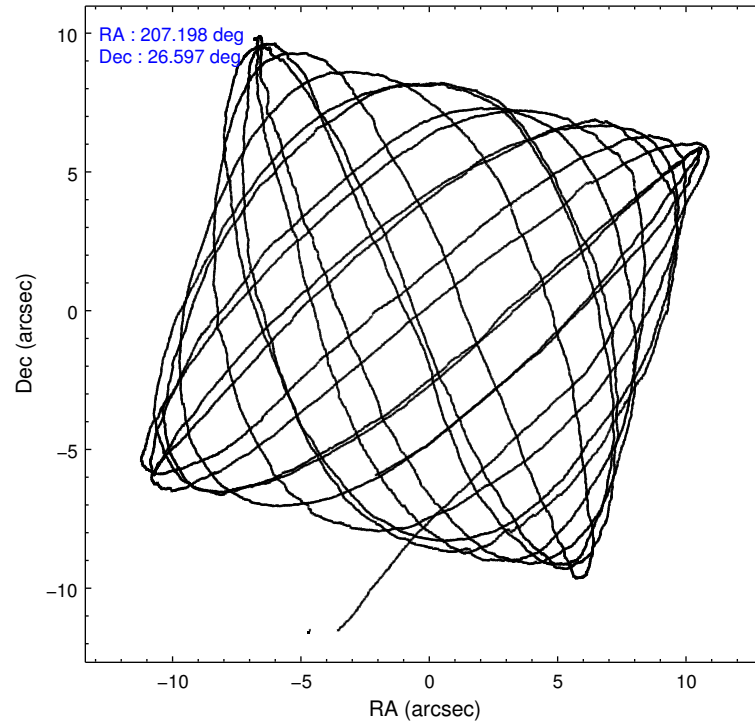
	ccd 2	ccd 3	ccd 5	ccd 6	ccd 7
grade 0 events	1882	1987	12509	4353	18869
	4%	4%	13%	8%	14%
grade 1 events	22	25	1095	41	83
	0%	0%	1%	0%	0%
grade 2 events	1171	1102	13574	1735	22749
	2%	2%	14%	3%	17%
grade 3 events	505	526	1533	653	9283
	1%	1%	1%	1%	7%
grade 4 events	545	530	1385	644	9013
	1%	1%	1%	1%	7%
grade 5 events	1975	2265	5317	2208	6368
	4%	4%	5%	4%	4%
grade 6 events	1070	1103	20804	1532	30459
	2%	2%	22%	3%	23%
grade 7 events	39197	38169	35185	37491	31459
	84%	83%	38%	77%	24%

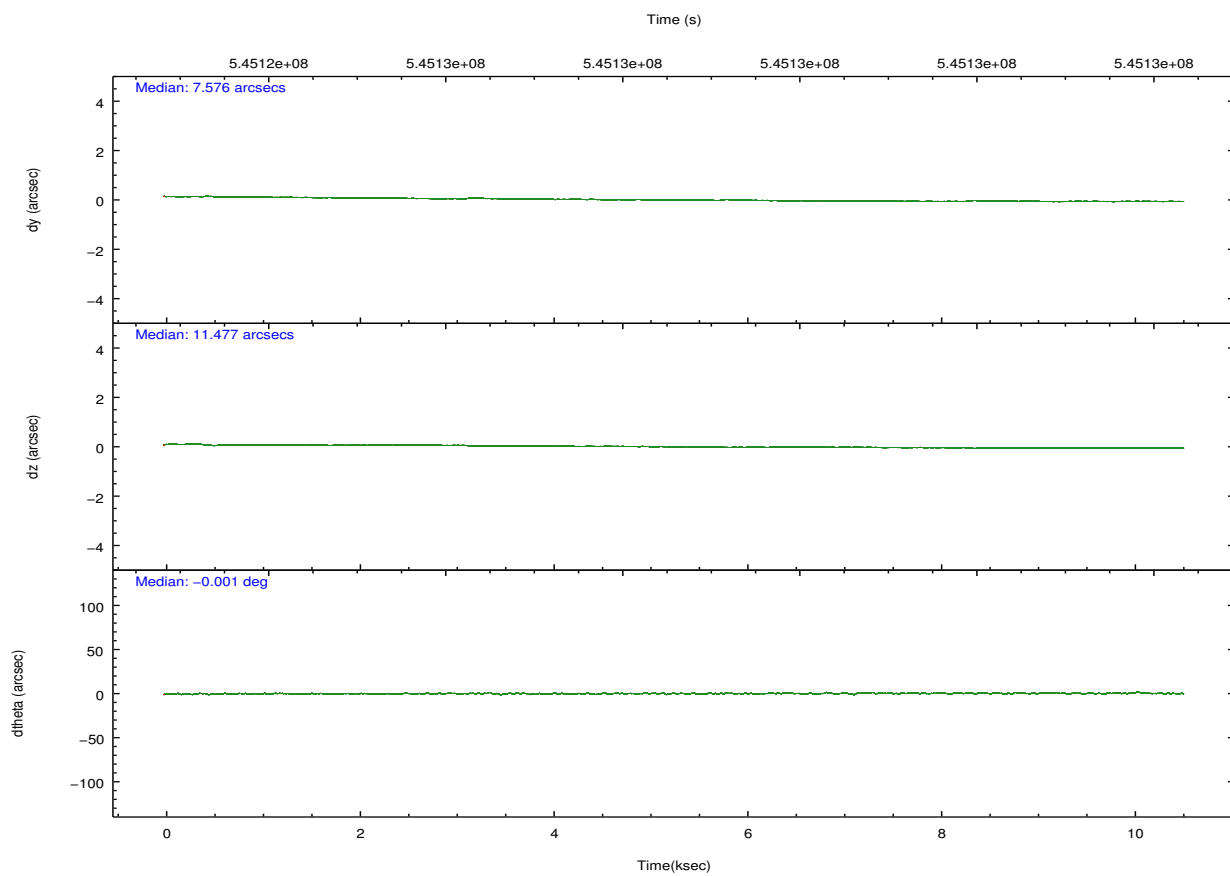
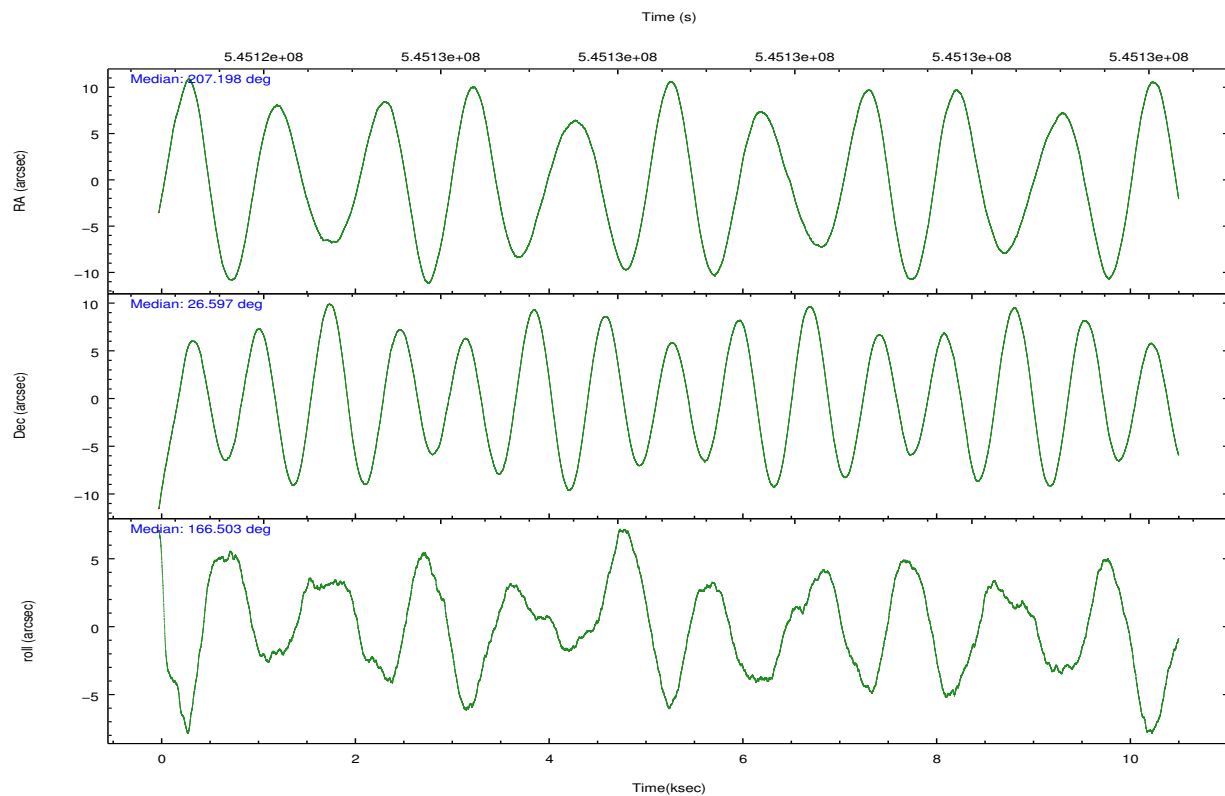
2.2 Compared Parameters

Parameter	Planned	Actual
Instrument	ACIS	ACIS
Detector	ACIS-23567	ACIS-23567
Grating	NONE	NONE
Data mode	VFAINT	VFAINT
Observation mode	POINTING	POINTING
[deg] Pointing RA	207.226624	207.1973779102155
[deg] Pointing Dec	26.605425	26.59726791532382
[deg] Pointing Roll	166.334668	166.5044038340343
[s] Window start time (MET)	544233667.184000	544233667.184000
[s] Window stop time (MET)	546739267.184000	546739267.184000
[mm] SIM focus pos	-0.684267	-0.6828225247311905
[mm] SIM defocus	0	0.001444936568705701
[mm] SIM translation stage pos	-180.332523	-180.3266934278832
[mm] SIM translation stage offset	-9.800000000000001	-9.805829155124599
[s] Observation start time (MET)	545123839.184000	545122577.1988699
Observation start date	2015-04-11T07:16:12	2015-04-11T06:56:17
[s] Observation end time (MET)	545133827.184000	545134050.53701
Observation end date	2015-04-11T10:02:40	2015-04-11T10:07:30
Read mode	TIMED	TIMED

Parameter	Planned	Actual
Obspar format version number	7	7
Obspar file type	PREDICTED	ACTUAL
Obspar update status	NONE	UPDATED
Number of optional ACIS chips dropped	0	0
On-chip summing requested	N	N
Subarray requested	NONE	NONE
Alternating exposures requested	N	N
[s] Primary exposure time	0.000000	3.1

2.3 Aspect



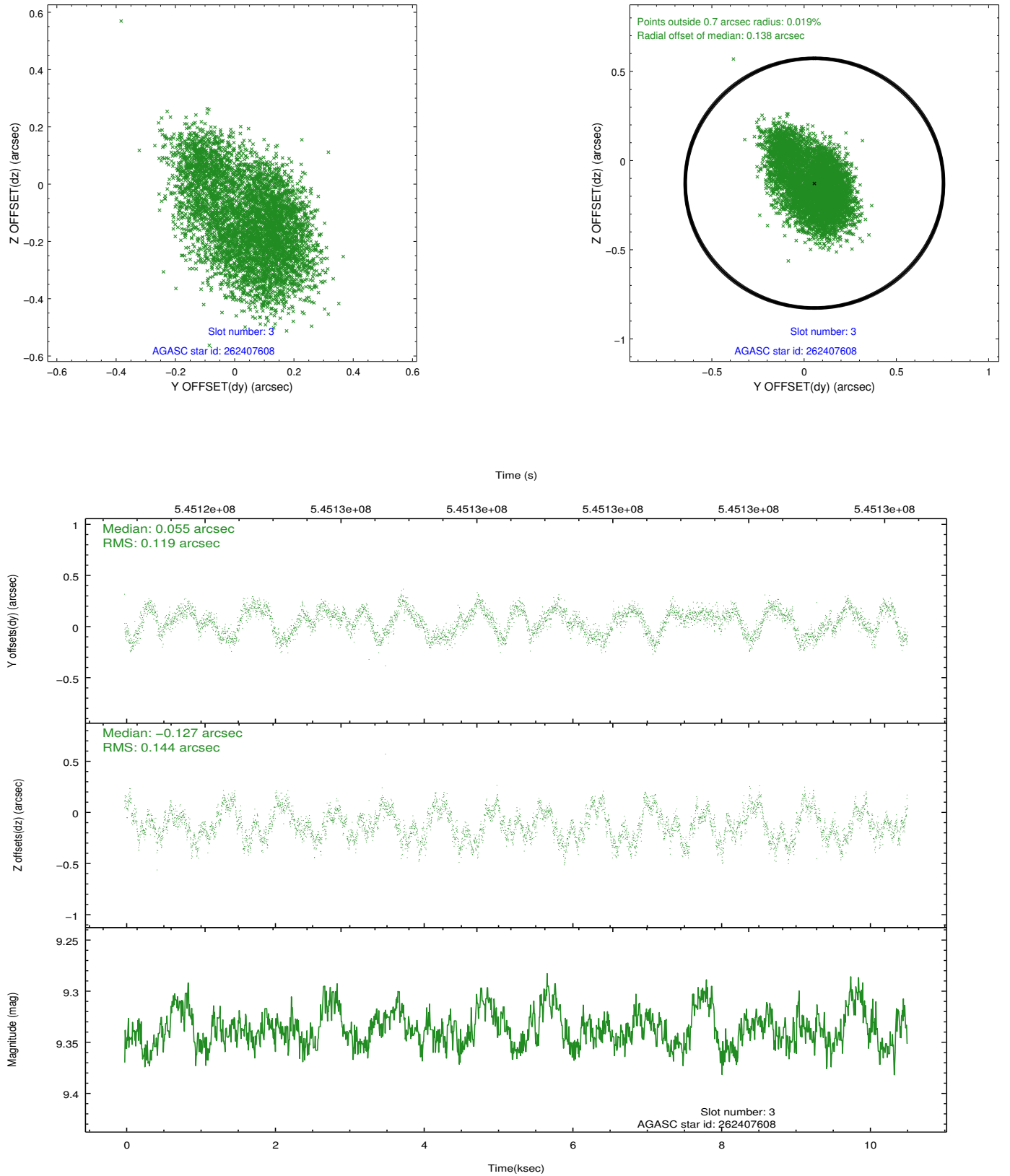


Slot Statistics

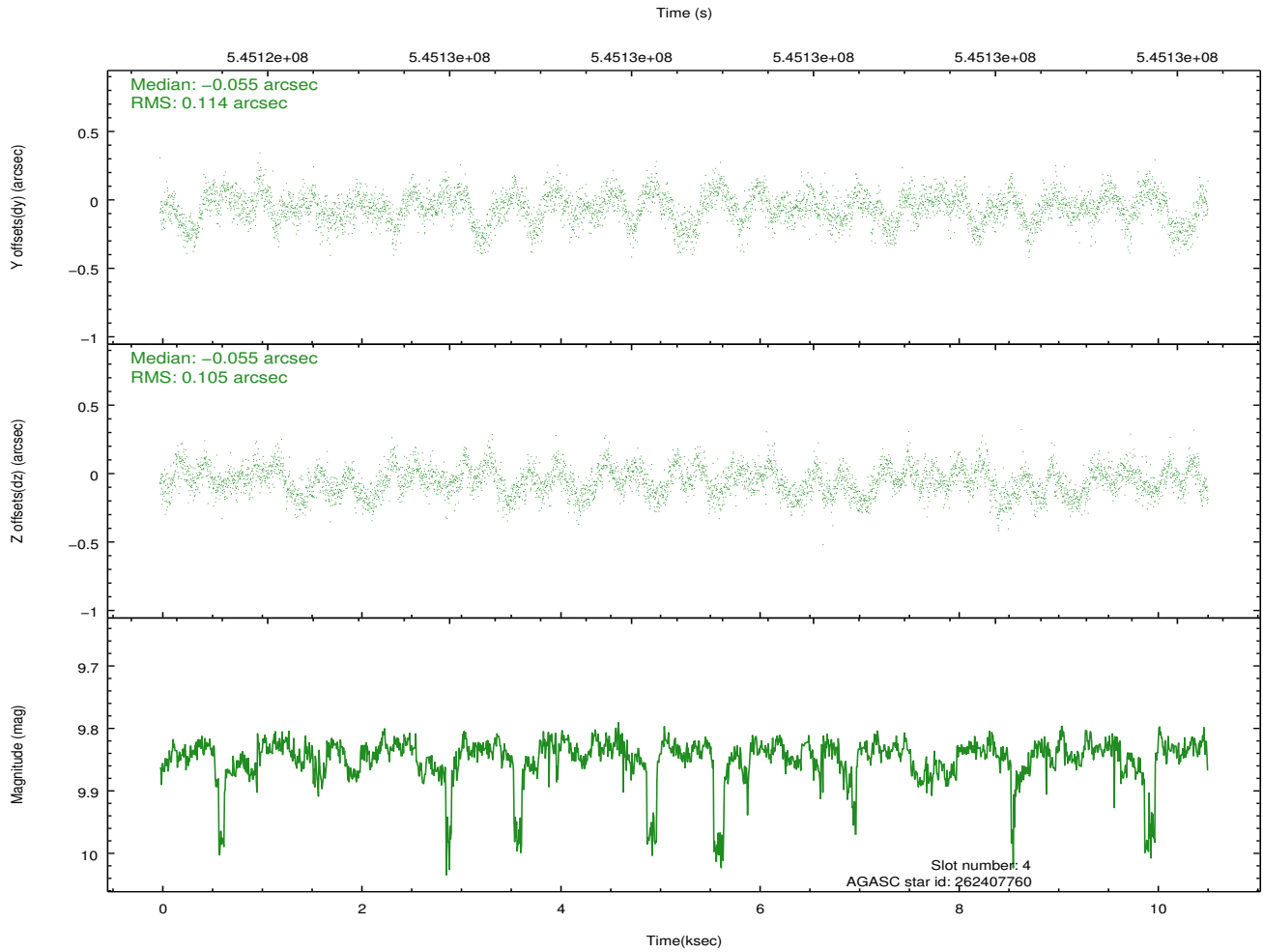
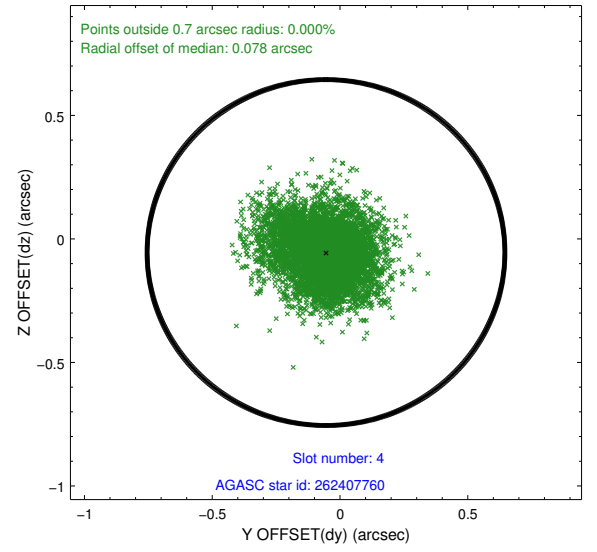
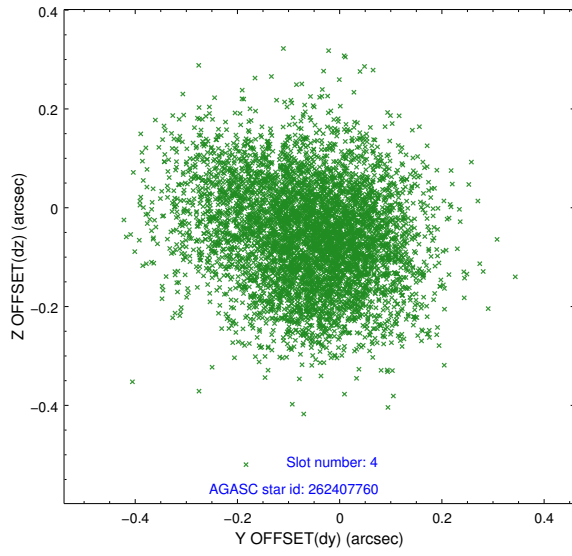
slot	status	used	id	mag	n_pts	med_dy	med_dz	dr1	dr2	ra	dec	mean_y	mean_z
0	FID		ACIS-S-1	7.17	2567	0.210	0.008	0.006	0.011	0.000000	0.000000	936.46	-1930.39
1	FID		ACIS-S-5	7.22	2568	-0.227	0.190	0.006	0.010	0.000000	0.000000	-1812.55	-33.03
2	FID		ACIS-S-6	7.40	2568	-0.005	-0.186	0.007	0.011	0.000000	0.000000	401.46	610.93
3	GUIDE	used	262407608	9.34	5132	0.055	-0.127	0.202	0.313	207.378401	26.435507	-619.42	478.62
4	GUIDE	used	262407760	9.84	5131	-0.055	-0.055	0.165	0.268	206.566773	26.577263	2042.56	595.43
5	GUIDE	used	262408096	9.32	5135	-0.070	-0.097	0.136	0.233	207.011678	26.515421	597.92	478.03
6	GUIDE	used	262408512	7.98	5136	0.050	0.103	0.061	0.101	207.800210	27.128796	-1338.81	-2268.66
7	GUIDE	used	262408936	9.63	5129	0.033	0.162	0.129	0.203	207.154731	26.726554	327.75	-369.11

2.4 Star Slots

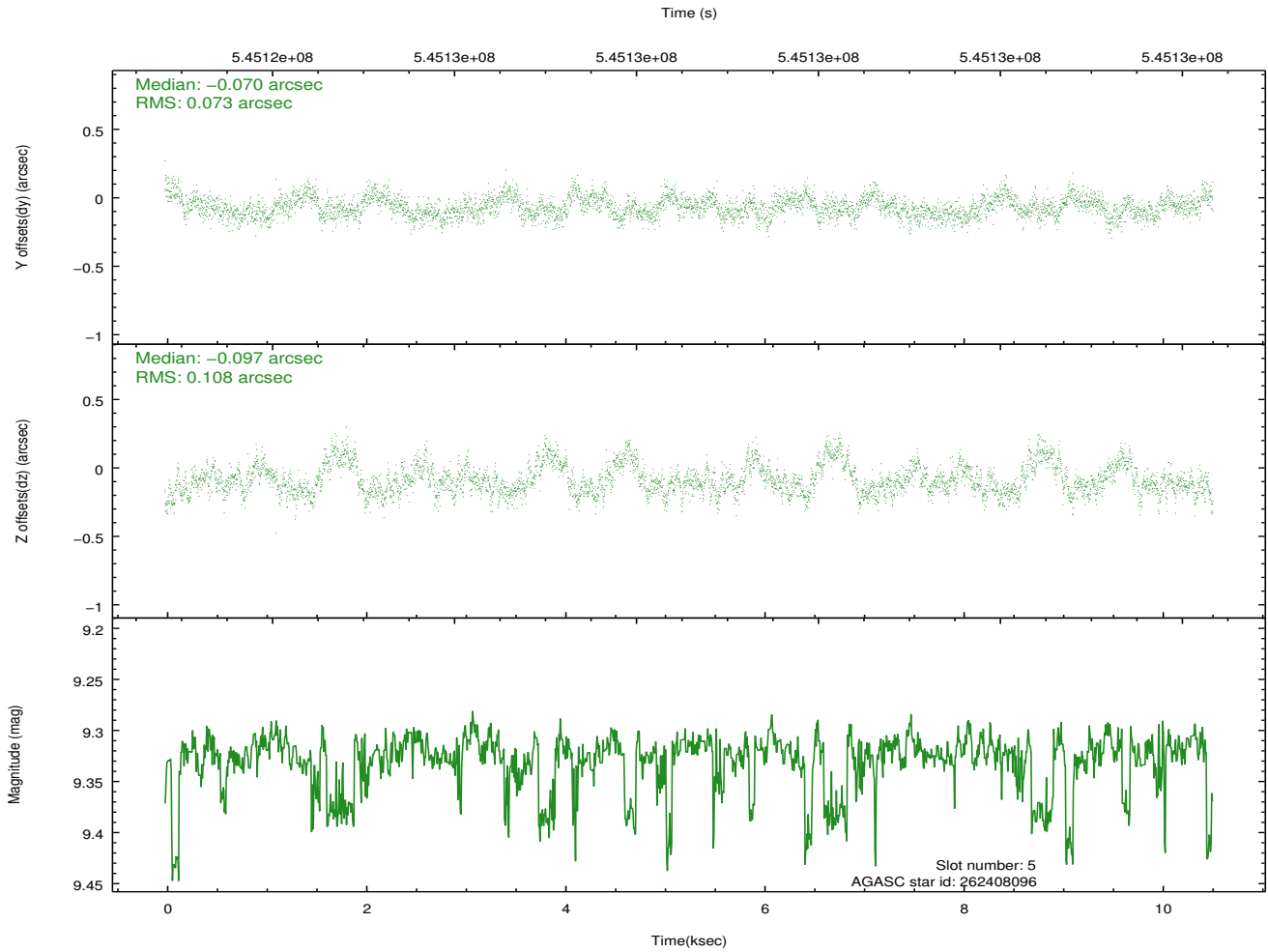
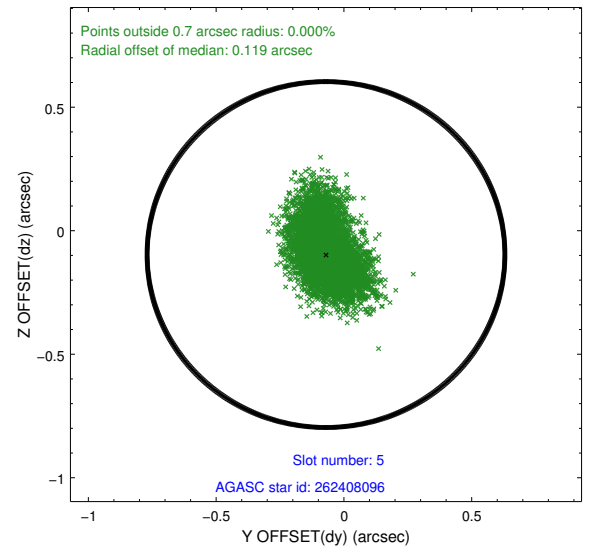
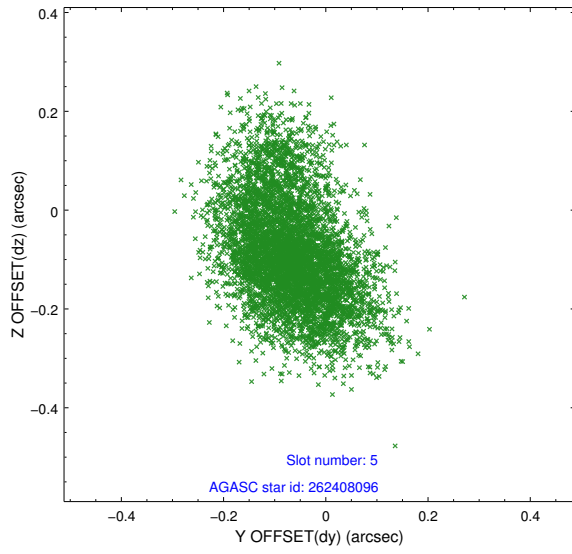
2.4.1 Slot 3



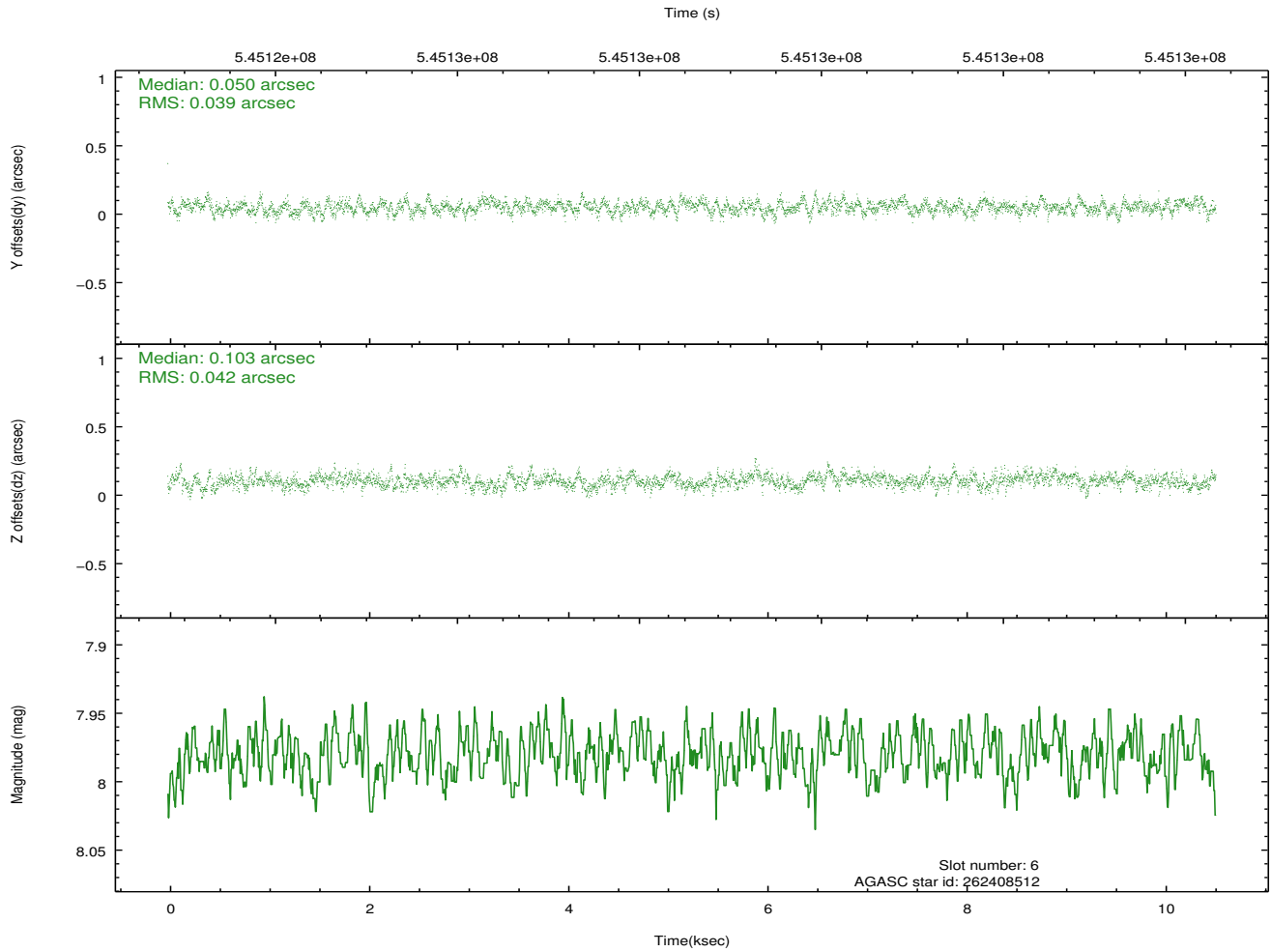
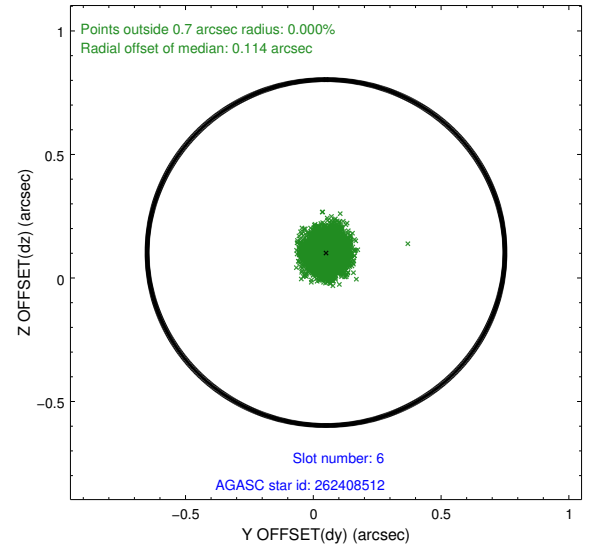
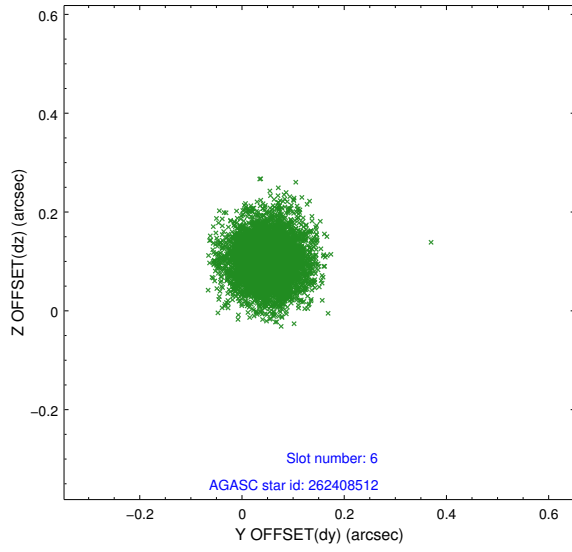
2.4.2 Slot 4



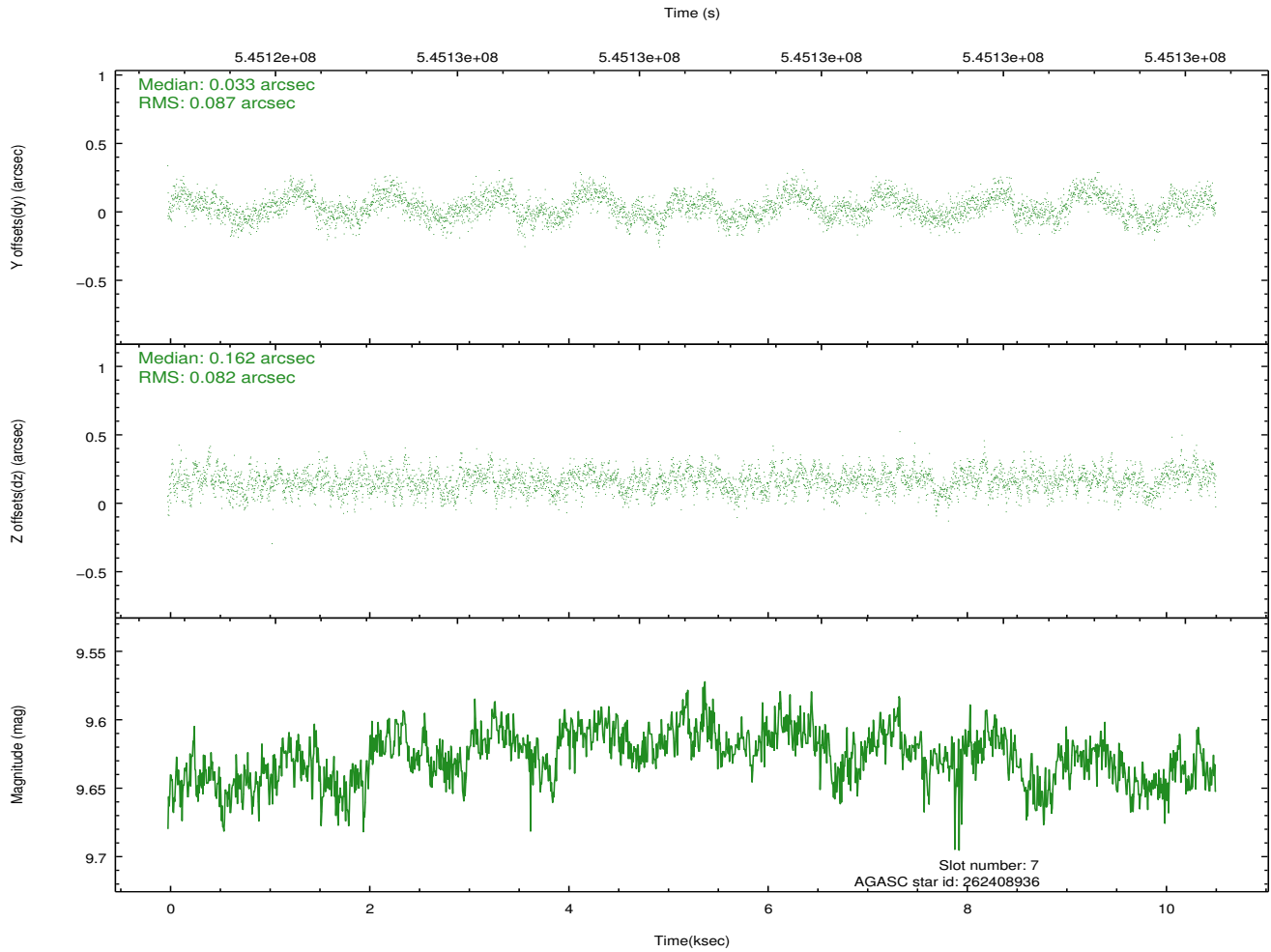
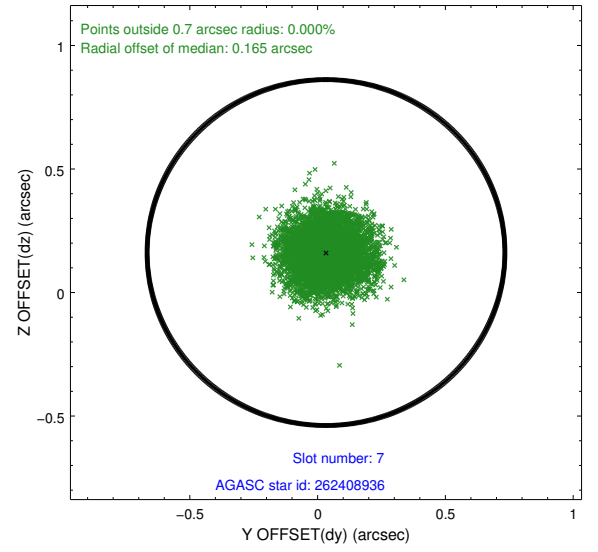
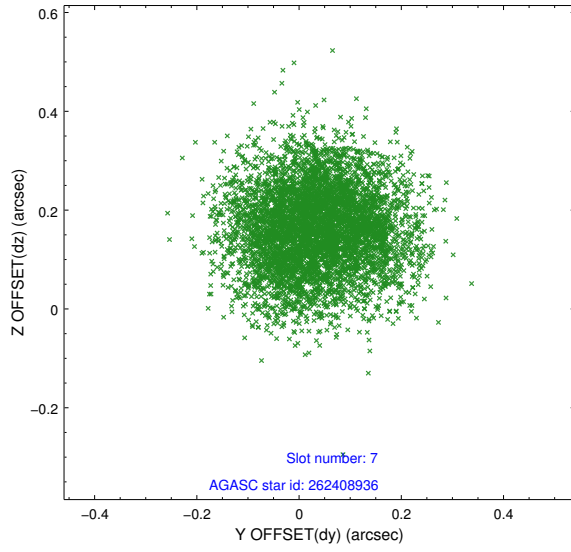
2.4.3 Slot 5



2.4.4 Slot 6

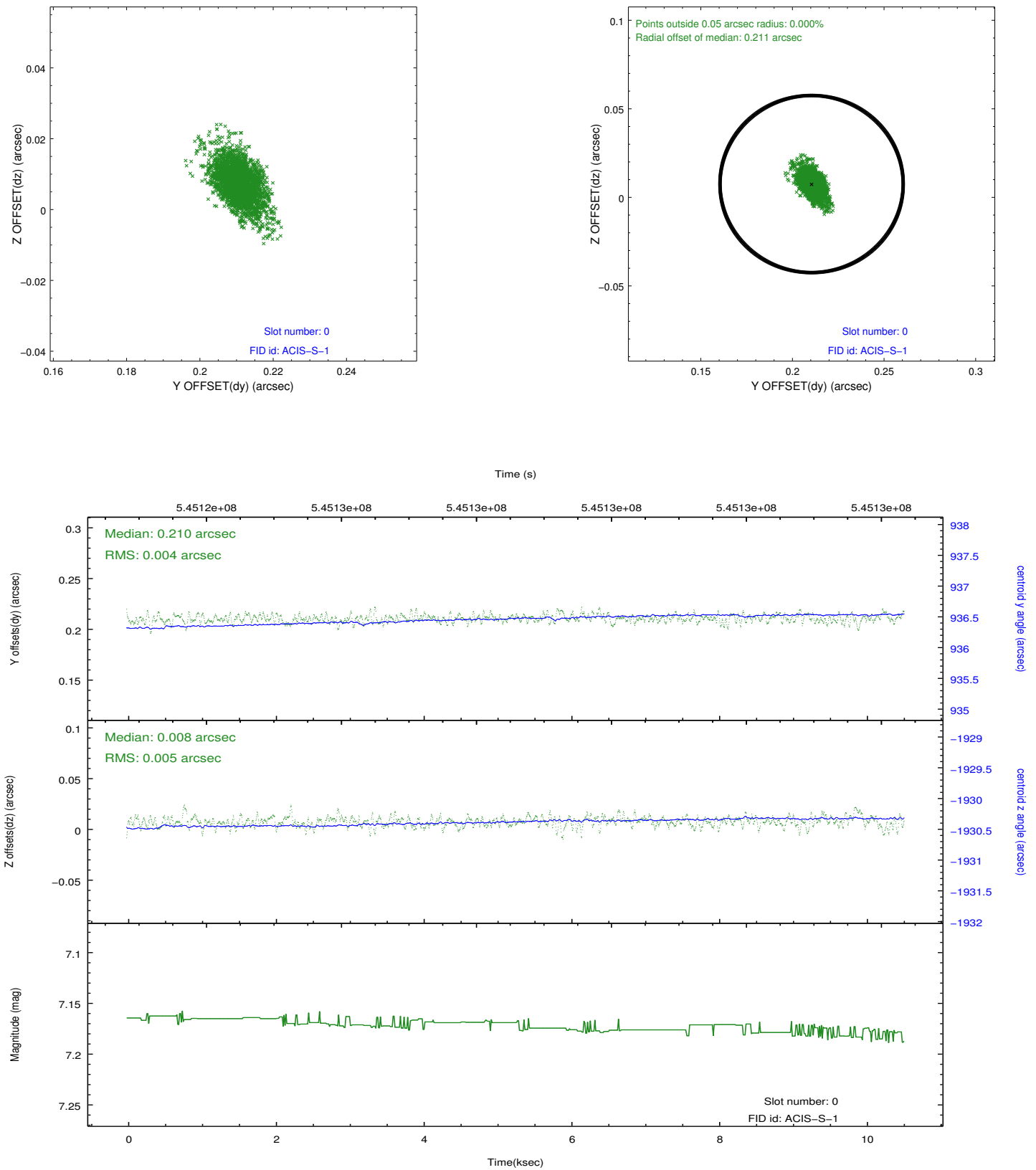


2.4.5 Slot 7

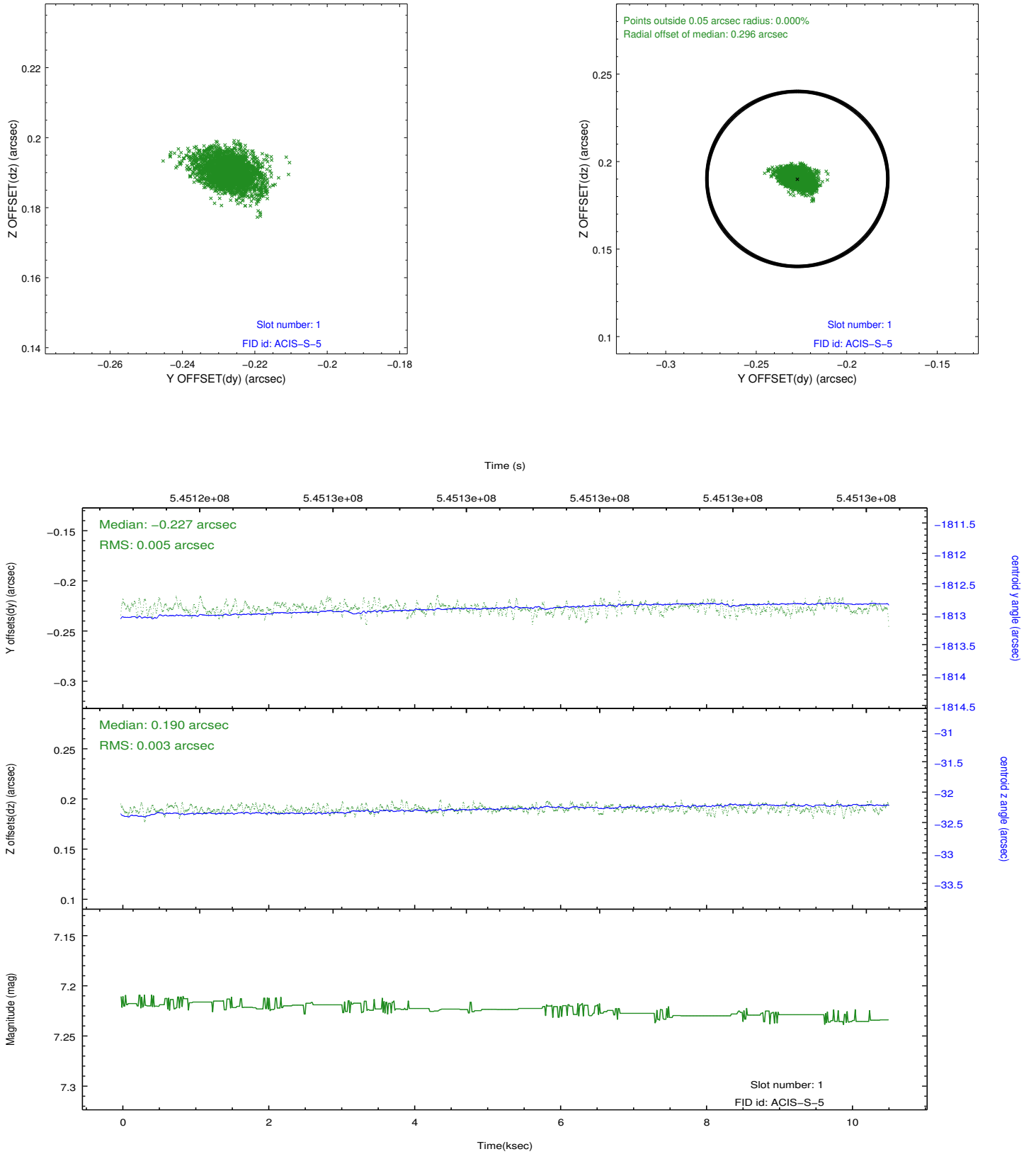


2.5 FID Slots

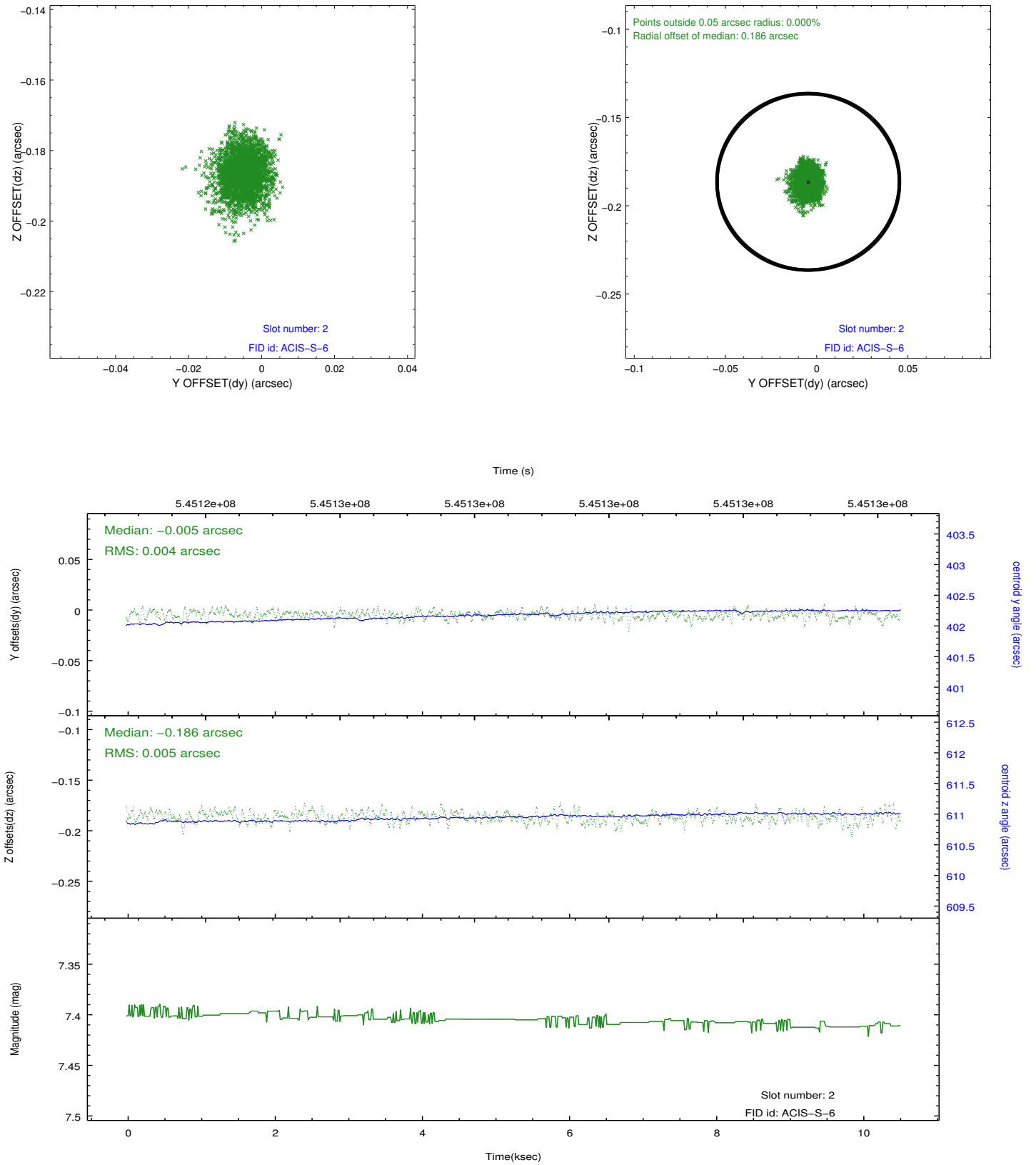
2.5.1 Slot 0



2.5.2 Slot 1



2.5.3 Slot 2



A Summary

A.1 Status

V&V Scientist	Beth Sundheim
V&V Date (YYYY-MM-DD)	2015.04.11
V&V Edition	1
V&V Disposition and Status	OK
V&V Charge Time	10.050200077415

A.2 Comments

Window preference met.