

V&V Reference Report

L2 ASCDS Version : 7.6.9

Observation 1698 - L2 Version 001
Chandra X-Ray Center

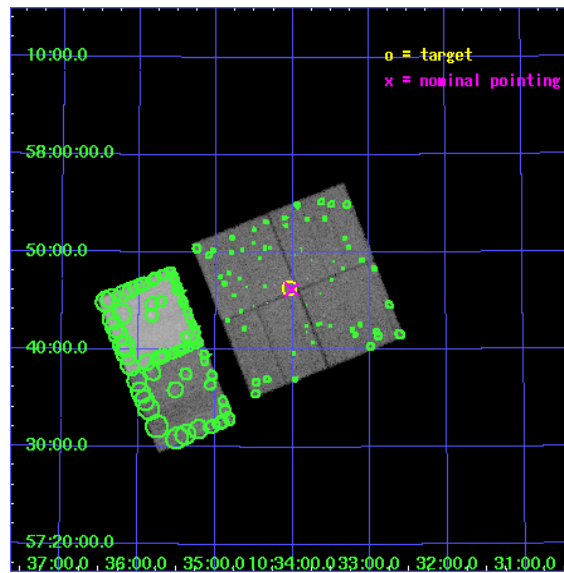
L2 Processing Date : Nov 22 2006

Contents

1	Front	2
2	OBI	3
2.1	OBI	3
2.1.1	Images	3
2.1.2	Bias	3
2.1.3	Parameters	4
2.1.4	Events	4
2.2	Compared Parameters	5
2.3	Aspect	6
2.4	Star Slots	9
2.4.1	Slot 3	9
2.4.2	Slot 4	10
2.4.3	Slot 5	11
2.4.4	Slot 6	12
2.4.5	Slot 7	13
2.5	FID Slots	14
2.5.1	Slot 0	14
2.5.2	Slot 1	15
3	Point Sources	16
A	Summary	17
A.1	Status	17
A.2	Comments	17

1 Front

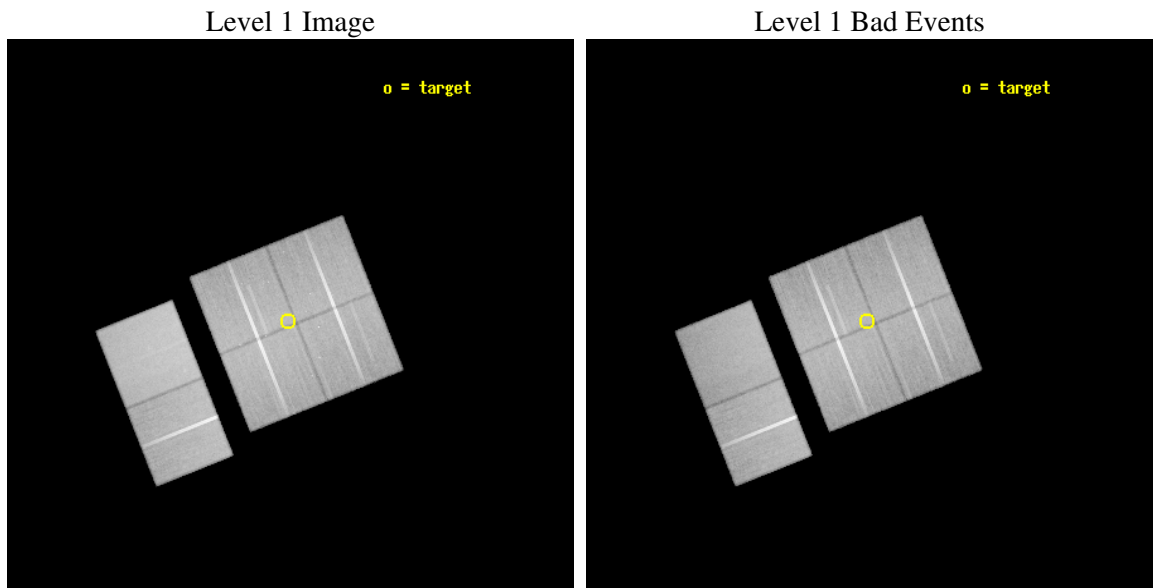
seq_num	900057
obs_id	1698
title	CHANDRA OBSERVATIONS OF THE DEEP ISO FIELD
observer	Dr. Richard Mushotzky
object	ISO NW #1
dtcycle	0
cycle	P
ra_targ	158.50875
dec_targ	57.773611
ra_nom	158.50247497406
dec_nom	57.77023612392
roll_nom	248.23573216769
revision	3
ontime	73932.800068855
livetime	72996.618437396
ontime0	73929.5591086
ontime1	73929.559088677
ontime2	73926.318148375
ontime3	73932.800068855
ontime6	73932.800068855
ontime7	73932.800068855
l2events	460059



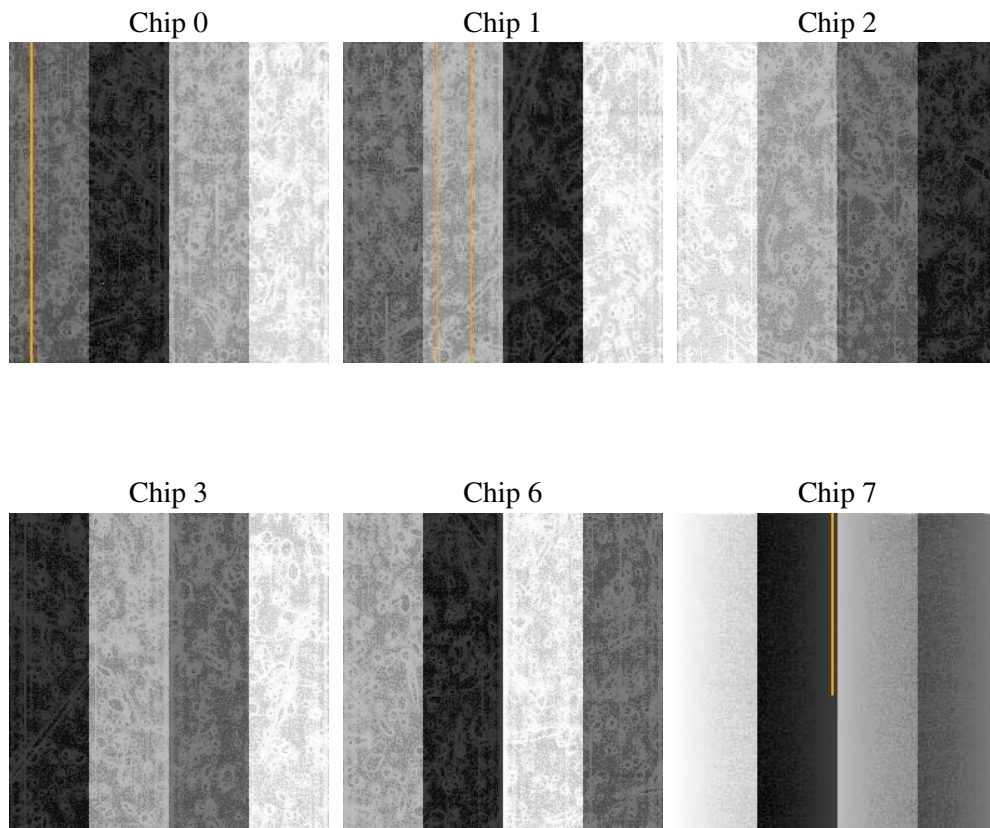
2 OBI

2.1 OBI

2.1.1 Images



2.1.2 Bias



2.1.3 Parameters

obi_num	2
ascdsver	7.6.9
caldsver	3.2.4
date	2006-11-22T18:34:34
revision	3

sched_exp_time	73735.000000
ontime	73982.251436546
ontime0	73979.010476291
ontime1	73979.010456368
ontime2	73975.769516066
ontime3	73982.251436546
ontime6	73982.251436546
ontime7	73982.251436546
l1events	2951948

2.1.4 Events

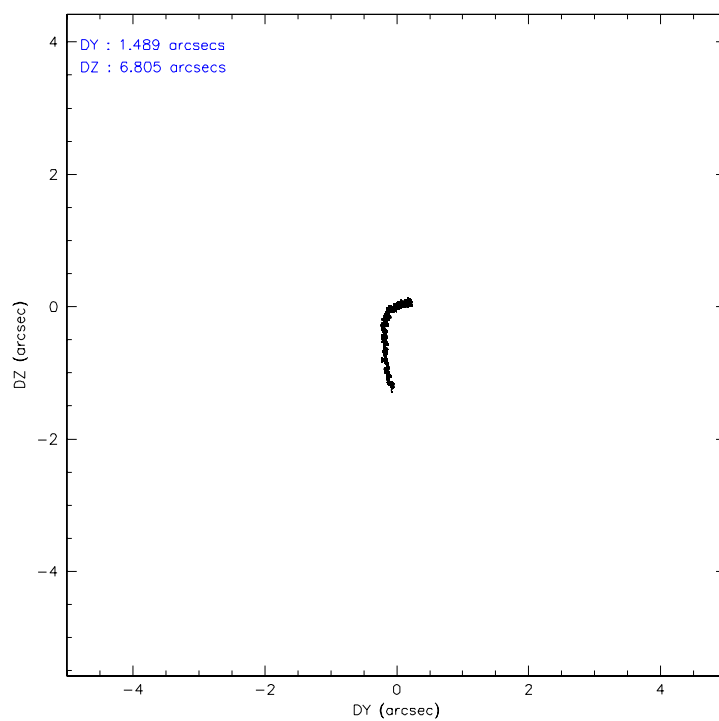
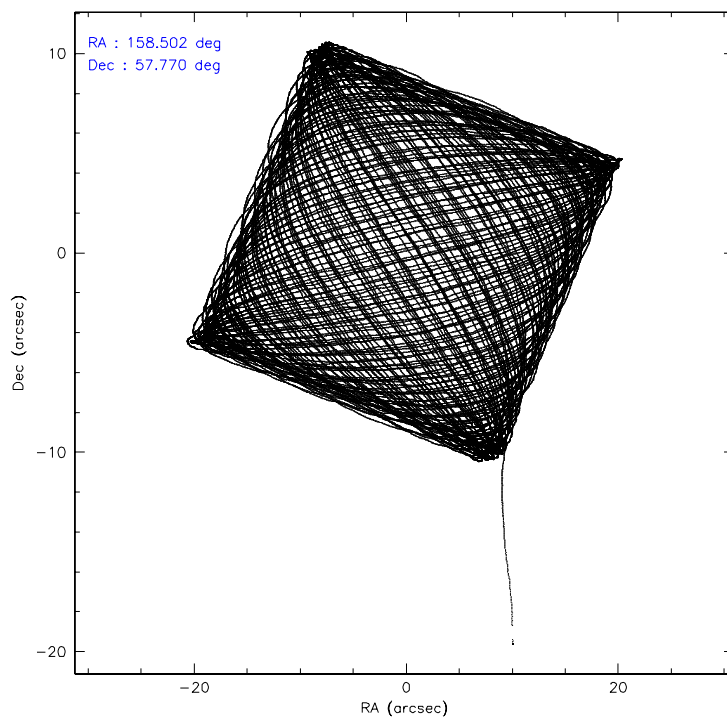
	ccd 0	ccd 1	ccd 2	ccd 3	ccd 6	ccd 7
level 1 events	445949	441912	480481	477233	500187	606186
rejected events	390315	384332	427255	423530	445283	375615
rejected %	87%	86%	88%	88%	89%	61%

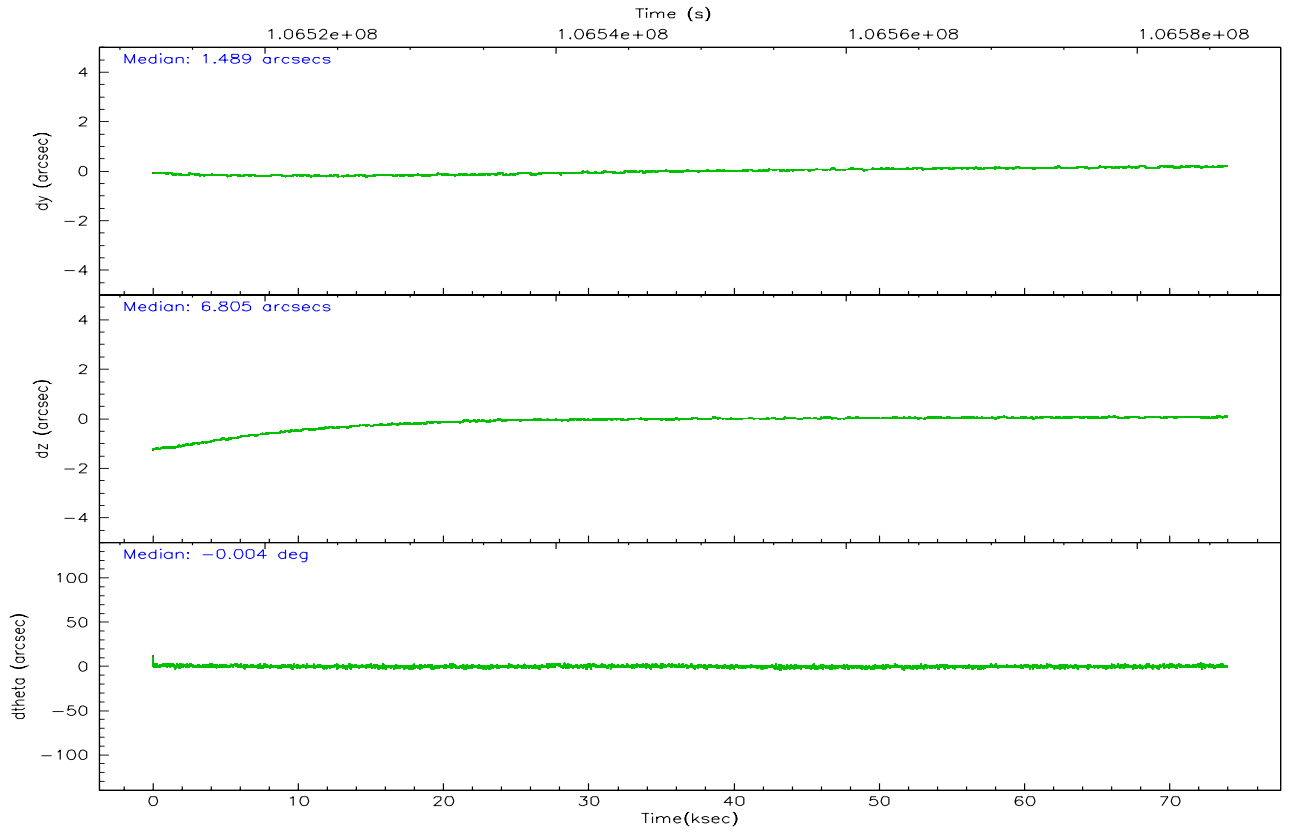
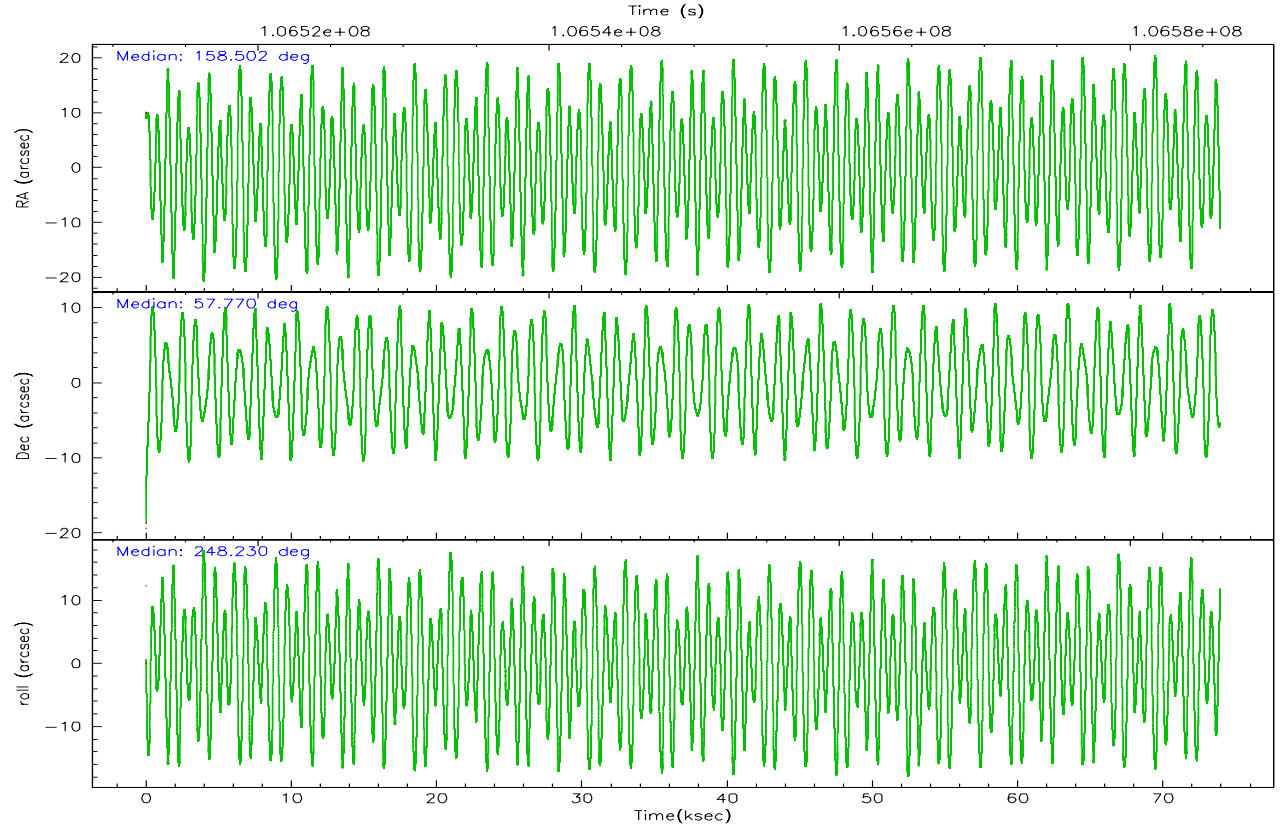
	ccd 0	ccd 1	ccd 2	ccd 3	ccd 6	ccd 7
grade 0 events	23534	23228	22326	23234	21806	14194
	5%	5%	4%	4%	4%	2%
grade 1 events	193	189	206	220	230	388
	0%	0%	0%	0%	0%	0%
grade 2 events	11855	11737	11410	10798	11107	56207
	2%	2%	2%	2%	2%	9%
grade 3 events	5634	6205	5128	5122	5632	12197
	1%	1%	1%	1%	1%	2%
grade 4 events	5068	5823	5053	5240	5346	12107
	1%	1%	1%	1%	1%	1%
grade 5 events	17382	18474	16146	18669	20577	41354
	3%	4%	3%	3%	4%	6%
grade 6 events	9579	10630	9360	9352	11044	136018
	2%	2%	1%	1%	2%	22%
grade 7 events	372704	365626	410852	404598	424445	333721
	83%	82%	85%	84%	84%	55%

2.2 Compared Parameters

Parameter	Planned	Actual	Parameter	Planned	Actual
Instrument	ACIS	ACIS	Obspar format version number	6	6
Detector	ACIS-012367	ACIS-012367	Obspar file type	PREDICTED	ACTUAL
Grating	NONE	NONE	Obspar update status	NONE	UPDATED
Data mode	FAINT	FAINT	Number of optional ACIS chips dropped	0	0
Observation mode	POINTING	POINTING	On-chip summing requested	N	N
Pointing RA	158.495066	158.5024749740627	Subarray requested	NONE	NONE
Pointing Dec	57.797404	57.7702361239205	Alternating exposures requested	N	N
Pointing Roll	248.033309	248.2357321676914	Primary exposure time	0.000000	3.2
SIM focus pos (mm)	-0.782348	-0.7809083437167272			
SIM defocus (mm)	0	0.001439871863259334			
SIM translation stage pos (mm)	-233.592463	-233.5874344608287			
SIM translation stage offset (mm)	0	-0.005018542100998502			
Observation start time	106512483.184000	106511378.13276			
Observation start date	2001-05-17T18:46:59	2001-05-17T18:29:38			
Observation end time	106586218.184000	106586759.19819			
Observation end date	2001-05-18T15:15:54	2001-05-18T15:25:59			
Read mode	TIMED	TIMED			

2.3 Aspect



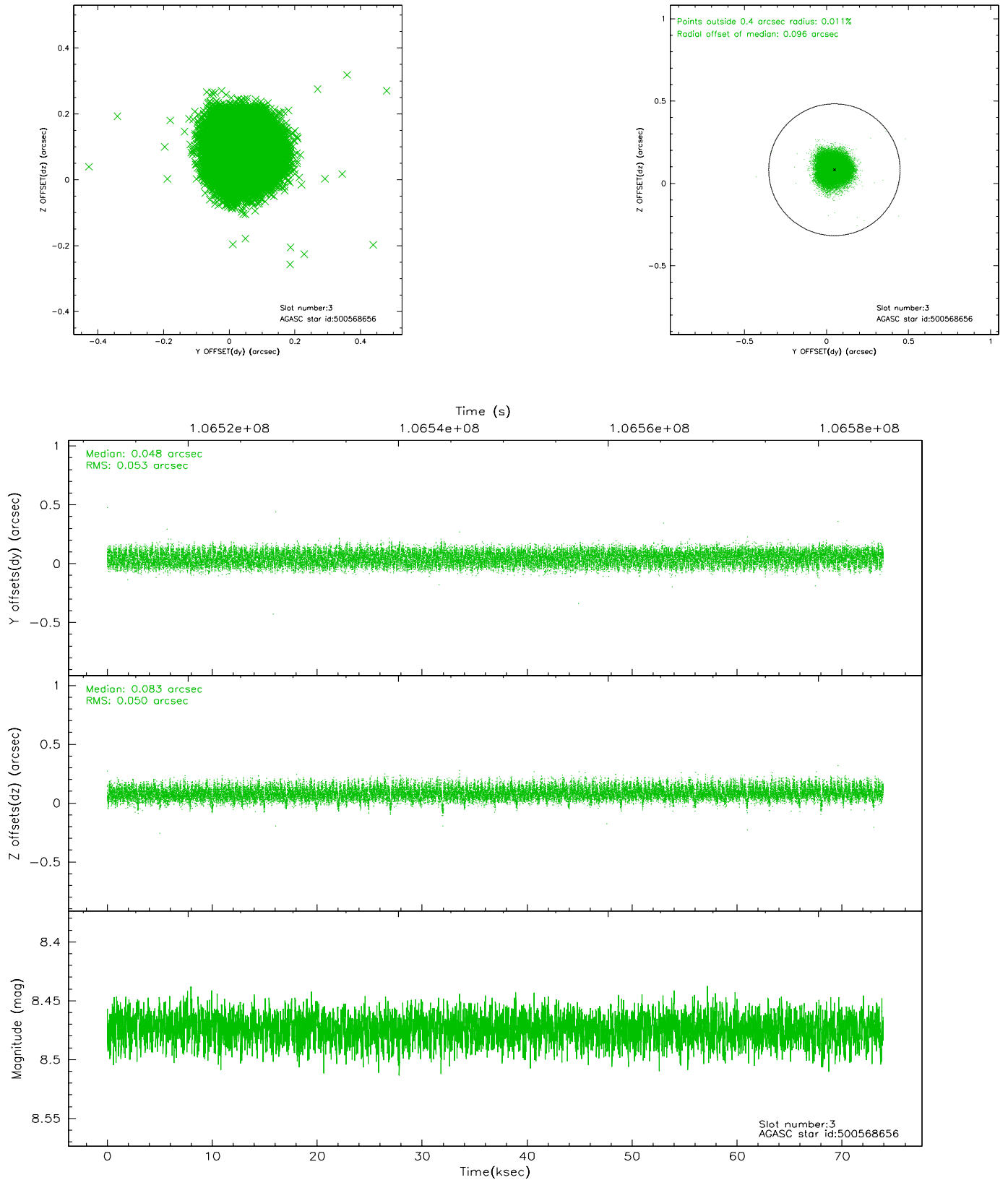


Slot Statistics

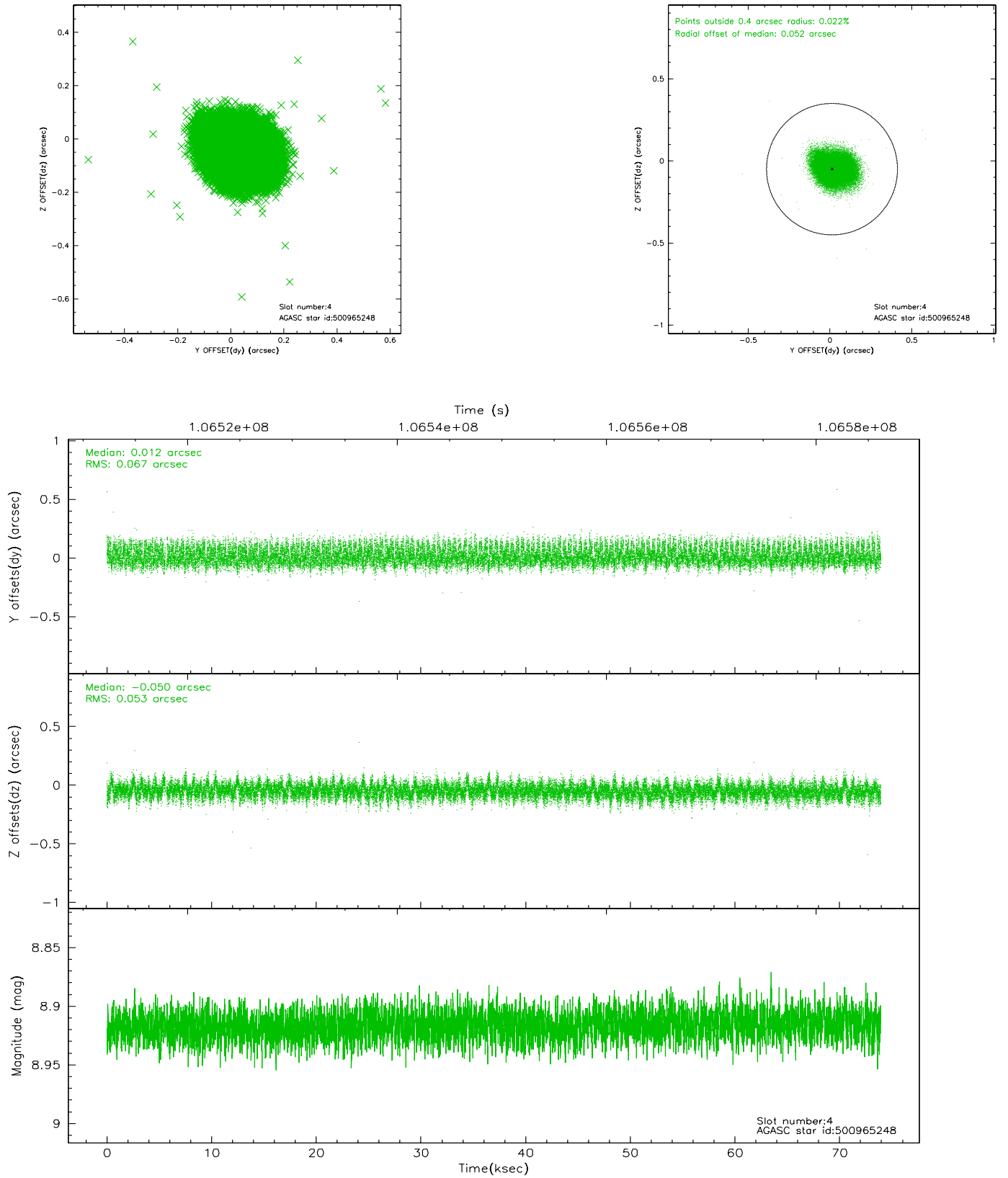
slot	status	id	mag	n_pts	med_dy	med_dz	dr1	dr2	ra	dec	mean_y	mean_z
0	FID	ACIS-I-2	7.15	18029	-0.036	0.020	0.006	0.011	0.000000	0.000000	-755.82	-836.42
1	FID	ACIS-I-4	7.18	18028	-0.033	0.024	0.006	0.011	0.000000	0.000000	2158.20	1069.89
2	OMITTED		0.00	0	0.000	0.000	0.000	0.000	0.000000	0.000000	0.00	0.00
3	GUIDE	500568656	8.47	36057	0.048	0.083	0.078	0.120	159.217900	57.306375	1105.94	1962.53
4	GUIDE	500965248	8.92	35991	0.012	-0.050	0.091	0.147	157.040068	57.653140	1501.71	-2415.36
5	GUIDE	500959408	9.51	36026	0.037	-0.088	0.097	0.156	157.361573	57.862425	577.67	-2107.07
6	GUIDE	500961384	9.50	35923	-0.063	0.065	0.094	0.149	159.416101	58.123584	-1755.87	1180.35
7	GUIDE	500962432	9.53	36041	-0.040	-0.011	0.096	0.154	158.977500	58.020820	-1093.78	551.22

2.4 Star Slots

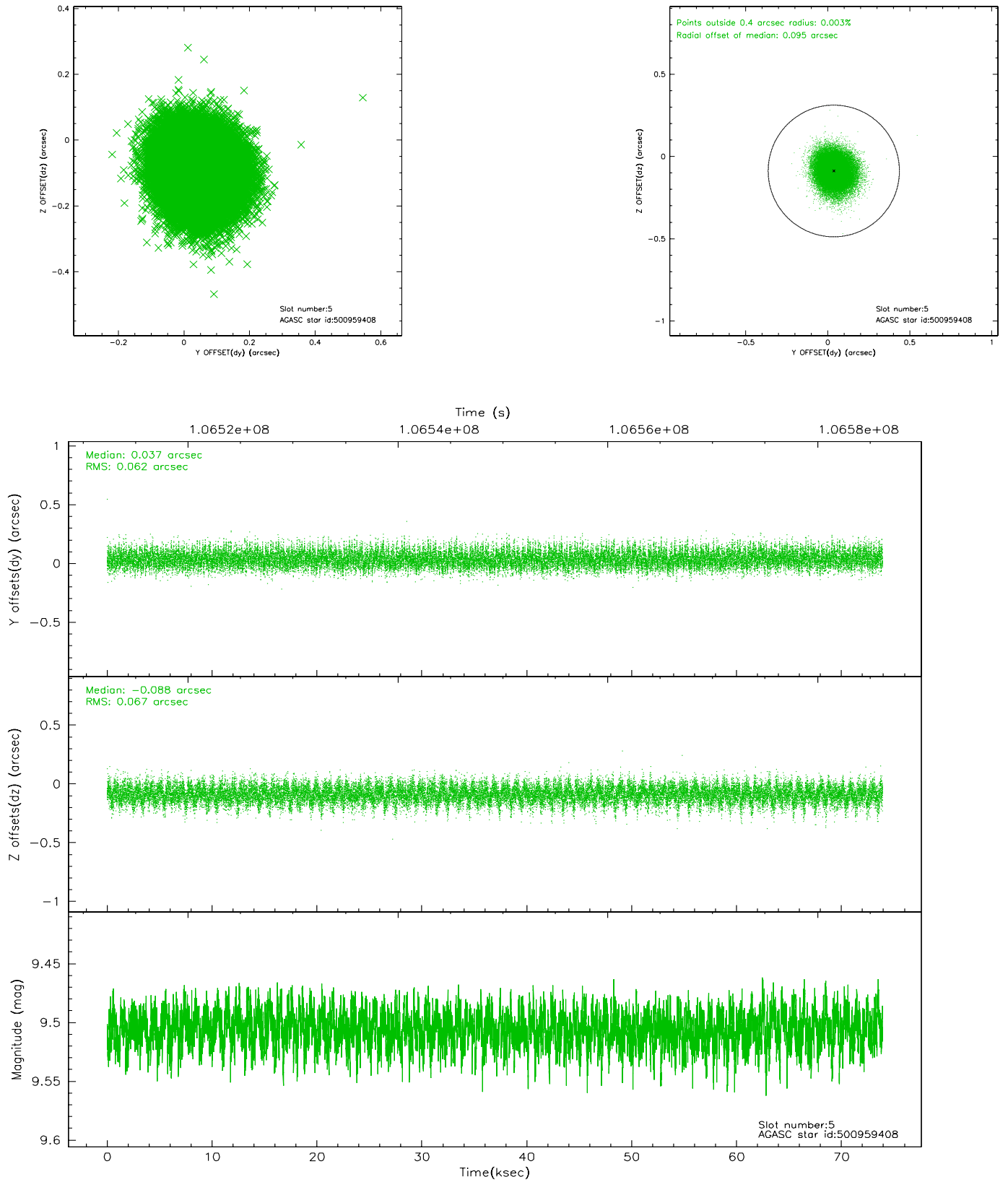
2.4.1 Slot 3



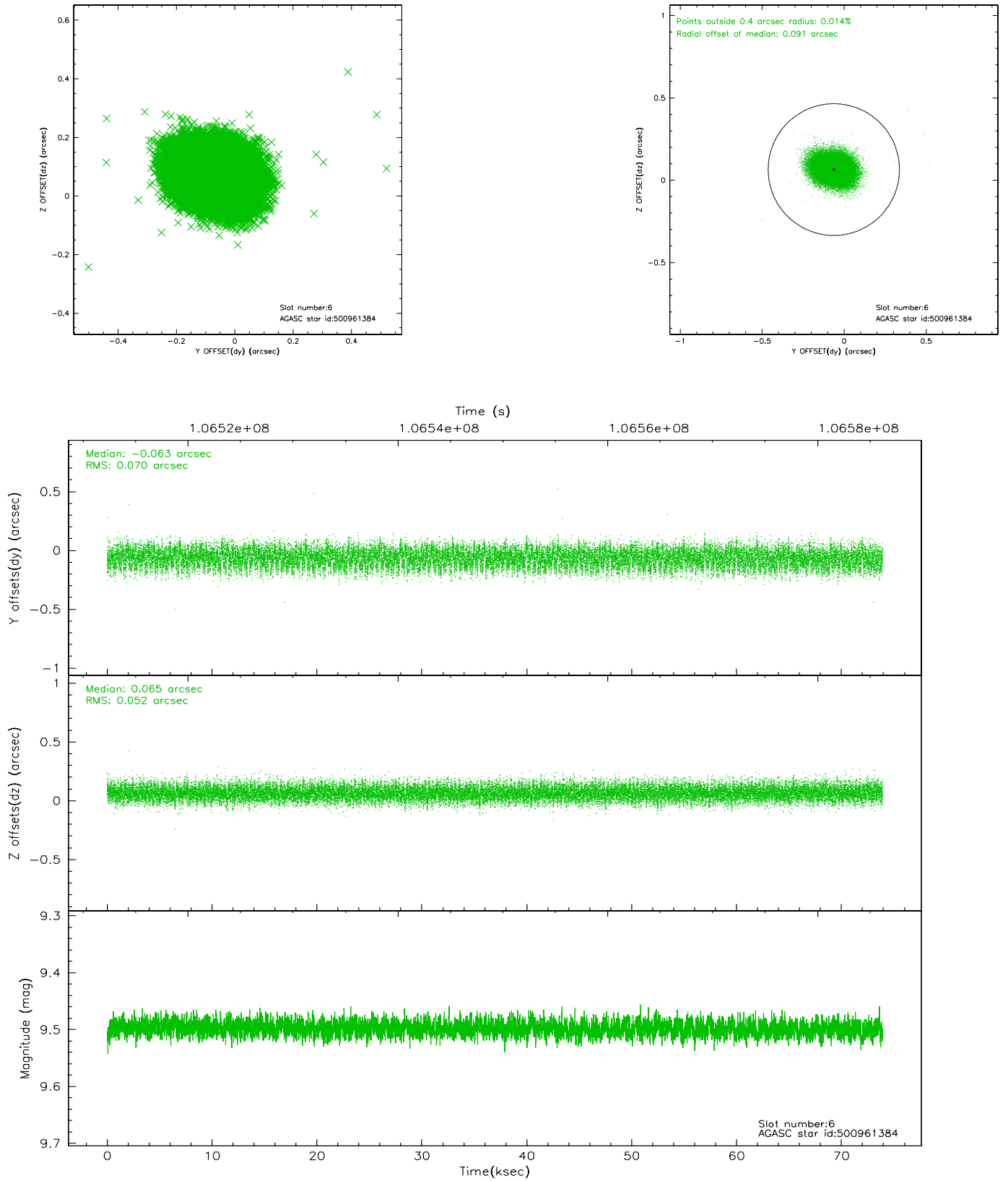
2.4.2 Slot 4



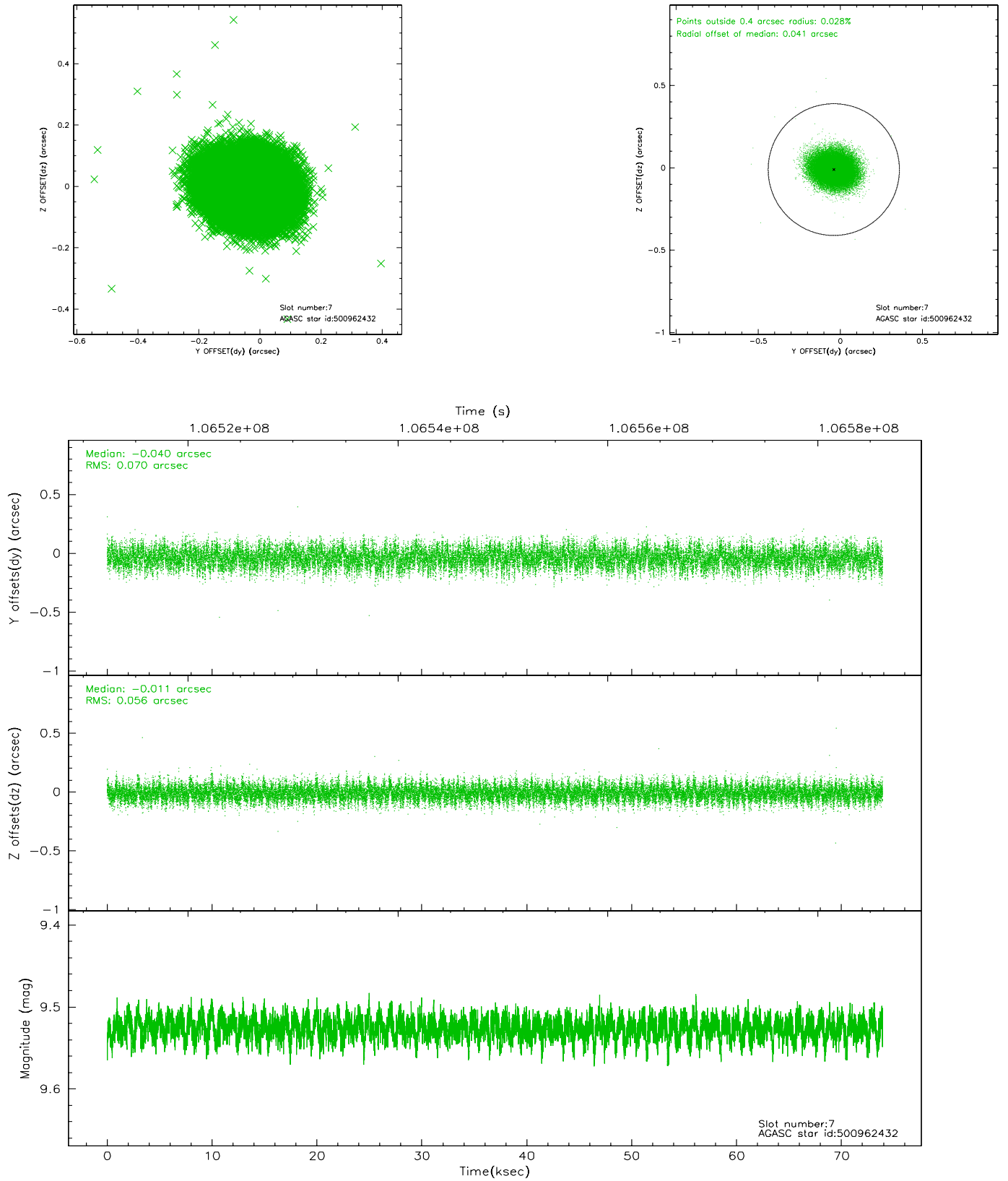
2.4.3 Slot 5



2.4.4 Slot 6

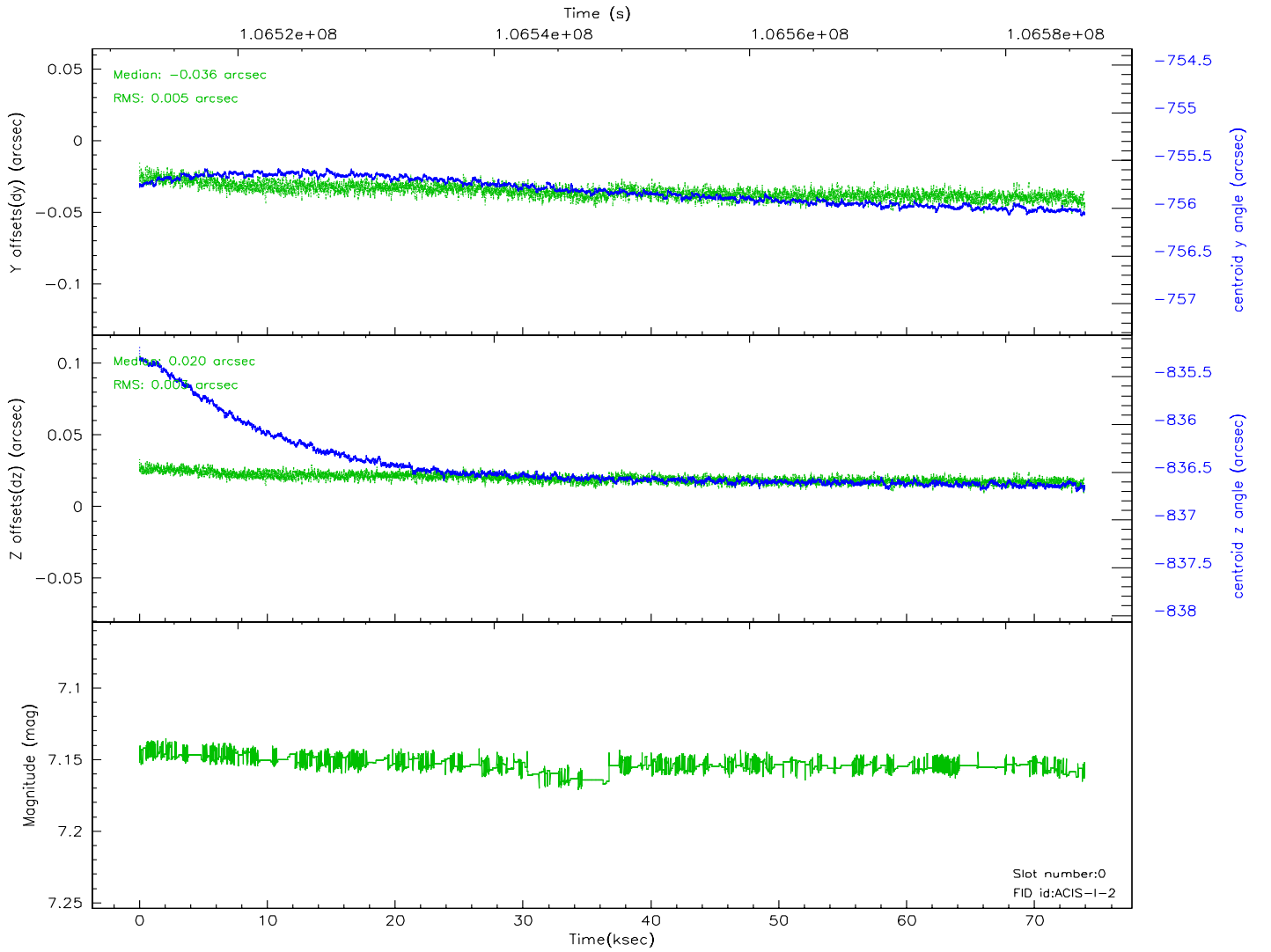
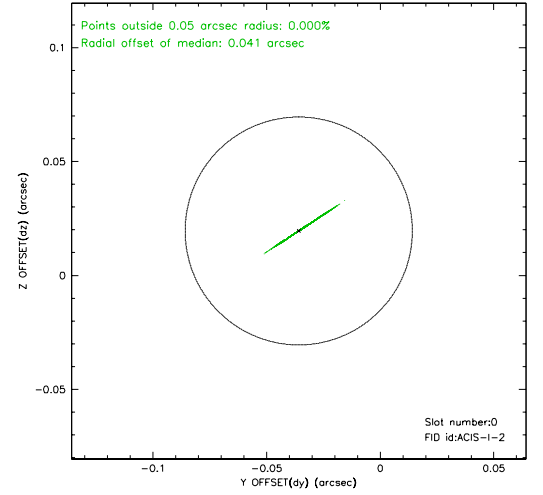
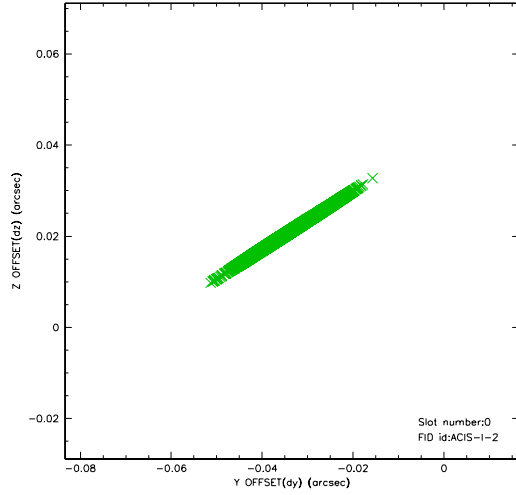


2.4.5 Slot 7

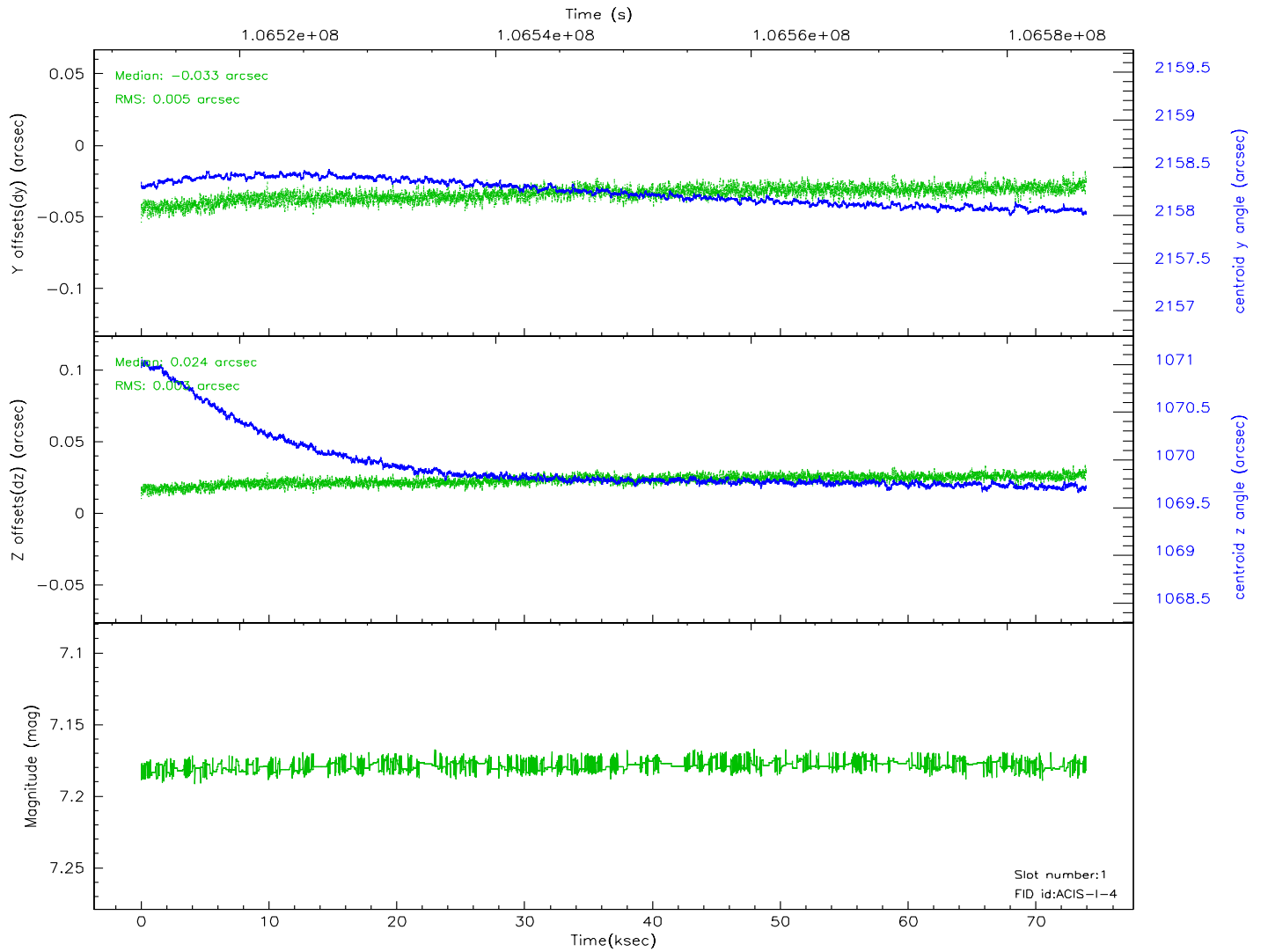
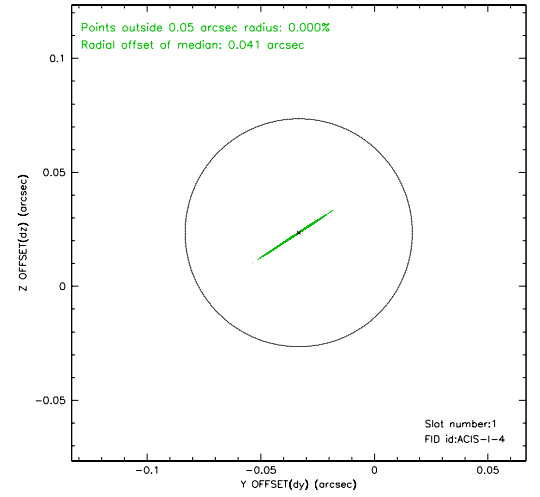
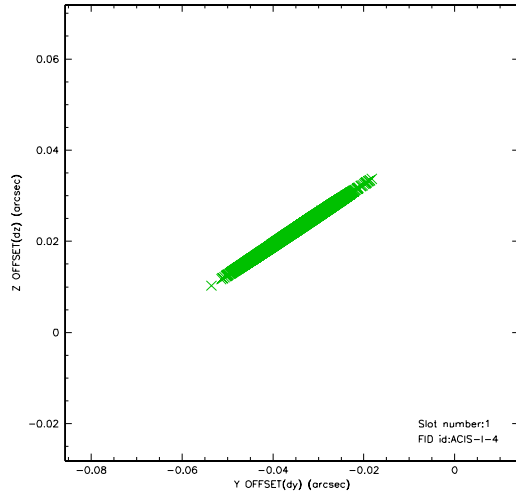


2.5 FID Slots

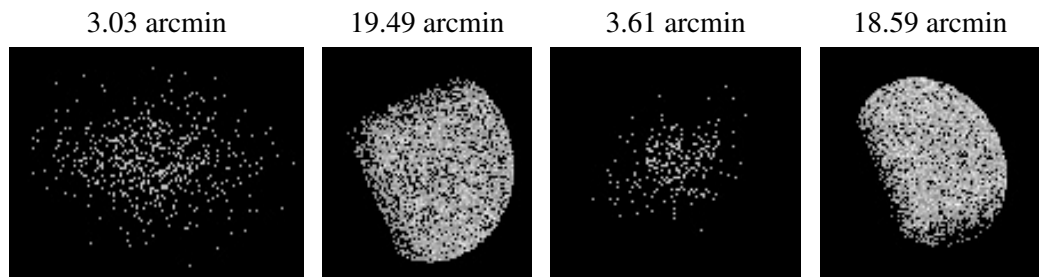
2.5.1 Slot 0



2.5.2 Slot 1



3 Point Sources



A Summary

A.1 Status

V&V Scientist	Jen Lauer
V&V Date (YYYY-MM-DD)	2010.10.01
V&V Edition	2
V&V Disposition and Status	OK
V&V Charge Time	74

A.2 Comments

The fid light in slot 2 was manually excluded from the processing due to poor data quality.