

V&V Reference Report

L2 ASCDS Version : 8.4.5

Observation 1688 - L2 Version 3
Chandra X-Ray Center

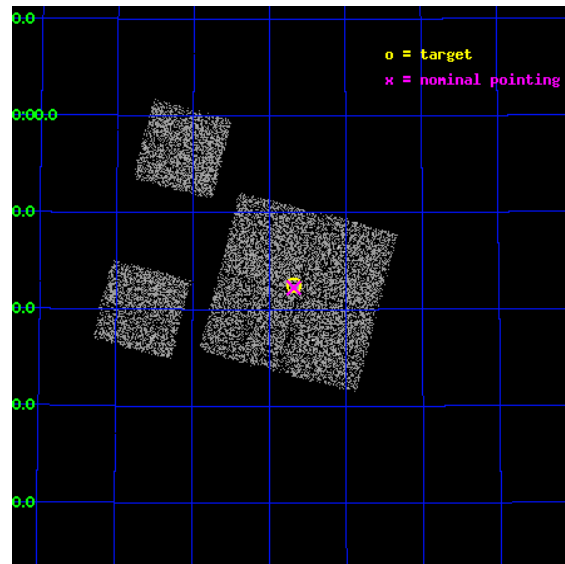
L2 Processing Date : Sep 20 2012

Contents

1	Front	2
2	OBI	3
2.1	OBI	3
2.1.1	Images	3
2.1.2	Bias	3
2.1.3	Parameters	4
2.1.4	Events	4
2.2	Compared Parameters	5
2.3	Aspect	6
2.4	Star Slots	9
2.4.1	Slot 3	9
2.4.2	Slot 4	10
2.4.3	Slot 5	11
2.4.4	Slot 6	12
2.4.5	Slot 7	13
2.5	FID Slots	14
2.5.1	Slot 0	14
2.5.2	Slot 1	15
2.5.3	Slot 2	16
A	Summary	17
A.1	Status	17
A.2	Comments	17

1 Front

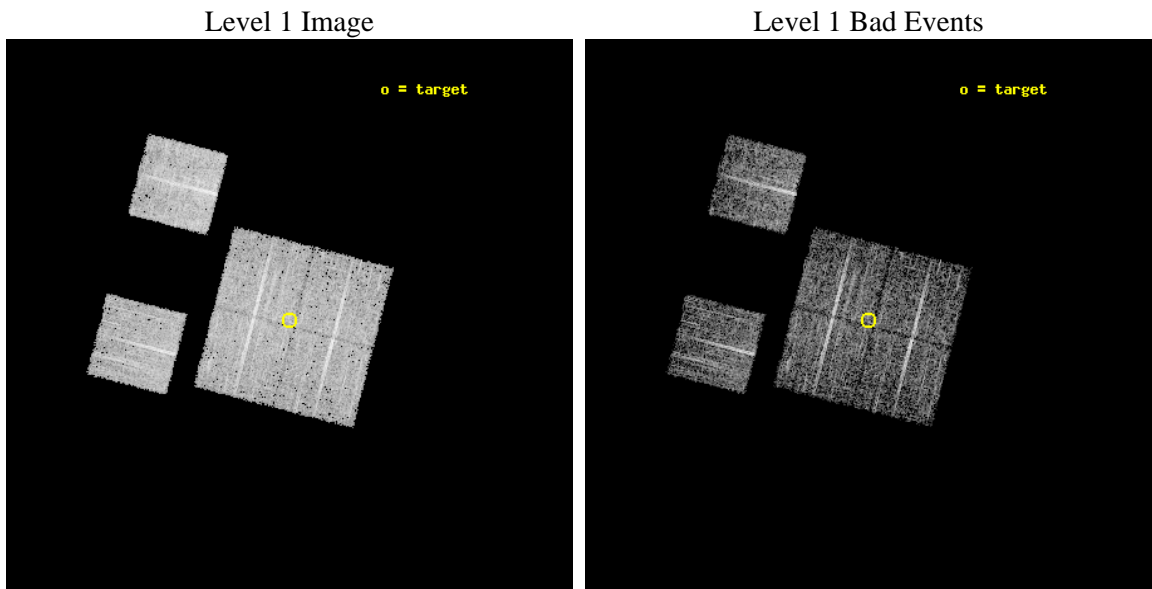
seq_num	900047	Sequence number
obs_id	1688	Observation id
title	LOCKMAN HOLE SHALLOW SURVEY	Proposal title
observer	Dr. Stephen Murray	Principal investigator
object	LOCKMAN HOLE #17	Source name
dtcycle	0	
cycle	P	events from which exps? Prim/Second/Both
ra_targ	163.670833	Observer's specified target RA [deg]
dec_targ	57.708889	Observer's specified target Dec [deg]
ra_nom	163.66961868383	Nominal RA [deg]
dec_nom	57.704242515145	Nominal Dec [deg]
roll_nom	284.53843138329	Nominal Roll [deg]
revision	3	Processing version of data
ontime	4758.4000044167	Sum of GTIs [s]
livetime	4698.1462783963	Livetime [s]
ontime0	4758.4000044167	Sum of GTIs [s]
ontime1	4758.4000044167	Sum of GTIs [s]
ontime2	4758.4000044167	Sum of GTIs [s]
ontime3	4758.4000044167	Sum of GTIs [s]
ontime6	4758.4000044167	Sum of GTIs [s]
ontime8	4758.4000044167	Sum of GTIs [s]
l2events	17931	Number of level 2 events



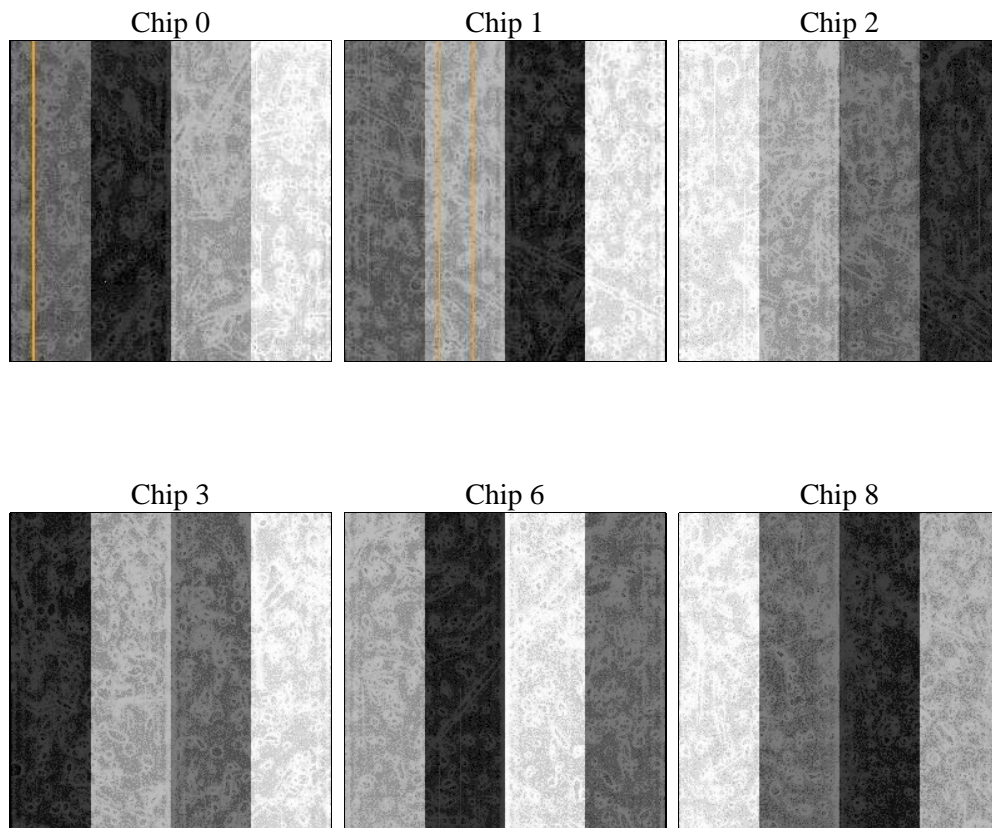
2 OBI

2.1 OBI

2.1.1 Images



2.1.2 Bias



2.1.3 Parameters

obi_num	0	Obi number	sched_exp_time	5000.000000	[s] Scheduled observation exposure time
ascdsver	8.4.5	Processing system revision	ontime	4758.4000044167	Sum of GTIs [s]
caldsver	4.5.1.1	 	ontime0	4758.4000044167	Sum of GTIs [s]
date	2012-09-20T12:45:04	Date and time of file creation	ontime1	4758.4000044167	Sum of GTIs [s]
revision	3	Processing version of data	ontime2	4758.4000044167	Sum of GTIs [s]
			ontime3	4758.4000044167	Sum of GTIs [s]
			ontime6	4758.4000044167	Sum of GTIs [s]
			ontime8	4758.4000044167	Sum of GTIs [s]
			l1events	192339	Number of level 1 events

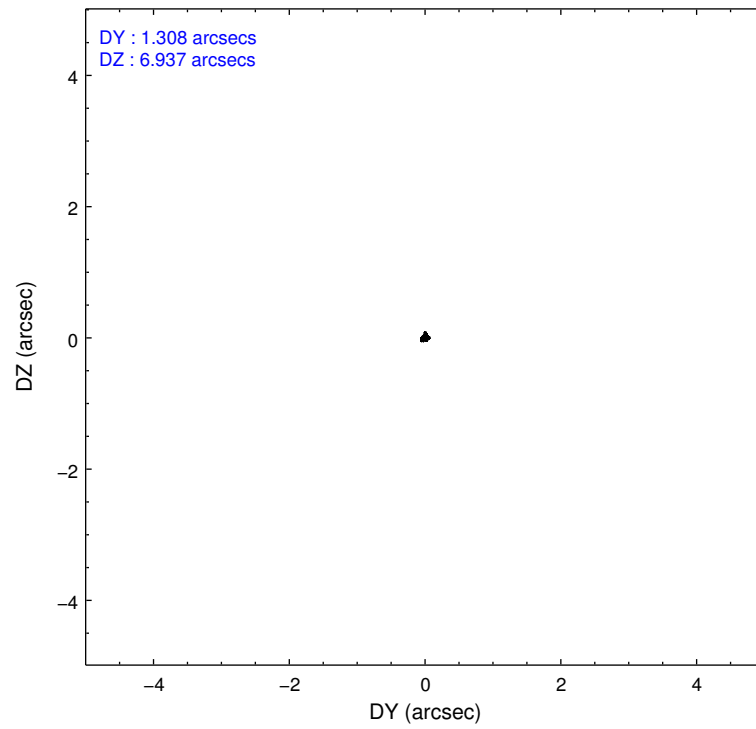
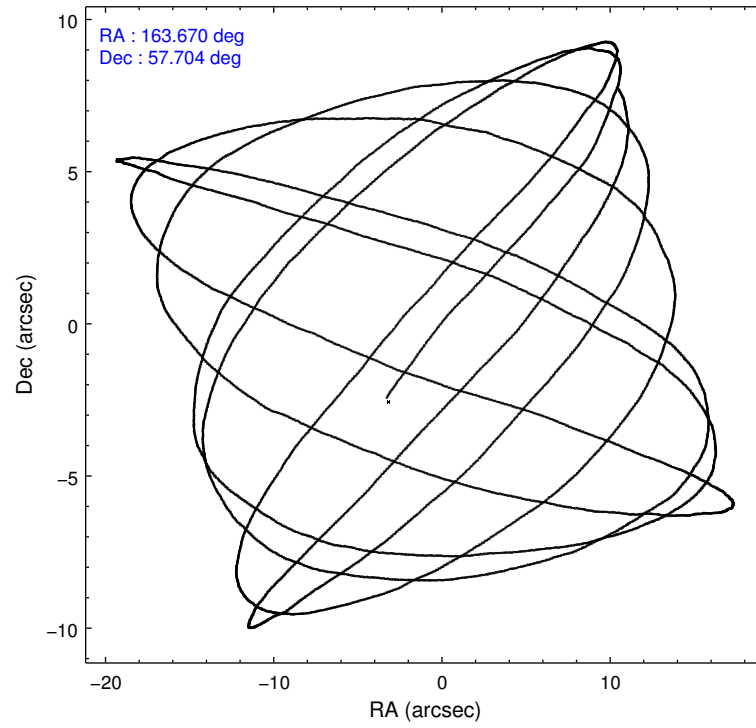
2.1.4 Events

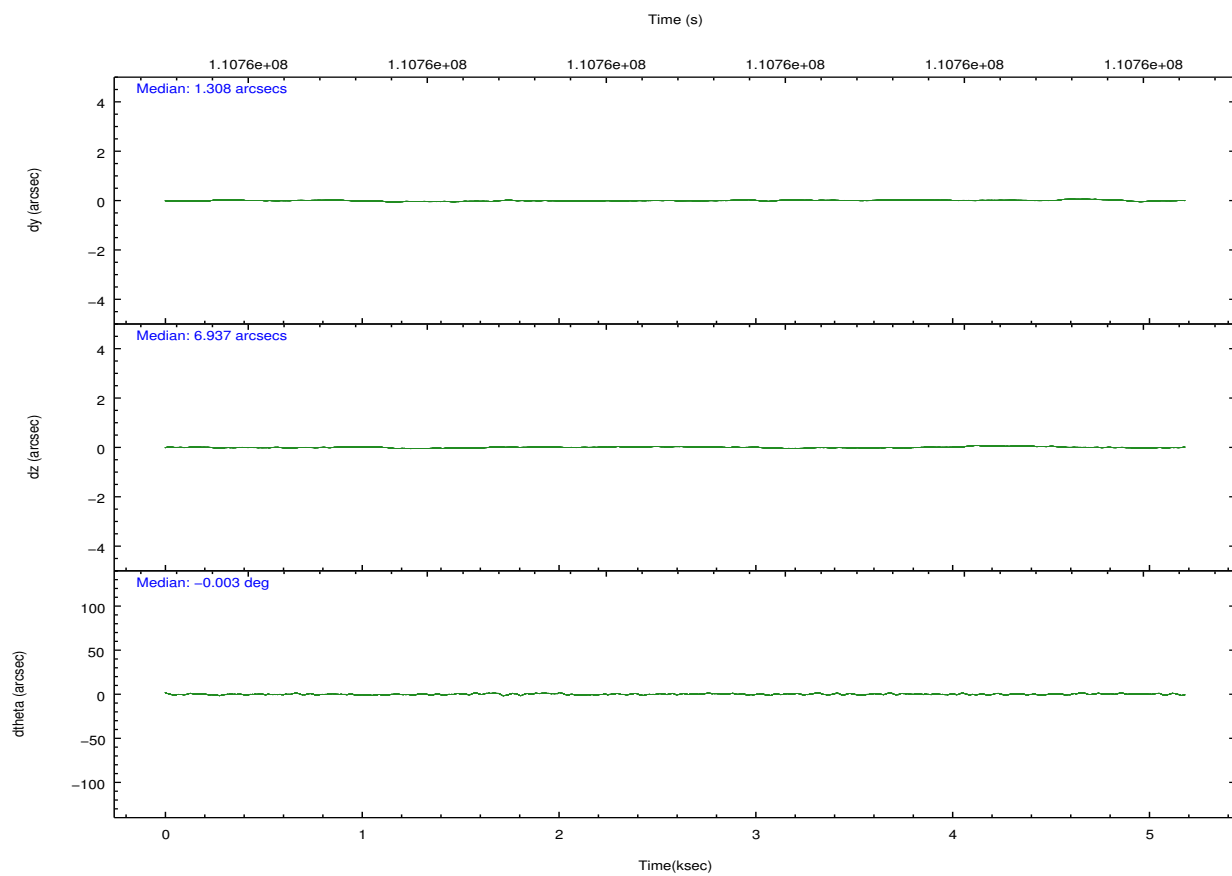
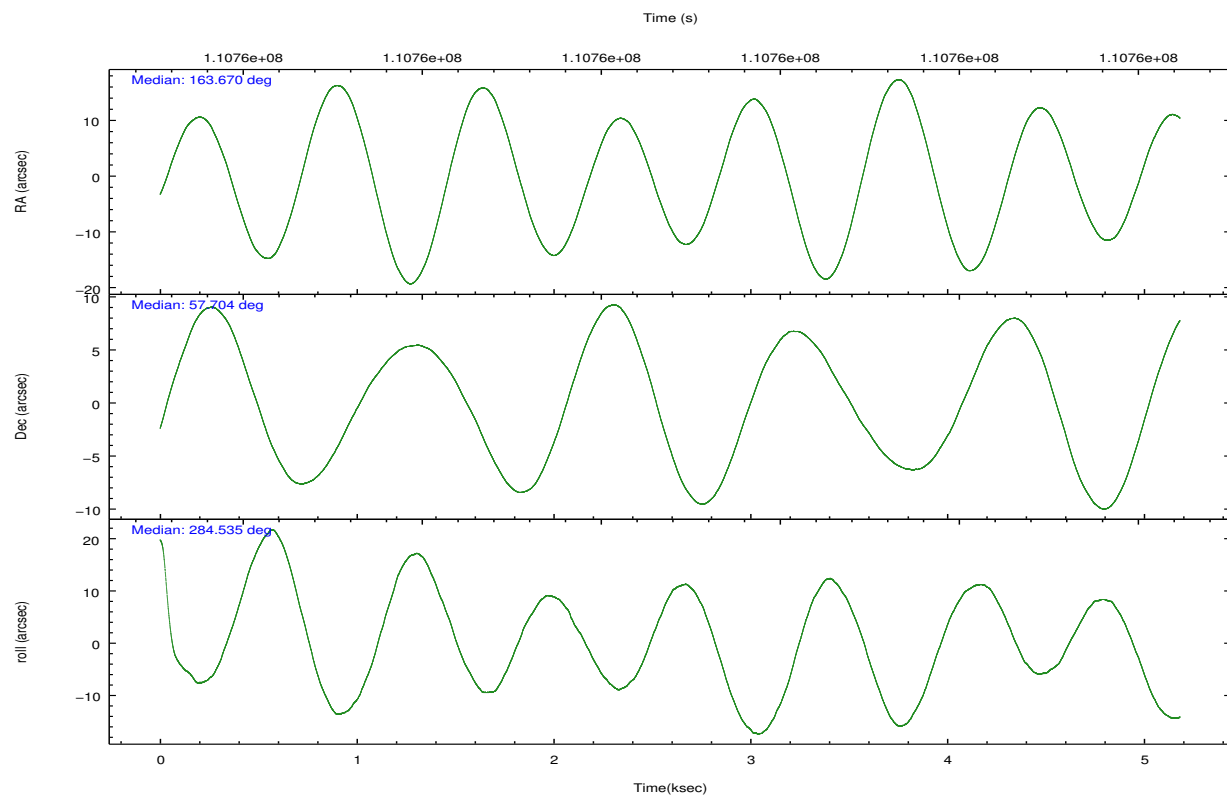
	ccd 0	ccd 1	ccd 2	ccd 3	ccd 6	ccd 8		ccd 0	ccd 1	ccd 2	ccd 3	ccd 6	ccd 8
level 1 events	28095	28170	31479	30981	32034	41580	grade 0 events	1521	1467	1370	1455	1330	2622
rejected events	24539	24530	28176	27556	28660	33140		5%	5%	4%	4%	4%	6%
rejected %	87%	87%	89%	88%	89%	79%	grade 1 events	10	16	19	17	10	18
								0%	0%	0%	0%	0%	0%
							grade 2 events	768	759	714	667	660	1776
								2%	2%	2%	2%	2%	4%
							grade 3 events	344	372	315	341	356	967
								1%	1%	1%	1%	1%	2%
							grade 4 events	337	377	332	346	356	844
								1%	1%	1%	1%	1%	2%
							grade 5 events	1107	1222	1044	1157	1289	1688
								3%	4%	3%	3%	4%	4%
							grade 6 events	587	675	578	620	677	2234
								2%	2%	1%	2%	2%	5%
							grade 7 events	23421	23282	27107	26378	27356	31431
								83%	82%	86%	85%	85%	75%

2.2 Compared Parameters

Parameter	Planned	Actual	Parameter	Planned	Actual
Instrument	ACIS	ACIS	Obspar format version number	7	7
Detector	ACIS-012368	ACIS-012368	Obspar file type	PREDICTED	ACTUAL
Grating	NONE	NONE	Obspar update status	NONE	UPDATED
Data mode	FAINT	FAINT	Number of optional ACIS chips dropped	0	0
Observation mode	POINTING	POINTING	On-chip summing requested	N	N
[deg] Pointing RA	163.633449	163.6696186838308	Subarray requested	NONE	NONE
[deg] Pointing Dec	57.723733	57.70424251514533	Alternating exposures requested	N	N
[deg] Pointing Roll	284.360315	284.5384313832887	[s] Primary exposure time	0.000000	3.2
[mm] SIM focus pos	-0.782348	-0.7809083437167272			
[mm] SIM defocus	0	0.001439871863259334			
[mm] SIM translation stage pos	-233.592463	-233.5874344608287			
[mm] SIM translation stage offset	0	-0.005018542100998502			
[s] Observation start time (MET)	110757973.184000	110757596.59827			
Observation start date	2001-07-05T22:05:09	2001-07-05T21:59:56			
[s] Observation end time (MET)	110762973.184000	110763106.99848			
Observation end date	2001-07-05T23:28:29	2001-07-05T23:31:46			
Read mode	TIMED	TIMED			

2.3 Aspect



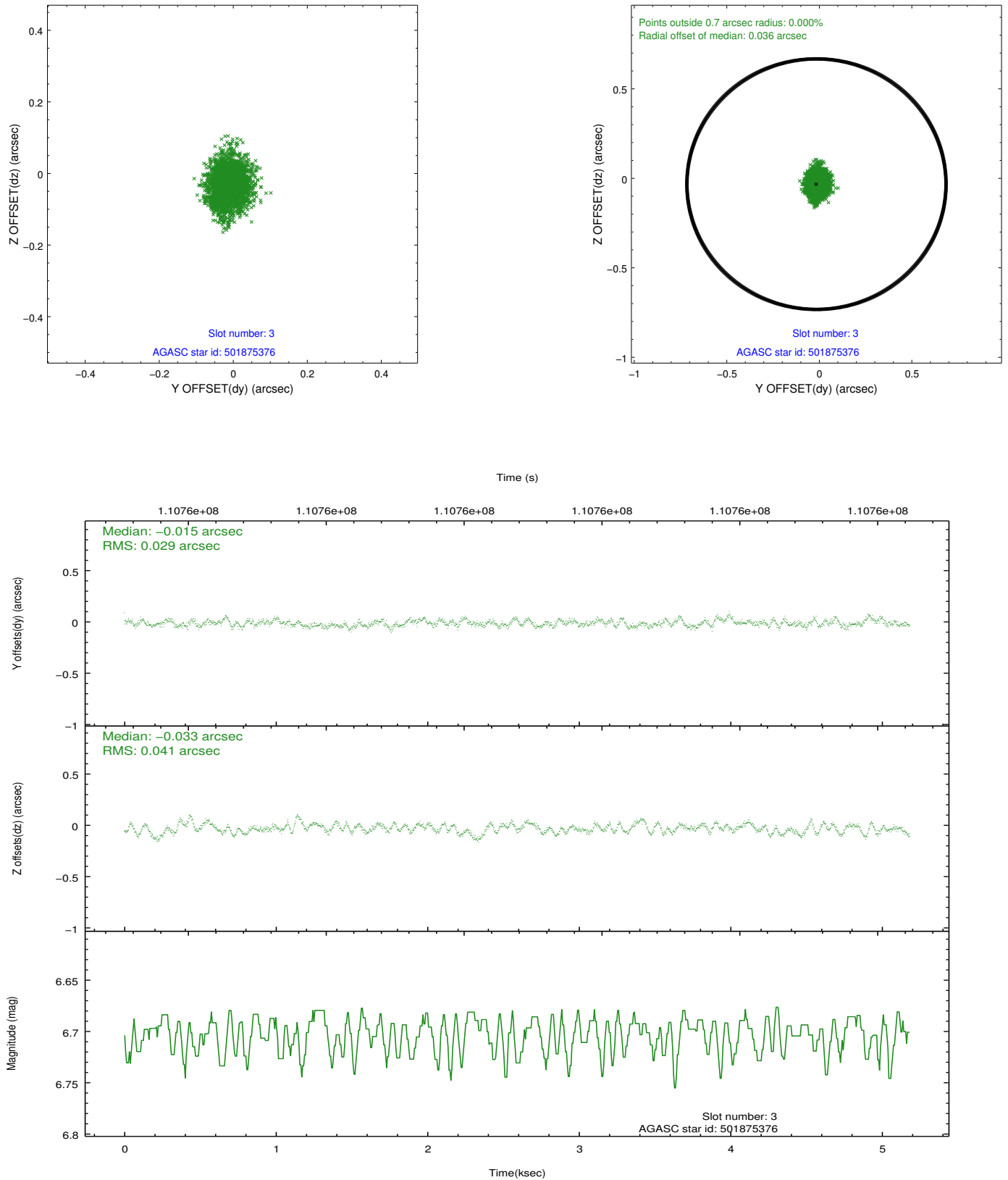


Slot Statistics

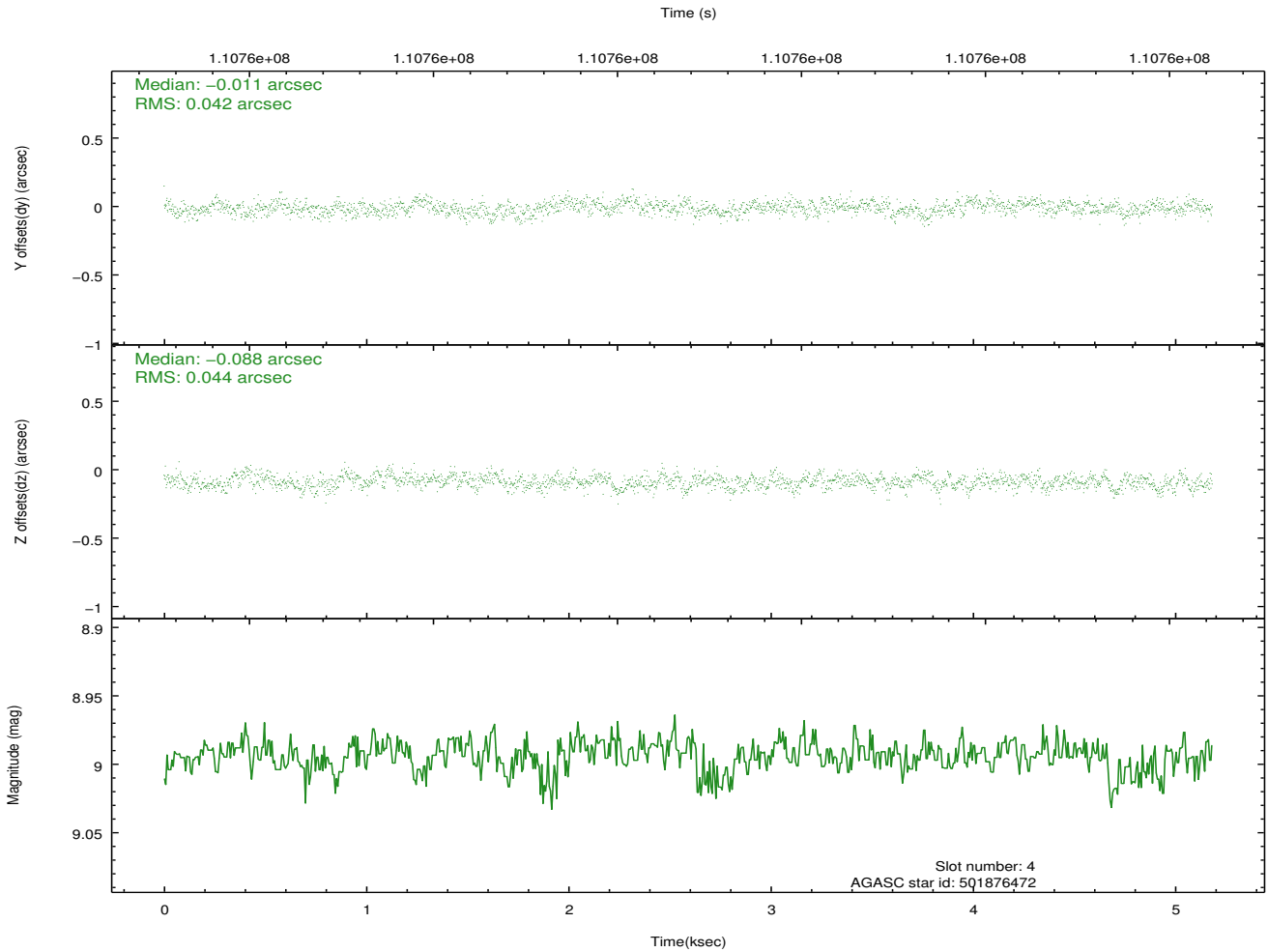
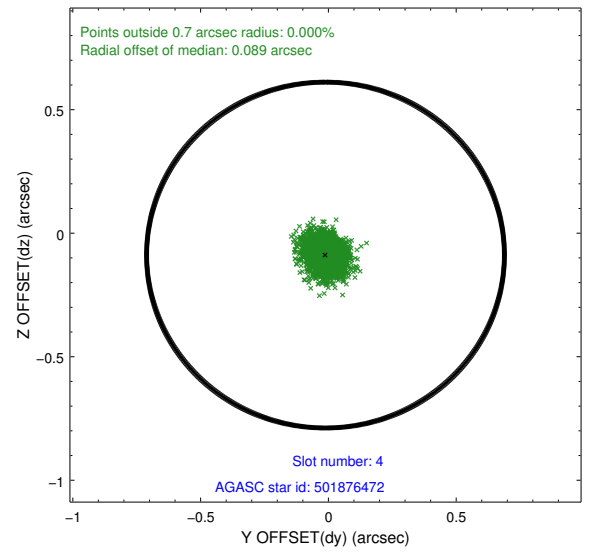
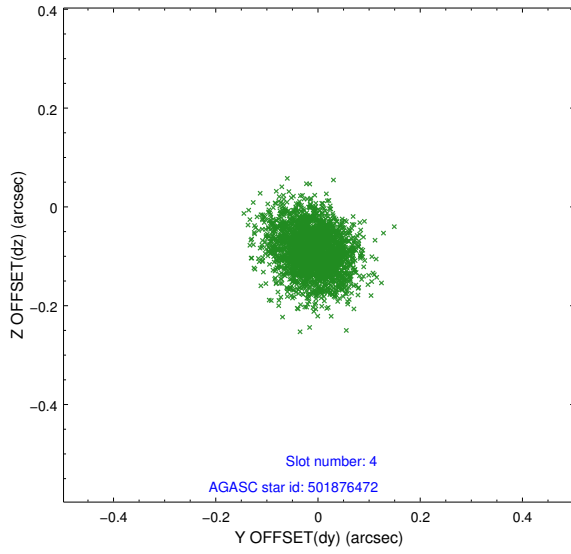
slot	status	id	mag	n_pts	med_dy	med_dz	dr1	dr2	ra	dec	mean_y	mean_z
0	FID	ACIS-I-2	7.16	1264	-0.035	-0.067	0.009	0.015	0.000000	0.000000	-755.66	-836.77
1	FID	ACIS-I-4	7.18	1264	-0.051	0.046	0.005	0.010	0.000000	0.000000	2157.83	1068.97
2	FID	ACIS-I-5	7.23	1264	-0.016	0.089	0.009	0.015	0.000000	0.000000	-1807.99	1068.14
3	GUIDE	501875376	6.70	2529	-0.015	-0.033	0.054	0.088	164.111621	57.502963	996.37	698.92
4	GUIDE	501876472	8.99	2528	-0.011	-0.088	0.065	0.106	163.621724	57.867447	-506.14	105.86
5	GUIDE	501874936	9.95	2529	0.108	-0.047	0.139	0.233	164.170577	58.432800	-2225.71	1614.00
6	GUIDE	501877264	9.31	2529	-0.023	0.139	0.088	0.146	163.254394	57.702218	-108.41	-724.94
7	GUIDE	501877056	9.69	2526	-0.061	0.028	0.101	0.170	164.433826	58.166965	-1177.58	1869.18

2.4 Star Slots

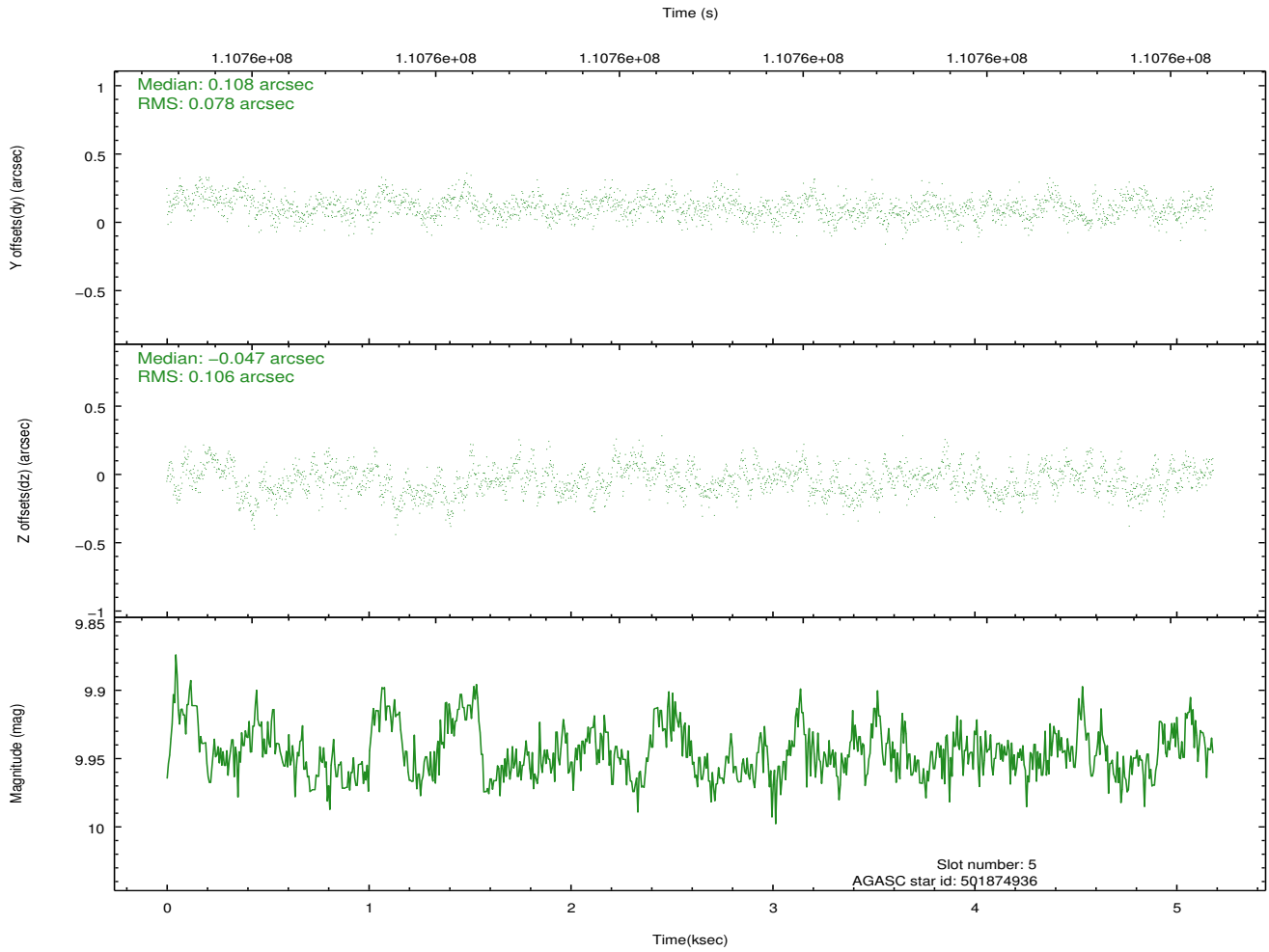
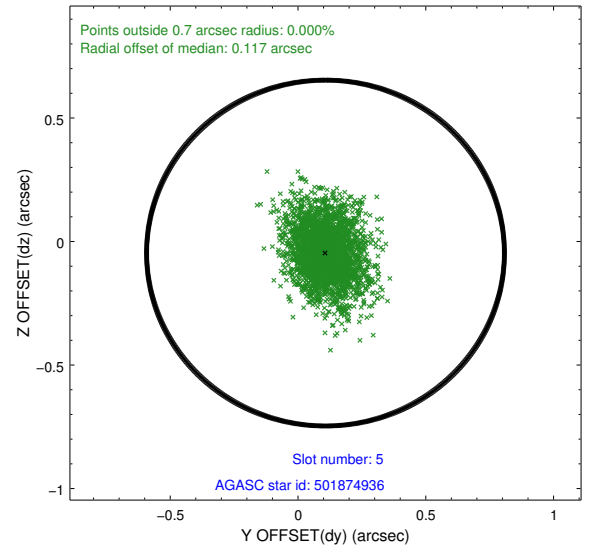
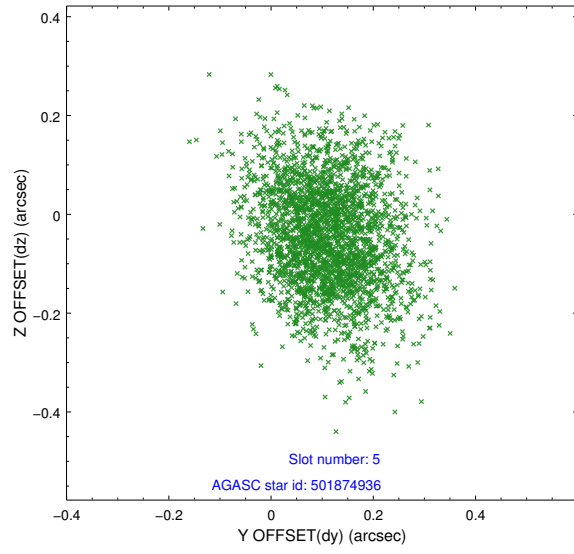
2.4.1 Slot 3



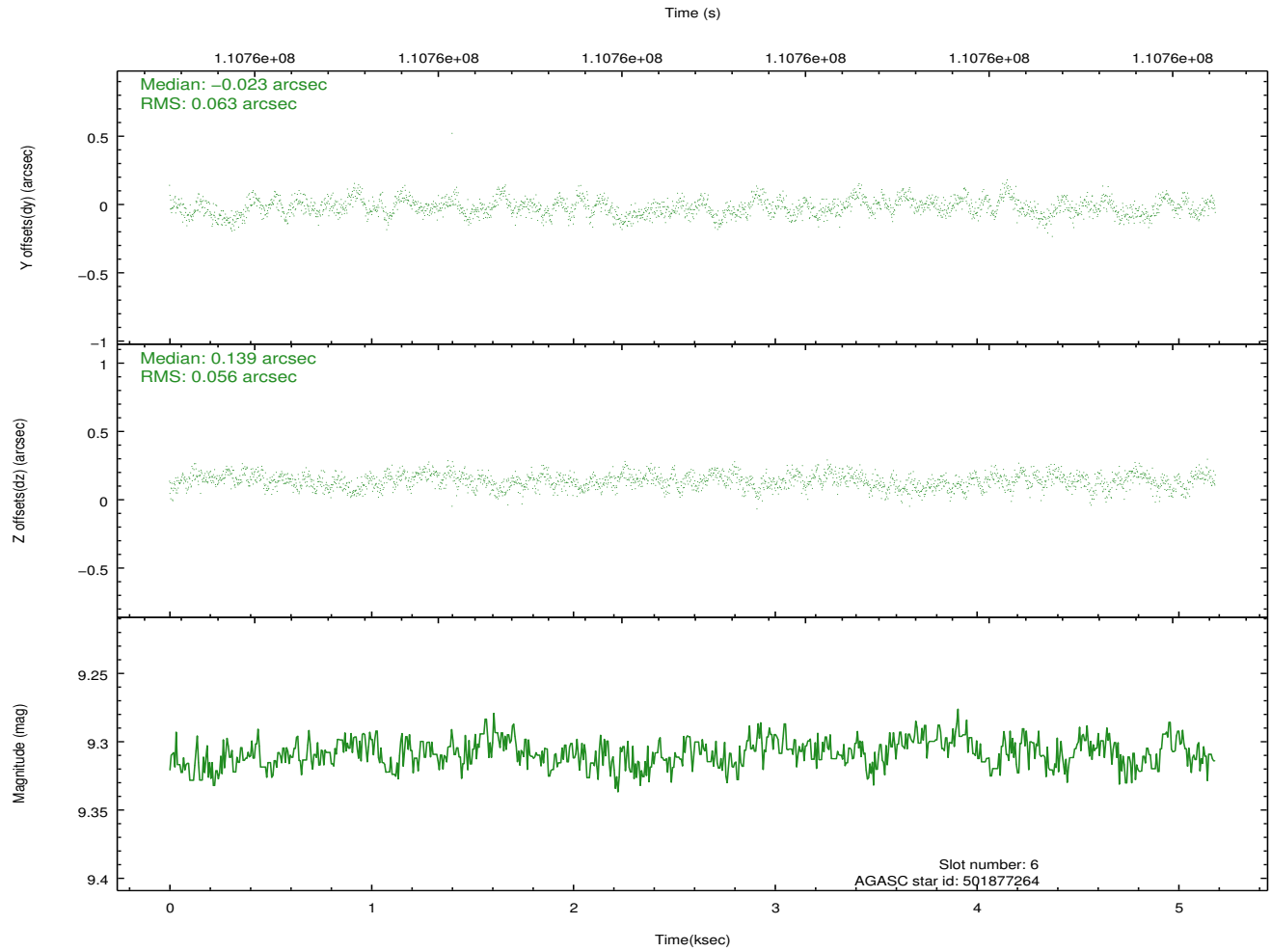
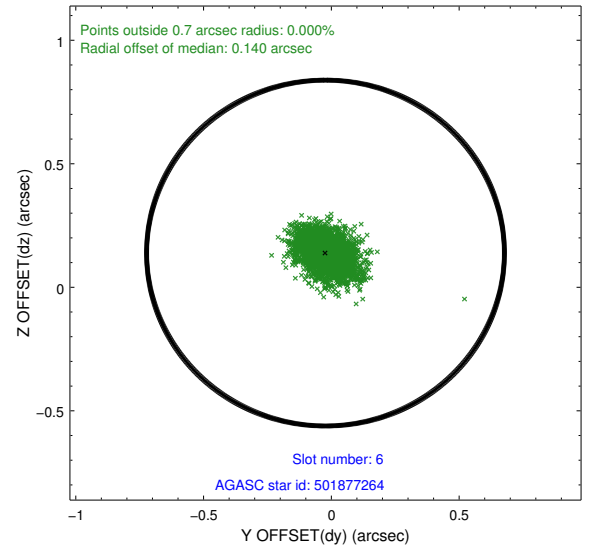
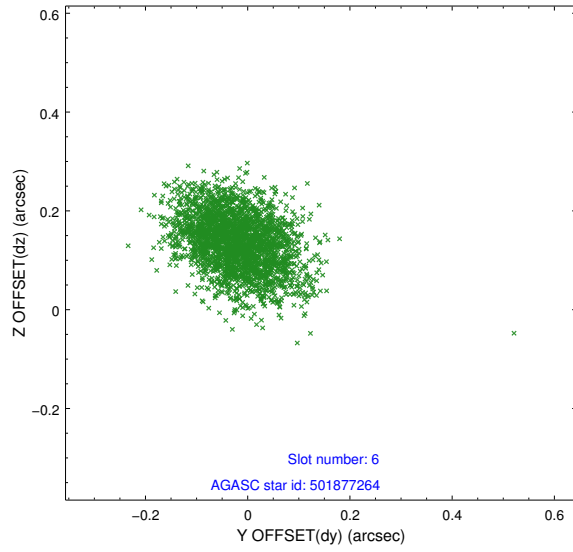
2.4.2 Slot 4



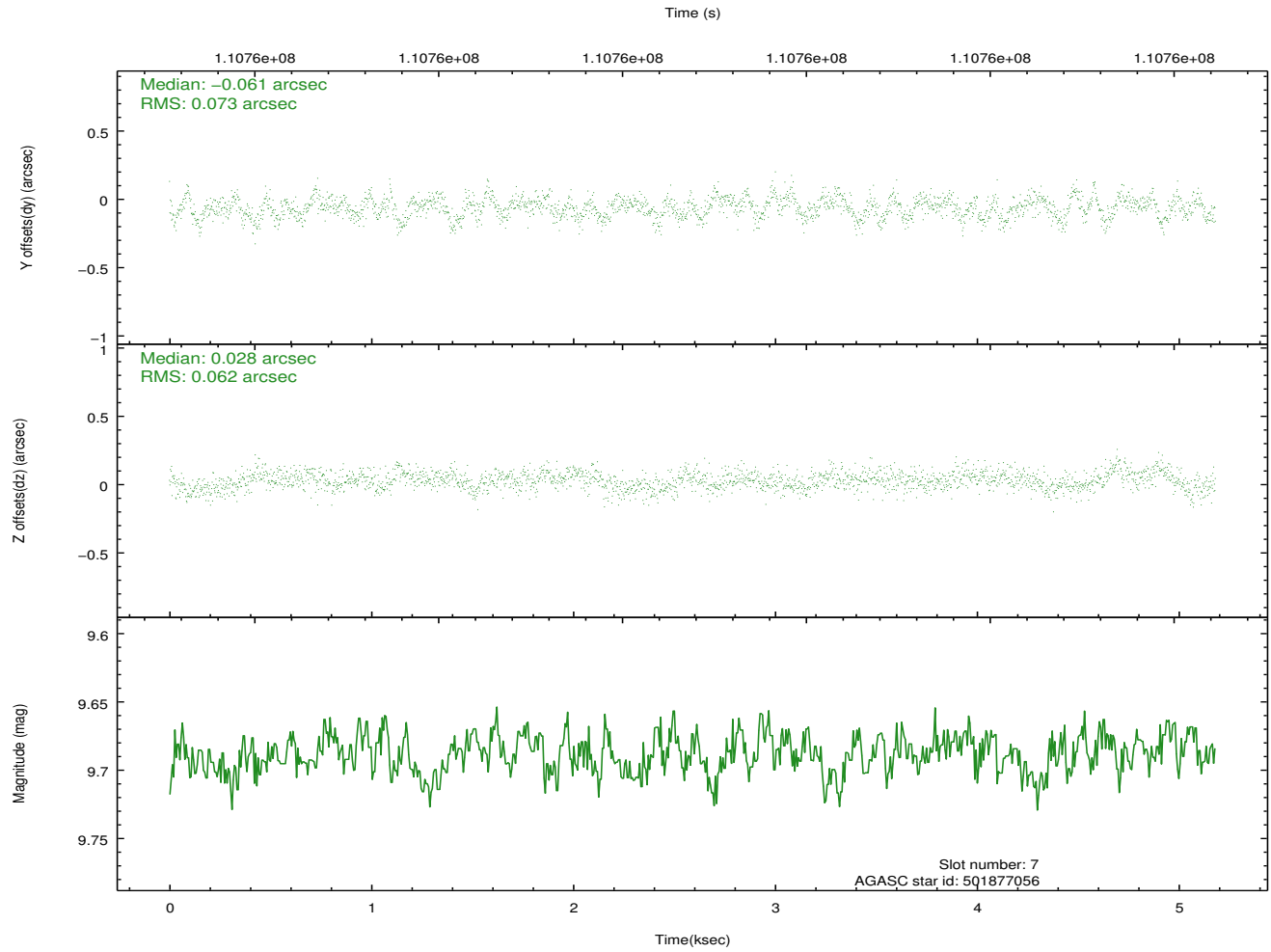
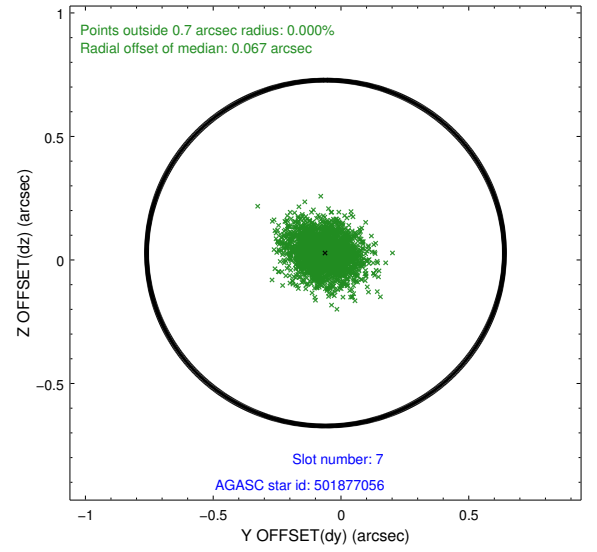
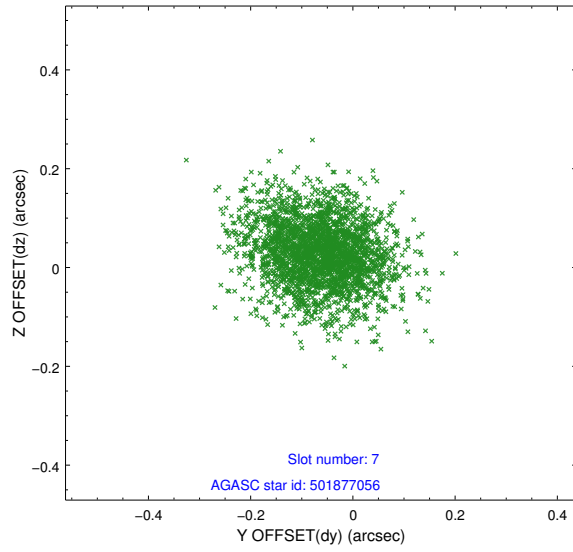
2.4.3 Slot 5



2.4.4 Slot 6

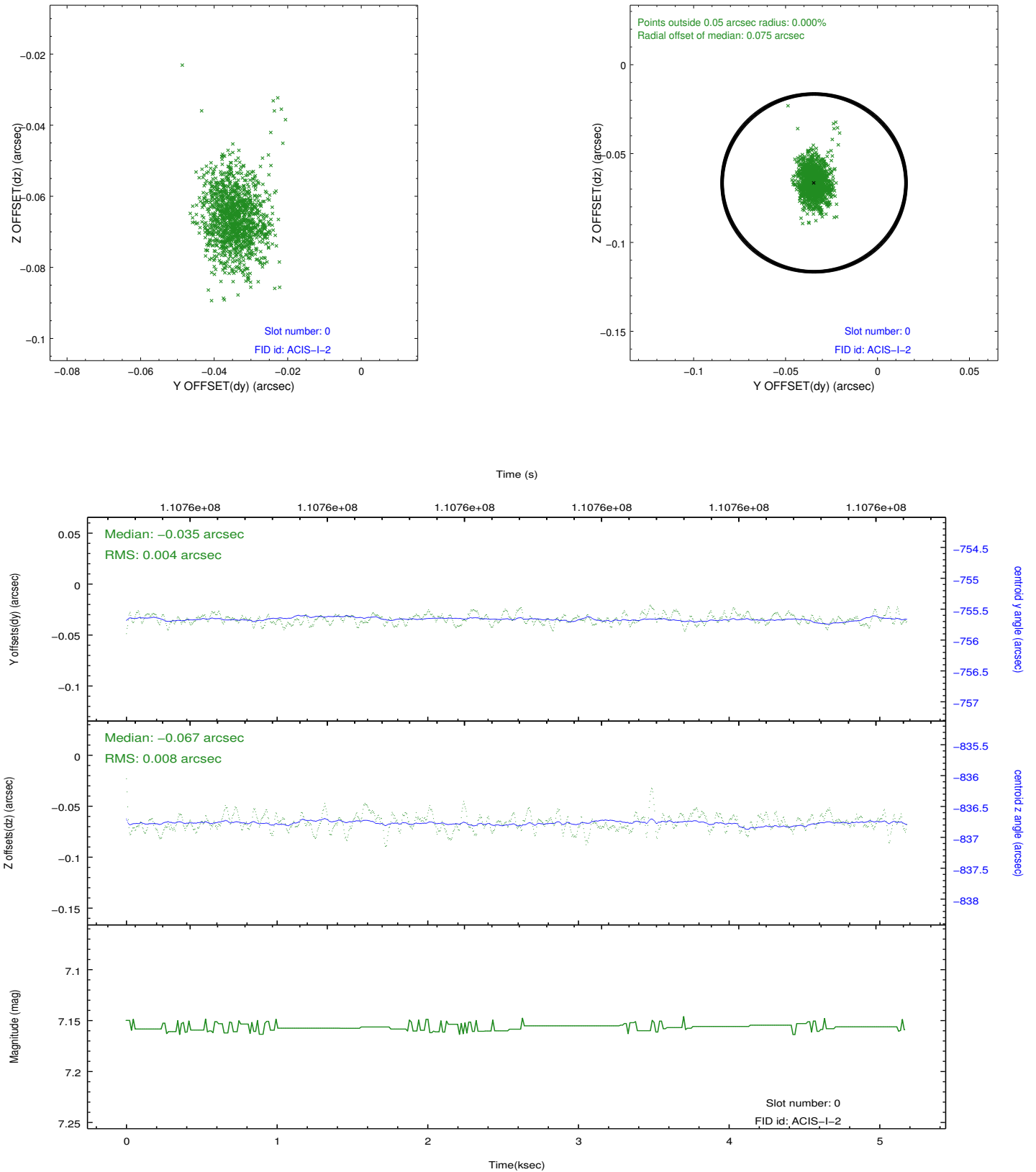


2.4.5 Slot 7

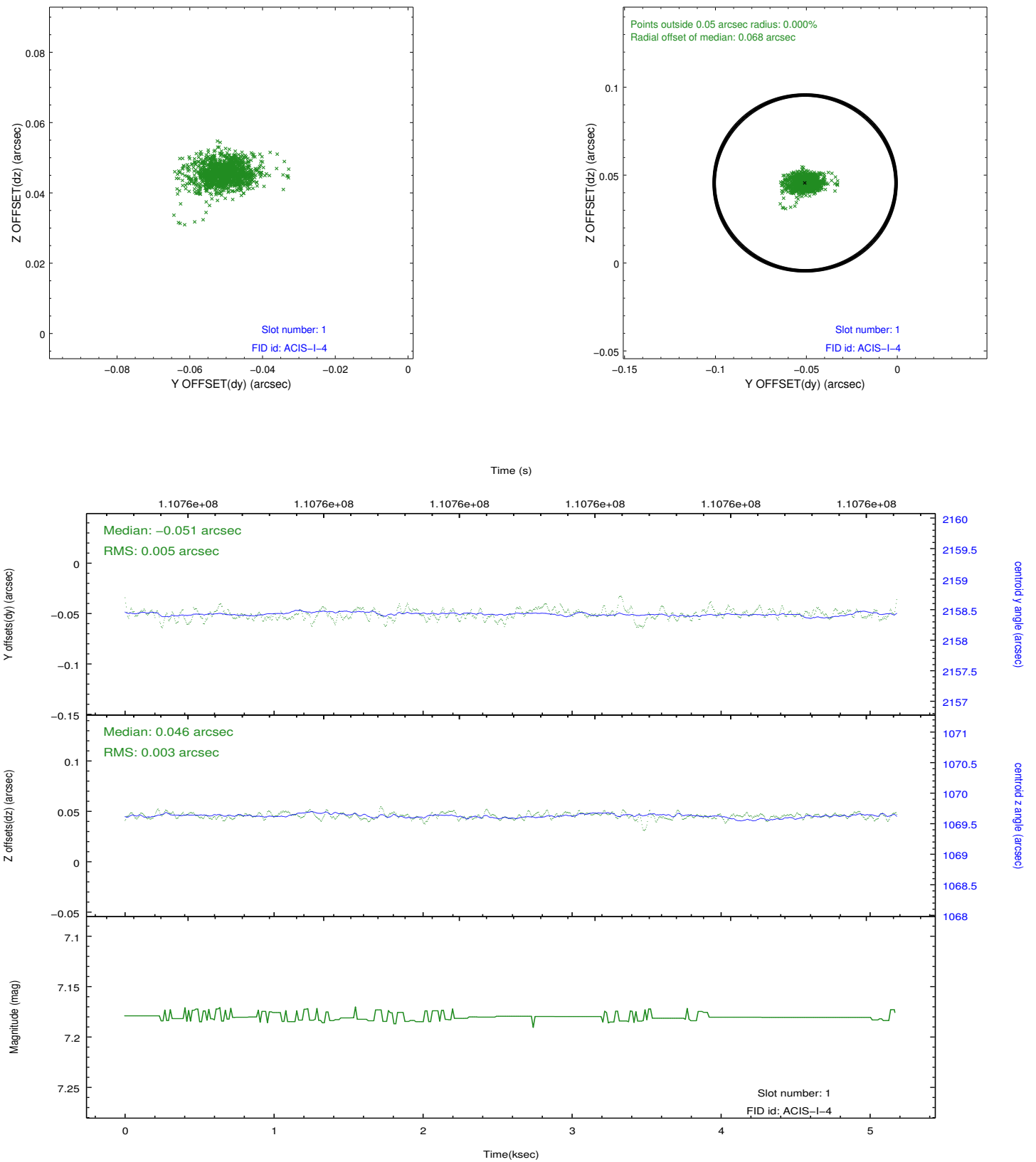


2.5 FID Slots

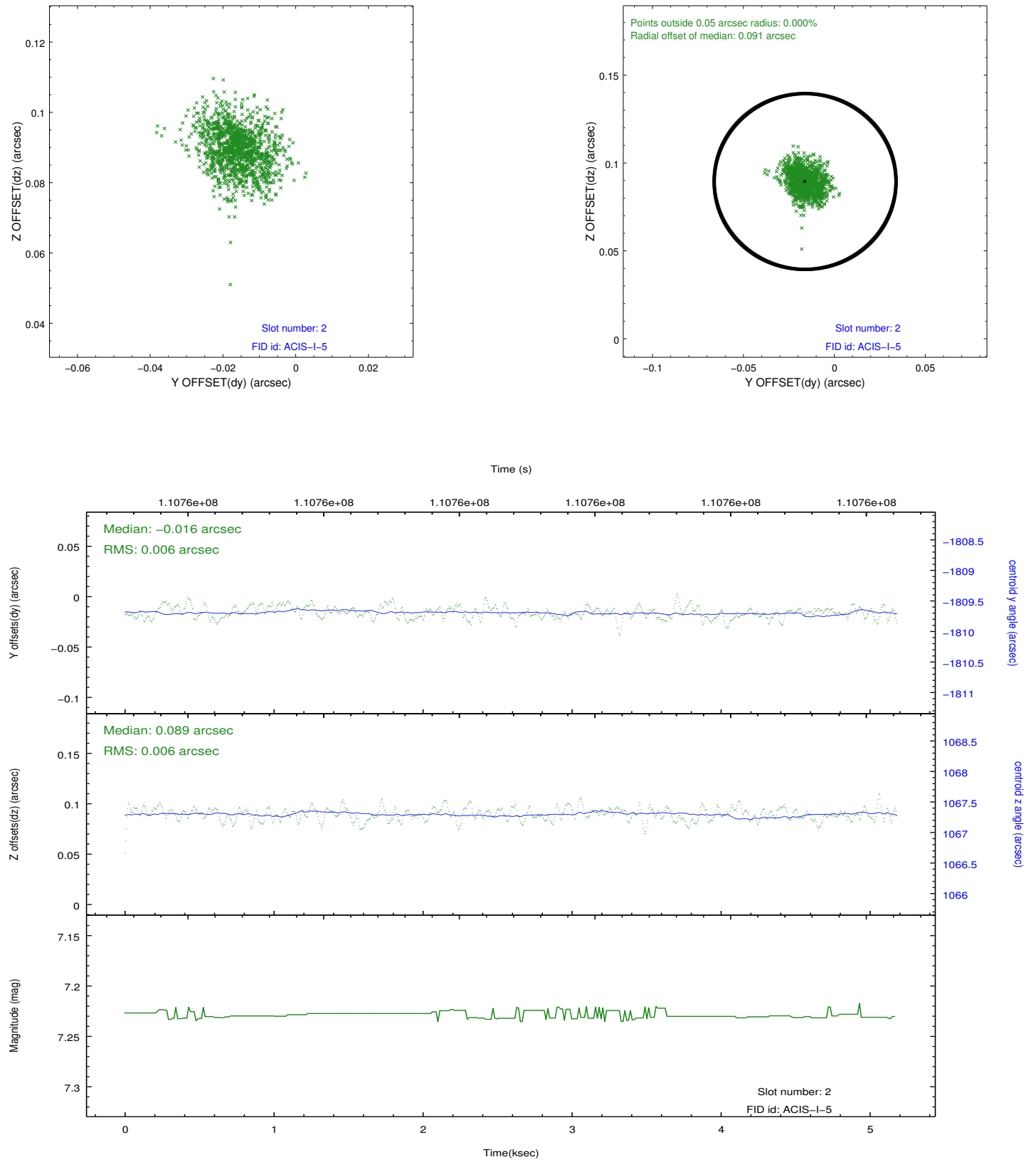
2.5.1 Slot 0



2.5.2 Slot 1



2.5.3 Slot 2



A Summary

A.1 Status

V&V Scientist	Jen Lauer
V&V Date (YYYY-MM-DD)	2012.09.21
V&V Edition	1
V&V Disposition and Status	OK
V&V Charge Time	4.8

A.2 Comments