

V&V Reference Report

L2 ASCDS Version : 10.3

Observation 16258 - L2 Version 1
Chandra X-Ray Center

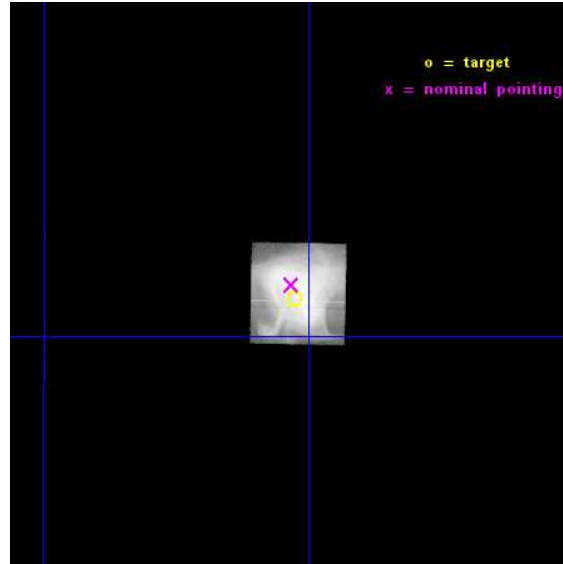
L2 Processing Date : Nov 6 2014

Contents

1	Front	2
2	OBI	3
2.1	OBI	3
2.1.1	Images	3
2.1.2	Parameters	4
2.1.3	Events	4
2.2	Compared Parameters	5
2.3	Aspect	6
2.4	Star Slots	9
2.4.1	Slot 3	9
2.4.2	Slot 4	10
2.4.3	Slot 5	11
2.4.4	Slot 6	12
2.4.5	Slot 7	13
2.5	FID Slots	14
2.5.1	Slot 0	14
2.5.2	Slot 1	15
2.5.3	Slot 2	16
A	Summary	17
A.1	Status	17
A.2	Comments	17

1 Front

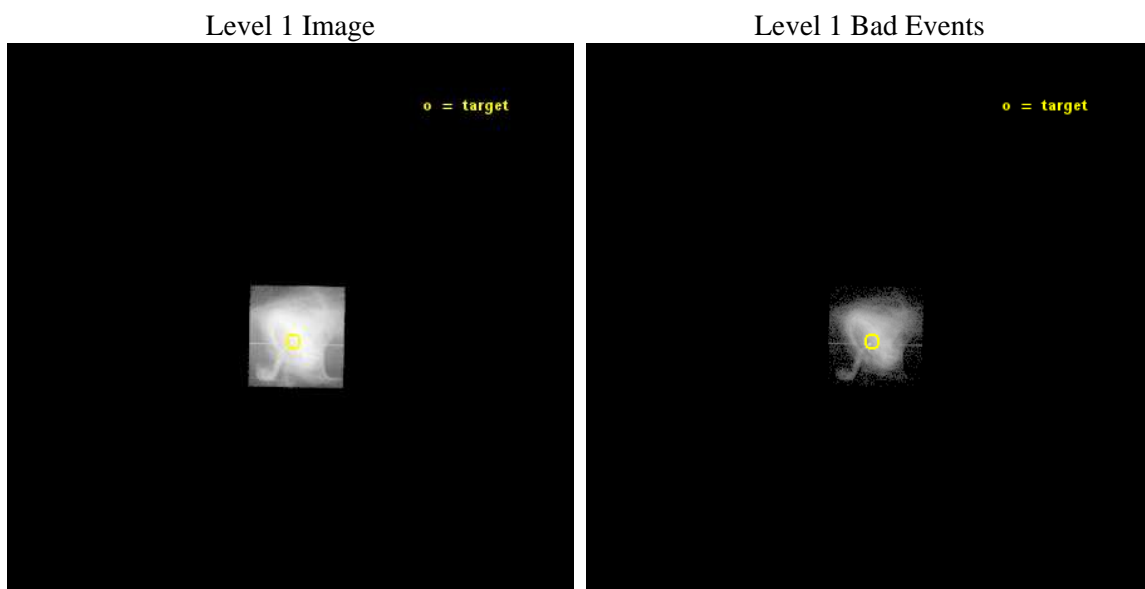
seq_num	502252	Sequence number
obs_id	16258	Observation id
title	Joint Chandra and HST Monitoring and Studies of the Crab Nebula	Pr
observer	Dr. Martin Weisskopf	Principal investigator
object	Crab	Source name
dtcycle	0	
cycle	P	events from which exps? Prim/Second/Both
ra_targ	83.631667	Observer's specified target RA [deg]
dec_targ	22.015667	Observer's specified target Dec [deg]
ra_nom	83.63324387657	Nominal RA [deg]
dec_nom	22.021233271813	Nominal Dec [deg]
roll_nom	91.119694052175	Nominal Roll [deg]
revision	1	Processing version of data
ontime	7796.0301056504	Sum of GTIs [s]
livetime	1342.6153180261	Livetime [s]
ontime7	7796.0301056504	Sum of GTIs [s]
l2events	3496011	Number of level 2 events



2 OBI

2.1 OBI

2.1.1 Images



2.1.2 Parameters

obi_num	1	Obi number	sched_exp_time	10000.000000	[s] Scheduled observation exposure time
ascdsver	10.3	Processing system revision	ontime	7796.0301056504	Sum of GTIs [s]
caldsver	4.6.4	 	ontime7	7796.0301056504	Sum of GTIs [s]
date	2014-11-06T15:21:56	Date and time of file creation	l1events	3884168	Number of level 1 events
revision	1	Processing version of data			

2.1.3 Events

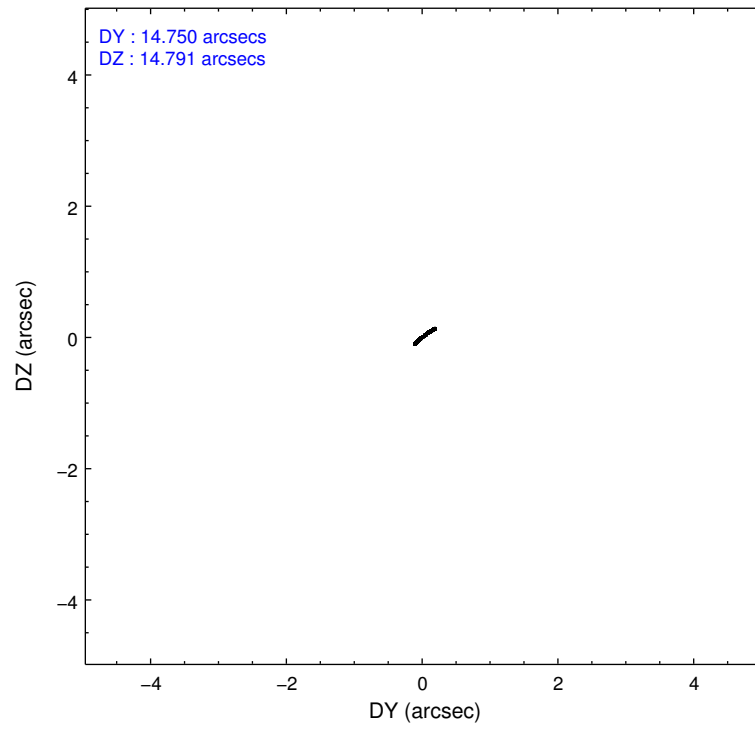
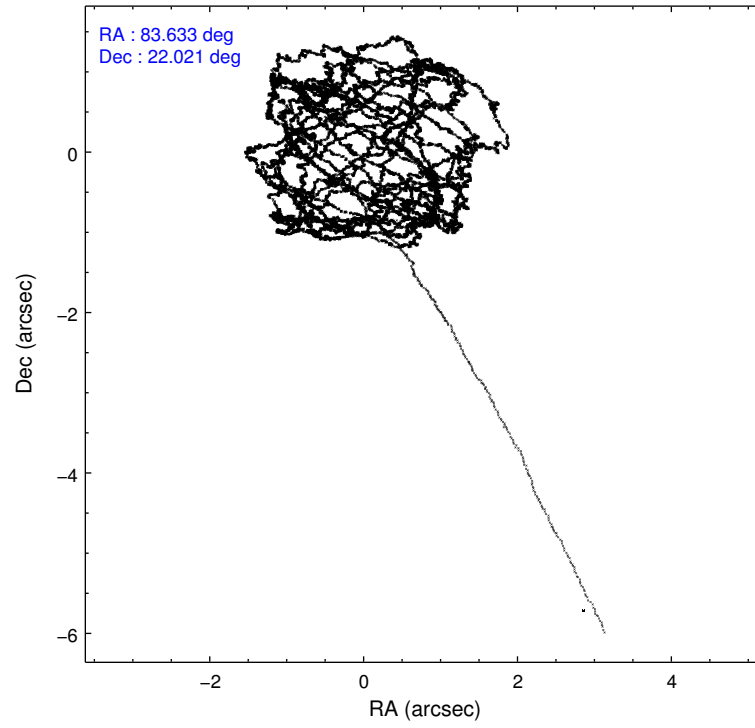
	ccd 7
level 1 events	3884168
rejected events	356915
rejected %	9%

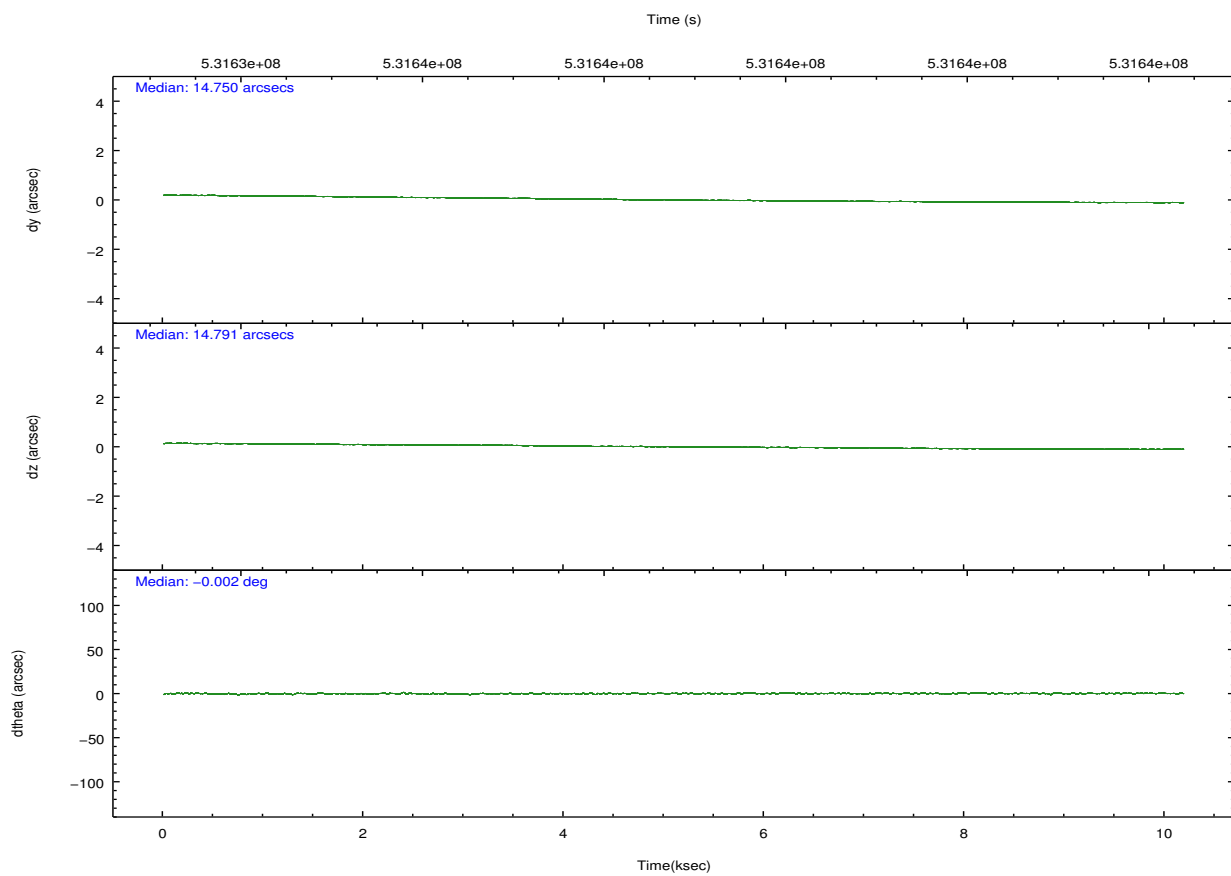
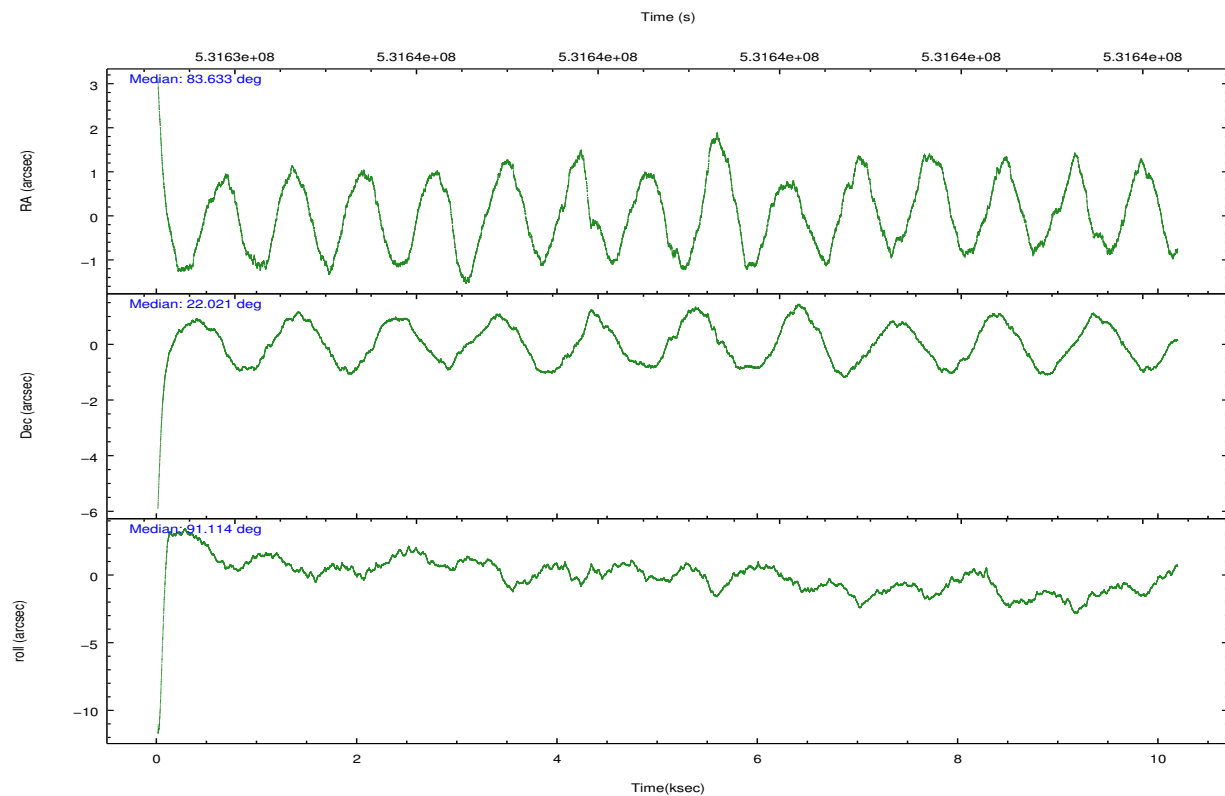
	ccd 7
grade 0 events	766148
	19%
grade 1 events	37435
	0%
grade 2 events	1029786
	26%
grade 3 events	365187
	9%
grade 4 events	362311
	9%
grade 5 events	122398
	3%
grade 6 events	1004330
	25%
grade 7 events	196573
	5%

2.2 Compared Parameters

Parameter	Planned	Actual	Parameter	Planned	Actual
Instrument	ACIS	ACIS	Obspar format version number	7	7
Detector	ACIS-7	ACIS-7	Obspar file type	PREDICTED	ACTUAL
Grating	NONE	NONE	Obspar update status	NONE	UPDATED
Data mode	GRADED	GRADED	Number of optional ACIS chips dropped	0	0
Observation mode	POINTING	POINTING	On-chip summing requested	N	N
[deg] Pointing RA	83.648888	83.63324387656968	Subarray requested	CUSTOM	CUSTOM
[deg] Pointing Dec	21.997932	22.02123327181283	Subarray start row	475	475
[deg] Pointing Roll	90.957212	91.1196940521754	Subarray row count	300	300
[s] Window start time (MET)	530668867.184000	530668867.184000	Alternating exposures requested	N	N
[s] Window stop time (MET)	532396867.184000	532396867.184000	[s] Primary exposure time	0.000000	0.2
[mm] SIM focus pos	-0.684267	-0.6828225247311905			
[mm] SIM defocus	0	0.001444936568705701			
[mm] SIM translation stage pos	-193.592523	-193.5997639048184			
[mm] SIM translation stage offset	3.46	3.467241321810633			
[s] Observation start time (MET)	531633862.184000	531633039.34571			
Observation start date	2014-11-06T04:03:15	2014-11-06T03:50:39			
[s] Observation end time (MET)	531643862.184000	531644828.38386			
Observation end date	2014-11-06T06:49:55	2014-11-06T07:07:08			
Read mode	TIMED	TIMED			

2.3 Aspect



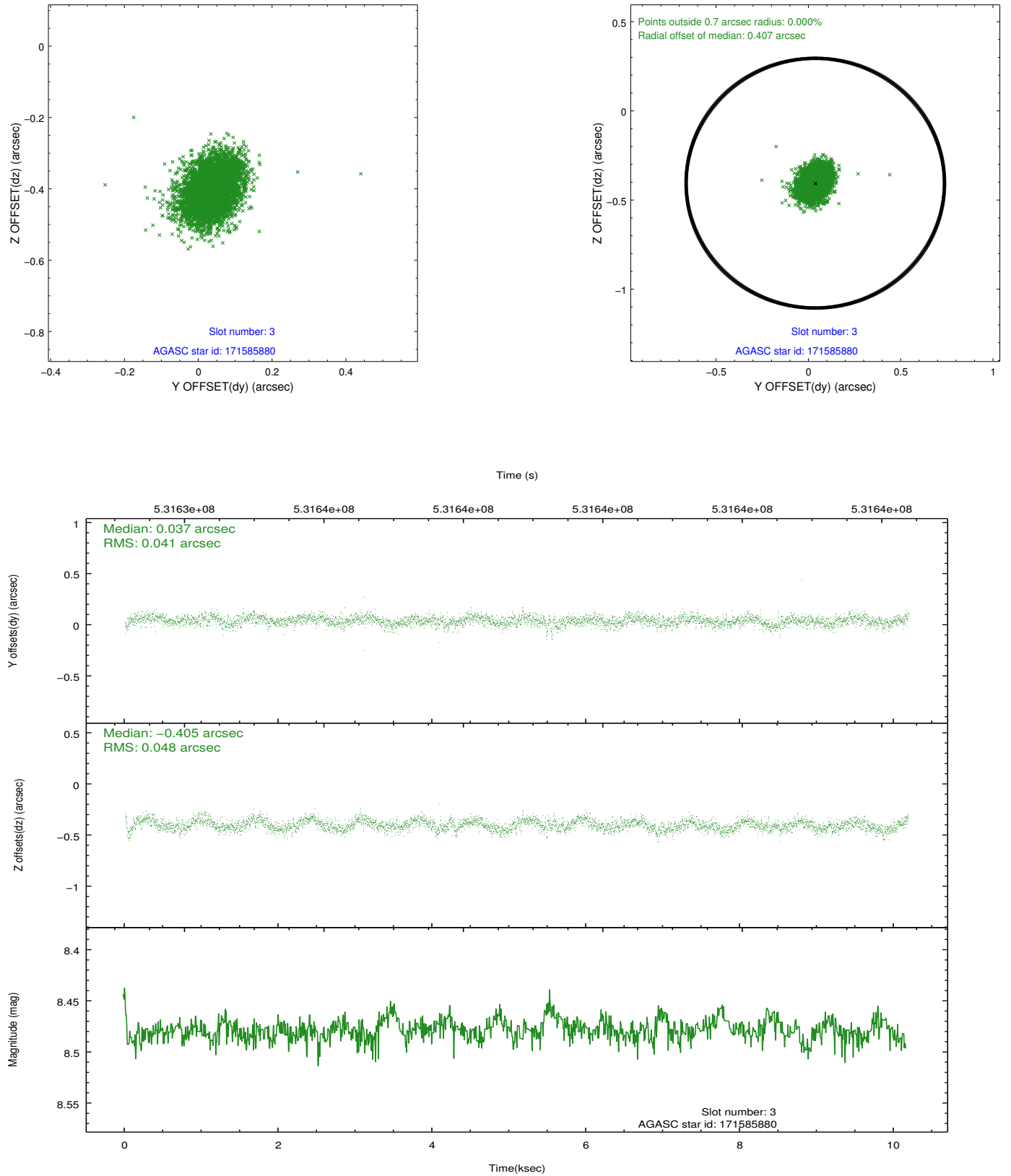


Slot Statistics

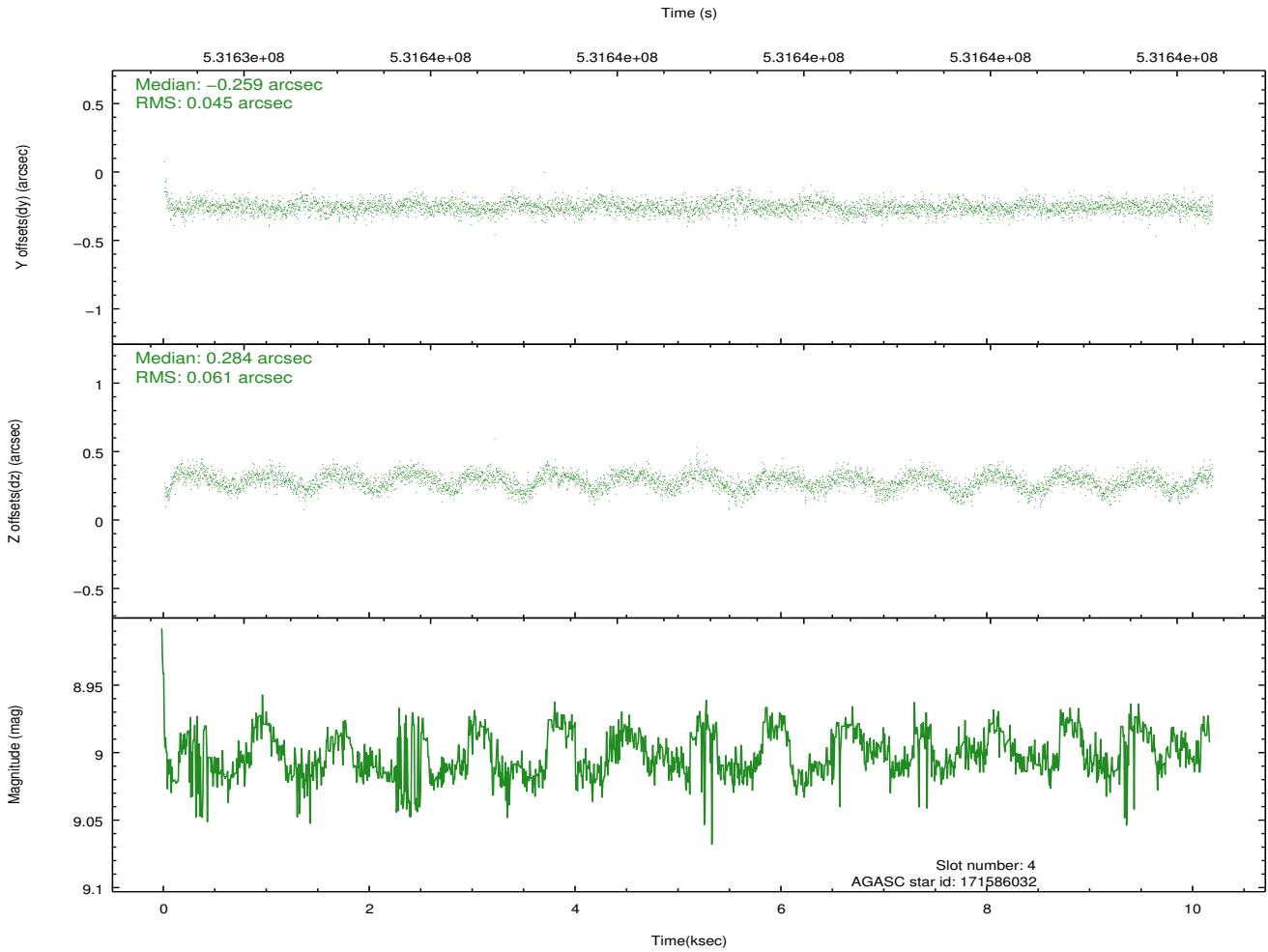
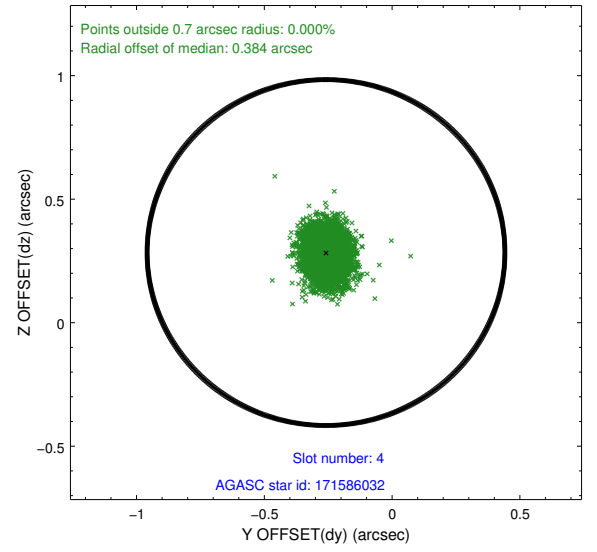
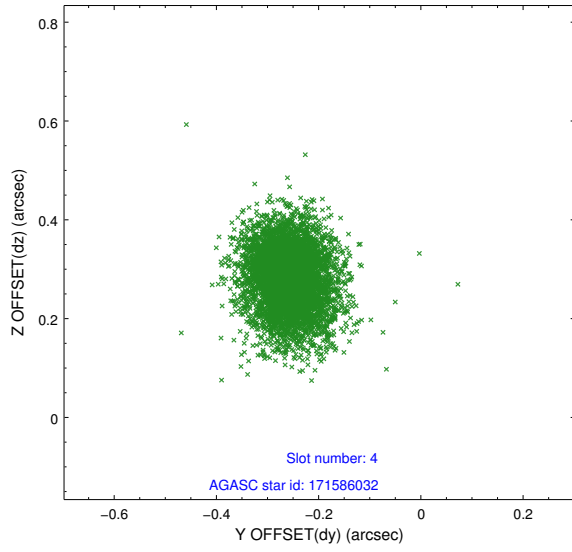
slot	status	used	id	mag	n_pts	med_dy	med_dz	dr1	dr2	ra	dec	mean_y	mean_z
0	FID		ACIS-S-2	7.16	2484	-0.072	0.009	0.007	0.012	0.000000	0.000000	-768.08	-1664.83
1	FID		ACIS-S-4	7.25	2484	0.217	0.032	0.006	0.010	0.000000	0.000000	2145.31	243.08
2	FID		ACIS-S-5	7.26	2483	-0.176	-0.032	0.006	0.011	0.000000	0.000000	-1820.30	237.41
3	GUIDE	used	171585880	8.48	4966	0.037	-0.405	0.066	0.110	83.676260	22.176319	640.95	-102.13
4	GUIDE	used	171586032	9.00	4965	-0.259	0.284	0.079	0.130	83.950197	22.083225	291.49	-1009.68
5	GUIDE	used	171721904	9.23	4963	-0.086	0.279	0.108	0.172	84.272676	22.116922	398.29	-2087.04
6	GUIDE	used	243941560	8.39	4967	0.364	-0.012	0.070	0.113	83.733264	22.568598	2050.04	-314.65
7	GUIDE	used	171597832	9.22	4963	-0.055	-0.145	0.088	0.146	83.183230	21.366702	-2243.20	1598.70

2.4 Star Slots

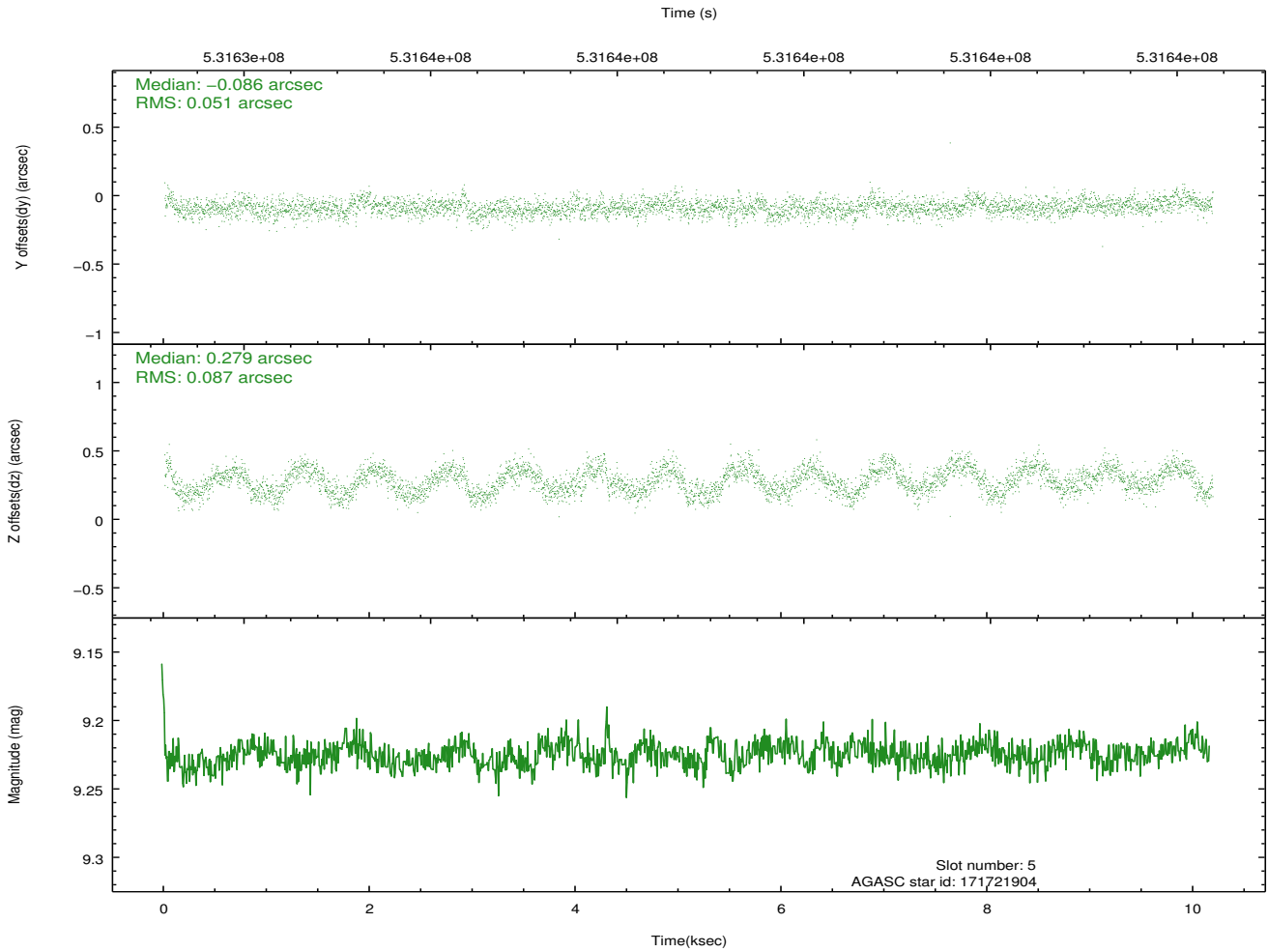
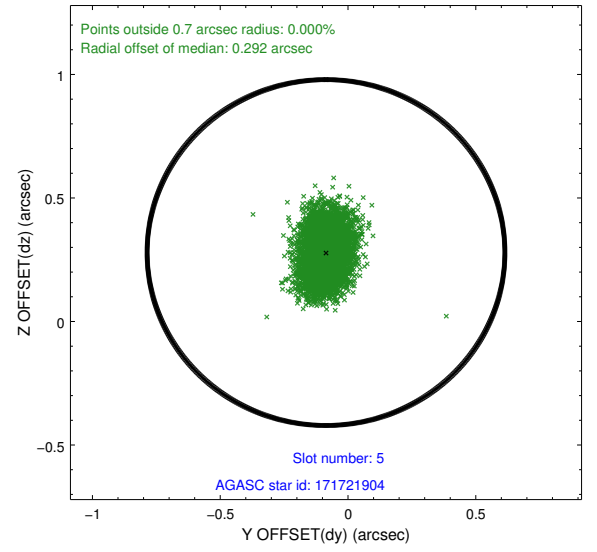
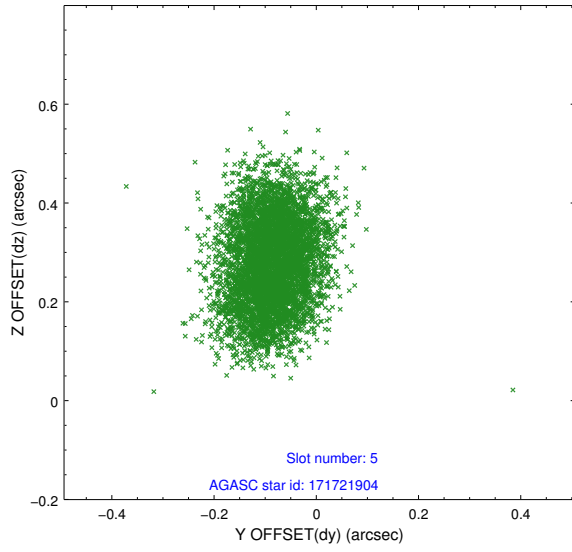
2.4.1 Slot 3



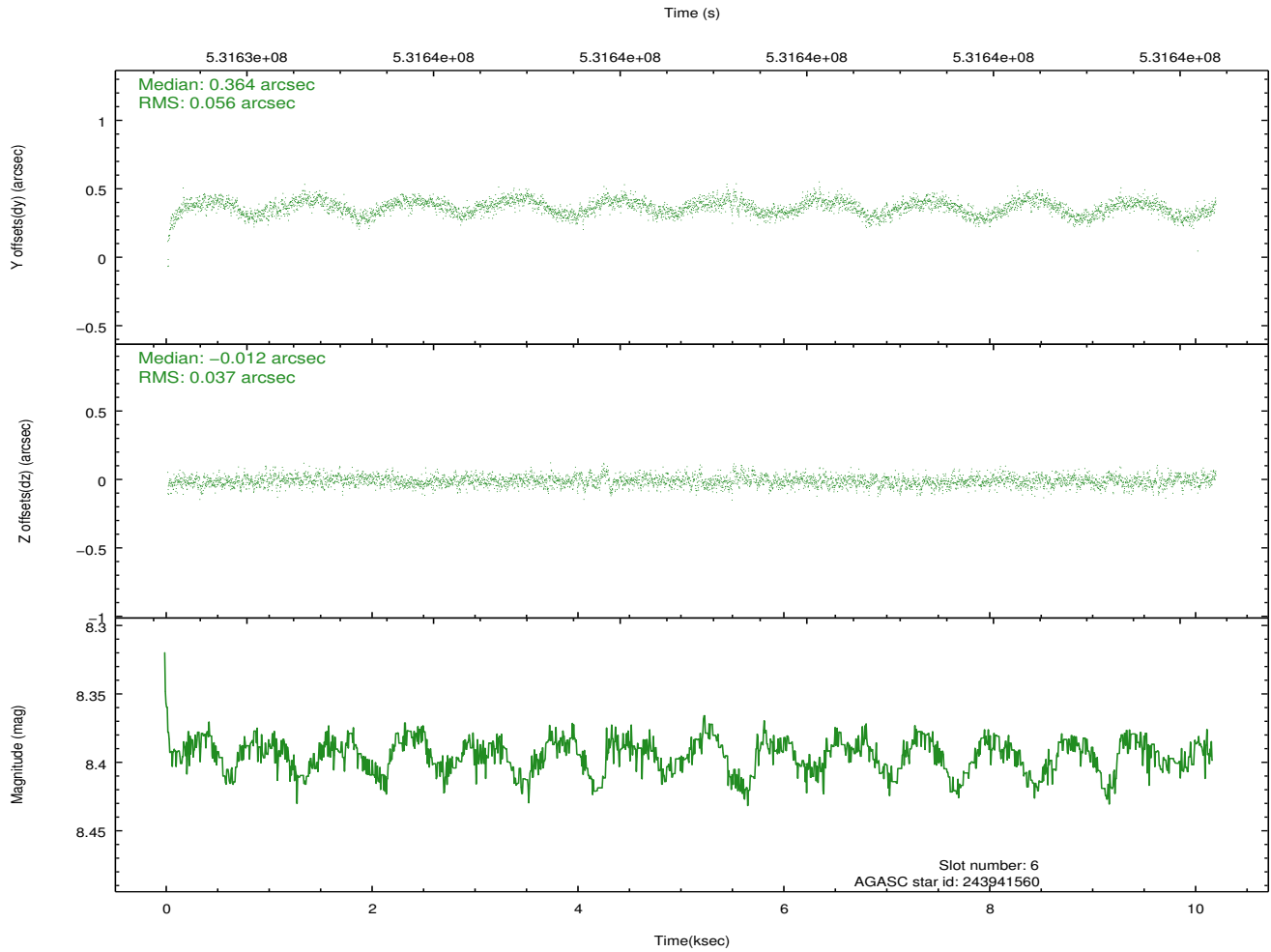
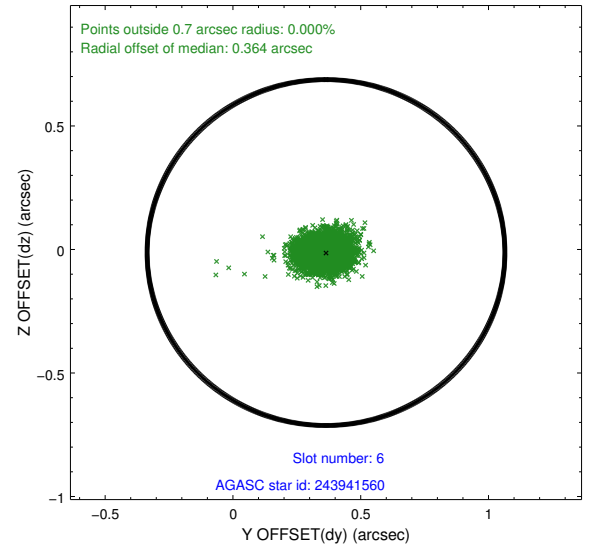
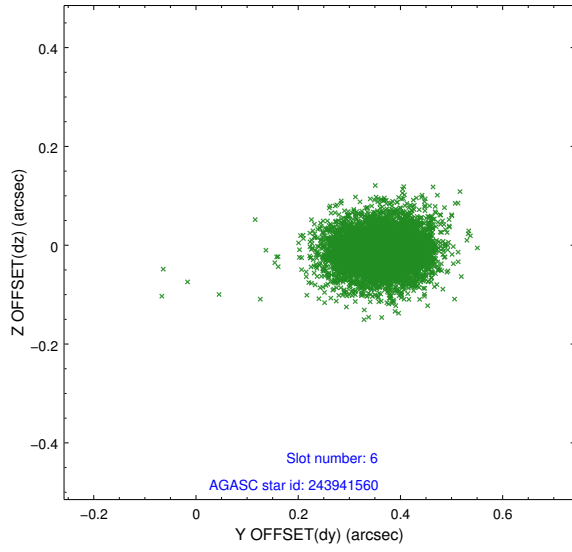
2.4.2 Slot 4



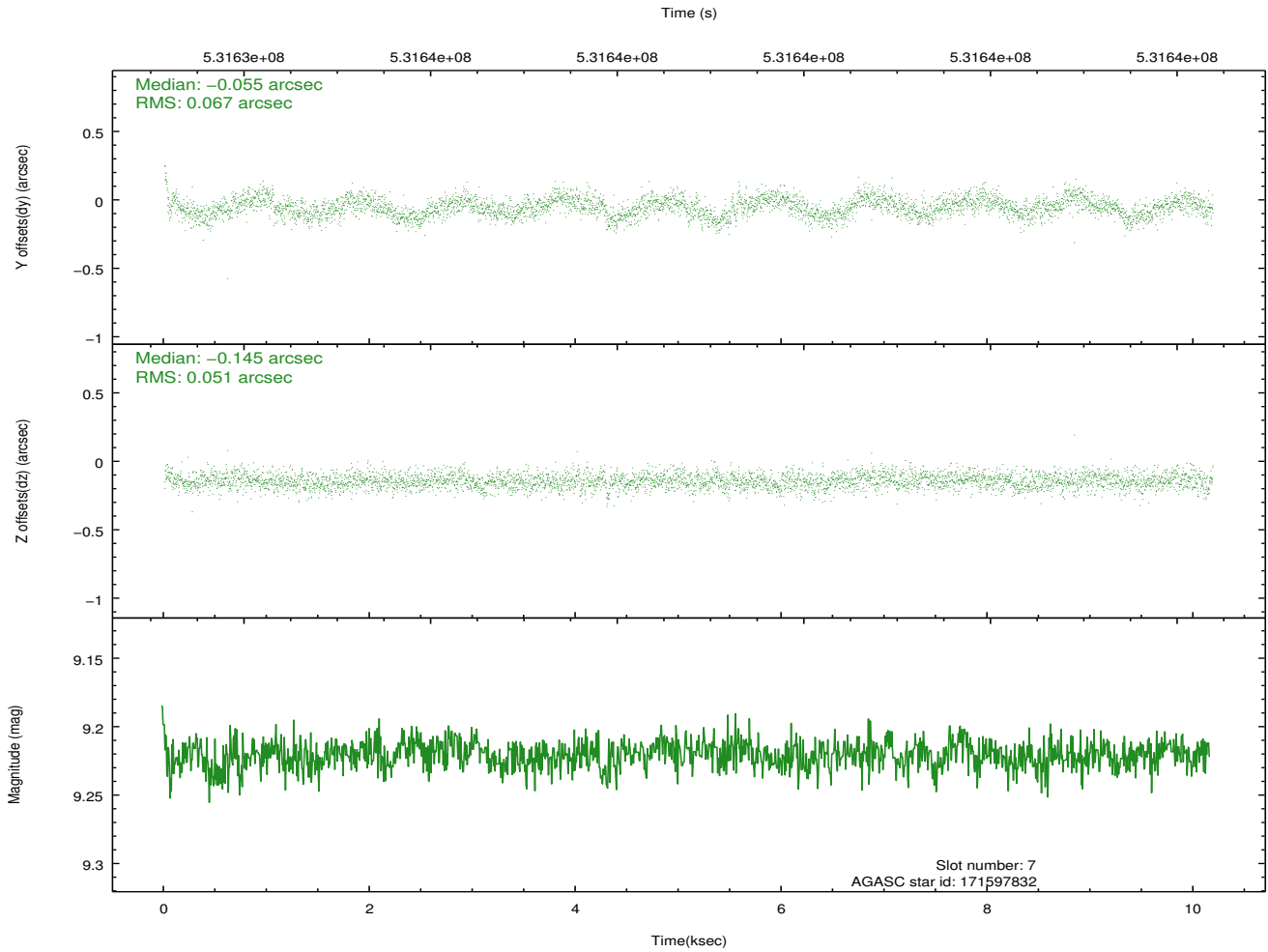
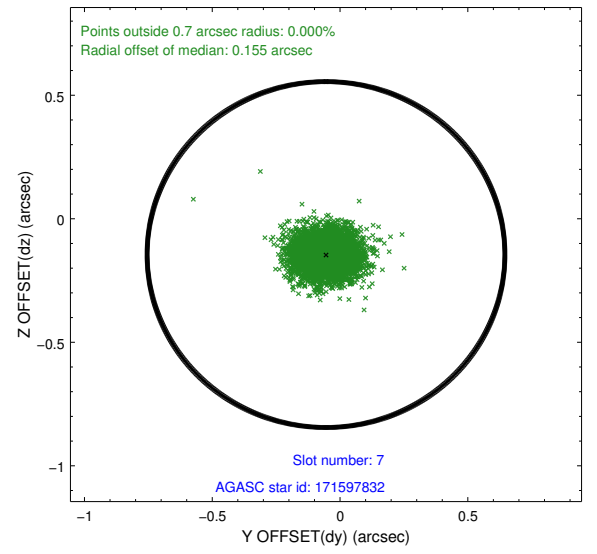
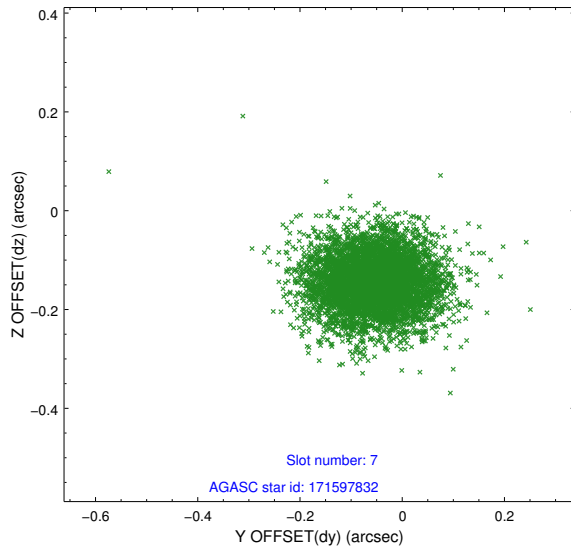
2.4.3 Slot 5



2.4.4 Slot 6

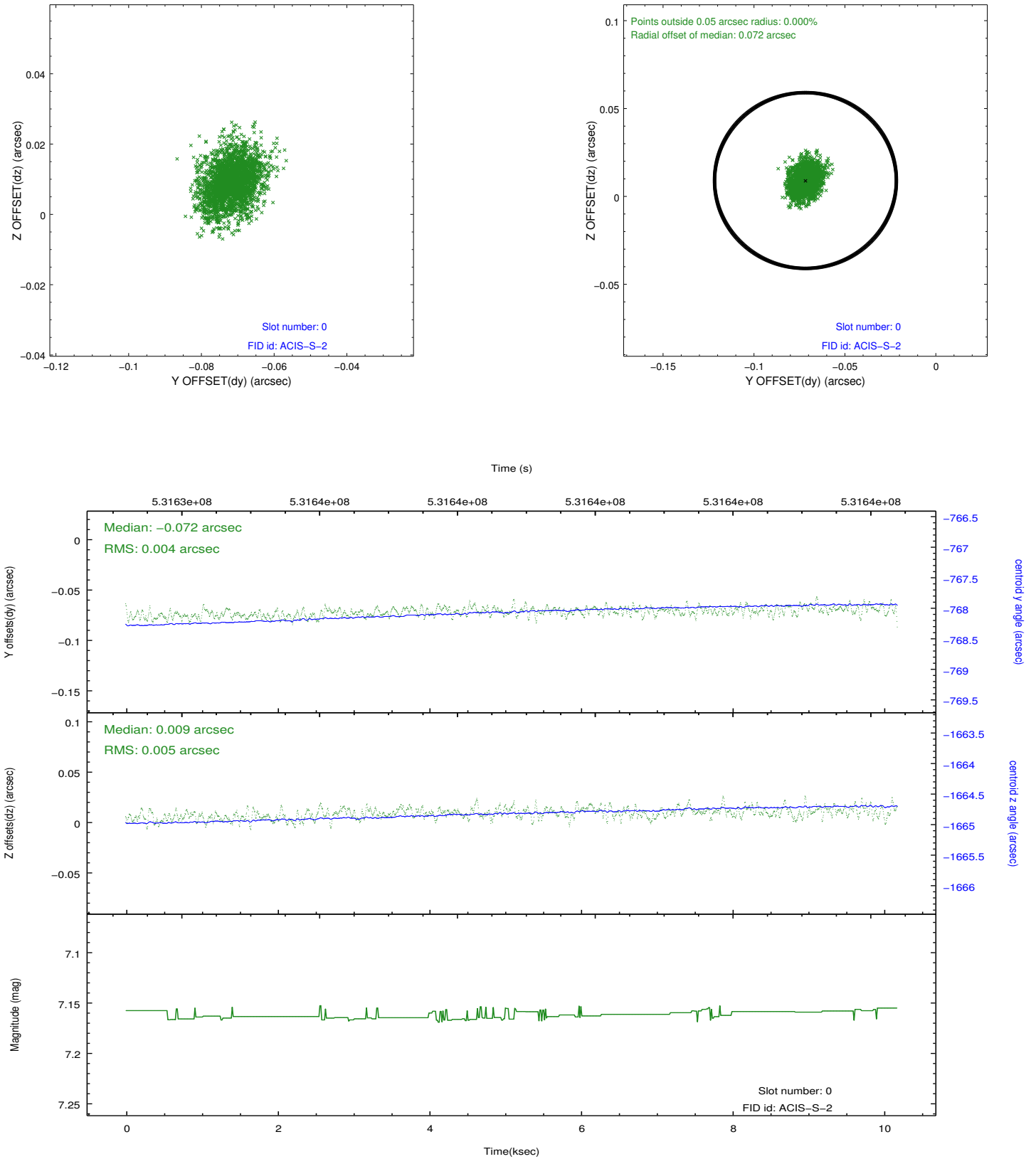


2.4.5 Slot 7

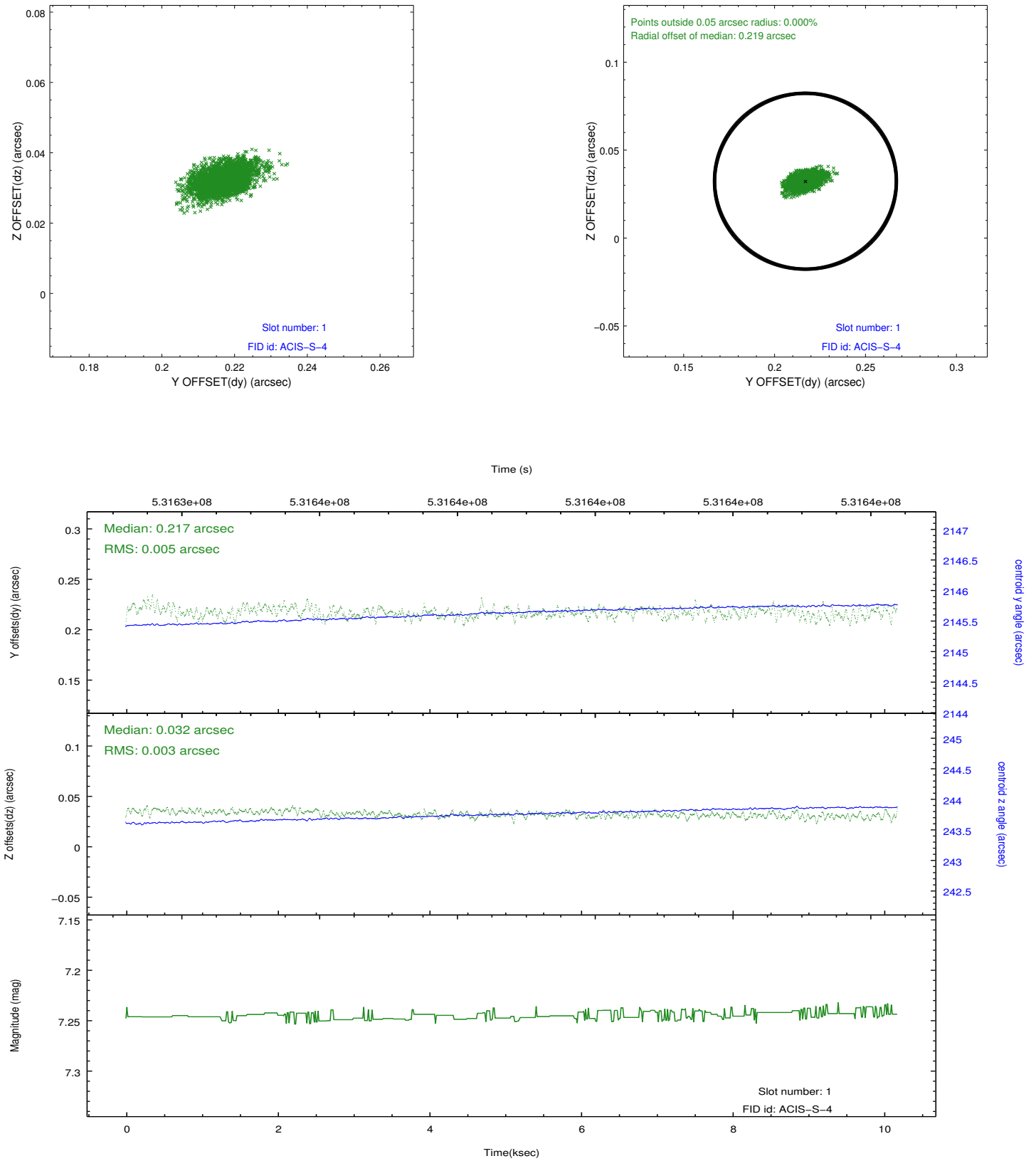


2.5 FID Slots

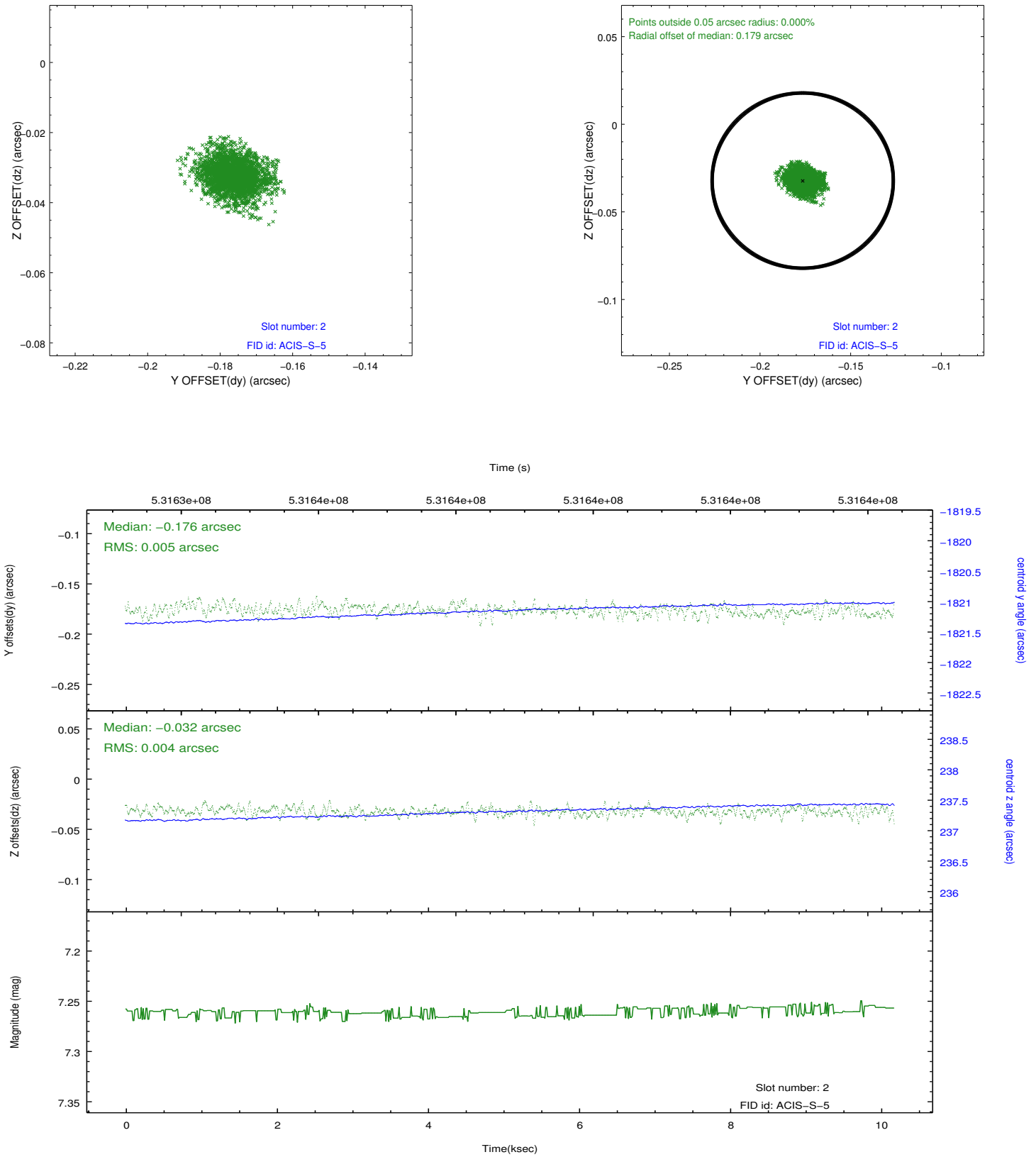
2.5.1 Slot 0



2.5.2 Slot 1



2.5.3 Slot 2



A Summary

A.1 Status

V&V Scientist	Beth Sundheim
V&V Date (YYYY-MM-DD)	2014.11.06
V&V Edition	1
V&V Disposition and Status	OK
V&V Charge Time	10

A.2 Comments

Joint proposal with HST.

Window preference met.

Charge time is set to the scheduled time for this observation, although the ONTIME is significantly less due to telemetry saturation.