

V&V Reference Report

L2 ASCDS Version : 8.1.1

Observation 1448 - L2 Version 3

Chandra X-Ray Center

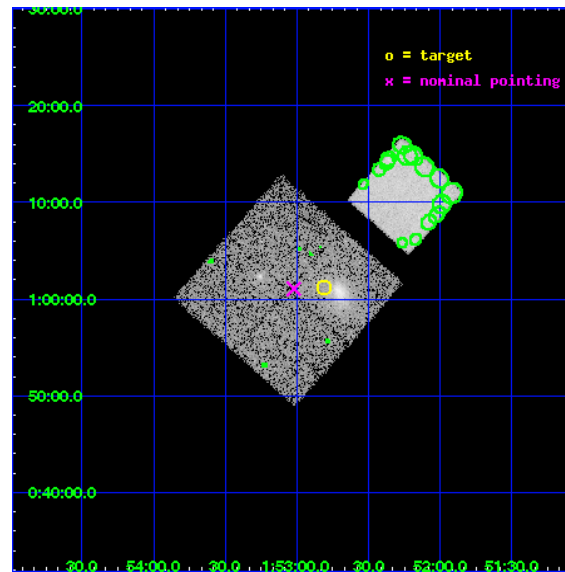
L2 Processing Date : Nov 19 2009

Contents

1	Front	2
2	OBI	3
2.1	OBI	3
2.1.1	Images	3
2.1.2	Bias	3
2.1.3	Parameters	4
2.1.4	Events	4
2.2	Compared Parameters	5
2.3	Aspect	6
2.4	Star Slots	9
2.4.1	Slot 3	9
2.4.2	Slot 4	10
2.4.3	Slot 5	11
2.4.4	Slot 6	12
2.4.5	Slot 7	13
2.5	FID Slots	14
2.5.1	Slot 0	14
2.5.2	Slot 1	15
2.5.3	Slot 2	16
3	Point Sources	17
A	Summary	18
A.1	Status	18
A.2	Comments	18

1 Front

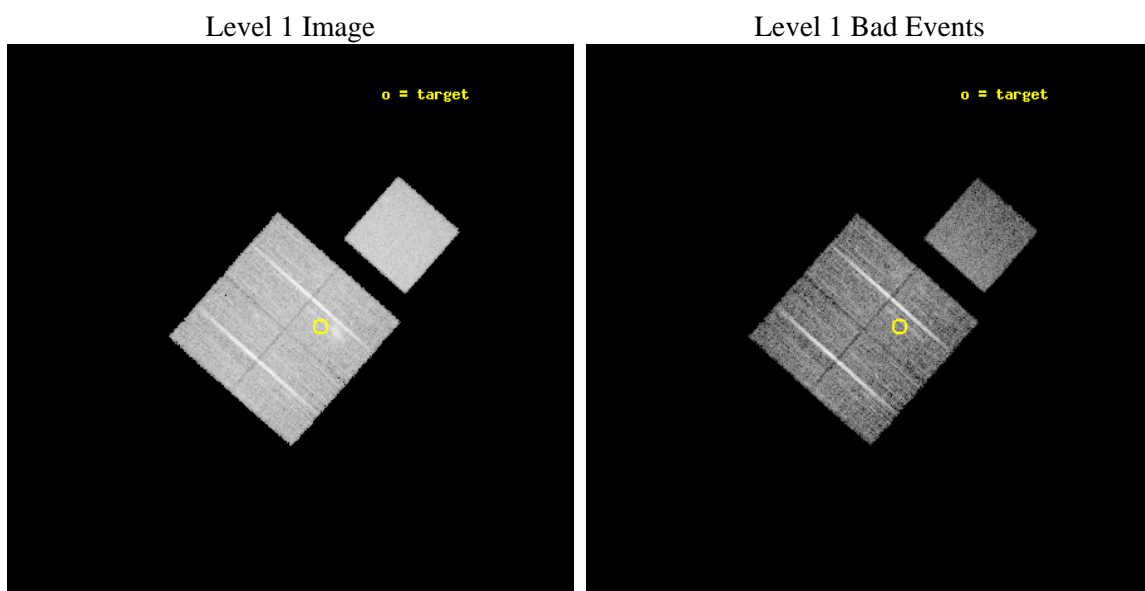
seq_num	800031	Sequence number
obs_id	1448	Observation id
title	DETERMINATION OF H0/Q0	Proposal title
observer	DR. LEON VANSPEYBROECK	Principal investigator
object	A267	Source name
dtcycle	0	
cycle	P	events from which exps? Prim/Second/Both
ra_targ	28.202917	Observer's specified target RA
dec_targ	1.019	Observer's specified target Dec
ra_nom	28.255263623828	Nominal RA
dec_nom	1.0175171502265	Nominal Dec
roll_nom	41.46839378816	Nominal Roll
revision	3	Processing version of data
ontime	7991.9541066736	Sum of GTIs [s]
livetime	7890.7551715979	Livetime [s]
ontime0	7992.0772266686	Sum of GTIs [s]
ontime1	7988.7952264547	Sum of GTIs [s]
ontime2	7991.9951466694	Sum of GTIs [s]
ontime3	7991.9541066736	Sum of GTIs [s]
ontime7	7992.1182666719	Sum of GTIs [s]
l2events	78681	Number of level 2 events



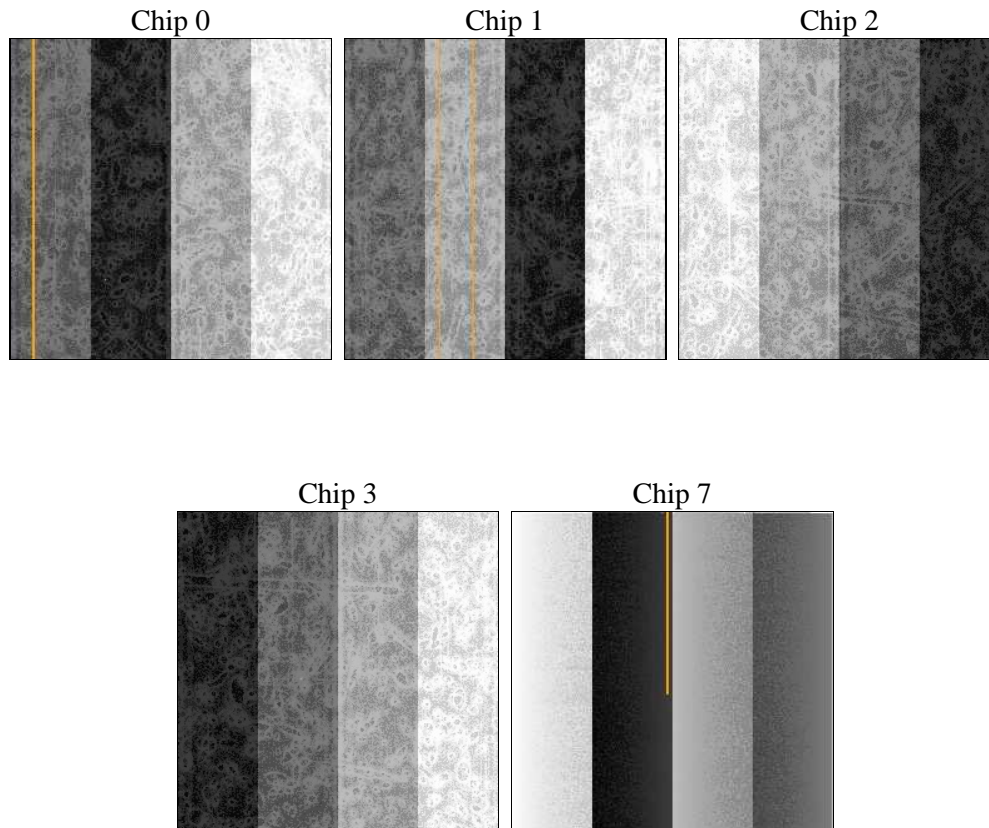
2 OBI

2.1 OBI

2.1.1 Images



2.1.2 Bias



2.1.3 Parameters

obi_num	0	Obi number	sched_exp_time	9340.000000	Scheduled observation exposure time
ascdsver	8.1.1	ASCDS version number	ontime	7991.9541066736	Sum of GTIs [s]
caldsver	4.1.4	 	ontime0	7992.0772266686	Sum of GTIs [s]
date	2009-11-19T21:50:51	Date and time of file creation	ontime1	7988.7952264547	Sum of GTIs [s]
revision	3	Processing version of data	ontime2	7991.9951466694	Sum of GTIs [s]
			ontime3	7991.9541066736	Sum of GTIs [s]
			ontime7	7992.1182666719	Sum of GTIs [s]
			l1events	374022	Number of level 1 events

2.1.4 Events

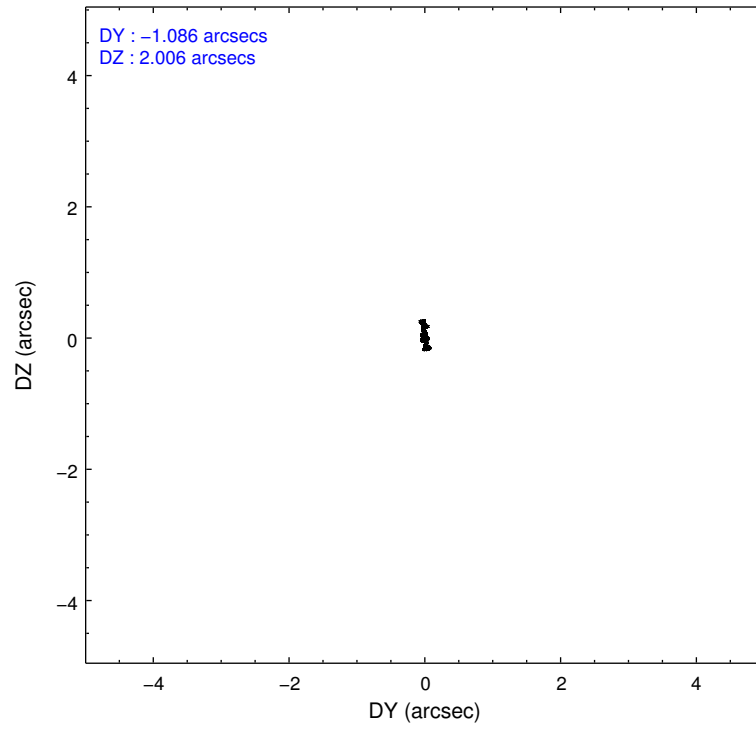
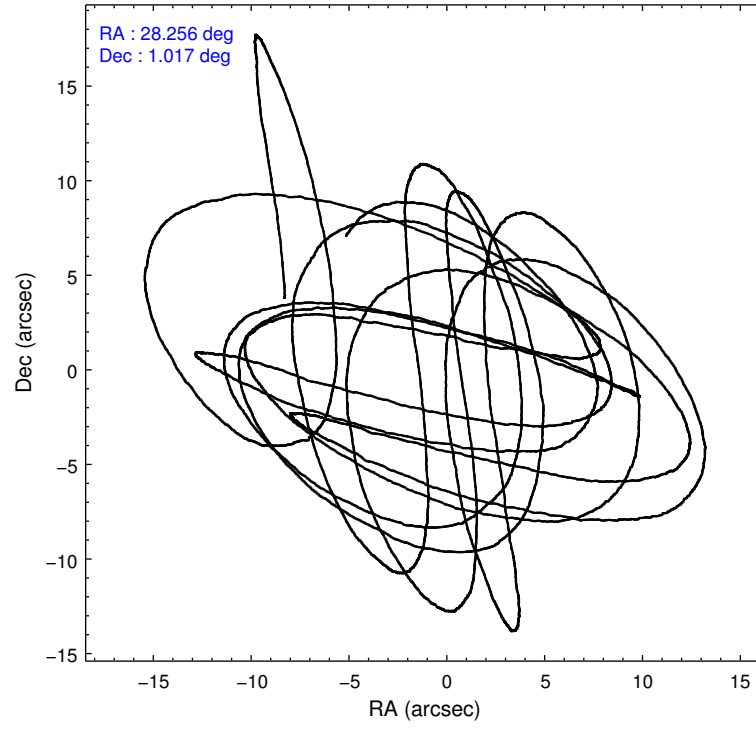
	ccd 0	ccd 1	ccd 2	ccd 3	ccd 7
level 1 events	65937	67717	71480	73734	95154
rejected events	57986	59797	64355	61643	47702
rejected %	87%	88%	90%	83%	50%

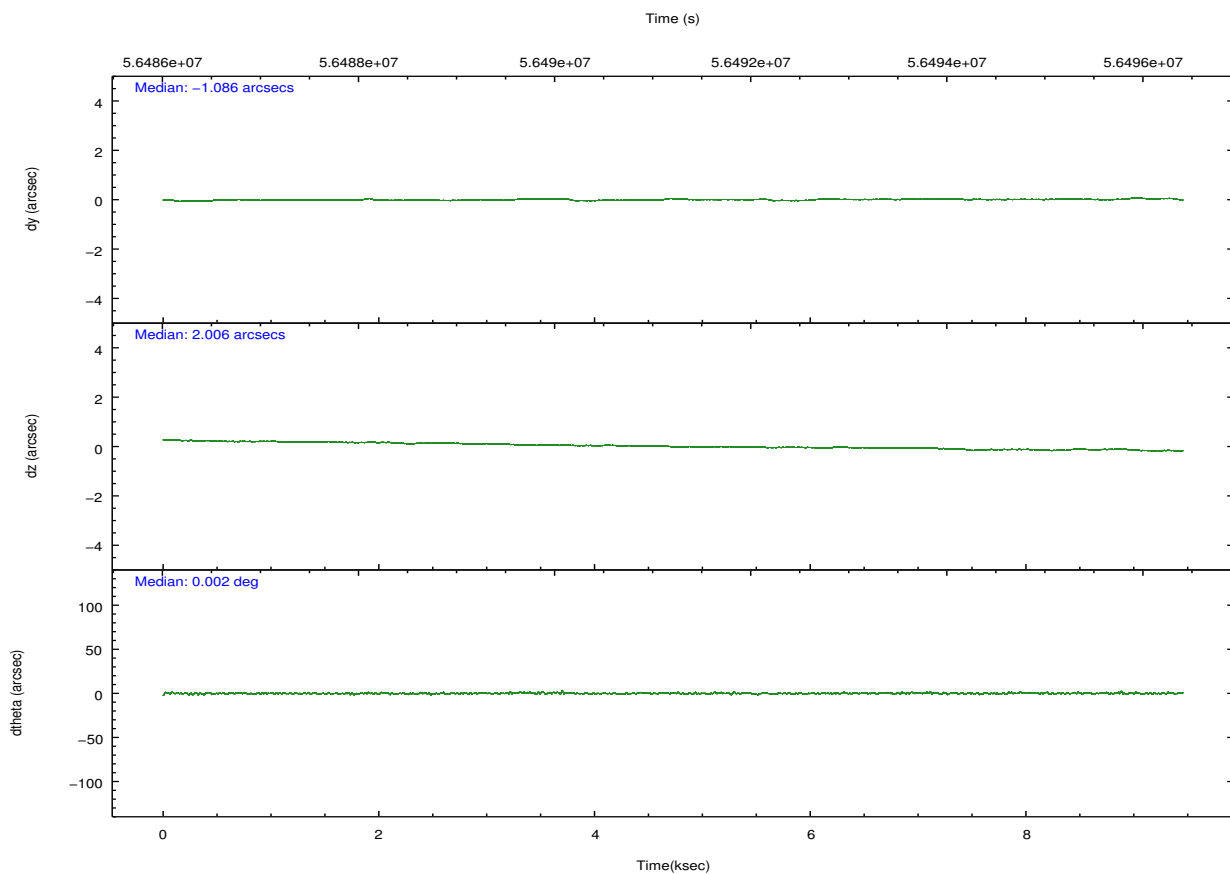
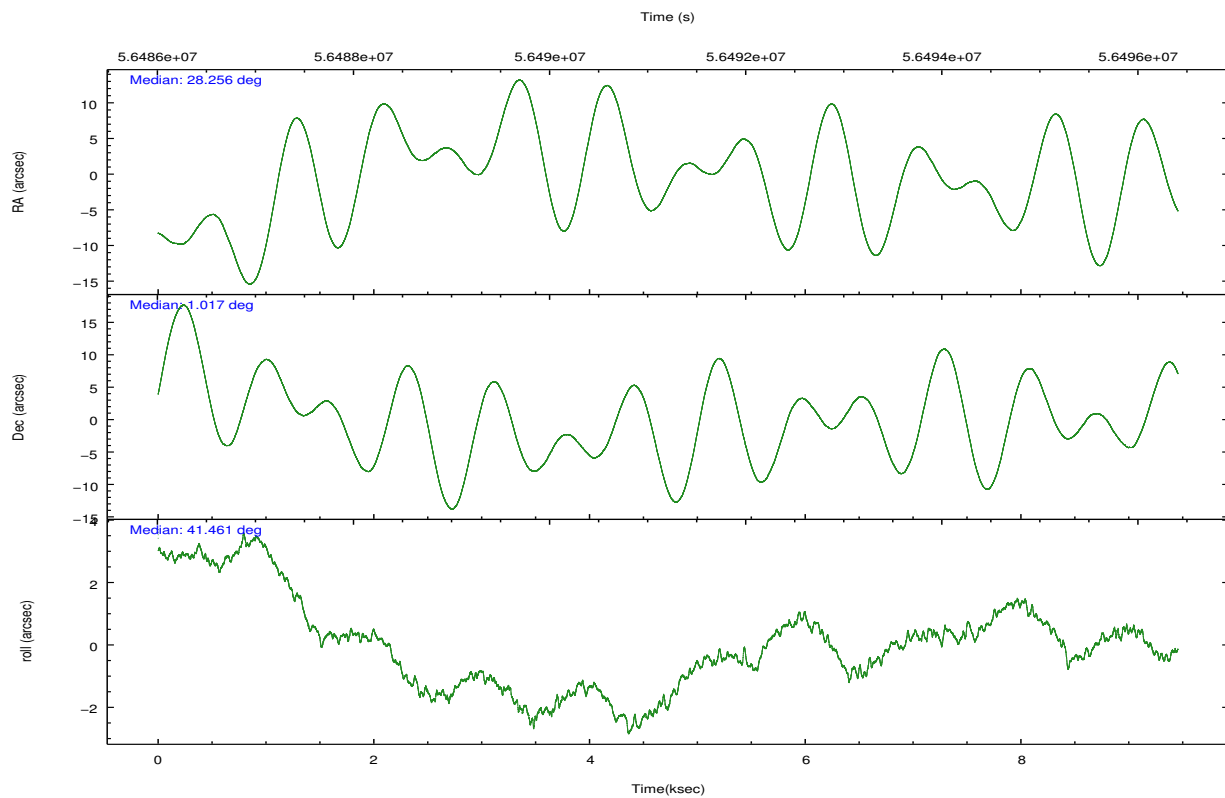
	ccd 0	ccd 1	ccd 2	ccd 3	ccd 7
grade 0 events	2393	1940	1857	5304	3927
	3%	2%	2%	7%	4%
grade 1 events	24	19	15	26	46
	0%	0%	0%	0%	0%
grade 2 events	2973	2964	2841	3991	9443
	4%	4%	3%	5%	9%
grade 3 events	542	625	439	548	2957
	0%	0%	0%	0%	3%
grade 4 events	514	552	419	506	2734
	0%	0%	0%	0%	2%
grade 5 events	1342	1399	1135	1299	4634
	2%	2%	1%	1%	4%
grade 6 events	1533	1842	1573	1743	28408
	2%	2%	2%	2%	29%
grade 7 events	56616	58376	63201	60317	43005
	85%	86%	88%	81%	45%

2.2 Compared Parameters

Parameter	Planned	Actual	Parameter	Planned	Actual
Instrument	ACIS	ACIS	Obspar format version number	6	6
Detector	ACIS-01237	ACIS-01237	Obspar file type	PREDICTED	ACTUAL
Grating	NONE	NONE	Obspar update status	NONE	UPDATED
Data mode	FAINT	FAINT	Number of optional ACIS chips dropped	0	0
Observation mode	POINTING	POINTING	On-chip summing requested	N	N
Pointing RA	28.245767	28.25526362382836	Subarray requested	NONE	NONE
Pointing Dec	0.991396	1.017517150226547	Alternating exposures requested	N	N
Pointing Roll	41.259948	41.46839378816002	Primary exposure time	0.000000	3.2
SIM focus pos (mm)	-0.782348	-0.7809083437167272			
SIM defocus (mm)	0	0.001439871863259334			
SIM translation stage pos (mm)	-233.592463	-233.5874344608287			
SIM translation stage offset (mm)	0	-0.005018542100998502			
Observation start time	56486595.184000	56486479.272354			
Observation start date	1999-10-16T18:42:11	1999-10-16T18:41:19			
Observation end time	56495935.184000	56496690.835221			
Observation end date	1999-10-16T21:17:51	1999-10-16T21:31:30			
Read mode	TIMED	TIMED			

2.3 Aspect



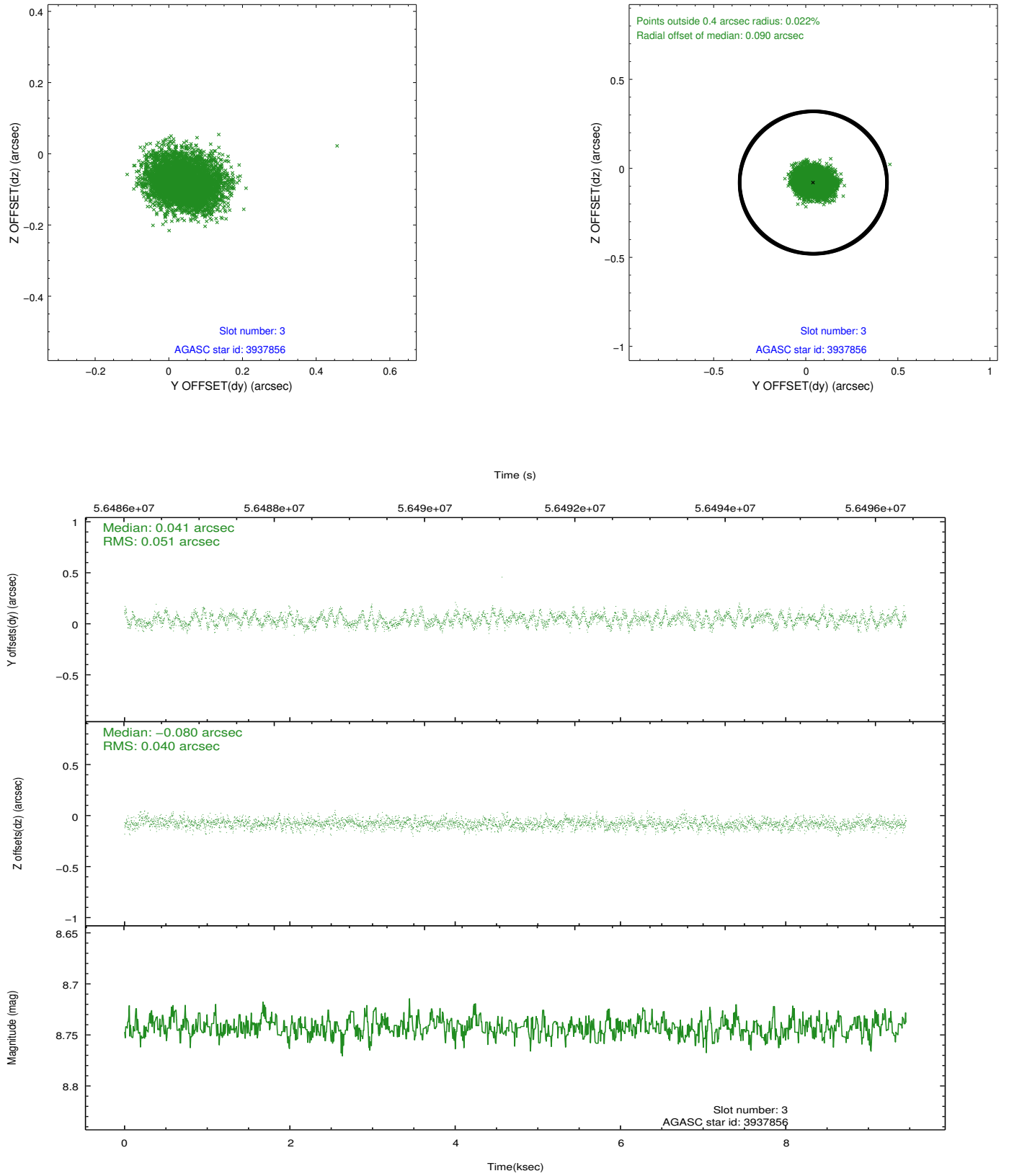


Slot Statistics

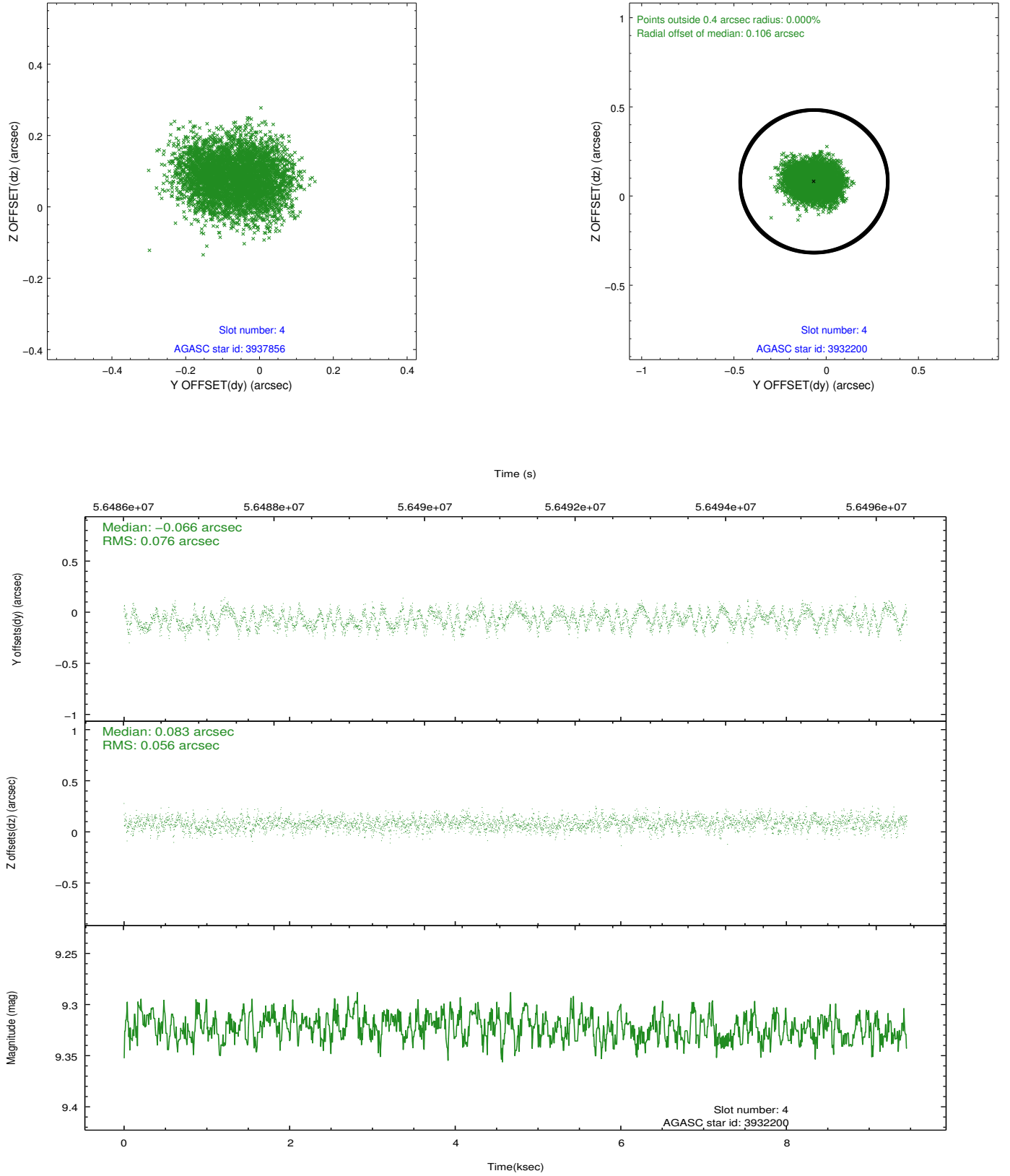
slot	status	id	mag	n_pts	med_dy	med_dz	dr1	dr2	ra	dec	mean_y	mean_z
0	FID	ACIS-I-2	7.21	4613	-0.046	0.051	0.010	0.018	0.000000	0.000000	-753.28	-831.55
1	FID	ACIS-I-4	7.22	4614	0.095	0.020	0.007	0.014	0.000000	0.000000	2160.95	1074.29
2	FID	ACIS-I-5	7.23	4614	-0.151	-0.002	0.009	0.016	0.000000	0.000000	-1806.82	1072.63
3	GUIDE	3937856	8.74	4613	0.041	-0.080	0.070	0.110	27.502239	0.986318	-2024.42	1753.48
4	GUIDE	3932200	9.32	4613	-0.066	0.083	0.104	0.158	28.826564	0.608712	662.63	-2411.45
5	GUIDE	3939408	9.59	4612	0.013	0.022	0.098	0.156	28.595614	1.577682	2337.97	758.57
6	GUIDE	3933704	9.71	4611	-0.030	0.011	0.108	0.173	28.709871	0.783788	763.28	-1660.88
7	GUIDE	3939256	9.95	4610	0.040	-0.034	0.110	0.175	28.955841	0.906301	1719.56	-1913.55

2.4 Star Slots

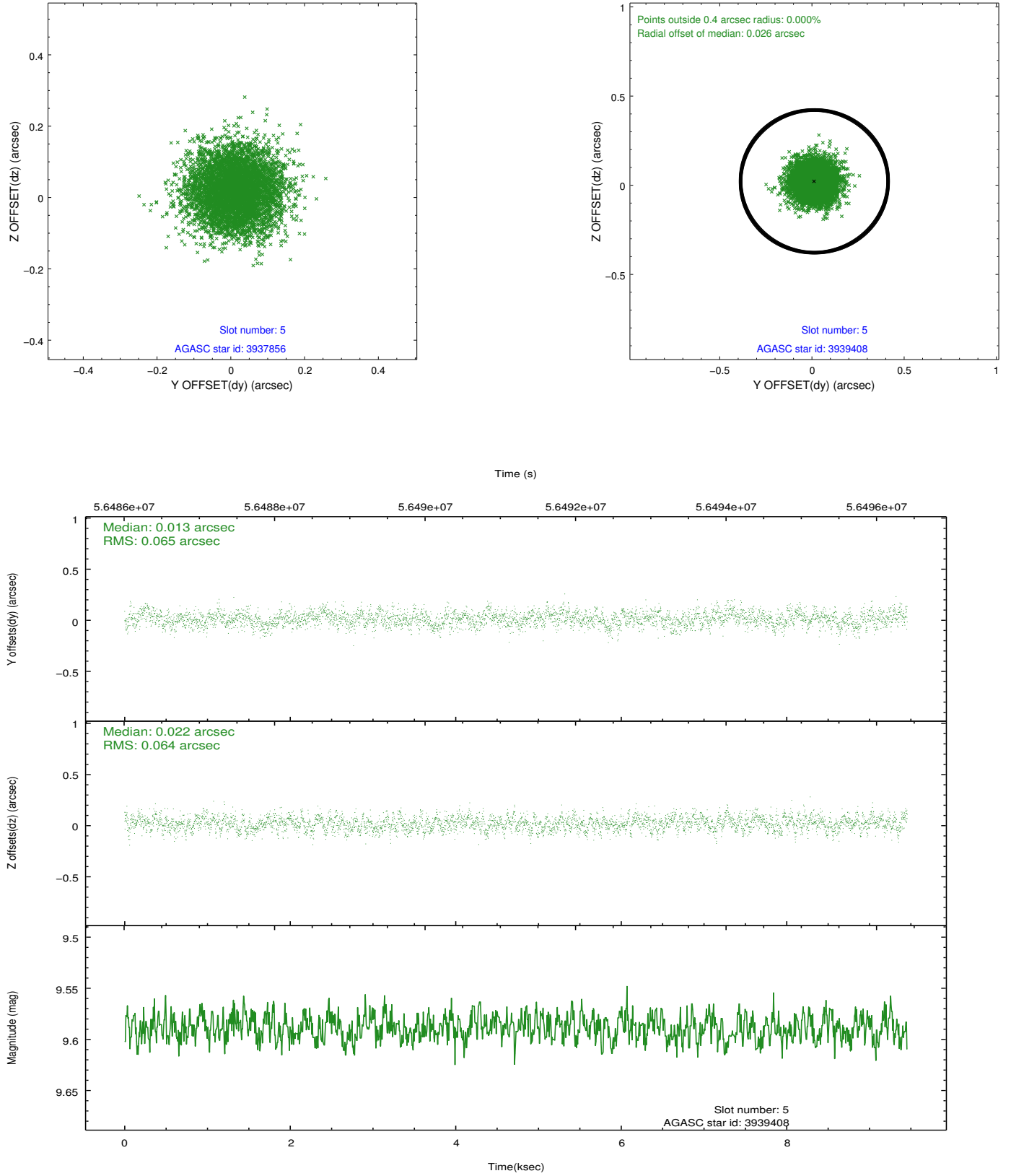
2.4.1 Slot 3



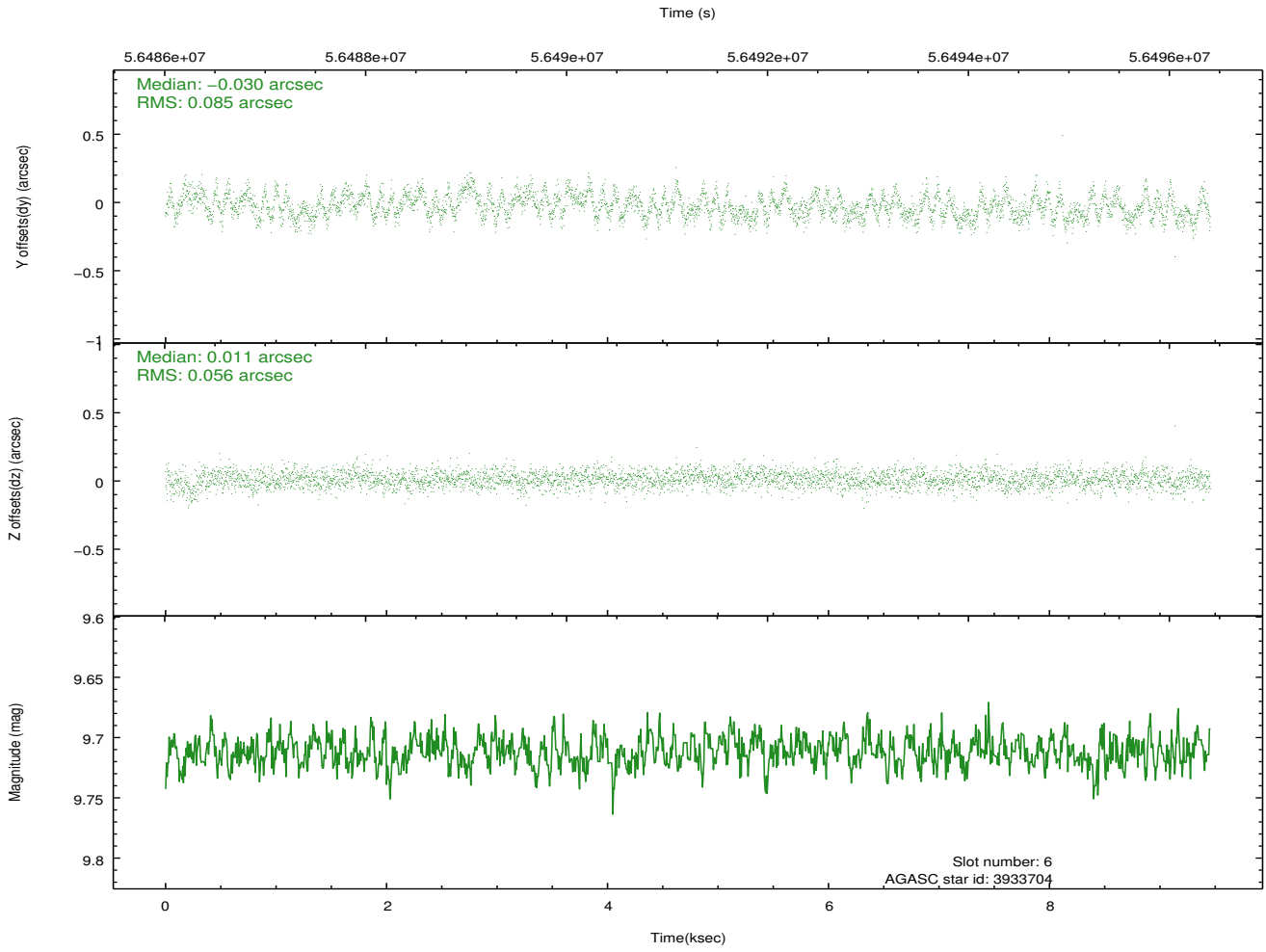
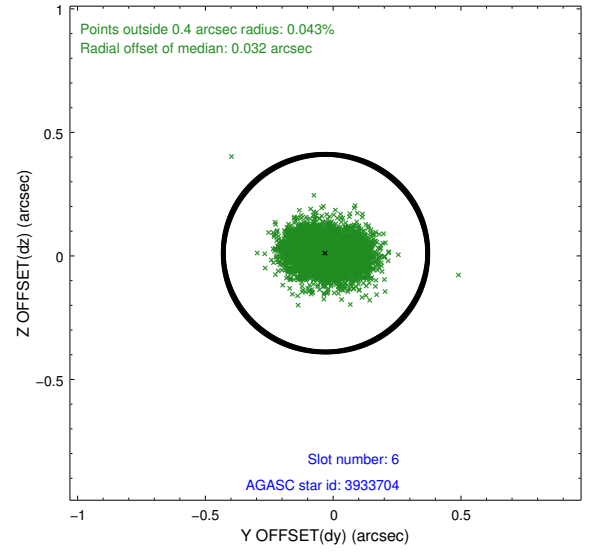
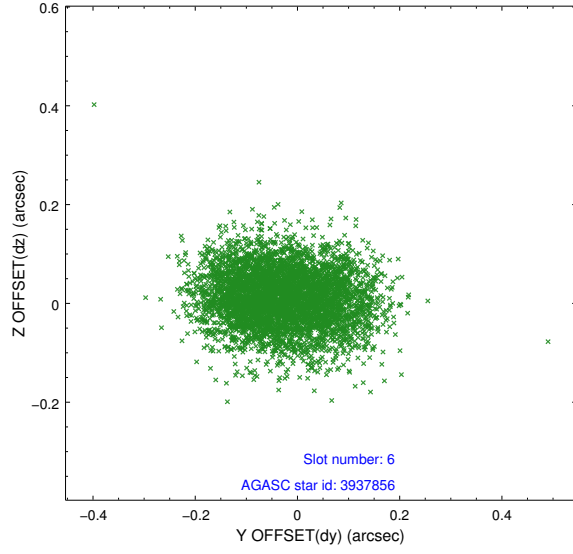
2.4.2 Slot 4



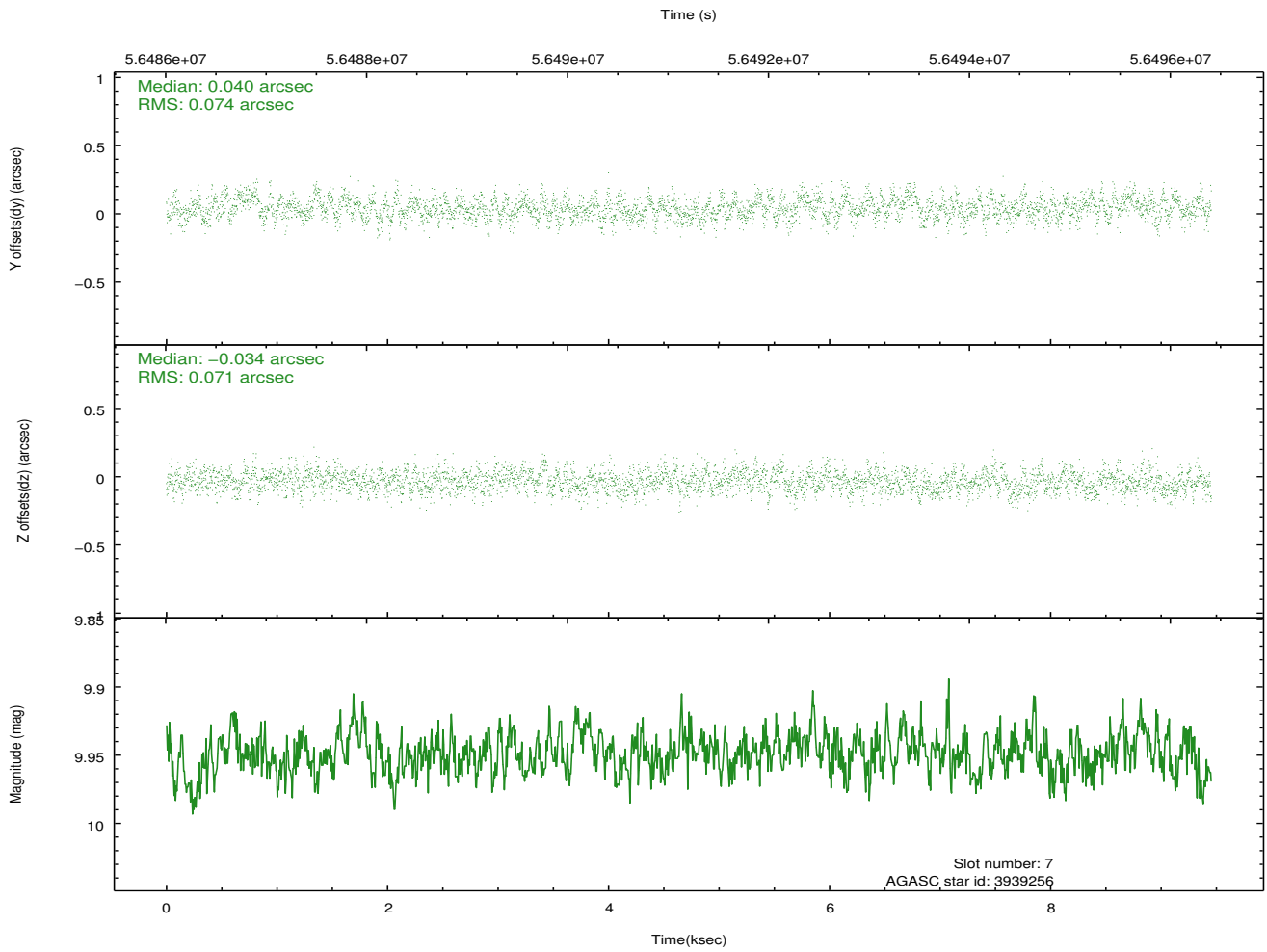
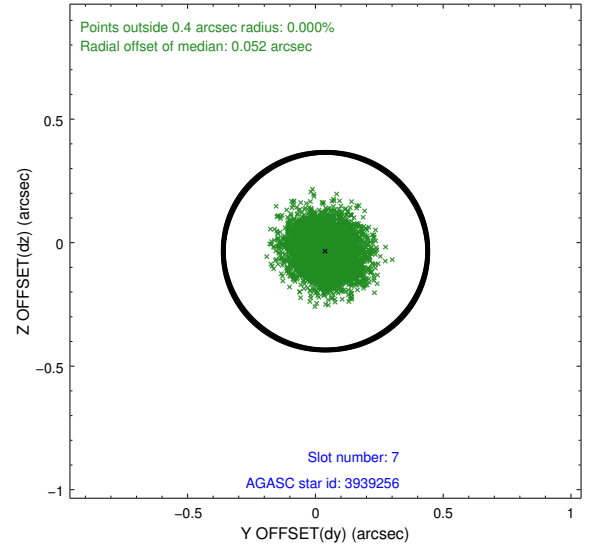
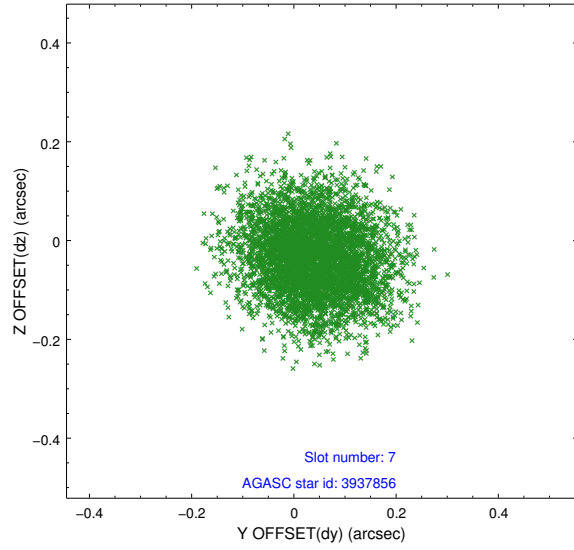
2.4.3 Slot 5



2.4.4 Slot 6

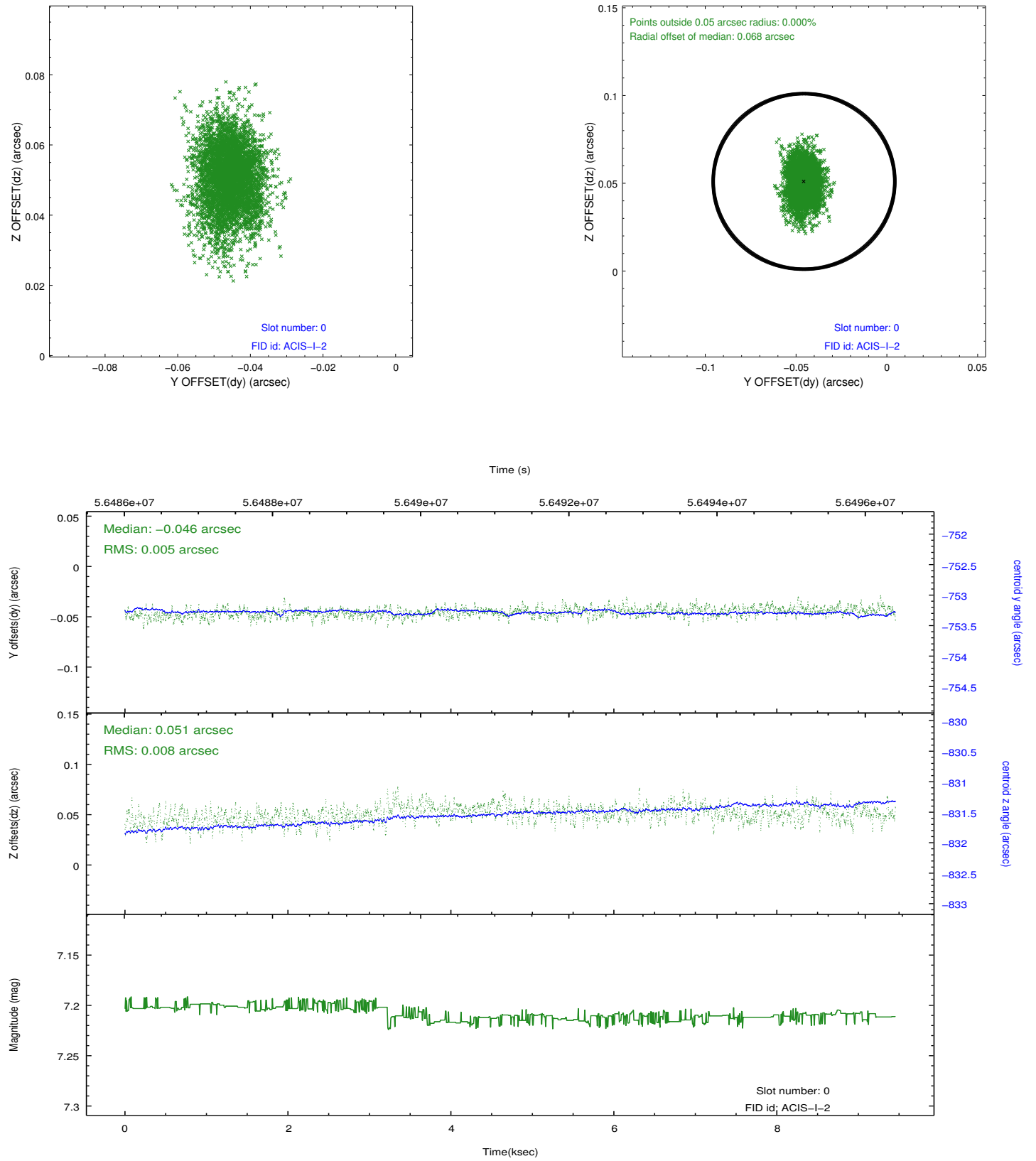


2.4.5 Slot 7

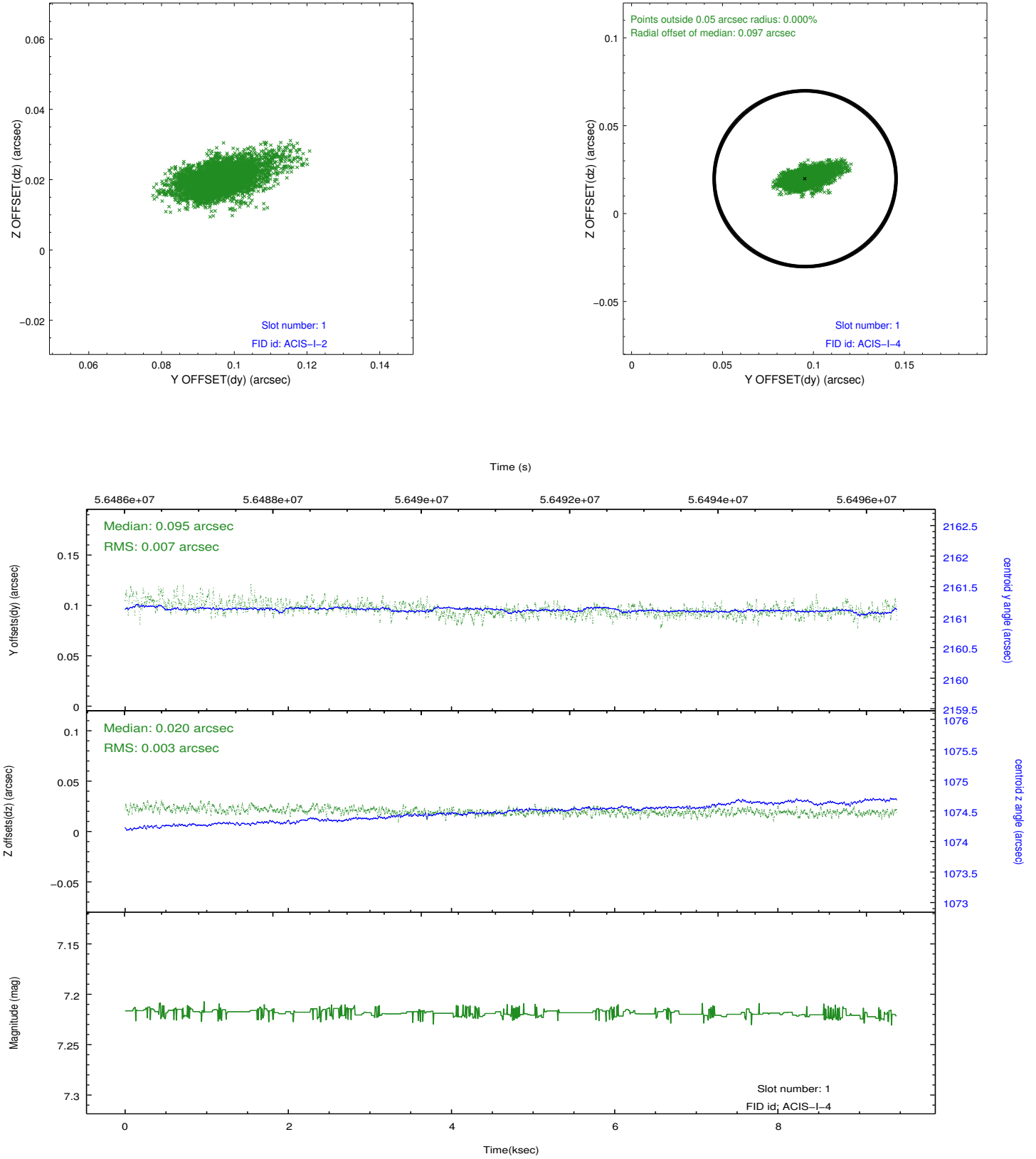


2.5 FID Slots

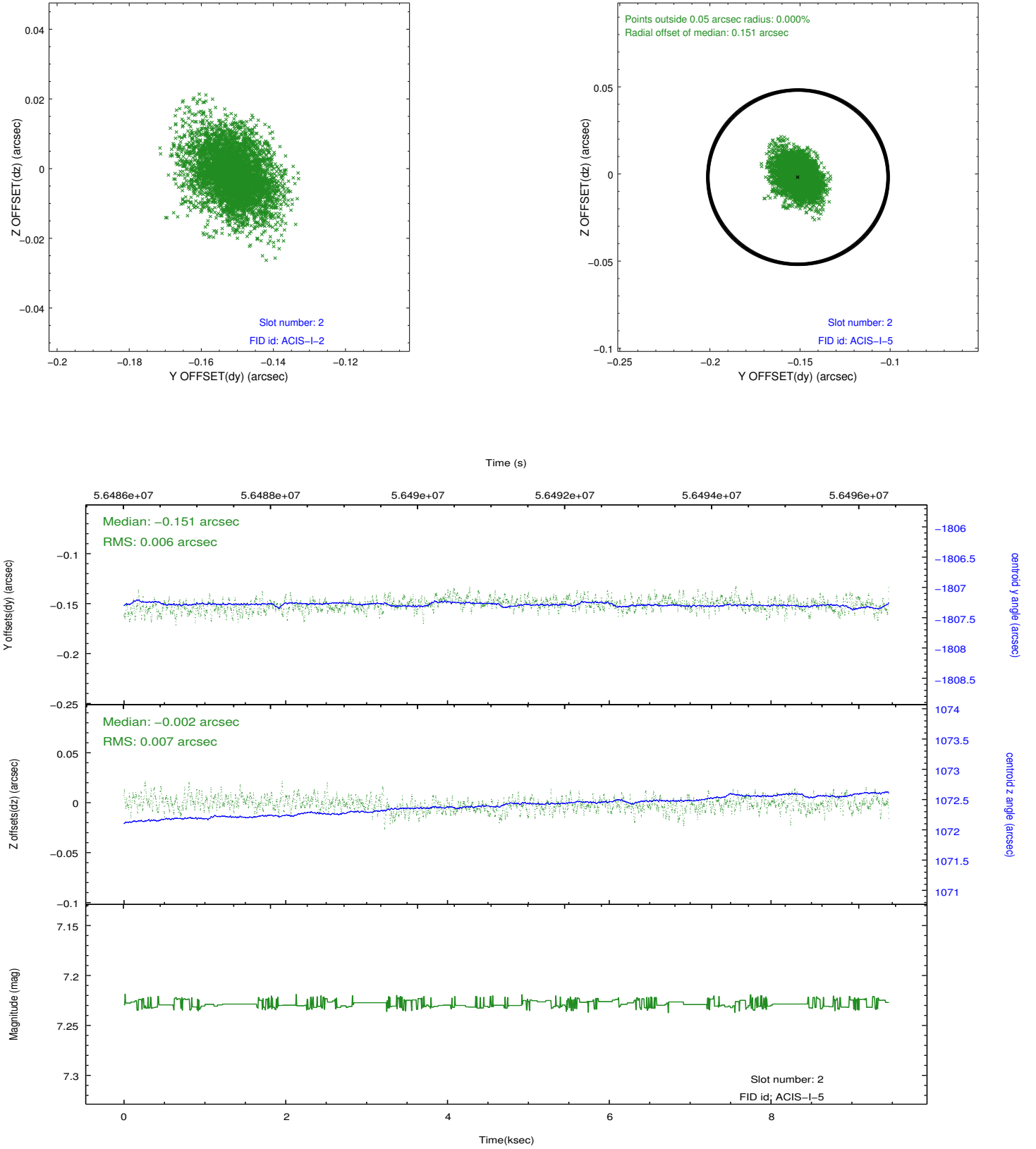
2.5.1 Slot 0



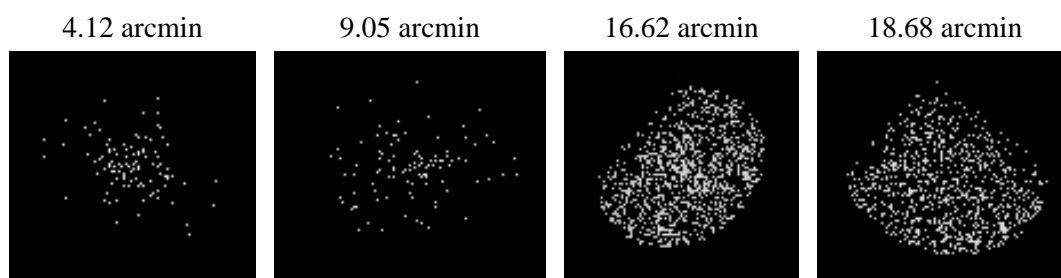
2.5.2 Slot 1



2.5.3 Slot 2



3 Point Sources



A Summary

A.1 Status

V&V Scientist	Joy Nichols
V&V Date (YYYY-MM-DD)	2010.01.22
V&V Edition	1
V&V Disposition and Status	OK
V&V Charge Time	7.993

A.2 Comments

The focal plane temperature is approximately -110C during this observation. This reprocessing of the data applies no CTI correction because none is available for this temperature at present.

The ACIS CTI correction has not been calibrated at this temperature, because it was early in the mission, and ACIS had not yet been lowered to the standard -119.7 C. Both front and back illuminated chips are affected. However a T_GAIN correction has been applied to the BI chips (ACIS-5 and ACIS-7) data included here.

The ACIS spectral response calibration is less accurate at these warmer temperatures than it is at -119.7 C. Users whose science objectives depend on the most accurate spectral response (ie: fitting line-rich spectra) may notice an effect. Users whose science objectives do not depend on the most accurate spectral response should not notice an effect.