

V&V Reference Report

L2 ASCDS Version : 8.4.3

Observation 14238 - L2 Version 2
Chandra X-Ray Center

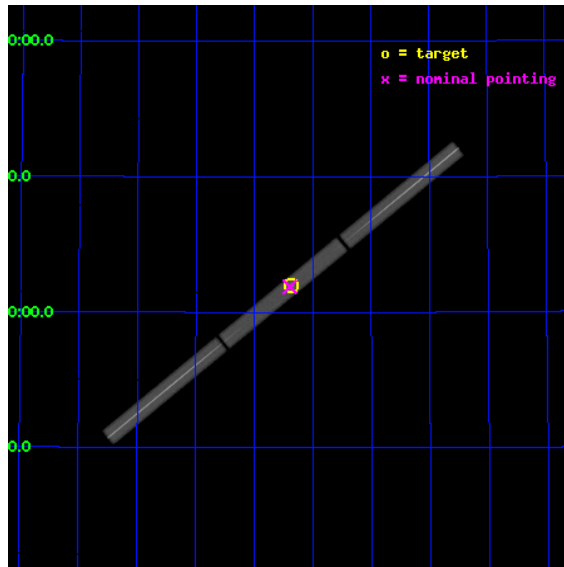
L2 Processing Date : Aug 8 2012

Contents

1	Front	2
2	OBI	3
2.1	OBI	3
2.1.1	Images	3
2.1.2	Parameters	4
2.1.3	Events	4
2.2	Compared Parameters	5
2.3	Aspect	6
2.4	Star Slots	9
2.4.1	Slot 3	9
2.4.2	Slot 4	10
2.4.3	Slot 5	11
2.4.4	Slot 6	12
2.4.5	Slot 7	13
2.5	FID Slots	14
2.5.1	Slot 0	14
2.5.2	Slot 1	15
2.5.3	Slot 2	16
3	Gratings	17
3.1	LETG Arm	17
A	Summary	19
A.1	Status	19
A.2	Comments	19

1 Front

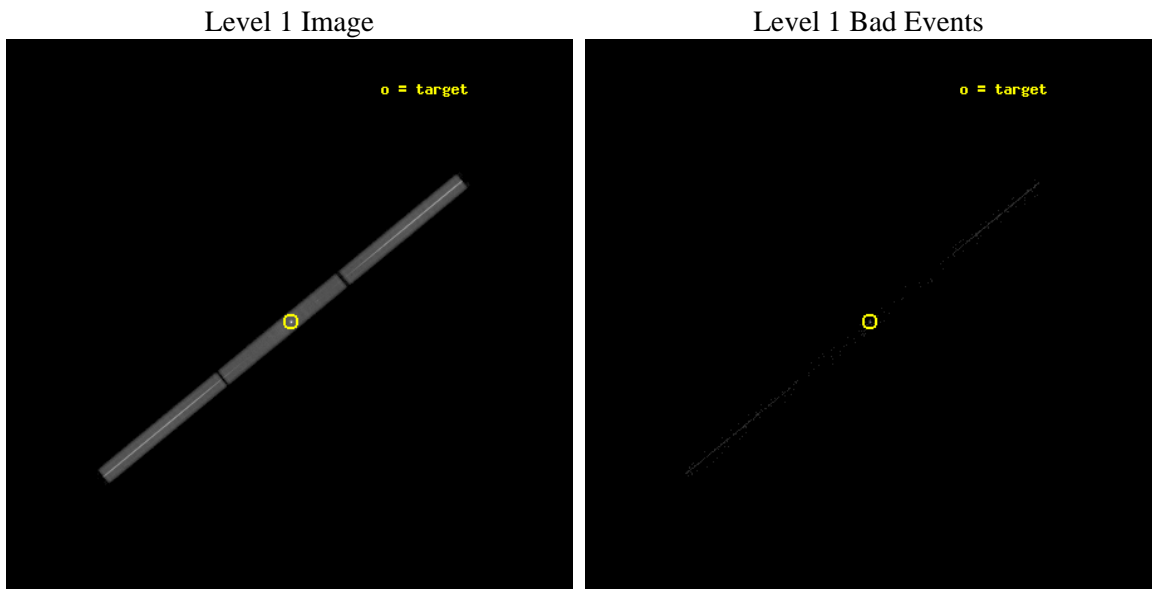
seq_num	291011	Sequence number
obs_id	14238	Observation id
title	AO-13 Calibration Observations of HZ43	Proposal title
observer	Dr. CXC Calibration	Principal investigator
object	HZ43	Source name
ra_targ	199.092083	Observer's specified target RA [deg]
dec_targ	29.099	Observer's specified target Dec [deg]
ra_nom	199.09813519666	Nominal RA [deg]
dec_nom	29.094629650152	Nominal Dec [deg]
roll_nom	140.73059783908	Nominal Roll [deg]
revision	2	Processing version of data
ontime	10151.600538969	[s]
liveltime	10049.153147711	Ontime multiplied by DTCOR
l2events	965741	Number of level 2 events



2 OBI

2.1 OBI

2.1.1 Images



2.1.2 Parameters

obi_num	1	Obi number	sched_exp_time	10000.000000	[s] Scheduled observation exposure time
ascdsver	8.4.5	Processing system revision	ontime	10151.600538969	[s]
caldsver	4.5.1	 	l1events	1288466	Number of level 1 events
date	2012-08-08T19:15:44	Date and time of file creation			
revision	2	Processing version of data			

2.1.3 Events

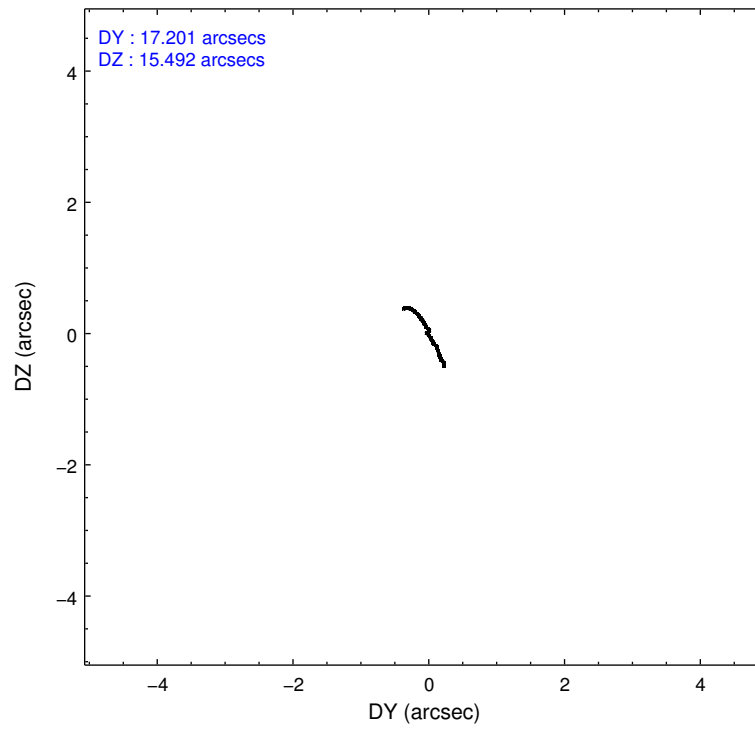
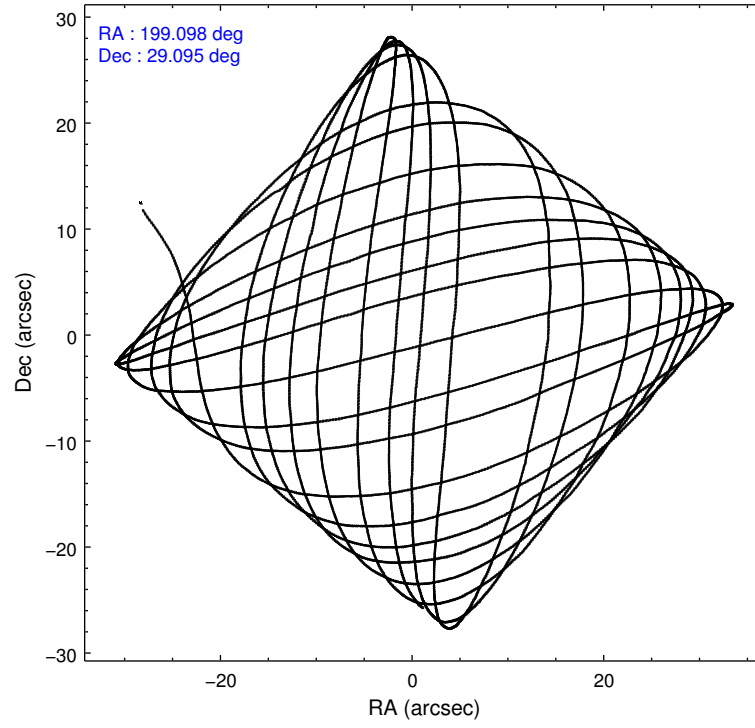
Level 1 Events

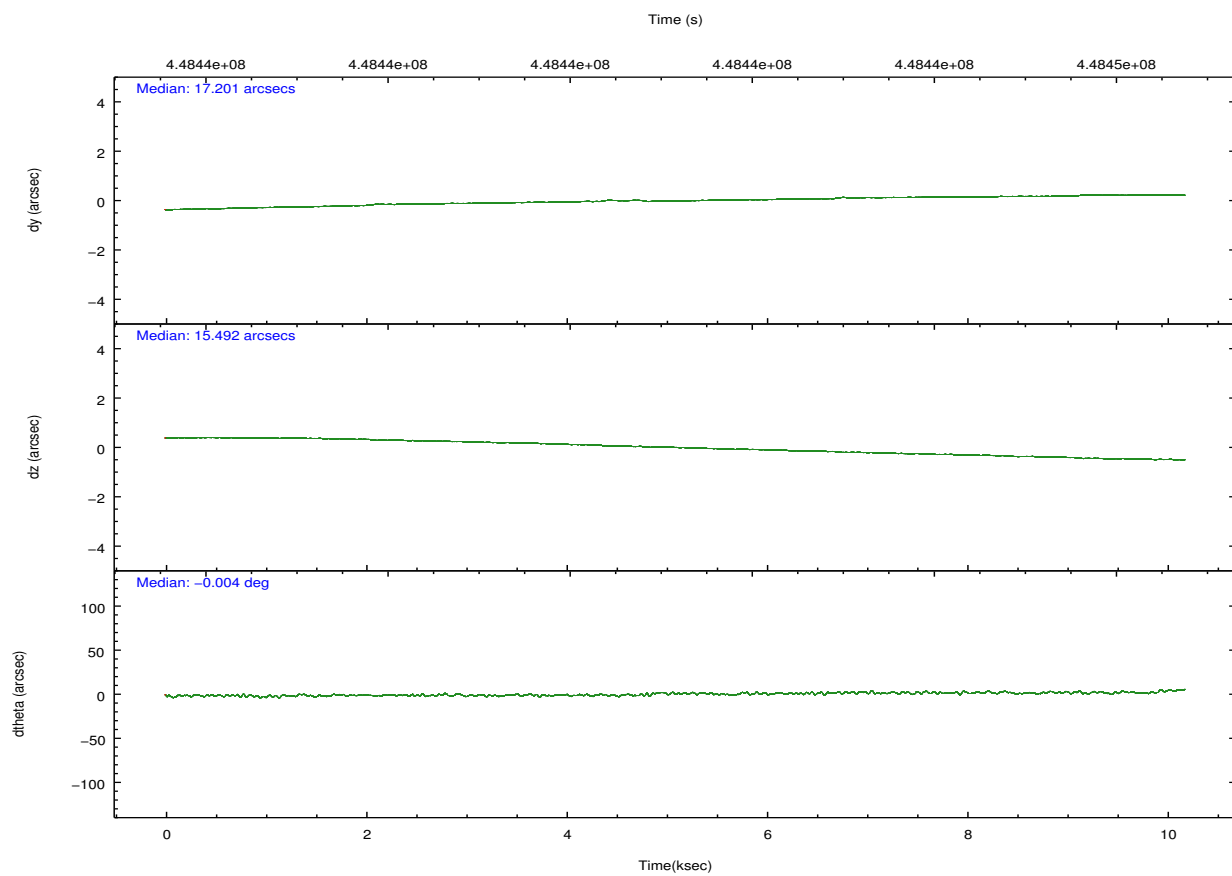
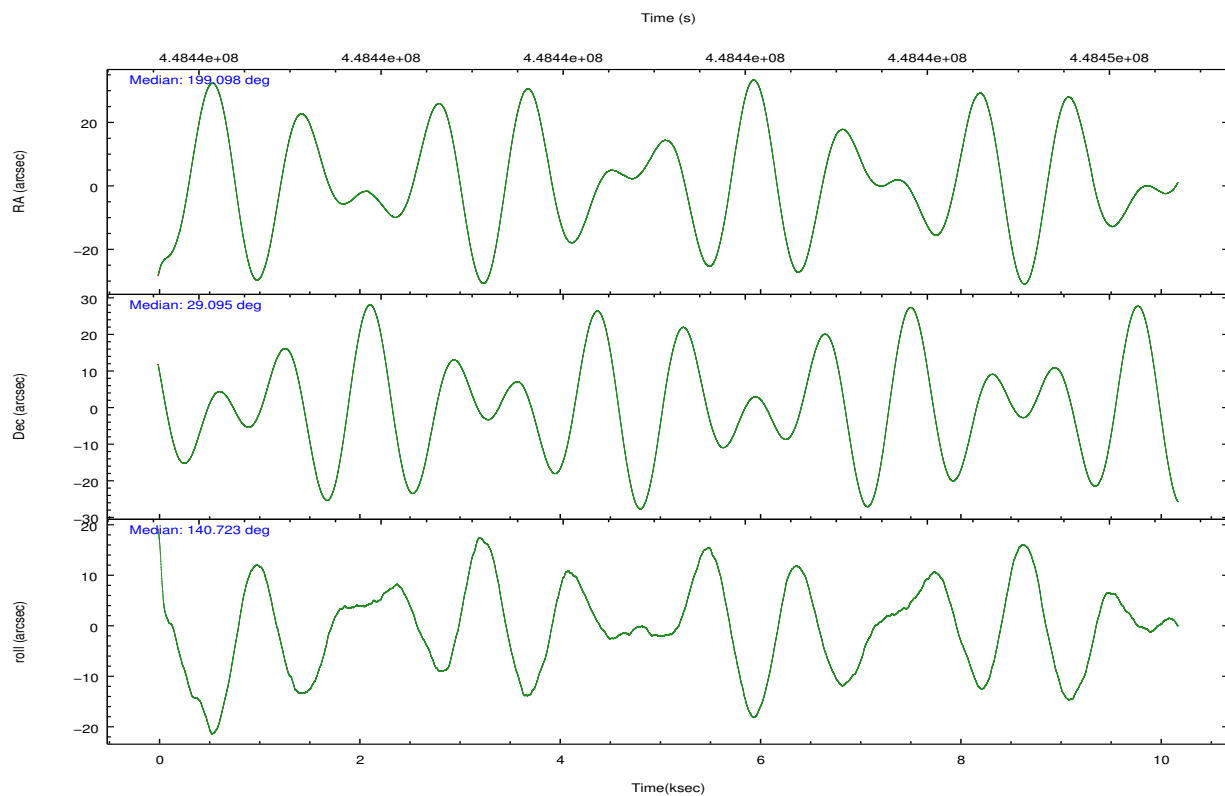
	segment 1	segment 2	segment 3
level 1 events	449472	390002	448992
rejected events	28633	28017	29288
rejected %	6%	7%	6%

2.2 Compared Parameters

Parameter	Planned	Actual	Parameter	Planned	Actual
Instrument	HRC	HRC	Obspar format version number	7	7
Detector	HRC-S	HRC-S	Obspar file type	PREDICTED	ACTUAL
Grating	LETG	LETG	Obspar update status	NONE	UPDATED
Data mode	OBSERVING	OBSERVING			
Observation mode	POINTING	POINTING			
[deg] Pointing RA	199.130883	199.0981351966595			
[deg] Pointing Dec	29.091461	29.09462965015203			
[deg] Pointing Roll	140.647319	140.730597839081			
[mm] SIM focus pos	-1.429586	-1.428180813131781			
[mm] SIM defocus	0.1037507710433287	0.1051558262725154			
[mm] SIM translation stage pos	250.455976	250.466033080201			
[mm] SIM translation stage offset	0	-0.01005468664627074			
[s] Observation start time (MET)	448436230.184000	448435026.61144			
Observation start date	2012-03-18T05:36:04	2012-03-18T05:17:06			
[s] Observation end time (MET)	448446230.184000	448446819.23707			
Observation end date	2012-03-18T08:22:44	2012-03-18T08:33:39			

2.3 Aspect



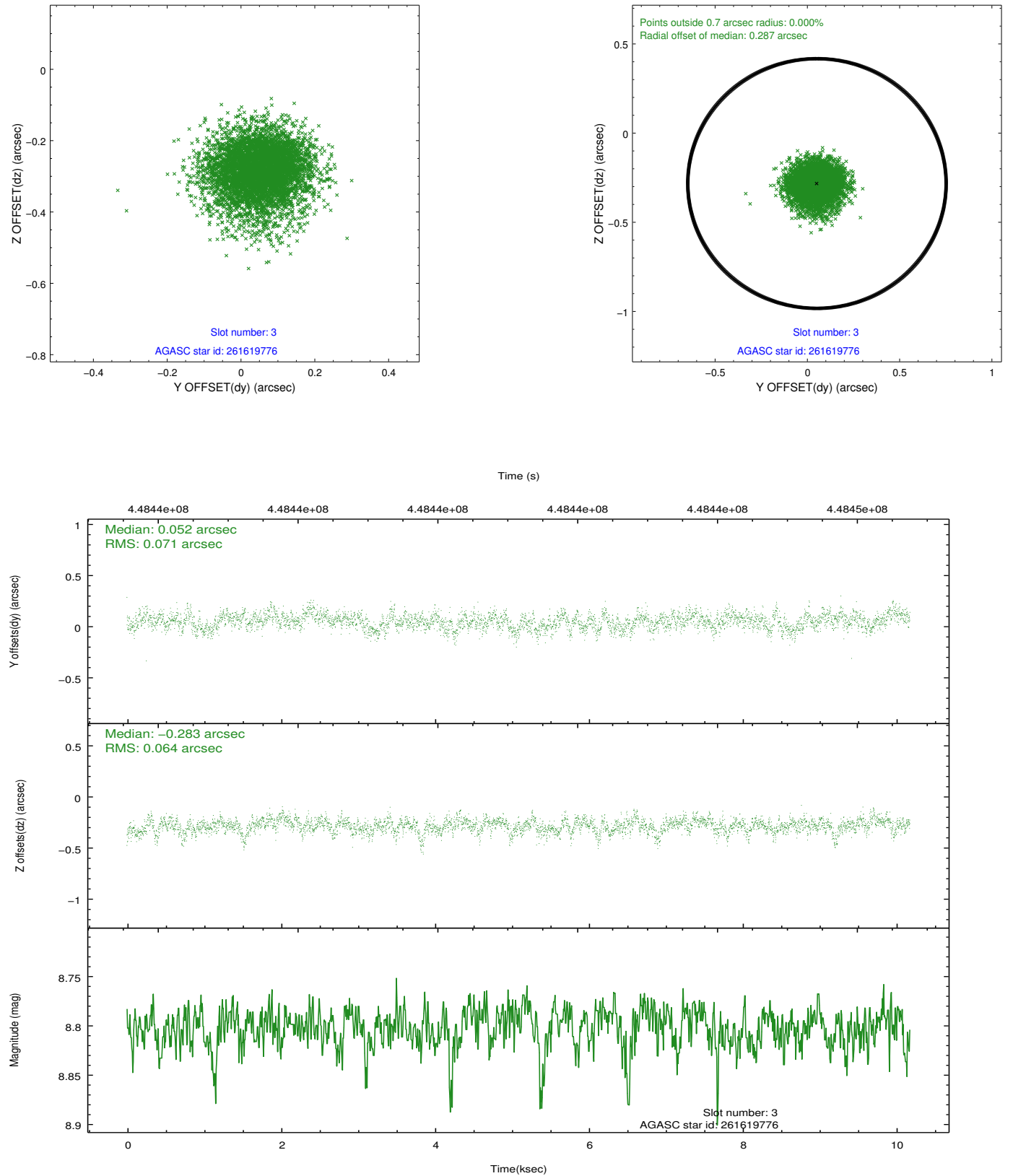


Slot Statistics

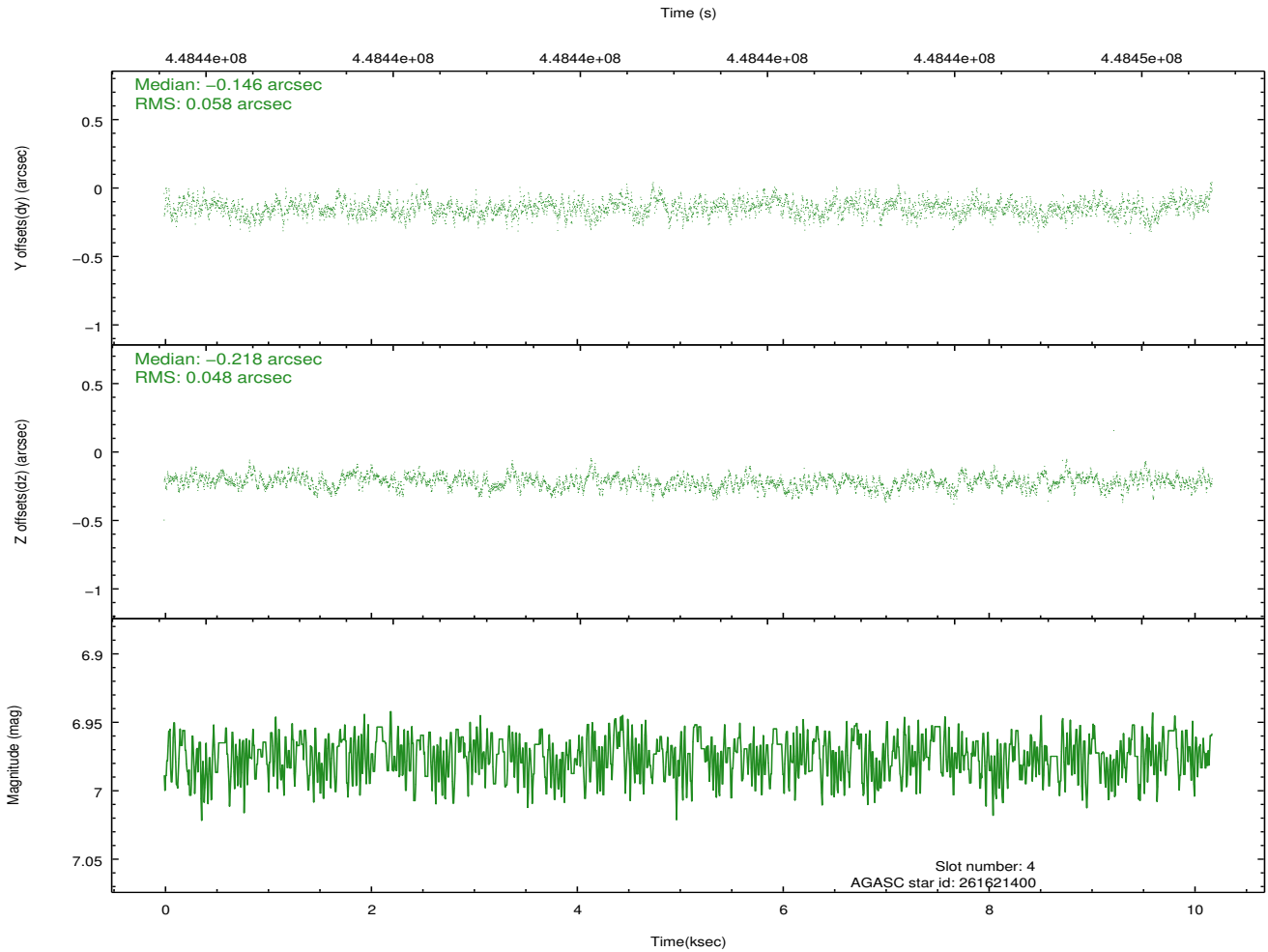
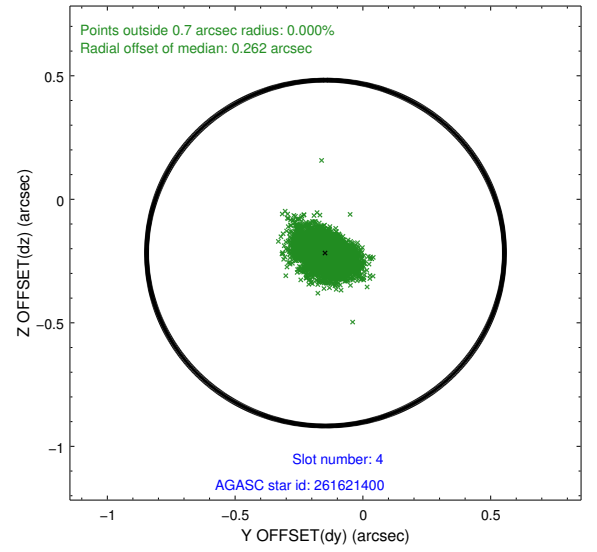
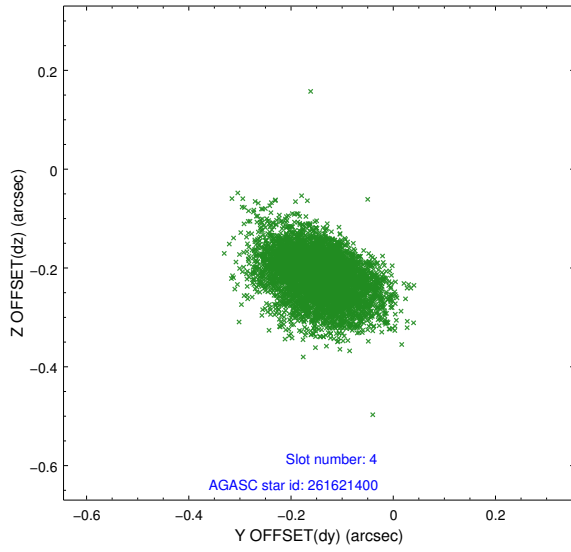
slot	status	id	mag	n_pts	med_dy	med_dz	dr1	dr2	ra	dec	mean_y	mean_z
0	FID	HRC-S-1	6.96	2484	0.021	-0.203	0.015	0.022	0.000000	0.000000	-1171.70	-464.41
1	FID	HRC-S-3	6.97	2484	0.059	-0.041	0.017	0.025	0.000000	0.000000	-1174.87	565.09
2	FID	HRC-S-4	6.90	2484	0.307	-0.053	0.005	0.009	0.000000	0.000000	1226.36	568.08
3	GUIDE	261619776	8.80	4965	0.052	-0.283	0.099	0.168	198.654383	29.401174	1863.96	82.91
4	GUIDE	261621400	6.97	4967	-0.146	-0.218	0.079	0.131	198.901600	28.741982	-237.08	1431.02
5	GUIDE	261626376	9.68	4922	0.057	0.057	0.178	0.290	198.947288	29.347445	1030.83	-347.06
6	GUIDE	261629720	8.11	4967	0.179	0.262	0.088	0.140	199.236176	29.044452	-362.85	-79.41
7	GUIDE	261623040	9.13	4880	-0.137	0.195	0.107	0.181	198.792686	29.757643	2339.10	-1185.13

2.4 Star Slots

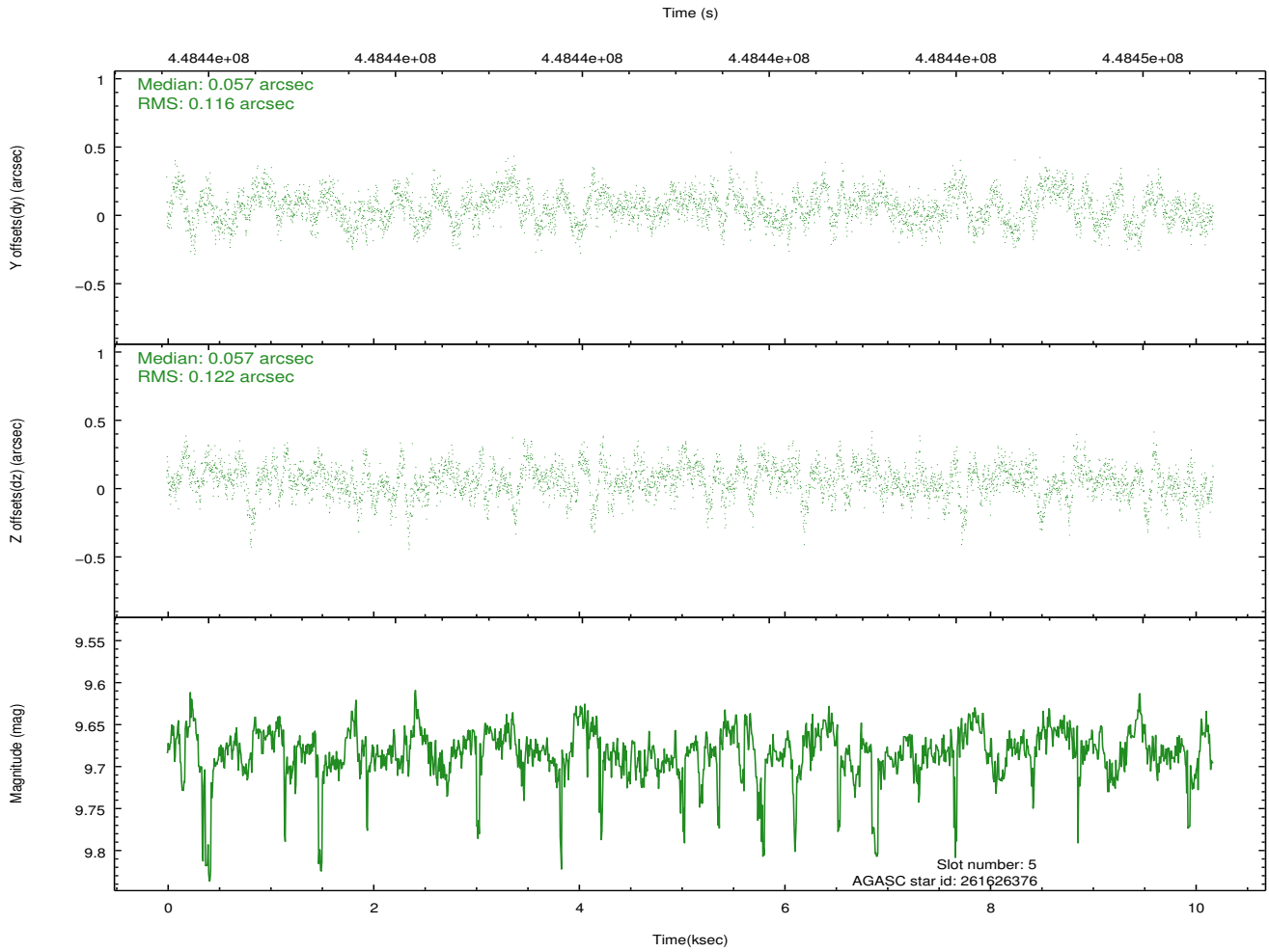
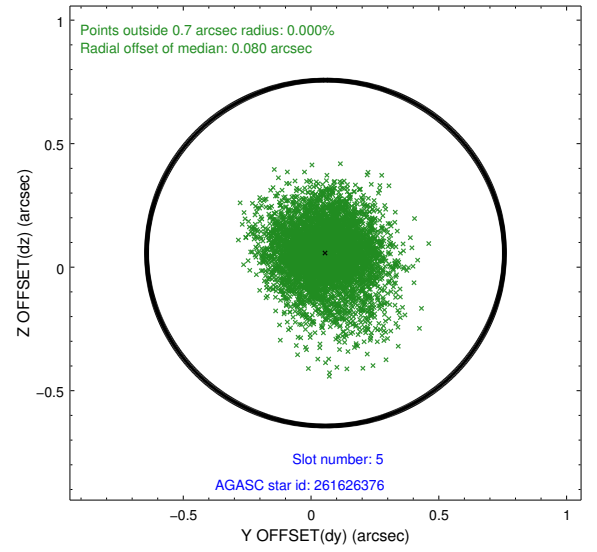
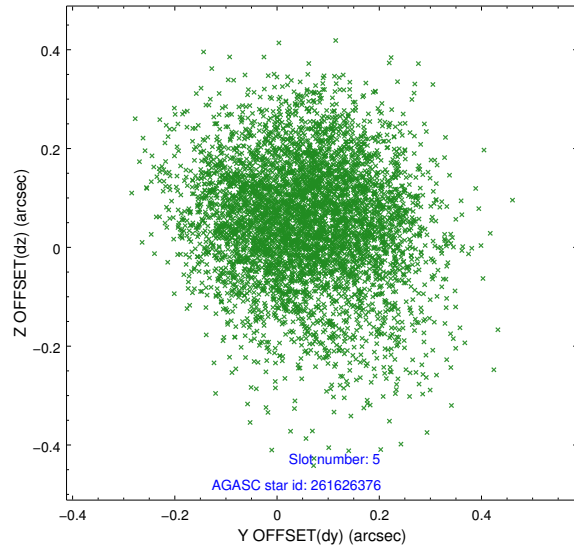
2.4.1 Slot 3



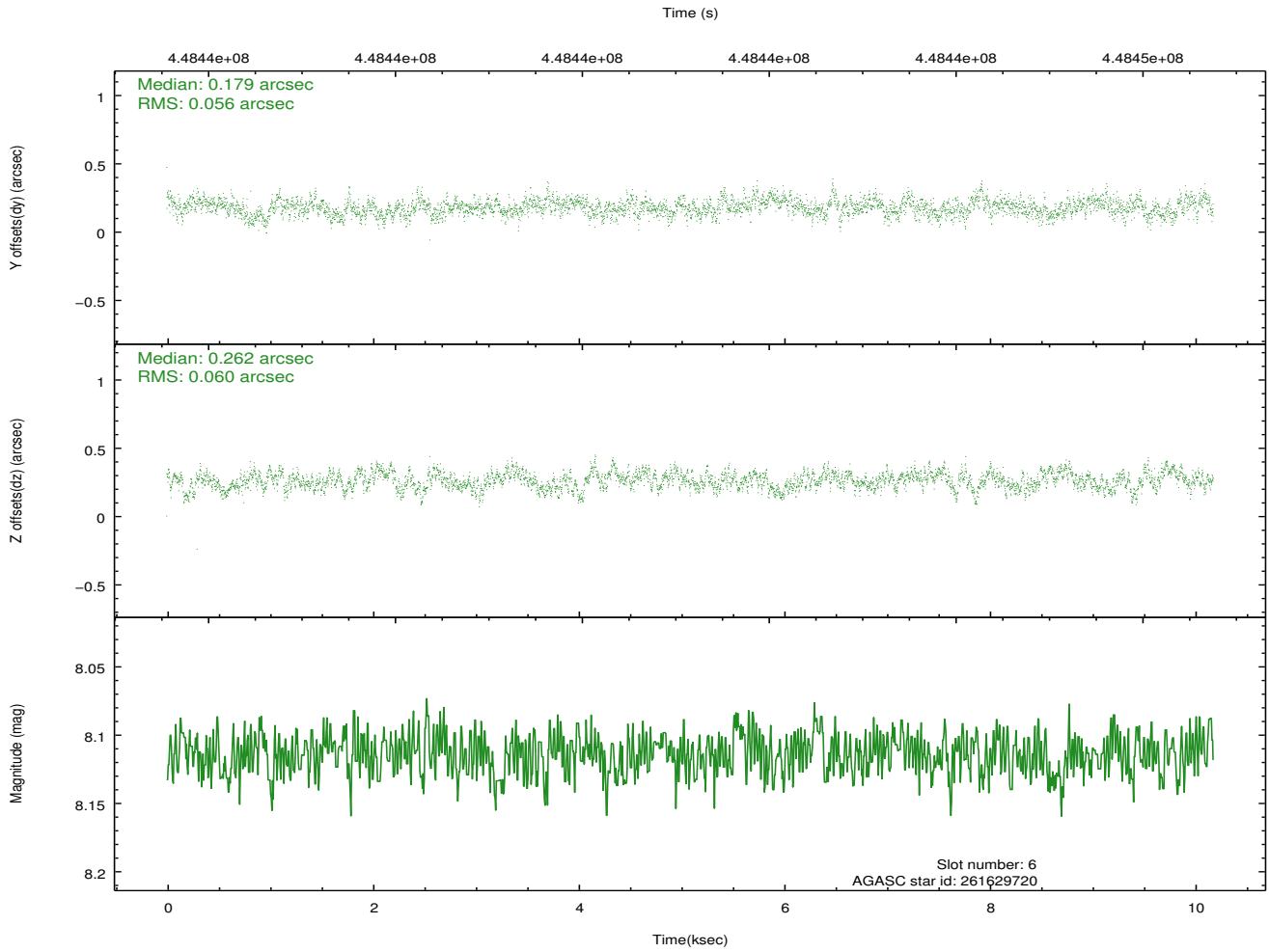
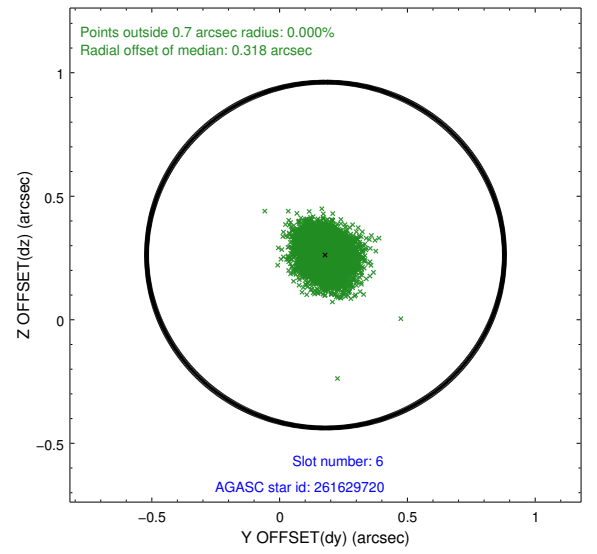
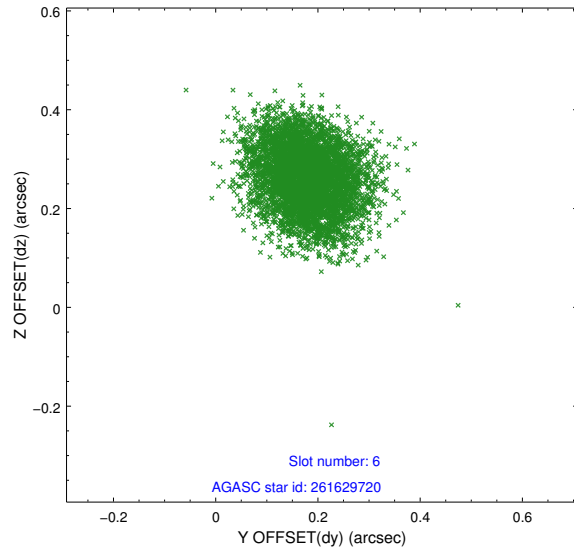
2.4.2 Slot 4



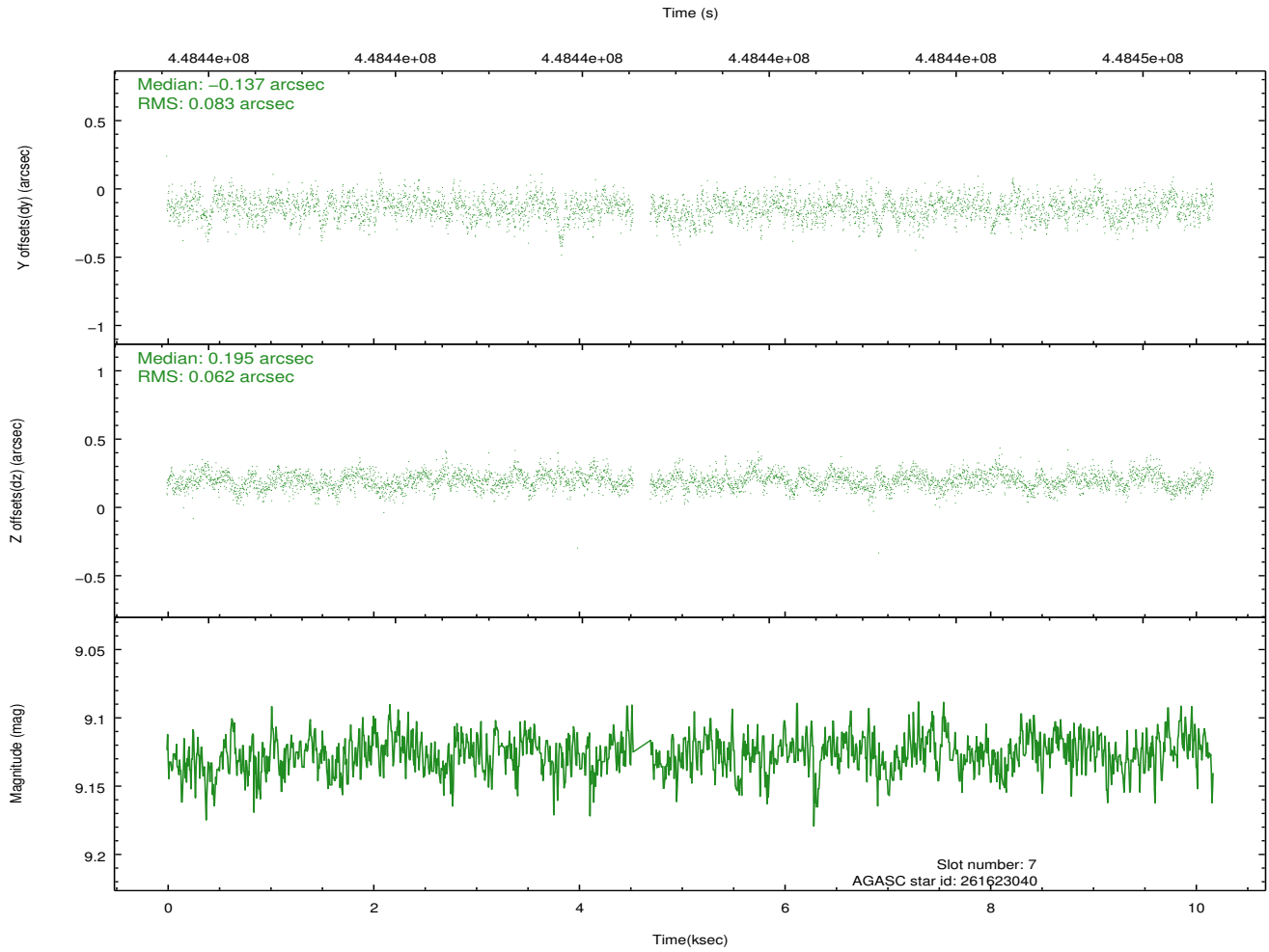
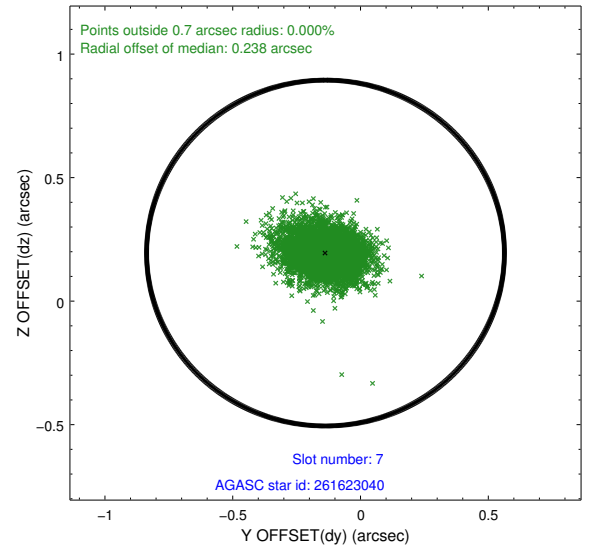
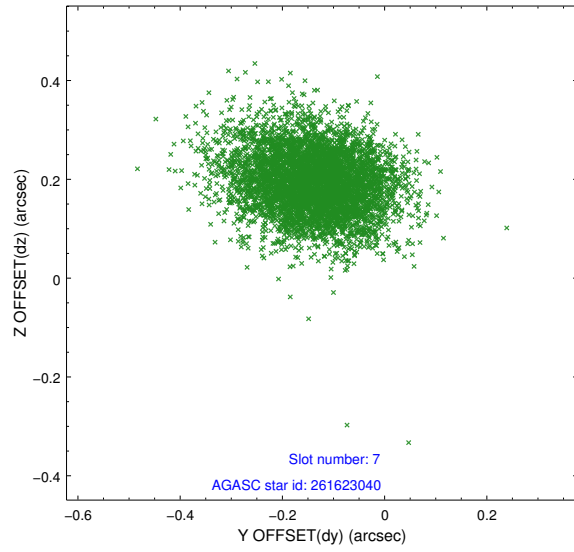
2.4.3 Slot 5



2.4.4 Slot 6

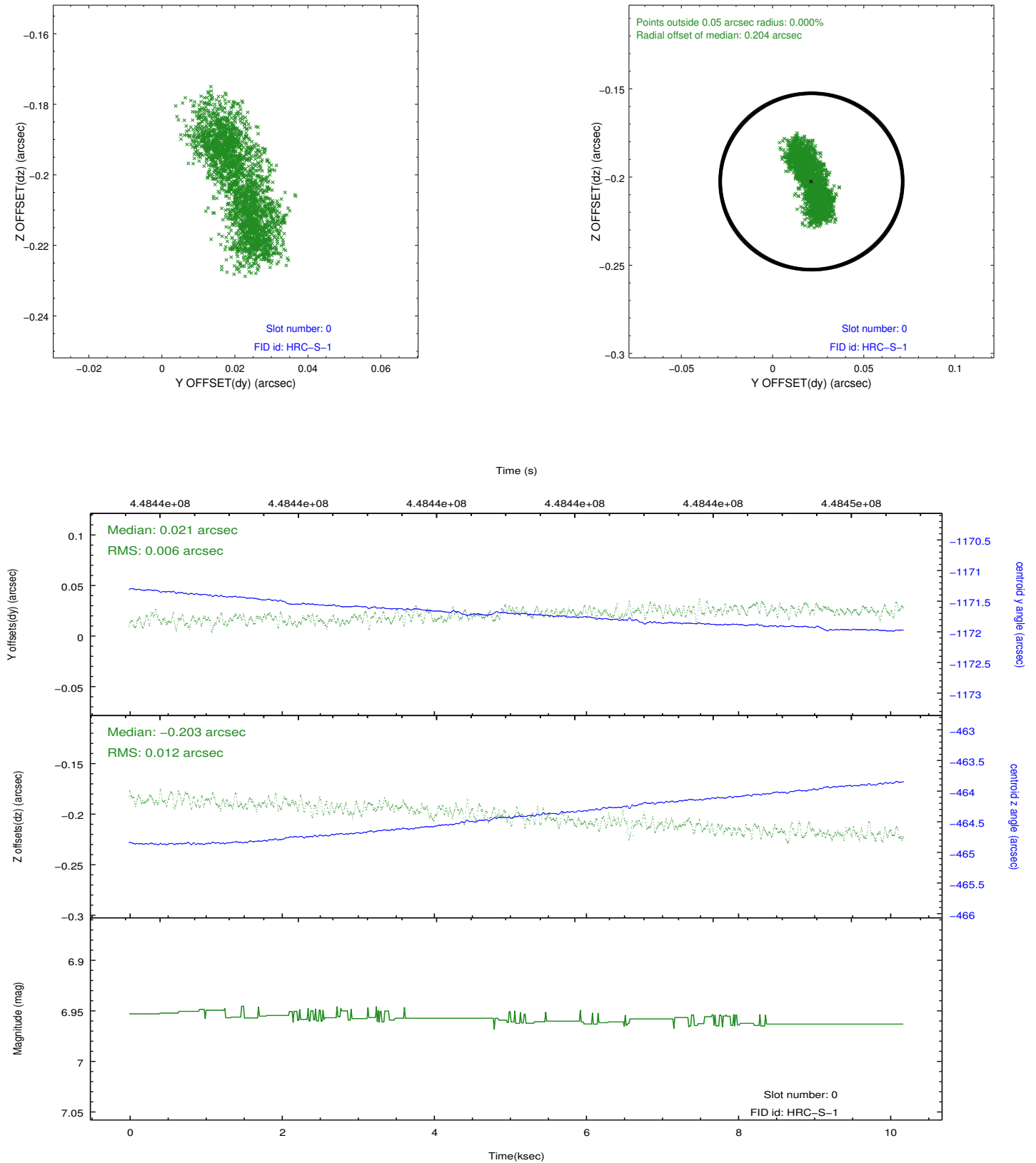


2.4.5 Slot 7

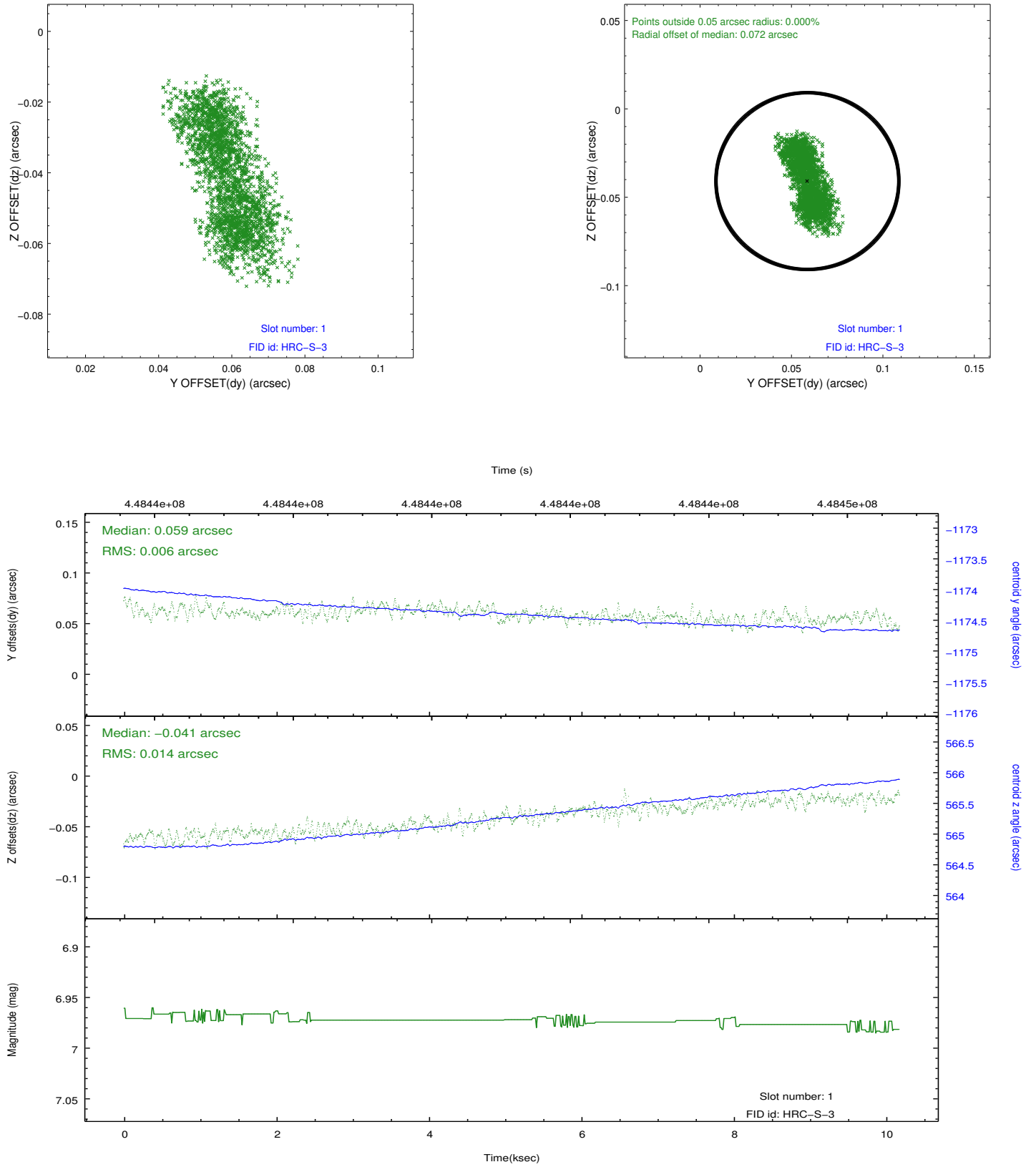


2.5 FID Slots

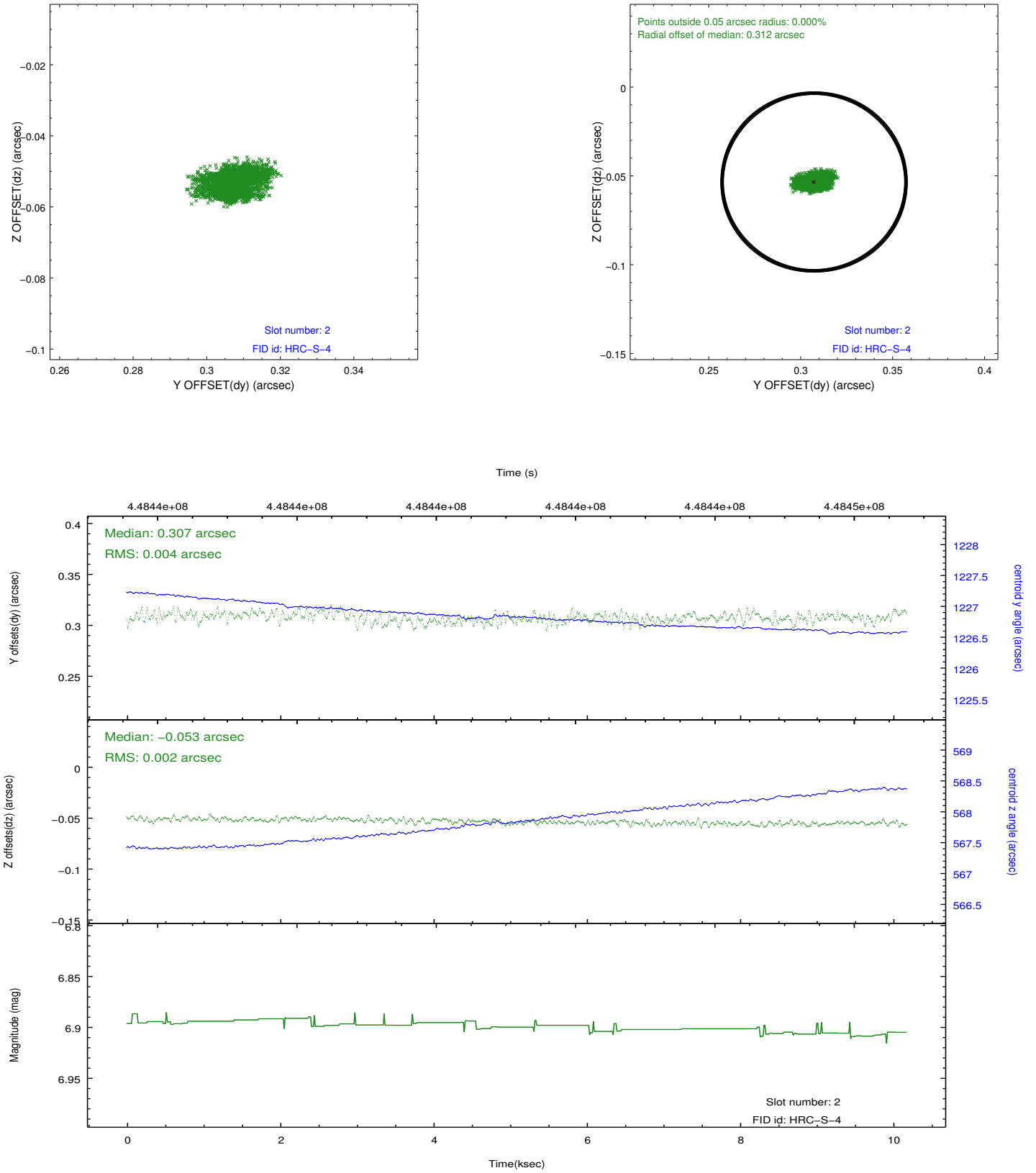
2.5.1 Slot 0



2.5.2 Slot 1

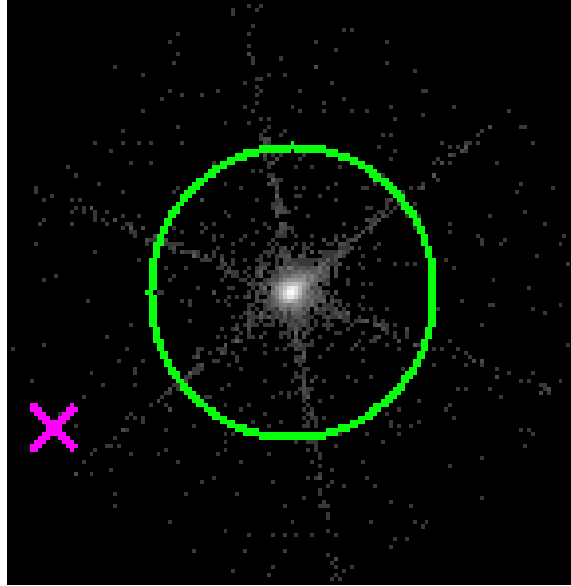


2.5.3 Slot 2

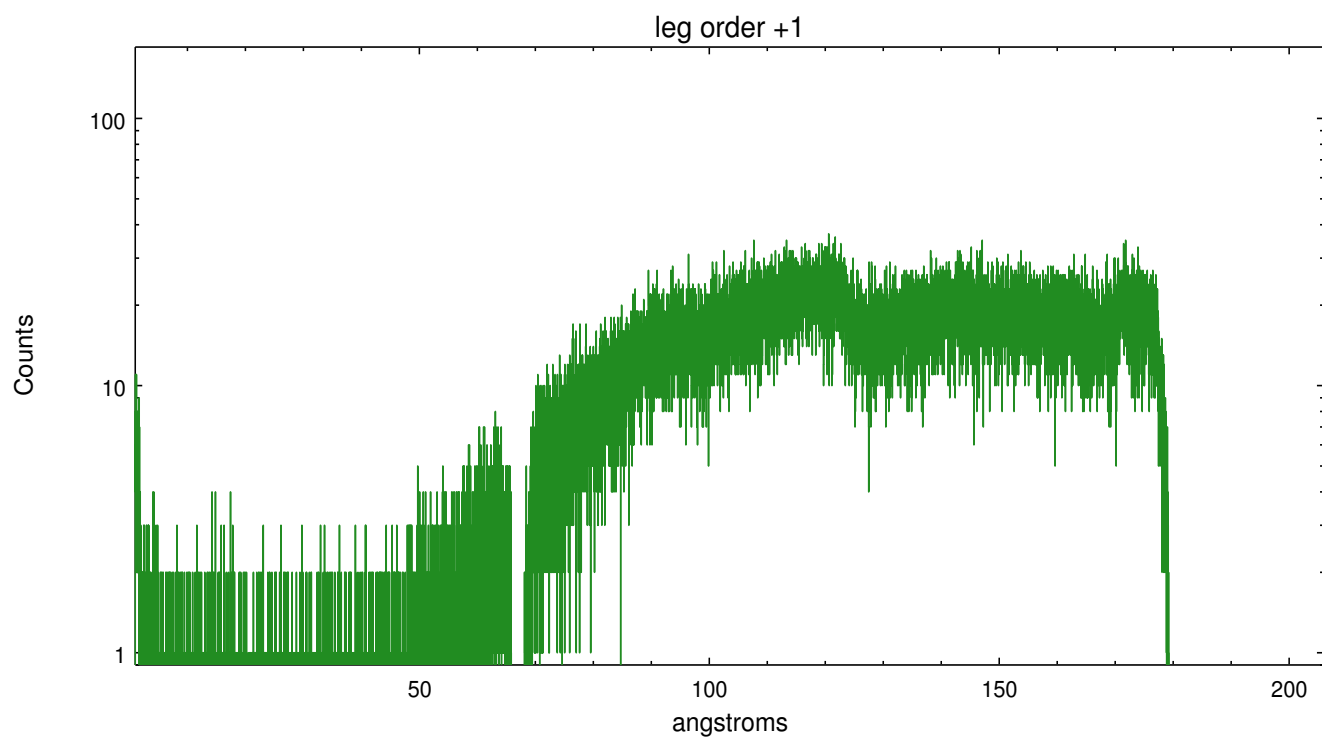
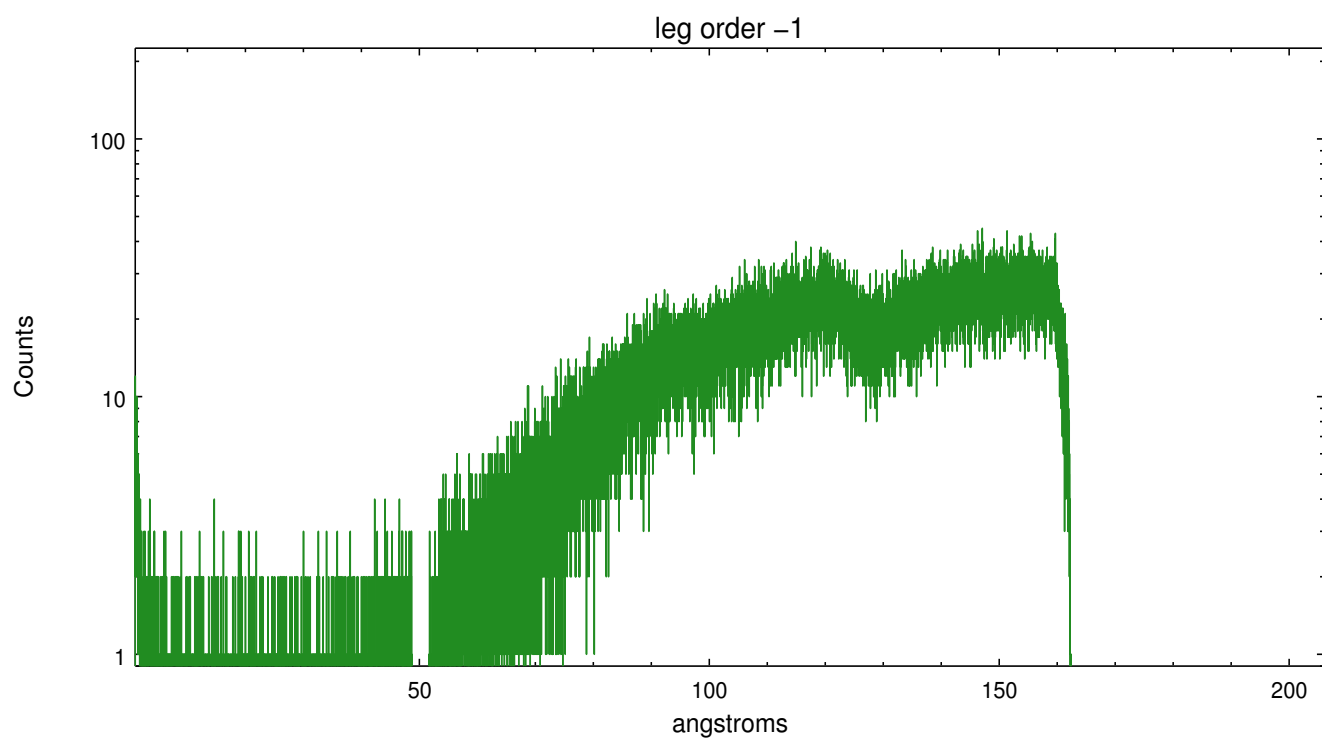


3 Gratings

3.1 LETG Arm



LETG Zero Order



A Summary

A.1 Status

V&V Scientist	Joy Nichols
V&V Date (YYYY-MM-DD)	2012.08.09
V&V Edition	1
V&V Disposition and Status	OK
V&V Charge Time	10.151600538969

A.2 Comments

This obsid is part of a test of the proposed HTC-S MCP HV settings. The data were taken with the planned update to the HRC-S MCP HV step settings: bottom = 105, top = 93.