

V&V Reference Report

L2 ASCDS Version : 8.4.5

Observation 13148 - L2 Version 2
Chandra X-Ray Center

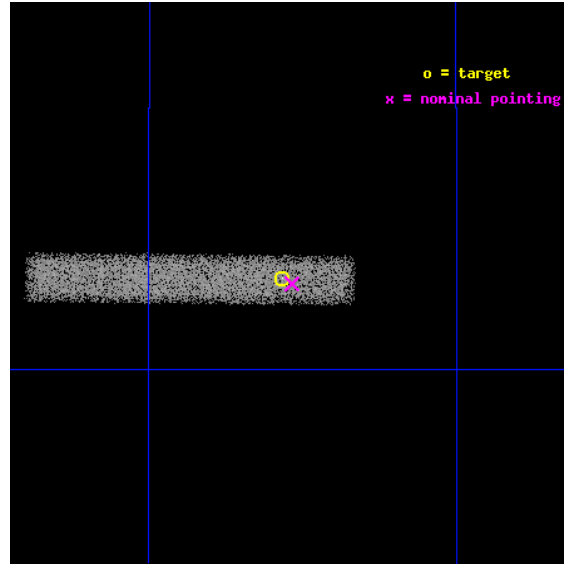
L2 Processing Date : Jul 7 2012

Contents

1	Front	2
2	OBI	3
2.1	OBI	3
2.1.1	Images	3
2.1.2	Bias	3
2.1.3	Parameters	4
2.1.4	Events	4
2.2	Compared Parameters	5
2.3	Aspect	6
2.4	Star Slots	9
2.4.1	Slot 3	9
2.4.2	Slot 4	10
2.4.3	Slot 5	11
2.4.4	Slot 6	12
2.4.5	Slot 7	13
2.5	FID Slots	14
2.5.1	Slot 0	14
2.5.2	Slot 1	15
2.5.3	Slot 2	16
A	Summary	17
A.1	Status	17
A.2	Comments	17

1 Front

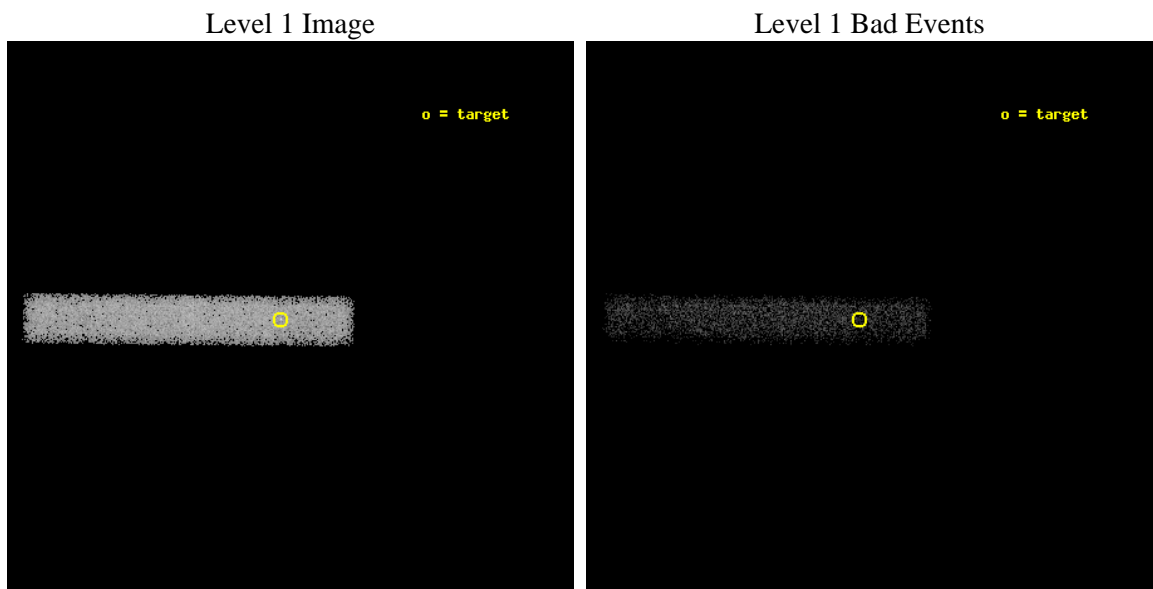
seq_num	501534	Sequence number
obs_id	13148	Observation id
title	The first low-B soft gamma repeater: testing the magnetar model	Pr
observer	Dr. Nanda Rea	Principal investigator
object	SGR 0418+5729	Source name
dtcycle	0	
cycle	P	events from which exps? Prim/Second/Both
ra_targ	64.64125	Observer's specified target RA [deg]
dec_targ	57.539694	Observer's specified target Dec [deg]
ra_nom	64.633616250611	Nominal RA [deg]
dec_nom	57.537117345009	Nominal Dec [deg]
roll_nom	180.55712722964	Nominal Roll [deg]
revision	2	Processing version of data
ontime	30009.911799312	Sum of GTIs [s]
livetime	27217.405948949	Livetime [s]
ontime7	30009.911799312	Sum of GTIs [s]
l2events	17235	Number of level 2 events



2 OBI

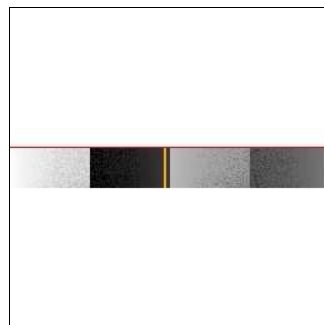
2.1 OBI

2.1.1 Images



2.1.2 Bias

Chip 7



2.1.3 Parameters

obi_num	0	Obi number	sched_exp_time	30000.000000	[s] Scheduled observation exposure time
ascdsver	8.4.5	Processing system revision	ontime	30009.911799312	Sum of GTIs [s]
caldsver	4.5.0	 	ontime7	30009.911799312	Sum of GTIs [s]
date	2012-07-07T17:23:14	Date and time of file creation	l1events	35721	Number of level 1 events
revision	2	Processing version of data			

2.1.4 Events

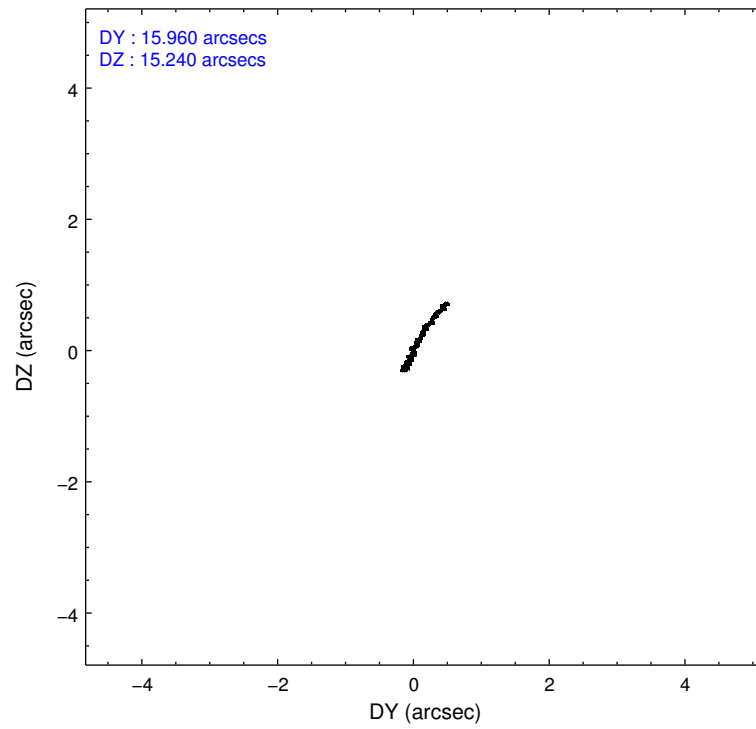
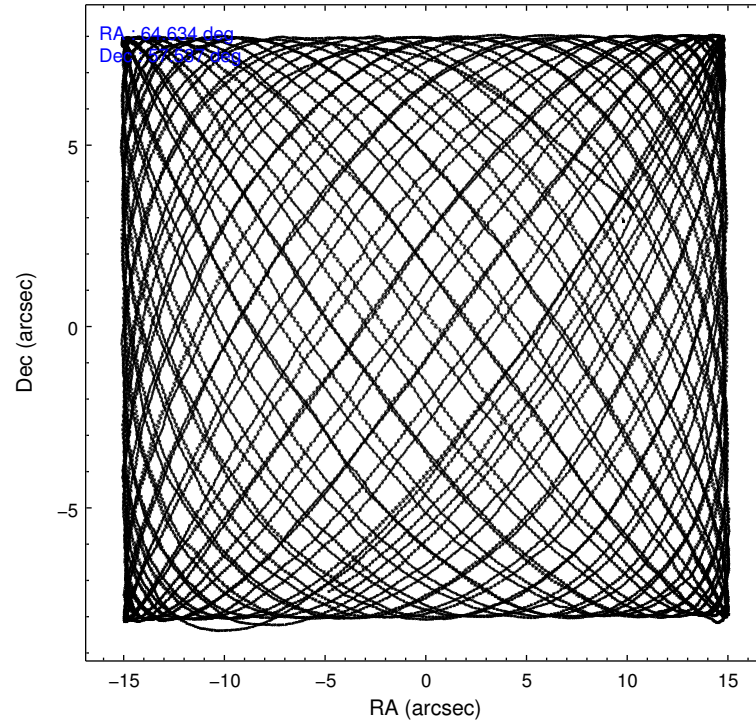
	ccd 7
level 1 events	35721
rejected events	17598
rejected %	49%

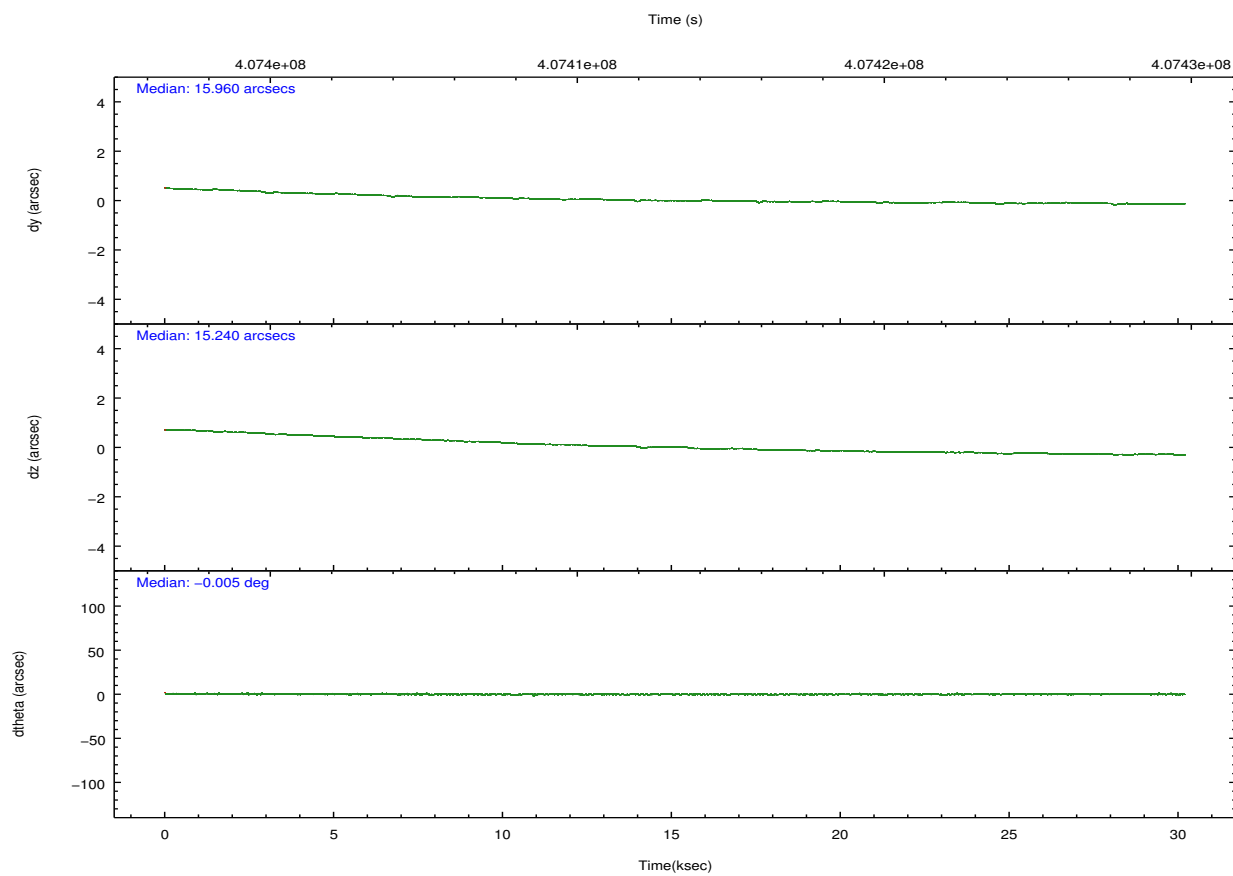
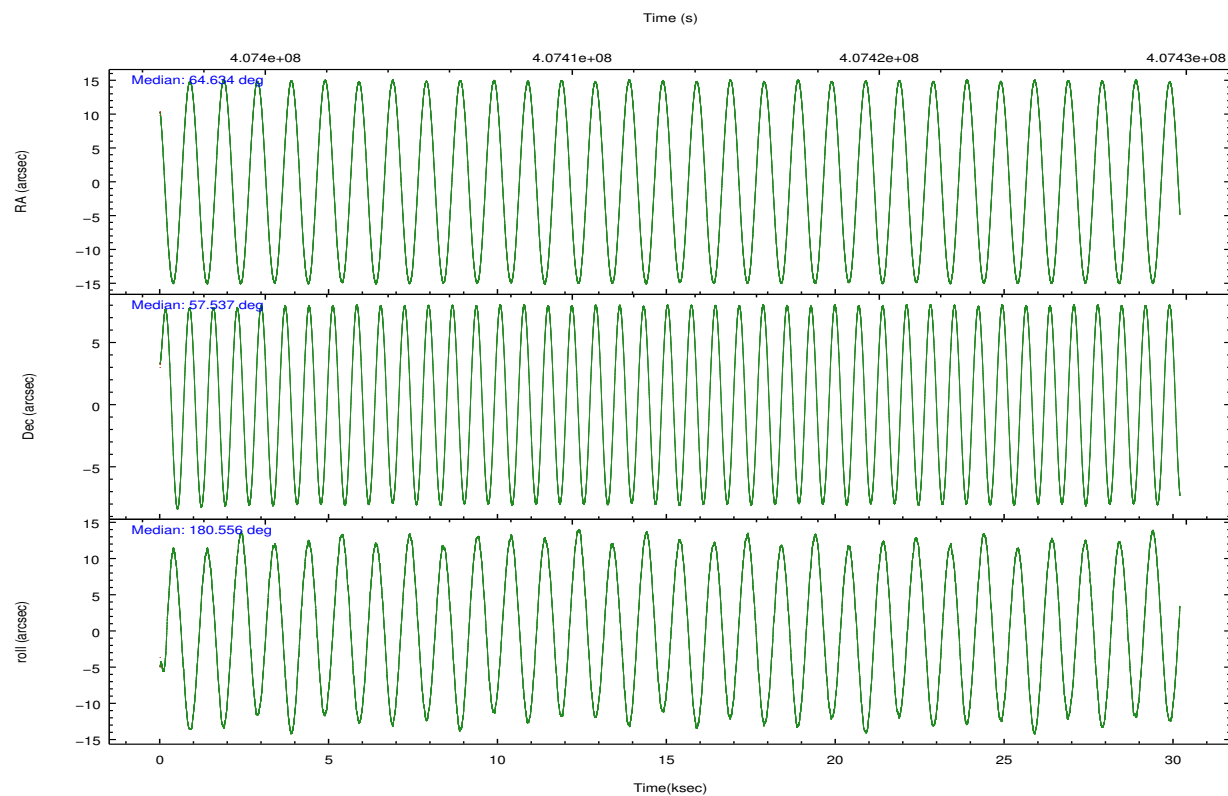
	ccd 7
grade 0 events	1818
	5%
grade 1 events	56
	0%
grade 2 events	3526
	9%
grade 3 events	2522
	7%
grade 4 events	2350
	6%
grade 5 events	3710
	10%
grade 6 events	7908
	22%
grade 7 events	13831
	38%

2.2 Compared Parameters

Parameter	Planned	Actual	Parameter	Planned	Actual
Instrument	ACIS	ACIS	Obspar format version number	7	7
Detector	ACIS-7	ACIS-7	Obspar file type	PREDICTED	ACTUAL
Grating	NONE	NONE	Obspar update status	NONE	UPDATED
Data mode	FAINT	FAINT	Number of optional ACIS chips dropped	0	0
Observation mode	POINTING	POINTING	On-chip summing requested	N	N
[deg] Pointing RA	64.677126	64.63361625061084	Subarray requested	CUSTOM	1/8
[deg] Pointing Dec	57.551327	57.53711734500925	Subarray start row	449	449
[deg] Pointing Roll	180.363785	180.5571272296448	Subarray row count	128	128
[mm] SIM focus pos	-0.684267	-0.6828225247311905	Alternating exposures requested	N	N
[mm] SIM defocus	0	0.001444936568705701	[s] Primary exposure time	0.000000	0.4
[mm] SIM translation stage pos	-190.132523	-190.1400660498719			
[mm] SIM translation stage offset	0	0.00754346686406393			
[s] Observation start time (MET)	407398286.184000	407397662.77659			
Observation start date	2010-11-29T06:10:20	2010-11-29T06:01:02			
[s] Observation end time (MET)	407428286.184000	407428763.8407			
Observation end date	2010-11-29T14:30:20	2010-11-29T14:39:23			
Read mode	TIMED	TIMED			

2.3 Aspect



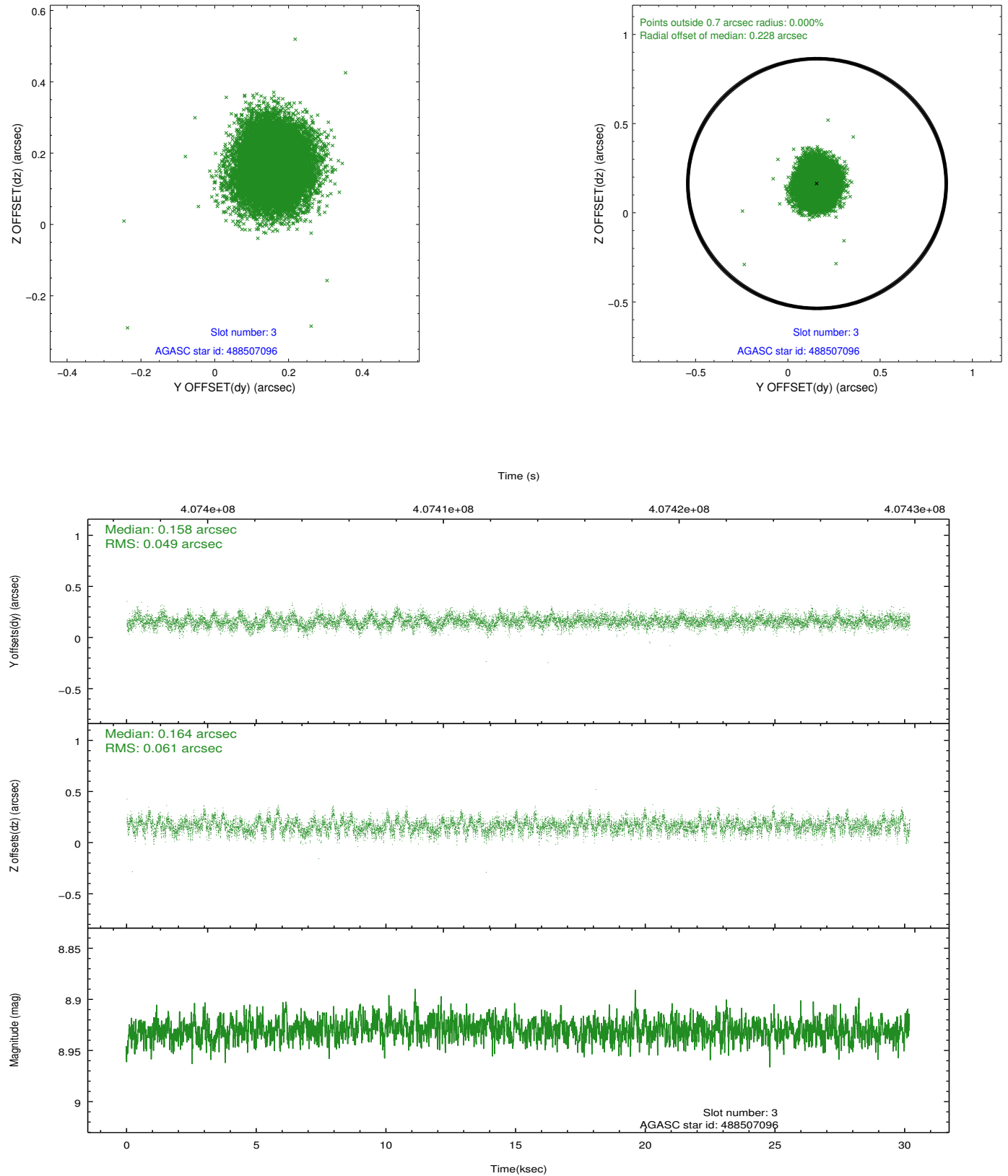


Slot Statistics

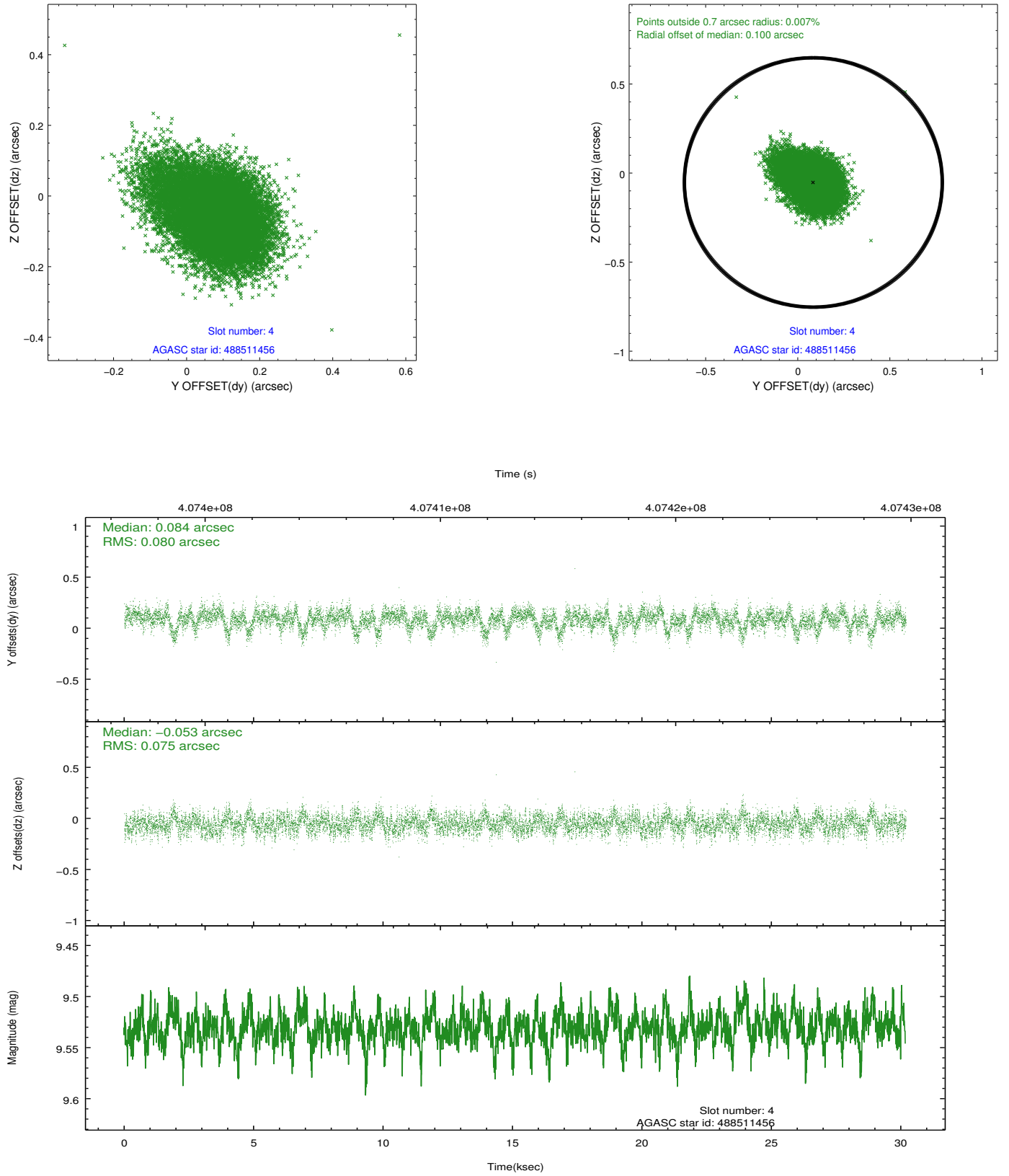
slot	status	id	mag	n_pts	med_dy	med_dz	dr1	dr2	ra	dec	mean_y	mean_z
0	FID	ACIS-S-2	6.90	7364	-0.109	-0.024	0.008	0.013	0.000000	0.000000	-769.11	-1736.73
1	FID	ACIS-S-4	6.98	7363	0.210	0.059	0.007	0.012	0.000000	0.000000	2144.44	171.78
2	FID	ACIS-S-5	7.01	7363	-0.132	-0.026	0.007	0.013	0.000000	0.000000	-1821.90	165.42
3	GUIDE	488507096	8.93	14721	0.158	0.164	0.084	0.135	65.387964	57.745120	-1369.75	-695.80
4	GUIDE	488511456	9.53	14712	0.084	-0.053	0.114	0.194	64.983446	57.180675	-589.05	1336.86
5	GUIDE	488513104	9.06	14709	0.001	-0.115	0.087	0.138	65.198474	57.441238	-1007.37	399.01
6	GUIDE	488513832	9.20	14713	-0.090	0.057	0.100	0.162	64.776874	57.090020	-184.74	1662.65
7	GUIDE	488521400	6.06	14727	-0.147	-0.060	0.062	0.105	63.757480	57.460363	1782.74	304.41

2.4 Star Slots

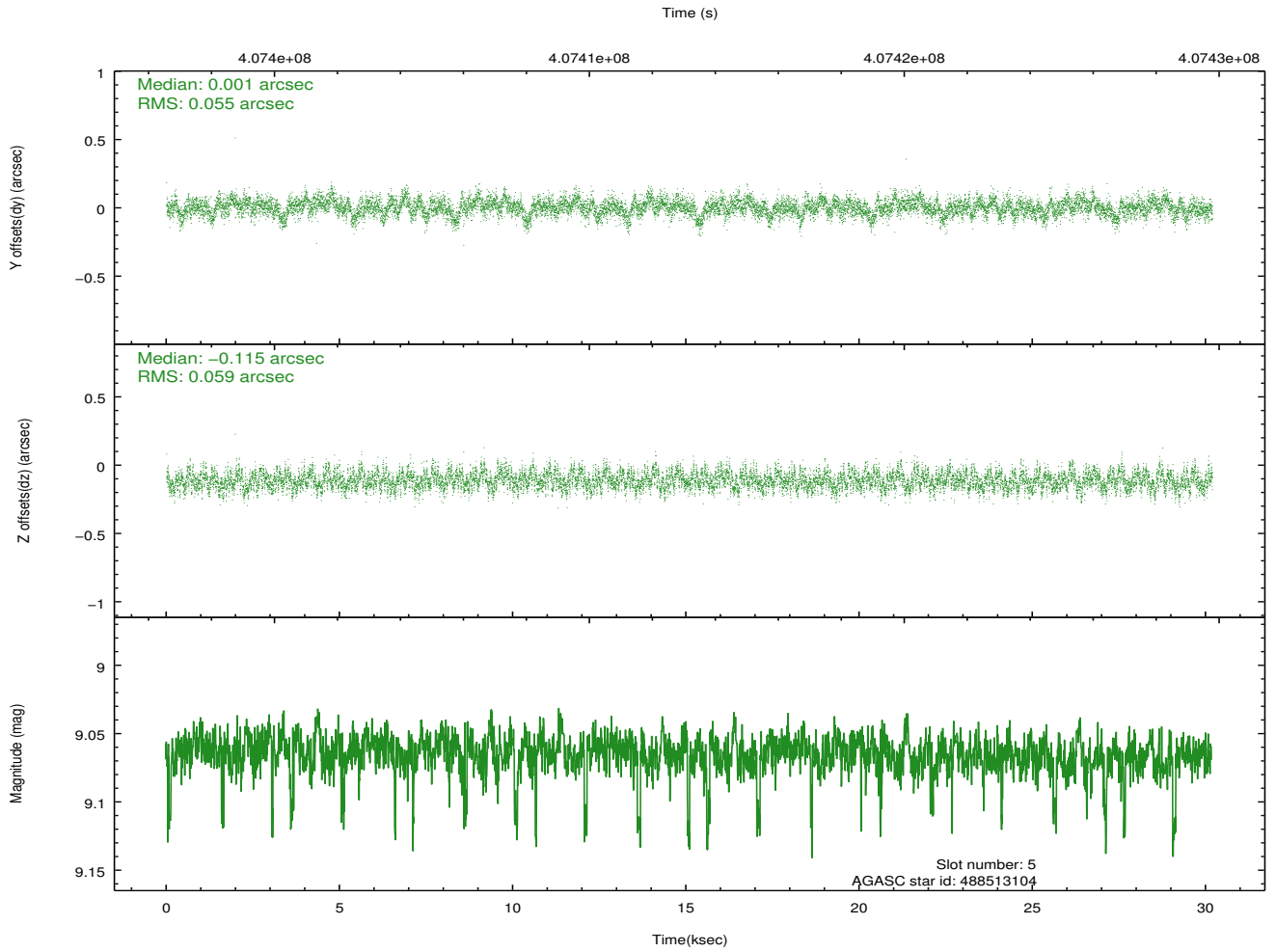
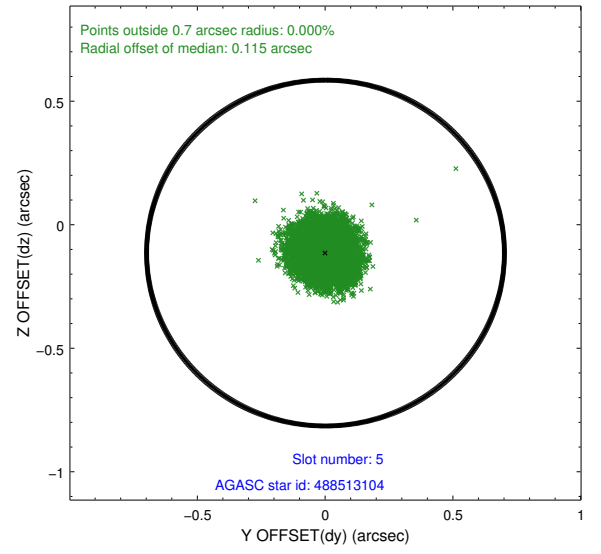
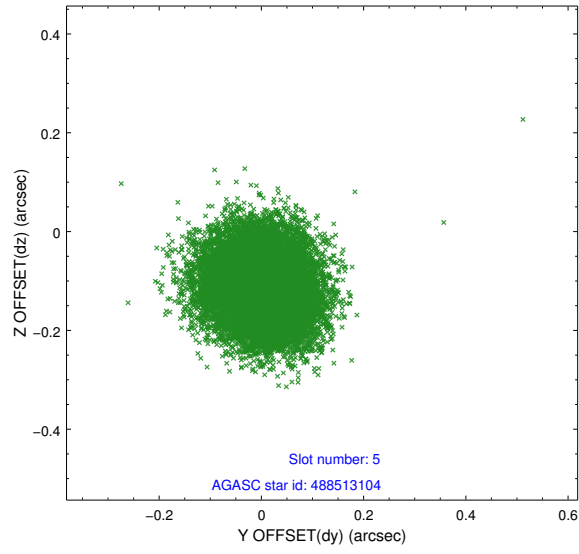
2.4.1 Slot 3



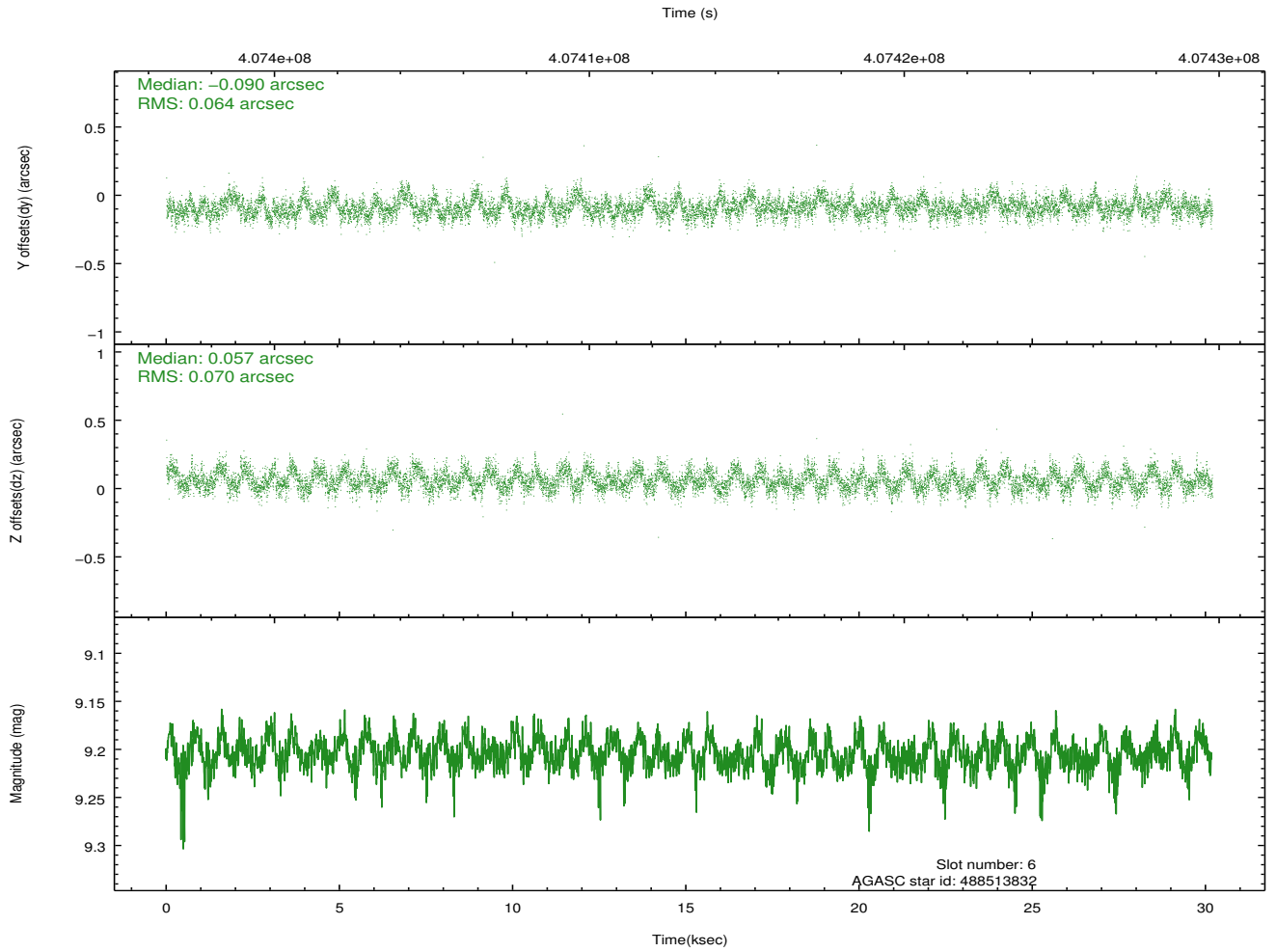
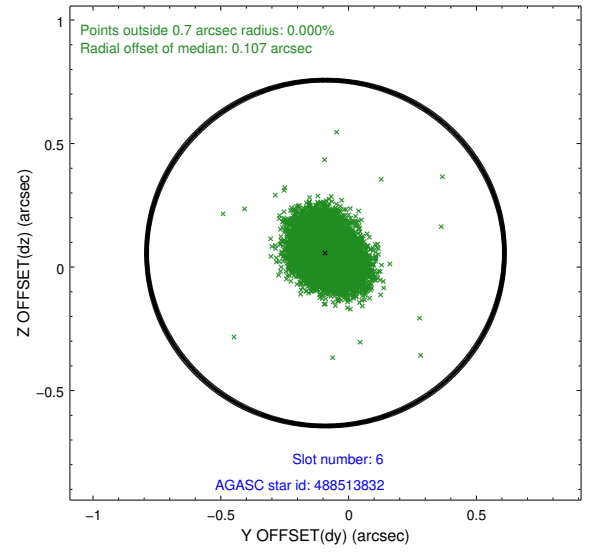
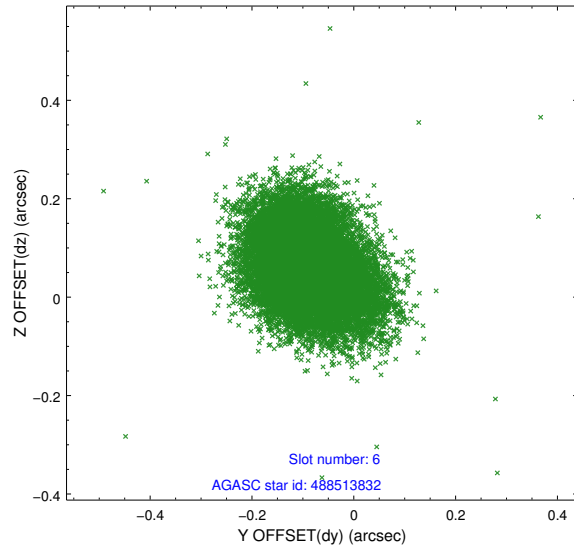
2.4.2 Slot 4



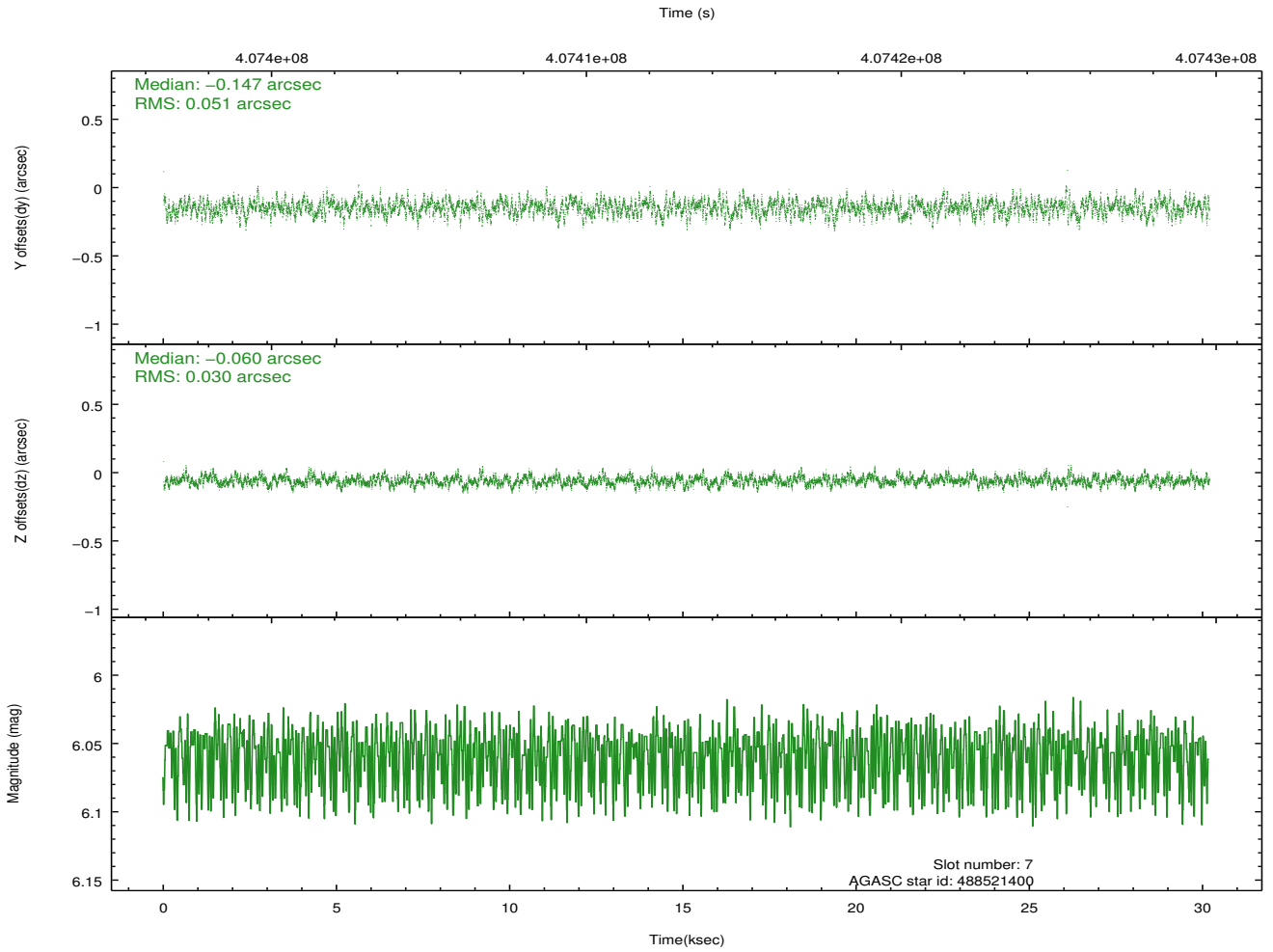
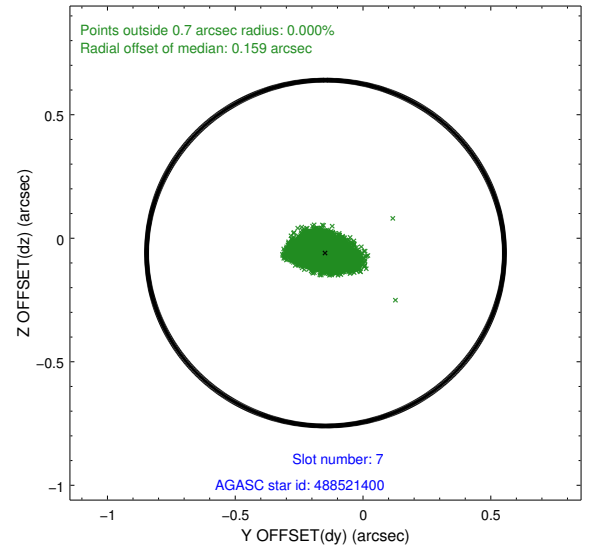
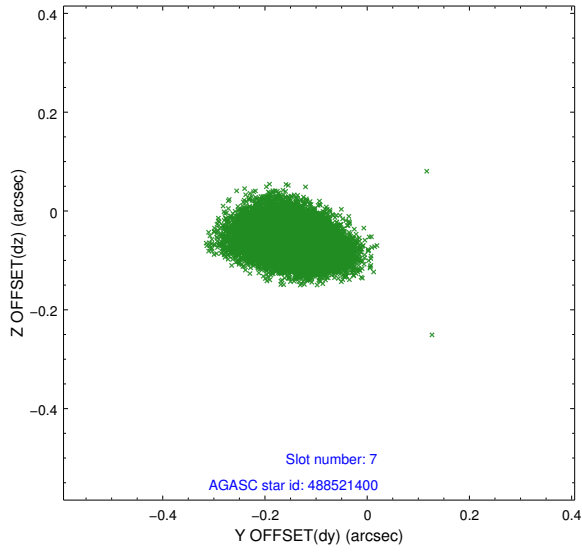
2.4.3 Slot 5



2.4.4 Slot 6

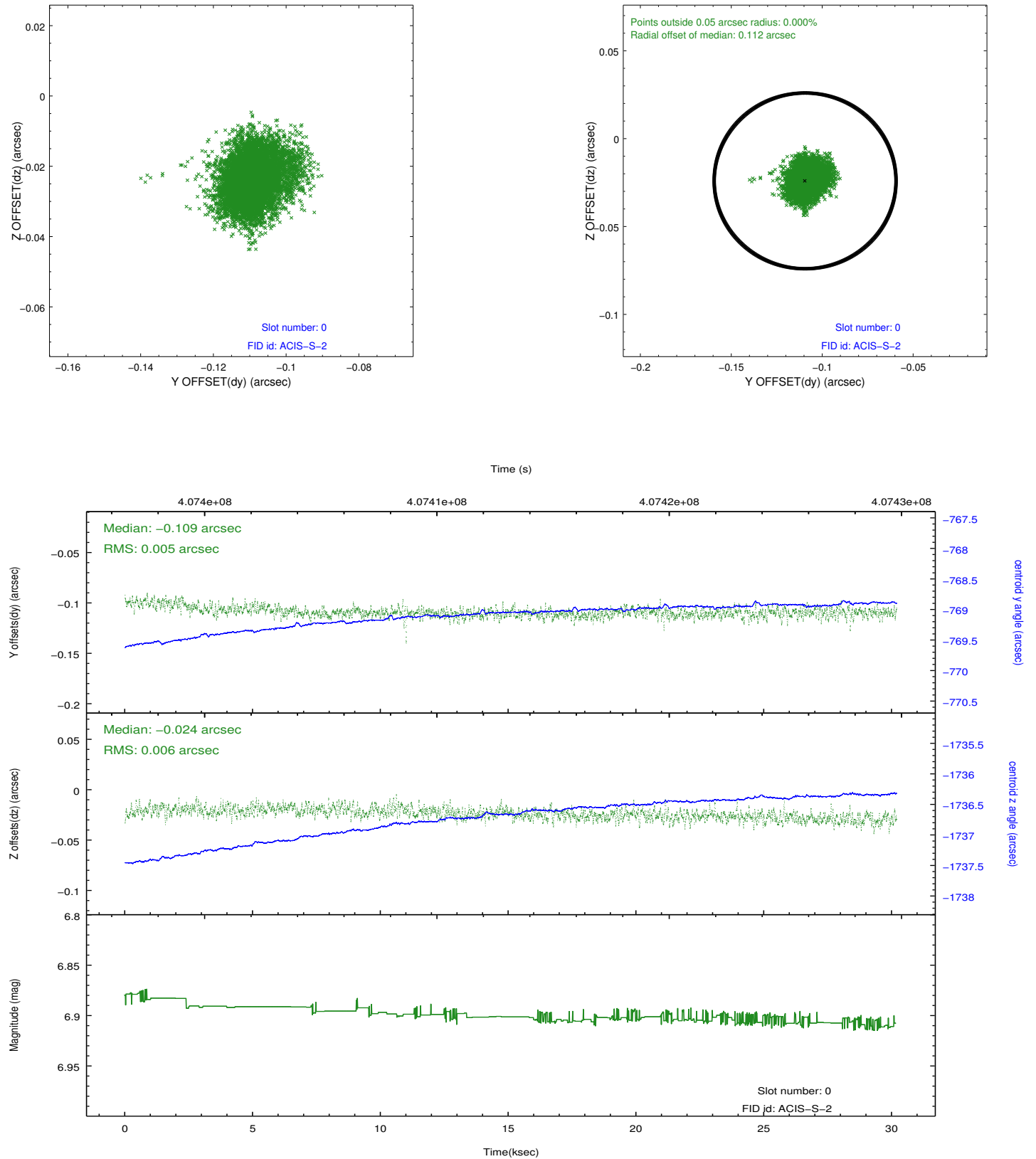


2.4.5 Slot 7

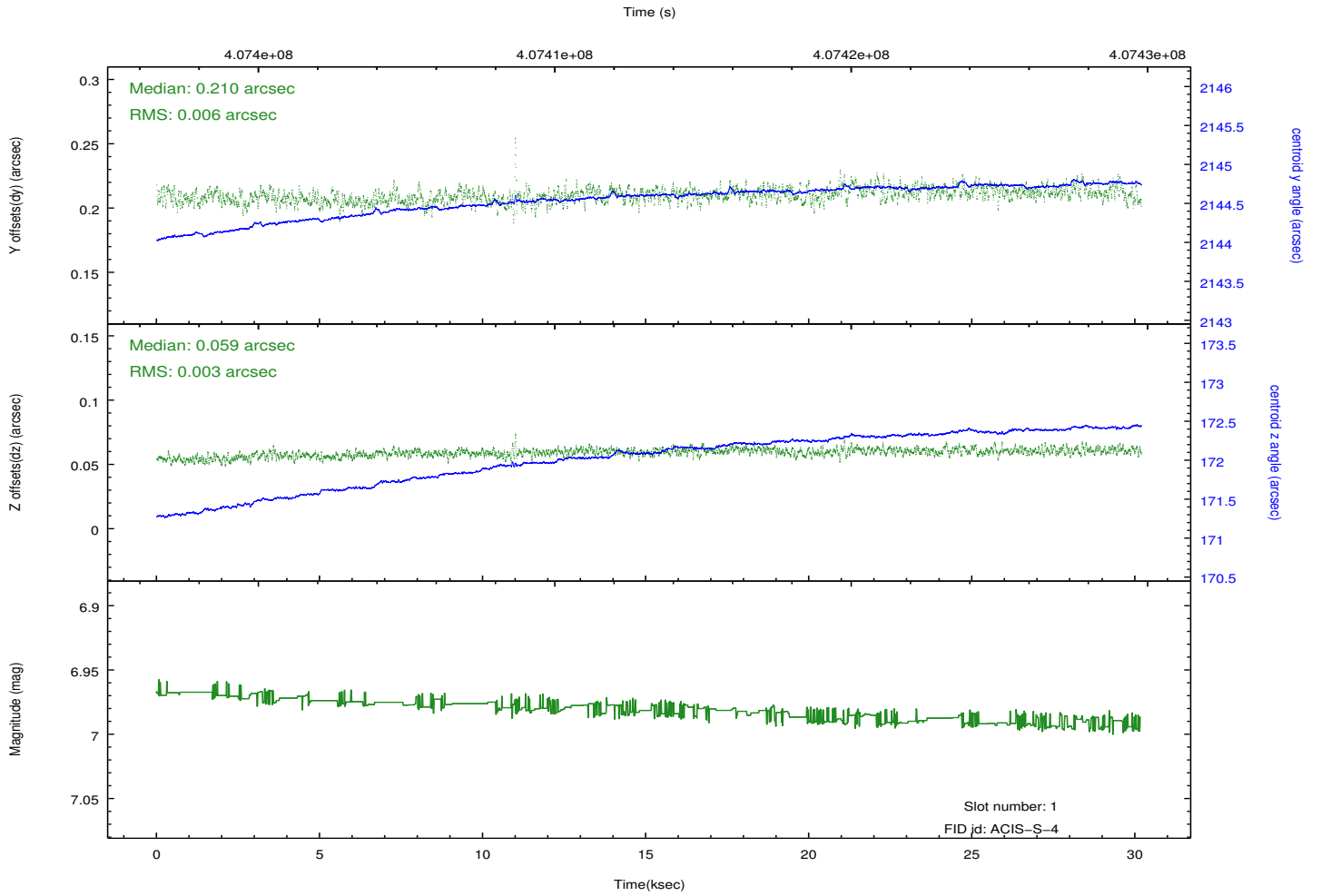
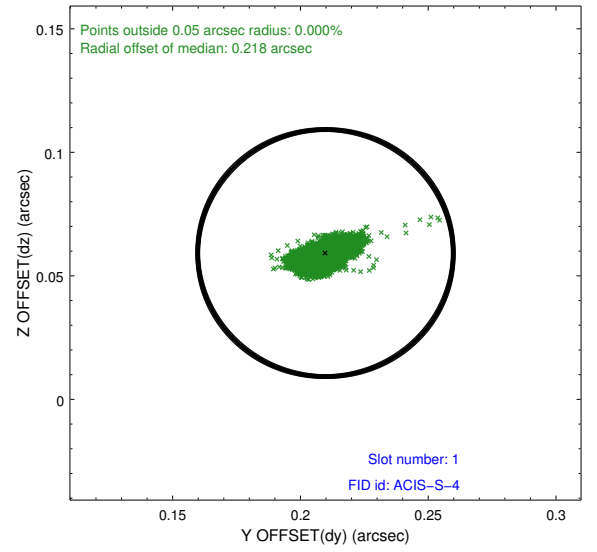
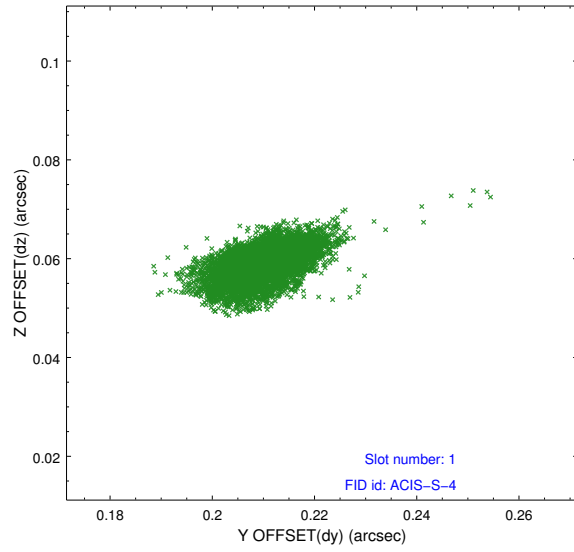


2.5 FID Slots

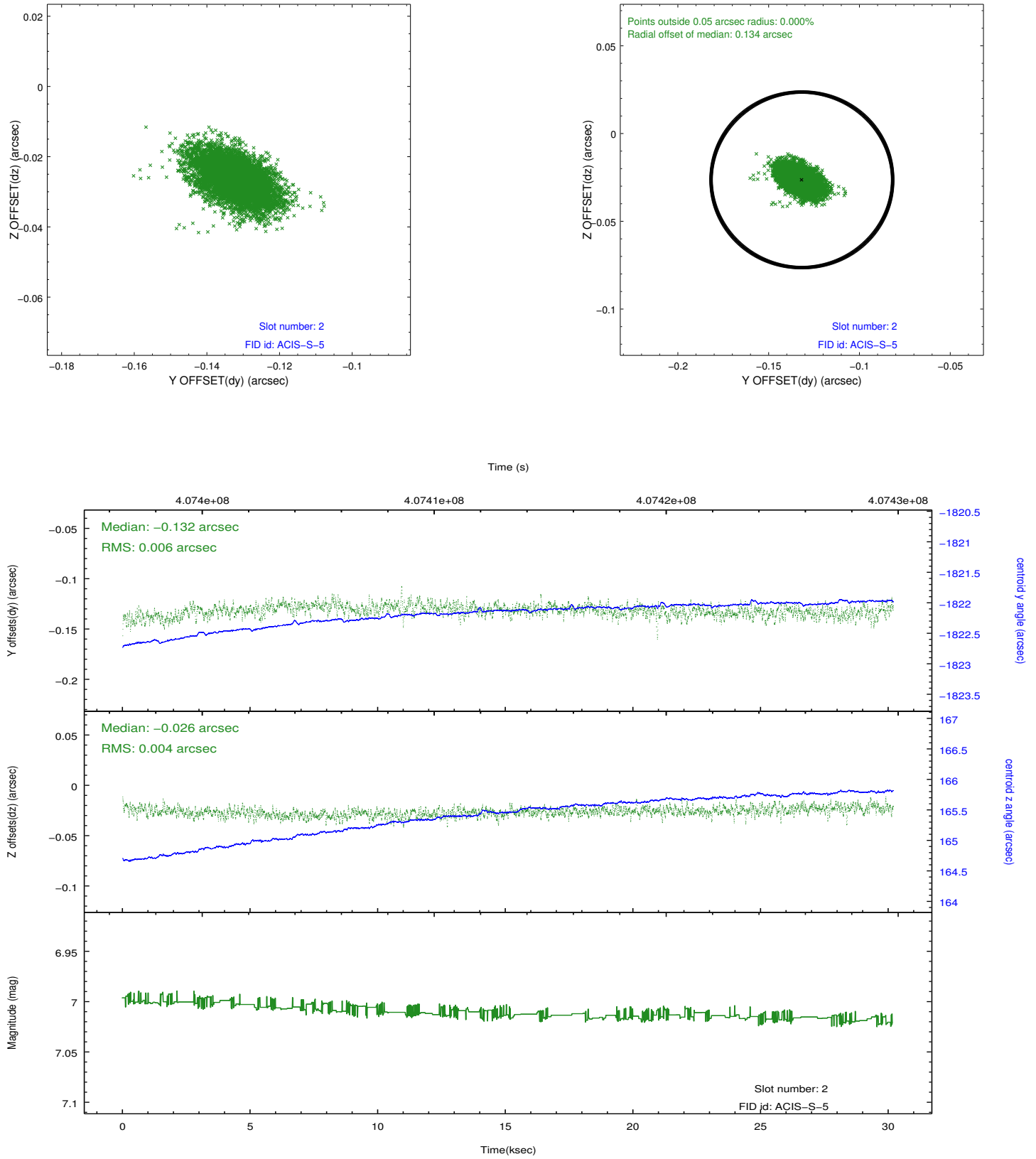
2.5.1 Slot 0



2.5.2 Slot 1



2.5.3 Slot 2



A Summary

A.1 Status

V&V Scientist	Jen Lauer
V&V Date (YYYY-MM-DD)	2012.07.17
V&V Edition	1
V&V Disposition and Status	OK
V&V Charge Time	30.009911800086

A.2 Comments