

# V&V Reference Report

## L2 ASCDS Version : 8.4.5

Observation 11798 - L2 Version 2  
Chandra X-Ray Center

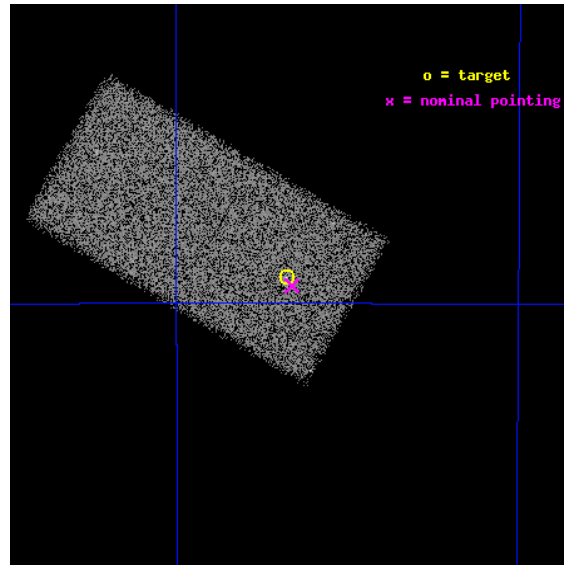
L2 Processing Date : Jun 18 2012

## Contents

<b>1</b>	<b>Front</b>	<b>2</b>
<b>2</b>	<b>OBI</b>	<b>3</b>
2.1	OBI . . . . .	3
2.1.1	Images . . . . .	3
2.1.2	Bias . . . . .	3
2.1.3	Parameters . . . . .	4
2.1.4	Events . . . . .	4
2.2	Compared Parameters . . . . .	5
2.3	Aspect . . . . .	6
2.4	Star Slots . . . . .	9
2.4.1	Slot 3 . . . . .	9
2.4.2	Slot 4 . . . . .	10
2.4.3	Slot 5 . . . . .	11
2.4.4	Slot 6 . . . . .	12
2.4.5	Slot 7 . . . . .	13
2.5	FID Slots . . . . .	14
2.5.1	Slot 0 . . . . .	14
2.5.2	Slot 1 . . . . .	15
2.5.3	Slot 2 . . . . .	16
<b>A</b>	<b>Summary</b>	<b>17</b>
A.1	Status . . . . .	17
A.2	Comments . . . . .	17

# 1 Front

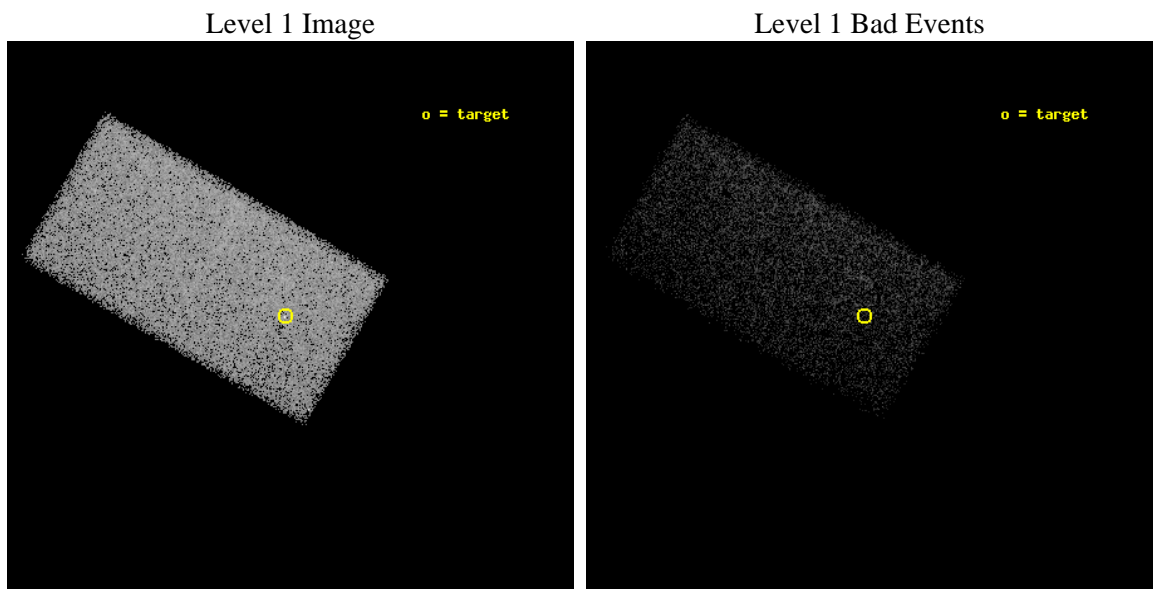
seq_num	600731	Sequence number
obs_id	11798	Observation id
title	Merger-Induced X-ray Emission in the Superantennae	Proposal title
observer	Dr. Andrew Ptak	Principal investigator
object	Superantennae	Source name
dtcycle	0	&#160
cycle	P	events from which exps? Prim/Second/Both
ra_targ	292.839167	Observer's specified target RA [deg]
dec_targ	-72.655	Observer's specified target Dec [deg]
ra_nom	292.83148011821	Nominal RA [deg]
dec_nom	-72.659260296661	Nominal Dec [deg]
roll_nom	210.14929859255	Nominal Roll [deg]
revision	2	Processing version of data
ontime	12135.0	Sum of GTIs [s]
livetime	11811.828375642	Livetime [s]
ontime7	12135.0	Sum of GTIs [s]
l2events	39135	Number of level 2 events



## 2 OBI

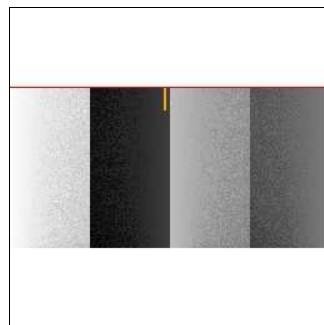
### 2.1 OBI

#### 2.1.1 Images



#### 2.1.2 Bias

Chip 7



### 2.1.3 Parameters

obi_num	0	Obi number	sched_exp_time	12000.000000	[s] Scheduled observation exposure time
ascdsver	8.4.5	Processing system revision	ontime	12135.0	Sum of GTIs [s]
caldsver	4.4.10	&#160	ontime7	12135.0	Sum of GTIs [s]
date	2012-06-18T07:42:32	Date and time of file creation	l1events	100430	Number of level 1 events
revision	2	Processing version of data			

### 2.1.4 Events

	<b>ccd 7</b>
level 1 events	100430
rejected events	60253
rejected %	59%

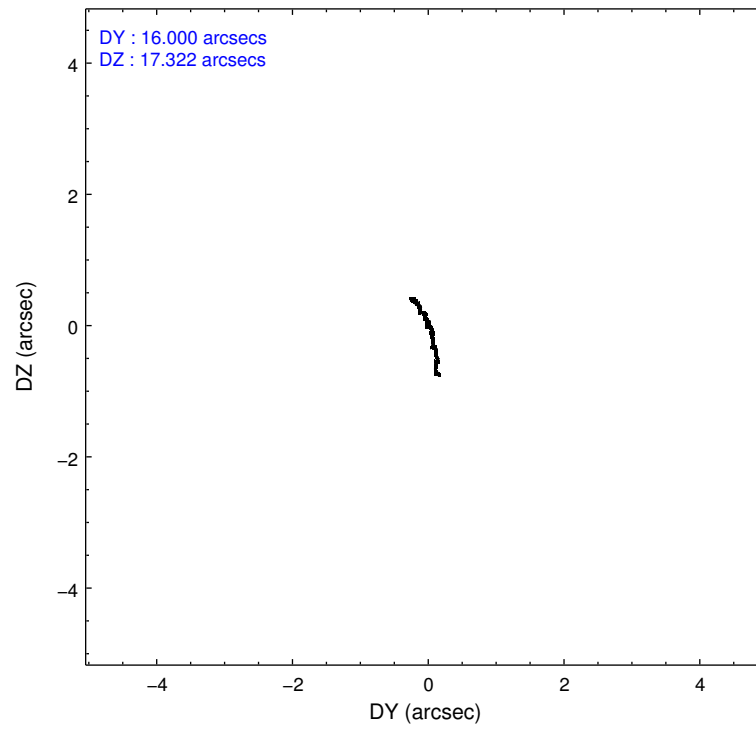
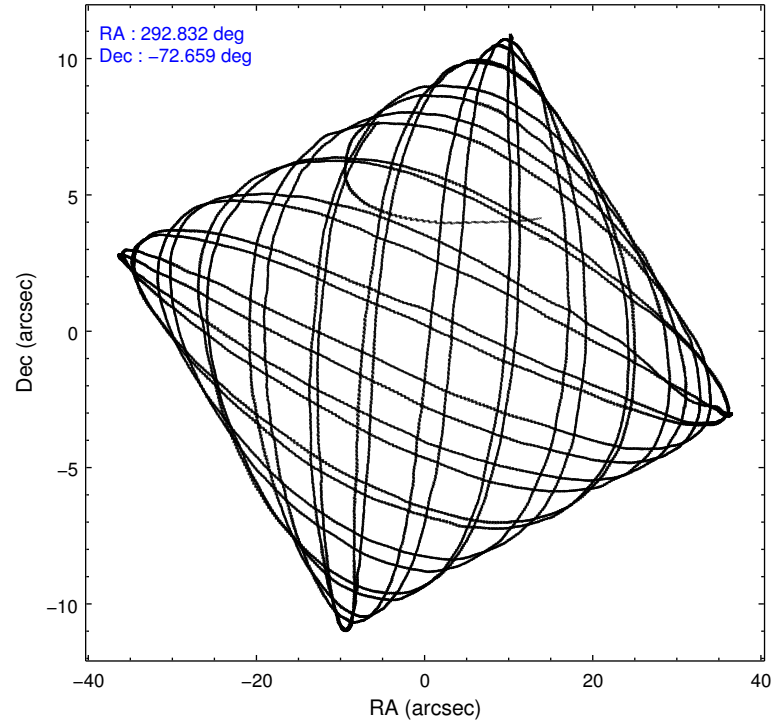
	<b>ccd 7</b>
grade 0 events	4267
	4%
grade 1 events	117
	0%
grade 2 events	9347
	9%
grade 3 events	4150
	4%
grade 4 events	4159
	4%
grade 5 events	9566
	9%
grade 6 events	22452
	22%
grade 7 events	46372
	46%

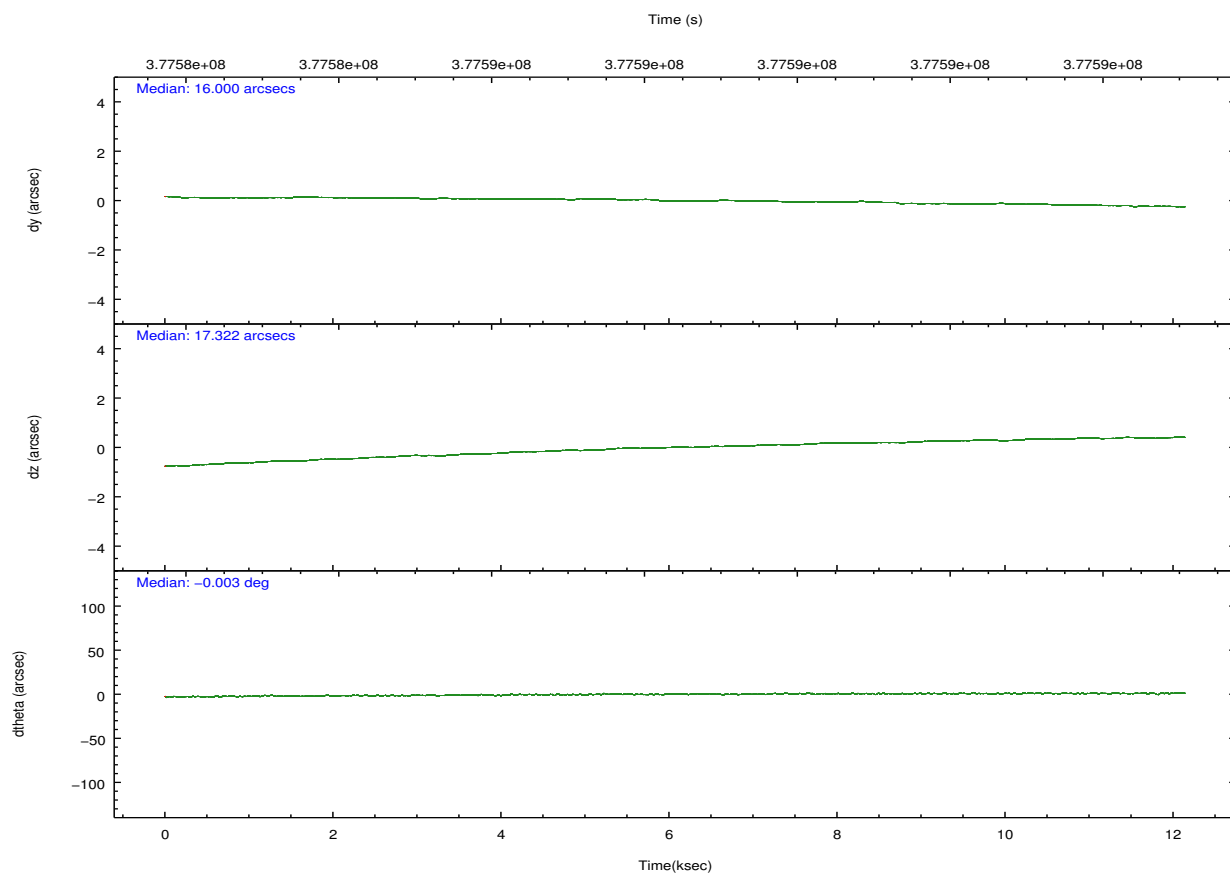
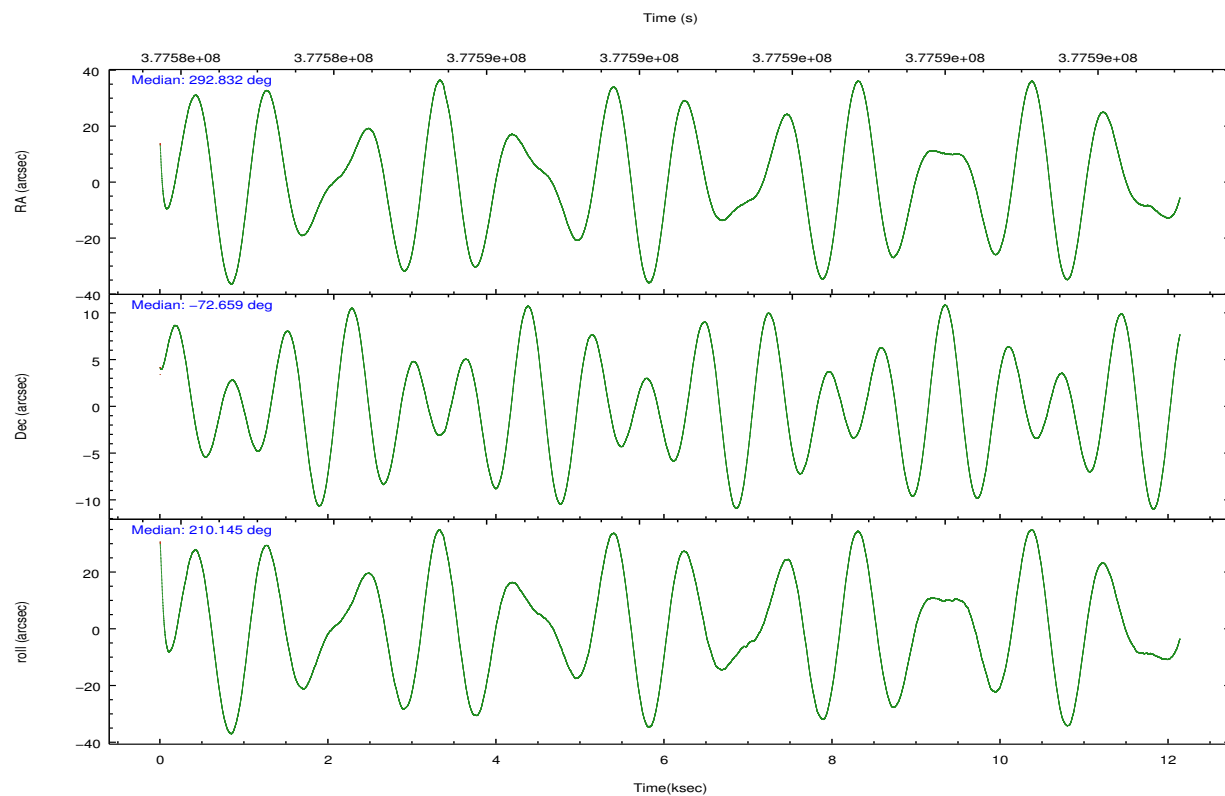


## 2.2 Compared Parameters

Parameter	Planned	Actual	Parameter	Planned	Actual
Instrument	ACIS	ACIS	Obspar format version number	7	7
Detector	ACIS-7	ACIS-7	Obspar file type	PREDICTED	ACTUAL
Grating	NONE	NONE	Obspar update status	NONE	UPDATED
Data mode	FAINT	FAINT	Number of optional ACIS chips dropped	0	0
Observation mode	POINTING	POINTING	On-chip summing requested	N	N
[deg] Pointing RA	292.875997	292.8314801182073	Subarray requested	CUSTOM	1/2
[deg] Pointing Dec	-72.635377	-72.65926029666112	Subarray start row	257	257
[deg] Pointing Roll	210.035156	210.1492985925537	Subarray row count	512	512
[mm] SIM focus pos	-0.684267	-0.6828225247311905	Alternating exposures requested	N	N
[mm] SIM defocus	0	0.001444936568705701	[s] Primary exposure time	0.000000	1.5
[mm] SIM translation stage pos	-190.132523	-190.1425803651734			
[mm] SIM translation stage offset	0	0.01005778216563158			
[s] Observation start time (MET)	377582477.184000	377581052.90559			
Observation start date	2009-12-19T04:00:11	2009-12-19T03:37:32			
[s] Observation end time (MET)	377594477.184000	377596008.16885			
Observation end date	2009-12-19T07:20:11	2009-12-19T07:46:48			
Read mode	TIMED	TIMED			

## 2.3 Aspect



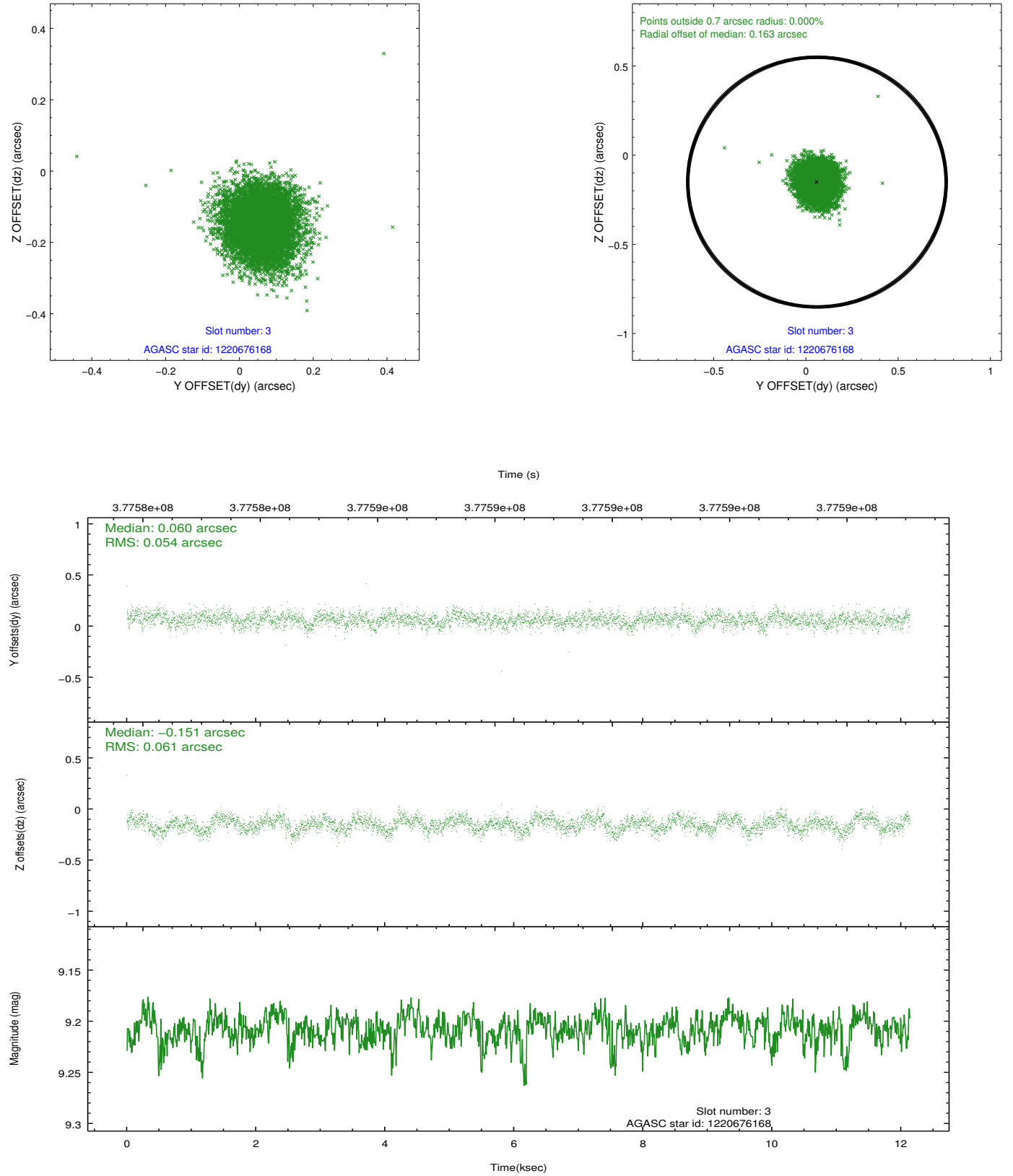


### Slot Statistics

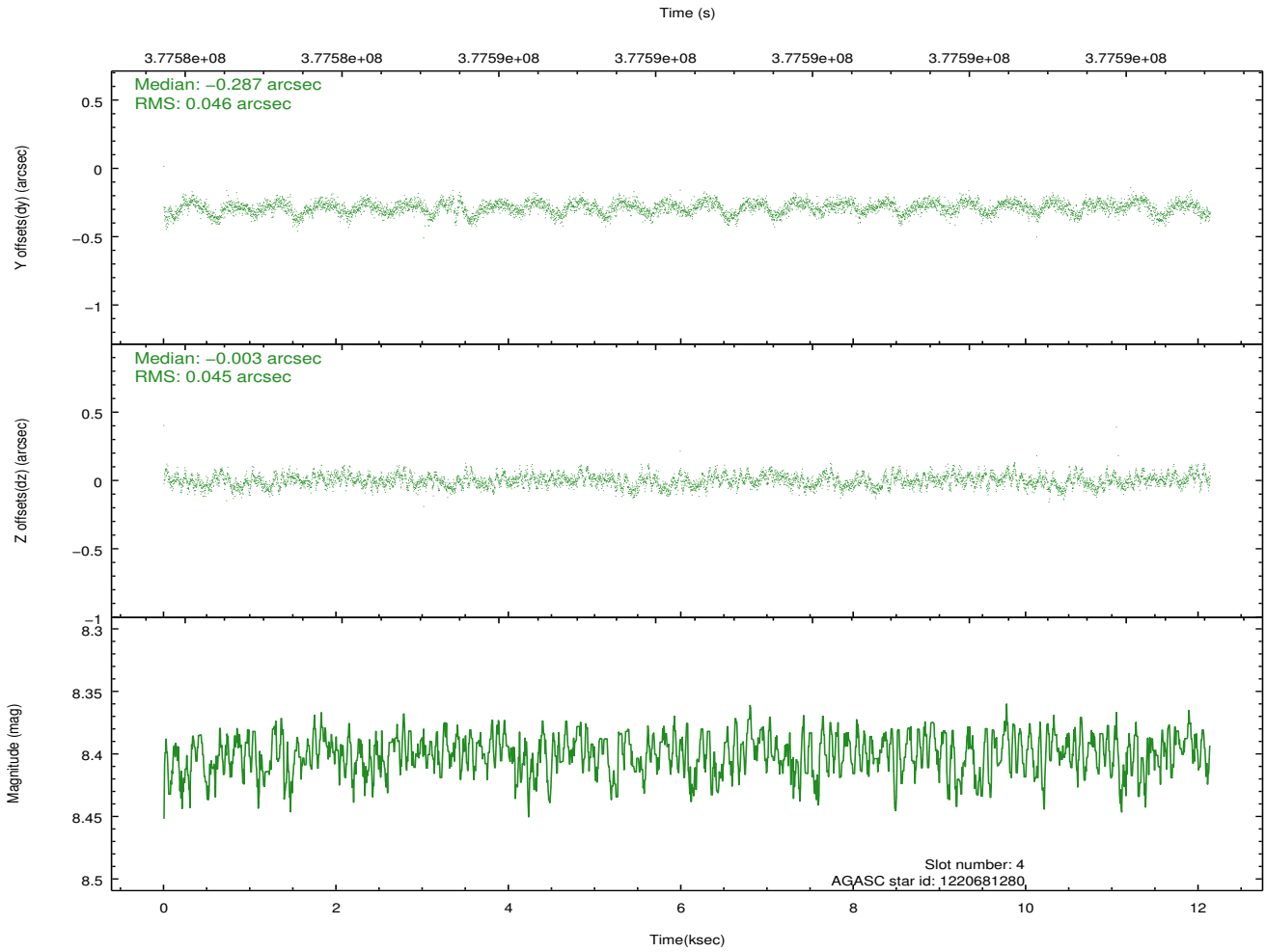
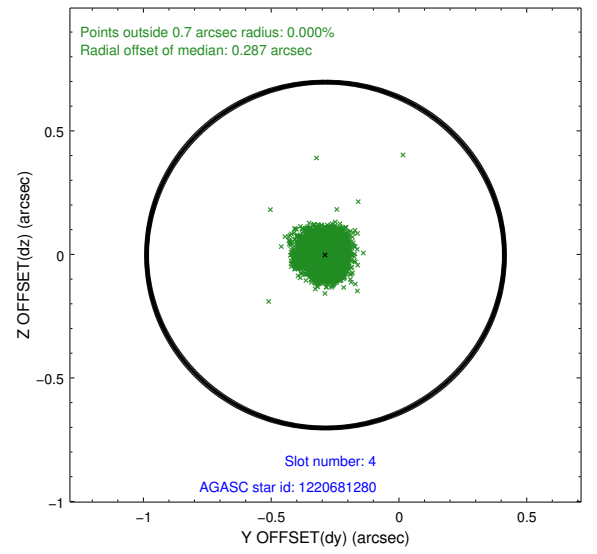
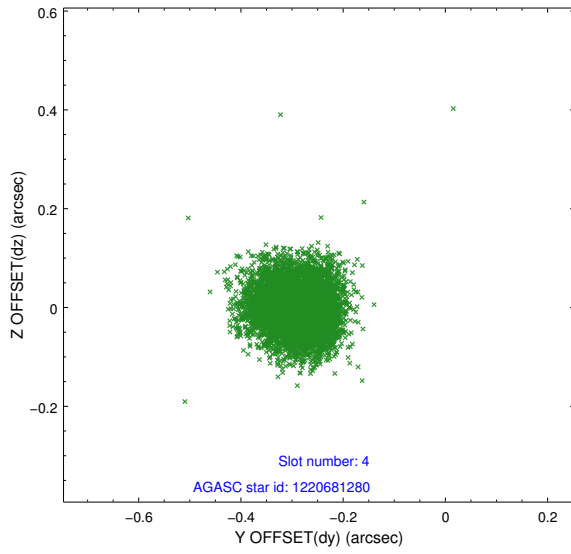
slot	status	id	mag	n_pts	med_dy	med_dz	dr1	dr2	ra	dec	mean_y	mean_z
0	FID	ACIS-S-2	6.89	2961	-0.074	-0.036	0.010	0.019	0.000000	0.000000	-769.09	-1738.67
1	FID	ACIS-S-4	6.98	2961	0.169	0.045	0.005	0.011	0.000000	0.000000	2144.28	169.41
2	FID	ACIS-S-5	7.01	2961	-0.125	-0.000	0.010	0.018	0.000000	0.000000	-1821.42	163.58
3	GUIDE	1220676168	9.21	5913	0.060	-0.151	0.087	0.137	290.888048	-72.413188	1489.92	-1743.13
4	GUIDE	1220681280	8.40	5918	-0.287	-0.003	0.068	0.109	293.313249	-72.100490	-1381.23	-1423.35
5	GUIDE	1220685504	7.37	5921	0.281	0.397	0.069	0.110	292.045880	-73.090627	1576.27	989.71
6	GUIDE	1221198432	9.06	5915	-0.125	-0.207	0.096	0.153	292.771774	-73.144093	1011.42	1531.57
7	GUIDE	1220676208	9.23	5916	0.076	-0.033	0.110	0.186	292.467232	-71.973323	-796.83	-2289.38

## 2.4 Star Slots

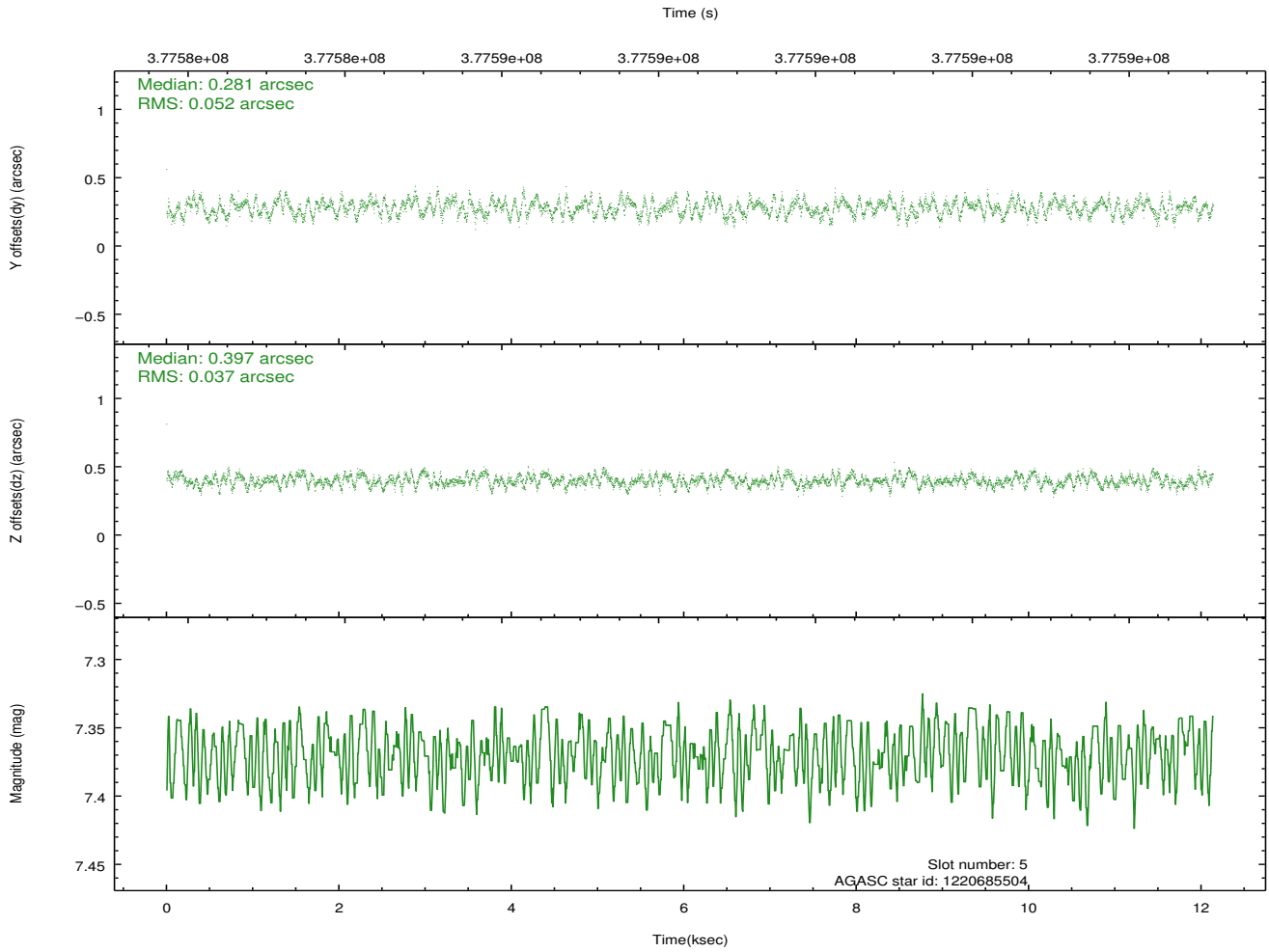
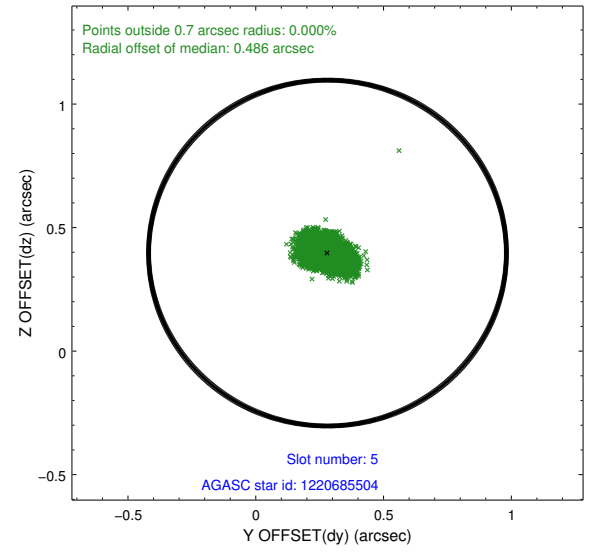
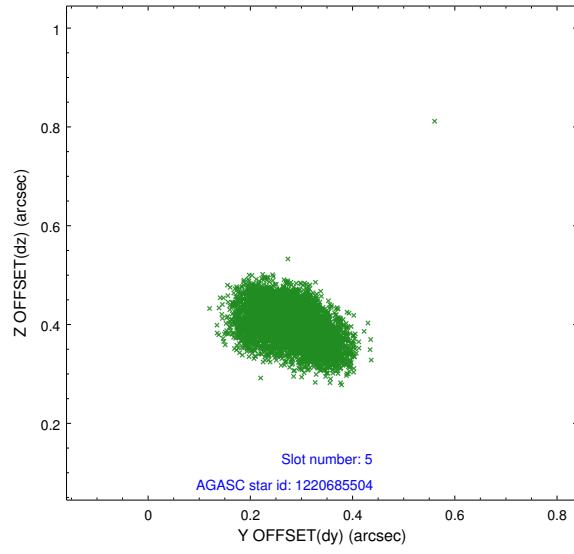
### 2.4.1 Slot 3



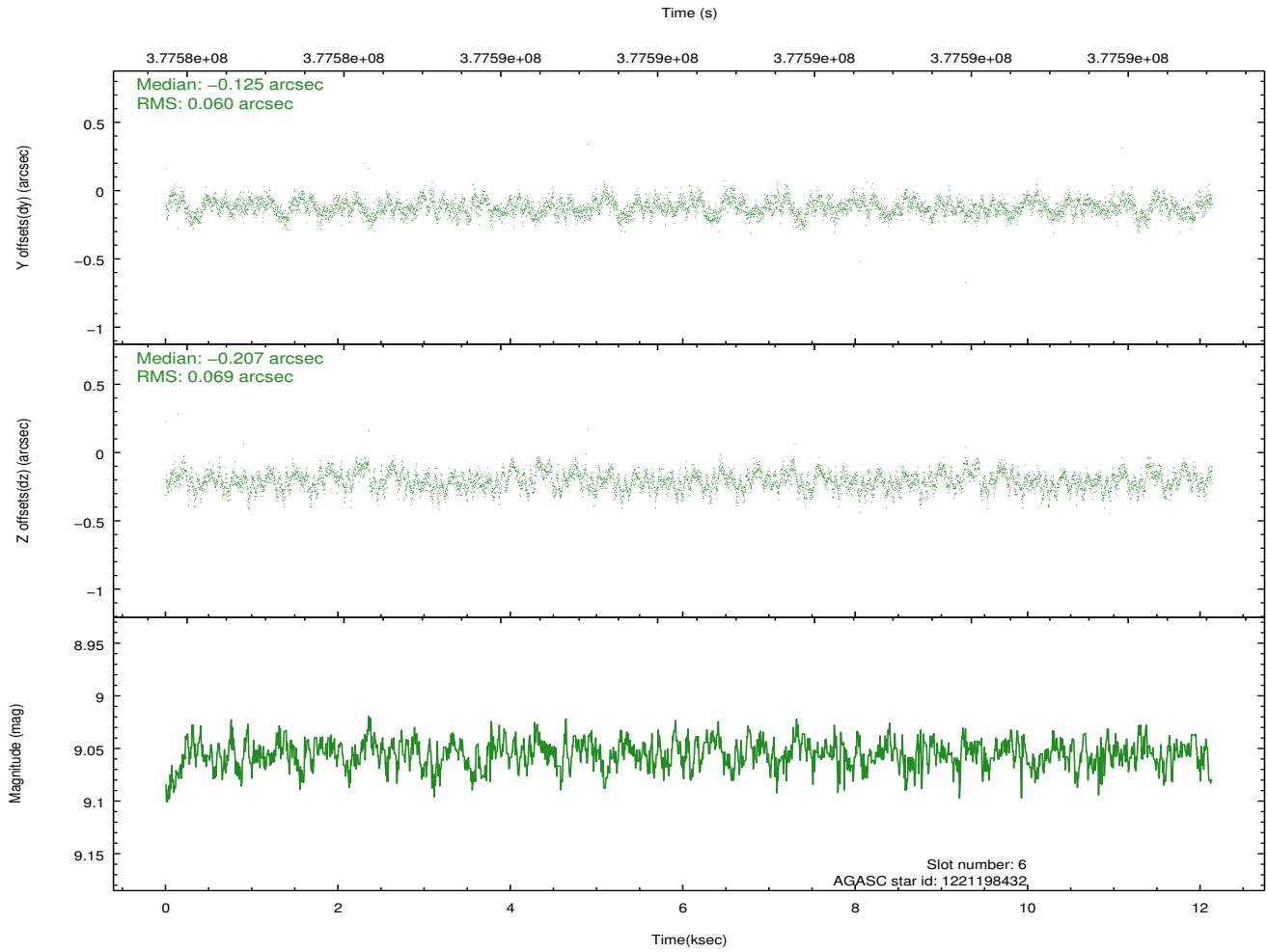
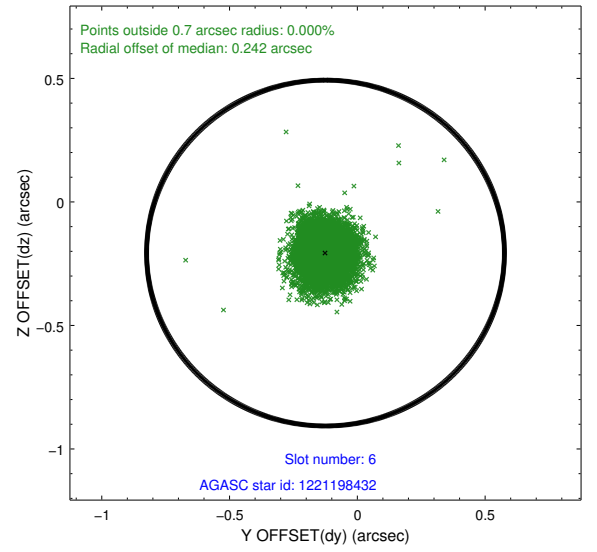
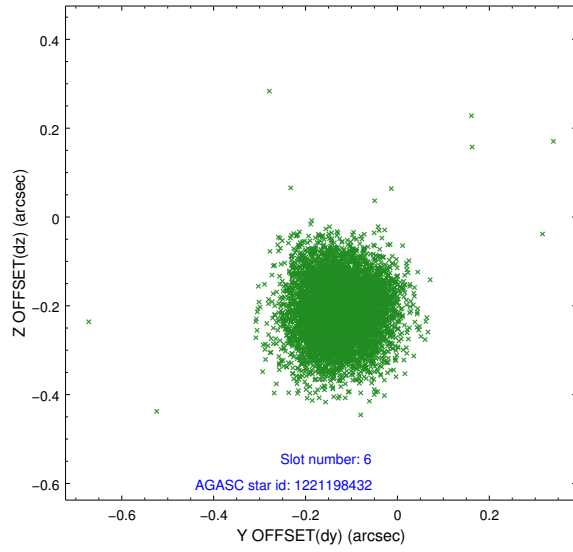
## 2.4.2 Slot 4



### 2.4.3 Slot 5

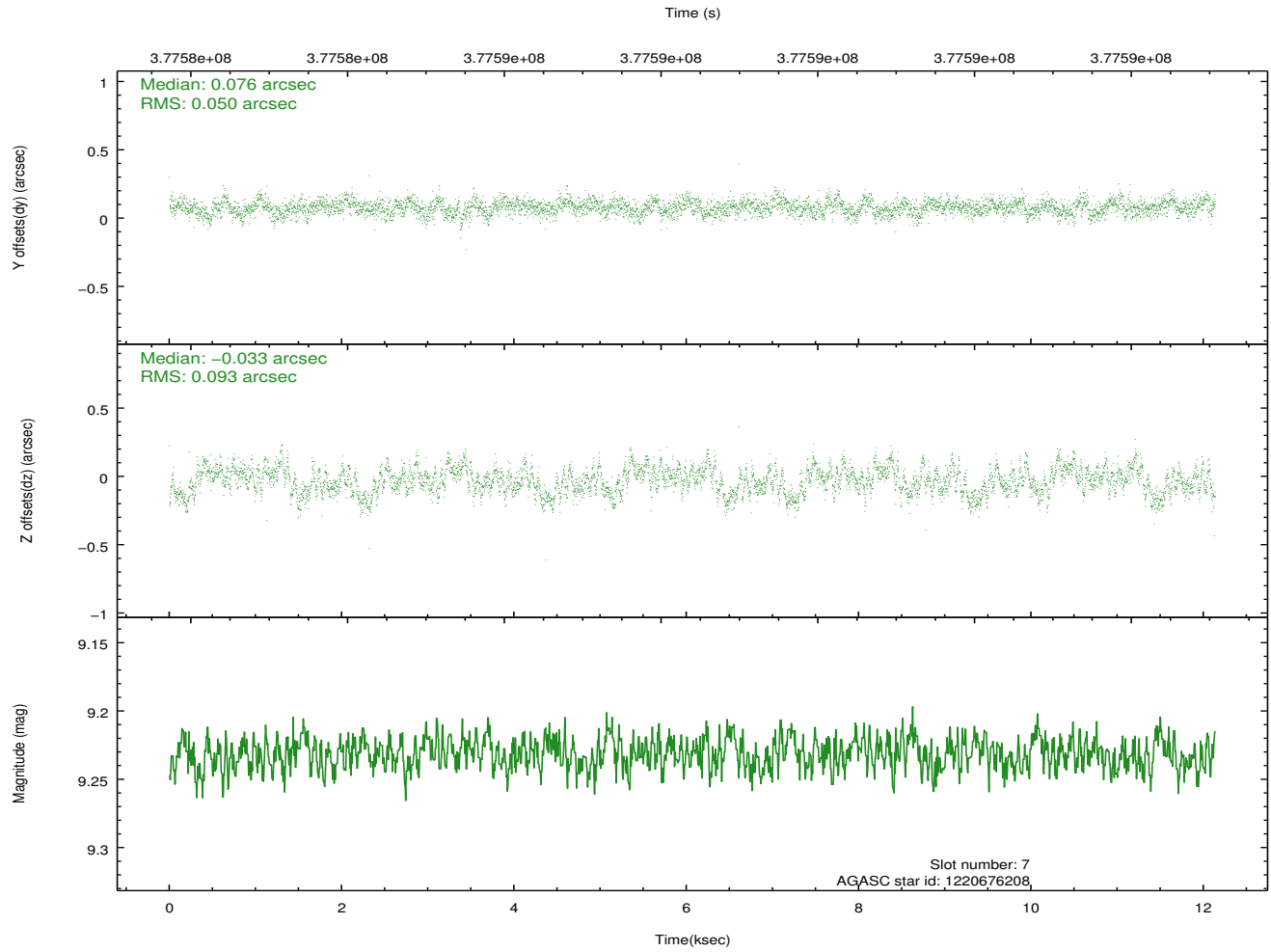
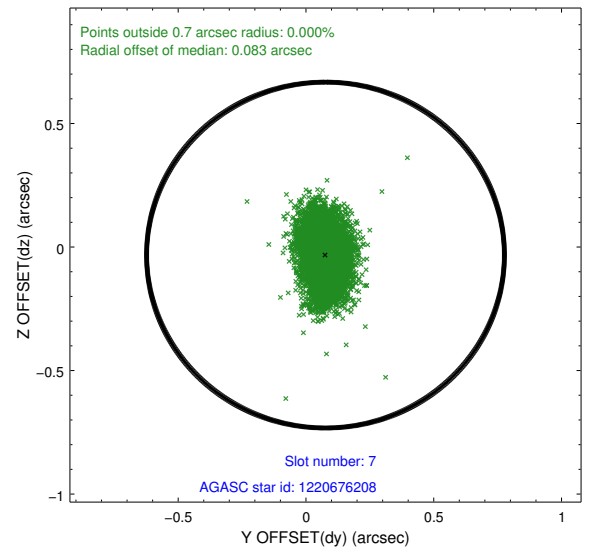
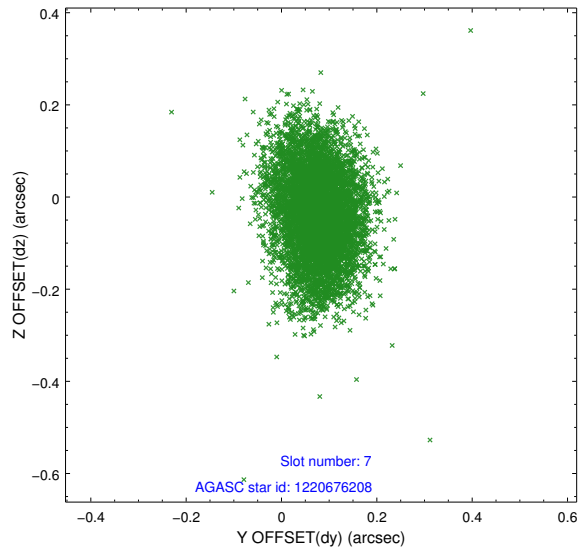


## 2.4.4 Slot 6



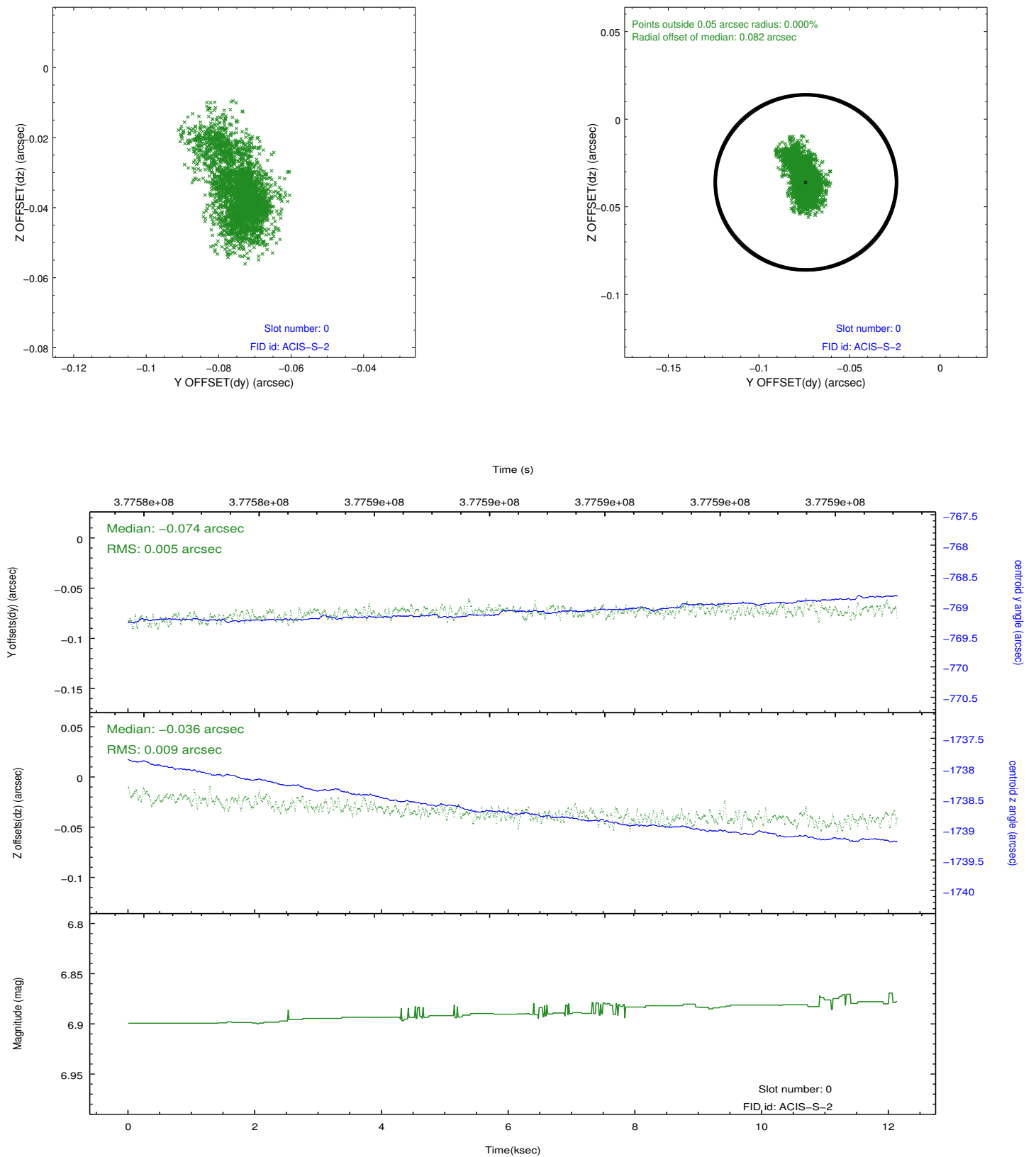


## 2.4.5 Slot 7

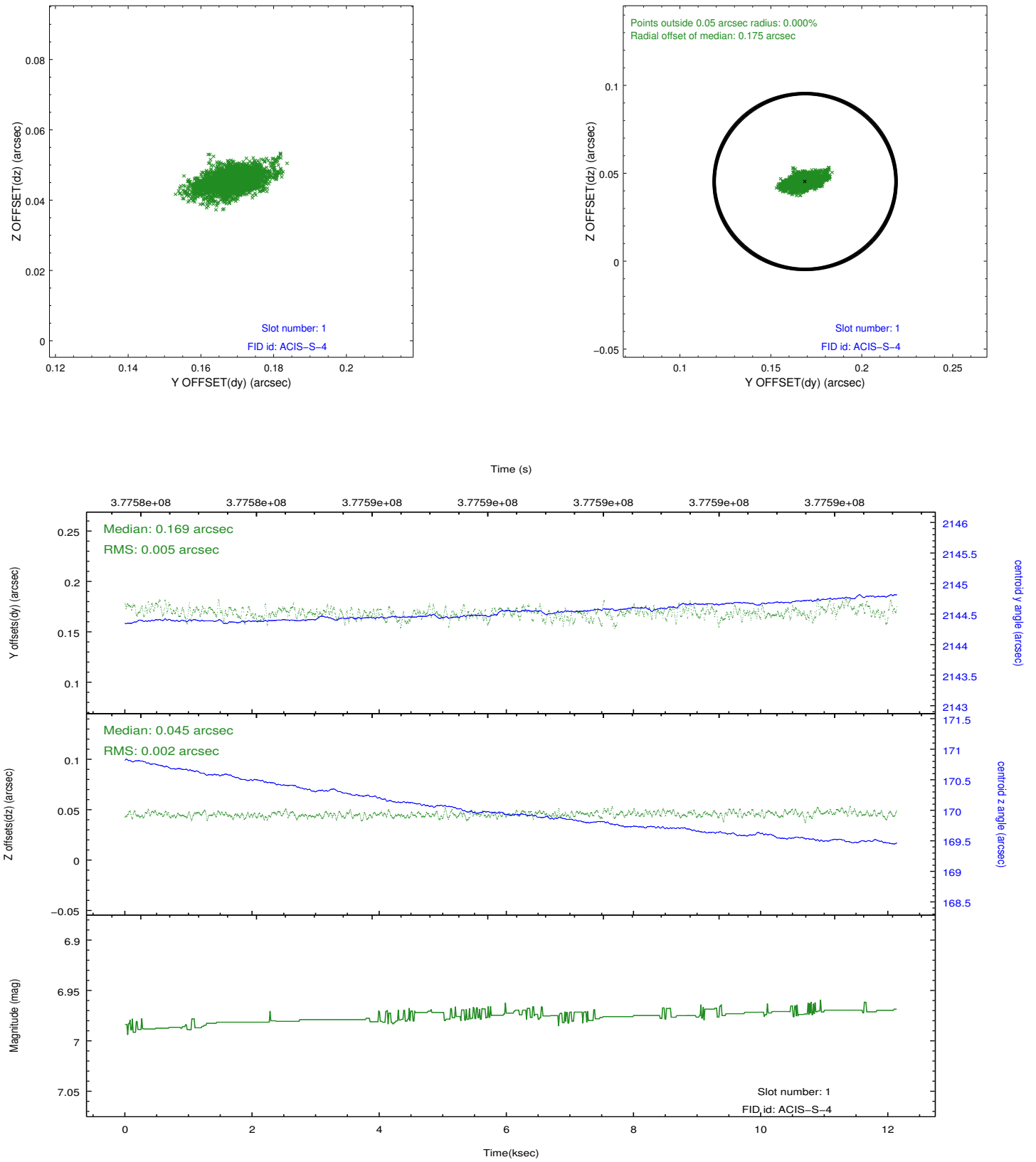


## 2.5 FID Slots

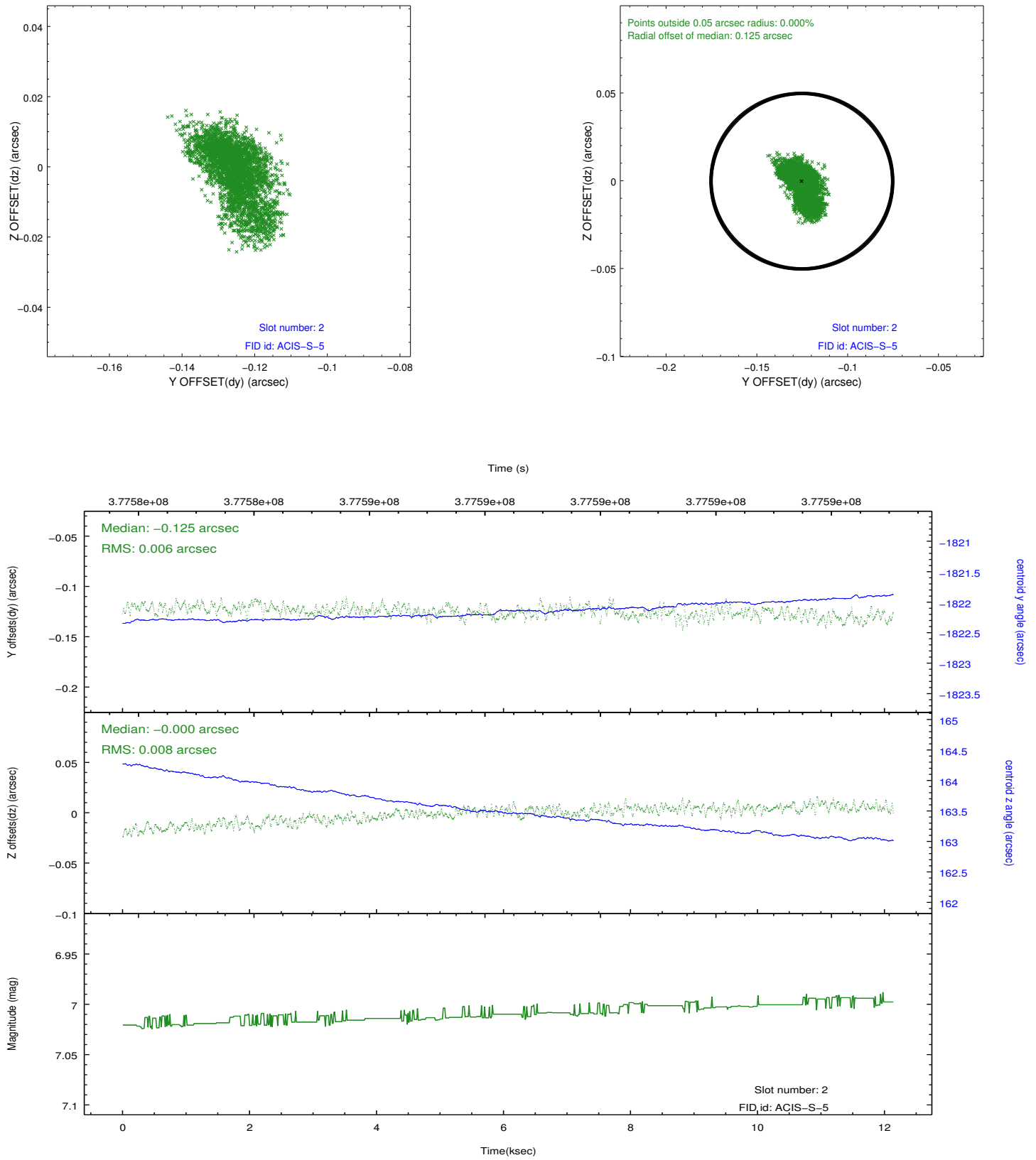
### 2.5.1 Slot 0



## 2.5.2 Slot 1



### 2.5.3 Slot 2



## A Summary

### A.1 Status

V&V Scientist	Beth Sundheim
V&V Date (YYYY-MM-DD)	2012.06.21
V&V Edition	1
V&V Disposition and Status	OK
V&V Charge Time	12.135

### A.2 Comments