

V&V Reference Report

L2 ASCDS Version : 8.4.5

Observation 11768 - L2 Version 2
Chandra X-Ray Center

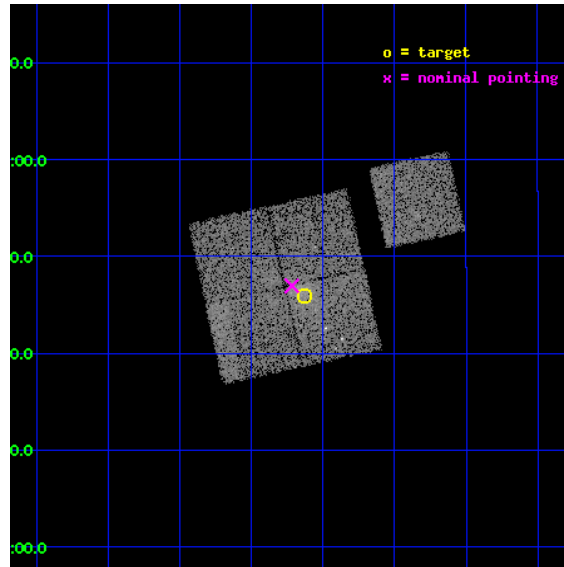
L2 Processing Date : Jun 15 2012

Contents

1	Front	2
2	OBI	3
2.1	OBI	3
2.1.1	Images	3
2.1.2	Bias	3
2.1.3	Parameters	4
2.1.4	Events	4
2.2	Compared Parameters	5
2.3	Aspect	6
2.4	Star Slots	9
2.4.1	Slot 3	9
2.4.2	Slot 4	10
2.4.3	Slot 5	11
2.4.4	Slot 6	12
2.4.5	Slot 7	13
2.5	FID Slots	14
2.5.1	Slot 0	14
2.5.2	Slot 1	15
2.5.3	Slot 2	16
A	Summary	17
A.1	Status	17
A.2	Comments	17

1 Front

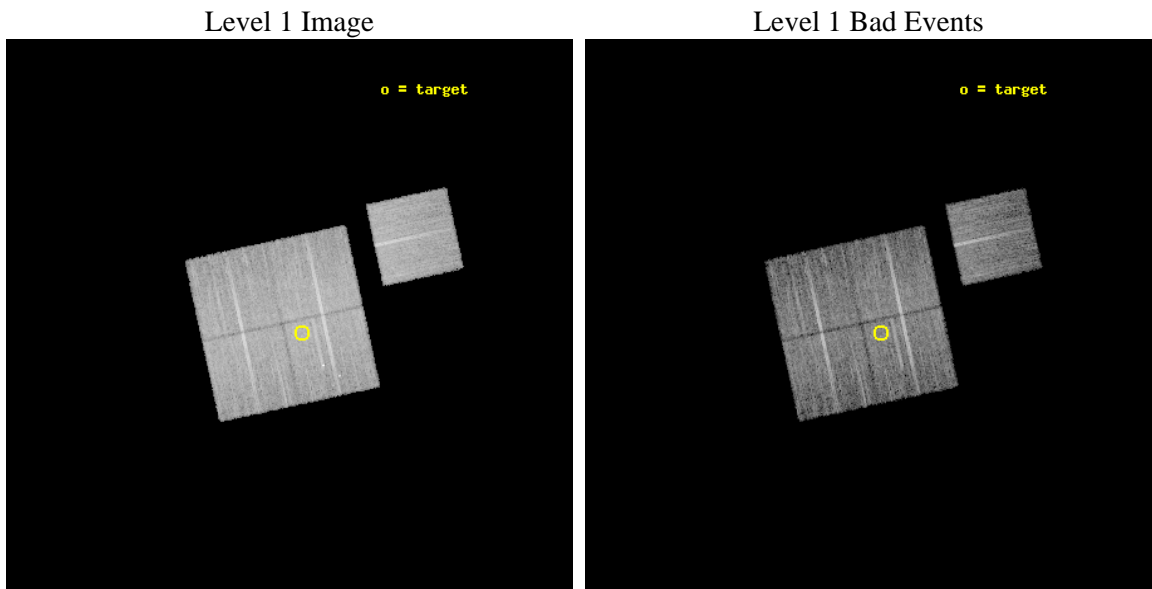
seq_num	800908	Sequence number
obs_id	11768	Observation id
title	The X-Ray, SZ, and Optical Scaling Relations of Massive Galaxy Clusters	Proposal title
observer	Dr. Eli Rykoff	Principal investigator
object	SDSS J0922+0345	Source name
dtcycle	0	
cycle	P	events from which exps? Prim/Second/Both
ra_targ	140.532083	Observer's specified target RA [deg]
dec_targ	3.766333	Observer's specified target Dec [deg]
ra_nom	140.55467340052	Nominal RA [deg]
dec_nom	3.7828611515424	Nominal Dec [deg]
roll_nom	77.741629134217	Nominal Roll [deg]
revision	2	Processing version of data
ontime	10042.896974325	Sum of GTIs [s]
livetime	9911.6791318824	Livetime [s]
ontime0	10042.773874283	Sum of GTIs [s]
ontime1	10045.955884576	Sum of GTIs [s]
ontime2	10042.855934381	Sum of GTIs [s]
ontime3	10042.896974325	Sum of GTIs [s]
ontime6	10039.591824055	Sum of GTIs [s]
l2events	40821	Number of level 2 events



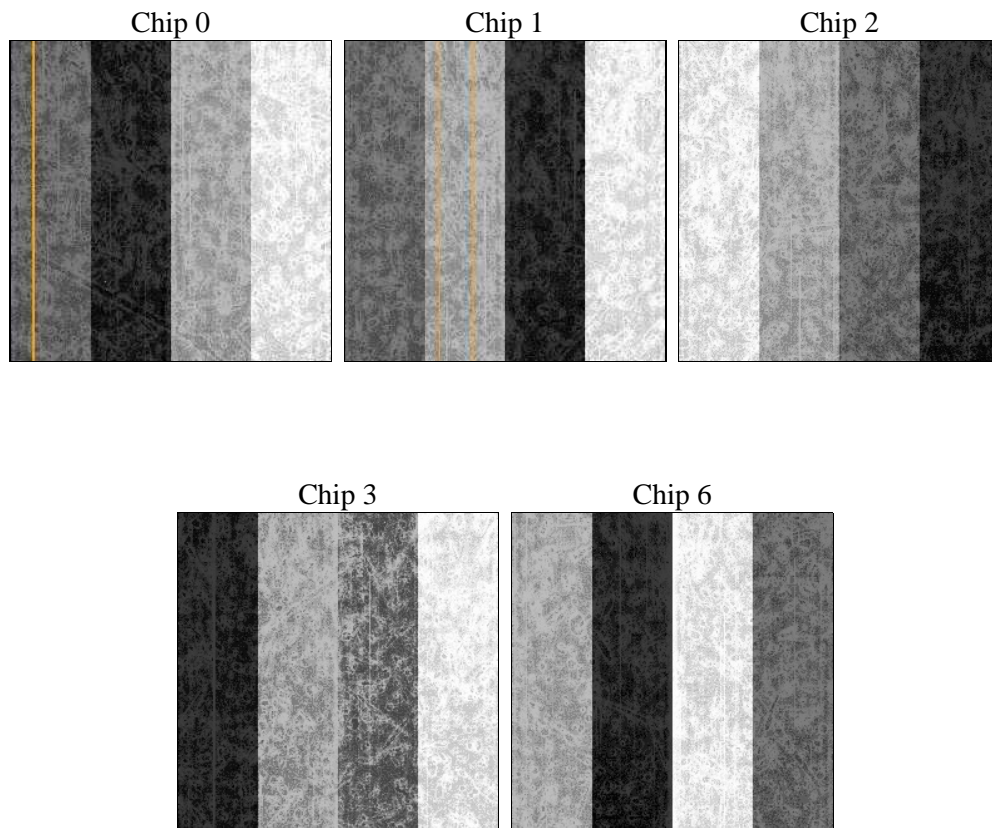
2 OBI

2.1 OBI

2.1.1 Images



2.1.2 Bias



2.1.3 Parameters

obi_num	0	Obi number	sched_exp_time	10000.000000	[s] Scheduled observation exposure time
ascdsver	8.4.5	Processing system revision	ontime	10042.896974325	Sum of GTIs [s]
caldbver	4.4.10	 	ontime0	10042.773874283	Sum of GTIs [s]
date	2012-06-15T13:32:06	Date and time of file creation	ontime1	10045.955884576	Sum of GTIs [s]
revision	2	Processing version of data	ontime2	10042.855934381	Sum of GTIs [s]
			ontime3	10042.896974325	Sum of GTIs [s]
			ontime6	10039.591824055	Sum of GTIs [s]
			l1events	431851	Number of level 1 events

2.1.4 Events

	ccd 0	ccd 1	ccd 2	ccd 3	ccd 6
level 1 events	81153	83678	92069	89589	85362
rejected events	72030	73508	82950	78649	76193
rejected %	88%	87%	90%	87%	89%

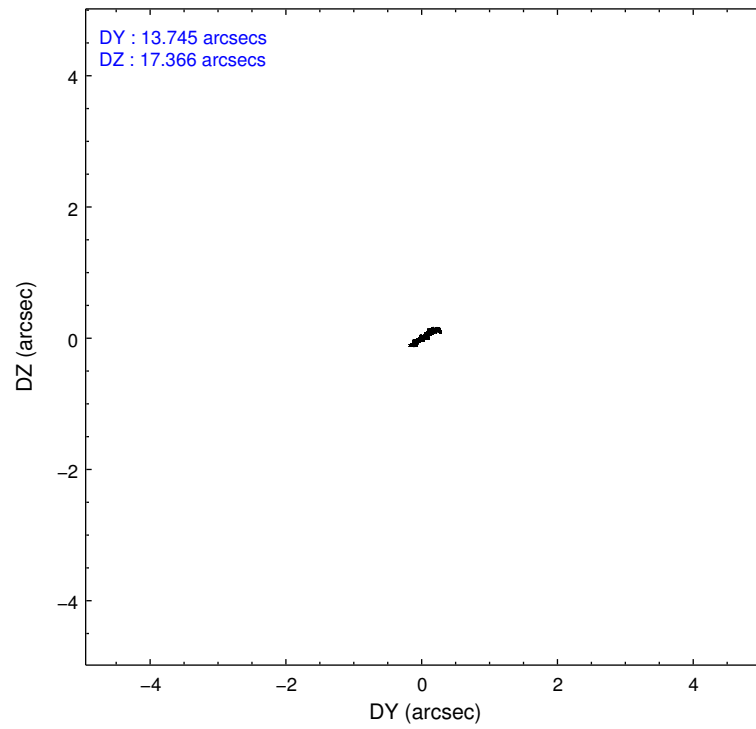
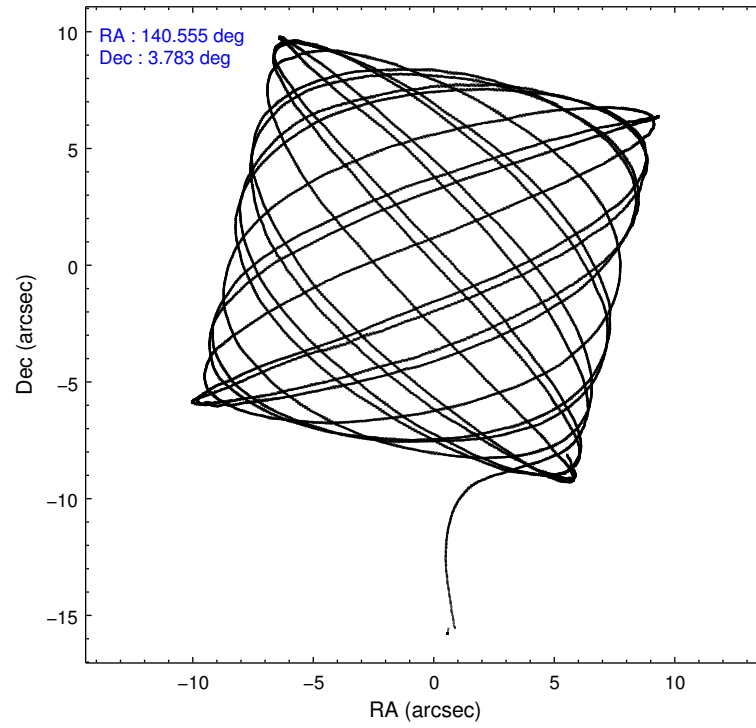
	ccd 0	ccd 1	ccd 2	ccd 3	ccd 6
grade 0 events	3226	3728	3402	4924	3246
	3%	4%	3%	5%	3%
grade 1 events	70	63	59	73	33
	0%	0%	0%	0%	0%
grade 2 events	2174	2355	2223	2159	2024
	2%	2%	2%	2%	2%
grade 3 events	1025	1079	918	994	972
	1%	1%	0%	1%	1%
grade 4 events	951	1036	909	1047	991
	1%	1%	0%	1%	1%
grade 5 events	3233	3476	2985	3697	3706
	3%	4%	3%	4%	4%
grade 6 events	1749	1978	1669	1827	1944
	2%	2%	1%	2%	2%
grade 7 events	68725	69963	79904	74868	72446
	84%	83%	86%	83%	84%

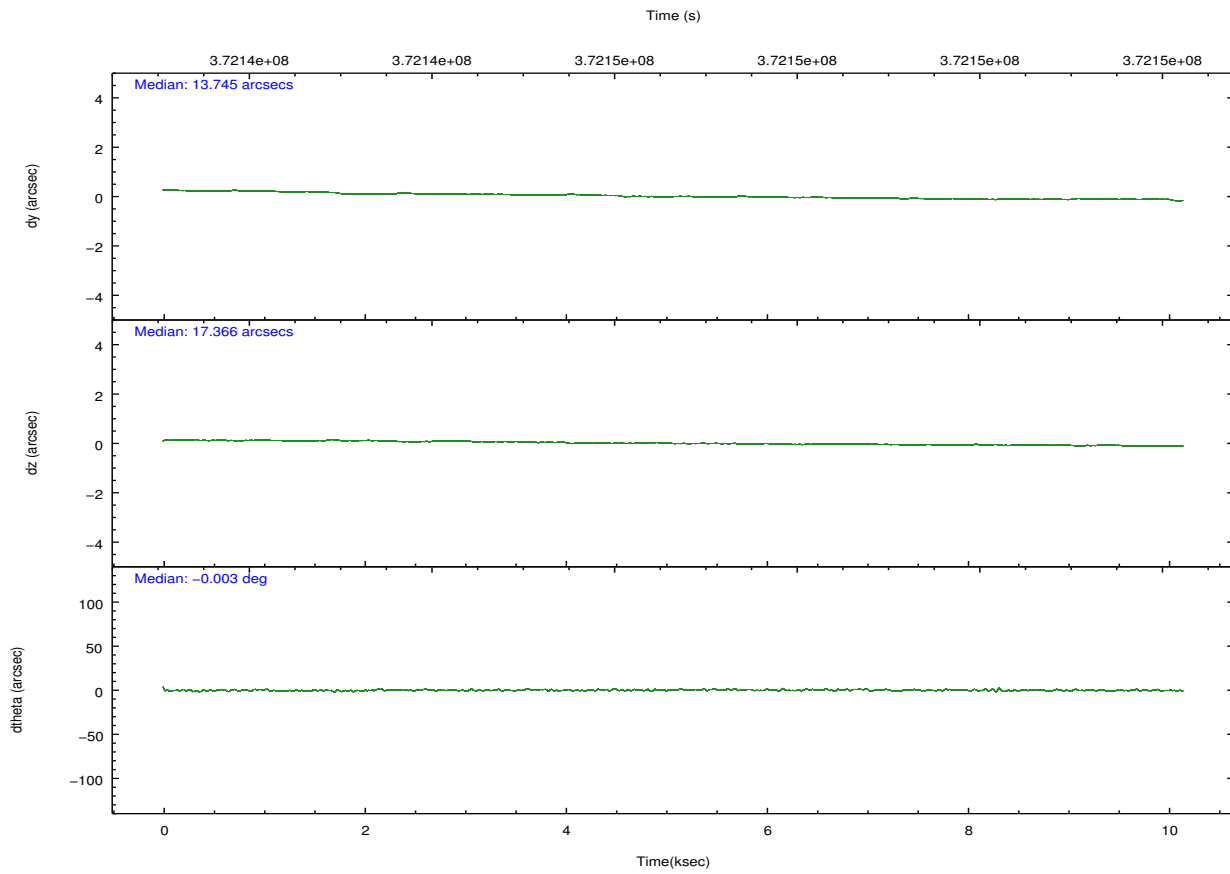
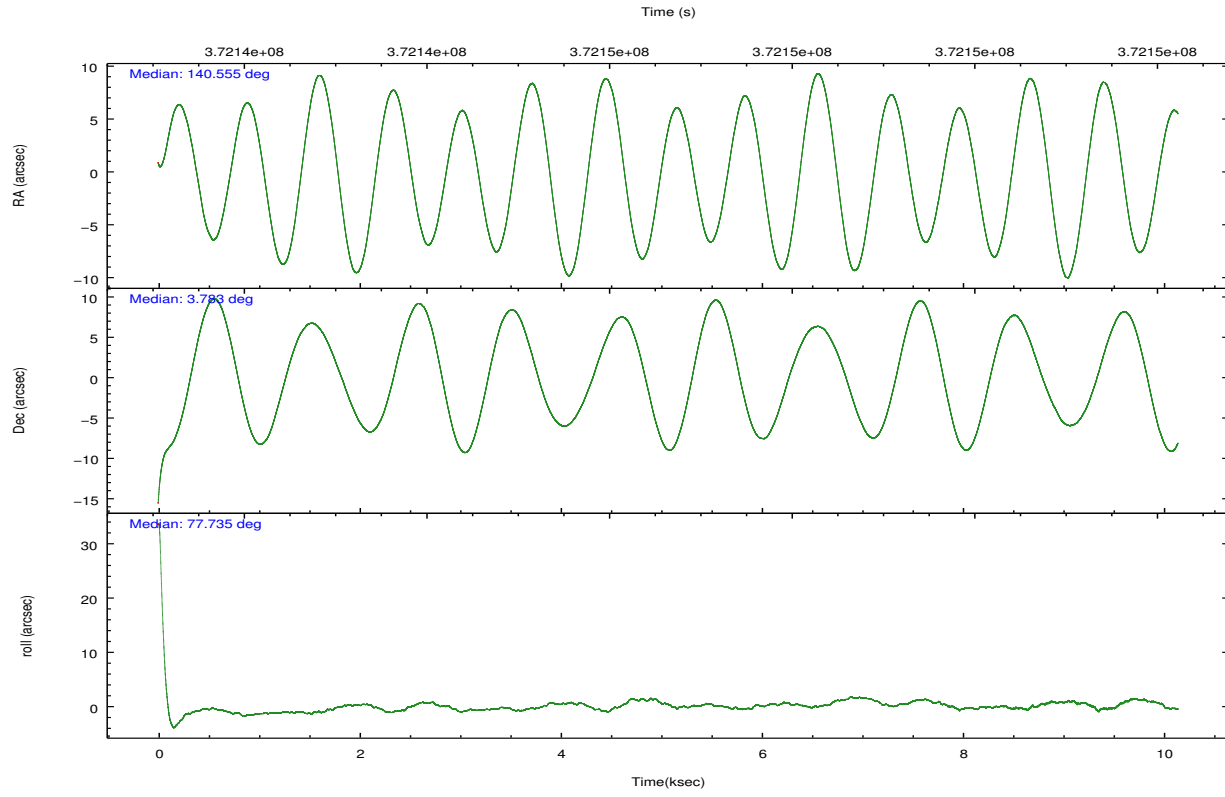
2.2 Compared Parameters

Parameter	Planned	Actual
Instrument	ACIS	ACIS
Detector	ACIS-01236	ACIS-01236
Grating	NONE	NONE
Data mode	VFAINT	VFAINT
Observation mode	POINTING	POINTING
[deg] Pointing RA	140.563142	140.5546734005219
[deg] Pointing Dec	3.756750	3.782861151542359
[deg] Pointing Roll	77.532340	77.74162913421668
[mm] SIM focus pos	-0.782348	-0.7809083437167272
[mm] SIM defocus	0	0.001439871863259334
[mm] SIM translation stage pos	-233.592463	-233.5874344608287
[mm] SIM translation stage offset	0	-0.005018542100998502
[s] Observation start time (MET)	372141701.184000	372140769.2938
Observation start date	2009-10-17T04:40:35	2009-10-17T04:26:09
[s] Observation end time (MET)	372151701.184000	372152759.2319
Observation end date	2009-10-17T07:27:15	2009-10-17T07:45:59
Read mode	TIMED	TIMED

Parameter	Planned	Actual
Obspar format version number	7	7
Obspar file type	PREDICTED	ACTUAL
Obspar update status	NONE	UPDATED
Number of optional ACIS chips dropped	0	0
On-chip summing requested	N	N
Subarray requested	NONE	NONE
Alternating exposures requested	N	N
[s] Primary exposure time	0.000000	3.1

2.3 Aspect



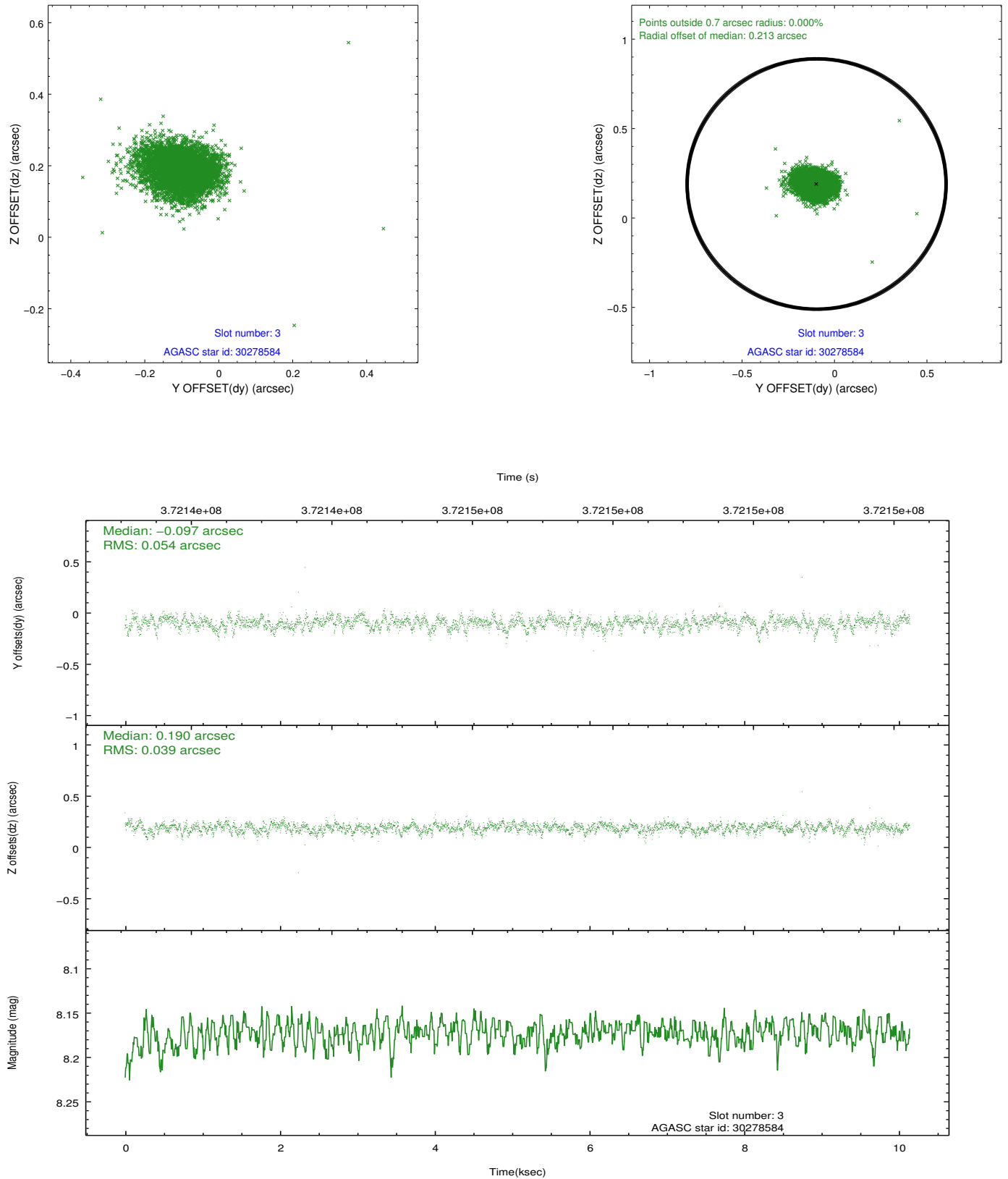


Slot Statistics

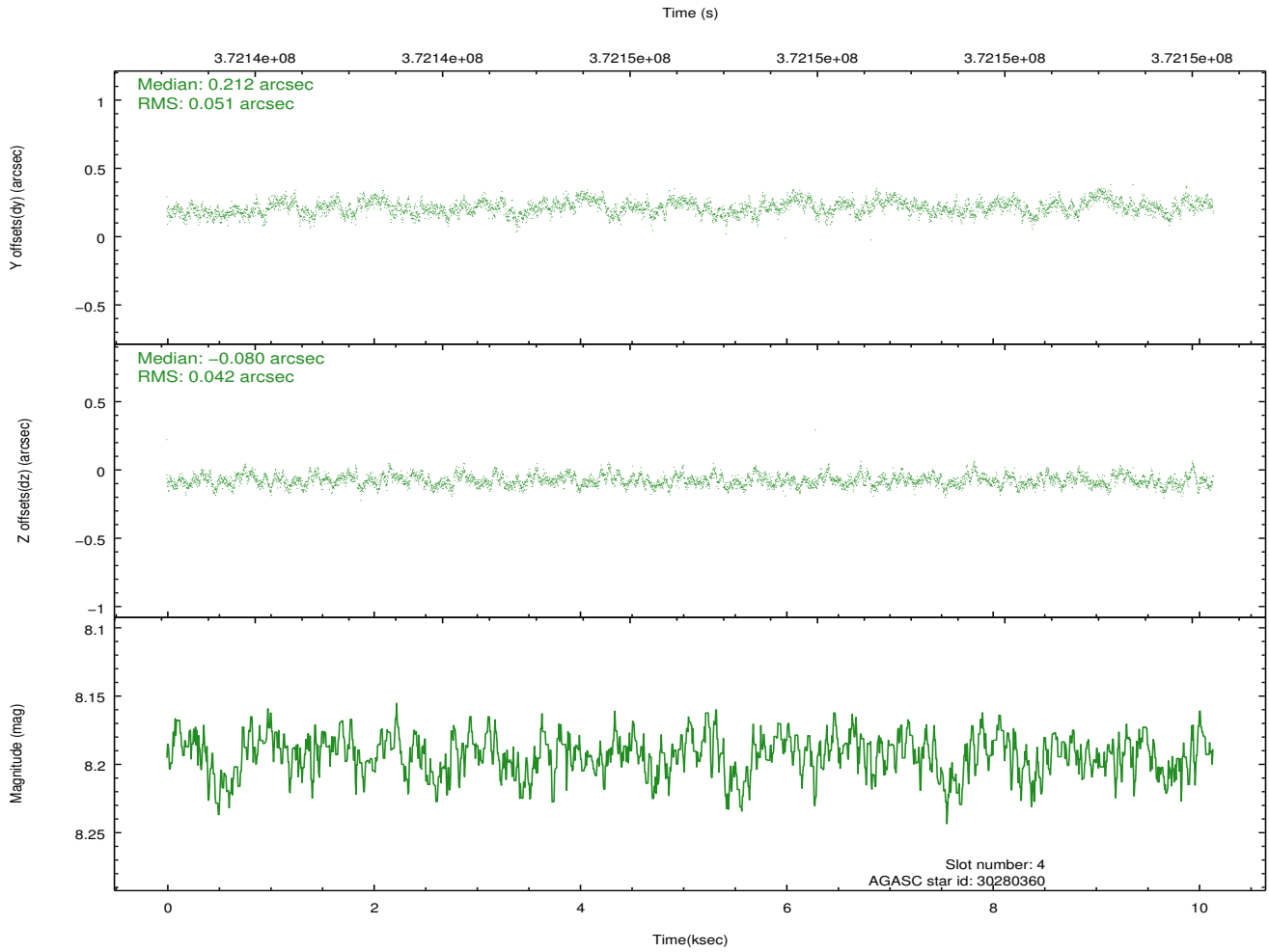
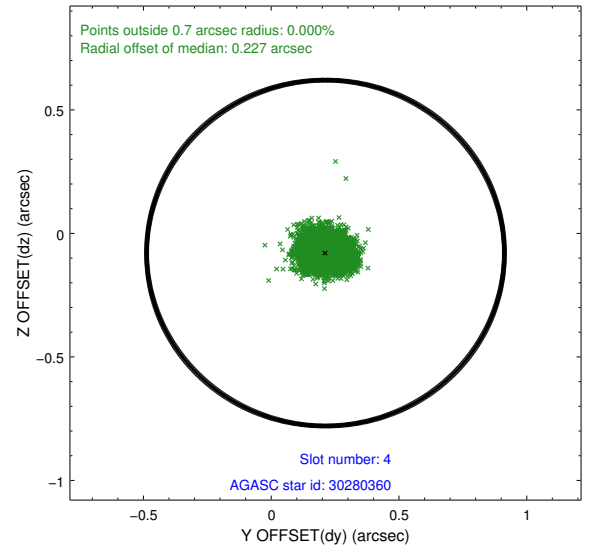
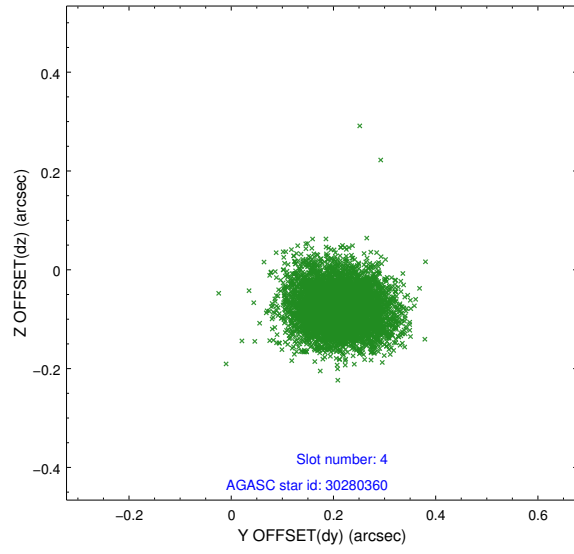
slot	status	id	mag	n_pts	med_dy	med_dz	dr1	dr2	ra	dec	mean_y	mean_z
0	FID	ACIS-I-2	6.91	2474	-0.095	-0.086	0.015	0.024	0.000000	0.000000	-768.54	-847.50
1	FID	ACIS-I-4	6.92	2475	0.186	0.079	0.009	0.017	0.000000	0.000000	2145.54	1058.60
2	FID	ACIS-I-5	6.97	2475	-0.192	0.074	0.013	0.020	0.000000	0.000000	-1821.82	1057.00
3	GUIDE	30278584	8.17	4949	-0.097	0.190	0.068	0.116	141.015091	4.289611	2223.91	-1169.25
4	GUIDE	30280360	8.19	4948	0.212	-0.080	0.071	0.113	140.303650	3.420705	-1381.19	650.26
5	GUIDE	30286944	8.23	4947	0.006	-0.208	0.062	0.099	140.371089	3.948284	524.27	822.85
6	GUIDE	30291392	8.06	4949	-0.089	0.261	0.071	0.116	141.252239	4.011353	1431.05	-2217.36
7	GUIDE	30292056	8.58	4946	-0.038	-0.166	0.072	0.118	140.593319	4.365623	2164.23	367.40

2.4 Star Slots

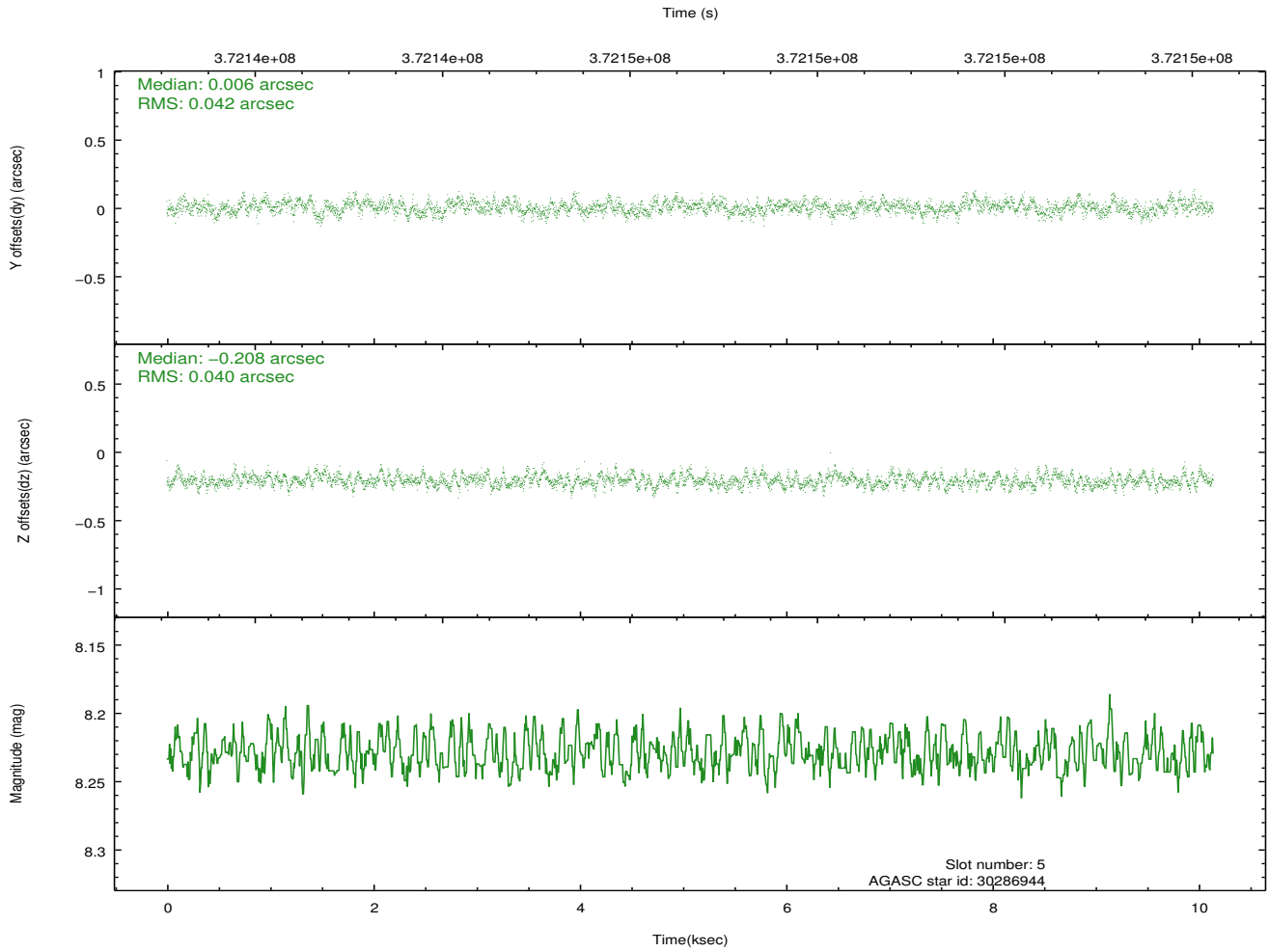
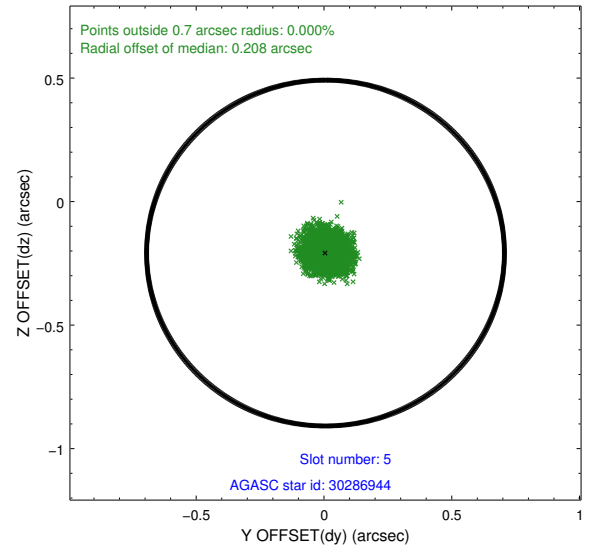
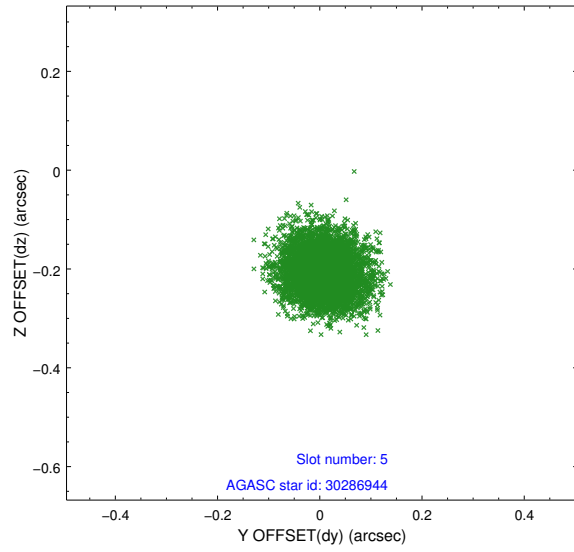
2.4.1 Slot 3



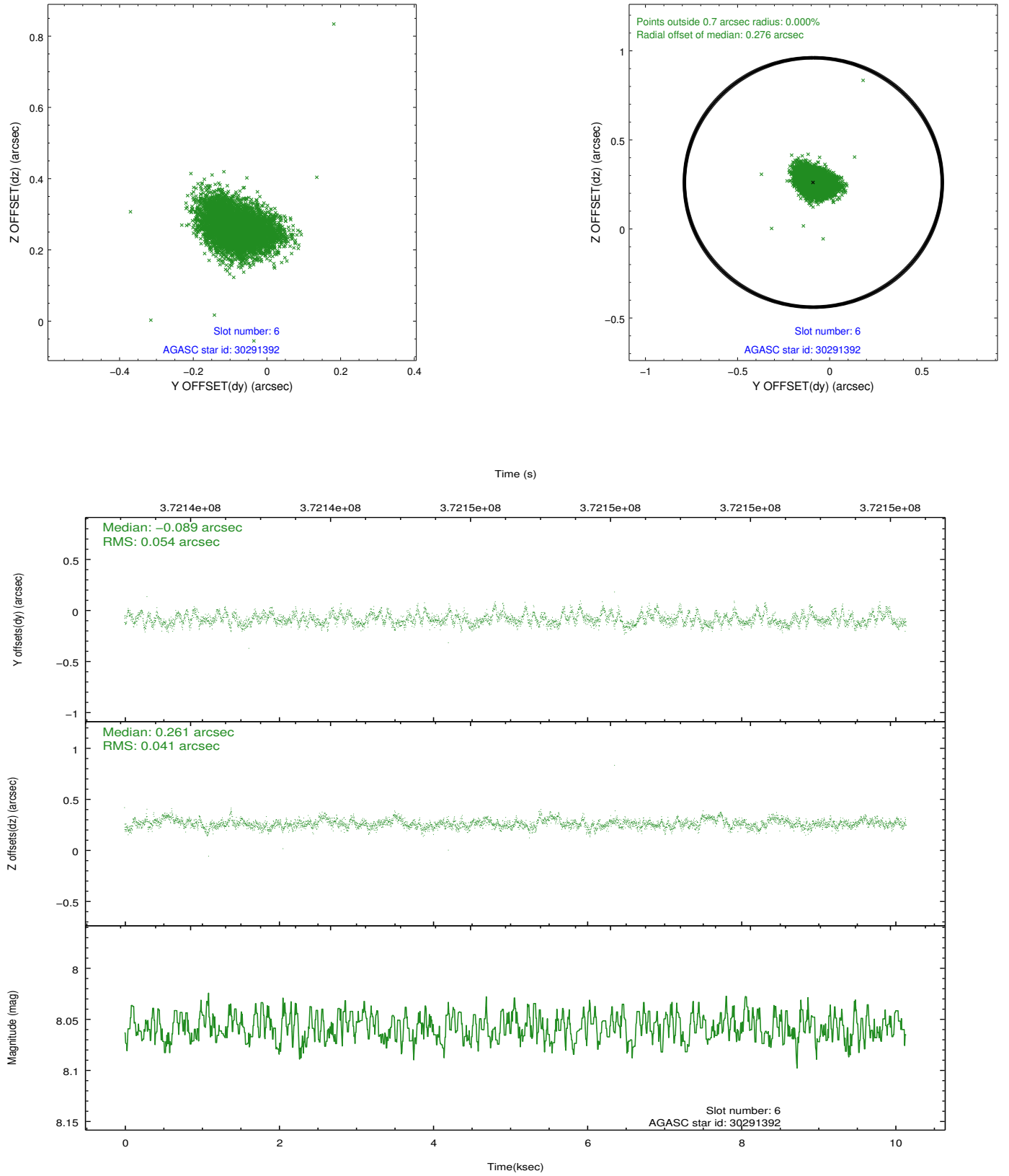
2.4.2 Slot 4



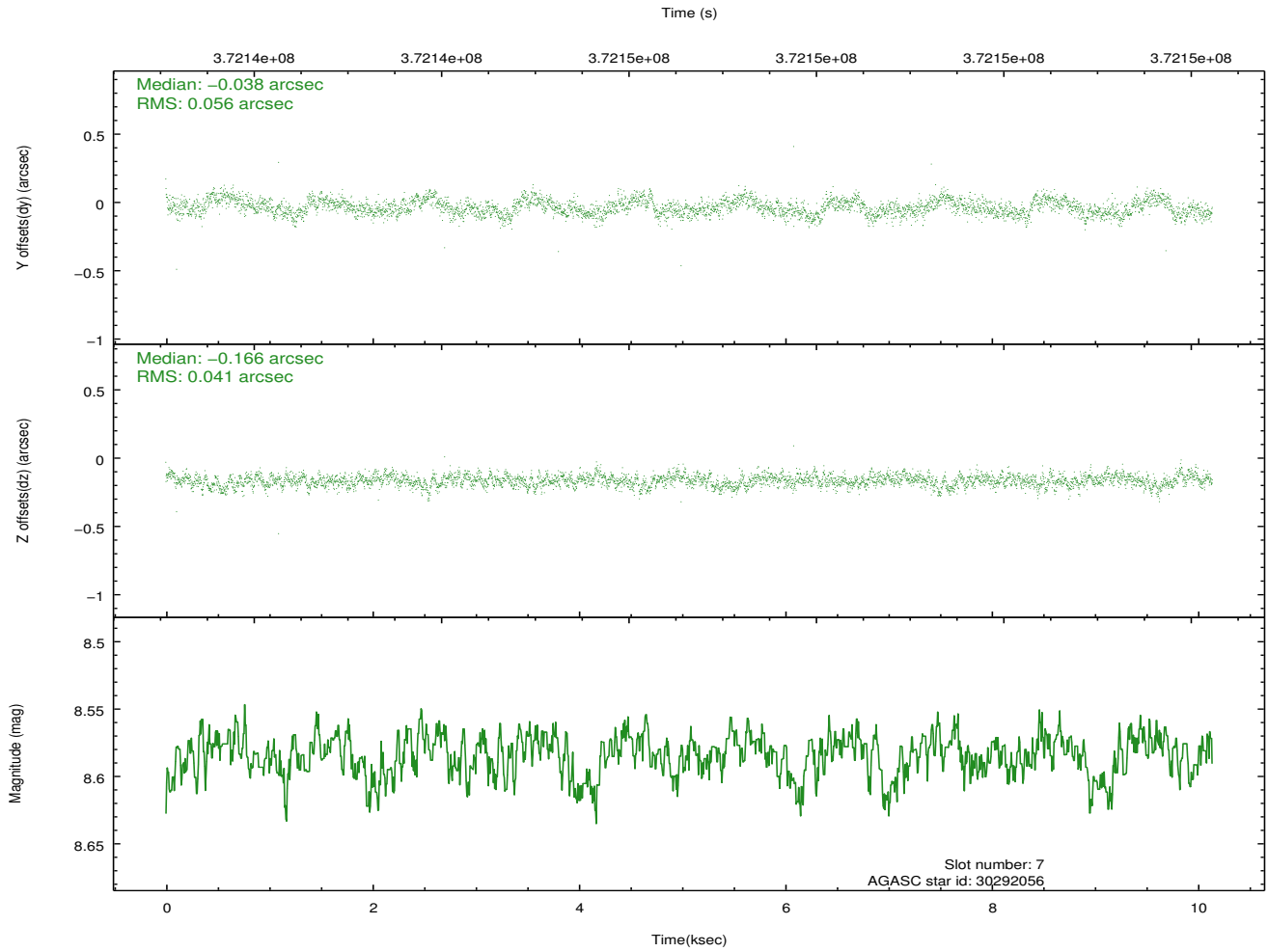
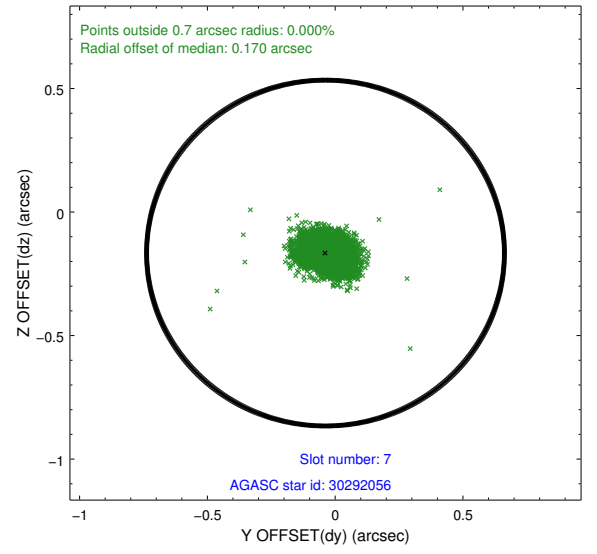
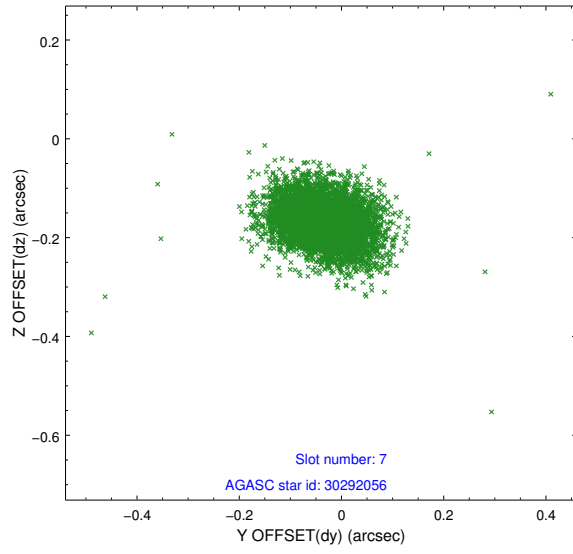
2.4.3 Slot 5



2.4.4 Slot 6

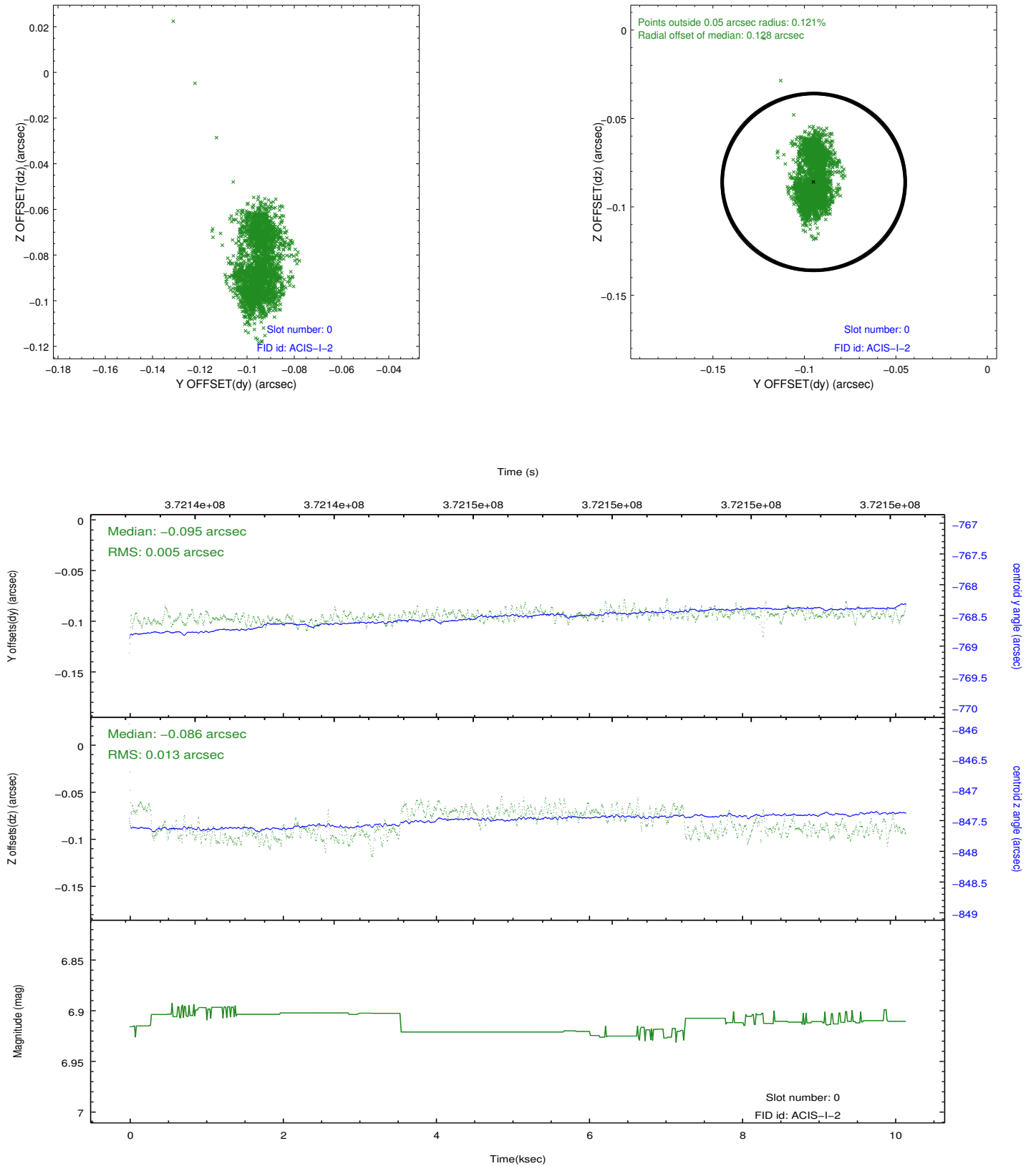


2.4.5 Slot 7

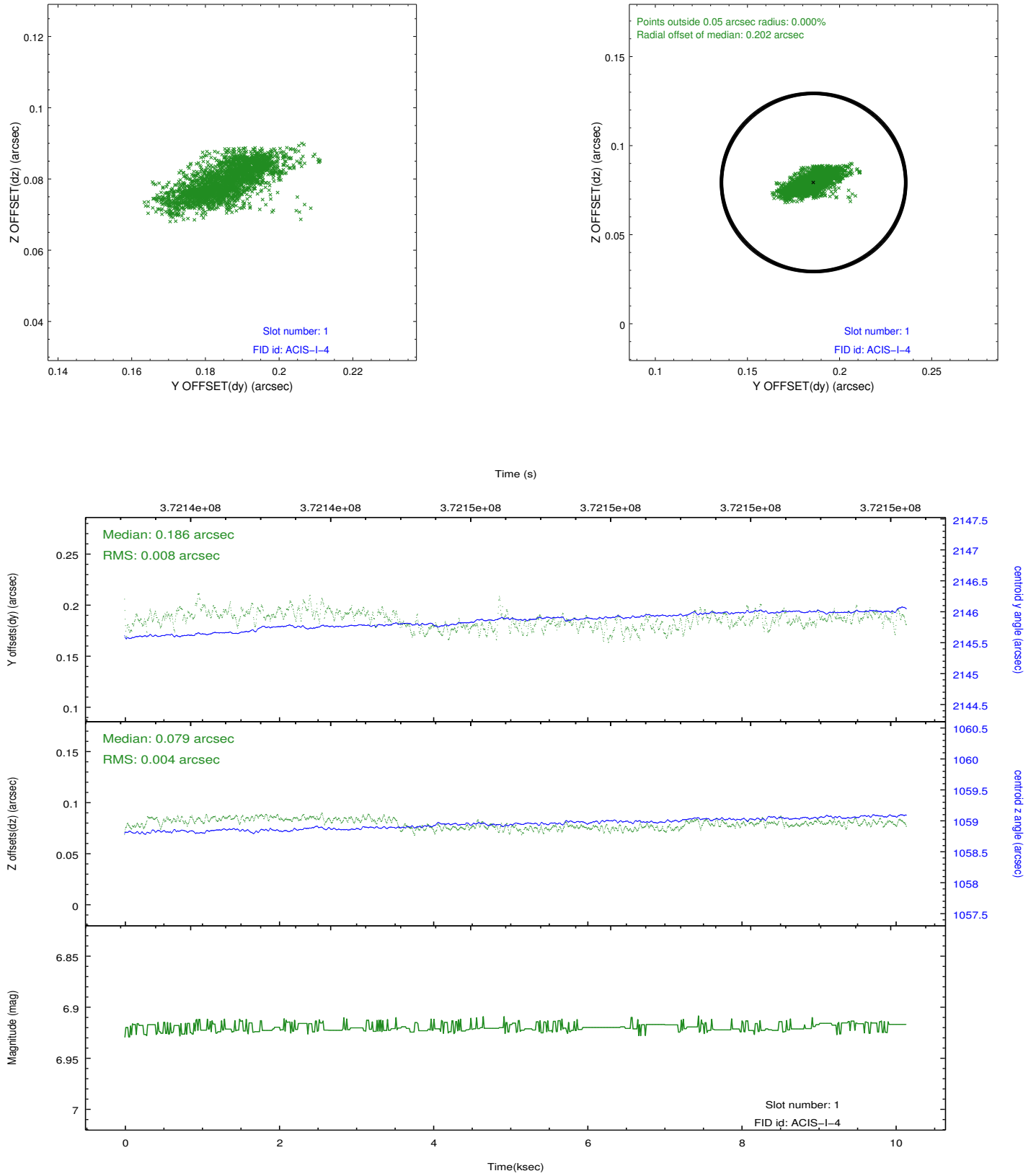


2.5 FID Slots

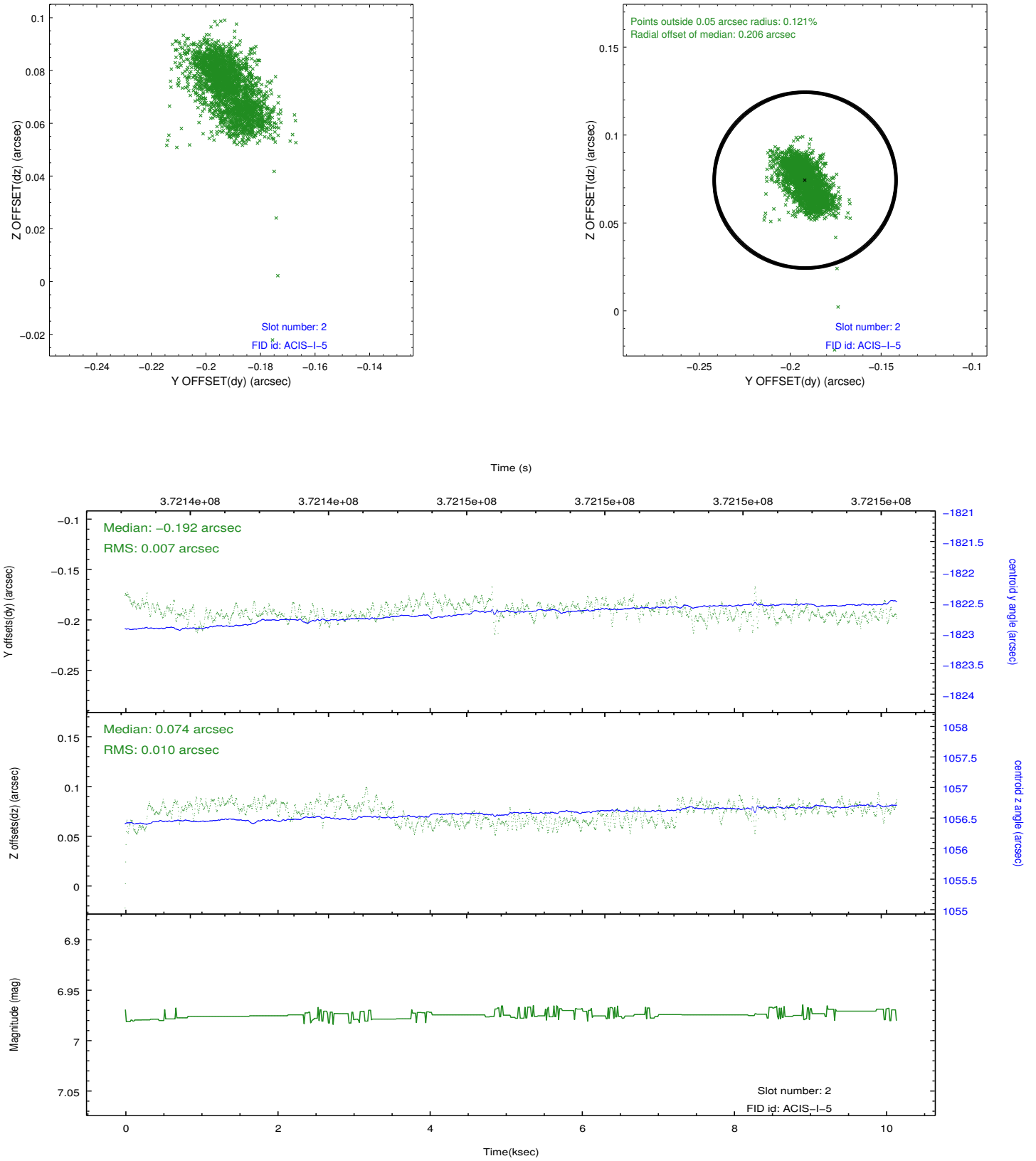
2.5.1 Slot 0



2.5.2 Slot 1



2.5.3 Slot 2



A Summary

A.1 Status

V&V Scientist	Beth Sundheim
V&V Date (YYYY-MM-DD)	2012.06.20
V&V Edition	1
V&V Disposition and Status	OK
V&V Charge Time	10.042896969616

A.2 Comments