

V&V Reference Report

L2 ASCDS Version : 8.4.5

Observation 10888 - L2 Version 2
Chandra X-Ray Center

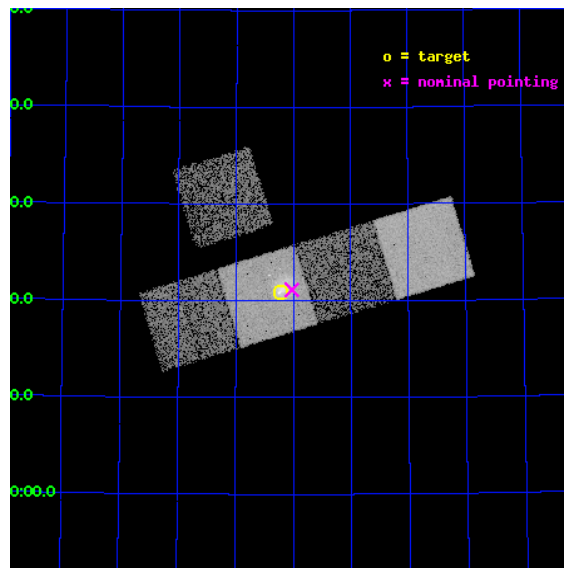
L2 Processing Date : Jun 6 2012

Contents

1	Front	2
2	OBI	3
2.1	OBI	3
2.1.1	Images	3
2.1.2	Bias	3
2.1.3	Parameters	4
2.1.4	Events	4
2.2	Compared Parameters	5
2.3	Aspect	6
2.4	Star Slots	9
2.4.1	Slot 3	9
2.4.2	Slot 4	10
2.4.3	Slot 5	11
2.4.4	Slot 6	12
2.4.5	Slot 7	13
2.5	FID Slots	14
2.5.1	Slot 0	14
2.5.2	Slot 1	15
2.5.3	Slot 2	16
A	Summary	17
A.1	Status	17
A.2	Comments	17

1 Front

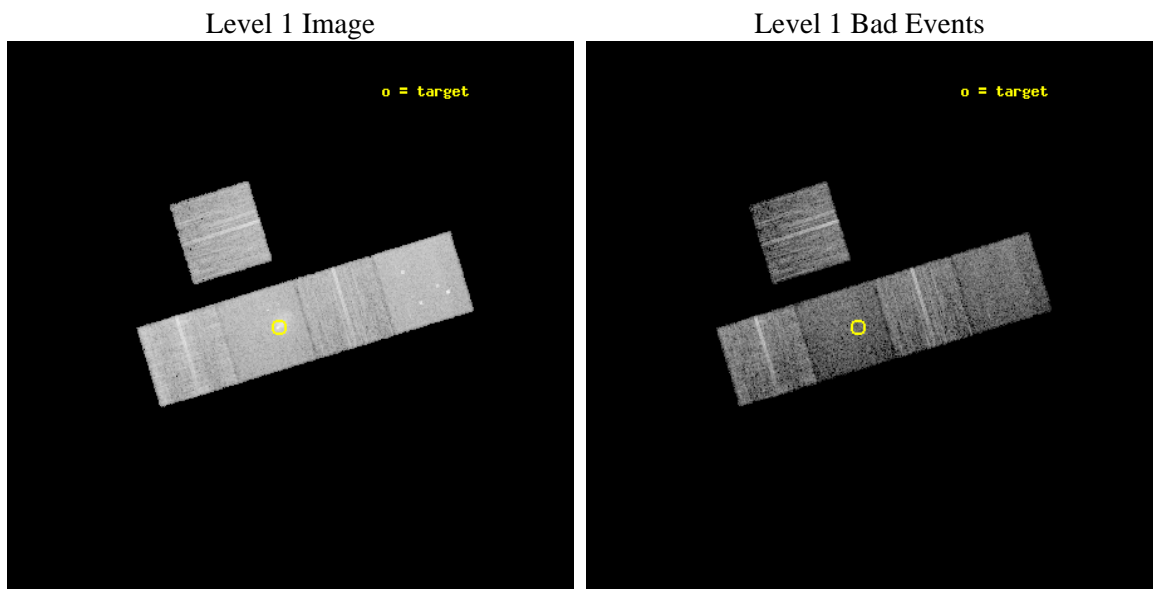
seq_num	800825	Sequence number
obs_id	10888	Observation id
title	Does AGN heating quench star formation in Brightest Cluster Galaxies?	Proposal title
observer	Dr Helen Russell	Principal investigator
object	Abell 2146	Source name
dtcycle	0	
cycle	P	events from which exps? Prim/Second/Both
ra_targ	239.0575	Observer's specified target RA [deg]
dec_targ	66.348611	Observer's specified target Dec [deg]
ra_nom	239.00625214707	Nominal RA [deg]
dec_nom	66.35228884968	Nominal Dec [deg]
roll_nom	163.00359452496	Nominal Roll [deg]
revision	2	Processing version of data
ontime	6531.7000502348	Sum of GTIs [s]
livetime	6446.3585805109	Livetime [s]
ontime3	6531.6588760018	Sum of GTIs [s]
ontime5	6531.7000502348	Sum of GTIs [s]
ontime6	6528.5589156151	Sum of GTIs [s]
ontime7	6531.7000502348	Sum of GTIs [s]
ontime8	6531.6178359985	Sum of GTIs [s]
l2events	89915	Number of level 2 events



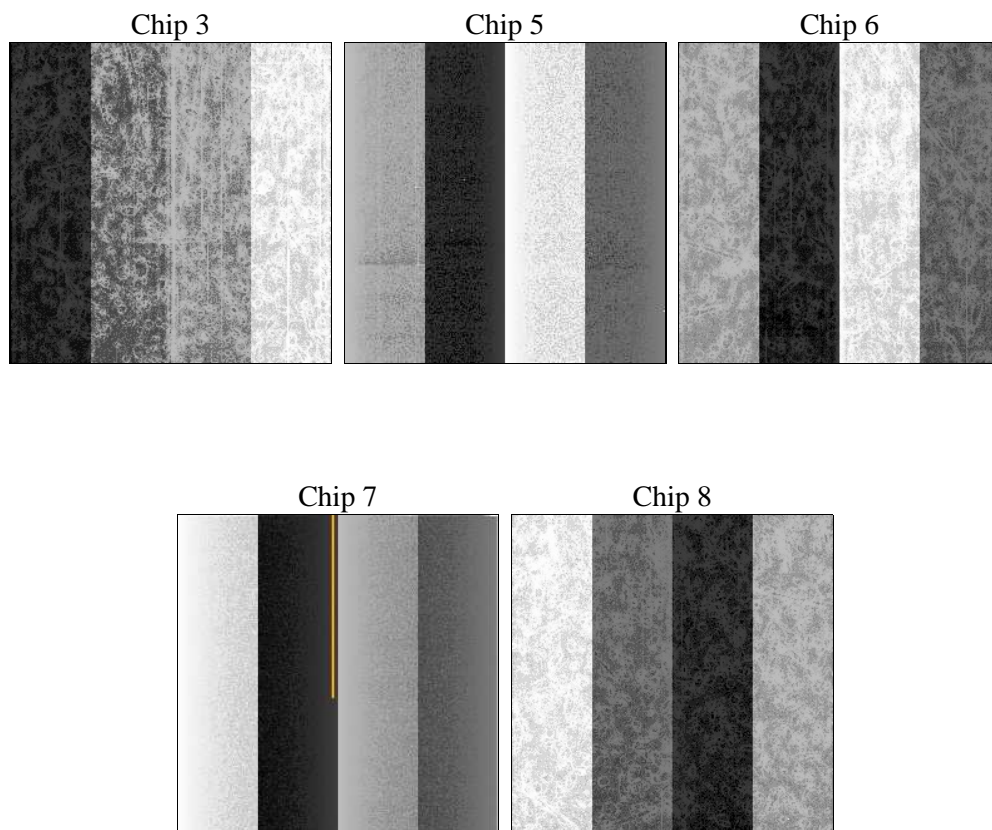
2 OBI

2.1 OBI

2.1.1 Images



2.1.2 Bias



2.1.3 Parameters

obi_num	0	Obi number	sched_exp_time	6500.000000	[s] Scheduled observation exposure time
ascdsver	8.4.5	Processing system revision	ontime	6531.7000502348	Sum of GTIs [s]
caldsver	4.4.10	 	ontime3	6531.6588760018	Sum of GTIs [s]
date	2012-06-06T03:34:12	Date and time of file creation	ontime5	6531.7000502348	Sum of GTIs [s]
revision	2	Processing version of data	ontime6	6528.5589156151	Sum of GTIs [s]
			ontime7	6531.7000502348	Sum of GTIs [s]
			ontime8	6531.6178359985	Sum of GTIs [s]
			l1events	345658	Number of level 1 events

2.1.4 Events

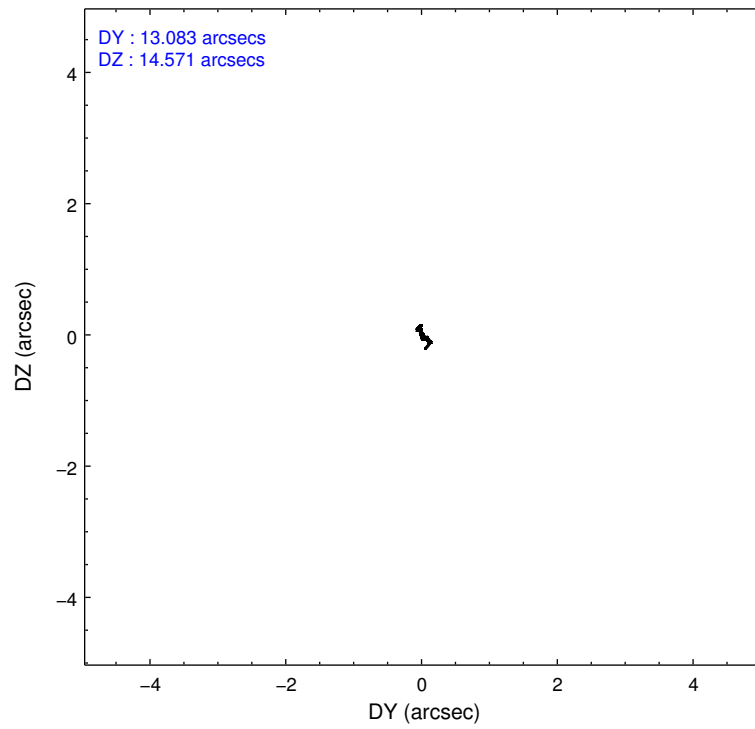
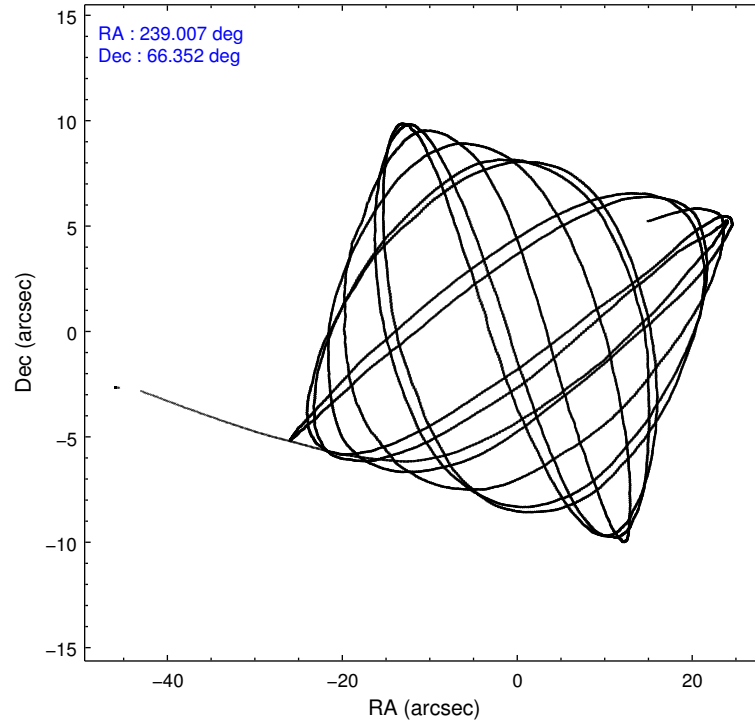
	ccd 3	ccd 5	ccd 6	ccd 7	ccd 8
level 1 events	56684	80970	59776	72653	75575
rejected events	51343	40556	53662	35991	56645
rejected %	90%	50%	89%	49%	74%

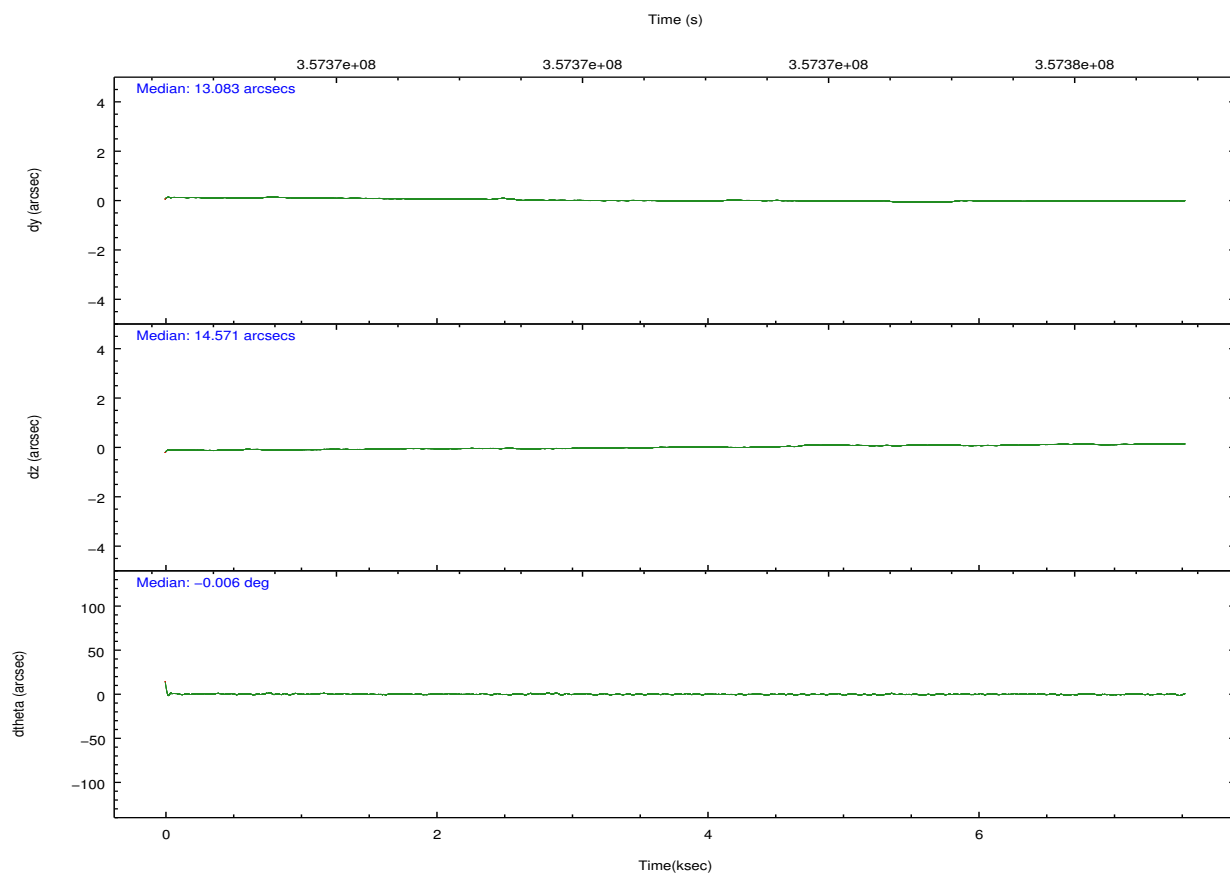
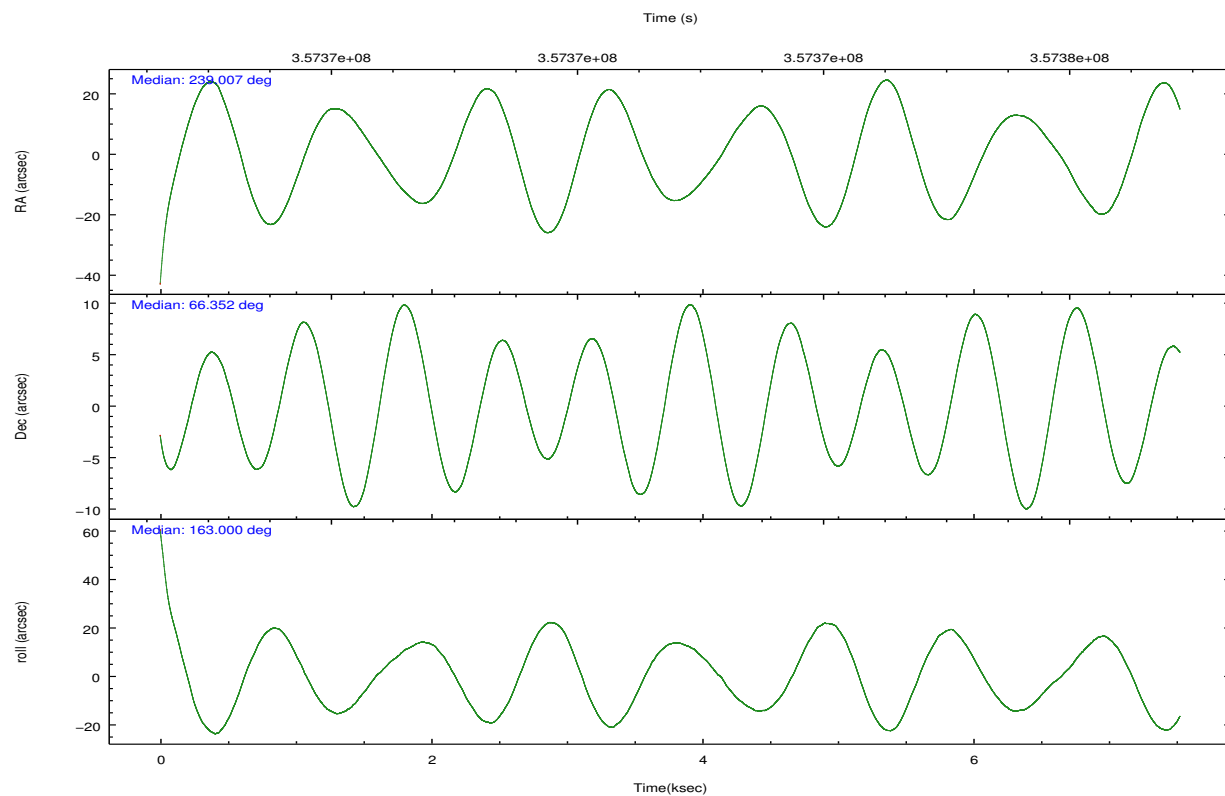
	ccd 3	ccd 5	ccd 6	ccd 7	ccd 8
grade 0 events	1851	4114	2092	4909	5608
	3%	5%	3%	6%	7%
grade 1 events	33	206	22	81	54
	0%	0%	0%	0%	0%
grade 2 events	1164	12140	1302	7957	4261
	2%	14%	2%	10%	5%
grade 3 events	617	1629	685	3526	2059
	1%	2%	1%	4%	2%
grade 4 events	598	1533	693	3523	1950
	1%	1%	1%	4%	2%
grade 5 events	2302	6477	2302	6833	3414
	4%	7%	3%	9%	4%
grade 6 events	1114	21037	1350	16766	5058
	1%	25%	2%	23%	6%
grade 7 events	49005	33834	51330	29058	53171
	86%	41%	85%	39%	70%

2.2 Compared Parameters

Parameter	Planned	Actual	Parameter	Planned	Actual
Instrument	ACIS	ACIS	Obspar format version number	7	7
Detector	ACIS-35678	ACIS-35678	Obspar file type	PREDICTED	ACTUAL
Grating	NONE	NONE	Obspar update status	NONE	UPDATED
Data mode	VFAINT	VFAINT	CCD I0 on	N	N
Observation mode	POINTING	POINTING	CCD I1 on	N	N
[deg] Pointing RA	239.072344	239.0062521470738	CCD I2 on	N	N
[deg] Pointing Dec	66.358818	66.35228884968048	CCD I3 on	O2	Y
[deg] Pointing Roll	162.786401	163.0035945249602	CCD S0 on	N	N
[mm] SIM focus pos	-0.684267	-0.6828225247311905	CCD S1 on	Y	Y
[mm] SIM defocus	0	0.001444936568705701	CCD S2 on	Y	Y
[mm] SIM translation stage pos	-190.132523	-190.1400660498719	CCD S3 on	Y	Y
[mm] SIM translation stage offset	0	0.00754346686406393	CCD S4 on	O1	Y
[s] Observation start time (MET)	357370011.184000	357368184.62961	CCD S5 on	N	N
Observation start date	2009-04-29T05:25:45	2009-04-29T04:56:24	Number of optional ACIS chips dropped	0	0
[s] Observation end time (MET)	357376511.184000	357377056.00505	On-chip summing requested	N	N
Observation end date	2009-04-29T07:14:05	2009-04-29T07:24:16	Subarray requested	NONE	NONE
Read mode	TIMED	TIMED	Alternating exposures requested	N	N
			[s] Primary exposure time	0.000000	3.1

2.3 Aspect



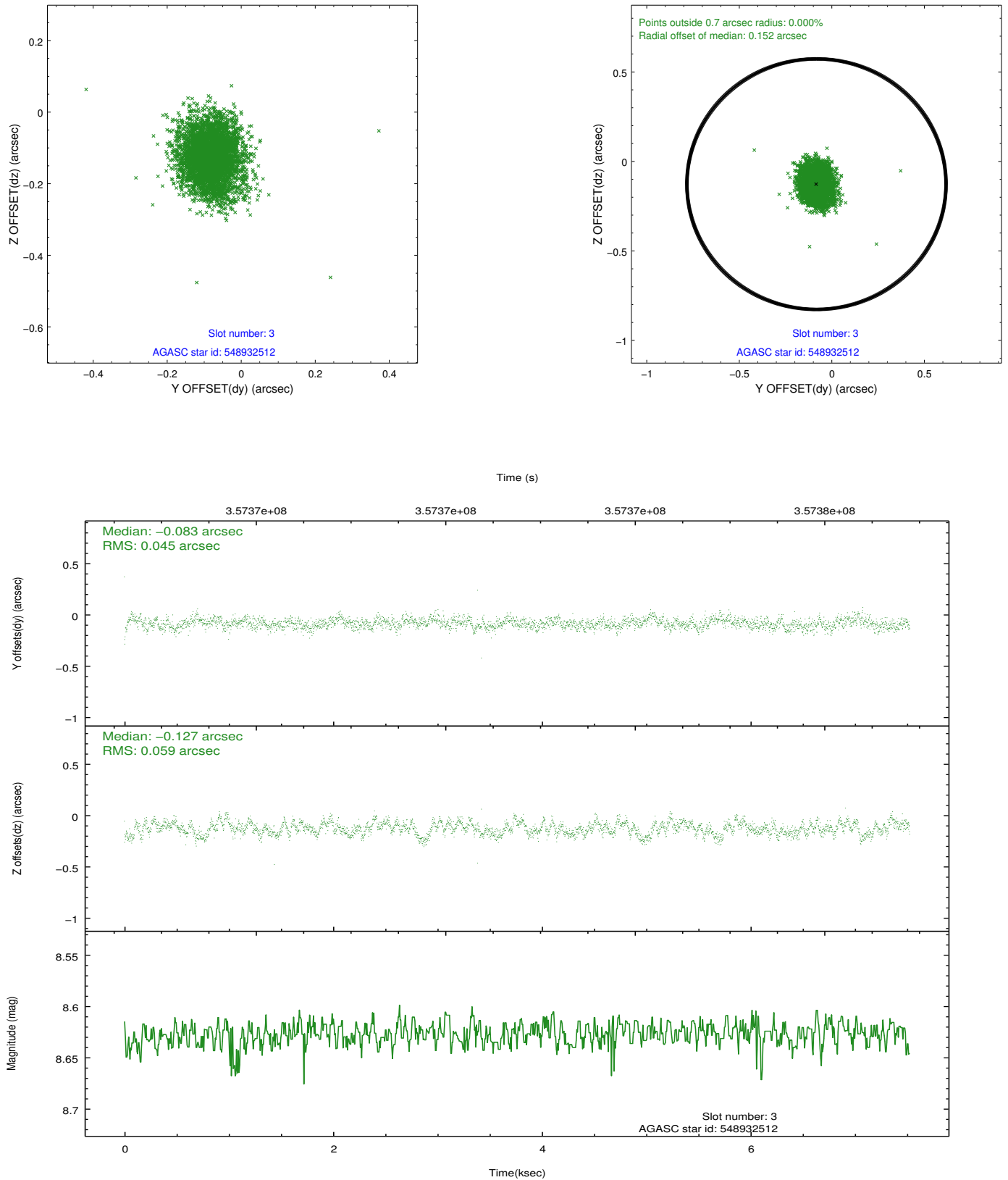


Slot Statistics

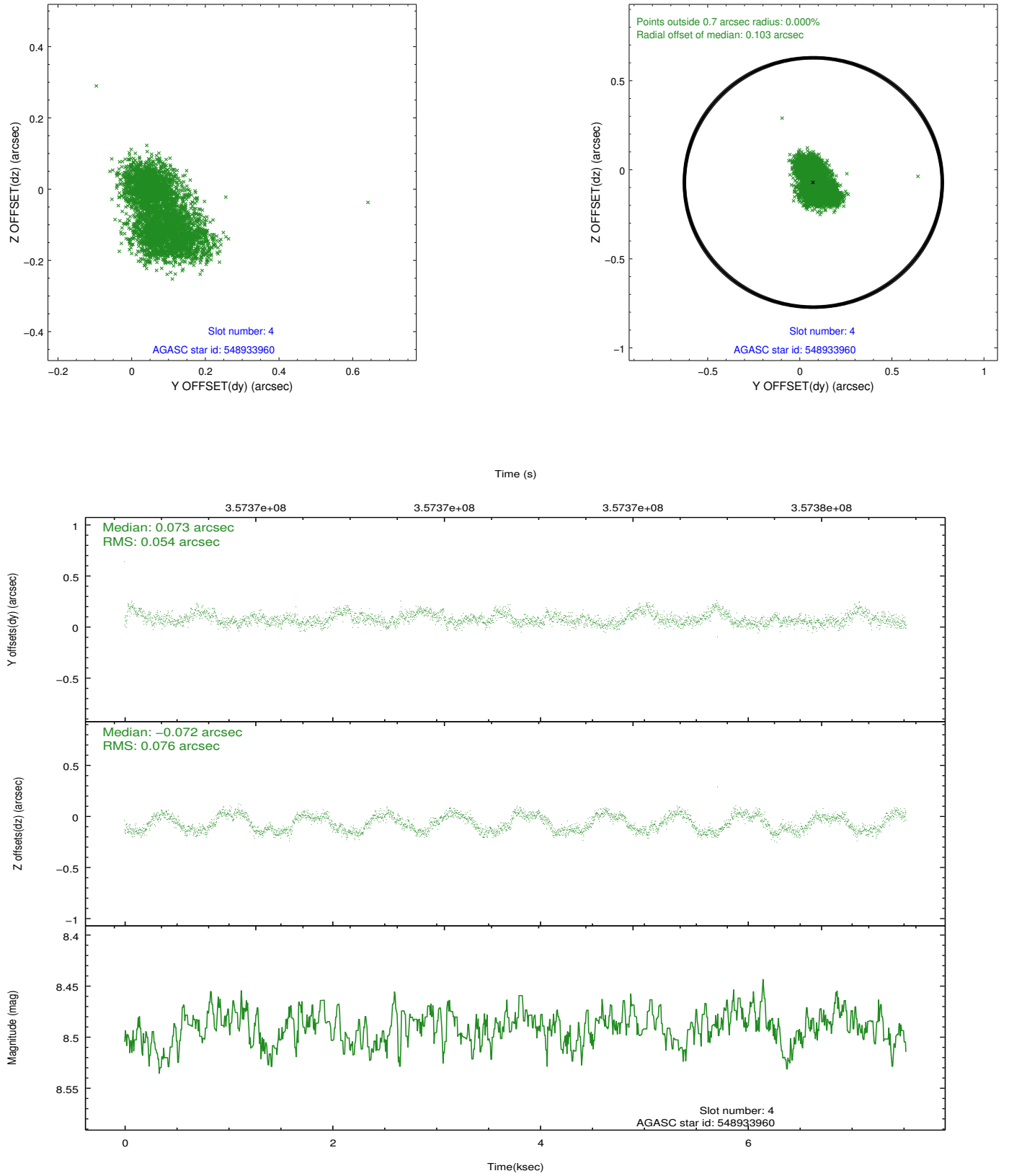
slot	status	id	mag	n_pts	med_dy	med_dz	dr1	dr2	ra	dec	mean_y	mean_z
0	FID	ACIS-S-1	6.98	1836	0.073	-0.041	0.007	0.011	0.000000	0.000000	930.12	-1731.60
1	FID	ACIS-S-5	7.01	1836	-0.145	0.045	0.007	0.012	0.000000	0.000000	-1818.71	165.21
2	FID	ACIS-S-6	7.11	1836	0.050	0.007	0.007	0.011	0.000000	0.000000	394.79	810.03
3	GUIDE	548932512	8.63	3670	-0.083	-0.127	0.078	0.126	239.727627	66.054972	-1236.29	756.50
4	GUIDE	548933960	8.49	3671	0.073	-0.072	0.102	0.149	237.671184	66.428675	2007.93	336.14
5	GUIDE	548937184	9.86	3662	0.012	0.056	0.201	0.331	238.771821	66.565432	632.62	-583.77
6	GUIDE	548939872	10.30	3667	-0.055	0.028	0.227	0.347	238.964867	66.978384	805.50	-2085.78
7	GUIDE	549849072	9.23	3663	0.068	0.085	0.121	0.193	240.420863	66.802816	-1346.32	-2112.72

2.4 Star Slots

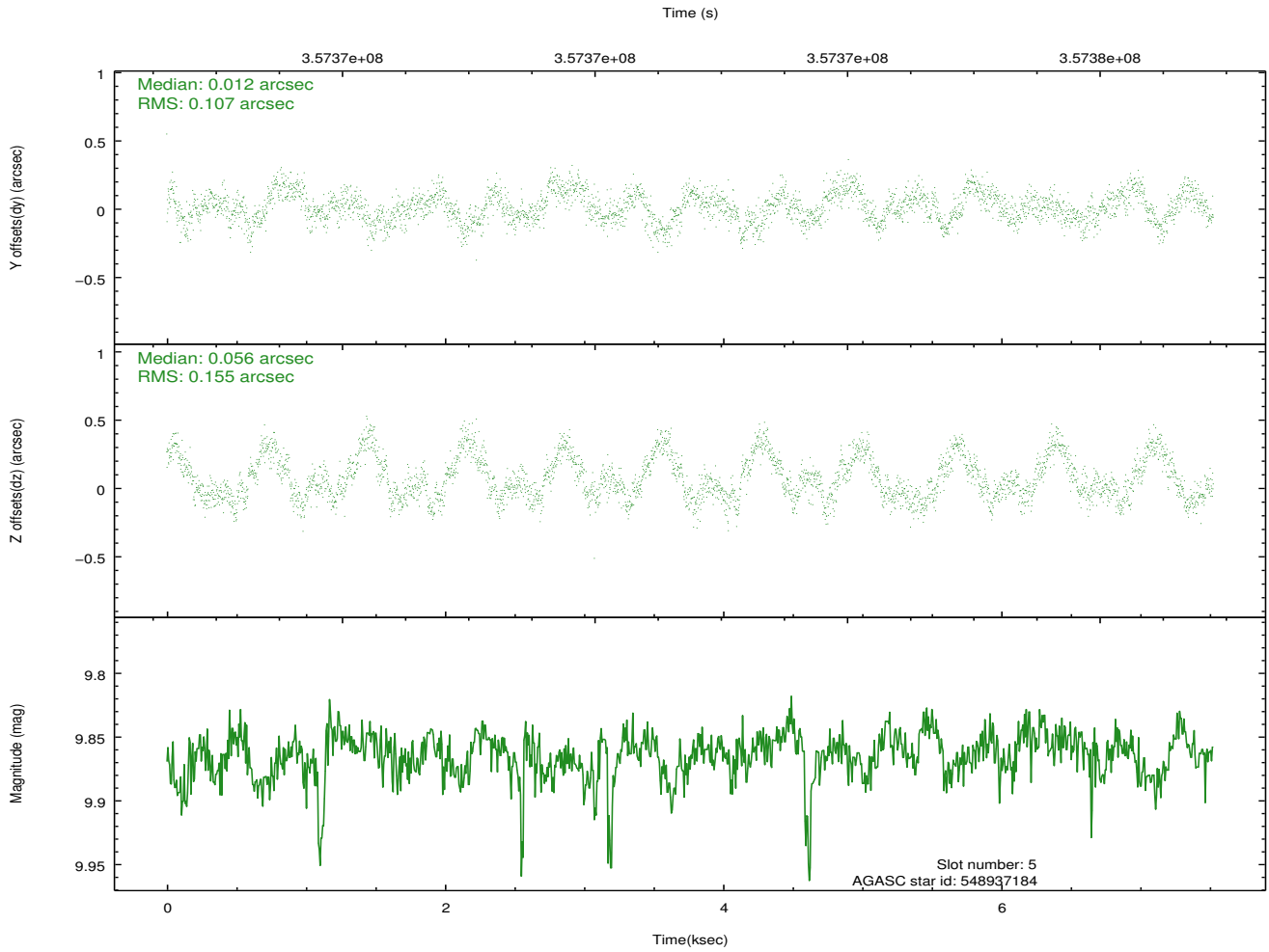
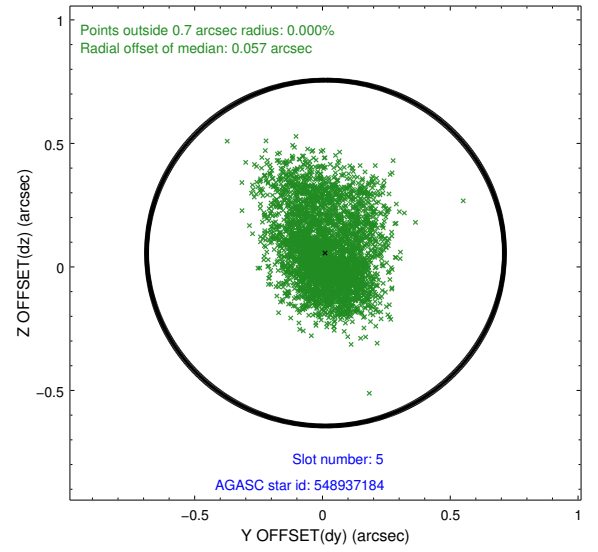
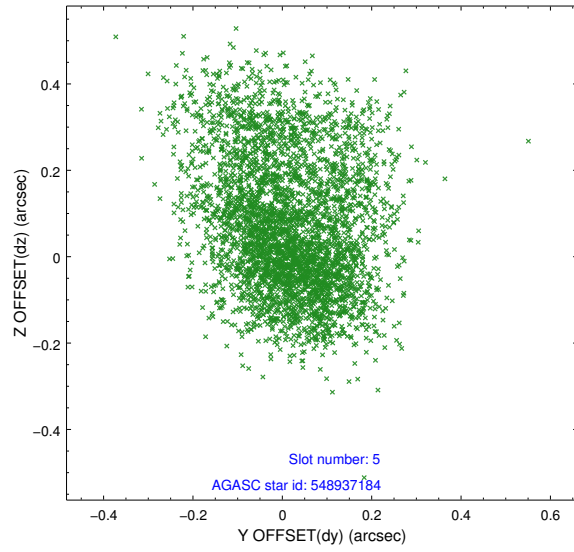
2.4.1 Slot 3



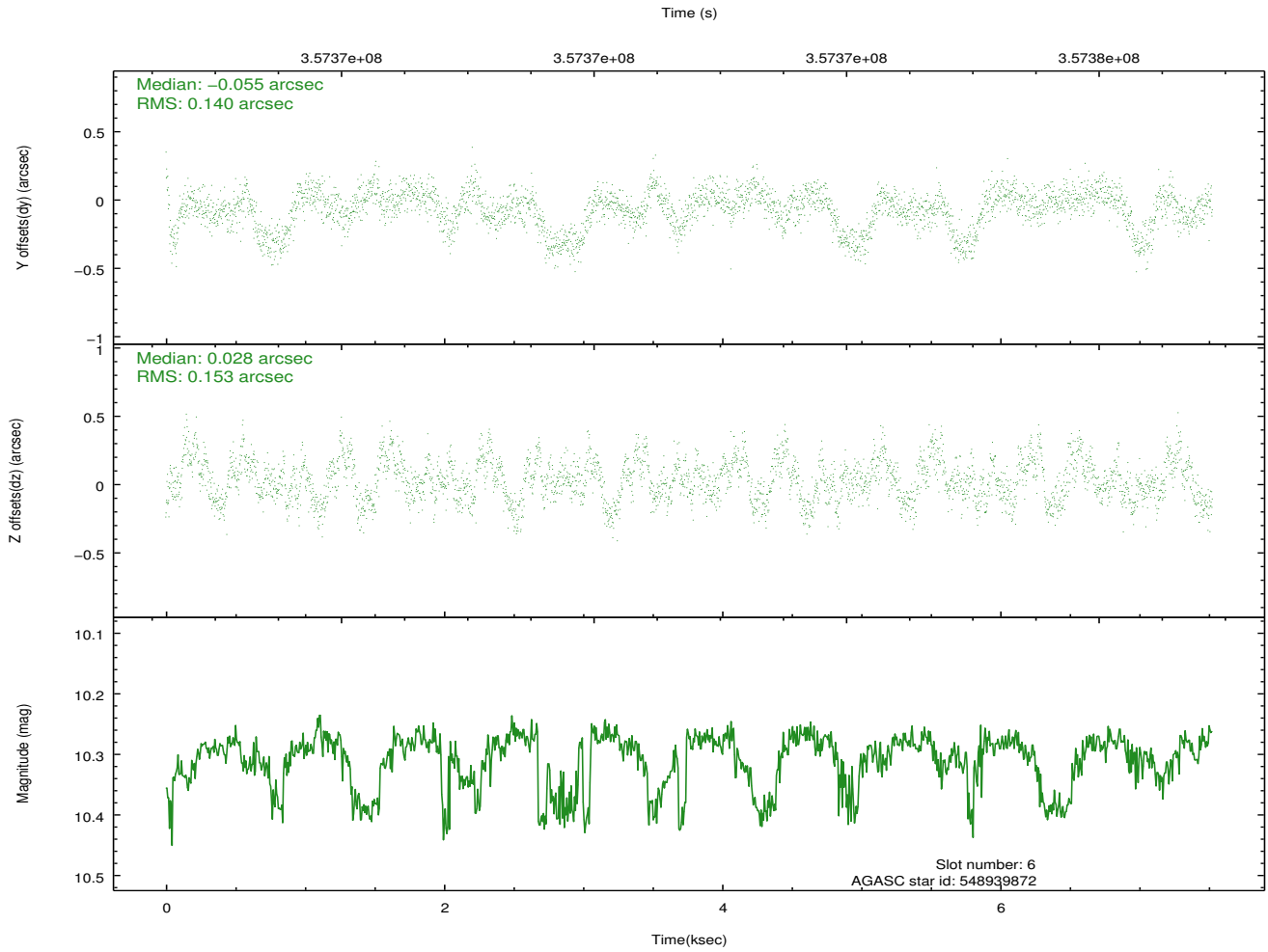
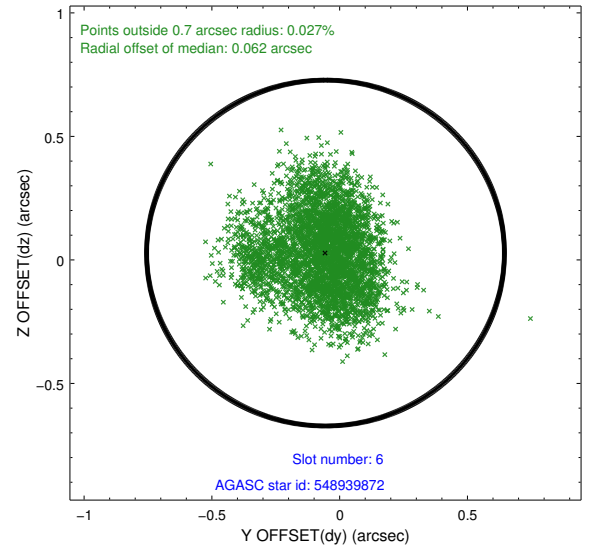
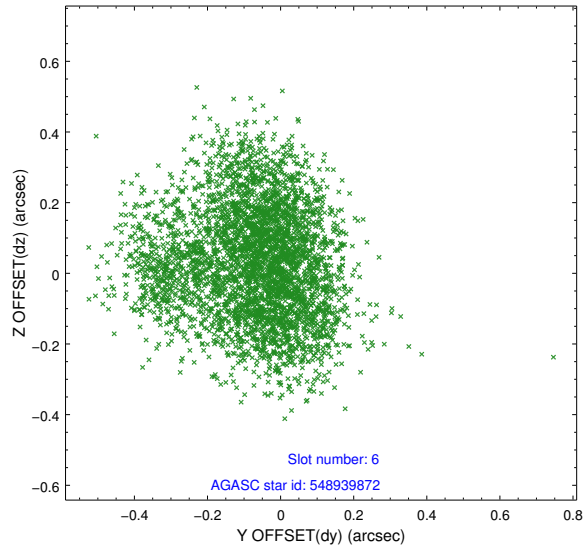
2.4.2 Slot 4



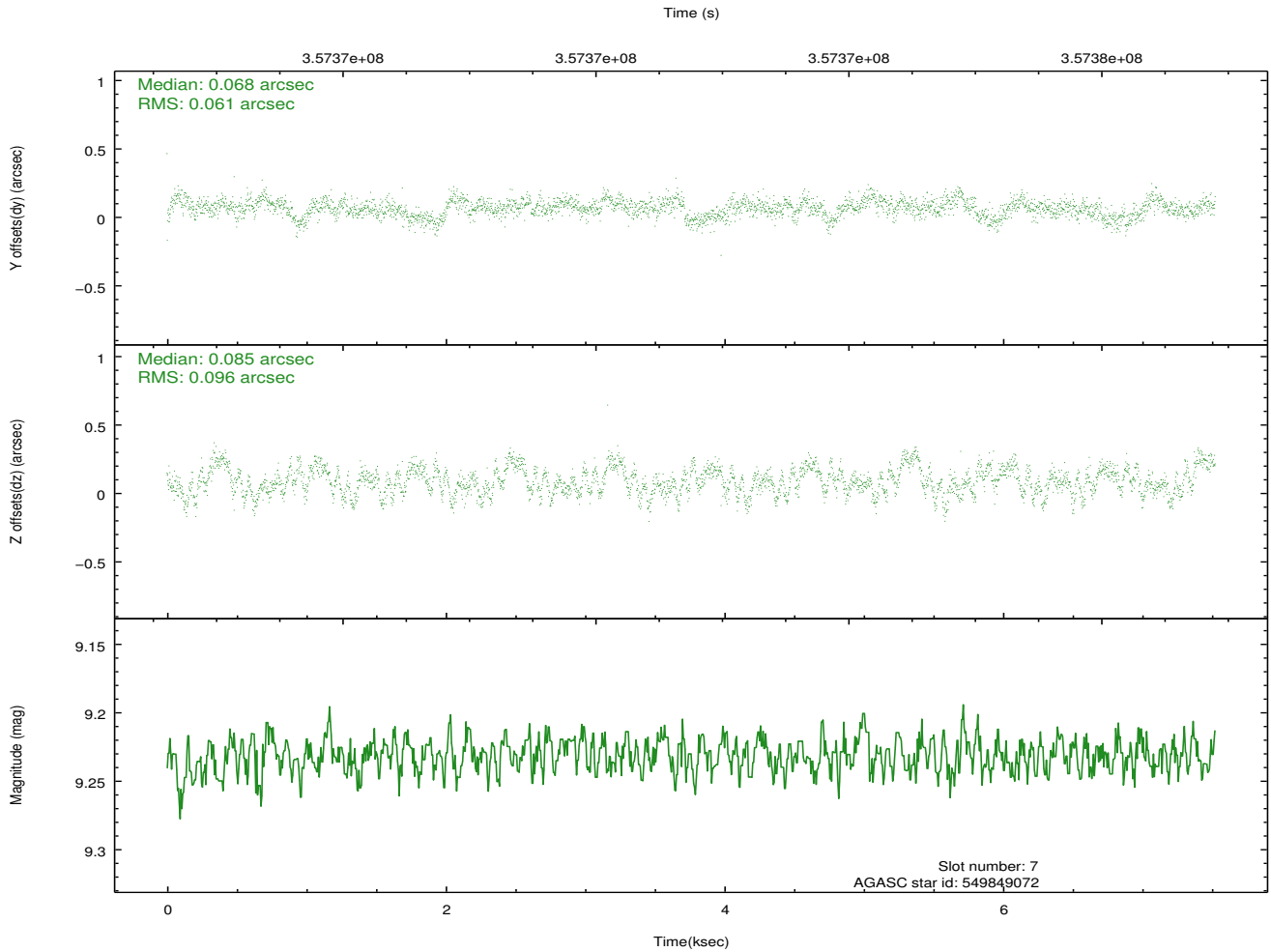
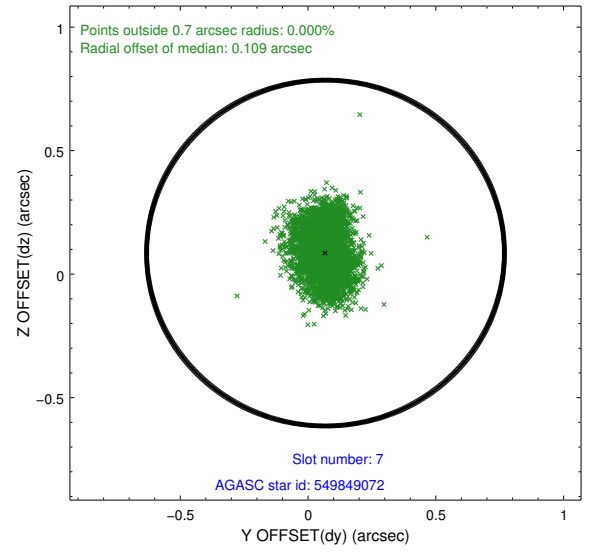
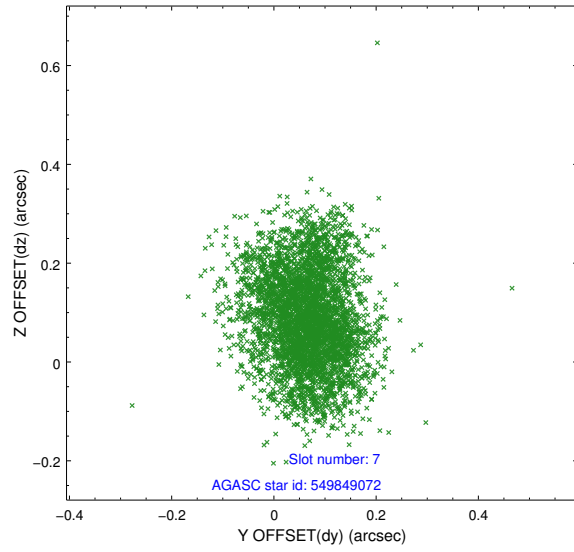
2.4.3 Slot 5



2.4.4 Slot 6

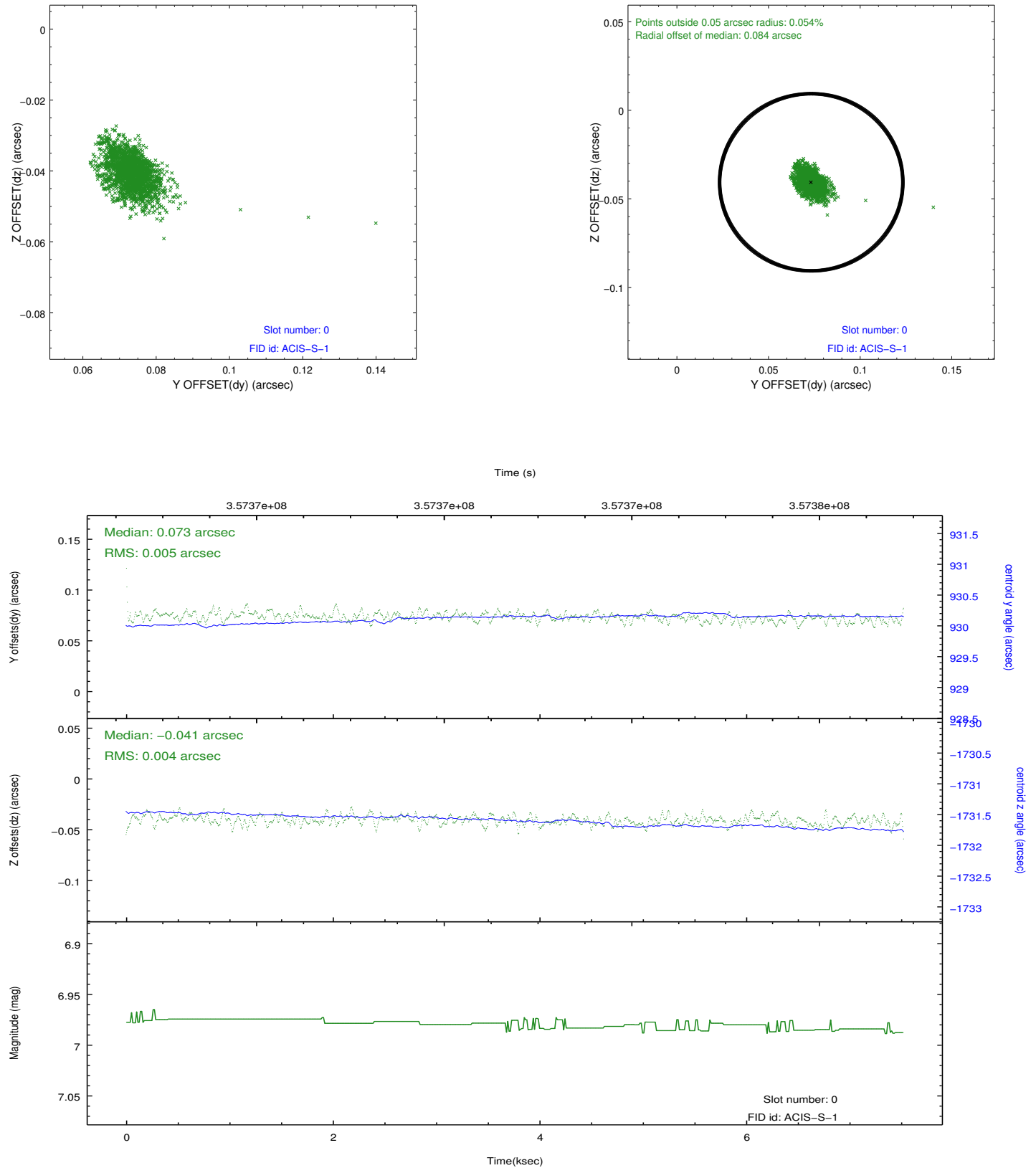


2.4.5 Slot 7

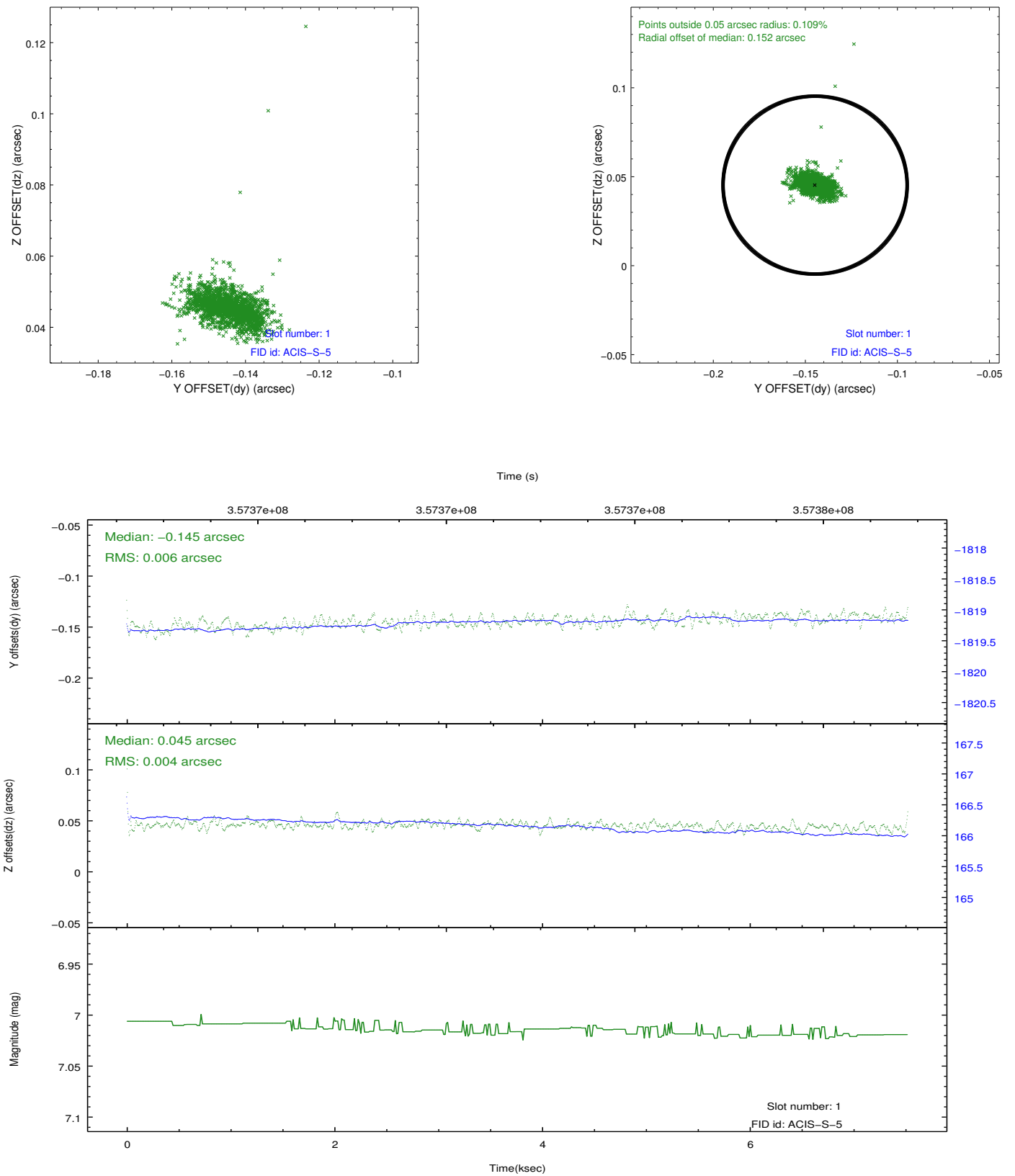


2.5 FID Slots

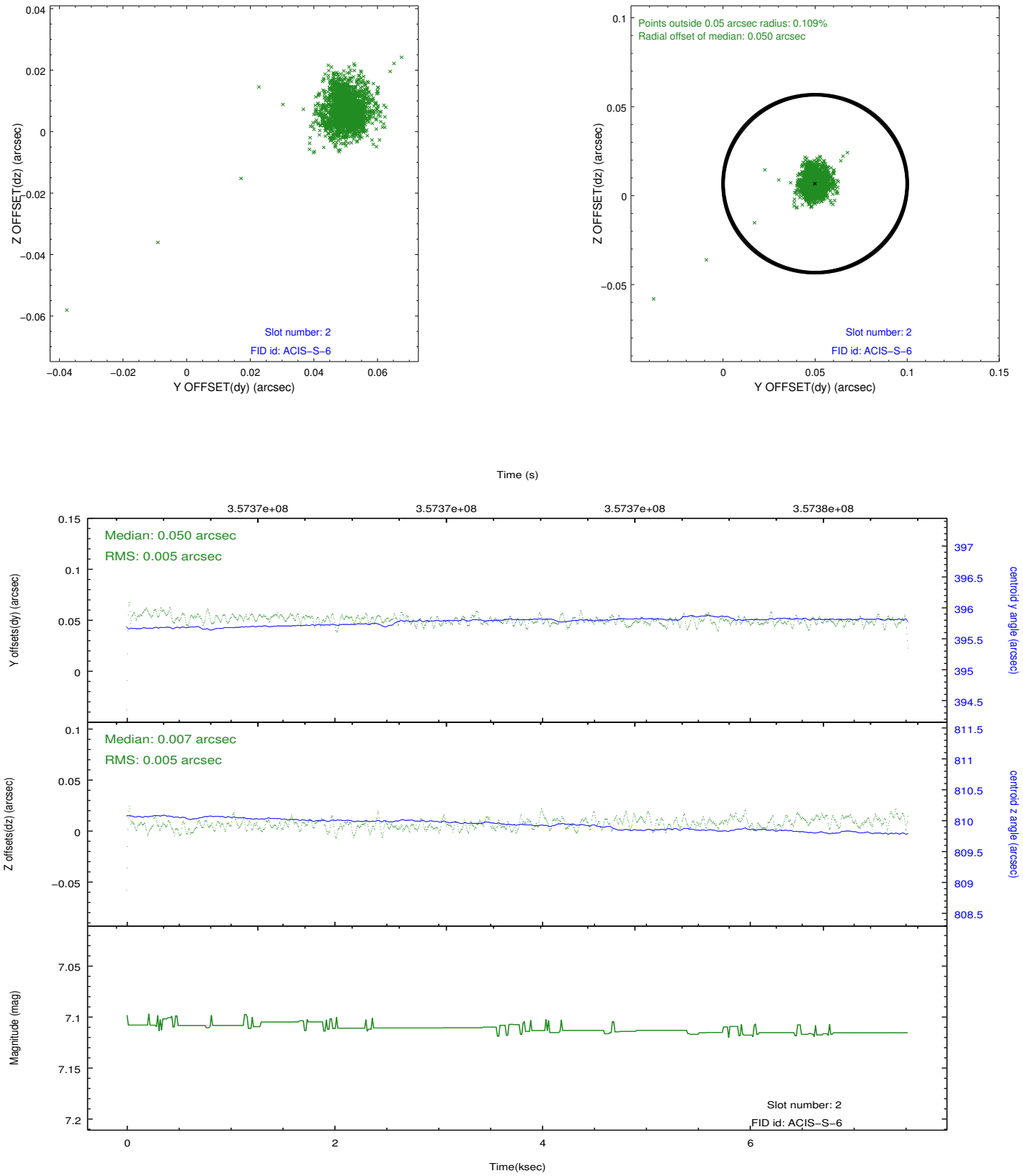
2.5.1 Slot 0



2.5.2 Slot 1



2.5.3 Slot 2



A Summary

A.1 Status

V&V Scientist	Jen Lauer
V&V Date (YYYY-MM-DD)	2012.06.08
V&V Edition	1
V&V Disposition and Status	OK
V&V Charge Time	6.53170005

A.2 Comments