

V&V Reference Report

L2 ASCDS Version : 8.4.4

Observation 10878 - L2 Version 2
Chandra X-Ray Center

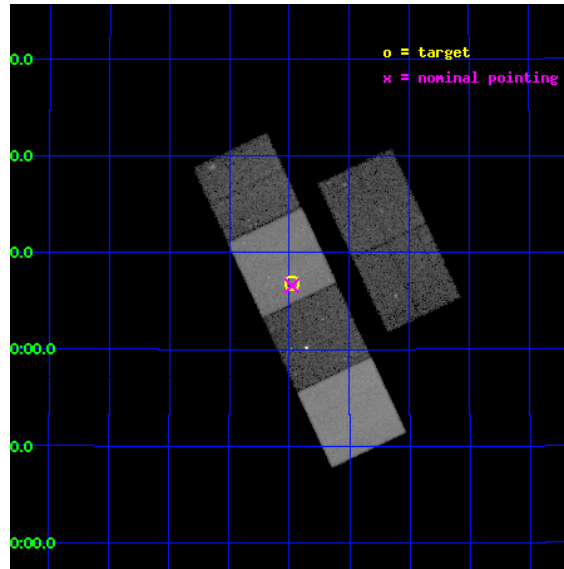
L2 Processing Date : Jun 2 2012

Contents

1	Front	2
2	OBI	3
2.1	OBI	3
2.1.1	Images	3
2.1.2	Bias	3
2.1.3	Parameters	4
2.1.4	Events	4
2.2	Compared Parameters	5
2.3	Aspect	6
2.4	Star Slots	9
2.4.1	Slot 3	9
2.4.2	Slot 4	10
2.4.3	Slot 5	11
2.4.4	Slot 6	12
2.4.5	Slot 7	13
2.5	FID Slots	14
2.5.1	Slot 0	14
2.5.2	Slot 1	15
2.5.3	Slot 2	16
A	Summary	17
A.1	Status	17
A.2	Comments	17

1 Front

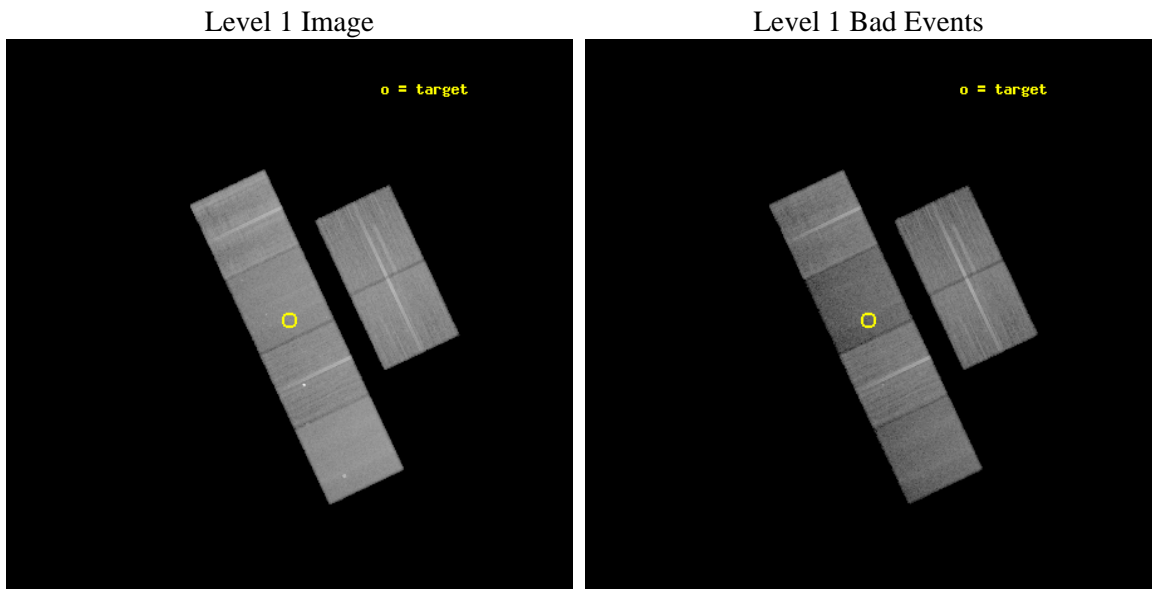
seq_num	501164	Sequence number
obs_id	10878	Observation id
title	Long GRB Jet Breaks	Proposal title
observer	Professor Gordon Garmire	Principal investigator
object	GRB 090102	Source name
dtcycle	0	
cycle	P	events from which exps? Prim/Second/Both
ra_targ	128.244167	Observer's specified target RA [deg]
dec_targ	33.114472	Observer's specified target Dec [deg]
ra_nom	128.2448271753	Nominal RA [deg]
dec_nom	33.109647346648	Nominal Dec [deg]
roll_nom	244.75763563565	Nominal Roll [deg]
revision	2	Processing version of data
ontime	27539.199897468	Sum of GTIs [s]
livetime	27190.481966251	Livetime [s]
ontime2	27539.199897468	Sum of GTIs [s]
ontime3	27539.199897468	Sum of GTIs [s]
ontime5	27539.199897468	Sum of GTIs [s]
ontime6	27539.199897468	Sum of GTIs [s]
ontime7	27539.199897468	Sum of GTIs [s]
ontime8	27535.958877146	Sum of GTIs [s]
l2events	320210	Number of level 2 events



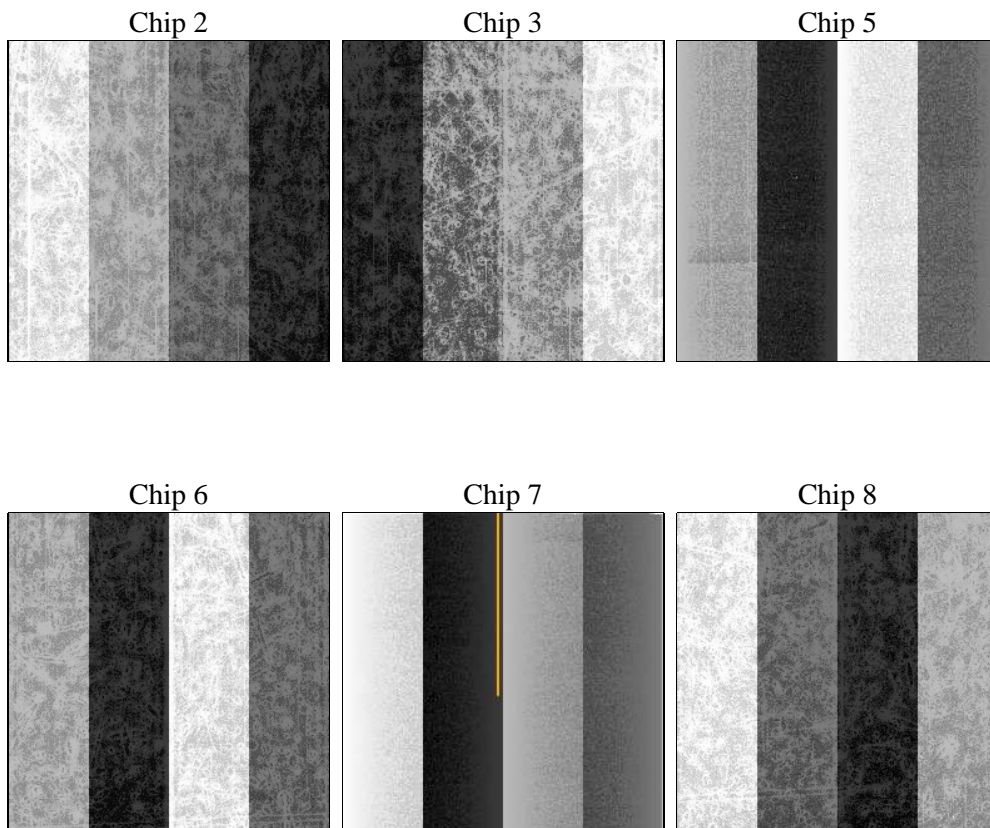
2 OBI

2.1 OBI

2.1.1 Images



2.1.2 Bias



2.1.3 Parameters

obi_num	0	Obi number	sched_exp_time	27500.000000	[s] Scheduled observation exposure time
ascdsver	8.4.4	Processing system revision	ontime	27539.199897468	Sum of GTIs [s]
caldsver	4.4.9	 	ontime2	27539.199897468	Sum of GTIs [s]
date	2012-06-02T15:32:30	Date and time of file creation	ontime3	27539.199897468	Sum of GTIs [s]
revision	2	Processing version of data	ontime5	27539.199897468	Sum of GTIs [s]
			ontime6	27539.199897468	Sum of GTIs [s]
			ontime7	27539.199897468	Sum of GTIs [s]
			ontime8	27535.958877146	Sum of GTIs [s]
			l1events	1432134	Number of level 1 events

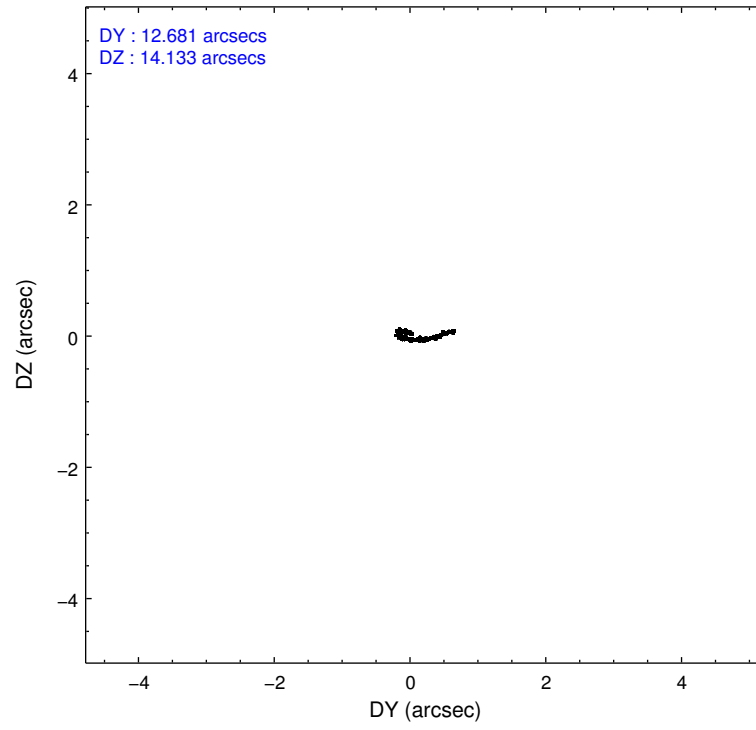
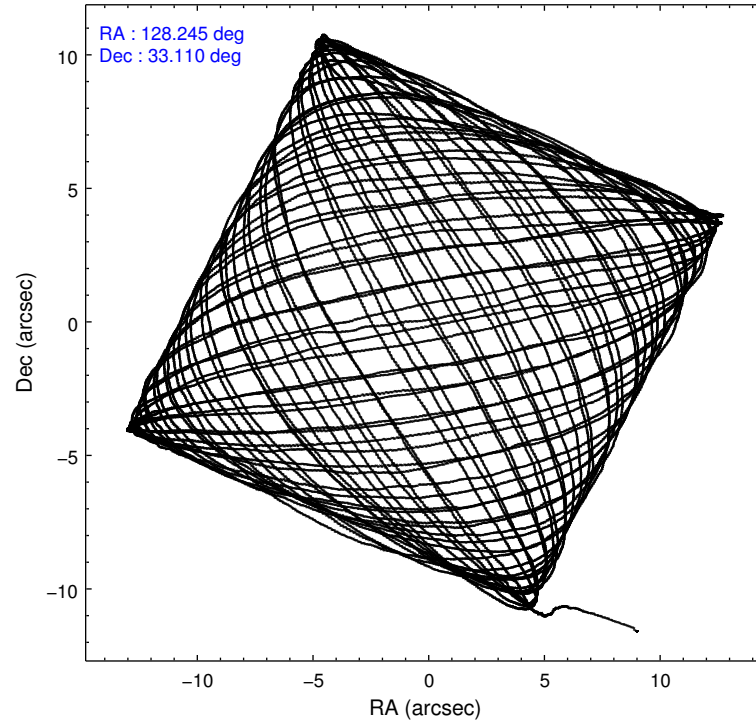
2.1.4 Events

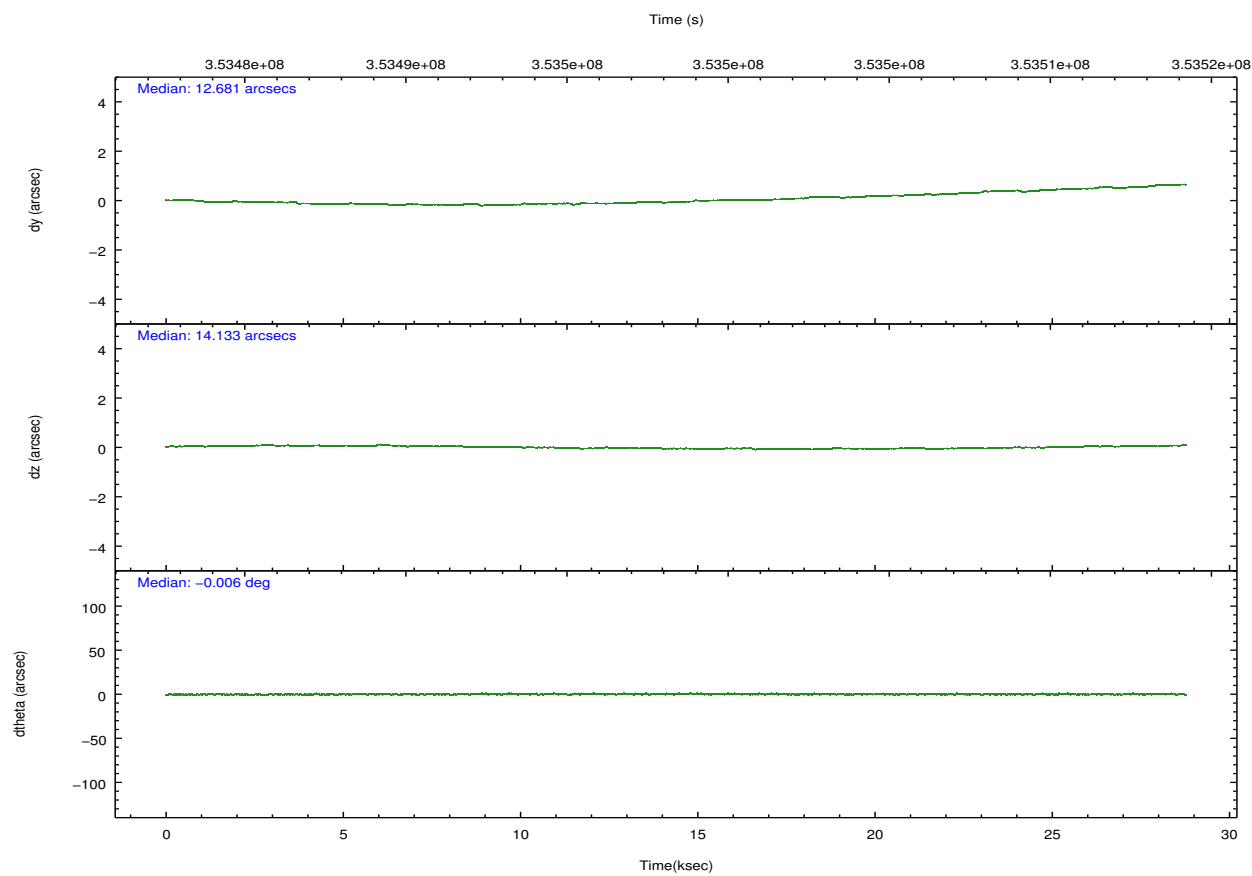
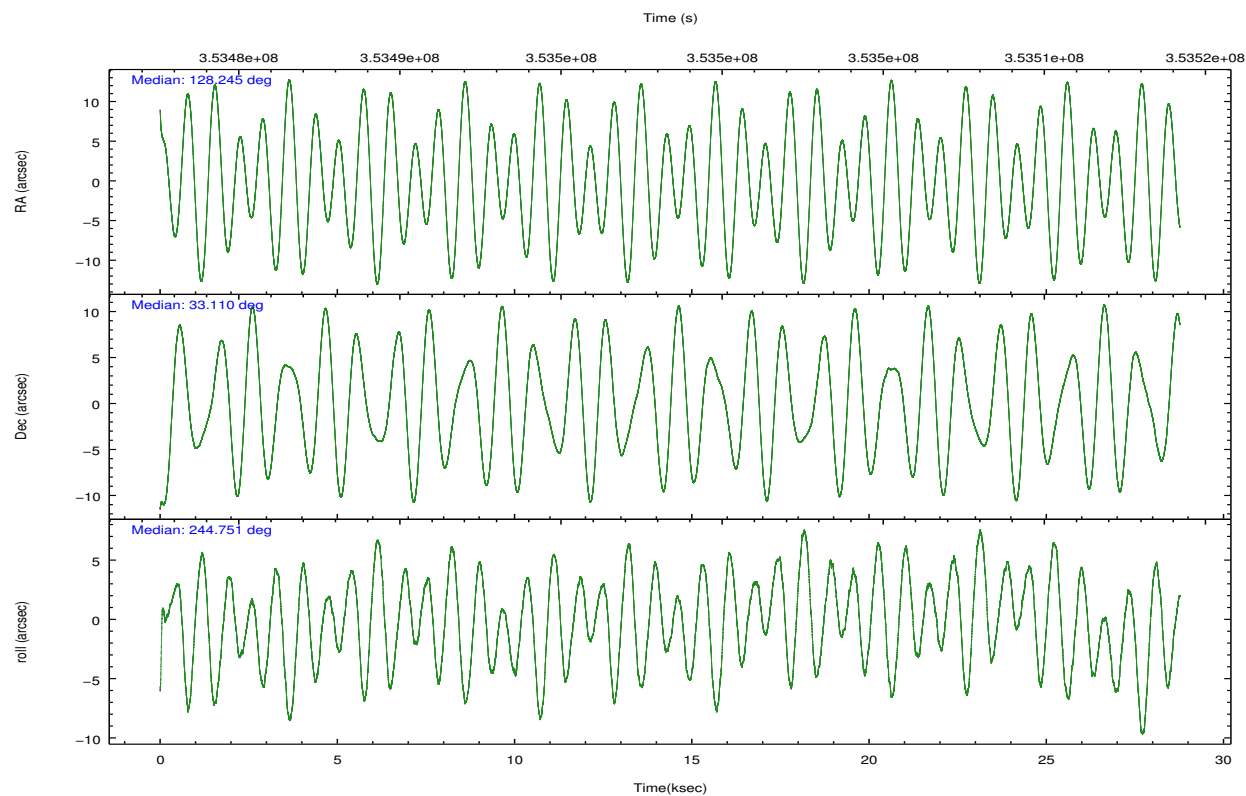
	ccd 2	ccd 3	ccd 5	ccd 6	ccd 7	ccd 8		ccd 2	ccd 3	ccd 5	ccd 6	ccd 7	ccd 8
level 1 events	235449	211521	274101	228197	212901	269965	grade 0 events	7842	7406	10463	12776	10427	19832
rejected events	214006	191349	131767	200002	108301	199861		3%	3%	3%	5%	4%	7%
rejected %	90%	90%	48%	87%	50%	74%	grade 1 events	135	128	590	168	338	234
								0%	0%	0%	0%	0%	0%
							grade 2 events	5261	4375	44489	5666	22824	16431
								2%	2%	16%	2%	10%	6%
							grade 3 events	2276	2260	6749	2525	9780	7813
								0%	1%	2%	1%	4%	2%
							grade 4 events	2272	2342	5835	2556	9518	7277
								0%	1%	2%	1%	4%	2%
							grade 5 events	6407	7505	22279	7925	22944	11396
								2%	3%	8%	3%	10%	4%
							grade 6 events	3793	3795	74831	4678	52068	18758
								1%	1%	27%	2%	24%	6%
							grade 7 events	207463	183710	108865	191903	85002	188224
								88%	86%	39%	84%	39%	69%

2.2 Compared Parameters

Parameter	Planned	Actual	Parameter	Planned	Actual
Instrument	ACIS	ACIS	Obspar format version number	7	7
Detector	ACIS-235678	ACIS-235678	Obspar file type	PREDICTED	ACTUAL
Grating	NONE	NONE	Obspar update status	NONE	UPDATED
Data mode	VFAINT	VFAINT	CCD I0 on	N	N
Observation mode	POINTING	POINTING	CCD I1 on	N	N
[deg] Pointing RA	128.241660	128.244827175303	CCD I2 on	O2	Y
[deg] Pointing Dec	33.136871	33.10964734664834	CCD I3 on	O3	Y
[deg] Pointing Roll	244.602740	244.757635635647	CCD S0 on	N	N
[mm] SIM focus pos	-0.684267	-0.6828225247311905	CCD S1 on	O1	Y
[mm] SIM defocus	0	0.001444936568705701	CCD S2 on	O5	Y
[mm] SIM translation stage pos	-190.132523	-190.1400660498719	CCD S3 on	Y	Y
[mm] SIM translation stage offset	0	0.00754346686406393	CCD S4 on	O4	Y
[s] Observation start time (MET)	353485270.184000	353483373.44883	CCD S5 on	N	N
Observation start date	2009-03-15T06:20:04	2009-03-15T05:49:33	Number of optional ACIS chips dropped	0	0
[s] Observation end time (MET)	353512770.184000	353513224.52531	On-chip summing requested	N	N
Observation end date	2009-03-15T13:58:24	2009-03-15T14:07:04	Subarray requested	NONE	NONE
Read mode	TIMED	TIMED	Alternating exposures requested	N	N
			[s] Primary exposure time	0.000000	3.2

2.3 Aspect



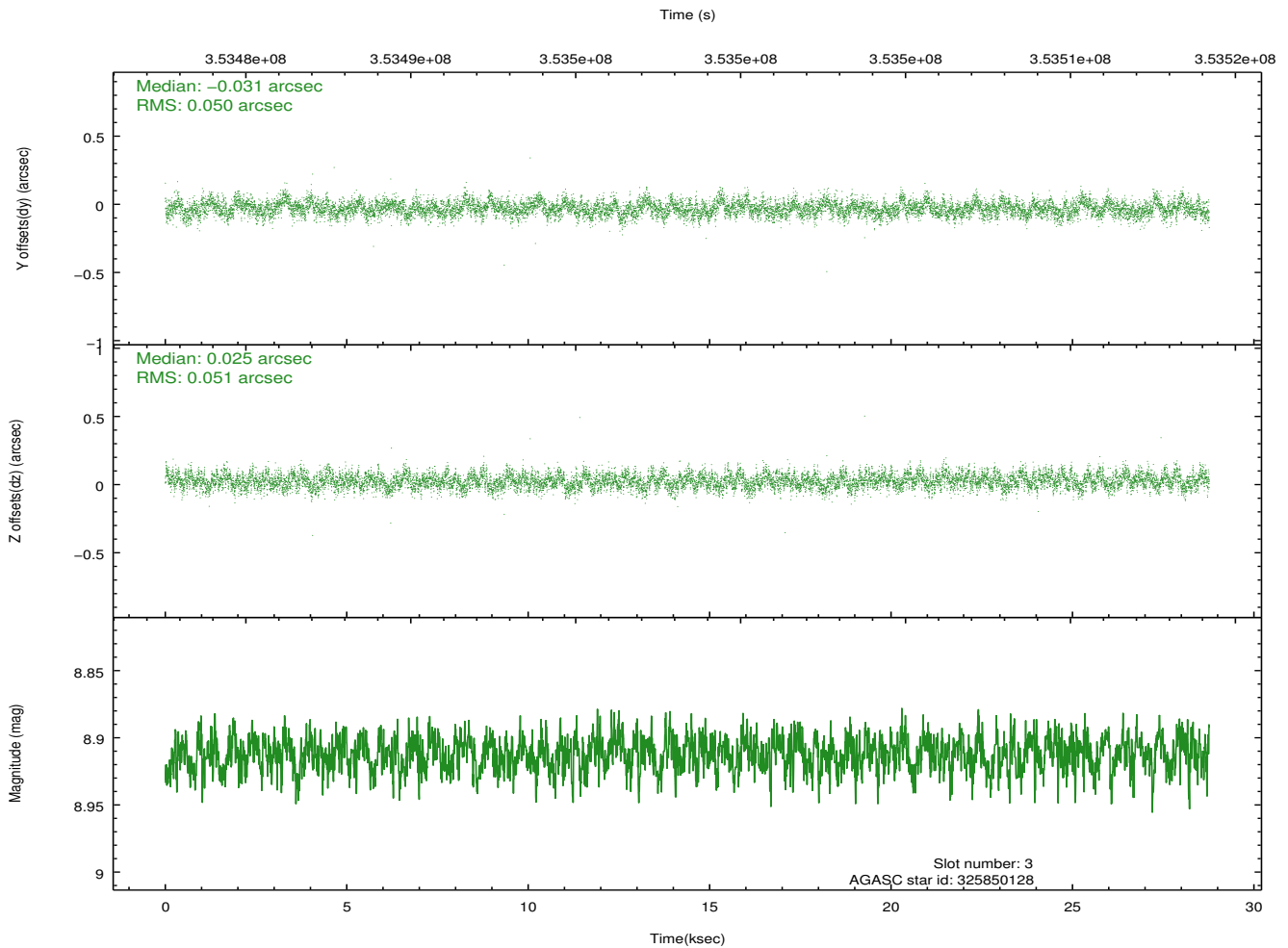
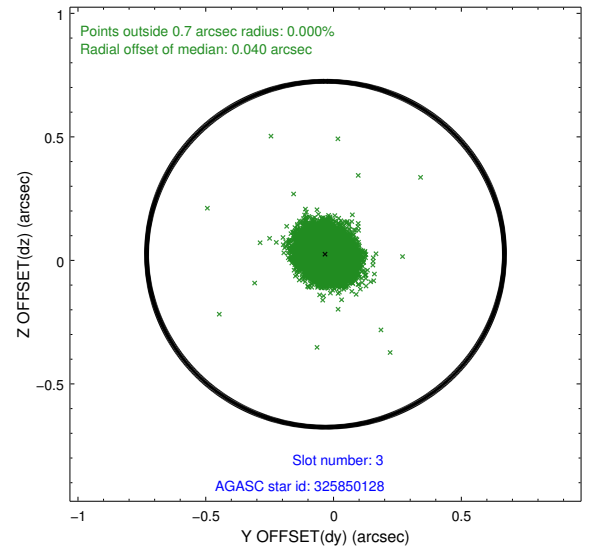
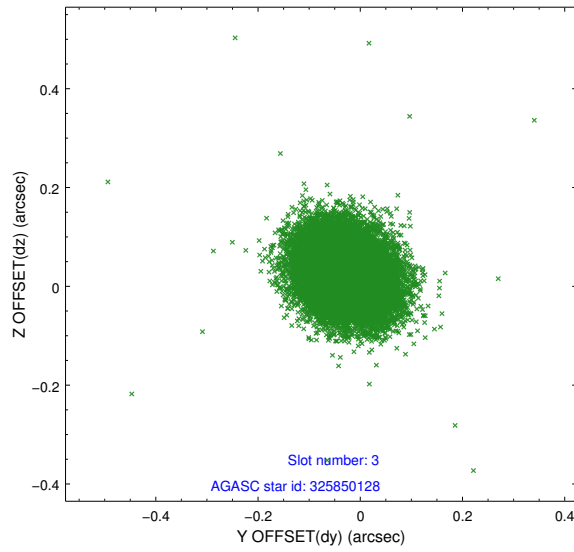


Slot Statistics

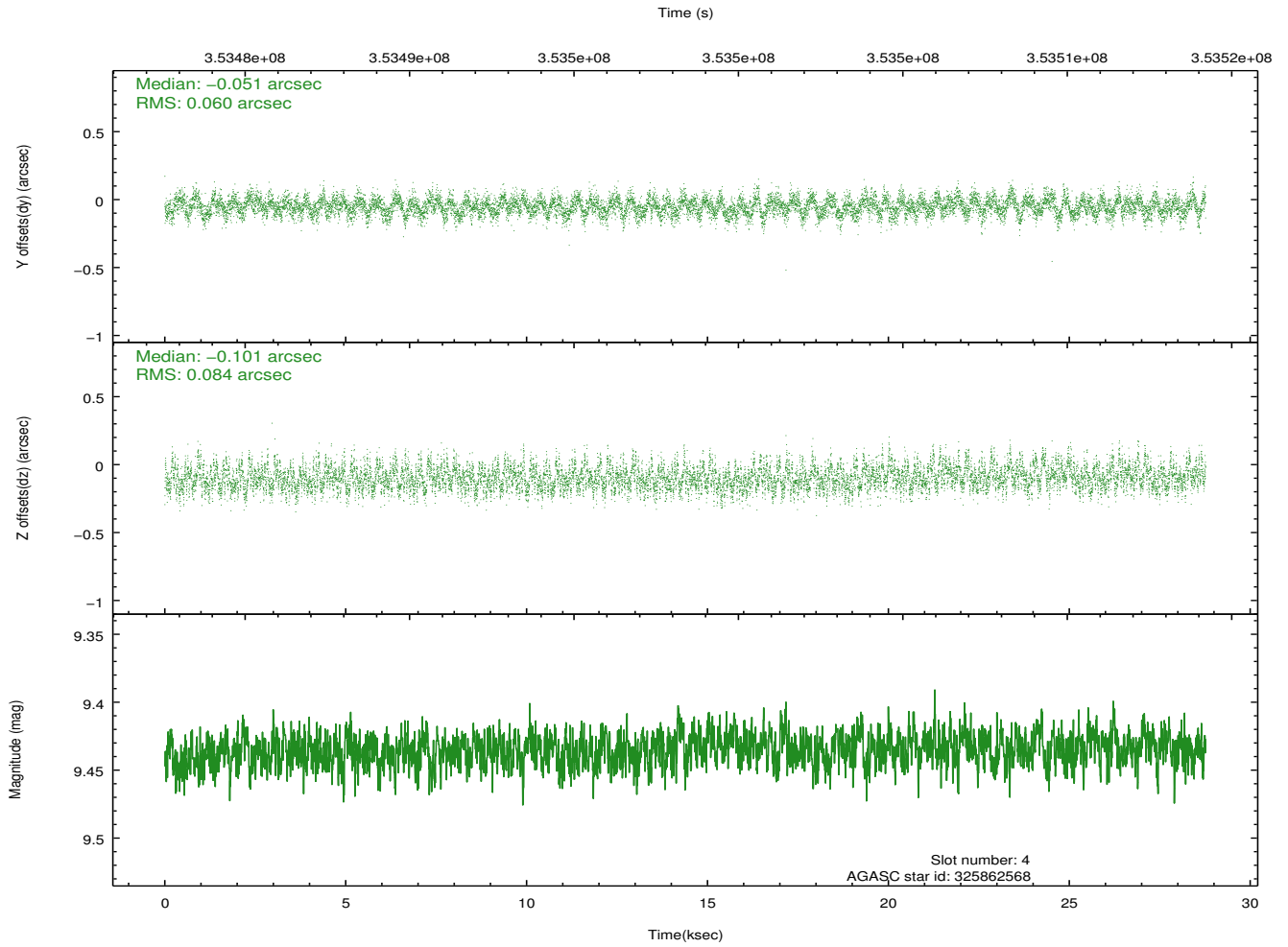
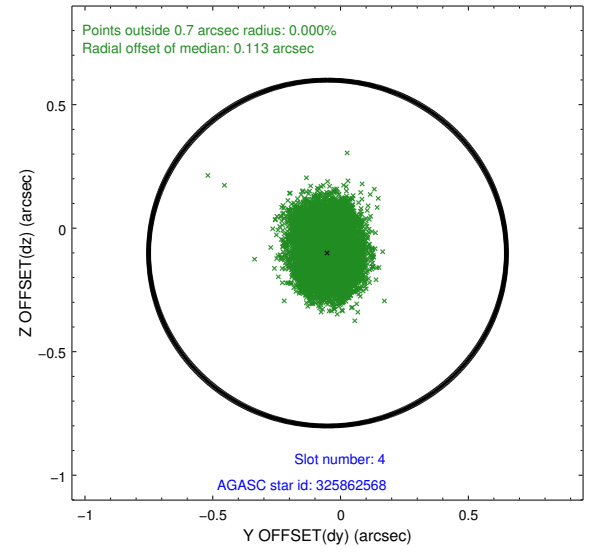
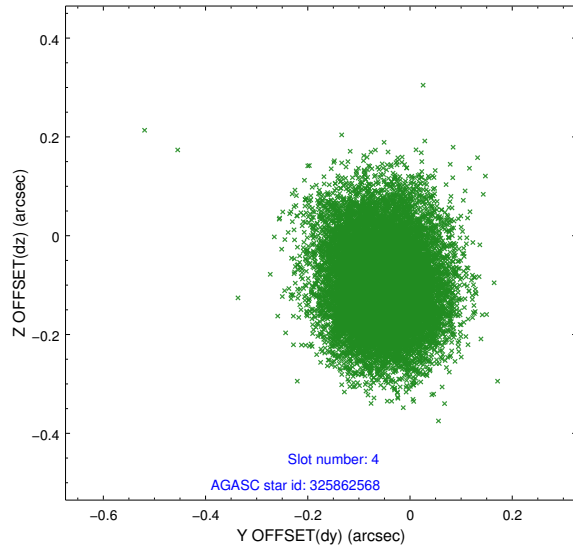
slot	status	id	mag	n_pts	med_dy	med_dz	dr1	dr2	ra	dec	mean_y	mean_z
0	FID	ACIS-S-1	7.00	7017	0.075	-0.028	0.012	0.024	0.000000	0.000000	930.47	-1731.13
1	FID	ACIS-S-5	7.04	7017	-0.124	0.056	0.008	0.014	0.000000	0.000000	-1818.71	166.38
2	FID	ACIS-S-6	7.13	7016	0.028	-0.018	0.010	0.018	0.000000	0.000000	395.85	810.39
3	GUIDE	325850128	8.91	13974	-0.031	0.025	0.075	0.121	128.006537	33.170352	194.38	-691.85
4	GUIDE	325862568	9.44	14021	-0.051	-0.101	0.109	0.179	127.808098	33.641064	-1084.38	-1953.67
5	GUIDE	325848528	9.36	13990	0.004	-0.114	0.128	0.204	128.890961	32.792079	273.02	2304.88
6	GUIDE	325859552	9.63	14014	0.073	0.060	0.133	0.214	128.318446	33.774353	-2171.35	-776.70
7	GUIDE	325854560	9.36	14019	0.008	0.131	0.111	0.177	128.723716	32.582536	1172.42	2175.80

2.4 Star Slots

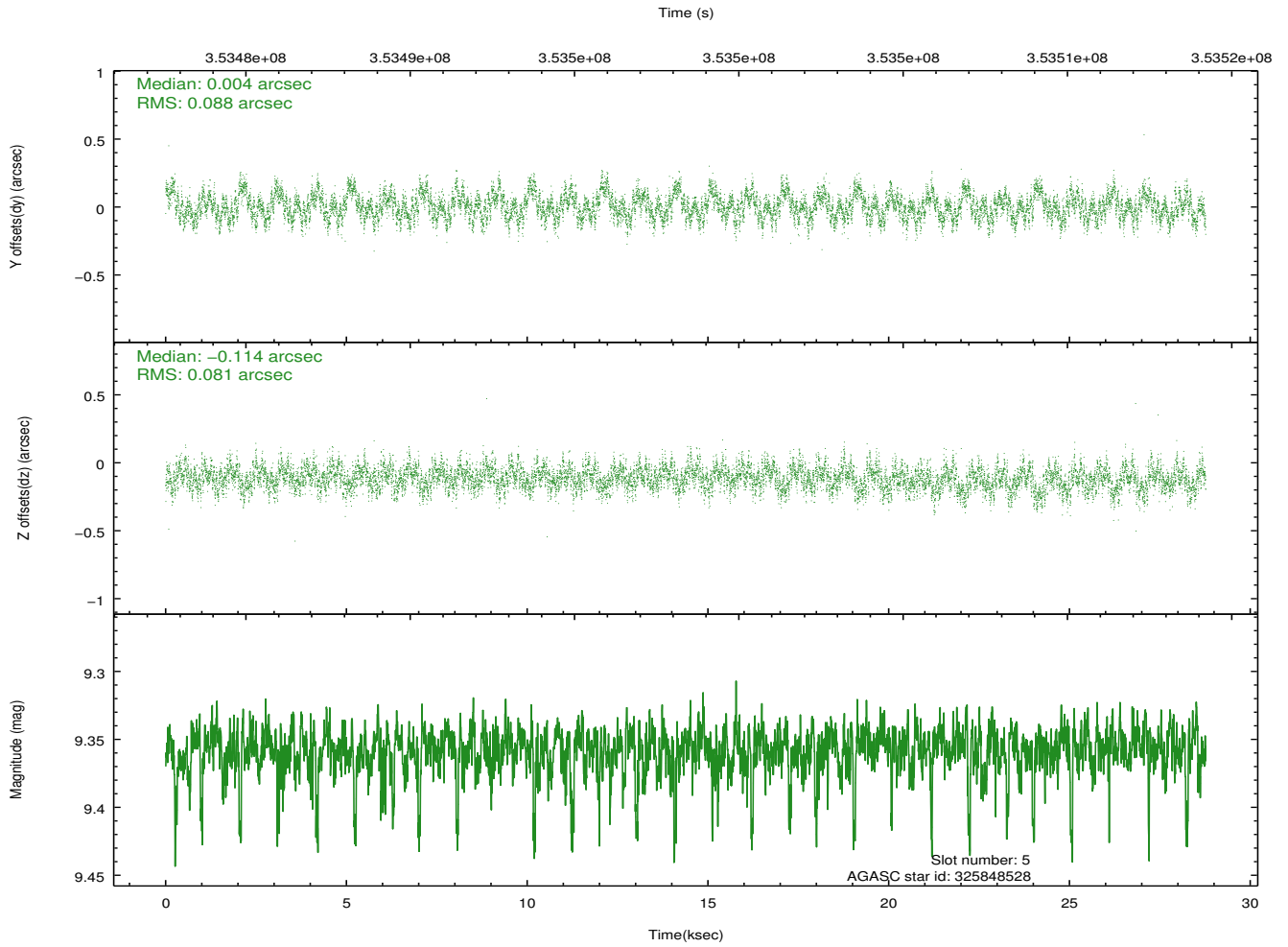
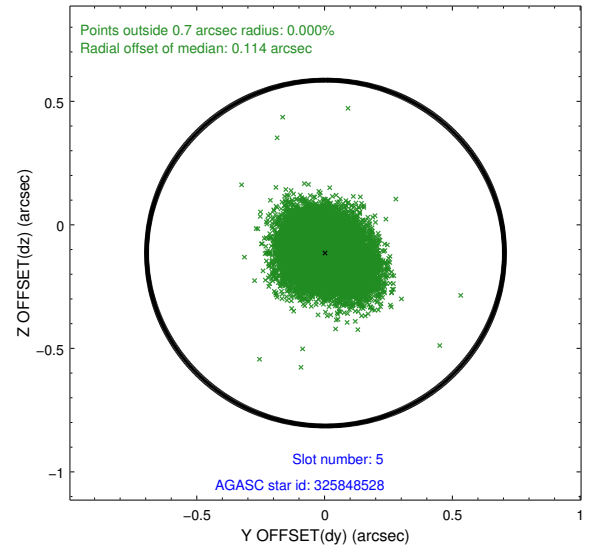
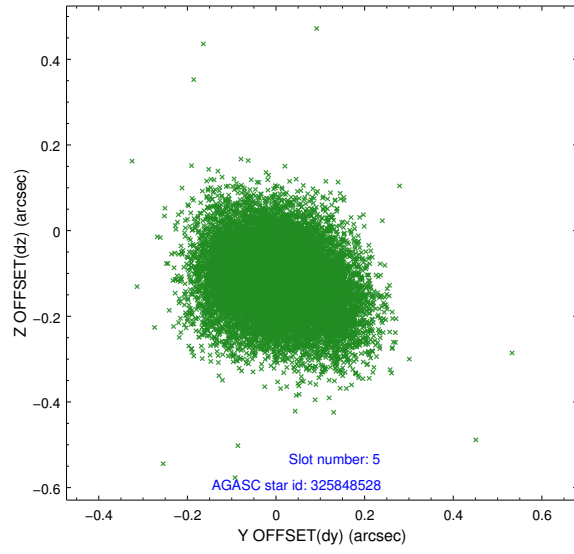
2.4.1 Slot 3



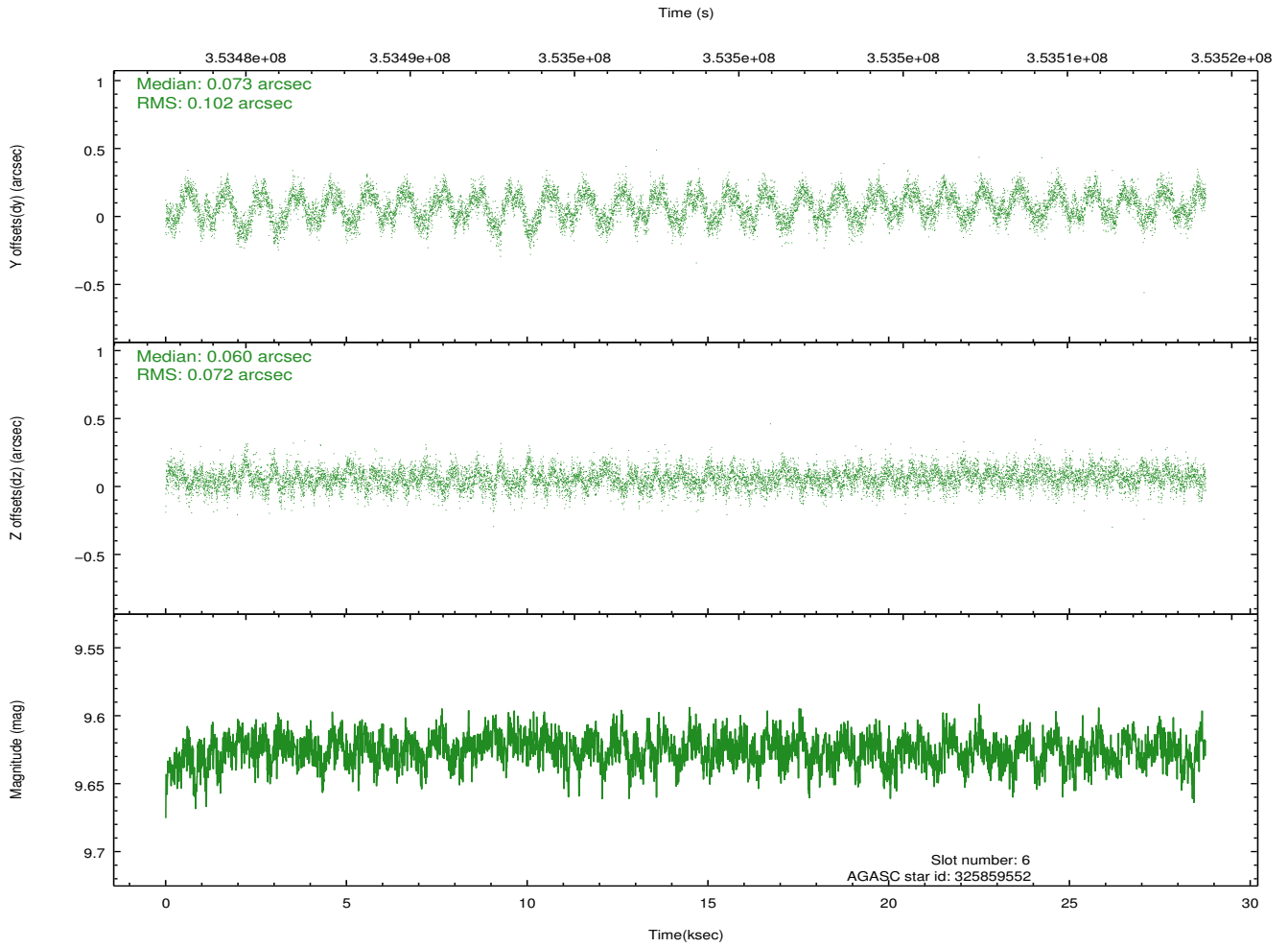
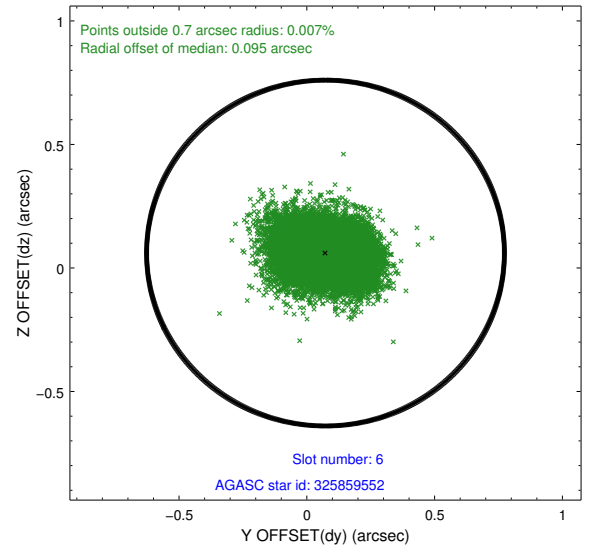
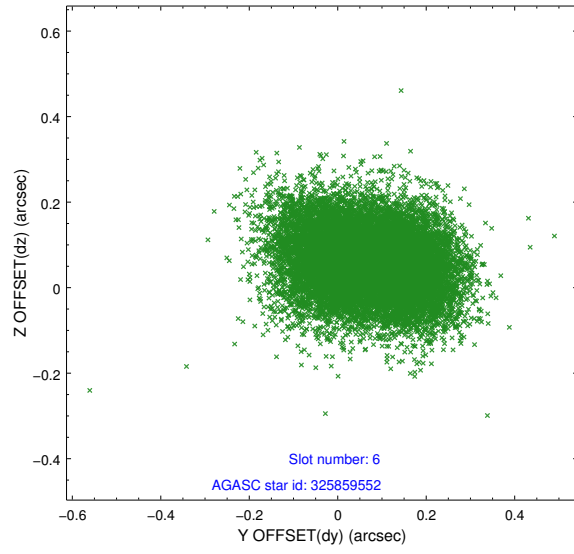
2.4.2 Slot 4



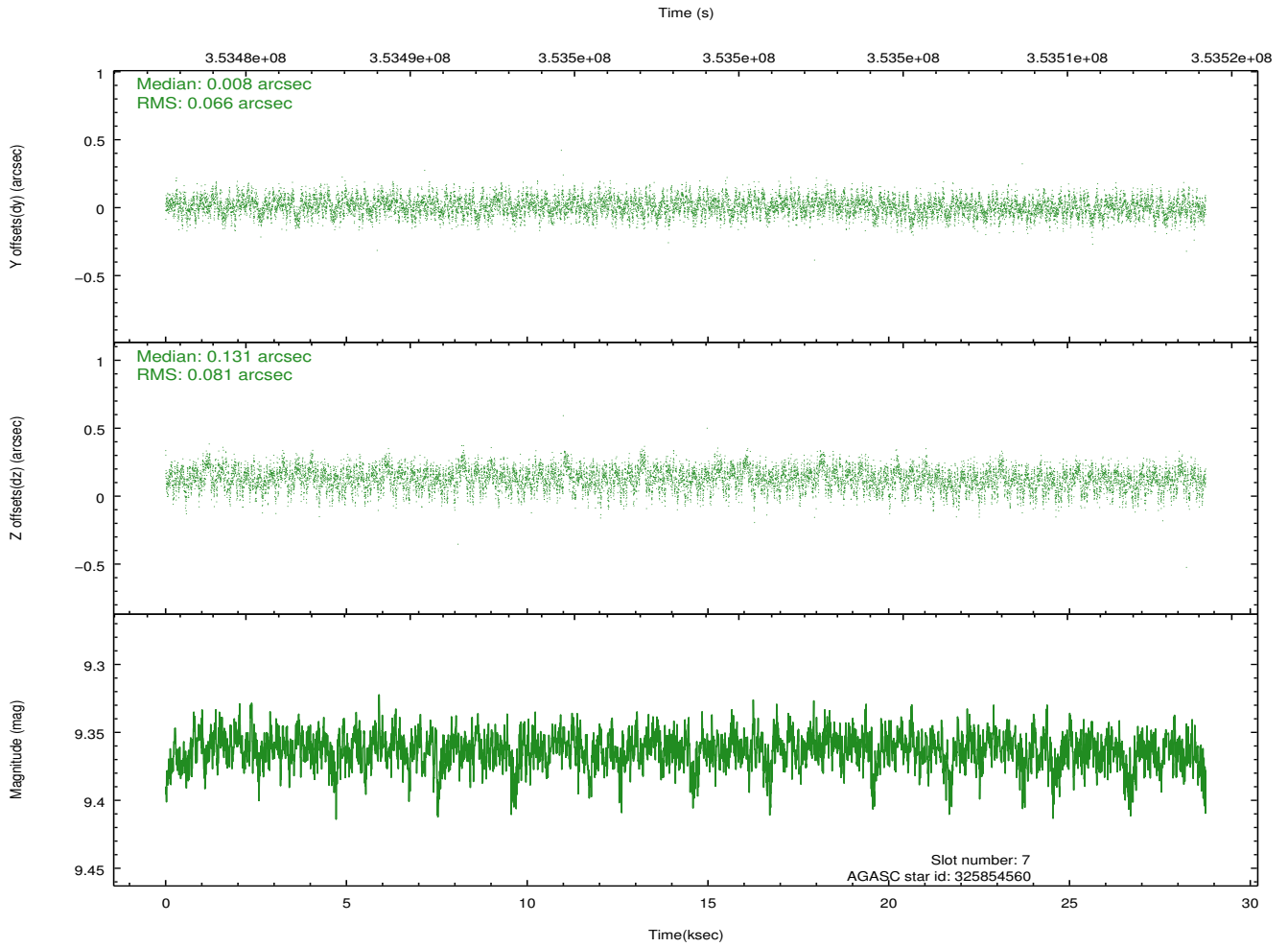
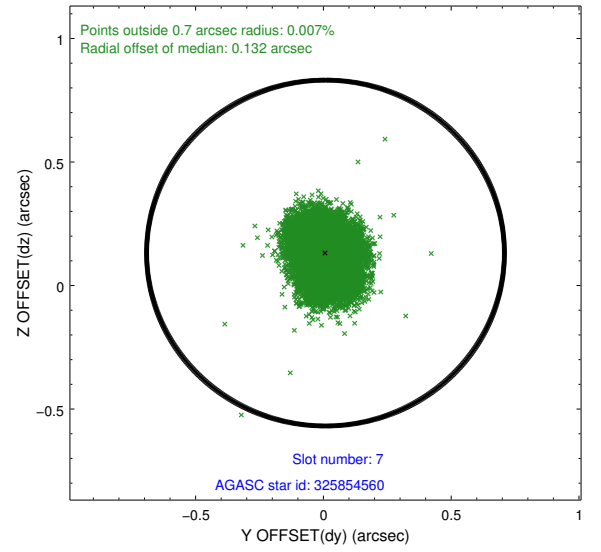
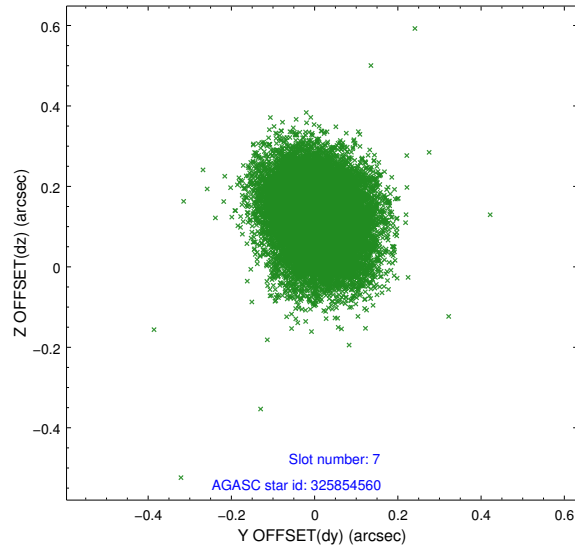
2.4.3 Slot 5



2.4.4 Slot 6

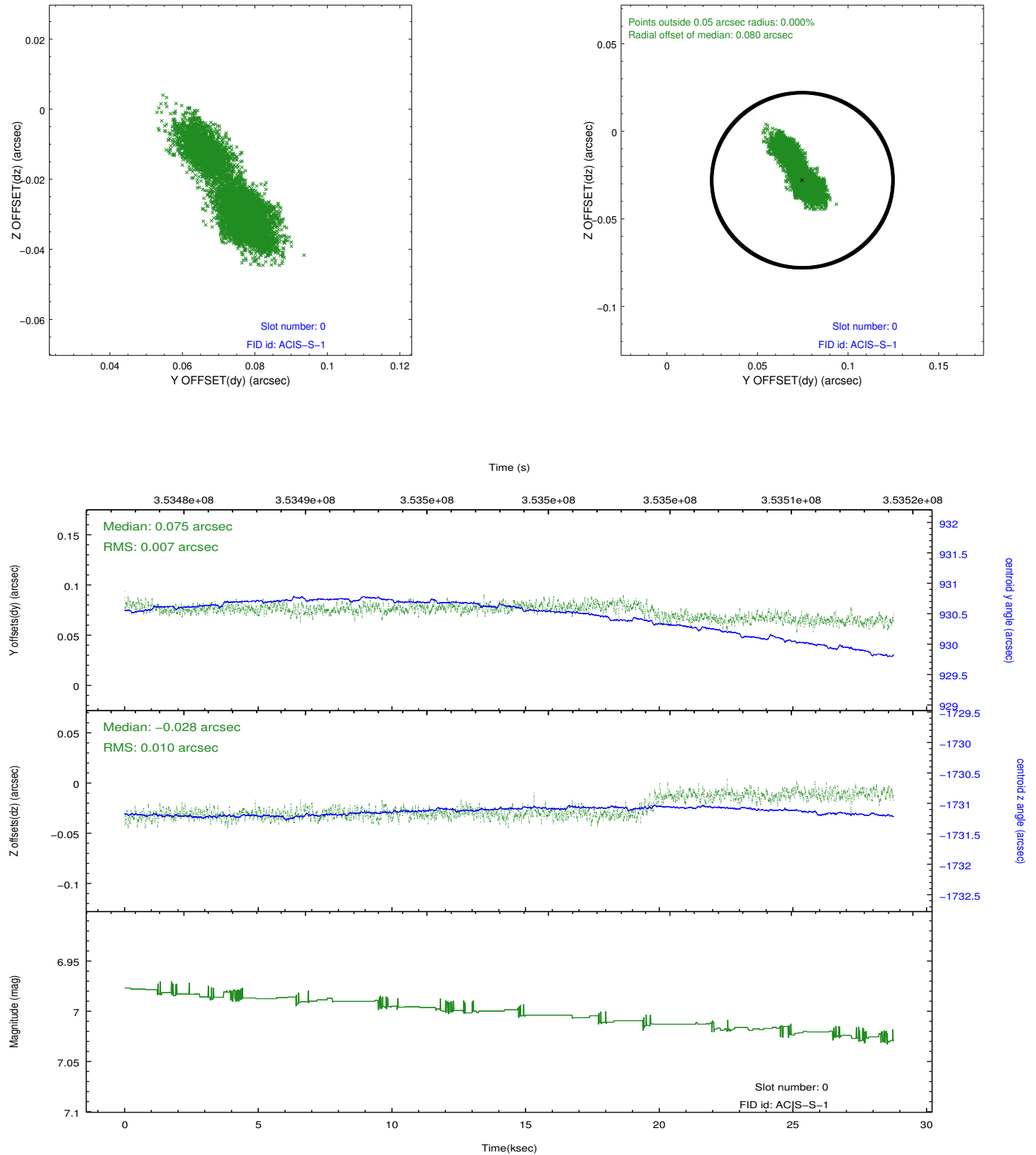


2.4.5 Slot 7

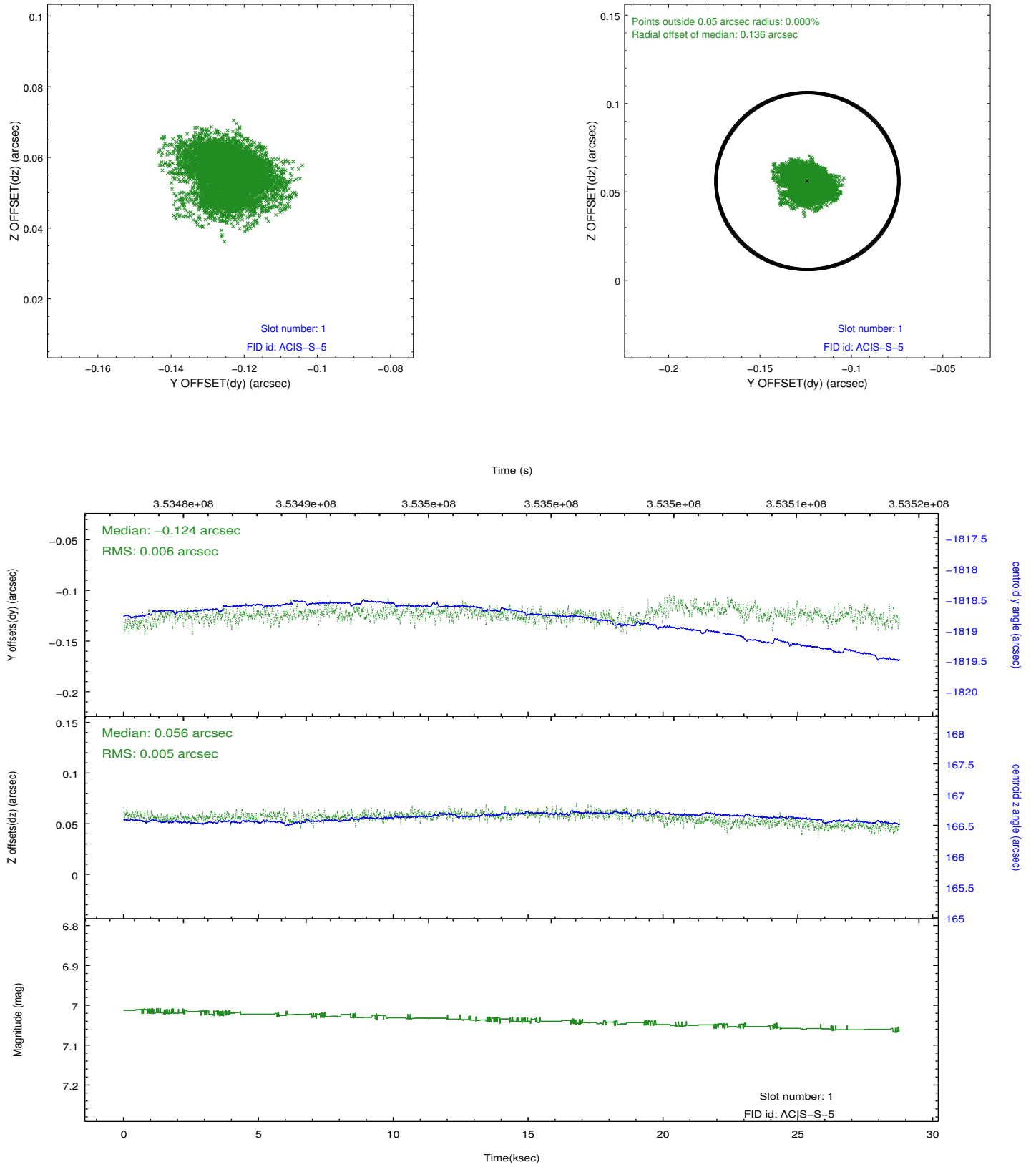


2.5 FID Slots

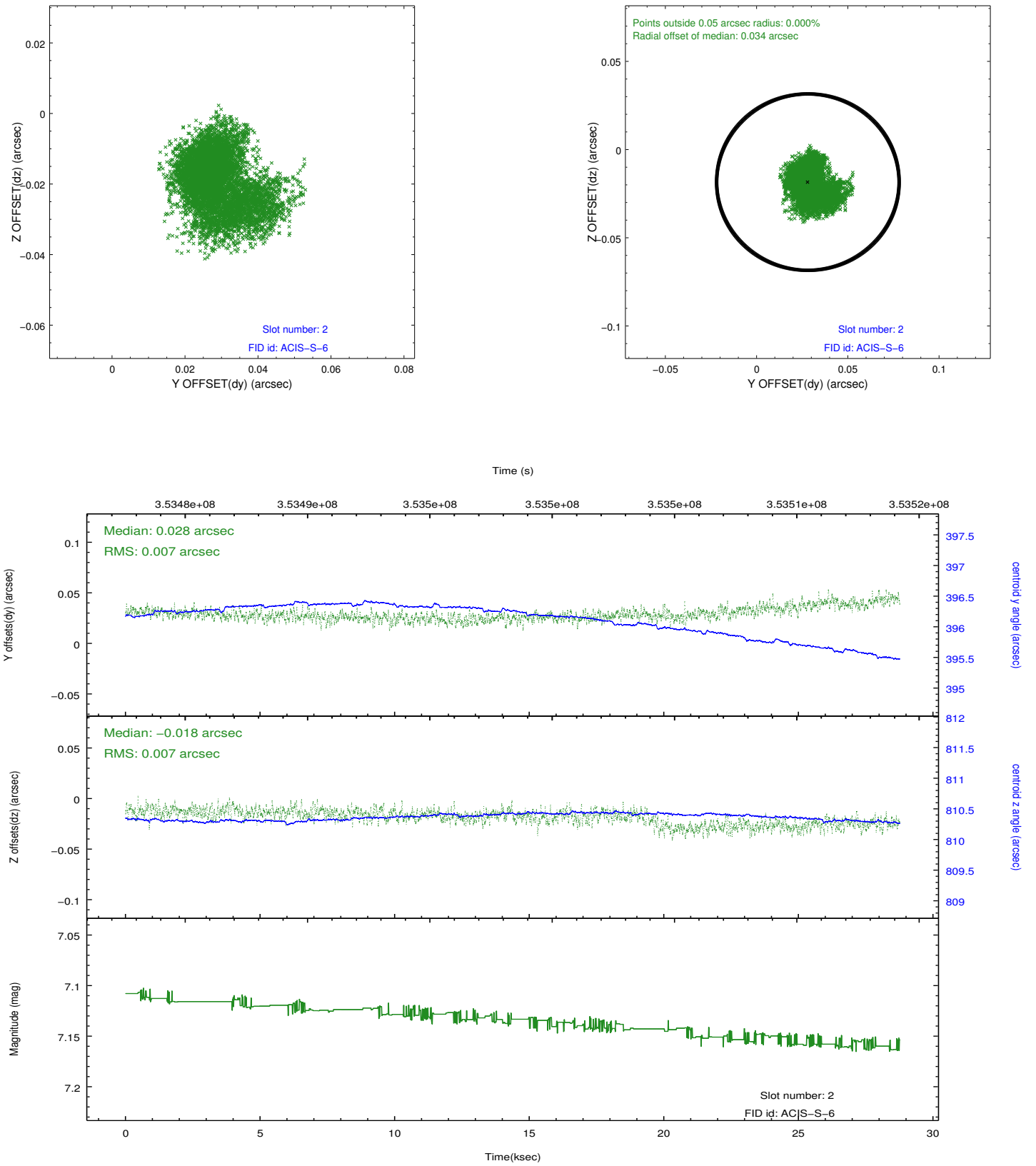
2.5.1 Slot 0



2.5.2 Slot 1



2.5.3 Slot 2



A Summary

A.1 Status

V&V Scientist	Beth Sundheim
V&V Date (YYYY-MM-DD)	2012.06.07
V&V Edition	1
V&V Disposition and Status	OK
V&V Charge Time	27.5391998

A.2 Comments