

V&V Reference Report

L2 ASCDS Version : 8.4.4

Observation 10698 - L2 Version 4
Chandra X-Ray Center

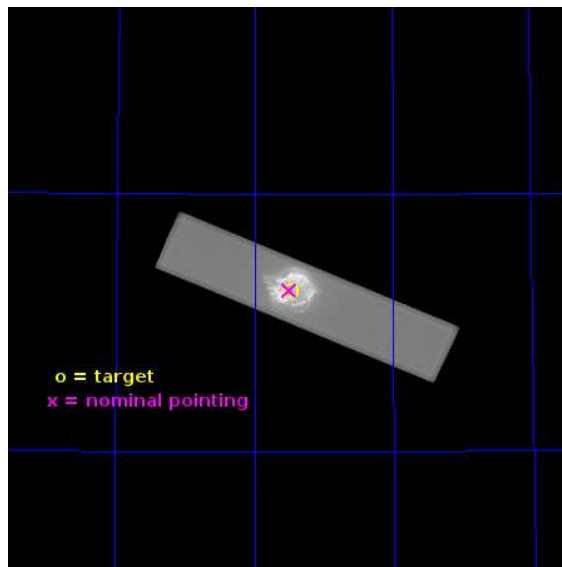
L2 Processing Date : Jun 29 2013

Contents

1	Front	2
2	OBI	3
2.1	OBI	3
2.1.1	Images	3
2.1.2	Parameters	4
2.1.3	Events	4
2.2	Compared Parameters	5
2.3	Aspect	6
2.4	Star Slots	9
2.4.1	Slot 3	9
2.4.2	Slot 4	10
2.4.3	Slot 5	11
2.4.4	Slot 6	12
2.4.5	Slot 7	13
2.5	FID Slots	14
2.5.1	Slot 0	14
2.5.2	Slot 1	15
2.5.3	Slot 2	16
A	Summary	17
A.1	Status	17
A.2	Comments	17

1 Front

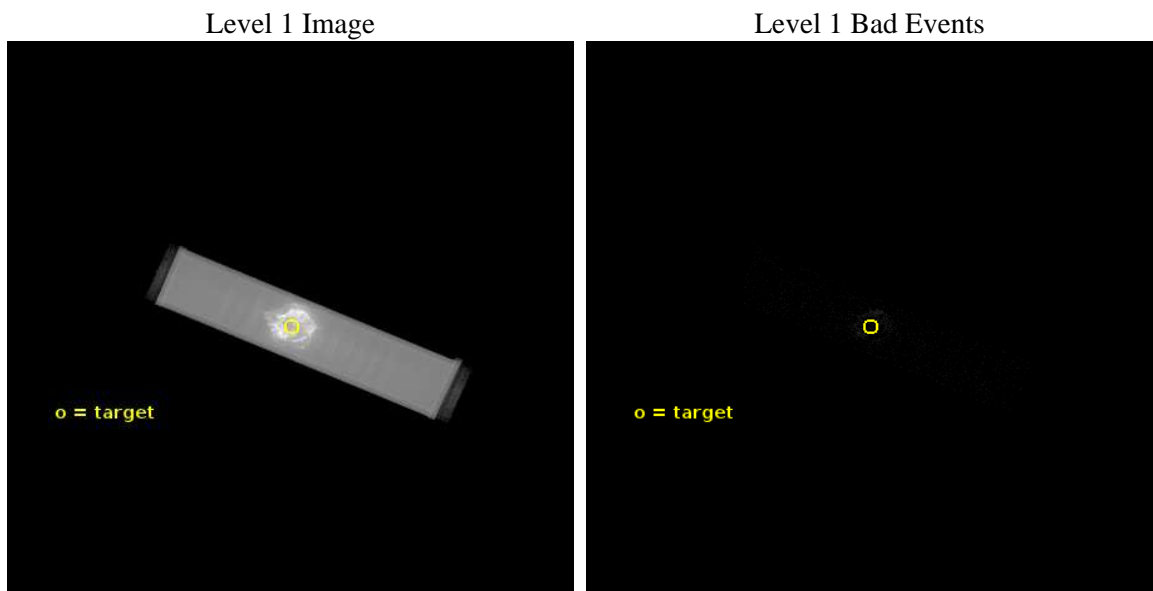
seq_num	501154	Sequence number
obs_id	10698	Observation id
title	The Spin and Magnetic Moment of the Neutron Star in Cassiopeia A	P
observer	Prof. Deepto Chakrabarty	Principal investigator
object	Cas-A CCO	Source name
ra_targ	350.86625	Observer's specified target RA [deg]
dec_targ	58.811806	Observer's specified target Dec [deg]
ra_nom	350.87476282312	Nominal RA [deg]
dec_nom	58.813596925265	Nominal Dec [deg]
roll_nom	23.199932229328	Nominal Roll [deg]
revision	4	Processing version of data
ontime	51969.552585065	[s]
livetime	51394.668684613	Ontime multiplied by DTCOR
l2events	7239624	Number of level 2 events



2 OBI

2.1 OBI

2.1.1 Images



2.1.2 Parameters

obi_num	0	Obi number	sched_exp_time	51800.000000	[s] Scheduled observation exposure time
ascdsver	10	Processing system revision	ontime	51969.552585065	[s]
caldsver	4.5.7	 	l1events	8495140	Number of level 1 events
date	2013-06-29T05:40:51	Date and time of file creation			
revision	4	Processing version of data			

2.1.3 Events

Level 1 Events

	segment 1	segment 2	segment 3
level 1 events	4595	8490534	11
rejected events	109	102074	5
rejected %	2%	1%	45%

2.2 Compared Parameters

Parameter	Planned	Actual
Instrument	HRC	HRC
Detector	HRC-S	HRC-S
Grating	NONE	NONE
Data mode	OBSERVING	OBSERVING
Observation mode	POINTING	POINTING
[deg] Pointing RA	350.843824	350.8747628231177
[deg] Pointing Dec	58.789805	58.81359692526523
[deg] Pointing Roll	23.159062	23.19993222932768
[mm] SIM focus pos	-1.533336	-1.526339935833849
[mm] SIM defocus	7.710433287538843e-07	0.006996703570447904
[mm] SIM translation stage pos	250.455976	250.466033080201
[mm] SIM translation stage offset	0	-0.01005468664627074
[s] Observation start time (MET)	354904454.184000	354903277.31941
Observation start date	2009-03-31T16:33:08	2009-03-31T16:14:37
[s] Observation end time (MET)	354956254.184000	354957318.90959
Observation end date	2009-04-01T06:56:28	2009-04-01T07:15:18

Parameter	Planned	Actual
Obspar format version number	7	7
Obspar file type	PREDICTED	ACTUAL
Obspar update status	NONE	UPDATED

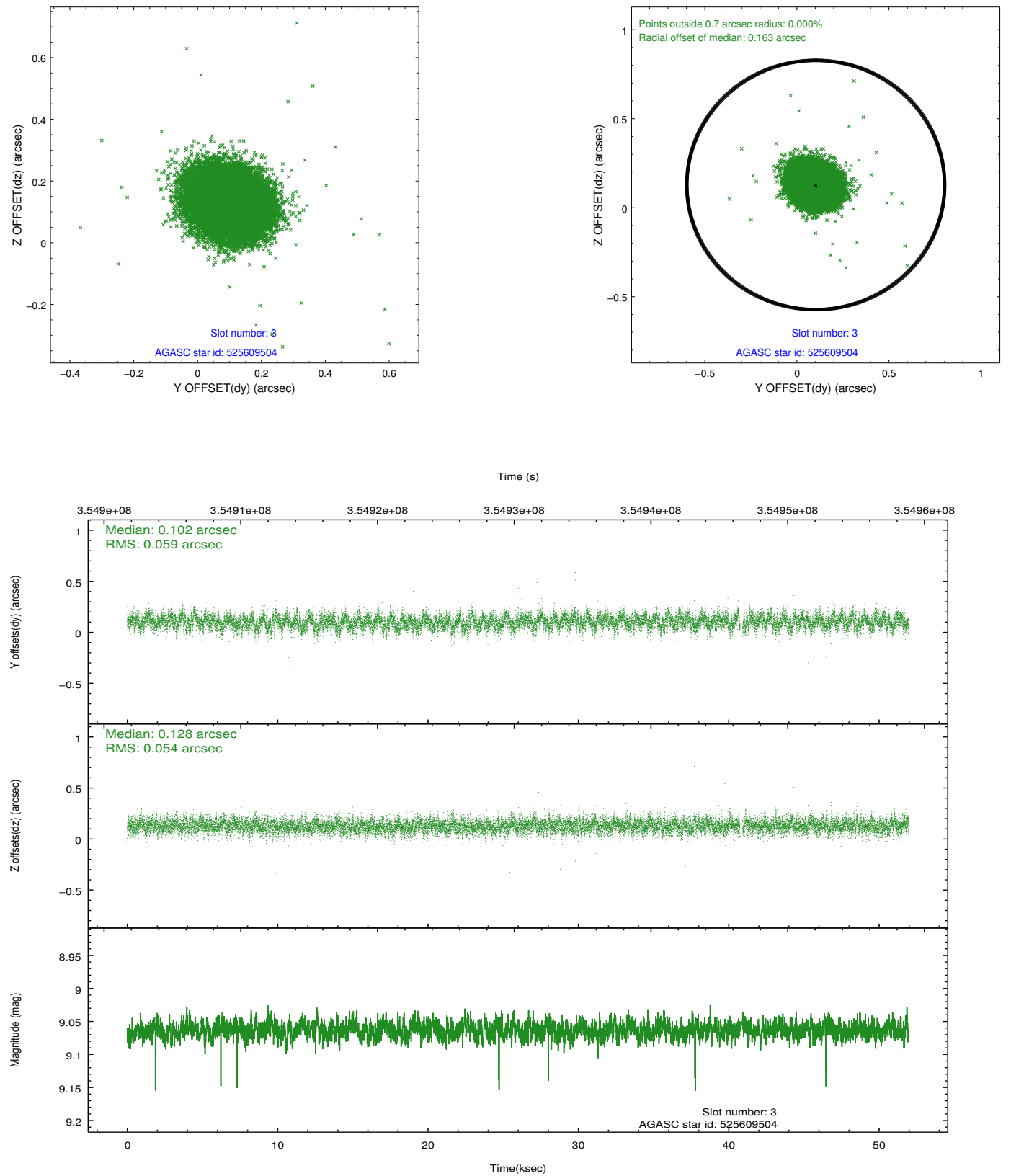
2.3 Aspect

Slot Statistics

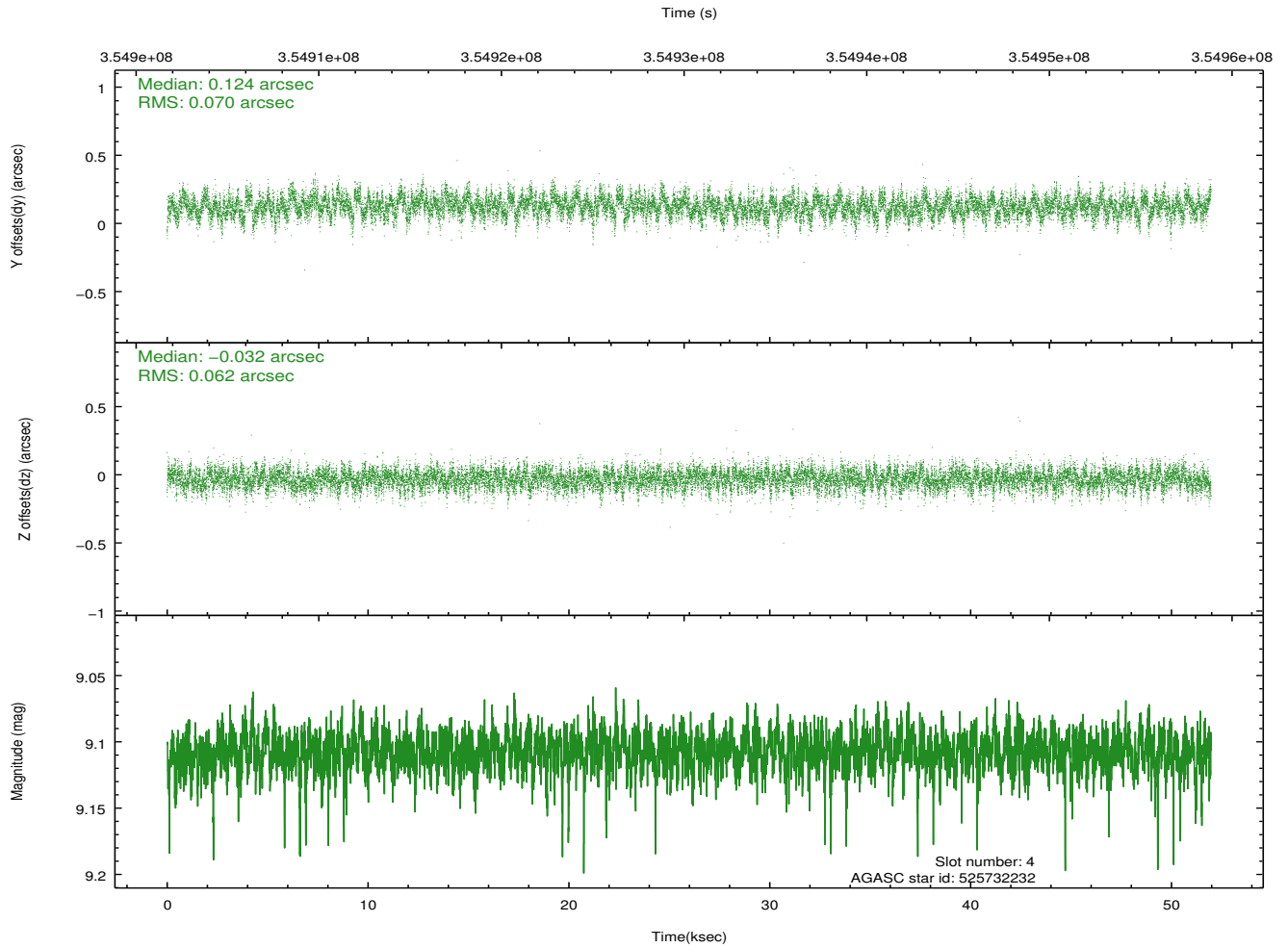
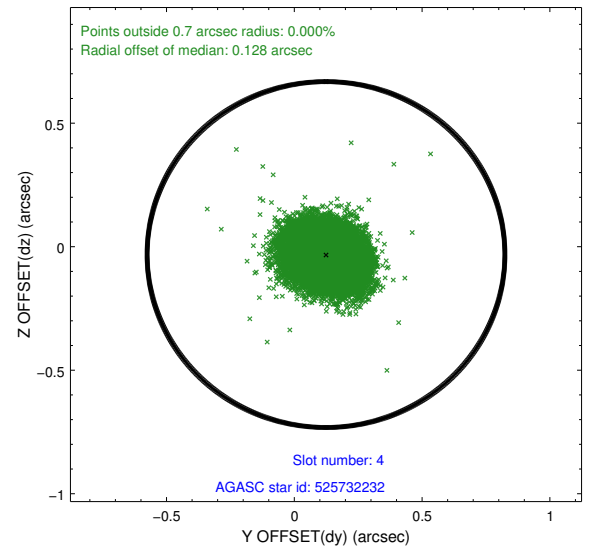
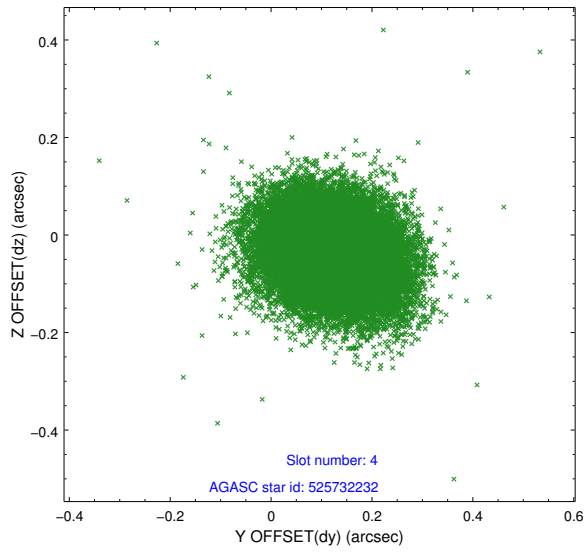
slot	status	id	mag	n_pts	med_dy	med_dz	dr1	dr2	ra	dec	mean_y	mean_z
0	FID	HRC-S-1	7.05	12677	0.045	-0.195	0.012	0.038	0.000000	0.000000	-1169.83	-465.69
1	FID	HRC-S-3	7.05	12676	0.115	-0.039	0.023	0.051	0.000000	0.000000	-1172.60	563.95
2	FID	HRC-S-4	6.99	12675	0.232	-0.063	0.014	0.027	0.000000	0.000000	1228.48	566.62
3	GUIDE	525609504	9.06	25244	0.102	0.128	0.084	0.136	349.896632	58.356658	-2252.86	-718.05
4	GUIDE	525732232	9.11	25304	0.124	-0.032	0.098	0.161	351.669550	58.757012	1375.82	-707.16
5	GUIDE	525732488	8.42	25338	0.002	0.101	0.069	0.108	350.087090	58.516915	-1690.79	-335.99
6	GUIDE	525735456	7.05	25352	-0.268	-0.257	0.061	0.097	350.628183	59.307249	368.25	1869.27
7	GUIDE	525735976	8.84	25332	0.044	0.064	0.081	0.133	350.142956	58.277622	-1941.91	-1166.79

2.4 Star Slots

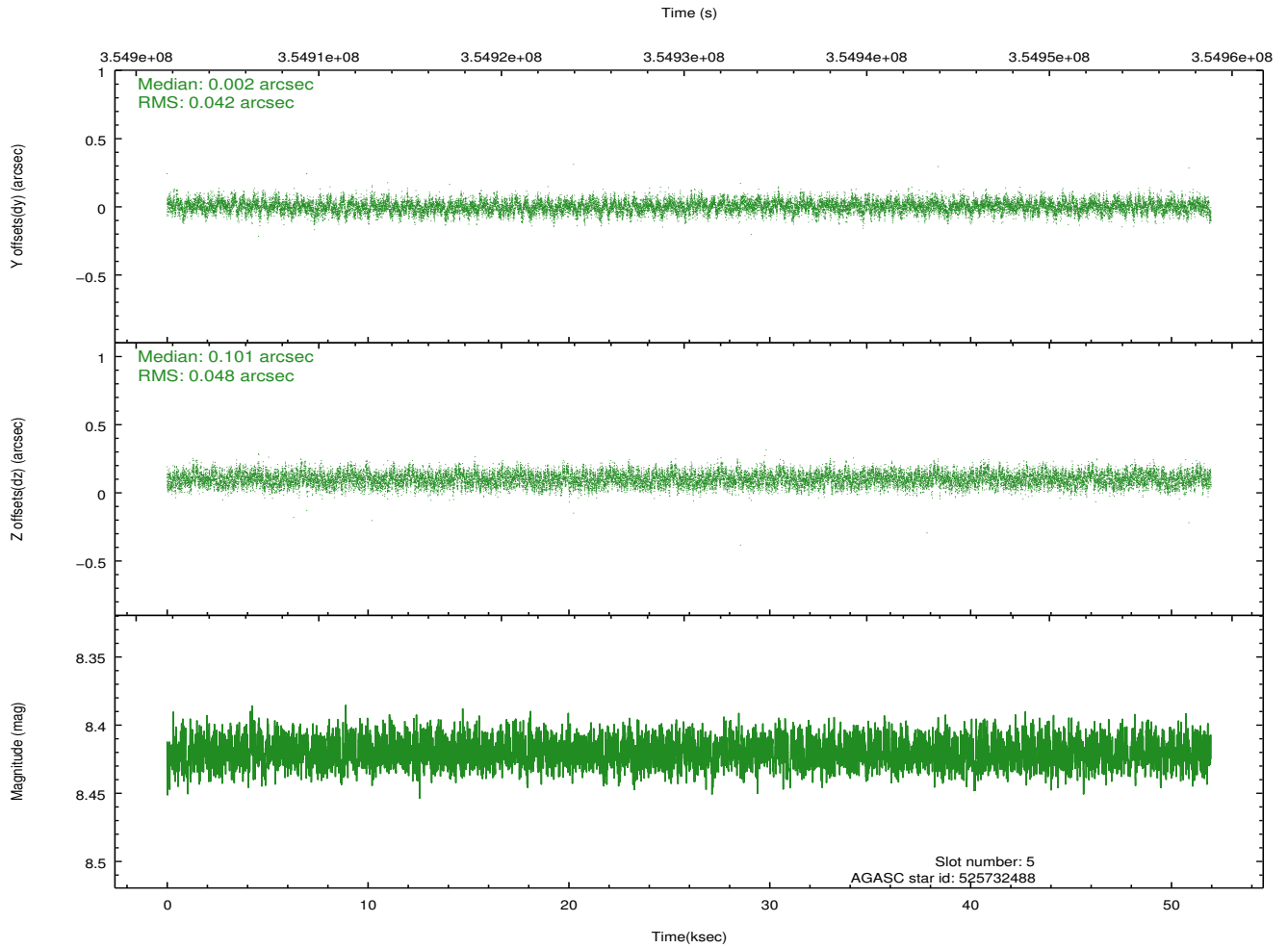
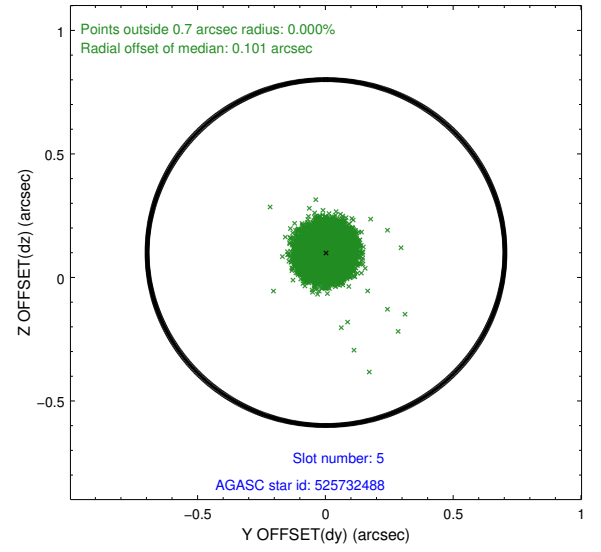
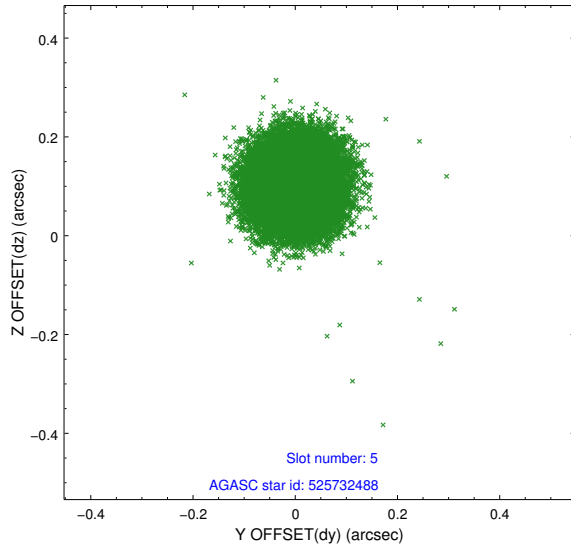
2.4.1 Slot 3



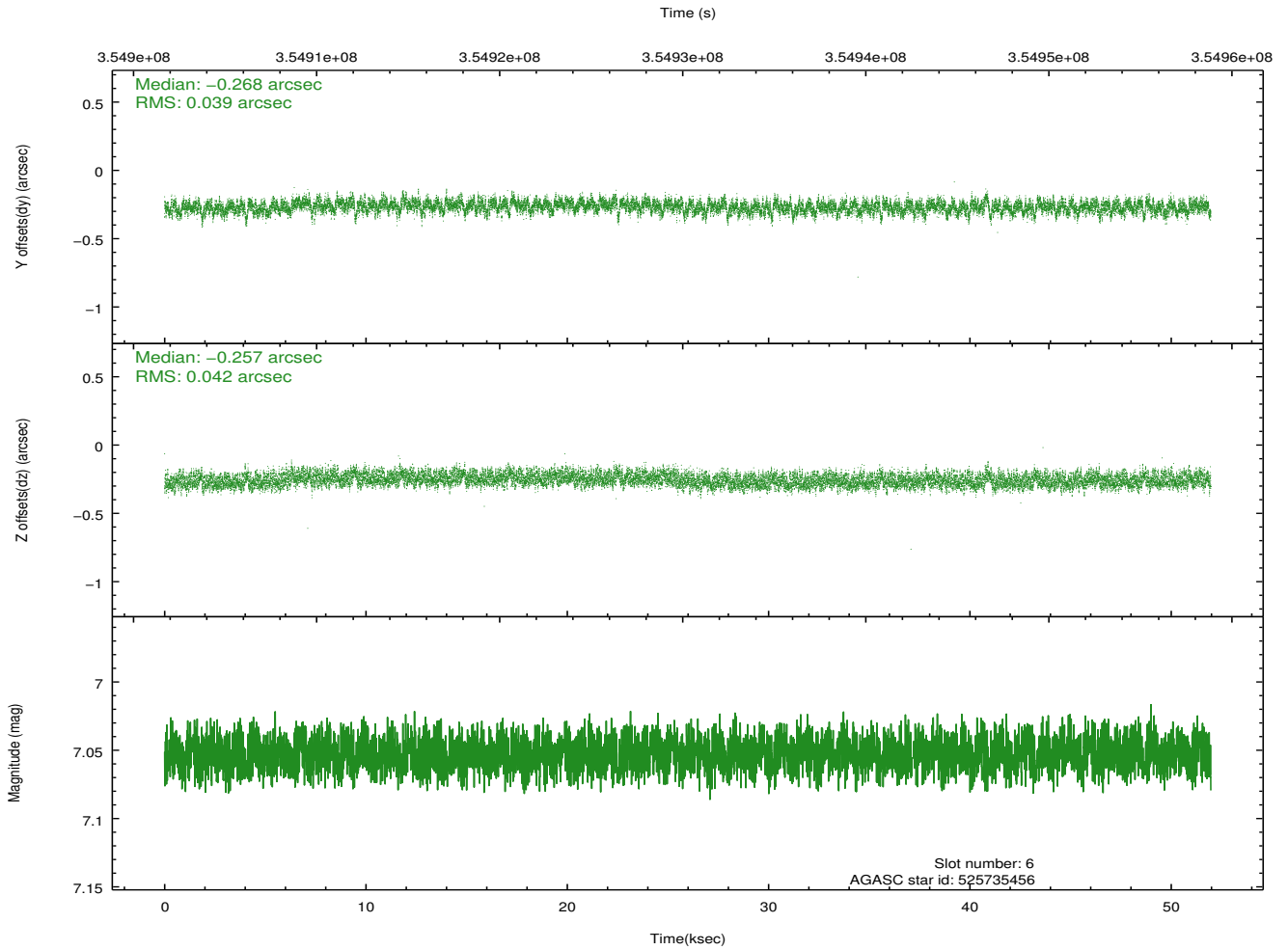
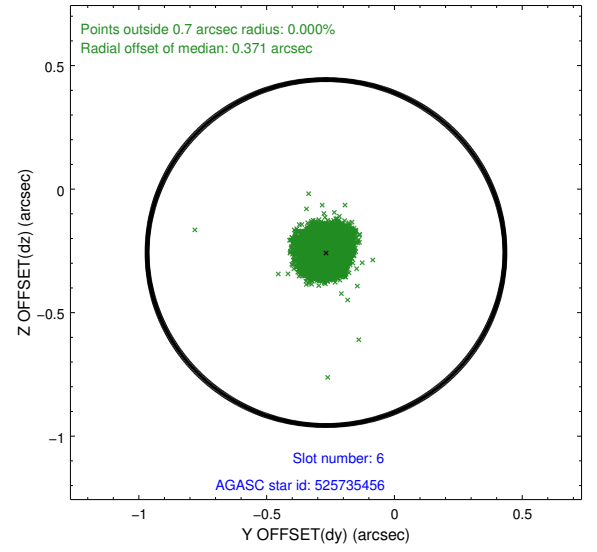
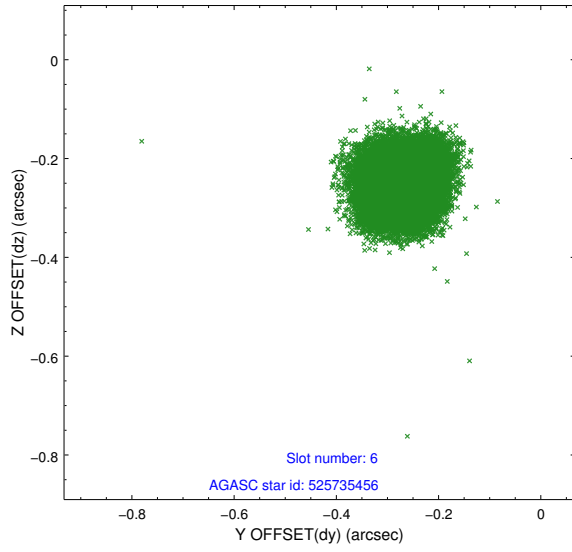
2.4.2 Slot 4



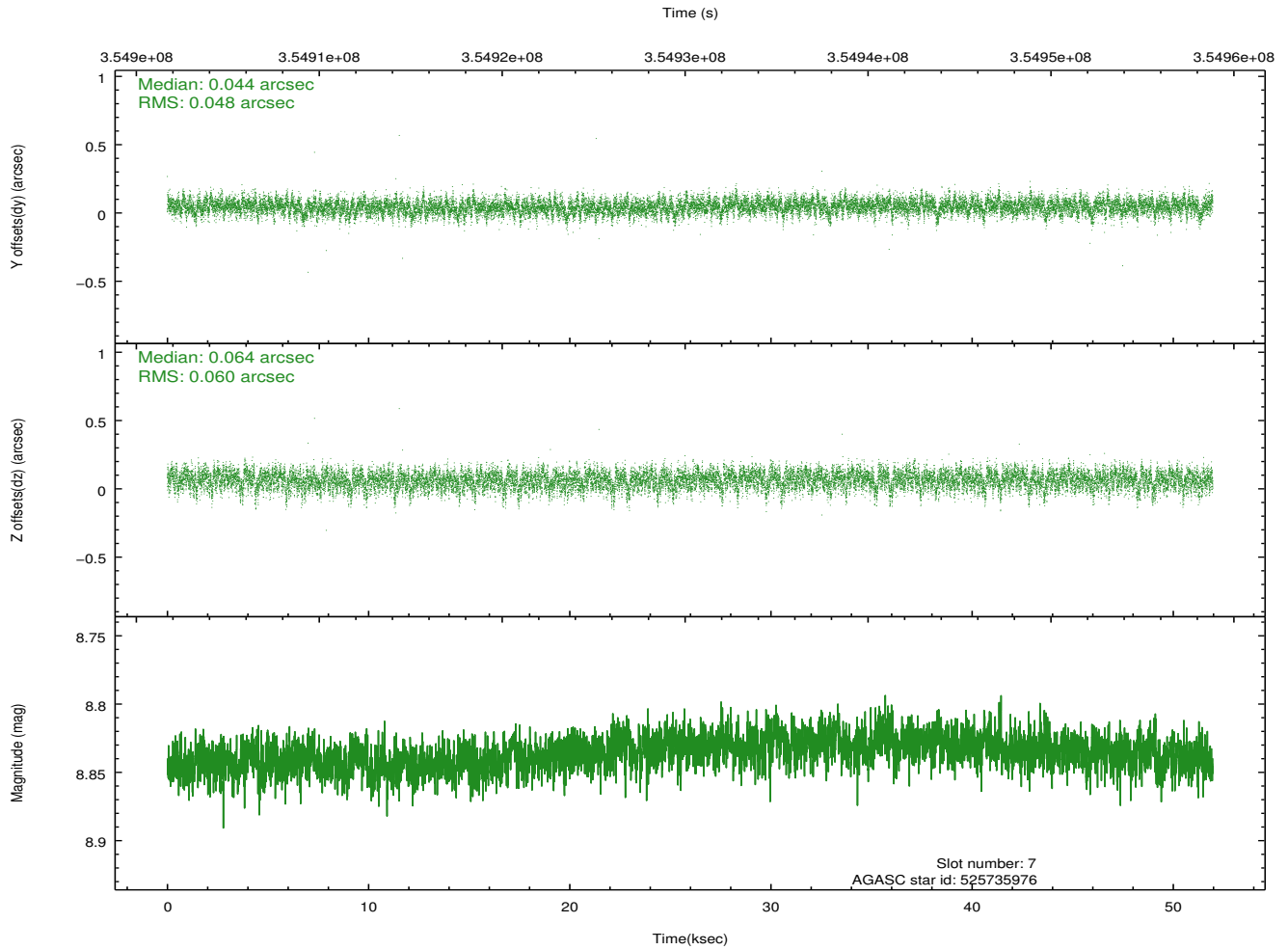
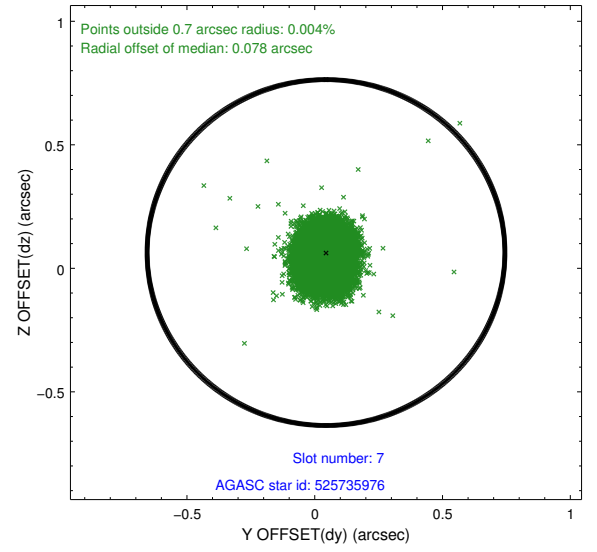
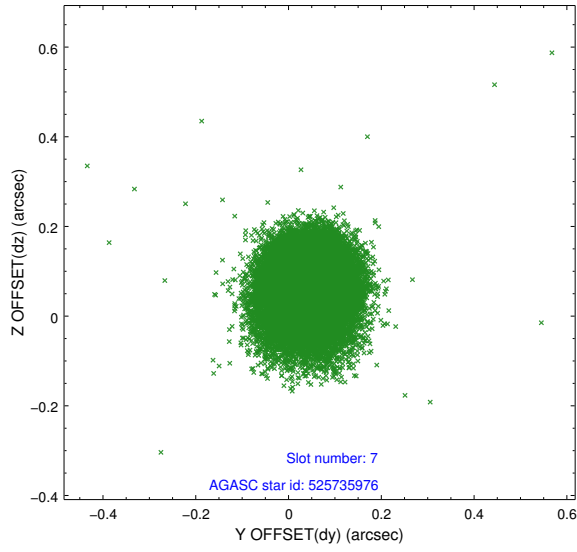
2.4.3 Slot 5



2.4.4 Slot 6

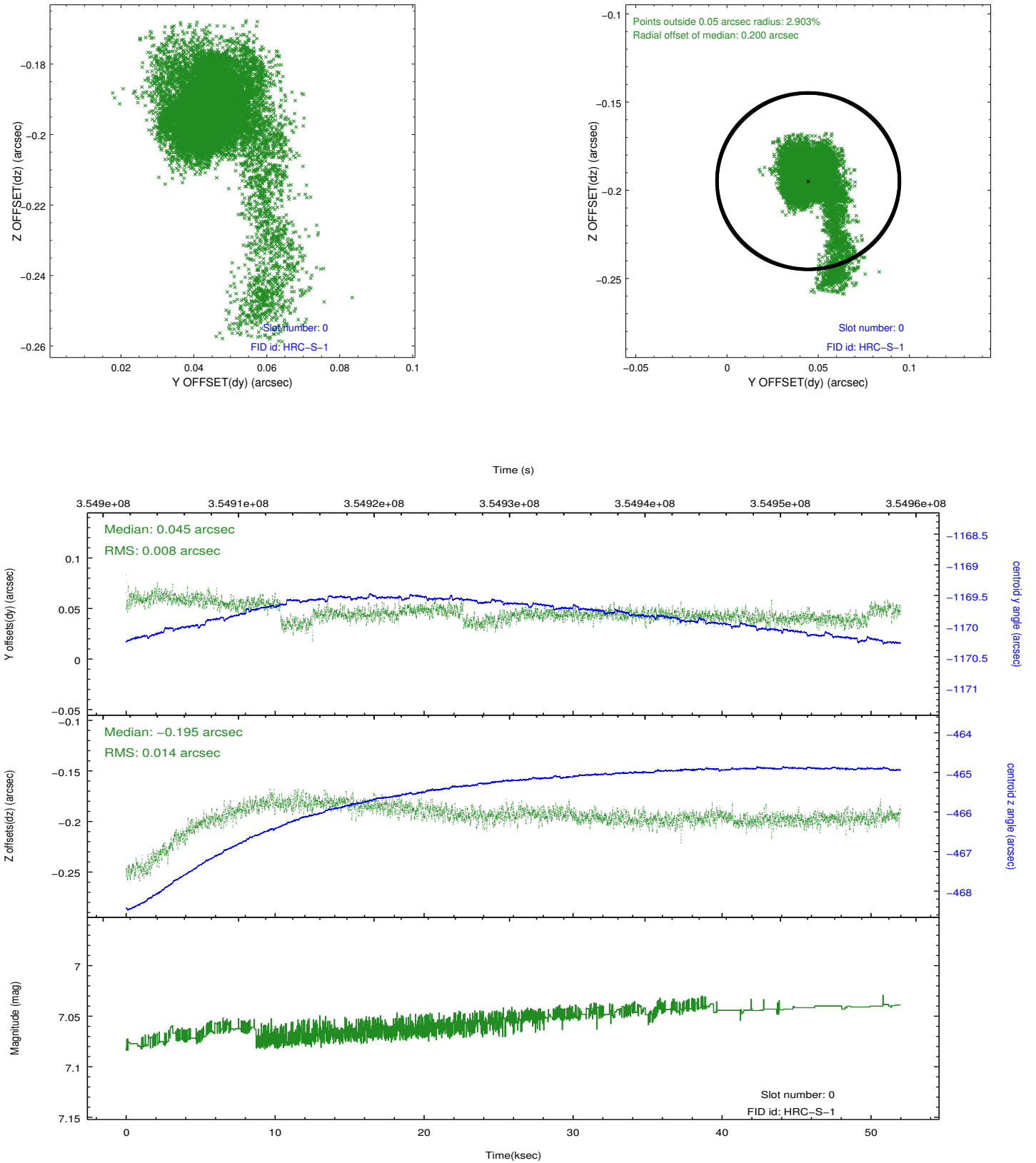


2.4.5 Slot 7

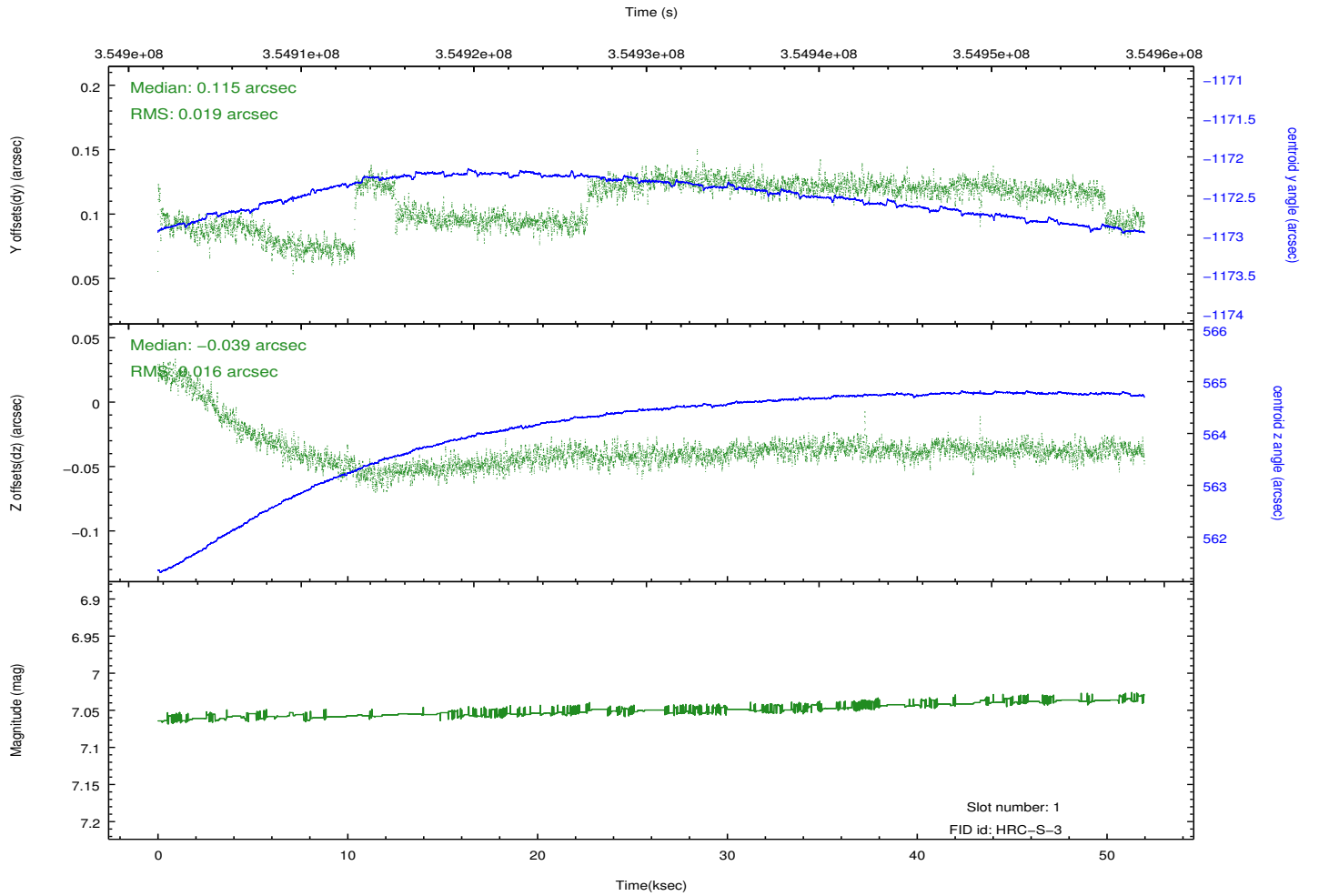
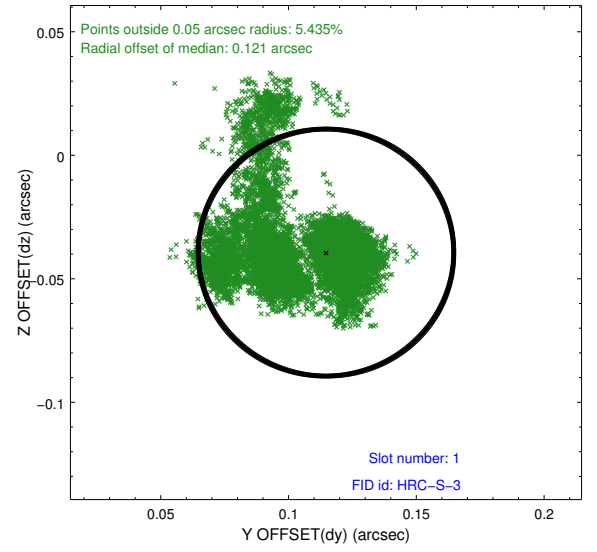
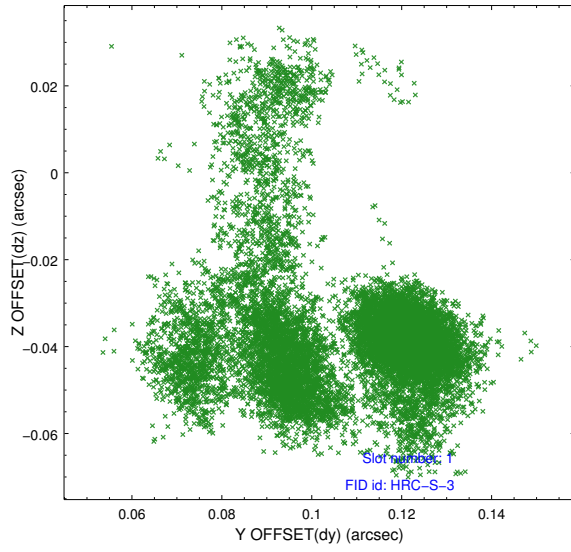


2.5 FID Slots

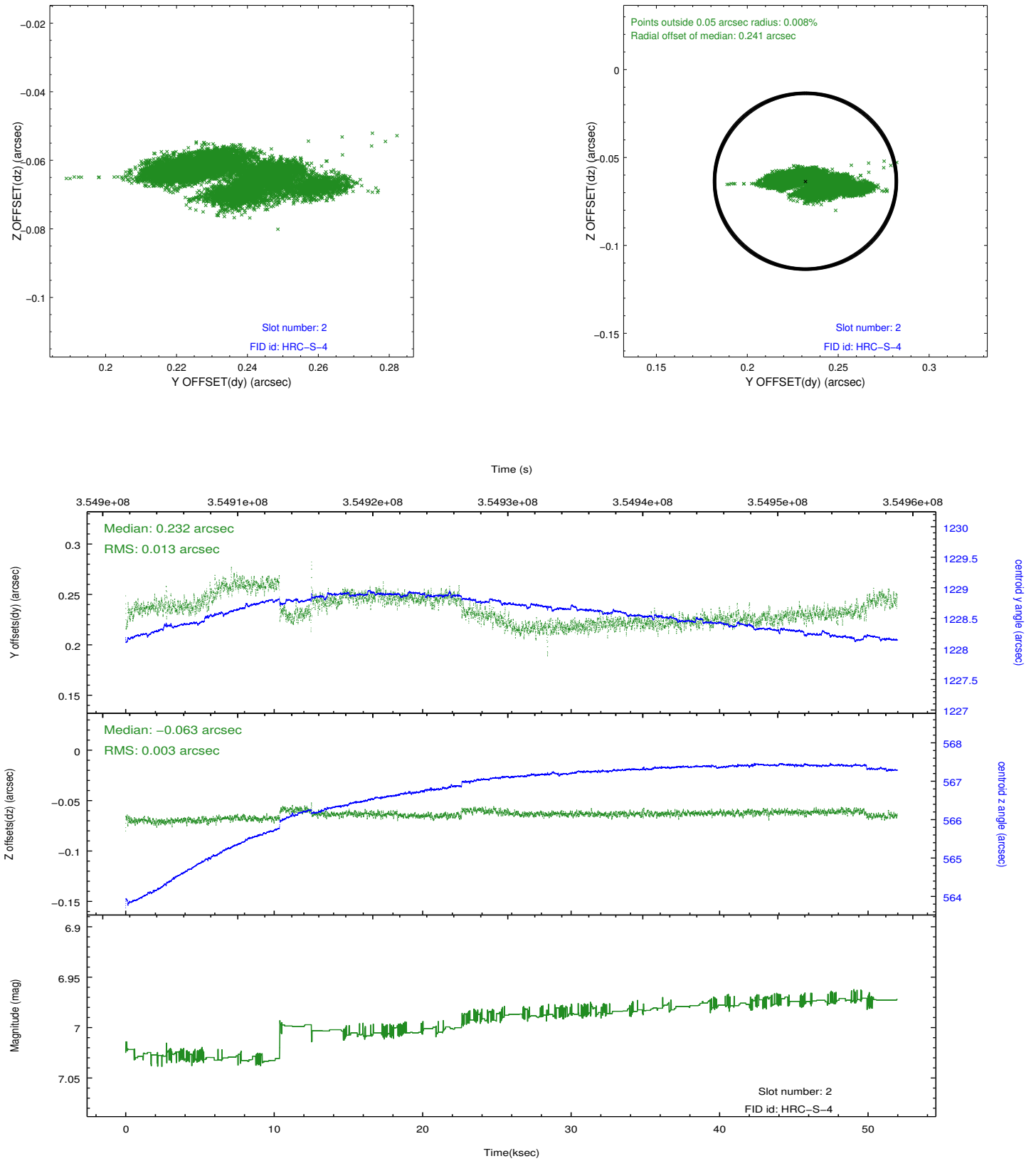
2.5.1 Slot 0



2.5.2 Slot 1



2.5.3 Slot 2



A Summary

A.1 Status

V&V Scientist	Beth Sundheim
V&V Date (YYYY-MM-DD)	2013.07.01
V&V Edition	1
V&V Disposition and Status	OK
V&V Charge Time	51.9695526

A.2 Comments