

# V&V Reference Report

## L2 ASCDS Version : 8.4.5

Observation 1048 - L2 Version 3  
Chandra X-Ray Center

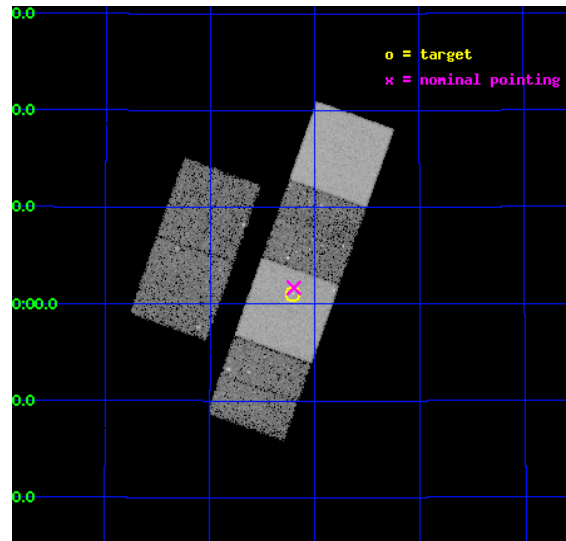
L2 Processing Date : Sep 11 2012

## Contents

<b>1</b>	<b>Front</b>	<b>2</b>
<b>2</b>	<b>OBI</b>	<b>3</b>
2.1	OBI . . . . .	3
2.1.1	Images . . . . .	3
2.1.2	Bias . . . . .	3
2.1.3	Parameters . . . . .	4
2.1.4	Events . . . . .	4
2.2	Compared Parameters . . . . .	5
2.3	Aspect . . . . .	6
2.4	Star Slots . . . . .	9
2.4.1	Slot 3 . . . . .	9
2.4.2	Slot 4 . . . . .	10
2.4.3	Slot 5 . . . . .	11
2.4.4	Slot 6 . . . . .	12
2.4.5	Slot 7 . . . . .	13
2.5	FID Slots . . . . .	14
2.5.1	Slot 0 . . . . .	14
2.5.2	Slot 1 . . . . .	15
2.5.3	Slot 2 . . . . .	16
<b>A</b>	<b>Summary</b>	<b>17</b>
A.1	Status . . . . .	17
A.2	Comments . . . . .	17

# 1 Front

seq_num	500114	Sequence number
obs_id	1048	Observation id
title	GAMMA-RAY BURSTS: DISCOVERING THE PROGENITORS AND UNDERSTANDING THE EXPLOSION	Proposal title
observer	Prof. Shrinivas Kulkarni	Principal investigator
object	GRB 010222	Source name
dtcycle	0	&#160
cycle	P	events from which exps? Prim/Second/Both
ra_targ	223.0525	Observer's specified target RA [deg]
dec_targ	43.018417	Observer's specified target Dec [deg]
ra_nom	223.05028315267	Nominal RA [deg]
dec_nom	43.028108780996	Nominal Dec [deg]
roll_nom	109.61138133886	Nominal Roll [deg]
revision	3	Processing version of data
ontime	17904.000016659	Sum of GTIs [s]
livetime	17677.288787954	Livetime [s]
ontime2	17900.759056419	Sum of GTIs [s]
ontime3	17904.000016659	Sum of GTIs [s]
ontime5	17904.000016659	Sum of GTIs [s]
ontime6	17904.000016659	Sum of GTIs [s]
ontime7	17904.000016659	Sum of GTIs [s]
ontime8	17903.994085163	Sum of GTIs [s]
l2events	172555	Number of level 2 events

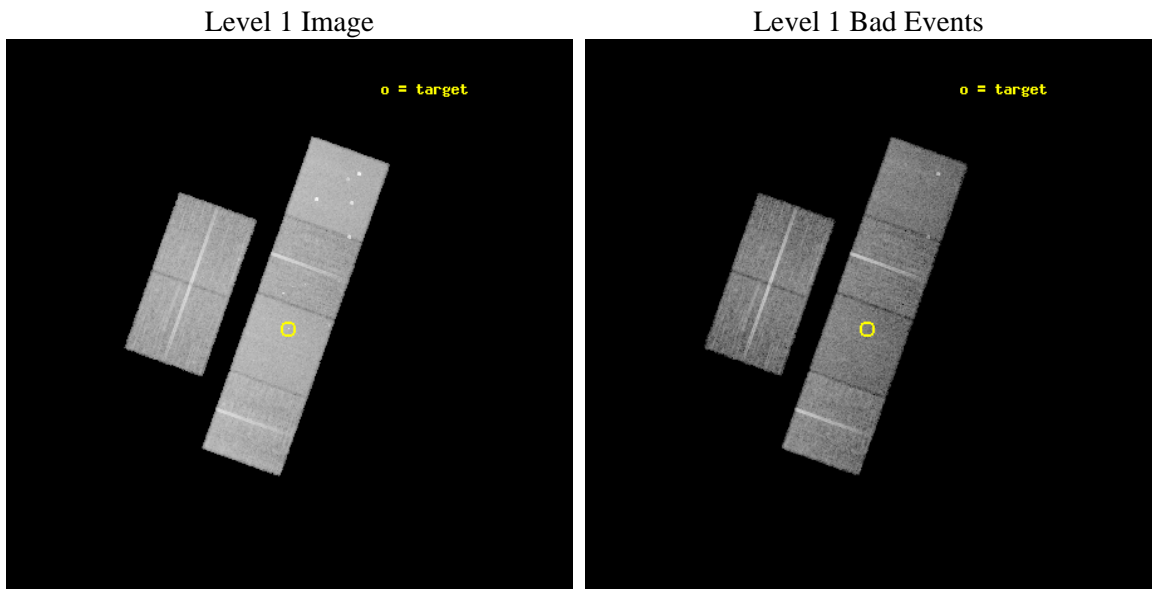




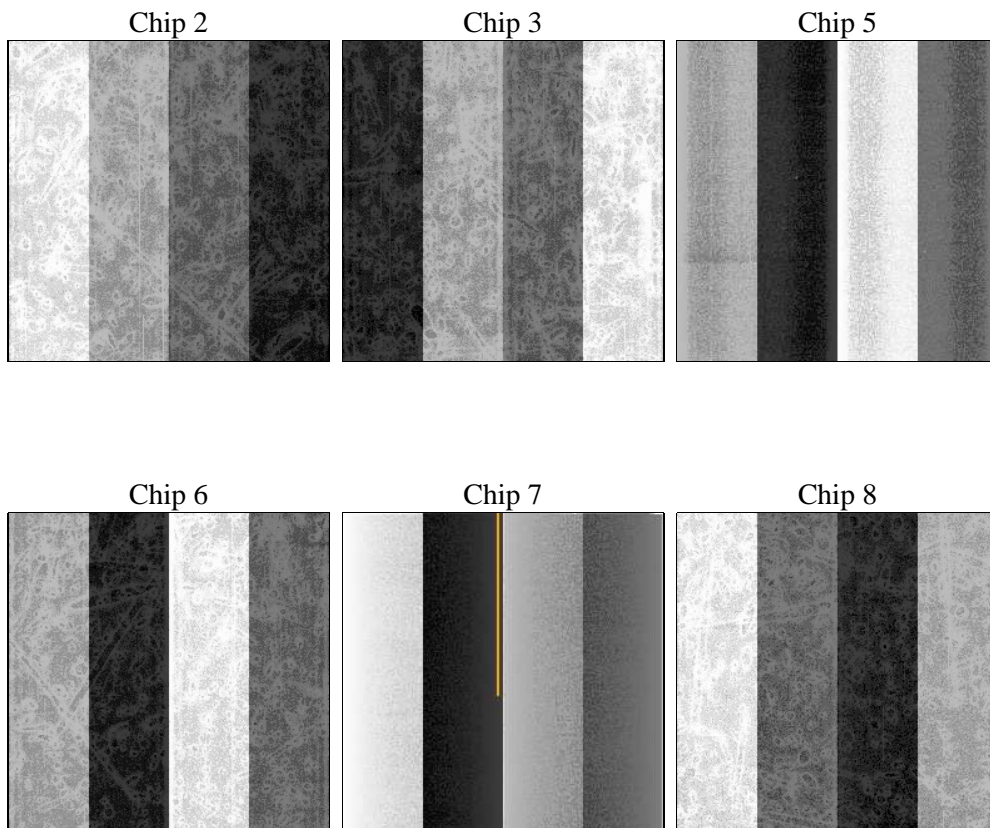
## 2 OBI

### 2.1 OBI

#### 2.1.1 Images



#### 2.1.2 Bias



### 2.1.3 Parameters

obi_num	0	Obi number	sched_exp_time	18000.000000	[s] Scheduled observation exposure time
ascdsver	8.4.5	Processing system revision	ontime	17904.000016659	Sum of GTIs [s]
caldsver	4.5.1.1	&#160	ontime2	17900.759056419	Sum of GTIs [s]
date	2012-09-11T23:56:52	Date and time of file creation	ontime3	17904.000016659	Sum of GTIs [s]
revision	3	Processing version of data	ontime5	17904.000016659	Sum of GTIs [s]
			ontime6	17904.000016659	Sum of GTIs [s]
			ontime7	17904.000016659	Sum of GTIs [s]
			ontime8	17903.994085163	Sum of GTIs [s]
			l1events	801229	Number of level 1 events

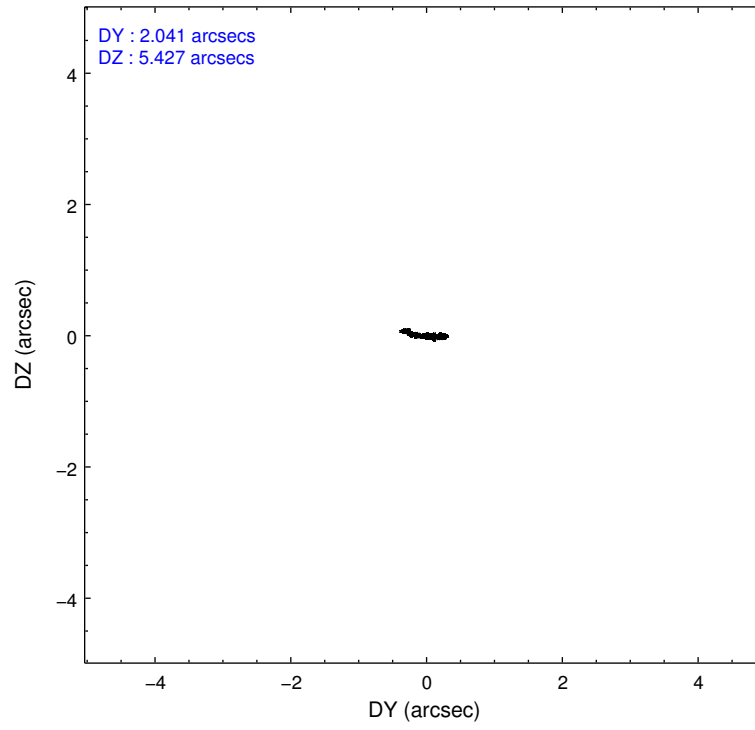
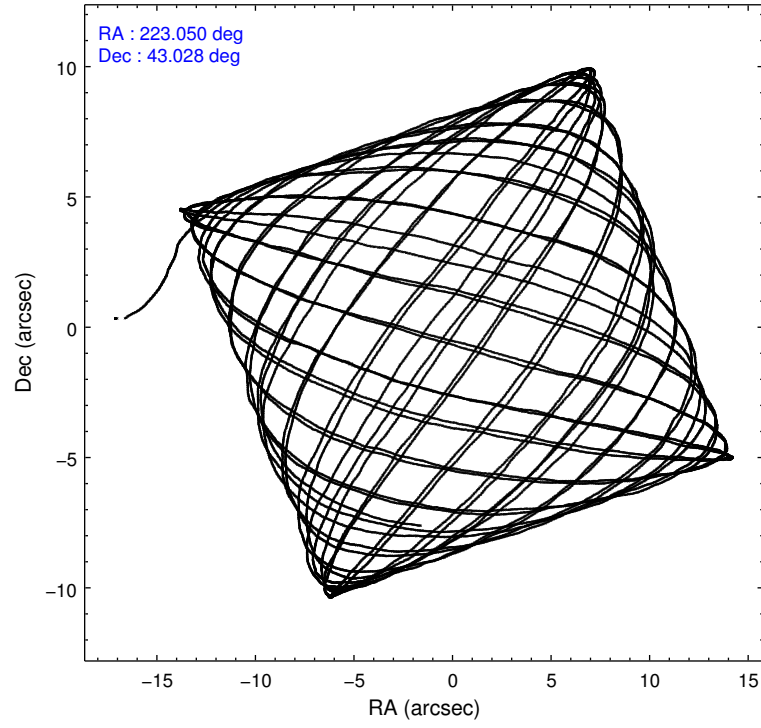
### 2.1.4 Events

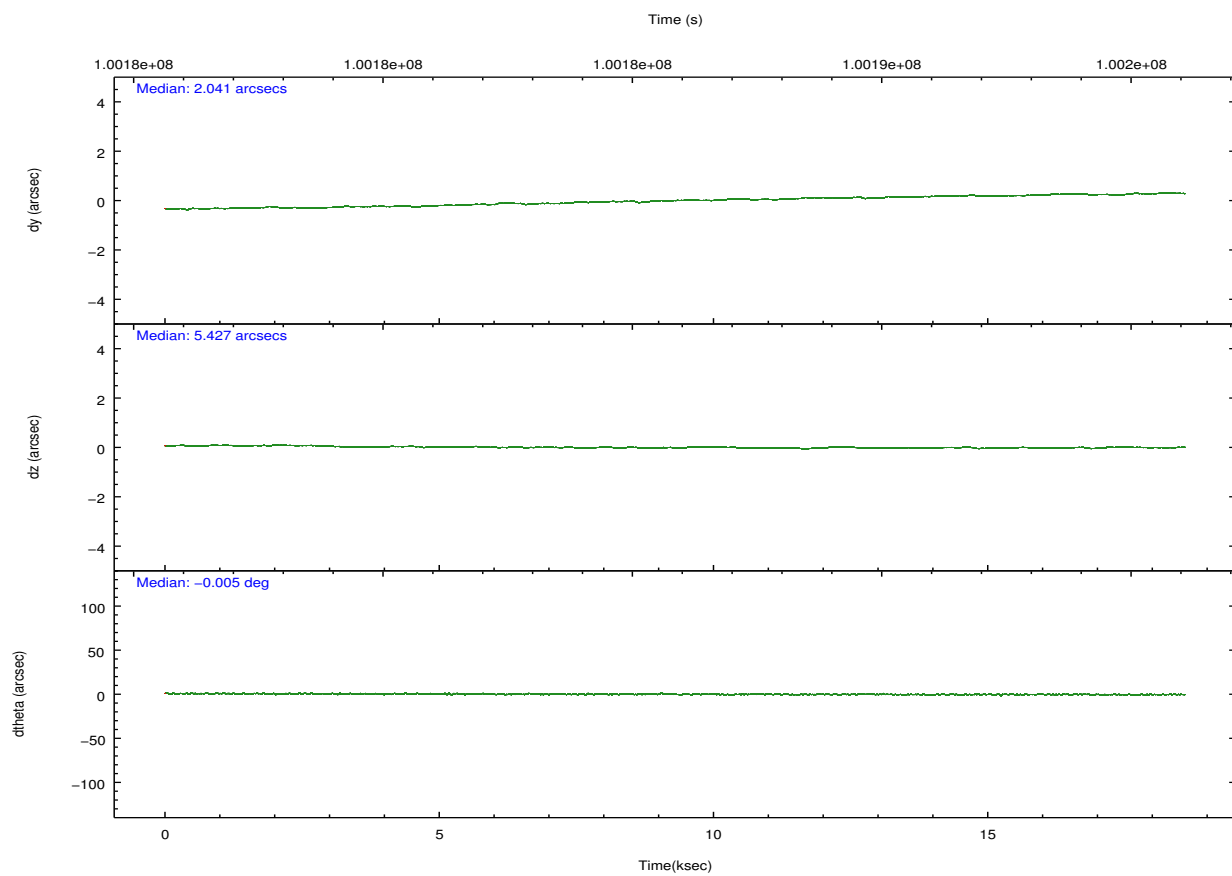
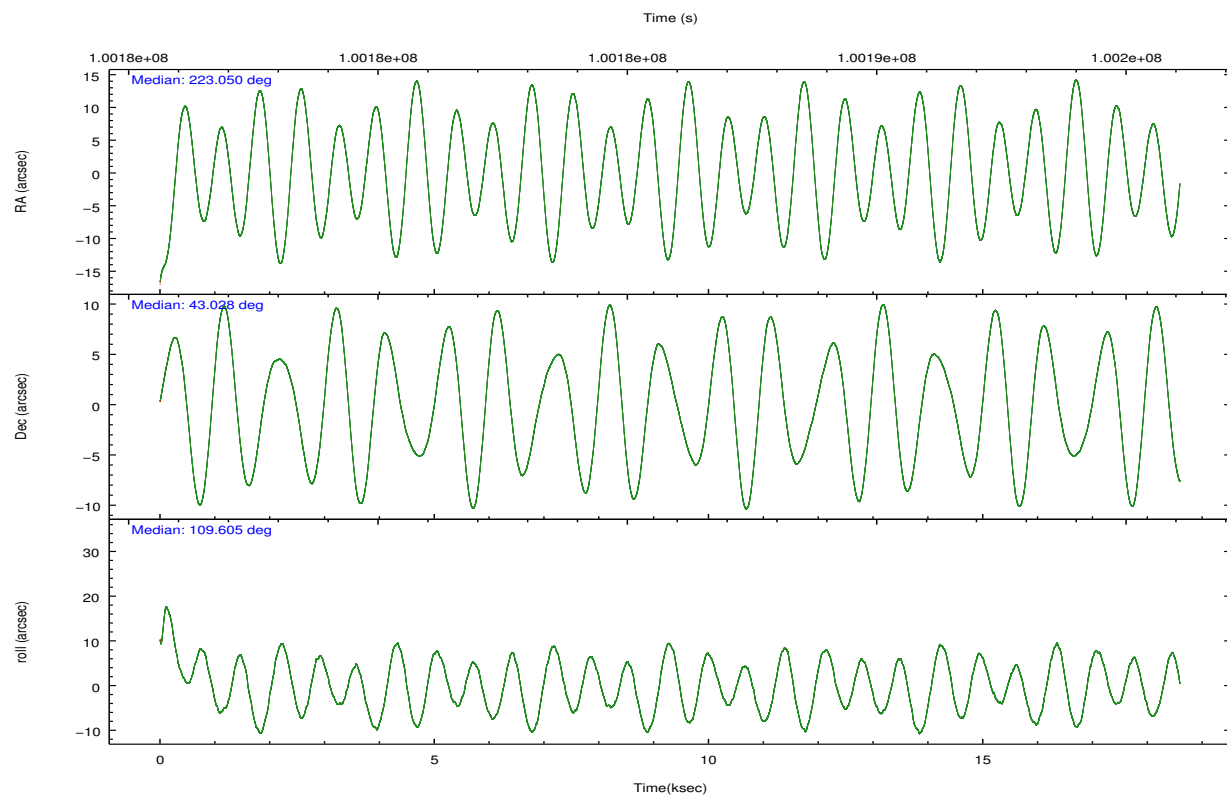
	ccd 2	ccd 3	ccd 5	ccd 6	ccd 7	ccd 8		ccd 2	ccd 3	ccd 5	ccd 6	ccd 7	ccd 8
level 1 events	118767	112224	163855	114963	146827	144593	grade 0 events	5320	5326	10831	5980	5742	8801
rejected events	105952	99768	88067	101063	86570	115990		4%	4%	6%	5%	3%	6%
rejected %	89%	88%	53%	87%	58%	80%	grade 1 events	56	49	654	50	147	74
								0%	0%	0%	0%	0%	0%
							grade 2 events	2844	2420	21270	2685	11832	6155
								2%	2%	12%	2%	8%	4%
							grade 3 events	1183	1239	3009	1363	5463	3030
								0%	1%	1%	1%	3%	2%
							grade 4 events	1228	1243	2868	1301	5360	2844
								1%	1%	1%	1%	3%	1%
							grade 5 events	4050	4263	12252	4841	14048	5994
								3%	3%	7%	4%	9%	4%
							grade 6 events	2247	2231	37833	2573	31874	7780
								1%	1%	23%	2%	21%	5%
							grade 7 events	101839	95453	75138	96170	72361	109915
								85%	85%	45%	83%	49%	76%

## 2.2 Compared Parameters

Parameter	Planned	Actual	Parameter	Planned	Actual
Instrument	ACIS	ACIS	Obspar format version number	7	7
Detector	ACIS-235678	ACIS-235678	Obspar file type	PREDICTED	ACTUAL
Grating	NONE	NONE	Obspar update status	NONE	UPDATED
Data mode	FAINT	FAINT	Number of optional ACIS chips dropped	0	0
Observation mode	POINTING	POINTING	On-chip summing requested	N	N
[deg] Pointing RA	223.079009	223.0502831526716	Subarray requested	NONE	NONE
[deg] Pointing Dec	43.010587	43.02810878099619	Alternating exposures requested	N	N
[deg] Pointing Roll	109.435161	109.6113813388612	[s] Primary exposure time	0.000000	3.2
[mm] SIM focus pos	-0.684267	-0.6828225247311905			
[mm] SIM defocus	0	0.001444936568705701			
[mm] SIM translation stage pos	-190.132523	-190.1425803651734			
[mm] SIM translation stage offset	0	0.01005778216563158			
[s] Observation start time (MET)	100177155.184000	100175995.87474			
Observation start date	2001-03-05T10:58:11	2001-03-05T10:39:55			
[s] Observation end time (MET)	100195155.184000	100195684.58801			
Observation end date	2001-03-05T15:58:11	2001-03-05T16:08:04			
Read mode	TIMED	TIMED			

## 2.3 Aspect



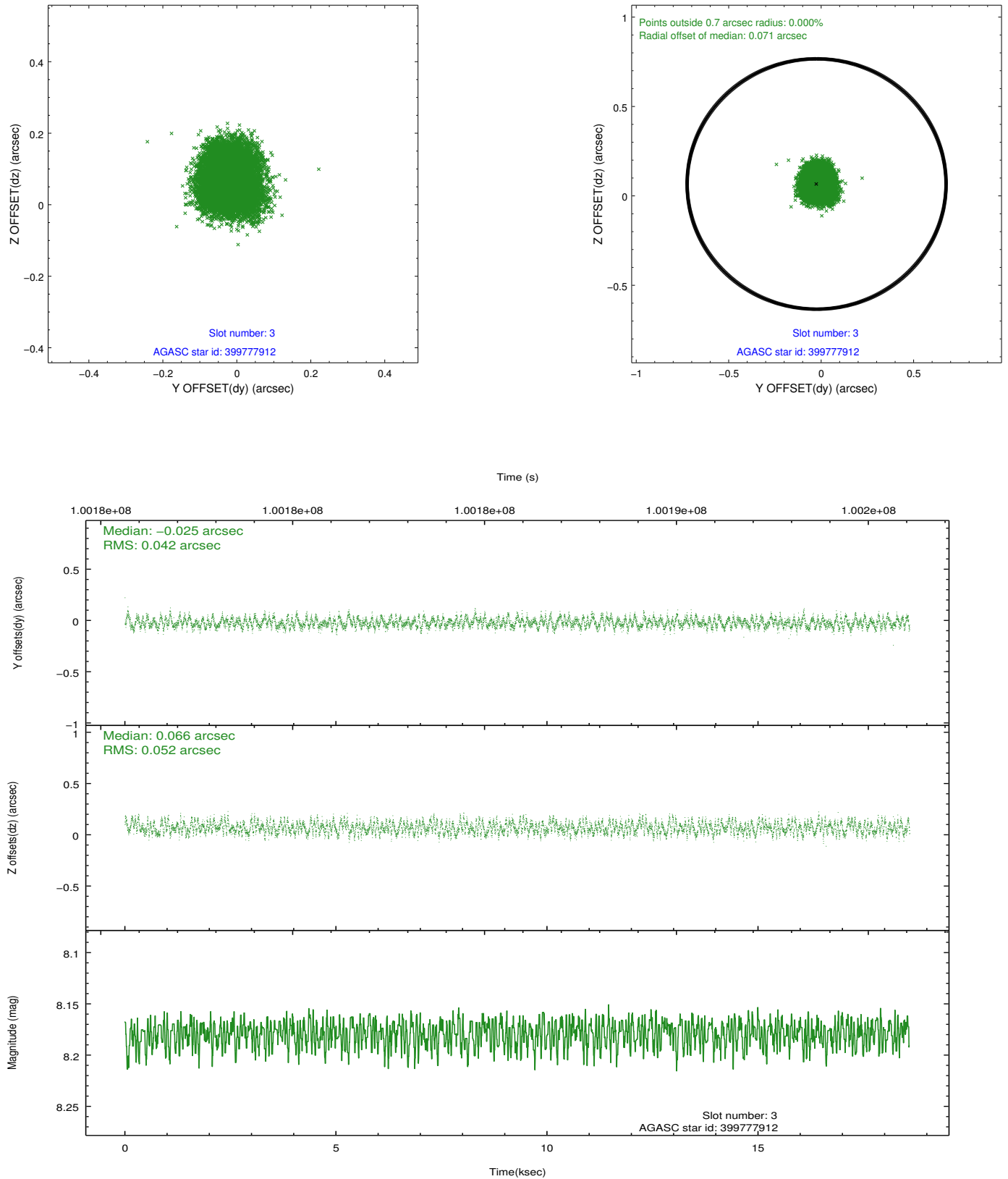


### Slot Statistics

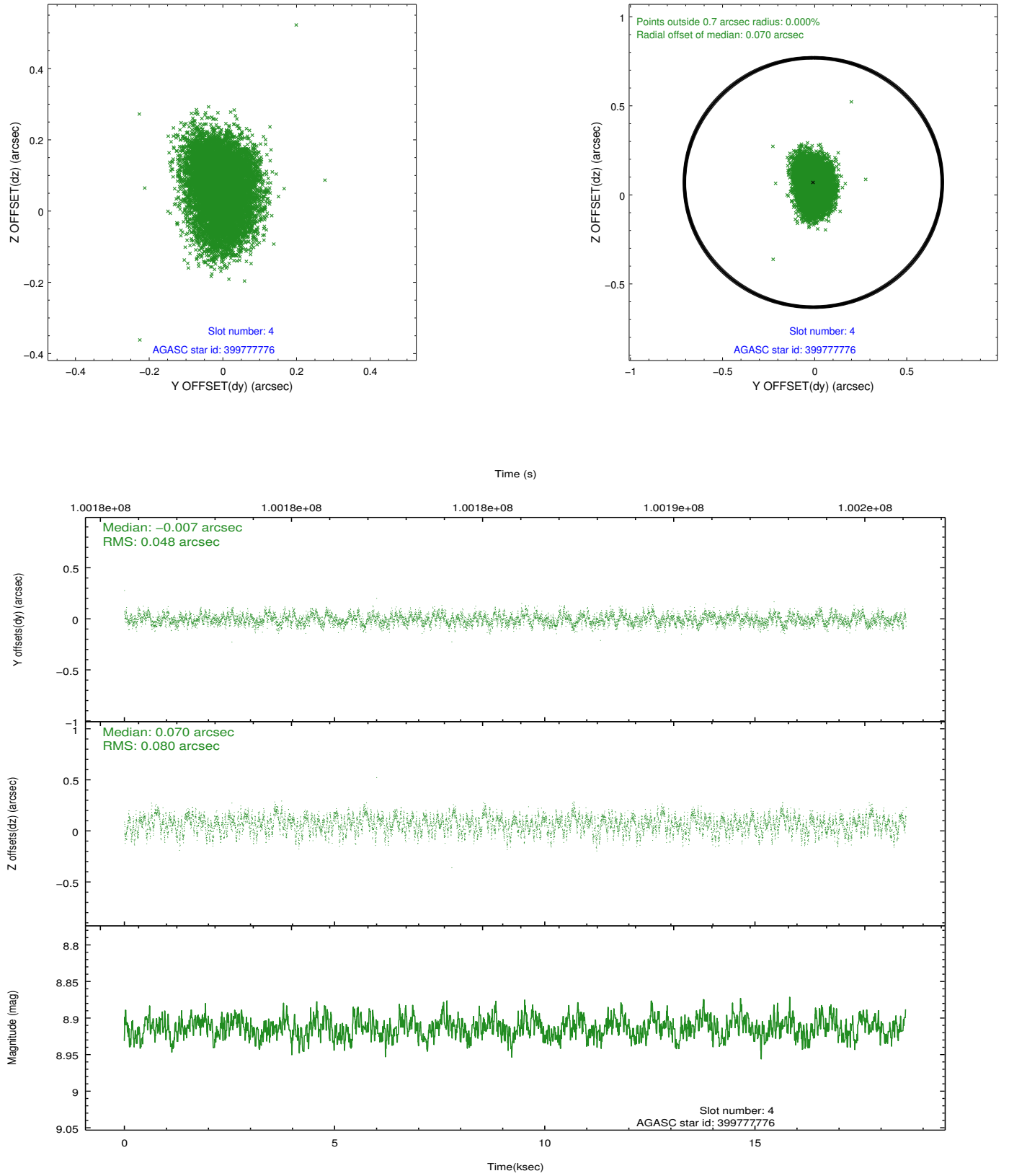
slot	status	id	mag	n_pts	med_dy	med_dz	dr1	dr2	ra	dec	mean_y	mean_z
0	FID	ACIS-S-2	7.12	4534	-0.042	-0.006	0.007	0.011	0.000000	0.000000	-754.63	-1726.53
1	FID	ACIS-S-4	7.20	4535	-0.022	0.022	0.006	0.010	0.000000	0.000000	2158.52	181.83
2	FID	ACIS-S-5	7.24	4535	0.032	-0.007	0.007	0.011	0.000000	0.000000	-1807.17	175.62
3	GUIDE	399777912	8.18	9070	-0.025	0.066	0.073	0.111	224.004611	42.792463	-1541.26	-2049.52
4	GUIDE	399777776	8.91	9068	-0.007	0.070	0.099	0.161	223.999033	42.858412	-1311.94	-2112.36
5	GUIDE	399642384	9.69	9066	0.021	-0.078	0.084	0.137	222.533684	42.728698	-473.05	1695.31
6	GUIDE	399647344	9.54	9060	-0.040	0.094	0.098	0.156	223.296429	43.683105	2095.47	-1339.56
7	GUIDE	399250512	10.23	9063	0.047	-0.152	0.130	0.204	222.480665	42.463397	-1323.60	2151.28

## 2.4 Star Slots

### 2.4.1 Slot 3

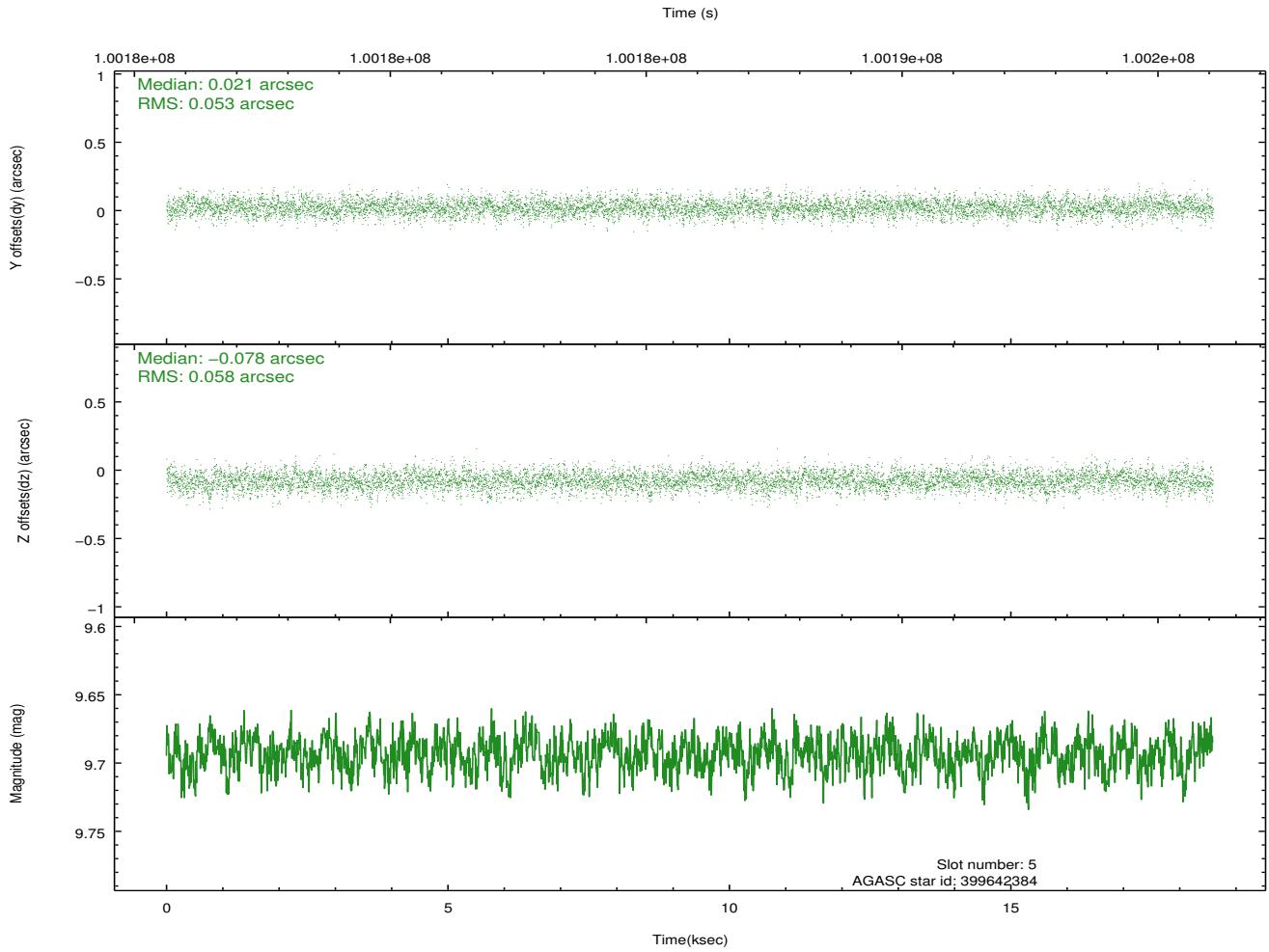
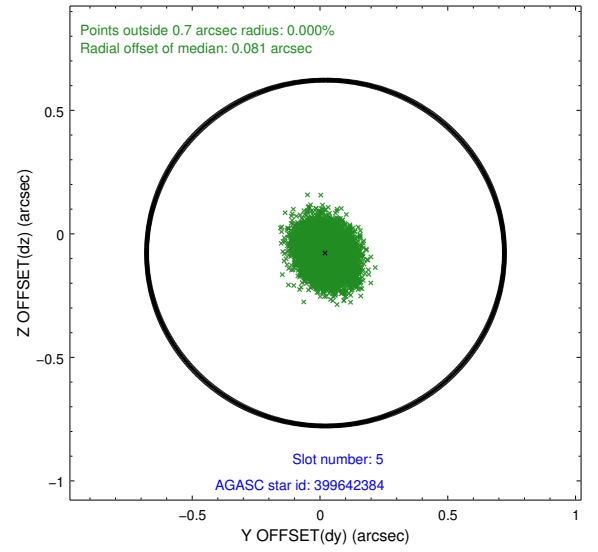
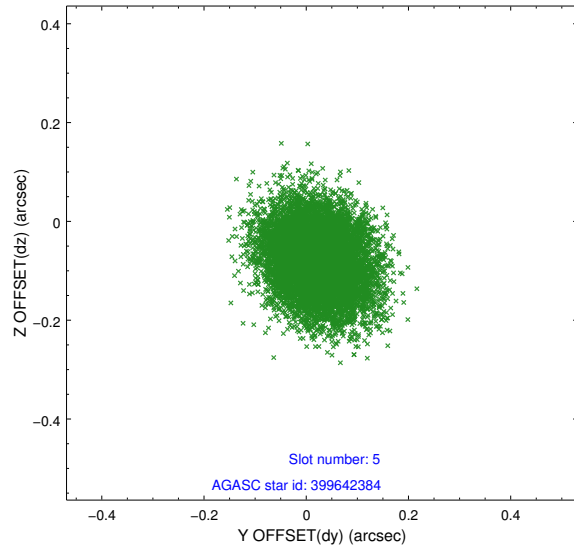


## 2.4.2 Slot 4

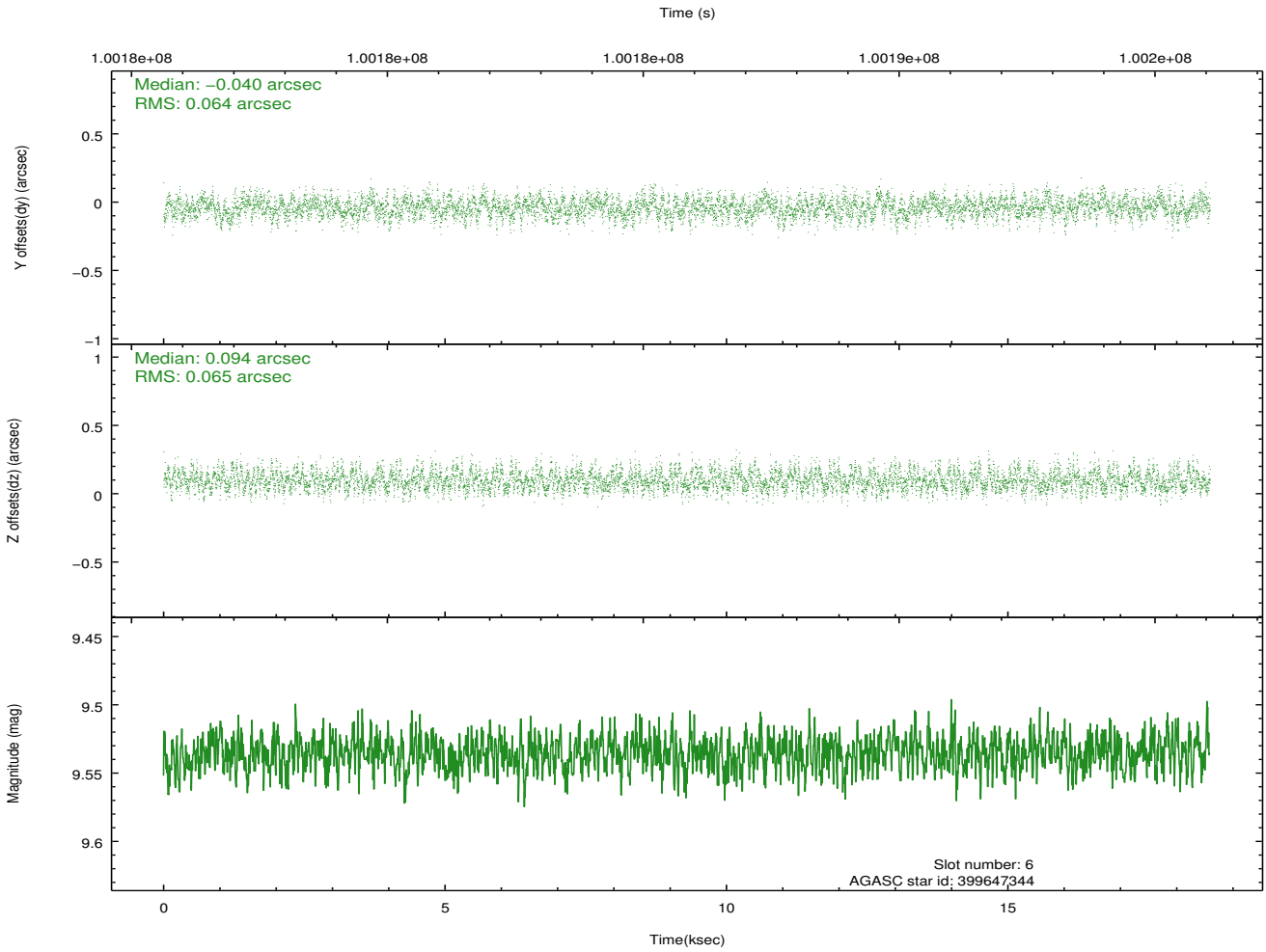
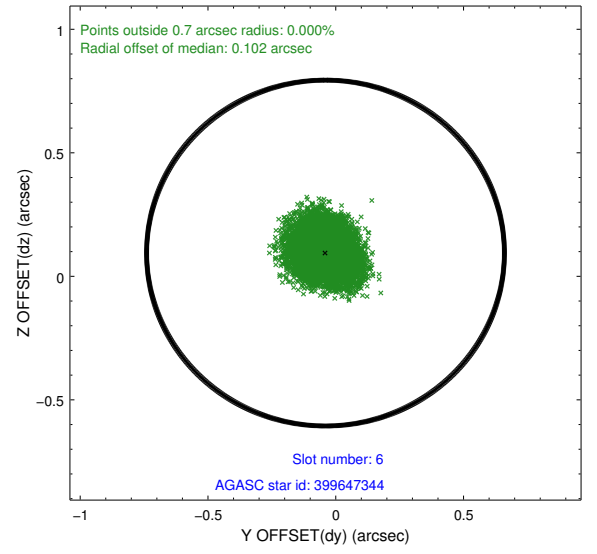
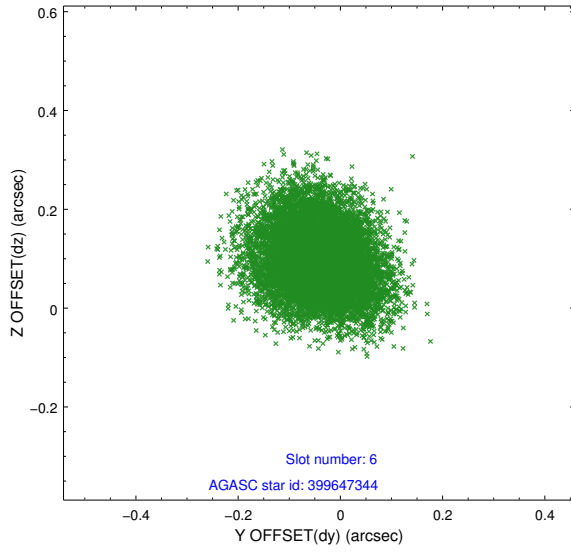




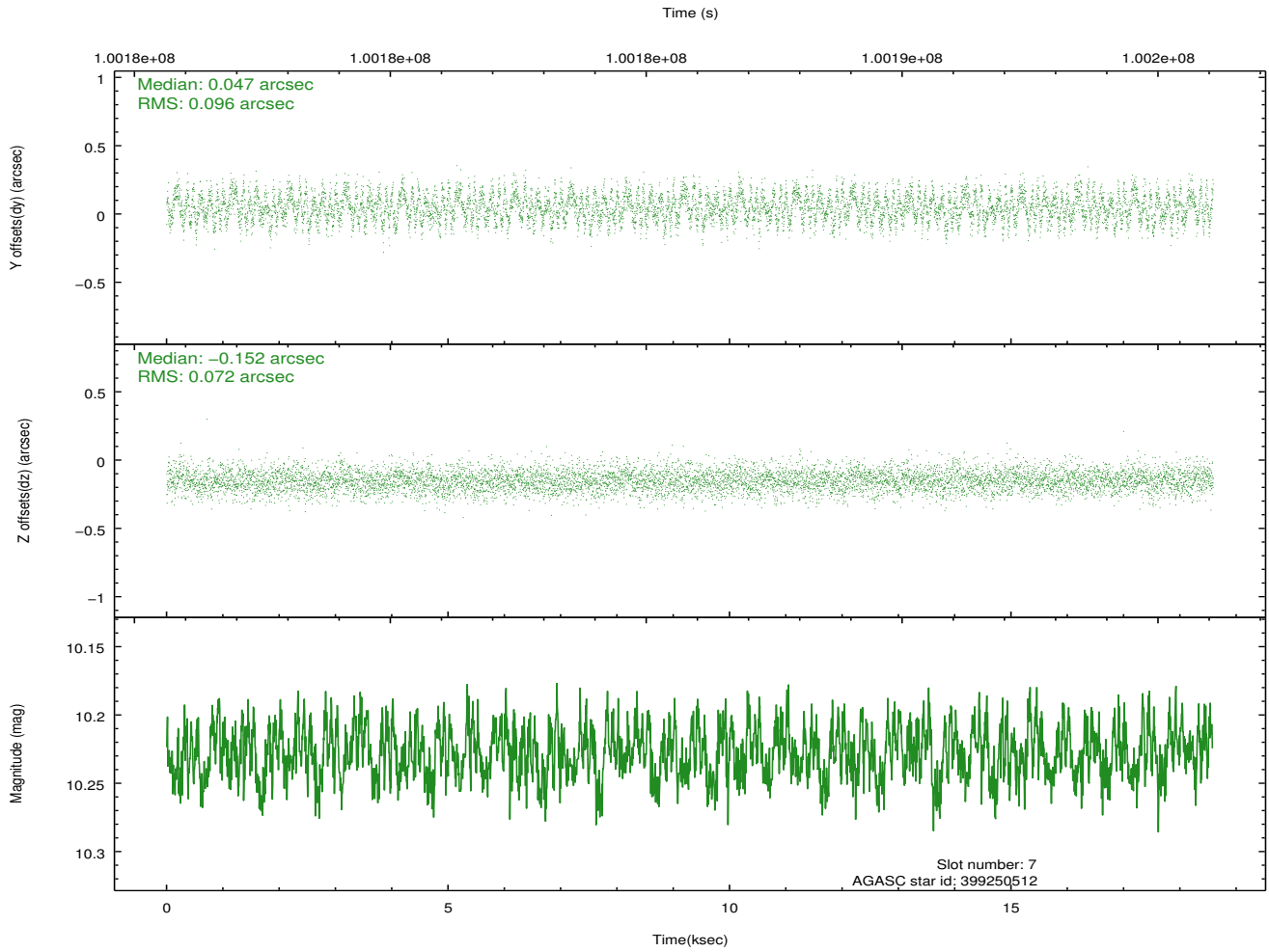
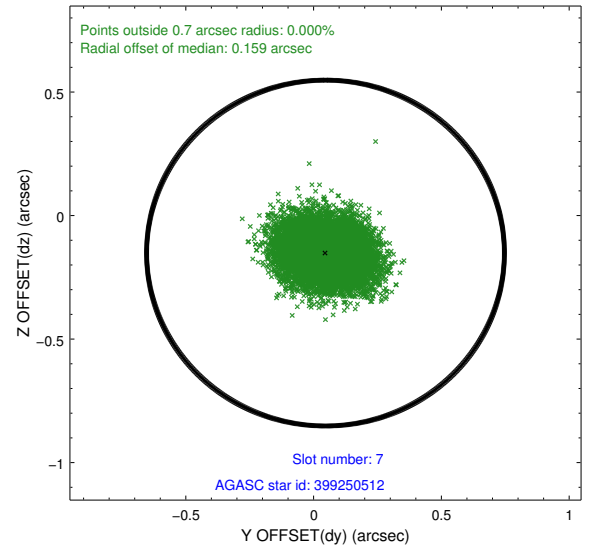
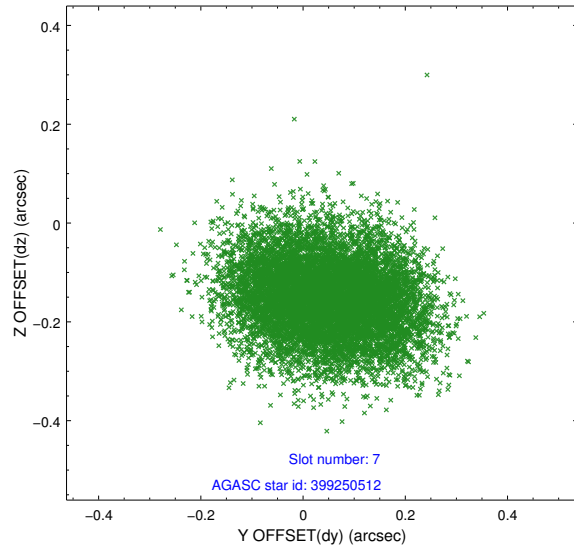
### 2.4.3 Slot 5



## 2.4.4 Slot 6

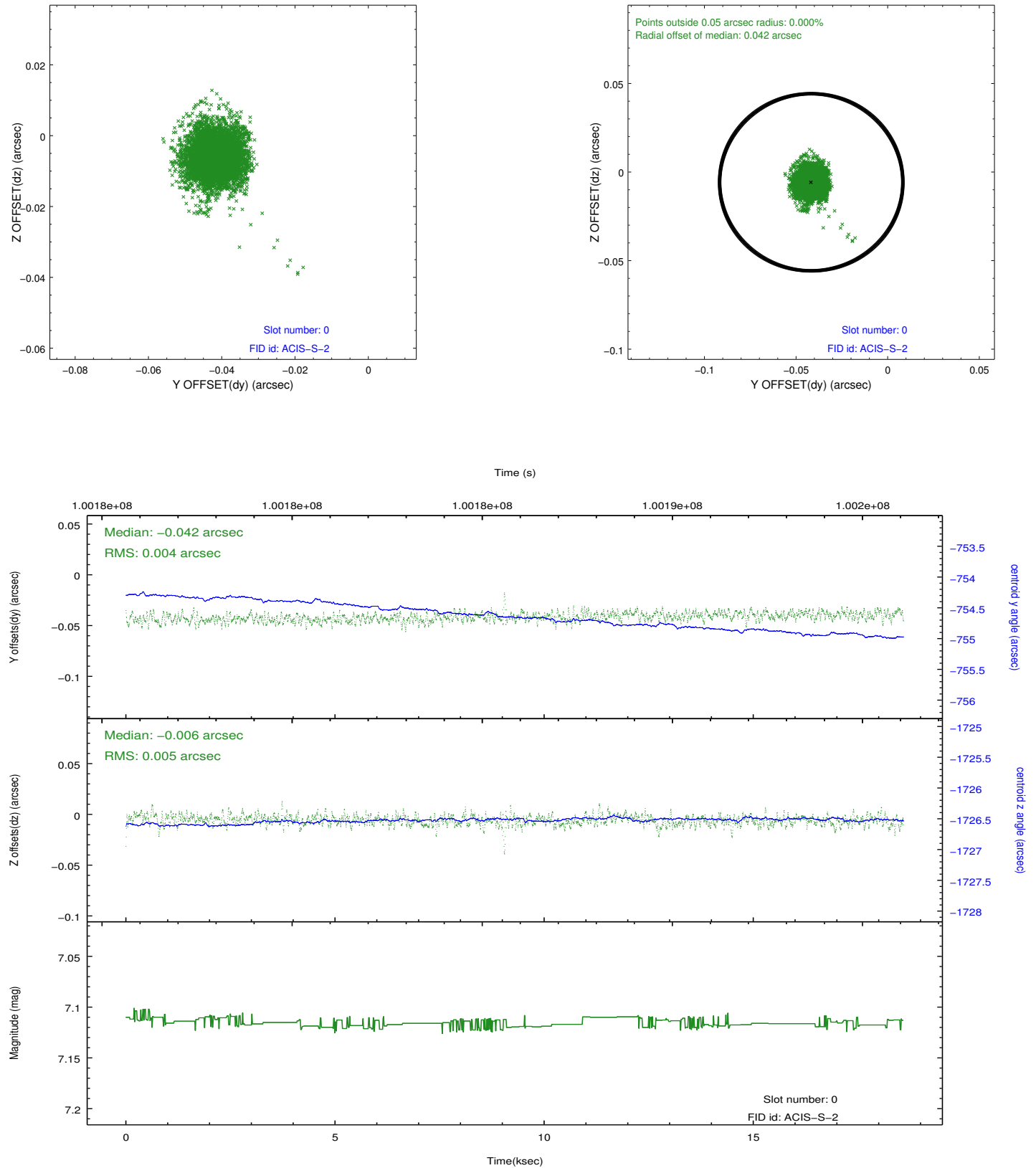


## 2.4.5 Slot 7

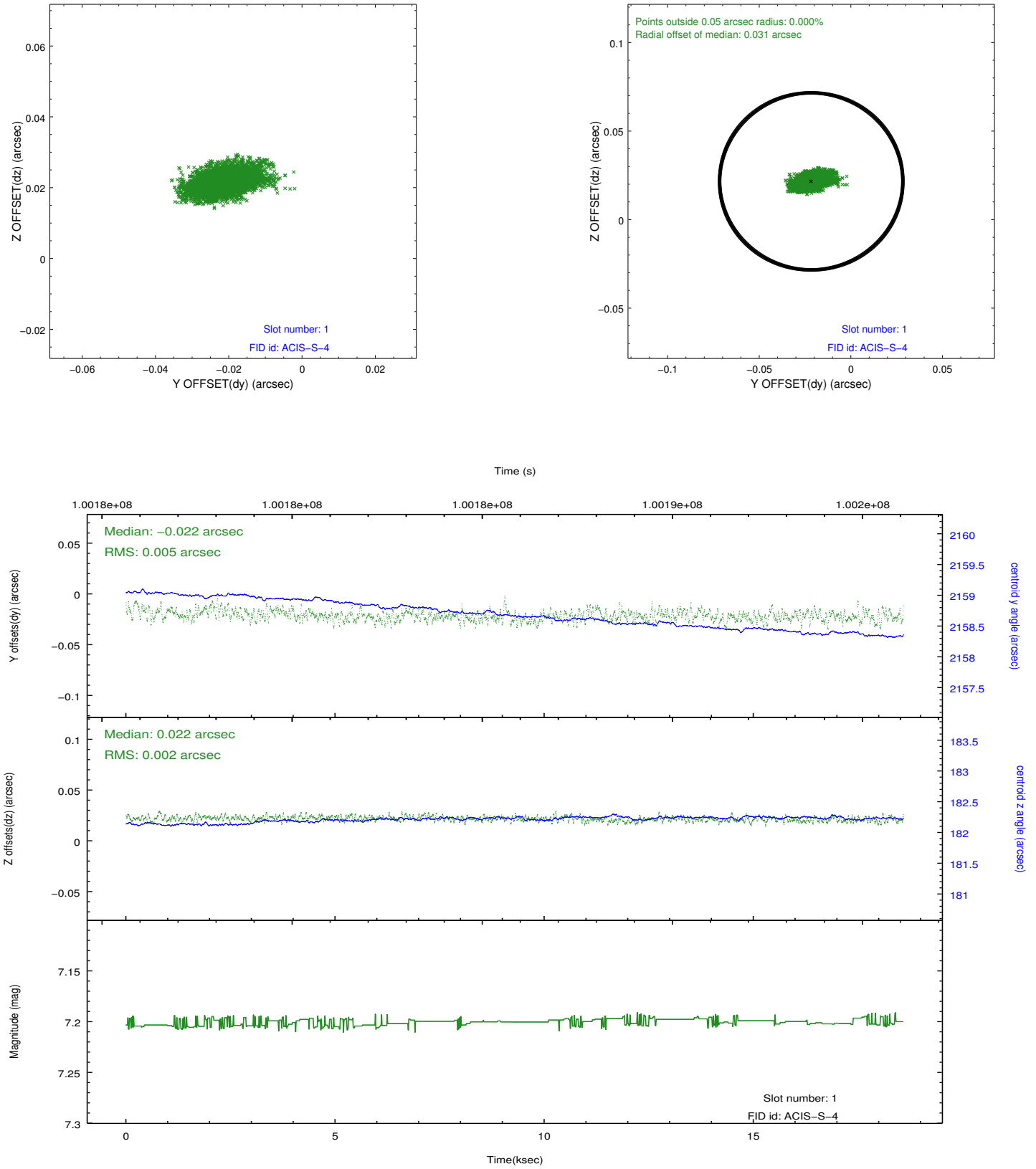


## 2.5 FID Slots

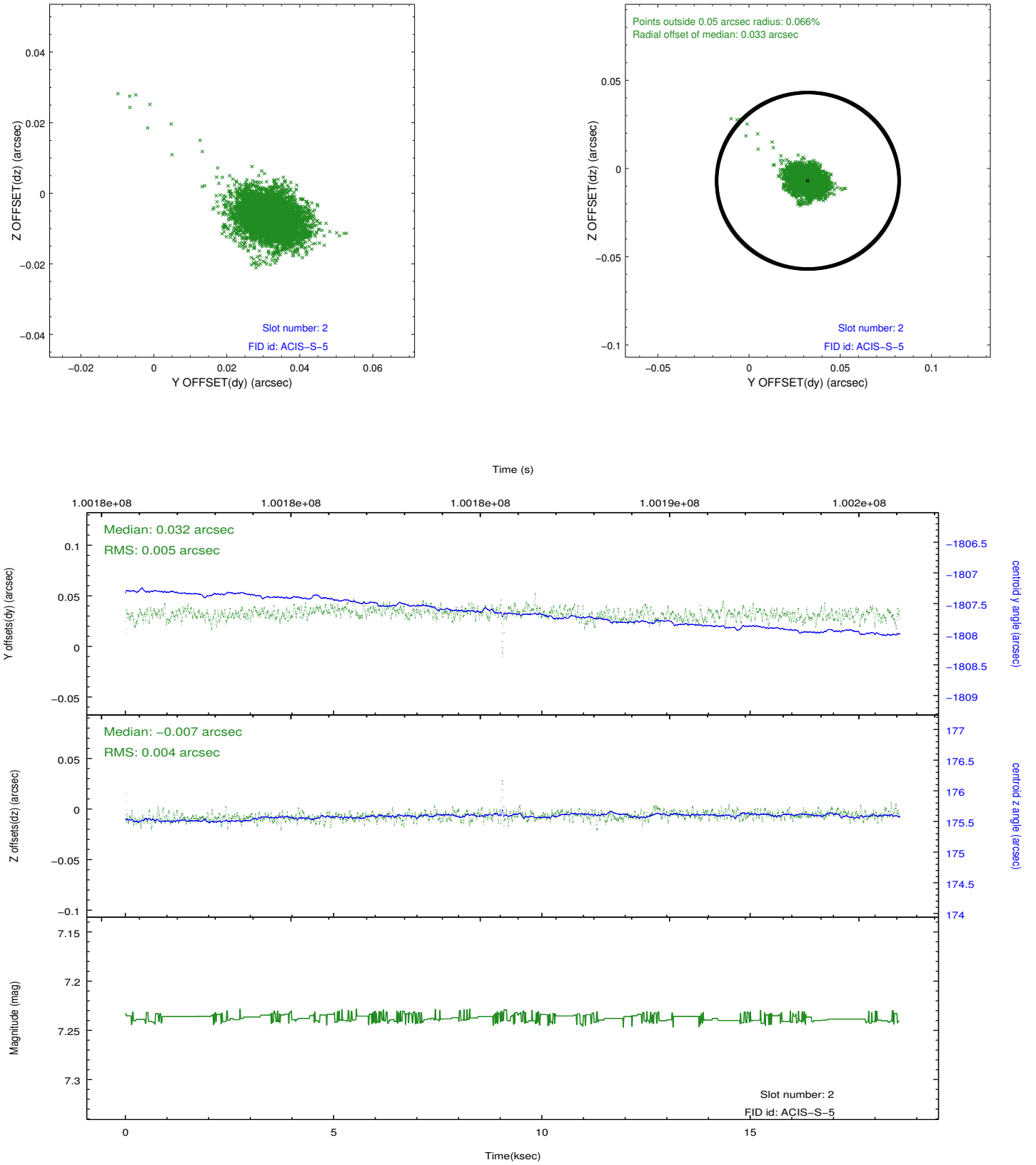
### 2.5.1 Slot 0



## 2.5.2 Slot 1



### 2.5.3 Slot 2



# A Summary

## A.1 Status

V&V Scientist	Beth Sundheim
V&V Date (YYYY-MM-DD)	2012.09.17
V&V Edition	1
V&V Disposition and Status	OK
V&V Charge Time	17.907

## A.2 Comments

Joint proposal with HST.