

V&V Reference Report

L2 ASCDS Version : 8.4.4

Observation 10438 - L2 Version 2
Chandra X-Ray Center

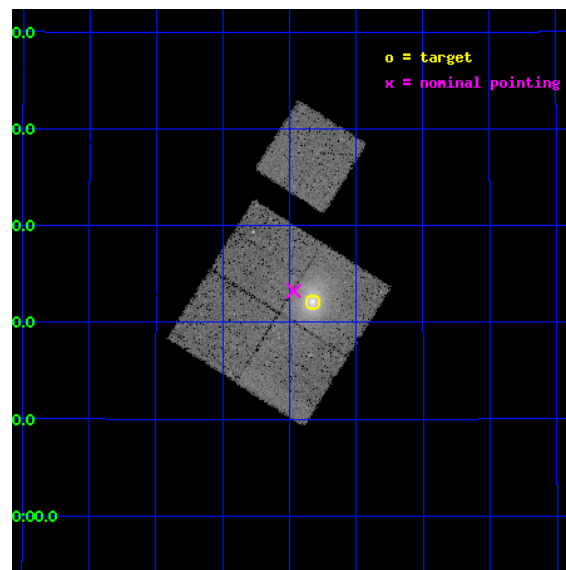
L2 Processing Date : May 25 2012

Contents

1	Front	2
2	OBI	3
2.1	OBI	3
2.1.1	Images	3
2.1.2	Bias	3
2.1.3	Parameters	4
2.1.4	Events	4
2.2	Compared Parameters	5
2.3	Aspect	6
2.4	Star Slots	9
2.4.1	Slot 3	9
2.4.2	Slot 4	10
2.4.3	Slot 5	11
2.4.4	Slot 6	12
2.4.5	Slot 7	13
2.5	FID Slots	14
2.5.1	Slot 0	14
2.5.2	Slot 1	15
2.5.3	Slot 2	16
A	Summary	17
A.1	Status	17
A.2	Comments	17

1 Front

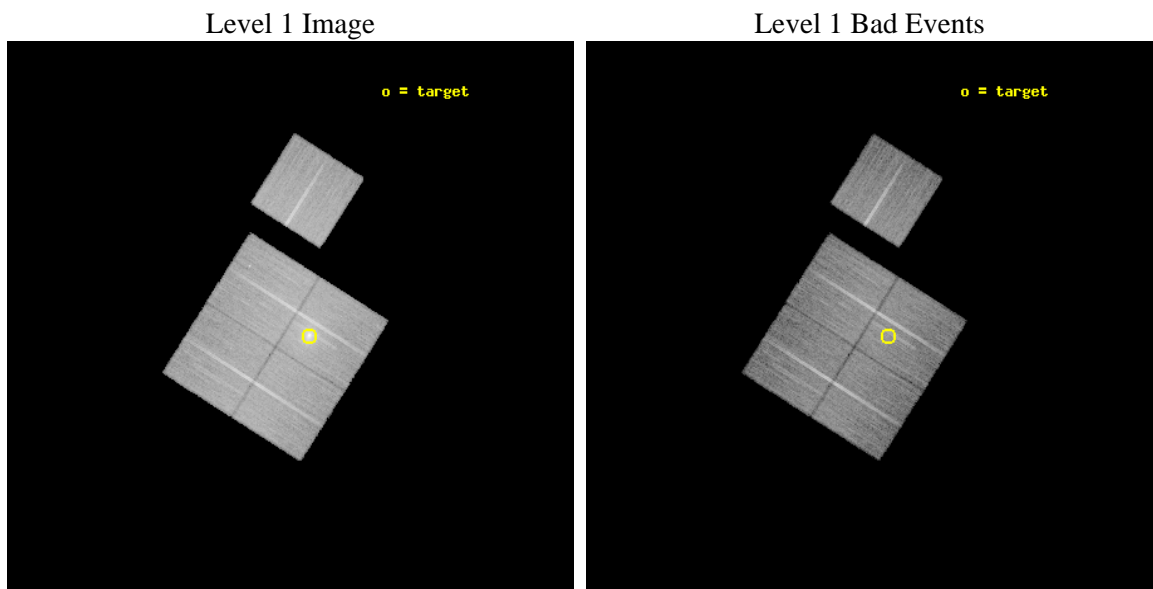
seq_num	800799	Sequence number
obs_id	10438	Observation id
title	LoCuSS: An Unbiased Multi-wavelength Study of the Cluster Quadchotomy - Gas Cooling and Cluster Merging at z=0.2	Proposal title
observer	Dr Graham Smith	Principal investigator
object	ABELL 2009	Source name
dtcycle	0	
cycle	P	events from which exps? Prim/Second/Both
ra_targ	225.081667	Observer's specified target RA [deg]
dec_targ	21.369139	Observer's specified target Dec [deg]
ra_nom	225.11693604192	Nominal RA [deg]
dec_nom	21.387785779749	Nominal Dec [deg]
roll_nom	32.391518582185	Nominal Roll [deg]
revision	2	Processing version of data
ontime	20153.100154996	Sum of GTIs [s]
livetime	19889.785064974	Livetime [s]
ontime0	20146.818333864	Sum of GTIs [s]
ontime1	20146.81819433	Sum of GTIs [s]
ontime2	20149.95919466	Sum of GTIs [s]
ontime3	20153.100154996	Sum of GTIs [s]
ontime6	20153.100154996	Sum of GTIs [s]
l2events	102179	Number of level 2 events



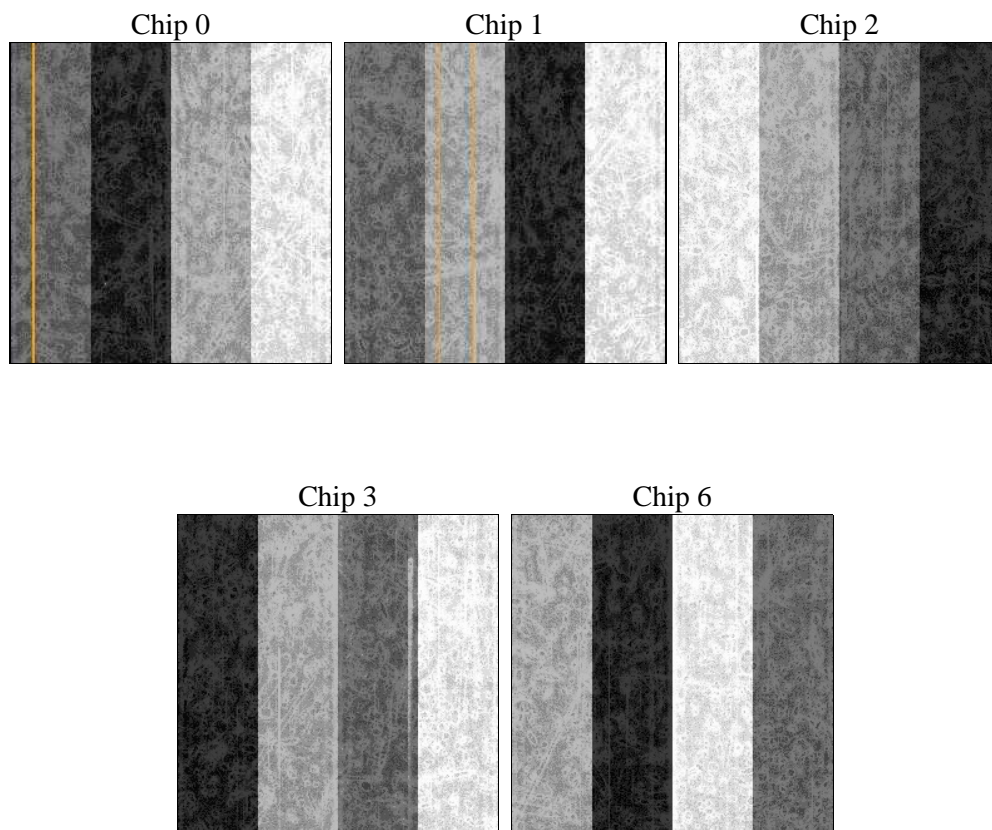
2 OBI

2.1 OBI

2.1.1 Images



2.1.2 Bias



2.1.3 Parameters

obi_num	0	Obi number	sched_exp_time	20000.000000	[s] Scheduled observation exposure time
ascdsver	8.4.4	Processing system revision	ontime	20153.100154996	Sum of GTIs [s]
caldbver	4.4.9	 	ontime0	20146.818333864	Sum of GTIs [s]
date	2012-05-25T18:34:30	Date and time of file creation	ontime1	20146.81819433	Sum of GTIs [s]
revision	2	Processing version of data	ontime2	20149.95919466	Sum of GTIs [s]
			ontime3	20153.100154996	Sum of GTIs [s]
			ontime6	20153.100154996	Sum of GTIs [s]
			l1events	914250	Number of level 1 events

2.1.4 Events

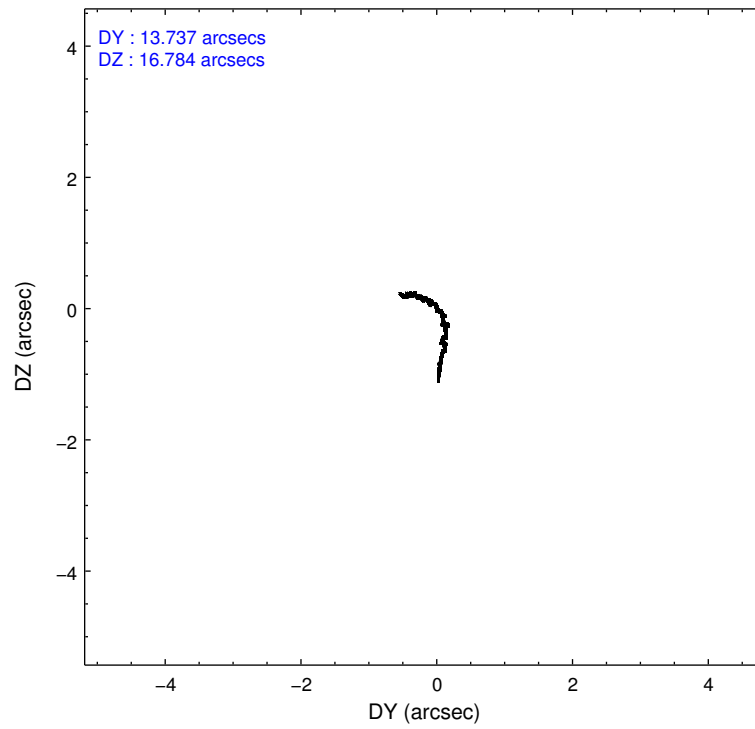
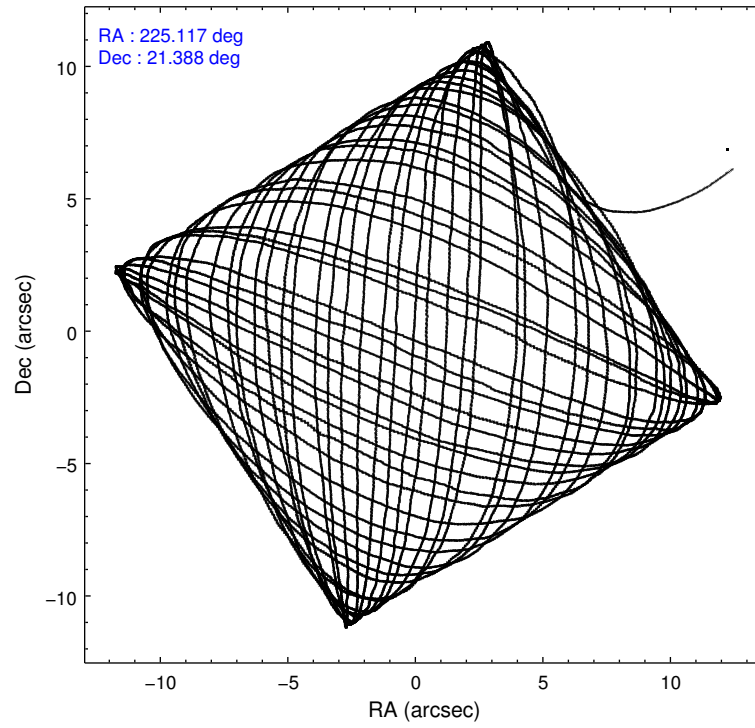
	ccd 0	ccd 1	ccd 2	ccd 3	ccd 6		ccd 0	ccd 1	ccd 2	ccd 3	ccd 6
level 1 events	164427	171914	191472	208146	178291	grade 0 events	6576	8195	7845	28962	6829
rejected events	147018	151553	172877	164333	160504		3%	4%	4%	13%	3%
rejected %	89%	88%	90%	78%	90%	grade 1 events	91	103	119	273	93
							0%	0%	0%	0%	0%
						grade 2 events	4470	4822	4572	6539	4239
							2%	2%	2%	3%	2%
						grade 3 events	2066	2232	1905	2747	1979
							1%	1%	0%	1%	1%
						grade 4 events	1911	2205	2037	2733	2016
							1%	1%	1%	1%	1%
						grade 5 events	6154	7141	6136	7719	7284
							3%	4%	3%	3%	4%
						grade 6 events	3559	4202	3417	4152	4001
							2%	2%	1%	1%	2%
						grade 7 events	139600	143014	165441	155021	151850
							84%	83%	86%	74%	85%

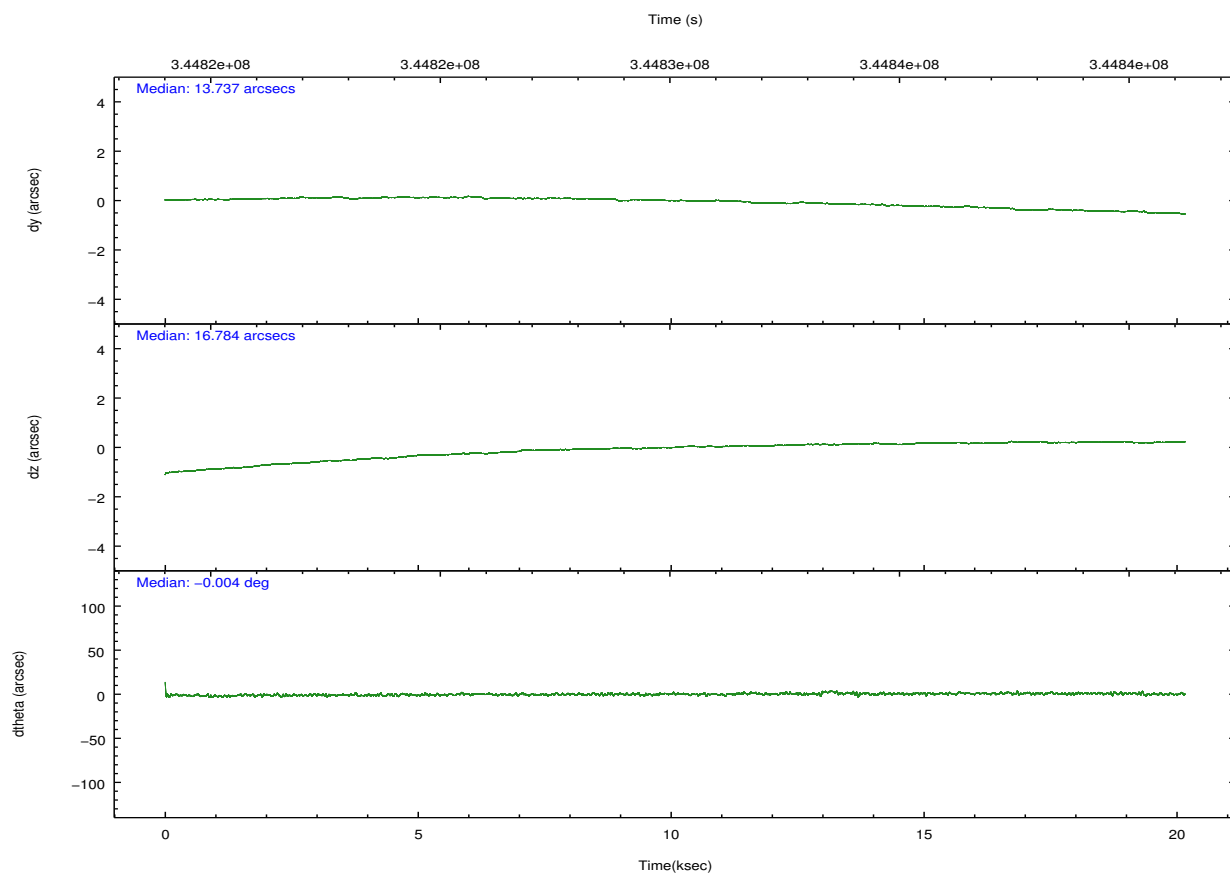
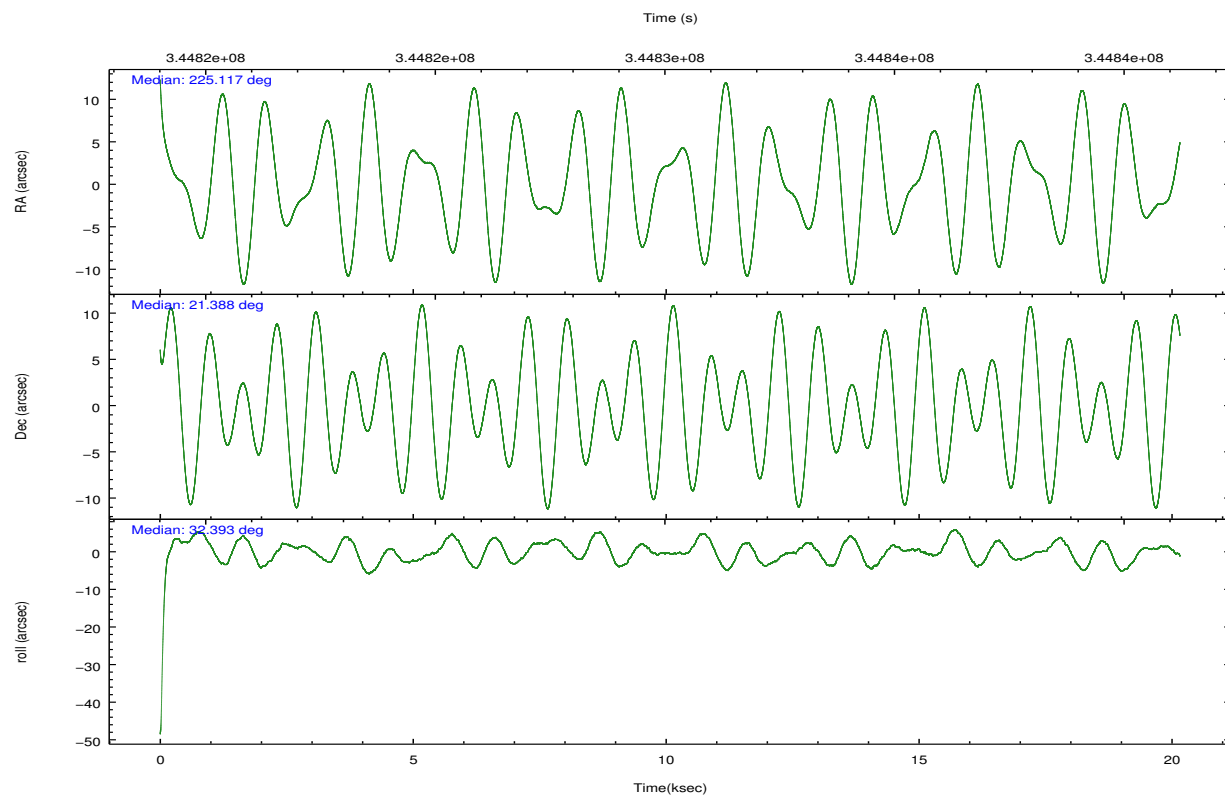
2.2 Compared Parameters

Parameter	Planned	Actual
Instrument	ACIS	ACIS
Detector	ACIS-01236	ACIS-01236
Grating	NONE	NONE
Data mode	VFAINT	VFAINT
Observation mode	POINTING	POINTING
[deg] Pointing RA	225.103351	225.1169360419198
[deg] Pointing Dec	21.363339	21.38778577974892
[deg] Pointing Roll	32.187819	32.39151858218497
[mm] SIM focus pos	-0.782348	-0.7809083437167272
[mm] SIM defocus	0	0.001439871863259334
[mm] SIM translation stage pos	-227.592463	-227.5933067819097
[mm] SIM translation stage offset	-6	-5.999146221020027
[s] Observation start time (MET)	344820189.184000	344818536.03214
Observation start date	2008-12-04T23:22:04	2008-12-04T22:55:36
[s] Observation end time (MET)	344840189.184000	344841015.82075
Observation end date	2008-12-05T04:55:24	2008-12-05T05:10:15
Read mode	TIMED	TIMED

Parameter	Planned	Actual
Obspar format version number	7	7
Obspar file type	PREDICTED	ACTUAL
Obspar update status	NONE	UPDATED
Number of optional ACIS chips dropped	0	0
On-chip summing requested	N	N
Subarray requested	NONE	NONE
Alternating exposures requested	N	N
[s] Primary exposure time	0.000000	3.1

2.3 Aspect



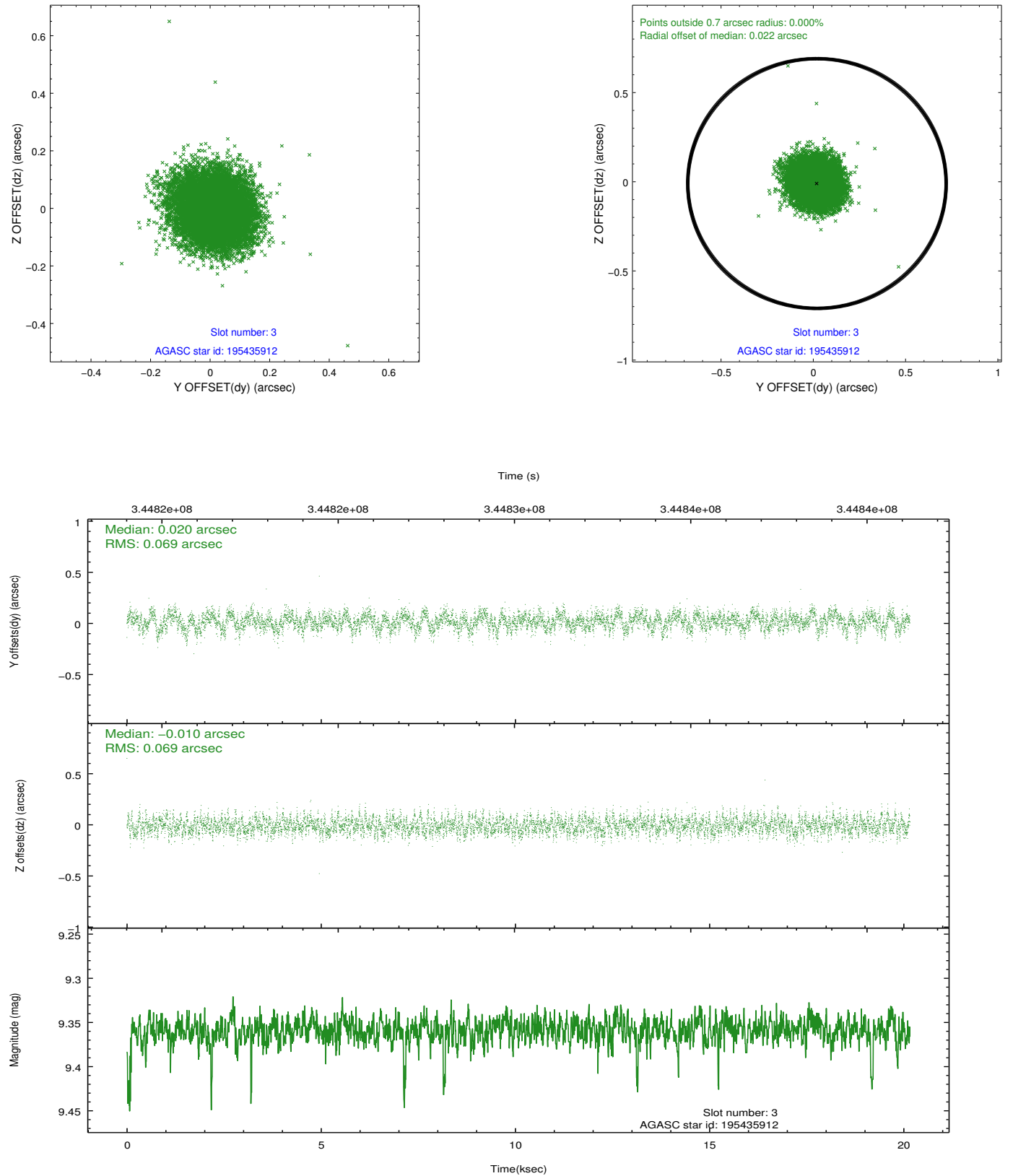


Slot Statistics

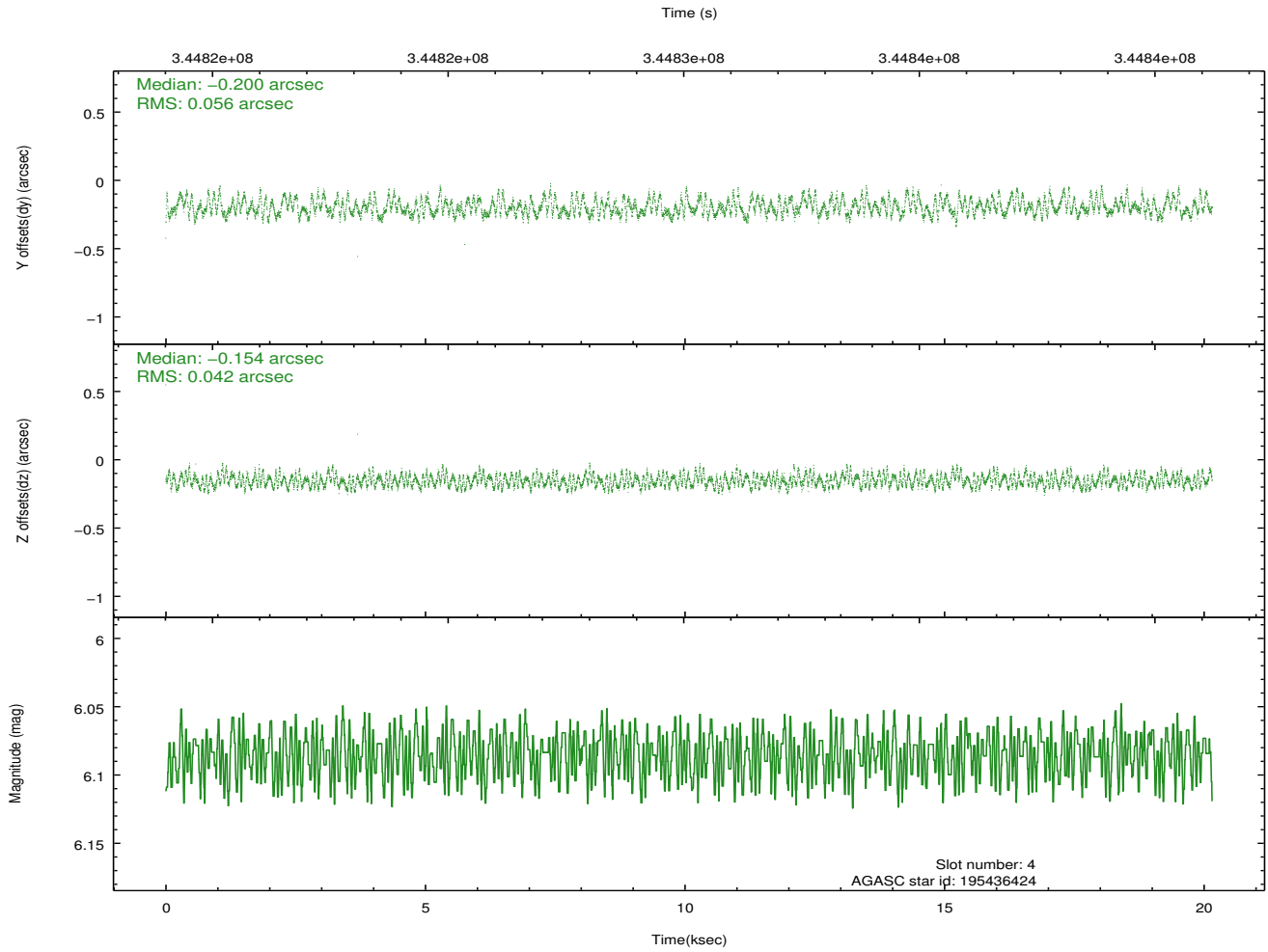
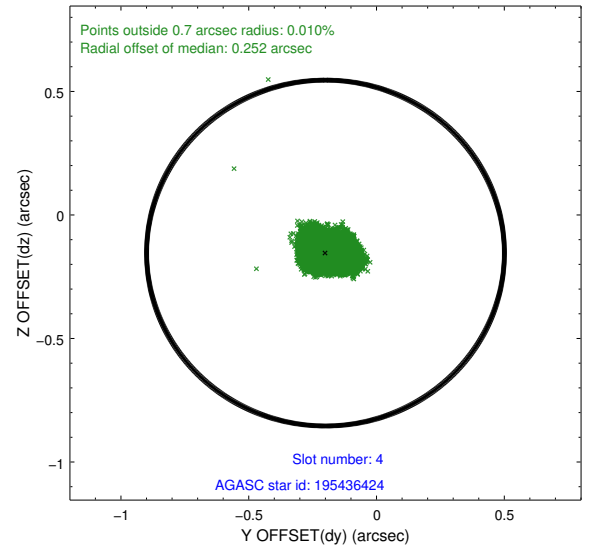
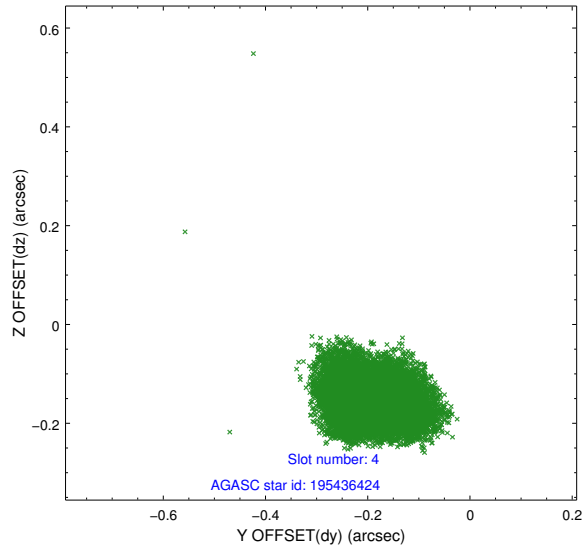
slot	status	id	mag	n_pts	med_dy	med_dz	dr1	dr2	ra	dec	mean_y	mean_z
0	FID	ACIS-I-1	7.01	4916	0.062	-0.076	0.017	0.041	0.000000	0.000000	925.82	-963.48
1	FID	ACIS-I-2	6.96	4916	-0.198	0.014	0.011	0.021	0.000000	0.000000	-768.74	-969.20
2	FID	ACIS-I-4	6.92	4916	0.038	0.125	0.017	0.027	0.000000	0.000000	2145.20	937.19
3	GUIDE	195435912	9.36	9809	0.020	-0.010	0.104	0.166	225.108868	22.040888	1314.32	2054.46
4	GUIDE	195436424	6.08	9835	-0.200	-0.154	0.075	0.118	225.217820	22.045589	1631.61	1875.35
5	GUIDE	195437336	9.32	9820	0.030	0.044	0.108	0.173	225.080653	21.474251	148.33	378.74
6	GUIDE	195437632	6.97	9835	0.069	0.020	0.081	0.132	224.264976	21.555420	-2003.64	2086.90
7	GUIDE	195436744	9.72	9811	0.076	0.096	0.116	0.189	225.481752	22.018957	2326.74	1326.30

2.4 Star Slots

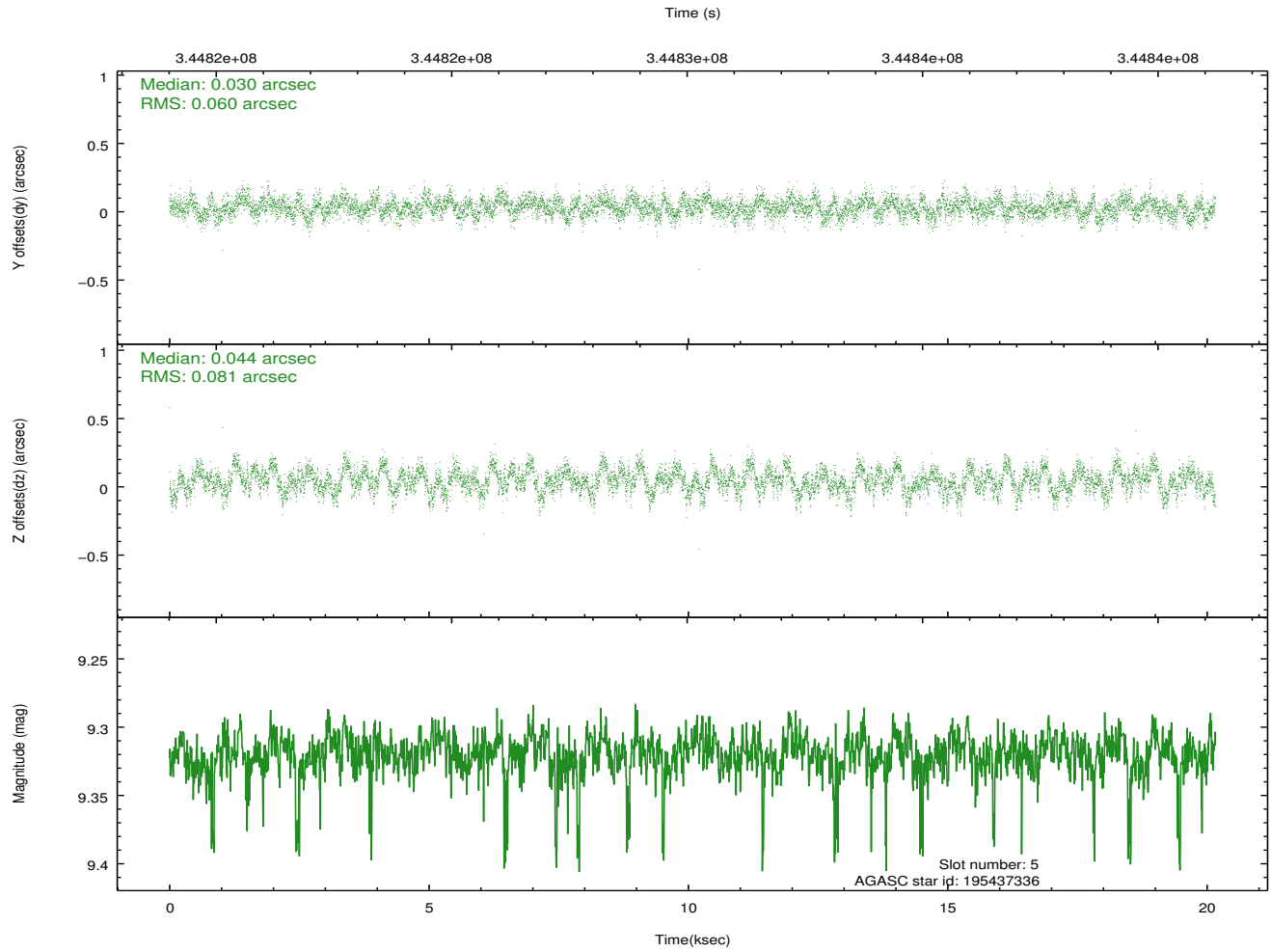
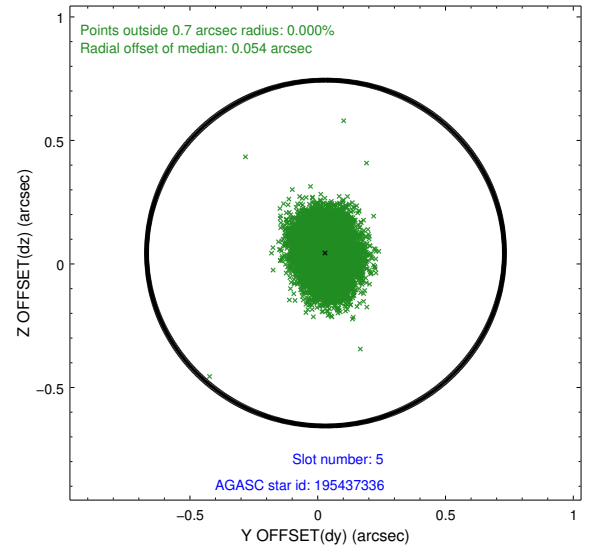
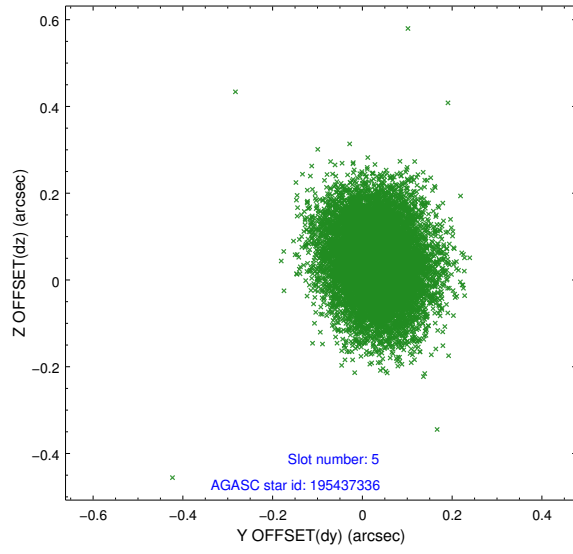
2.4.1 Slot 3



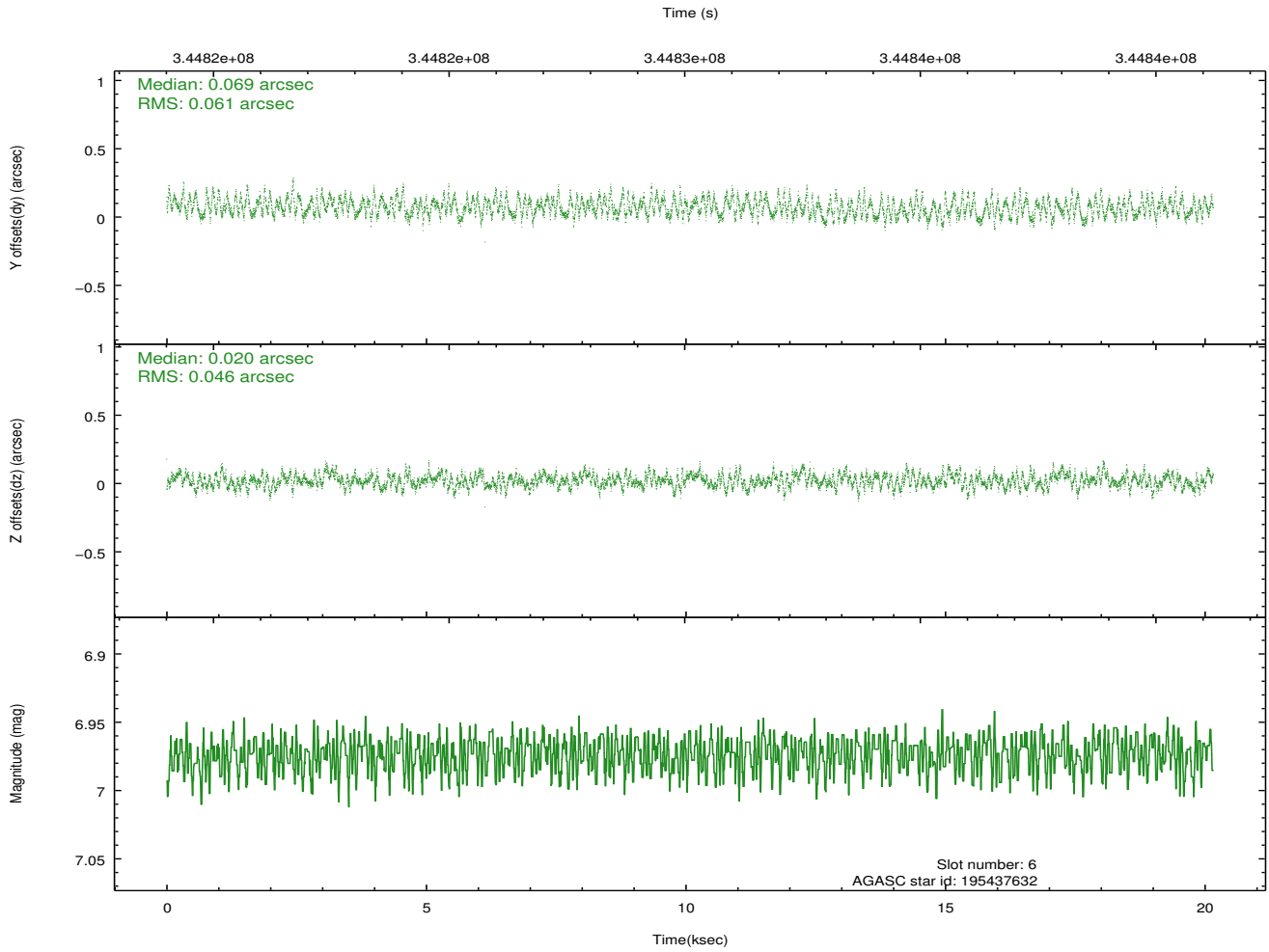
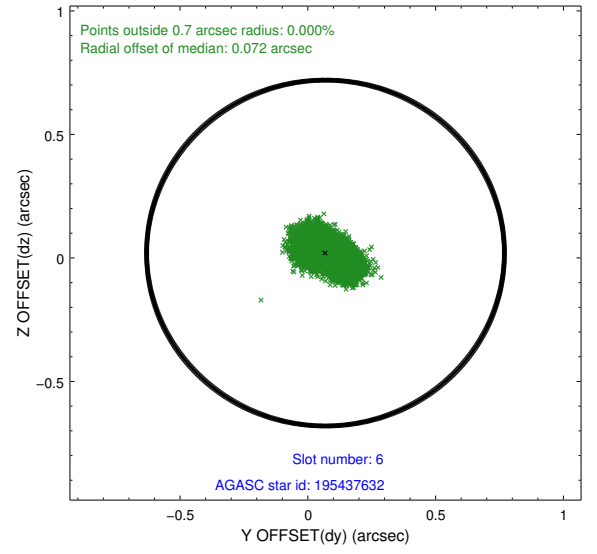
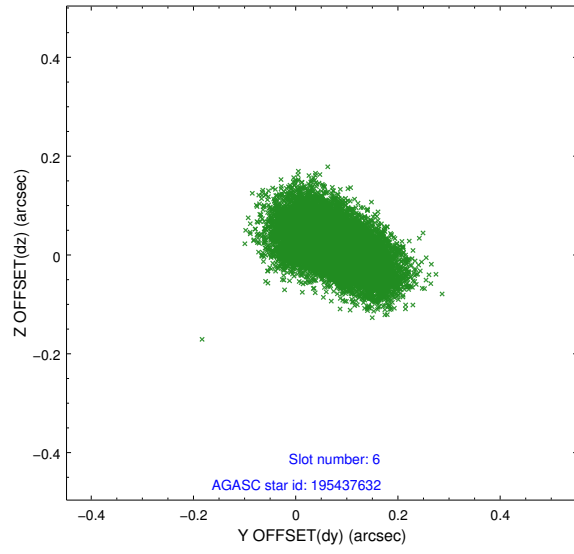
2.4.2 Slot 4



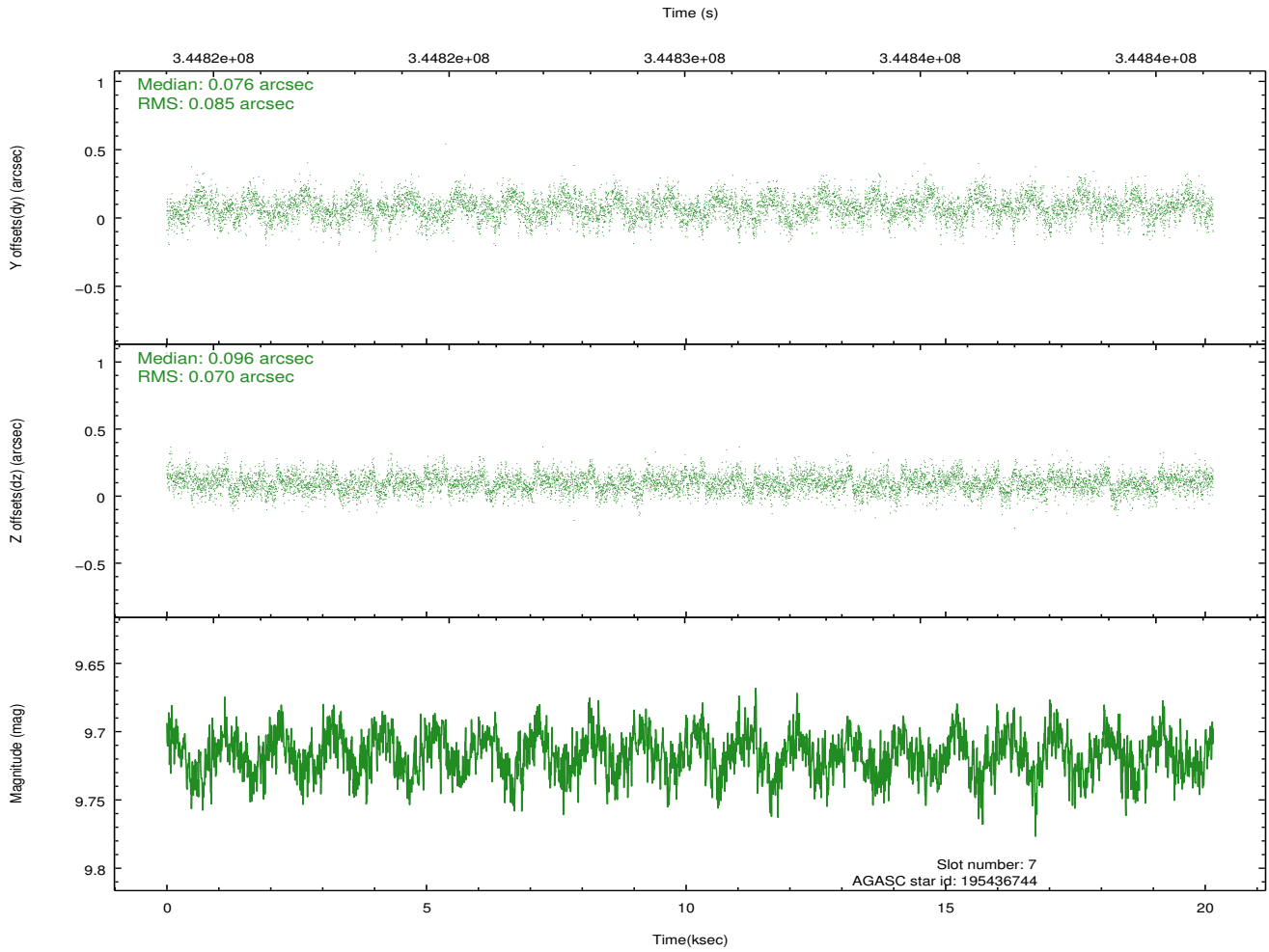
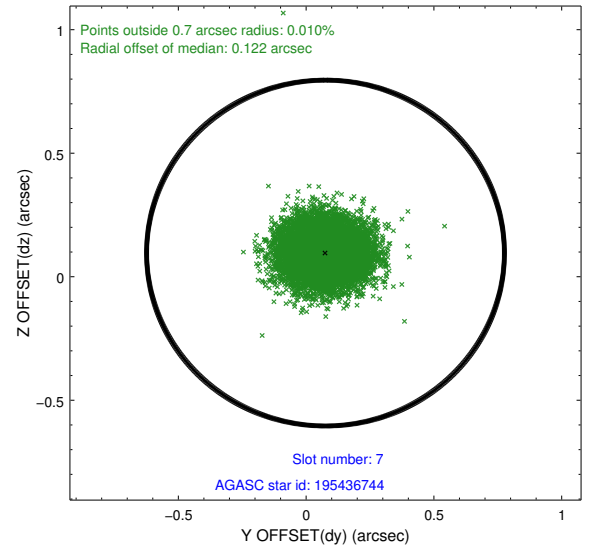
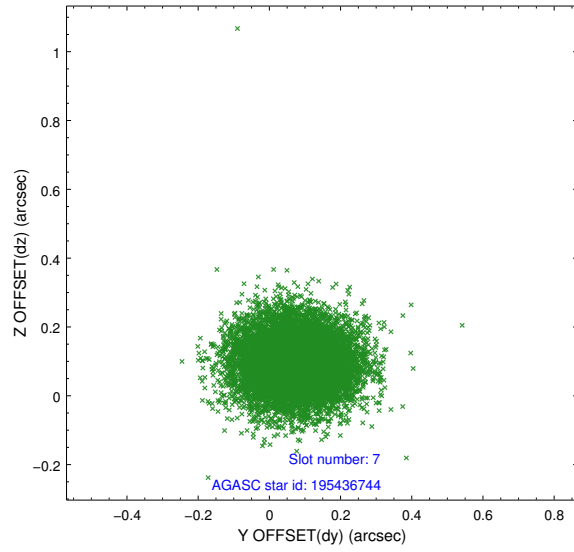
2.4.3 Slot 5



2.4.4 Slot 6

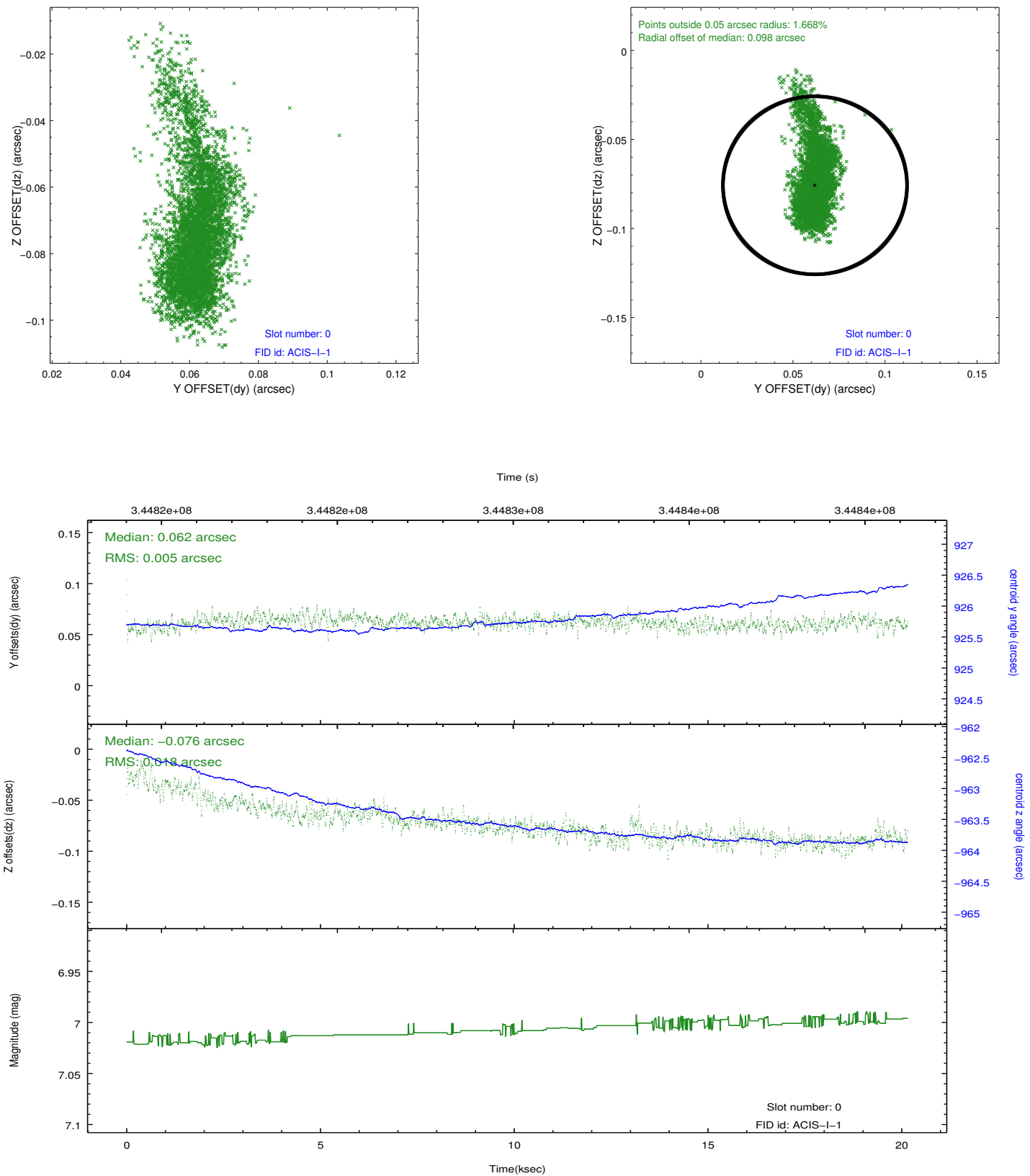


2.4.5 Slot 7

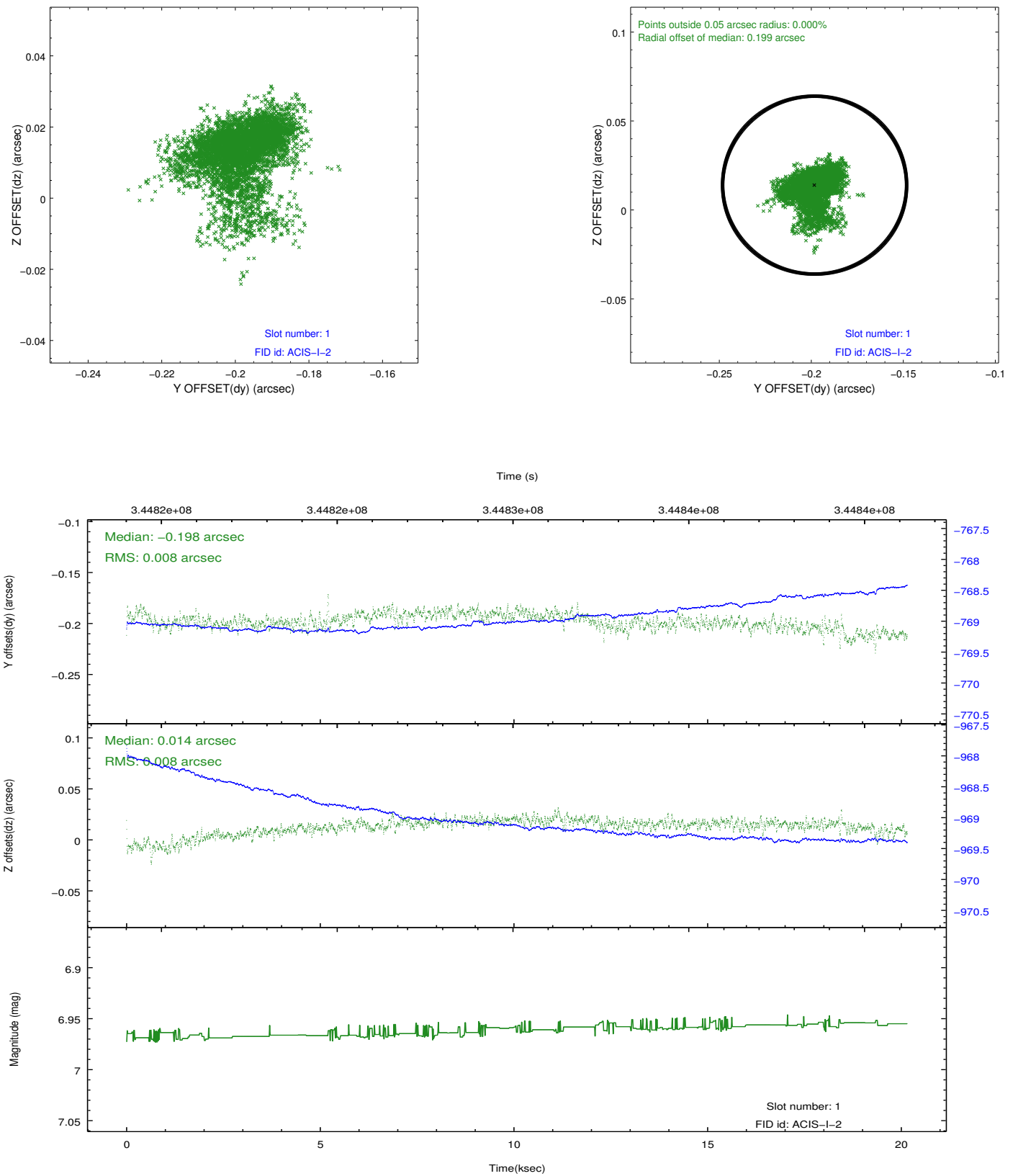


2.5 FID Slots

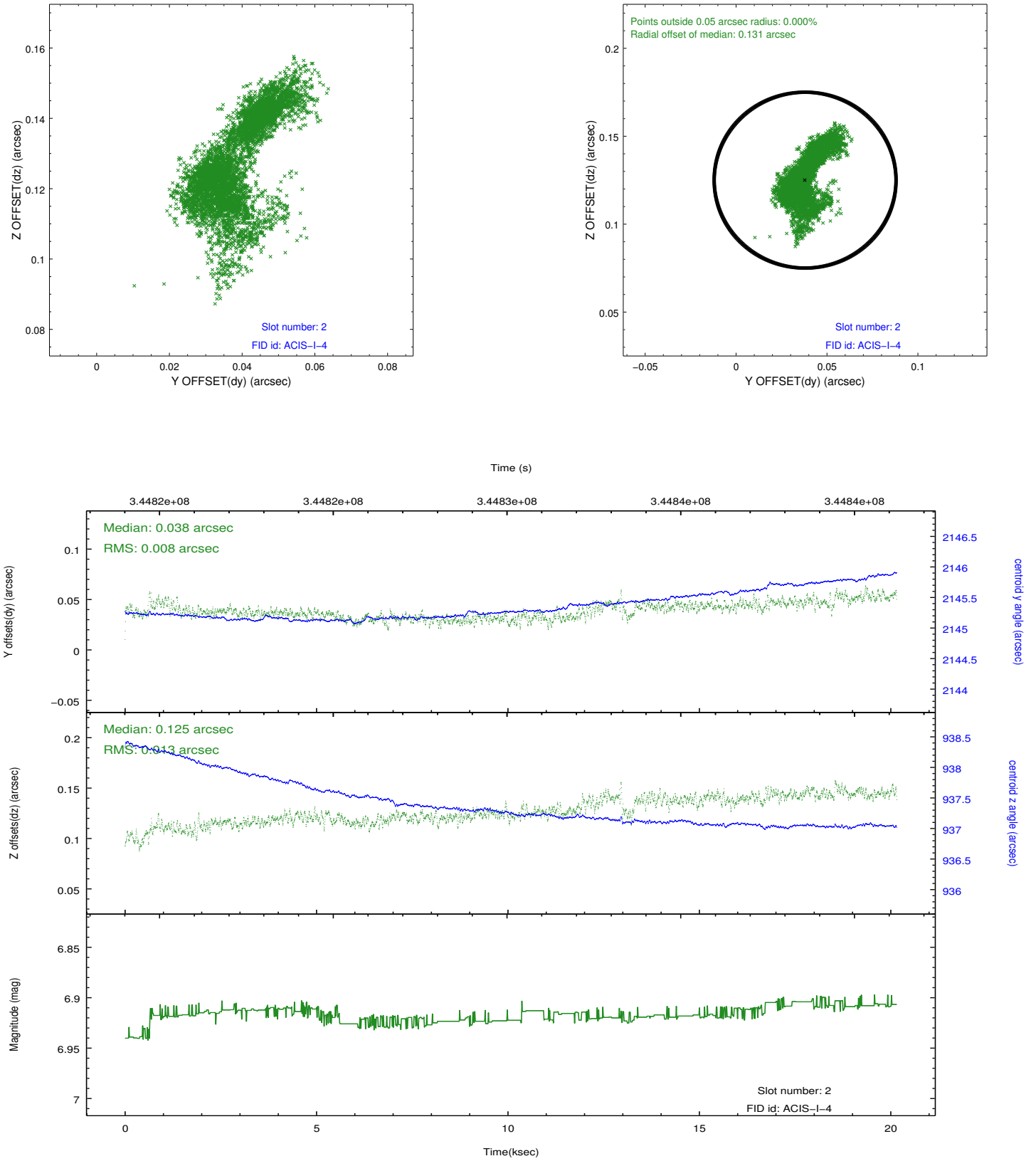
2.5.1 Slot 0



2.5.2 Slot 1



2.5.3 Slot 2



A Summary

A.1 Status

V&V Scientist	Joy Nichols
V&V Date (YYYY-MM-DD)	2012.06.01
V&V Edition	1
V&V Disposition and Status	OK
V&V Charge Time	20.1531001

A.2 Comments