

V&V Reference Report

L2 ASCDS Version : 8.4.4

Observation 10358 - L2 Version 2
Chandra X-Ray Center

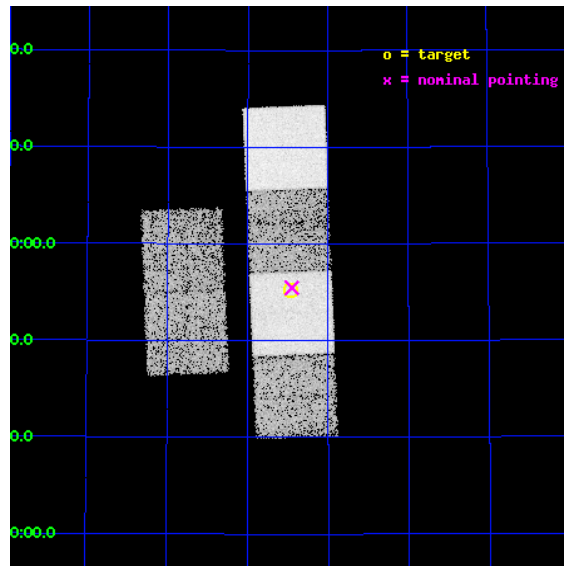
L2 Processing Date : May 30 2012

Contents

1	Front	2
2	OBI	3
2.1	OBI	3
2.1.1	Images	3
2.1.2	Bias	3
2.1.3	Parameters	4
2.1.4	Events	4
2.2	Compared Parameters	5
2.3	Aspect	6
2.4	Star Slots	9
2.4.1	Slot 3	9
2.4.2	Slot 4	10
2.4.3	Slot 5	11
2.4.4	Slot 6	12
2.4.5	Slot 7	13
2.5	FID Slots	14
2.5.1	Slot 0	14
2.5.2	Slot 1	15
2.5.3	Slot 2	16
A	Summary	17
A.1	Status	17
A.2	Comments	17

1 Front

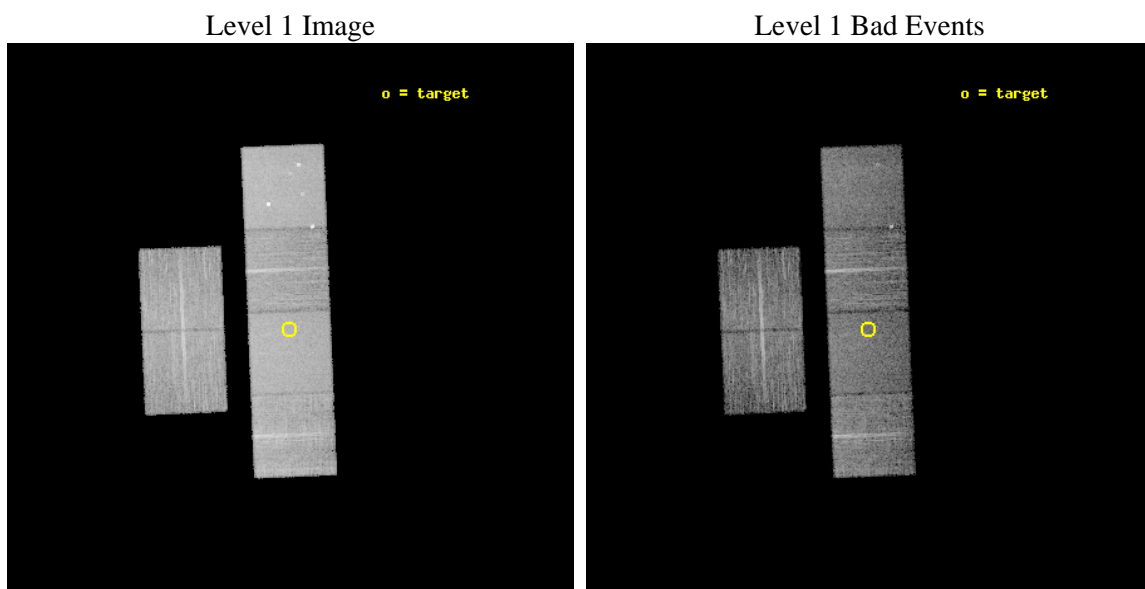
seq_num	701901	Sequence number
obs_id	10358	Observation id
title	Testing the Radiative-Driving Hypothesis of Quasar Outflows	Propos
observer	Dr. Rajib Ganguly	Principal investigator
object	SDSS J1545+5555	Source name
dtcycle	0	
cycle	P	events from which exps? Prim/Second/Both
ra_targ	236.366667	Observer's specified target RA [deg]
dec_targ	55.920222	Observer's specified target Dec [deg]
ra_nom	236.36239541448	Nominal RA [deg]
dec_nom	55.924501286828	Nominal Dec [deg]
roll_nom	87.66023430158	Nominal Roll [deg]
revision	2	Processing version of data
ontime	7451.9367671609	Sum of GTIs [s]
livetime	7357.5758567975	Livetime [s]
ontime2	7451.9778170586	Sum of GTIs [s]
ontime3	7451.8136570454	Sum of GTIs [s]
ontime5	7451.895737052	Sum of GTIs [s]
ontime6	7448.6136868	Sum of GTIs [s]
ontime7	7451.9367671609	Sum of GTIs [s]
ontime8	7445.2905765176	Sum of GTIs [s]
l2events	129940	Number of level 2 events



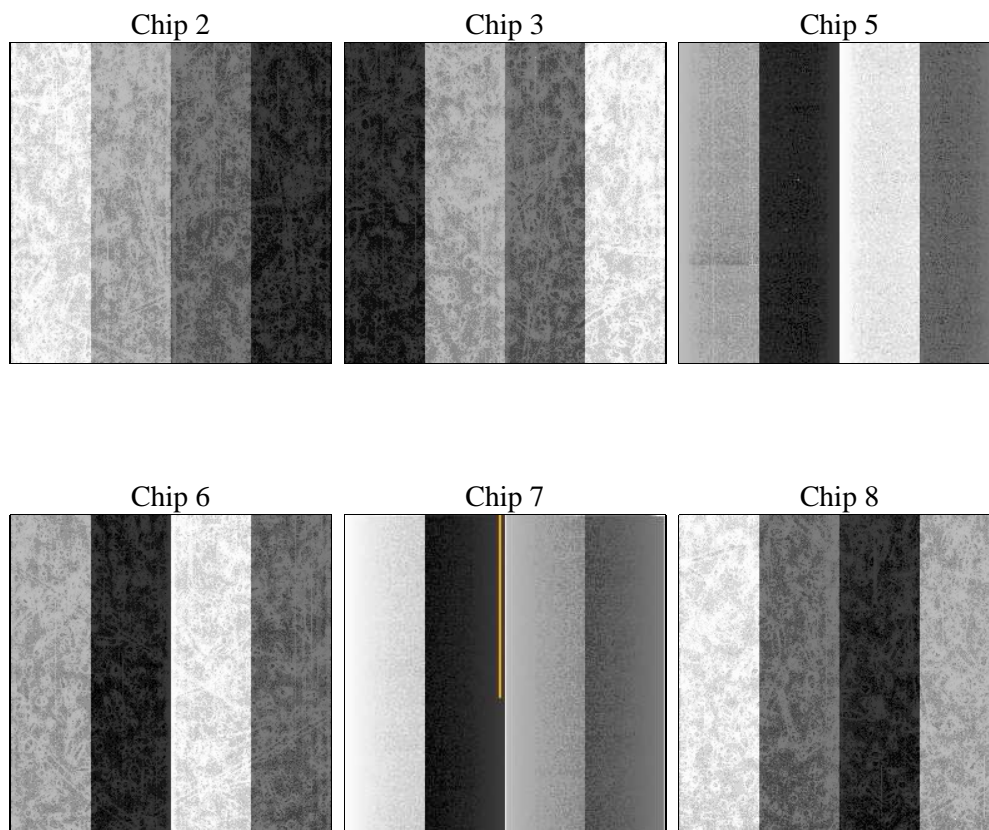
2 OBI

2.1 OBI

2.1.1 Images



2.1.2 Bias



2.1.3 Parameters

obi_num	0	Obi number	sched_exp_time	7700.000000	[s] Scheduled observation exposure time
ascdsver	8.4.4	Processing system revision	ontime	7451.9367671609	Sum of GTIs [s]
caldsver	4.4.9	 	ontime2	7451.9778170586	Sum of GTIs [s]
date	2012-05-30T23:23:52	Date and time of file creation	ontime3	7451.8136570454	Sum of GTIs [s]
revision	2	Processing version of data	ontime5	7451.895737052	Sum of GTIs [s]
			ontime6	7448.6136868	Sum of GTIs [s]
			ontime7	7451.9367671609	Sum of GTIs [s]
			ontime8	7445.2905765176	Sum of GTIs [s]
			l1events	571124	Number of level 1 events

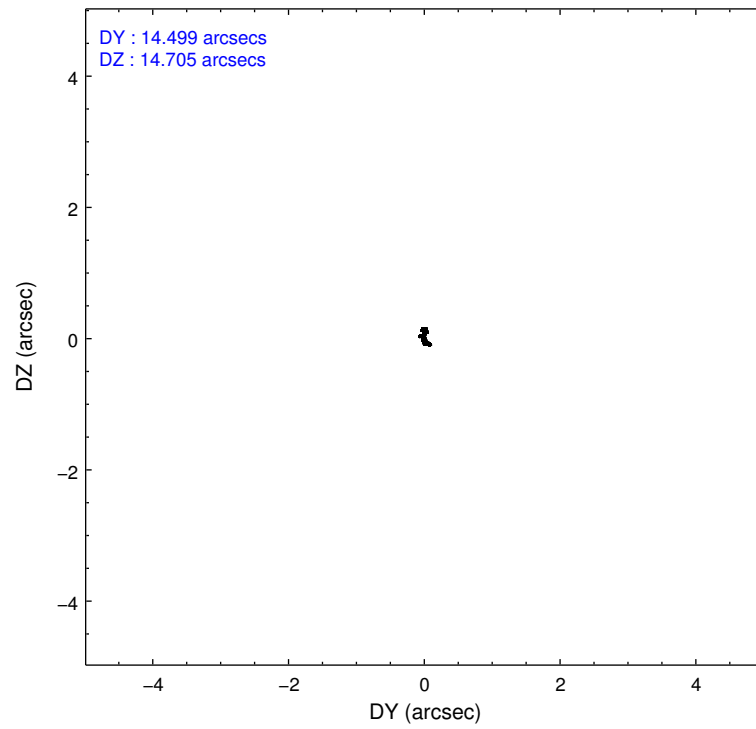
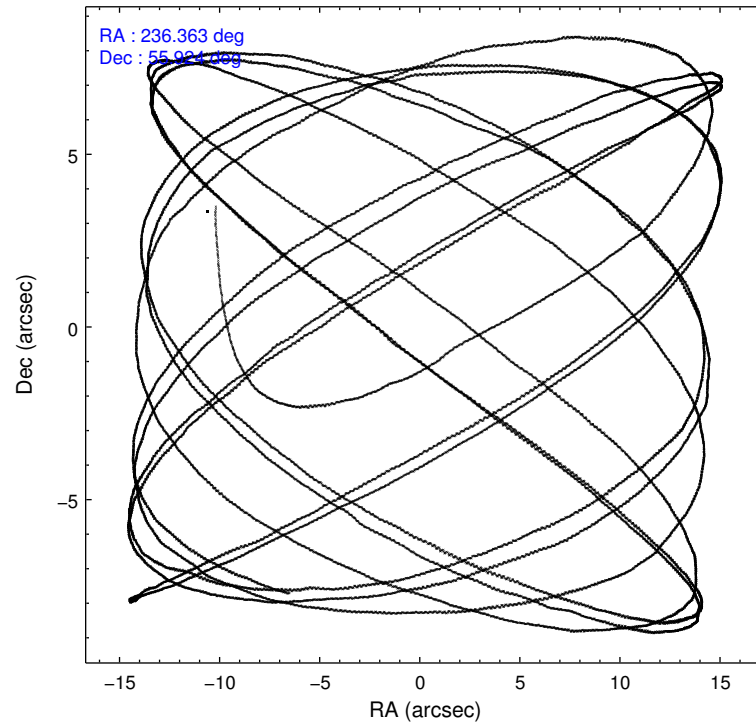
2.1.4 Events

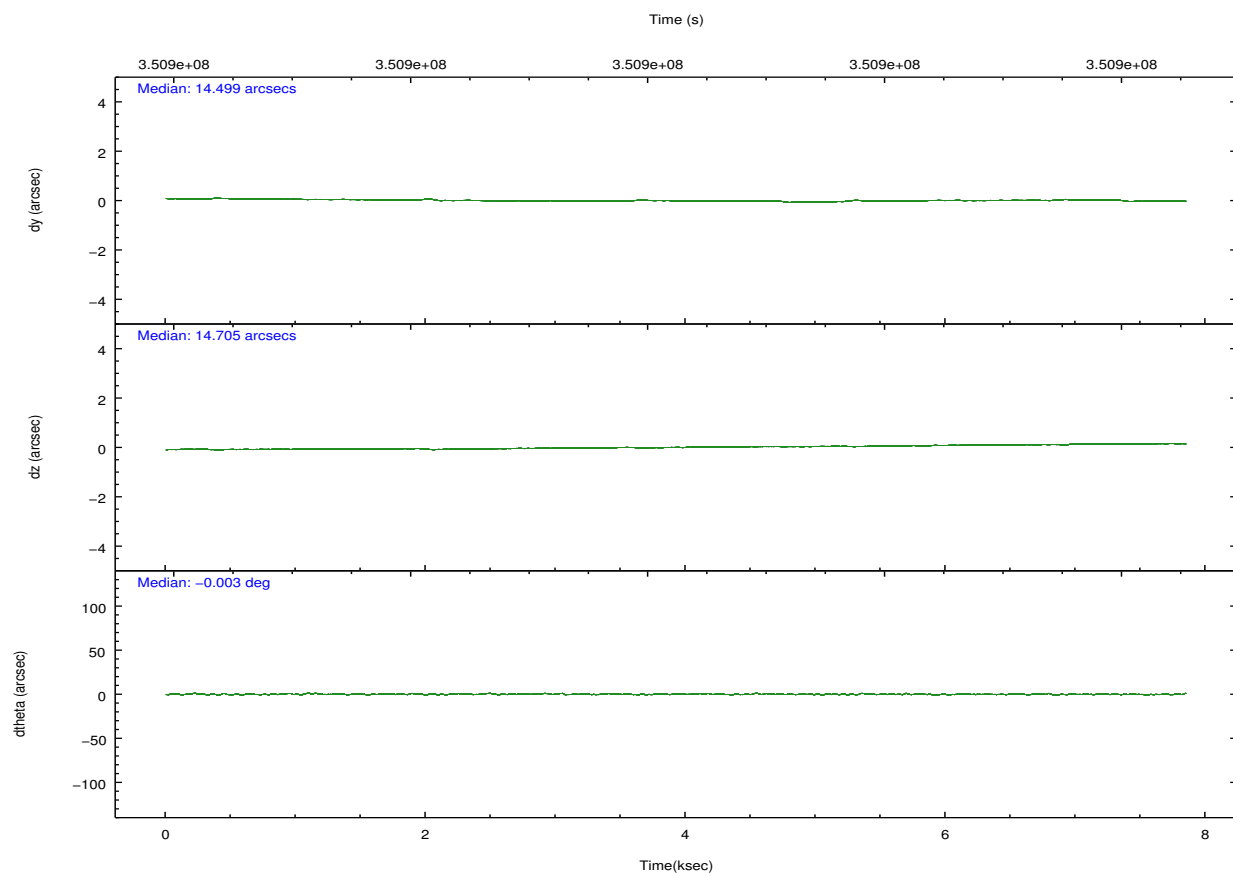
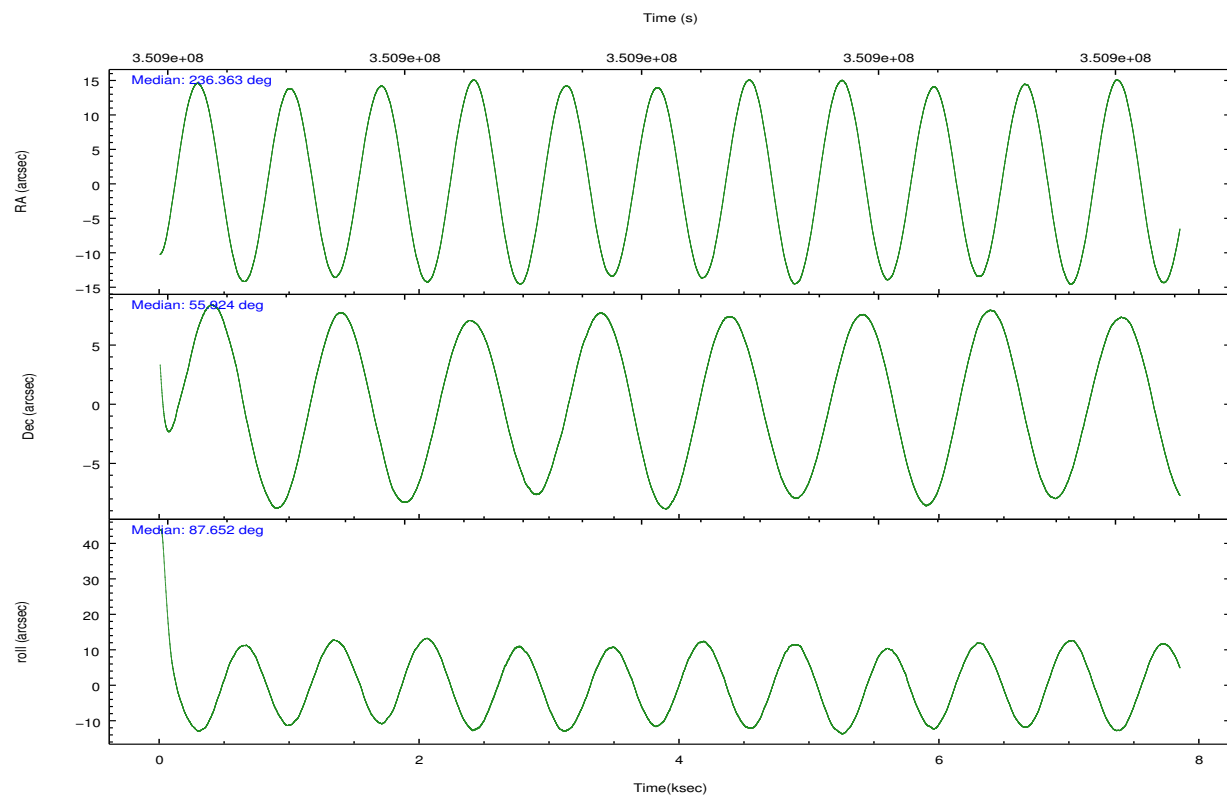
	ccd 2	ccd 3	ccd 5	ccd 6	ccd 7	ccd 8		ccd 2	ccd 3	ccd 5	ccd 6	ccd 7	ccd 8
level 1 events	81189	77126	124195	78576	108330	101708	grade 0 events	3720	3815	6381	3619	3901	7169
rejected events	72167	68072	66239	69277	63173	79498		4%	4%	5%	4%	3%	7%
rejected %	88%	88%	53%	88%	58%	78%	grade 1 events	56	51	423	54	119	89
								0%	0%	0%	0%	0%	0%
							grade 2 events	2024	1839	17782	1990	9320	4957
								2%	2%	14%	2%	8%	4%
							grade 3 events	802	862	1968	889	3616	2337
								0%	1%	1%	1%	3%	2%
							grade 4 events	808	853	1890	827	3878	2202
								0%	1%	1%	1%	3%	2%
							grade 5 events	3207	3647	8699	3547	10159	4968
								3%	4%	7%	4%	9%	4%
							grade 6 events	1672	1691	30010	1989	24480	5565
								2%	2%	24%	2%	22%	5%
							grade 7 events	68900	64368	57042	65661	52857	74421
								84%	83%	45%	83%	48%	73%

2.2 Compared Parameters

Parameter	Planned	Actual	Parameter	Planned	Actual
Instrument	ACIS	ACIS	Obspar format version number	7	7
Detector	ACIS-235678	ACIS-235678	Obspar file type	PREDICTED	ACTUAL
Grating	NONE	NONE	Obspar update status	NONE	UPDATED
Data mode	FAINT	FAINT	CCD I0 on	N	N
Observation mode	POINTING	POINTING	CCD I1 on	N	N
[deg] Pointing RA	236.385657	236.3623954144787	CCD I2 on	O1	Y
[deg] Pointing Dec	55.900412	55.92450128682752	CCD I3 on	O2	Y
[deg] Pointing Roll	87.484283	87.66023430157981	CCD S0 on	N	N
[mm] SIM focus pos	-0.684267	-0.6828225247311905	CCD S1 on	Y	Y
[mm] SIM defocus	0	0.001444936568705701	CCD S2 on	Y	Y
[mm] SIM translation stage pos	-190.132523	-190.1425803651734	CCD S3 on	Y	Y
[mm] SIM translation stage offset	0	0.01005778216563158	CCD S4 on	Y	Y
[s] Observation start time (MET)	350896476.184000	350895257.54539	CCD S5 on	N	N
Observation start date	2009-02-13T07:13:30	2009-02-13T06:54:17	Number of optional ACIS chips dropped	0	0
[s] Observation end time (MET)	350904176.184000	350905019.13337	On-chip summing requested	N	N
Observation end date	2009-02-13T09:21:50	2009-02-13T09:36:59	Subarray requested	NONE	NONE
Read mode	TIMED	TIMED	Alternating exposures requested	N	N
			[s] Primary exposure time	0.000000	3.2

2.3 Aspect



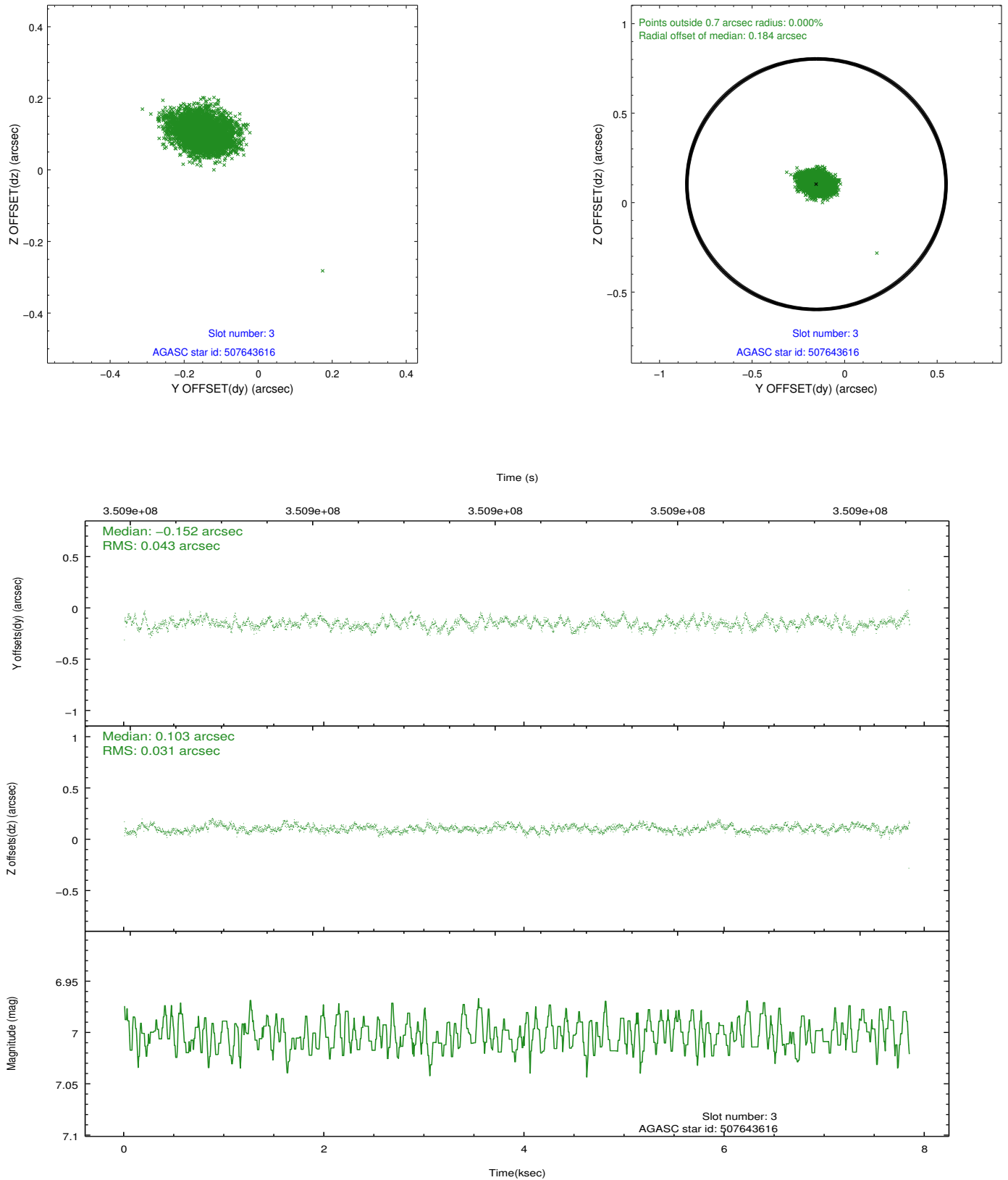


Slot Statistics

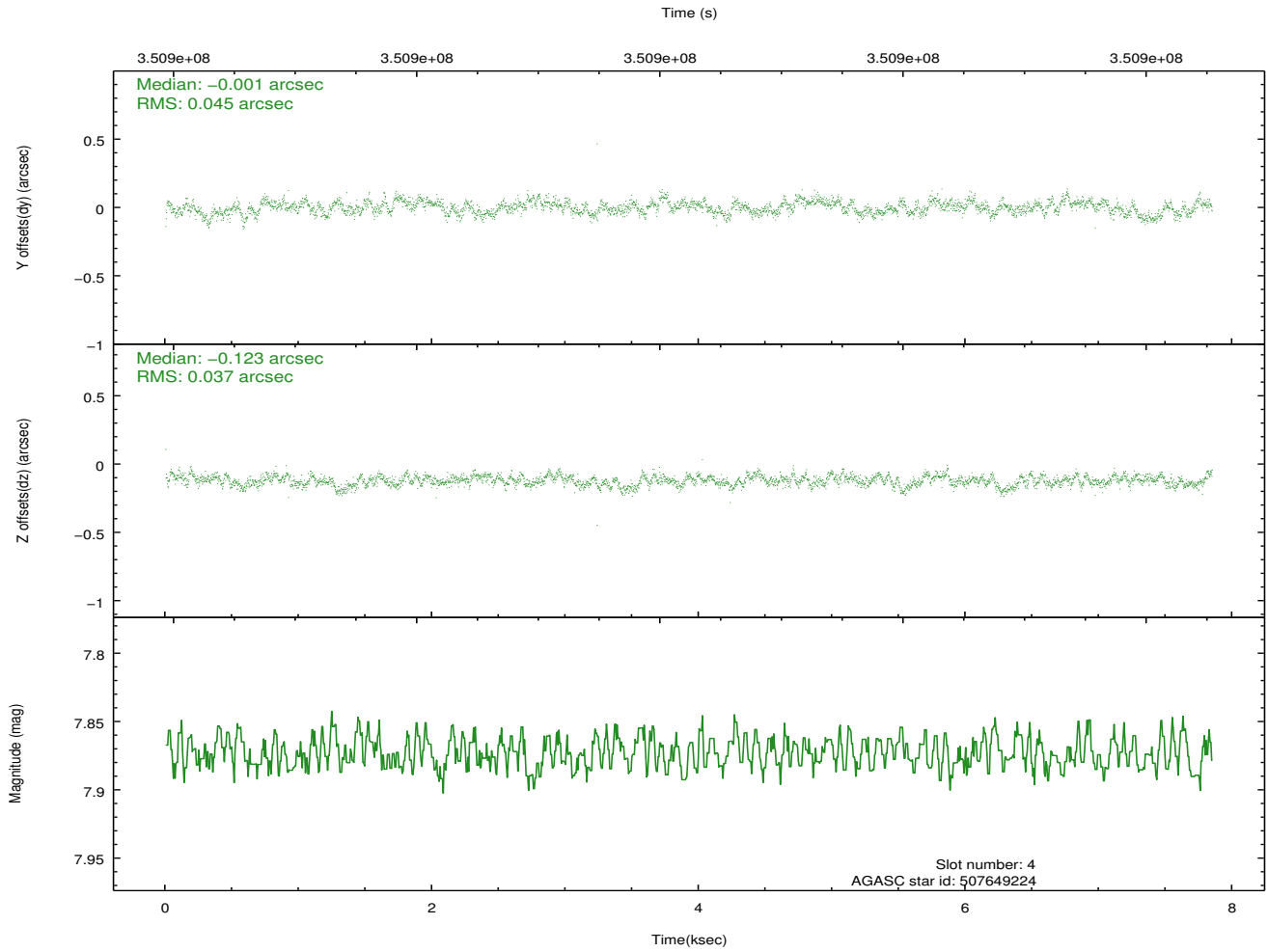
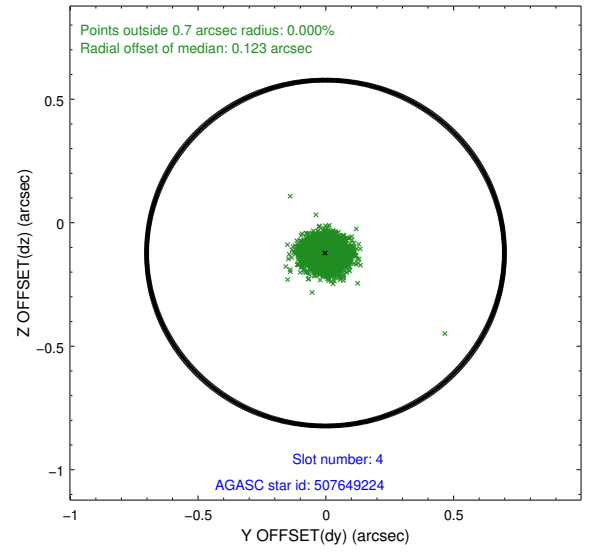
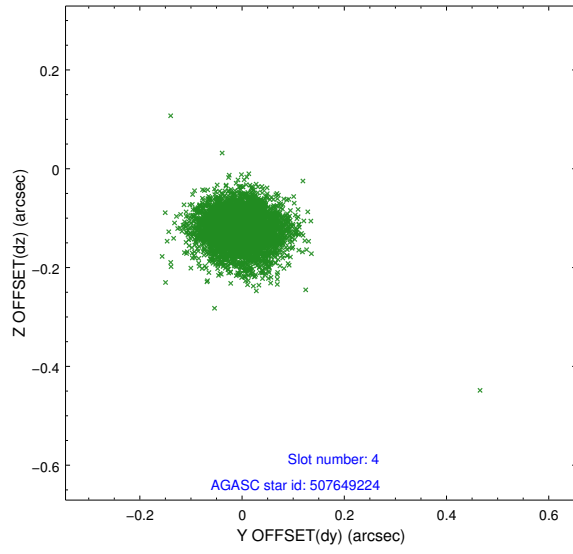
slot	status	id	mag	n_pts	med_dy	med_dz	dr1	dr2	ra	dec	mean_y	mean_z
0	FID	ACIS-S-2	6.94	1914	-0.112	-0.063	0.006	0.010	0.000000	0.000000	-767.60	-1736.09
1	FID	ACIS-S-4	7.02	1914	0.118	0.066	0.006	0.010	0.000000	0.000000	2145.60	171.74
2	FID	ACIS-S-6	7.16	1914	-0.033	0.005	0.007	0.011	0.000000	0.000000	395.42	809.91
3	GUIDE	507643616	7.00	3829	-0.152	0.103	0.056	0.093	237.319827	56.236371	1302.71	-1813.16
4	GUIDE	507649224	7.87	3829	-0.001	-0.123	0.061	0.096	235.610360	55.534923	-1374.81	1520.07
5	GUIDE	507655264	9.09	3825	0.013	-0.253	0.098	0.149	236.248481	55.599707	-1093.77	231.49
6	GUIDE	507656536	9.22	3825	0.163	0.049	0.095	0.156	236.948031	56.109821	807.38	-1094.03
7	GUIDE	507655064	6.77	3828	-0.019	0.226	0.054	0.086	236.372786	55.250933	-2336.62	-76.45

2.4 Star Slots

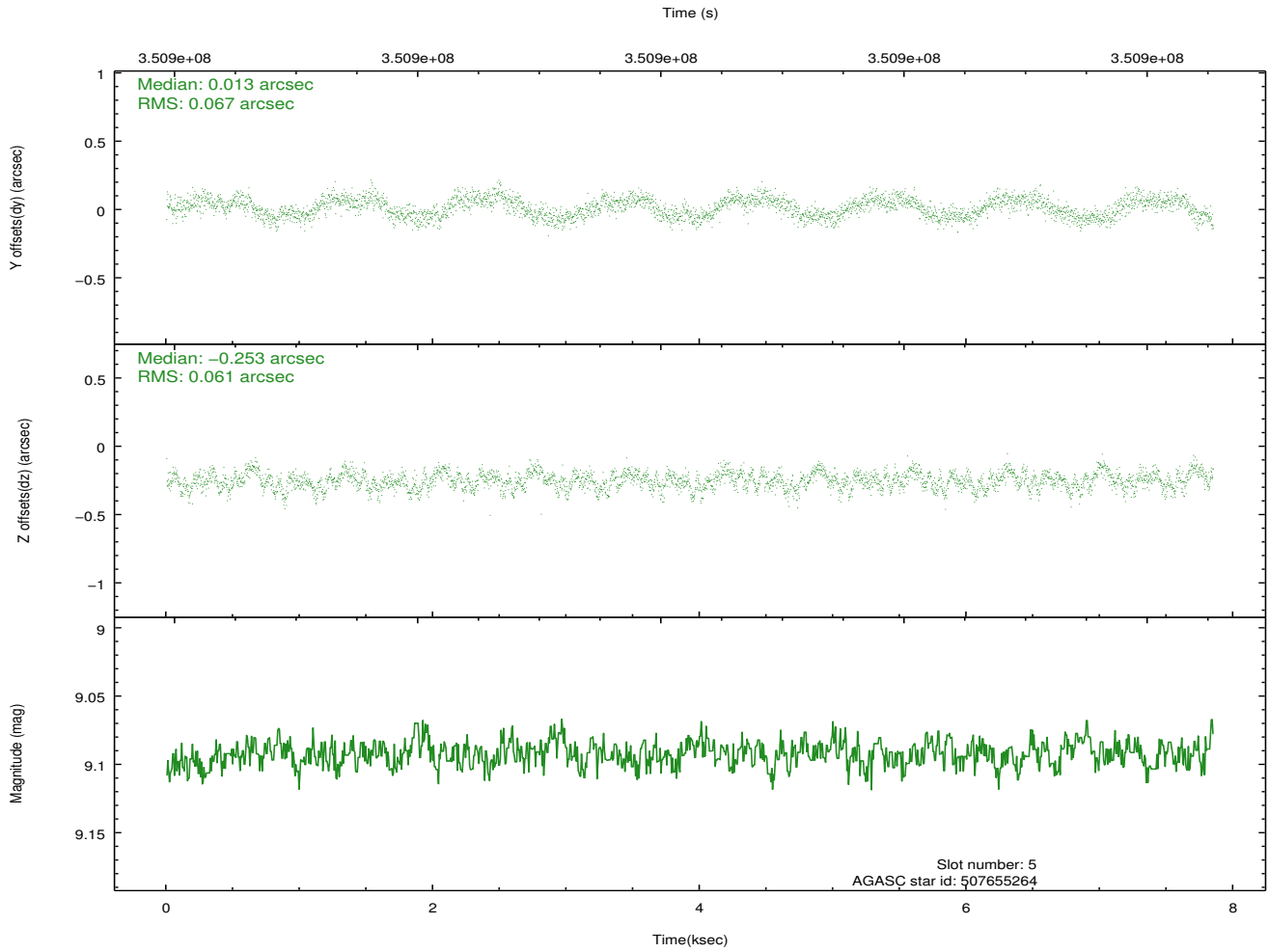
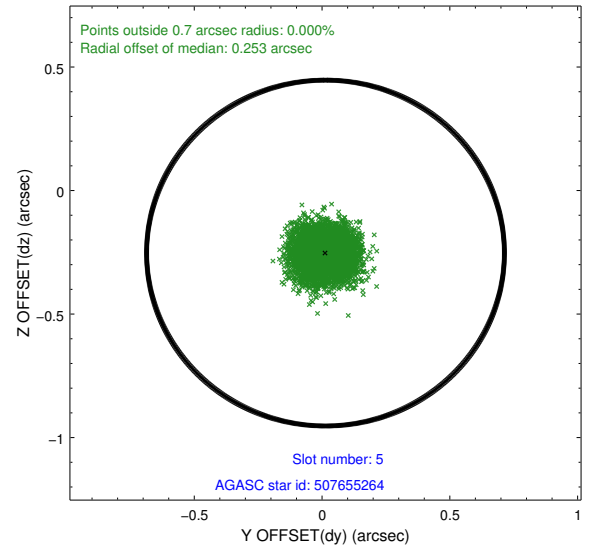
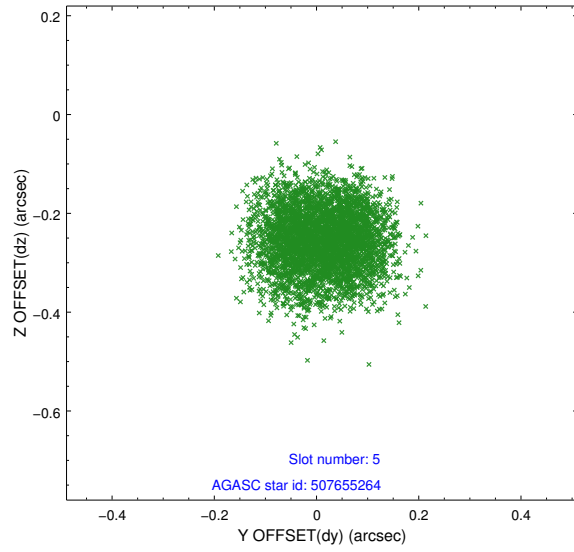
2.4.1 Slot 3



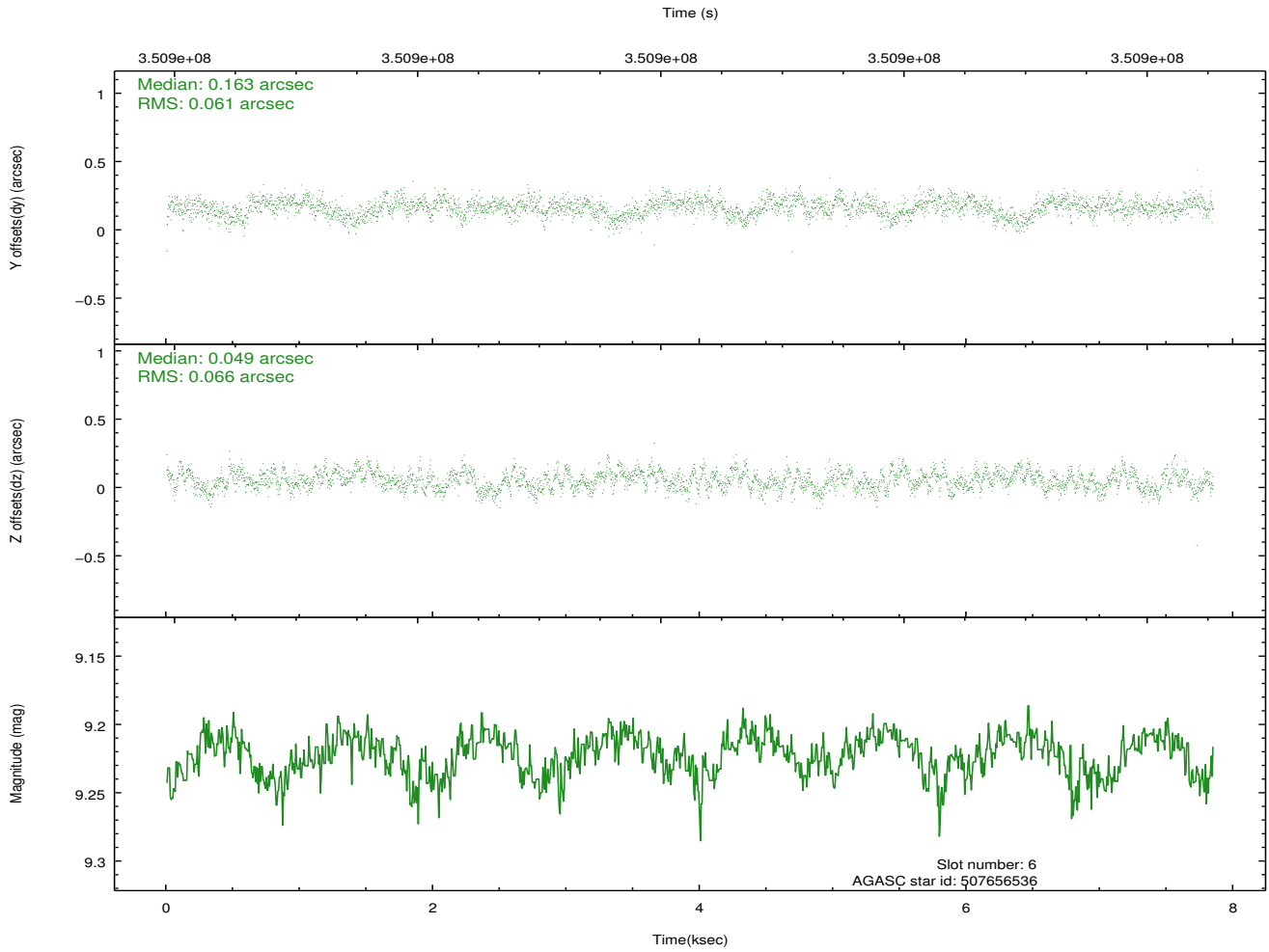
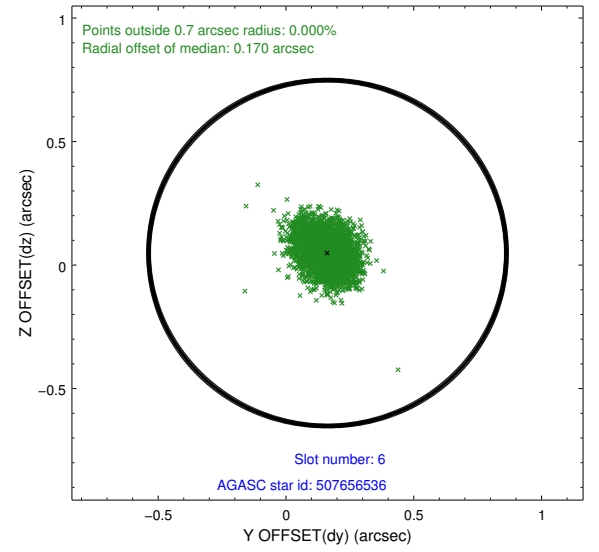
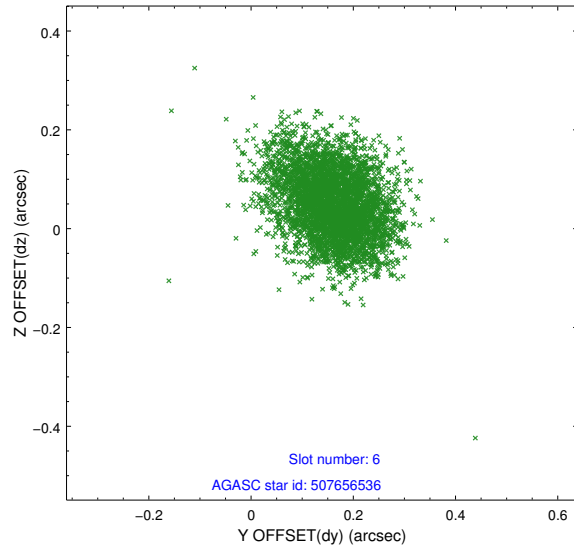
2.4.2 Slot 4



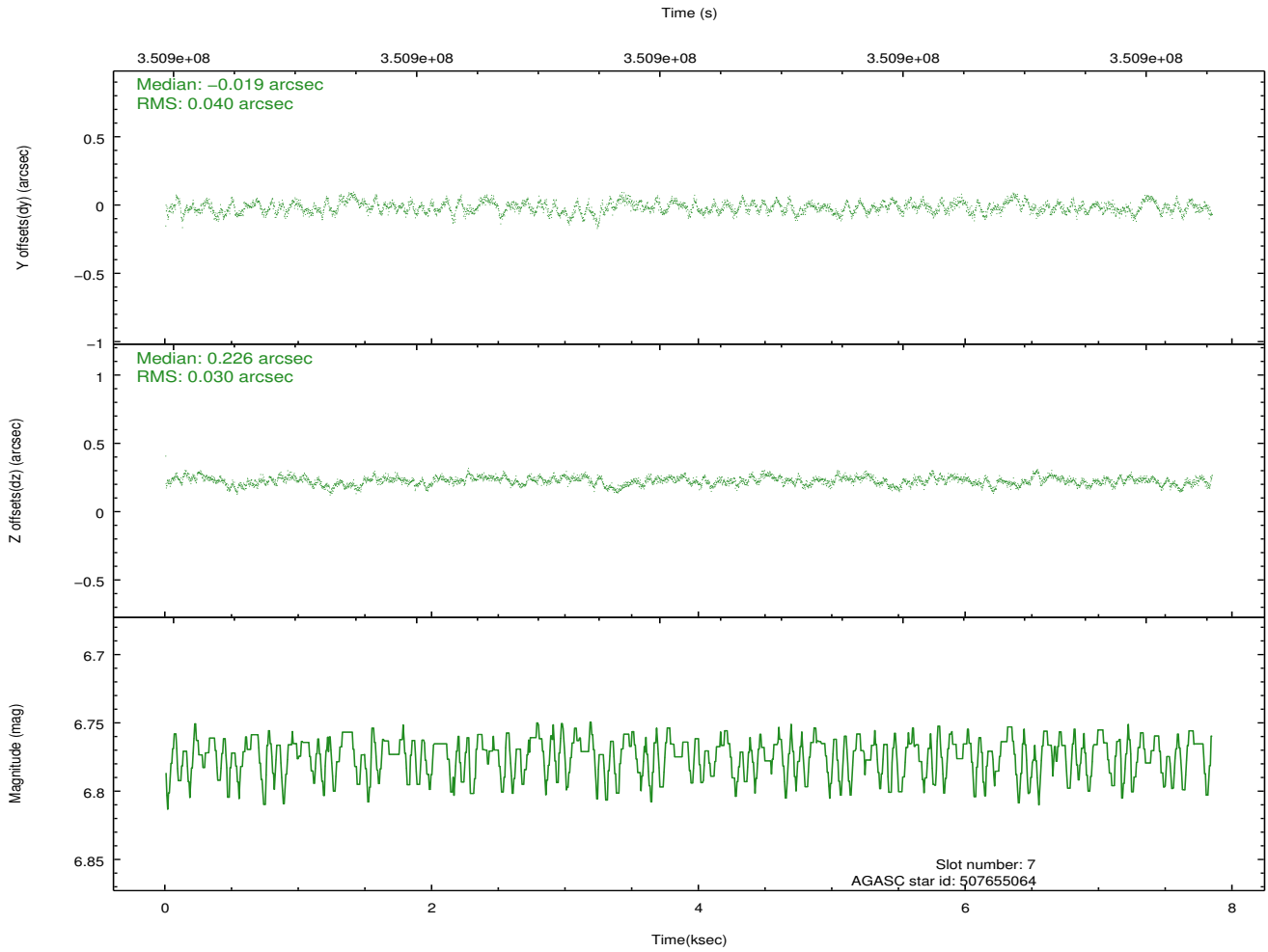
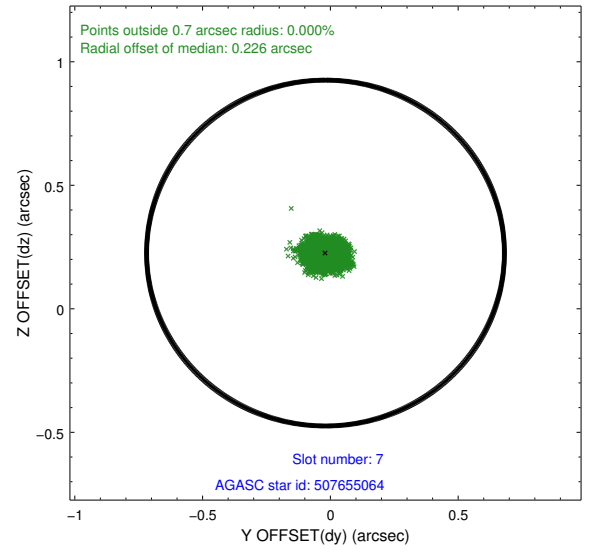
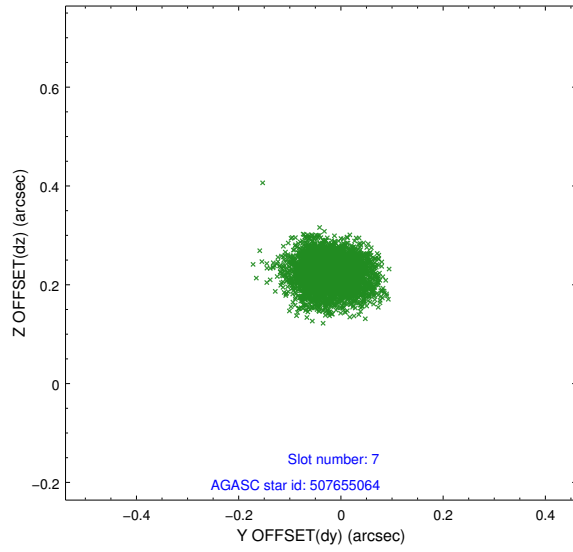
2.4.3 Slot 5



2.4.4 Slot 6

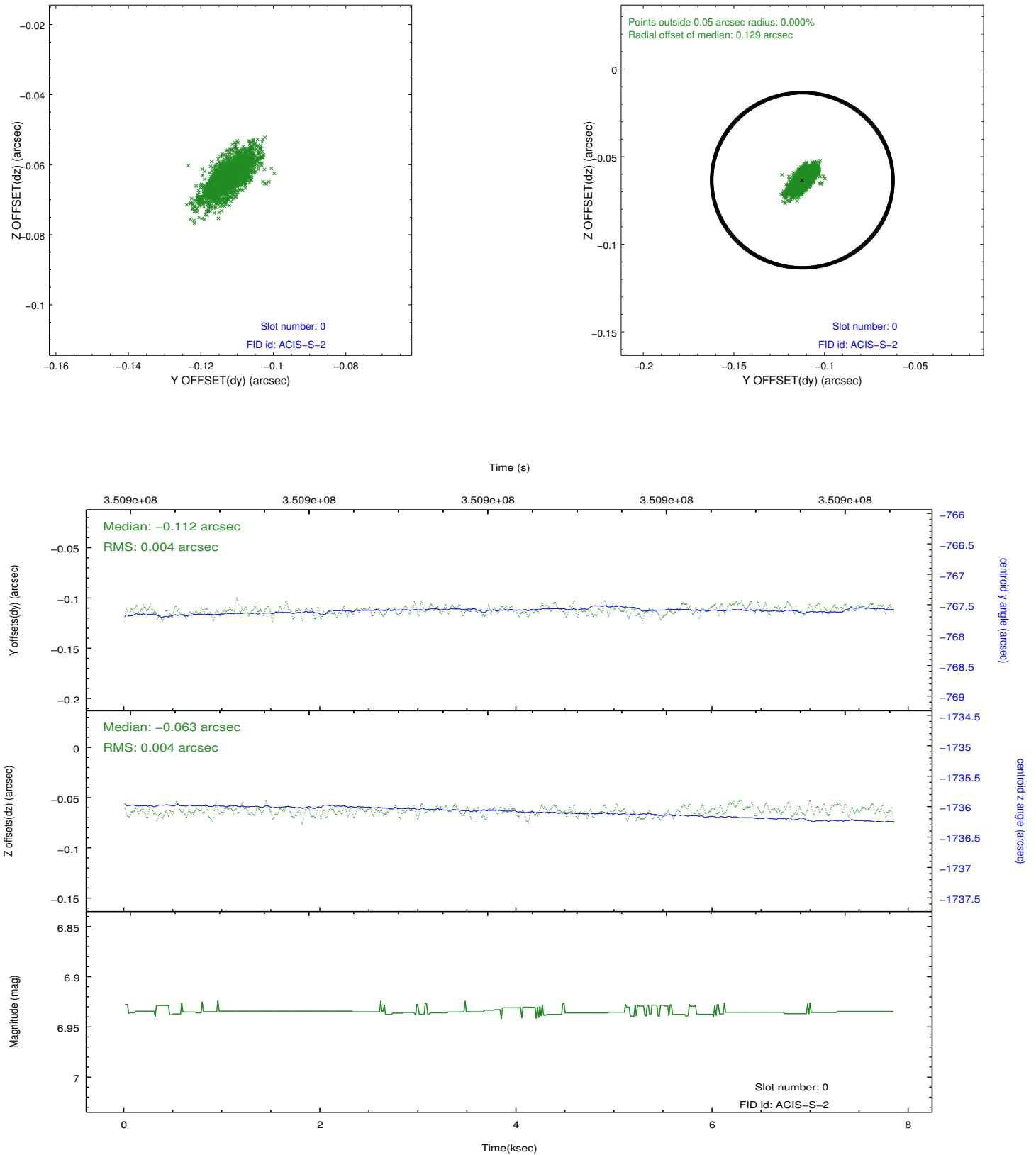


2.4.5 Slot 7

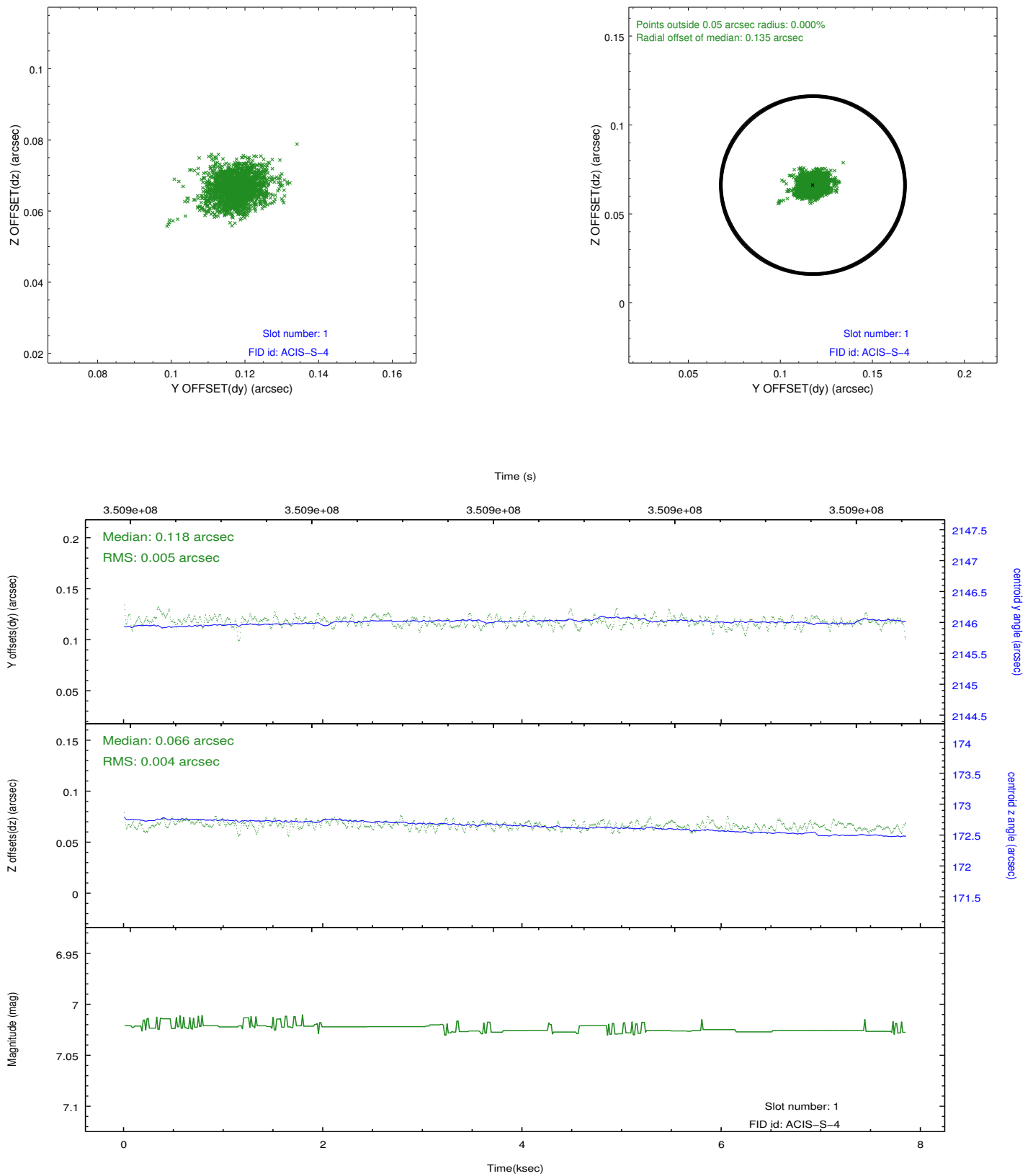


2.5 FID Slots

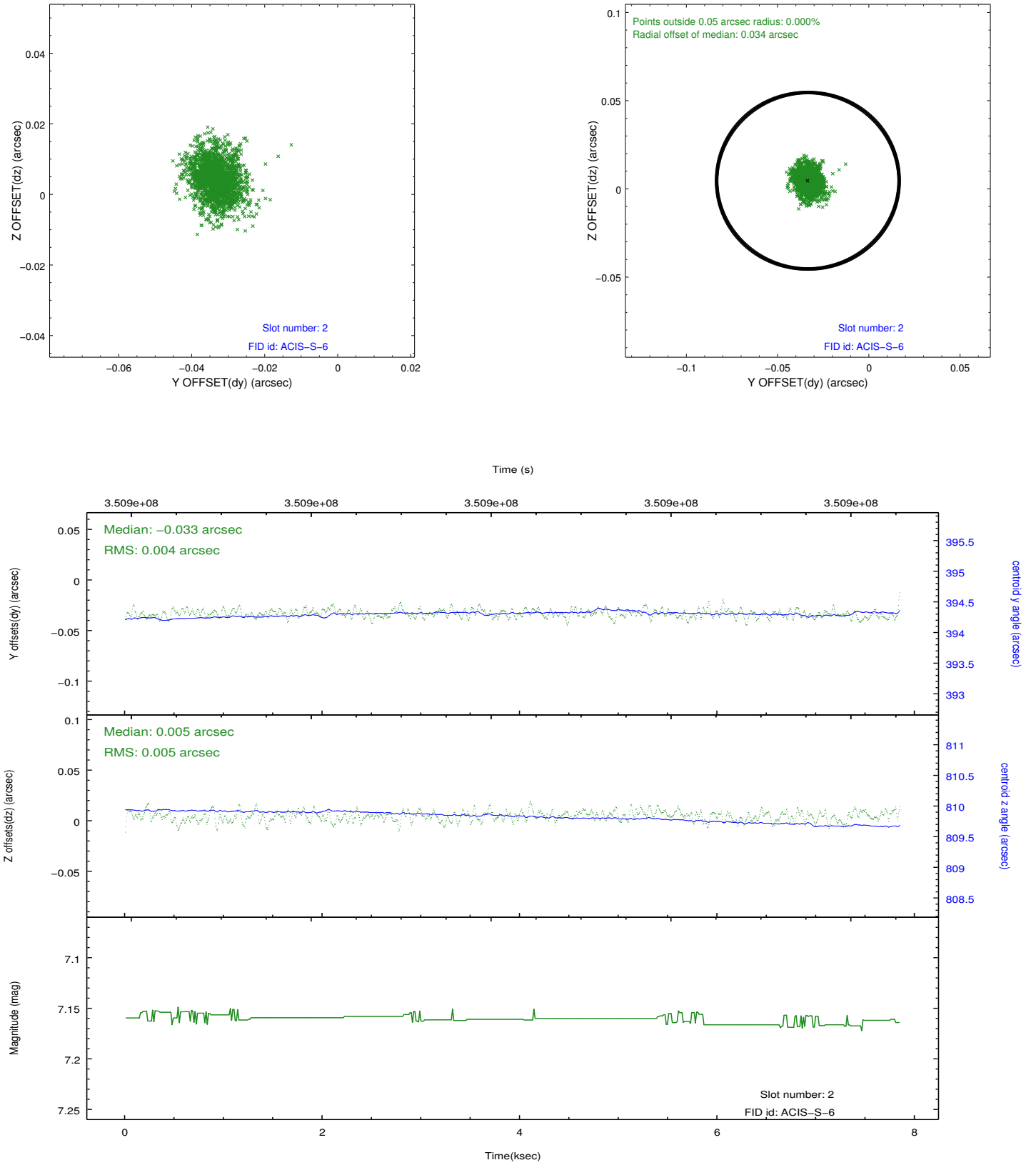
2.5.1 Slot 0



2.5.2 Slot 1



2.5.3 Slot 2



A Summary

A.1 Status

V&V Scientist	Joy Nichols
V&V Date (YYYY-MM-DD)	2012.06.05
V&V Edition	1
V&V Disposition and Status	OK
V&V Charge Time	7.45279997

A.2 Comments