

V&V Reference Report

L2 ASCDS Version : 8.4.5

Observation 97 - L2 Version 4
Chandra X-Ray Center

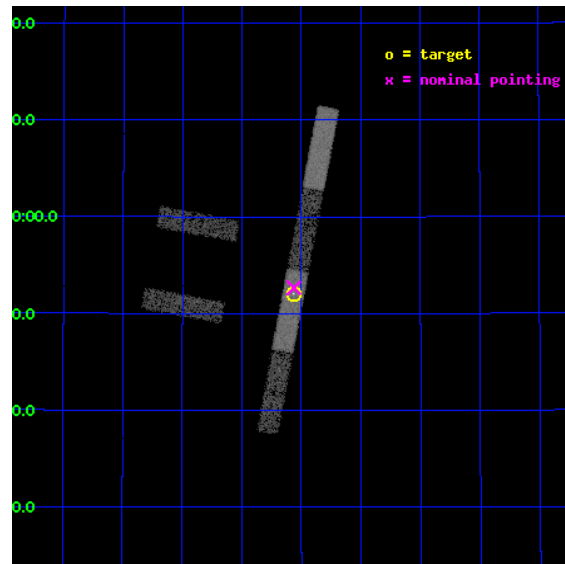
L2 Processing Date : Aug 25 2012

Contents

1	Front	2
2	OBI	3
2.1	OBI	3
2.1.1	Images	3
2.1.2	Bias	3
2.1.3	Parameters	4
2.1.4	Events	4
2.2	Compared Parameters	5
2.3	Aspect	6
2.4	Star Slots	9
2.4.1	Slot 3	9
2.4.2	Slot 4	10
2.4.3	Slot 5	11
2.4.4	Slot 6	12
2.4.5	Slot 7	13
2.5	FID Slots	14
2.5.1	Slot 0	14
2.5.2	Slot 1	15
2.5.3	Slot 2	16
A	Summary	17
A.1	Status	17
A.2	Comments	17

1 Front

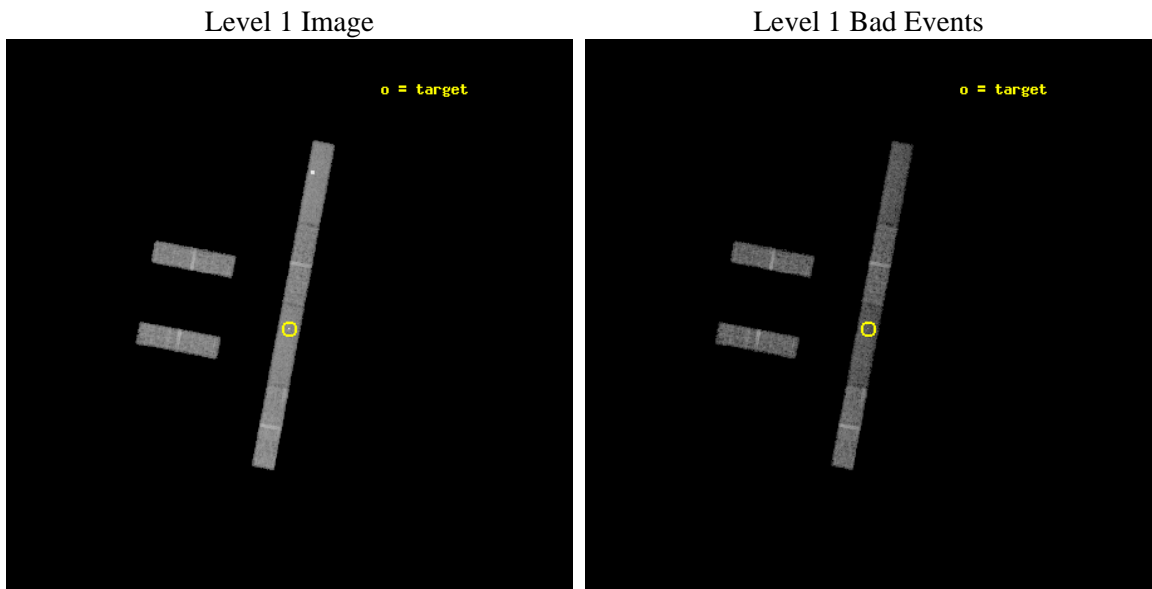
seq_num	400010	Sequence number
obs_id	97	Observation id
title	BLACK HOLE EVENT HORIZONS	Proposal title
observer	Dr. Stephen Murray	Principal investigator
object	V404 CYG	Source name
dtcycle	0	
cycle	P	events from which exps? Prim/Second/Both
ra_targ	306.015833	Observer's specified target RA [deg]
dec_targ	33.867806	Observer's specified target Dec [deg]
ra_nom	306.01579573384	Nominal RA [deg]
dec_nom	33.877789373741	Nominal Dec [deg]
roll_nom	100.77576260199	Nominal Roll [deg]
revision	4	Processing version of data
ontime	10679.89994213	Sum of GTIs [s]
livetime	10295.77397492	Livetime [s]
ontime2	10679.89994213	Sum of GTIs [s]
ontime3	10679.89994213	Sum of GTIs [s]
ontime5	10679.89994213	Sum of GTIs [s]
ontime6	10679.89994213	Sum of GTIs [s]
ontime7	10679.89994213	Sum of GTIs [s]
ontime8	10679.89994213	Sum of GTIs [s]
l2events	31496	Number of level 2 events



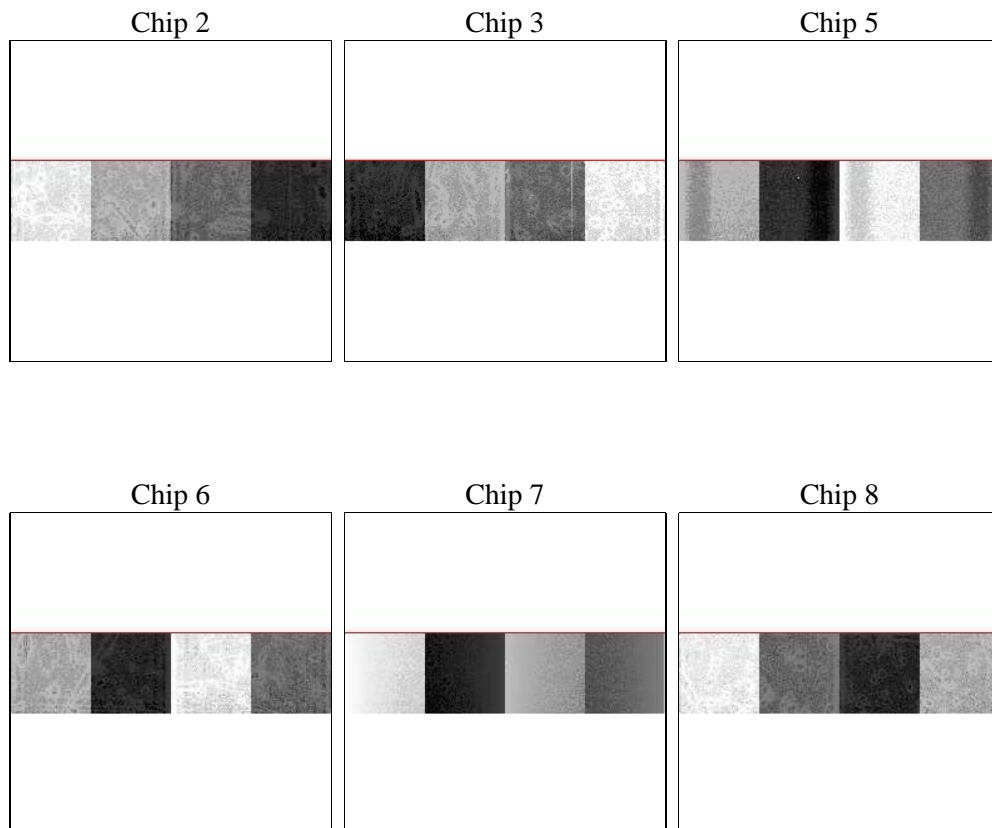
2 OBI

2.1 OBI

2.1.1 Images



2.1.2 Bias



2.1.3 Parameters

obi_num	0	Obi number	sched_exp_time	10200.000000	[s] Scheduled observation exposure time
ascdsver	8.4.5	Processing system revision	ontime	10679.89994213	Sum of GTIs [s]
caldbver	4.5.1.1	 	ontime2	10679.89994213	Sum of GTIs [s]
date	2012-08-25T20:51:54	Date and time of file creation	ontime3	10679.89994213	Sum of GTIs [s]
revision	4	Processing version of data	ontime5	10679.89994213	Sum of GTIs [s]
			ontime6	10679.89994213	Sum of GTIs [s]
			ontime7	10679.89994213	Sum of GTIs [s]
			ontime8	10679.89994213	Sum of GTIs [s]
			l1events	171792	Number of level 1 events

2.1.4 Events

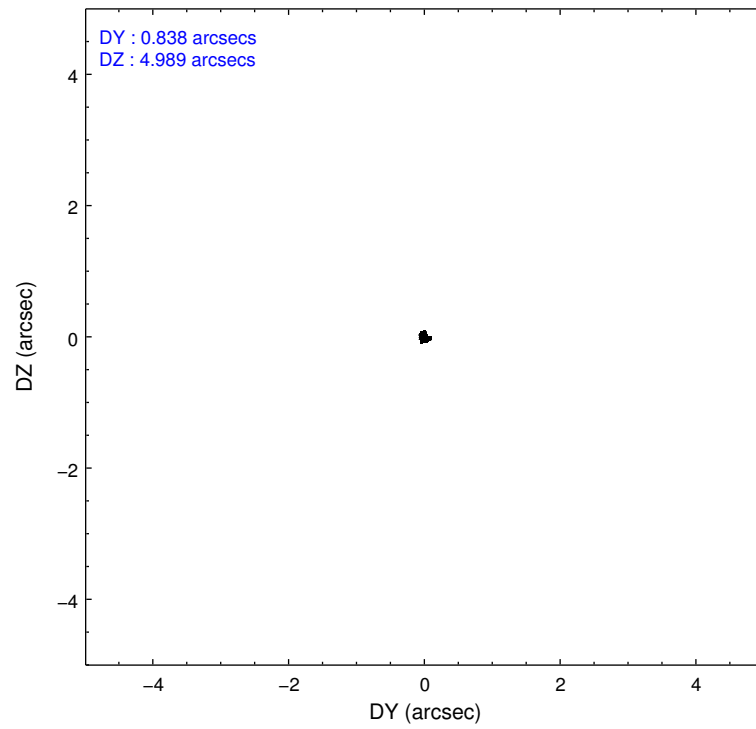
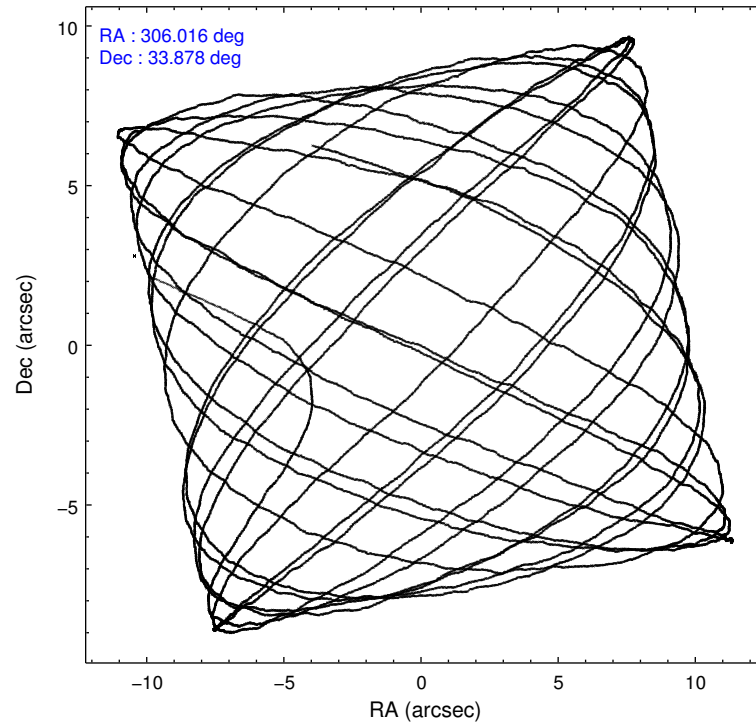
	ccd 2	ccd 3	ccd 5	ccd 6	ccd 7	ccd 8		ccd 2	ccd 3	ccd 5	ccd 6	ccd 7	ccd 8
level 1 events	25618	26218	33271	24378	26942	35365	grade 0 events	931	965	8233	881	1590	1588
rejected events	23224	23790	14341	21958	14531	29828		3%	3%	24%	3%	5%	4%
rejected %	90%	90%	43%	90%	53%	84%	grade 1 events	3	4	46	5	30	8
								0%	0%	0%	0%	0%	0%
							grade 2 events	416	407	3545	407	2668	1156
								1%	1%	10%	1%	9%	3%
							grade 3 events	366	368	779	381	1360	663
								1%	1%	2%	1%	5%	1%
							grade 4 events	352	355	728	371	1330	668
								1%	1%	2%	1%	4%	1%
							grade 5 events	642	628	2191	739	2386	1024
								2%	2%	6%	3%	8%	2%
							grade 6 events	381	387	6030	428	5718	1530
								1%	1%	18%	1%	21%	4%
							grade 7 events	22527	23104	11719	21166	11860	28728
								87%	88%	35%	86%	44%	81%

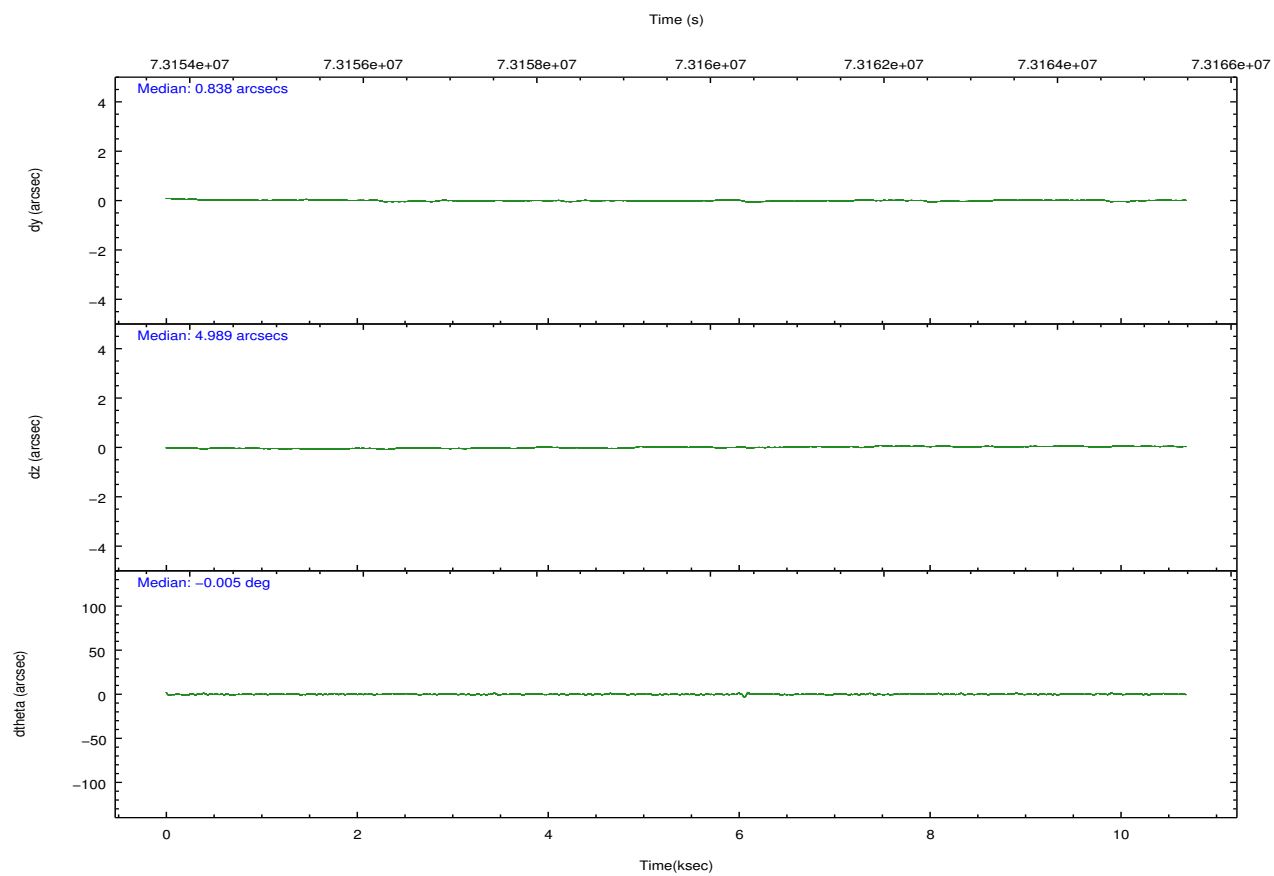
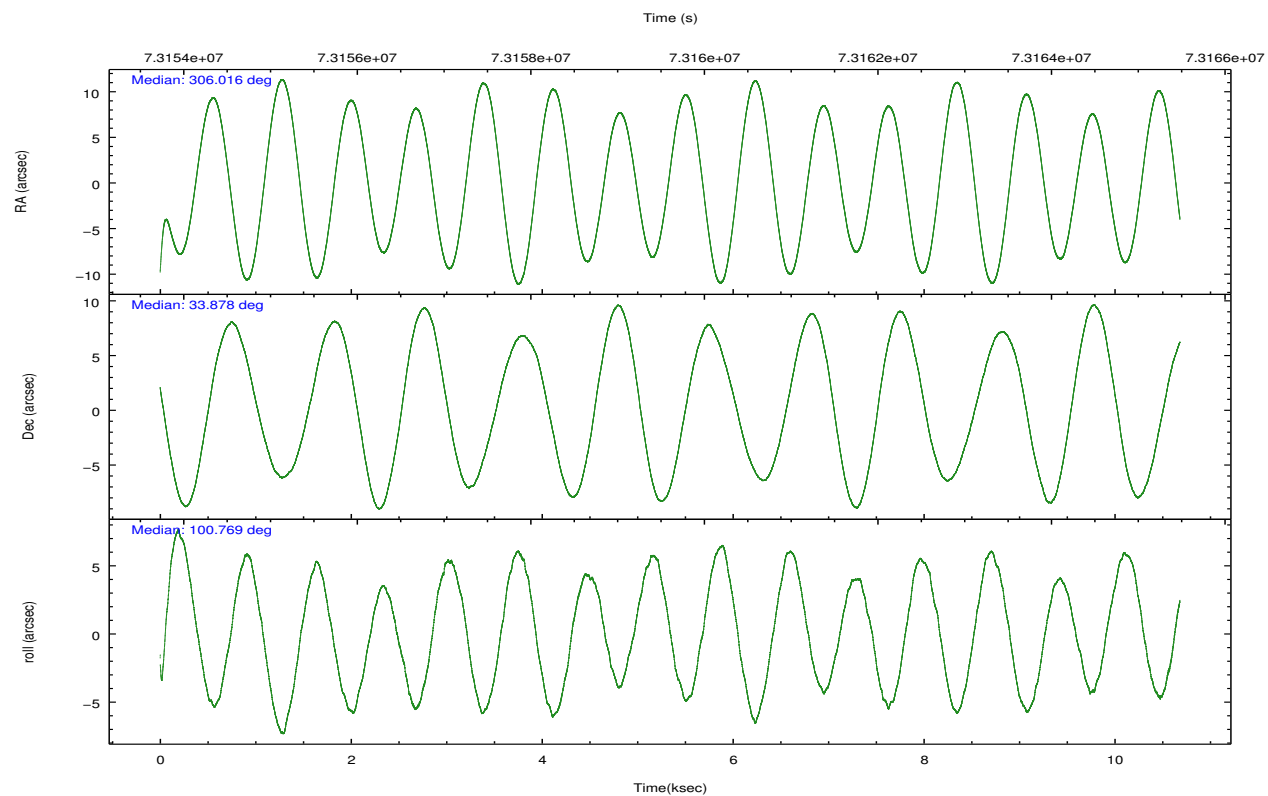
2.2 Compared Parameters

Parameter	Planned	Actual
Instrument	ACIS	ACIS
Detector	ACIS-235678	ACIS-235678
Grating	NONE	NONE
Data mode	FAINT	FAINT
Observation mode	POINTING	POINTING
[deg] Pointing RA	306.037446	306.0157957338375
[deg] Pointing Dec	33.857101	33.87778937374102
[deg] Pointing Roll	100.607082	100.7757626019941
[mm] SIM focus pos	-0.684267	-0.6828225247311905
[mm] SIM defocus	0	0.001444936568705701
[mm] SIM translation stage pos	-190.132523	-190.1400660498719
[mm] SIM translation stage offset	0	0.00754346686406393
[s] Observation start time (MET)	73154744.184000	73153546.757164
Observation start date	2000-04-26T16:44:40	2000-04-26T16:25:46
[s] Observation end time (MET)	73164944.184000	73165878.020117
Observation end date	2000-04-26T19:34:40	2000-04-26T19:51:18
Read mode	TIMED	TIMED

Parameter	Planned	Actual
Obspar format version number	7	7
Obspar file type	PREDICTED	ACTUAL
Obspar update status	NONE	UPDATED
Number of optional ACIS chips dropped	0	0
On-chip summing requested	N	N
Subarray requested	CUSTOM	1/4
Subarray start row	385	385
Subarray row count	256	256
Alternating exposures requested	N	N
[s] Primary exposure time	0.000000	1.1

2.3 Aspect



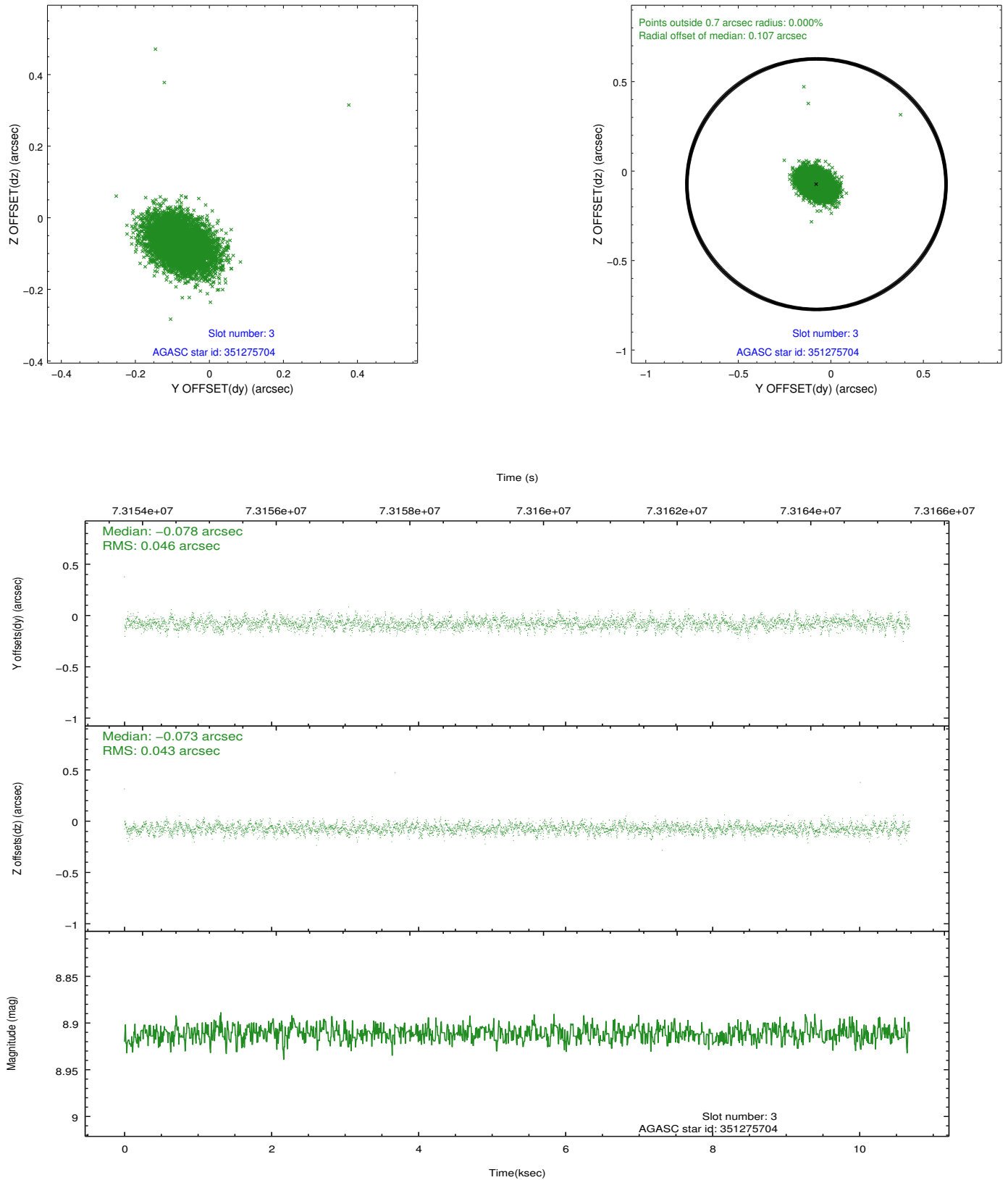


Slot Statistics

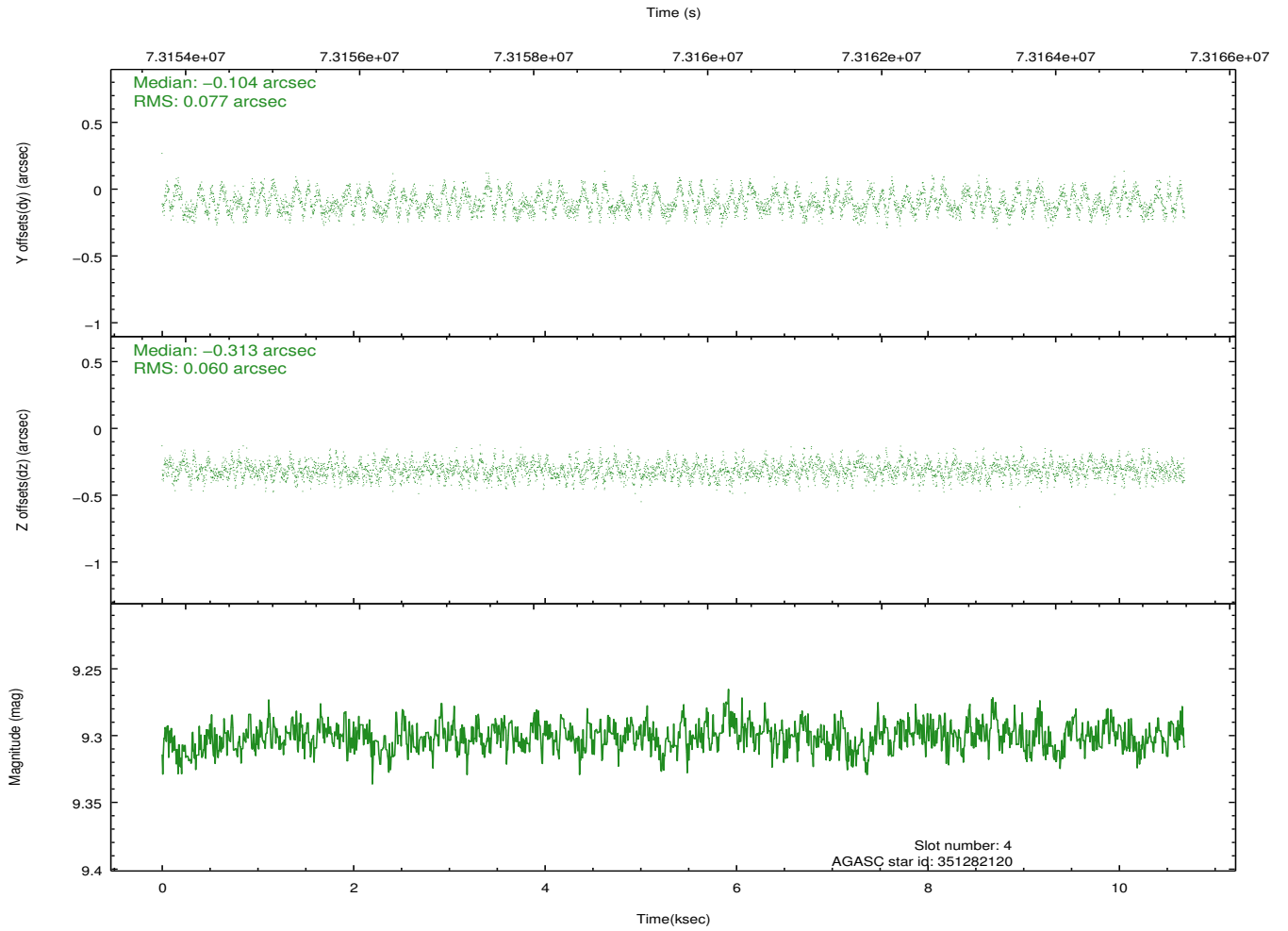
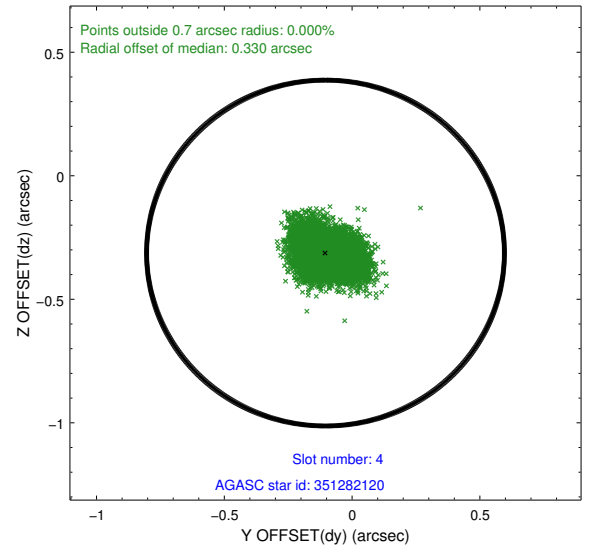
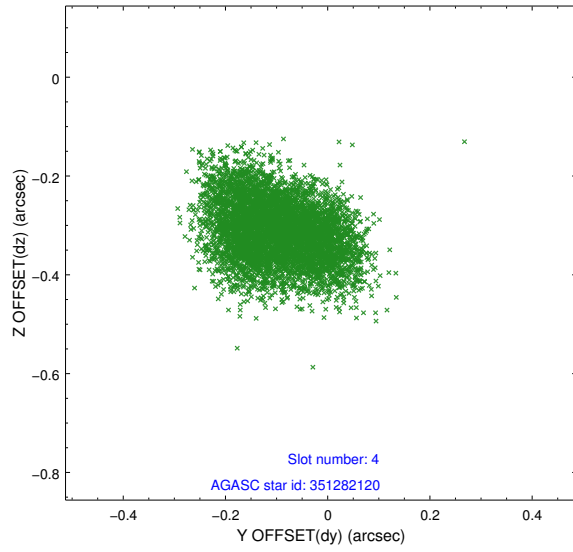
slot	status	id	mag	n_pts	med_dy	med_dz	dr1	dr2	ra	dec	mean_y	mean_z
0	FID	ACIS-S-1	7.19	2605	-0.026	0.013	0.006	0.011	0.000000	0.000000	942.57	-1721.72
1	FID	ACIS-S-5	7.24	2605	-0.006	-0.015	0.006	0.010	0.000000	0.000000	-1806.11	175.34
2	FID	ACIS-S-6	7.35	2606	0.010	0.014	0.007	0.012	0.000000	0.000000	407.67	819.85
3	GUIDE	351275704	8.91	5209	-0.078	-0.073	0.065	0.109	305.844848	34.142436	1116.04	375.54
4	GUIDE	351282120	9.30	5210	-0.104	-0.313	0.106	0.163	305.232648	33.763598	121.90	2428.06
5	GUIDE	352455408	9.66	5212	0.128	0.168	0.094	0.152	306.718540	33.516003	-1575.97	-1783.50
6	GUIDE	351273128	9.83	5204	-0.119	-0.046	0.093	0.154	305.664807	34.165412	1297.09	886.73
7	GUIDE	352454848	9.72	5207	0.167	0.260	0.084	0.137	306.645122	33.503369	-1581.26	-1558.75

2.4 Star Slots

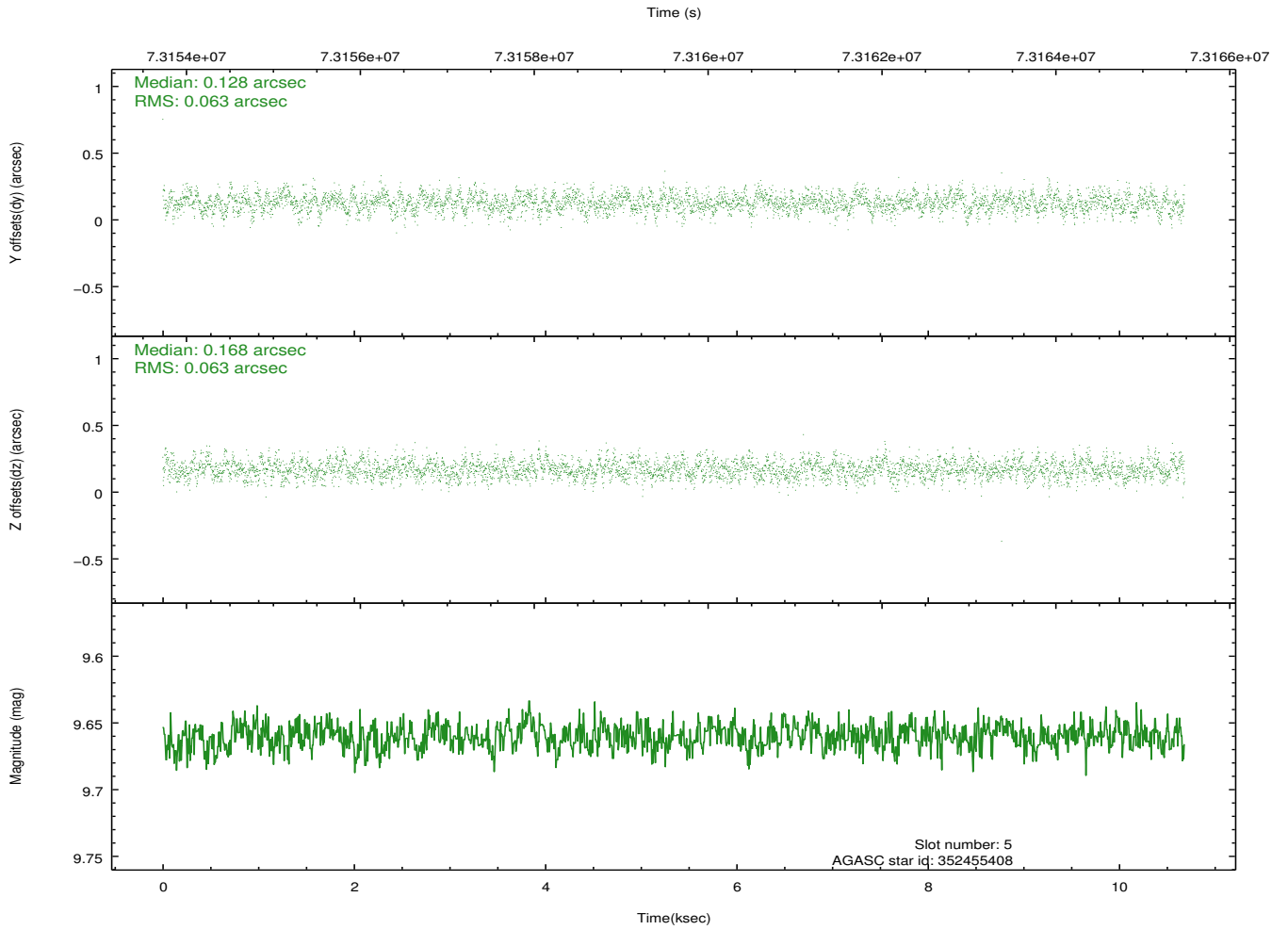
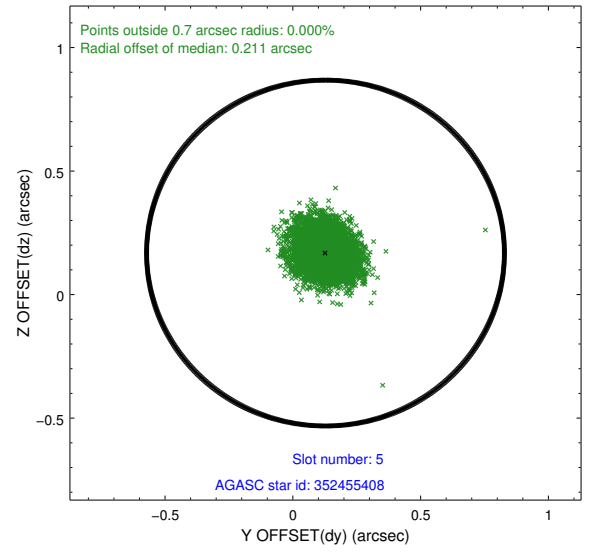
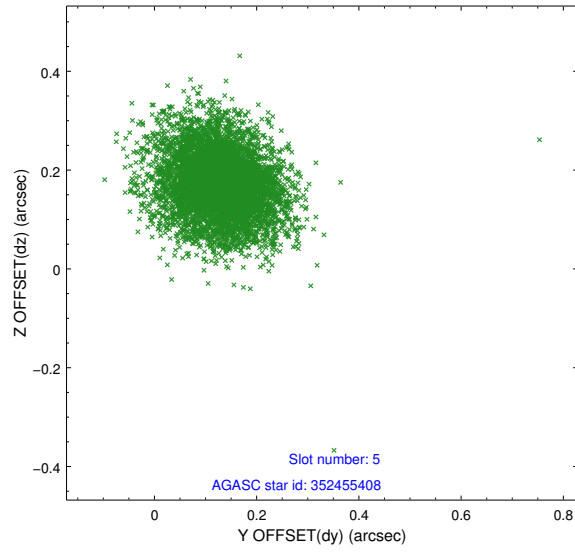
2.4.1 Slot 3



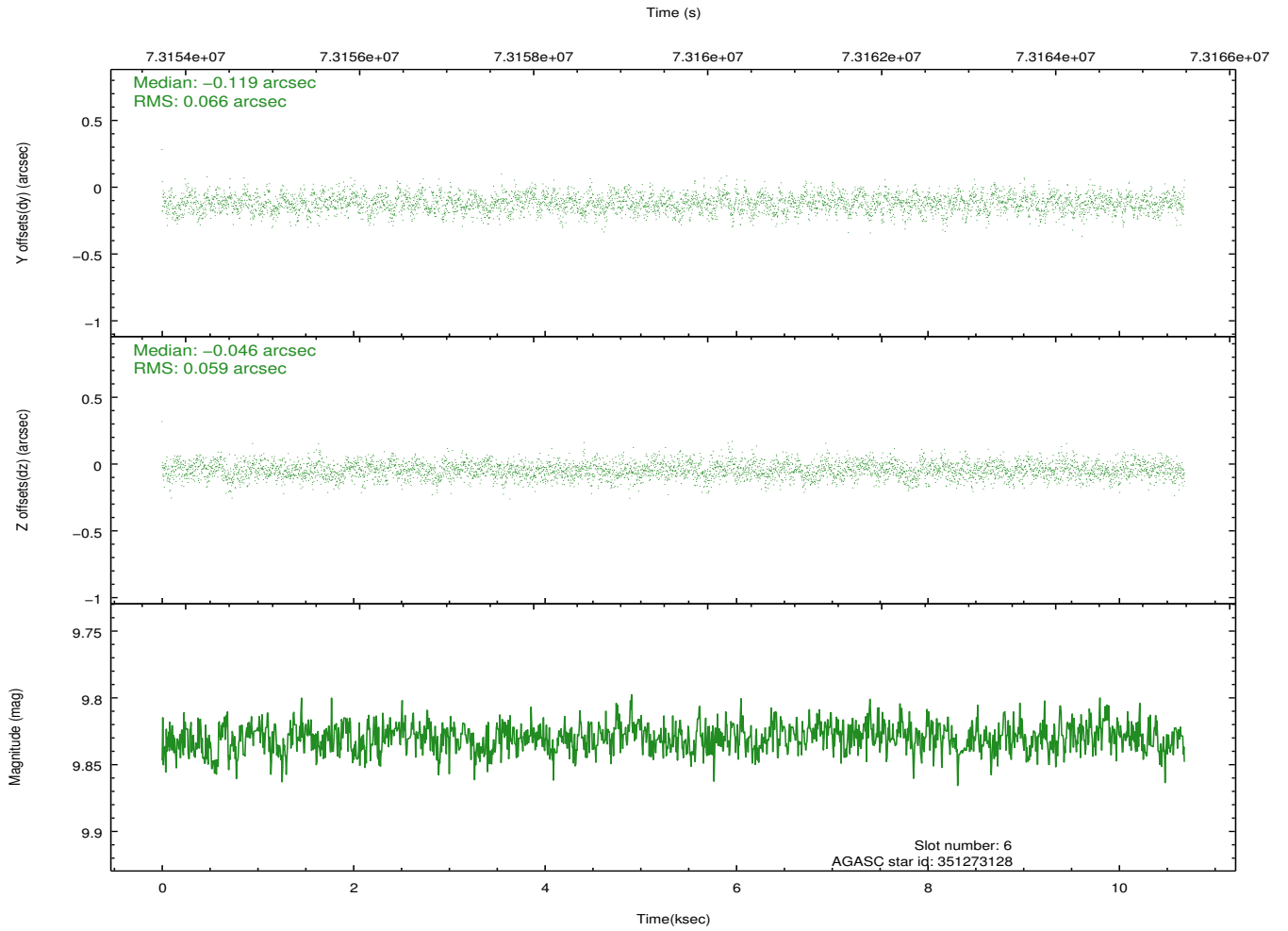
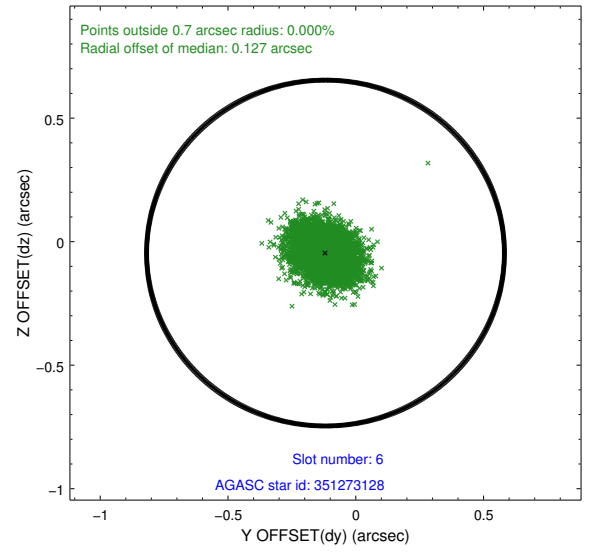
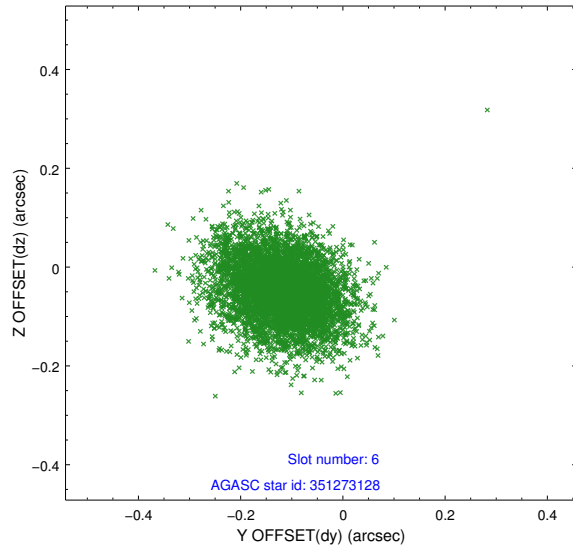
2.4.2 Slot 4



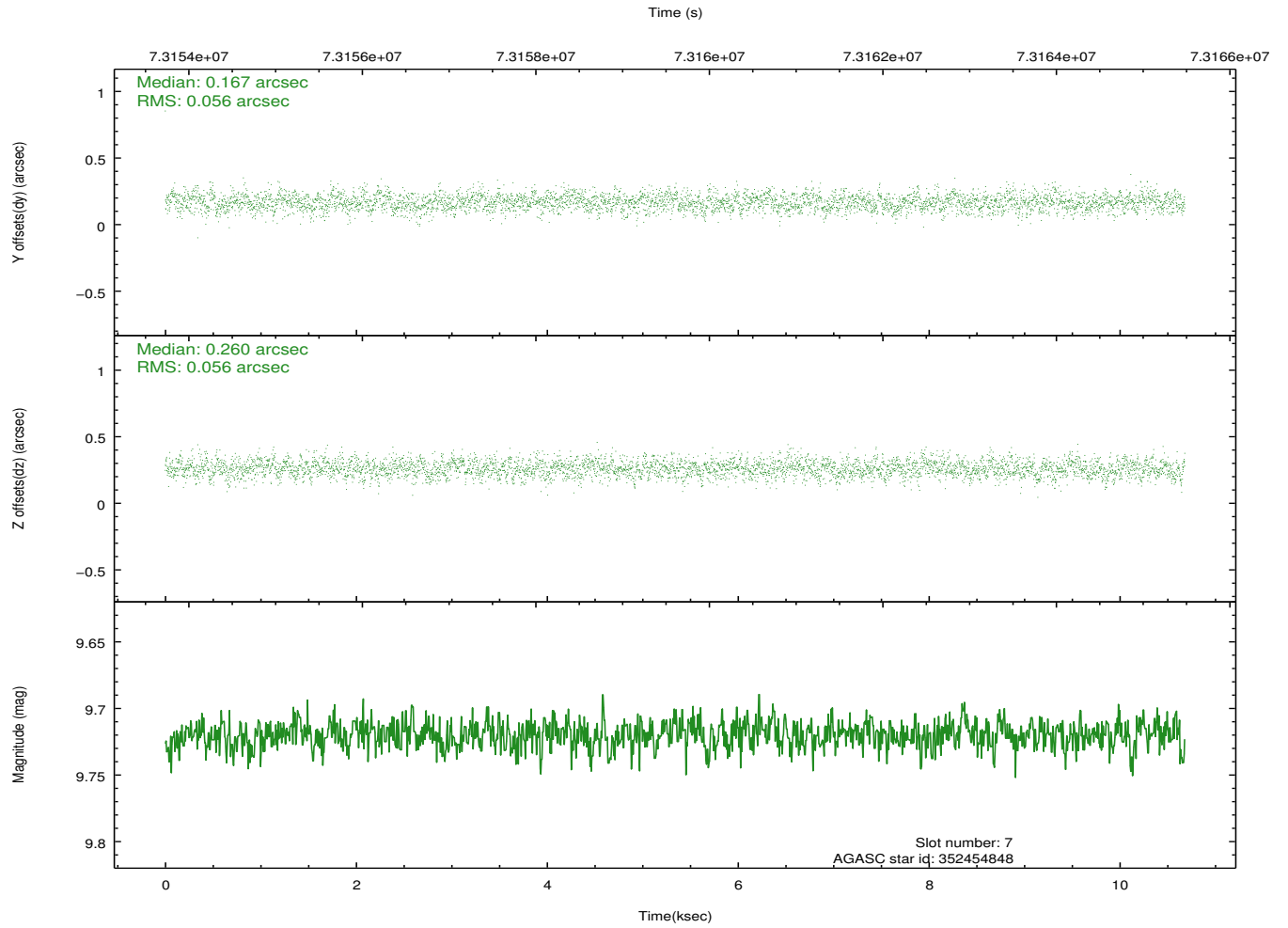
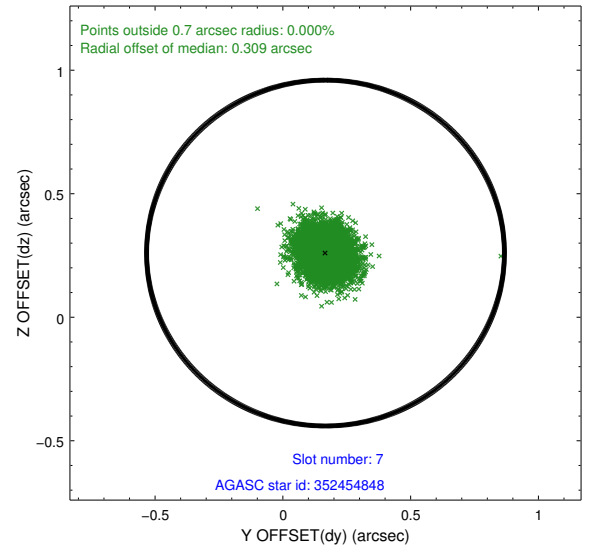
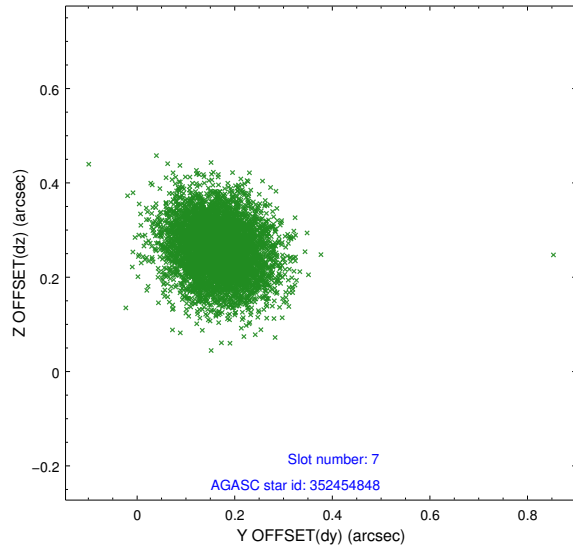
2.4.3 Slot 5



2.4.4 Slot 6

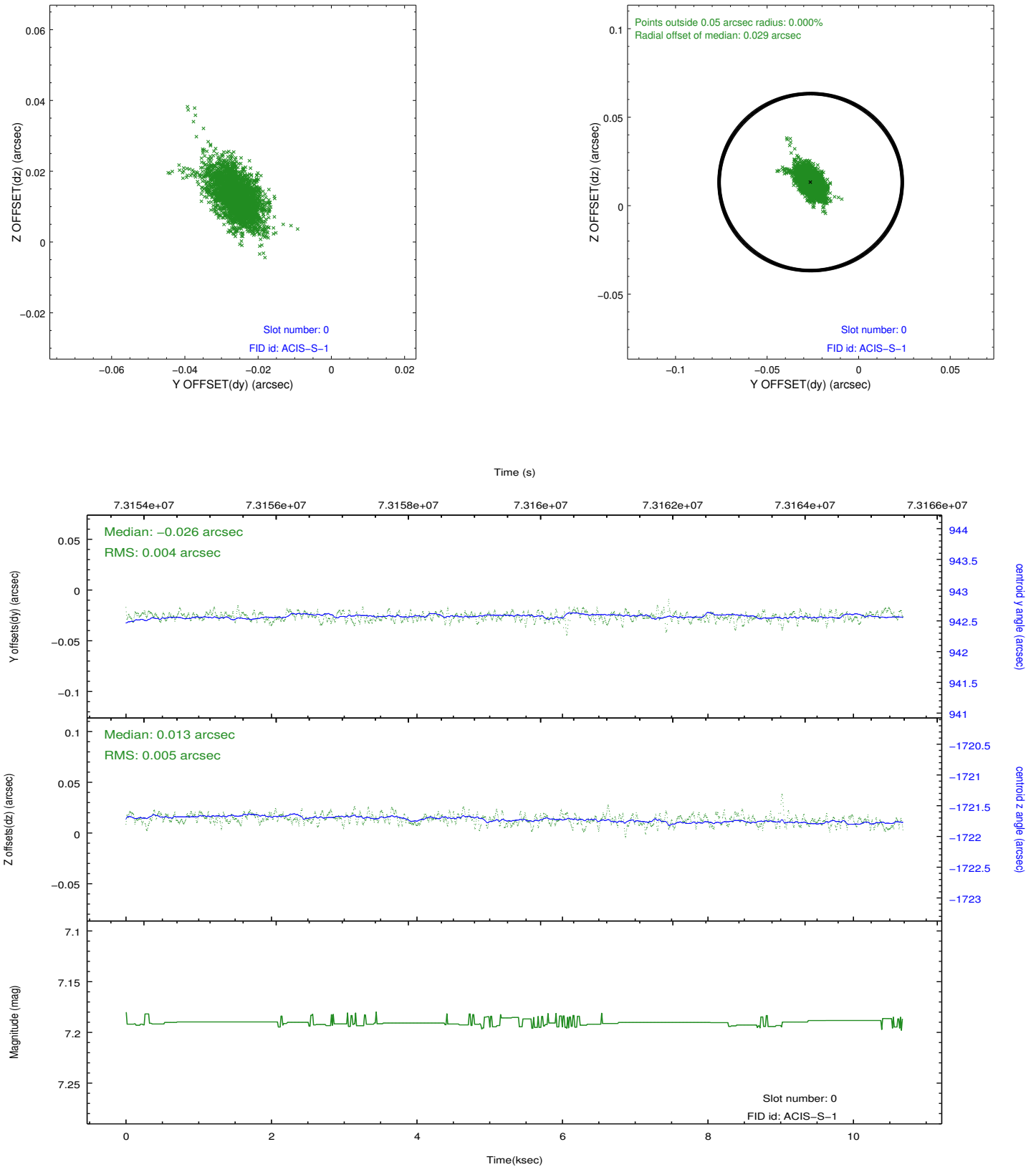


2.4.5 Slot 7

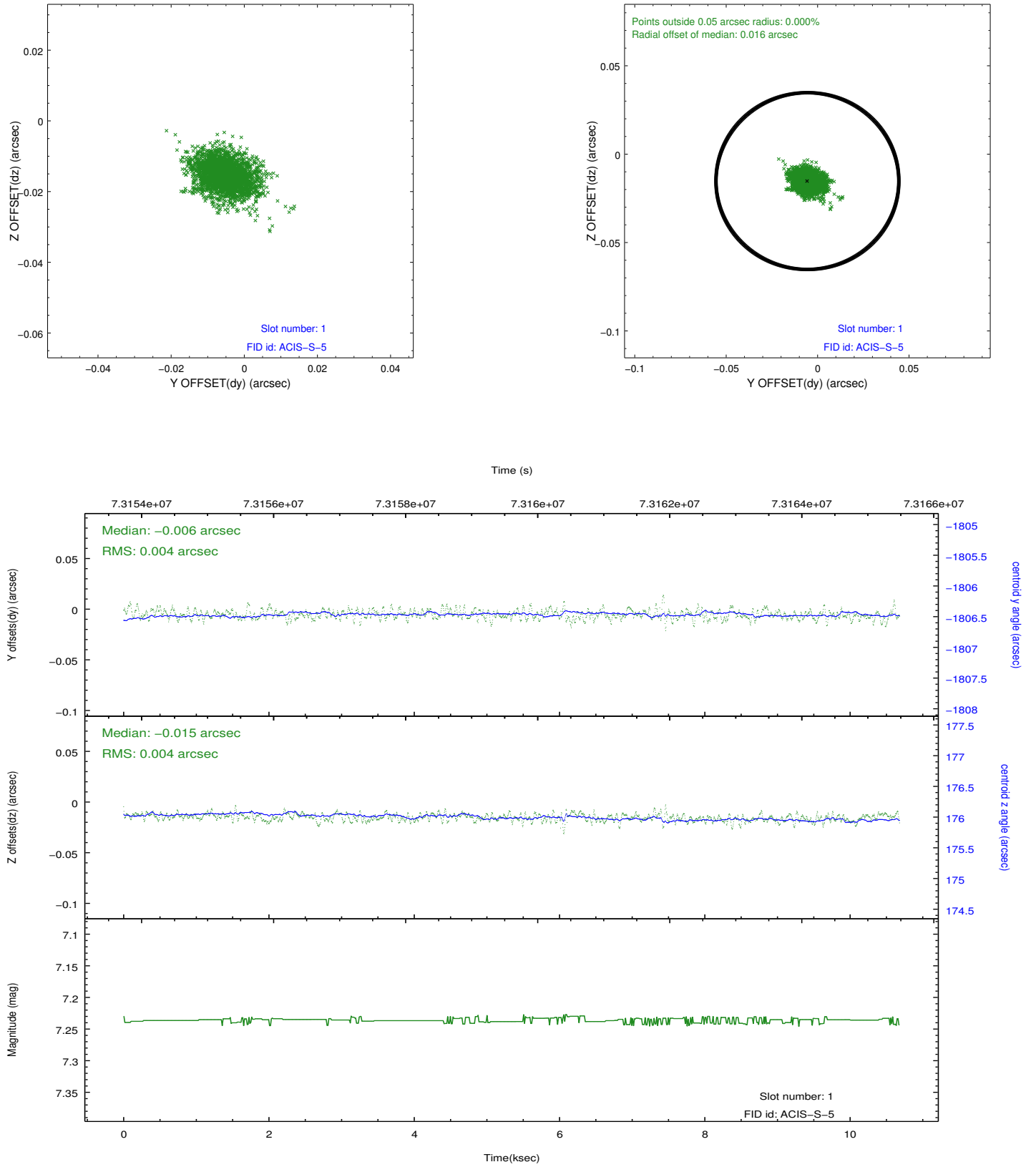


2.5 FID Slots

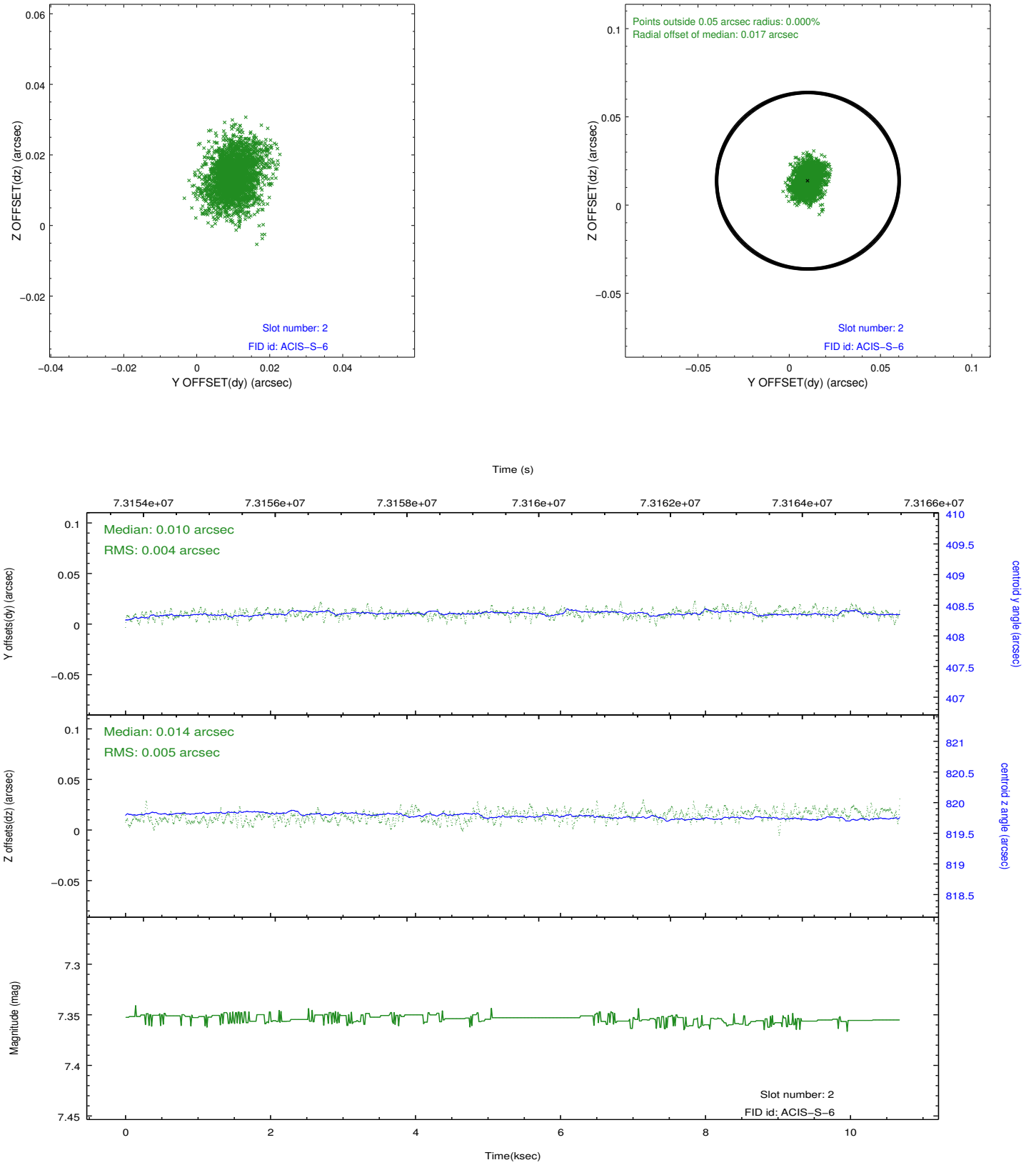
2.5.1 Slot 0



2.5.2 Slot 1



2.5.3 Slot 2



A Summary

A.1 Status

V&V Scientist	Jen Lauer
V&V Date (YYYY-MM-DD)	2012.08.28
V&V Edition	1
V&V Disposition and Status	OK
V&V Charge Time	10.679

A.2 Comments