

V&V Reference Report

L2 ASCDS Version : 8.4.4

Observation 9427 - L2 Version 2
Chandra X-Ray Center

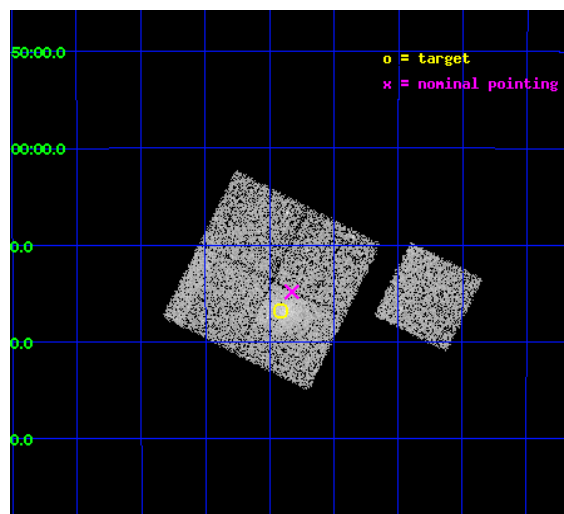
L2 Processing Date : May 17 2012

Contents

1	Front	2
2	OBI	3
2.1	OBI	3
2.1.1	Images	3
2.1.2	Bias	3
2.1.3	Parameters	4
2.1.4	Events	4
2.2	Compared Parameters	5
2.3	Aspect	6
2.4	Star Slots	9
2.4.1	Slot 3	9
2.4.2	Slot 4	10
2.4.3	Slot 5	11
2.4.4	Slot 6	12
2.4.5	Slot 7	13
2.5	FID Slots	14
2.5.1	Slot 0	14
2.5.2	Slot 1	15
2.5.3	Slot 2	16
A	Summary	17
A.1	Status	17
A.2	Comments	17

1 Front

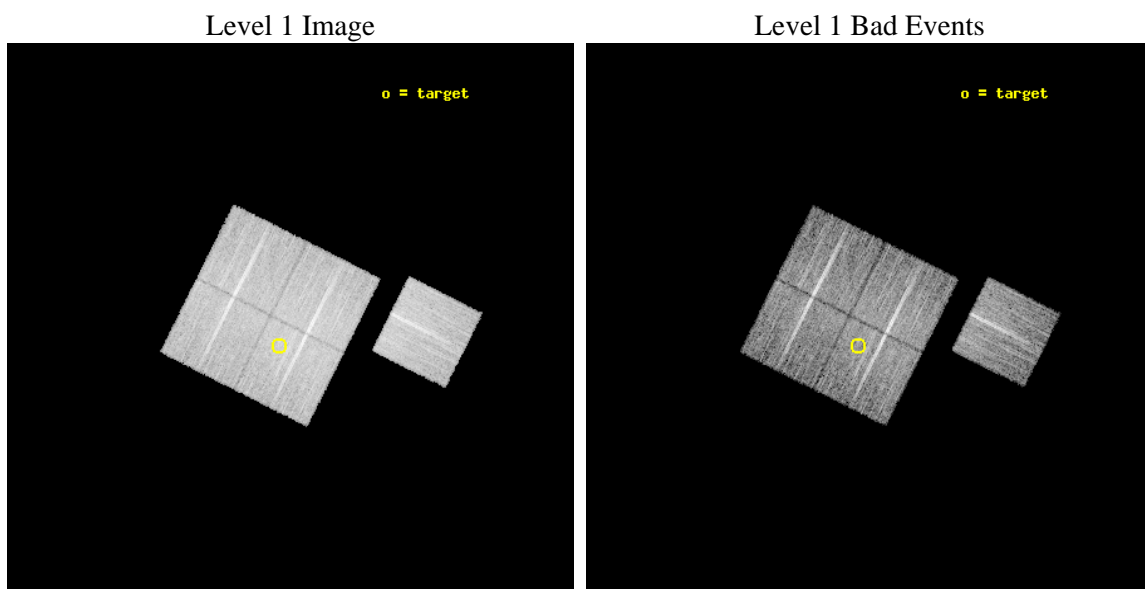
seq_num	800763	Sequence number
obs_id	9427	Observation id
title	SCALING RELATIONS FOR LOW-MASS GALAXY CLUSTERS AND GROUPS	Proposal
observer	Dr. Alexey Vikhlinin	Principal investigator
object	cl0057-2616	Source name
dtcycle	0	
cycle	P	events from which exps? Prim/Second/Both
ra_targ	14.352917	Observer's specified target RA [deg]
dec_targ	-26.280278	Observer's specified target Dec [deg]
ra_nom	14.331771774249	Nominal RA [deg]
dec_nom	-26.24760119144	Nominal Dec [deg]
roll_nom	116.63931353543	Nominal Roll [deg]
revision	2	Processing version of data
ontime	10118.40007782	Sum of GTIs [s]
livetime	9986.1957317453	Livetime [s]
ontime0	10112.118097305	Sum of GTIs [s]
ontime1	10115.259107471	Sum of GTIs [s]
ontime2	10118.40007782	Sum of GTIs [s]
ontime3	10118.40007782	Sum of GTIs [s]
ontime6	10118.40007782	Sum of GTIs [s]
l2events	37657	Number of level 2 events



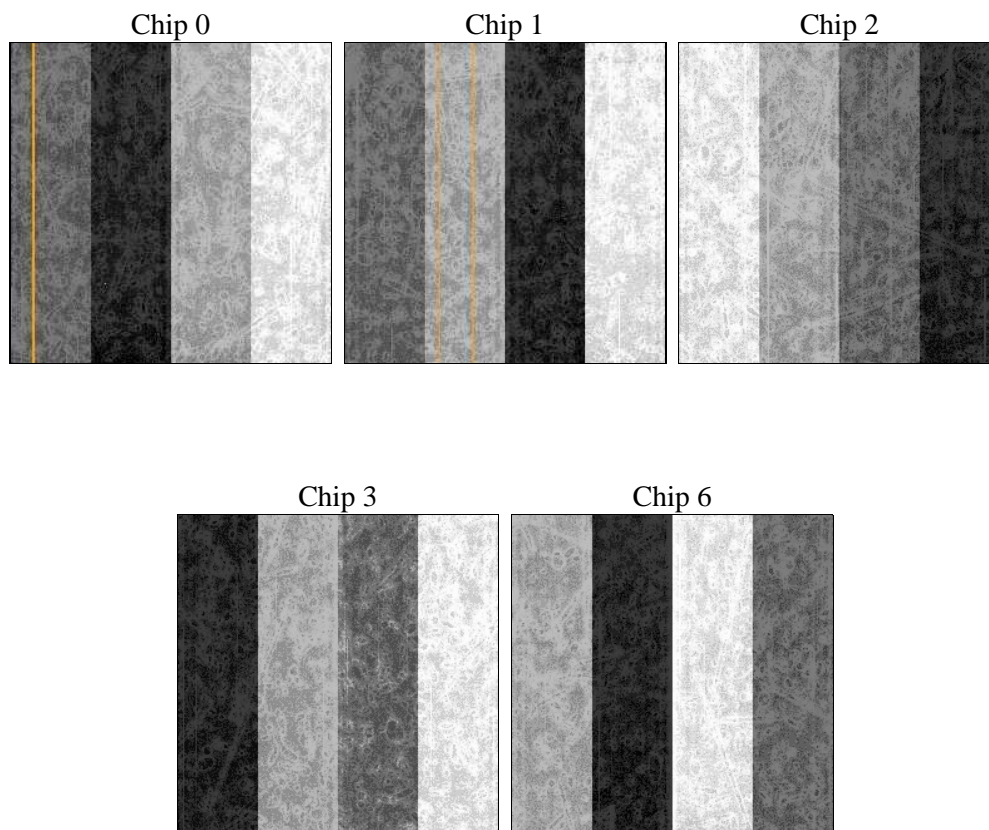
2 OBI

2.1 OBI

2.1.1 Images



2.1.2 Bias



2.1.3 Parameters

obi_num	0	Obi number	sched_exp_time	10000.000000	[s] Scheduled observation exposure time
ascdsver	8.4.4	Processing system revision	ontime	10118.40007782	Sum of GTIs [s]
caldsver	4.4.9	 	ontime0	10112.118097305	Sum of GTIs [s]
date	2012-05-17T02:25:40	Date and time of file creation	ontime1	10115.259107471	Sum of GTIs [s]
revision	2	Processing version of data	ontime2	10118.40007782	Sum of GTIs [s]
			ontime3	10118.40007782	Sum of GTIs [s]
			ontime6	10118.40007782	Sum of GTIs [s]
			l1events	440886	Number of level 1 events

2.1.4 Events

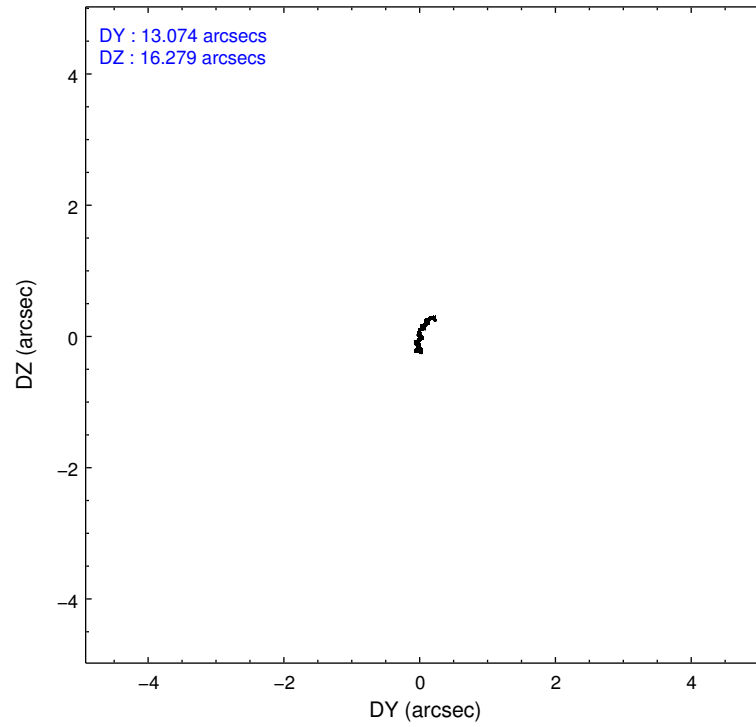
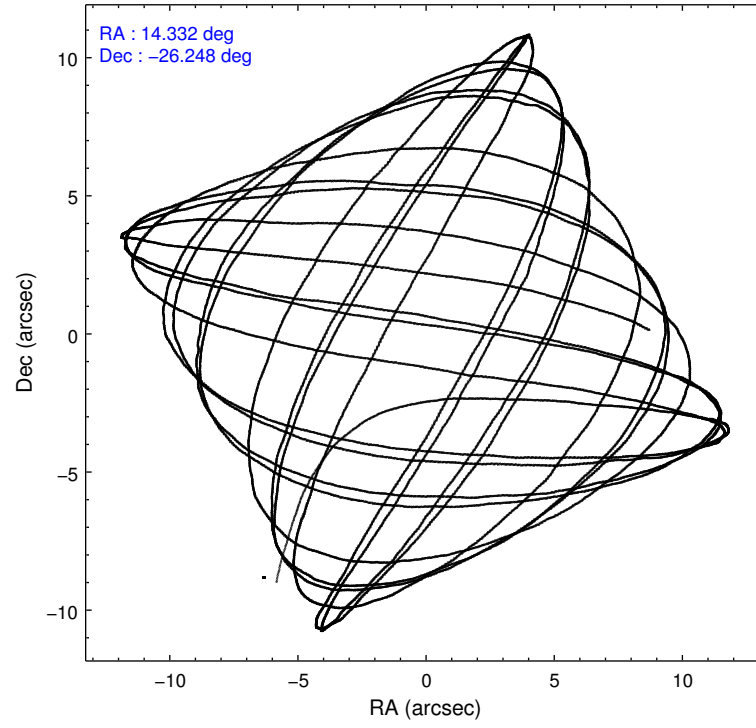
	ccd 0	ccd 1	ccd 2	ccd 3	ccd 6
level 1 events	83565	81553	94673	90956	90139
rejected events	75222	72068	86272	80653	81731
rejected %	90%	88%	91%	88%	90%

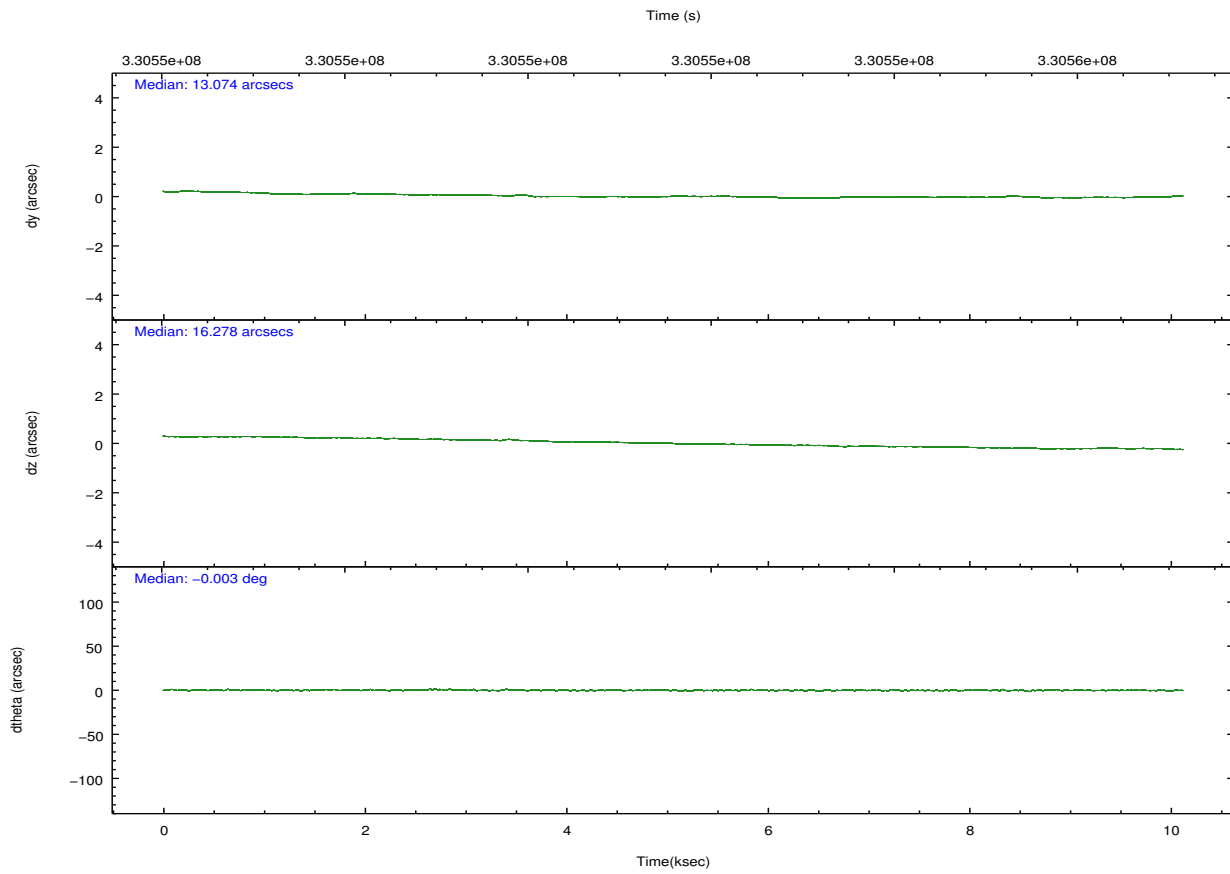
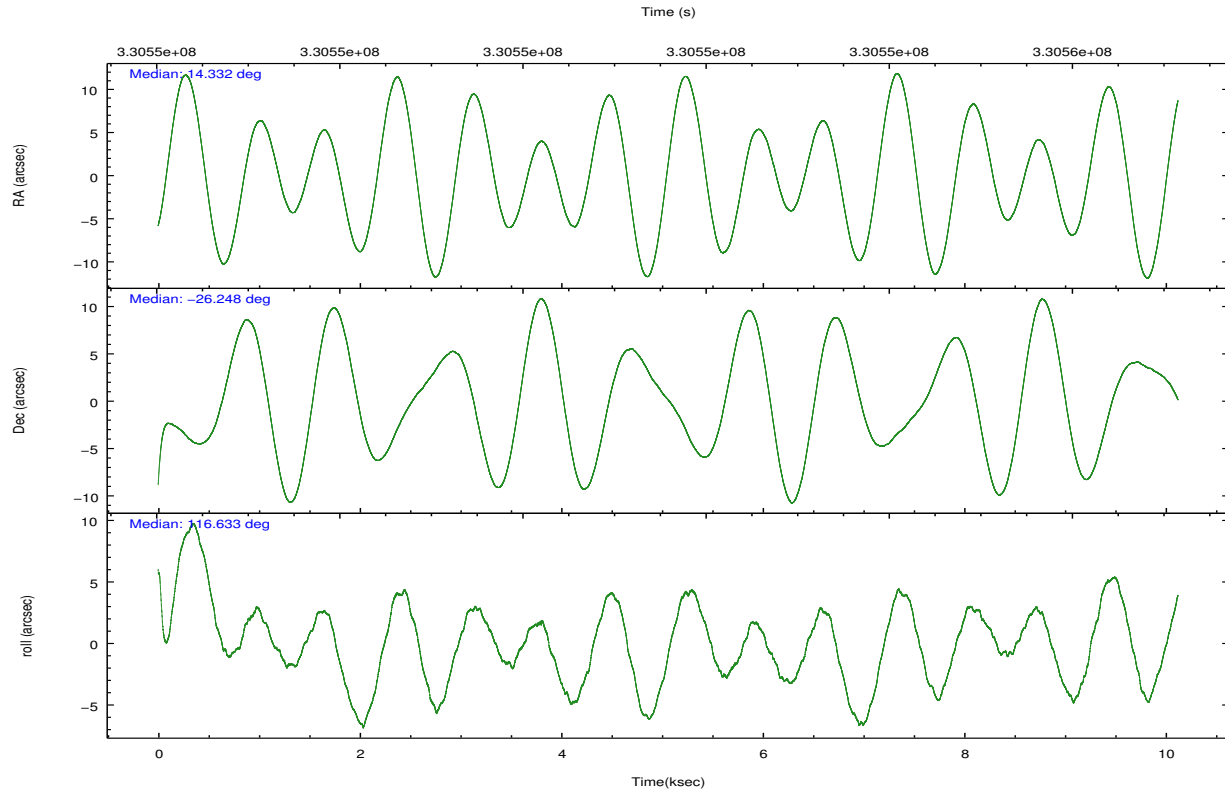
	ccd 0	ccd 1	ccd 2	ccd 3	ccd 6
grade 0 events	3265	3874	3405	5244	3159
	3%	4%	3%	5%	3%
grade 1 events	56	53	47	58	35
	0%	0%	0%	0%	0%
grade 2 events	2210	2296	2251	2153	2042
	2%	2%	2%	2%	2%
grade 3 events	993	1102	945	1094	992
	1%	1%	0%	1%	1%
grade 4 events	987	1108	975	1001	1025
	1%	1%	1%	1%	1%
grade 5 events	3135	3471	2923	3829	3684
	3%	4%	3%	4%	4%
grade 6 events	1802	2065	1715	1744	2097
	2%	2%	1%	1%	2%
grade 7 events	71117	67584	82412	75833	77105
	85%	82%	87%	83%	85%

2.2 Compared Parameters

Parameter	Planned	Actual	Parameter	Planned	Actual
Instrument	ACIS	ACIS	Obspar format version number	7	7
Detector	ACIS-01236	ACIS-01236	Obspar file type	PREDICTED	ACTUAL
Grating	NONE	NONE	Obspar update status	NONE	UPDATED
Data mode	VFAINT	VFAINT	CCD I0 on	Y	Y
Observation mode	POINTING	POINTING	CCD I1 on	Y	Y
[deg] Pointing RA	14.357444	14.33177177424854	CCD I2 on	Y	Y
[deg] Pointing Dec	-26.262617	-26.24760119143995	CCD I3 on	Y	Y
[deg] Pointing Roll	116.441969	116.6393135354317	CCD S0 on	N	N
[mm] SIM focus pos	-0.782348	-0.7809083437167272	CCD S1 on	N	N
[mm] SIM defocus	0	0.001439871863259334	CCD S2 on	O1	Y
[mm] SIM translation stage pos	-228.592463	-228.5990329025337	CCD S3 on	N	N
[mm] SIM translation stage offset	-5	-4.993420100396037	CCD S4 on	N	N
[s] Observation start time (MET)	330546643.184000	330545130.73324	CCD S5 on	N	N
Observation start date	2008-06-22T18:29:38	2008-06-22T18:05:30	Number of optional ACIS chips dropped	0	0
[s] Observation end time (MET)	330556643.184000	330557578.33385	On-chip summing requested	N	N
Observation end date	2008-06-22T21:16:18	2008-06-22T21:32:58	Subarray requested	NONE	NONE
Read mode	TIMED	TIMED	Alternating exposures requested	N	N
			[s] Primary exposure time	0.000000	3.1

2.3 Aspect



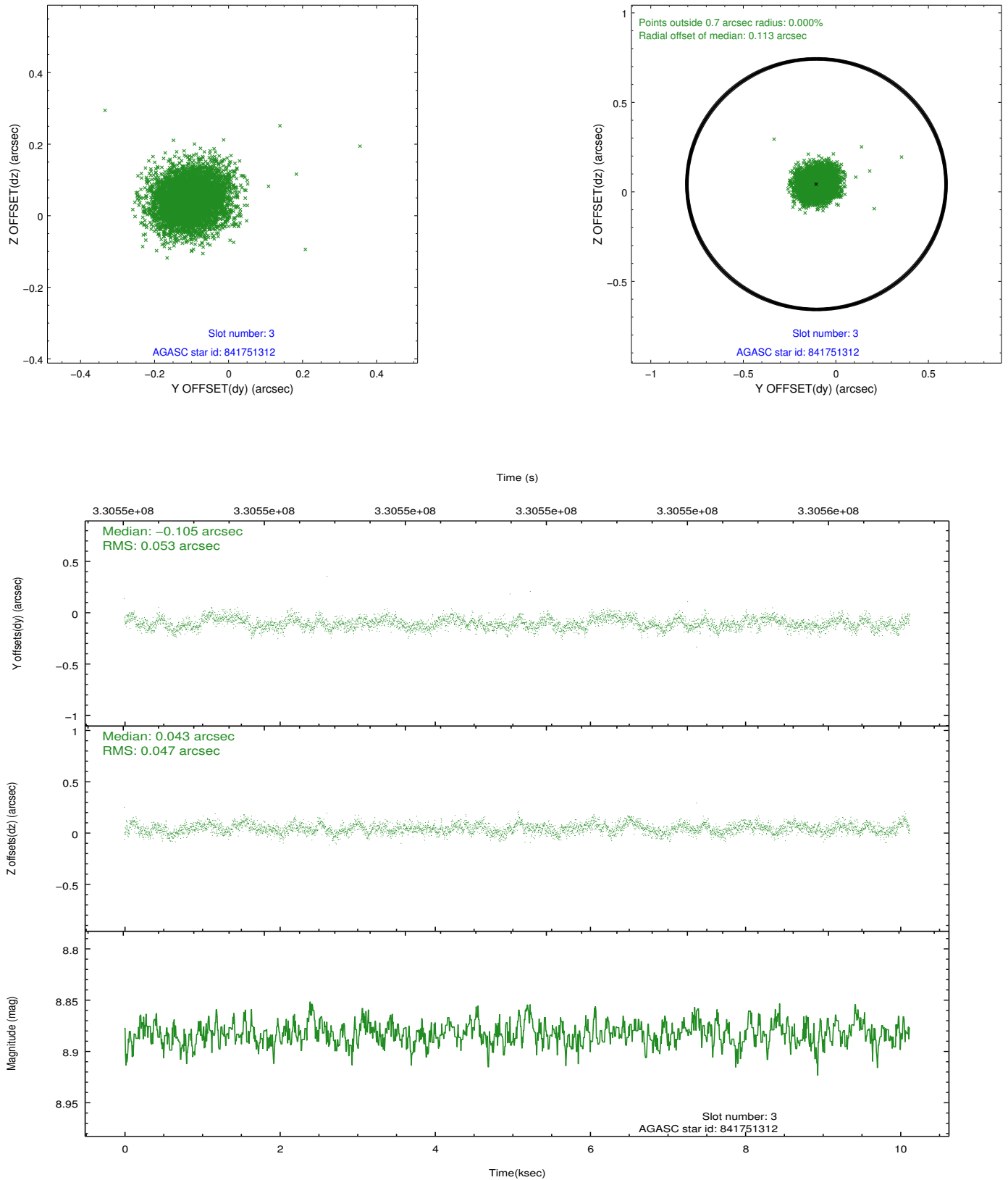


Slot Statistics

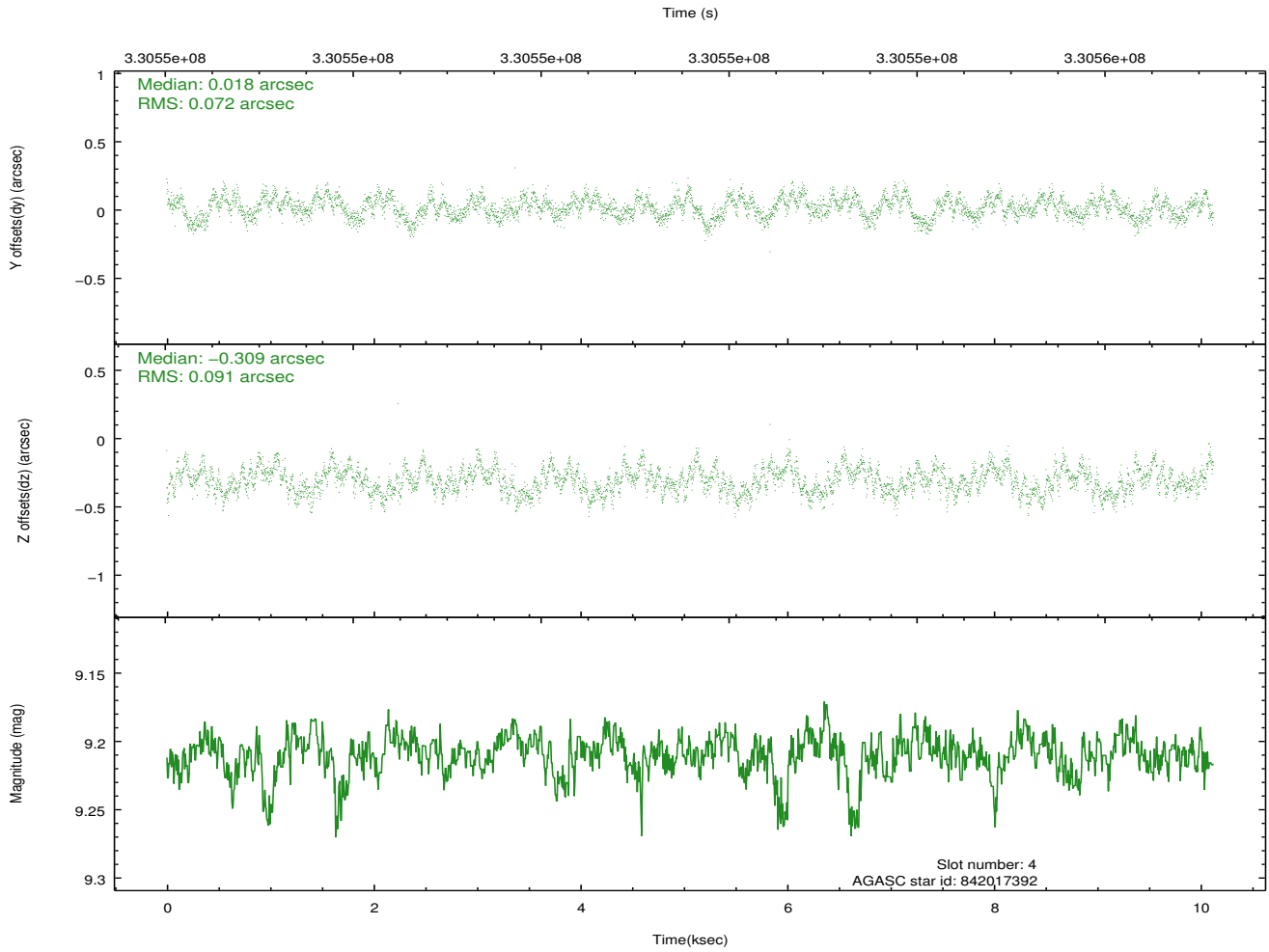
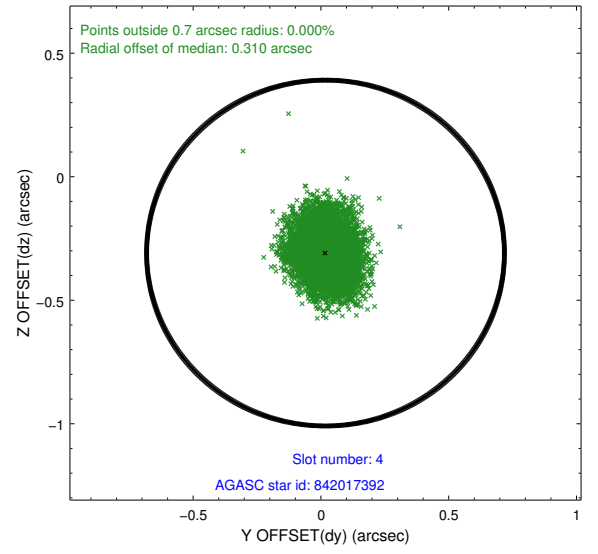
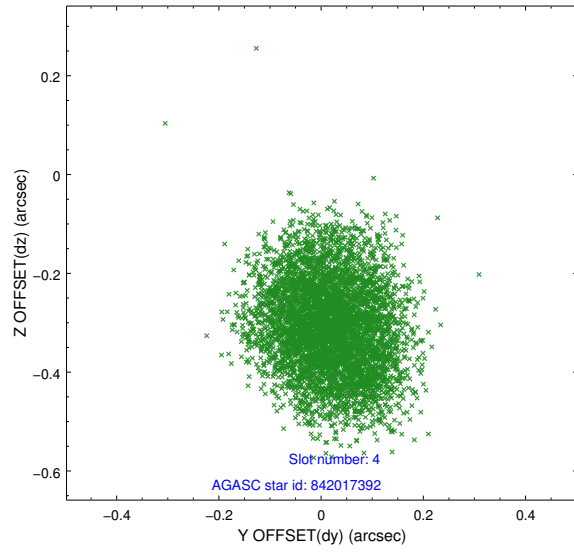
slot	status	id	mag	n_pts	med_dy	med_dz	dr1	dr2	ra	dec	mean_y	mean_z
0	FID	ACIS-I-1	6.98	2469	0.036	0.016	0.008	0.014	0.000000	0.000000	926.36	-942.37
1	FID	ACIS-I-5	6.97	2469	-0.189	0.053	0.007	0.015	0.000000	0.000000	-1821.70	954.82
2	FID	ACIS-I-6	6.99	2468	0.062	0.002	0.007	0.012	0.000000	0.000000	391.33	1599.89
3	GUIDE	841751312	8.88	4939	-0.105	0.043	0.075	0.121	13.927257	-25.981266	1524.76	796.80
4	GUIDE	842017392	9.21	4934	0.018	-0.309	0.126	0.195	13.825957	-26.597403	-320.21	2069.99
5	GUIDE	842022320	8.80	4939	-0.065	0.057	0.112	0.168	14.026788	-26.347023	201.61	1091.02
6	GUIDE	842023144	8.07	4937	0.109	0.463	0.097	0.179	15.159826	-26.283498	-1227.39	-2281.44
7	GUIDE	842017032	9.79	4934	0.049	-0.255	0.217	0.317	13.862029	-26.595956	-367.35	1962.93

2.4 Star Slots

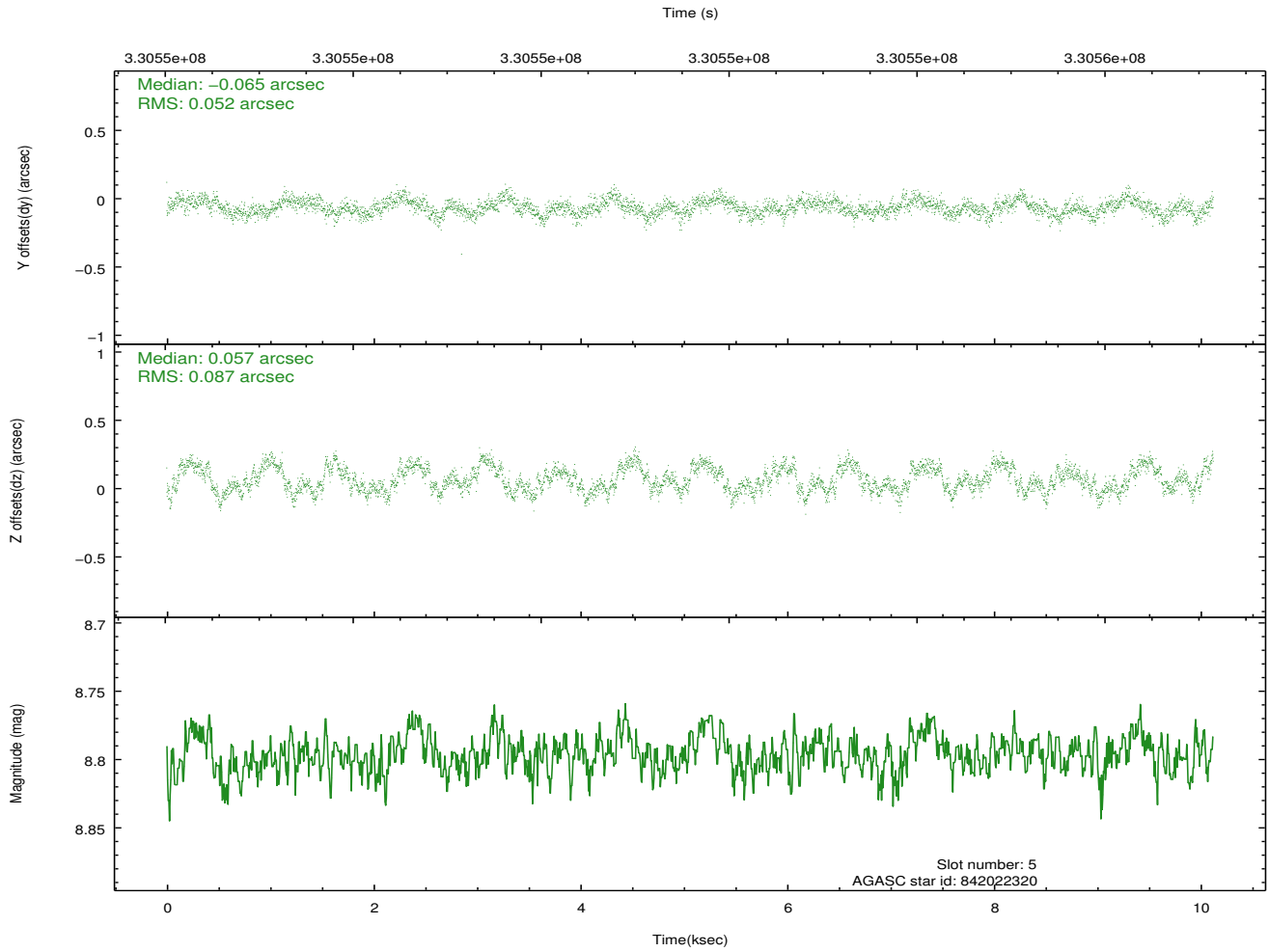
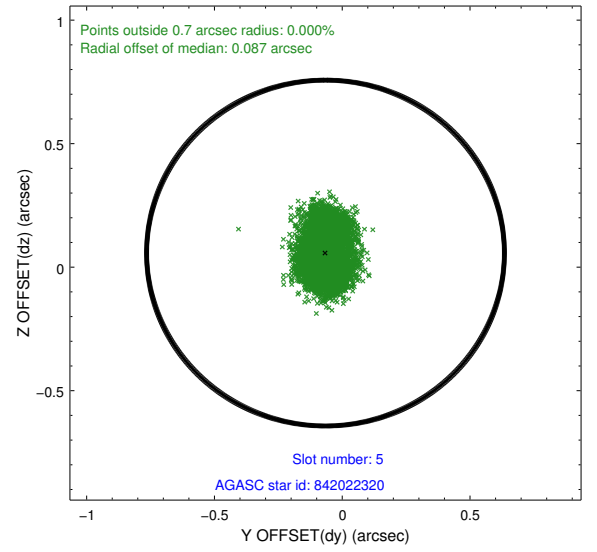
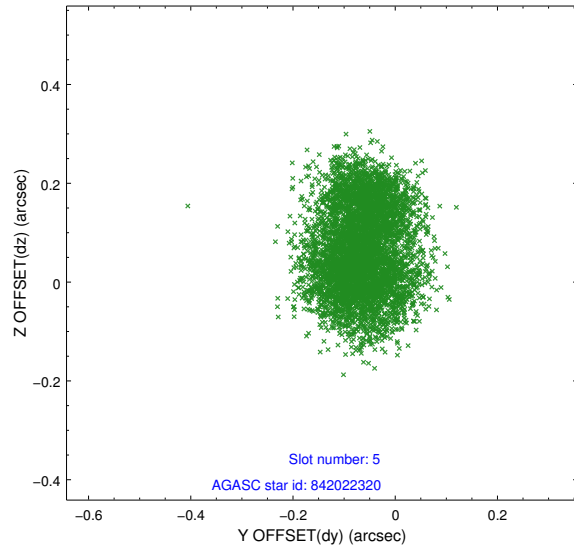
2.4.1 Slot 3



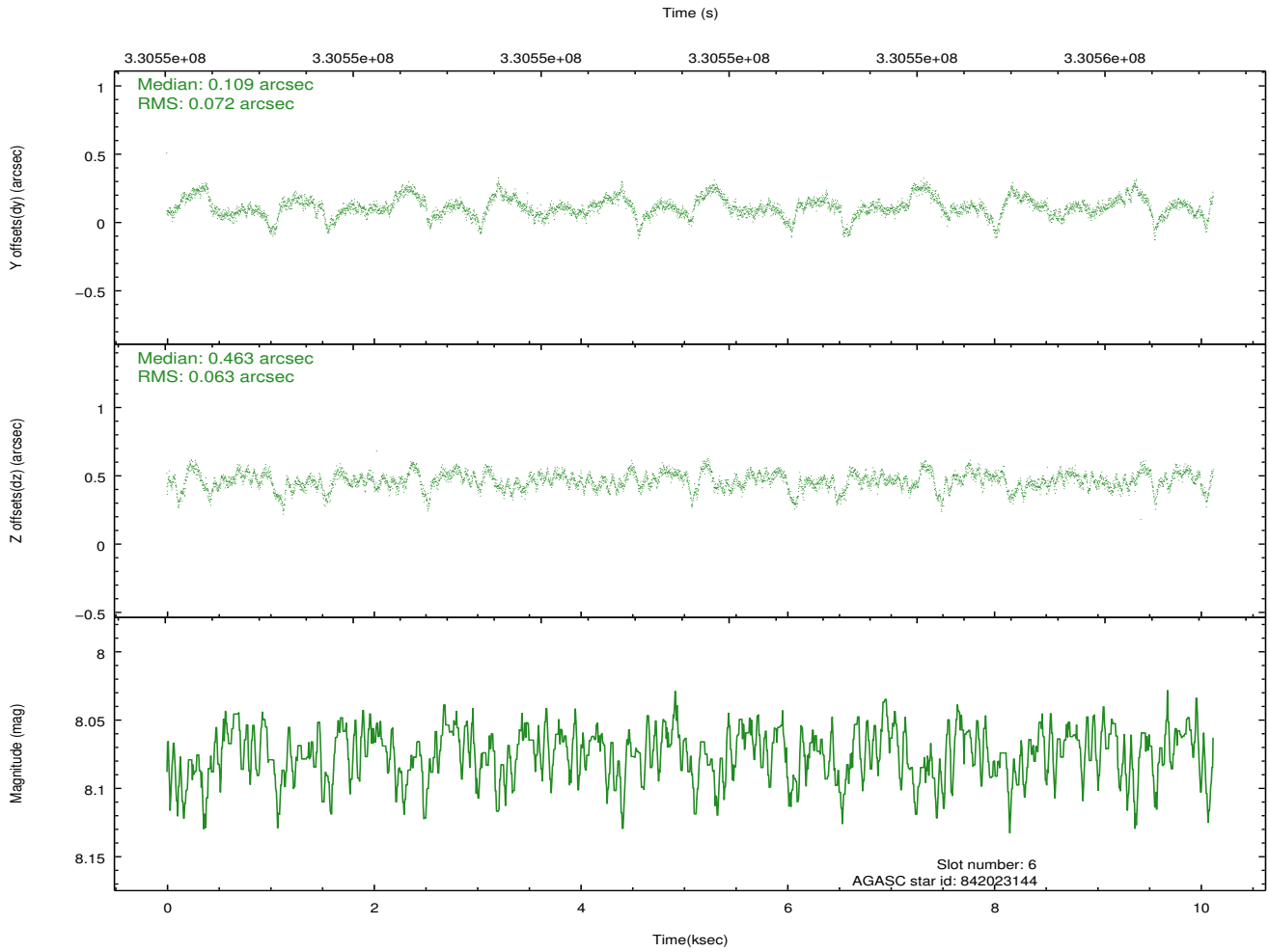
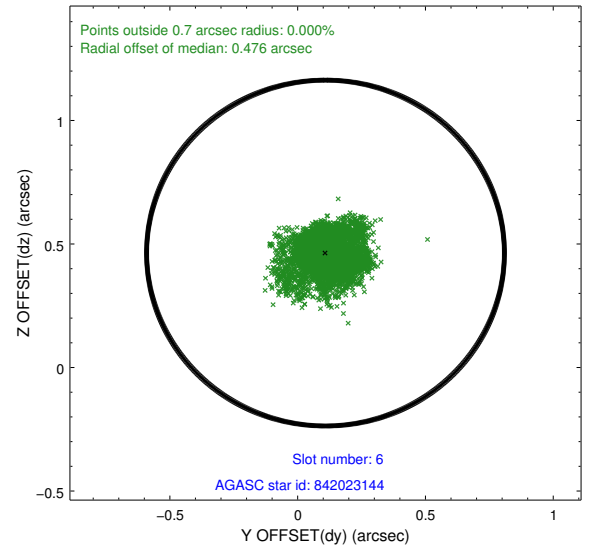
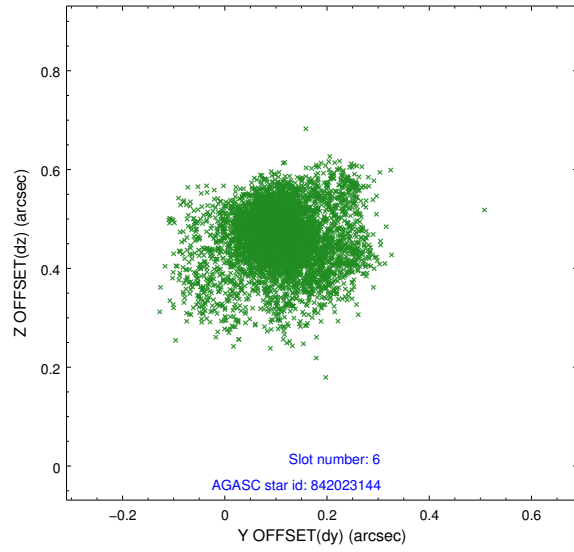
2.4.2 Slot 4



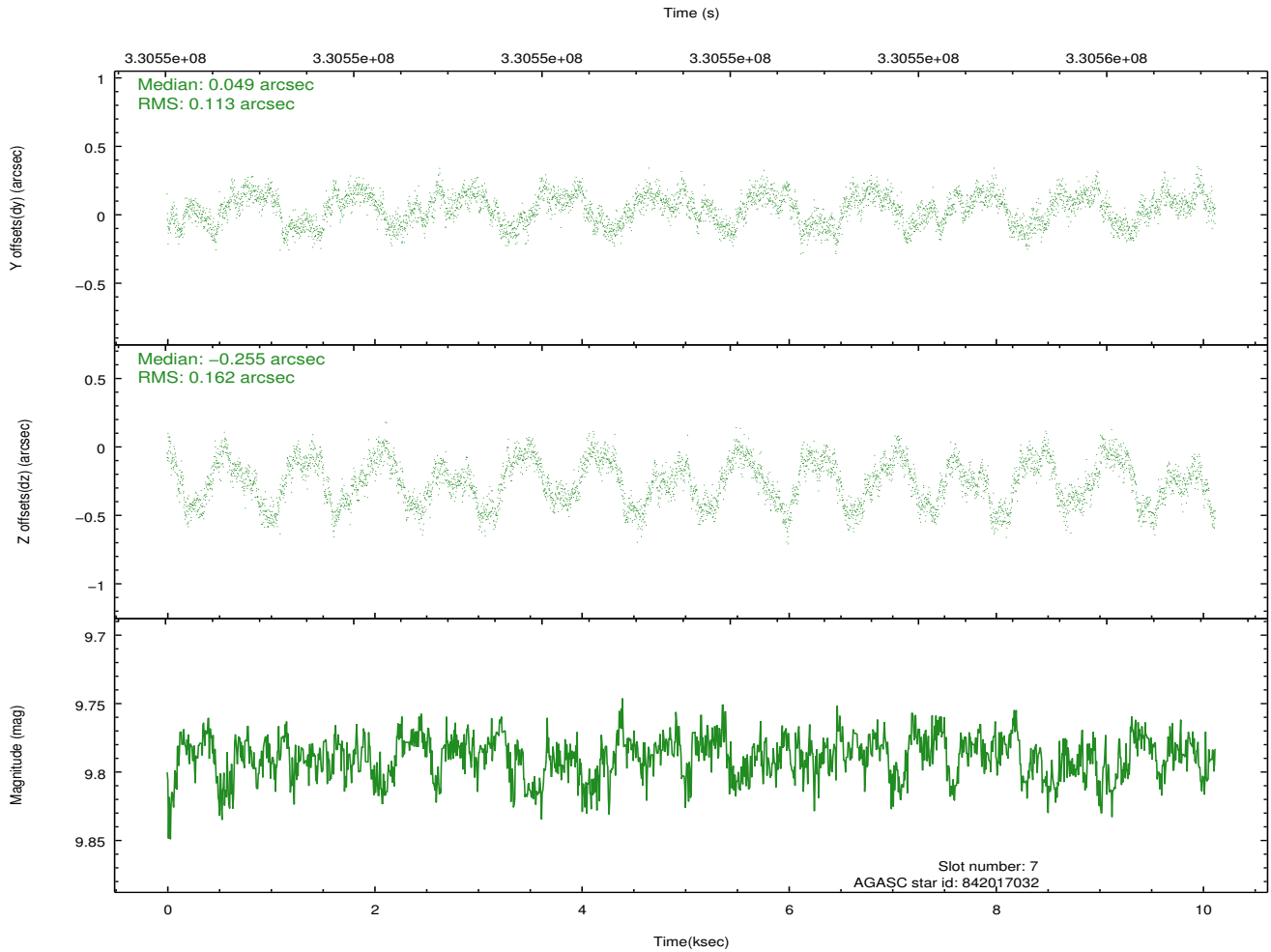
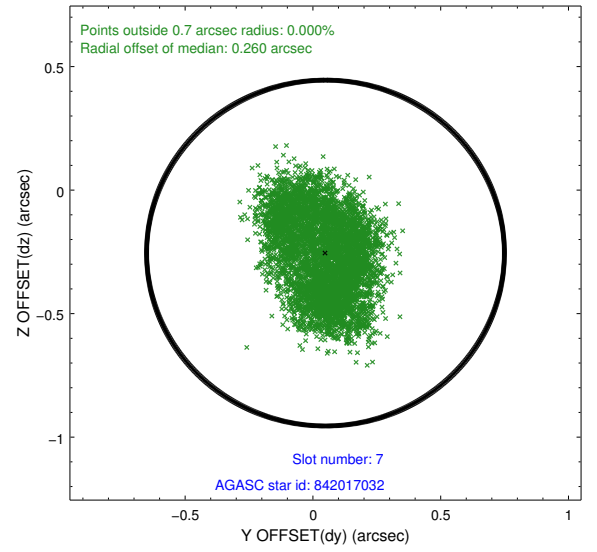
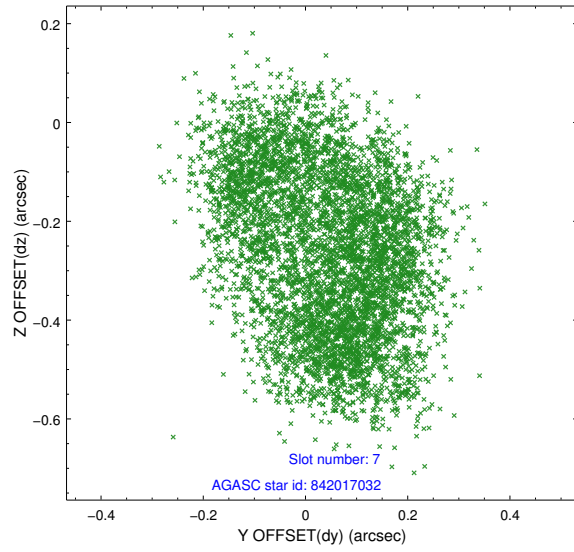
2.4.3 Slot 5



2.4.4 Slot 6

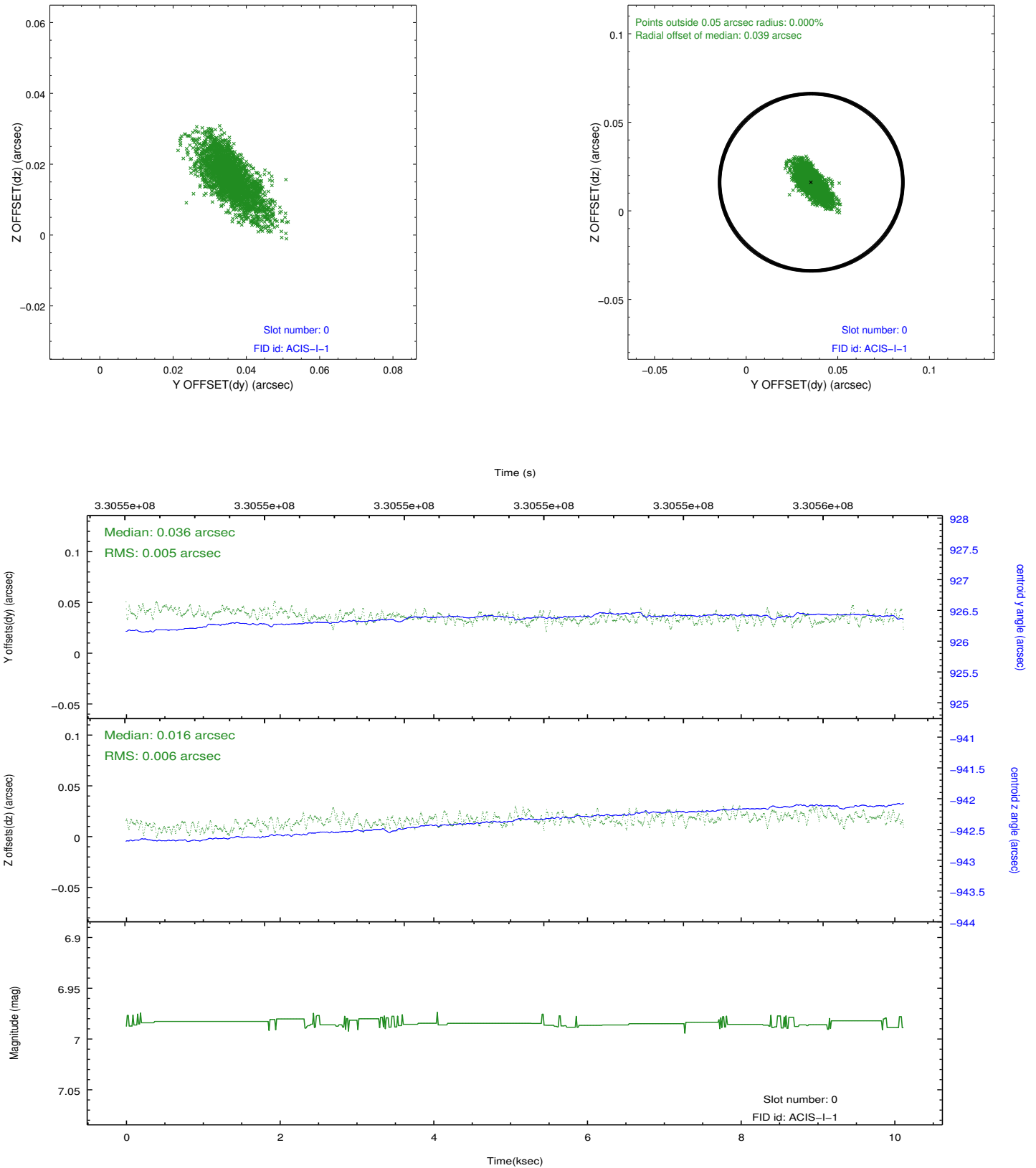


2.4.5 Slot 7

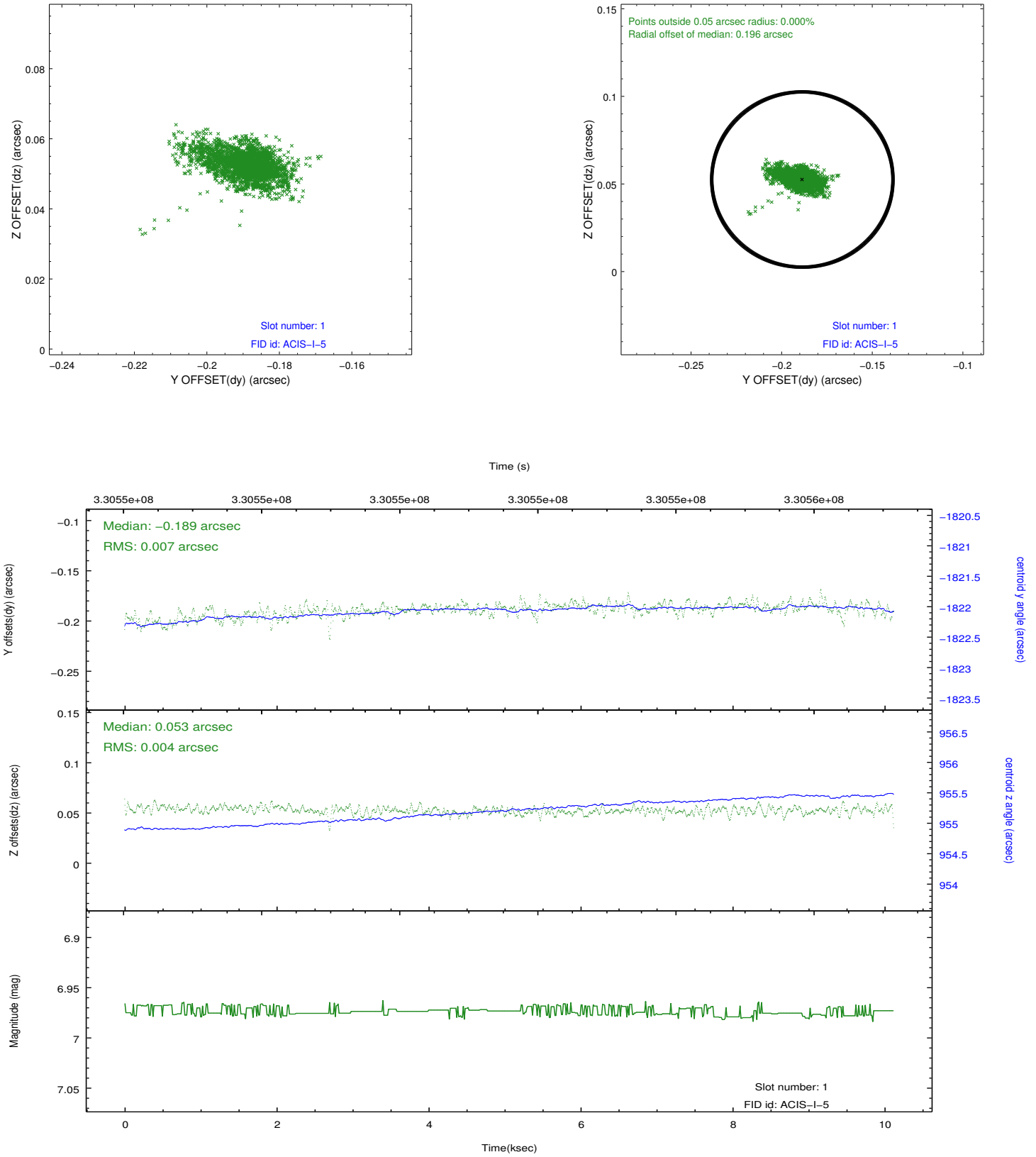


2.5 FID Slots

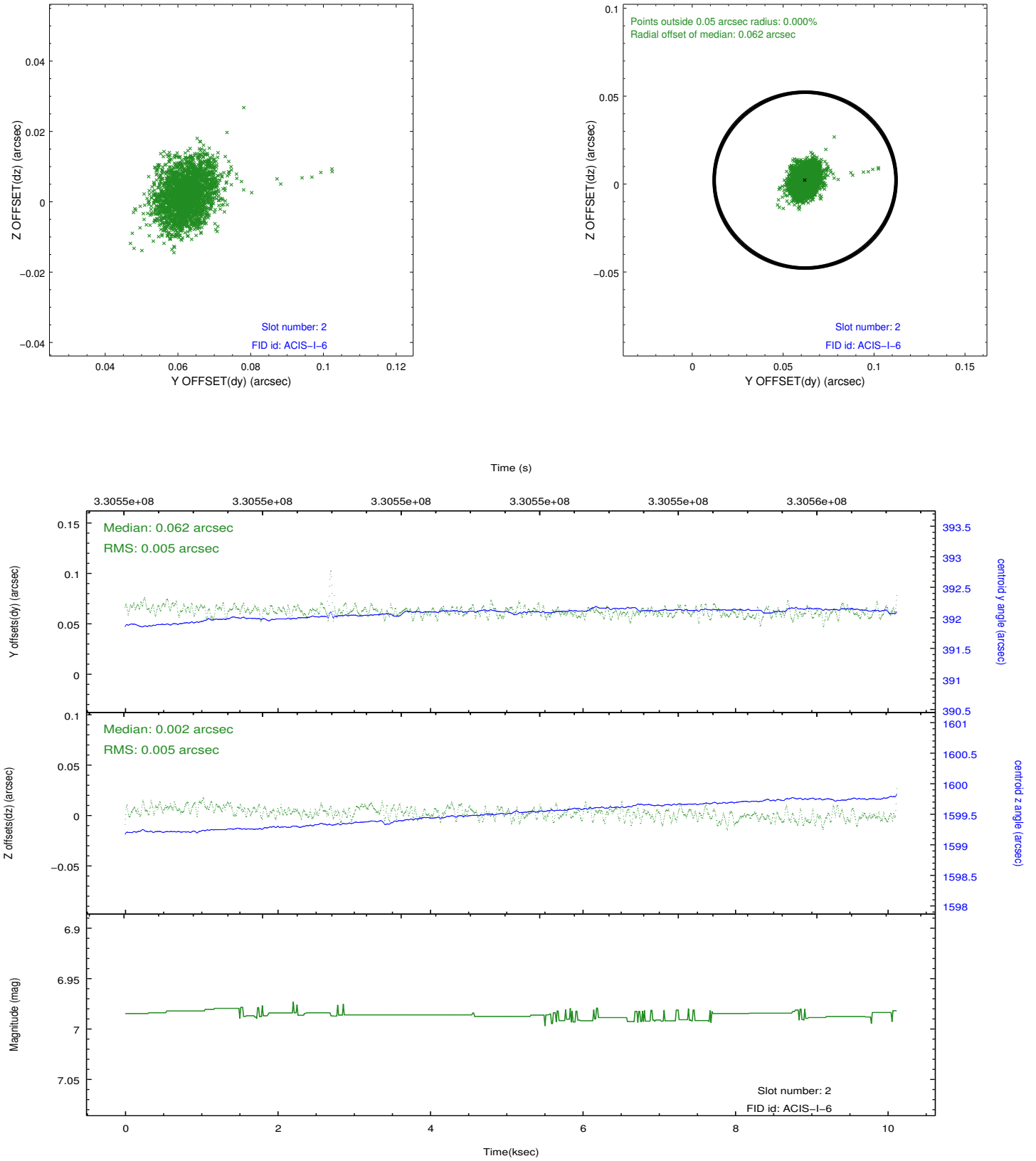
2.5.1 Slot 0



2.5.2 Slot 1



2.5.3 Slot 2



A Summary

A.1 Status

V&V Scientist	Jen Lauer
V&V Date (YYYY-MM-DD)	2012.05.22
V&V Edition	1
V&V Disposition and Status	OK
V&V Charge Time	10.1184

A.2 Comments