

V&V Reference Report

L2 ASCDS Version : 8.4.4

Observation 9067 - L2 Version 2
Chandra X-Ray Center

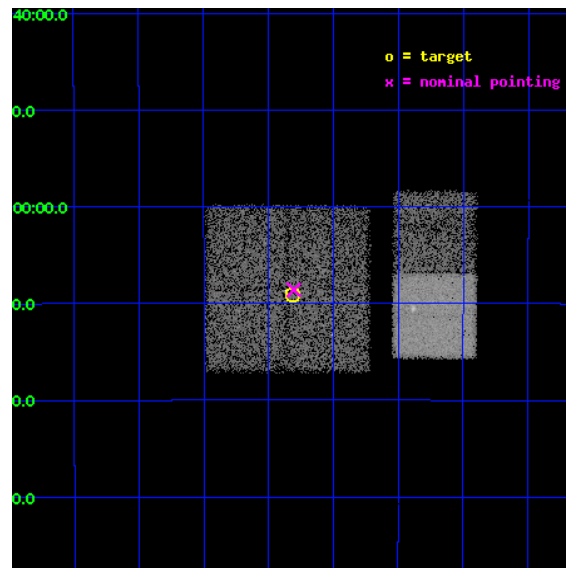
L2 Processing Date : May 13 2012

Contents

1	Front	2
2	OBI	3
2.1	OBI	3
2.1.1	Images	3
2.1.2	Bias	3
2.1.3	Parameters	4
2.1.4	Events	4
2.2	Compared Parameters	5
2.3	Aspect	6
2.4	Star Slots	9
2.4.1	Slot 3	9
2.4.2	Slot 4	10
2.4.3	Slot 5	11
2.4.4	Slot 6	12
2.4.5	Slot 7	13
2.5	FID Slots	14
2.5.1	Slot 0	14
2.5.2	Slot 1	15
2.5.3	Slot 2	16
A	Summary	17
A.1	Status	17
A.2	Comments	17

1 Front

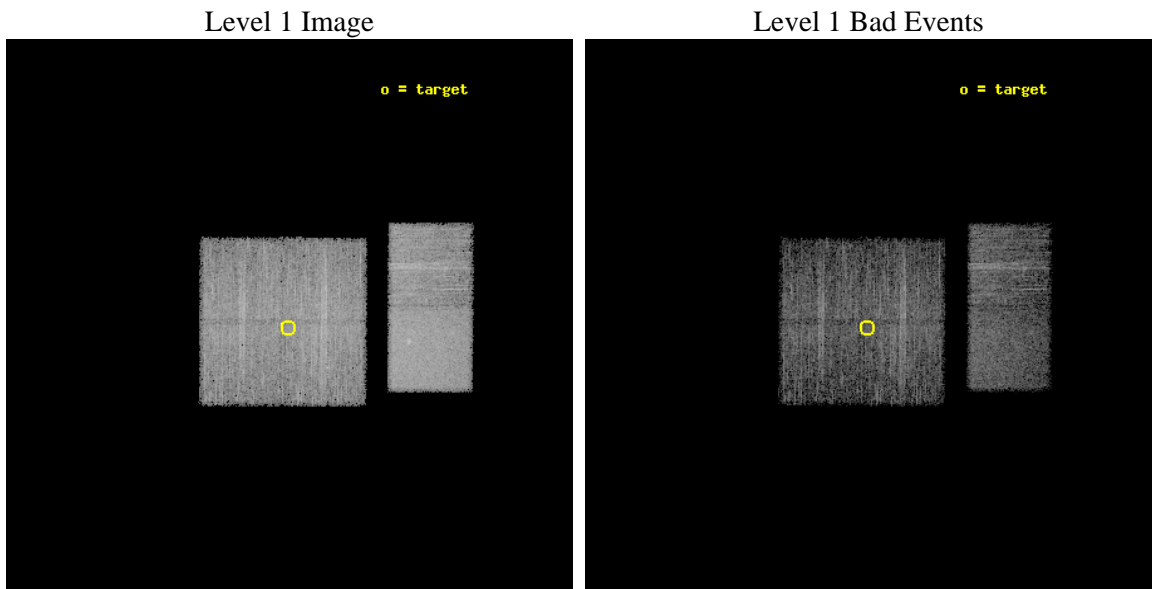
seq_num	400918	Sequence number
obs_id	9067	Observation id
title	Localization and Spectra of INTEGRAL-Selected Sources in the Galactic Plane	Proposal title
observer	Dr. John Tomsick	Principal investigator
object	IGR J18173-2509	Source name
dtcycle	0	
cycle	P	events from which exps? Prim/Second/Both
ra_targ	274.329167	Observer's specified target RA [deg]
dec_targ	-25.151111	Observer's specified target Dec [deg]
ra_nom	274.32625772886	Nominal RA [deg]
dec_nom	-25.143422832281	Nominal Dec [deg]
roll_nom	90.272925249419	Nominal Roll [deg]
revision	2	Processing version of data
ontime	4956.2516466379	Sum of GTIs [s]
livetime	4893.4926039917	Livetime [s]
ontime0	4956.128526628	Sum of GTIs [s]
ontime1	4956.1695666313	Sum of GTIs [s]
ontime2	4956.2106066346	Sum of GTIs [s]
ontime3	4956.2516466379	Sum of GTIs [s]
ontime6	4956.3337266445	Sum of GTIs [s]
ontime7	4956.2926866412	Sum of GTIs [s]
l2events	53345	Number of level 2 events



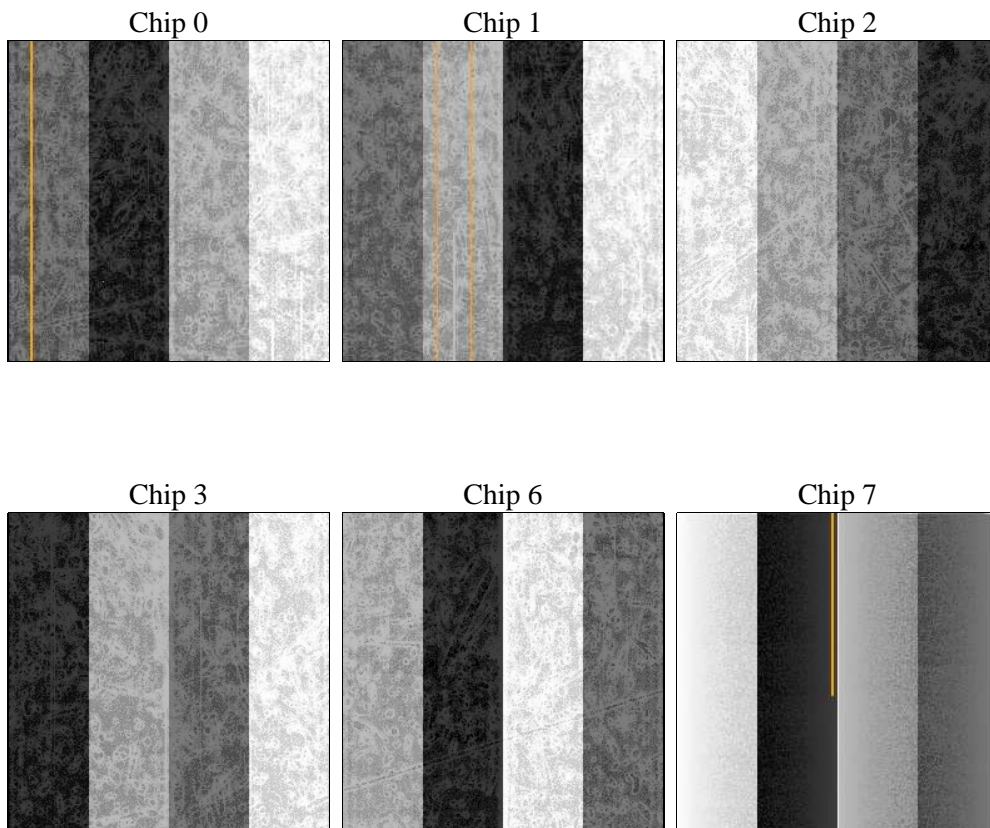
2 OBI

2.1 OBI

2.1.1 Images



2.1.2 Bias



2.1.3 Parameters

obi_num	0	Obi number	sched_exp_time	5000.000000	[s] Scheduled observation exposure time
ascdsver	8.4.4	Processing system revision	ontime	4956.2516466379	Sum of GTIs [s]
caldsver	4.4.9	 	ontime0	4956.128526628	Sum of GTIs [s]
date	2012-05-14T01:05:54	Date and time of file creation	ontime1	4956.1695666313	Sum of GTIs [s]
revision	2	Processing version of data	ontime2	4956.2106066346	Sum of GTIs [s]
			ontime3	4956.2516466379	Sum of GTIs [s]
			ontime6	4956.3337266445	Sum of GTIs [s]
			ontime7	4956.2926866412	Sum of GTIs [s]
			l1events	292338	Number of level 1 events

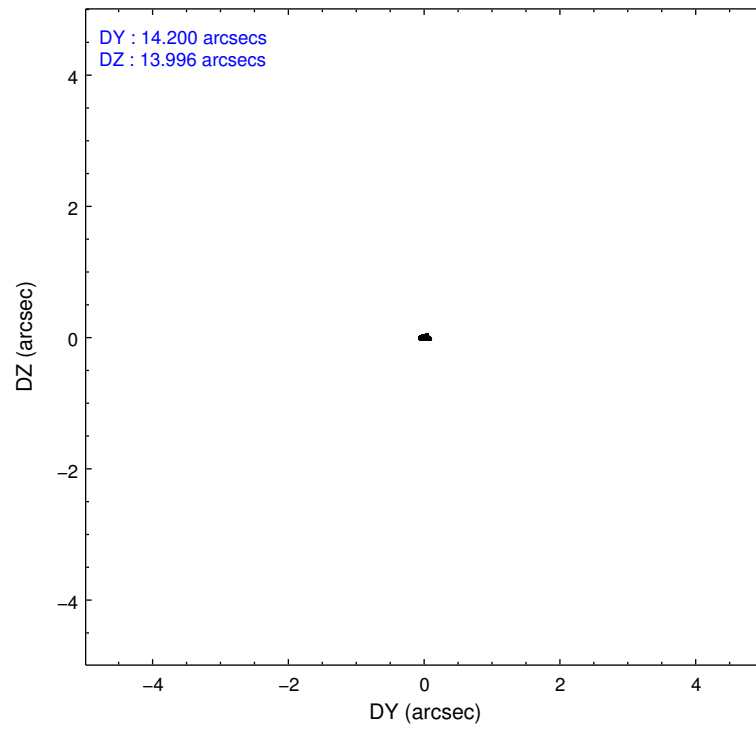
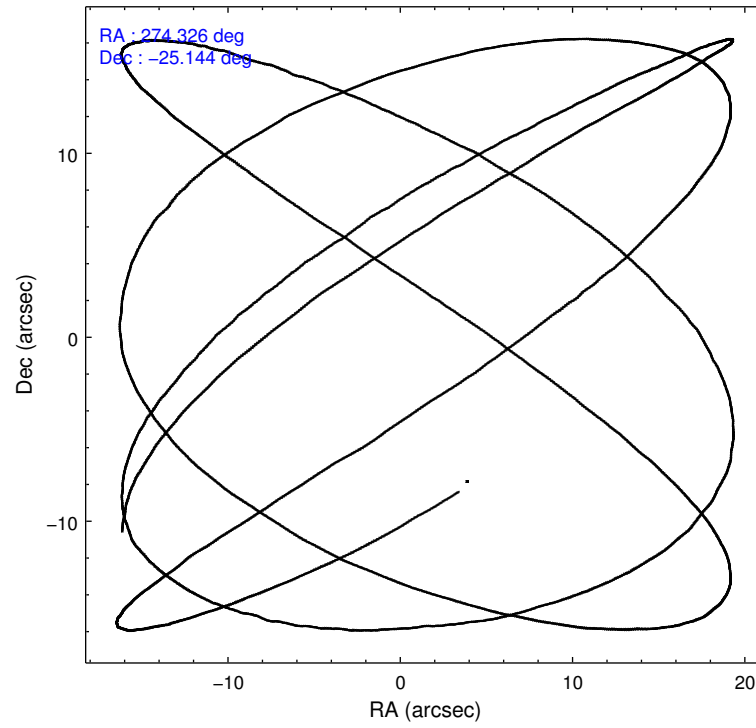
2.1.4 Events

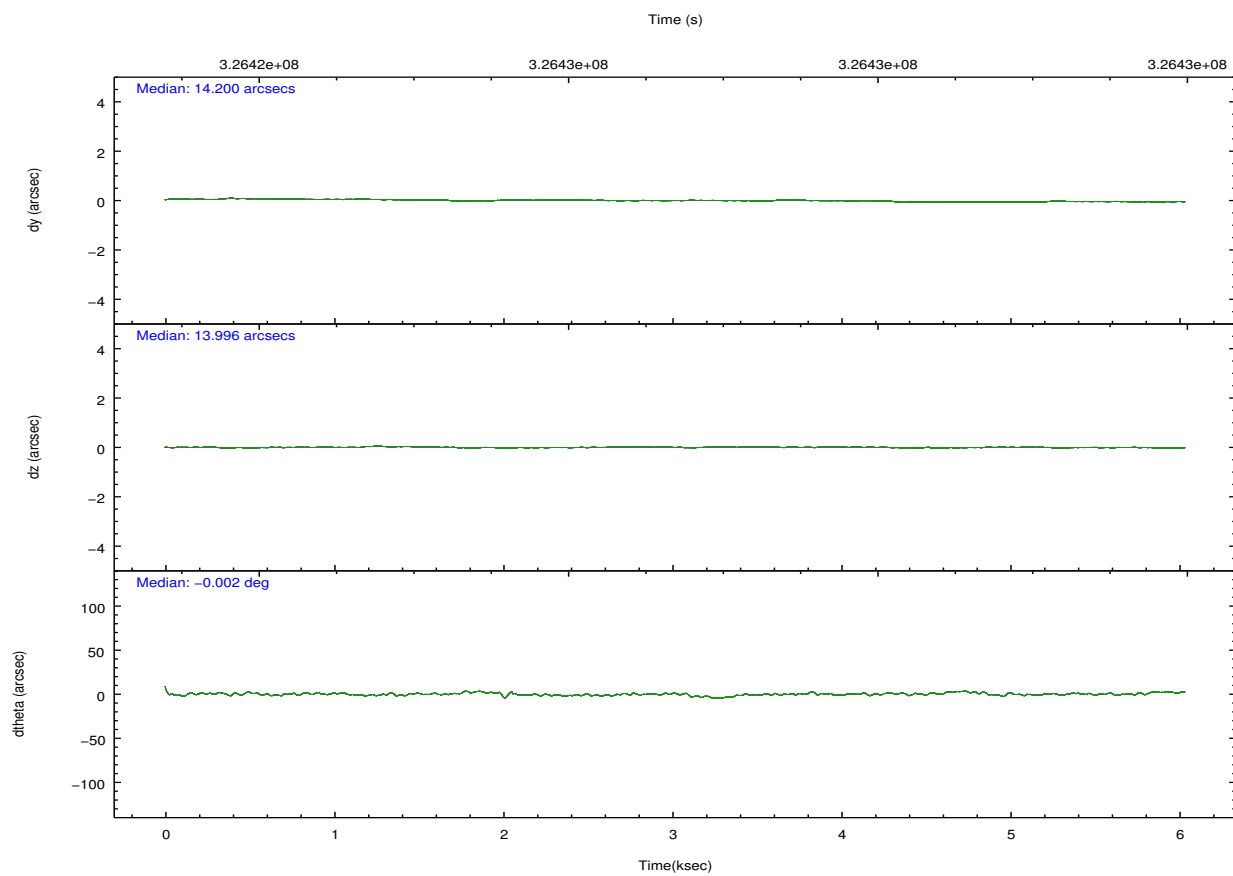
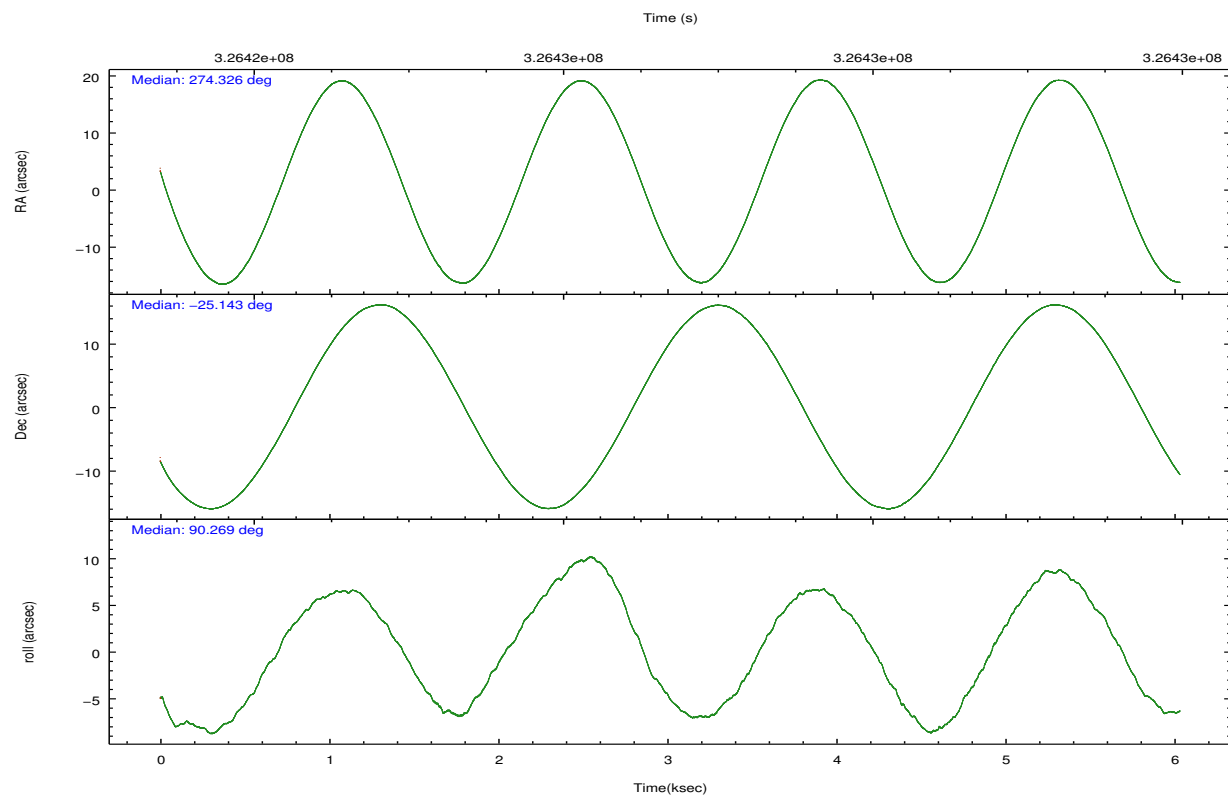
	ccd 0	ccd 1	ccd 2	ccd 3	ccd 6	ccd 7		ccd 0	ccd 1	ccd 2	ccd 3	ccd 6	ccd 7
level 1 events	43361	42787	47040	46132	47354	65664	grade 0 events	2715	2965	2663	2891	2359	2471
rejected events	37338	35931	41284	40045	41465	38303		6%	6%	5%	6%	4%	3%
rejected %	86%	83%	87%	86%	87%	58%	grade 1 events	24	39	32	33	30	65
								0%	0%	0%	0%	0%	0%
							grade 2 events	1325	1505	1158	1128	1293	5622
								3%	3%	2%	2%	2%	8%
							grade 3 events	492	590	508	524	536	2439
								1%	1%	1%	1%	1%	3%
							grade 4 events	484	568	494	519	542	2339
								1%	1%	1%	1%	1%	3%
							grade 5 events	1848	2080	1784	2244	2293	5997
								4%	4%	3%	4%	4%	9%
							grade 6 events	1019	1237	942	1039	1161	14529
								2%	2%	2%	2%	2%	22%
							grade 7 events	35454	33803	39459	37754	39140	32202
								81%	79%	83%	81%	82%	49%

2.2 Compared Parameters

Parameter	Planned	Actual	Parameter	Planned	Actual
Instrument	ACIS	ACIS	Obspar format version number	7	7
Detector	ACIS-012367	ACIS-012367	Obspar file type	PREDICTED	ACTUAL
Grating	NONE	NONE	Obspar update status	NONE	UPDATED
Data mode	FAINT	FAINT	CCD I0 on	Y	Y
Observation mode	POINTING	POINTING	CCD I1 on	Y	Y
[deg] Pointing RA	274.341894	274.3262577288586	CCD I2 on	Y	Y
[deg] Pointing Dec	-25.167101	-25.14342283228103	CCD I3 on	Y	Y
[deg] Pointing Roll	90.070884	90.27292524941893	CCD S0 on	N	N
[mm] SIM focus pos	-0.782348	-0.7809083437167272	CCD S1 on	N	N
[mm] SIM defocus	0	0.001439871863259334	CCD S2 on	O1	Y
[mm] SIM translation stage pos	-233.592463	-233.5874344608287	CCD S3 on	O2	Y
[mm] SIM translation stage offset	0	-0.005018542100998502	CCD S4 on	N	N
[s] Observation start time (MET)	326424709.184000	326423325.70703	CCD S5 on	N	N
Observation start date	2008-05-06T01:30:44	2008-05-06T01:08:45	Number of optional ACIS chips dropped	0	0
[s] Observation end time (MET)	326429709.184000	326430030.23236	On-chip summing requested	N	N
Observation end date	2008-05-06T02:54:04	2008-05-06T03:00:30	Subarray requested	NONE	NONE
Read mode	TIMED	TIMED	Alternating exposures requested	N	N
			[s] Primary exposure time	0.000000	3.2

2.3 Aspect



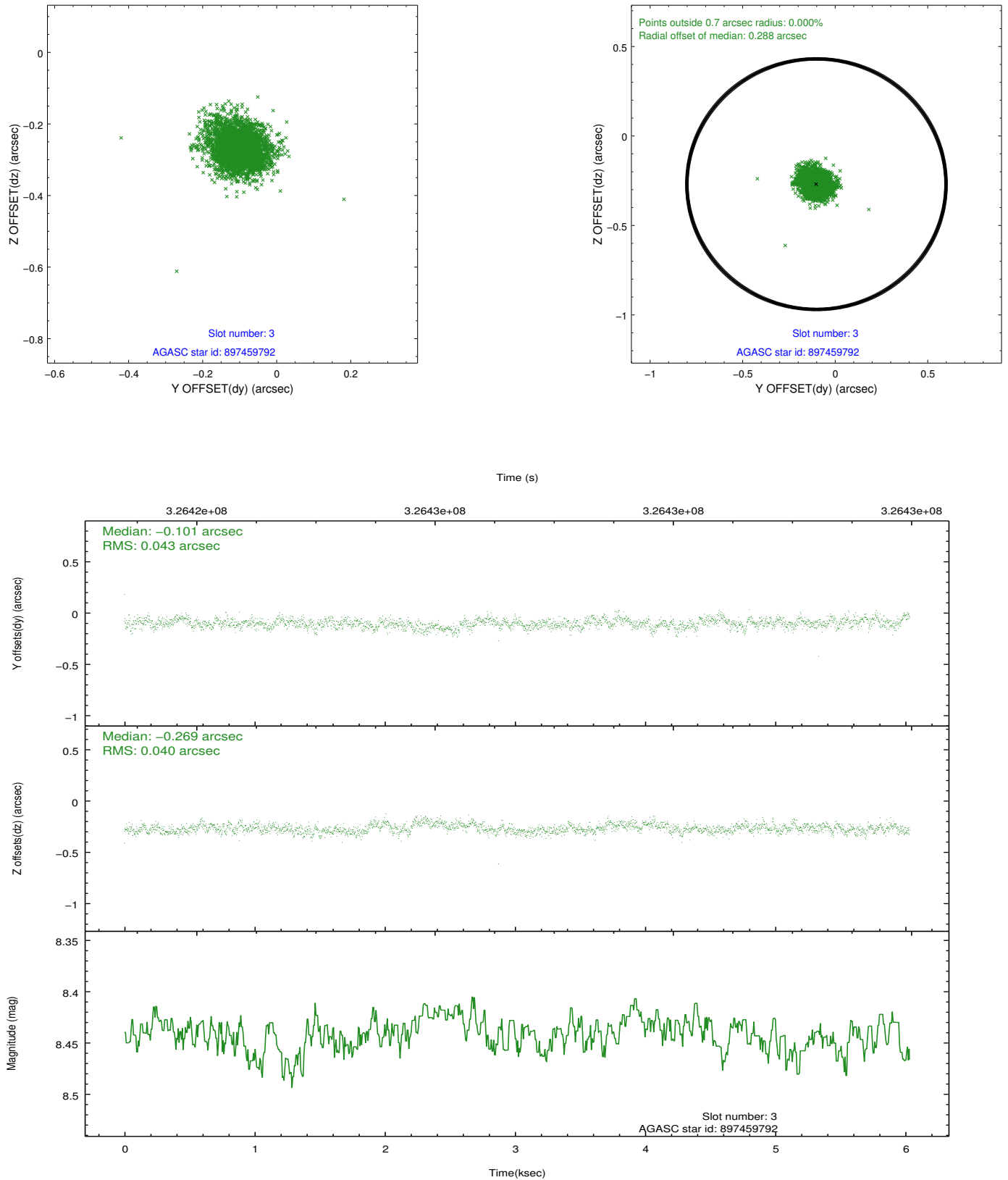


Slot Statistics

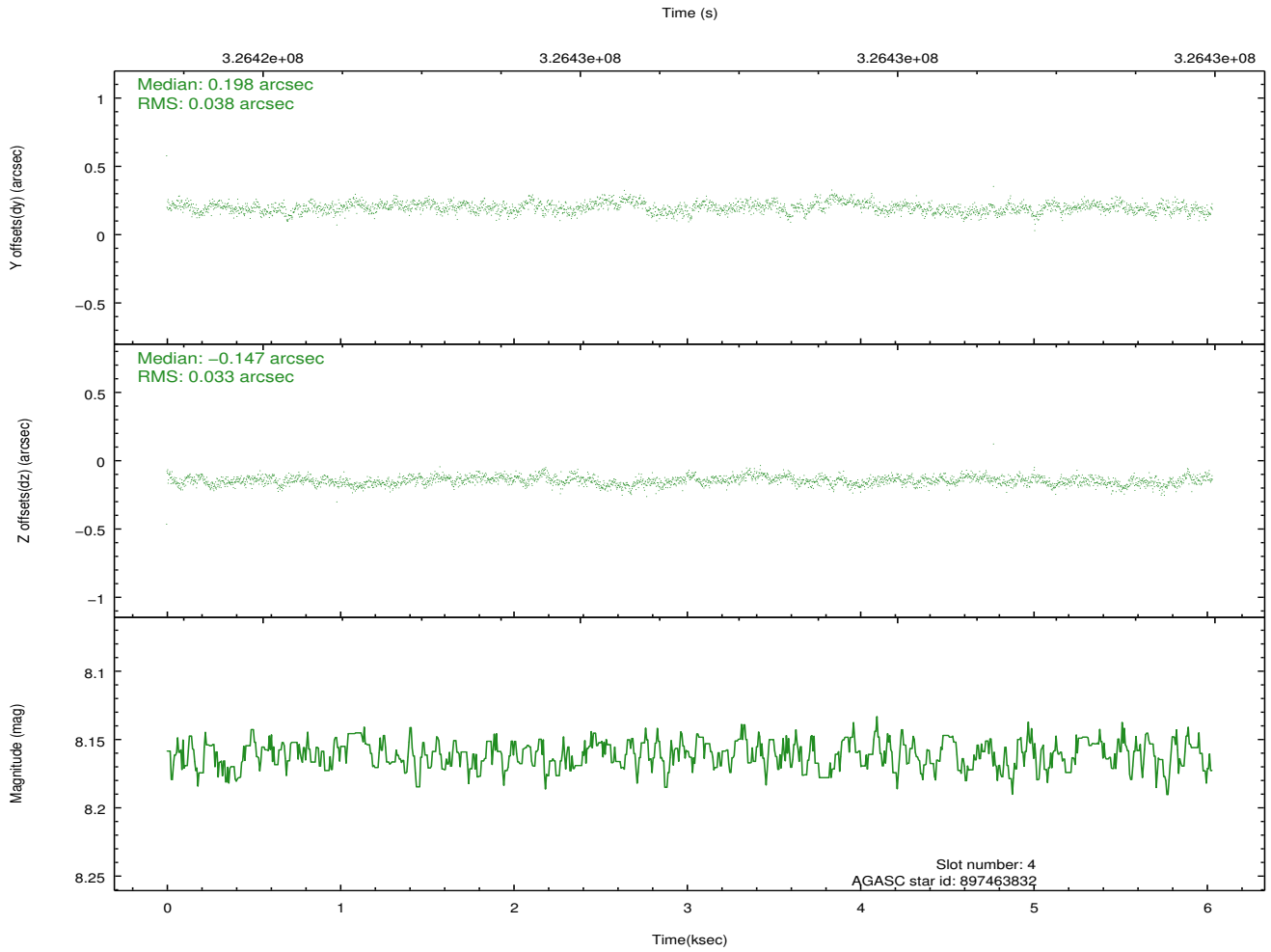
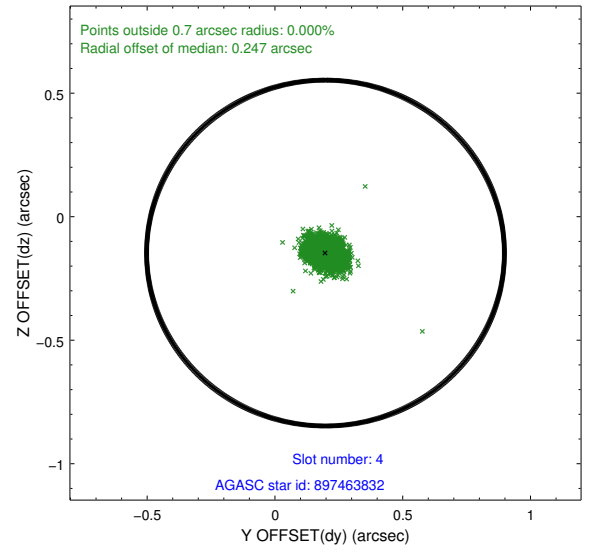
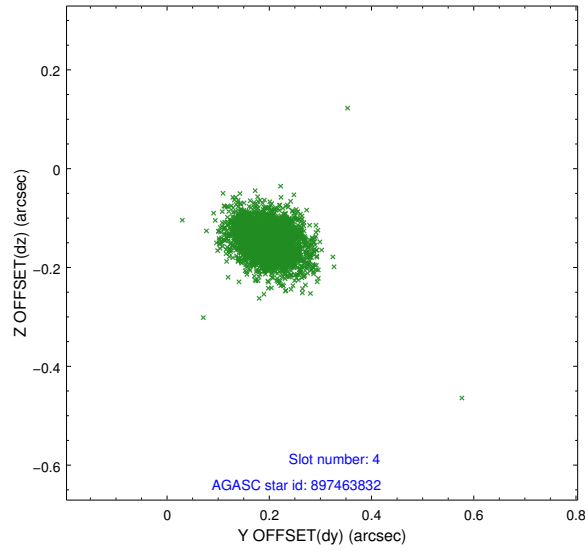
slot	status	id	mag	n_pts	med_dy	med_dz	dr1	dr2	ra	dec	mean_y	mean_z
0	FID	ACIS-I-1	7.04	1472	-0.030	0.064	0.011	0.024	0.000000	0.000000	925.25	-837.51
1	FID	ACIS-I-2	6.95	1472	-0.163	-0.080	0.008	0.016	0.000000	0.000000	-768.43	-844.58
2	FID	ACIS-I-4	6.96	1471	0.095	0.085	0.009	0.026	0.000000	0.000000	2144.81	1061.82
3	GUIDE	897459792	8.44	2944	-0.101	-0.269	0.061	0.103	273.647609	-24.566388	2159.64	2269.90
4	GUIDE	897463832	8.16	2944	0.198	-0.147	0.051	0.087	273.990672	-25.710989	-1957.00	1141.60
5	GUIDE	897598640	8.56	2942	-0.273	0.174	0.066	0.107	274.532149	-24.584625	2095.04	-625.35
6	GUIDE	897607664	8.93	2942	0.169	0.120	0.089	0.147	274.763984	-25.327976	-582.50	-1373.56
7	GUIDE	897612528	7.22	2942	0.008	0.117	0.060	0.091	274.400257	-25.341874	-629.40	-190.09

2.4 Star Slots

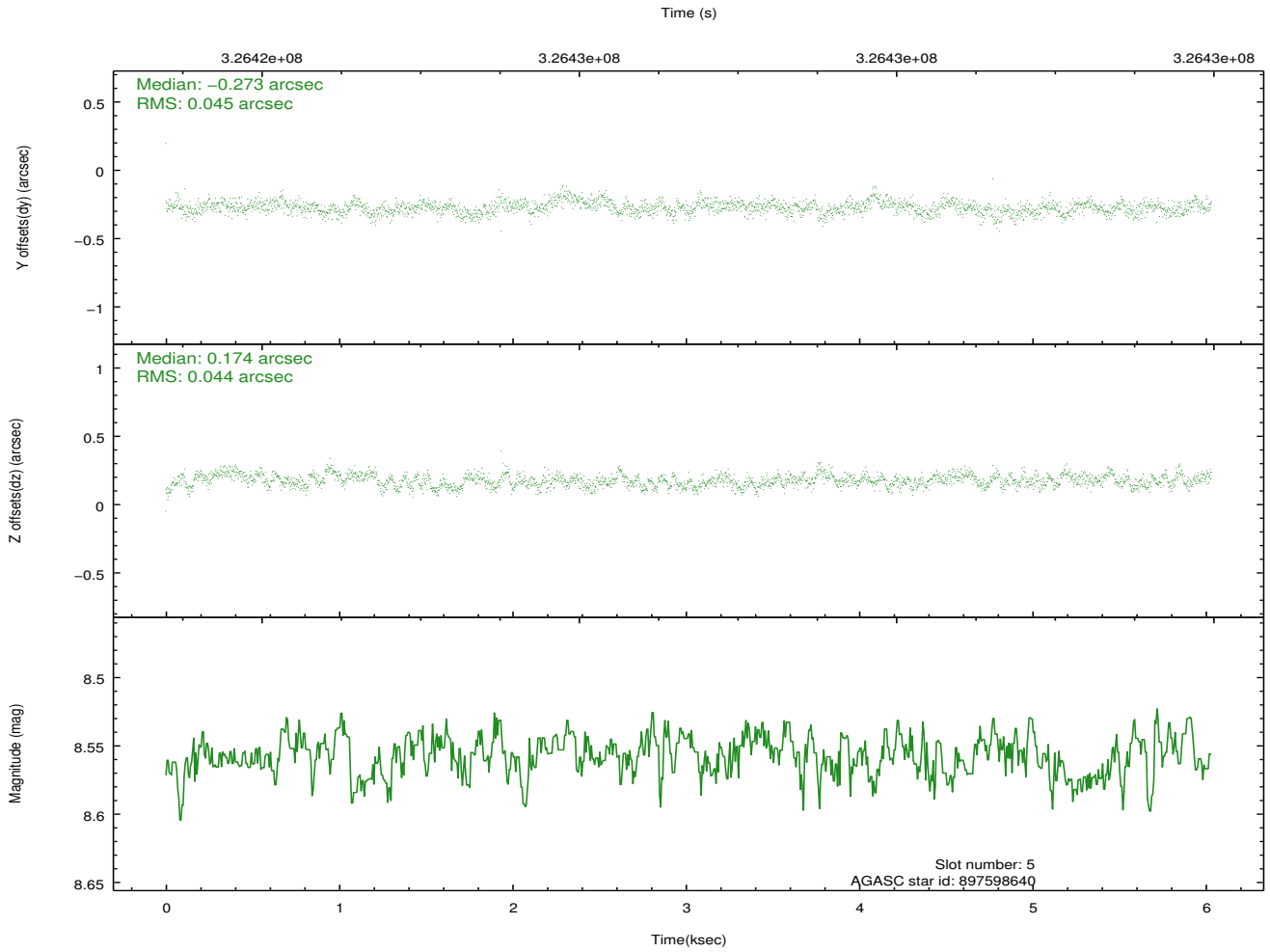
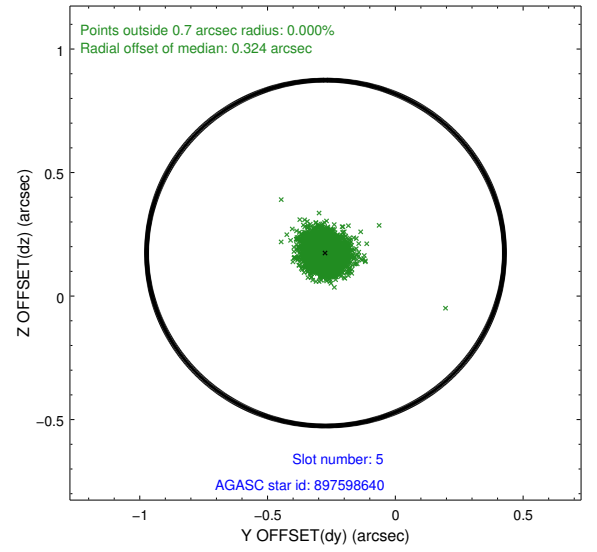
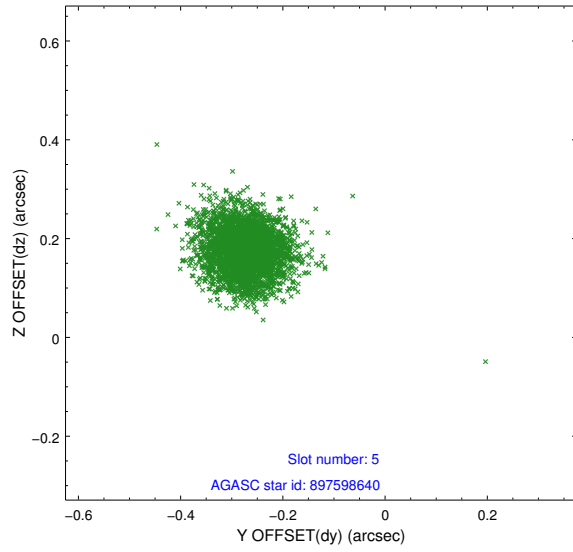
2.4.1 Slot 3



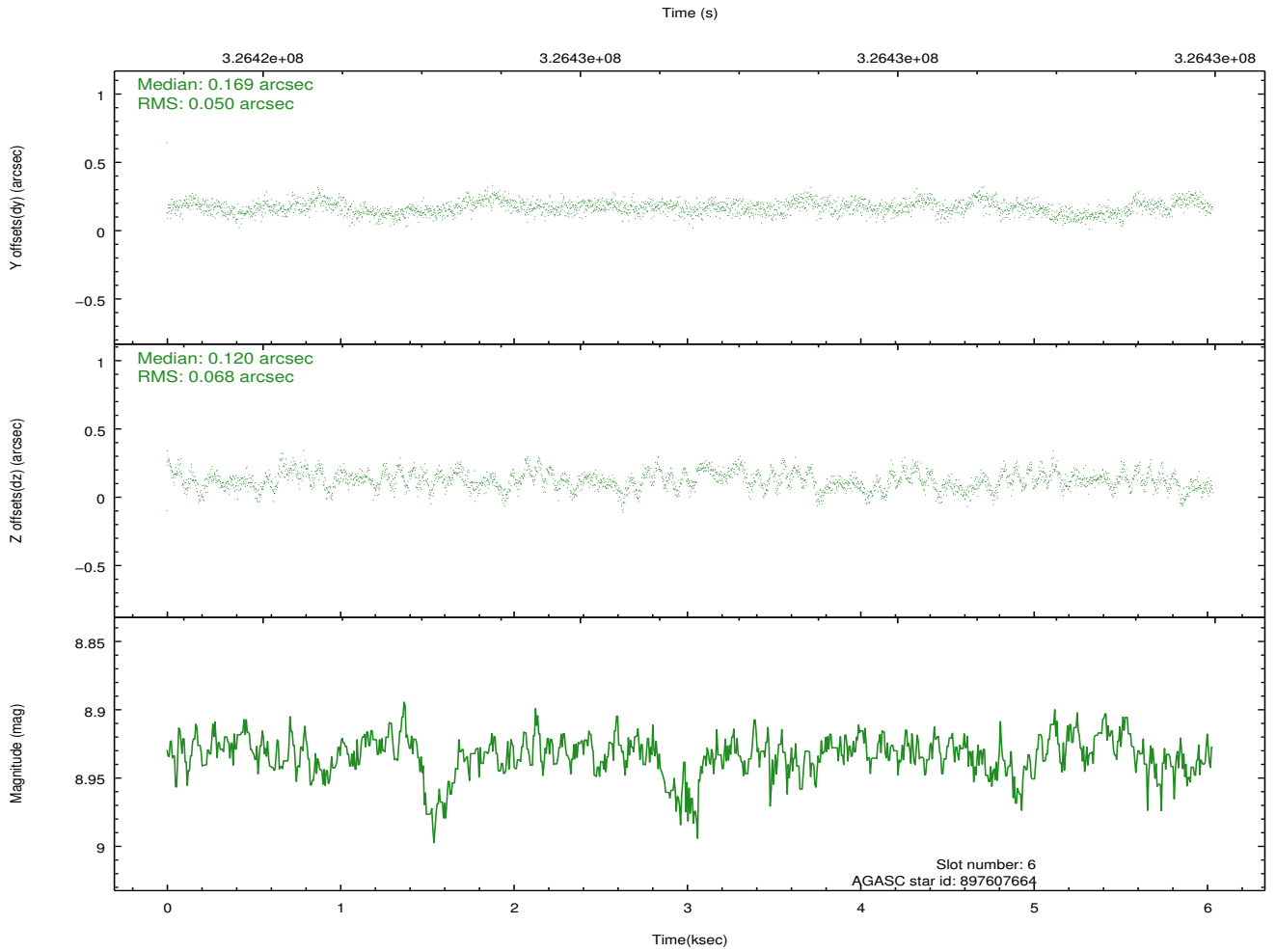
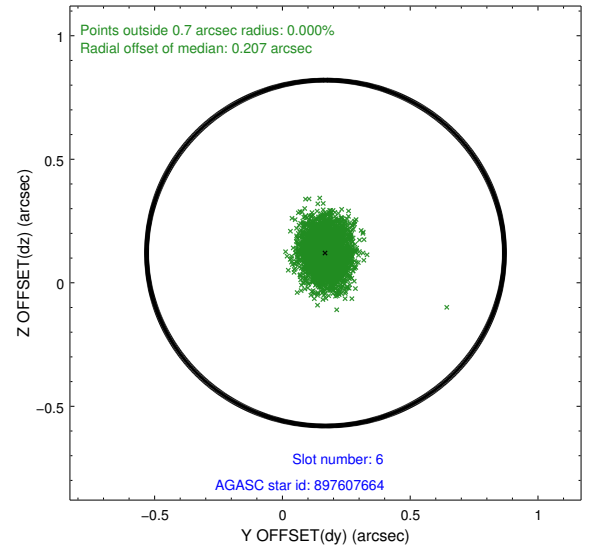
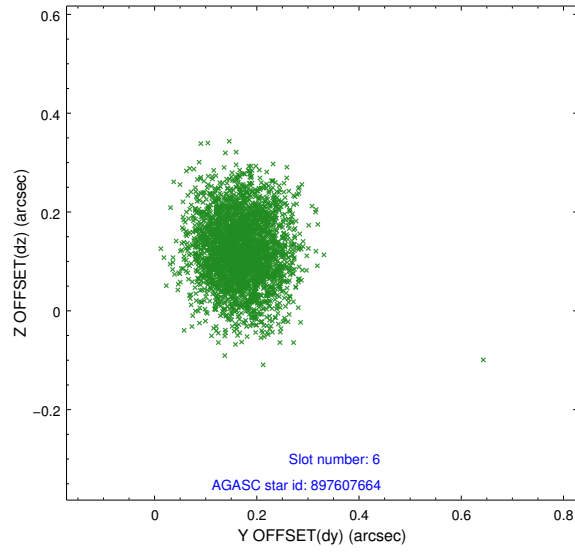
2.4.2 Slot 4



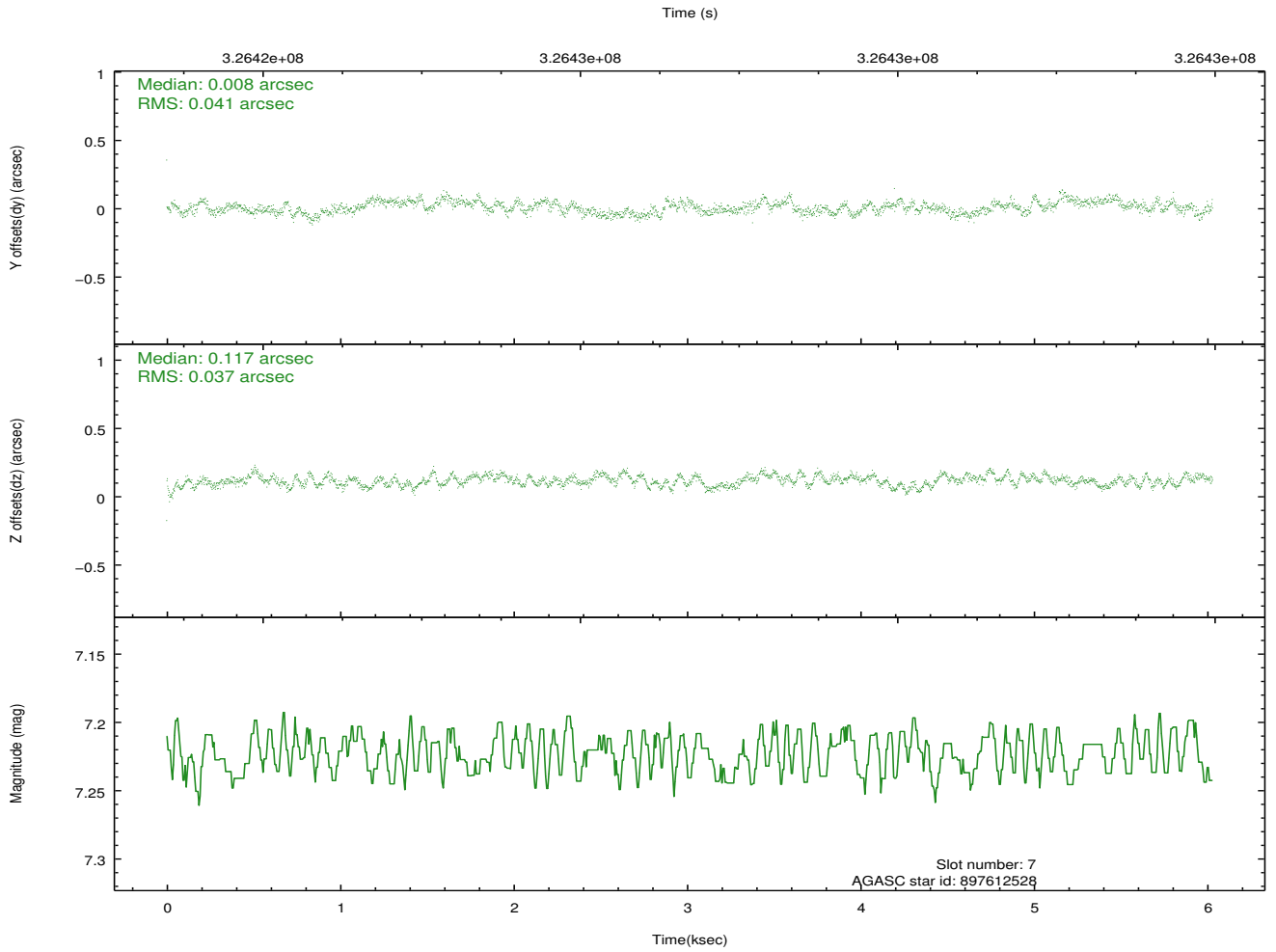
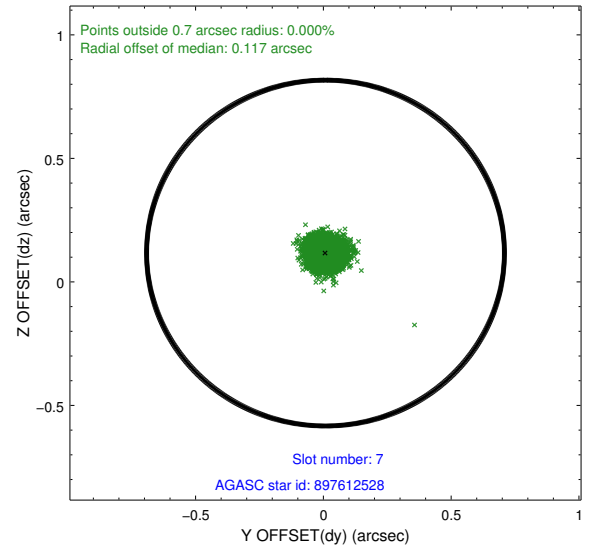
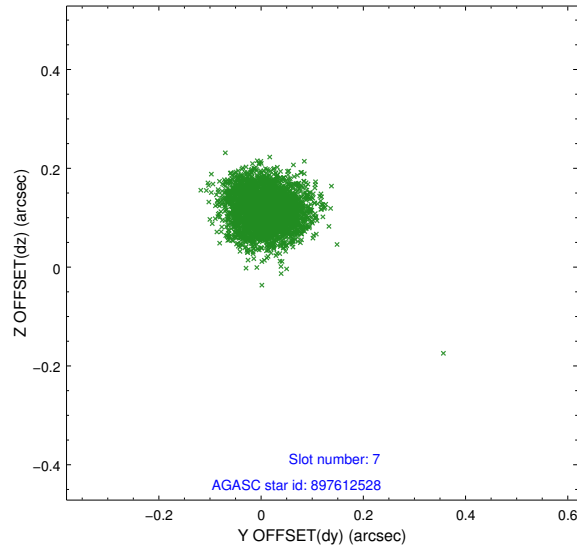
2.4.3 Slot 5



2.4.4 Slot 6

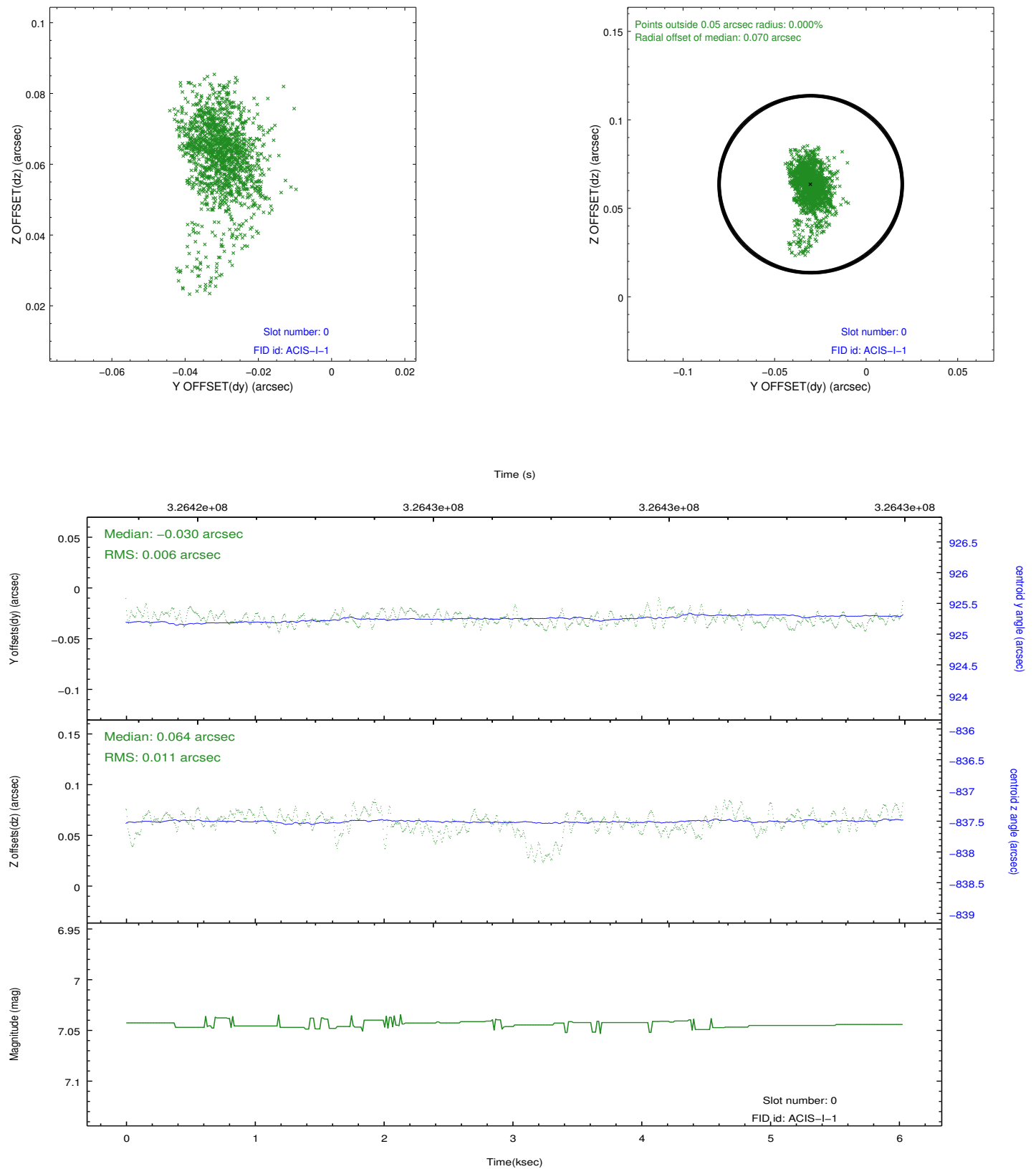


2.4.5 Slot 7

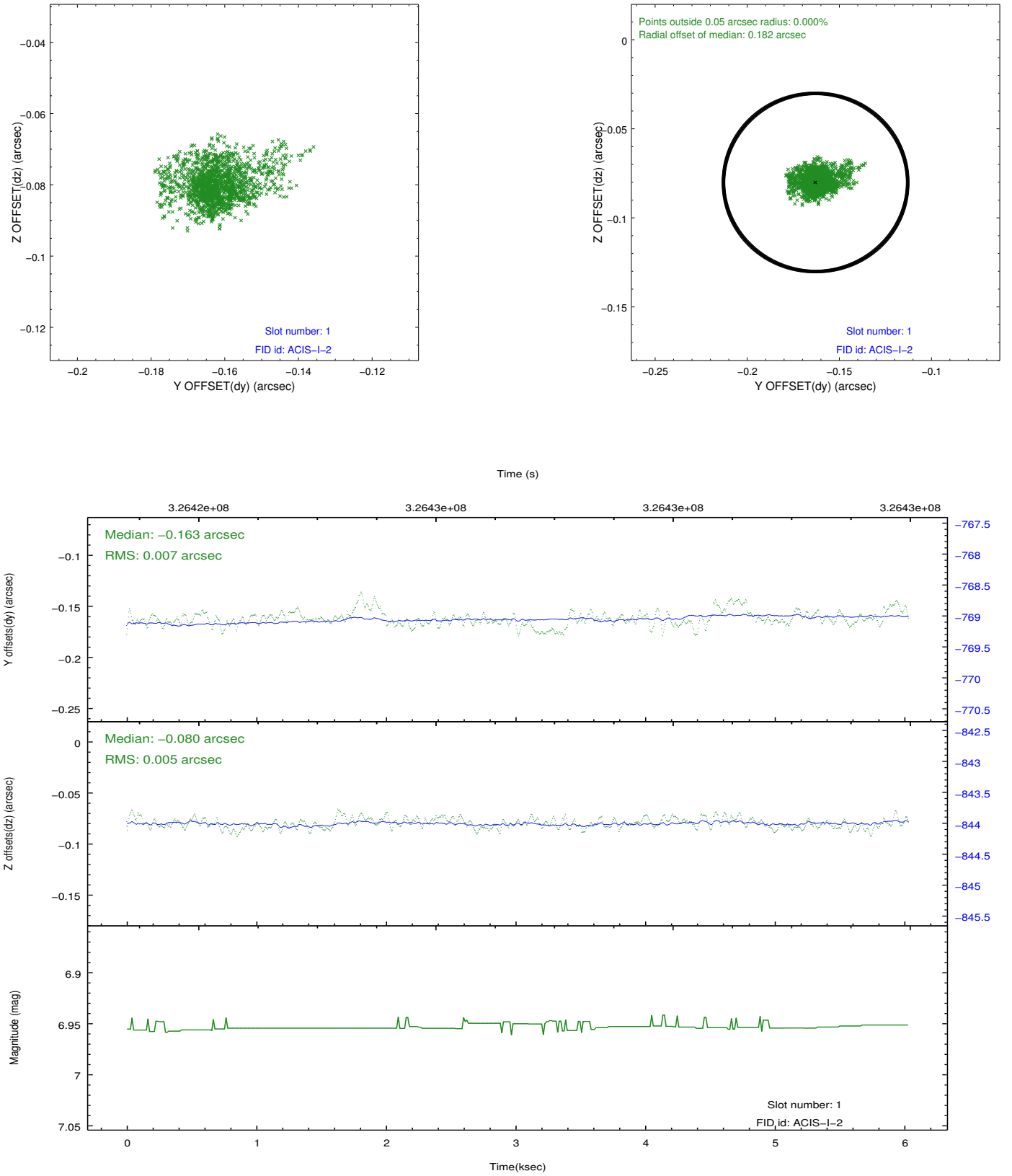


2.5 FID Slots

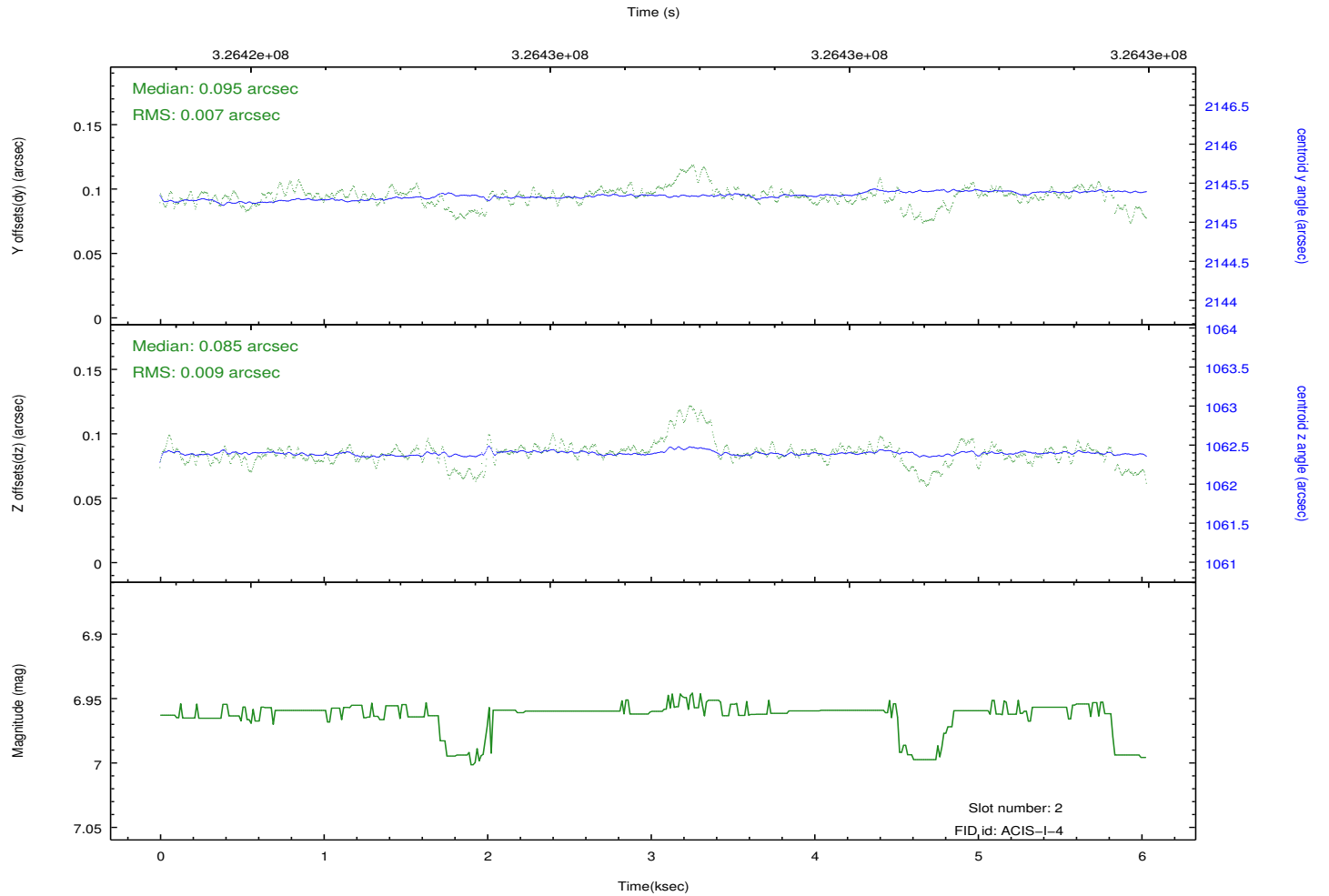
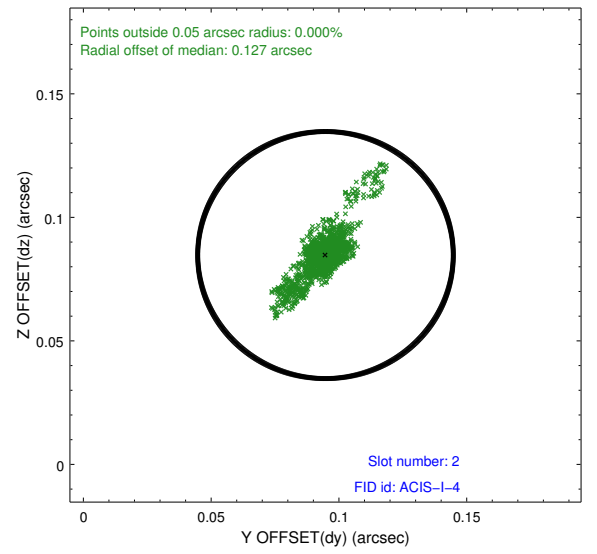
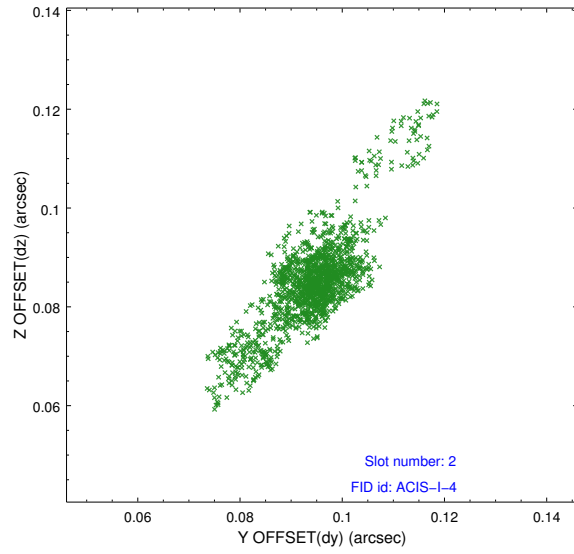
2.5.1 Slot 0



2.5.2 Slot 1



2.5.3 Slot 2



A Summary

A.1 Status

V&V Scientist	Jen Lauer
V&V Date (YYYY-MM-DD)	2012.05.15
V&V Edition	1
V&V Disposition and Status	OK
V&V Charge Time	4.95679998

A.2 Comments

Joint Proposal: NOAO