

V&V Reference Report

L2 ASCDS Version : 8.4.4

Observation 8647 - L2 Version 2
Chandra X-Ray Center

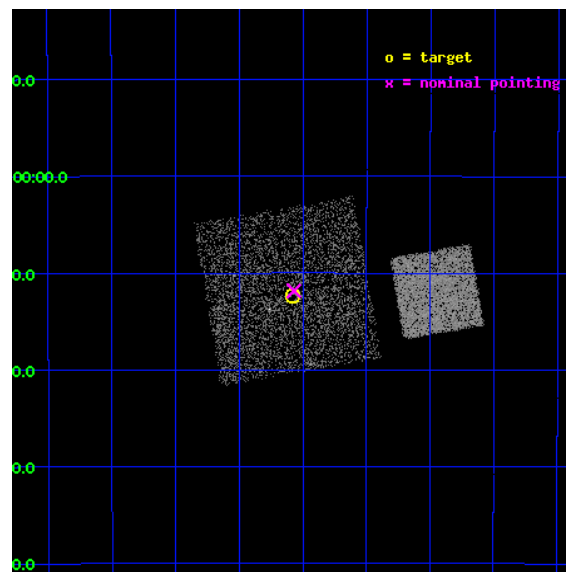
L2 Processing Date : May 14 2012

Contents

1	Front	2
2	OBI	3
2.1	OBI	3
2.1.1	Images	3
2.1.2	Bias	3
2.1.3	Parameters	4
2.1.4	Events	4
2.2	Compared Parameters	5
2.3	Aspect	6
2.4	Star Slots	9
2.4.1	Slot 3	9
2.4.2	Slot 4	10
2.4.3	Slot 5	11
2.4.4	Slot 6	12
2.4.5	Slot 7	13
2.5	FID Slots	14
2.5.1	Slot 0	14
2.5.2	Slot 1	15
2.5.3	Slot 2	16
A	Summary	17
A.1	Status	17
A.2	Comments	17

1 Front

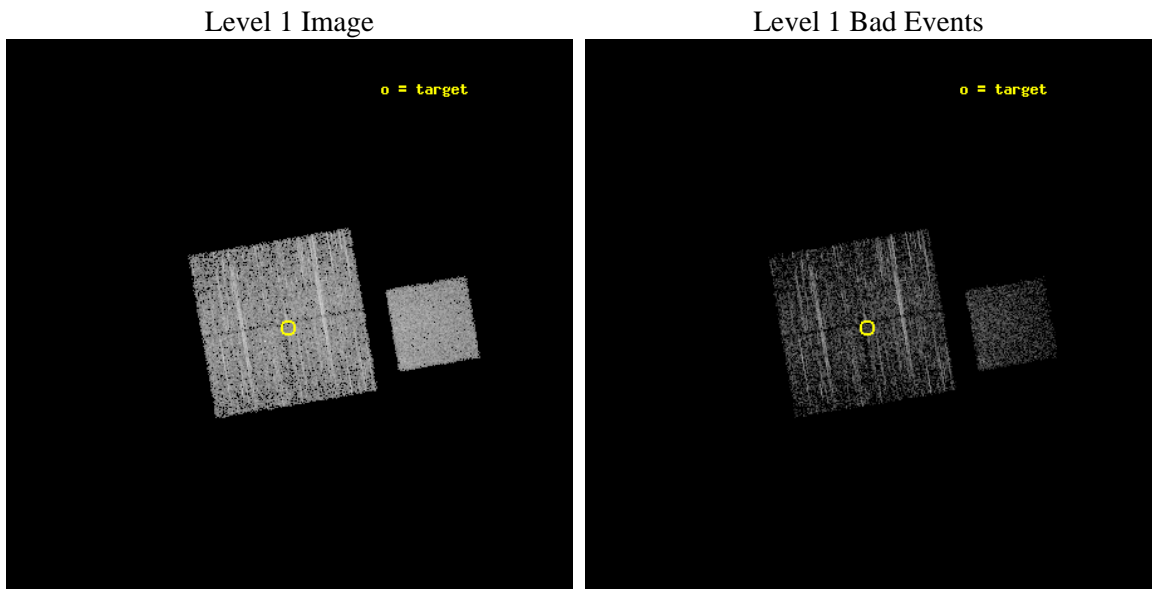
seq_num	400698	Sequence number
obs_id	8647	Observation id
title	The Galactic Bulge Survey: categorising the plethora of faint X-ray sources in the Galactic Bulge	Proposal title
observer	Prof Mariano Mendez	Principal investigator
object	GBSGTO1	Source name
dtcycle	0	
cycle	P	events from which exps? Prim/Second/Both
ra_targ	266.143754	Observer's specified target RA [deg]
dec_targ	-27.205194	Observer's specified target Dec [deg]
ra_nom	266.14253383356	Nominal RA [deg]
dec_nom	-27.197352129505	Nominal Dec [deg]
roll_nom	80.208140408107	Nominal Roll [deg]
revision	2	Processing version of data
ontime	2182.4000167847	Sum of GTIs [s]
livetime	2153.8853539059	Livetime [s]
ontime0	2179.2590065598	Sum of GTIs [s]
ontime1	2182.4000167847	Sum of GTIs [s]
ontime2	2182.4000167847	Sum of GTIs [s]
ontime3	2182.4000167847	Sum of GTIs [s]
ontime7	2182.4000167847	Sum of GTIs [s]
l2events	15708	Number of level 2 events



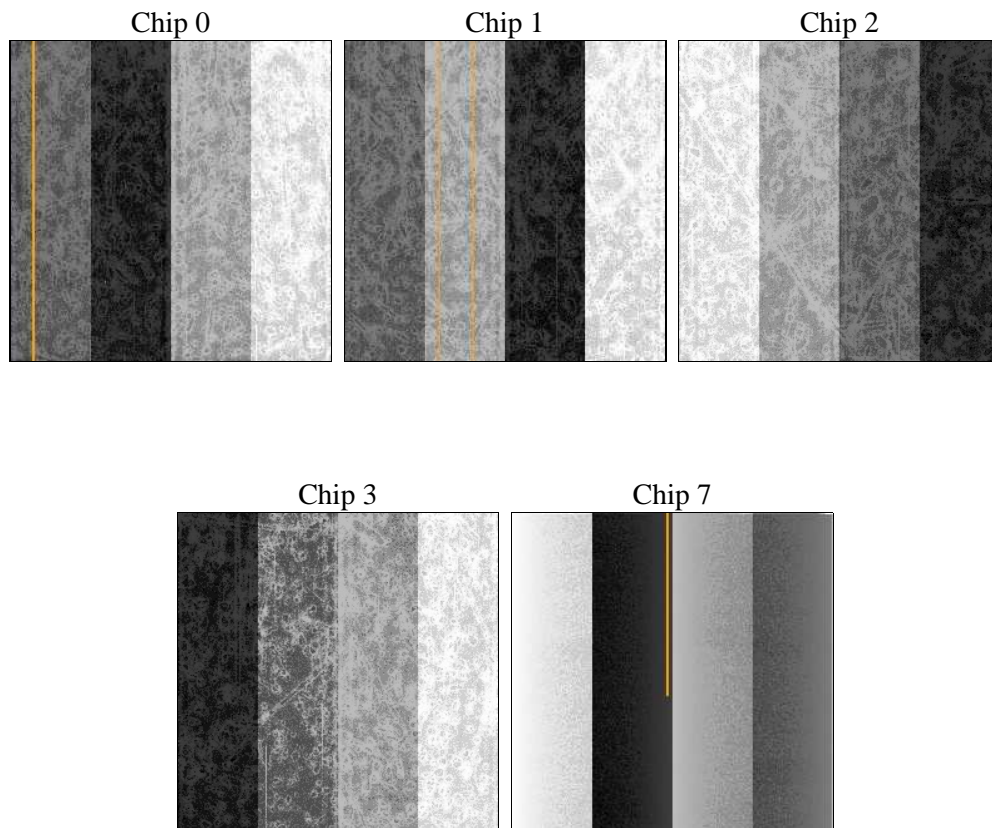
2 OBI

2.1 OBI

2.1.1 Images



2.1.2 Bias



2.1.3 Parameters

obi_num	1	Obi number	sched_exp_time	2000.000000	[s] Scheduled observation exposure time
ascdsver	8.4.4	Processing system revision	ontime	2182.4000167847	Sum of GTIs [s]
caldsver	4.4.9	 	ontime0	2179.2590065598	Sum of GTIs [s]
date	2012-05-14T23:52:56	Date and time of file creation	ontime1	2182.4000167847	Sum of GTIs [s]
revision	2	Processing version of data	ontime2	2182.4000167847	Sum of GTIs [s]
			ontime3	2182.4000167847	Sum of GTIs [s]
			ontime7	2182.4000167847	Sum of GTIs [s]
			l1events	101807	Number of level 1 events

2.1.4 Events

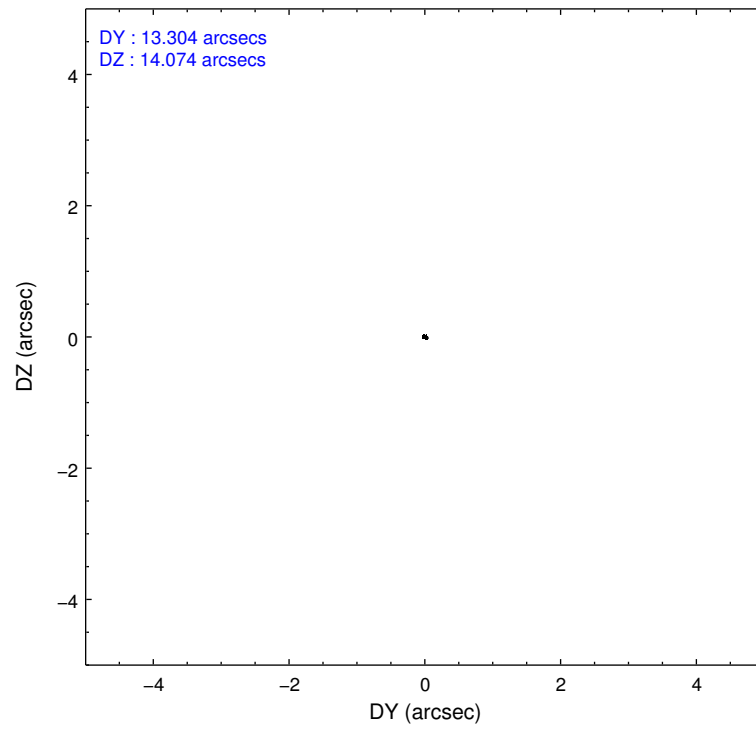
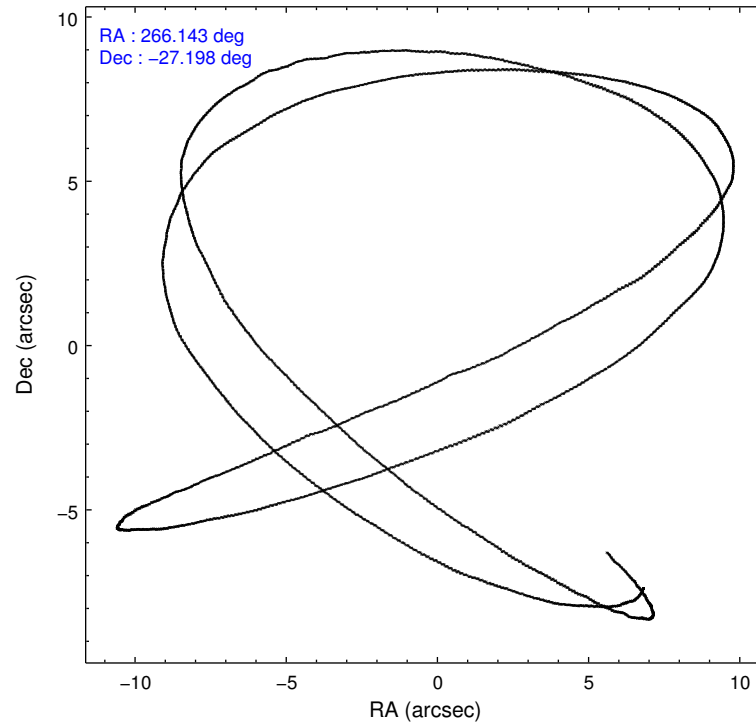
	ccd 0	ccd 1	ccd 2	ccd 3	ccd 7
level 1 events	18258	18762	22464	19559	22764
rejected events	16268	16370	20529	17693	13641
rejected %	89%	87%	91%	90%	59%

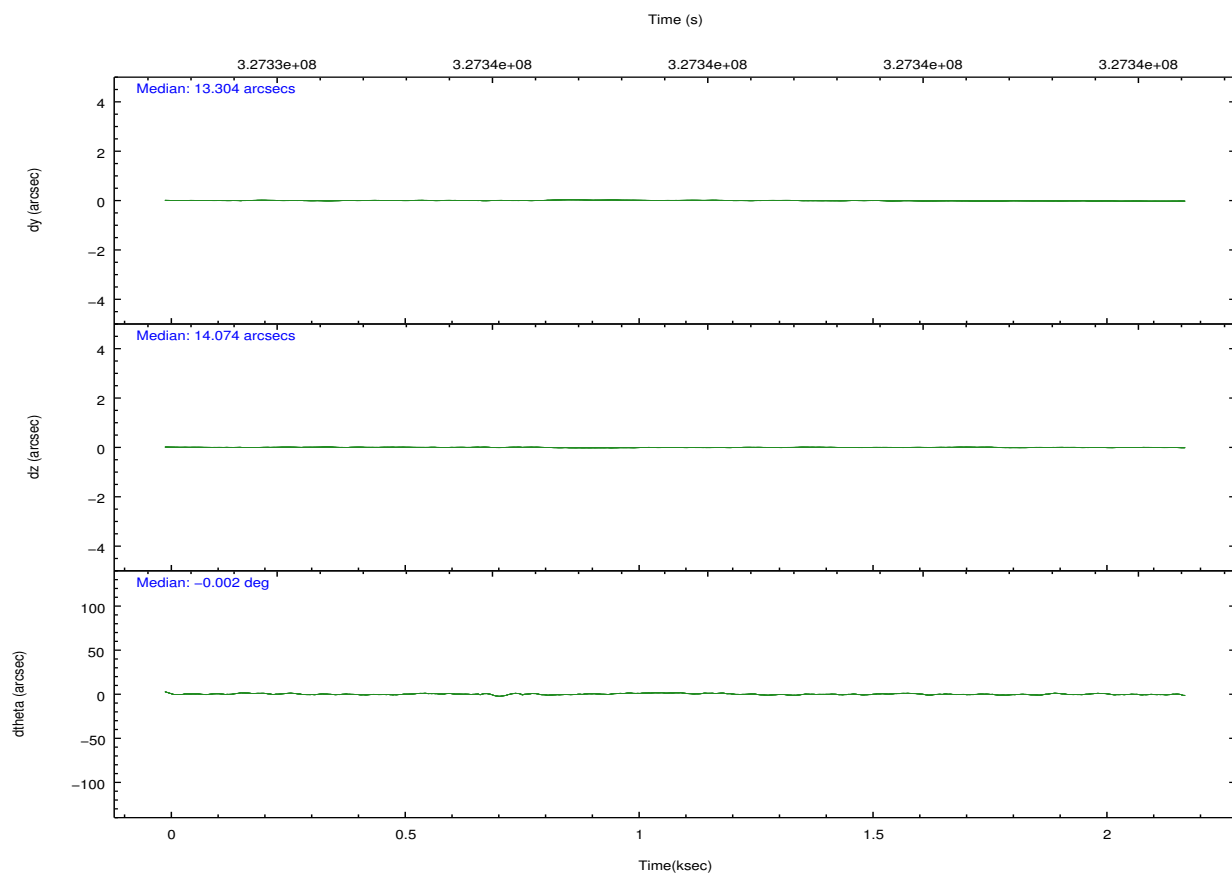
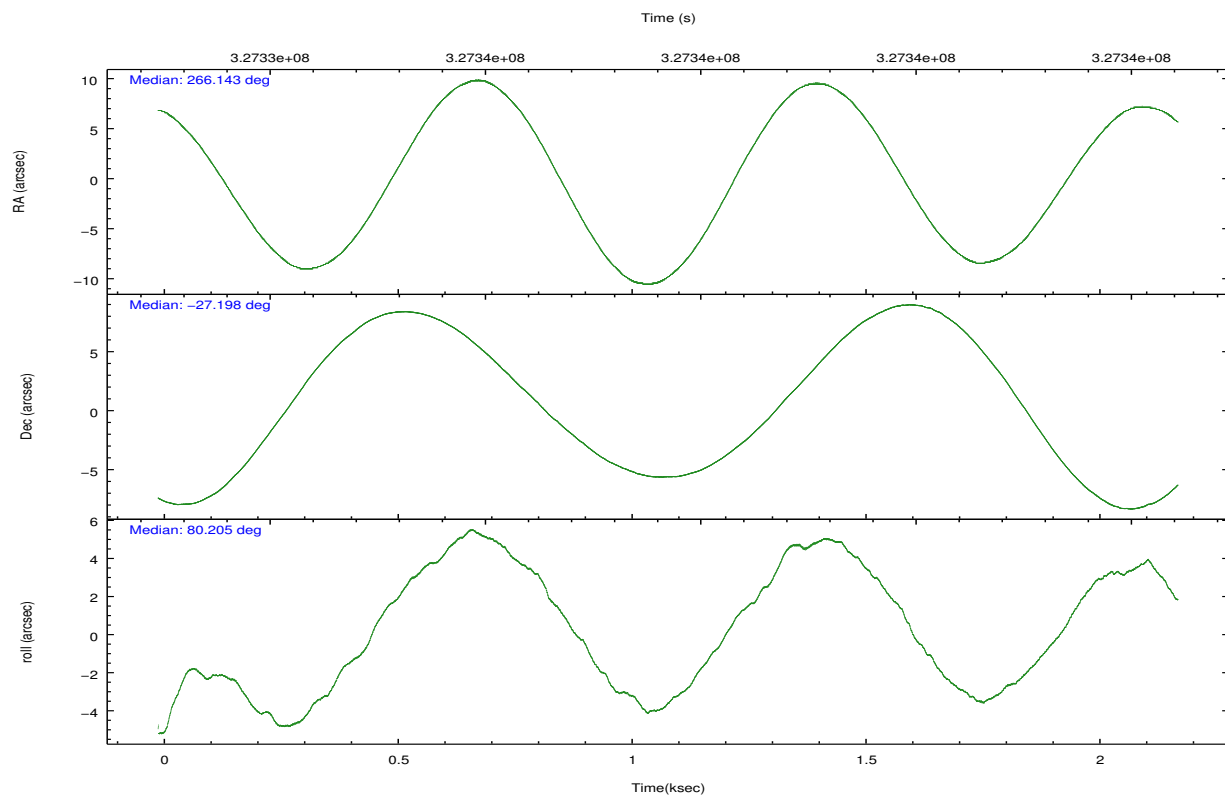
	ccd 0	ccd 1	ccd 2	ccd 3	ccd 7
grade 0 events	923	1156	908	928	934
	5%	6%	4%	4%	4%
grade 1 events	11	9	16	18	30
	0%	0%	0%	0%	0%
grade 2 events	506	593	479	448	2185
	2%	3%	2%	2%	9%
grade 3 events	243	270	231	223	963
	1%	1%	1%	1%	4%
grade 4 events	214	275	253	222	1011
	1%	1%	1%	1%	4%
grade 5 events	690	757	631	792	2404
	3%	4%	2%	4%	10%
grade 6 events	403	458	368	376	5375
	2%	2%	1%	1%	23%
grade 7 events	15268	15244	19578	16552	9862
	83%	81%	87%	84%	43%

2.2 Compared Parameters

Parameter	Planned	Actual	Parameter	Planned	Actual
Instrument	ACIS	ACIS	Obspar format version number	7	7
Detector	ACIS-01237	ACIS-01237	Obspar file type	PREDICTED	ACTUAL
Grating	NONE	NONE	Obspar update status	NONE	UPDATED
Data mode	VFAINT	VFAINT	CCD I0 on	Y	Y
Observation mode	POINTING	POINTING	CCD I1 on	Y	Y
[deg] Pointing RA	266.153367	266.1425338335645	CCD I2 on	Y	Y
[deg] Pointing Dec	-27.222948	-27.19735212950507	CCD I3 on	Y	Y
[deg] Pointing Roll	80.004392	80.20814040810663	CCD S0 on	N	N
[mm] SIM focus pos	-0.782348	-0.7809083437167272	CCD S1 on	N	N
[mm] SIM defocus	0	0.001439871863259334	CCD S2 on	N	N
[mm] SIM translation stage pos	-233.592463	-233.5874344608287	CCD S3 on	O1	Y
[mm] SIM translation stage offset	0	-0.005018542100998502	CCD S4 on	N	N
[s] Observation start time (MET)	327334503.184000	327334127.42642	CCD S5 on	N	N
Observation start date	2008-05-16T14:13:58	2008-05-16T14:08:47	Number of optional ACIS chips dropped	0	0
[s] Observation end time (MET)	327336503.184000	327336637.65154	On-chip summing requested	N	N
Observation end date	2008-05-16T14:47:18	2008-05-16T14:50:37	Subarray requested	NONE	NONE
Read mode	TIMED	TIMED	Alternating exposures requested	N	N
			[s] Primary exposure time	0.000000	3.1

2.3 Aspect



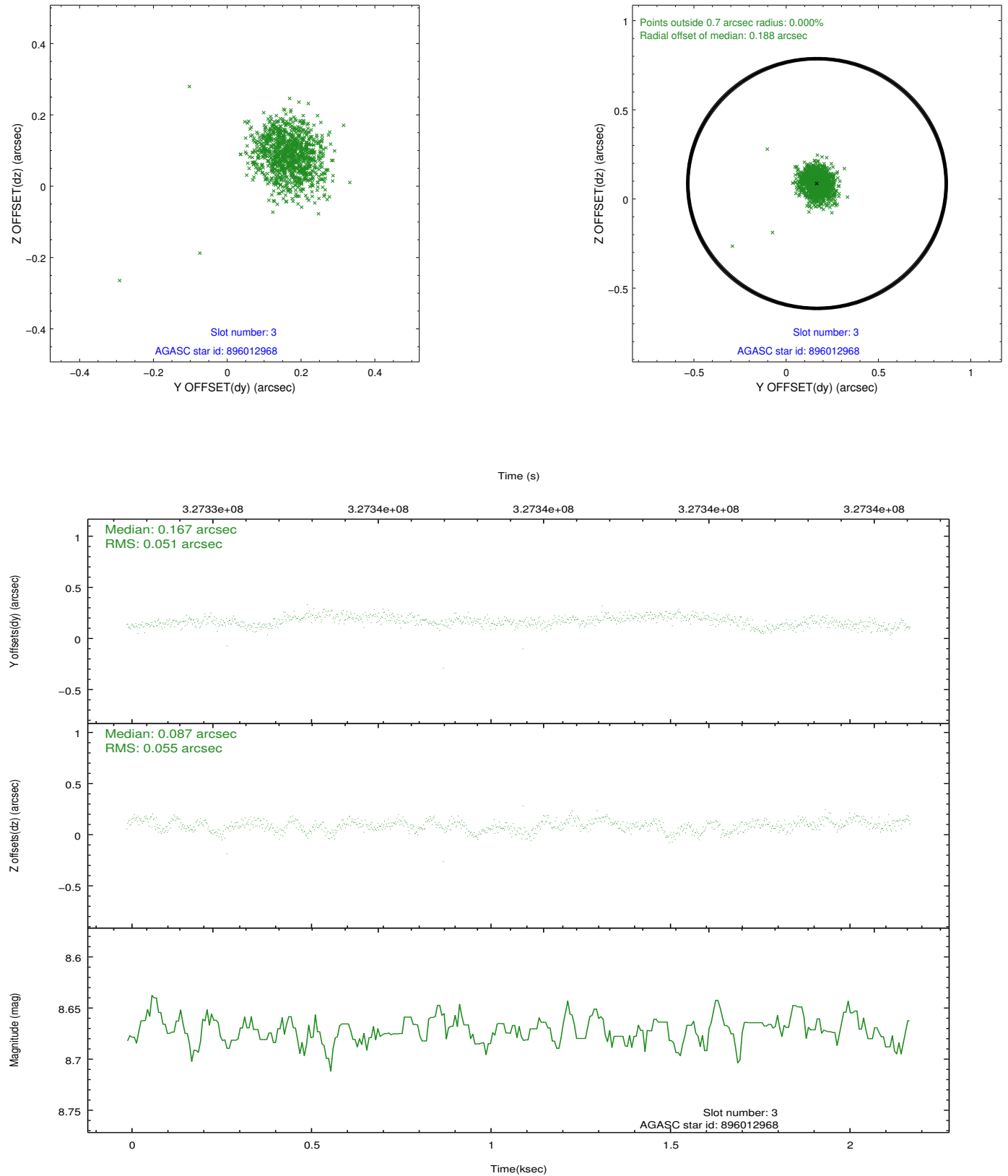


Slot Statistics

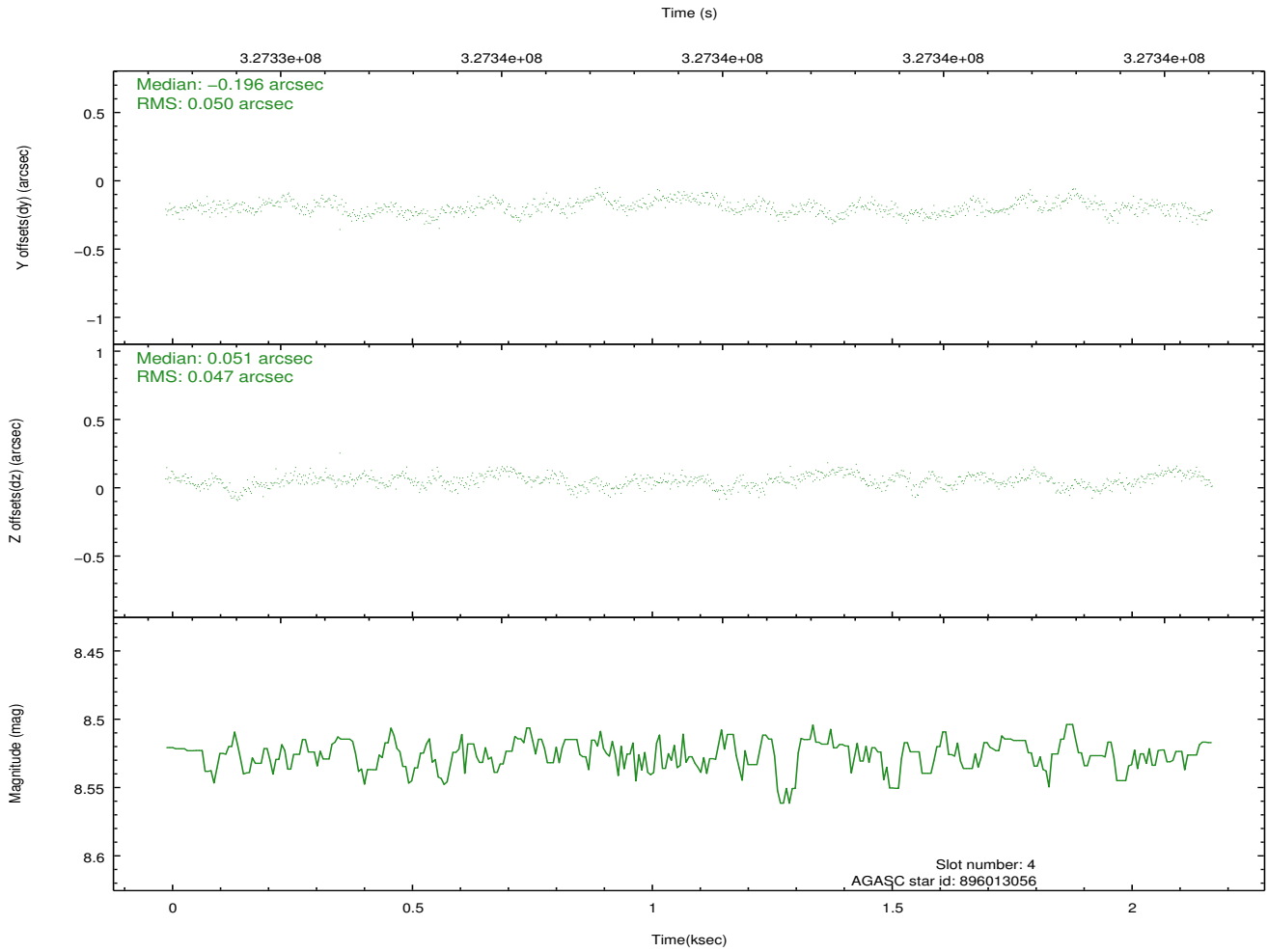
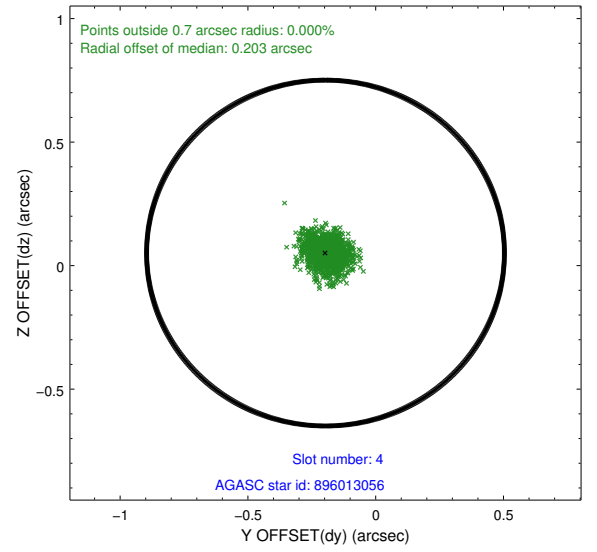
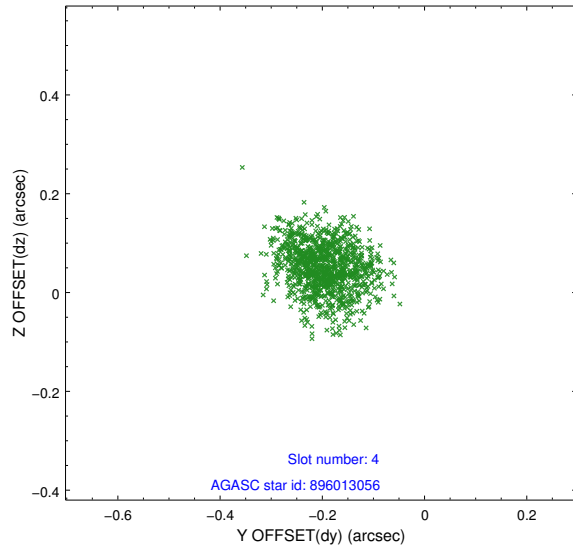
slot	status	id	mag	n_pts	med_dy	med_dz	dr1	dr2	ra	dec	mean_y	mean_z
0	FID	ACIS-I-1	7.06	532	-0.027	0.050	0.011	0.022	0.000000	0.000000	926.18	-837.59
1	FID	ACIS-I-4	6.99	532	0.155	0.002	0.009	0.016	0.000000	0.000000	2148.05	1060.67
2	FID	ACIS-I-5	7.04	533	-0.226	0.019	0.007	0.013	0.000000	0.000000	-1818.19	1061.91
3	GUIDE	896012968	8.67	1064	0.167	0.087	0.078	0.122	266.634547	-27.600471	-1073.51	-1748.01
4	GUIDE	896013056	8.53	1065	-0.196	0.051	0.075	0.117	266.762141	-26.954413	1286.55	-1758.22
5	GUIDE	896014528	7.69	1065	-0.005	-0.063	0.068	0.099	266.628858	-27.438607	-501.29	-1632.92
6	GUIDE	896013040	7.34	1065	-0.049	-0.071	0.061	0.107	266.506589	-26.972299	1084.49	-961.08
7	GUIDE	896011536	9.39	1064	0.083	-0.006	0.119	0.200	267.007333	-26.766562	2087.80	-2420.33

2.4 Star Slots

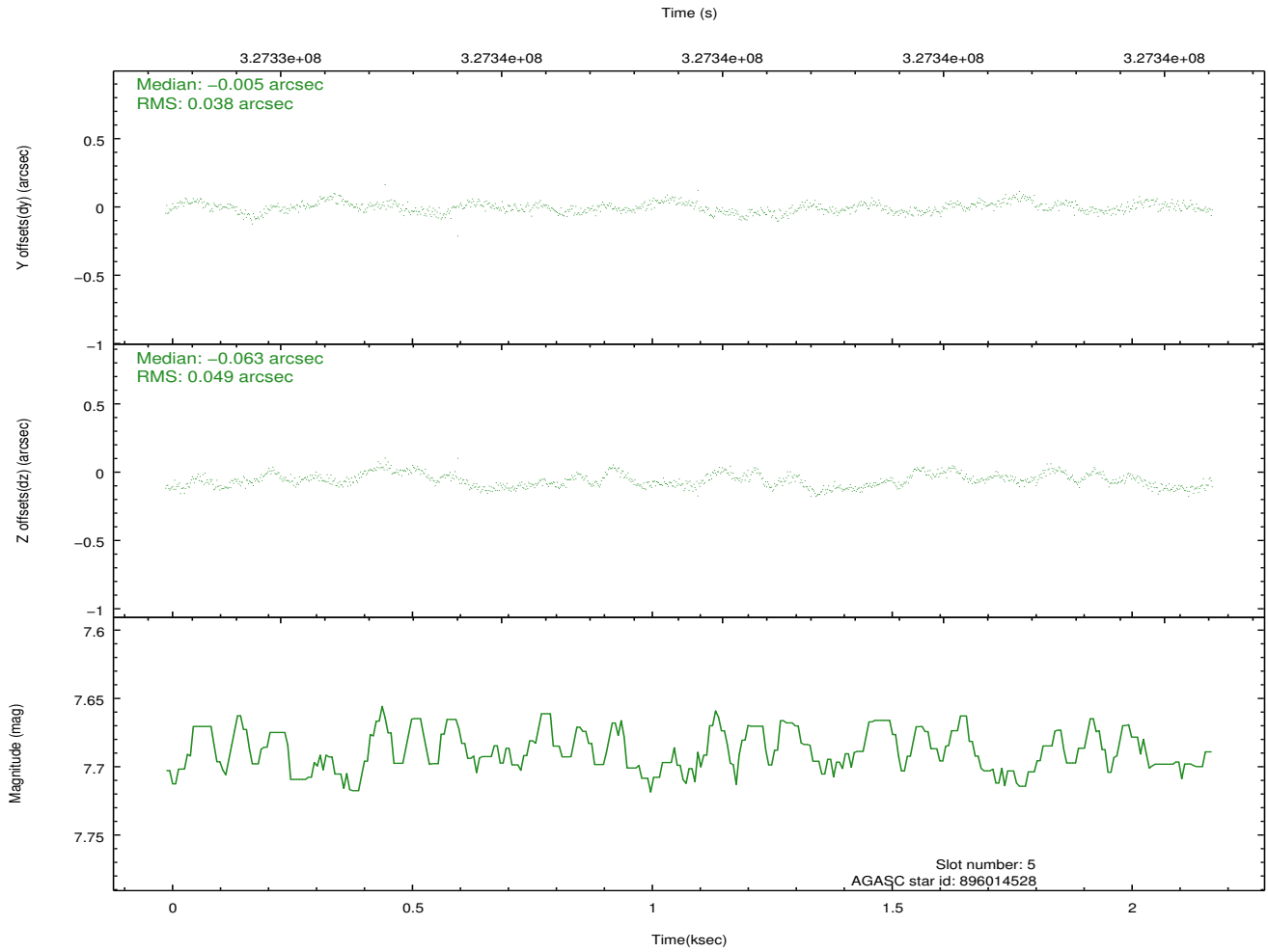
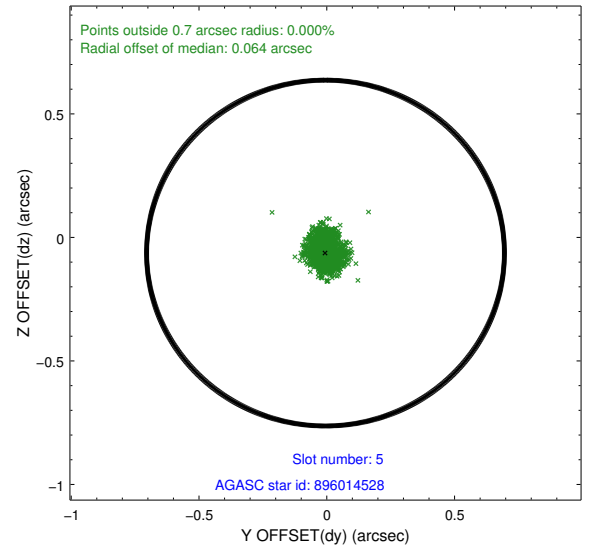
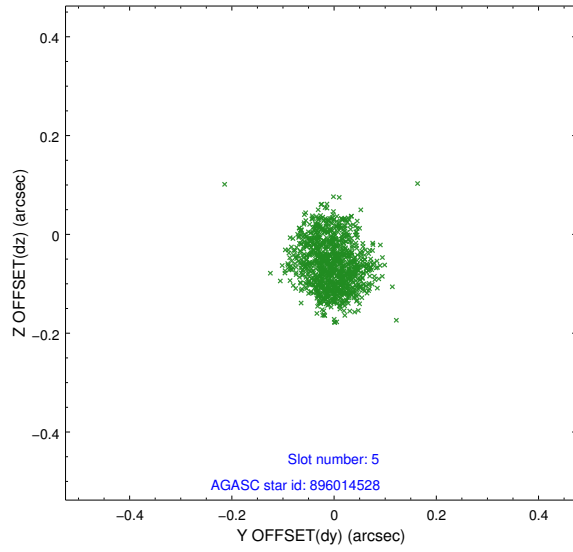
2.4.1 Slot 3



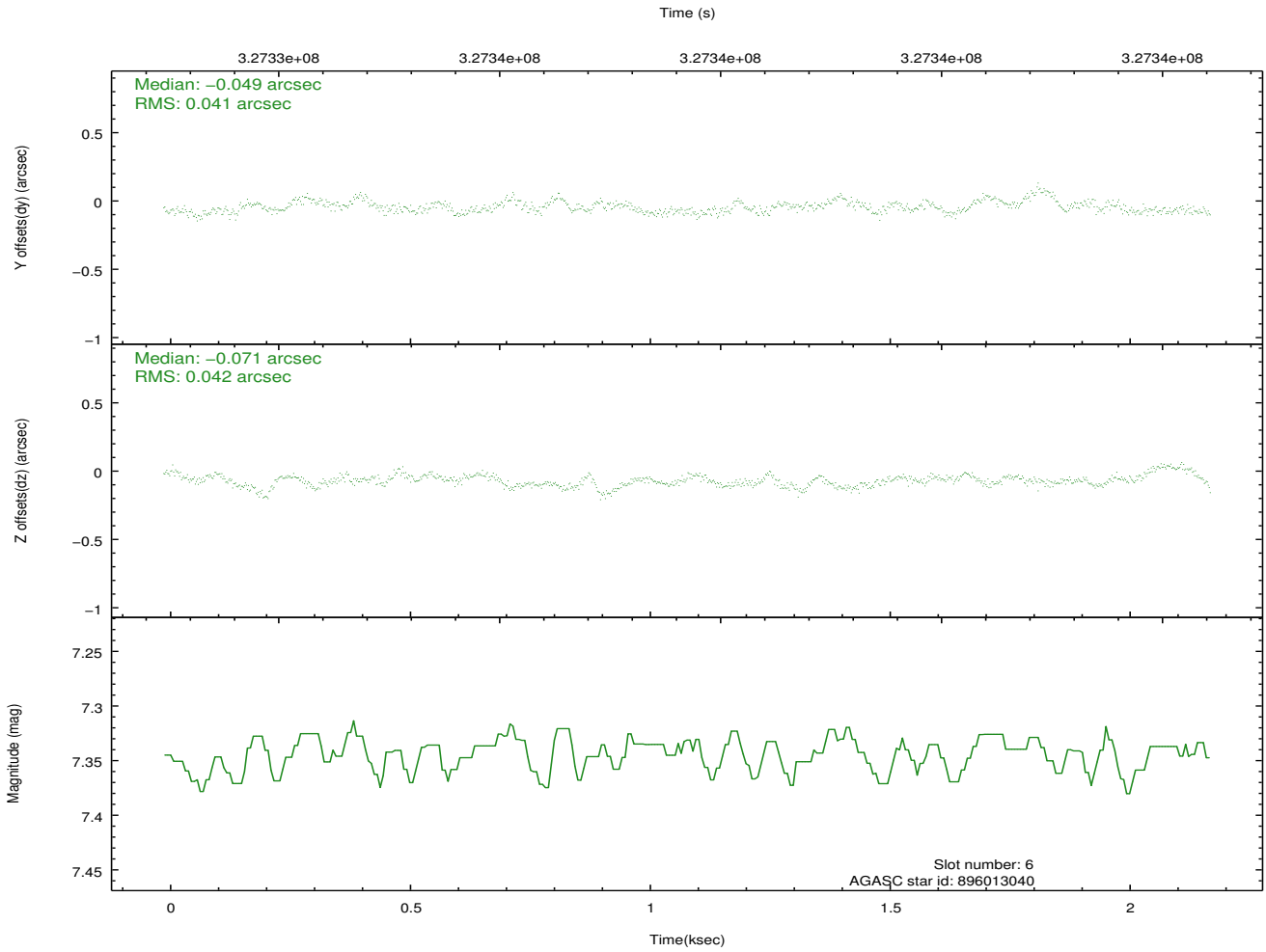
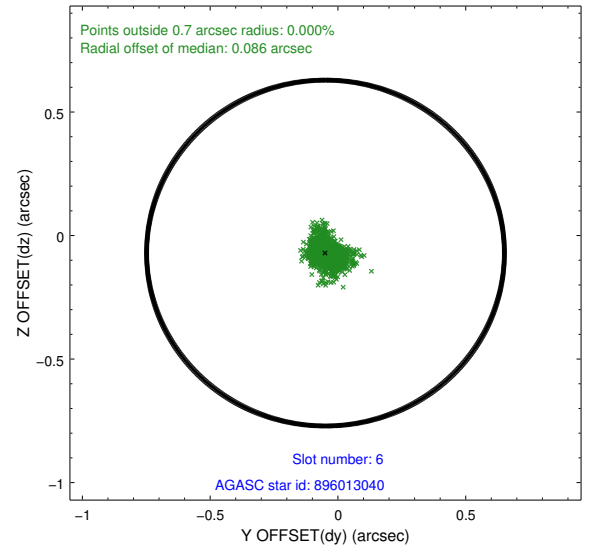
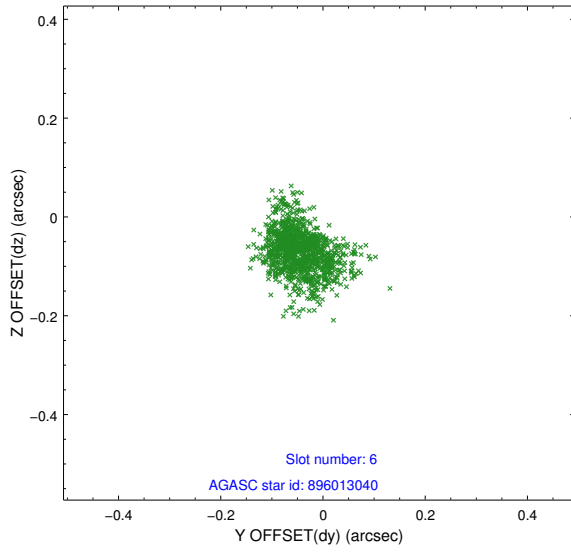
2.4.2 Slot 4



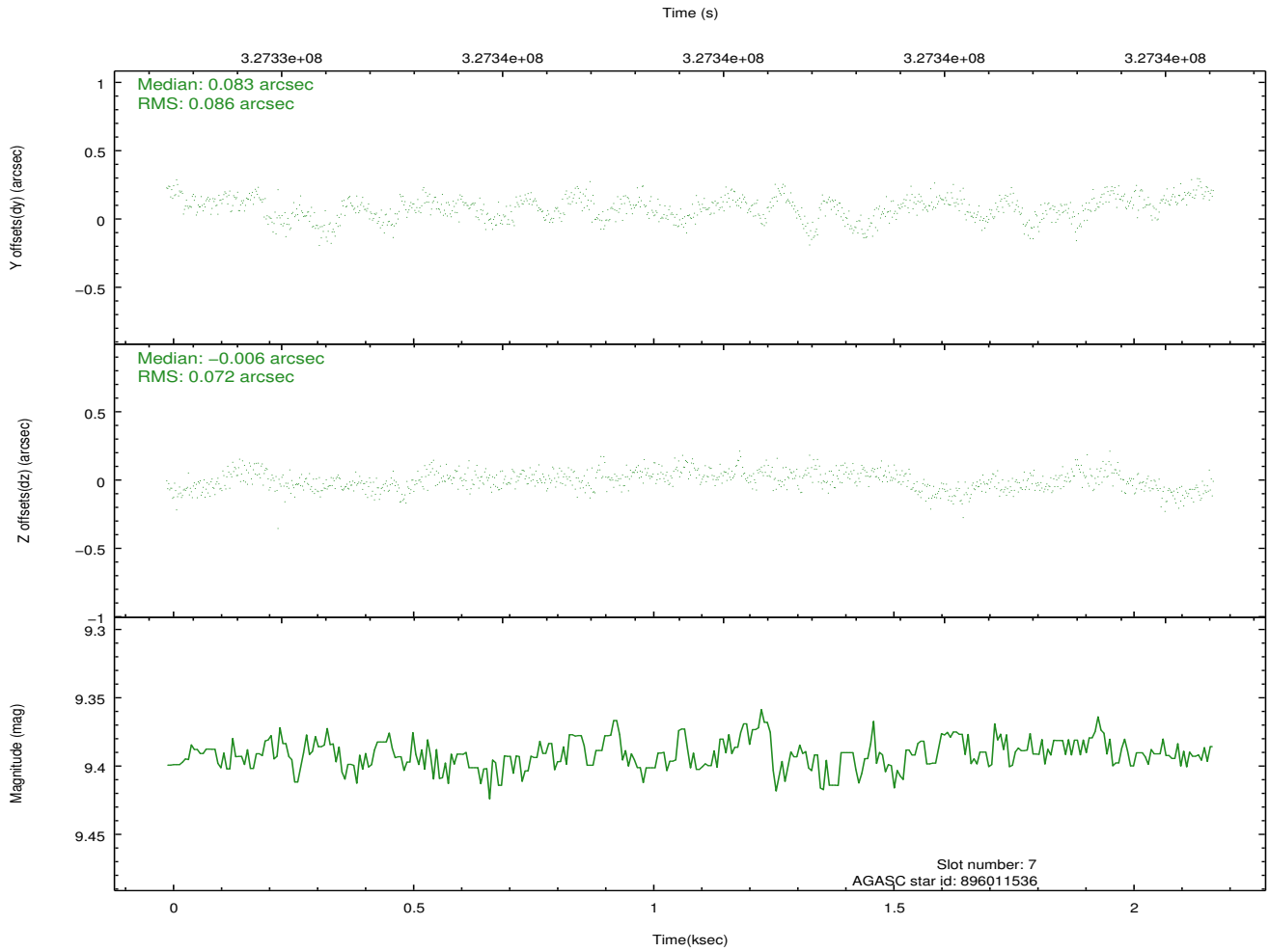
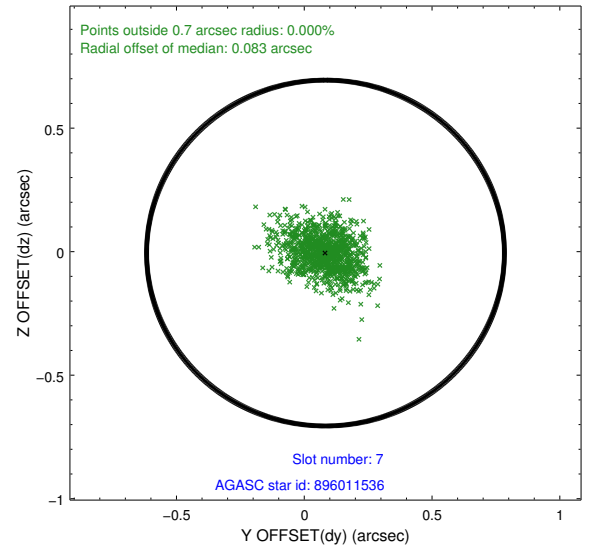
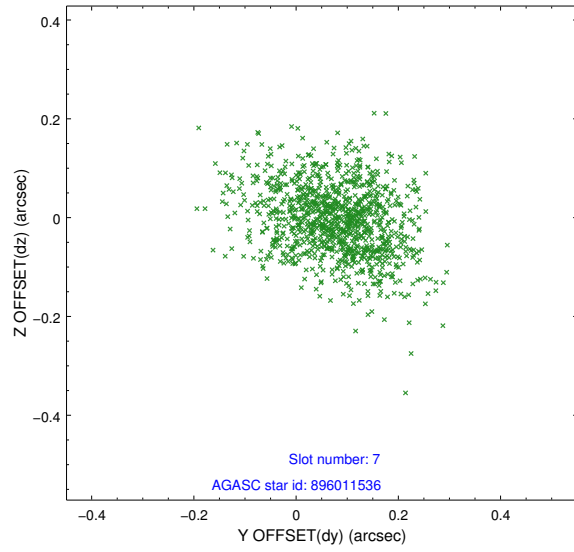
2.4.3 Slot 5



2.4.4 Slot 6

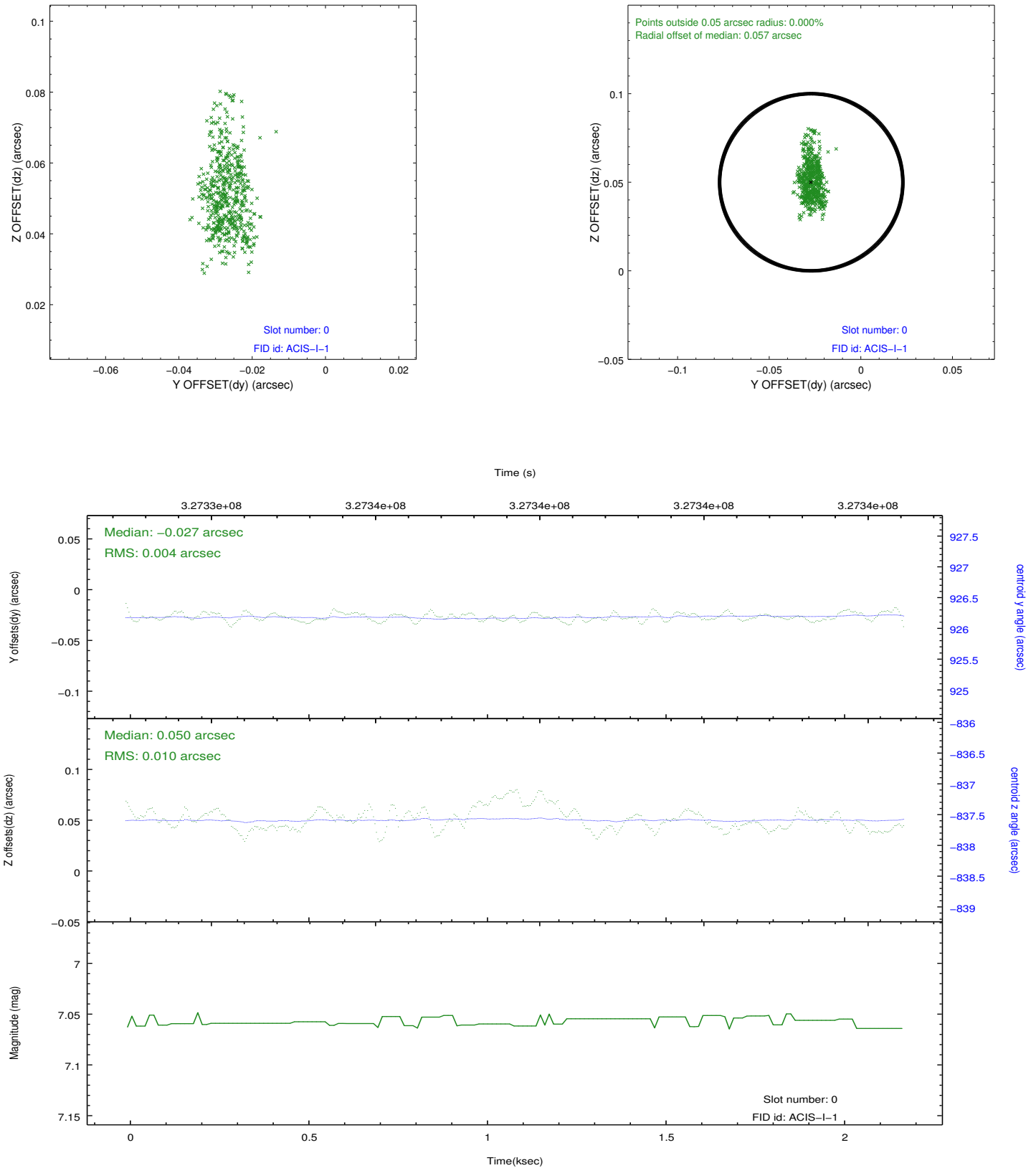


2.4.5 Slot 7

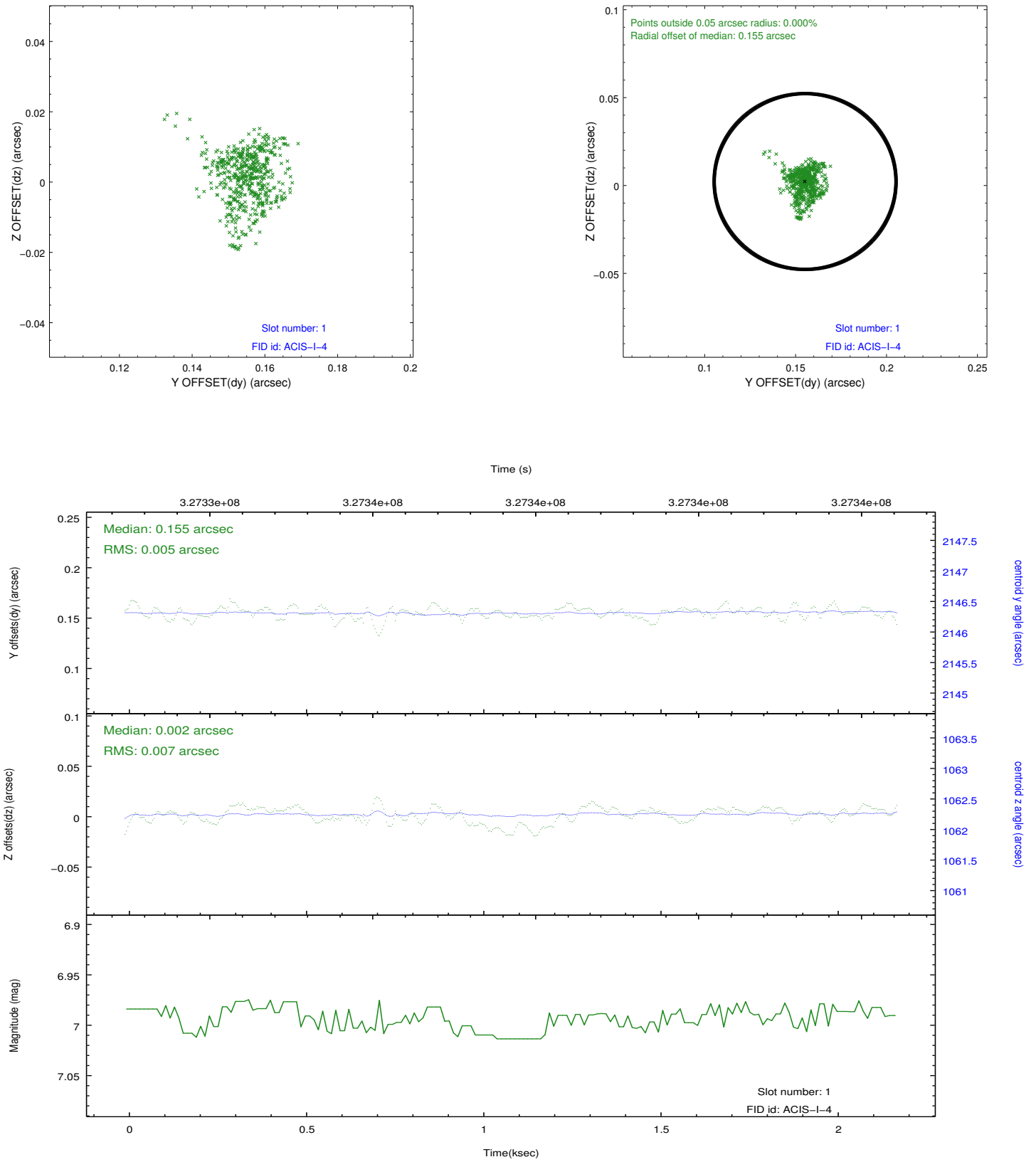


2.5 FID Slots

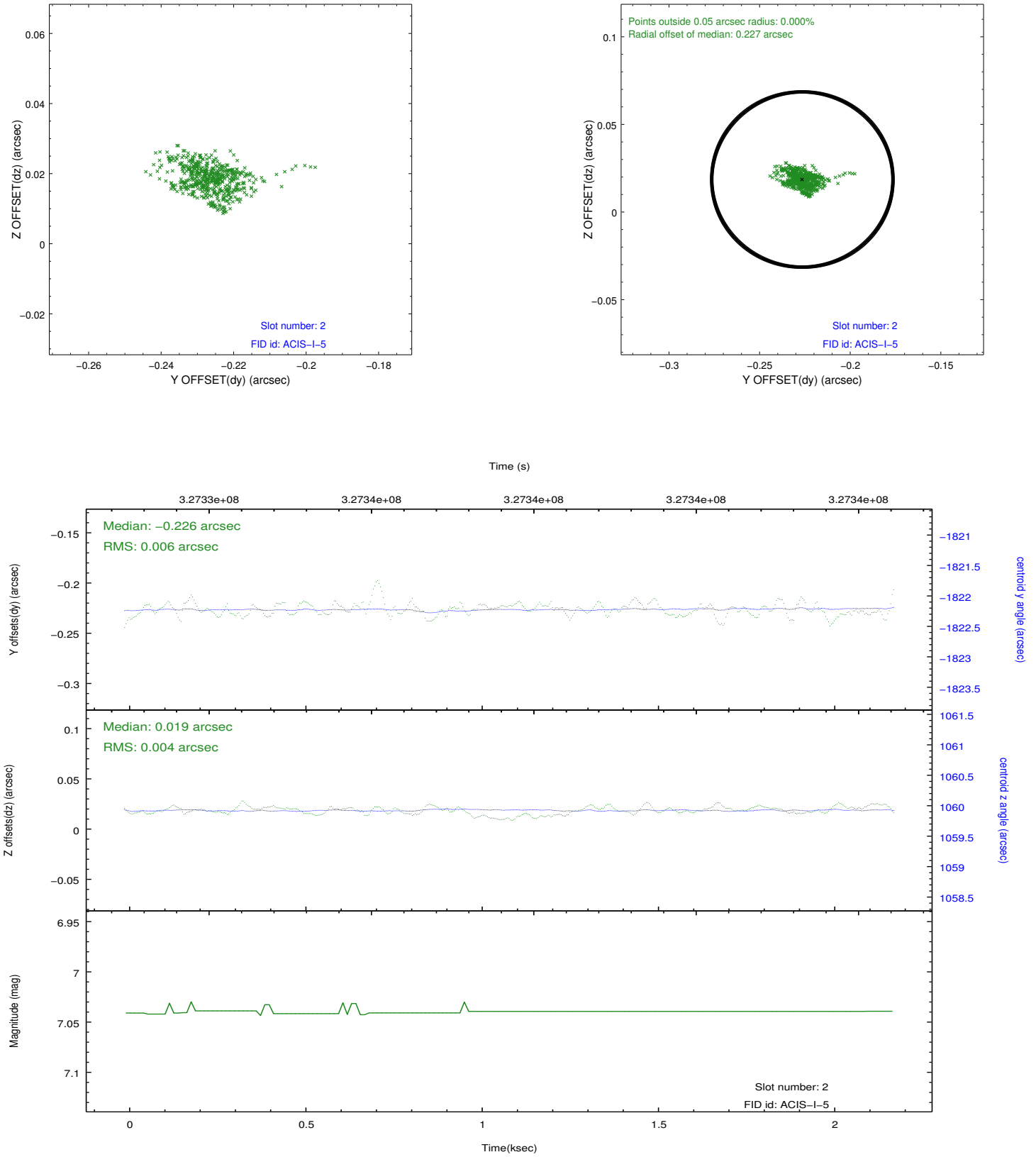
2.5.1 Slot 0



2.5.2 Slot 1



2.5.3 Slot 2



A Summary

A.1 Status

V&V Scientist	Beth Sundheim
V&V Date (YYYY-MM-DD)	2012.05.18
V&V Edition	1
V&V Disposition and Status	OK
V&V Charge Time	2.18240001

A.2 Comments