

# V&V Reference Report

## L2 ASCDS Version : 8.4.4

Observation 7867 - L2 Version 2  
Chandra X-Ray Center

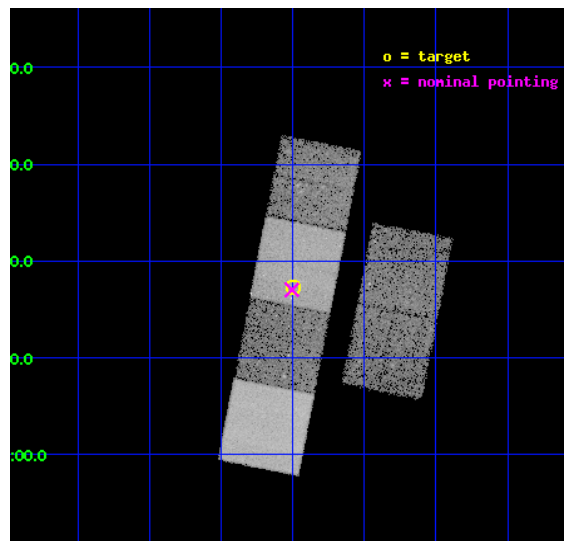
L2 Processing Date : May 2 2012

## Contents

<b>1</b>	<b>Front</b>	<b>2</b>
<b>2</b>	<b>OBI</b>	<b>3</b>
2.1	OBI . . . . .	3
2.1.1	Images . . . . .	3
2.1.2	Bias . . . . .	3
2.1.3	Parameters . . . . .	4
2.1.4	Events . . . . .	4
2.2	Compared Parameters . . . . .	5
2.3	Aspect . . . . .	6
2.4	Star Slots . . . . .	9
2.4.1	Slot 3 . . . . .	9
2.4.2	Slot 4 . . . . .	10
2.4.3	Slot 5 . . . . .	11
2.4.4	Slot 6 . . . . .	12
2.4.5	Slot 7 . . . . .	13
2.5	FID Slots . . . . .	14
2.5.1	Slot 0 . . . . .	14
2.5.2	Slot 1 . . . . .	15
2.5.3	Slot 2 . . . . .	16
<b>A</b>	<b>Summary</b>	<b>17</b>
A.1	Status . . . . .	17
A.2	Comments . . . . .	17

# 1 Front

seq_num	701531	Sequence number
obs_id	7867	Observation id
title	Rapid Follow-Up Observations of Tidal Disruption Events Discovered in the GALEX Deep Imaging Survey	Proposal title
observer	Dr. Suvi Gezari	Principal investigator
object	Tidal Disruption Event	Source name
dtcycle	0	&#160
cycle	P	events from which exps? Prim/Second/Both
ra_targ	352.997917	Observer's specified target RA [deg]
dec_targ	0.287389	Observer's specified target Dec [deg]
ra_nom	353.00122187157	Nominal RA [deg]
dec_nom	0.28381810898185	Nominal Dec [deg]
roll_nom	281.14585360081	Nominal Roll [deg]
revision	2	Processing version of data
ontime	22140.799917579	Sum of GTIs [s]
livetime	21860.439777433	Livetime [s]
ontime2	22134.317936957	Sum of GTIs [s]
ontime3	22140.799917579	Sum of GTIs [s]
ontime5	22140.799917579	Sum of GTIs [s]
ontime6	22137.558927357	Sum of GTIs [s]
ontime7	22140.799917579	Sum of GTIs [s]
ontime8	22140.799917579	Sum of GTIs [s]
l2events	167578	Number of level 2 events

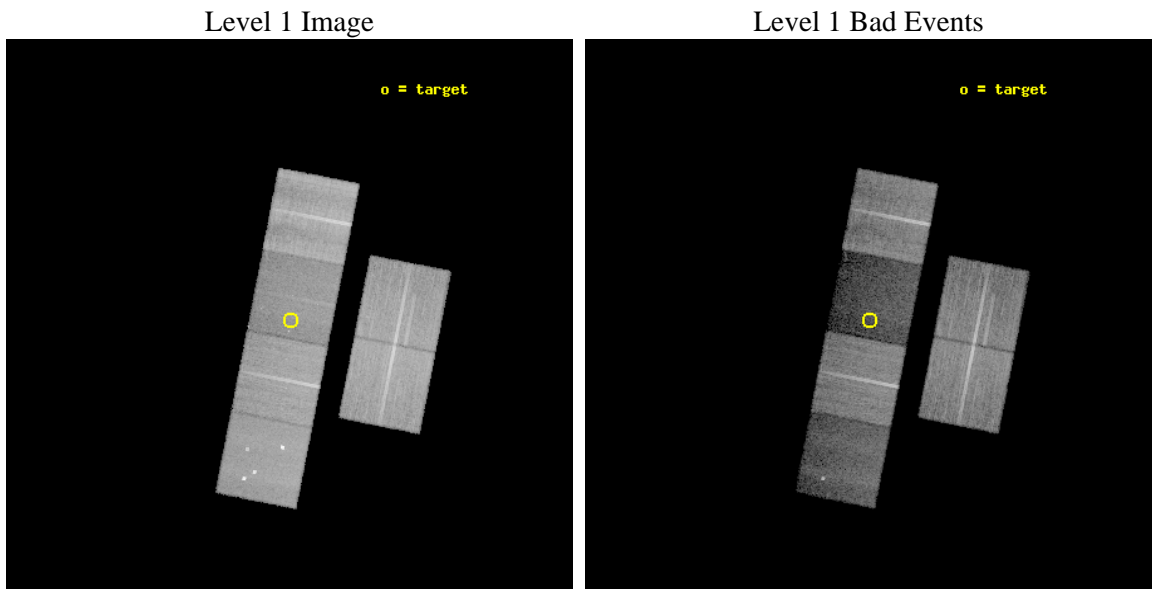




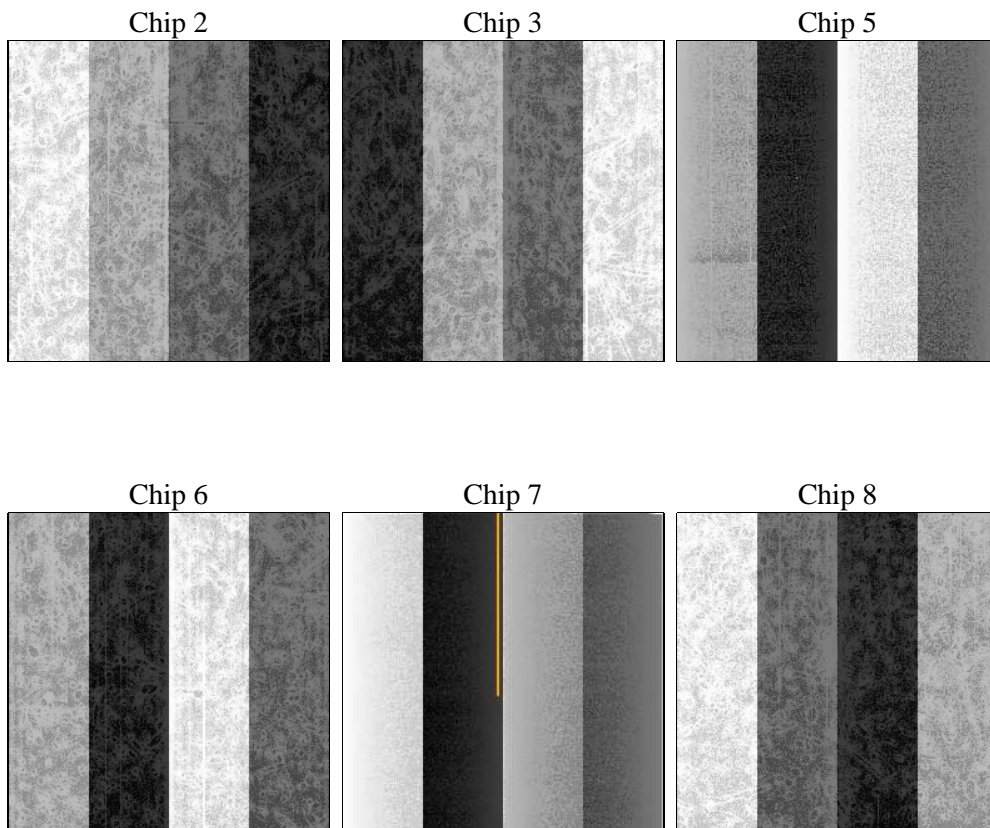
## 2 OBI

### 2.1 OBI

#### 2.1.1 Images



#### 2.1.2 Bias



### 2.1.3 Parameters

obi_num	0	Obi number	sched_exp_time	22000.000000	[s] Scheduled observation exposure time
ascdsver	8.4.4	Processing system revision	ontime	22140.799917579	Sum of GTIs [s]
caldsver	4.4.9	&#160	ontime2	22134.317936957	Sum of GTIs [s]
date	2012-05-02T09:38:35	Date and time of file creation	ontime3	22140.799917579	Sum of GTIs [s]
revision	2	Processing version of data	ontime5	22140.799917579	Sum of GTIs [s]
			ontime6	22137.558927357	Sum of GTIs [s]
			ontime7	22140.799917579	Sum of GTIs [s]
			ontime8	22140.799917579	Sum of GTIs [s]
			l1events	881996	Number of level 1 events

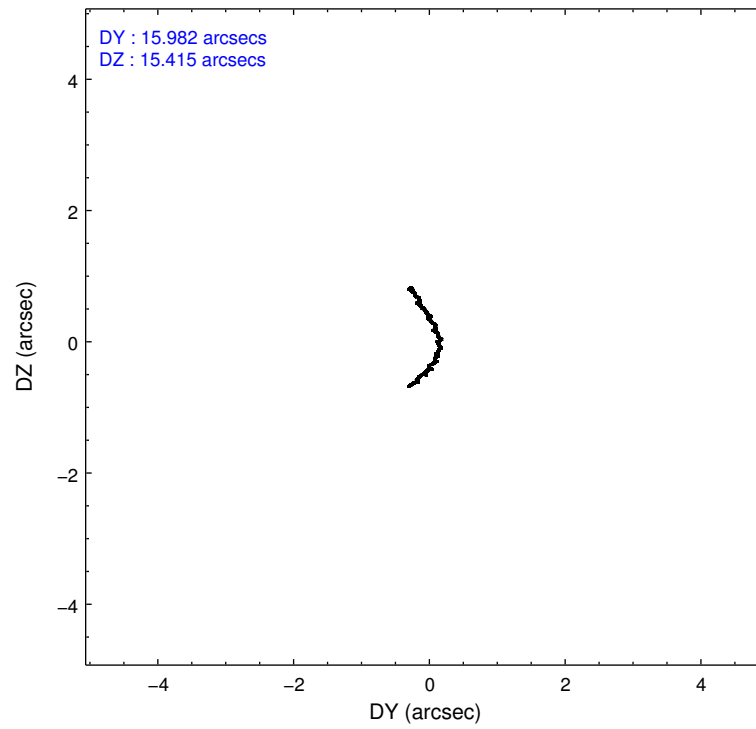
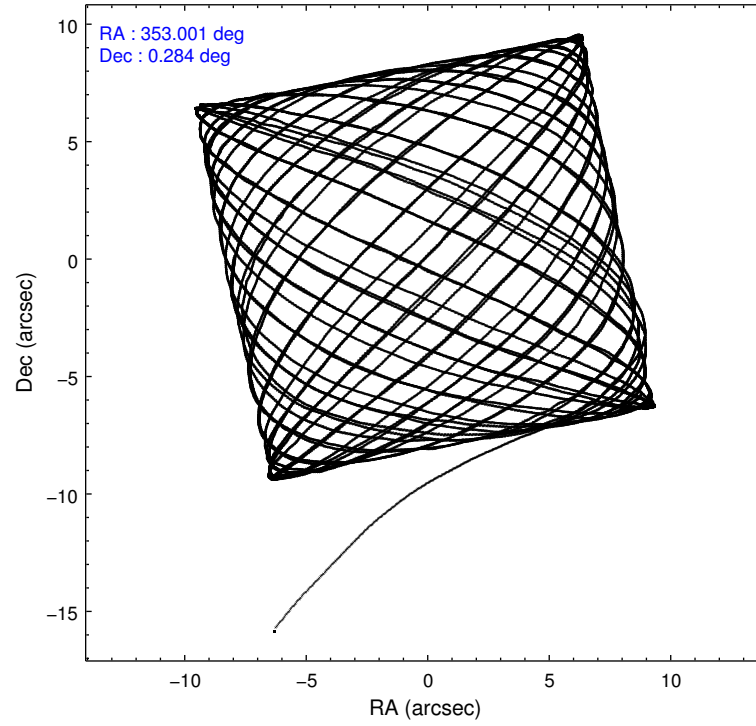
### 2.1.4 Events

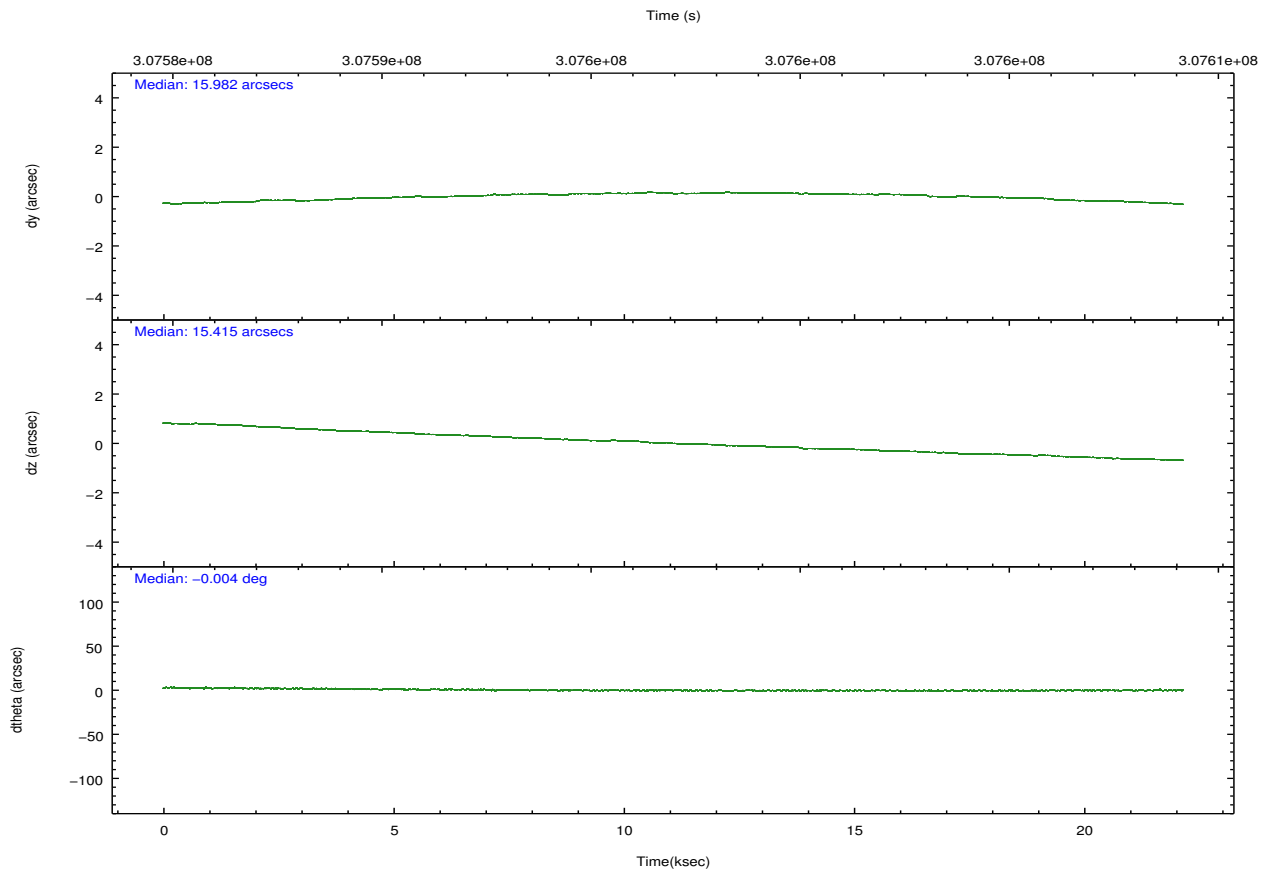
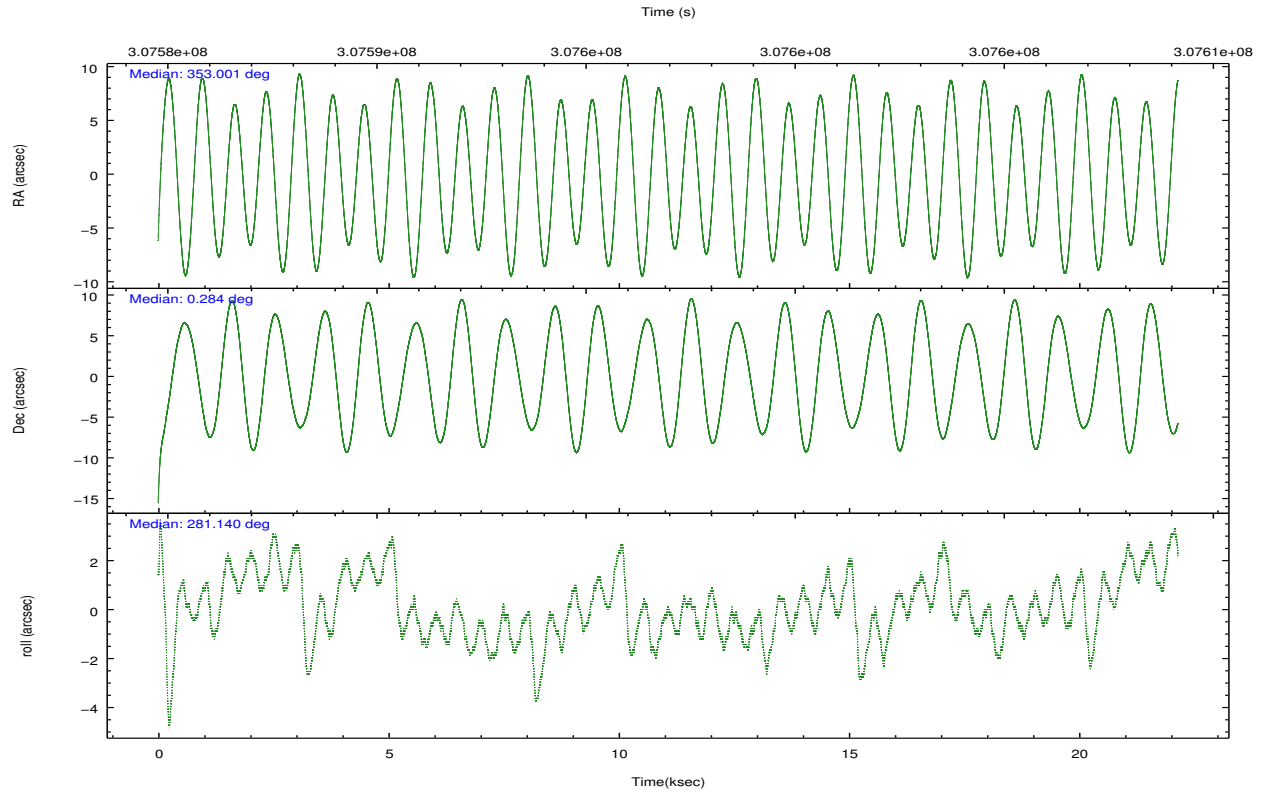
	ccd 2	ccd 3	ccd 5	ccd 6	ccd 7	ccd 8		ccd 2	ccd 3	ccd 5	ccd 6	ccd 7	ccd 8
level 1 events	170080	148954	141697	147173	90403	183689	grade 0 events	5269	4883	15909	5503	7058	13352
rejected events	157226	136974	55593	133652	38663	137259		3%	3%	11%	3%	7%	7%
rejected %	92%	91%	39%	90%	42%	74%	grade 1 events	99	89	413	70	212	141
								0%	0%	0%	0%	0%	0%
							grade 2 events	3221	2529	27023	3160	12409	11357
								1%	1%	19%	2%	13%	6%
							grade 3 events	1314	1397	4198	1459	5392	4948
								0%	0%	2%	0%	5%	2%
							grade 4 events	1362	1348	3990	1391	5239	4553
								0%	0%	2%	0%	5%	2%
							grade 5 events	2386	3057	11139	3034	9413	5359
								1%	2%	7%	2%	10%	2%
							grade 6 events	1893	1984	36303	2229	22363	13113
								1%	1%	25%	1%	24%	7%
							grade 7 events	154536	133667	42722	130327	28317	130866
								90%	89%	30%	88%	31%	71%

## 2.2 Compared Parameters

Parameter	Planned	Actual	Parameter	Planned	Actual
Instrument	ACIS	ACIS	Obspar format version number	7	7
Detector	ACIS-235678	ACIS-235678	Obspar file type	PREDICTED	ACTUAL
Grating	NONE	NONE	Obspar update status	NONE	UPDATED
Data mode	VFAINT	VFAINT	CCD I0 on	N	N
Observation mode	POINTING	POINTING	CCD I1 on	N	N
[deg] Pointing RA	352.982938	353.0012218715741	CCD I2 on	O1	Y
[deg] Pointing Dec	0.304178	0.2838181089818541	CCD I3 on	O2	Y
[deg] Pointing Roll	280.989320	281.1458536008104	CCD S0 on	N	N
[mm] SIM focus pos	-0.684267	-0.6828225247311905	CCD S1 on	Y	Y
[mm] SIM defocus	0	0.001444936568705701	CCD S2 on	Y	Y
[mm] SIM translation stage pos	-190.132523	-190.1400660498719	CCD S3 on	Y	Y
[mm] SIM translation stage offset	0	0.00754346686406393	CCD S4 on	O3	Y
[s] Observation start time (MET)	307586019.184000	307584808.7941	CCD S5 on	N	N
Observation start date	2007-10-01T00:32:34	2007-10-01T00:13:28	Number of optional ACIS chips dropped	0	0
[s] Observation end time (MET)	307608019.184000	307608450.42024	On-chip summing requested	N	N
Observation end date	2007-10-01T06:39:14	2007-10-01T06:47:30	Subarray requested	NONE	NONE
Read mode	TIMED	TIMED	Alternating exposures requested	N	N
			[s] Primary exposure time	0.000000	3.2

## 2.3 Aspect



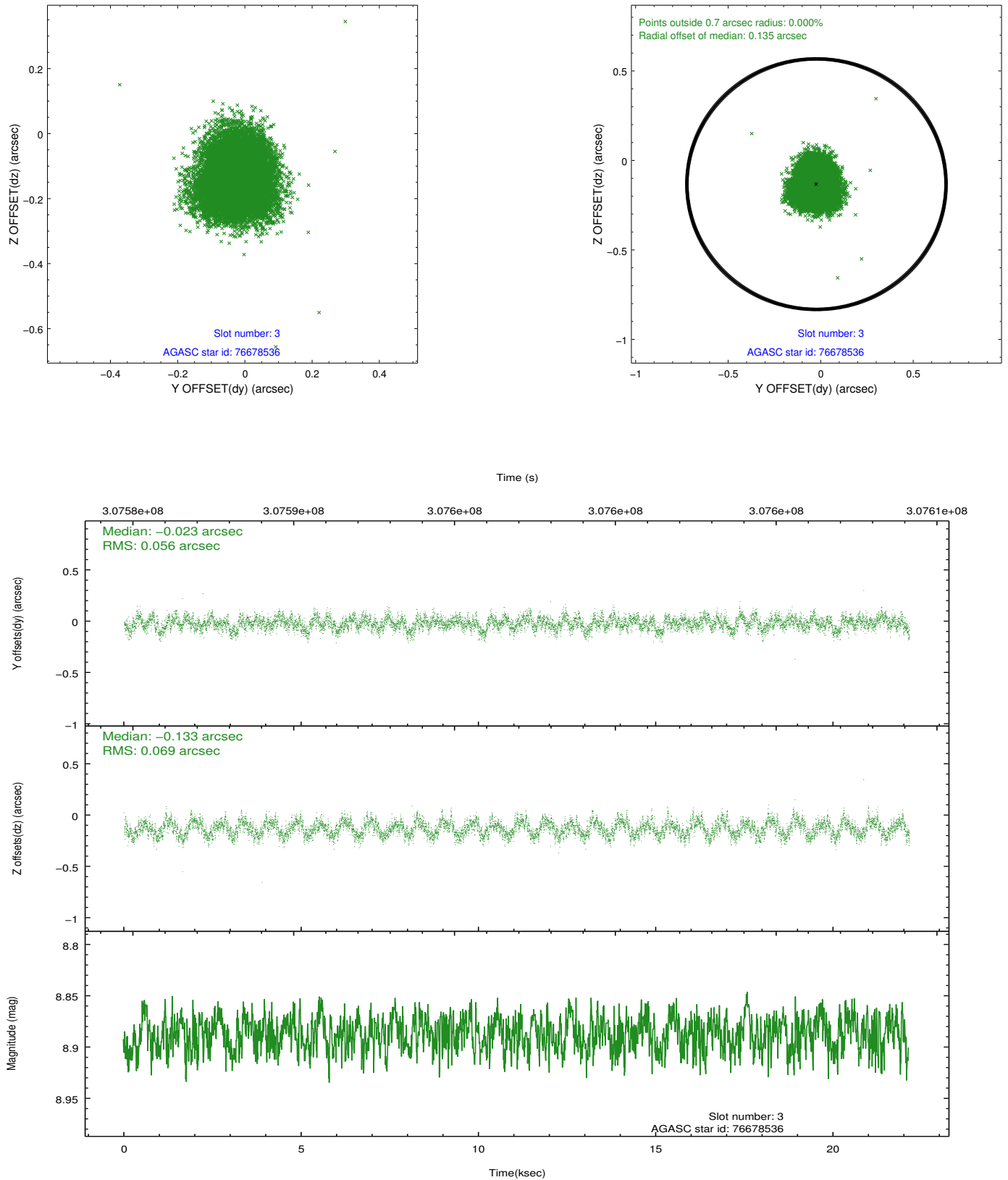


### Slot Statistics

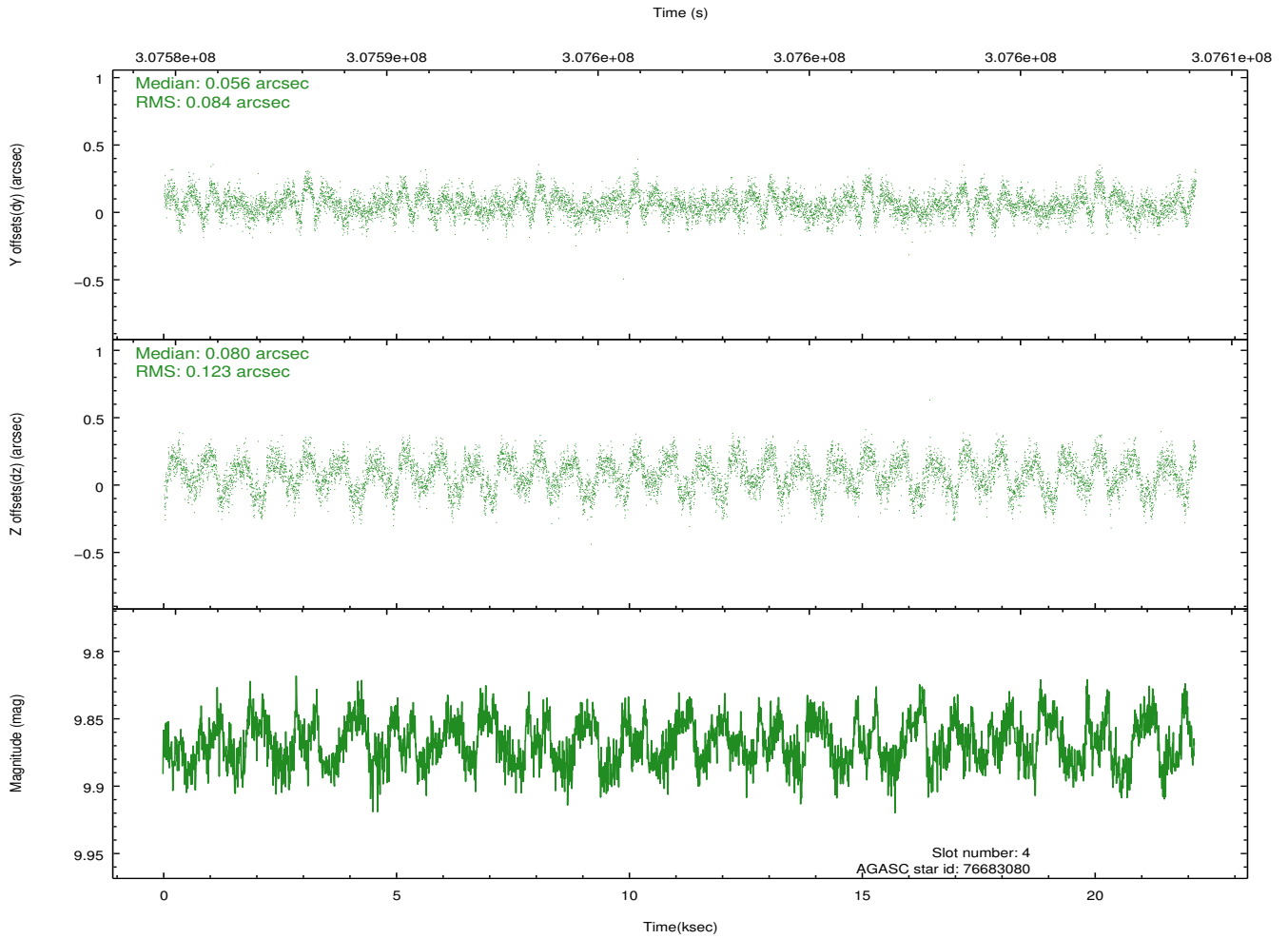
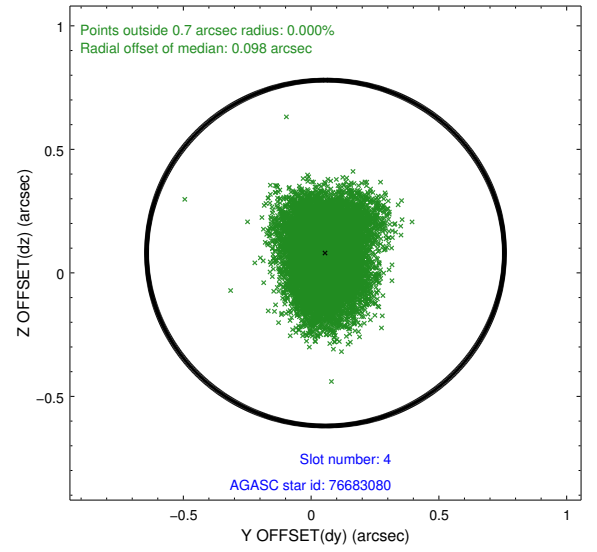
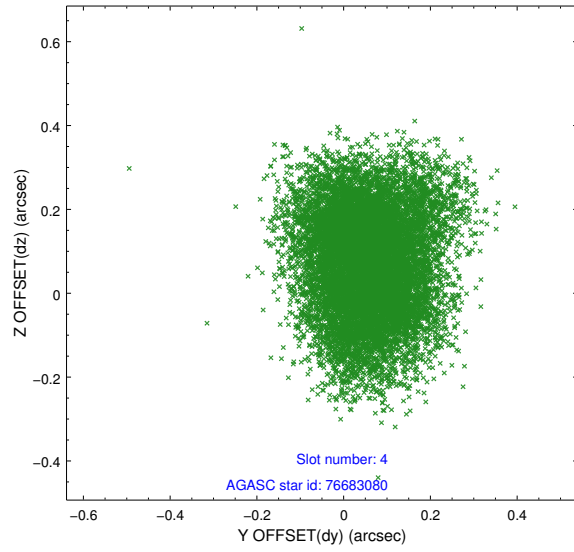
slot	status	id	mag	n_pts	med_dy	med_dz	dr1	dr2	ra	dec	mean_y	mean_z
0	FID	ACIS-S-2	7.09	5402	-0.099	-0.024	0.008	0.014	0.000000	0.000000	-769.05	-1736.86
1	FID	ACIS-S-4	7.19	5401	0.181	0.054	0.008	0.015	0.000000	0.000000	2144.43	171.55
2	FID	ACIS-S-5	7.22	5402	-0.114	-0.021	0.007	0.013	0.000000	0.000000	-1821.72	165.30
3	GUIDE	76678536	8.89	10802	-0.023	-0.133	0.097	0.150	353.237558	0.180446	612.21	815.13
4	GUIDE	76683080	9.87	10783	0.056	0.080	0.161	0.256	353.475595	0.556305	-552.88	1914.19
5	GUIDE	76685264	9.67	10756	-0.064	0.127	0.120	0.186	353.301878	0.237362	454.97	1081.72
6	GUIDE	688259800	9.78	10795	-0.039	-0.020	0.126	0.201	353.657846	-0.137055	2023.10	2082.84
7	GUIDE	688265896	9.17	10796	0.067	-0.045	0.089	0.143	352.587516	-0.177872	1433.02	-1727.76

## 2.4 Star Slots

### 2.4.1 Slot 3

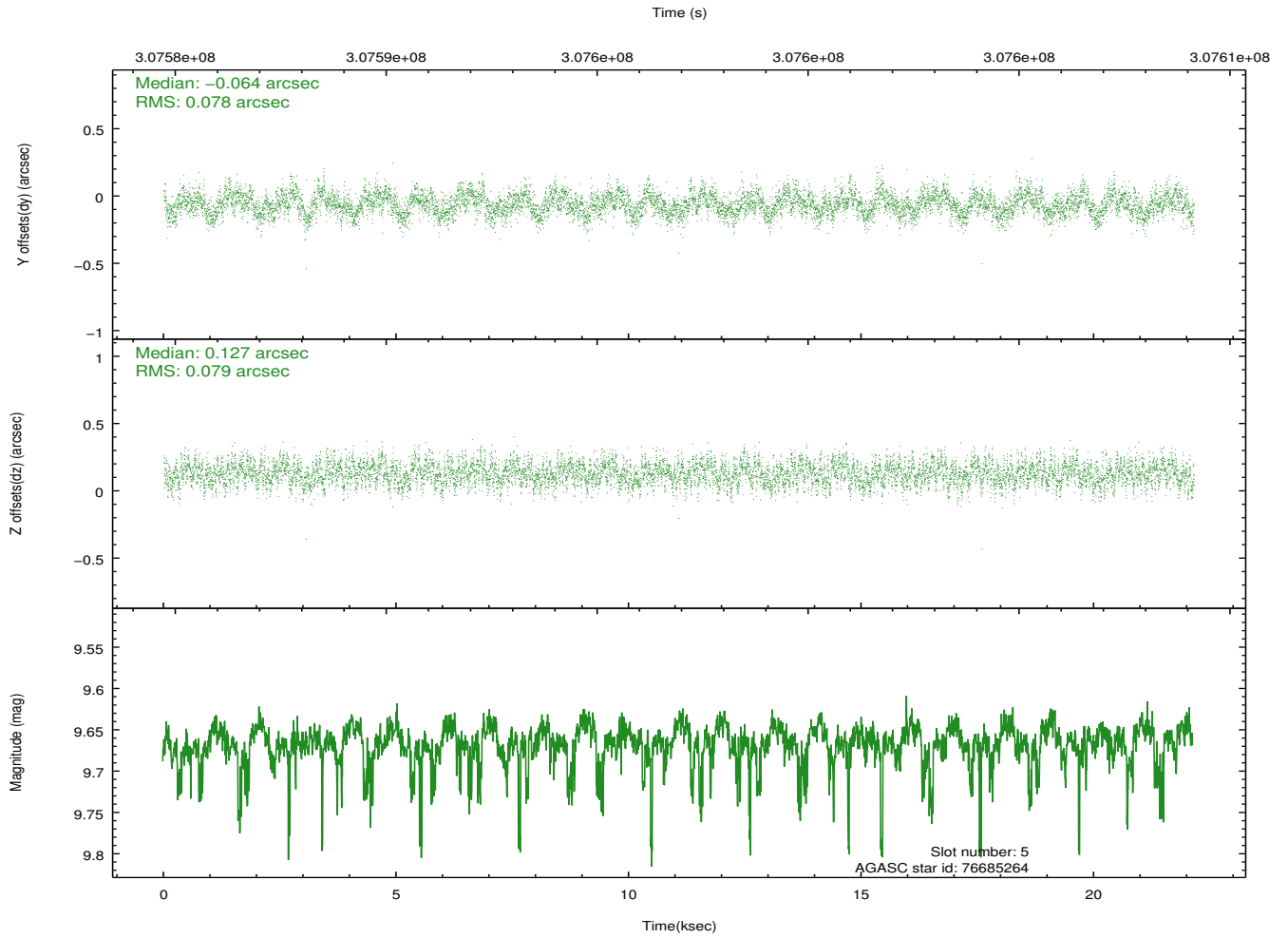
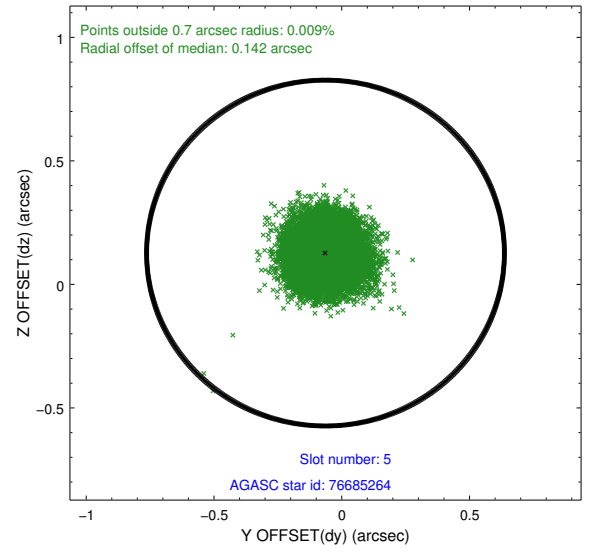
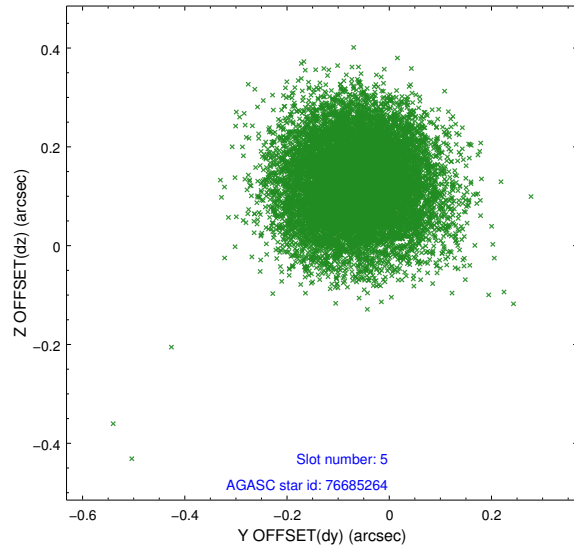


## 2.4.2 Slot 4

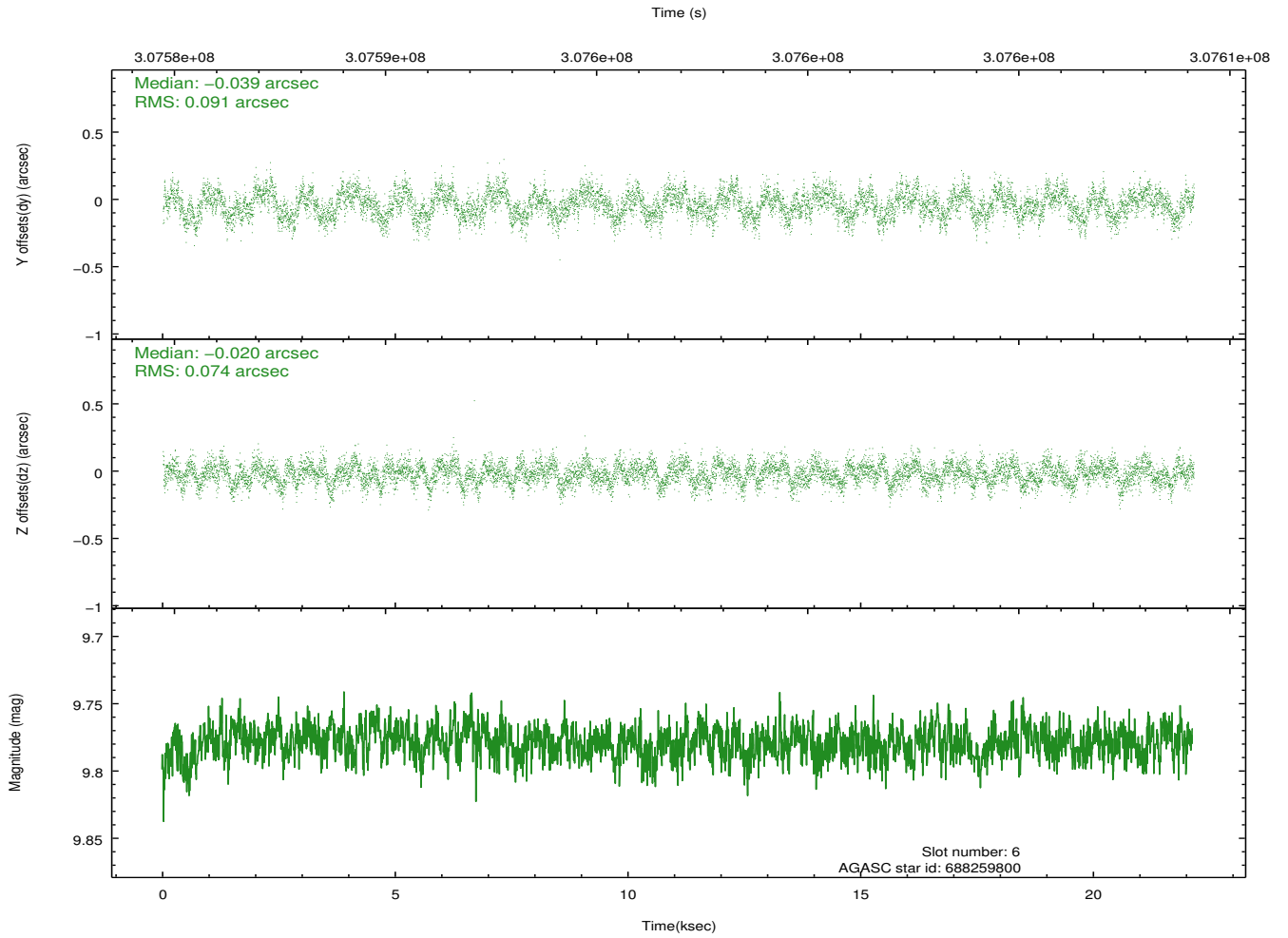
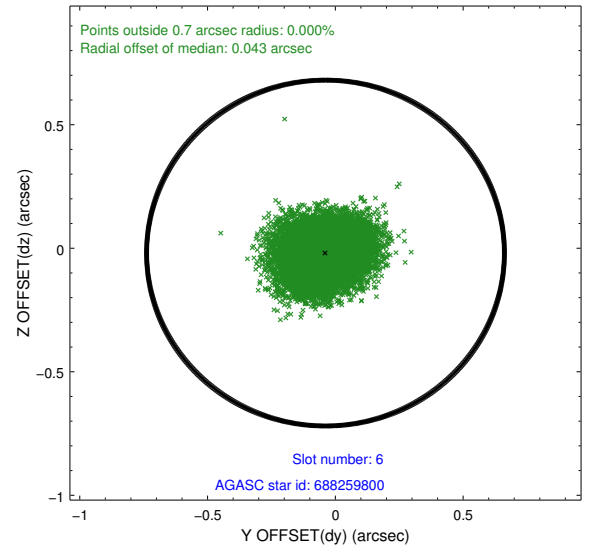
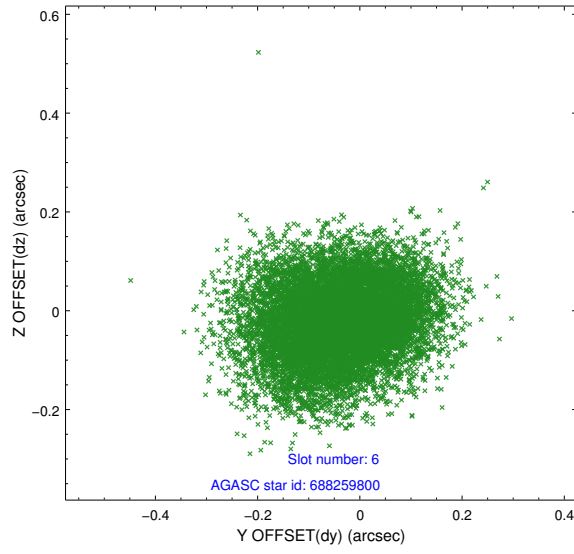




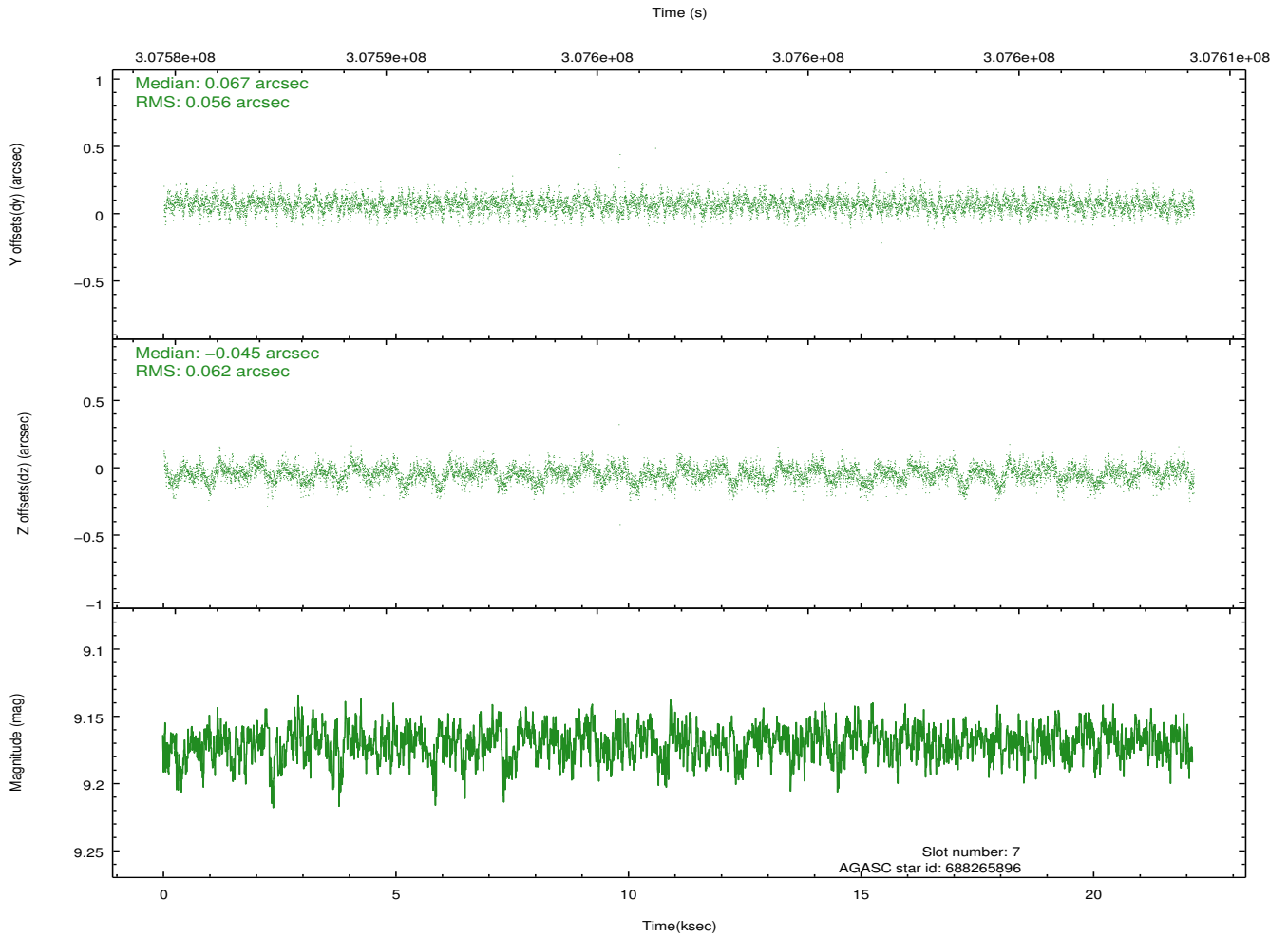
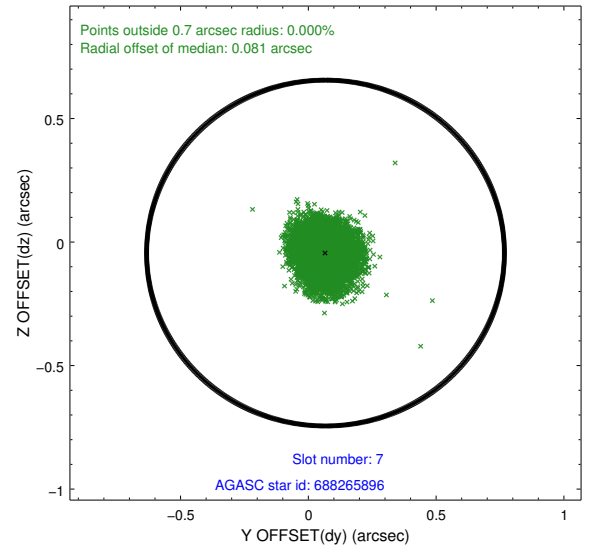
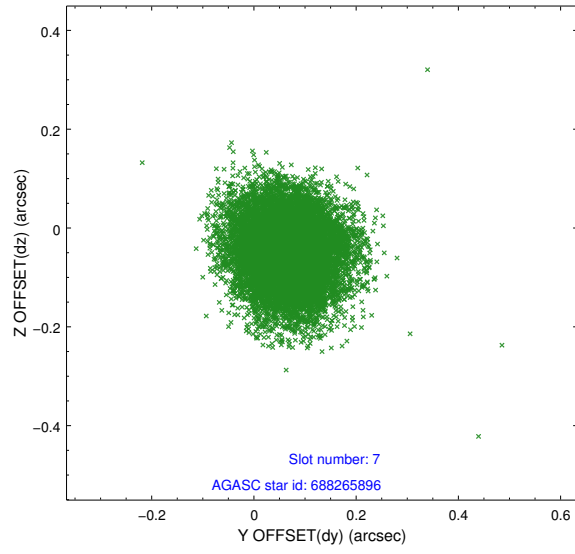
### 2.4.3 Slot 5



## 2.4.4 Slot 6

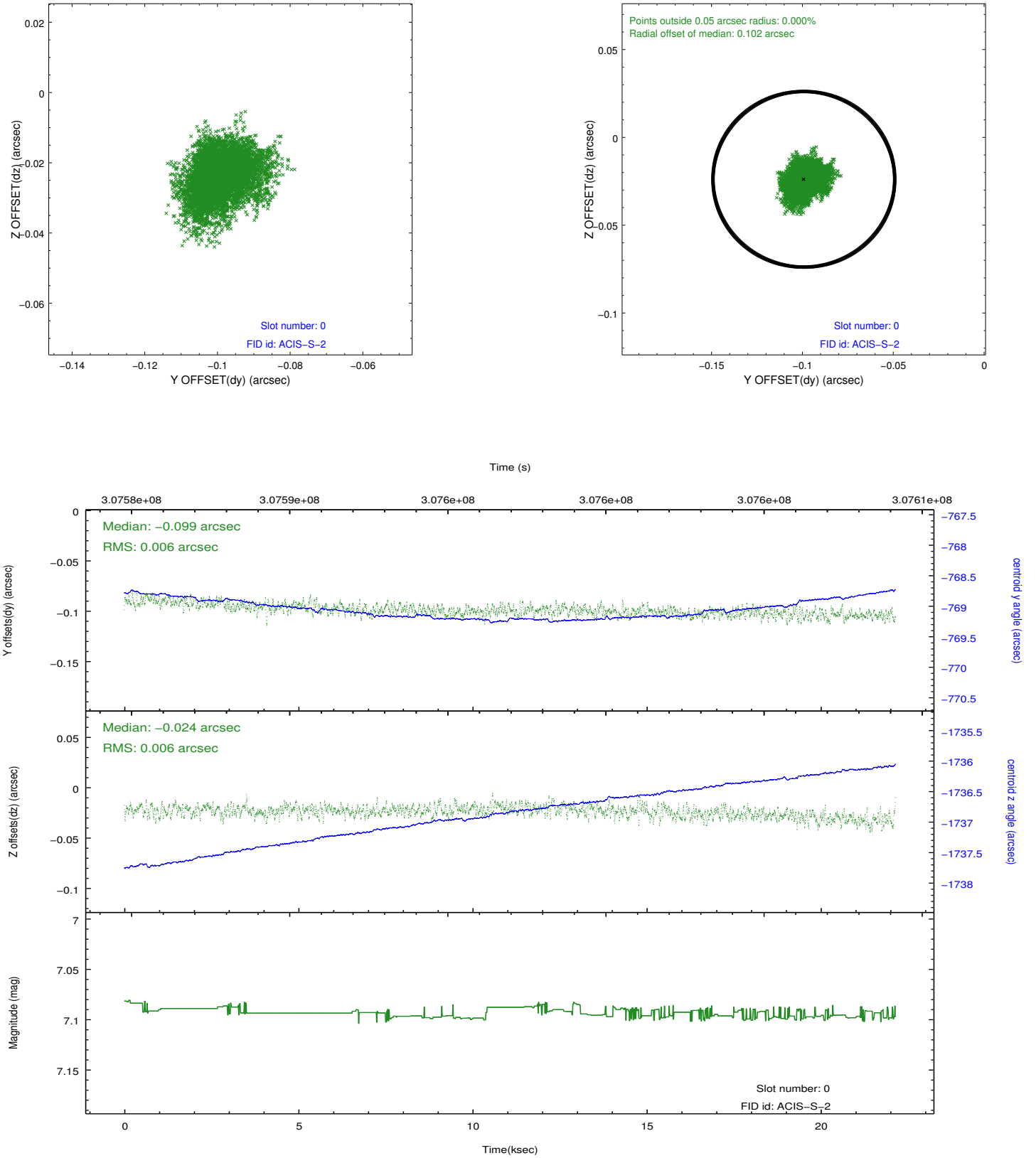


## 2.4.5 Slot 7

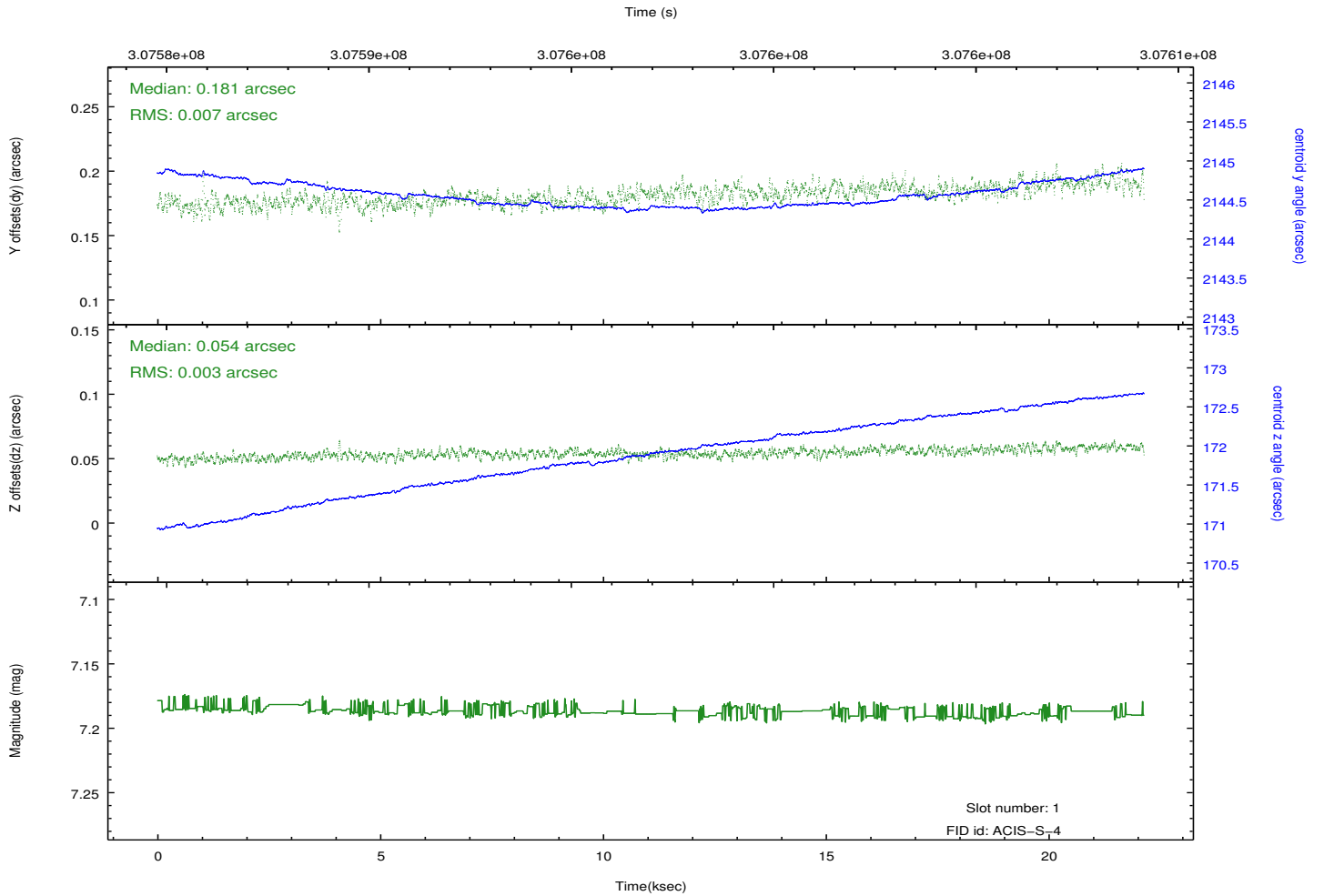
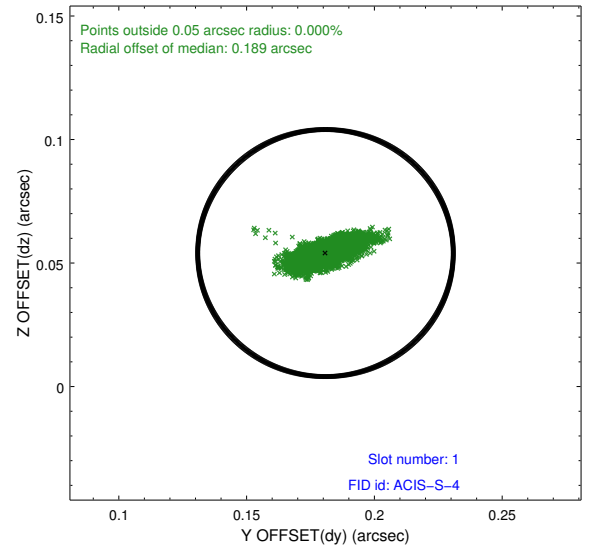
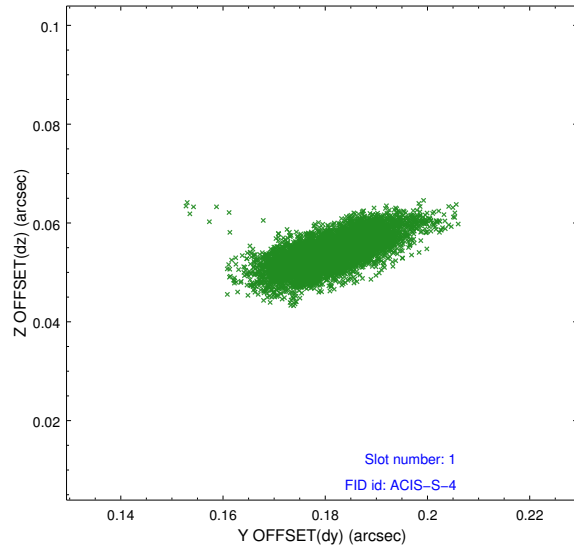


## 2.5 FID Slots

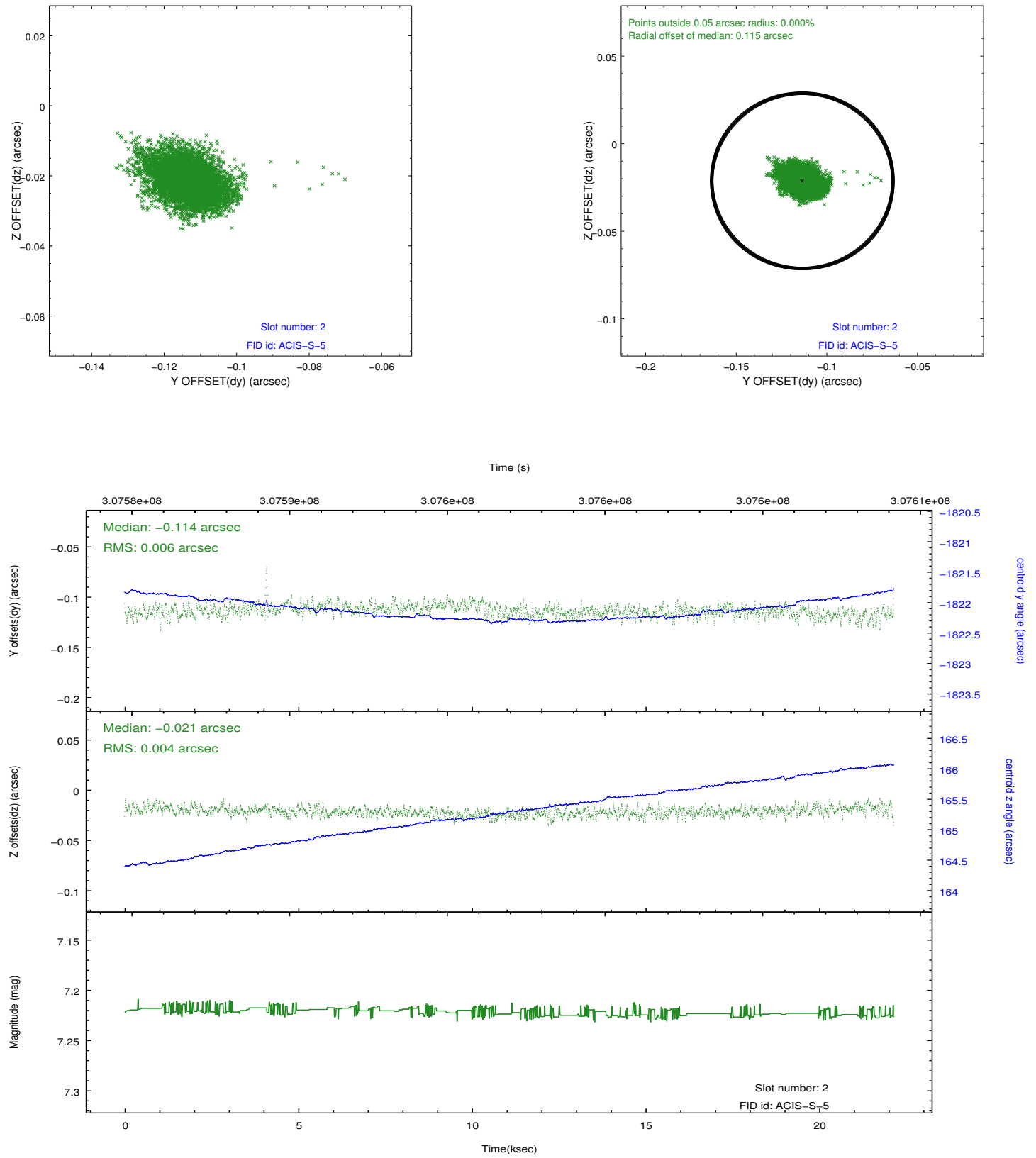
### 2.5.1 Slot 0



## 2.5.2 Slot 1



### 2.5.3 Slot 2



## A Summary

### A.1 Status

V&V Scientist	Jen Lauer
V&V Date (YYYY-MM-DD)	2012.05.04
V&V Edition	1
V&V Disposition and Status	OK
V&V Charge Time	22.1407999

### A.2 Comments