

# V&V Reference Report

## L2 ASCDS Version : 8.5.1.1

Observation 7187 - L2 Version 3  
Chandra X-Ray Center

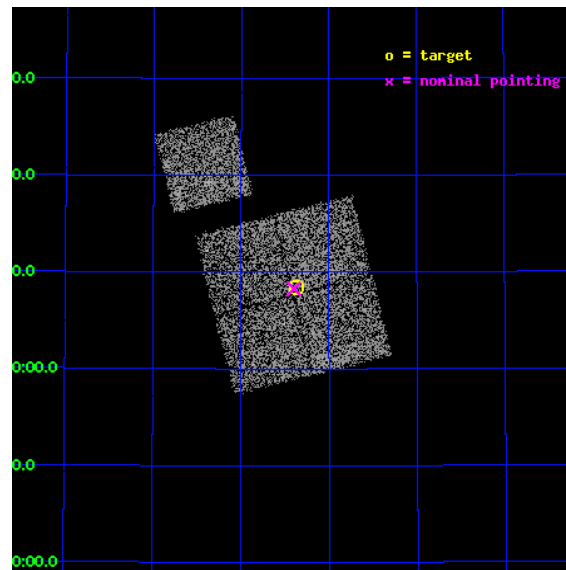
L2 Processing Date : Dec 30 2012

## Contents

<b>1</b>	<b>Front</b>	<b>2</b>
<b>2</b>	<b>OBI</b>	<b>3</b>
2.1	OBI . . . . .	3
2.1.1	Images . . . . .	3
2.1.2	Bias . . . . .	3
2.1.3	Parameters . . . . .	4
2.1.4	Events . . . . .	4
2.2	Compared Parameters . . . . .	5
2.3	Aspect . . . . .	6
2.4	Star Slots . . . . .	9
2.4.1	Slot 3 . . . . .	9
2.4.2	Slot 4 . . . . .	10
2.4.3	Slot 5 . . . . .	11
2.4.4	Slot 6 . . . . .	12
2.4.5	Slot 7 . . . . .	13
2.5	FID Slots . . . . .	14
2.5.1	Slot 0 . . . . .	14
2.5.2	Slot 1 . . . . .	15
2.5.3	Slot 2 . . . . .	16
<b>A</b>	<b>Summary</b>	<b>17</b>
A.1	Status . . . . .	17
A.2	Comments . . . . .	17

# 1 Front

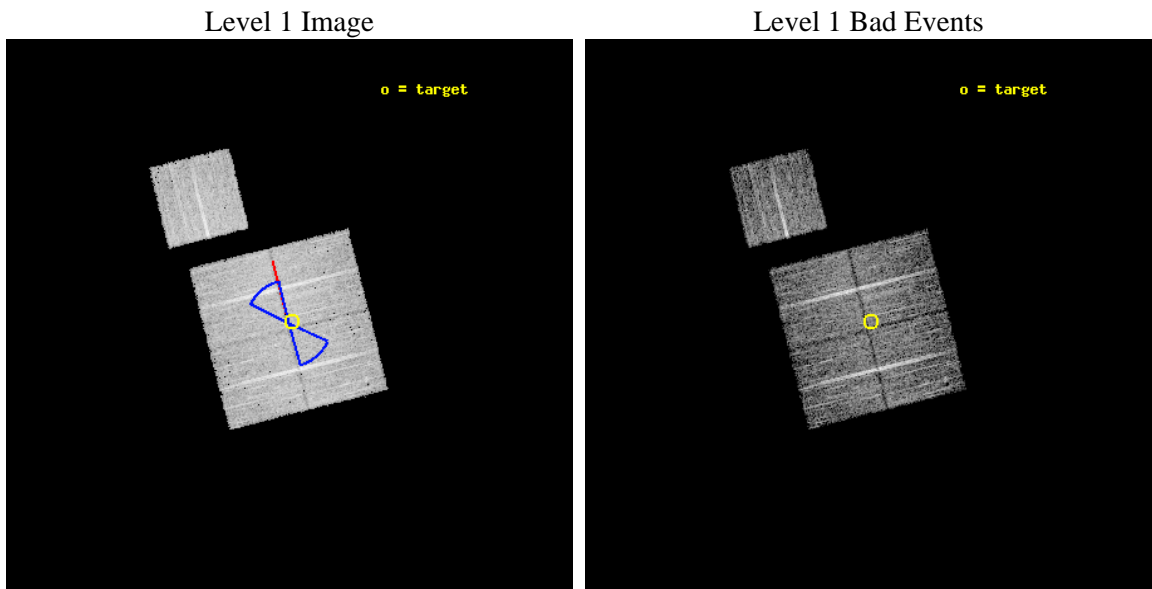
seq_num	900354	Sequence number
obs_id	7187	Observation id
title	Deep Chandra Imaging of the Extended Groth Strip: The Co-evolution of Black Holes and Galaxies	Proposal title
observer	Prof Kirpal Nandra	Principal investigator
object	EGS-7	Source name
dtcycle	0	&#160
cycle	P	events from which exps? Prim/Second/Both
ra_targ	213.843735	Observer's specified target RA [deg]
dec_targ	52.140667	Observer's specified target Dec [deg]
ra_nom	213.84966530512	Nominal RA [deg]
dec_nom	52.137843409332	Nominal Dec [deg]
roll_nom	345.96001434131	Nominal Roll [deg]
revision	3	Processing version of data
ontime	6677.3999871314	Sum of GTIs [s]
livetime	6590.1548404691	Livetime [s]
ontime0	6674.2589968443	Sum of GTIs [s]
ontime1	6677.3999871314	Sum of GTIs [s]
ontime2	6677.3999871314	Sum of GTIs [s]
ontime3	6677.3999871314	Sum of GTIs [s]
ontime6	6677.3999871314	Sum of GTIs [s]
l2events	18184	Number of level 2 events



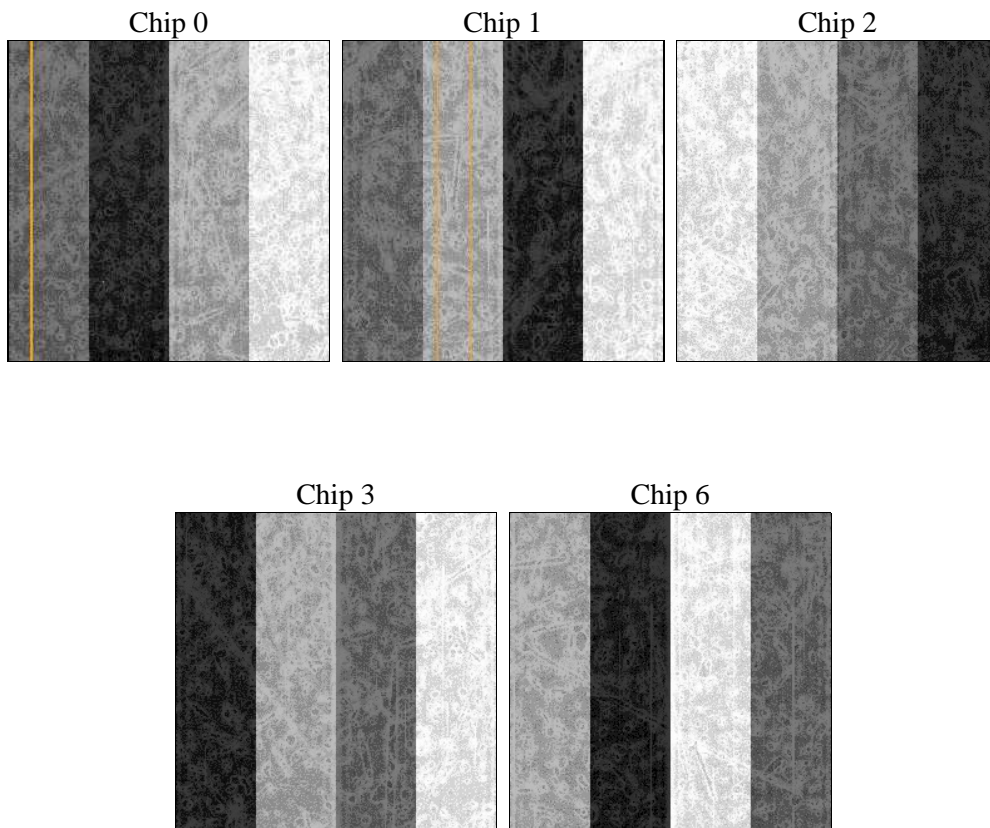
## 2 OBI

### 2.1 OBI

#### 2.1.1 Images



#### 2.1.2 Bias



### 2.1.3 Parameters

obi_num	0	Obi number	sched_exp_time	6500.000000	[s] Scheduled observation exposure time
ascdsver	8.5.1.1	Processing system revision	ontime	6677.3999871314	Sum of GTIs [s]
caldsver	4.5.5	&#160	ontime0	6674.2589968443	Sum of GTIs [s]
date	2012-12-30T19:48:32	Date and time of file creation	ontime1	6677.3999871314	Sum of GTIs [s]
revision	3	Processing version of data	ontime2	6677.3999871314	Sum of GTIs [s]
			ontime3	6677.3999871314	Sum of GTIs [s]
			ontime6	6677.3999871314	Sum of GTIs [s]
			l1events	215339	Number of level 1 events

### 2.1.4 Events

	ccd 0	ccd 1	ccd 2	ccd 3	ccd 6
level 1 events	41245	42151	46050	42366	43527
rejected events	36870	37292	41748	38386	39092
rejected %	89%	88%	90%	90%	89%

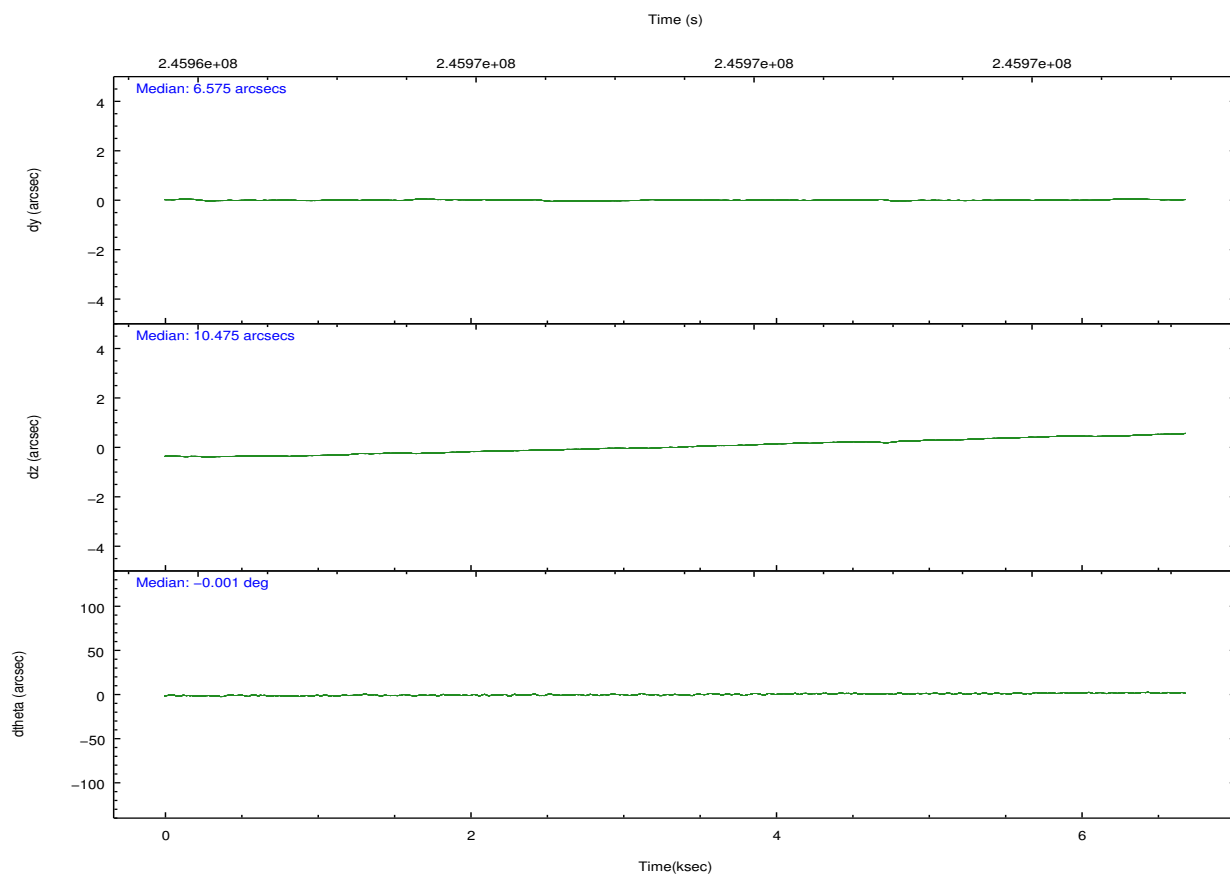
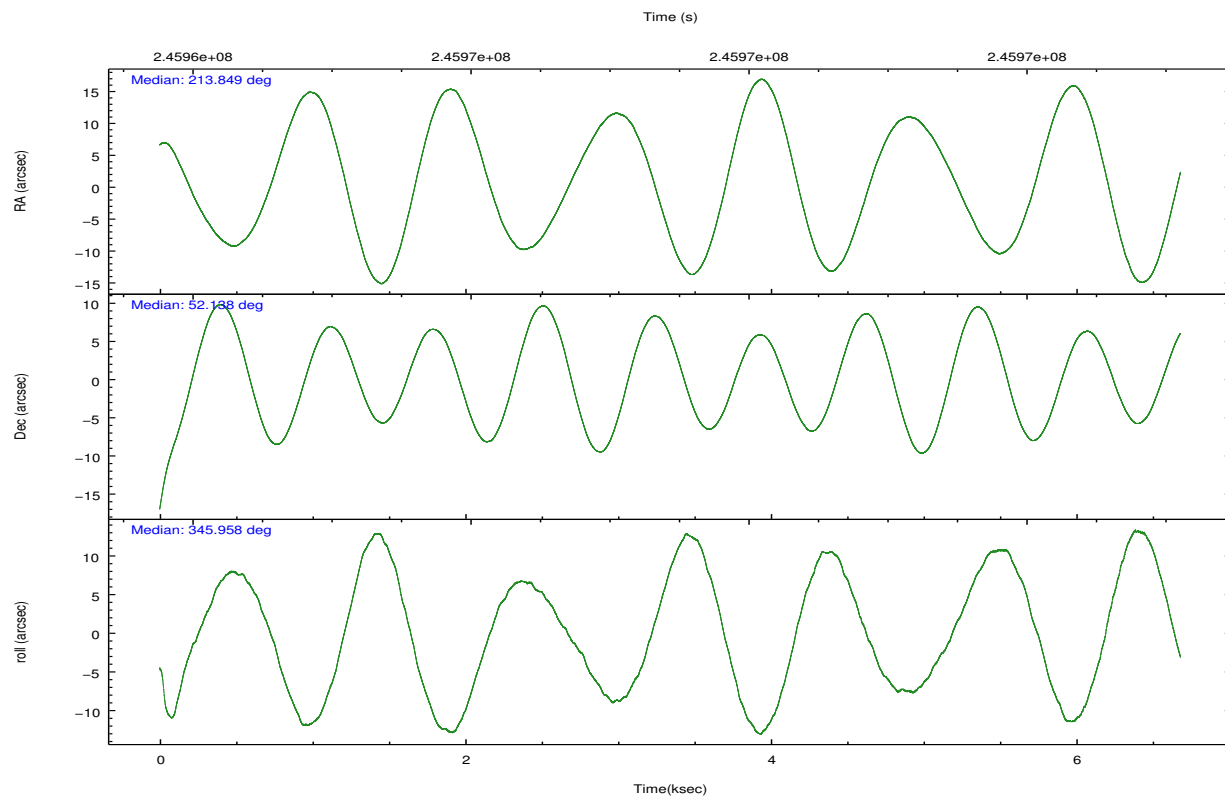
	ccd 0	ccd 1	ccd 2	ccd 3	ccd 6
grade 0 events	1562	1812	1541	1417	1580
	3%	4%	3%	3%	3%
grade 1 events	23	28	27	17	19
	0%	0%	0%	0%	0%
grade 2 events	1027	1112	1041	931	957
	2%	2%	2%	2%	2%
grade 3 events	530	554	483	446	542
	1%	1%	1%	1%	1%
grade 4 events	479	522	461	469	487
	1%	1%	1%	1%	1%
grade 5 events	1528	1653	1443	1721	1742
	3%	3%	3%	4%	4%
grade 6 events	842	933	851	776	965
	2%	2%	1%	1%	2%
grade 7 events	35254	35537	40203	36589	37235
	85%	84%	87%	86%	85%



## 2.2 Compared Parameters

Parameter	Planned	Actual	Parameter	Planned	Actual
Instrument	ACIS	ACIS	Obspar format version number	7	7
Detector	ACIS-01236	ACIS-01236	Obspar file type	PREDICTED	ACTUAL
Grating	NONE	NONE	Obspar update status	NONE	UPDATED
Data mode	VFAINT	VFAINT	Number of optional ACIS chips dropped	0	0
Observation mode	POINTING	POINTING	On-chip summing requested	N	N
[deg] Pointing RA	213.806935	213.8496653051243	Subarray requested	NONE	NONE
[deg] Pointing Dec	52.130227	52.13784340933155	Alternating exposures requested	N	N
[deg] Pointing Roll	345.785047	345.9600143413148	[s] Primary exposure time	0.000000	3.1
[deg] Roll angle	50.756000	50.756000			
[deg] Roll tolerance	25.000000	25.000000			
Roll constraint allows 180D rotation	Y	Y			
[mm] SIM focus pos	-0.782348	-0.7809083437167272			
[mm] SIM defocus	0	0.001439871863259334			
[mm] SIM translation stage pos	-233.592463	-233.5874344608287			
[mm] SIM translation stage offset	0	-0.005018542100998502			
[s] Observation start time (MET)	245964273.184000	245963228.5908			
Observation start date	2005-10-17T19:23:29	2005-10-17T19:07:08			
[s] Observation end time (MET)	245970773.184000	245971576.19118			
Observation end date	2005-10-17T21:11:49	2005-10-17T21:26:16			
Read mode	TIMED	TIMED			

## 2.3 Aspect

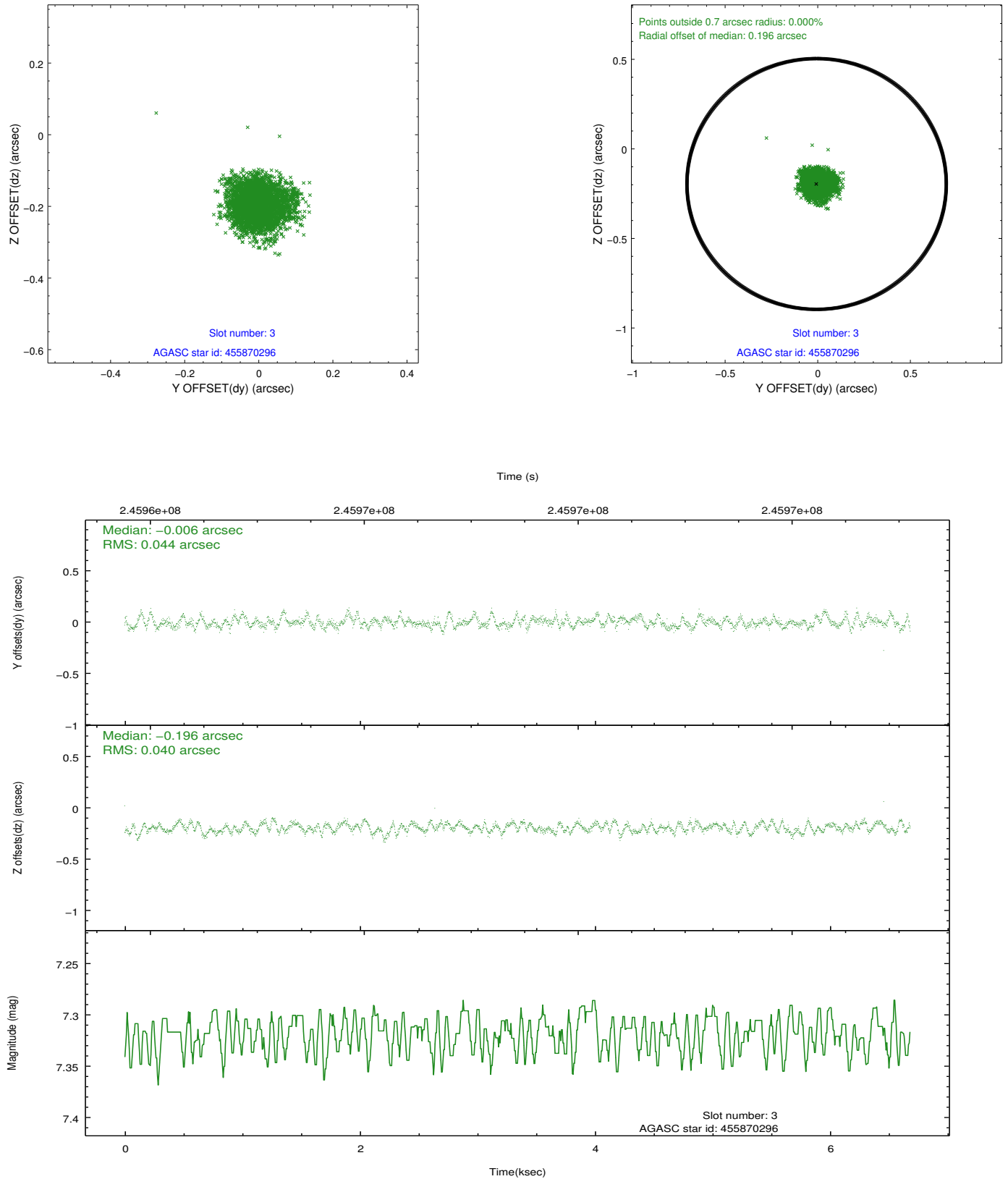


### Slot Statistics

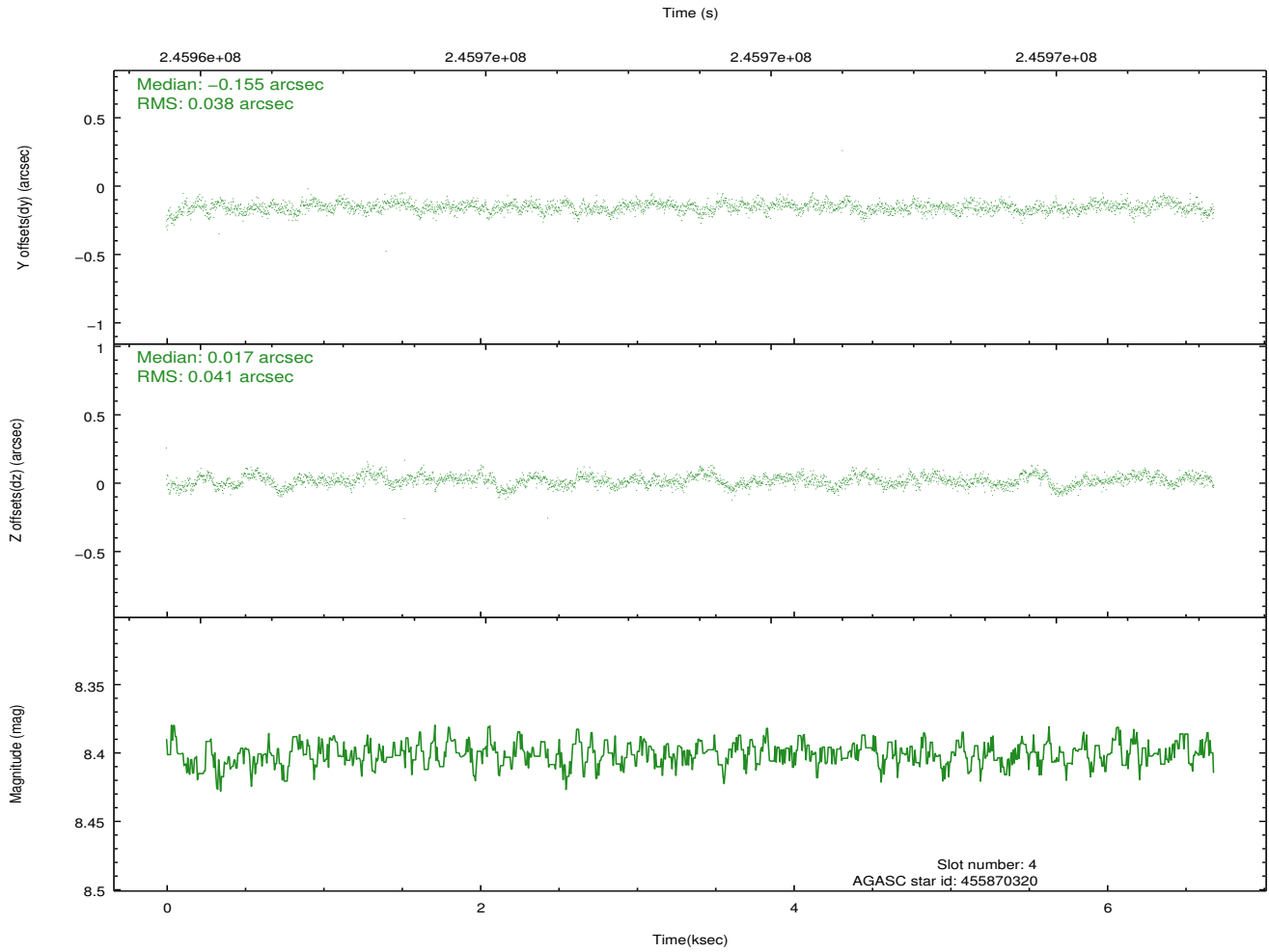
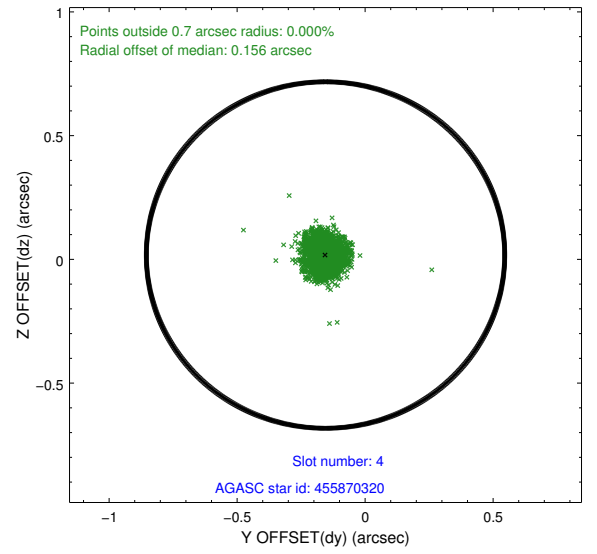
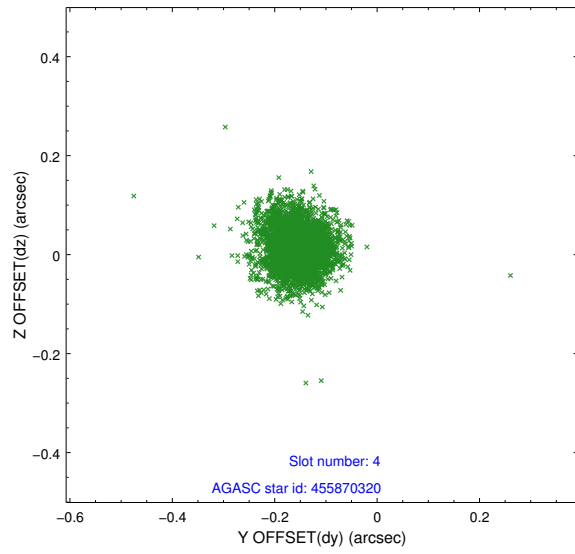
slot	status	id	mag	n_pts	med_dy	med_dz	dr1	dr2	ra	dec	mean_y	mean_z
0	FID	ACIS-I-1	7.25	1630	0.029	-0.022	0.017	0.025	0.000000	0.000000	933.14	-834.03
1	FID	ACIS-I-5	7.23	1629	-0.168	0.042	0.010	0.016	0.000000	0.000000	-1814.66	1063.12
2	FID	ACIS-I-6	7.26	1630	0.047	0.049	0.011	0.017	0.000000	0.000000	397.78	1708.59
3	GUIDE	455870296	7.32	3261	-0.006	-0.196	0.064	0.103	214.629779	52.033323	1850.06	119.39
4	GUIDE	455870320	8.40	3260	-0.155	0.017	0.058	0.096	214.874440	52.401638	2029.54	1539.95
5	GUIDE	455871720	9.90	3258	0.141	0.240	0.133	0.227	214.017360	52.072997	502.89	-83.74
6	GUIDE	504894728	8.82	3261	0.095	0.008	0.076	0.126	213.220892	52.722550	-1763.06	1758.46
7	GUIDE	505806936	7.00	3259	-0.078	-0.081	0.068	0.107	213.820815	52.535927	-329.46	1423.92

## 2.4 Star Slots

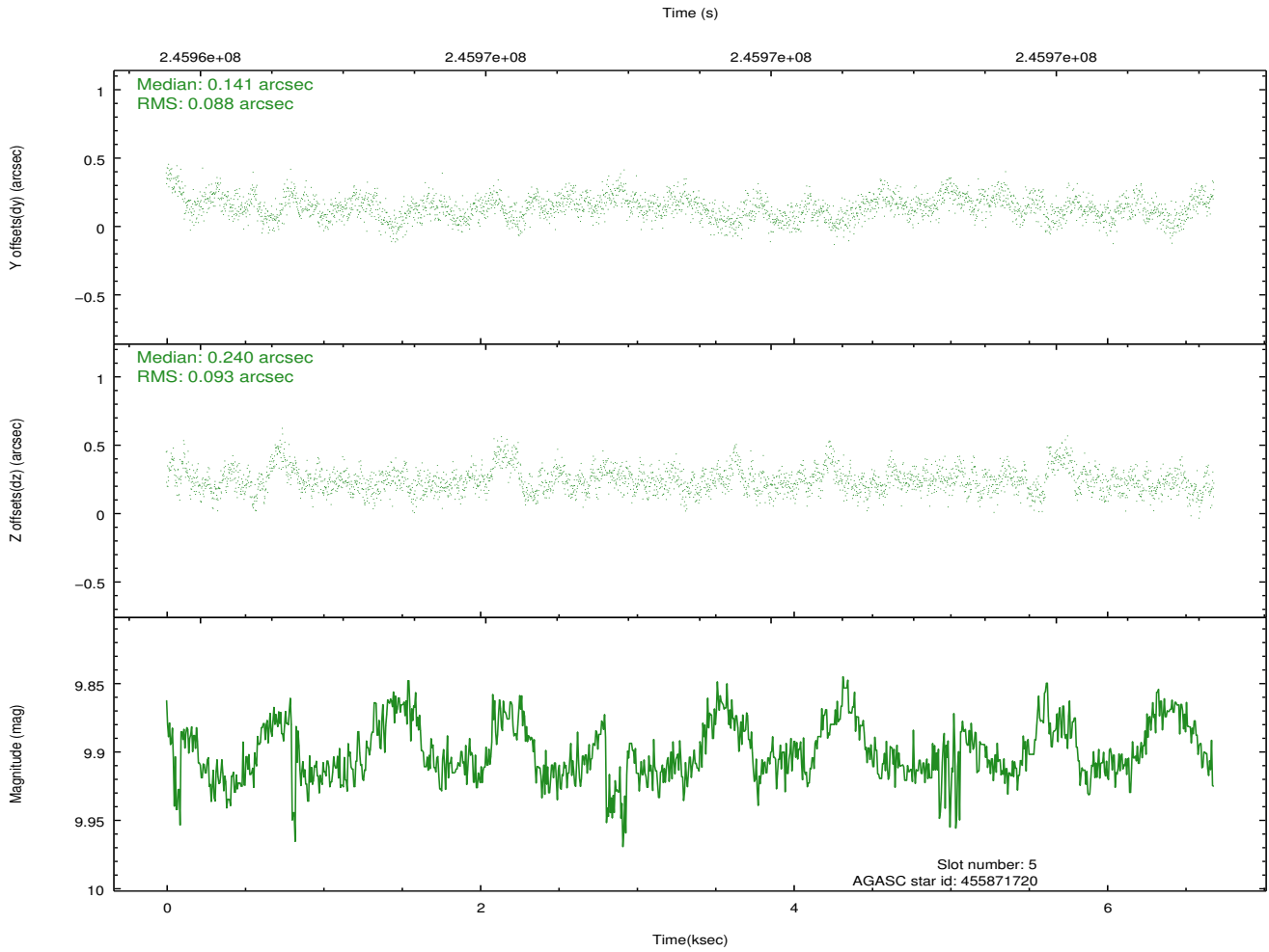
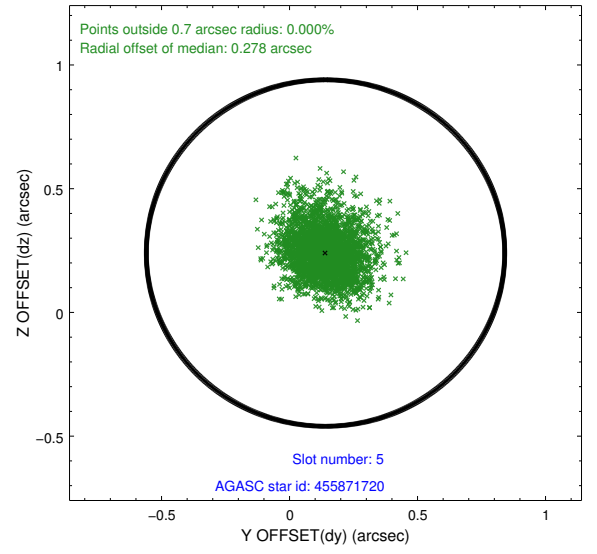
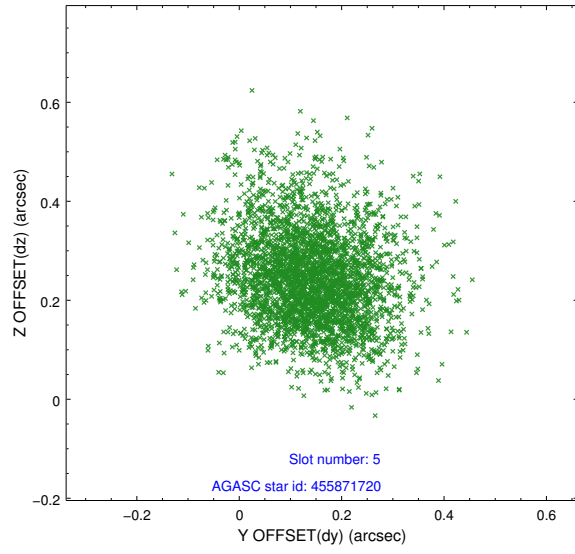
### 2.4.1 Slot 3



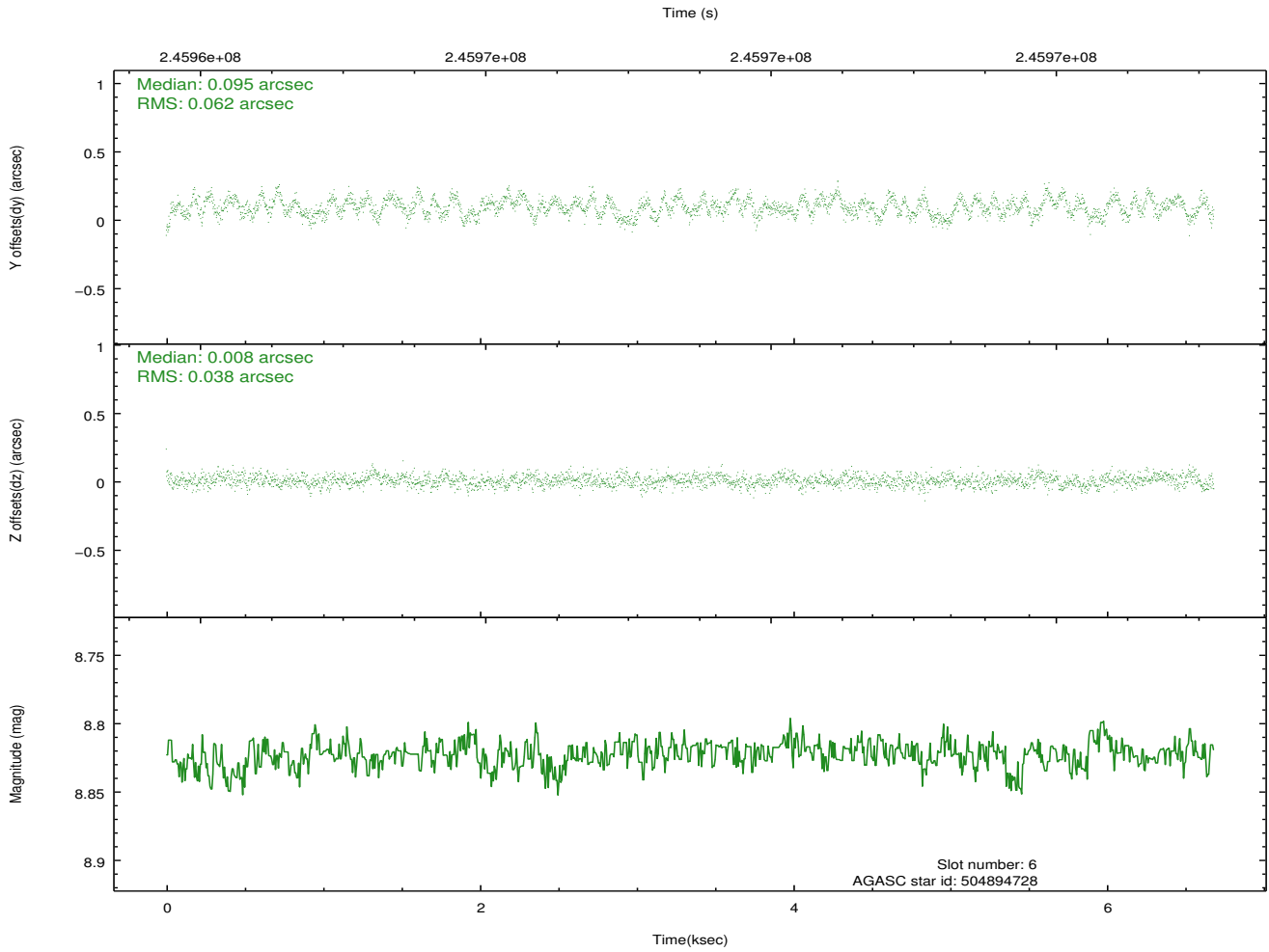
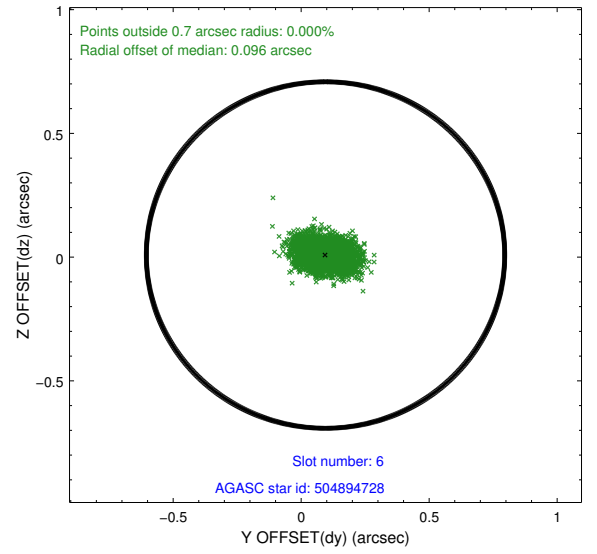
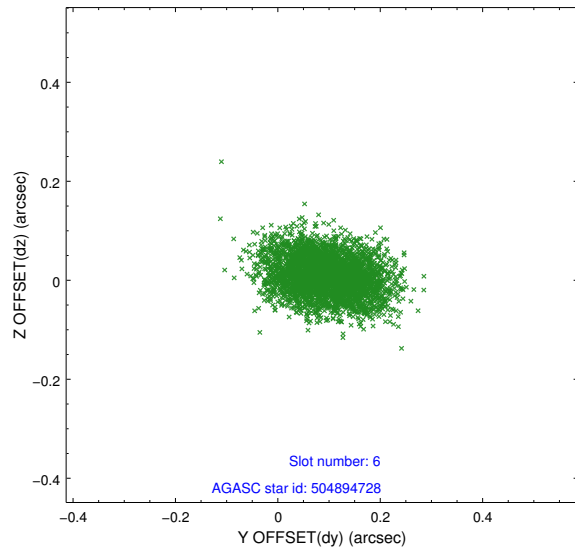
## 2.4.2 Slot 4



### 2.4.3 Slot 5

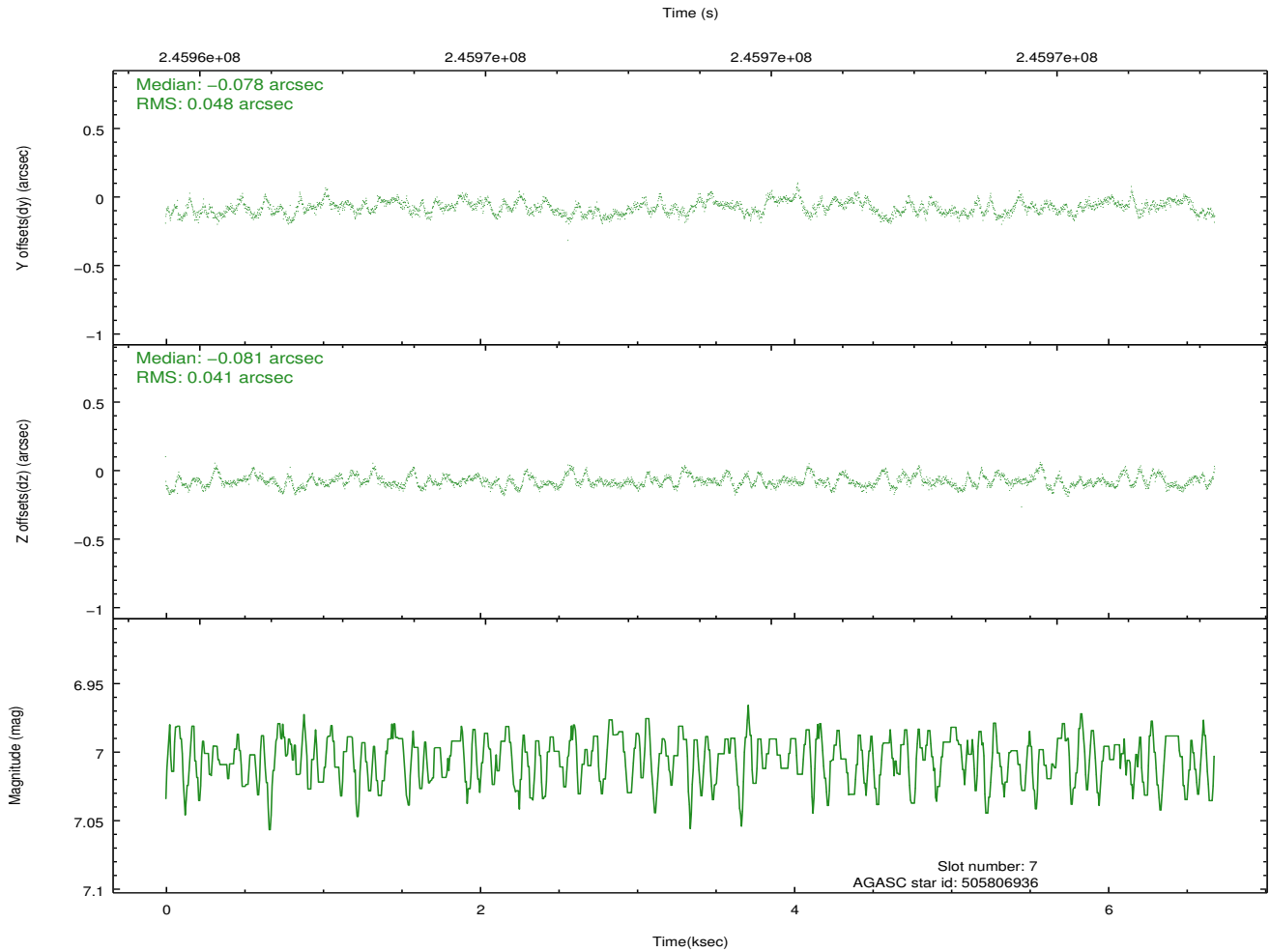
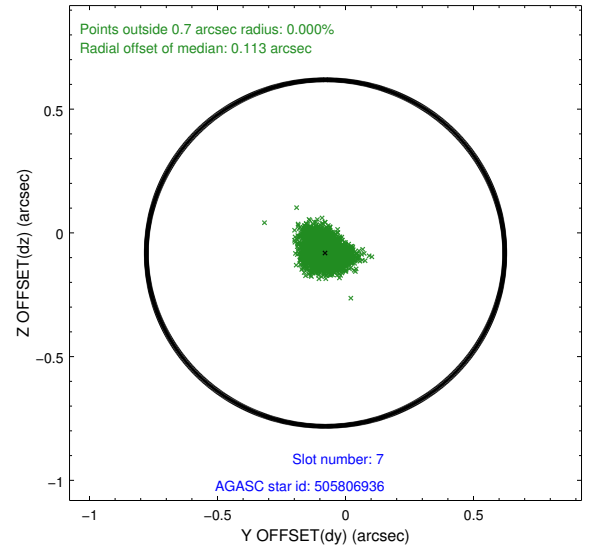
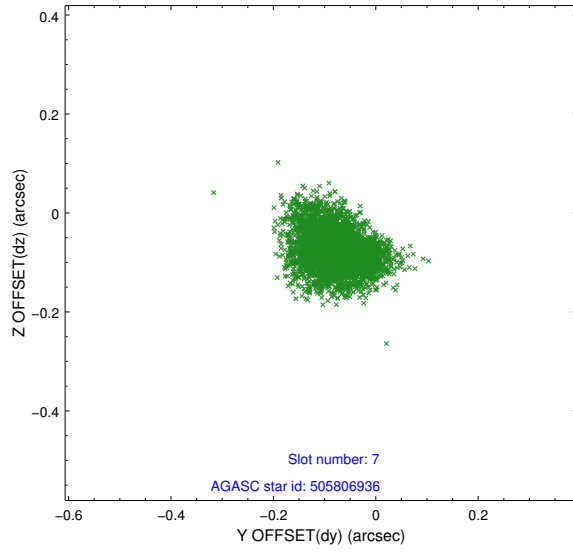


## 2.4.4 Slot 6



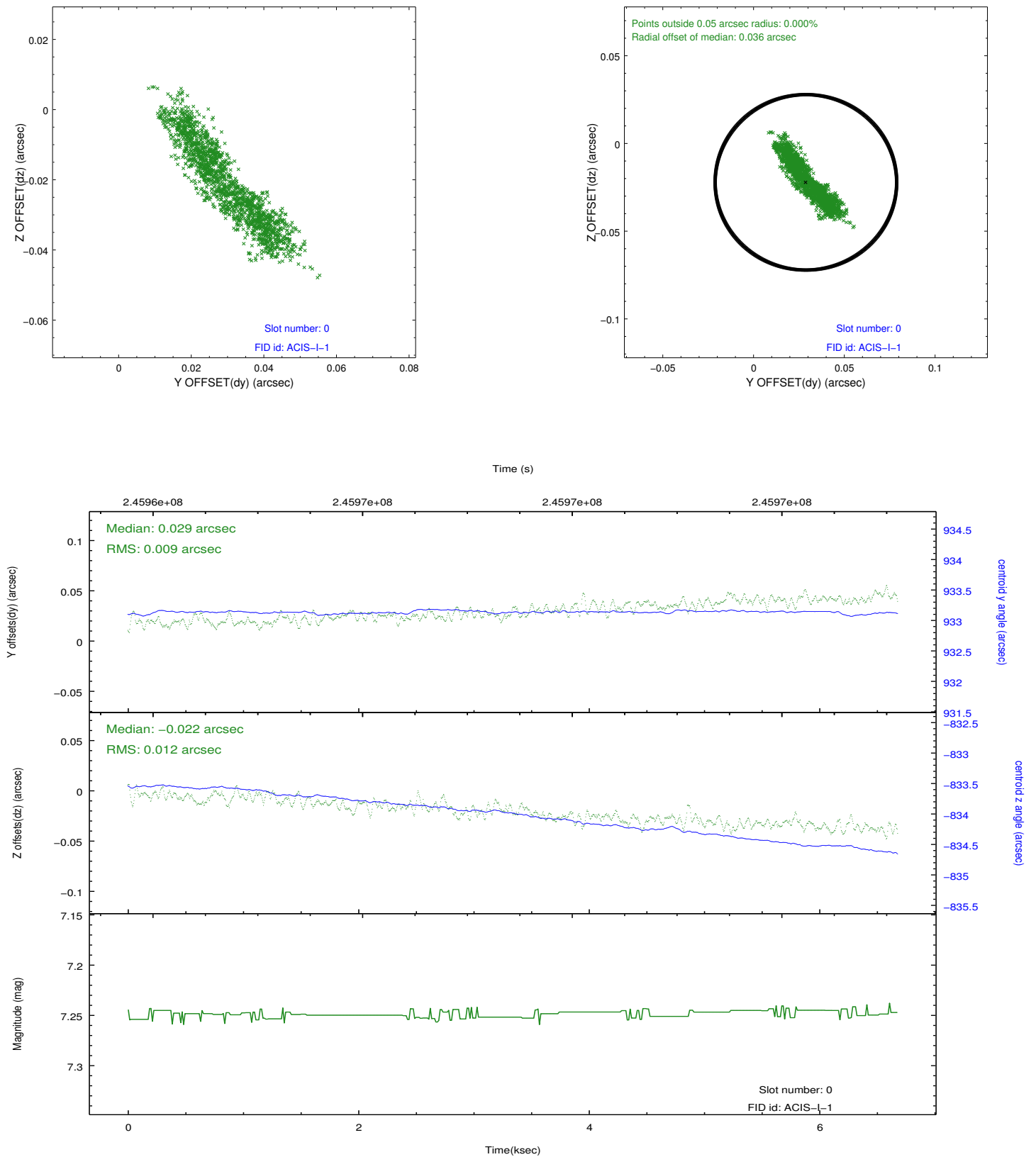


## 2.4.5 Slot 7

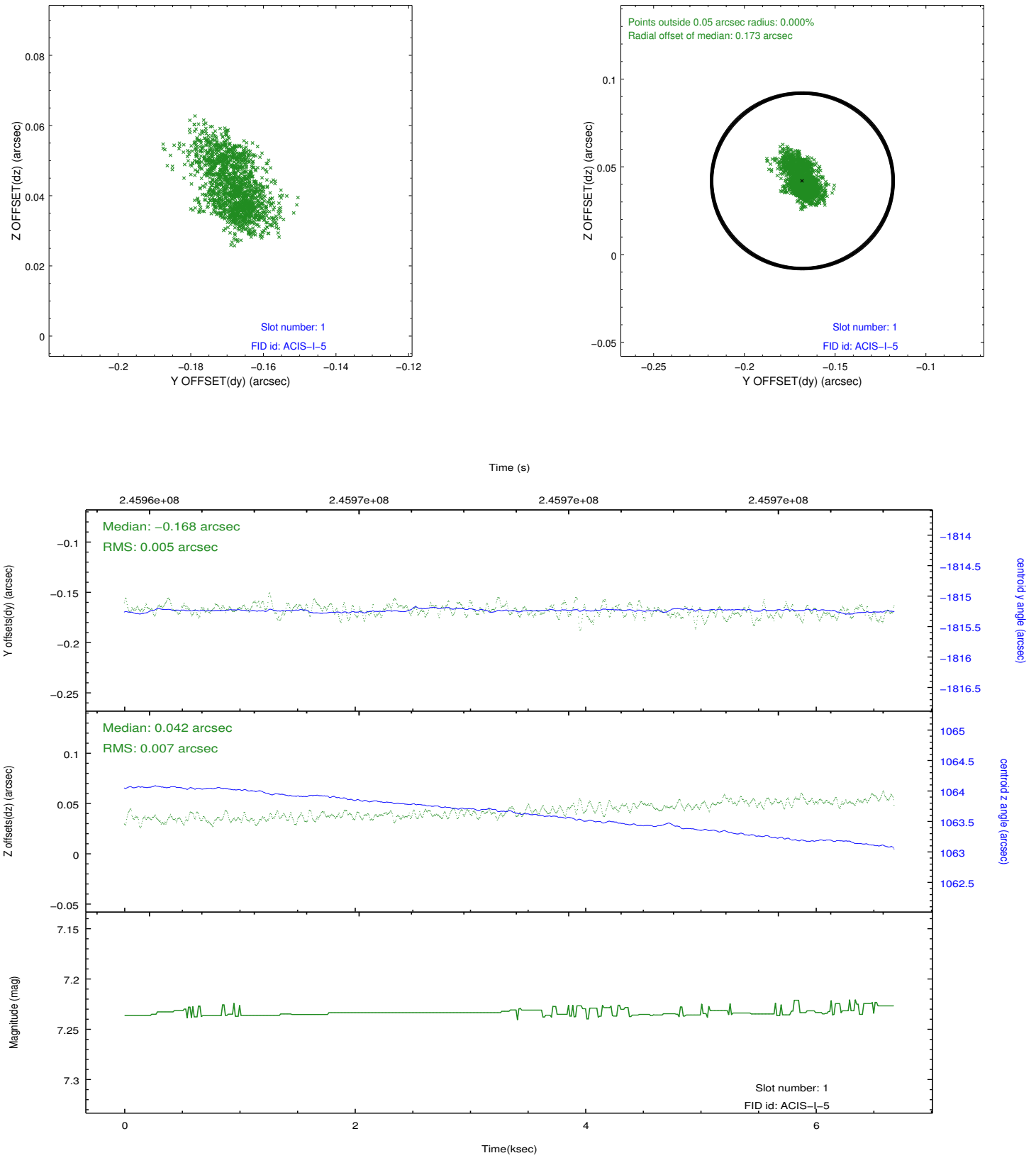


## 2.5 FID Slots

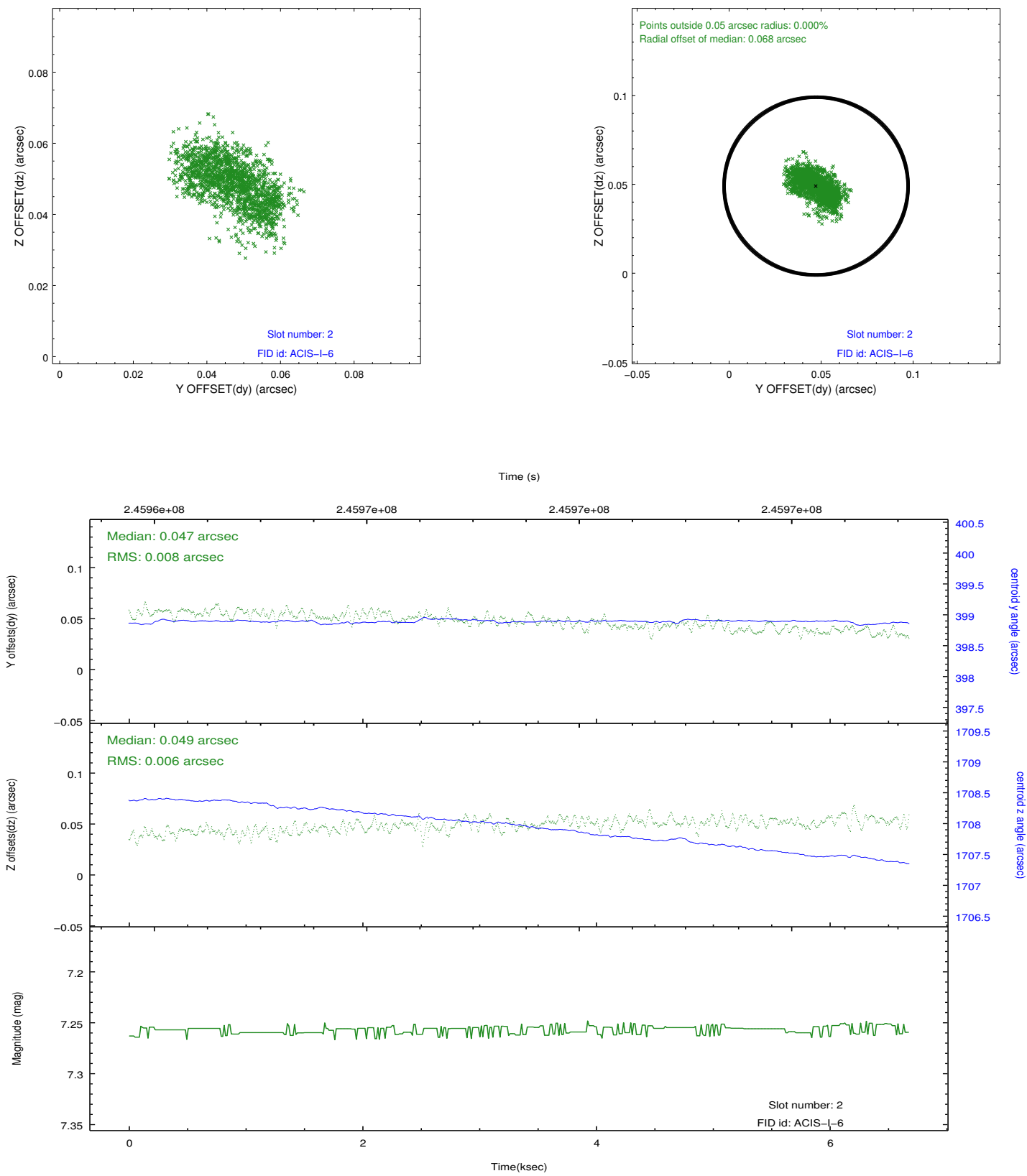
### 2.5.1 Slot 0



## 2.5.2 Slot 1



2.5.3 Slot 2



## A Summary

### A.1 Status

V&V Scientist	Beth Sundheim
V&V Date (YYYY-MM-DD)	2013.01.27
V&V Edition	1
V&V Disposition and Status	OK
V&V Charge Time	6.677399

### A.2 Comments

Roll preference was not met.