

V&V Reference Report

L2 ASCDS Version : 7.6.7.1

Observation 7187 - L2 Version 002
Chandra X-Ray Center

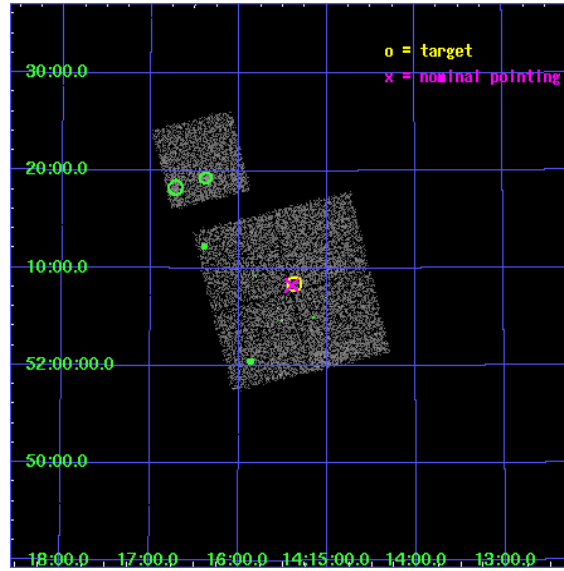
L2 Processing Date : Apr 2 2006

Contents

1	Front	2
2	OBI	3
2.1	OBI	3
2.1.1	Images	3
2.1.2	Bias	3
2.1.3	Parameters	4
2.1.4	Events	4
2.2	Compared Parameters	5
2.3	Aspect	6
2.4	Star Slots	9
2.4.1	Slot 3	9
2.4.2	Slot 4	10
2.4.3	Slot 5	11
2.4.4	Slot 6	12
2.4.5	Slot 7	13
2.5	FID Slots	14
2.5.1	Slot 0	14
2.5.2	Slot 1	15
2.5.3	Slot 2	16
3	Point Sources	17
A	Summary	18
A.1	Status	18
A.2	Comments	18

1 Front

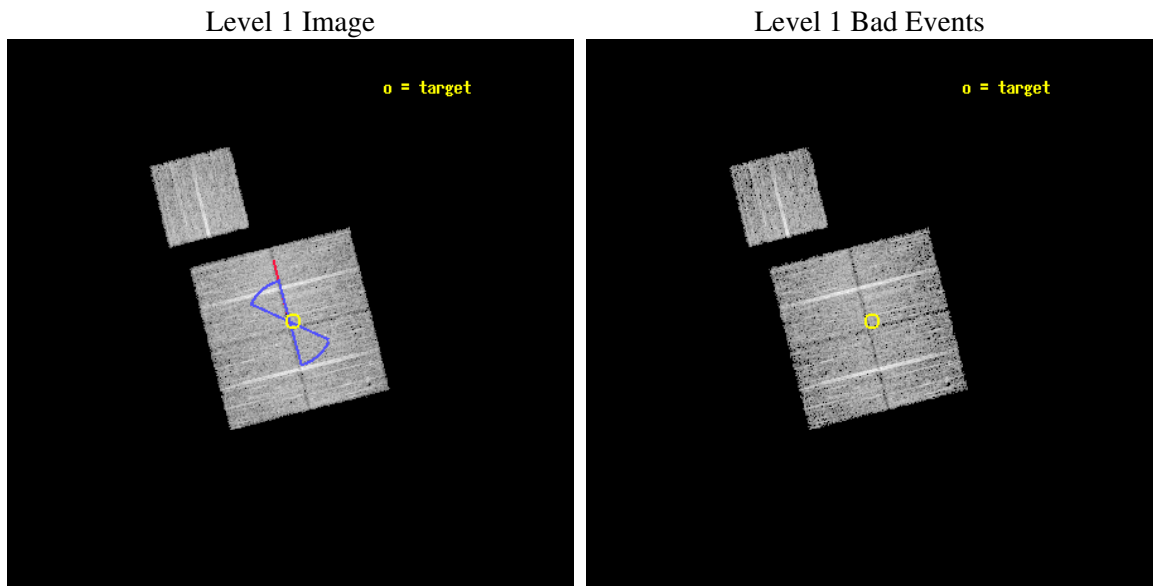
seq_num	900354
obs_id	7187
title	Deep Chandra Imaging of the Extended Groth Strip: The Co-evolution of Black Holes and Galaxies
observer	Professor Kirpal Nandra
object	EGS-7
dtcycle	0
cycle	P
ra_targ	213.843735
dec_targ	52.140667
ra_nom	213.84962143932
dec_nom	52.137850246289
roll_nom	345.96004896619
revision	2
ontime	6677.3999871612
livetime	6590.1548404985
ontime0	6674.2589968741
ontime1	6677.3999871612
ontime2	6677.3999871612
ontime3	6677.3999871612
ontime6	6677.3999871612
l2events	18212



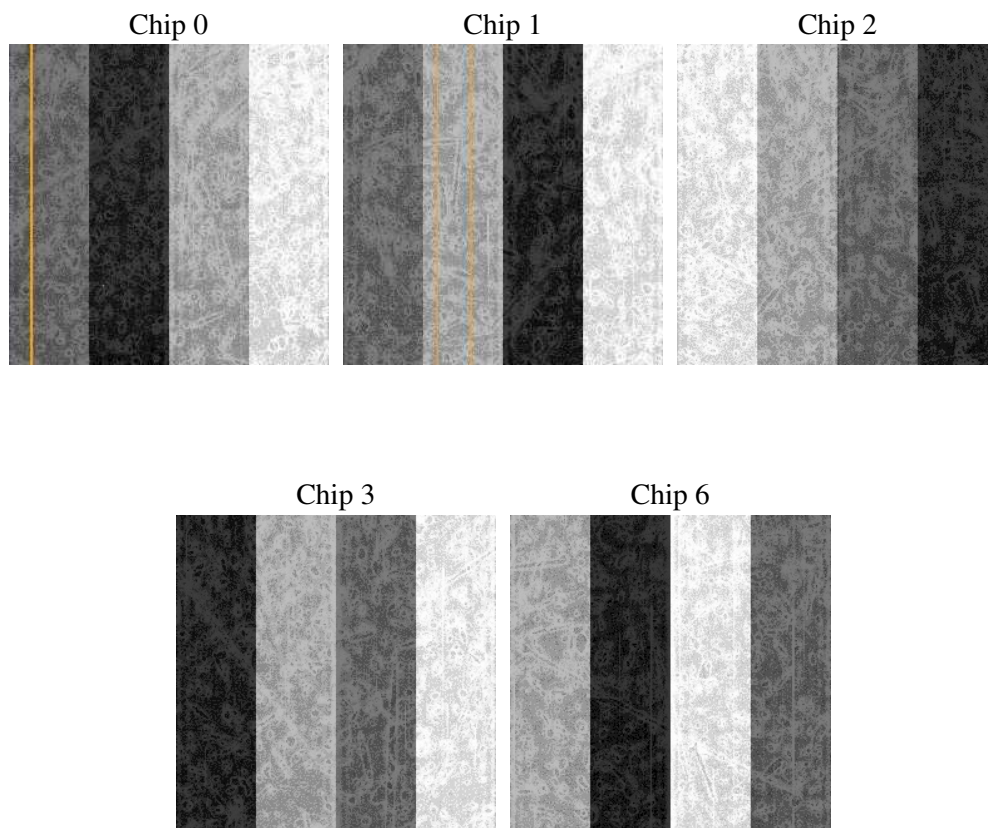
2 OBI

2.1 OBI

2.1.1 Images



2.1.2 Bias



2.1.3 Parameters

obi_num	0
ascdsver	7.6.7.1
caldsver	3.2.1
date	2006-04-02T09:30:51
revision	2

sched_exp_time	6500.000000
ontime	6787.72090289
ontime0	6784.5799126029
ontime1	6787.72090289
ontime2	6787.72090289
ontime3	6787.72090289
ontime6	6787.72090289
l1events	215339

2.1.4 Events

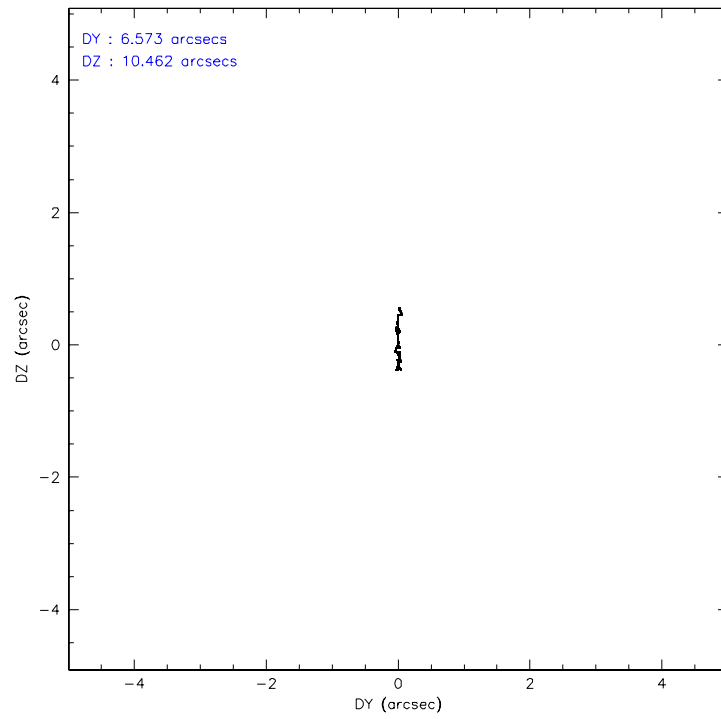
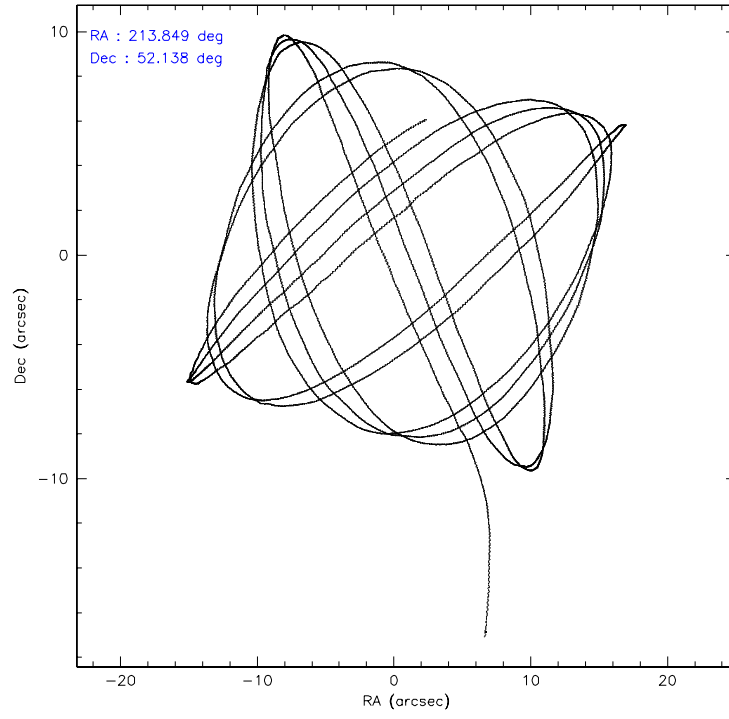
	ccd 0	ccd 1	ccd 2	ccd 3	ccd 6
level 1 events	41245	42151	46050	42366	43527
rejected events	36870	37293	41748	38386	39093
rejected %	89%	88%	90%	90%	89%

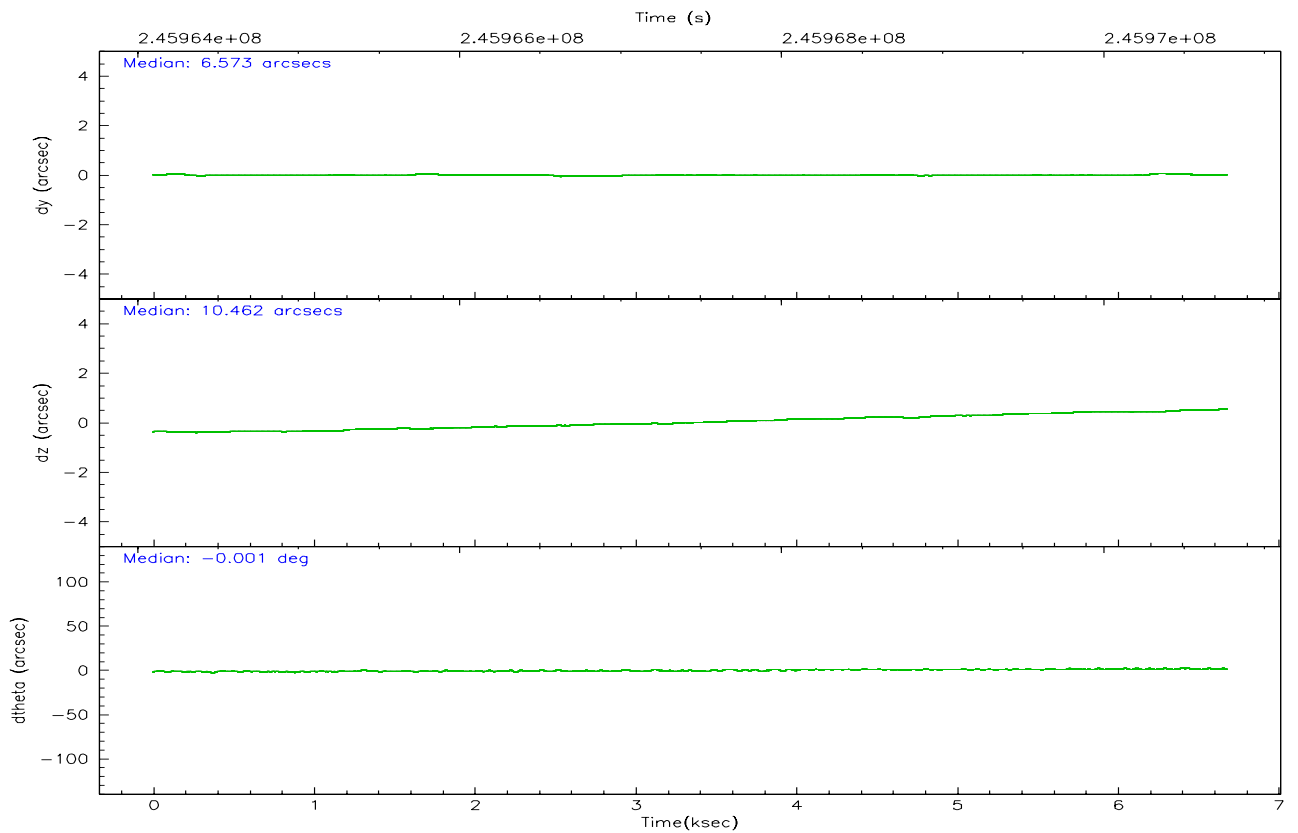
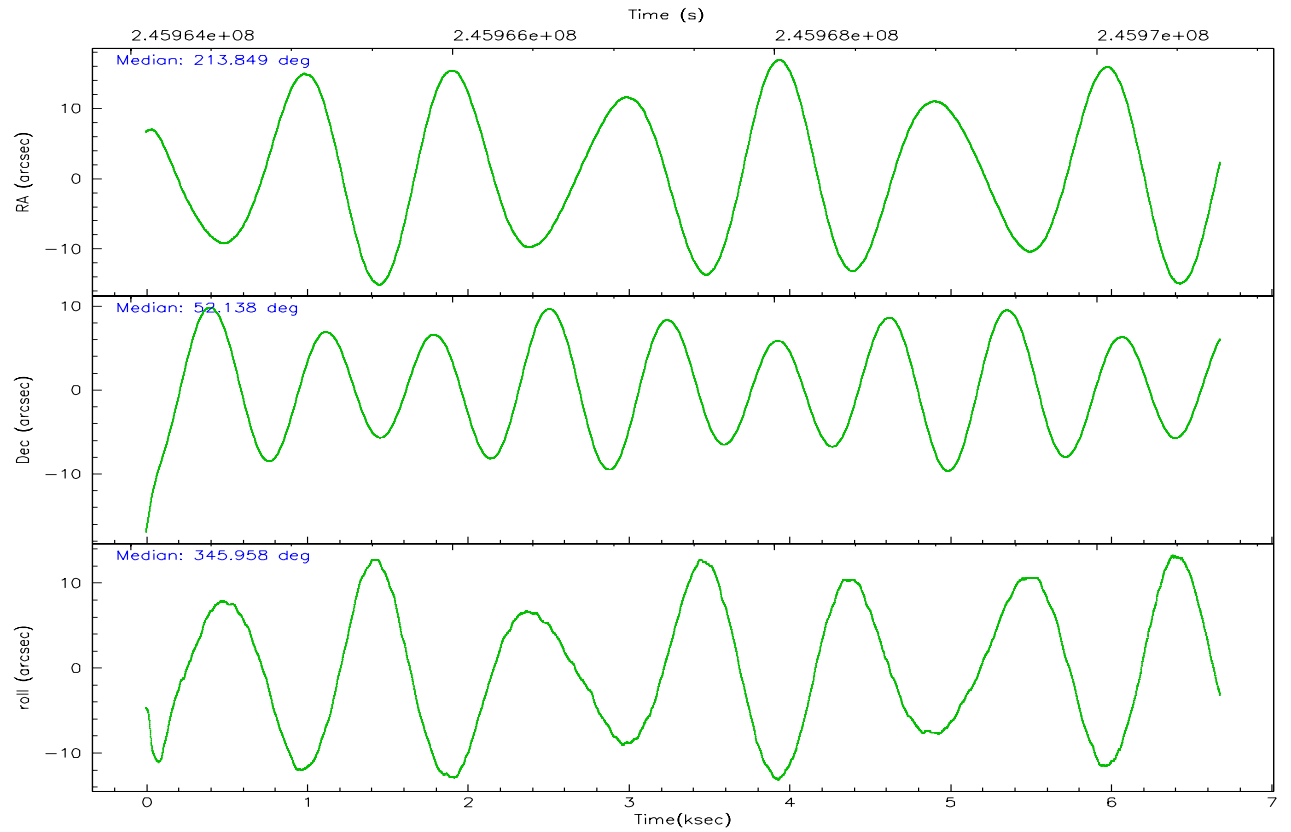
	ccd 0	ccd 1	ccd 2	ccd 3	ccd 6
grade 0 events	1562	1812	1541	1417	1580
	3%	4%	3%	3%	3%
grade 1 events	23	28	27	17	19
	0%	0%	0%	0%	0%
grade 2 events	1027	1112	1040	931	957
	2%	2%	2%	2%	2%
grade 3 events	530	554	483	446	542
	1%	1%	1%	1%	1%
grade 4 events	478	522	461	469	486
	1%	1%	1%	1%	1%
grade 5 events	1528	1653	1442	1721	1742
	3%	3%	3%	4%	4%
grade 6 events	843	932	852	776	965
	2%	2%	1%	1%	2%
grade 7 events	35254	35538	40204	36589	37236
	85%	84%	87%	86%	85%

2.2 Compared Parameters

Parameter	Planned	Actual	Parameter	Planned	Actual
Instrument	ACIS	ACIS	Obspar format version number	6	6
Detector	ACIS-01236	ACIS-01236	Obspar file type	PREDICTED	ACTUAL
Grating	NONE	NONE	Obspar update status	NONE	UPDATED
Data mode	VFAINT	VFAINT	On-chip summing requested	N	N
Observation mode	POINTING	POINTING	Subarray requested	NONE	NONE
Pointing RA	213.806935	213.8496214393235	Alternating exposures requested	N	N
Pointing Dec	52.130227	52.13785024628943	Primary exposure time	0.000000	3.1
Pointing Roll	345.785047	345.9600489661871			
Roll angle	50.756000	50.756000			
Roll tolerance	25.000000	25.000000			
Roll constraint allows 180D rotation	Y	Y			
SIM focus pos (mm)	-0.782348	-0.7809083437167272			
SIM defocus (mm)	0	0.001439871863259334			
SIM translation stage pos (mm)	-233.592463	-233.5874344608287			
SIM translation stage offset (mm)	0	-0.005018542100998502			
Observation start time	245964273.184000	245963228.5908			
Observation start date	2005-10-17T19:23:29	2005-10-17T19:07:08			
Observation end time	245970773.184000	245971576.19118			
Observation end date	2005-10-17T21:11:49	2005-10-17T21:26:16			
Read mode	TIMED	TIMED			

2.3 Aspect



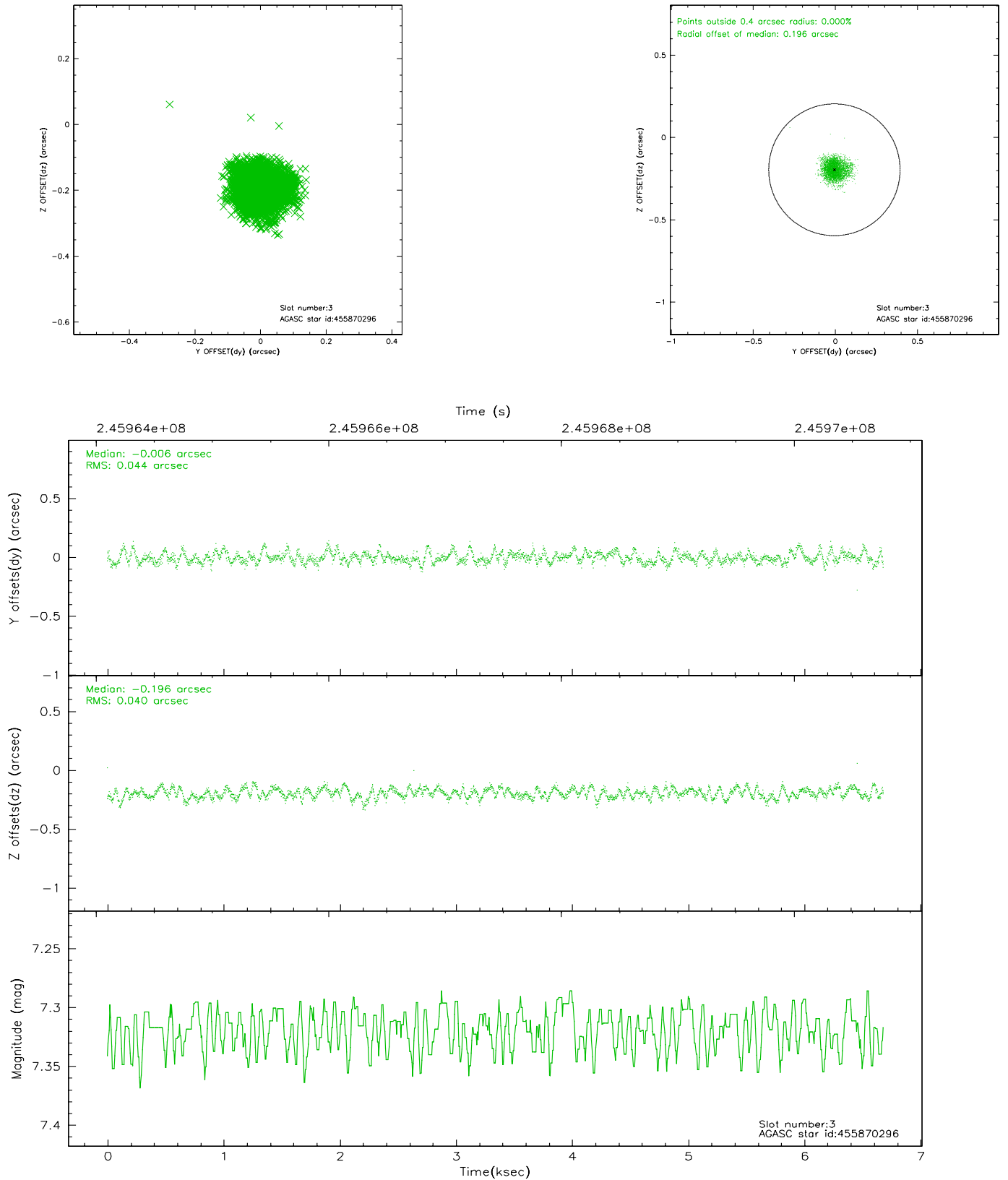


Slot Statistics

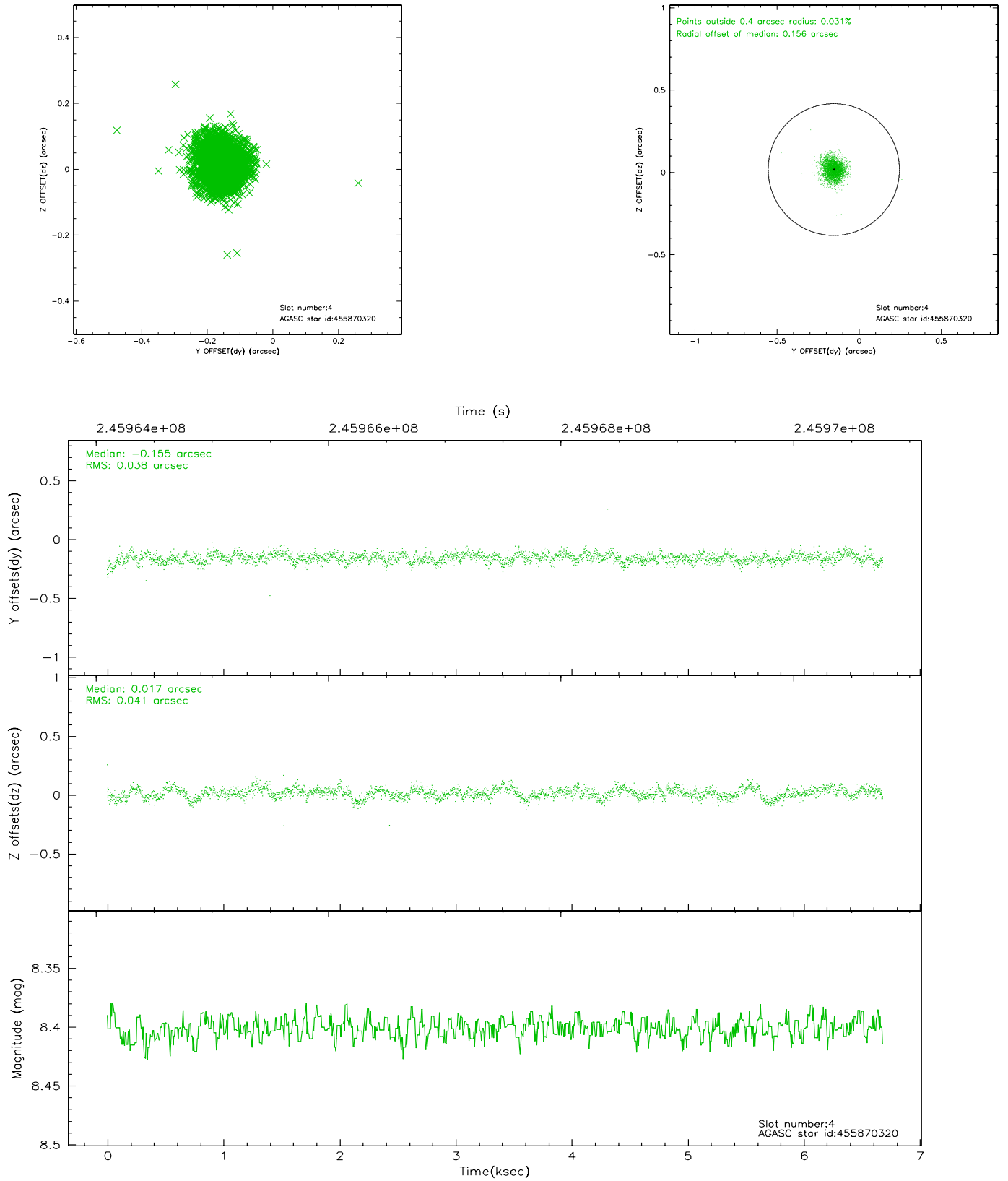
slot	status	id	mag	n_pts	med_dy	med_dz	dr1	dr2	ra	dec	mean_y	mean_z
0	FID	ACIS-I-1	7.25	1630	0.009	0.005	0.015	0.023	0.000000	0.000000	933.12	-833.98
1	FID	ACIS-I-5	7.23	1629	-0.138	0.034	0.009	0.015	0.000000	0.000000	-1814.63	1063.13
2	FID	ACIS-I-6	7.26	1630	0.037	0.029	0.011	0.016	0.000000	0.000000	397.77	1708.59
3	GUIDE	455870296	7.32	3261	-0.006	-0.196	0.064	0.103	214.629779	52.033323	1850.06	119.39
4	GUIDE	455870320	8.40	3260	-0.155	0.017	0.058	0.096	214.874440	52.401638	2029.54	1539.95
5	GUIDE	455871720	9.90	3258	0.141	0.240	0.133	0.227	214.017360	52.072997	502.89	-83.74
6	GUIDE	504894728	8.82	3261	0.095	0.008	0.076	0.126	213.220892	52.722550	-1763.06	1758.46
7	GUIDE	505806936	7.00	3259	-0.078	-0.081	0.068	0.107	213.820815	52.535927	-329.46	1423.92

2.4 Star Slots

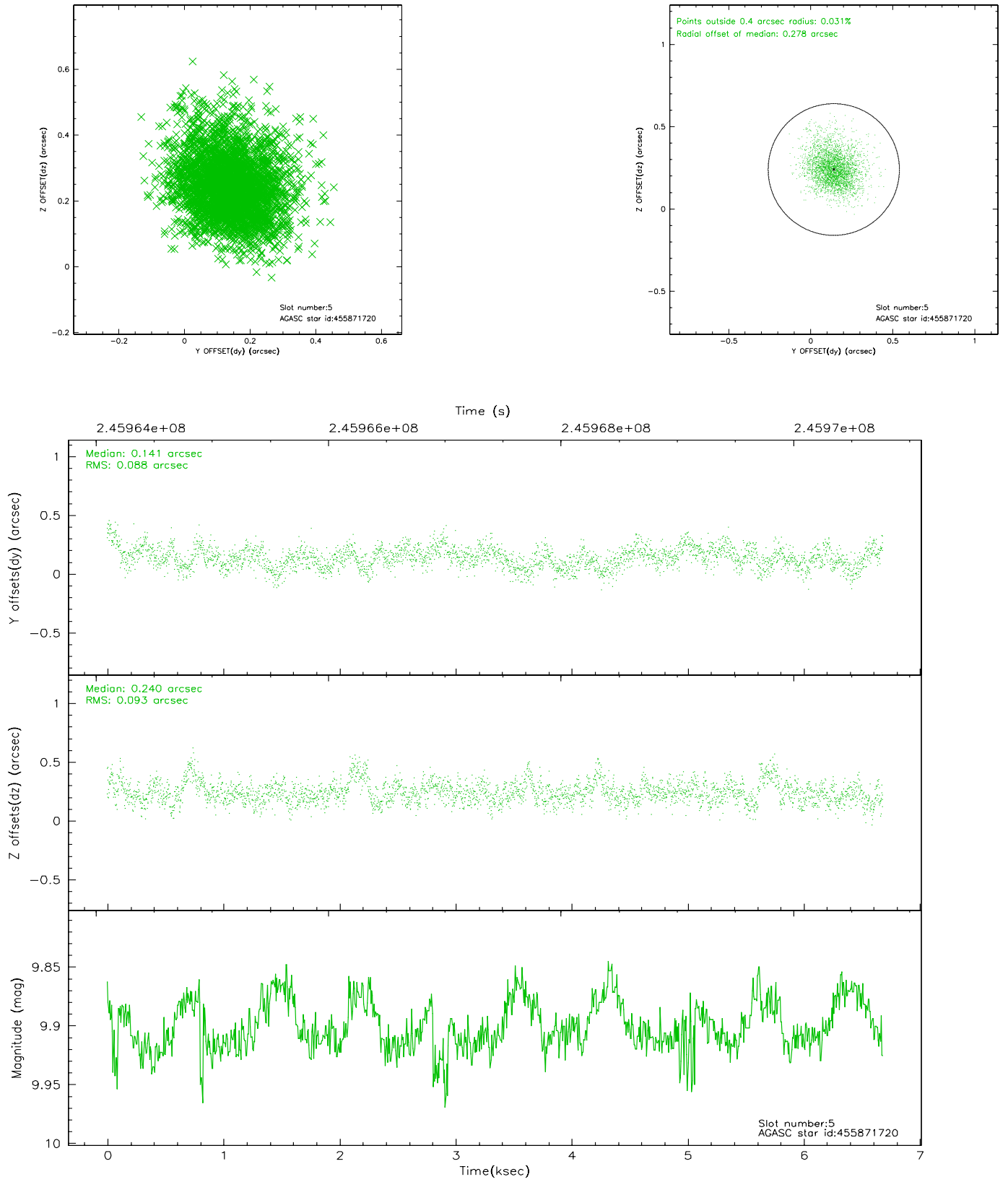
2.4.1 Slot 3



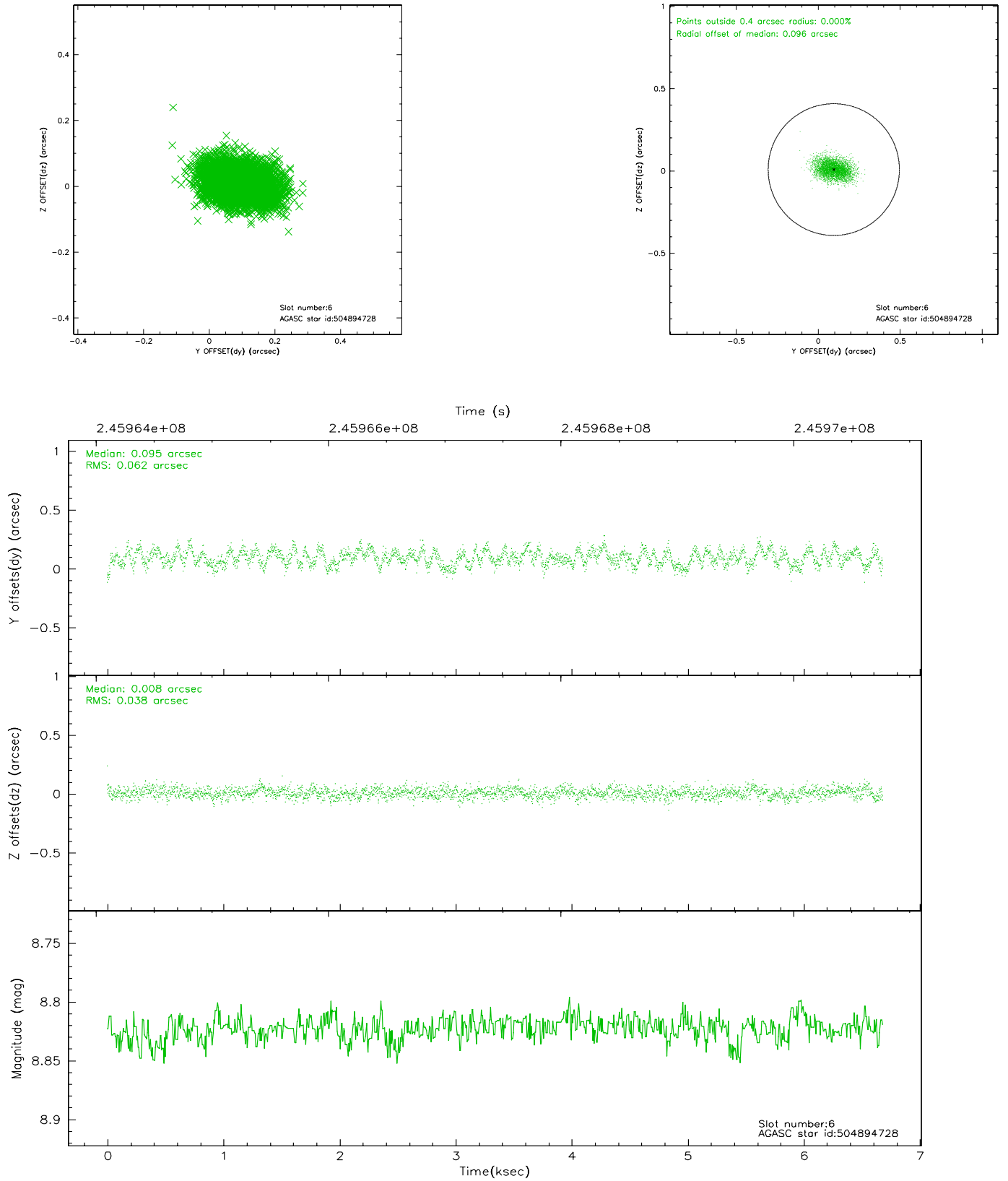
2.4.2 Slot 4



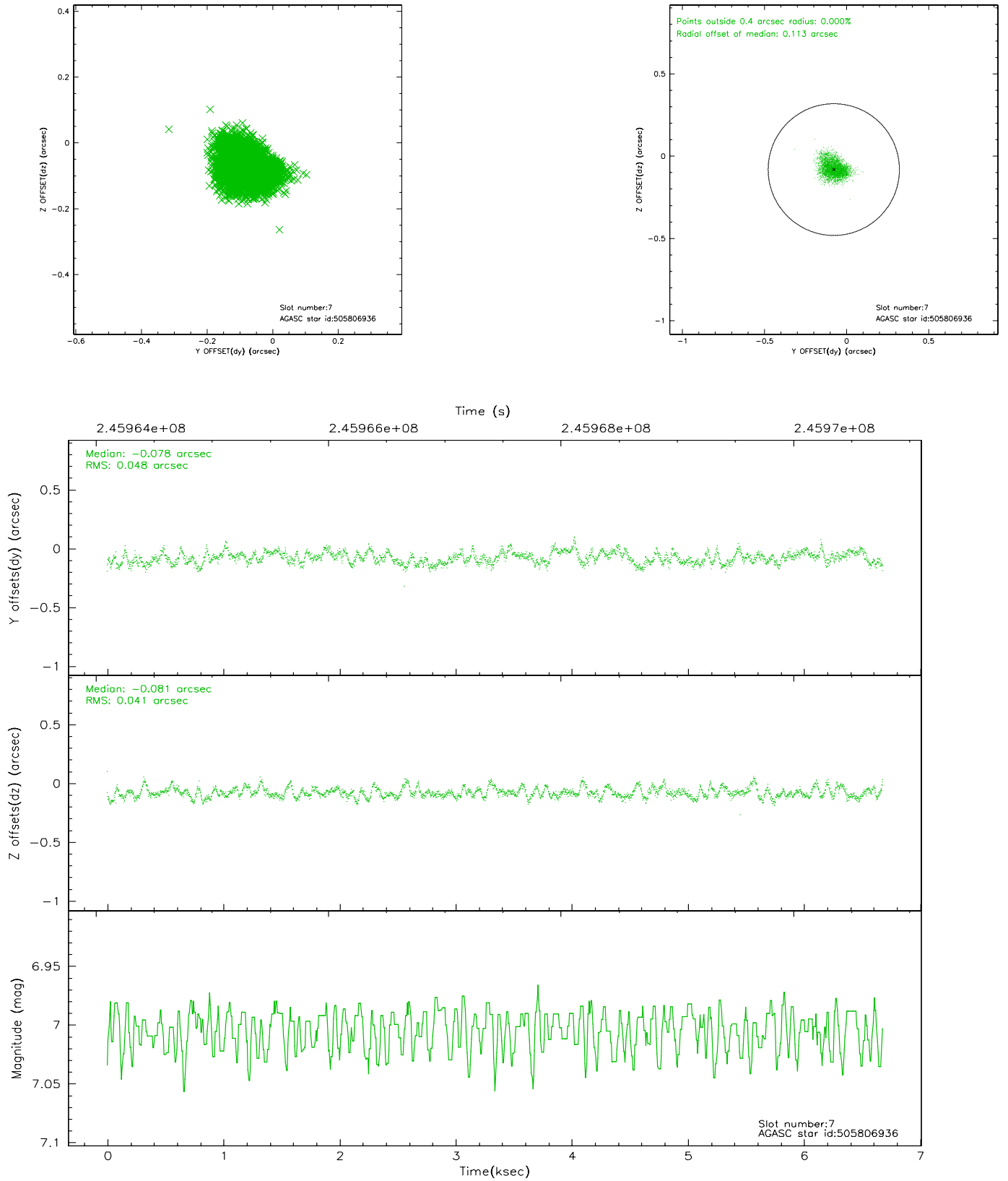
2.4.3 Slot 5



2.4.4 Slot 6

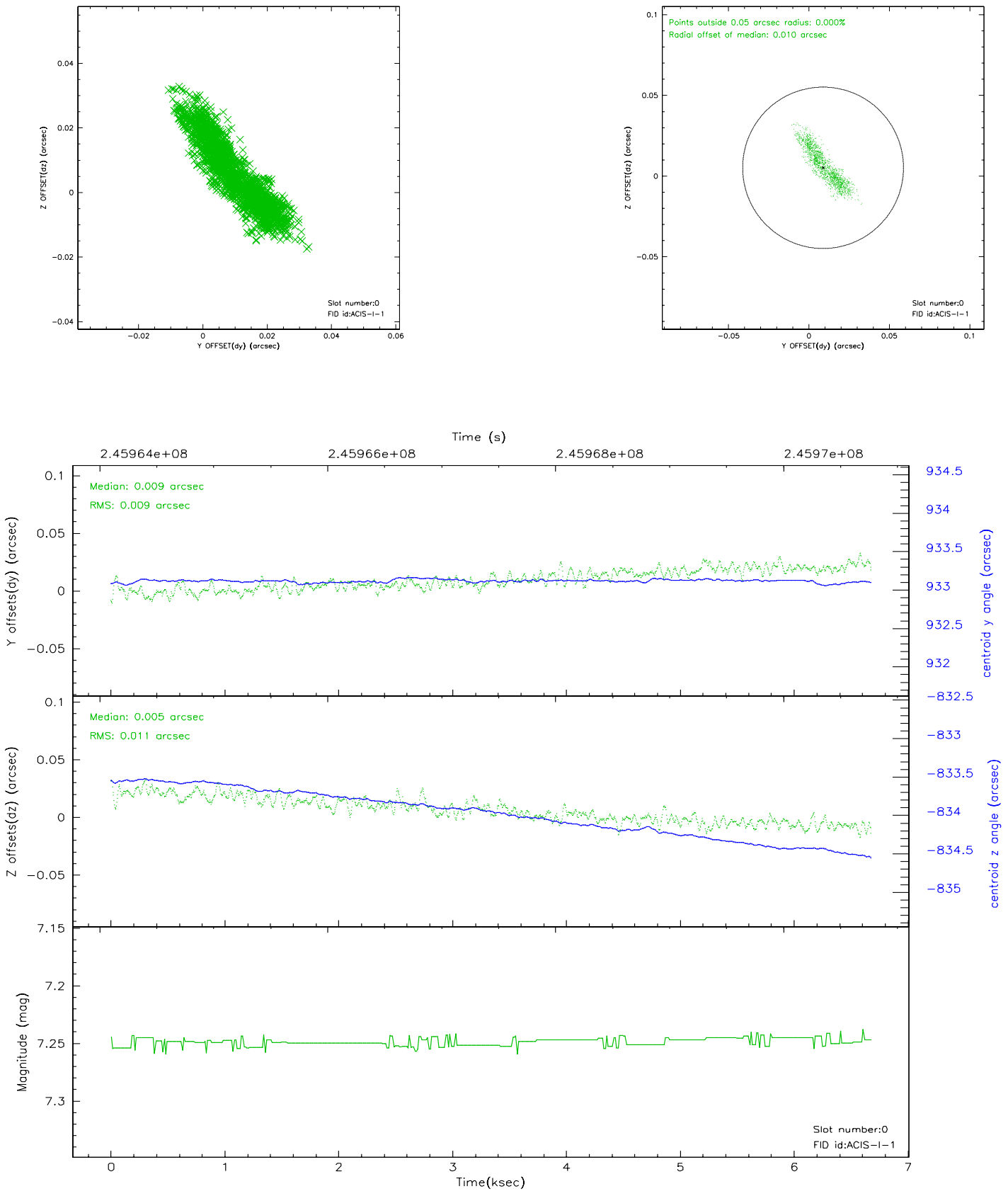


2.4.5 Slot 7

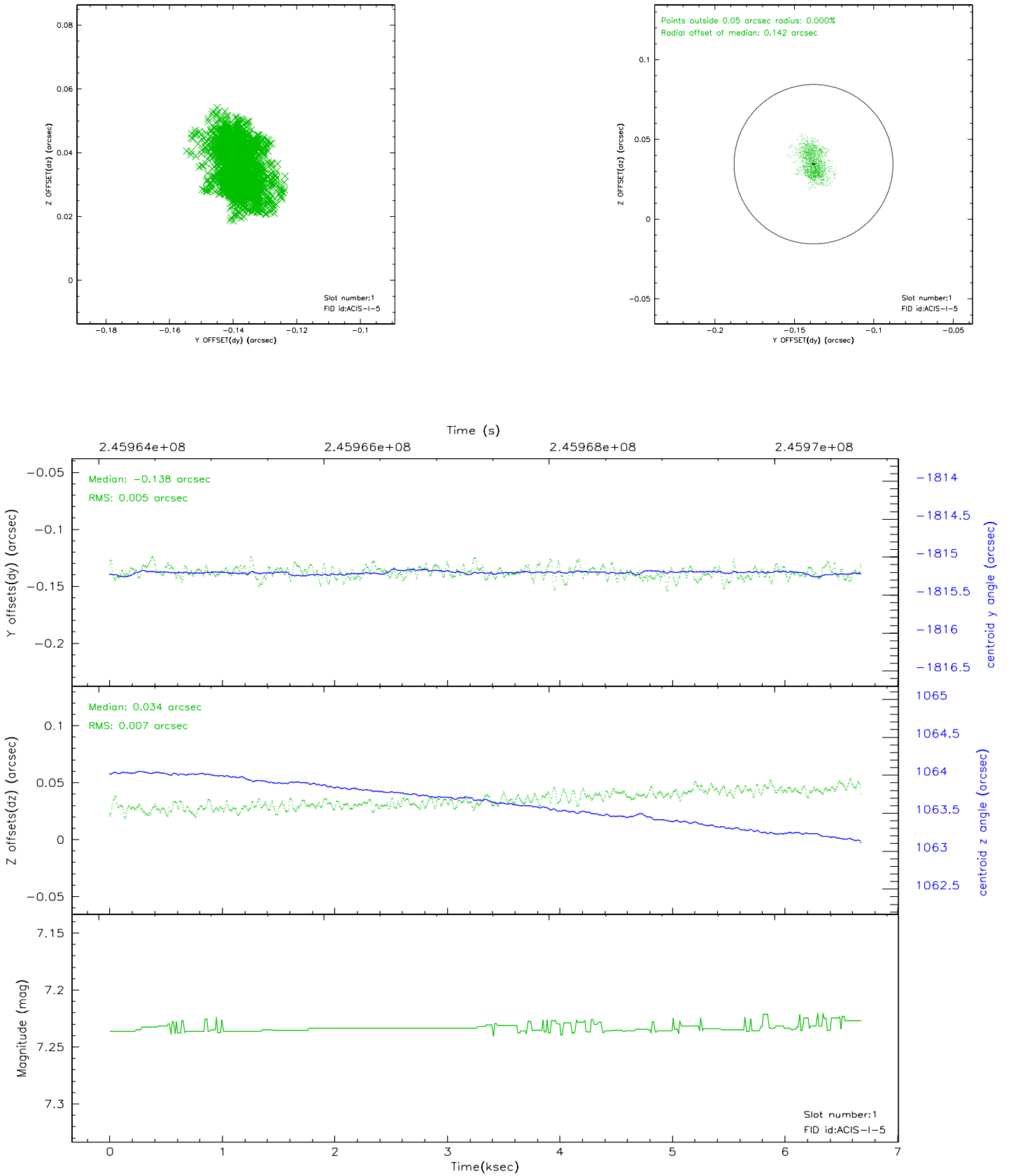


2.5 FID Slots

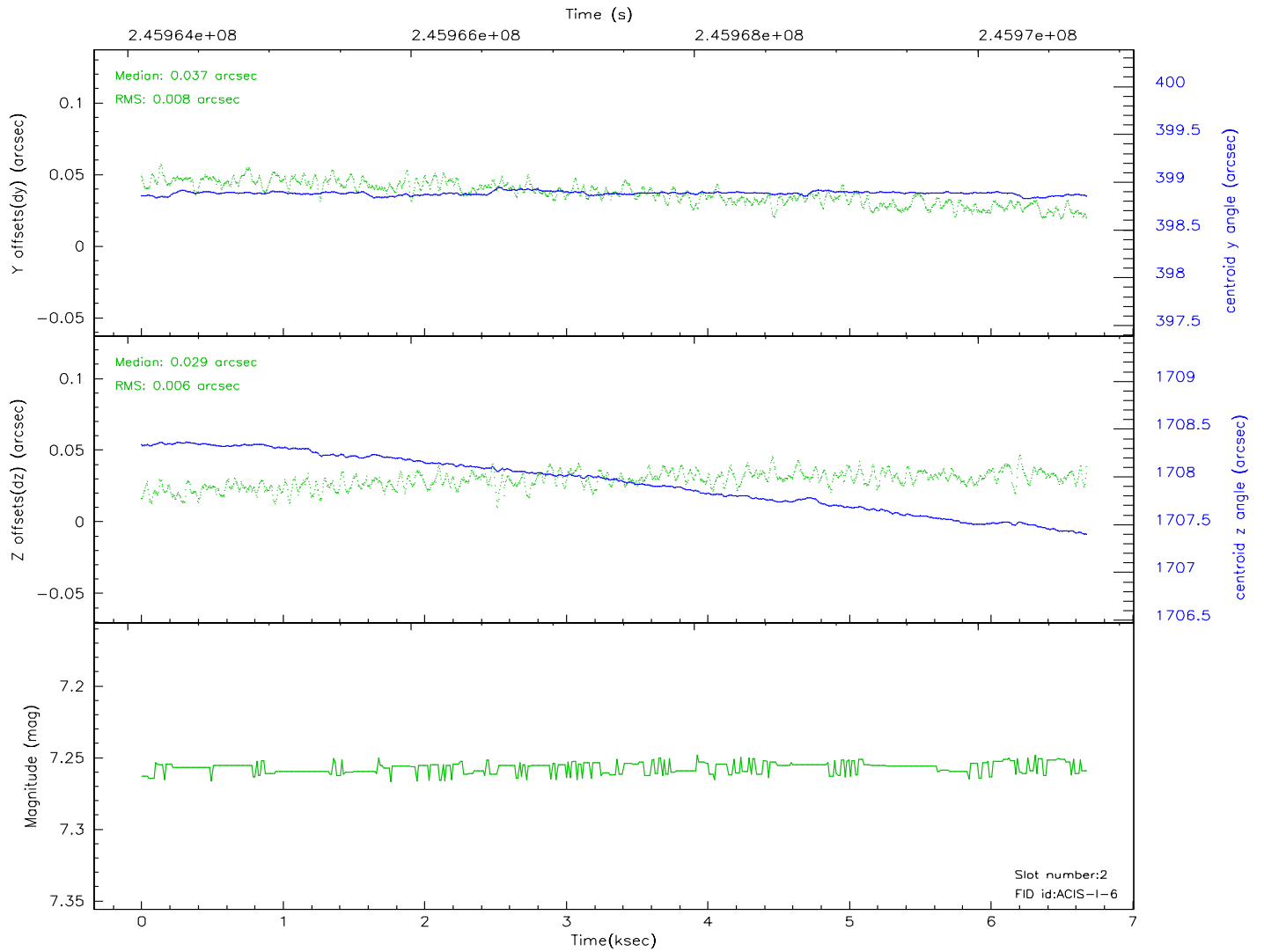
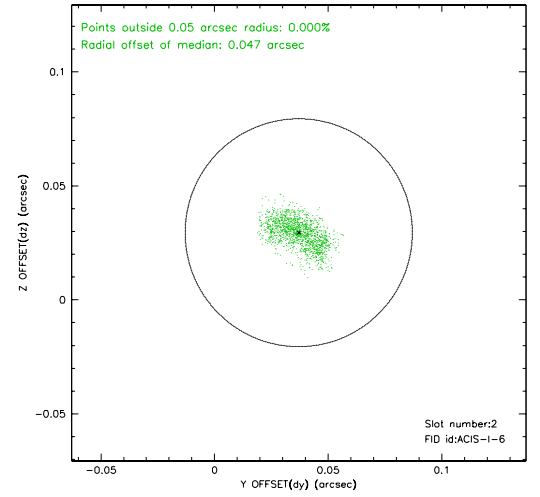
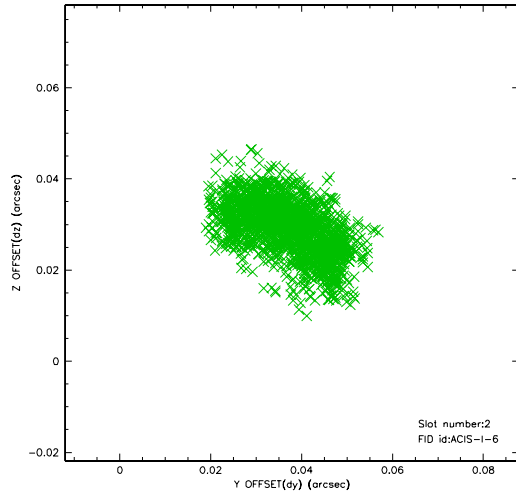
2.5.1 Slot 0



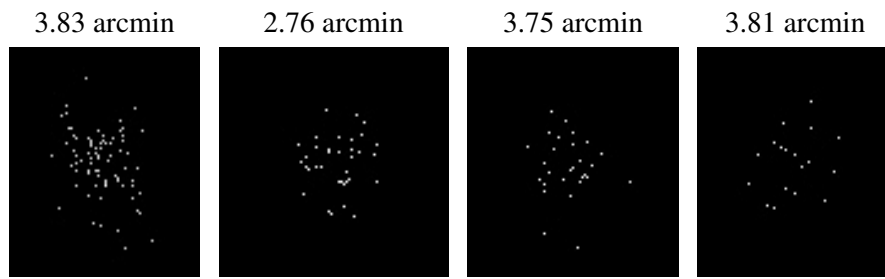
2.5.2 Slot 1



2.5.3 Slot 2



3 Point Sources



A Summary

A.1 Status

V&V Scientist	Jen Lauer
V&V Date (YYYY-MM-DD)	2006.04.03
V&V Edition	1
V&V Disposition and Status	OK
V&V Charge Time	6.677399

A.2 Comments

Roll constraint not met.