

# V&V Reference Report

## L2 ASCDS Version : 8.4.3.1

Observation 6787 - L2 Version 2  
Chandra X-Ray Center

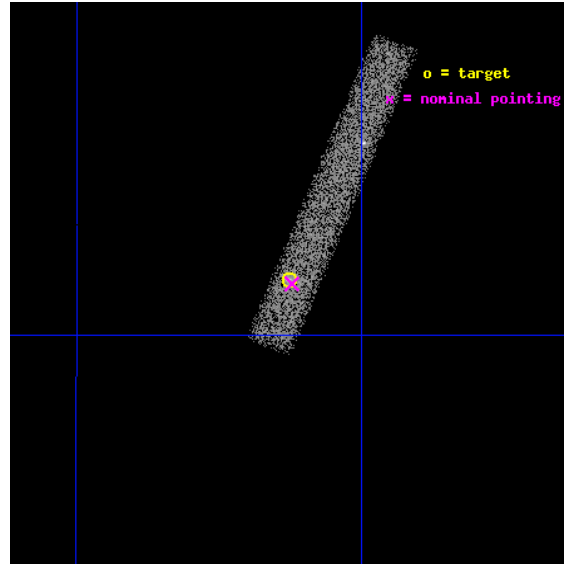
L2 Processing Date : Apr 7 2012

## Contents

<b>1</b>	<b>Front</b>	<b>2</b>
<b>2</b>	<b>OBI</b>	<b>3</b>
2.1	OBI . . . . .	3
2.1.1	Images . . . . .	3
2.1.2	Bias . . . . .	3
2.1.3	Parameters . . . . .	4
2.1.4	Events . . . . .	4
2.2	Compared Parameters . . . . .	5
2.3	Aspect . . . . .	6
2.4	Star Slots . . . . .	9
2.4.1	Slot 3 . . . . .	9
2.4.2	Slot 4 . . . . .	10
2.4.3	Slot 5 . . . . .	11
2.4.4	Slot 6 . . . . .	12
2.4.5	Slot 7 . . . . .	13
2.5	FID Slots . . . . .	14
2.5.1	Slot 0 . . . . .	14
2.5.2	Slot 1 . . . . .	15
2.5.3	Slot 2 . . . . .	16
<b>A</b>	<b>Summary</b>	<b>17</b>
A.1	Status . . . . .	17
A.2	Comments . . . . .	17

# 1 Front

seq_num	701205	Sequence number
obs_id	6787	Observation id
title	Active Galactic Nuclei in nearby galaxies: a new view of the origin of the radio-loud radio-quiet dichotomy?	Proposal title
observer	Dr. Alessandro Capetti	Principal investigator
object	UGC8745	Source name
dtcycle	0	&#160
cycle	P	events from which exps? Prim/Second/Both
ra_targ	207.313333	Observer's specified target RA [deg]
dec_targ	60.190556	Observer's specified target Dec [deg]
ra_nom	207.31115977974	Nominal RA [deg]
dec_nom	60.188759535134	Nominal Dec [deg]
roll_nom	293.06995321902	Nominal Roll [deg]
revision	2	Processing version of data
ontime	15179.599095225	Sum of GTIs [s]
livetime	13767.095134433	Livetime [s]
ontime7	15179.599095225	Sum of GTIs [s]
l2events	11005	Number of level 2 events

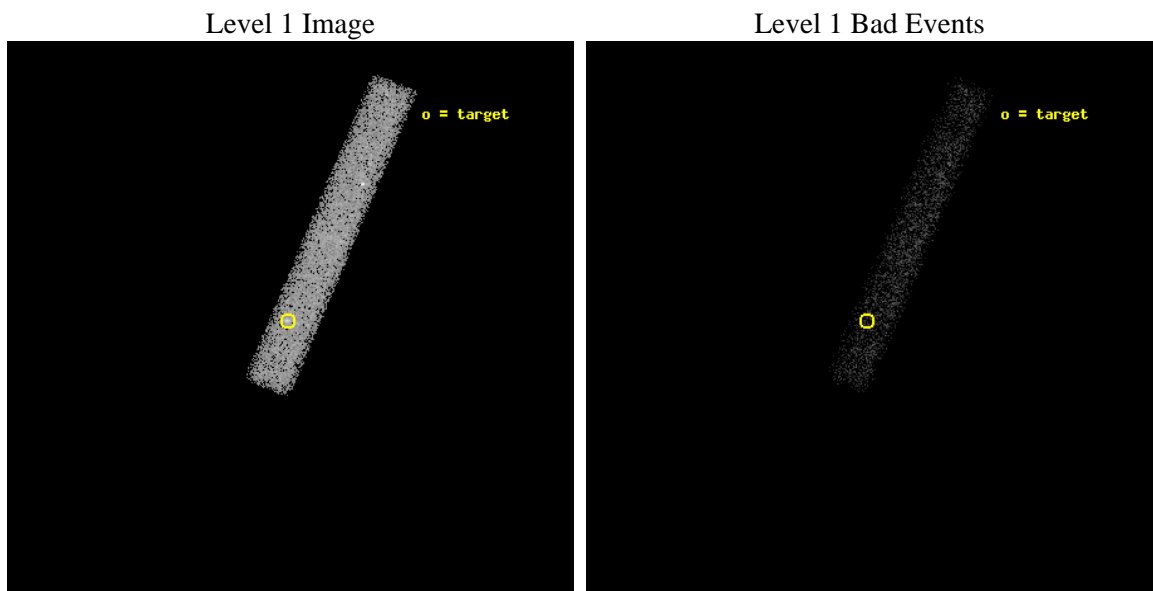




## 2 OBI

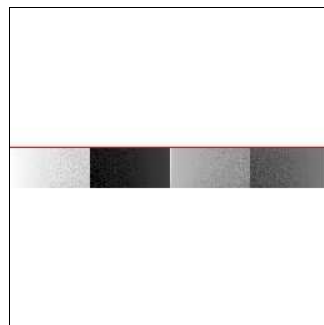
### 2.1 OBI

#### 2.1.1 Images



#### 2.1.2 Bias

Chip 7



### 2.1.3 Parameters

obi_num	0	Obi number	sched_exp_time	15000.000000	[s] Scheduled observation exposure time
ascdsver	8.4.3.1	Processing system revision	ontime	15179.599095225	Sum of GTIs [s]
caldsver	4.4.9	&#160	ontime7	15179.599095225	Sum of GTIs [s]
date	2012-04-08T00:11:19	Date and time of file creation	l1events	24685	Number of level 1 events
revision	2	Processing version of data			

### 2.1.4 Events

	<b>ccd 7</b>
level 1 events	24685
rejected events	13238
rejected %	53%

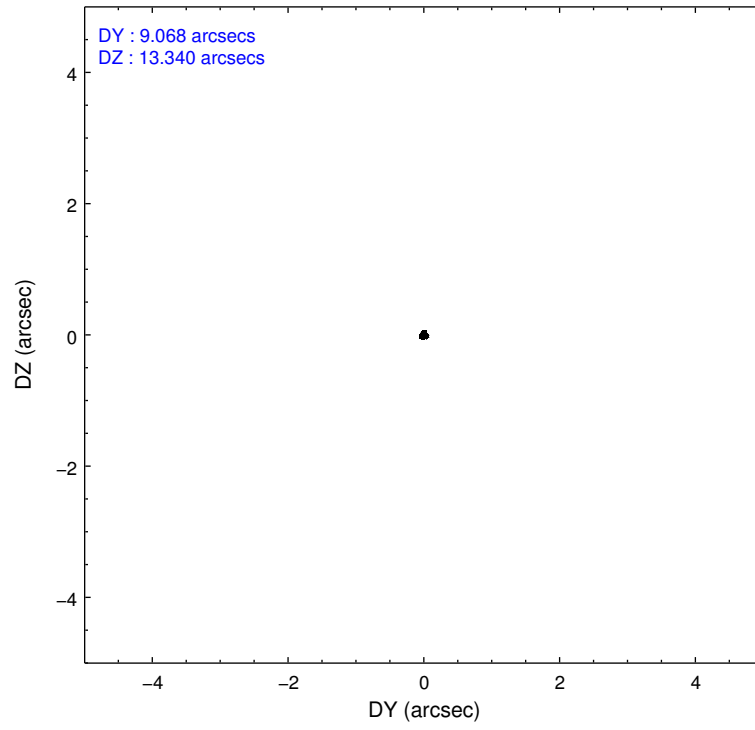
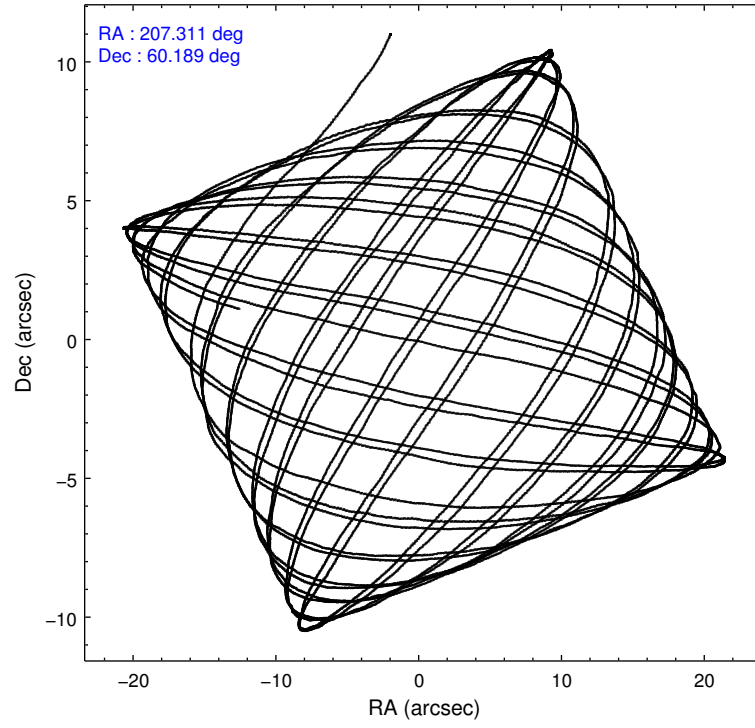
	<b>ccd 7</b>
grade 0 events	1373
	5%
grade 1 events	35
	0%
grade 2 events	2291
	9%
grade 3 events	1517
	6%
grade 4 events	1367
	5%
grade 5 events	2246
	9%
grade 6 events	5145
	20%
grade 7 events	10711
	43%

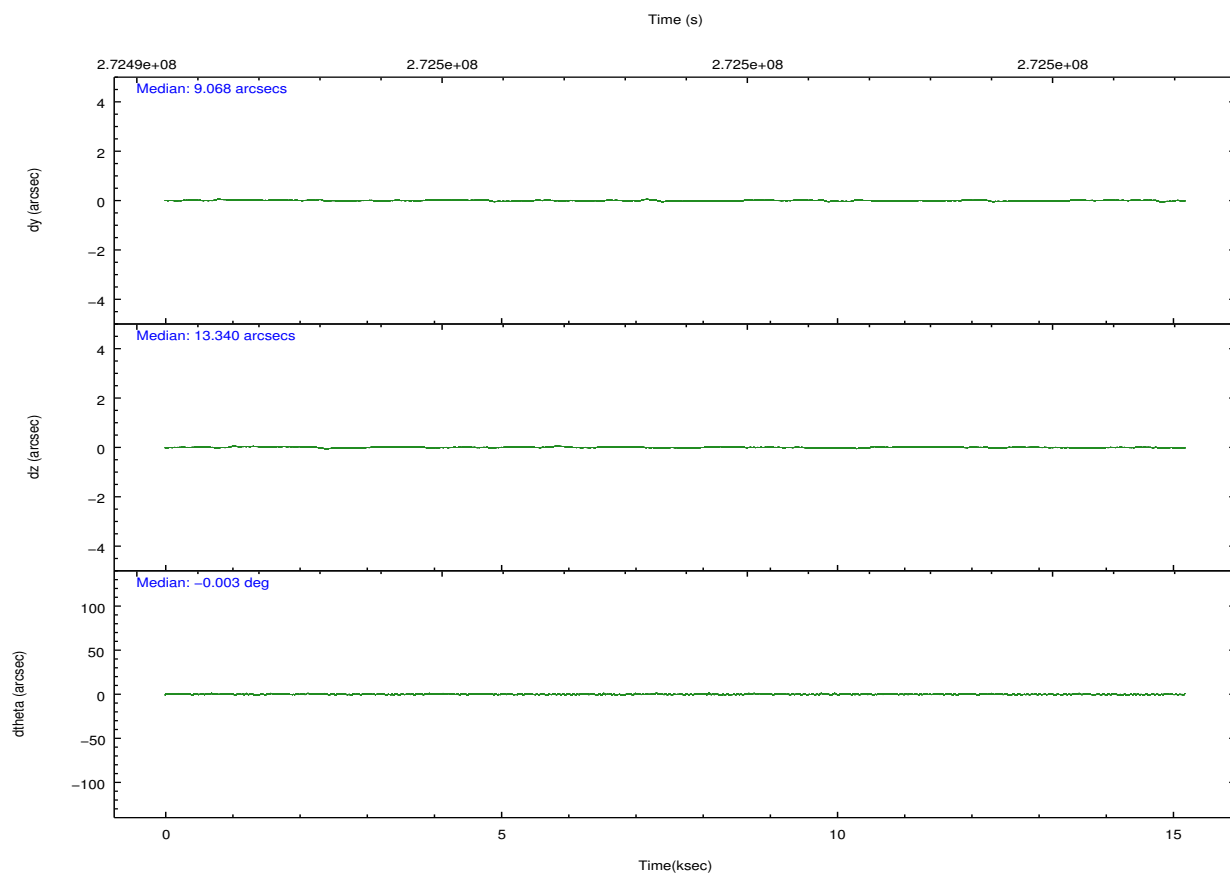
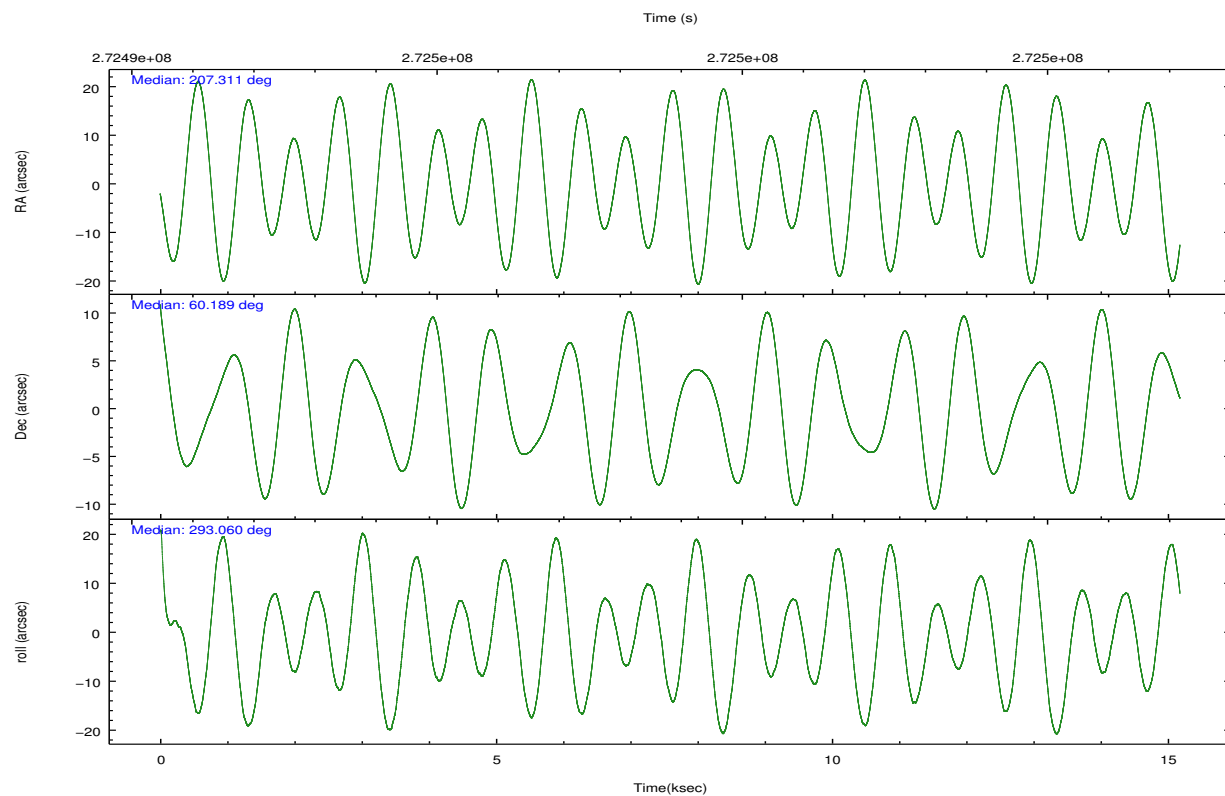
## 2.2 Compared Parameters

Parameter	Planned	Actual
Instrument	ACIS	ACIS
Detector	ACIS-7	ACIS-7
Grating	NONE	NONE
Data mode	VFAINT	VFAINT
Observation mode	POINTING	POINTING
[deg] Pointing RA	207.266976	207.3111597797446
[deg] Pointing Dec	60.204813	60.18875953513385
[deg] Pointing Roll	292.951638	293.0699532190172
[mm] SIM focus pos	-0.684267	-0.6828225247311905
[mm] SIM defocus	0	0.001444936568705701
[mm] SIM translation stage pos	-190.132523	-190.145094680475
[mm] SIM translation stage offset	0	0.01257209746719923
[s] Observation start time (MET)	272491403.184000	272490618.8124
Observation start date	2006-08-20T20:02:18	2006-08-20T19:50:18
[s] Observation end time (MET)	272506403.184000	272507114.65068
Observation end date	2006-08-21T00:12:18	2006-08-21T00:25:14
Read mode	TIMED	TIMED

Parameter	Planned	Actual
Obspar format version number	7	7
Obspar file type	PREDICTED	ACTUAL
Obspar update status	NONE	UPDATED
Number of optional ACIS chips dropped	0	0
On-chip summing requested	N	N
Subarray requested	CUSTOM	1/8
Subarray start row	449	449
Subarray row count	128	128
Alternating exposures requested	N	N
[s] Primary exposure time	0.000000	0.4

## 2.3 Aspect



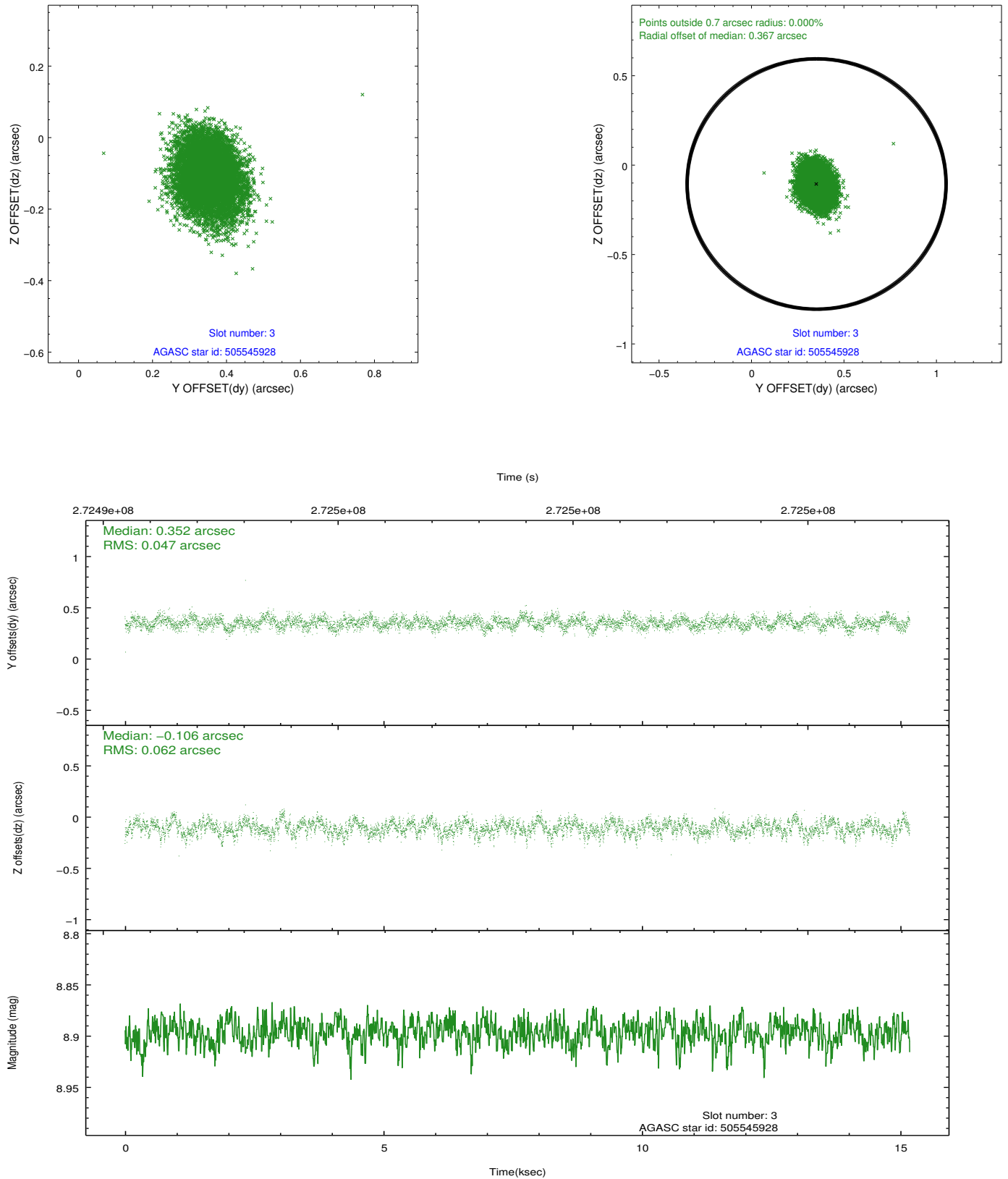


### Slot Statistics

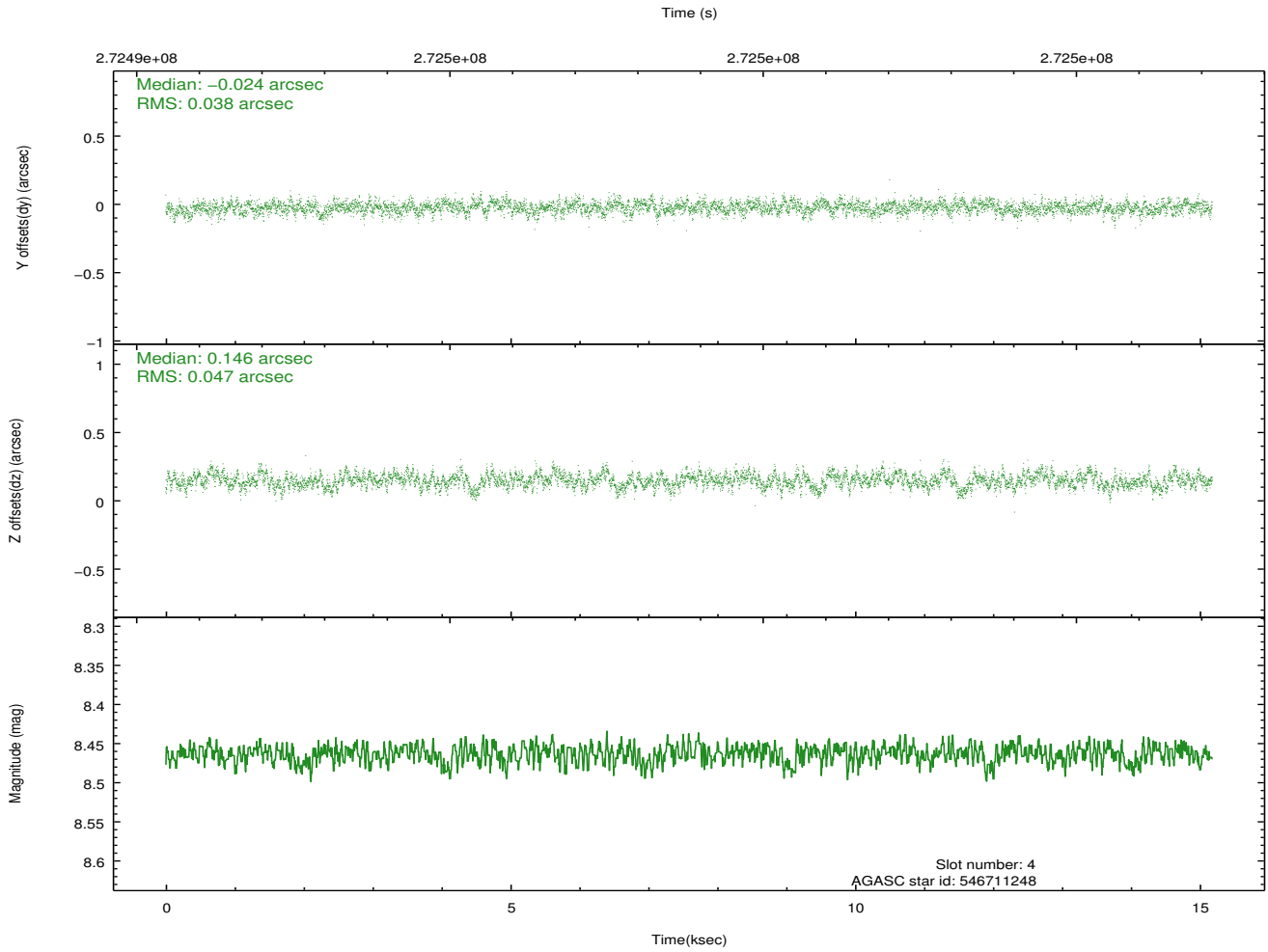
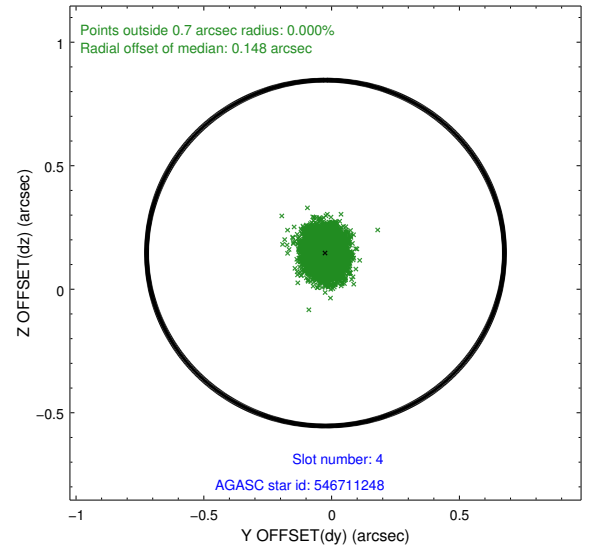
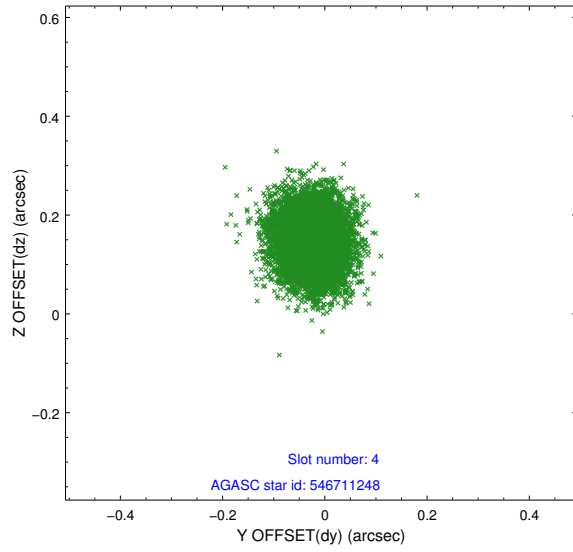
slot	status	id	mag	n_pts	med_dy	med_dz	dr1	dr2	ra	dec	mean_y	mean_z
0	FID	ACIS-S-2	7.10	3703	-0.074	-0.040	0.005	0.010	0.000000	0.000000	-761.97	-1734.60
1	FID	ACIS-S-4	7.20	3703	0.083	0.038	0.006	0.010	0.000000	0.000000	2151.35	173.62
2	FID	ACIS-S-6	7.35	3703	-0.037	0.010	0.007	0.011	0.000000	0.000000	400.46	811.34
3	GUIDE	505545928	8.90	7402	0.352	-0.106	0.082	0.132	206.623191	59.944802	405.14	-1431.40
4	GUIDE	546711248	8.46	7404	-0.024	0.146	0.064	0.106	207.532370	60.520351	-863.22	876.38
5	GUIDE	546712240	8.61	7403	-0.034	0.101	0.077	0.129	206.739828	60.167374	-247.05	-919.95
6	GUIDE	546712176	7.56	7405	-0.296	-0.238	0.072	0.111	205.967658	60.145538	-732.08	-2218.50
7	GUIDE	505545744	9.59	7369	0.004	0.096	0.121	0.195	208.463630	59.902664	1825.97	1572.22

## 2.4 Star Slots

### 2.4.1 Slot 3

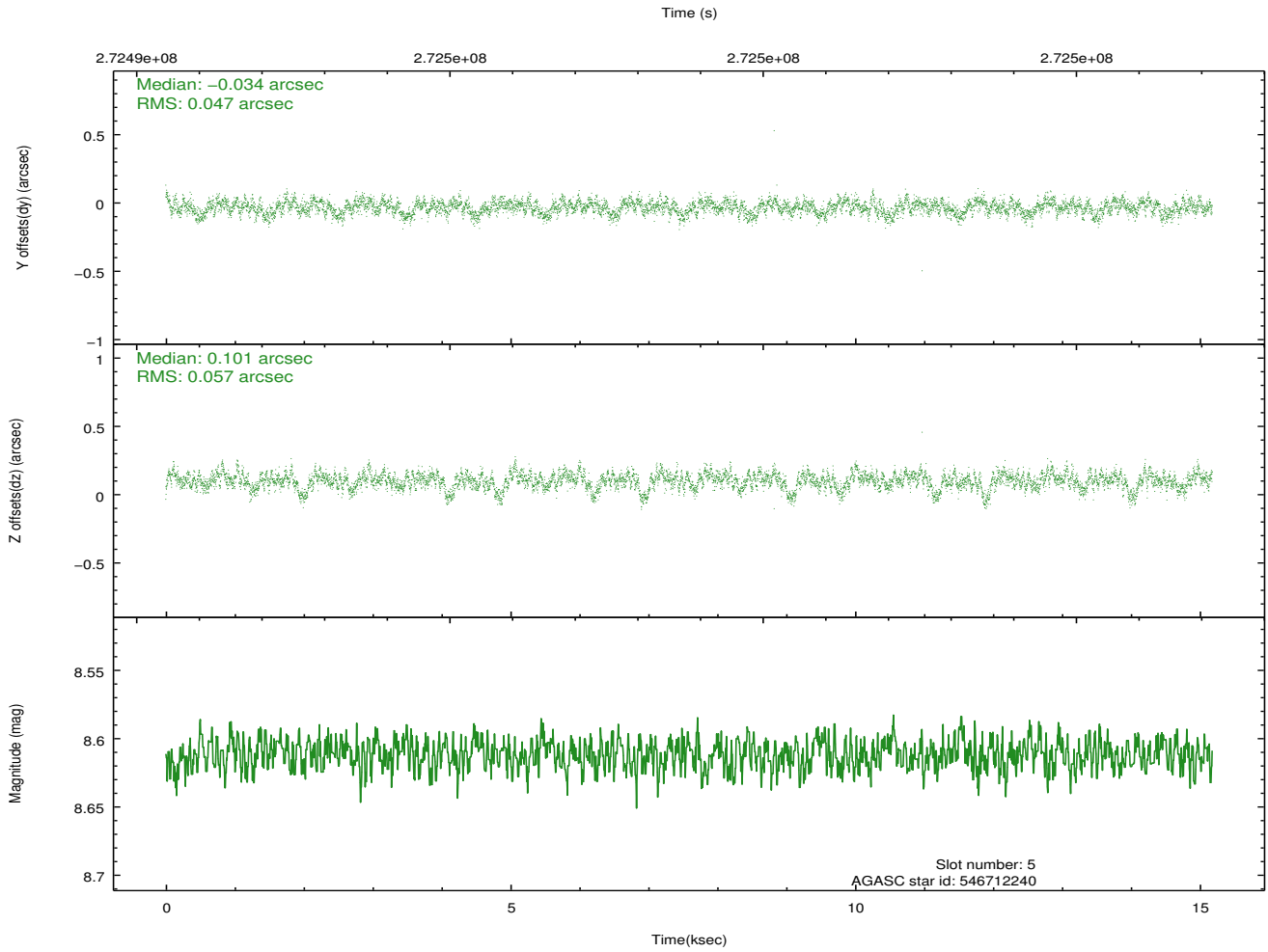
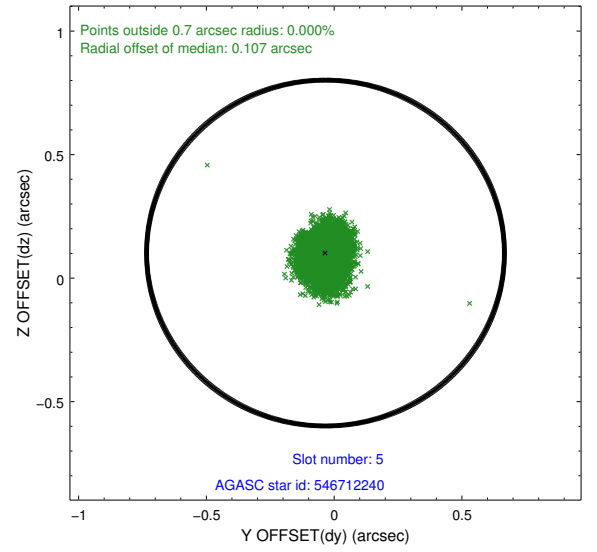
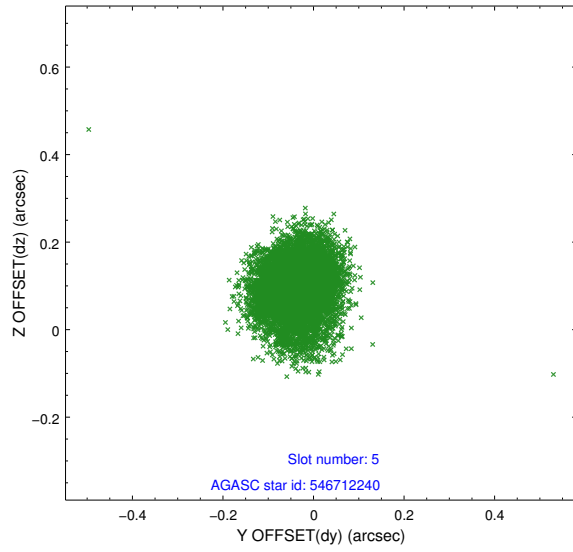


## 2.4.2 Slot 4

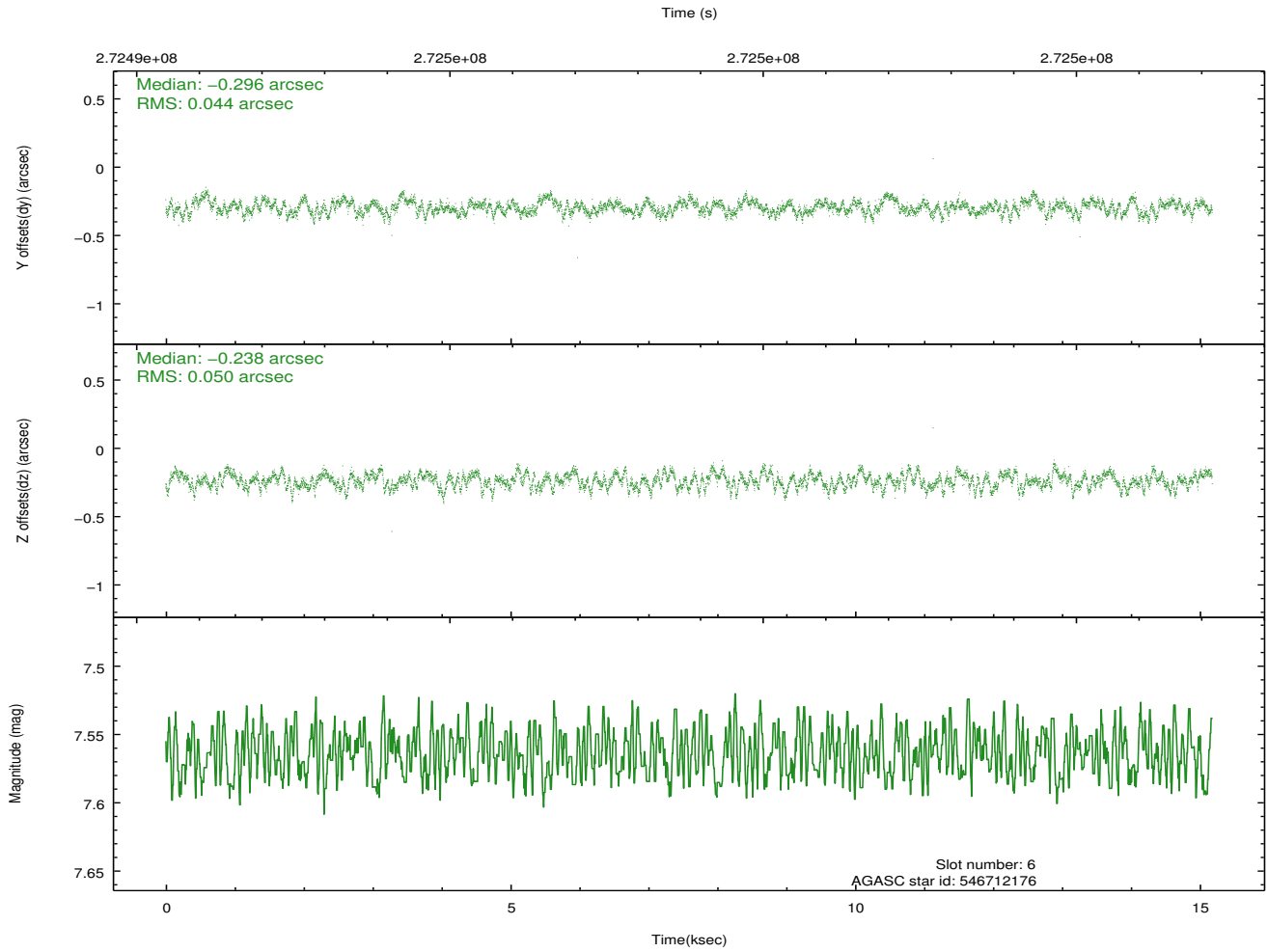
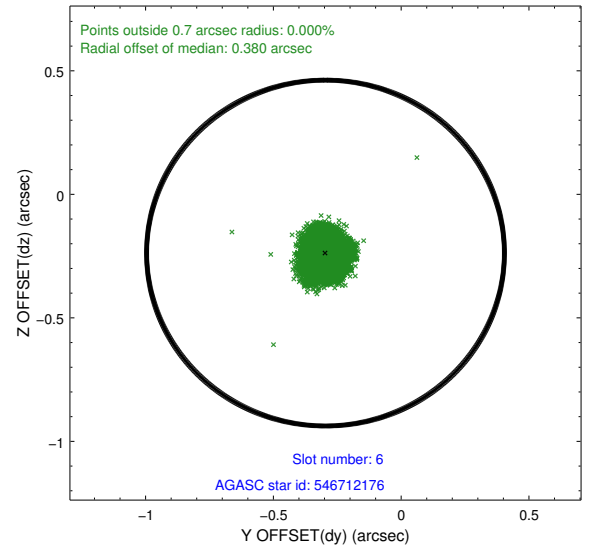
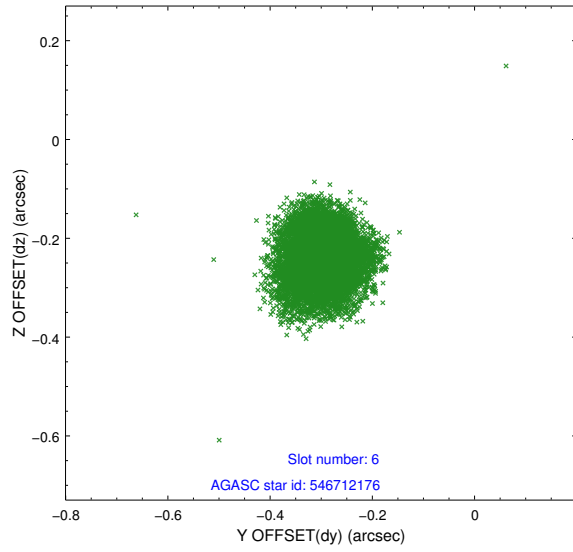




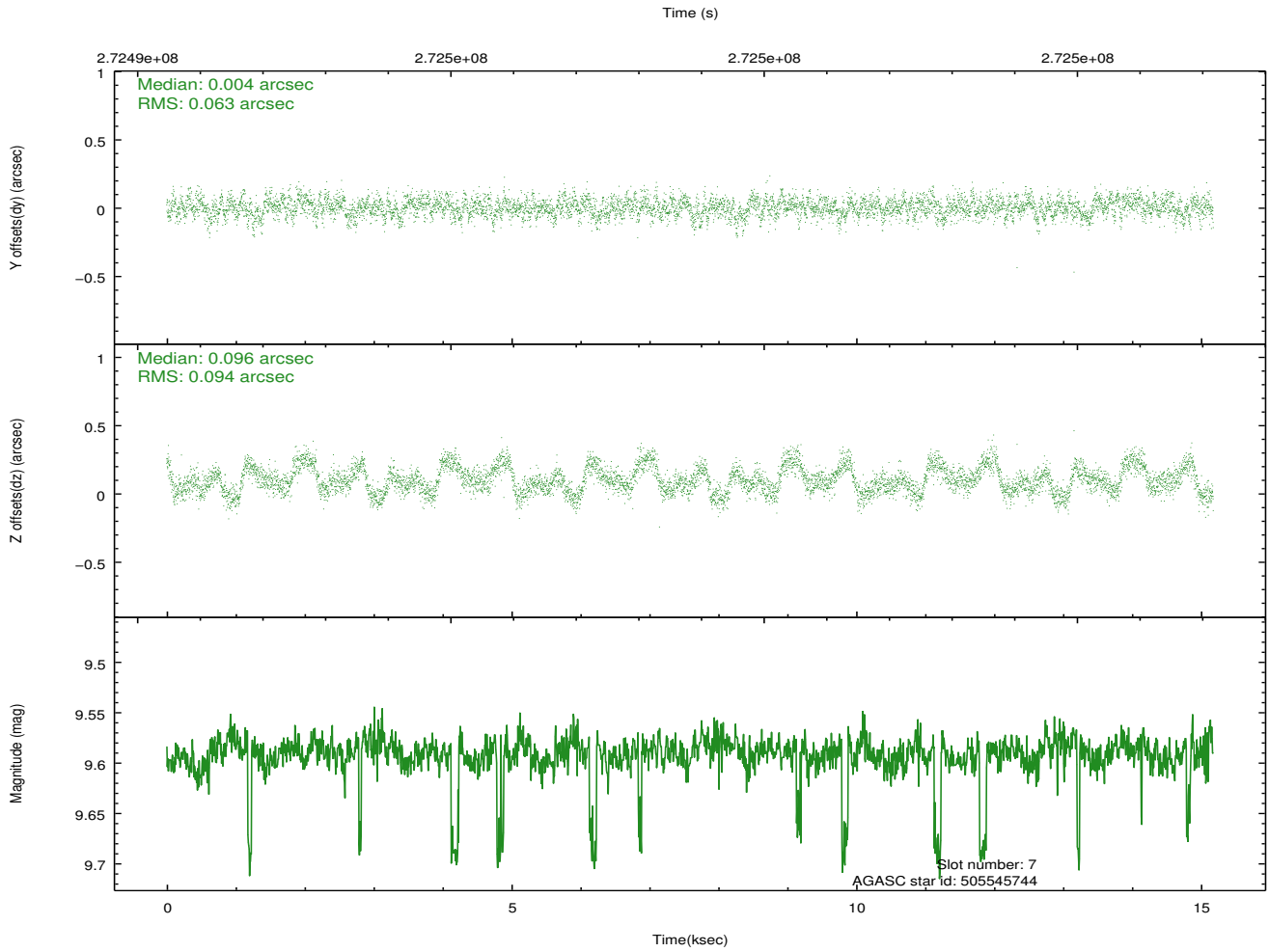
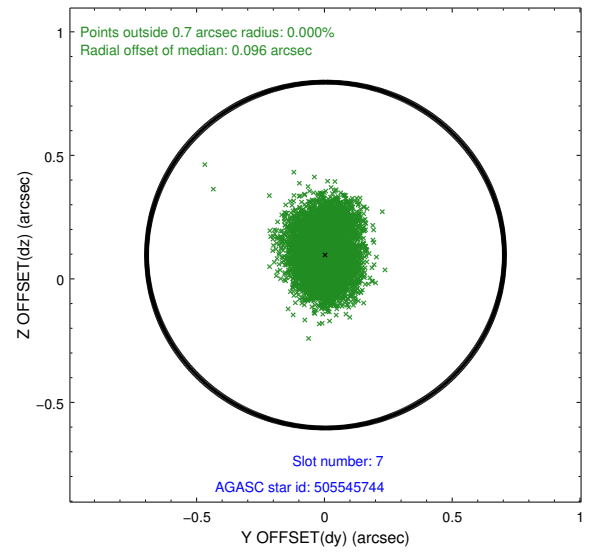
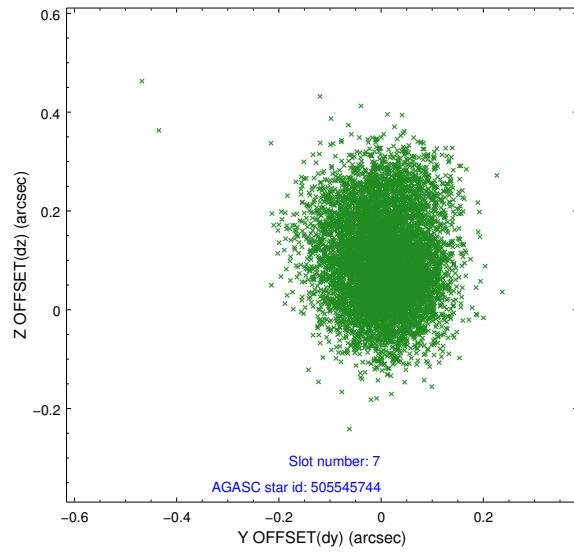
### 2.4.3 Slot 5



## 2.4.4 Slot 6

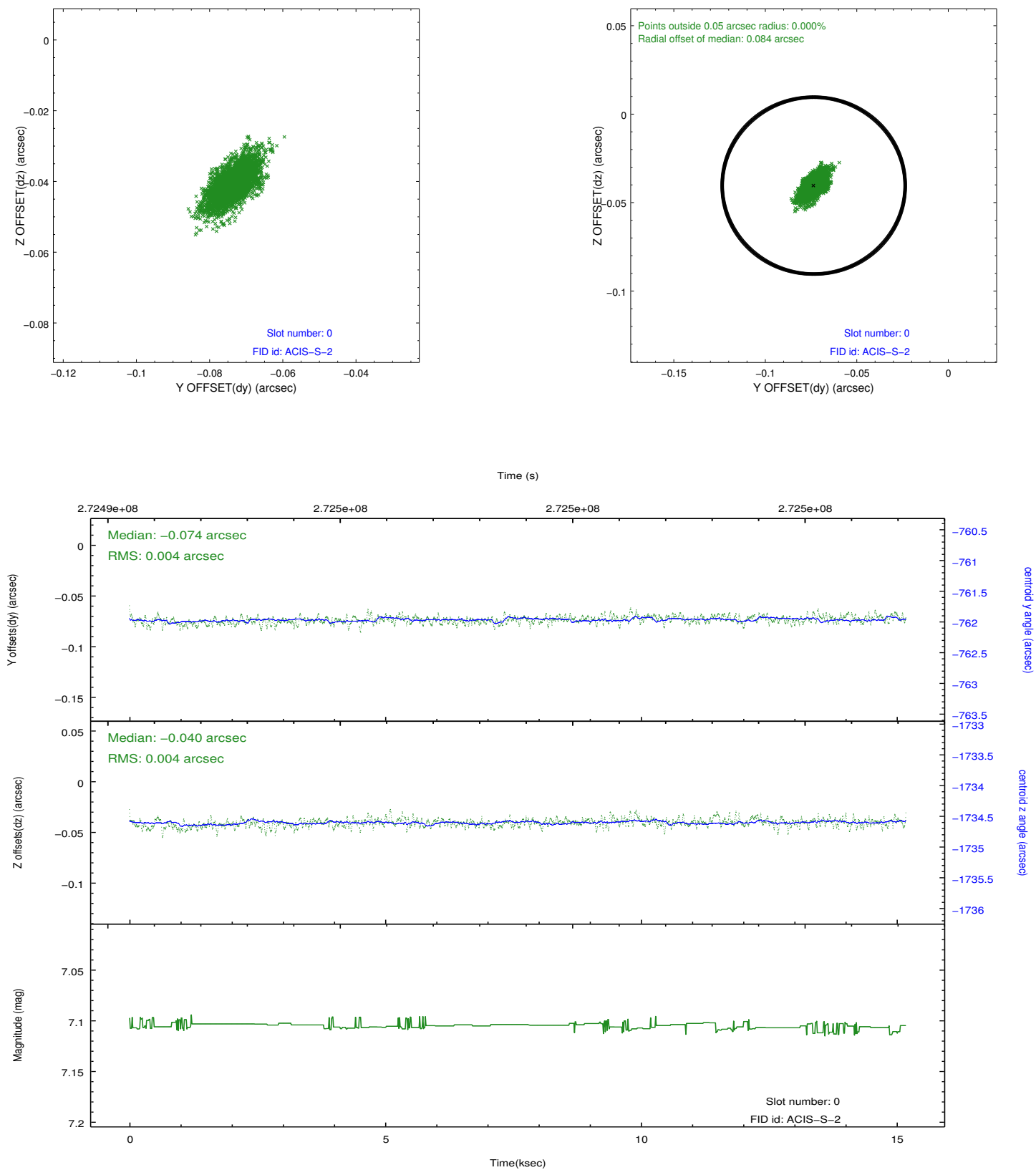


## 2.4.5 Slot 7

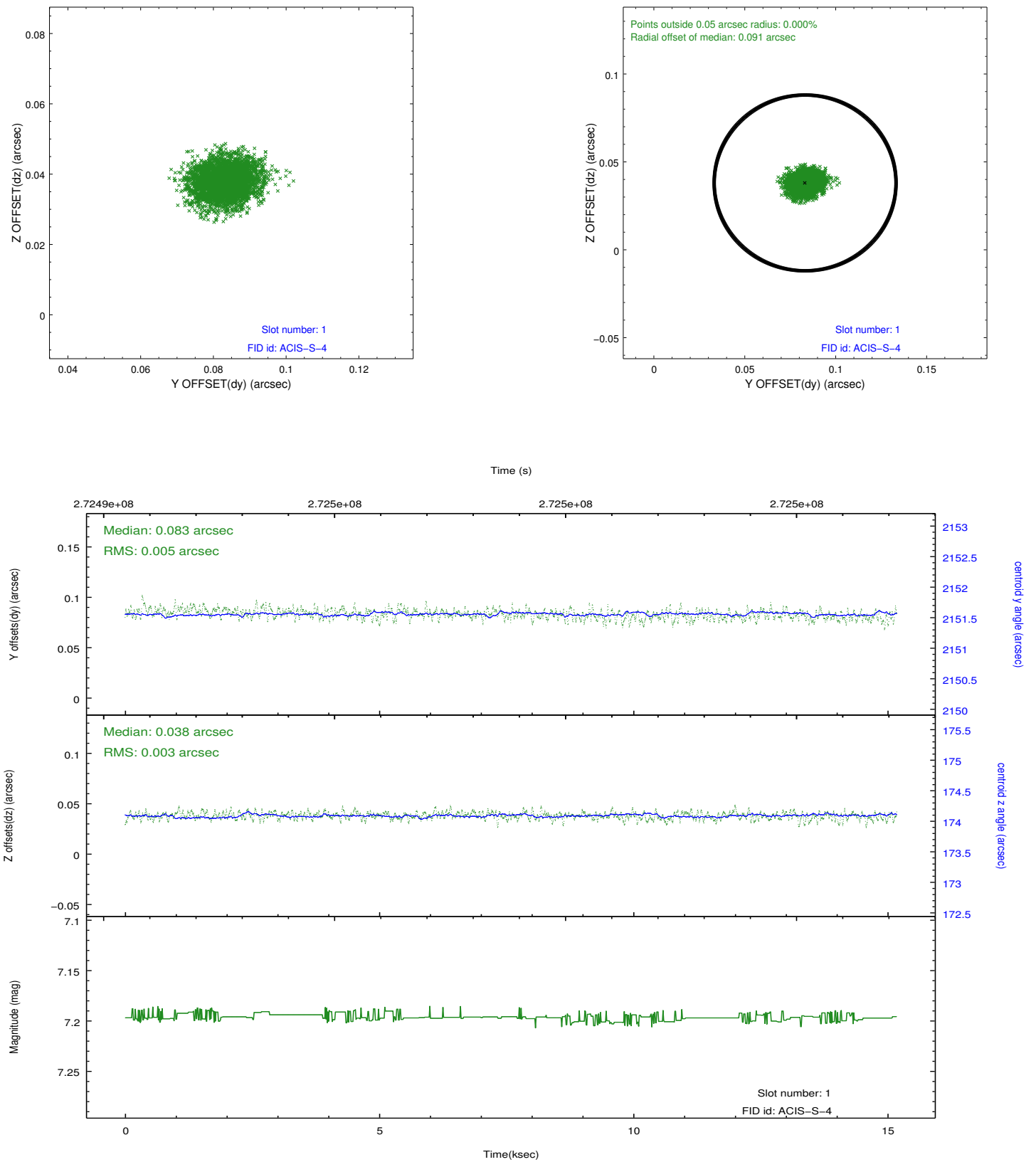


## 2.5 FID Slots

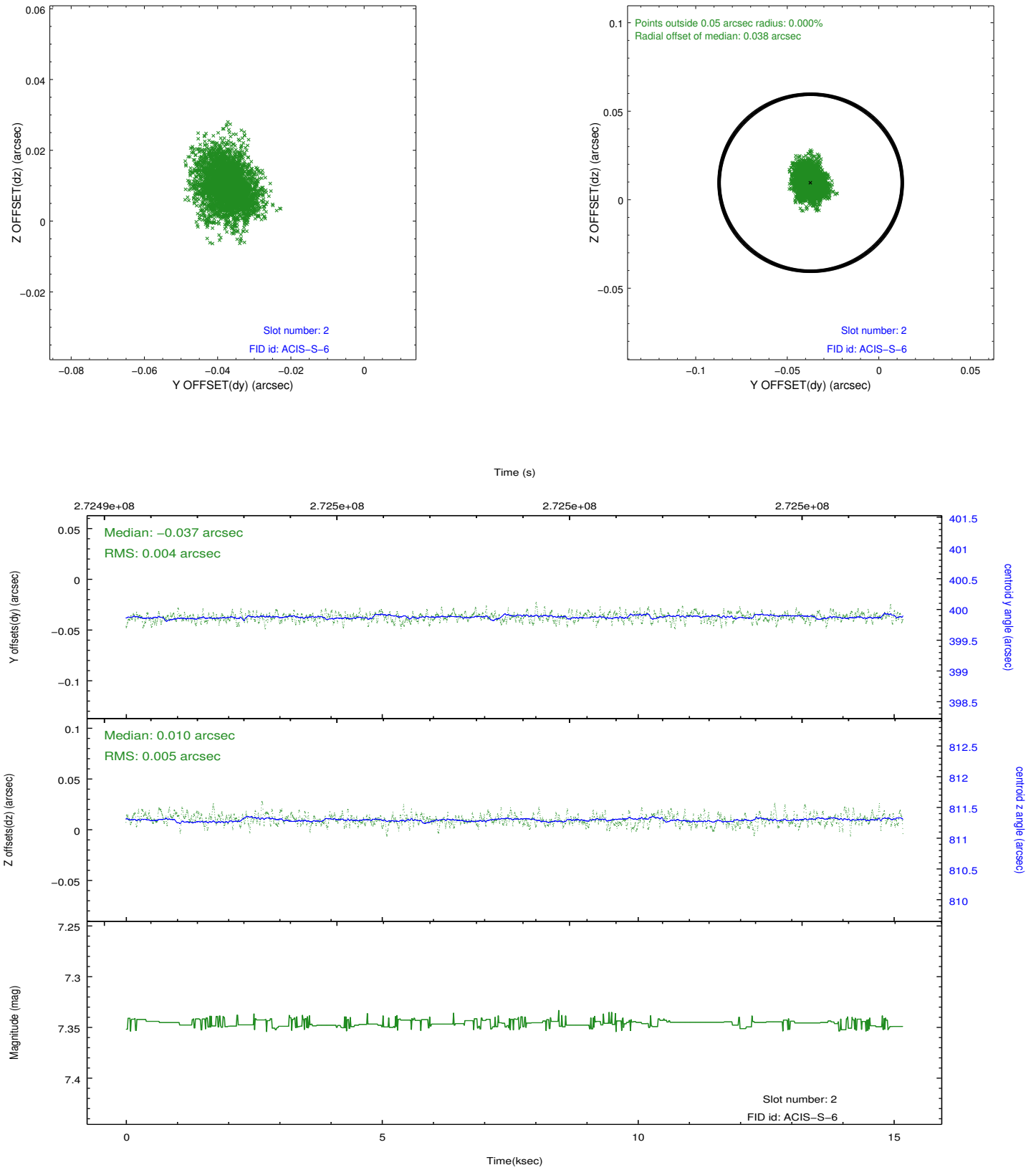
### 2.5.1 Slot 0



## 2.5.2 Slot 1



### 2.5.3 Slot 2



## A Summary

### A.1 Status

V&V Scientist	Jen Lauer
V&V Date (YYYY-MM-DD)	2012.04.08
V&V Edition	1
V&V Disposition and Status	OK
V&V Charge Time	15.179599

### A.2 Comments