

V&V Reference Report

L2 ASCDS Version : 8.4.3.1

Observation 6637 - L2 Version 2
Chandra X-Ray Center

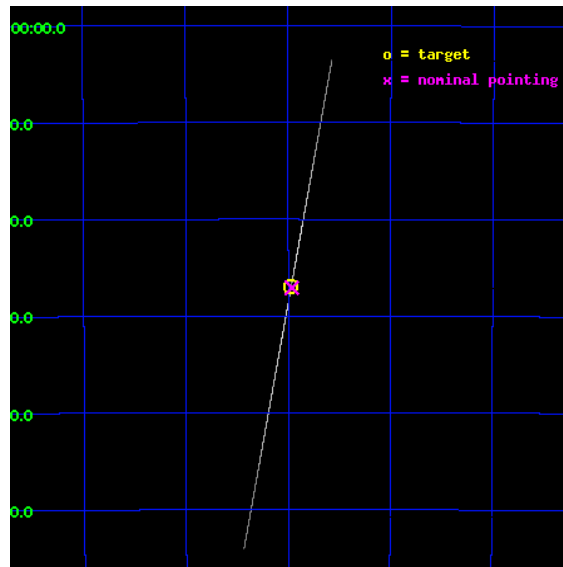
L2 Processing Date : Apr 7 2012

Contents

1	Front	2
2	OBI	3
2.1	OBI	3
2.1.1	Images	3
2.1.2	Parameters	4
2.1.3	Events	4
2.2	Compared Parameters	5
2.3	Aspect	6
2.4	Star Slots	9
2.4.1	Slot 3	9
2.4.2	Slot 4	10
2.4.3	Slot 5	11
2.4.4	Slot 6	12
2.4.5	Slot 7	13
2.5	FID Slots	14
2.5.1	Slot 0	14
2.5.2	Slot 1	15
2.5.3	Slot 2	16
3	Gratings	17
3.1	HEG Arm	17
3.2	MEG Arm	19
A	Summary	21
A.1	Status	21
A.2	Comments	21

1 Front

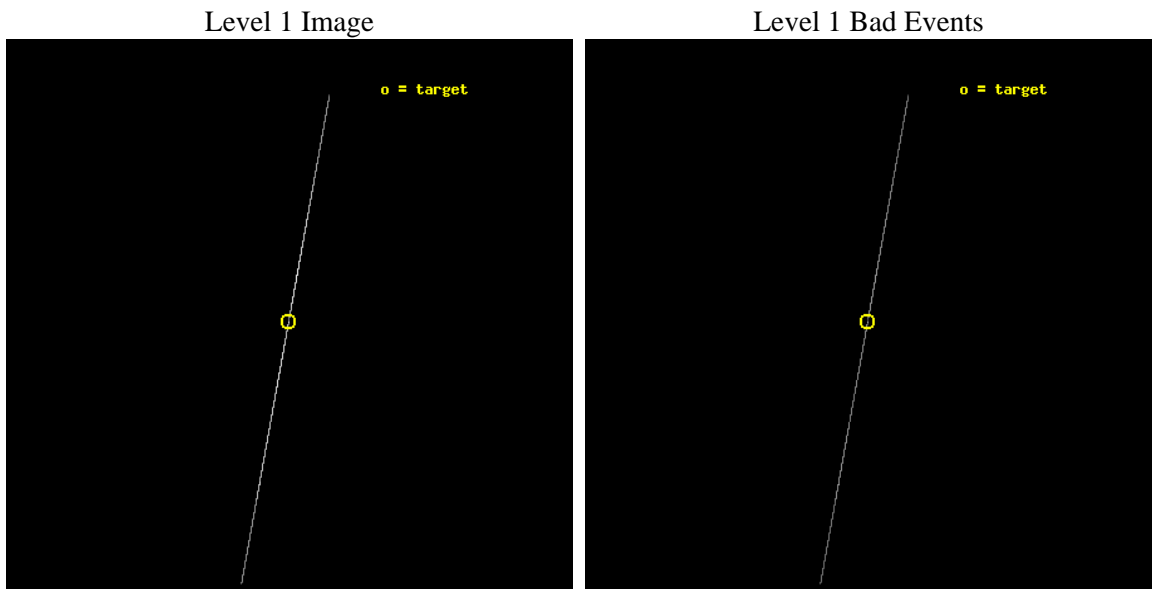
seq_num	400542	Sequence number
obs_id	6637	Observation id
title	CHAZSS: The Chandra HETGS Atoll/Z Spectroscopic Survey	Proposal ti
observer	Dr Jon Miller	Principal investigator
object	4U 1735-44	Source name
ra_targ	264.742917	Observer's specified target RA [deg]
dec_targ	-44.45	Observer's specified target Dec [deg]
ra_nom	264.74091748016	Nominal RA [deg]
dec_nom	-44.451529366849	Nominal Dec [deg]
roll_nom	280.28555746759	Nominal Roll [deg]
revision	2	Processing version of data
ontime	24181.0	Sum of GTIs [s]
livetime	24086.54296875	Livetime [s]
ontime4	24181.0	Sum of GTIs [s]
ontime5	24181.0	Sum of GTIs [s]
ontime6	24181.0	Sum of GTIs [s]
ontime7	24181.0	Sum of GTIs [s]
ontime8	24181.0	Sum of GTIs [s]
ontime9	24181.0	Sum of GTIs [s]
l2events	2484099	Number of level 2 events



2 OBI

2.1 OBI

2.1.1 Images



2.1.2 Parameters

obi_num	0	Obi number	sched_exp_time	24000.000000	[s] Scheduled observation exposure time
ascdsver	8.4.3.1	Processing system revision	ontime	24181.0	Sum of GTIs [s]
caldsver	4.4.9	 	ontime4	24181.0	Sum of GTIs [s]
date	2012-04-07T11:09:55	Date and time of file creation	ontime5	24181.0	Sum of GTIs [s]
revision	2	Processing version of data	ontime6	24181.0	Sum of GTIs [s]
			ontime7	24181.0	Sum of GTIs [s]
			ontime8	24181.0	Sum of GTIs [s]
			ontime9	24181.0	Sum of GTIs [s]
			l1events	2886157	Number of level 1 events

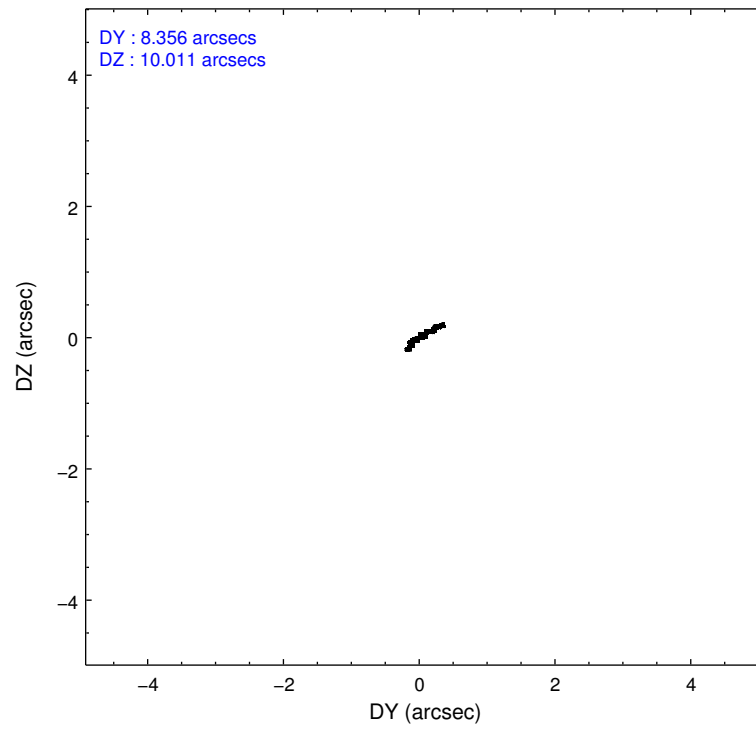
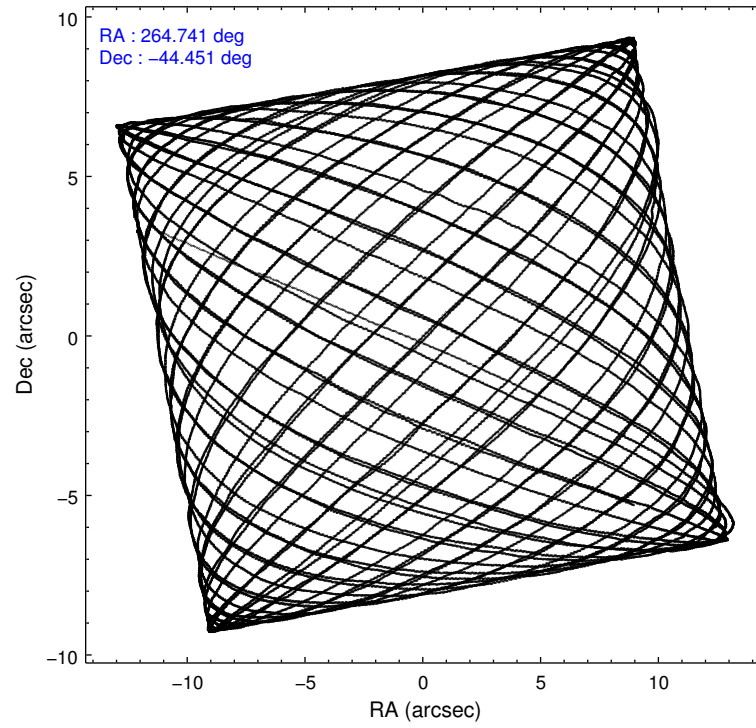
2.1.3 Events

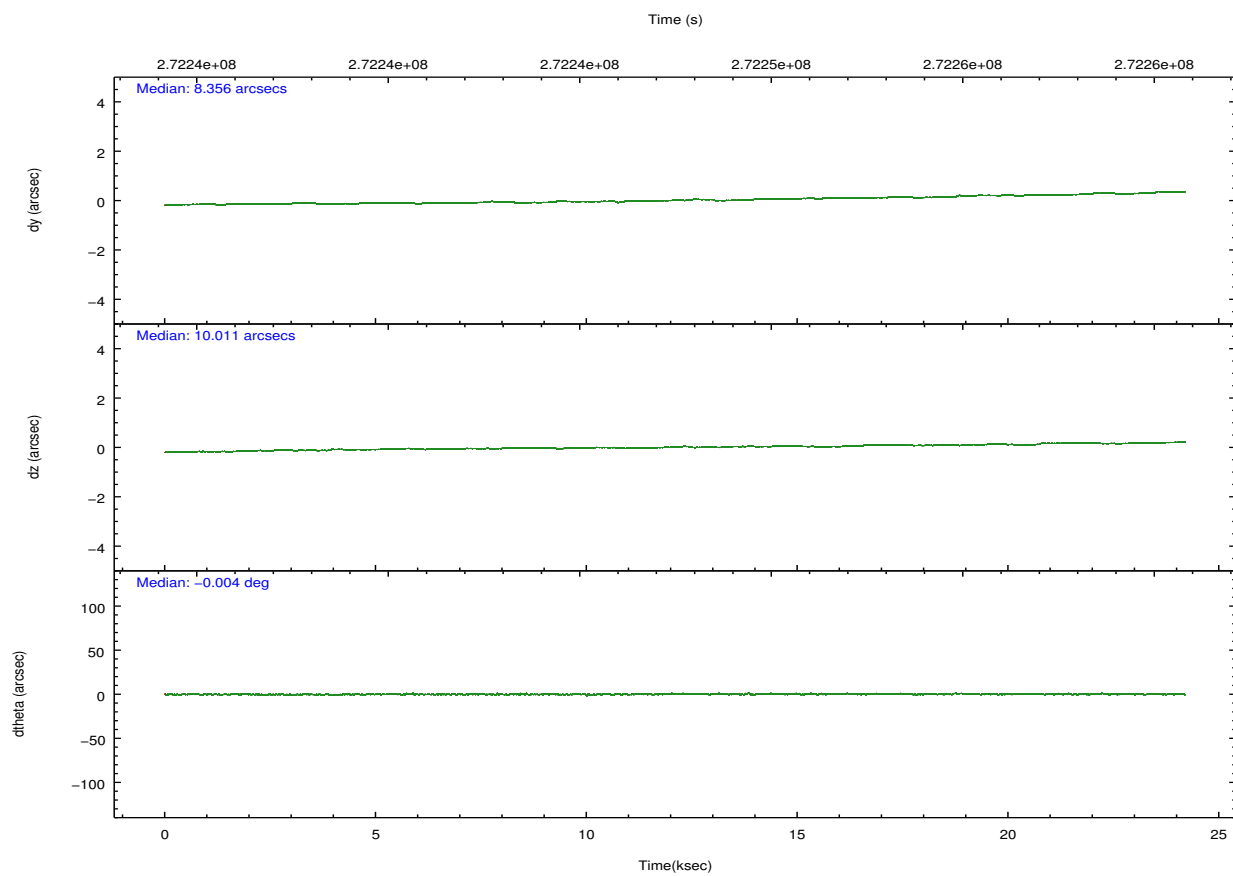
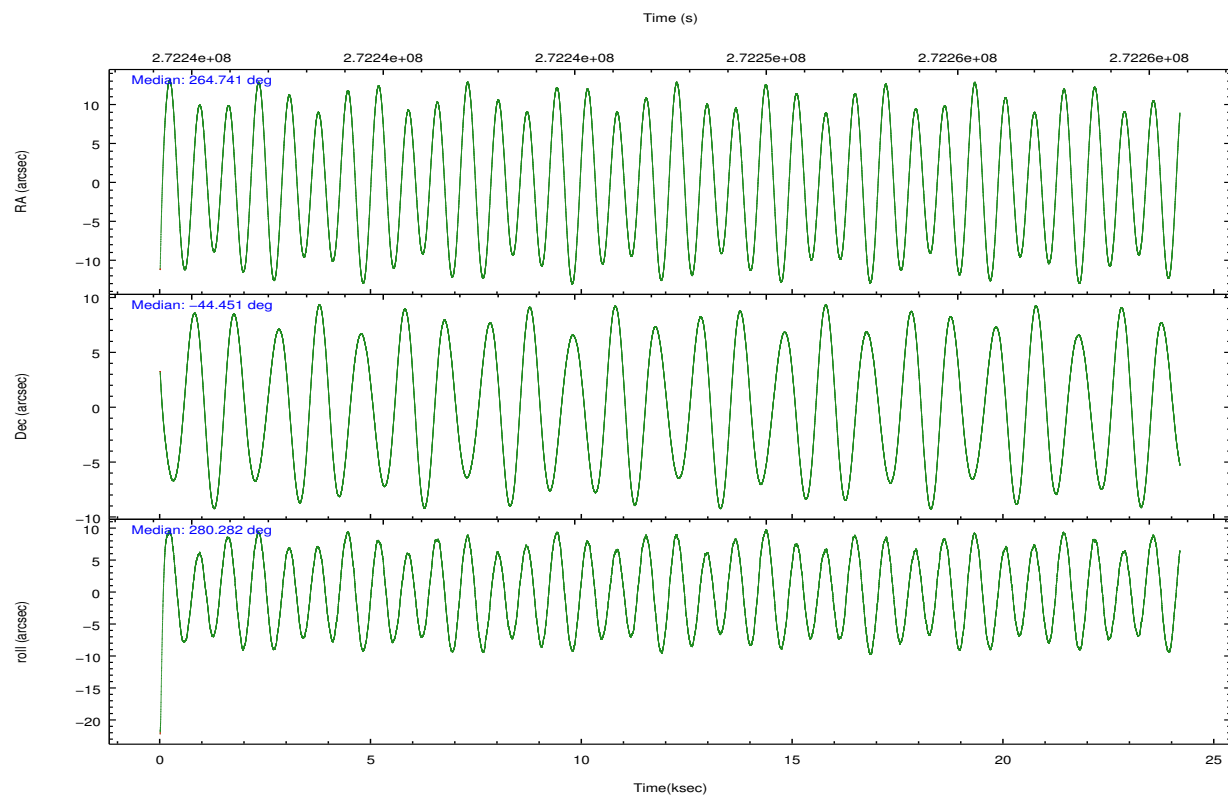
	ccd 4	ccd 5	ccd 6	ccd 7	ccd 8	ccd 9		ccd 4	ccd 5	ccd 6	ccd 7	ccd 8	ccd 9
level 1 events	75087	429954	856793	985394	442698	96231	grade 0 events	5747	97625	293751	167293	248626	11554
rejected events	10621	30641	20839	42125	24049	13791		7%	22%	34%	16%	56%	12%
rejected %	14%	7%	2%	4%	5%	14%	grade 1 events	183	289	802	1181	906	185
								0%	0%	0%	0%	0%	0%
							grade 2 events	38781	143706	446515	283042	110151	50281
								51%	33%	52%	28%	24%	52%
							grade 3 events	5476	14441	17685	84338	18157	5022
								7%	3%	2%	8%	4%	5%
							grade 4 events	5503	14059	17591	84020	18020	5456
								7%	3%	2%	8%	4%	5%
							grade 5 events	8560	20476	13362	28395	14536	10145
								11%	4%	1%	2%	3%	10%
							grade 6 events	10837	139358	67087	337125	32302	13588
								14%	32%	7%	34%	7%	14%
							grade 7 events	0	0	0	0	0	0
								0%	0%	0%	0%	0%	0%

2.2 Compared Parameters

Parameter	Planned	Actual	Parameter	Planned	Actual
Instrument	ACIS	ACIS	Obspar format version number	7	7
Detector	ACIS-456789	ACIS-456789	Obspar file type	PREDICTED	ACTUAL
Grating	HETG	HETG	Obspar update status	NONE	UPDATED
Data mode	CC33_GRADED	CC33_GRADED	Number of optional ACIS chips dropped	0	0
Observation mode	POINTING	POINTING	On-chip summing requested	N	N
[deg] Pointing RA	264.715851	264.7409174801605	Subarray requested	NONE	NONE
[deg] Pointing Dec	-44.430977	-44.45152936684875	Alternating exposures requested	N	N
[deg] Pointing Roll	280.111385	280.285557467585	[s] Primary exposure time	0.000000	0
[mm] SIM focus pos	-0.684267	-0.6828225247311905			
[mm] SIM defocus	0	0.001444936568705701			
[mm] SIM translation stage pos	-182.632523	-182.6398635053184			
[mm] SIM translation stage offset	-7.5	-7.49265907768941			
[s] Observation start time (MET)	272235590.184000	272234361.62537			
Observation start date	2006-08-17T20:58:45	2006-08-17T20:39:21			
[s] Observation end time (MET)	272259590.184000	272260210.58908			
Observation end date	2006-08-18T03:38:45	2006-08-18T03:50:10			
Read mode	CONTINUOUS	CONTINUOUS			

2.3 Aspect



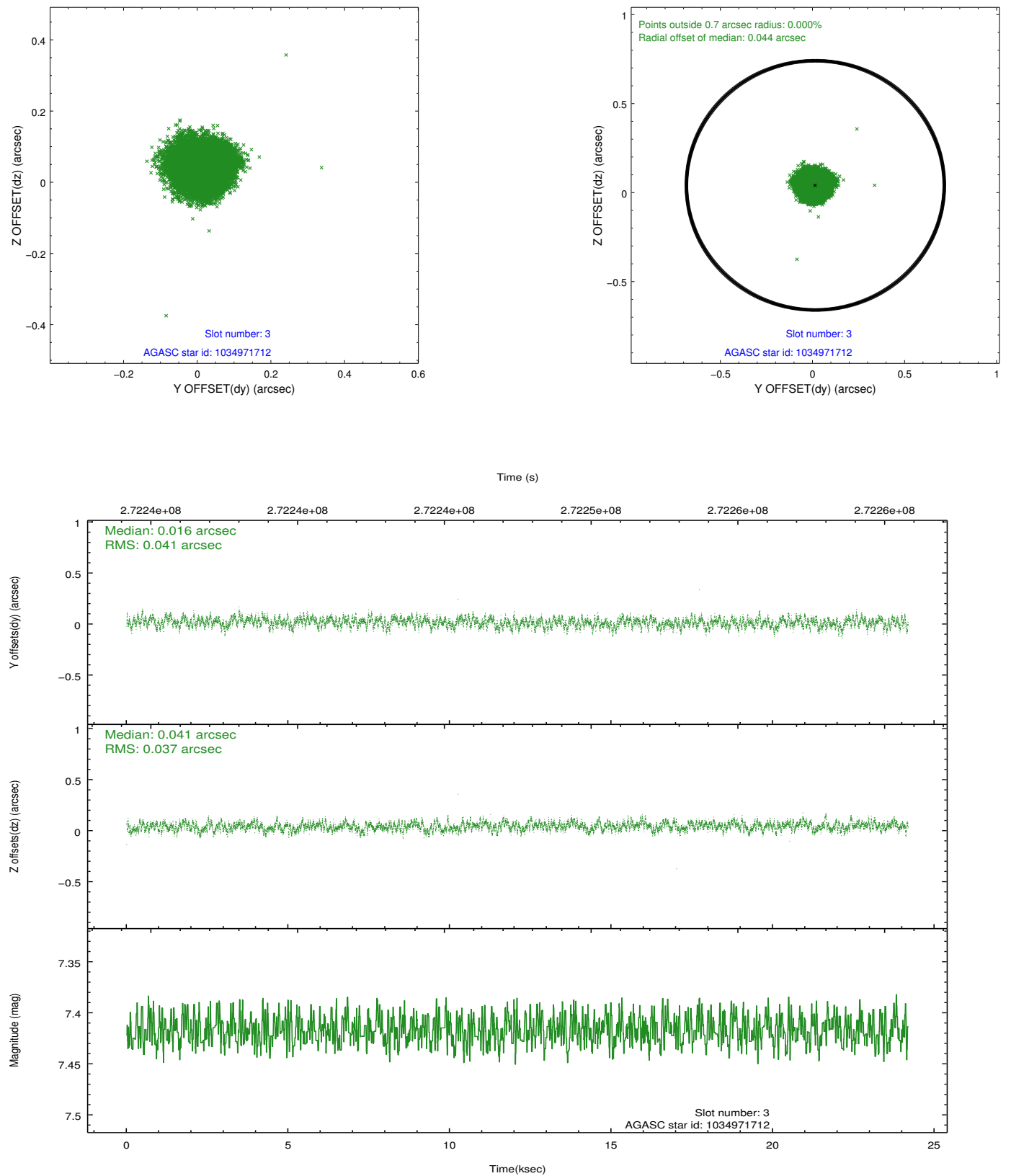


Slot Statistics

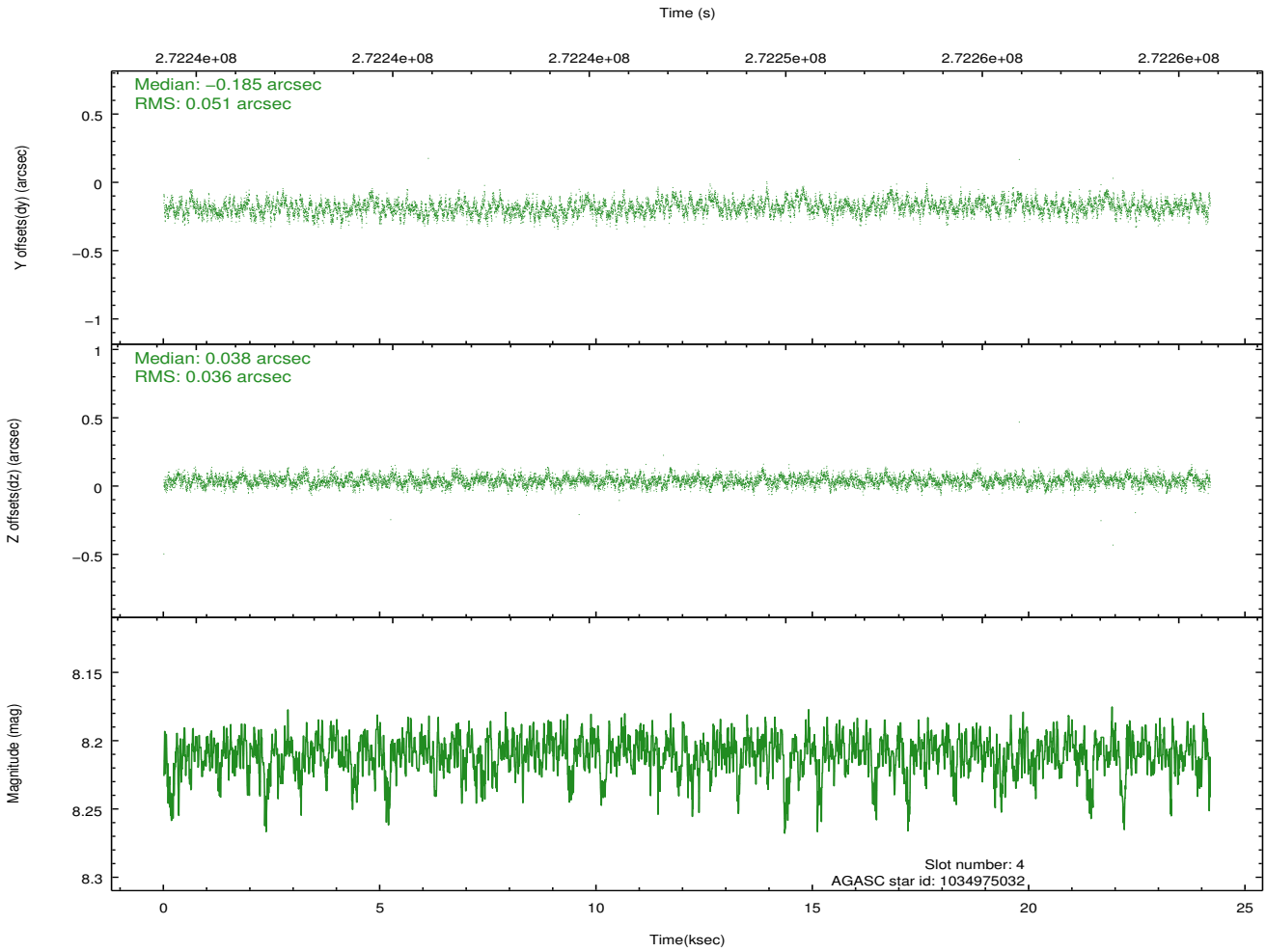
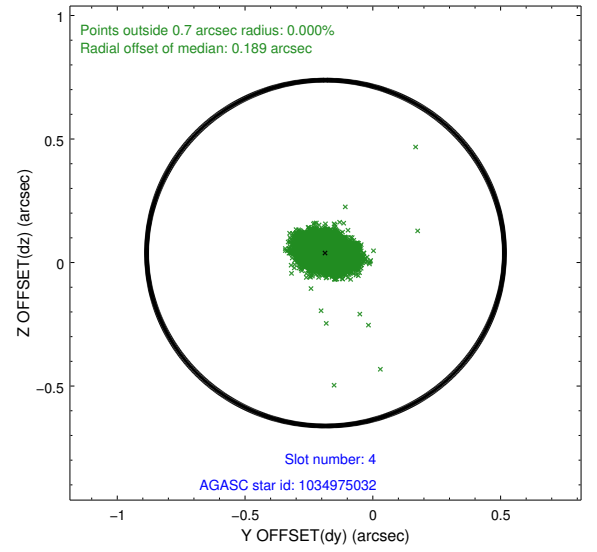
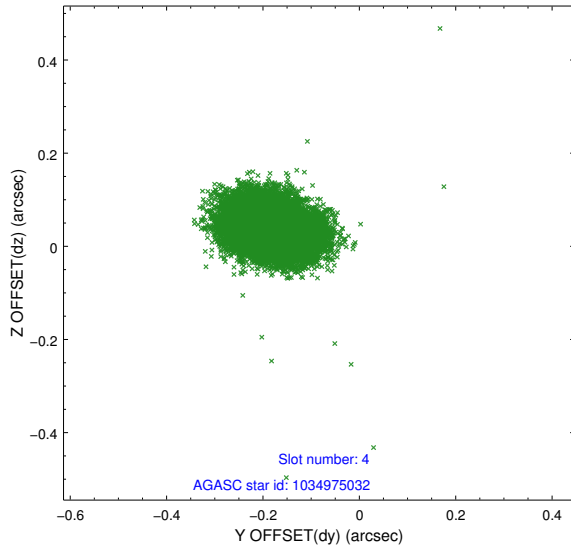
slot	status	id	mag	n_pts	med_dy	med_dz	dr1	dr2	ra	dec	mean_y	mean_z
0	FID	ACIS-S-2	7.08	5899	-0.121	-0.078	0.014	0.019	0.000000	0.000000	-760.77	-1885.72
1	FID	ACIS-S-4	7.18	5900	0.114	0.072	0.009	0.015	0.000000	0.000000	2152.69	22.74
2	FID	ACIS-S-6	7.41	5899	-0.020	0.014	0.010	0.015	0.000000	0.000000	401.49	660.23
3	GUIDE	1034971712	7.42	11797	0.016	0.041	0.060	0.094	264.626982	-44.875616	1536.36	-504.04
4	GUIDE	1034975032	8.21	11797	-0.185	0.038	0.065	0.106	264.889634	-43.859068	-1947.13	805.48
5	GUIDE	1035076896	8.19	11799	0.171	0.023	0.064	0.102	265.475145	-44.783905	1600.39	1685.63
6	GUIDE	1035079304	7.83	11796	-0.191	0.064	0.051	0.084	265.287192	-43.791891	-1999.29	1864.93
7	GUIDE	1093415704	8.70	11790	0.184	-0.161	0.096	0.151	264.307658	-45.157399	2395.43	-1479.58

2.4 Star Slots

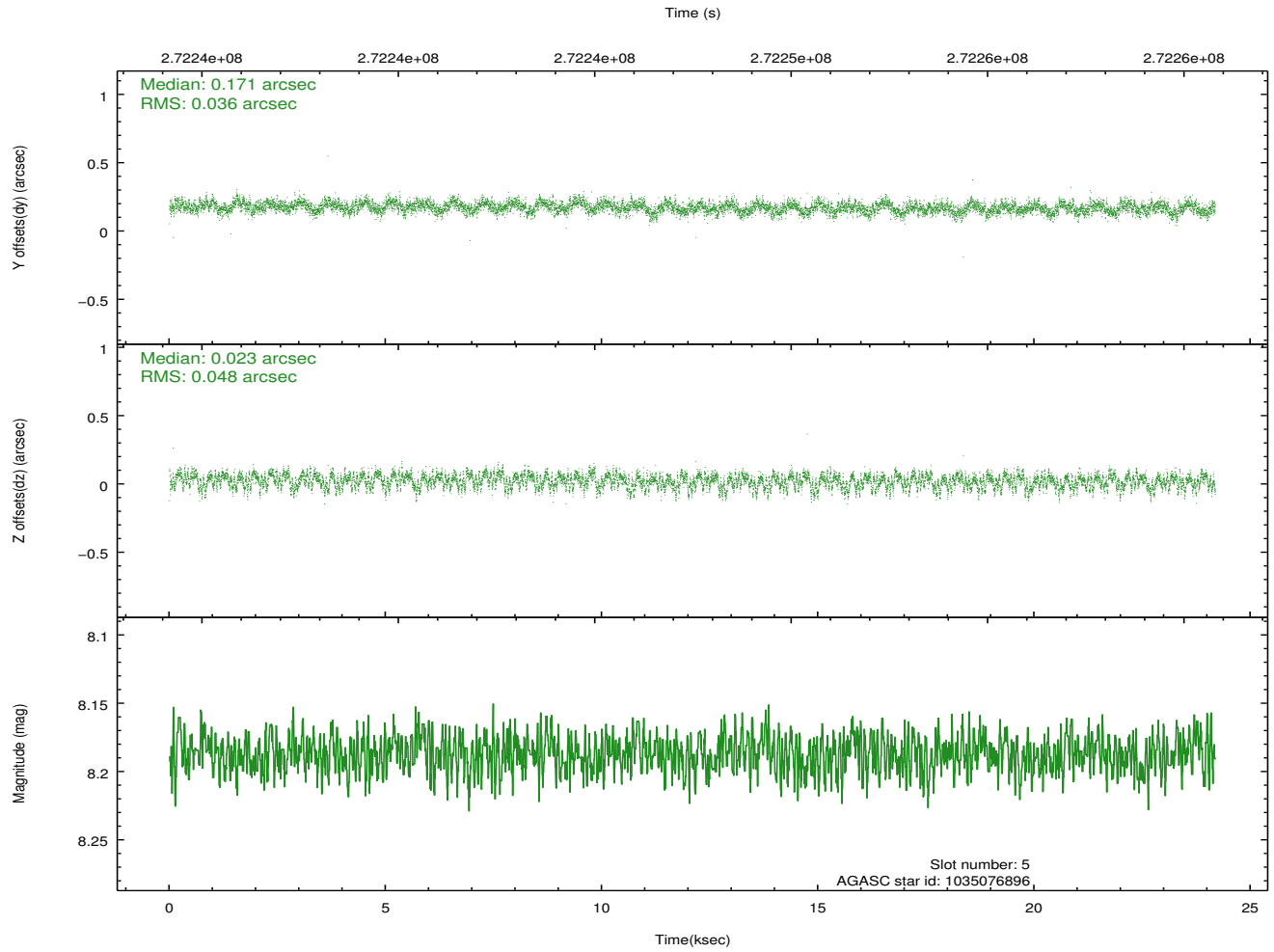
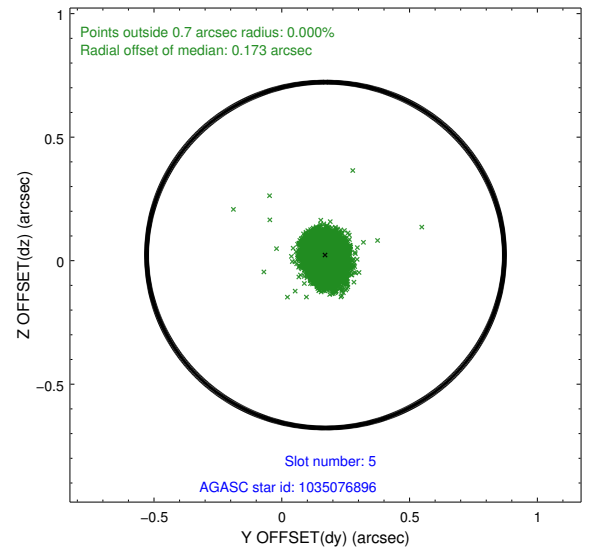
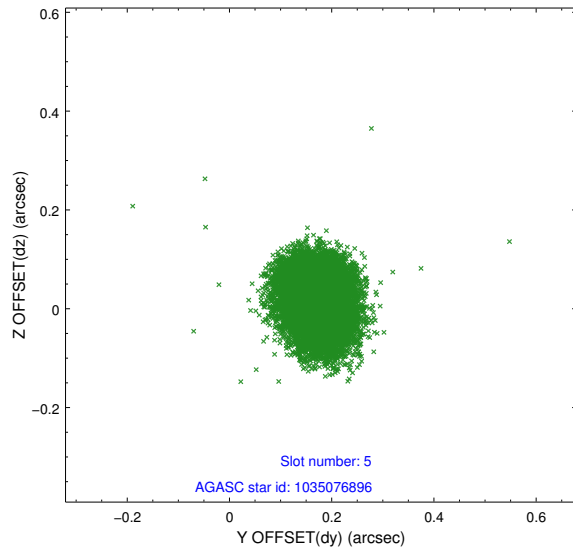
2.4.1 Slot 3



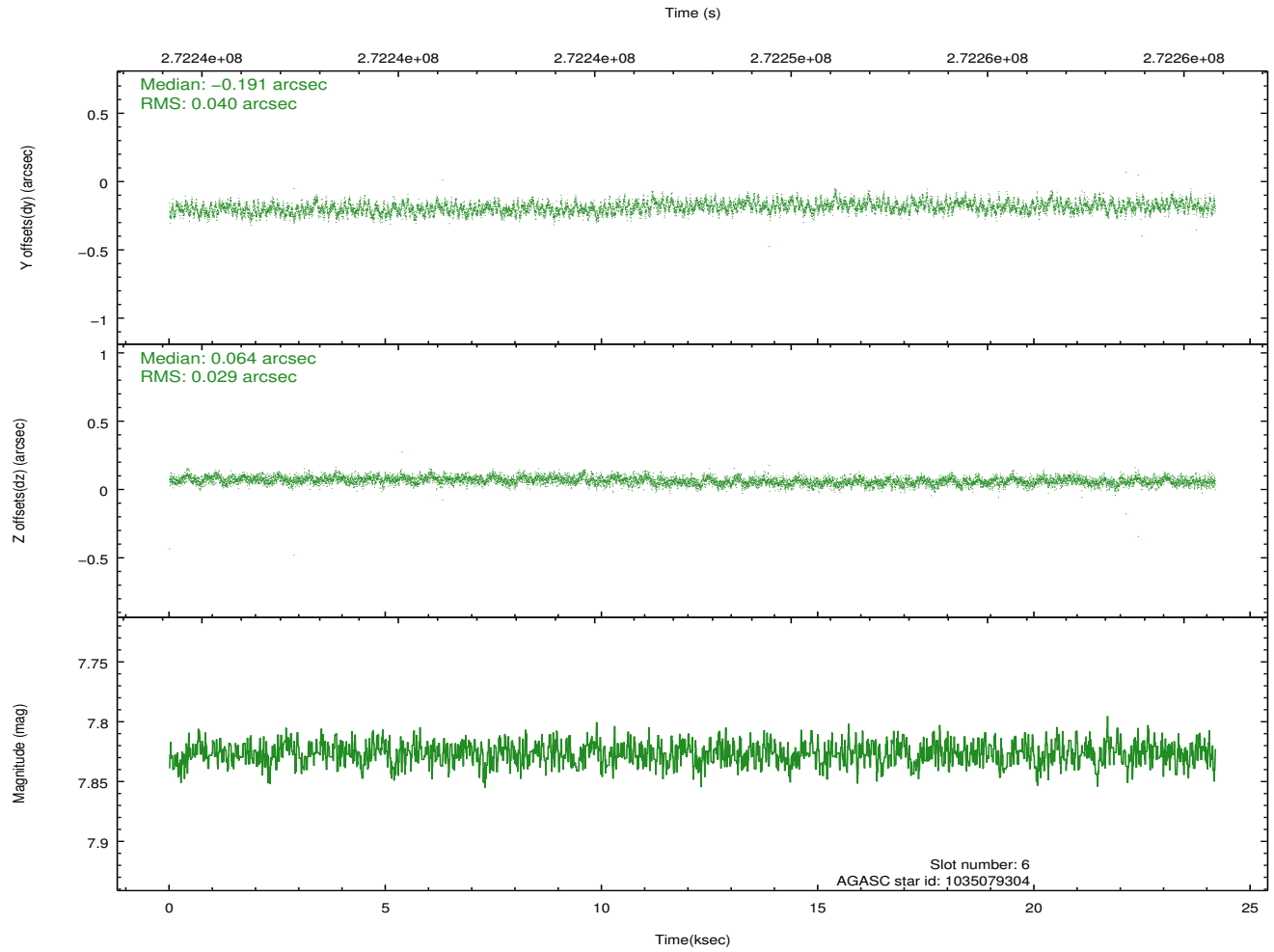
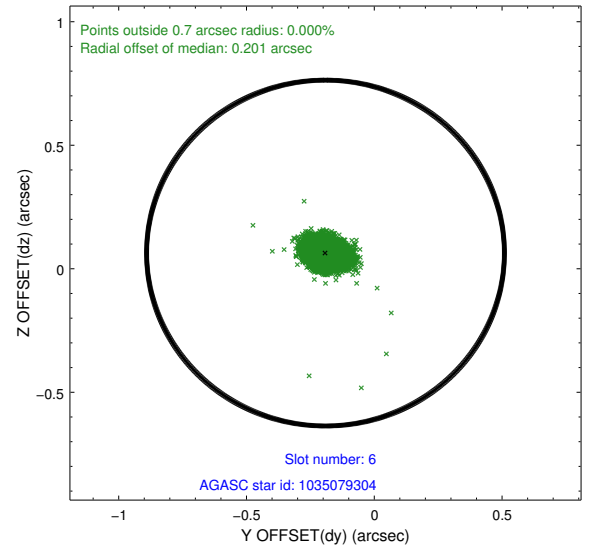
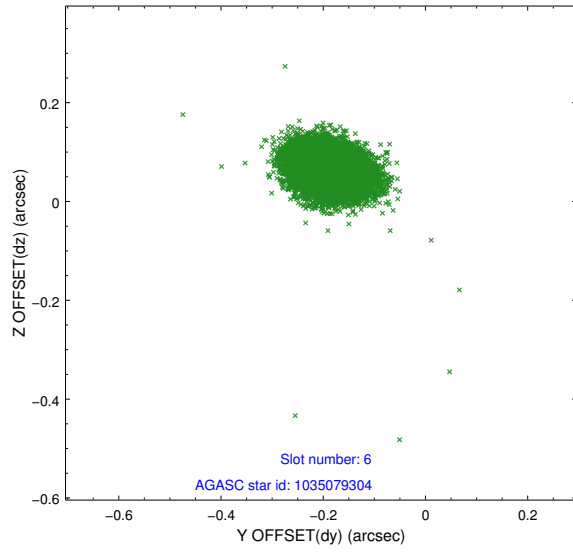
2.4.2 Slot 4



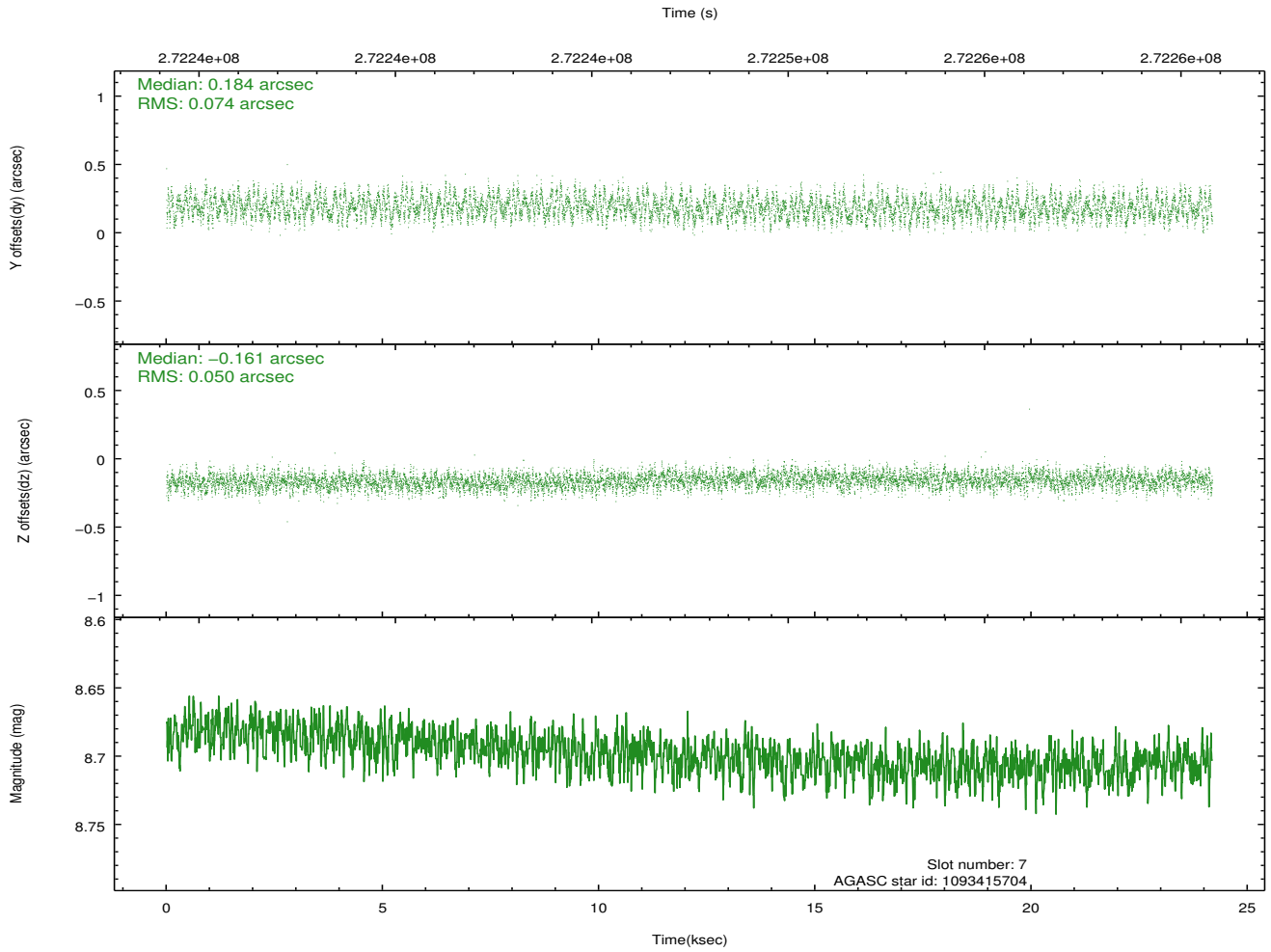
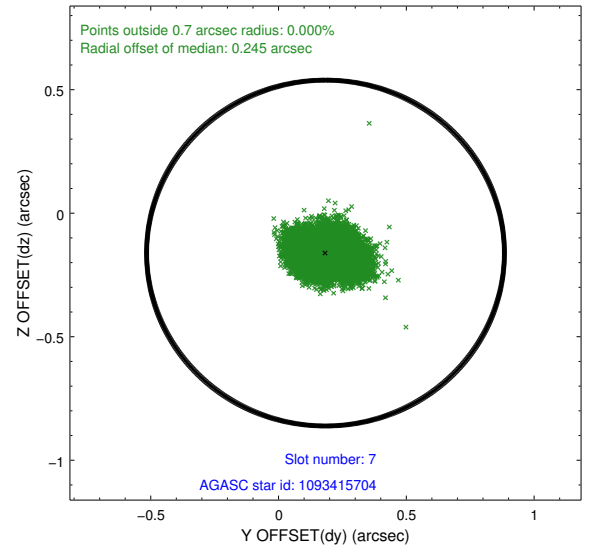
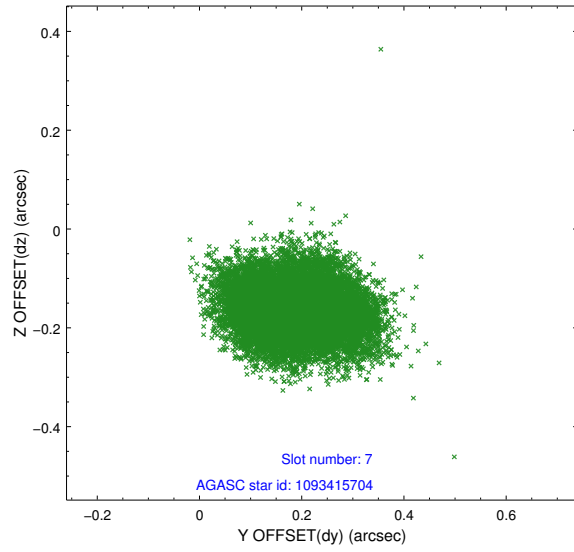
2.4.3 Slot 5



2.4.4 Slot 6

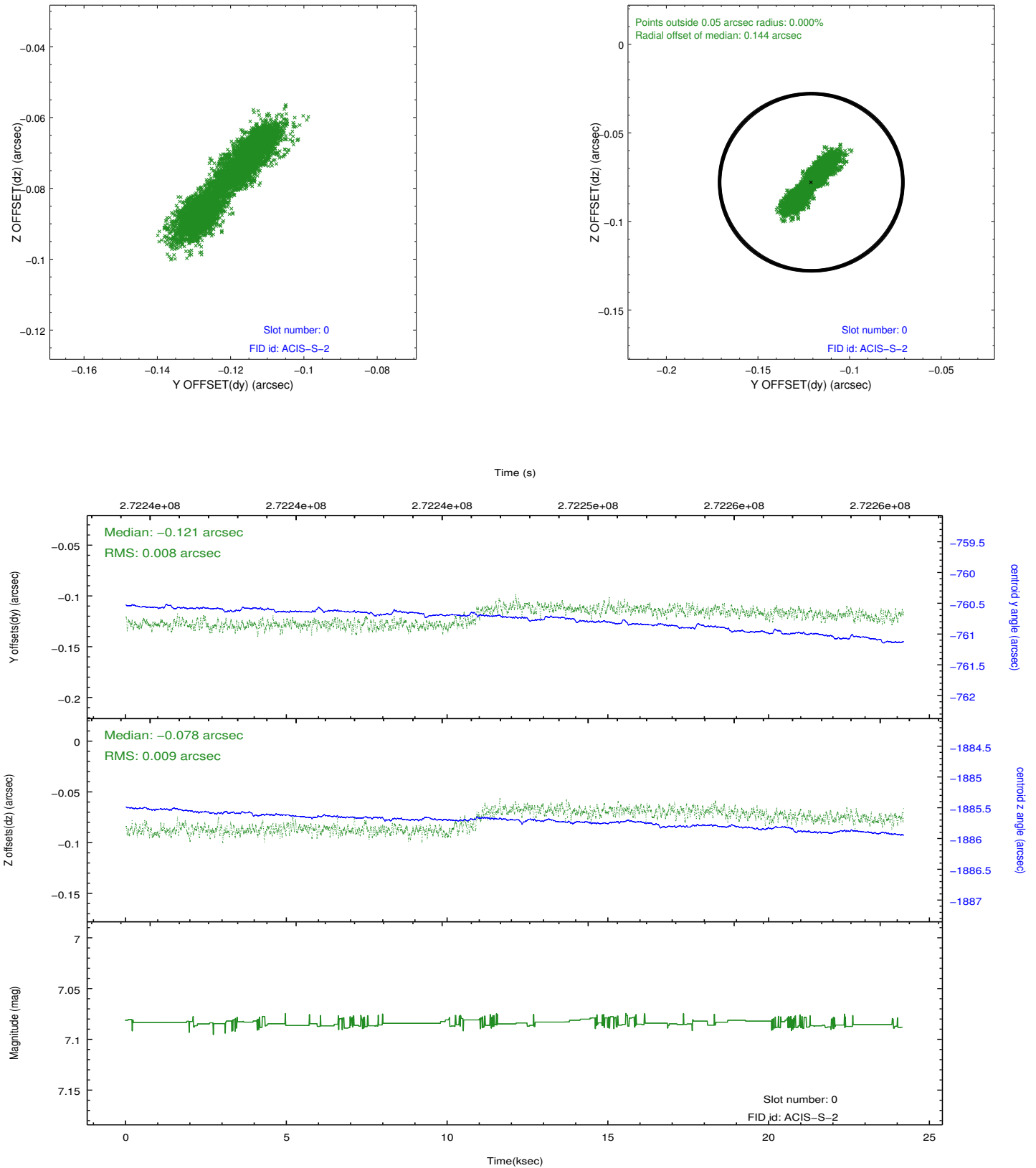


2.4.5 Slot 7

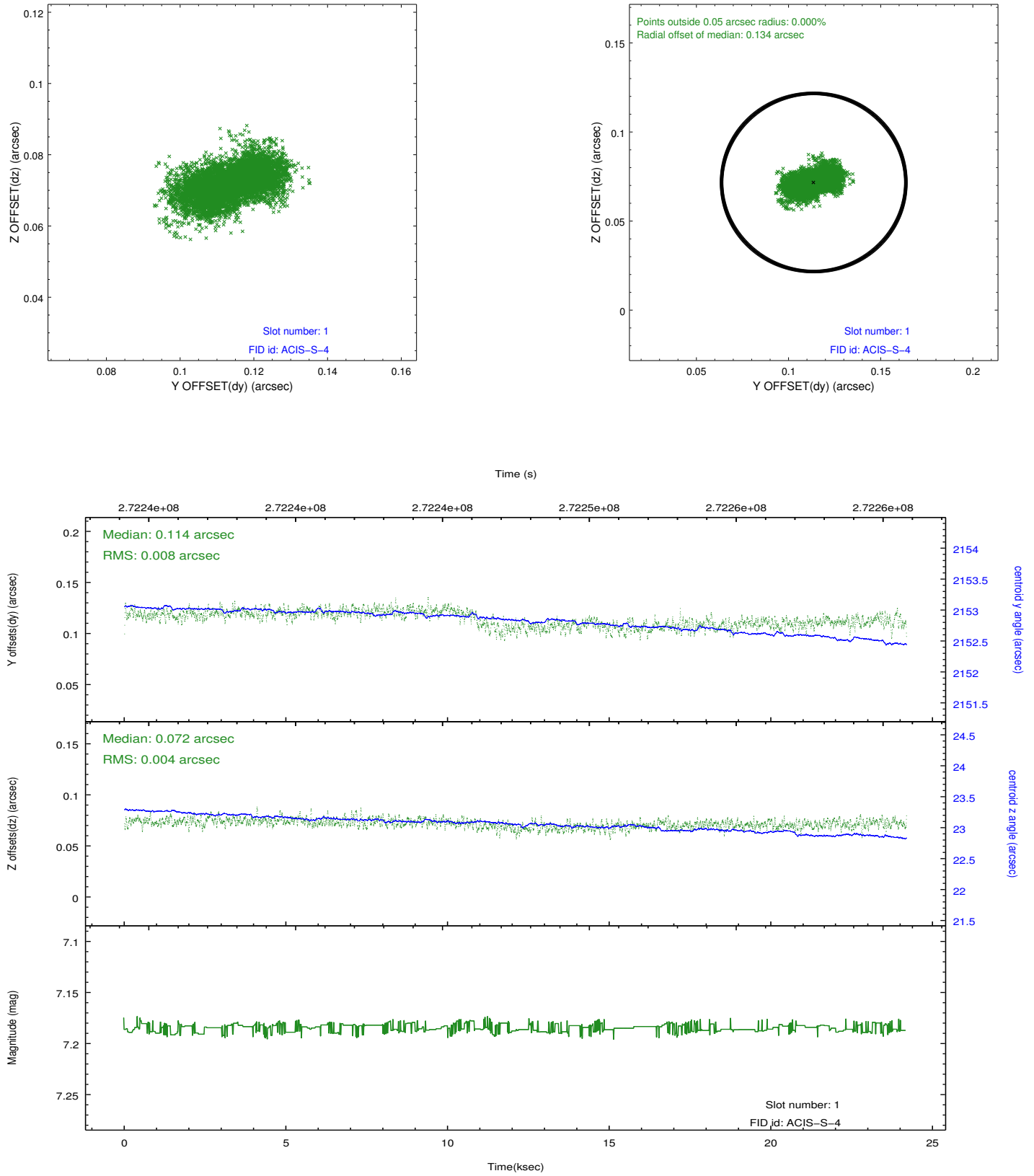


2.5 FID Slots

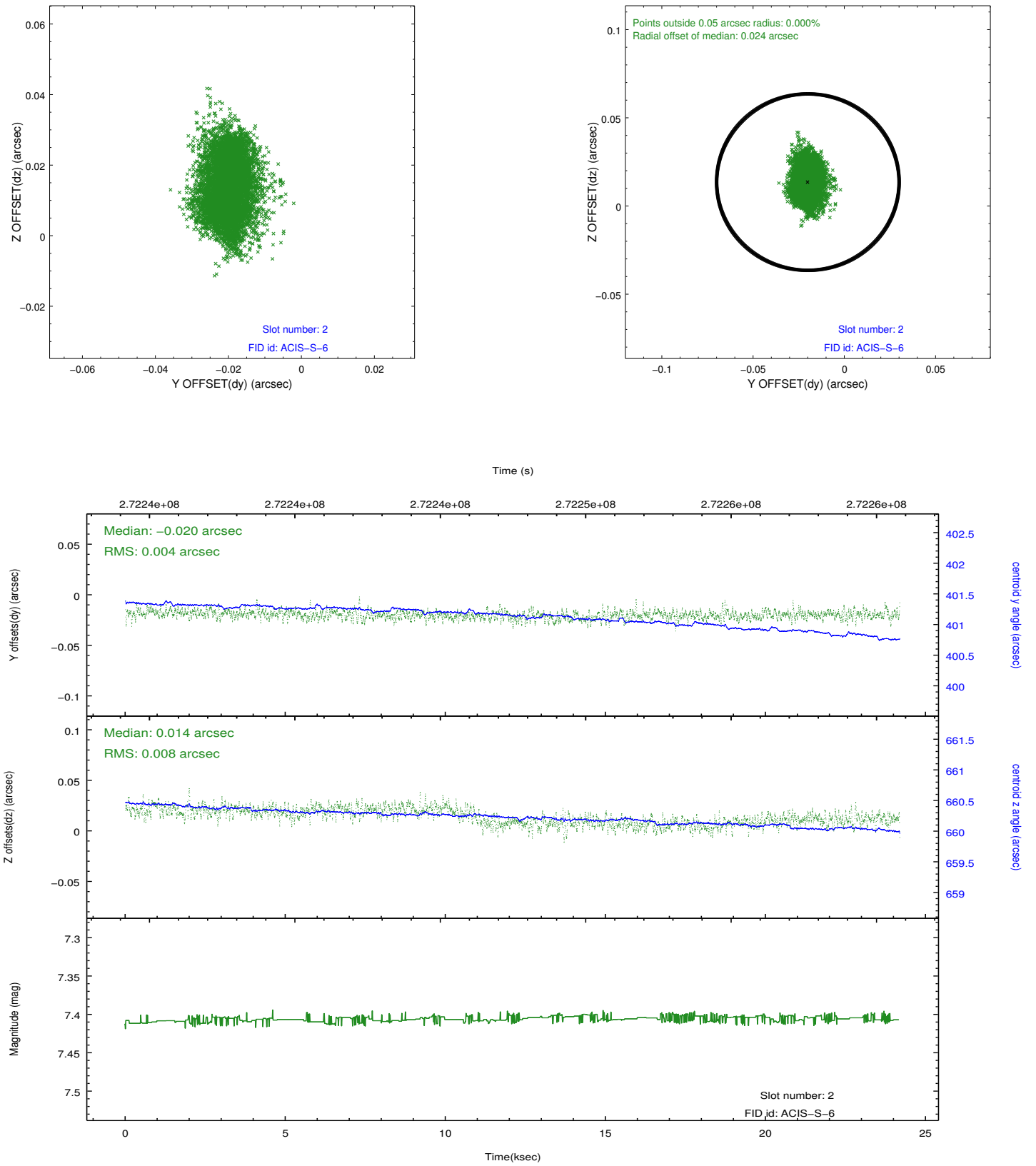
2.5.1 Slot 0



2.5.2 Slot 1

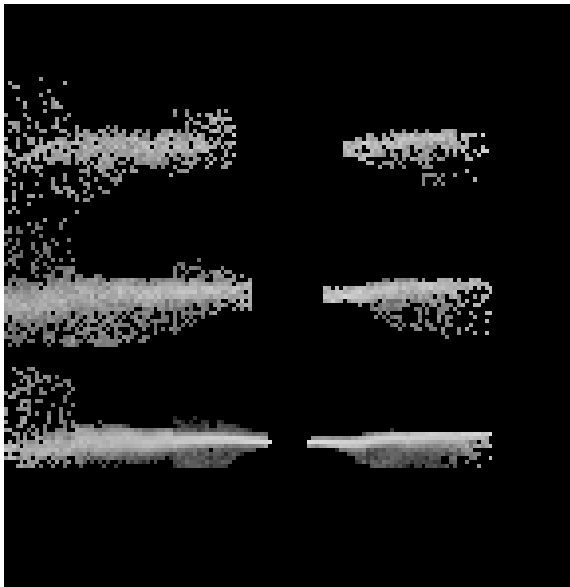


2.5.3 Slot 2

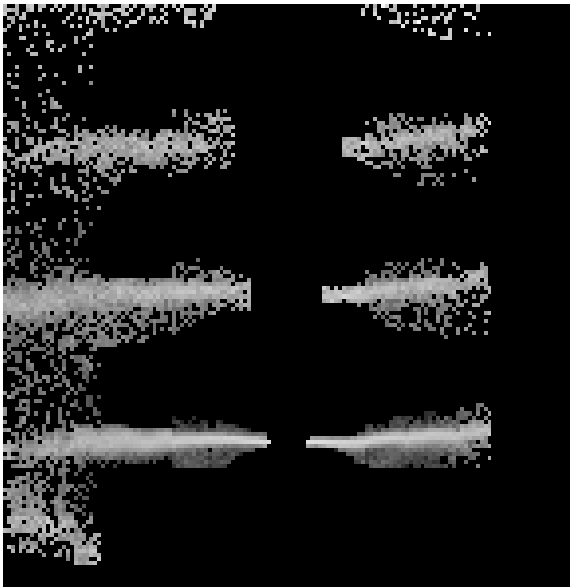


3 Gratings

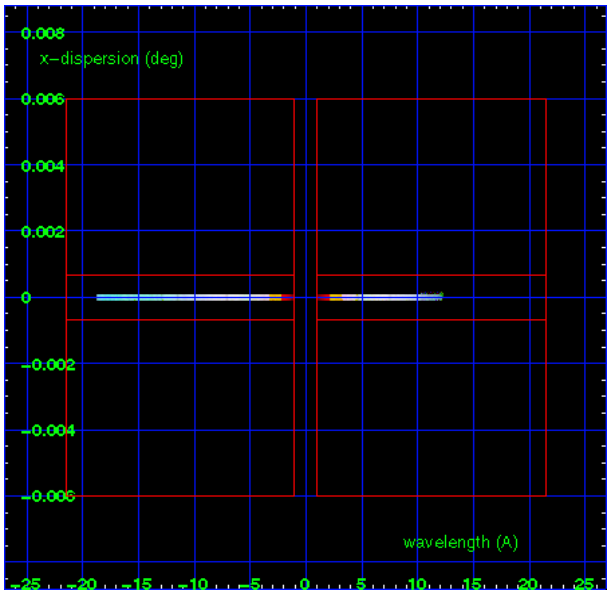
3.1 HEG Arm



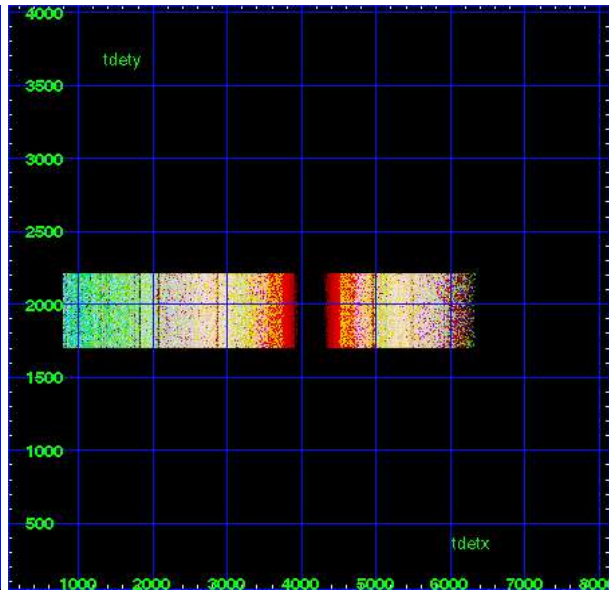
HEG Order Sort 123



HEG Order Sort ALL

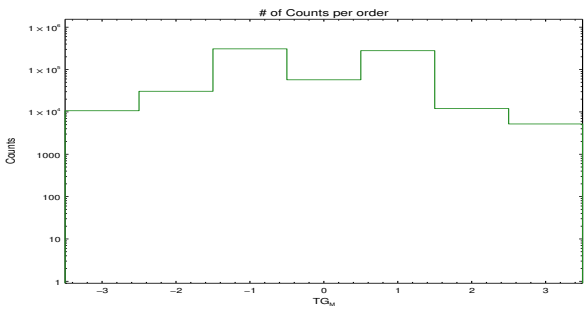


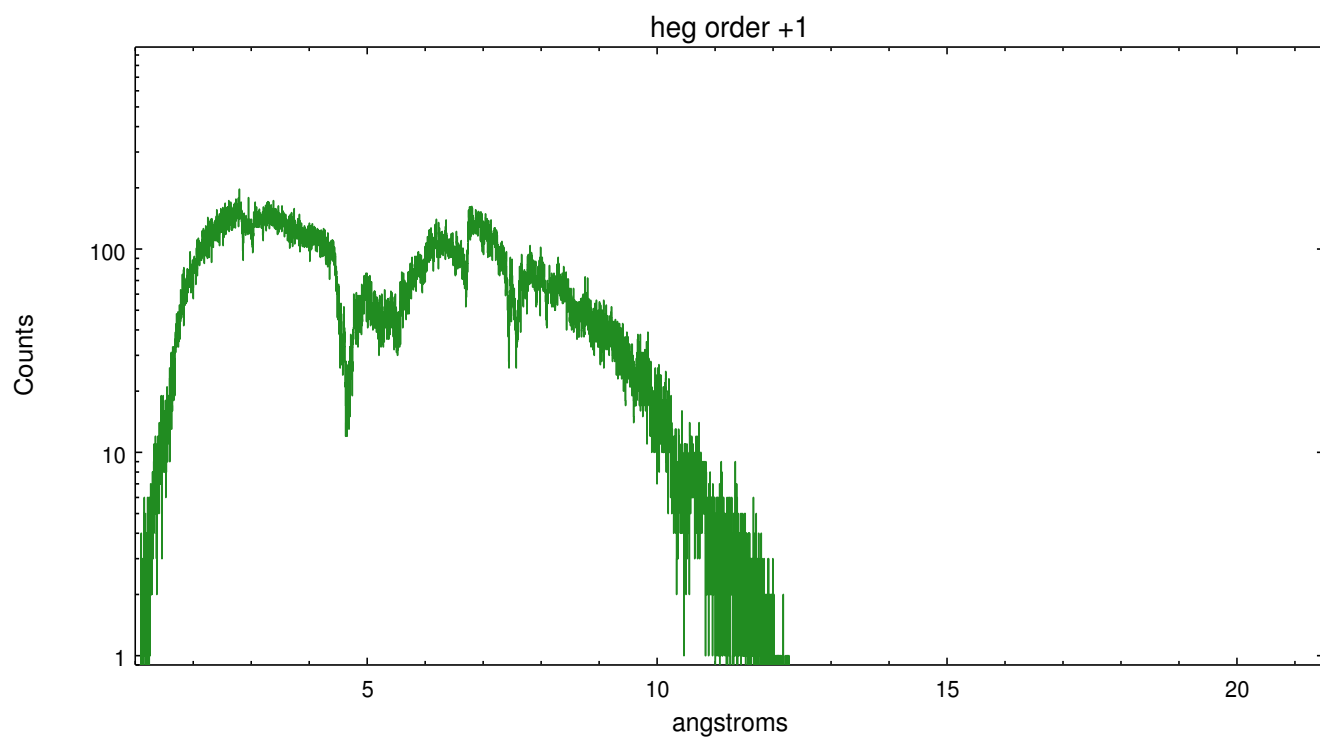
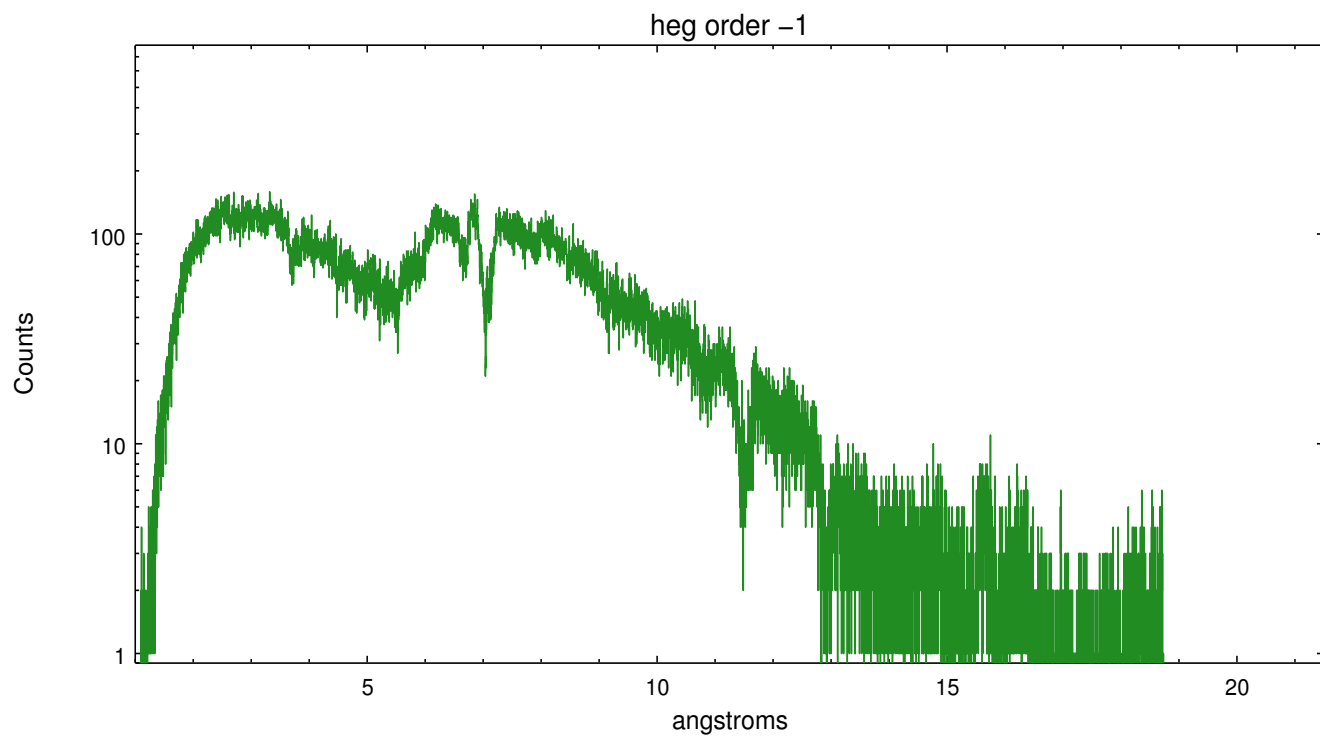
Spot Image HEG



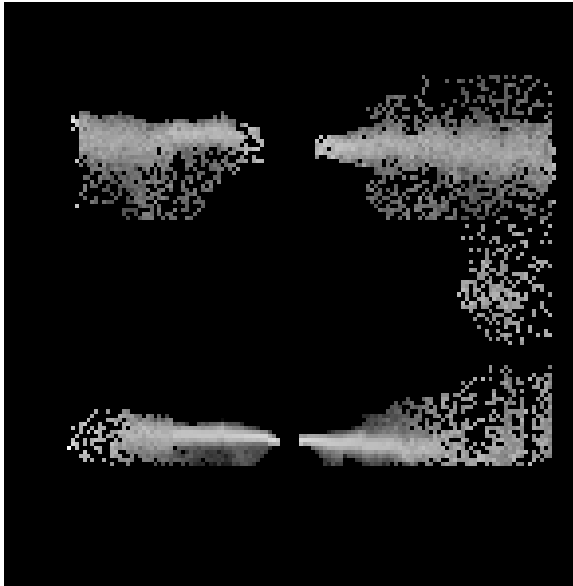
Full Detector HEG

	order -3	order -2	order -1	order 0	order 1	order 2	order 3
Events	10665	30674	308259	57323	279125	11971	5194

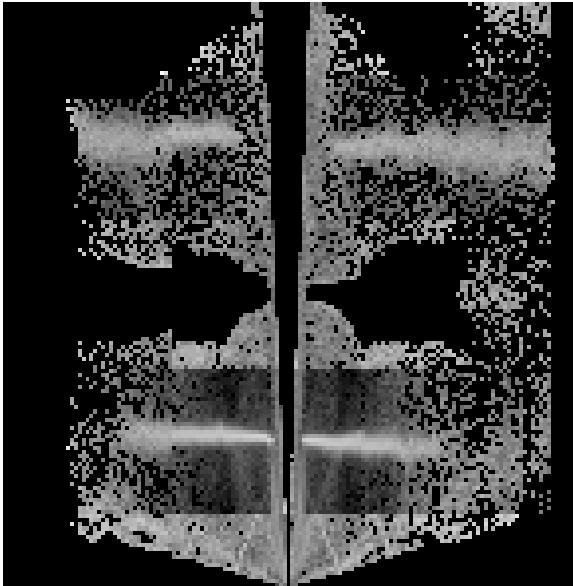




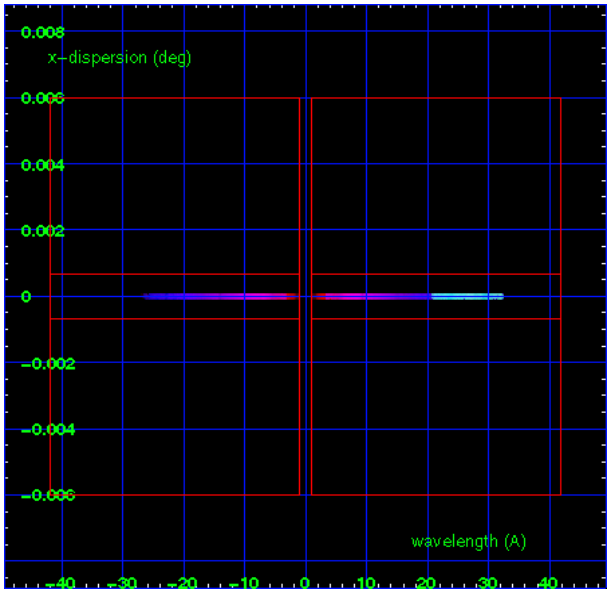
3.2 MEG Arm



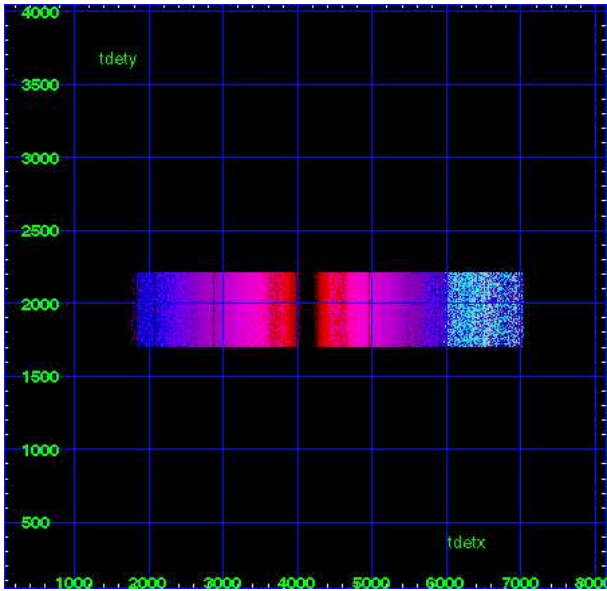
MEG Order Sort 123



MEG Order Sort ALL

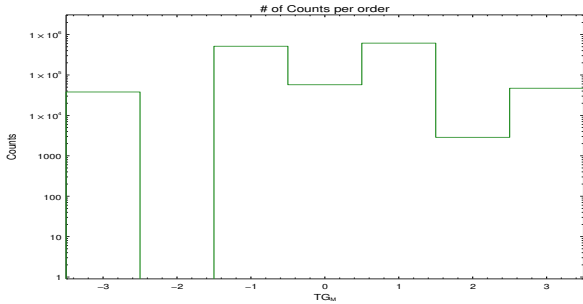


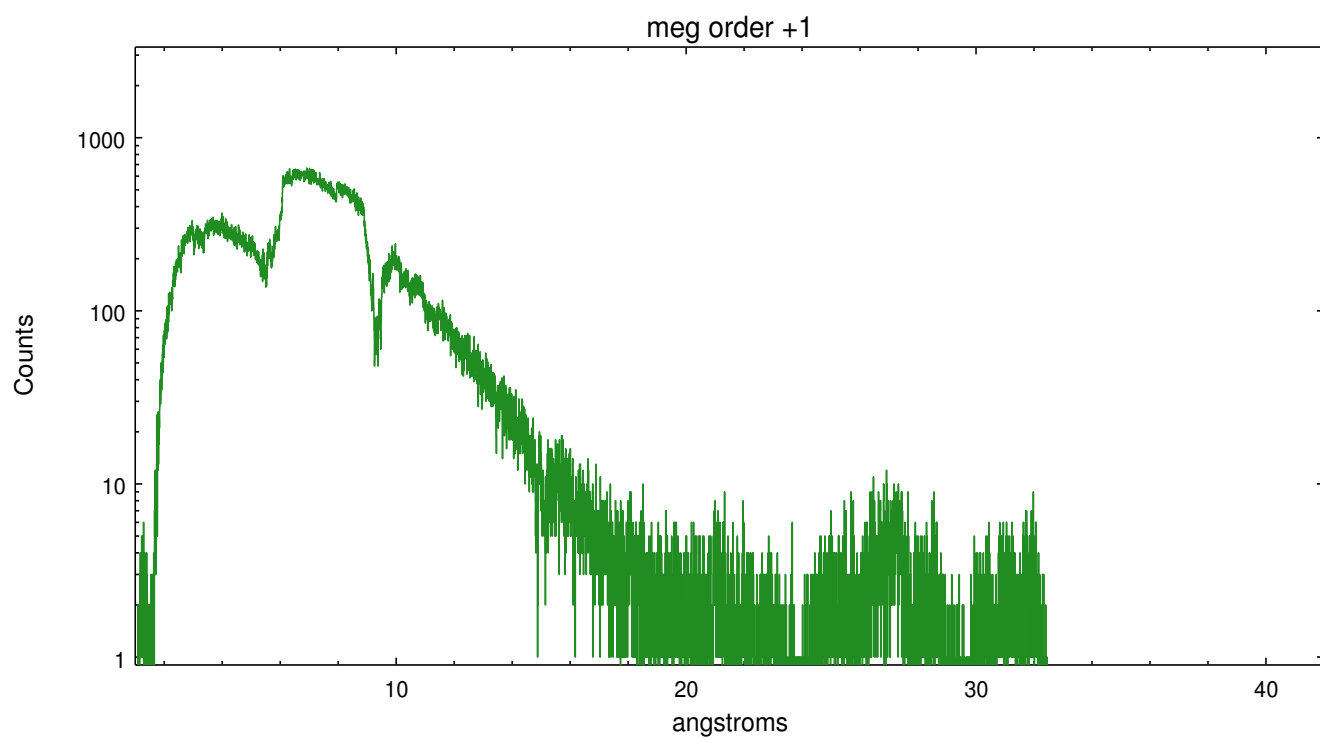
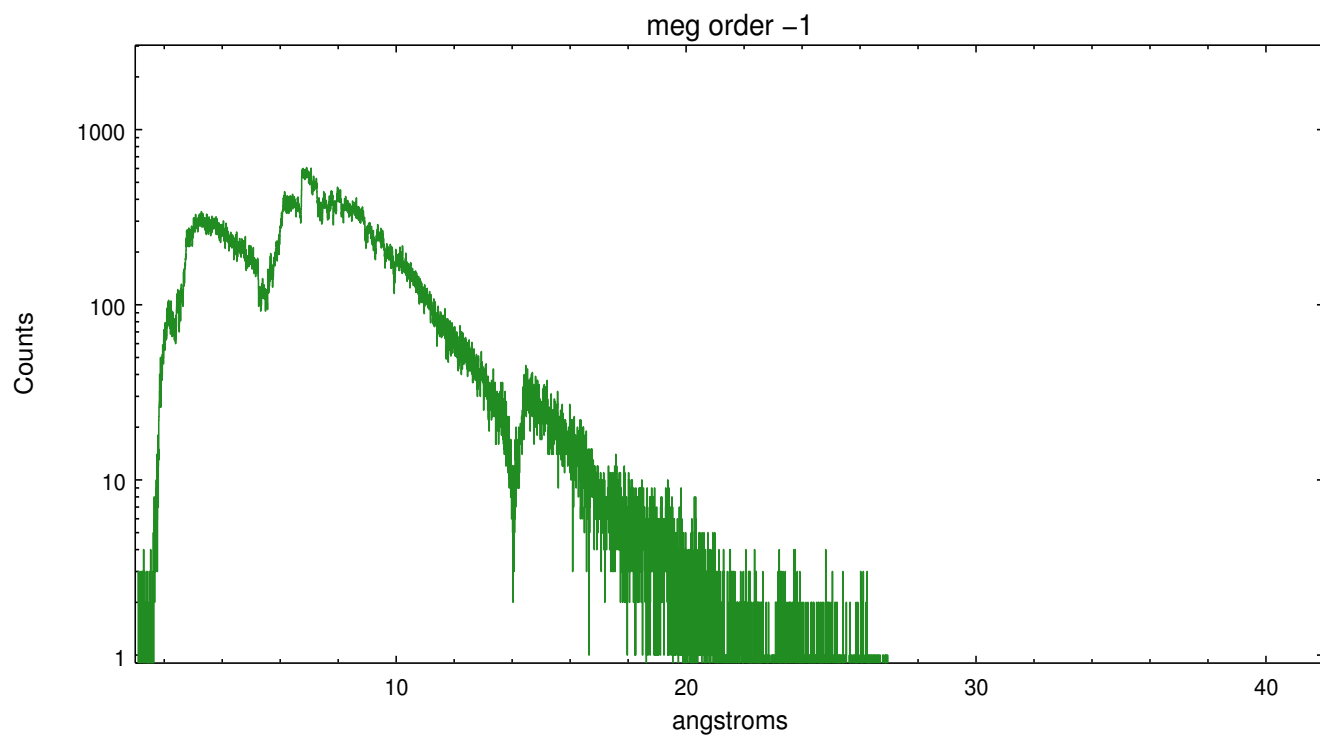
Spot Image MEG



Full Detector MEG

	order -3	order -2	order -1	order 0	order 1	order 2	order 3
Events	37961	0	514441	57323	614174	2865	46992





A Summary

A.1 Status

V&V Scientist	David Huenemoerder
V&V Date (YYYY-MM-DD)	2012.04.09
V&V Edition	1
V&V Disposition and Status	OK
V&V Charge Time	24.181

A.2 Comments