

# V&V Reference Report

## L2 ASCDS Version : 8.4.3

Observation 6397 - L2 Version 2  
Chandra X-Ray Center

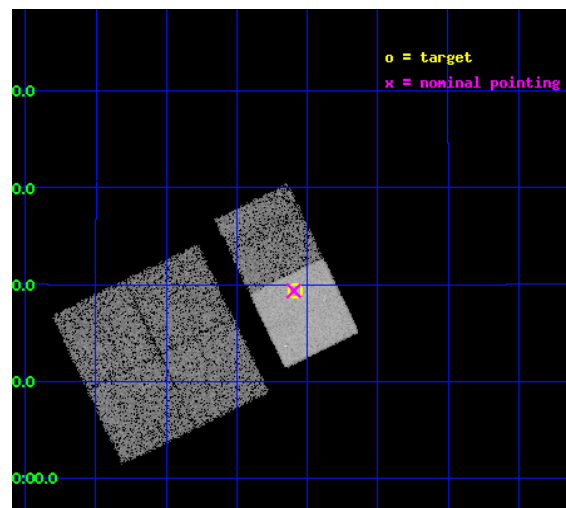
L2 Processing Date : Mar 18 2012

## Contents

<b>1</b>	<b>Front</b>	<b>2</b>
<b>2</b>	<b>OBI</b>	<b>3</b>
2.1	OBI . . . . .	3
2.1.1	Images . . . . .	3
2.1.2	Bias . . . . .	3
2.1.3	Parameters . . . . .	4
2.1.4	Events . . . . .	4
2.2	Compared Parameters . . . . .	5
2.3	Aspect . . . . .	6
2.4	Star Slots . . . . .	9
2.4.1	Slot 3 . . . . .	9
2.4.2	Slot 4 . . . . .	10
2.4.3	Slot 5 . . . . .	11
2.4.4	Slot 6 . . . . .	12
2.4.5	Slot 7 . . . . .	13
2.5	FID Slots . . . . .	14
2.5.1	Slot 0 . . . . .	14
2.5.2	Slot 1 . . . . .	15
2.5.3	Slot 2 . . . . .	16
<b>A</b>	<b>Summary</b>	<b>17</b>
A.1	Status . . . . .	17
A.2	Comments . . . . .	17

# 1 Front

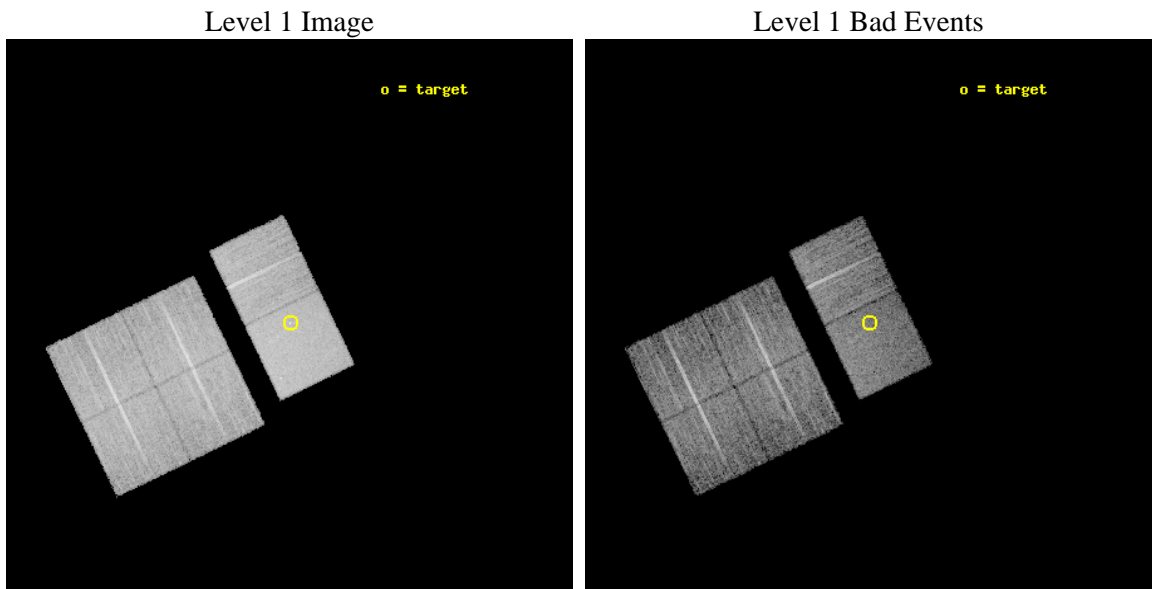
seq_num	200374	Sequence number
obs_id	6397	Observation id
title	On the origin of X-ray emission from Herbig Ae/Be stars	Proposal t
observer	Dr. Beate Stelzer	Principal investigator
object	MWC 147	Source name
dtcycle	0	&#160
cycle	P	events from which exps? Prim/Second/Both
ra_targ	98.271667	Observer's specified target RA [deg]
dec_targ	10.322194	Observer's specified target Dec [deg]
ra_nom	98.273696063648	Nominal RA [deg]
dec_nom	10.322602019222	Nominal Dec [deg]
roll_nom	64.213715294082	Nominal Roll [deg]
revision	2	Processing version of data
ontime	9462.3999647498	Sum of GTIs [s]
livetime	9342.5813588229	Livetime [s]
ontime0	9462.3999647498	Sum of GTIs [s]
ontime1	9462.3999647498	Sum of GTIs [s]
ontime2	9462.3999647498	Sum of GTIs [s]
ontime3	9459.1589744687	Sum of GTIs [s]
ontime6	9462.3999647498	Sum of GTIs [s]
ontime7	9462.3999647498	Sum of GTIs [s]
l2events	80894	Number of level 2 events



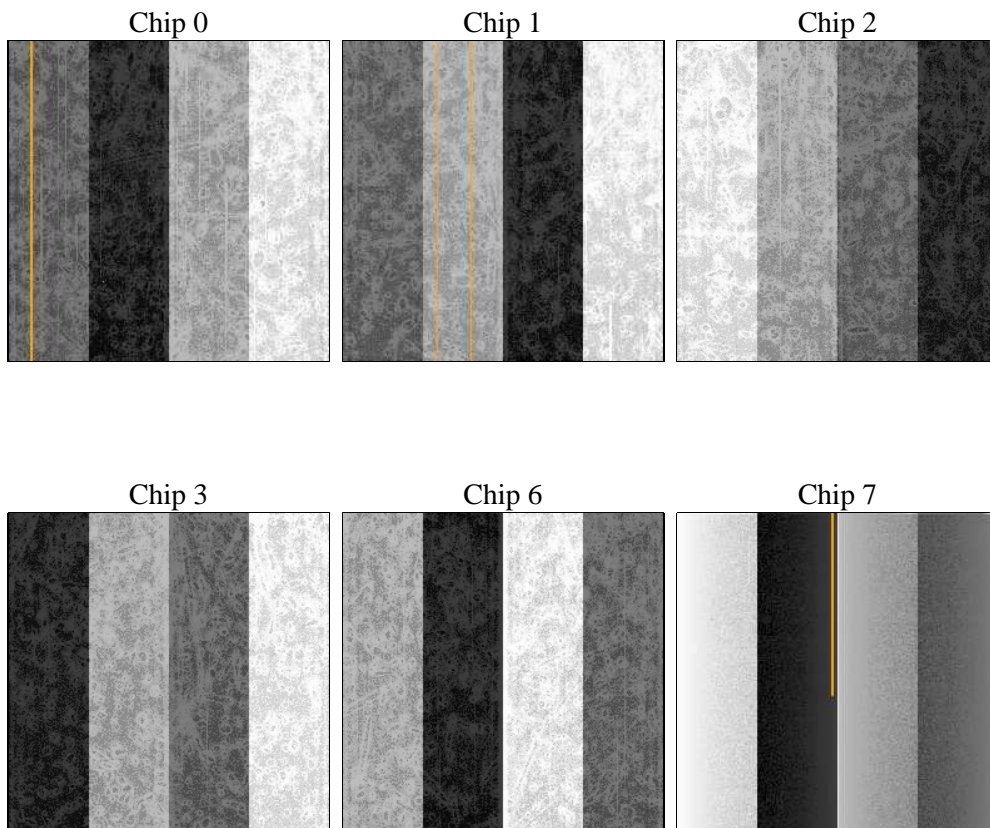
## 2 OBI

### 2.1 OBI

#### 2.1.1 Images



#### 2.1.2 Bias



### 2.1.3 Parameters

obi_num	0	Obi number	sched_exp_time	9300.000000	[s] Scheduled observation exposure time
ascdsver	8.4.3	Processing system revision	ontime	9462.3999647498	Sum of GTIs [s]
caldsver	4.4.8	&#160	ontime0	9462.3999647498	Sum of GTIs [s]
date	2012-03-18T08:22:24	Date and time of file creation	ontime1	9462.3999647498	Sum of GTIs [s]
revision	2	Processing version of data	ontime2	9462.3999647498	Sum of GTIs [s]
			ontime3	9459.1589744687	Sum of GTIs [s]
			ontime6	9462.3999647498	Sum of GTIs [s]
			ontime7	9462.3999647498	Sum of GTIs [s]
			l1events	486411	Number of level 1 events

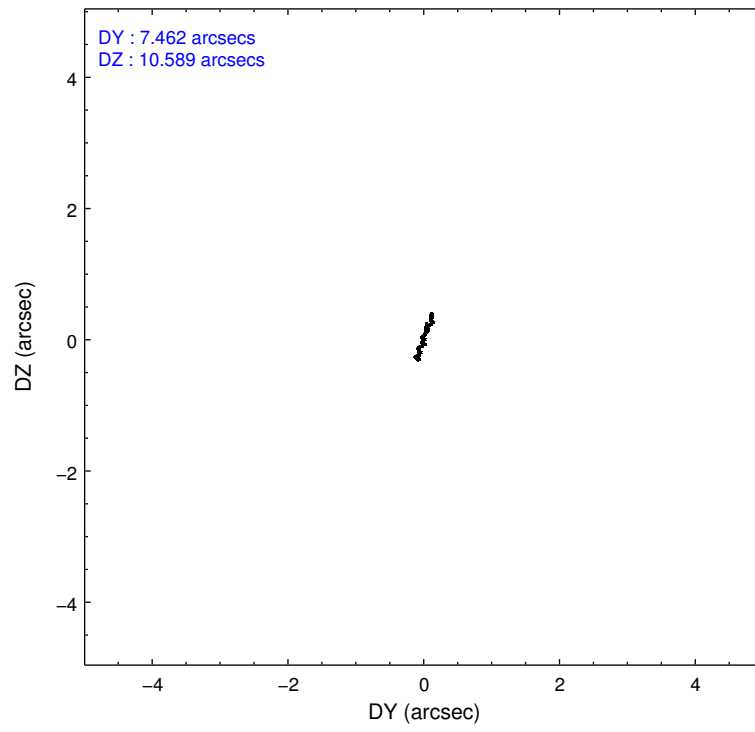
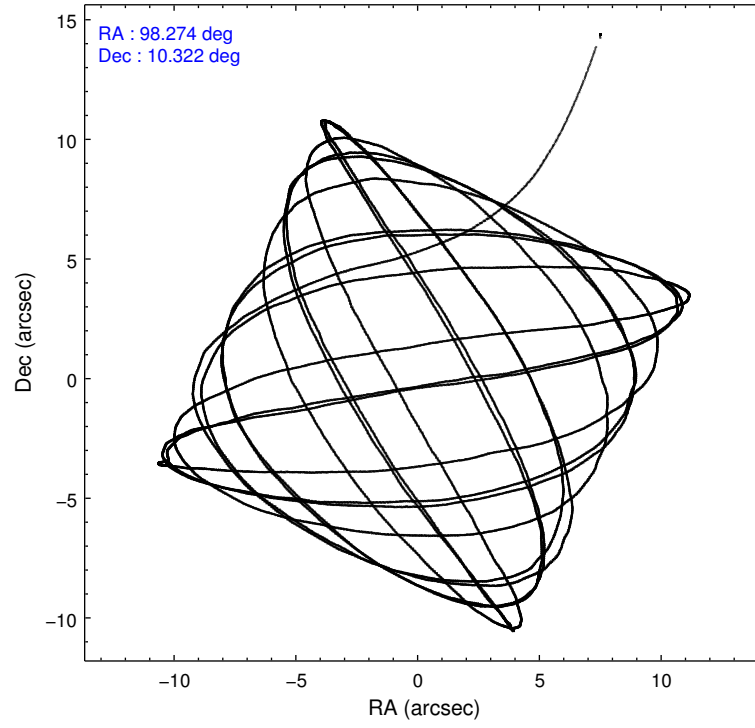
### 2.1.4 Events

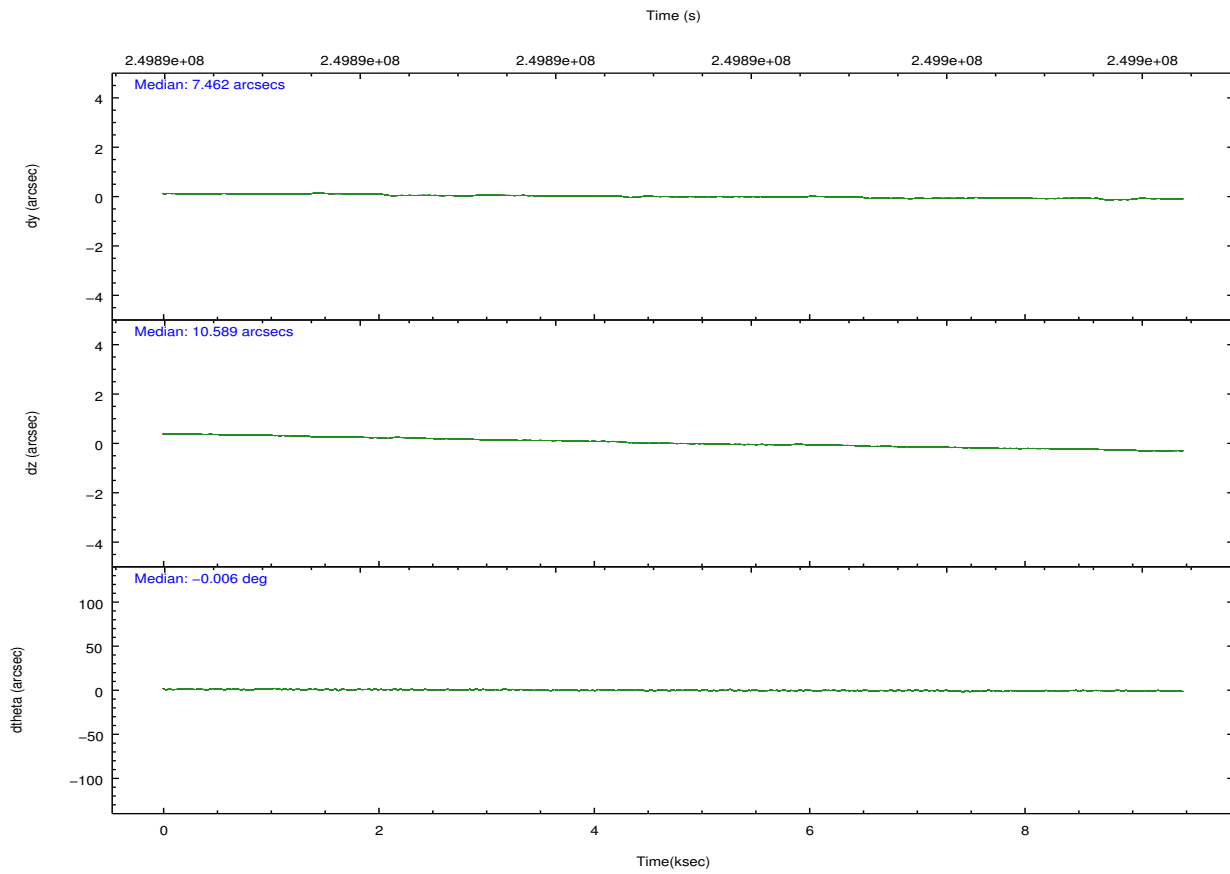
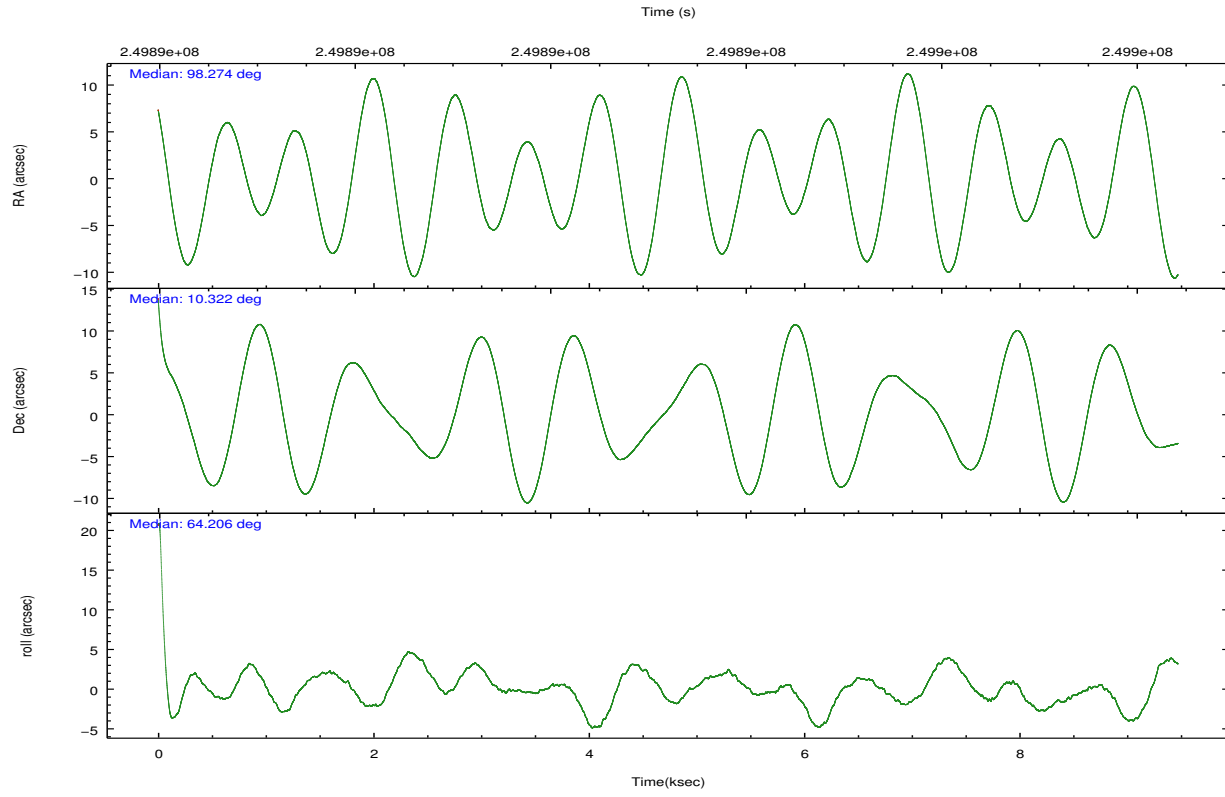
	ccd 0	ccd 1	ccd 2	ccd 3	ccd 6	ccd 7		ccd 0	ccd 1	ccd 2	ccd 3	ccd 6	ccd 7
level 1 events	75489	71382	77840	73850	80440	107410	grade 0 events	3837	3774	3993	3839	3767	3919
rejected events	66416	61895	68964	65140	71326	64418		5%	5%	5%	5%	4%	3%
rejected %	87%	86%	88%	88%	88%	59%	grade 1 events	45	35	44	49	56	127
								0%	0%	0%	0%	0%	0%
							grade 2 events	2111	2170	1932	1759	1983	8721
								2%	3%	2%	2%	2%	8%
							grade 3 events	885	979	895	848	917	3968
								1%	1%	1%	1%	1%	3%
							grade 4 events	848	949	833	873	865	3813
								1%	1%	1%	1%	1%	3%
							grade 5 events	3382	3434	3078	3500	3840	10105
								4%	4%	3%	4%	4%	9%
							grade 6 events	1691	1903	1531	1669	1886	23979
								2%	2%	1%	2%	2%	22%
							grade 7 events	62690	58138	65534	61313	67126	52778
								83%	81%	84%	83%	83%	49%

## 2.2 Compared Parameters

Parameter	Planned	Actual	Parameter	Planned	Actual
Instrument	ACIS	ACIS	Obspar format version number	7	7
Detector	ACIS-012367	ACIS-012367	Obspar file type	PREDICTED	ACTUAL
Grating	NONE	NONE	Obspar update status	NONE	UPDATED
Data mode	FAINT	FAINT	Number of optional ACIS chips dropped	0	0
Observation mode	POINTING	POINTING	On-chip summing requested	N	N
[deg] Pointing RA	98.276158	98.27369606364772	Subarray requested	NONE	NONE
[deg] Pointing Dec	10.295455	10.3226020192218	Alternating exposures requested	N	N
[deg] Pointing Roll	64.056605	64.21371529408174	[s] Primary exposure time	0.000000	3.2
[mm] SIM focus pos	-0.684267	-0.6828225247311905			
[mm] SIM defocus	0	0.001444936568705701			
[mm] SIM translation stage pos	-190.132523	-190.1425803651734			
[mm] SIM translation stage offset	0	0.01005778216563158			
[s] Observation start time (MET)	249888631.184000	249887413.59688			
Observation start date	2005-12-02T05:29:27	2005-12-02T05:10:13			
[s] Observation end time (MET)	249897931.184000	249898529.72239			
Observation end date	2005-12-02T08:04:27	2005-12-02T08:15:29			
Read mode	TIMED	TIMED			

## 2.3 Aspect



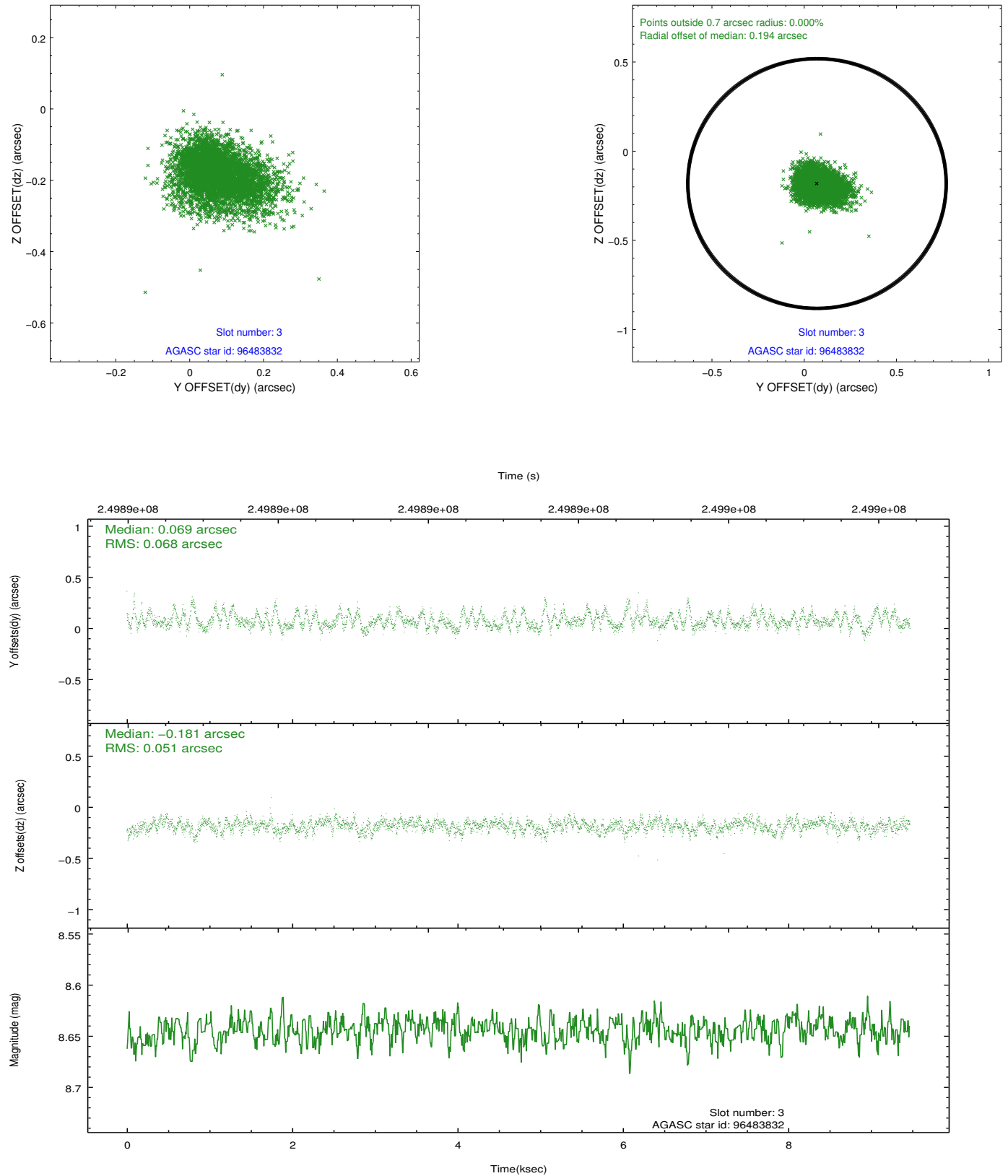


### Slot Statistics

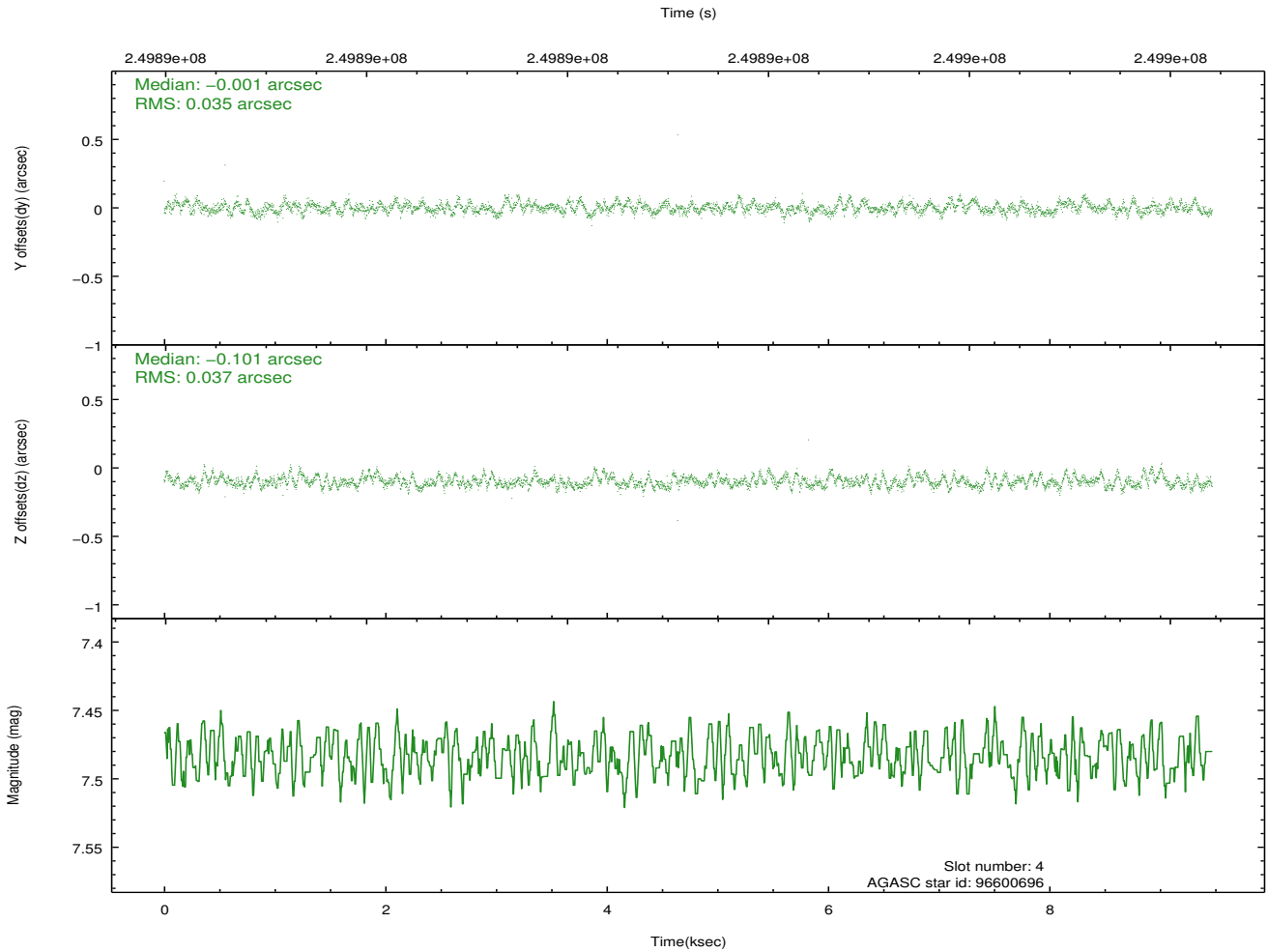
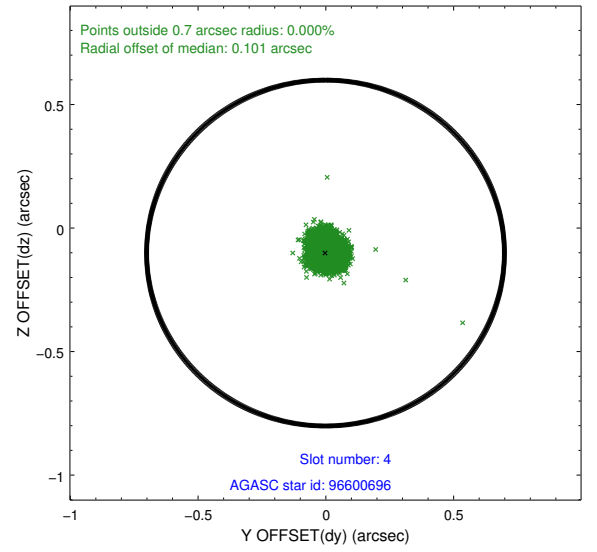
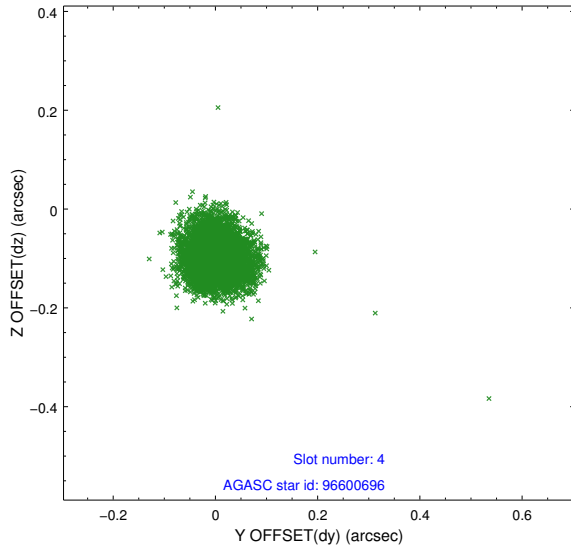
slot	status	id	mag	n_pts	med_dy	med_dz	dr1	dr2	ra	dec	mean_y	mean_z
0	FID	ACIS-S-1	7.19	2311	0.040	-0.066	0.015	0.023	0.000000	0.000000	935.85	-1727.52
1	FID	ACIS-S-5	7.24	2310	-0.074	0.022	0.007	0.012	0.000000	0.000000	-1812.95	169.53
2	FID	ACIS-S-6	7.35	2309	0.012	0.056	0.012	0.018	0.000000	0.000000	400.75	814.17
3	GUIDE	96483832	8.64	4617	0.069	-0.181	0.087	0.150	97.592744	10.129290	-1595.02	1916.84
4	GUIDE	96600696	7.48	4620	-0.001	-0.101	0.054	0.087	98.163827	10.423290	239.80	559.16
5	GUIDE	96611152	9.00	4618	-0.018	0.219	0.083	0.138	98.677001	9.605534	-1609.56	-2365.69
6	GUIDE	96603600	7.09	4621	-0.101	-0.189	0.062	0.098	97.920572	11.102189	2062.35	2400.00
7	GUIDE	96607112	7.96	4619	0.046	0.255	0.077	0.120	99.040507	10.284881	1154.33	-2449.06

## 2.4 Star Slots

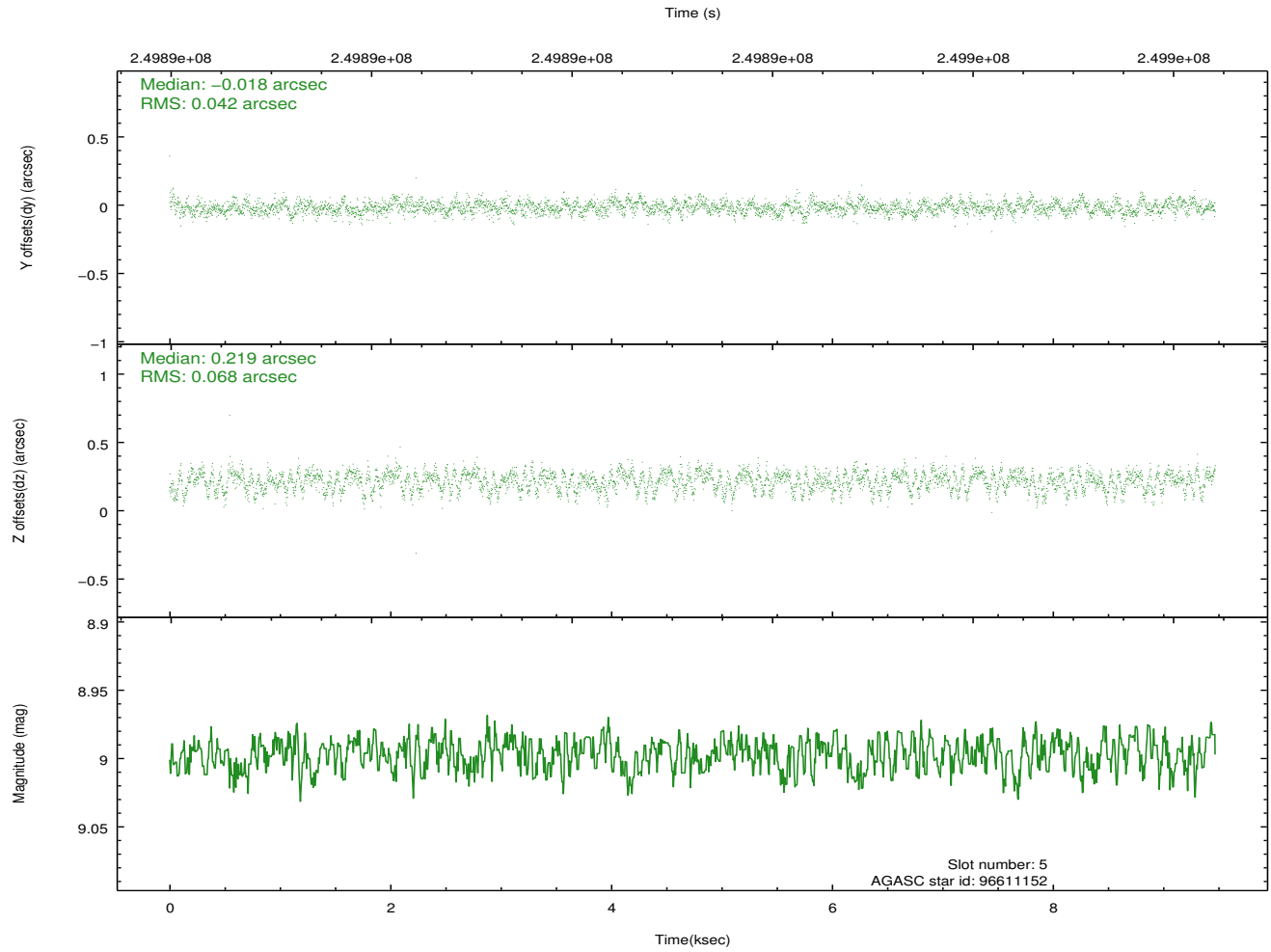
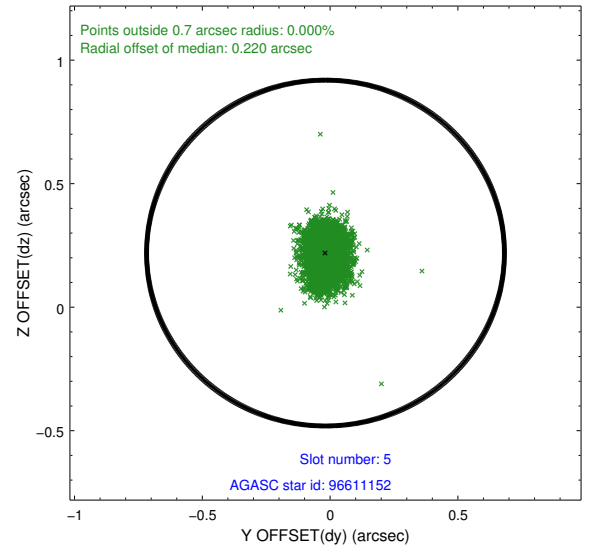
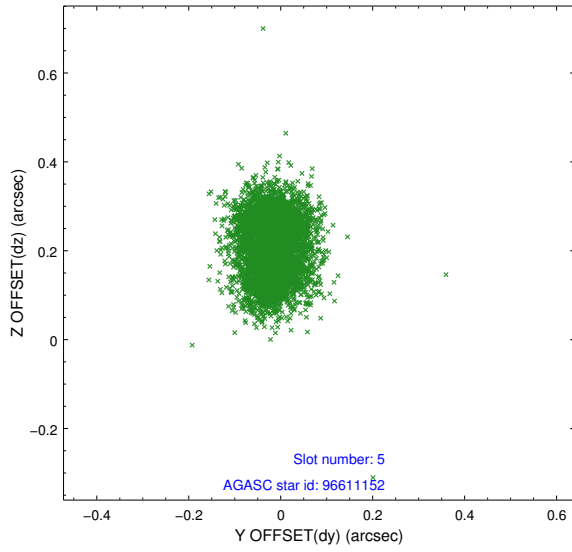
### 2.4.1 Slot 3



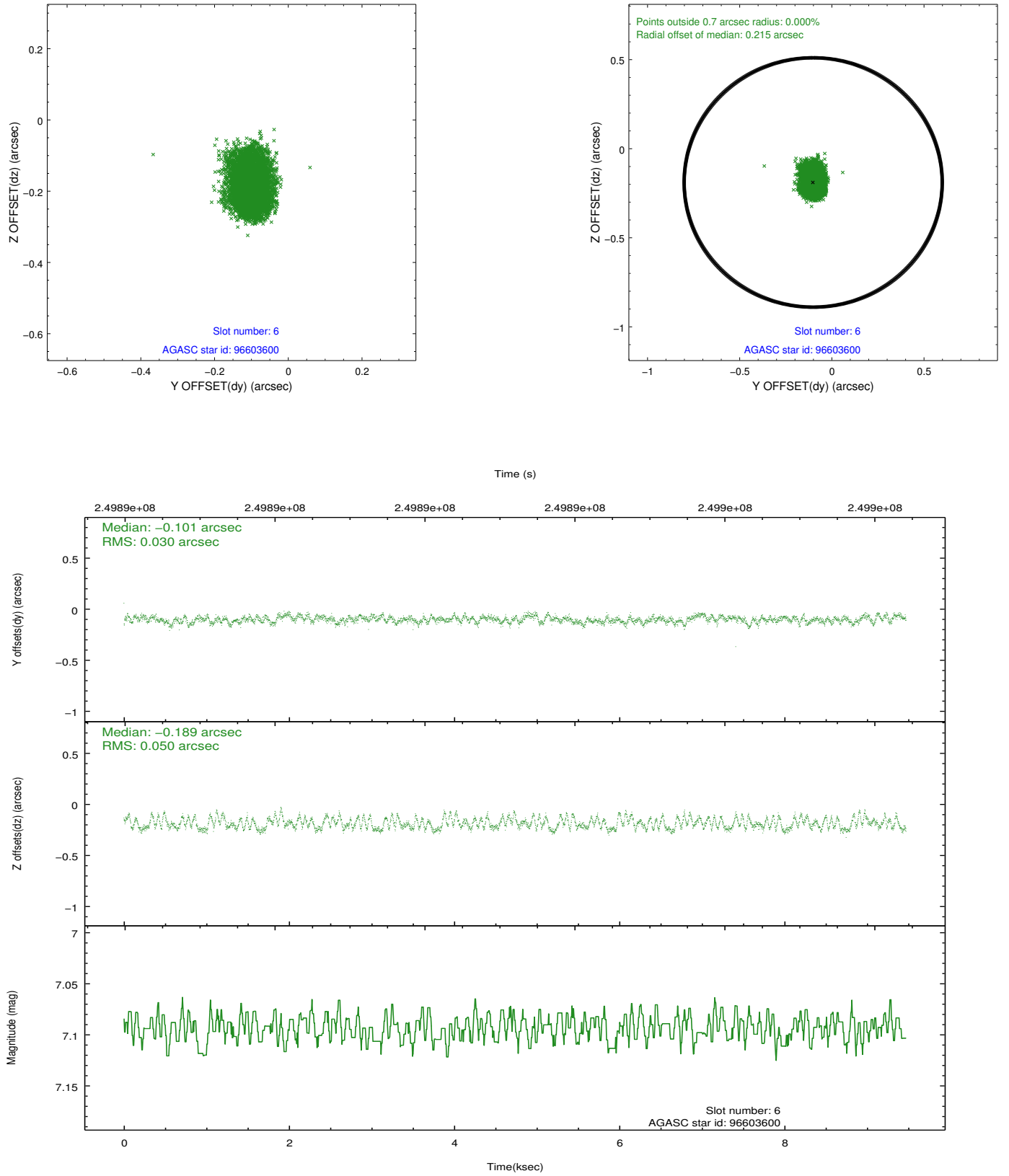
## 2.4.2 Slot 4



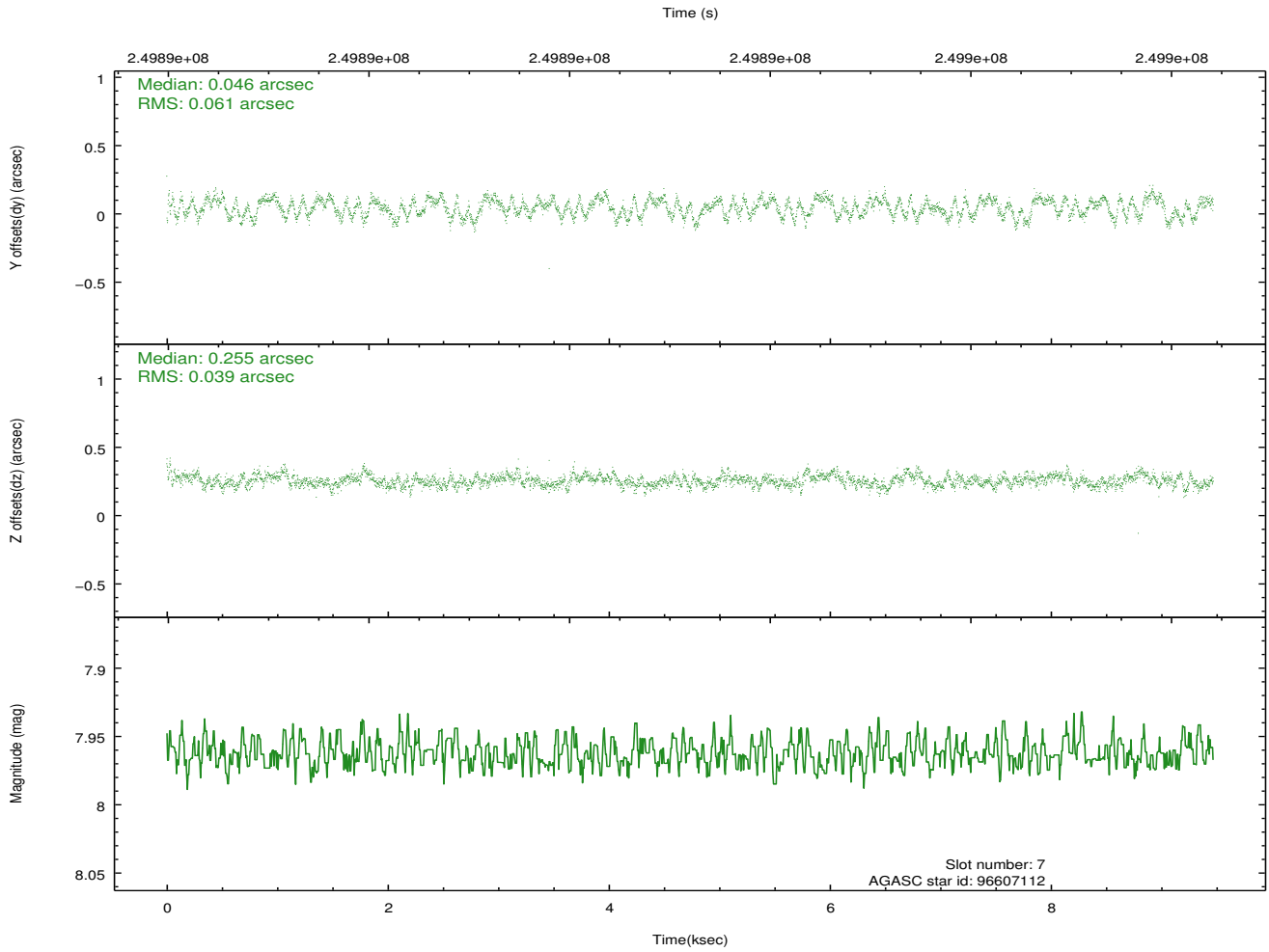
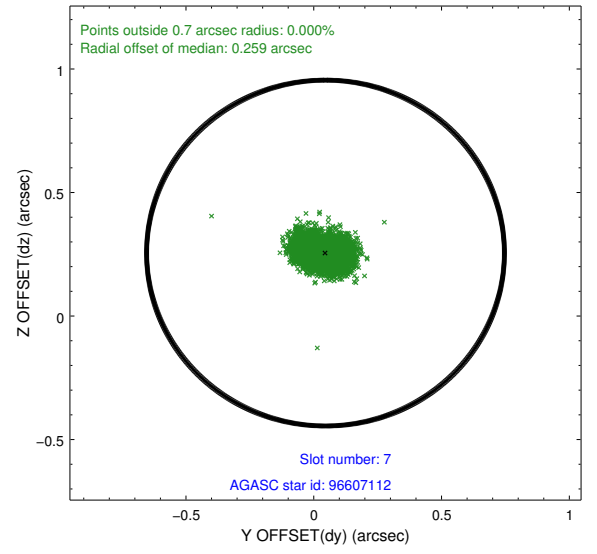
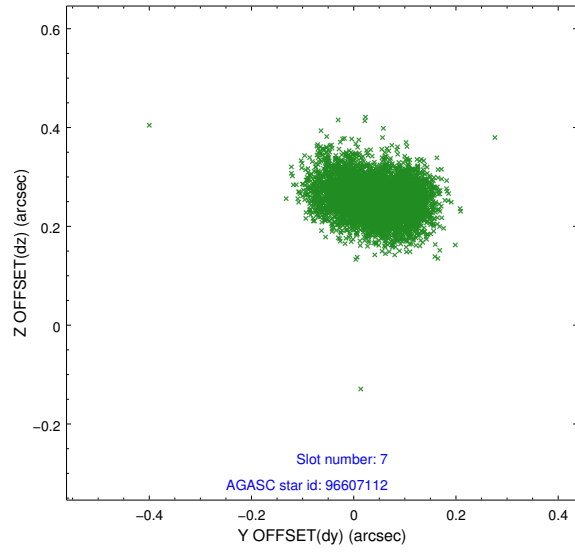
### 2.4.3 Slot 5



## 2.4.4 Slot 6

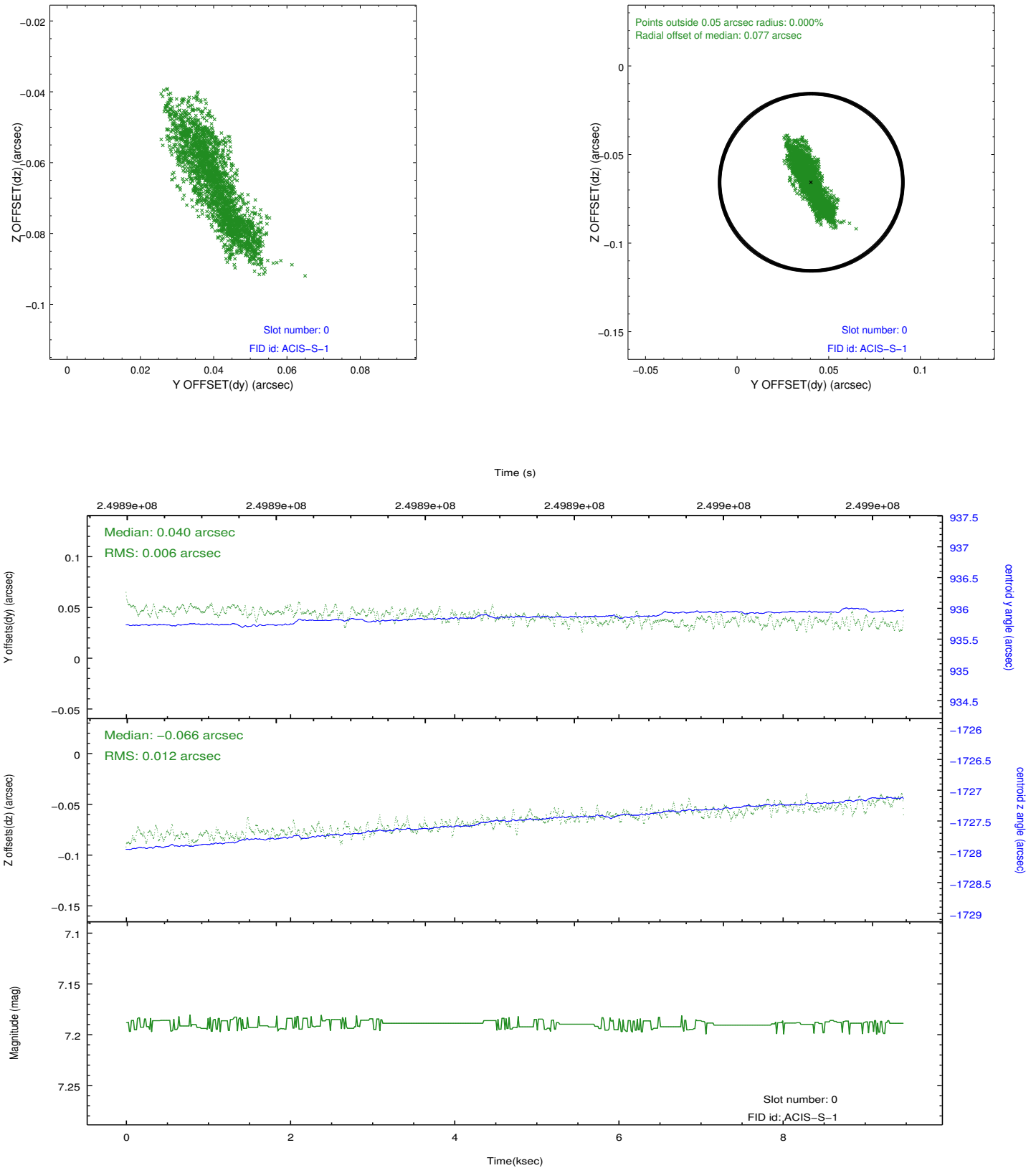


## 2.4.5 Slot 7

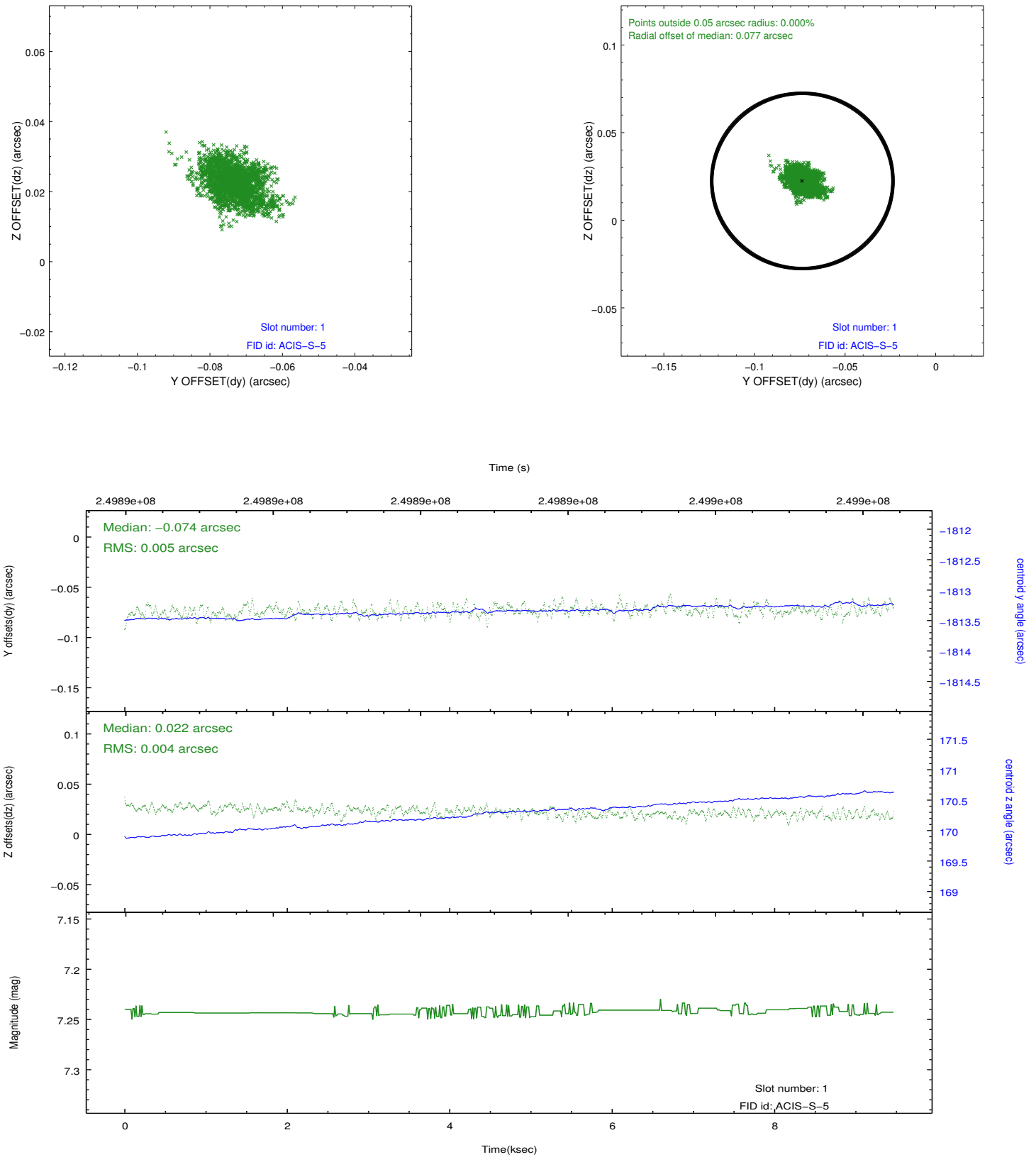


## 2.5 FID Slots

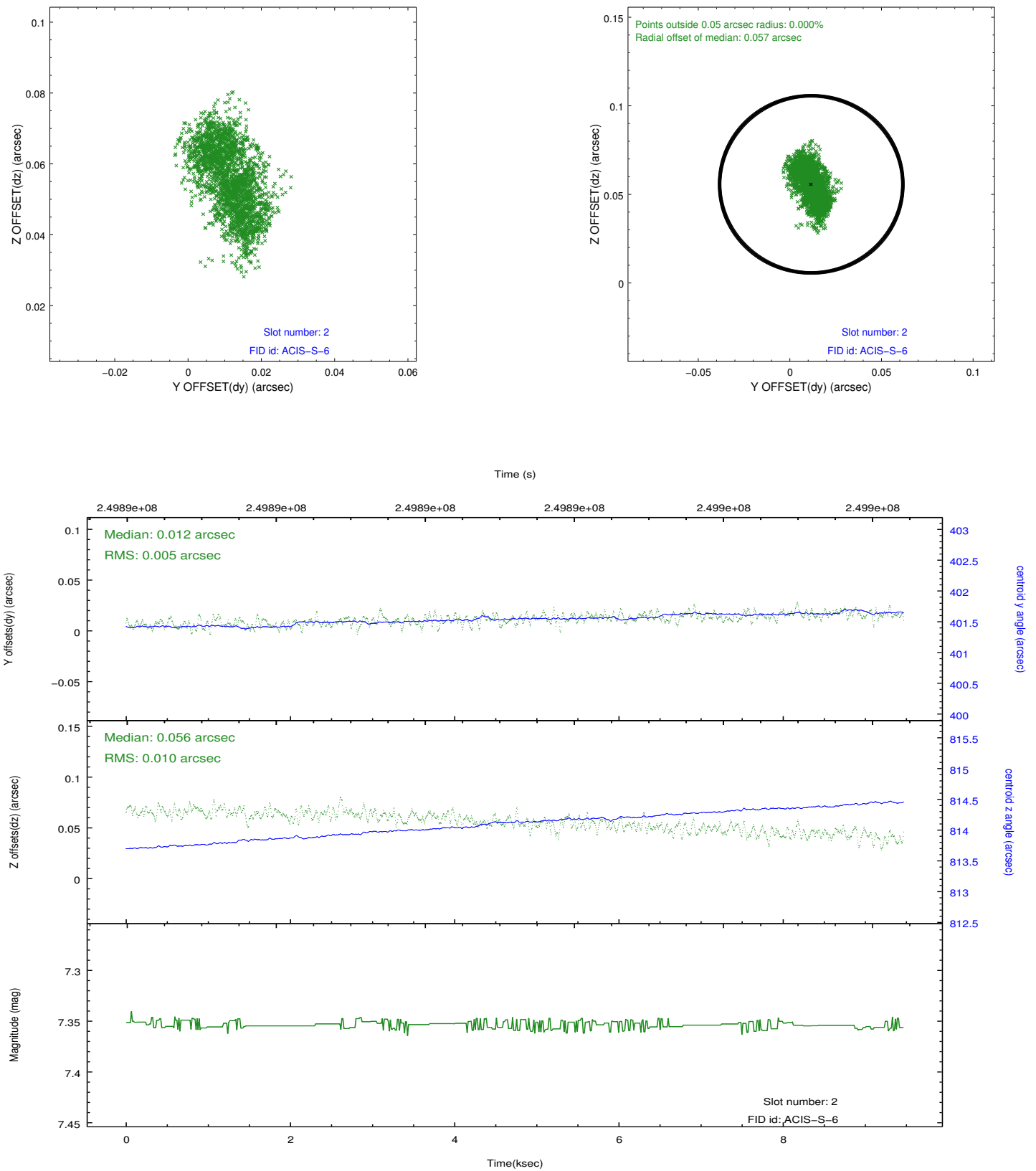
### 2.5.1 Slot 0



## 2.5.2 Slot 1



### 2.5.3 Slot 2



## A Summary

### A.1 Status

V&V Scientist	Jen Lauer
V&V Date (YYYY-MM-DD)	2012.03.19
V&V Edition	1
V&V Disposition and Status	OK
V&V Charge Time	9.462399

### A.2 Comments