

V&V Reference Report

L2 ASCDS Version : 8.4.5

Observation 62887 - L2 Version 6
Chandra X-Ray Center

L2 Processing Date : Aug 28 2012

Contents

1	Front	2
2	OBI	3
2.1	OBI	3
2.1.1	Images	3
2.1.2	Bias	3
2.1.3	Parameters	4
2.1.4	Events	4
2.2	Compared Parameters	5
2.3	Star Slots	6
2.4	FID Slots	6
A	Summary	7
A.1	Status	7
A.2	Comments	7

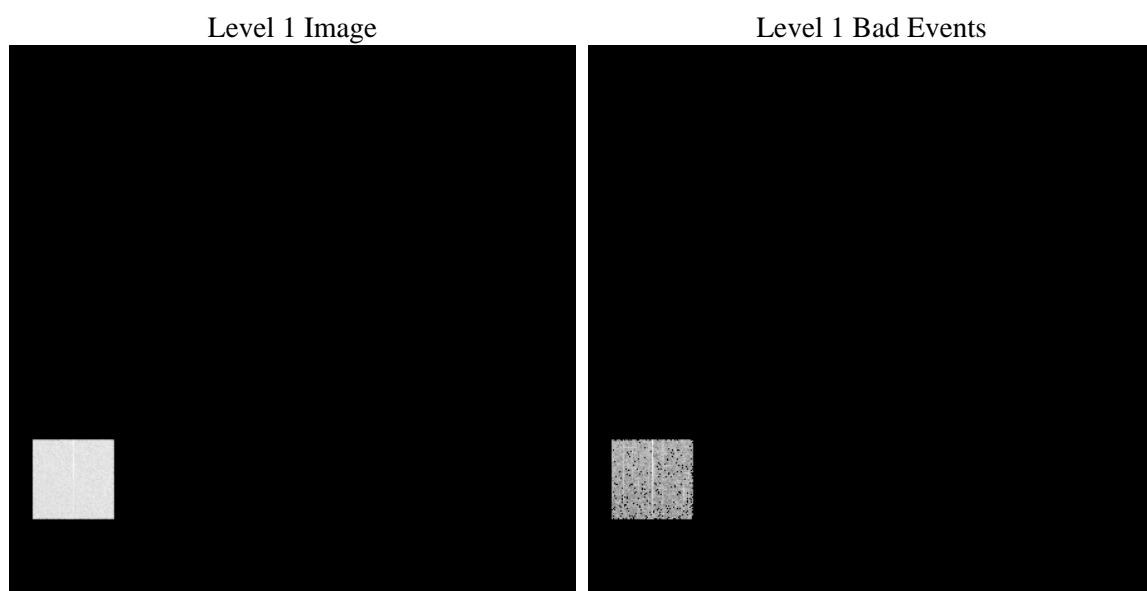
1 Front

seq_num	 	Sequence number
obs_id	62887	Observation id
title	ACIS-4 diagnostics; squeegee IV, non-squeegee run, CAP 607	Proposa
observer	CHANDRA engineering request/realtime commanding	Principal investig
object	 	Source name
dtcycle	0	
cycle	P	events from which exps? Prim/Second/Both
ra_targ	0.0	Observer's specified target RA [deg]
dec_targ	0.0	Observer's specified target Dec [deg]
ra_nom	303.35727904969	Nominal RA [deg]
dec_nom	-42.64999797513	Nominal Dec [deg]
roll_nom	91.322950158908	Nominal Roll [deg]
revision	6	Processing version of data
ontime	1633.6337800324	Sum of GTIs [s]
livetime	1613.5668756156	Livetime [s]
ontime4	1633.6337800324	Sum of GTIs [s]
l2events	102431	Number of level 2 events

2 OBI

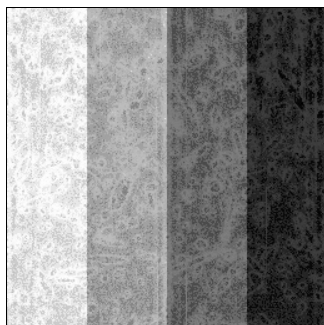
2.1 OBI

2.1.1 Images



2.1.2 Bias

Chip 4



2.1.3 Parameters

obi_num	0	Obi number	sched_exp_time	0.0	[s] Scheduled observation exposure time
ascdsver	8.4.5	Processing system revision	ontime	1633.6337800324	Sum of GTIs [s]
caldsver	4.5.1.1	 	ontime4	1633.6337800324	Sum of GTIs [s]
date	2012-08-28T06:55:41	Date and time of file creation	l1events	130693	Number of level 1 events
revision	6	Processing version of data			

2.1.4 Events

	ccd 4
level 1 events	130693
rejected events	15644
rejected %	11%

	ccd 4
grade 0 events	64745
	49%
grade 1 events	358
	0%
grade 2 events	20485
	15%
grade 3 events	7130
	5%
grade 4 events	7092
	5%
grade 5 events	990
	0%
grade 6 events	15802
	12%
grade 7 events	14091
	10%

2.2 Compared Parameters

Parameter	Planned	Actual	Parameter	Planned	Actual
Instrument	ACIS	ACIS	Obspar format version number	7	7
Detector	ACIS-4	ACIS-4	Obspar file type	PREDICTED	ACTUAL
Grating	NONE	NONE	Obspar update status	OVERRIDE	OVERRIDE
Data mode	FAINT	FAINT	Number of optional ACIS chips dropped	0	0
Observation mode	SECONDARY	SECONDARY	On-chip summing requested	N	N
[deg] Pointing RA	200.4290446539565	303.3572790496887	Subarray requested	NONE	NONE
[deg] Pointing Dec	-42.64999797300137	-42.64999797513013	Alternating exposures requested	N	N
[deg] Pointing Roll	91.32295014804268	91.3229501589076	[s] Primary exposure time	3.2	3.2
[mm] SIM focus pos	0	0			
[mm] SIM defocus	1.040292588355445	1.040292588355445			
[mm] SIM translation stage pos	0	0			
[mm] SIM translation stage offset	126.9854943052878	126.9854943052878			
[s] Observation start time (MET)	75433406.934	75433406.934			
Observation start date	2000-05-23T01:43:26	2000-05-23T01:43:26			
[s] Observation end time (MET)	75441923.46008991	75441923.46008991			
Observation end date	2000-05-23T04:05:23	2000-05-23T04:05:23			
Read mode	TIMED	TIMED			

2.3 Star Slots

2.4 FID Slots

A Summary

A.1 Status

V&V Scientist	Jen Lauer
V&V Date (YYYY-MM-DD)	2012.08.30
V&V Edition	1
V&V Disposition and Status	OK
V&V Charge Time	1.6336337800324

A.2 Comments