

# V&V Reference Report

## L2 ASCDS Version : 8.4.5

Observation 627 - L2 Version 4  
Chandra X-Ray Center

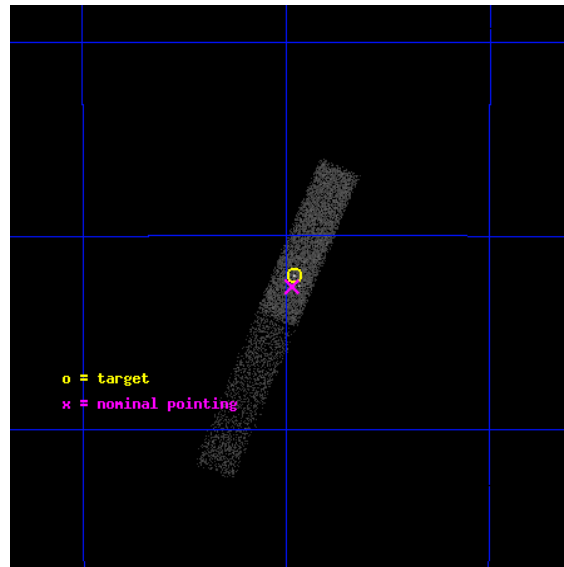
L2 Processing Date : Aug 28 2012

## Contents

<b>1</b>	<b>Front</b>	<b>2</b>
<b>2</b>	<b>OBI</b>	<b>3</b>
2.1	OBI . . . . .	3
2.1.1	Images . . . . .	3
2.1.2	Bias . . . . .	3
2.1.3	Parameters . . . . .	4
2.1.4	Events . . . . .	4
2.2	Compared Parameters . . . . .	5
2.3	Aspect . . . . .	6
2.4	Star Slots . . . . .	9
2.4.1	Slot 3 . . . . .	9
2.4.2	Slot 4 . . . . .	10
2.4.3	Slot 5 . . . . .	11
2.4.4	Slot 6 . . . . .	12
2.5	FID Slots . . . . .	13
2.5.1	Slot 0 . . . . .	13
2.5.2	Slot 1 . . . . .	14
2.5.3	Slot 2 . . . . .	15
<b>A</b>	<b>Summary</b>	<b>16</b>
A.1	Status . . . . .	16
A.2	Comments . . . . .	16

# 1 Front

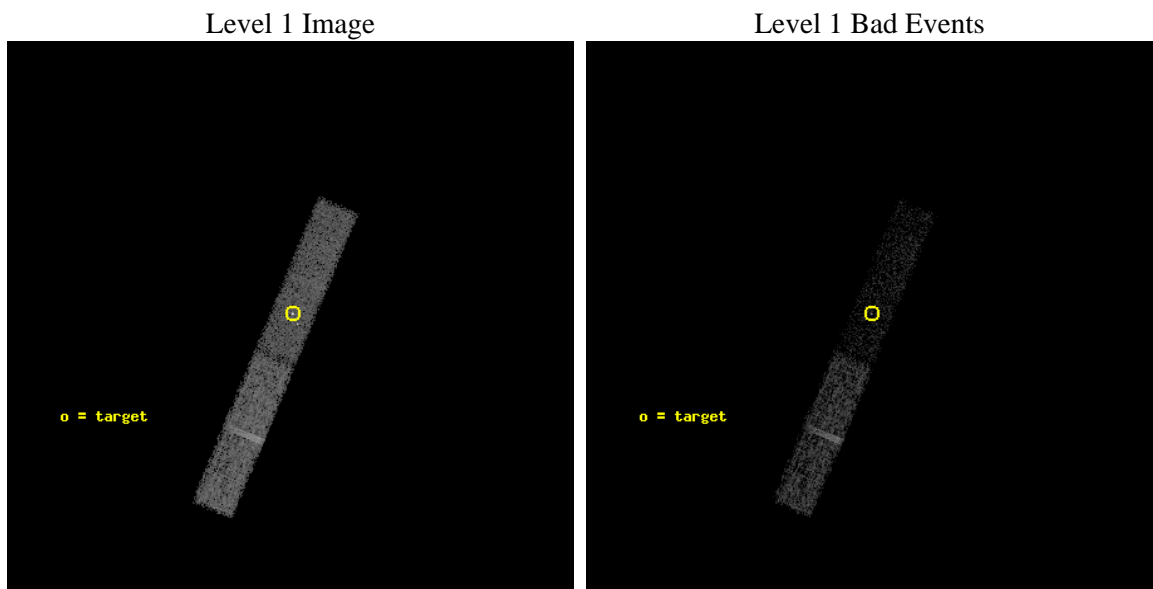
seq_num	200052	Sequence number
obs_id	627	Observation id
title	A COMPREHENSIVE INVESTIGATION OF X-RAY EMISSION FROM INTERMEDIATE MASS STARS	Proposal title
observer	Dr. Jeffrey Linsky	Principal investigator
object	HD 129791	Source name
dtcycle	0	&#160
cycle	P	events from which exps? Prim/Second/Both
ra_targ	221.490167	Observer's specified target RA [deg]
dec_targ	-44.867503	Observer's specified target Dec [deg]
ra_nom	221.49315582895	Nominal RA [deg]
dec_nom	-44.87725760901	Nominal Dec [deg]
roll_nom	292.76427812186	Nominal Roll [deg]
revision	4	Processing version of data
ontime	6584.344463557	Sum of GTIs [s]
livetime	6297.1924861869	Livetime [s]
ontime6	6583.3624034971	Sum of GTIs [s]
ontime7	6584.344463557	Sum of GTIs [s]
l2events	11782	Number of level 2 events



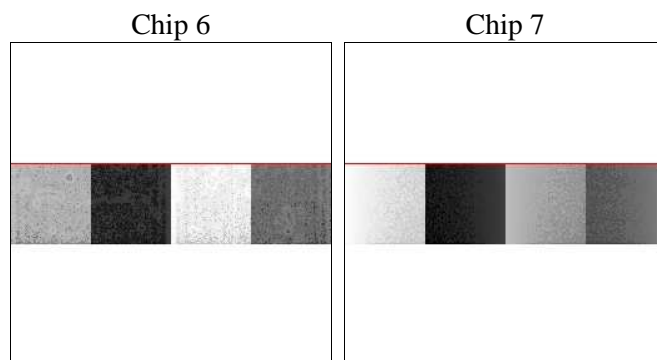
## 2 OBI

### 2.1 OBI

#### 2.1.1 Images



#### 2.1.2 Bias



### 2.1.3 Parameters

obi_num	1	Obi number	sched_exp_time	6900.000000	[s] Scheduled observation exposure time
ascdsver	8.4.5	Processing system revision	ontime	6584.344463557	Sum of GTIs [s]
caldsver	4.5.1.1	&#160	ontime6	6583.3624034971	Sum of GTIs [s]
date	2012-08-28T22:30:49	Date and time of file creation	ontime7	6584.344463557	Sum of GTIs [s]
revision	4	Processing version of data	l1events	38480	Number of level 1 events

### 2.1.4 Events

	ccd 6	ccd 7
level 1 events	21728	16752
rejected events	19005	6763
rejected %	87%	40%

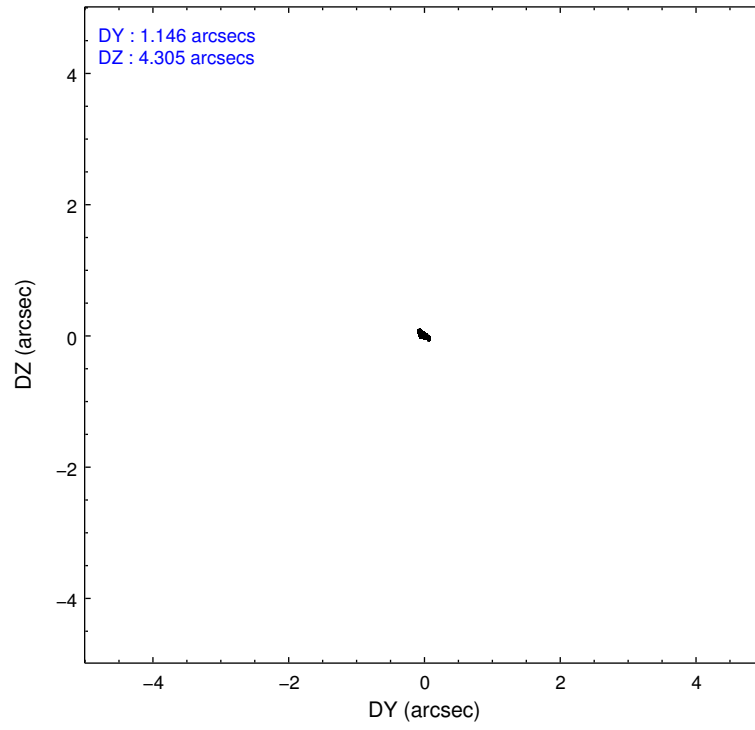
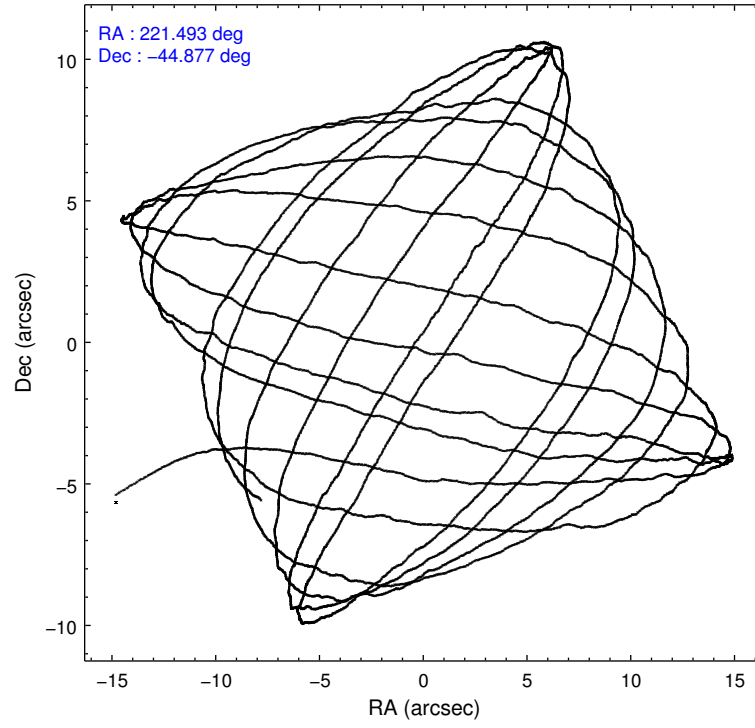
	ccd 6	ccd 7
grade 0 events	1211	1739
	5%	10%
grade 1 events	5	41
	0%	0%
grade 2 events	465	2158
	2%	12%
grade 3 events	365	1126
	1%	6%
grade 4 events	338	1078
	1%	6%
grade 5 events	344	1269
	1%	7%
grade 6 events	344	3888
	1%	23%
grade 7 events	18656	5453
	85%	32%

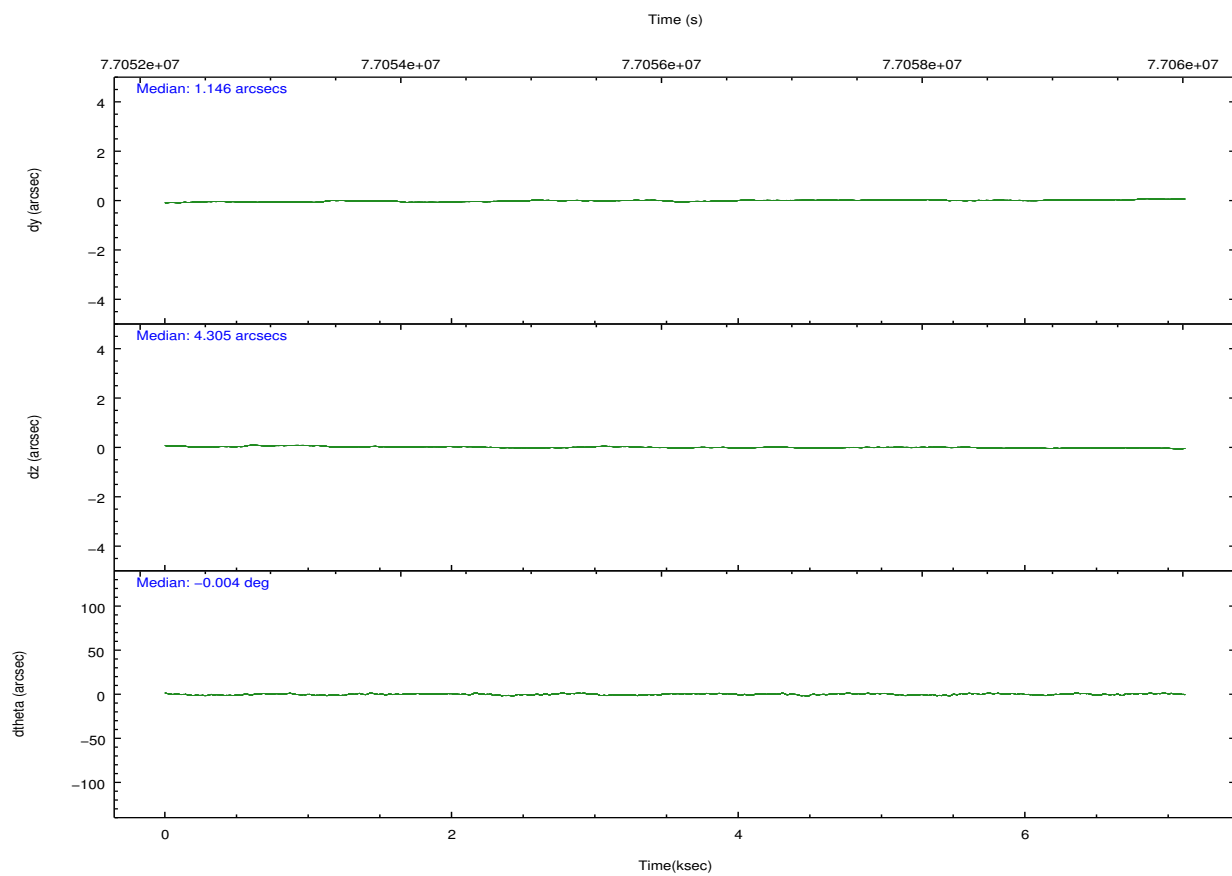
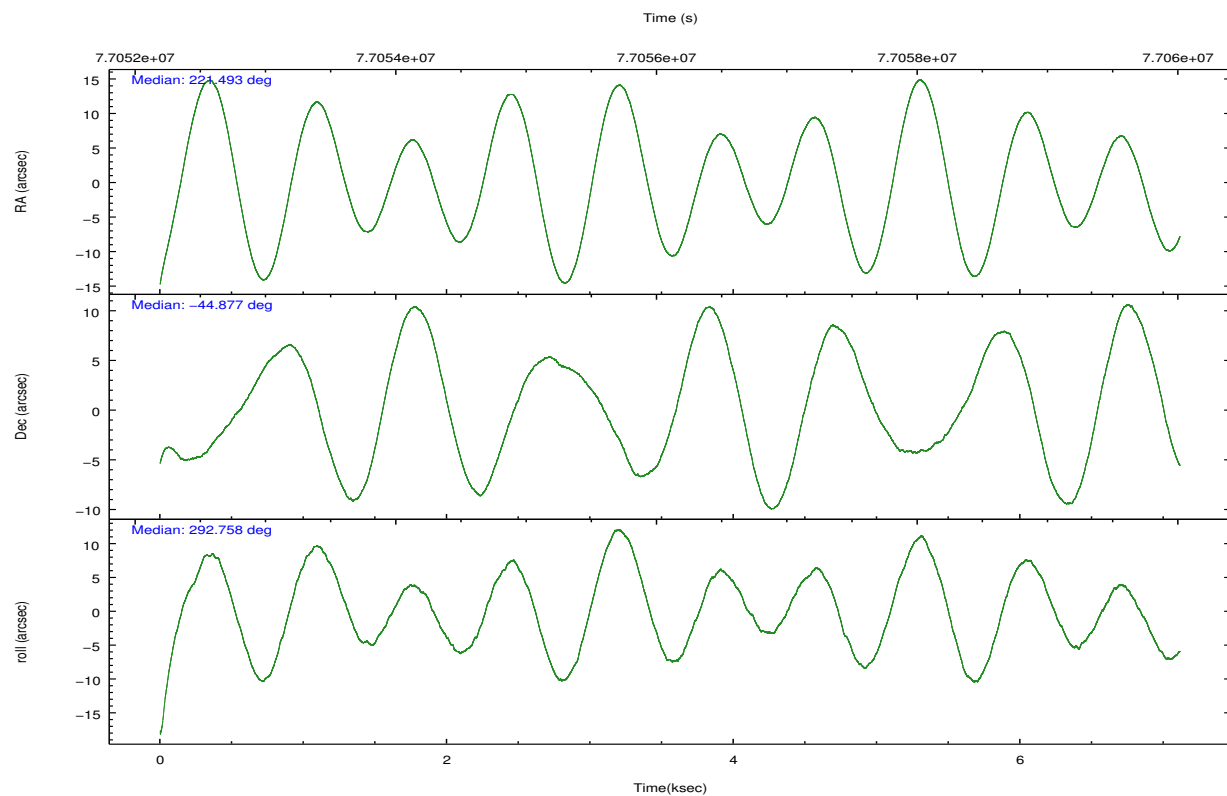


## 2.2 Compared Parameters

Parameter	Planned	Actual	Parameter	Planned	Actual
Instrument	ACIS	ACIS	Obspar format version number	7	7
Detector	ACIS-67	ACIS-67	Obspar file type	PREDICTED	ACTUAL
Grating	NONE	NONE	Obspar update status	NONE	UPDATED
Data mode	VFAINT	VFAINT	Number of optional ACIS chips dropped	0	0
Observation mode	POINTING	POINTING	On-chip summing requested	N	N
[deg] Pointing RA	221.462263	221.4931558289479	Subarray requested	CUSTOM	1/4
[deg] Pointing Dec	-44.860744	-44.87725760900989	Subarray start row	383	383
[deg] Pointing Roll	292.585856	292.7642781218599	Subarray row count	256	256
[mm] SIM focus pos	-0.684267	-0.6828225247311905	Alternating exposures requested	N	N
[mm] SIM defocus	0	0.001444936568705701	[s] Primary exposure time	0.000000	0.9
[mm] SIM translation stage pos	-190.132523	-190.1400660498719			
[mm] SIM translation stage offset	0	0.00754346686406393			
[s] Observation start time (MET)	77052762.184000	77052082.12544601			
Observation start date	2000-06-10T19:31:38	2000-06-10T19:21:22			
[s] Observation end time (MET)	77059662.184000	77060367.20075101			
Observation end date	2000-06-10T21:26:38	2000-06-10T21:39:27			
Read mode	TIMED	TIMED			

## 2.3 Aspect



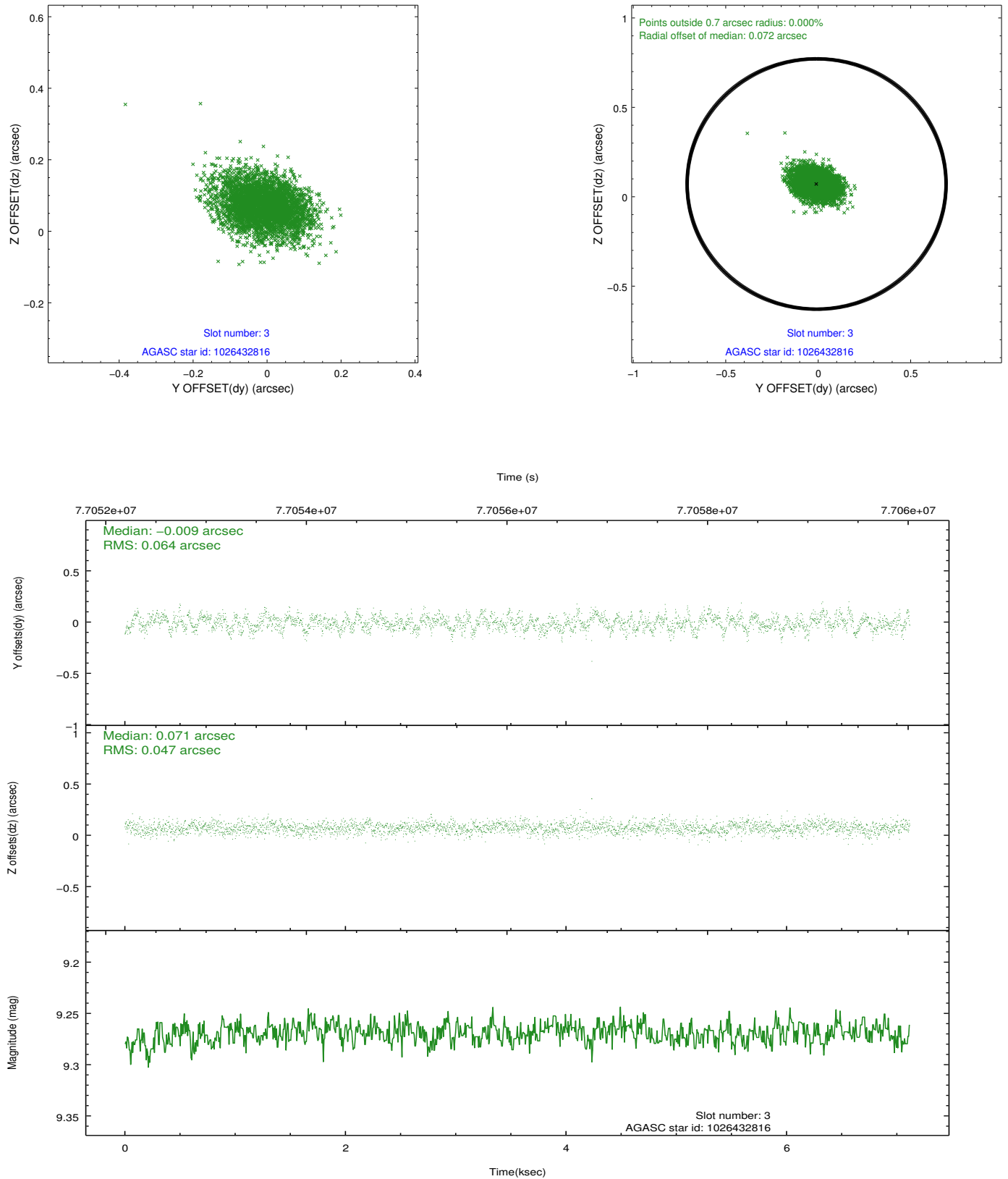


Slot Statistics

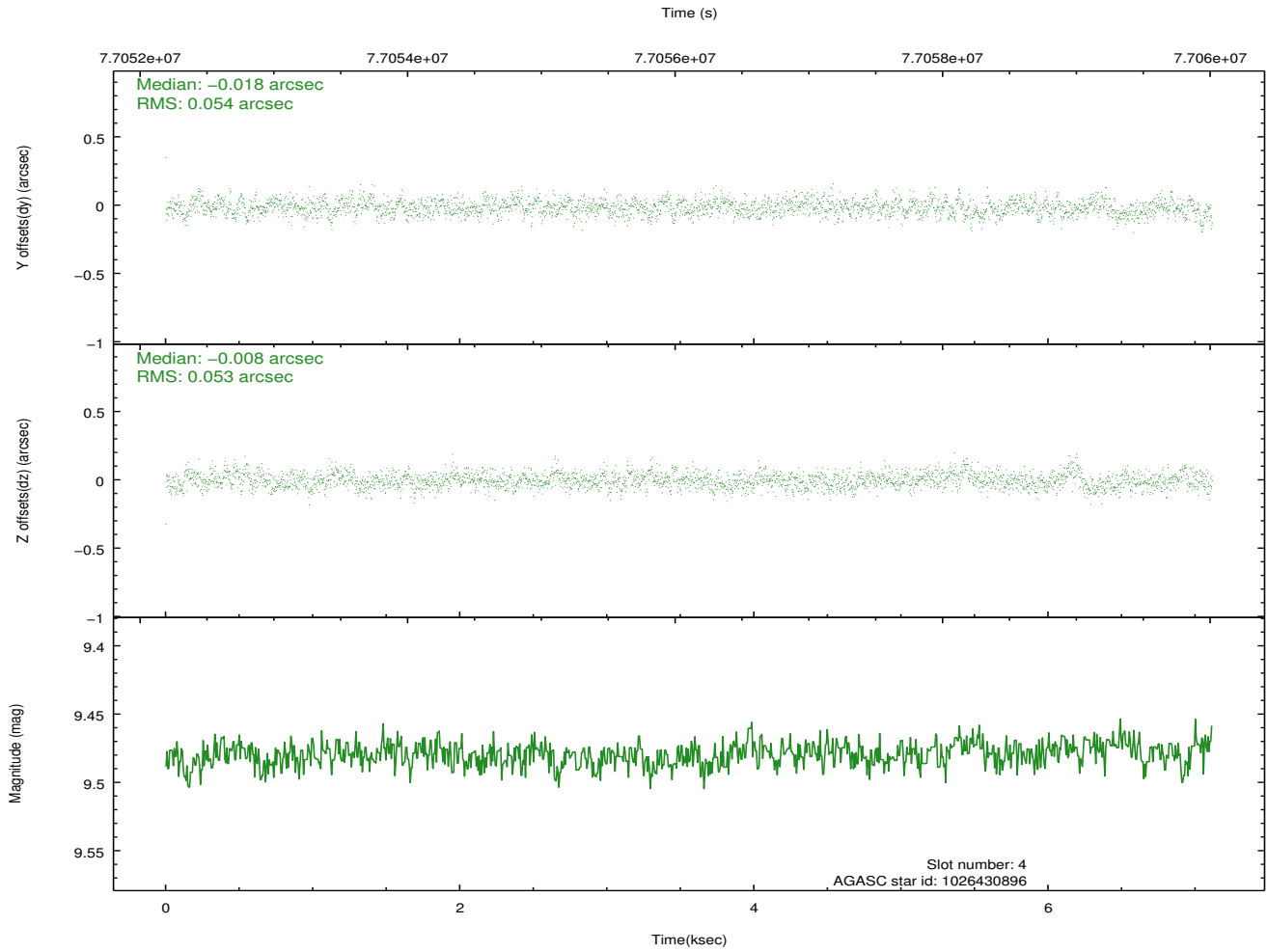
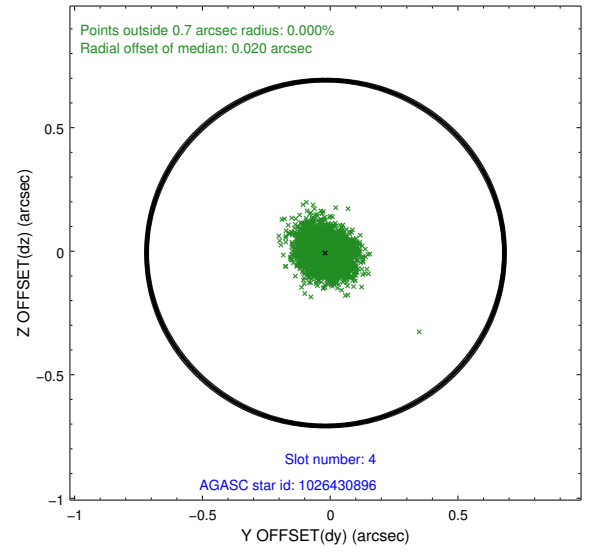
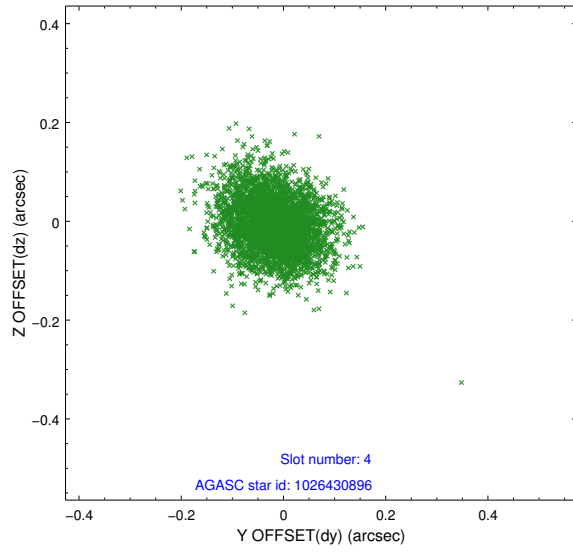
	status	id	mag	n_pts	med_dy	med_dz	drl
	FID	ACIS-S-2	7.11	1735	-0.026	-0.014	0.010
	FID	ACIS-S-4	7.20	1736	-0.004	0.016	0.010
	FID	ACIS-S-5	7.23	1736	-0.002	0.006	0.008
	GUIDE	1026432816	9.27	3472	-0.009	0.071	0.083
	GUIDE	1026430896	9.48	3469	-0.018	-0.008	0.082
	GUIDE	1085156056	9.67	3469	0.056	-0.038	0.102
	GUIDE	1026430640	9.52	3465	-0.029	-0.030	0.106
0.0000.0000.0000.0000000.0000000.000.00							

## 2.4 Star Slots

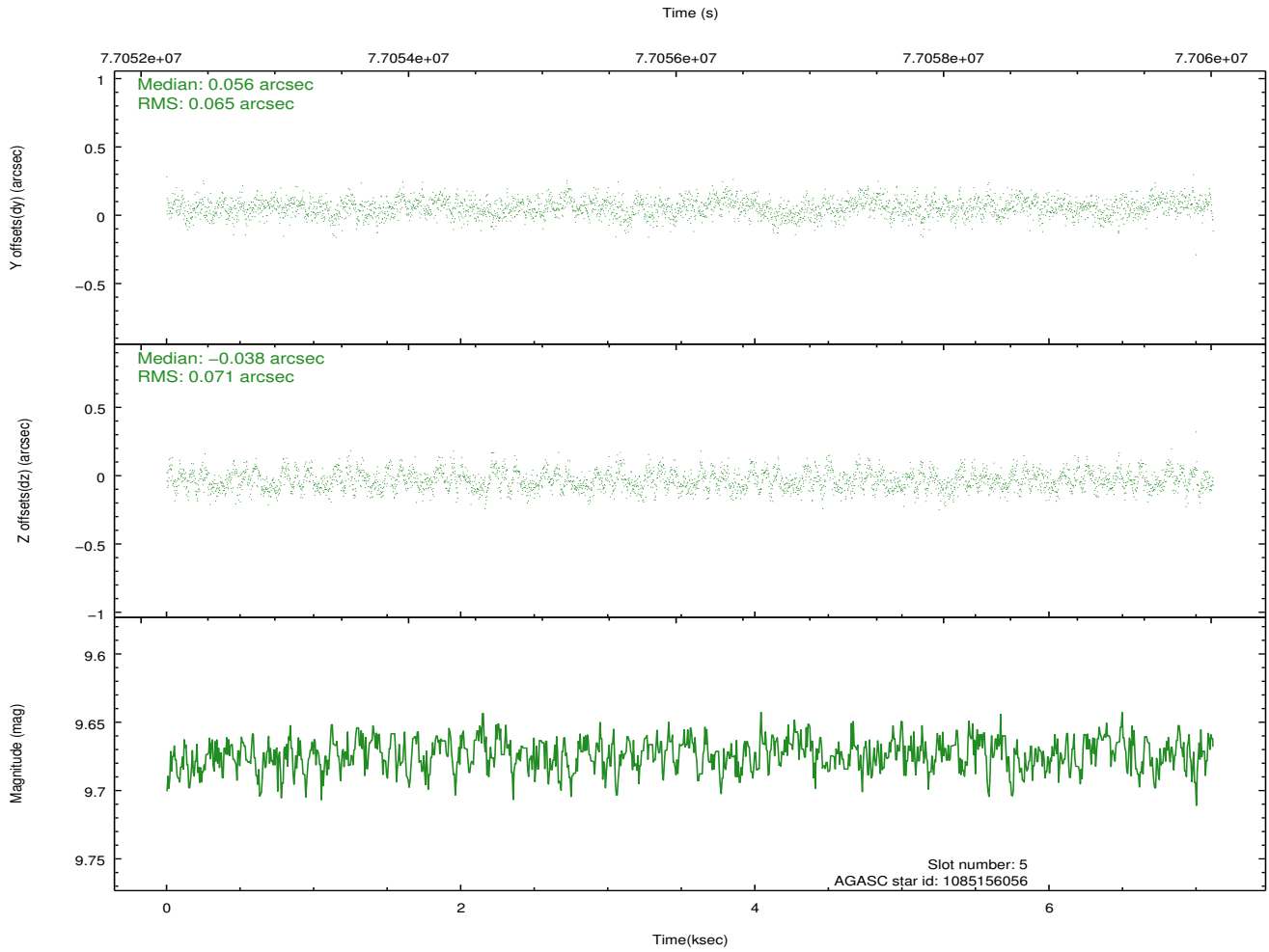
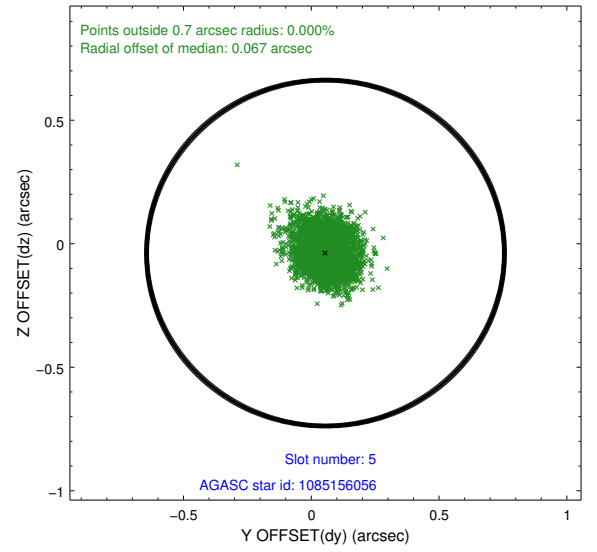
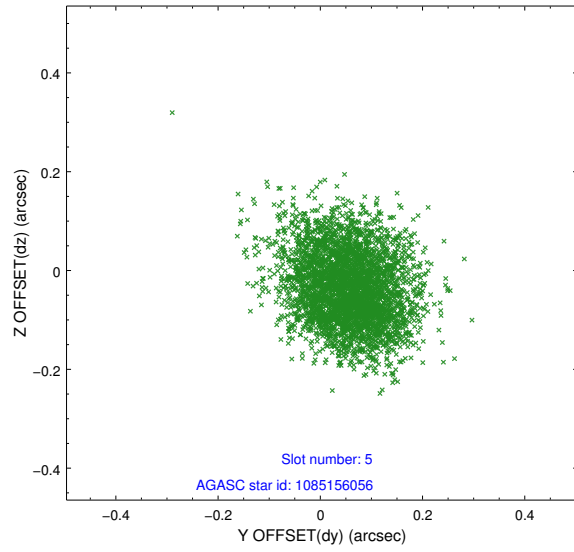
### 2.4.1 Slot 3



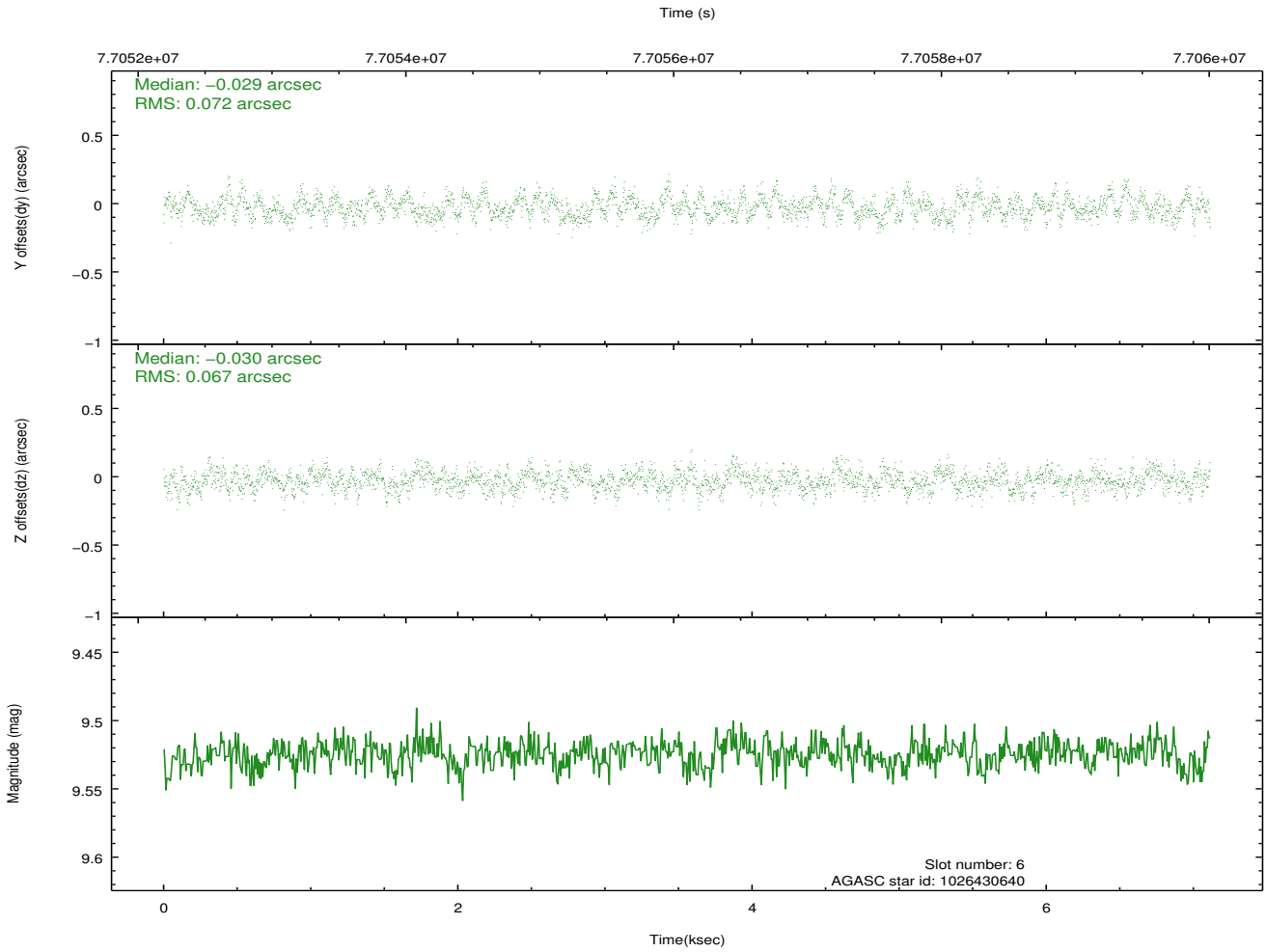
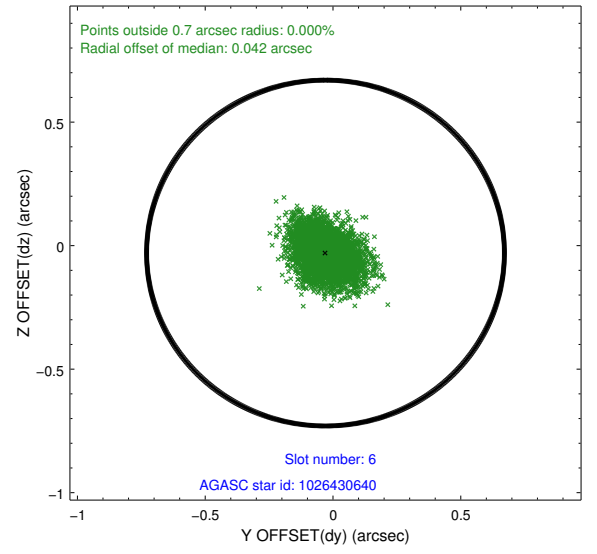
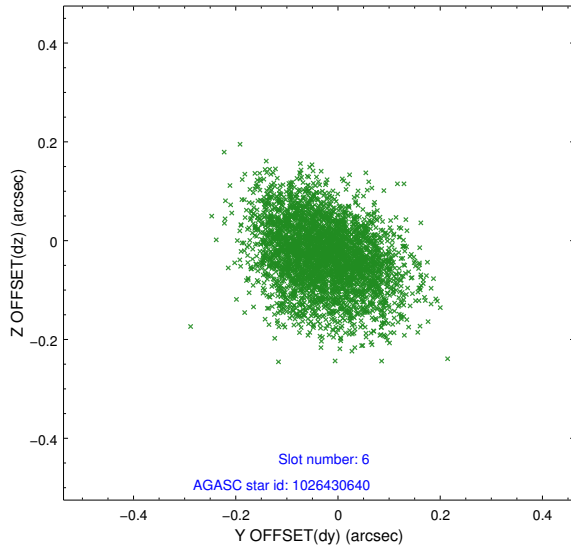
## 2.4.2 Slot 4



### 2.4.3 Slot 5



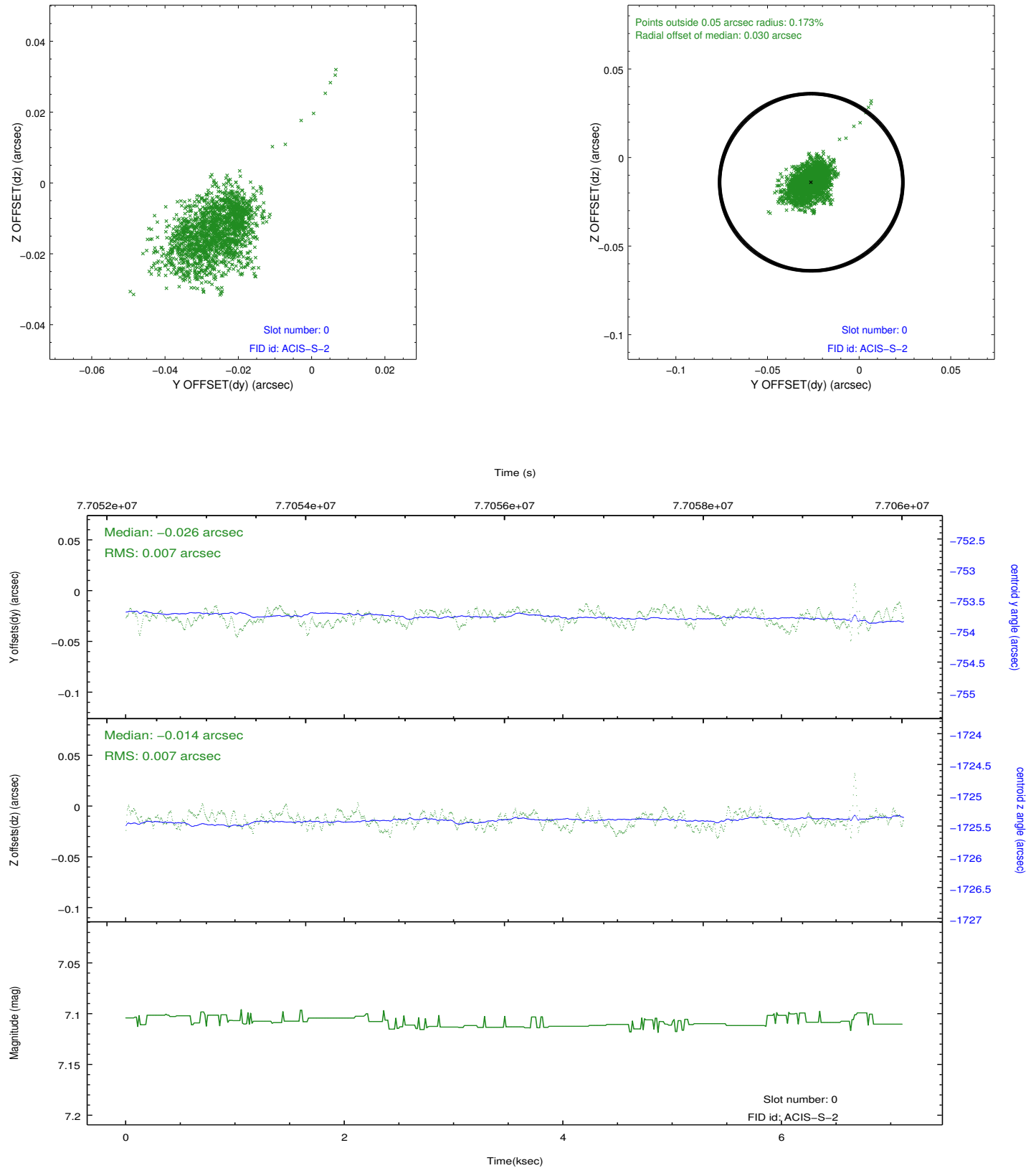
## 2.4.4 Slot 6



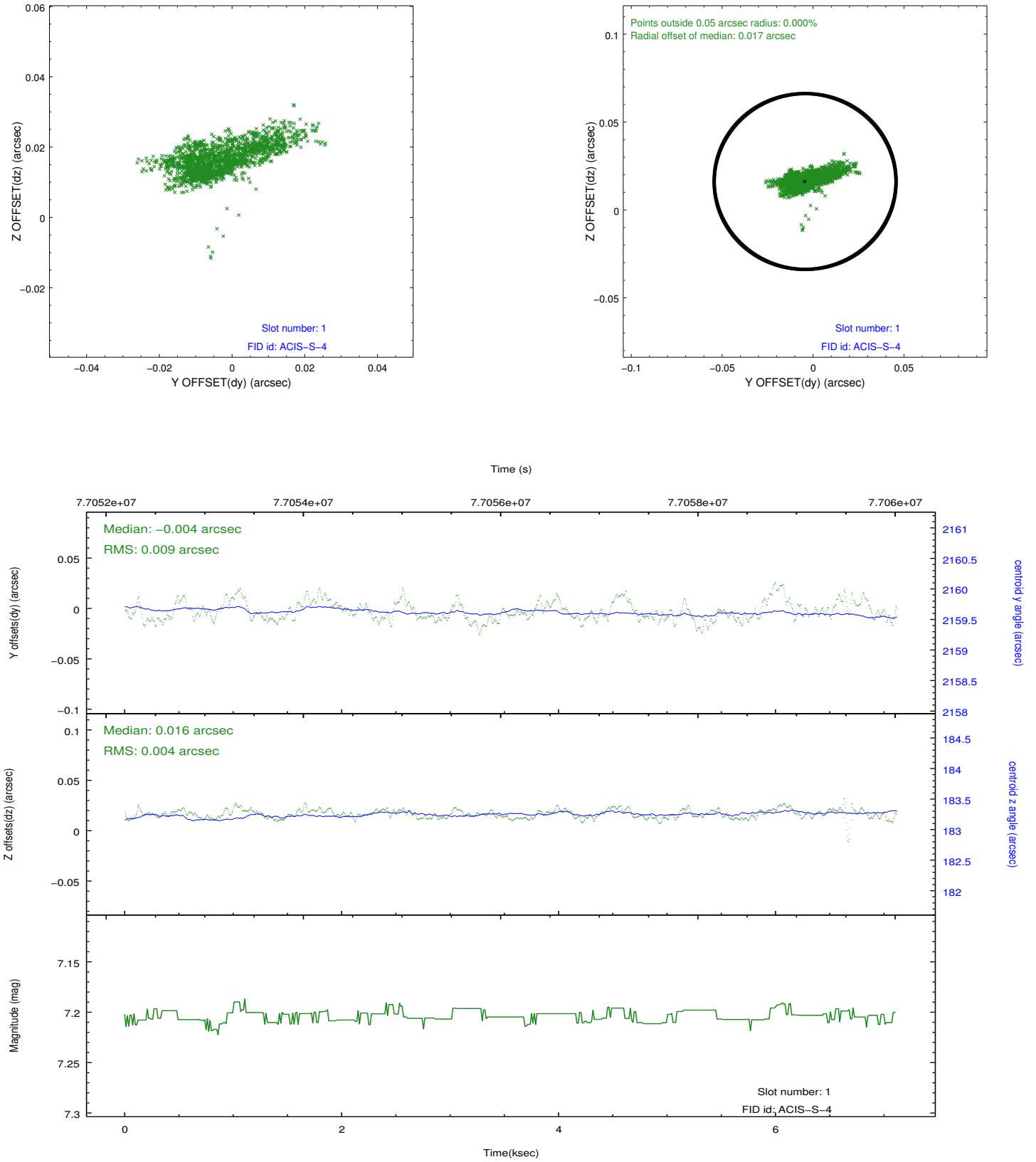


## 2.5 FID Slots

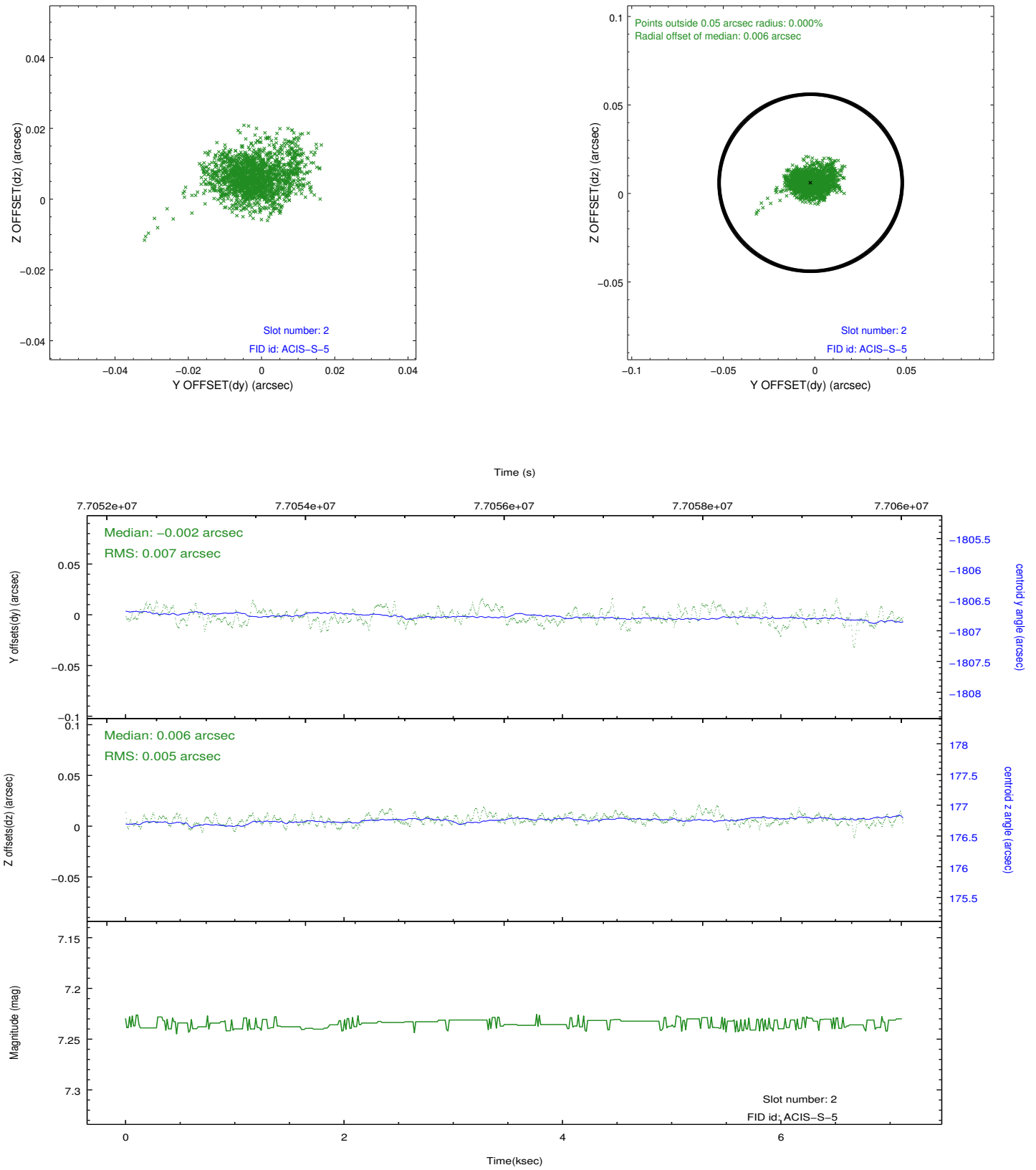
### 2.5.1 Slot 0



## 2.5.2 Slot 1



### 2.5.3 Slot 2



## A Summary

### A.1 Status

V&V Scientist	Jen Lauer
V&V Date (YYYY-MM-DD)	2012.08.31
V&V Edition	1
V&V Disposition and Status	OK
V&V Charge Time	6.584

### A.2 Comments

Monitor star used.