

V&V Reference Report

L2 ASCDS Version : 7.6.7.1

Observation 6257 - L2 Version 002
Chandra X-Ray Center

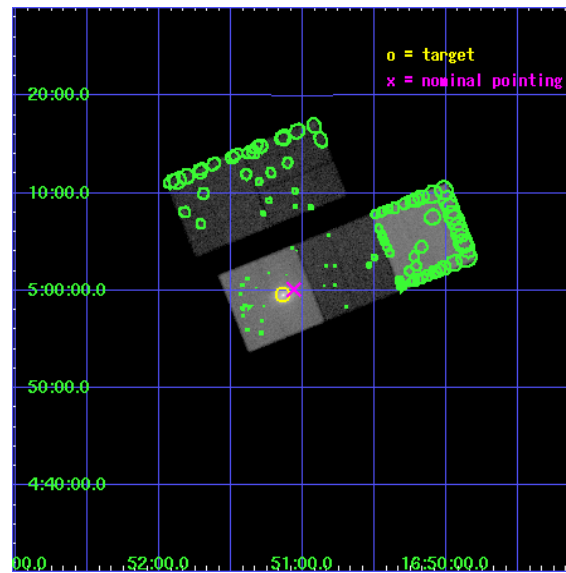
L2 Processing Date : Mar 8 2006

Contents

1	Front	2
2	OBI	3
2.1	OBI	3
2.1.1	Images	3
2.1.2	Bias	3
2.1.3	Parameters	4
2.1.4	Events	4
2.2	Compared Parameters	5
2.3	Aspect	6
2.4	Star Slots	9
2.4.1	Slot 3	9
2.4.2	Slot 4	10
2.4.3	Slot 5	11
2.4.4	Slot 6	12
2.4.5	Slot 7	13
2.5	FID Slots	14
2.5.1	Slot 0	14
2.5.2	Slot 1	15
2.5.3	Slot 2	16
3	Point Sources	17
A	Summary	18
A.1	Status	18
A.2	Comments	18

1 Front

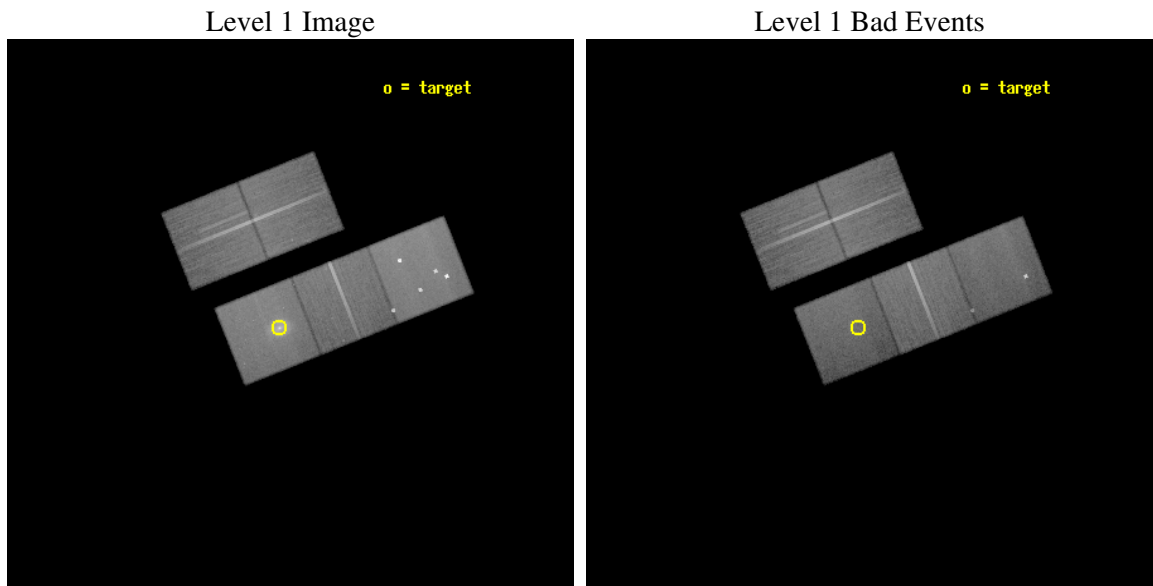
seq_num	800509
obs_id	6257
title	The Outburst in Hercules A
observer	Dr Paul Nulsen
object	Hercules A
dtcycle	0
cycle	P
ra_targ	252.784167
dec_targ	4.992722
ra_nom	252.76553521834
dec_nom	5.0019887749907
roll_nom	158.23175798009
revision	2
ontime	50173.49990353
livetime	49517.946190097
ontime2	50167.218002617
ontime3	50173.49990353
ontime5	50173.49990353
ontime6	50173.49990353
ontime7	50173.49990353
l2events	472695



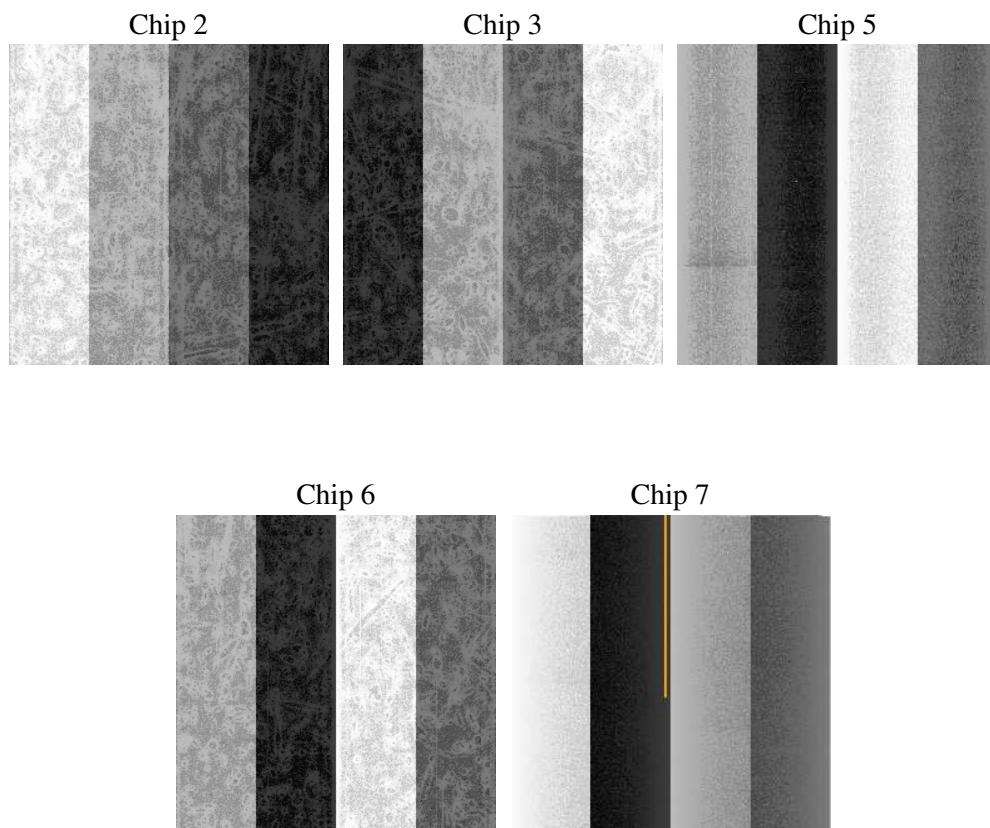
2 OBI

2.1 OBI

2.1.1 Images



2.1.2 Bias



2.1.3 Parameters

obi_num	0
ascdsver	7.6.7.1
caldbver	3.2.1
date	2006-03-08T11:01:50
revision	2

sched_exp_time	50000.000000
ontime	50177.685557276
ontime2	50171.403636426
ontime3	50177.685557276
ontime5	50177.685557276
ontime6	50177.685557276
ontime7	50177.685557276
l1events	1824859

2.1.4 Events

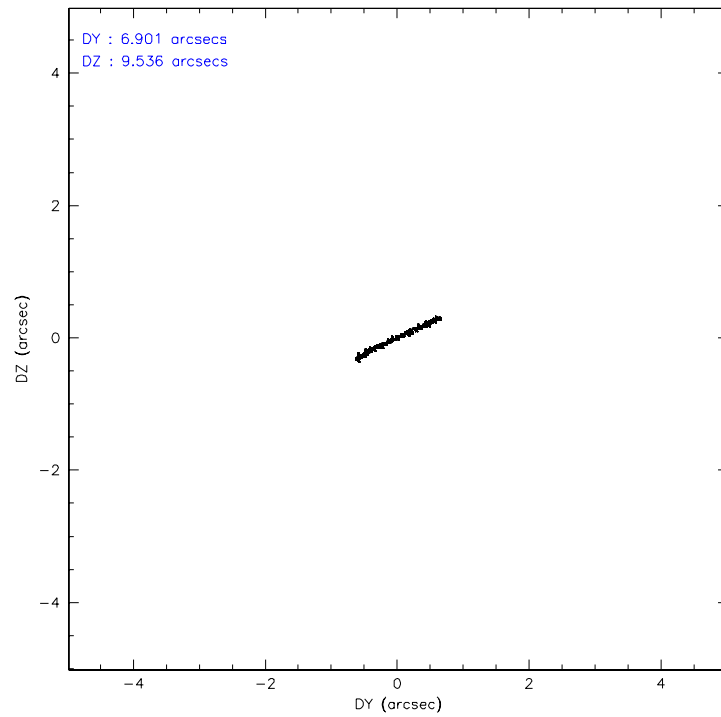
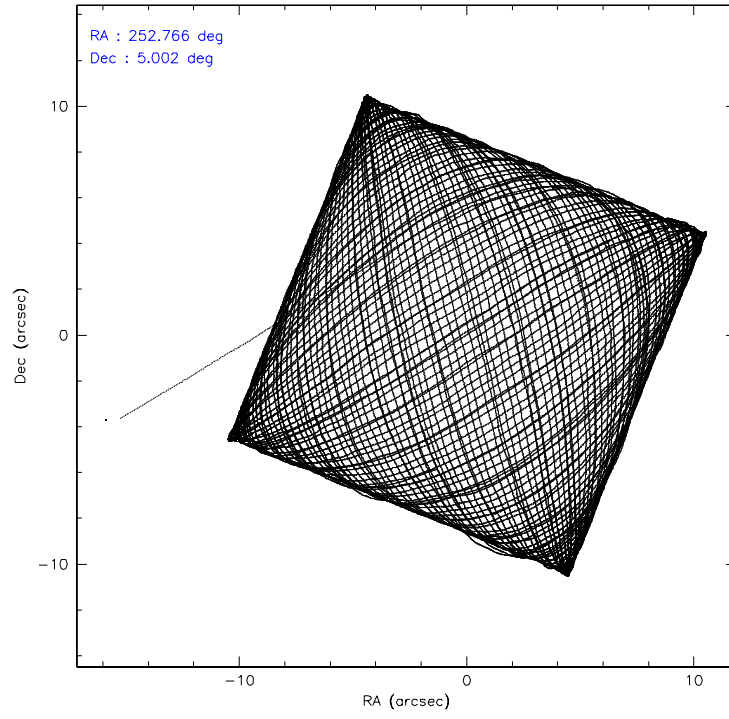
	ccd 2	ccd 3	ccd 5	ccd 6	ccd 7
level 1 events	321010	308479	471389	322711	401270
rejected events	288613	278039	229212	286278	204978
rejected %	89%	90%	48%	88%	51%

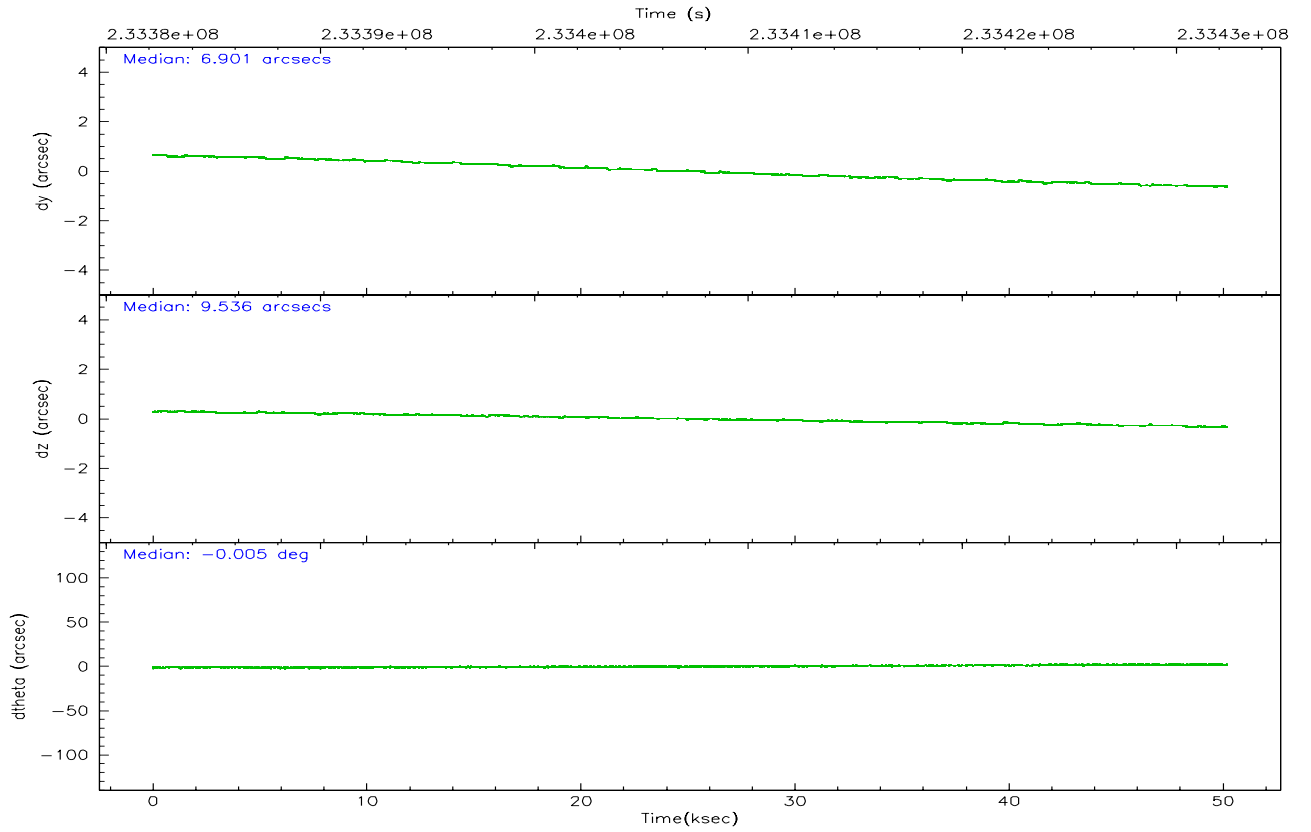
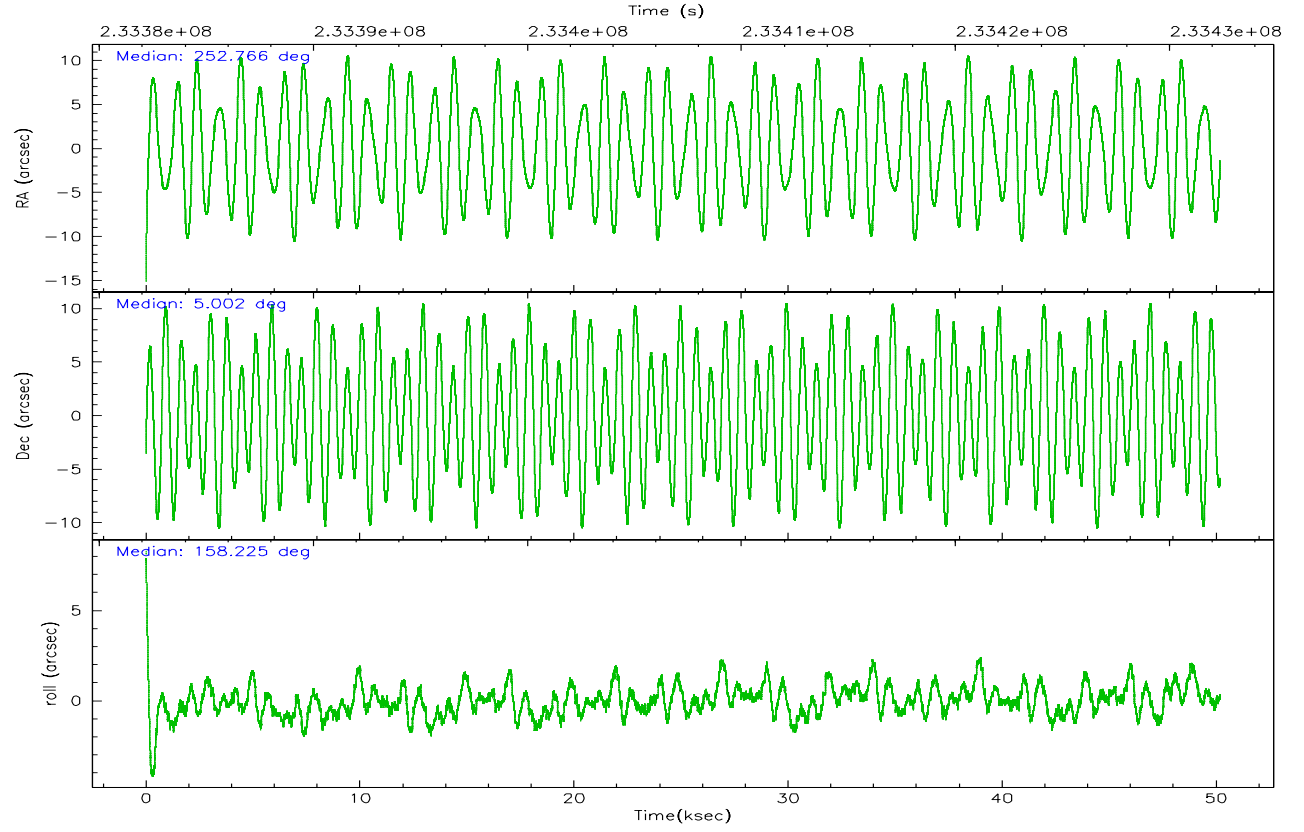
	ccd 2	ccd 3	ccd 5	ccd 6	ccd 7
grade 0 events	12804	11544	41382	14795	23377
	3%	3%	8%	4%	5%
grade 1 events	166	147	5866	163	188
	0%	0%	1%	0%	0%
grade 2 events	7121	6325	72984	7267	50772
	2%	2%	15%	2%	12%
grade 3 events	3419	3371	5762	3655	13971
	1%	1%	1%	1%	3%
grade 4 events	3456	3286	5922	3703	13603
	1%	1%	1%	1%	3%
grade 5 events	10318	12364	22991	12761	26650
	3%	4%	4%	3%	6%
grade 6 events	5600	5915	116146	7014	94576
	1%	1%	24%	2%	23%
grade 7 events	278126	265527	200336	273353	178133
	86%	86%	42%	84%	44%

2.2 Compared Parameters

Parameter	Planned	Actual	Parameter	Planned	Actual
Instrument	ACIS	ACIS	Obspar format version number	6	6
Detector	ACIS-23567	ACIS-23567	Obspar file type	PREDICTED	ACTUAL
Grating	NONE	NONE	Obspar update status	NONE	UPDATED
Data mode	VFAINT	VFAINT	On-chip summing requested	N	N
Observation mode	POINTING	POINTING	Subarray requested	NONE	NONE
Pointing RA	252.792522	252.7655352183392	Alternating exposures requested	N	N
Pointing Dec	5.006261	5.001988774990663	Primary exposure time	0.000000	3.1
Pointing Roll	158.072773	158.2317579800884			
SIM focus pos (mm)	-0.684267	-0.6828225247311905			
SIM defocus (mm)	0	0.001444936568705701			
SIM translation stage pos (mm)	-190.132523	-190.1400660498719			
SIM translation stage offset (mm)	0	0.00754346686406393			
Observation start time	233382369.184000	233381374.02673			
Observation start date	2005-05-25T04:25:05	2005-05-25T04:09:34			
Observation end time	233432369.184000	233433865.81662			
Observation end date	2005-05-25T18:18:25	2005-05-25T18:44:25			
Read mode	TIMED	TIMED			

2.3 Aspect



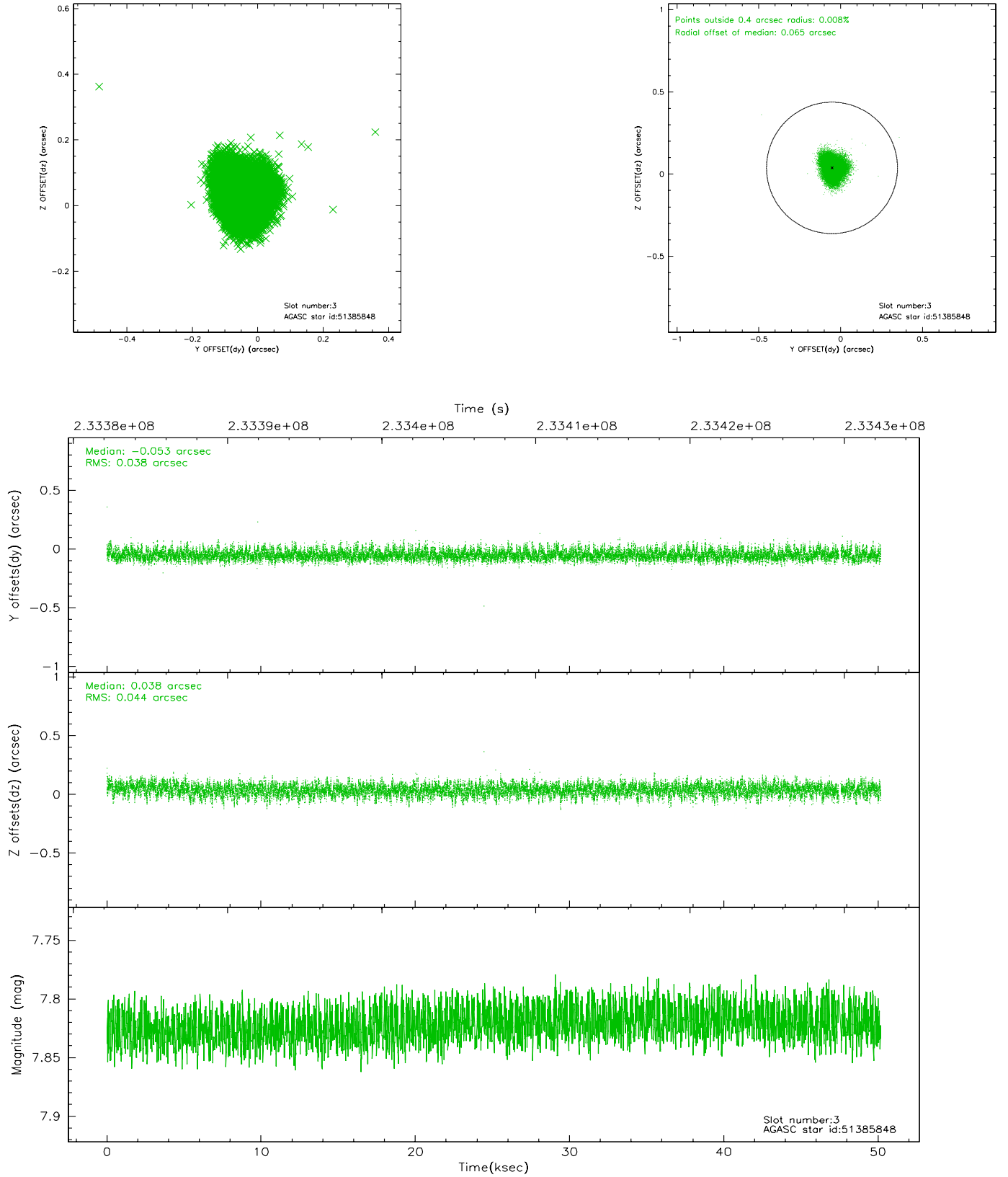


Slot Statistics

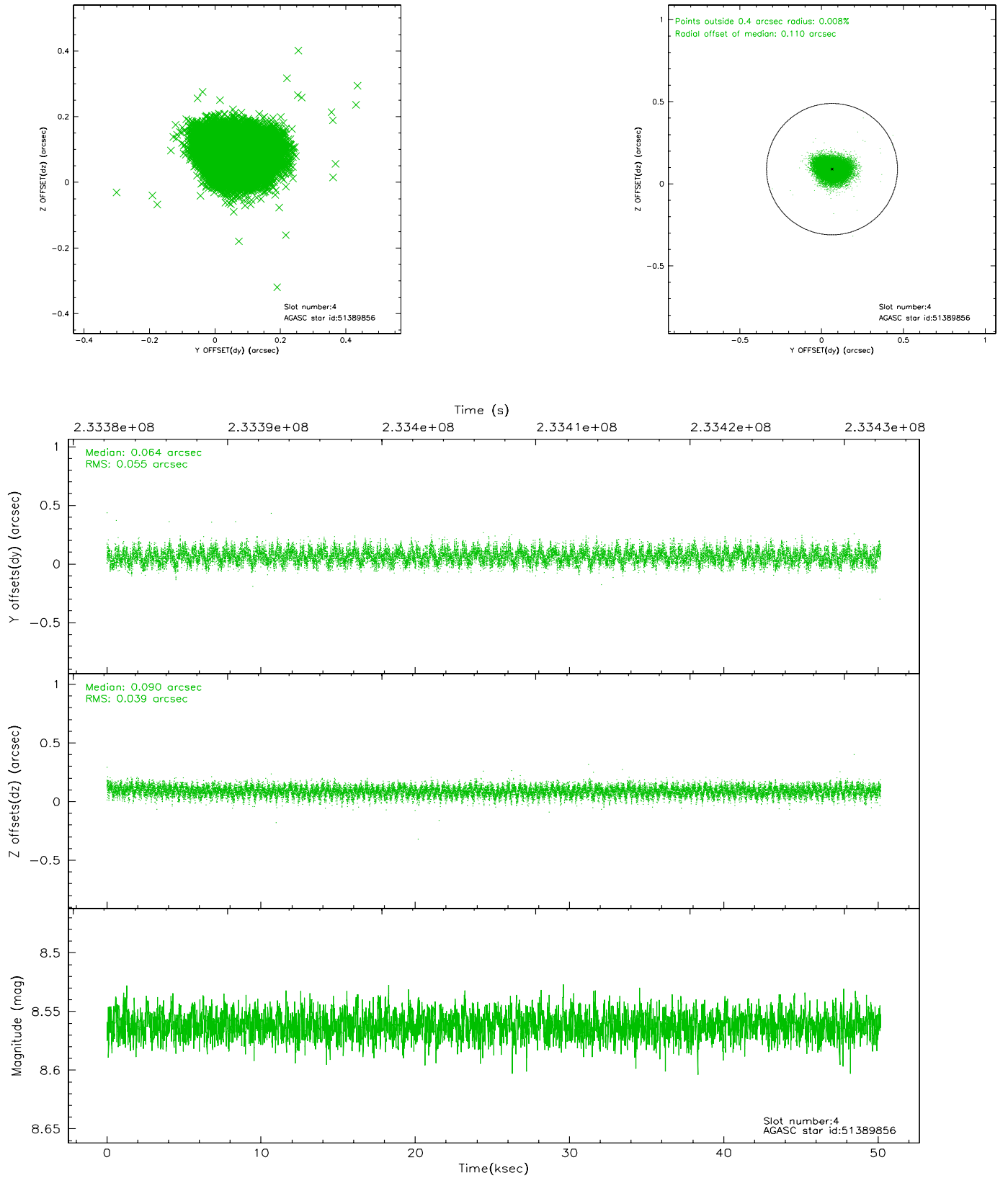
slot	status	id	mag	n_pts	med_dy	med_dz	dr1	dr2	ra	dec	mean_y	mean_z
0	FID	ACIS-S-2	7.10	12240	-0.046	-0.018	0.008	0.021	0.000000	0.000000	-759.67	-1730.79
1	FID	ACIS-S-4	7.21	12240	0.063	0.027	0.009	0.017	0.000000	0.000000	2153.69	177.79
2	FID	ACIS-S-5	7.23	12242	-0.049	-0.001	0.010	0.016	0.000000	0.000000	-1812.57	171.36
3	GUIDE	51385848	7.82	24399	-0.053	0.038	0.062	0.100	252.745605	5.488999	805.36	-1549.01
4	GUIDE	51389856	8.56	24468	0.064	0.090	0.072	0.115	252.375344	5.365072	1870.07	-639.92
5	GUIDE	51390960	7.67	24478	-0.044	-0.001	0.053	0.084	253.089716	4.810839	-1251.32	254.21
6	GUIDE	51398584	8.23	24478	0.095	-0.064	0.067	0.107	252.688107	4.451511	-398.08	1992.57
7	GUIDE	51399896	8.26	24471	-0.064	-0.061	0.057	0.095	251.967371	4.715817	2356.45	2074.41

2.4 Star Slots

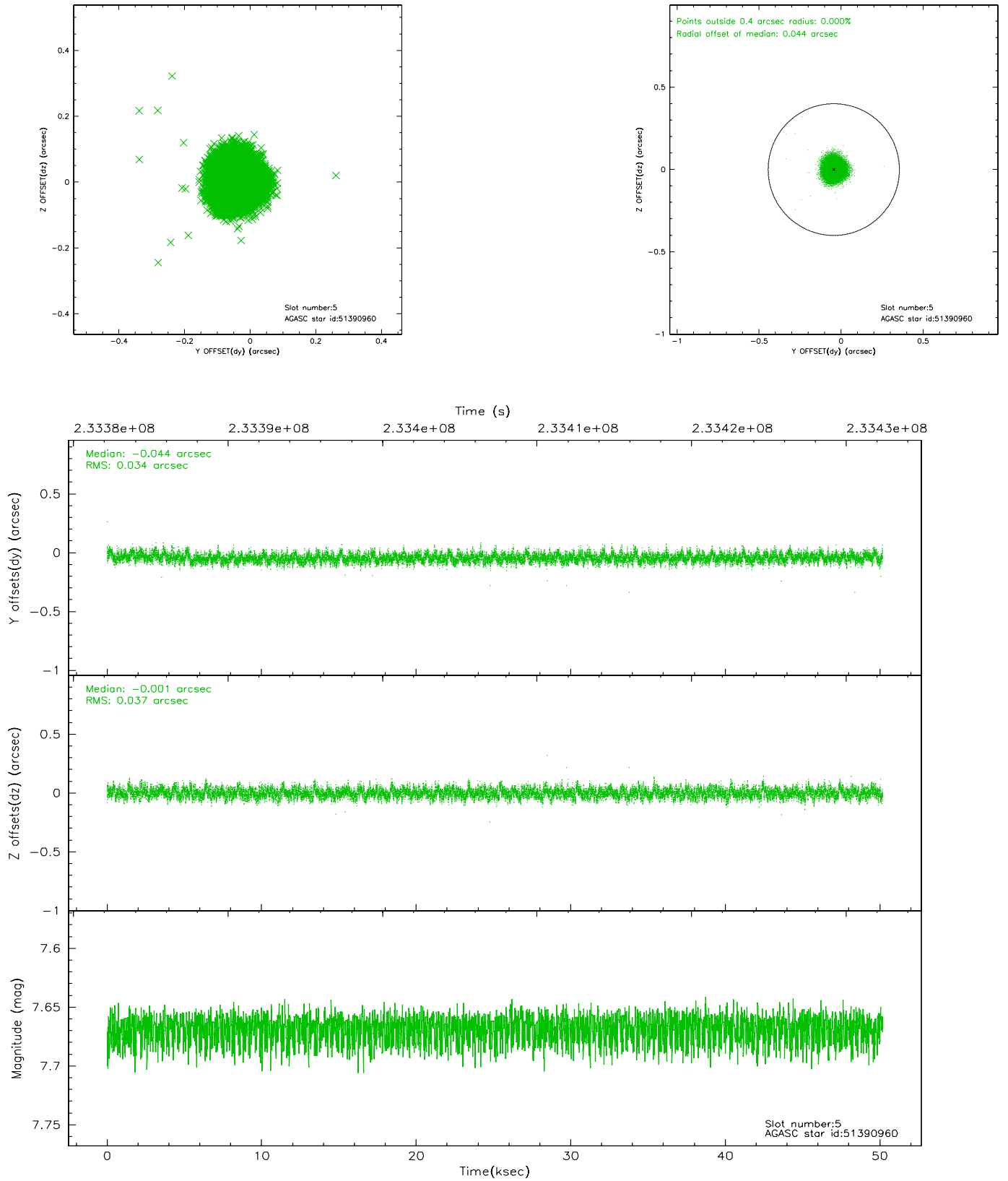
2.4.1 Slot 3



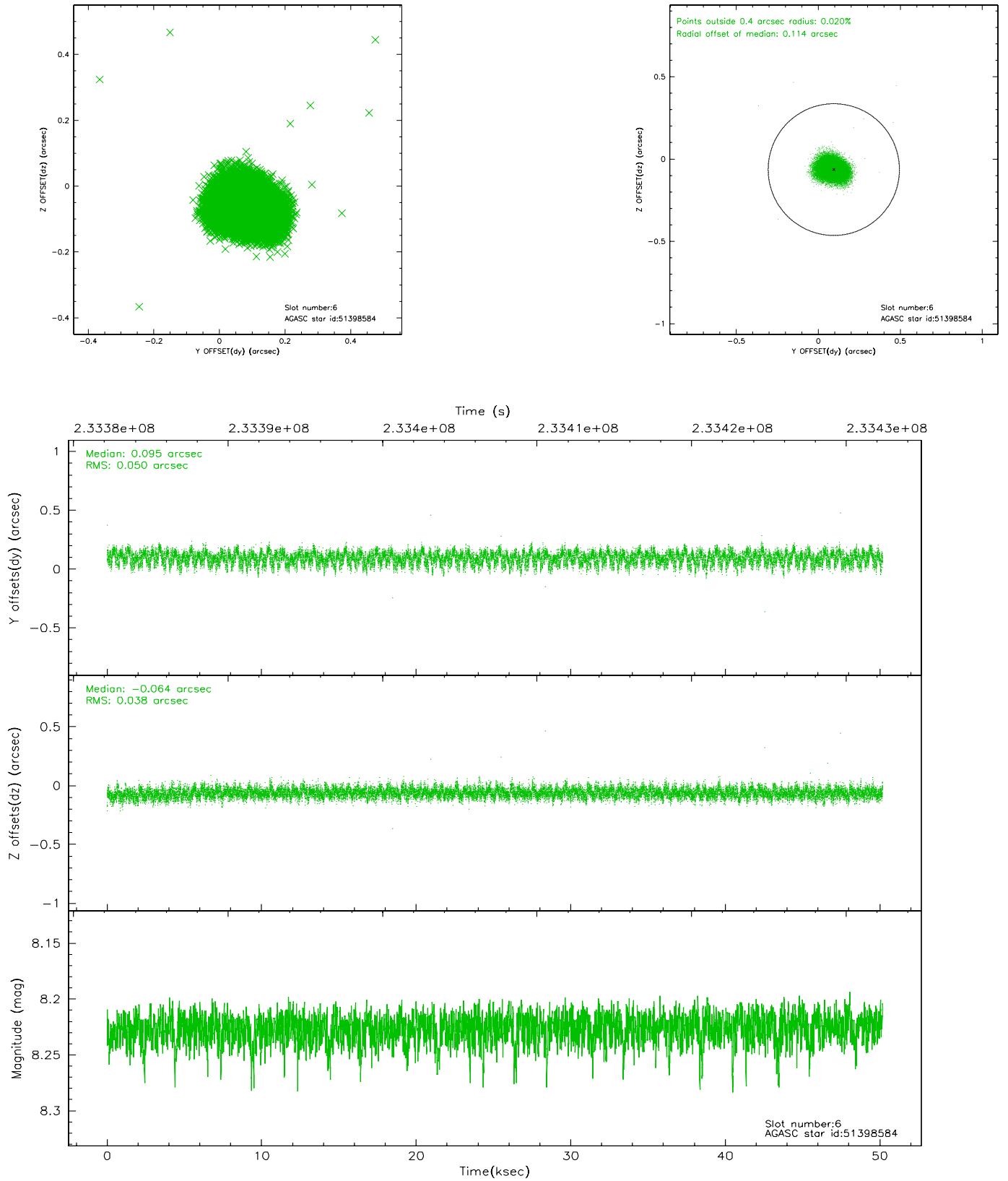
2.4.2 Slot 4



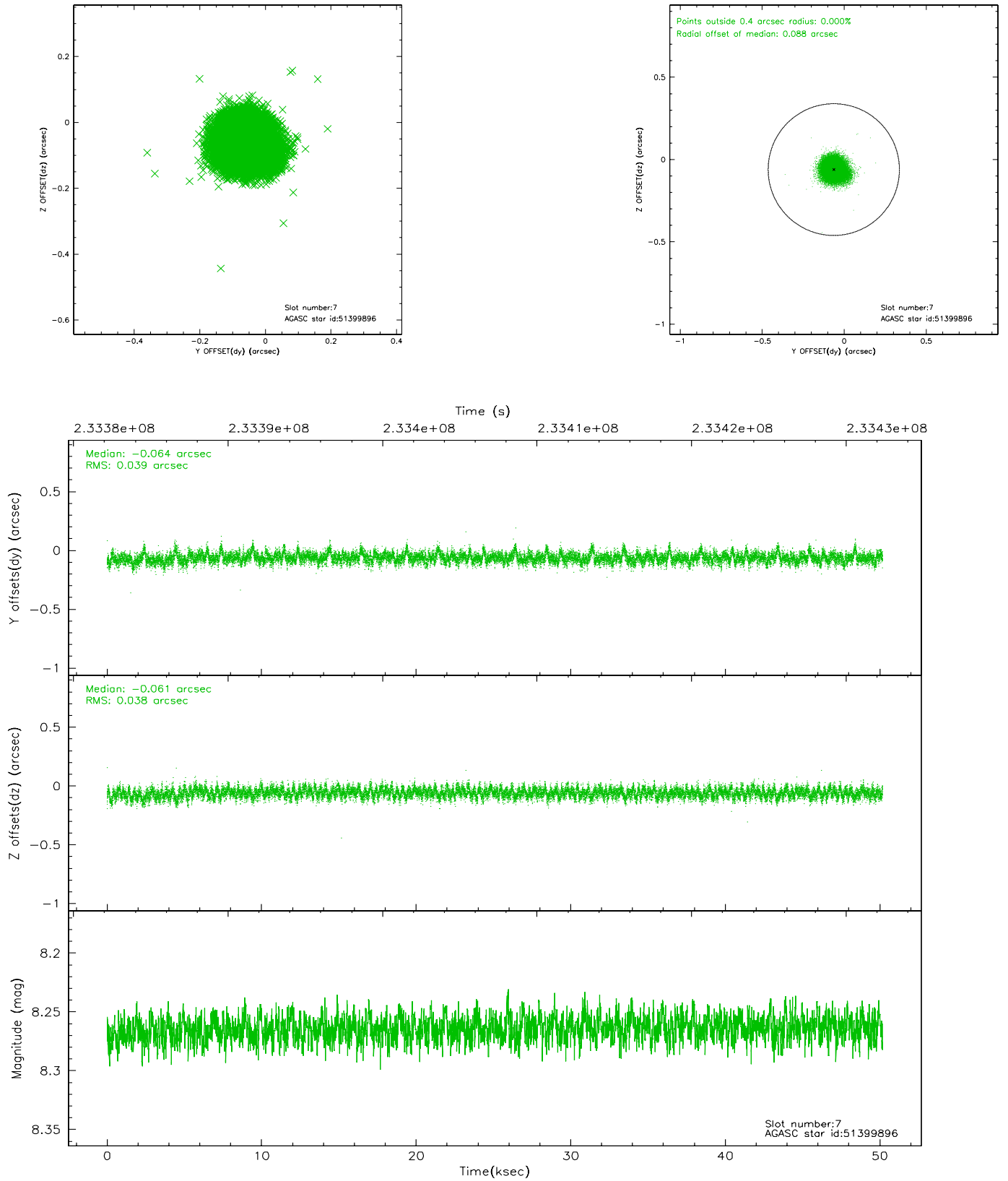
2.4.3 Slot 5



2.4.4 Slot 6

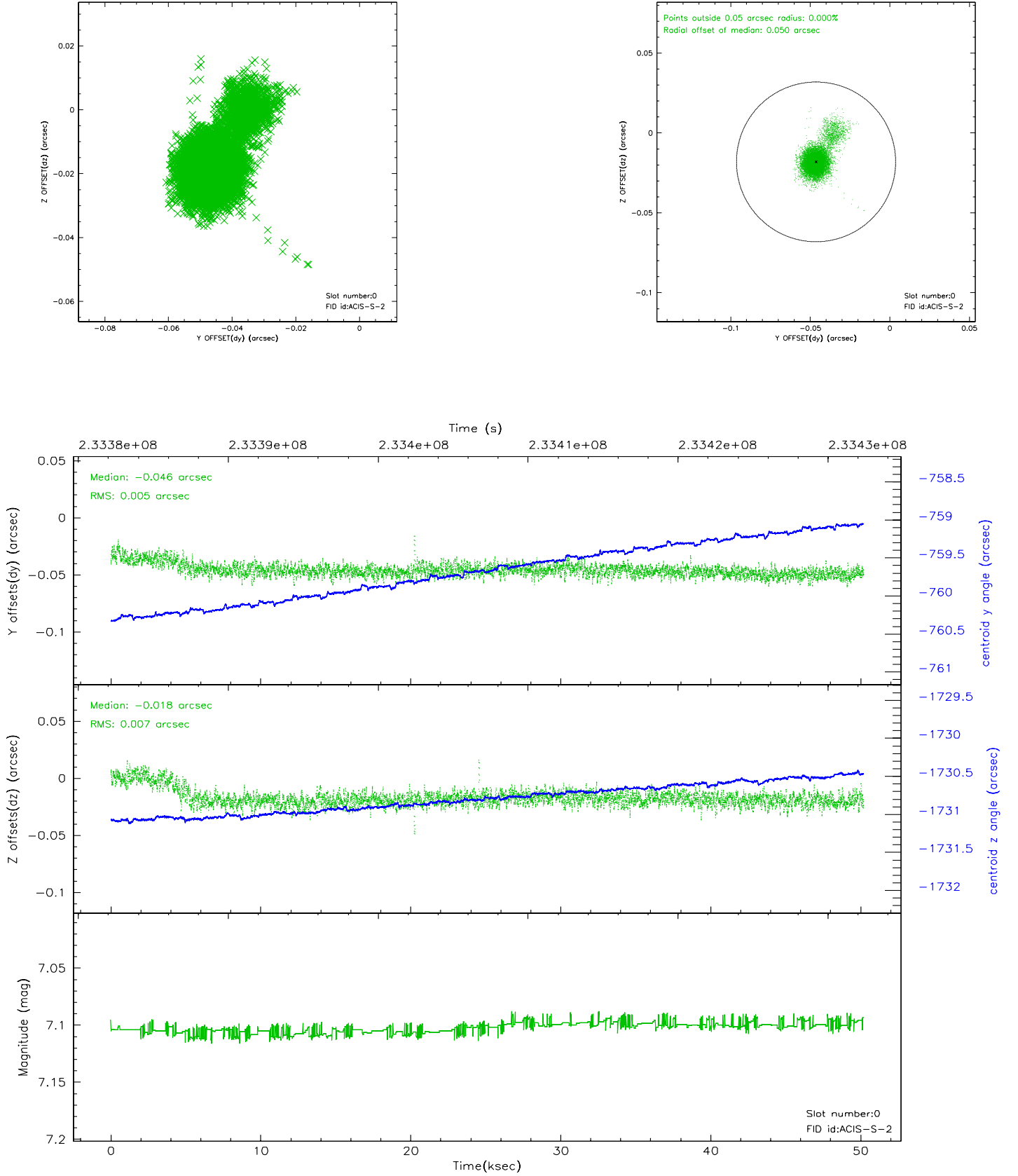


2.4.5 Slot 7

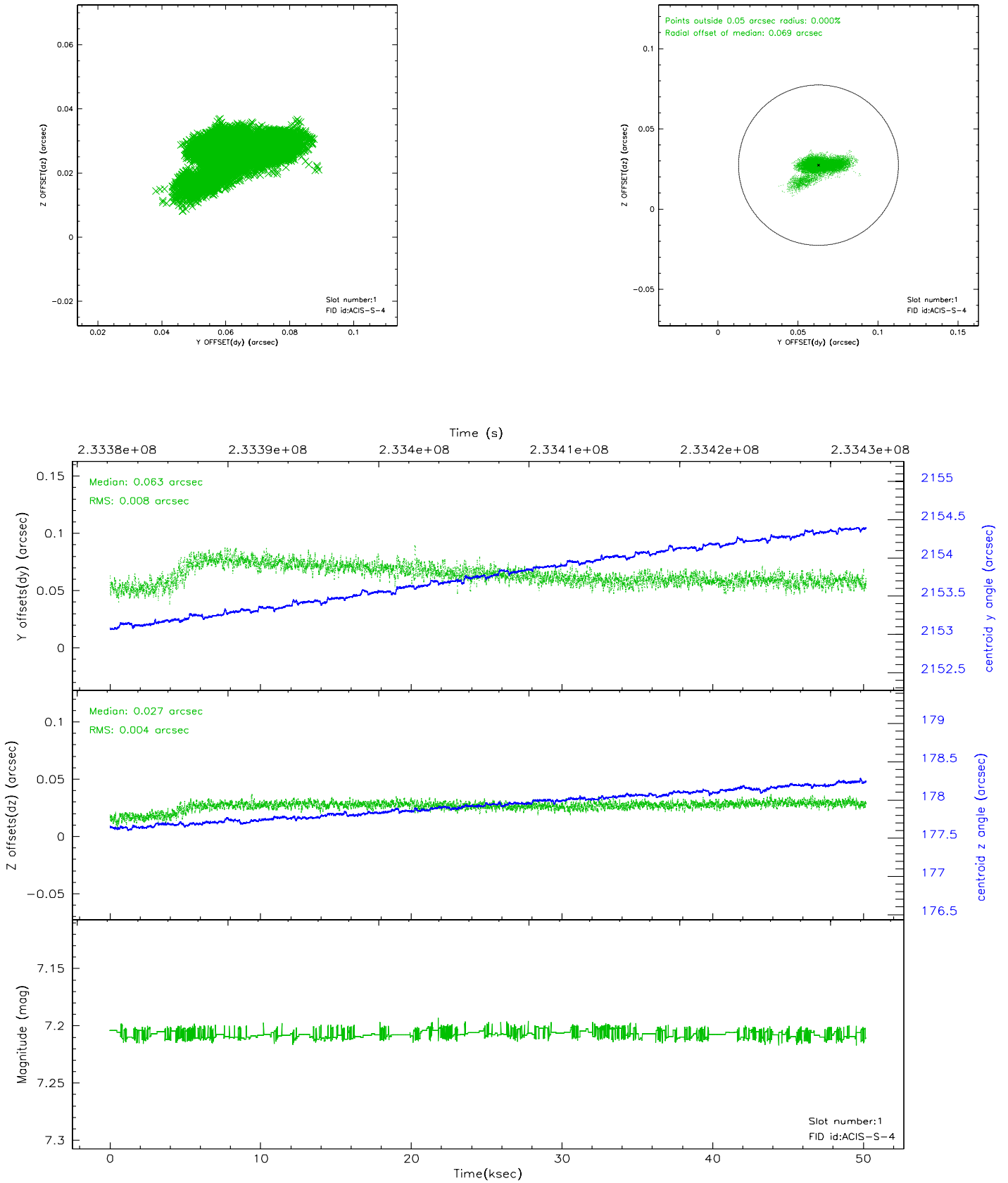


2.5 FID Slots

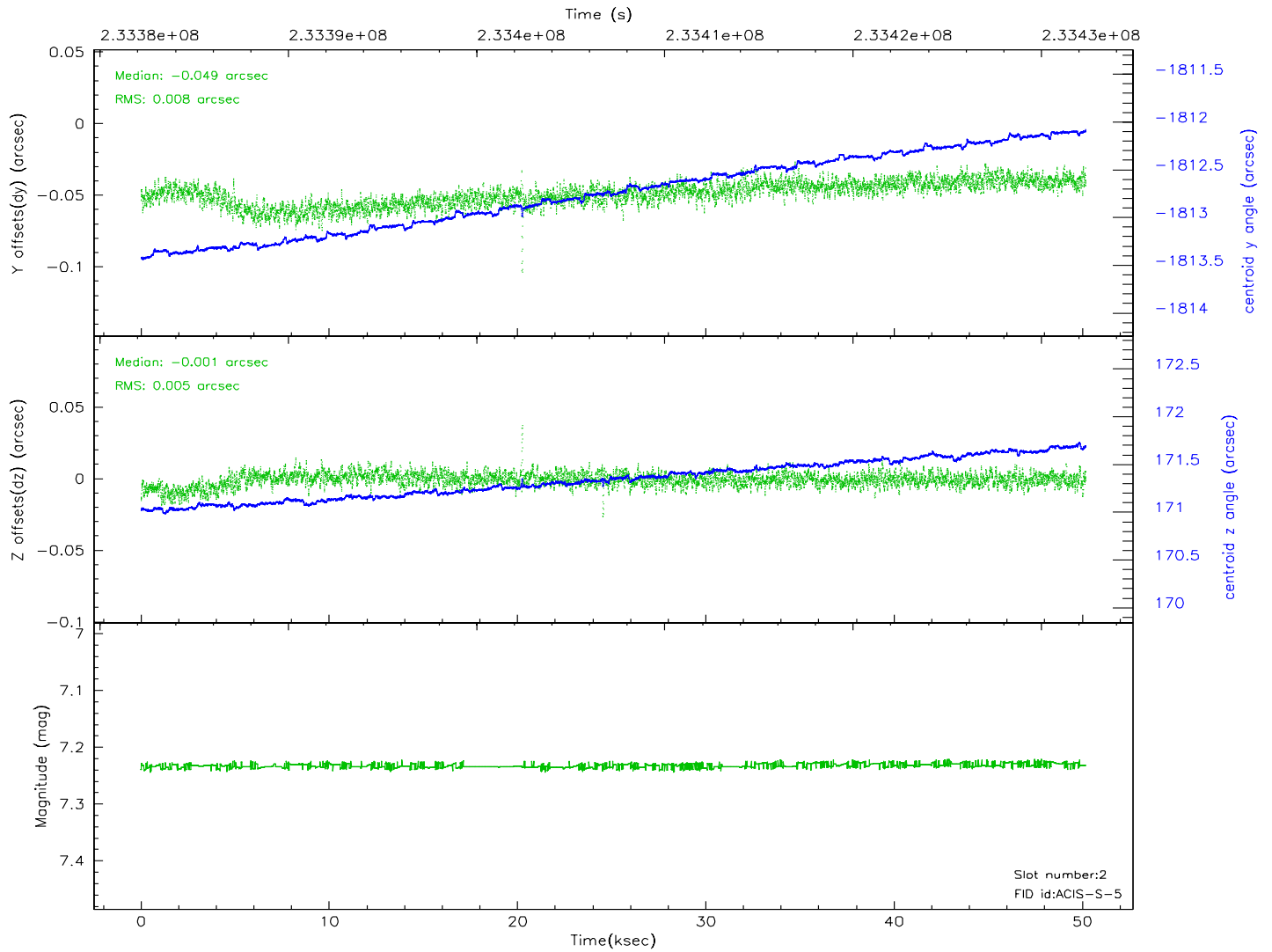
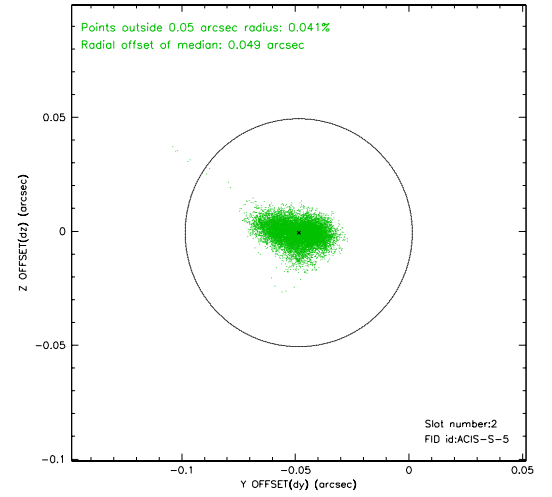
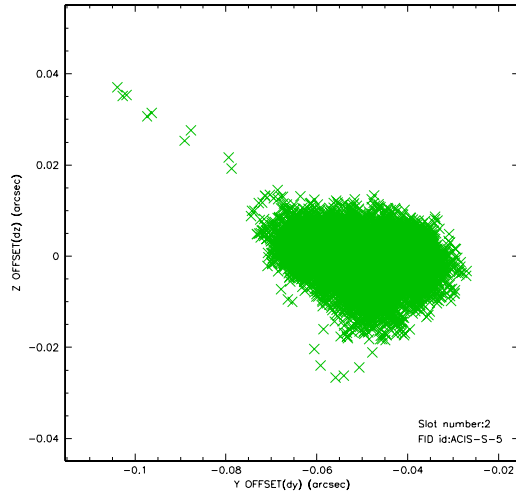
2.5.1 Slot 0



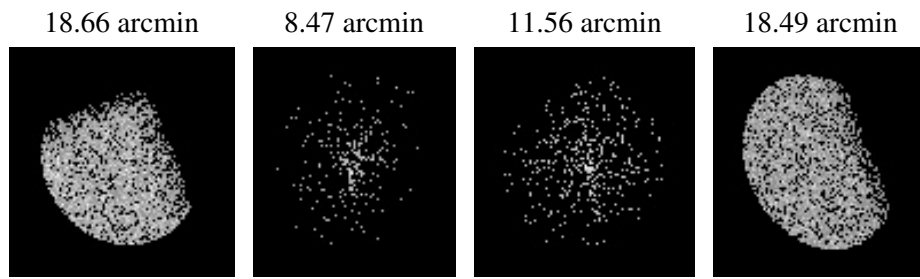
2.5.2 Slot 1



2.5.3 Slot 2



3 Point Sources



A Summary

A.1 Status

V&V Scientist	Jen Lauer
V&V Date (YYYY-MM-DD)	2006.03.08
V&V Edition	1
V&V Disposition and Status	OK
V&V Charge Time	50.17349

A.2 Comments

c