

# V&V Reference Report

## L2 ASCDS Version : 8.1.1

Observation 62287 - L2 Version 4  
Chandra X-Ray Center

L2 Processing Date : Nov 25 2009

## Contents

<b>1</b>	<b>Front</b>	<b>2</b>
<b>2</b>	<b>OBI</b>	<b>3</b>
2.1	OBI . . . . .	3
2.1.1	Images . . . . .	3
2.1.2	Bias . . . . .	3
2.1.3	Parameters . . . . .	4
2.1.4	Events . . . . .	4
2.2	Compared Parameters . . . . .	5
2.3	Star Slots . . . . .	6
2.4	FID Slots . . . . .	6
<b>A</b>	<b>Summary</b>	<b>7</b>
A.1	Status . . . . .	7
A.2	Comments . . . . .	7

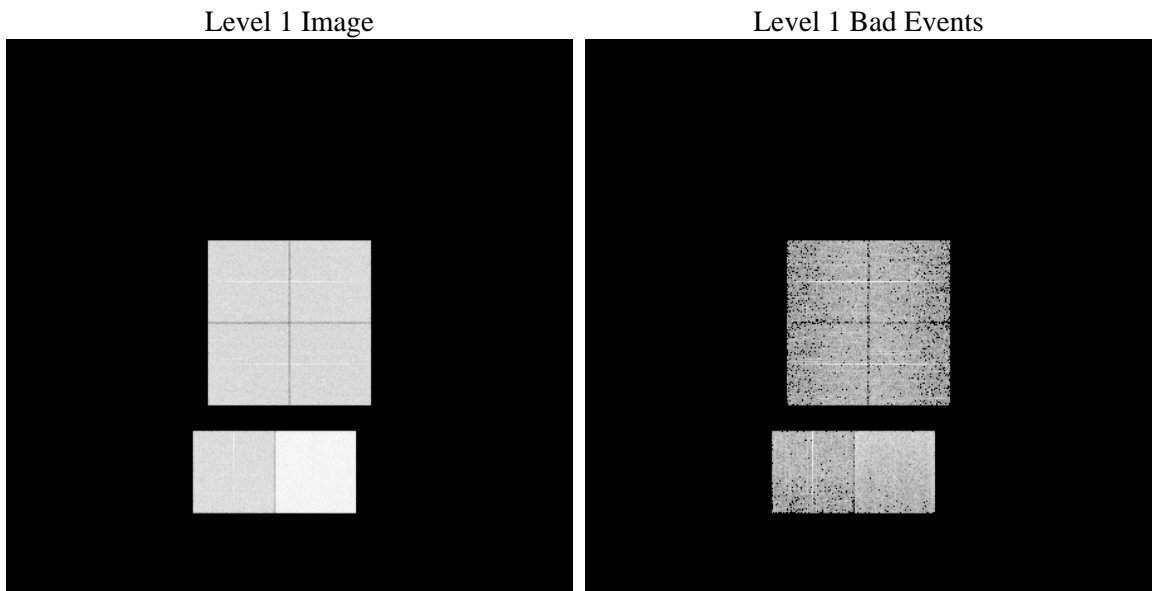
# 1 Front

seq_num	&#160	Sequence number
obs_id	62287	Observation id
title	ACIS-012367 diagnostics	Proposal title
observer	CHANDRA engineering request/realtime commanding	Principal investig
object	&#160	Source name
dtcycle	0	&#160
cycle	P	events from which exps? Prim/Second/Both
ra_targ	0.0	Observer's specified target RA
dec_targ	0.0	Observer's specified target Dec
ra_nom	189.98441562728	Nominal RA
dec_nom	-33.974421058788	Nominal Dec
roll_nom	85.529687785398	Nominal Roll
revision	4	Processing version of data
ontime	3479.7402135283	Sum of GTIs [s]
livetime	3435.6776476966	Livetime [s]
ontime0	1373.042800419	Sum of GTIs [s]
ontime1	1405.4122004062	Sum of GTIs [s]
ontime2	1338.5482458249	Sum of GTIs [s]
ontime3	1322.3429560065	Sum of GTIs [s]
ontime6	1483.1150106937	Sum of GTIs [s]
ontime7	3479.7402135283	Sum of GTIs [s]
l2events	921438	Number of level 2 events

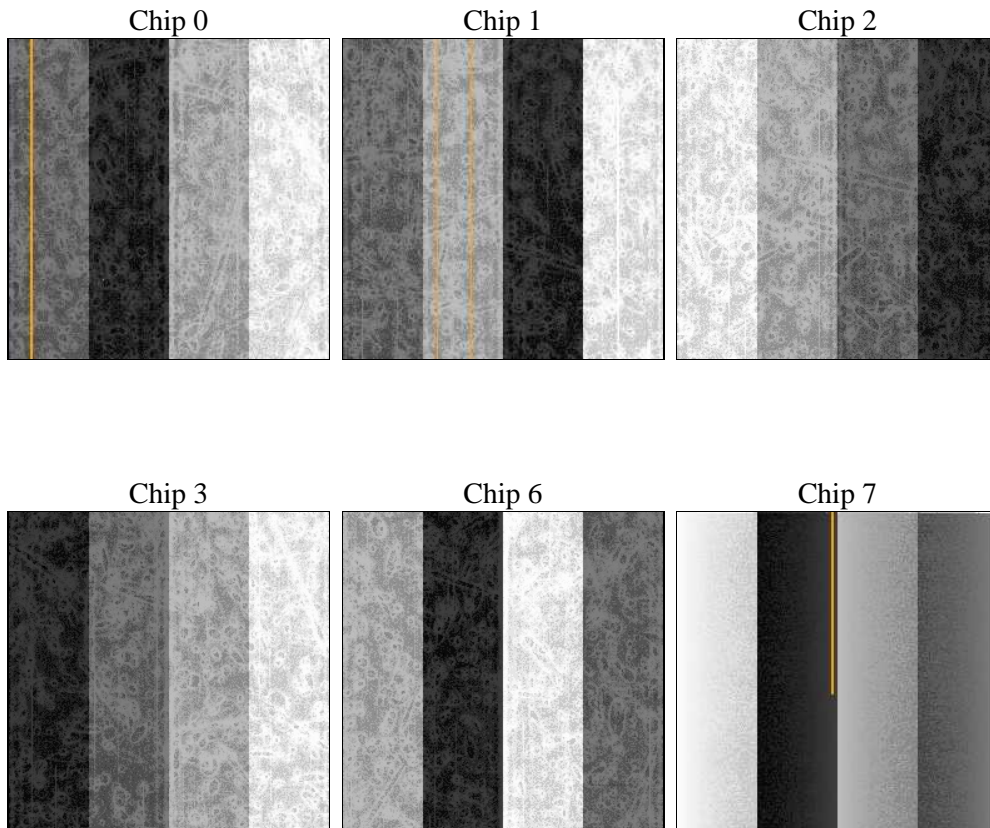
## 2 OBI

### 2.1 OBI

#### 2.1.1 Images



#### 2.1.2 Bias



### 2.1.3 Parameters

obi_num	0	Obi number		
ascdsver	8.1.1	ASCDS version number	sched_exp_time	0.0
caldsver	4.1.4	&#160		
date	2009-11-25T13:57:11	Date and time of file creation	ontime	3479.7402135283
revision	3	Processing version of data	ontime0	1373.042800419
			ontime1	1405.4122004062
			ontime2	1338.5482458249
			ontime3	1322.3429560065
			ontime6	1483.1150106937
			ontime7	3479.7402135283
			l1events	1062024

### 2.1.4 Events

	ccd 0	ccd 1	ccd 2	ccd 3	ccd 6	ccd 7		ccd 0	ccd 1	ccd 2	ccd 3	ccd 6	ccd 7
level 1 events	137283	141431	135474	134625	154003	359208	grade 0 events	44452	45640	37344	38615	35907	61496
rejected events	18333	18913	19386	19158	22160	33219		32%	32%	27%	28%	23%	17%
rejected %	13%	13%	14%	14%	14%	9%	grade 1 events	169	206	162	169	139	142
								0%	0%	0%	0%	0%	0%
							grade 2 events	44147	45806	50193	48768	62368	90744
								32%	32%	37%	36%	40%	25%
							grade 3 events	4852	4850	3895	3988	3674	28262
								3%	3%	2%	2%	2%	7%
							grade 4 events	4731	4899	3857	3962	3708	25902
								3%	3%	2%	2%	2%	7%
							grade 5 events	1197	1140	1125	1205	1205	4890
								0%	0%	0%	0%	0%	1%
							grade 6 events	20768	21323	20799	20134	26186	119585
								15%	15%	15%	14%	17%	33%
							grade 7 events	16967	17567	18099	17784	20816	28187
								12%	12%	13%	13%	13%	7%

## 2.2 Compared Parameters

Parameter	Planned	Actual
Instrument	ACIS	ACIS
Detector	ACIS-012367	ACIS-012367
Grating	NONE	NONE
Data mode	FAINT	FAINT
Observation mode	SECONDARY	SECONDARY
Pointing RA	0	189.9844156272823
Pointing Dec	0	-33.97442105878828
Pointing Roll	0.0	85.52968778539768
SIM focus pos (mm)	-0.782348	-0.7809083437167272
SIM defocus (mm)	0	0.7524282956875696
SIM translation stage pos (mm)	-233.592463	250.4635187648994
SIM translation stage offset (mm)	0	-0.007540371344731511
Observation start time	60750849.195011	60750848.426327
Observation start date	1999-12-05T03:14:09	1999-12-05T03:14:08
Observation end time	60759139.395314	60759138.626627
Observation end date	1999-12-05T05:32:19	1999-12-05T05:32:18
Read mode	TIMED	TIMED

Parameter	Planned	Actual
Obspar format version number	6	6
Obspar file type	PREDICTED	ACTUAL
Obspar update status	NONE	UPDATED
On-chip summing requested	N	N
Subarray requested	NONE	NONE
Alternating exposures requested	N	N
Primary exposure time	3.2	3.2

## 2.3 Star Slots

## 2.4 FID Slots

# A Summary

## A.1 Status

V&V Scientist	Jen Lauer
V&V Date (YYYY-MM-DD)	2010.01.25
V&V Edition	1
V&V Disposition and Status	OK
V&V Charge Time	3.4797402135283

## A.2 Comments

The focal plane temperature is approximately -110C during this observation. This reprocessing of the data applies no CTI correction because none is available for this temperature at present.

The ACIS CTI correction has not been calibrated at this temperature, because it was early in the mission, and ACIS had not yet been lowered to the standard -119.7 C. Both front and back illuminated chips are affected. However a T\_GAIN correction has been applied to the BI chips (ACIS-5 and ACIS-7) data included here.

The ACIS spectral response calibration is less accurate at these warmer temperatures than it is at -119.7 C. Users whose science objectives depend on the most accurate spectral response (ie: fitting line-rich spectra) may notice an effect. Users whose science objectives do not depend on the most accurate spectral response should not notice an effect.