

V&V Reference Report

L2 ASCDS Version : 8.4.5

Observation 62147 - L2 Version 4
Chandra X-Ray Center

L2 Processing Date : Aug 23 2012

Contents

1	Front	2
2	OBI	3
2.1	OBI	3
2.1.1	Images	3
2.1.2	Bias	3
2.1.3	Parameters	4
2.1.4	Events	4
2.2	Compared Parameters	5
2.3	Star Slots	6
2.4	FID Slots	6
A	Summary	7
A.1	Status	7
A.2	Comments	7

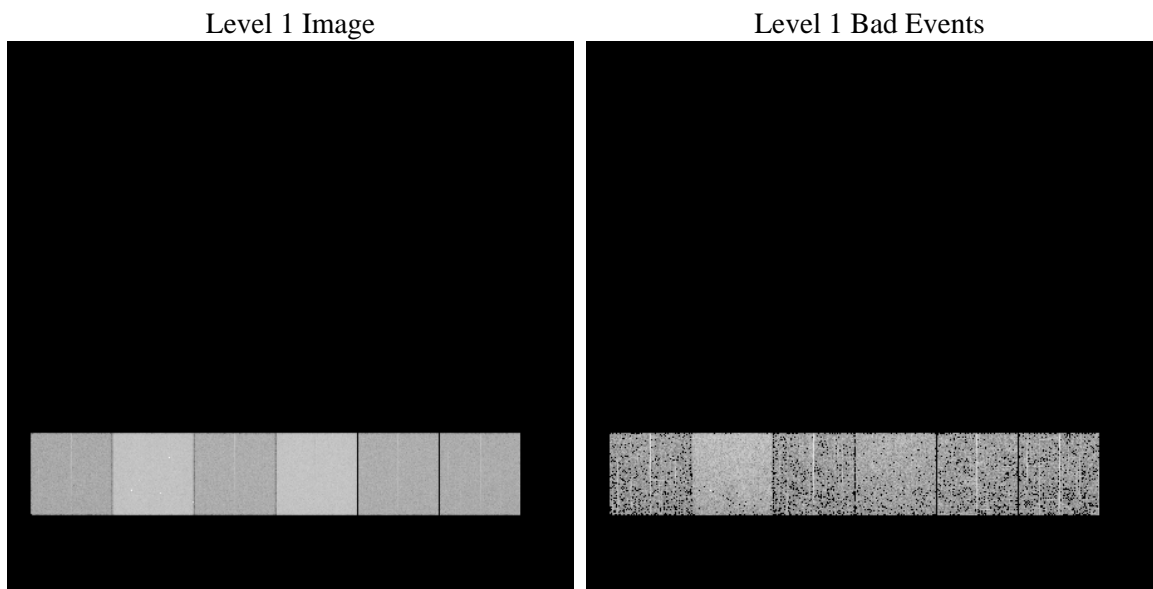
1 Front

seq_num	 	Sequence number
obs_id	62147	Observation id
title	ACIS-456789 diagnostics	Proposal title
observer	CHANDRA engineering request/realtime commanding	Principal investig
object	 	Source name
dtcycle	0	
cycle	P	events from which exps? Prim/Second/Both
ra_targ	0.0	Observer's specified target RA [deg]
dec_targ	0.0	Observer's specified target Dec [deg]
ra_nom	15.923760439277	Nominal RA [deg]
dec_nom	79.957662601478	Nominal Dec [deg]
roll_nom	325.07613097002	Nominal Roll [deg]
revision	4	Processing version of data
ontime	2949.3367008716	Sum of GTIs [s]
livetime	2911.9904236878	Livetime [s]
ontime4	1170.0140110552	Sum of GTIs [s]
ontime5	3169.7240596563	Sum of GTIs [s]
ontime6	1286.5842684656	Sum of GTIs [s]
ontime7	2949.3367008716	Sum of GTIs [s]
ontime8	1276.7791781574	Sum of GTIs [s]
ontime9	1251.0399610102	Sum of GTIs [s]
l2events	926963	Number of level 2 events

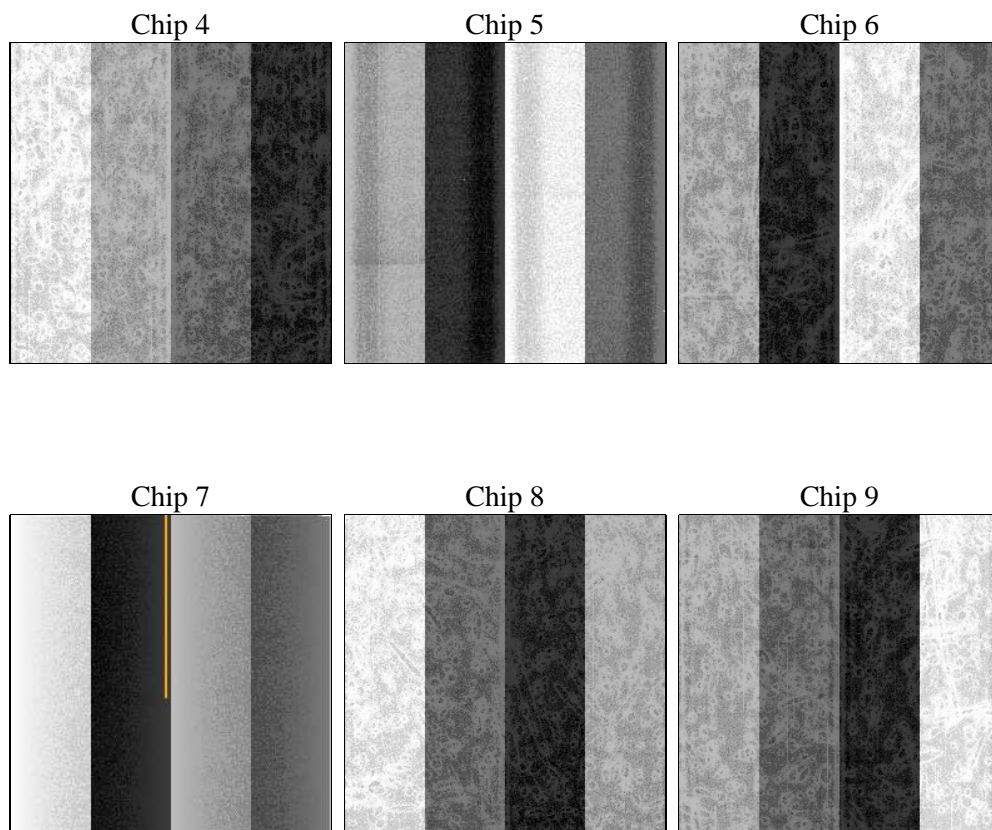
2 OBI

2.1 OBI

2.1.1 Images



2.1.2 Bias



2.1.3 Parameters

obi_num	0	Obi number	sched_exp_time	0.0	[s] Scheduled observation exposure time
ascdsver	8.4.5	Processing system revision	ontime	2949.3367008716	Sum of GTIs [s]
caldbver	4.5.1.1	 	ontime4	1170.0140110552	Sum of GTIs [s]
date	2012-08-23T17:37:42	Date and time of file creation	ontime5	3169.7240596563	Sum of GTIs [s]
revision	4	Processing version of data	ontime6	1286.5842684656	Sum of GTIs [s]
			ontime7	2949.3367008716	Sum of GTIs [s]
			ontime8	1276.7791781574	Sum of GTIs [s]
			ontime9	1251.0399610102	Sum of GTIs [s]
			l1events	1063429	Number of level 1 events

2.1.4 Events

	ccd 4	ccd 5	ccd 6	ccd 7	ccd 8	ccd 9		ccd 4	ccd 5	ccd 6	ccd 7	ccd 8	ccd 9
level 1 events	112907	277610	131542	286784	130765	123821	grade 0 events	56347	65121	64454	69551	64459	60887
rejected events	13097	26383	13468	16711	14268	13369		49%	23%	48%	24%	49%	49%
rejected %	11%	9%	10%	5%	10%	10%	grade 1 events	347	311	391	177	379	362
								0%	0%	0%	0%	0%	0%
							grade 2 events	17463	86894	20411	60073	20478	19290
								15%	31%	15%	20%	15%	15%
							grade 3 events	6184	16979	7340	28116	7378	6764
								5%	6%	5%	9%	5%	5%
							grade 4 events	6101	16675	7353	27767	7370	6792
								5%	6%	5%	9%	5%	5%
							grade 5 events	840	5450	948	3908	1075	895
								0%	1%	0%	1%	0%	0%
							grade 6 events	13715	65558	18516	84566	16812	16719
								12%	23%	14%	29%	12%	13%
							grade 7 events	11910	20622	12129	12626	12814	12112
								10%	7%	9%	4%	9%	9%

2.2 Compared Parameters

Parameter	Planned	Actual	Parameter	Planned	Actual
Instrument	ACIS	ACIS	Obspar format version number	7	7
Detector	ACIS-456789	ACIS-456789	Obspar file type	PREDICTED	ACTUAL
Grating	NONE	NONE	Obspar update status	NONE	UPDATED
Data mode	FAINT	FAINT	On-chip summing requested	N	N
Observation mode	SECONDARY	SECONDARY	Subarray requested	NONE	NONE
[deg] Pointing RA	0	15.92376043927717	Alternating exposures requested	N	N
[deg] Pointing Dec	0	79.95766260147751	[s] Primary exposure time	0.000000	3.2
[deg] Pointing Roll	0.0	325.0761309700201			
[mm] SIM focus pos	-0.684267	-0.7809083437167272			
[mm] SIM defocus	0	0.7524282956875696			
[mm] SIM translation stage pos	-190.132523	250.466033080201			
[mm] SIM translation stage offset	0	-0.01005468664627074			
[s] Observation start time (MET)	68071471.265	68071470.49619099			
Observation start date	2000-02-27T20:44:31	2000-02-27T20:44:30			
[s] Observation end time (MET)	68112651.66599999	68112650.89769401			
Observation end date	2000-02-28T08:10:52	2000-02-28T08:10:50			
Read mode	TIMED	TIMED			

2.3 Star Slots

2.4 FID Slots

A Summary

A.1 Status

V&V Scientist	Jen Lauer
V&V Date (YYYY-MM-DD)	2012.08.24
V&V Edition	1
V&V Disposition and Status	OK
V&V Charge Time	2.9493367008716

A.2 Comments