

V&V Reference Report

L2 ASCDS Version : 8.4.5

Observation 62137 - L2 Version 4
Chandra X-Ray Center

L2 Processing Date : Aug 23 2012

Contents

1	Front	2
2	OBI	3
2.1	OBI	3
2.1.1	Images	3
2.1.2	Bias	3
2.1.3	Parameters	4
2.1.4	Events	4
2.2	Compared Parameters	5
2.3	Star Slots	6
2.4	FID Slots	6
A	Summary	7
A.1	Status	7
A.2	Comments	7

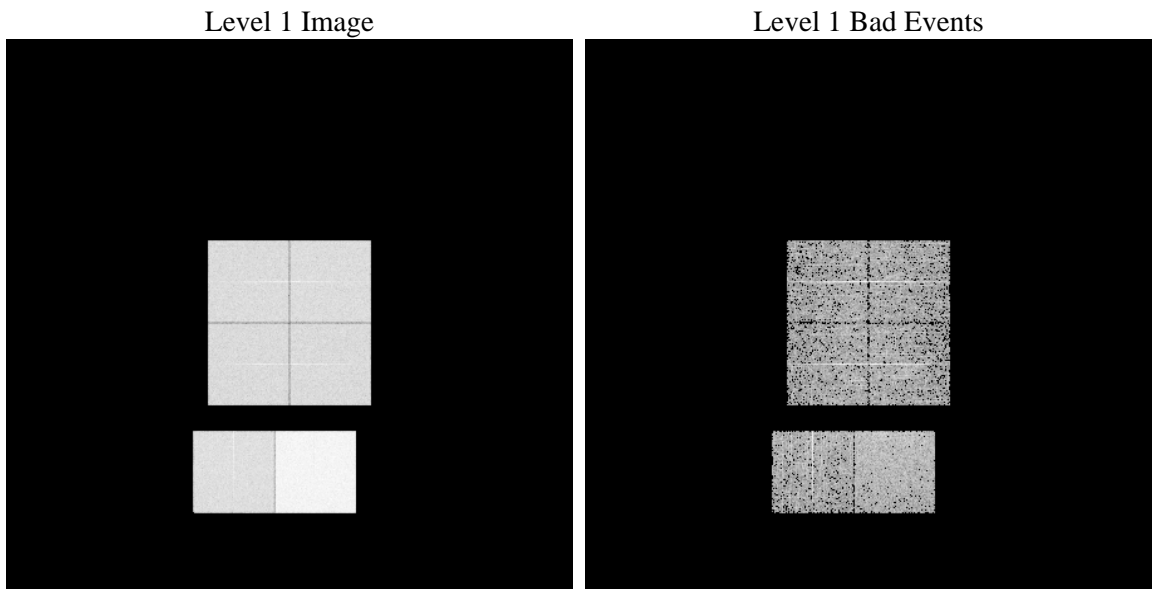
1 Front

seq_num	 	Sequence number
obs_id	62137	Observation id
title	ACIS-012367 diagnostics	Proposal title
observer	CHANDRA engineering request/realtime commanding	Principal investig
object	 	Source name
dtcycle	0	
cycle	P	events from which exps? Prim/Second/Both
ra_targ	0.0	Observer's specified target RA [deg]
dec_targ	0.0	Observer's specified target Dec [deg]
ra_nom	71.021409994769	Nominal RA [deg]
dec_nom	35.727229341521	Nominal Dec [deg]
roll_nom	277.70336636675	Nominal Roll [deg]
revision	4	Processing version of data
ontime	3516.6802559197	Sum of GTIs [s]
livetime	3472.1499330286	Livetime [s]
ontime0	1461.8813029081	Sum of GTIs [s]
ontime1	1508.9658956528	Sum of GTIs [s]
ontime2	1385.8475356996	Sum of GTIs [s]
ontime3	1398.6474159509	Sum of GTIs [s]
ontime6	1573.8688353449	Sum of GTIs [s]
ontime7	3516.6802559197	Sum of GTIs [s]
l2events	930677	Number of level 2 events

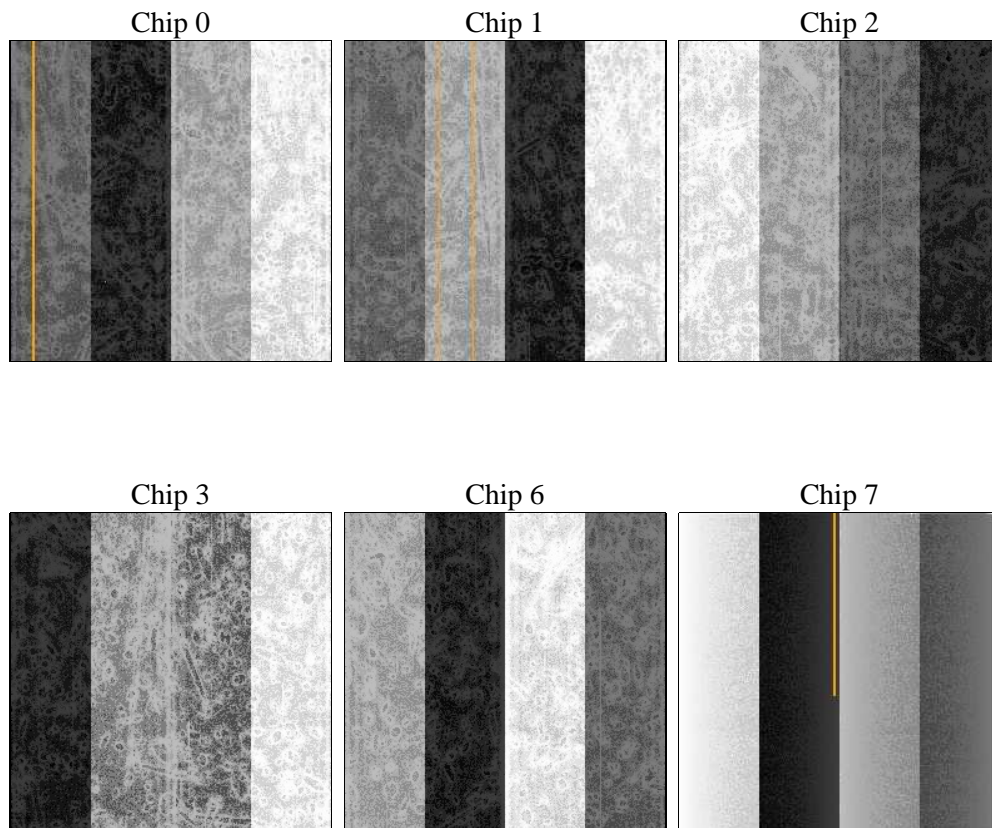
2 OBI

2.1 OBI

2.1.1 Images



2.1.2 Bias



2.1.3 Parameters

obi_num	0	Obi number	sched_exp_time	0.0	[s] Scheduled observation exposure time
ascdsver	8.4.5	Processing system revision	ontime	3516.6802559197	Sum of GTIs [s]
caldsver	4.5.1.1	 	ontime0	1461.8813029081	Sum of GTIs [s]
date	2012-08-23T19:29:44	Date and time of file creation	ontime1	1508.9658956528	Sum of GTIs [s]
revision	4	Processing version of data	ontime2	1385.8475356996	Sum of GTIs [s]
			ontime3	1398.6474159509	Sum of GTIs [s]
			ontime6	1573.8688353449	Sum of GTIs [s]
			ontime7	3516.6802559197	Sum of GTIs [s]
			l1events	1062849	Number of level 1 events

2.1.4 Events

	ccd 0	ccd 1	ccd 2	ccd 3	ccd 6	ccd 7		ccd 0	ccd 1	ccd 2	ccd 3	ccd 6	ccd 7
level 1 events	141655	145875	136805	137935	160238	340341	grade 0 events	70710	72866	68473	68787	78518	83324
rejected events	14364	14234	14323	14688	15811	20157		49%	49%	50%	49%	49%	24%
rejected %	10%	9%	10%	10%	9%	5%	grade 1 events	440	452	459	425	432	200
								0%	0%	0%	0%	0%	0%
							grade 2 events	22317	23111	21335	21479	25294	71416
								15%	15%	15%	15%	15%	20%
							grade 3 events	8126	8310	7739	7805	8877	33232
								5%	5%	5%	5%	5%	9%
							grade 4 events	8167	8232	7632	7796	8903	32884
								5%	5%	5%	5%	5%	9%
							grade 5 events	998	1117	986	1080	1168	4638
								0%	0%	0%	0%	0%	1%
							grade 6 events	18265	19122	17303	17380	22835	99624
								12%	13%	12%	12%	14%	29%
							grade 7 events	12632	12665	12878	13183	14211	15023
								8%	8%	9%	9%	8%	4%

2.2 Compared Parameters

Parameter	Planned	Actual
Instrument	ACIS	ACIS
Detector	ACIS-012367	ACIS-012367
Grating	NONE	NONE
Data mode	FAINT	FAINT
Observation mode	SECONDARY	SECONDARY
[deg] Pointing RA	0	71.02140999476902
[deg] Pointing Dec	0	35.72722934152074
[deg] Pointing Roll	0.0	277.7033663667535
[mm] SIM focus pos	-0.782348	-0.6828225247311905
[mm] SIM defocus	0	0.8505141146731063
[mm] SIM translation stage pos	-233.592463	250.466033080201
[mm] SIM translation stage offset	0	-0.01005468664627074
[s] Observation start time (MET)	68580371.483	68580370.714765
Observation start date	2000-03-04T18:06:11	2000-03-04T18:06:10
[s] Observation end time (MET)	68587671.53399999	68587670.765031
Observation end date	2000-03-04T20:07:52	2000-03-04T20:07:50
Read mode	TIMED	TIMED

Parameter	Planned	Actual
Obspar format version number	7	7
Obspar file type	PREDICTED	ACTUAL
Obspar update status	NONE	UPDATED
On-chip summing requested	N	N
Subarray requested	NONE	NONE
Alternating exposures requested	N	N
[s] Primary exposure time	0.000000	3.2

2.3 Star Slots

2.4 FID Slots

A Summary

A.1 Status

V&V Scientist	Jen Lauer
V&V Date (YYYY-MM-DD)	2012.08.24
V&V Edition	1
V&V Disposition and Status	OK
V&V Charge Time	3.5166802559197

A.2 Comments