

V&V Reference Report

L2 ASCDS Version : 7.6.10

Observation 61977 - L2 Version 001
Chandra X-Ray Center

L2 Processing Date : Jun 2 2007

Contents

1	Front	2
2	OBI	3
2.1	OBI	3
2.1.1	Images	3
2.1.2	Bias	3
2.1.3	Parameters	4
2.1.4	Events	4
2.2	Compared Parameters	5
2.3	Star Slots	6
2.4	FID Slots	6
A	Summary	7
A.1	Status	7
A.2	Comments	7

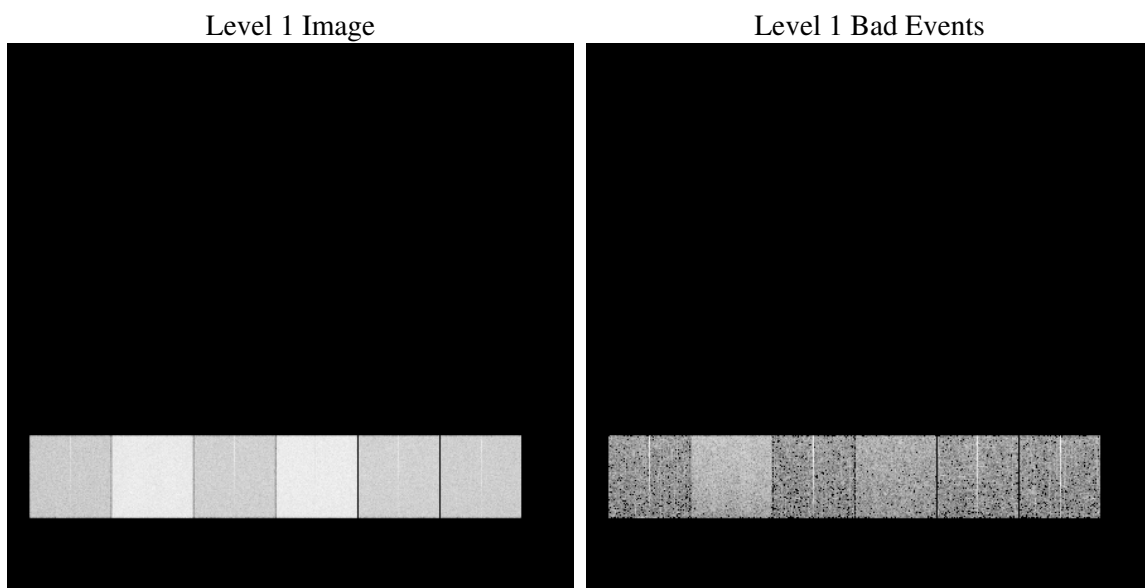
1 Front

seq_num	
obs_id	61977
title	ACIS-456789 diagnostics
observer	CHANDRA engineering request/realtime commanding
object	
dtcycle	0
cycle	P
ra_targ	0.0
dec_targ	0.0
ra_nom	180.843287792
dec_nom	-41.868335125576
roll_nom	227.48971770256
revision	3
ontime	4726.3122379333
livetime	4666.464826533
ontime4	2013.5805792212
ontime5	5089.300022155
ontime6	2176.9155036062
ontime7	4726.3122379333
ontime8	2224.2480091304
ontime9	2137.8999635577
l2events	1370763

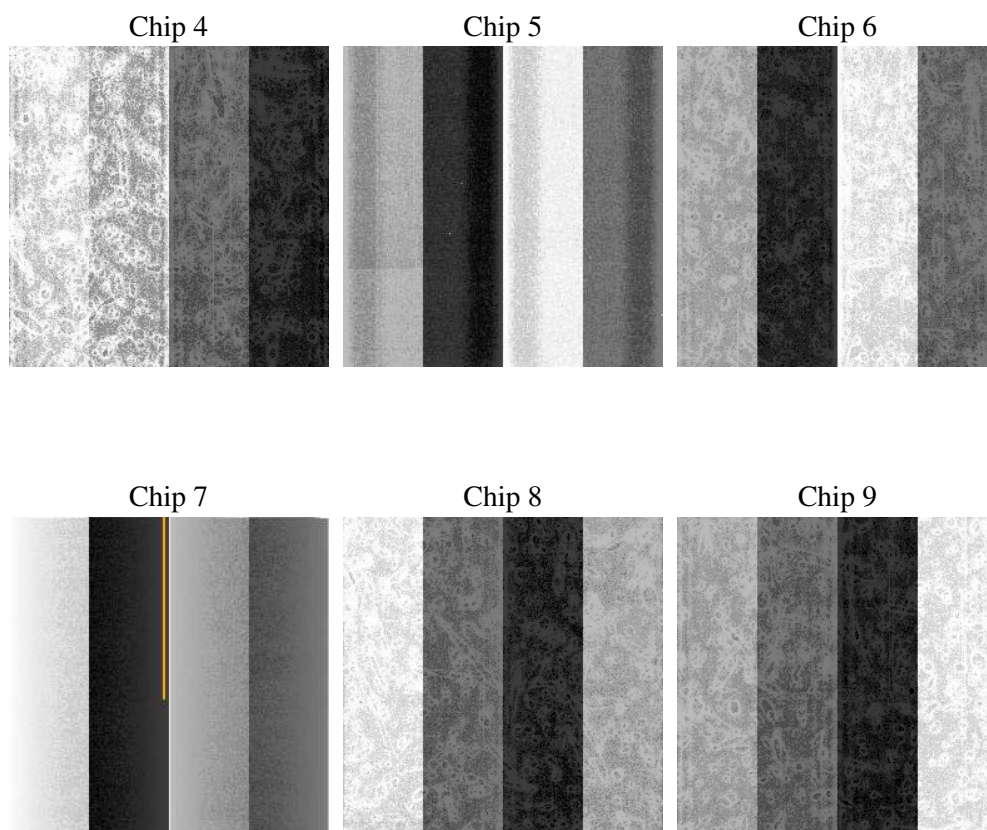
2 OBI

2.1 OBI

2.1.1 Images



2.1.2 Bias



2.1.3 Parameters

obi_num	0
ascdsver	7.6.10
caldsver	3.4.0
date	2007-06-02T13:10:40
revision	3

sched_exp_time	0.0
ontime	4726.3122379333
ontime4	2013.5805792212
ontime5	5089.300022155
ontime6	2176.9155036062
ontime7	4726.3122379333
ontime8	2224.2480091304
ontime9	2137.8999635577
l1events	1557091

2.1.4 Events

	ccd 4	ccd 5	ccd 6	ccd 7	ccd 8	ccd 9
level 1 events	172587	391564	197374	406177	202505	186884
rejected events	17080	36327	16813	22683	18362	17327
rejected %	9%	9%	8%	5%	9%	9%

	ccd 4	ccd 5	ccd 6	ccd 7	ccd 8	ccd 9
grade 0 events	88162	87995	98771	99192	101426	93550
	51%	22%	50%	24%	50%	50%
grade 1 events	468	244	497	286	488	487
	0%	0%	0%	0%	0%	0%
grade 2 events	27489	126043	31142	84777	32428	29770
	15%	32%	15%	20%	16%	15%
grade 3 events	9485	23217	11109	39251	11582	10402
	5%	5%	5%	9%	5%	5%
grade 4 events	9380	23136	11106	39221	11596	10402
	5%	5%	5%	9%	5%	5%
grade 5 events	1210	7632	1482	5342	1491	1470
	0%	1%	0%	1%	0%	0%
grade 6 events	20991	94846	28433	121053	27111	25433
	12%	24%	14%	29%	13%	13%
grade 7 events	15402	28451	14834	17055	16383	15370
	8%	7%	7%	4%	8%	8%

2.2 Compared Parameters

Parameter	Planned	Actual	Parameter	Planned	Actual
Instrument	ACIS	ACIS	Obspar format version number	6	6
Detector	ACIS-456789	ACIS-456789	Obspar file type	PREDICTED	ACTUAL
Grating	NONE	NONE	Obspar update status	NONE	UPDATED
Data mode	FAINT	FAINT	On-chip summing requested	N	N
Observation mode	SECONDARY	SECONDARY	Subarray requested	NONE	NONE
Pointing RA	0	180.8432877919979	Alternating exposures requested	N	N
Pointing Dec	0	-41.86833512557587	Primary exposure time	0.000000	3.2
Pointing Roll	0.0	227.4897177025559			
SIM focus pos (mm)	-0.684267	-0.6828225247311905			
SIM defocus (mm)	0	0.8505141146731063			
SIM translation stage pos (mm)	-190.132523	250.466033080201			
SIM translation stage offset (mm)	0	-0.01005468664627074			
Observation start time	81597133.962	81597133.193443			
Observation start date	2000-08-02T09:52:14	2000-08-02T09:52:13			
Observation end time	81607642.26199999	81607641.493834			
Observation end date	2000-08-02T12:47:22	2000-08-02T12:47:21			
Read mode	TIMED	TIMED			

2.3 Star Slots

2.4 FID Slots

A Summary

A.1 Status

V&V Scientist	Jen Lauer
V&V Date (YYYY-MM-DD)	2007.06.04
V&V Edition	1
V&V Disposition and Status	OK
V&V Charge Time	4.72631223

A.2 Comments

Focal plane temperature is warmer than -118.7 C degrees for the first ksec of this observation. The ACIS spectral response calibration for the front-illuminated chips is less accurate at these warmer temperatures than it is at -119.7 C. The back-illuminatd chips are not affected at the focal plane temperatures recorded for this observation. Users whose science objectives depend on the most accurate spectral response (i.e.: fitting line-rich spectra) may notice an effect. Users whose science objectives do not depend on the most accurate spectral response should not notice an effect.