

# V&V Reference Report

## L2 ASCDS Version : 7.6.10

Observation 61937 - L2 Version 001  
Chandra X-Ray Center

L2 Processing Date : Jun 7 2007

## Contents

<b>1</b>	<b>Front</b>	<b>2</b>
<b>2</b>	<b>OBI</b>	<b>3</b>
2.1	OBI . . . . .	3
2.1.1	Images . . . . .	3
2.1.2	Bias . . . . .	3
2.1.3	Parameters . . . . .	4
2.1.4	Events . . . . .	4
2.2	Compared Parameters . . . . .	5
2.3	Star Slots . . . . .	6
2.4	FID Slots . . . . .	6
<b>A</b>	<b>Summary</b>	<b>7</b>
A.1	Status . . . . .	7
A.2	Comments . . . . .	7

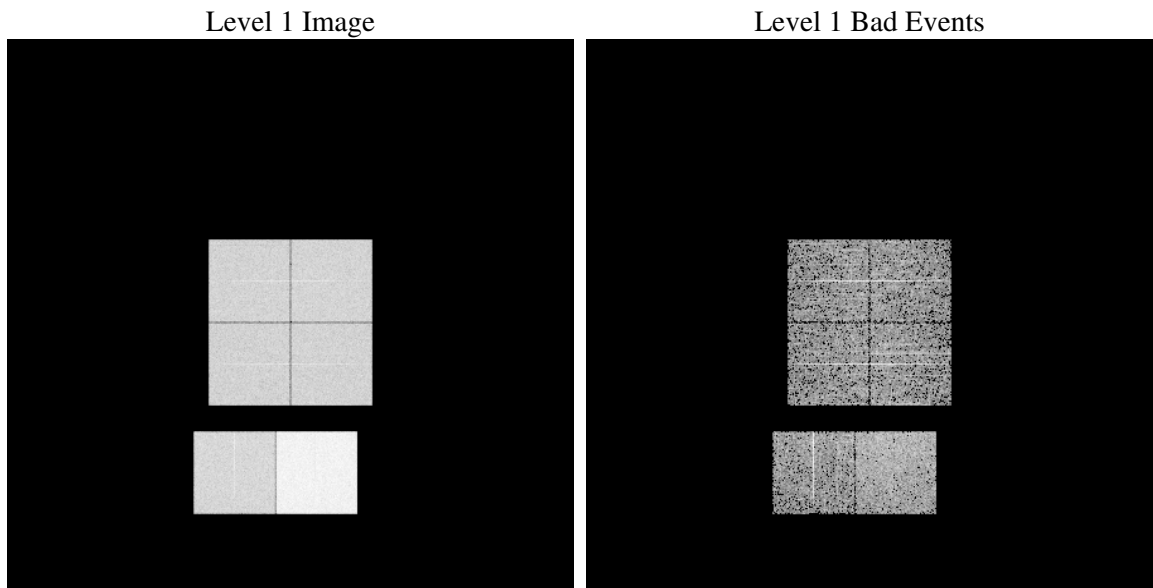
# 1 Front

seq_num	&#160
obs_id	61937
title	ACIS-012367 diagnostics
observer	CHANDRA engineering request/realtime commanding
object	&#160
dtcycle	0
cycle	P
ra_targ	0.0
dec_targ	0.0
ra_nom	76.942190187252
dec_nom	-3.0574274325706
roll_nom	95.765382401464
revision	2
ontime	4119.9494158626
livetime	4067.7801356232
ontime0	1815.6399439871
ontime1	1851.3323340714
ontime2	1744.4195429087
ontime3	1744.2553131729
ontime6	1935.6817829013
ontime7	4119.9494158626
l2events	993526

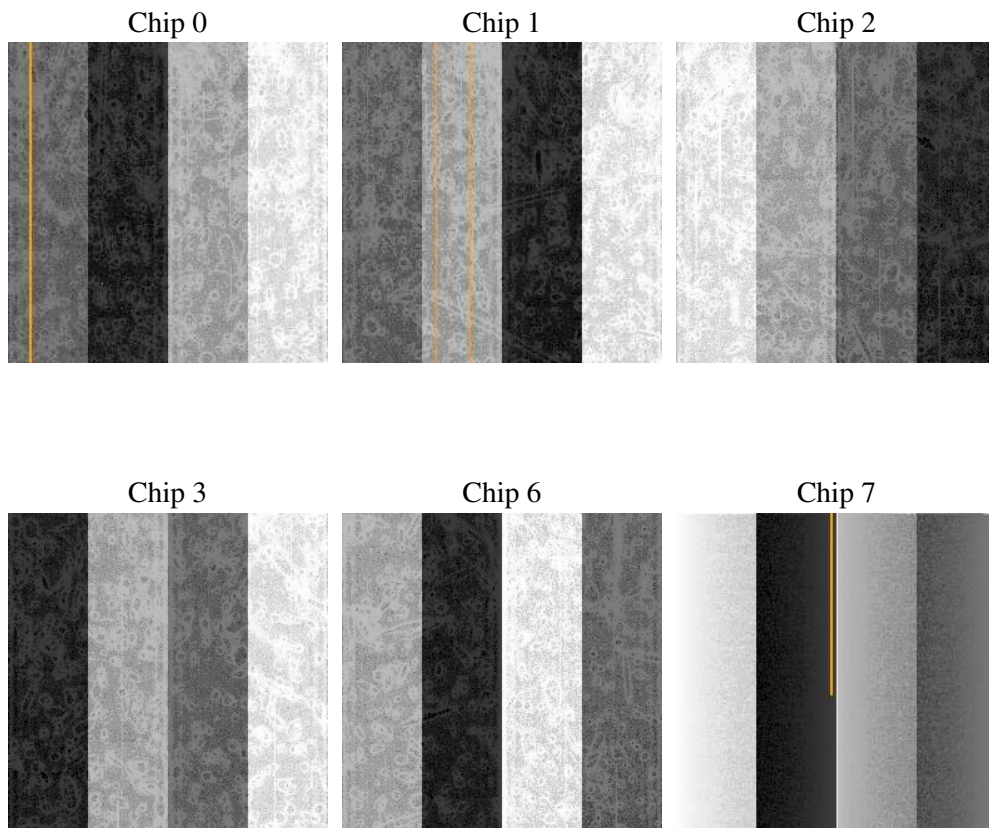
## 2 OBI

### 2.1 OBI

#### 2.1.1 Images



#### 2.1.2 Bias



### 2.1.3 Parameters

obi_num	0
ascdsver	7.6.10
caldsver	3.4.0
date	2007-06-07T03:50:55
revision	2

sched_exp_time	0.0
ontime	4119.9494158626
ontime0	1815.6399439871
ontime1	1851.3323340714
ontime2	1744.4195429087
ontime3	1744.2553131729
ontime6	1935.6817829013
ontime7	4119.9494158626
l1events	1126332

### 2.1.4 Events

	ccd 0	ccd 1	ccd 2	ccd 3	ccd 6	ccd 7
level 1 events	153322	156458	149356	150884	170496	345816
rejected events	13758	13631	13736	14658	14933	20394
rejected %	8%	8%	9%	9%	8%	5%

	ccd 0	ccd 1	ccd 2	ccd 3	ccd 6	ccd 7
grade 0 events	76698	78911	75658	76139	84911	83854
	50%	50%	50%	50%	49%	24%
grade 1 events	406	432	401	394	441	229
	0%	0%	0%	0%	0%	0%
grade 2 events	24960	25198	23892	23870	27041	72152
	16%	16%	15%	15%	15%	20%
grade 3 events	9119	9164	8587	8659	9636	33233
	5%	5%	5%	5%	5%	9%
grade 4 events	8812	9076	8413	8859	9561	33116
	5%	5%	5%	5%	5%	9%
grade 5 events	1106	1085	1050	1046	1301	4531
	0%	0%	0%	0%	0%	1%
grade 6 events	20224	20685	19355	18937	24682	103309
	13%	13%	12%	12%	14%	29%
grade 7 events	11997	11907	12000	12980	12923	15392
	7%	7%	8%	8%	7%	4%

## 2.2 Compared Parameters

Parameter	Planned	Actual	Parameter	Planned	Actual
Instrument	ACIS	ACIS	Obspar format version number	6	6
Detector	ACIS-012367	ACIS-012367	Obspar file type	PREDICTED	ACTUAL
Grating	NONE	NONE	Obspar update status	NONE	UPDATED
Data mode	FAINT	FAINT	On-chip summing requested	N	N
Observation mode	SECONDARY	SECONDARY	Subarray requested	NONE	NONE
Pointing RA	0	76.94219018725244	Alternating exposures requested	N	N
Pointing Dec	0	-3.057427432570606	Primary exposure time	3.2	3.2
Pointing Roll	0.0	95.76538240146424			
SIM focus pos (mm)	-0.782348	-0.7809083437167272			
SIM defocus (mm)	0	0.7524282956875696			
SIM translation stage pos (mm)	-233.592463	250.466033080201			
SIM translation stage offset (mm)	0	-0.01005468664627074			
Observation start time	84748884.029917	84748883.26145101			
Observation start date	2000-09-07T21:21:24	2000-09-07T21:21:23			
Observation end time	84771272.08075801	84771271.31229199			
Observation end date	2000-09-08T03:34:32	2000-09-08T03:34:31			
Read mode	TIMED	TIMED			

## **2.3 Star Slots**

## **2.4 FID Slots**

## A Summary

### A.1 Status

V&V Scientist	Jen Lauer
V&V Date (YYYY-MM-DD)	2007.06.07
V&V Edition	1
V&V Disposition and Status	OK
V&V Charge Time	4.11994941

### A.2 Comments