

V&V Reference Report

L2 ASCDS Version : 8.4.5

Observation 61907 - L2 Version 4
Chandra X-Ray Center

L2 Processing Date : Sep 5 2012

Contents

1	Front	2
2	OBI Primary	3
2.1	OBI	3
2.1.1	Images	3
2.1.2	Bias	3
2.1.3	Parameters	4
2.1.4	Events	4
2.2	Compared Parameters	5
2.3	Star Slots	6
2.4	FID Slots	6
3	OBI Secondary	6
3.1	OBI	6
3.1.1	Images	6
3.1.2	Bias	6
3.1.3	Parameters	7
3.1.4	Events	7
A	Summary	8
A.1	Status	8
A.2	Comments	8

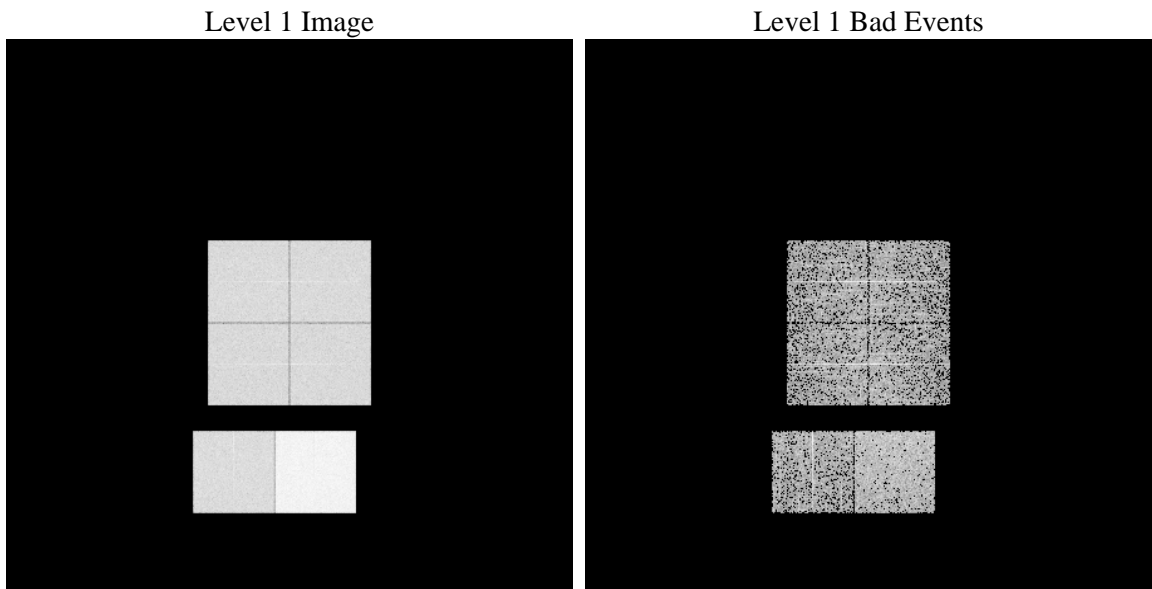
1 Front

seq_num	 	Sequence number
obs_id	61907	Observation id
title	ACIS-012367 diagnostics	Proposal title
observer	CHANDRA engineering request/realtime commanding	Principal investig
object	 	Source name
dtcycle	0	
cycle	P	events are from which exps? P[rimary] S[econdar
ra_targ	0.0	Observer's specified target RA [deg]
dec_targ	0.0	Observer's specified target Dec [deg]
ra_nom	330.44977593035	Nominal RA [deg]
dec_nom	-44.374715525299	Nominal Dec [deg]
roll_nom	318.22863653866	Nominal Roll [deg]
revision	4	Processing version of data
ontime	3531.3204573542	Sum of GTIs [s]
livetime	3495.4570678382	Livetime [s]
ontime0	1481.6493872851	Sum of GTIs [s]
ontime1	1453.3210672587	Sum of GTIs [s]
ontime2	1384.5823471993	Sum of GTIs [s]
ontime3	1392.6233872175	Sum of GTIs [s]
ontime6	1489.5262672901	Sum of GTIs [s]
ontime7	3531.3204573542	Sum of GTIs [s]
l2events	803356	Number of level 2 events

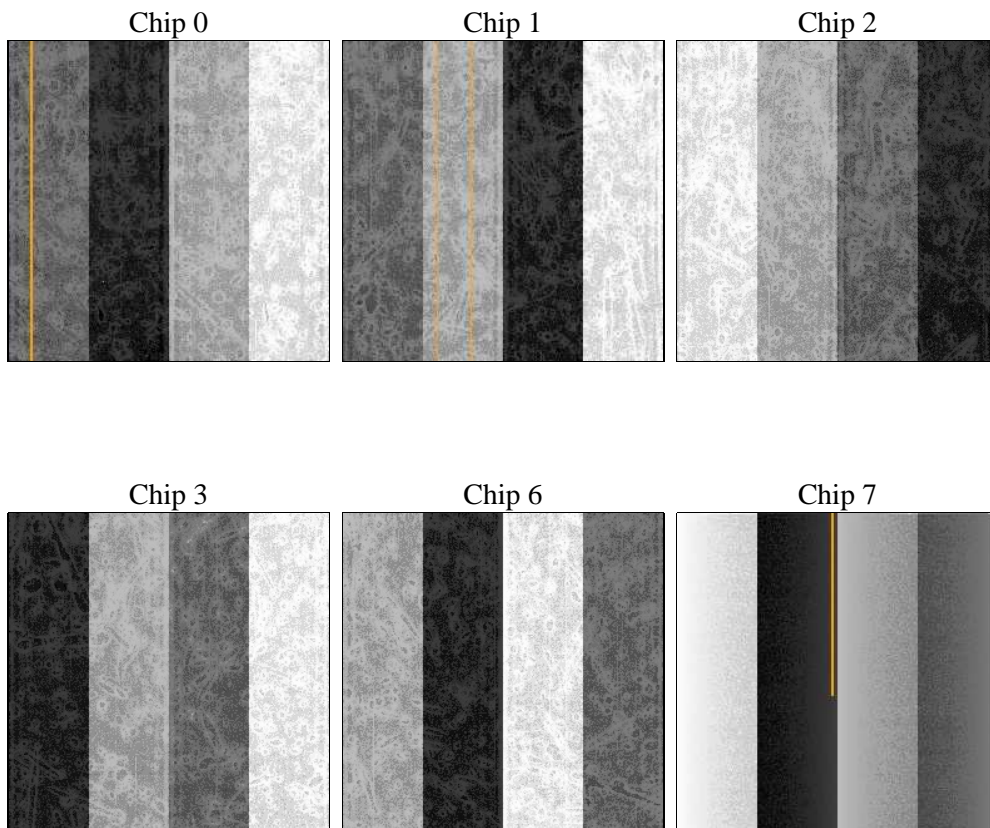
2 OBI Primary

2.1 OBI

2.1.1 Images



2.1.2 Bias



2.1.3 Parameters

obi_num	1	Obi number	sched_exp_time	0.0	[s] Scheduled observation exposure time
ascdsver	8.4.5	Processing system revision	ontime	3531.3204573542	Sum of GTIs [s]
caldsver	4.5.1.1	 	ontime0	1481.6493872851	Sum of GTIs [s]
date	2012-09-05T16:41:15	Date and time of file creation	ontime1	1453.3210672587	Sum of GTIs [s]
revision	4	Processing version of data	ontime2	1384.5823471993	Sum of GTIs [s]
			ontime3	1392.6233872175	Sum of GTIs [s]
			ontime6	1489.5262672901	Sum of GTIs [s]
			ontime7	3531.3204573542	Sum of GTIs [s]
			l1events	907345	Number of level 1 events

2.1.4 Events

	ccd 0	ccd 1	ccd 2	ccd 3	ccd 6	ccd 7		ccd 0	ccd 1	ccd 2	ccd 3	ccd 6	ccd 7
level 1 events	123037	121340	117921	118061	131136	295850	grade 0 events	62101	61128	59103	59682	65341	72977
rejected events	10535	10494	11102	11062	11162	16633		50%	50%	50%	50%	49%	24%
rejected %	8%	8%	9%	9%	8%	5%	grade 1 events	363	357	378	364	338	237
								0%	0%	0%	0%	0%	0%
							grade 2 events	19555	19415	18923	18659	20659	62459
								15%	16%	16%	15%	15%	21%
							grade 3 events	7036	7028	6815	6780	7368	28538
								5%	5%	5%	5%	5%	9%
							grade 4 events	7403	6991	6784	6777	7375	28798
								6%	5%	5%	5%	5%	9%
							grade 5 events	900	886	860	953	1012	3849
								0%	0%	0%	0%	0%	1%
							grade 6 events	16407	16284	15194	15101	19231	86748
								13%	13%	12%	12%	14%	29%
							grade 7 events	9272	9251	9864	9745	9812	12244
								7%	7%	8%	8%	7%	4%

2.2 Compared Parameters

Parameter	Planned	Actual	Parameter	Planned	Actual
Instrument	ACIS	ACIS	Obspar format version number	7	7
Detector	ACIS-012367	ACIS-012367	Obspar file type	PREDICTED	ACTUAL
Grating	NONE	NONE	Obspar update status	NONE	UPDATED
Data mode	FAINT	FAINT	On-chip summing requested	N	N
Observation mode	SECONDARY	SECONDARY	Subarray requested	NONE	NONE
[deg] Pointing RA	0	330.4497759303549	Alternating exposures requested	Y	Y
[deg] Pointing Dec	0	-44.37471552529857	[s] Primary exposure time	4	4
[deg] Pointing Roll	0.0	318.2286365386627	[s] Secondary exposure time	3.2	3.2
[mm] SIM focus pos	-0.782348	-1.428180813131781	Duty cycle	1	1
[mm] SIM defocus	0	0.1051558262725154			
[mm] SIM translation stage pos	-233.592463	250.466033080201			
[mm] SIM translation stage offset	0	-0.01005468664627074			
[s] Observation start time (MET)	86346498.289995	86346497.521529			
Observation start date	2000-09-26T09:08:18	2000-09-26T09:08:17			
[s] Observation end time (MET)	86365339.84070501	86365339.072239			
Observation end date	2000-09-26T14:22:20	2000-09-26T14:22:19			
Read mode	TIMED	TIMED			

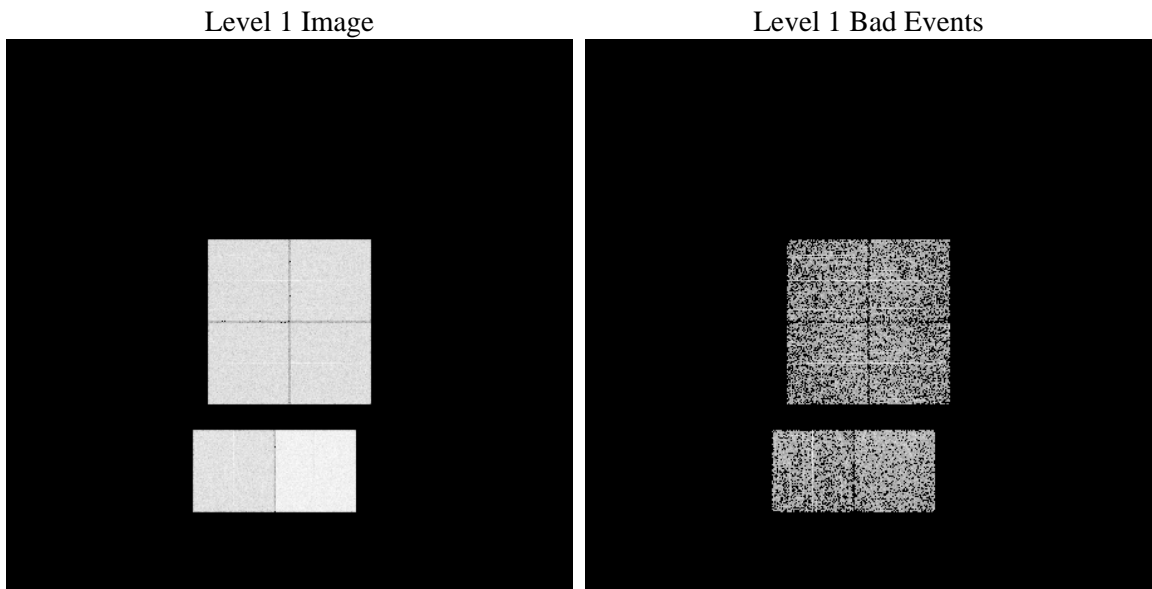
2.3 Star Slots

2.4 FID Slots

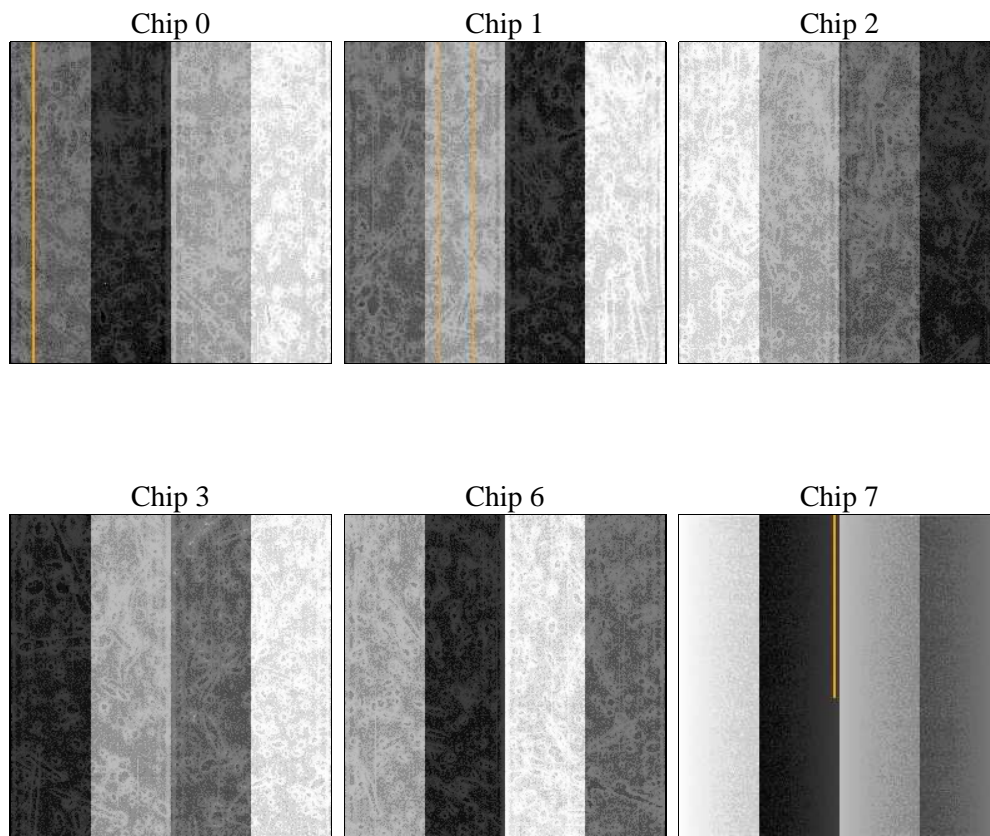
3 OBI Secondary

3.1 OBI

3.1.1 Images



3.1.2 Bias



3.1.3 Parameters

obi_num	1	Obi number	sched_exp_time	0.0	[s] Scheduled observation exposure time
ascdsver	8.4.5	Processing system revision			
caldbver	4.5.1.1	 			
date	2012-09-05T16:43:09	Date and time of file creation			
revision	4	Processing version of data			
			ontime	1704.2385299206	Sum of GTIs [s]
			ontime0	861.56813216209	Sum of GTIs [s]
			ontime1	903.70165205002	Sum of GTIs [s]
			ontime2	874.34541365504	Sum of GTIs [s]
			ontime3	868.05021214485	Sum of GTIs [s]
			ontime6	936.11205196381	Sum of GTIs [s]
			ontime7	1704.2385299206	Sum of GTIs [s]
			l1events	525950	Number of level 1 events

3.1.4 Events

	ccd 0	ccd 1	ccd 2	ccd 3	ccd 6	ccd 7
level 1 events	73073	76568	74084	75332	83786	143107
rejected events	7124	7228	6999	7496	7969	8574
rejected %	9%	9%	9%	9%	9%	5%

	ccd 0	ccd 1	ccd 2	ccd 3	ccd 6	ccd 7
grade 0 events	36521	38581	37487	38398	41518	35102
	49%	50%	50%	50%	49%	24%
grade 1 events	188	212	198	222	211	83
	0%	0%	0%	0%	0%	0%
grade 2 events	11706	12281	11668	11901	12939	30035
	16%	16%	15%	15%	15%	20%
grade 3 events	4285	4311	4165	4254	4772	13790
	5%	5%	5%	5%	5%	9%
grade 4 events	4250	4374	4211	4323	4710	13561
	5%	5%	5%	5%	5%	9%
grade 5 events	500	553	543	509	602	1889
	0%	0%	0%	0%	0%	1%
grade 6 events	9445	10035	9554	9232	12131	42269
	12%	13%	12%	12%	14%	29%
grade 7 events	6178	6221	6258	6493	6903	6378
	8%	8%	8%	8%	8%	4%

A Summary

A.1 Status

V&V Scientist	Jen Lauer
V&V Date (YYYY-MM-DD)	2012.09.14
V&V Edition	1
V&V Disposition and Status	OK
V&V Charge Time	5.2355589872748

A.2 Comments