

V&V Reference Report

L2 ASCDS Version : 8.4.5

Observation 61847 - L2 Version 3
Chandra X-Ray Center

L2 Processing Date : Sep 3 2012

Contents

1	Front	2
2	OBI	3
2.1	OBI	3
2.1.1	Images	3
2.1.2	Bias	3
2.1.3	Parameters	4
2.1.4	Events	4
2.2	Compared Parameters	5
2.3	Star Slots	6
2.4	FID Slots	6
A	Summary	7
A.1	Status	7
A.2	Comments	7

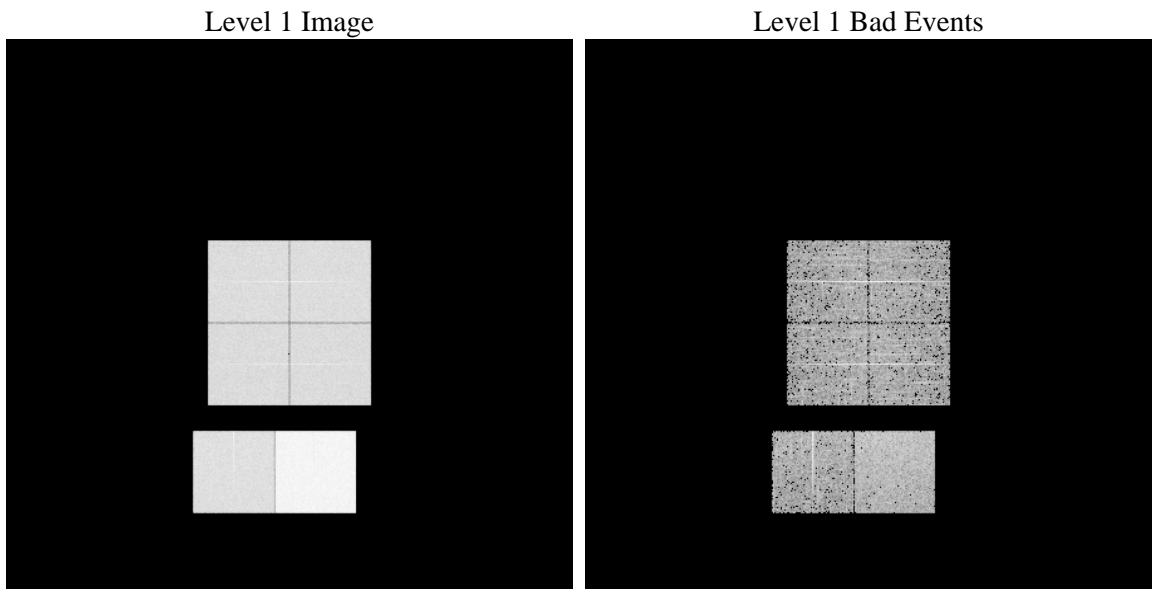
1 Front

seq_num	 	Sequence number
obs_id	61847	Observation id
title	ACIS-012367 diagnostics	Proposal title
observer	CHANDRA engineering request/realtime commanding	Principal investig
object	 	Source name
dtcycle	0	
cycle	P	events from which exps? Prim/Second/Both
ra_targ	0.0	Observer's specified target RA [deg]
dec_targ	0.0	Observer's specified target Dec [deg]
ra_nom	30.158239970341	Nominal RA [deg]
dec_nom	-39.75047470068	Nominal Dec [deg]
roll_nom	332.39134776035	Nominal Roll [deg]
revision	3	Processing version of data
ontime	5606.6858098209	Sum of GTIs [s]
livetime	5535.6905781561	Livetime [s]
ontime0	2426.1735746413	Sum of GTIs [s]
ontime1	2432.6965552717	Sum of GTIs [s]
ontime2	2268.4571767896	Sum of GTIs [s]
ontime3	2265.216156736	Sum of GTIs [s]
ontime6	2533.2507352978	Sum of GTIs [s]
ontime7	5606.6858098209	Sum of GTIs [s]
l2events	1254645	Number of level 2 events

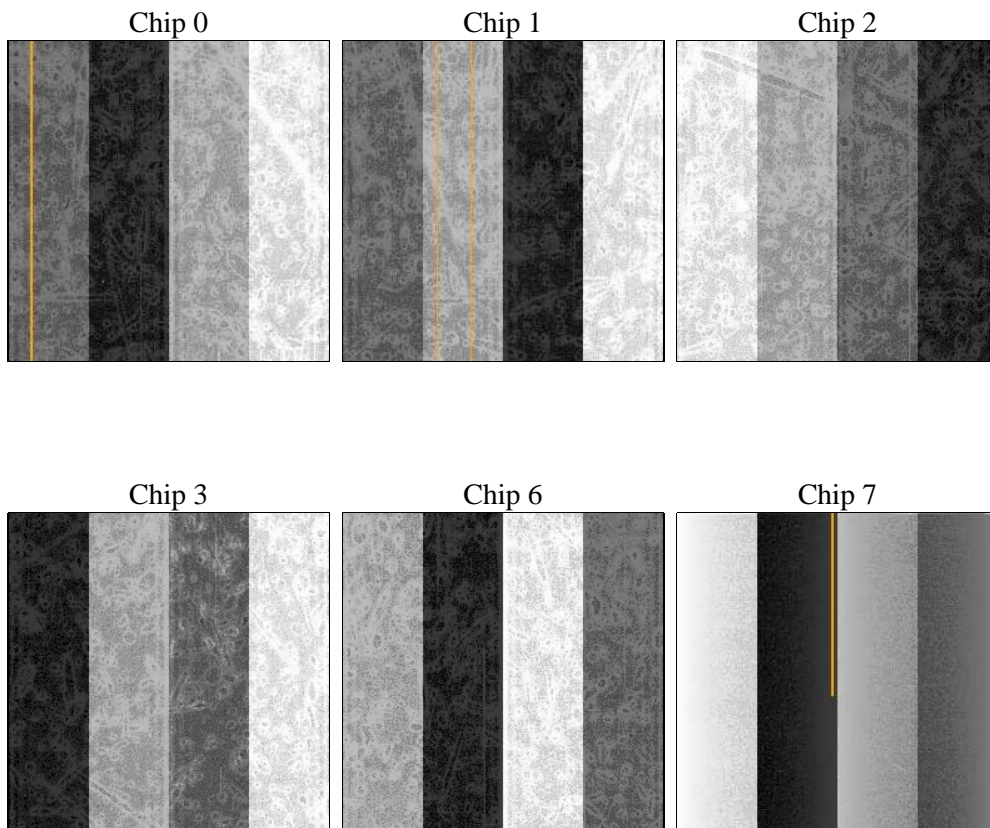
2 OBI

2.1 OBI

2.1.1 Images



2.1.2 Bias



2.1.3 Parameters

obi_num	0	Obi number	sched_exp_time	0.0	[s] Scheduled observation exposure time
ascdsver	8.4.5	Processing system revision	ontime	5606.6858098209	Sum of GTIs [s]
caldsver	4.5.1.1	 	ontime0	2426.1735746413	Sum of GTIs [s]
date	2012-09-03T21:02:46	Date and time of file creation	ontime1	2432.6965552717	Sum of GTIs [s]
revision	3	Processing version of data	ontime2	2268.4571767896	Sum of GTIs [s]
			ontime3	2265.216156736	Sum of GTIs [s]
			ontime6	2533.2507352978	Sum of GTIs [s]
			ontime7	5606.6858098209	Sum of GTIs [s]
			l1events	1429721	Number of level 1 events

2.1.4 Events

	ccd 0	ccd 1	ccd 2	ccd 3	ccd 6	ccd 7		ccd 0	ccd 1	ccd 2	ccd 3	ccd 6	ccd 7
level 1 events	195252	196242	186420	186381	214749	450677	grade 0 events	97458	98380	93737	93344	106493	108683
rejected events	18349	18577	18625	19072	19484	28300		49%	50%	50%	50%	49%	24%
rejected %	9%	9%	9%	10%	9%	6%	grade 1 events	523	506	504	488	534	299
								0%	0%	0%	0%	0%	0%
							grade 2 events	31624	31279	29378	29170	33845	93587
								16%	15%	15%	15%	15%	20%
							grade 3 events	11239	11419	10507	10706	12142	43346
								5%	5%	5%	5%	5%	9%
							grade 4 events	11155	11074	10505	10706	11943	42881
								5%	5%	5%	5%	5%	9%
							grade 5 events	1435	1420	1379	1401	1610	6419
								0%	0%	0%	0%	0%	1%
							grade 6 events	25427	25513	23891	23644	30842	134112
								13%	13%	12%	12%	14%	29%
							grade 7 events	16391	16651	16519	16922	17340	21350
								8%	8%	8%	9%	8%	4%

2.2 Compared Parameters

Parameter	Planned	Actual	Parameter	Planned	Actual
Instrument	ACIS	ACIS	Obspar format version number	7	7
Detector	ACIS-012367	ACIS-012367	Obspar file type	PREDICTED	ACTUAL
Grating	NONE	NONE	Obspar update status	NONE	UPDATED
Data mode	FAINT	FAINT	On-chip summing requested	N	N
Observation mode	SECONDARY	SECONDARY	Subarray requested	NONE	NONE
[deg] Pointing RA	0	30.15823997034103	Alternating exposures requested	N	N
[deg] Pointing Dec	0	-39.75047470067976	[s] Primary exposure time	0.000000	3.2
[deg] Pointing Roll	0.0	332.3913477603467			
[mm] SIM focus pos	-0.782348	-0.6828225247311905			
[mm] SIM defocus	0	0.8505141146731063			
[mm] SIM translation stage pos	-233.592463	250.466033080201			
[mm] SIM translation stage offset	0	-0.01005468664627074			
[s] Observation start time (MET)	91144874.022	91144873.253078			
Observation start date	2000-11-20T22:01:14	2000-11-20T22:01:13			
[s] Observation end time (MET)	91174445.273	91174444.504207			
Observation end date	2000-11-21T06:14:05	2000-11-21T06:14:04			
Read mode	TIMED	TIMED			

2.3 Star Slots

2.4 FID Slots

A Summary

A.1 Status

V&V Scientist	Beth Sundheim
V&V Date (YYYY-MM-DD)	2012.09.11
V&V Edition	1
V&V Disposition and Status	OK
V&V Charge Time	5.6066858098209

A.2 Comments