

V&V Reference Report

L2 ASCDS Version : 7.6.10

Observation 61847 - L2 Version 001
Chandra X-Ray Center

L2 Processing Date : Jun 16 2007

Contents

1	Front	2
2	OBI	3
2.1	OBI	3
2.1.1	Images	3
2.1.2	Bias	3
2.1.3	Parameters	4
2.1.4	Events	4
2.2	Compared Parameters	5
2.3	Star Slots	6
2.4	FID Slots	6
A	Summary	7
A.1	Status	7
A.2	Comments	7

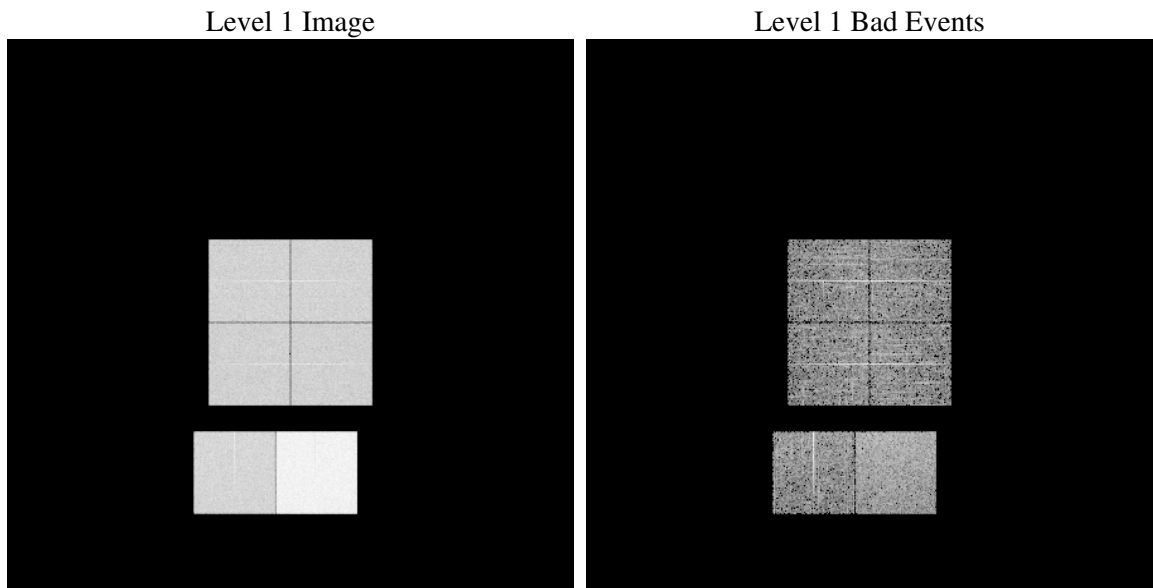
1 Front

seq_num	
obs_id	61847
title	ACIS-012367 diagnostics
observer	CHANDRA engineering request/realtime commanding
object	
dtcycle	0
cycle	P
ra_targ	0.0
dec_targ	0.0
ra_nom	30.15823997031
dec_nom	-39.750474700743
roll_nom	332.39134776034
revision	2
ontime	5606.6858098358
livetime	5535.6905781708
ontime0	2424.5735746473
ontime1	2431.0965552777
ontime2	2268.4571768045
ontime3	2265.2161567509
ontime6	2531.6507353038
ontime7	5606.6858098358
l2events	1253927

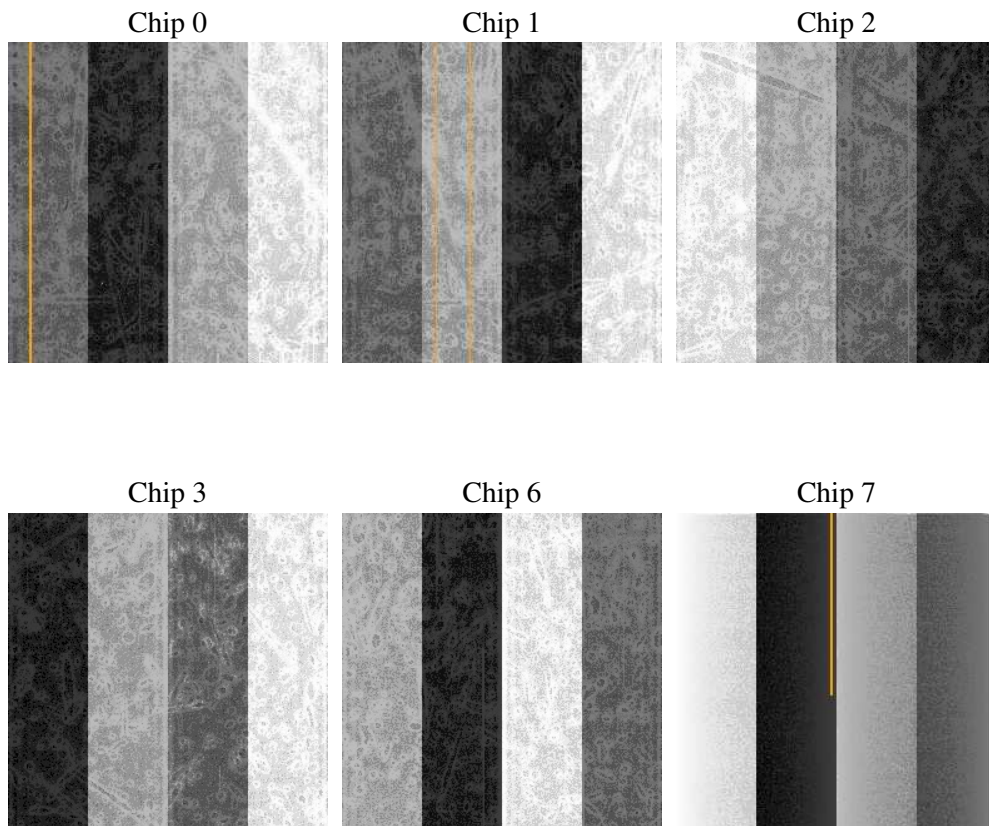
2 OBI

2.1 OBI

2.1.1 Images



2.1.2 Bias



2.1.3 Parameters

obi_num	0
ascdsver	7.6.10
caldsver	3.4.0
date	2007-06-17T01:12:57
revision	2

sched_exp_time	0.0
ontime	5606.6858098358
ontime0	2424.5735746473
ontime1	2431.0965552777
ontime2	2268.4571768045
ontime3	2265.2161567509
ontime6	2531.6507353038
ontime7	5606.6858098358
l1events	1429721

2.1.4 Events

	ccd 0	ccd 1	ccd 2	ccd 3	ccd 6	ccd 7
level 1 events	195252	196242	186420	186381	214749	450677
rejected events	18593	18829	18637	19043	19741	28351
rejected %	9%	9%	9%	10%	9%	6%

	ccd 0	ccd 1	ccd 2	ccd 3	ccd 6	ccd 7
grade 0 events	97456	98379	93733	93344	106491	108686
	49%	50%	50%	50%	49%	24%
grade 1 events	523	506	503	488	534	299
	0%	0%	0%	0%	0%	0%
grade 2 events	31625	31280	29383	29170	33847	93584
	16%	15%	15%	15%	15%	20%
grade 3 events	11238	11419	10507	10705	12143	43350
	5%	5%	5%	5%	5%	9%
grade 4 events	11155	11073	10504	10706	11942	42885
	5%	5%	5%	5%	5%	9%
grade 5 events	1435	1420	1379	1402	1610	6418
	0%	0%	0%	0%	0%	1%
grade 6 events	25428	25514	23891	23644	30841	134107
	13%	13%	12%	12%	14%	29%
grade 7 events	16392	16651	16520	16922	17341	21348
	8%	8%	8%	9%	8%	4%

2.2 Compared Parameters

Parameter	Planned	Actual	Parameter	Planned	Actual
Instrument	ACIS	ACIS	Obspar format version number	6	6
Detector	ACIS-012367	ACIS-012367	Obspar file type	PREDICTED	ACTUAL
Grating	NONE	NONE	Obspar update status	NONE	UPDATED
Data mode	FAINT	FAINT	On-chip summing requested	N	N
Observation mode	SECONDARY	SECONDARY	Subarray requested	NONE	NONE
Pointing RA	0	30.15823997031004	Alternating exposures requested	N	N
Pointing Dec	0	-39.7504747007431	Primary exposure time	0.000000	3.2
Pointing Roll	0.0	332.3913477603355			
SIM focus pos (mm)	-0.782348	-0.6828225247311905			
SIM defocus (mm)	0	0.8505141146731063			
SIM translation stage pos (mm)	-233.592463	250.466033080201			
SIM translation stage offset (mm)	0	-0.01005468664627074			
Observation start time	91144874.022	91144873.253078			
Observation start date	2000-11-20T22:01:14	2000-11-20T22:01:13			
Observation end time	91174445.273	91174444.504207			
Observation end date	2000-11-21T06:14:05	2000-11-21T06:14:04			
Read mode	TIMED	TIMED			

2.3 Star Slots

2.4 FID Slots

A Summary

A.1 Status

V&V Scientist	Jen Lauer
V&V Date (YYYY-MM-DD)	2007.06.18
V&V Edition	1
V&V Disposition and Status	OK
V&V Charge Time	5.6066858

A.2 Comments