

# V&V Reference Report

## L2 ASCDS Version : 7.6.9

Observation 61617 - L2 Version 001  
Chandra X-Ray Center

L2 Processing Date : Nov 23 2006

## Contents

<b>1</b>	<b>Front</b>	<b>2</b>
<b>2</b>	<b>OBI</b>	<b>3</b>
2.1	OBI . . . . .	3
2.1.1	Images . . . . .	3
2.1.2	Bias . . . . .	3
2.1.3	Parameters . . . . .	4
2.1.4	Events . . . . .	4
2.2	Compared Parameters . . . . .	5
2.3	Aspect . . . . .	6
2.4	Star Slots . . . . .	8
2.5	FID Slots . . . . .	8
<b>A</b>	<b>Summary</b>	<b>9</b>
A.1	Status . . . . .	9
A.2	Comments . . . . .	9

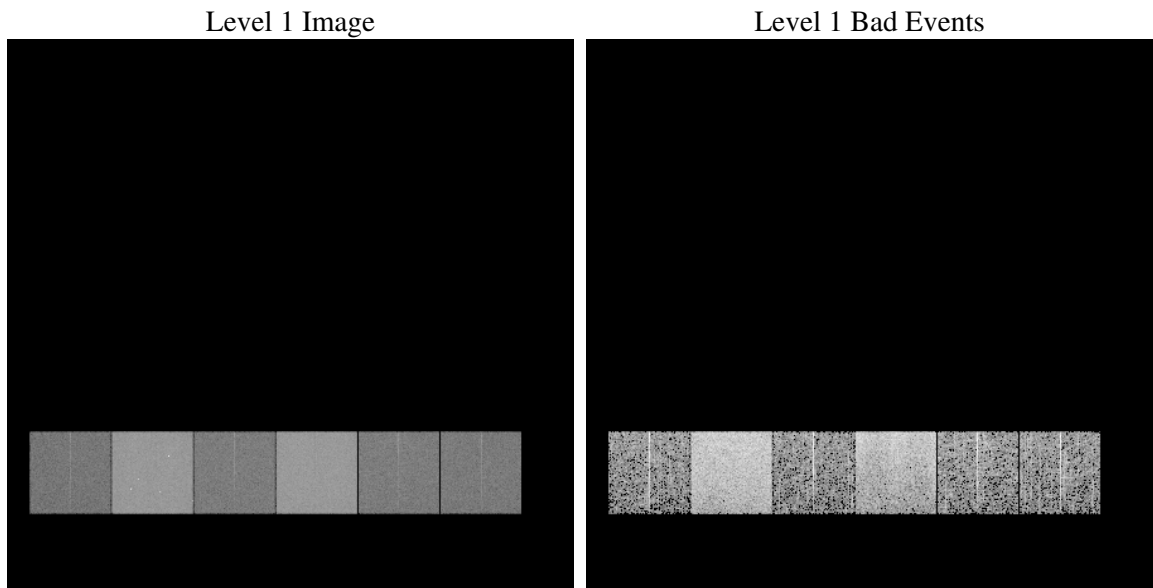
# 1 Front

seq_num	&#160
obs_id	61617
title	ACIS-456789 diagnostics
observer	CHANDRA engineering request/realtime commanding
object	&#160
dtcycle	0
cycle	P
ra_targ	0.0
dec_targ	0.0
ra_nom	349.97446253066
dec_nom	-16.984984550151
roll_nom	115.7046679057
revision	2
ontime	4134.1638304889
livetime	4081.8145587727
ontime4	1622.5116603822
ontime5	4448.5778347701
ontime6	1813.691900149
ontime7	4134.1638304889
ontime8	1820.2560302317
ontime9	1755.2298709154
l2events	938994

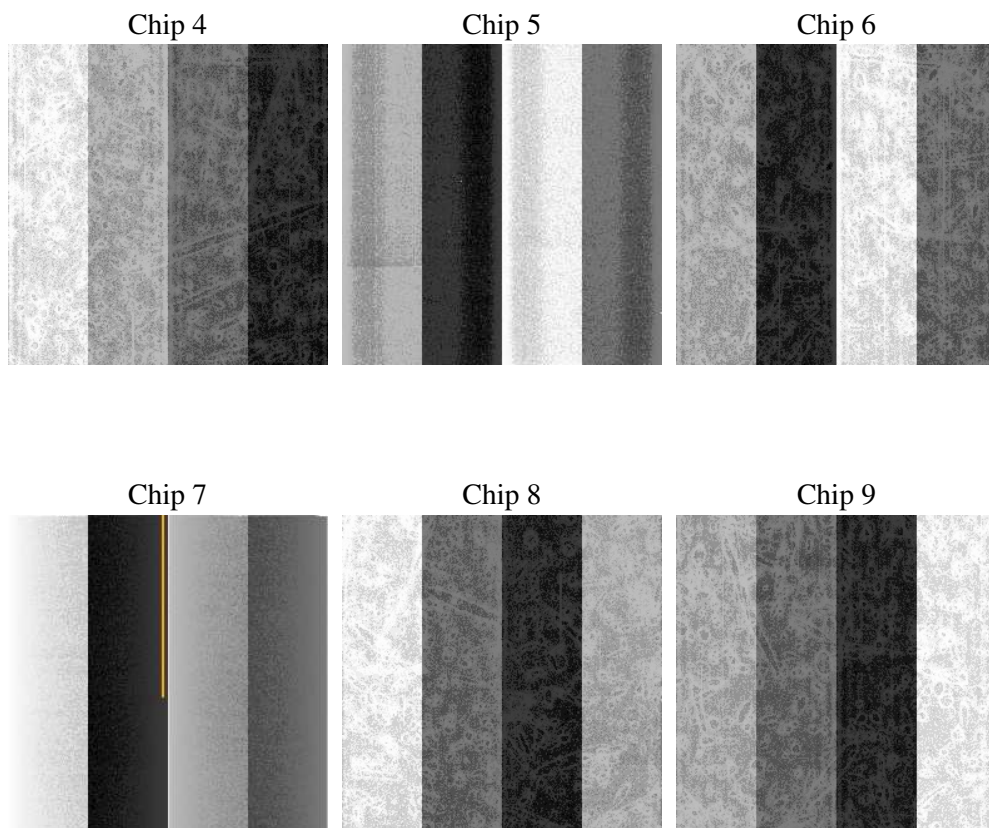
## 2 OBI

### 2.1 OBI

#### 2.1.1 Images



#### 2.1.2 Bias



### 2.1.3 Parameters

obi_num	0
ascdsver	7.6.9
caldsver	3.2.4
date	2006-11-23T07:14:08
revision	2

sched_exp_time	0.0
ontime	4135.5341924131
ontime4	1623.7589023113
ontime5	4449.907156691
ontime6	1814.9801820815
ontime7	4135.5341924131
ontime8	1821.4622321576
ontime9	1756.6412728429
l1events	1107054

### 2.1.4 Events

	ccd 4	ccd 5	ccd 6	ccd 7	ccd 8	ccd 9
level 1 events	115344	291094	136720	297471	137650	128775
rejected events	13883	38344	13647	30217	15279	14618
rejected %	12%	13%	9%	10%	11%	11%

	ccd 4	ccd 5	ccd 6	ccd 7	ccd 8	ccd 9
grade 0 events	57547	35416	67249	50862	67212	62812
	49%	12%	49%	17%	48%	48%
grade 1 events	287	111	345	109	302	327
	0%	0%	0%	0%	0%	0%
grade 2 events	17863	118586	21196	79324	21366	20179
	15%	40%	15%	26%	15%	15%
grade 3 events	6160	9530	7623	20718	7681	7098
	5%	3%	5%	6%	5%	5%
grade 4 events	6344	9247	7550	20425	7784	7079
	5%	3%	5%	6%	5%	5%
grade 5 events	928	4628	1100	4372	1203	1014
	0%	1%	0%	1%	0%	0%
grade 6 events	13547	79971	19455	95925	18328	16989
	11%	27%	14%	32%	13%	13%
grade 7 events	12668	33605	12202	25736	13774	13277
	10%	11%	8%	8%	10%	10%

## 2.2 Compared Parameters

Parameter	Planned	Actual	Parameter	Planned	Actual
Instrument	ACIS	ACIS	Obspar format version number	6	6
Detector	ACIS-456789	ACIS-456789	Obspar file type	PREDICTED	ACTUAL
Grating	NONE	NONE	Obspar update status	NONE	UPDATED
Data mode	FAINT	FAINT	On-chip summing requested	N	N
Observation mode	SECONDARY	SECONDARY	Subarray requested	NONE	NONE
Pointing RA	0	349.9744625306612	Alternating exposures requested	N	N
Pointing Dec	0	-16.98498455015142	Primary exposure time	0.000000	3.2
Pointing Roll	0.0	115.704667905703			
SIM focus pos (mm)	-0.684267	-0.6828225247311905			
SIM defocus (mm)	0	0.8505141146731063			
SIM translation stage pos (mm)	-190.132523	250.466033080201			
SIM translation stage offset (mm)	0	-0.01005468664627074			
Observation start time	107138505.188	107138504.41965			
Observation start date	2001-05-25T00:41:45	2001-05-25T00:41:44			
Observation end time	107170323.239	107170322.4709			
Observation end date	2001-05-25T09:32:03	2001-05-25T09:32:02			
Read mode	TIMED	TIMED			

## 2.3 Aspect



## **2.4 Star Slots**

## **2.5 FID Slots**

## A Summary

### A.1 Status

V&V Scientist	Jen Lauer
V&V Date (YYYY-MM-DD)	2006.11.24
V&V Edition	1
V&V Disposition and Status	OK
V&V Charge Time	4.13416383

### A.2 Comments