

V&V Reference Report

L2 ASCDS Version : 7.6.9

Observation 61567 - L2 Version 001
Chandra X-Ray Center

L2 Processing Date : Dec 11 2006

Contents

1	Front	2
2	OBI	3
2.1	OBI	3
2.1.1	Images	3
2.1.2	Bias	3
2.1.3	Parameters	4
2.1.4	Events	4
2.2	Compared Parameters	5
2.3	Aspect	6
2.4	Star Slots	8
2.5	FID Slots	8
A	Summary	9
A.1	Status	9
A.2	Comments	9

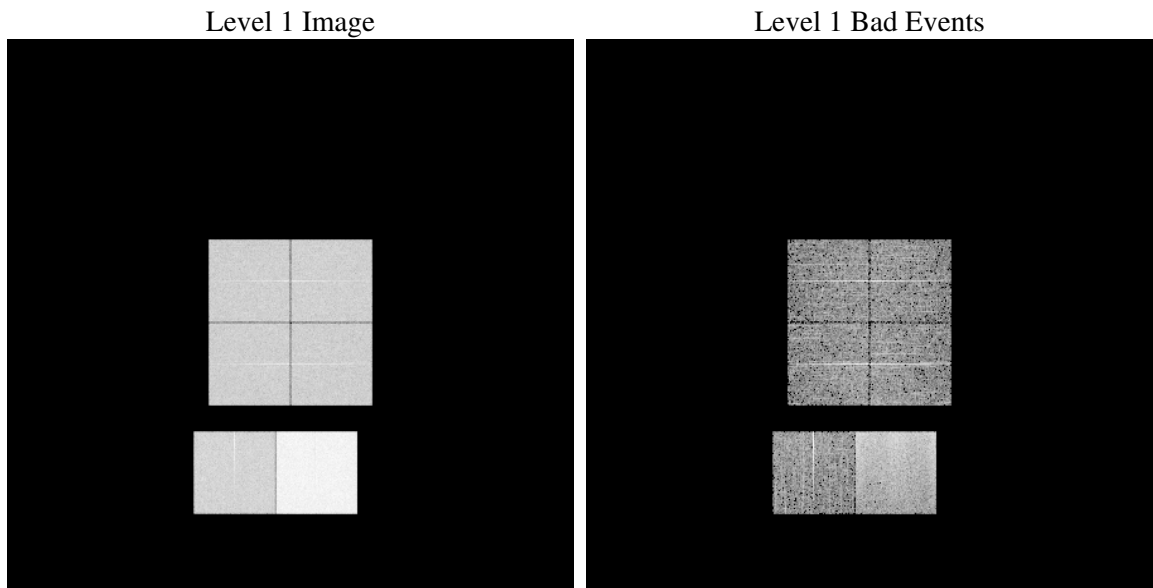
1 Front

seq_num	
obs_id	61567
title	ACIS-012367 diagnostics
observer	CHANDRA engineering request/realtime commanding
object	
dtcycle	0
cycle	P
ra_targ	0.0
dec_targ	0.0
ra_nom	304.98269251913
dec_nom	-24.976090922206
roll_nom	90.513957049006
revision	2
ontime	6724.8183254749
livetime	6639.6646266382
ontime0	2629.6922845393
ontime1	2693.0354919285
ontime2	2564.95350492
ontime3	2535.6204335243
ontime6	2868.0510832518
ontime7	6724.8183254749
l2events	1217171

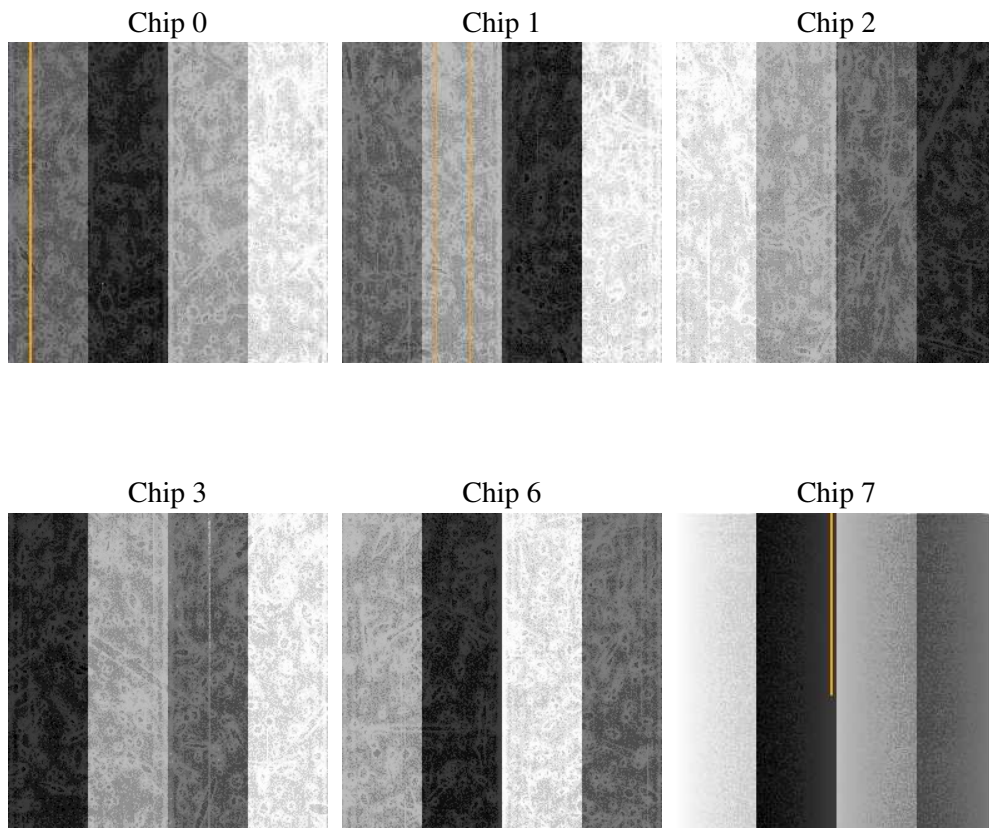
2 OBI

2.1 OBI

2.1.1 Images



2.1.2 Bias



2.1.3 Parameters

obi_num	0
ascdsver	7.6.9
caldsver	3.2.4
date	2006-12-12T02:37:56
revision	2

sched_exp_time	0.0
ontime	6728.325265646
ontime0	2631.7215923518
ontime1	2696.5424320996
ontime2	2566.9007327408
ontime3	2537.7318213433
ontime6	2871.558023423
ontime7	6728.325265646
l1events	1424731

2.1.4 Events

	ccd 0	ccd 1	ccd 2	ccd 3	ccd 6	ccd 7
level 1 events	183657	188479	184281	182106	211788	474420
rejected events	19755	20465	21605	21803	23037	49826
rejected %	10%	10%	11%	11%	10%	10%

	ccd 0	ccd 1	ccd 2	ccd 3	ccd 6	ccd 7
grade 0 events	90188	92941	90690	89913	103270	81056
	49%	49%	49%	49%	48%	17%
grade 1 events	527	494	507	525	488	189
	0%	0%	0%	0%	0%	0%
grade 2 events	28990	29514	28435	28138	32624	126053
	15%	15%	15%	15%	15%	26%
grade 3 events	10503	10576	10395	10016	11785	32999
	5%	5%	5%	5%	5%	6%
grade 4 events	10298	10641	10297	10123	11626	32251
	5%	5%	5%	5%	5%	6%
grade 5 events	1527	1574	1388	1497	1750	7177
	0%	0%	0%	0%	0%	1%
grade 6 events	24124	24554	23180	22330	29648	152764
	13%	13%	12%	12%	13%	32%
grade 7 events	17500	18185	19389	19564	20597	41931
	9%	9%	10%	10%	9%	8%

2.2 Compared Parameters

Parameter	Planned	Actual	Parameter	Planned	Actual
Instrument	ACIS	ACIS	Obspar format version number	6	6
Detector	ACIS-012367	ACIS-012367	Obspar file type	PREDICTED	ACTUAL
Grating	NONE	NONE	Obspar update status	NONE	UPDATED
Data mode	FAINT	FAINT	On-chip summing requested	N	N
Observation mode	SECONDARY	SECONDARY	Subarray requested	NONE	NONE
Pointing RA	0	304.982692519127	Alternating exposures requested	N	N
Pointing Dec	0	-24.97609092220631	Primary exposure time	0.000000	3.2
Pointing Roll	0.0	90.51395704900627			
SIM focus pos (mm)	-0.782348	-0.6828225247311905			
SIM defocus (mm)	0	0.8505141146731063			
SIM translation stage pos (mm)	-233.592463	250.466033080201			
SIM translation stage offset (mm)	0	-0.01005468664627074			
Observation start time	110335306.063	110335305.29427			
Observation start date	2001-07-01T00:41:46	2001-07-01T00:41:45			
Observation end time	110346533.913	110346533.1447			
Observation end date	2001-07-01T03:48:54	2001-07-01T03:48:53			
Read mode	TIMED	TIMED			

2.3 Aspect

2.4 Star Slots

2.5 FID Slots

A Summary

A.1 Status

V&V Scientist	Jen Lauer
V&V Date (YYYY-MM-DD)	2006.12.12
V&V Edition	1
V&V Disposition and Status	OK
V&V Charge Time	6.72481832

A.2 Comments