

V&V Reference Report

L2 ASCDS Version : 8.4.5

Observation 61547 - L2 Version 3
Chandra X-Ray Center

L2 Processing Date : Sep 20 2012

Contents

1	Front	2
2	OBI	3
2.1	OBI	3
2.1.1	Images	3
2.1.2	Bias	3
2.1.3	Parameters	4
2.1.4	Events	4
2.2	Compared Parameters	5
2.3	Star Slots	6
2.4	FID Slots	6
A	Summary	7
A.1	Status	7
A.2	Comments	7

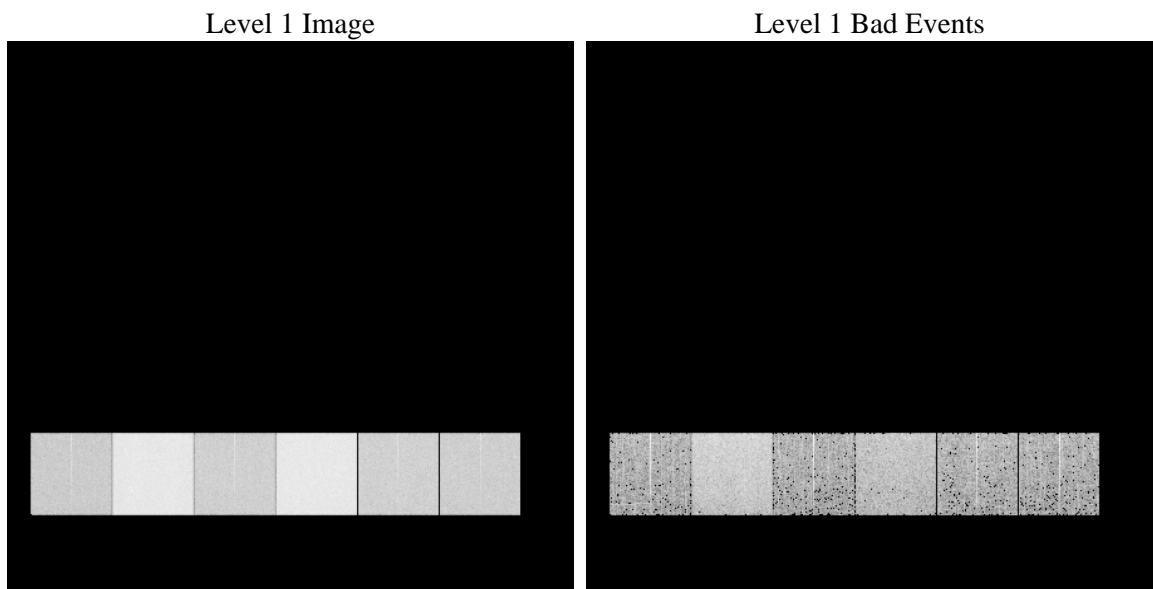
1 Front

seq_num	 	Sequence number
obs_id	61547	Observation id
title	ACIS-456789 diagnostics	Proposal title
observer	CHANDRA engineering request/realtime commanding	Principal investig
object	 	Source name
dtcycle	0	
cycle	P	events from which exps? Prim/Second/Both
ra_targ	0.0	Observer's specified target RA [deg]
dec_targ	0.0	Observer's specified target Dec [deg]
ra_nom	169.99788941578	Nominal RA [deg]
dec_nom	-28.028582161078	Nominal Dec [deg]
roll_nom	233.60654802483	Nominal Roll [deg]
revision	3	Processing version of data
ontime	6152.3751869649	Sum of GTIs [s]
livetime	6074.4701078319	Livetime [s]
ontime4	2285.8665944487	Sum of GTIs [s]
ontime5	6648.2411371022	Sum of GTIs [s]
ontime6	2503.0157555193	Sum of GTIs [s]
ontime7	6152.3751869649	Sum of GTIs [s]
ontime8	2561.3547445685	Sum of GTIs [s]
ontime9	2442.9101376832	Sum of GTIs [s]
l2events	1320655	Number of level 2 events

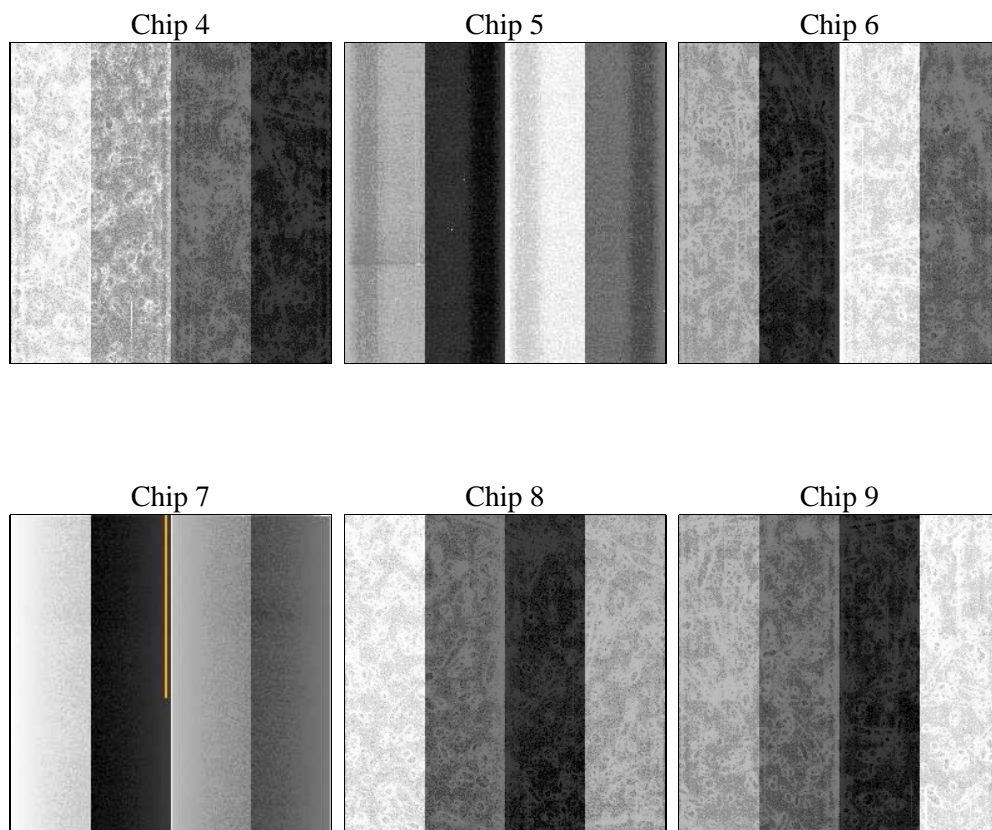
2 OBI

2.1 OBI

2.1.1 Images



2.1.2 Bias



2.1.3 Parameters

obi_num	0	Obi number	sched_exp_time	0.0	[s] Scheduled observation exposure time
ascdsver	8.4.5	Processing system revision	ontime	6152.3751869649	Sum of GTIs [s]
caldsver	4.5.1.1	 	ontime4	2285.8665944487	Sum of GTIs [s]
date	2012-09-20T12:52:15	Date and time of file creation	ontime5	6648.2411371022	Sum of GTIs [s]
revision	3	Processing version of data	ontime6	2503.0157555193	Sum of GTIs [s]
			ontime7	6152.3751869649	Sum of GTIs [s]
			ontime8	2561.3547445685	Sum of GTIs [s]
			ontime9	2442.9101376832	Sum of GTIs [s]
			l1events	1548720	Number of level 1 events

2.1.4 Events

	ccd 4	ccd 5	ccd 6	ccd 7	ccd 8	ccd 9		ccd 4	ccd 5	ccd 6	ccd 7	ccd 8	ccd 9
level 1 events	157077	418290	182827	429407	188316	172803	grade 0 events	76016	79773	88396	99849	91383	83280
rejected events	22157	52025	20995	34251	22701	20841		48%	19%	48%	23%	48%	48%
rejected %	14%	12%	11%	7%	12%	12%	grade 1 events	421	237	435	259	409	416
								0%	0%	0%	0%	0%	0%
							grade 2 events	24699	140224	28034	87486	29358	26907
								15%	33%	15%	20%	15%	15%
							grade 3 events	8030	21190	9864	40293	10298	9332
								5%	5%	5%	9%	5%	5%
							grade 4 events	8152	20538	9881	39541	10476	9297
								5%	4%	5%	9%	5%	5%
							grade 5 events	1380	9569	1495	7158	1724	1496
								0%	2%	0%	1%	0%	0%
							grade 6 events	18217	104540	25657	127987	24305	23146
								11%	24%	14%	29%	12%	13%
							grade 7 events	20162	42219	19065	26834	20363	18929
								12%	10%	10%	6%	10%	10%

2.2 Compared Parameters

Parameter	Planned	Actual
Instrument	ACIS	ACIS
Detector	ACIS-456789	ACIS-456789
Grating	NONE	NONE
Data mode	FAINT	FAINT
Observation mode	SECONDARY	SECONDARY
[deg] Pointing RA	0	169.997889415777
[deg] Pointing Dec	0	-28.02858216107764
[deg] Pointing Roll	0.0	233.6065480248277
[mm] SIM focus pos	-0.684267	-0.7809083437167272
[mm] SIM defocus	0	0.7524282956875696
[mm] SIM translation stage pos	-190.132523	250.4635187648994
[mm] SIM translation stage offset	0	-0.007540371344731511
[s] Observation start time (MET)	111511237.359	111511236.59025
Observation start date	2001-07-14T15:20:37	2001-07-14T15:20:36
[s] Observation end time (MET)	111533508.56	111533507.79112
Observation end date	2001-07-14T21:31:49	2001-07-14T21:31:47
Read mode	TIMED	TIMED

Parameter	Planned	Actual
Obspar format version number	7	7
Obspar file type	PREDICTED	ACTUAL
Obspar update status	NONE	UPDATED
On-chip summing requested	N	N
Subarray requested	NONE	NONE
Alternating exposures requested	N	N
[s] Primary exposure time	0.000000	3.2

2.3 Star Slots

2.4 FID Slots

A Summary

A.1 Status

V&V Scientist	Beth Sundheim
V&V Date (YYYY-MM-DD)	2012.09.21
V&V Edition	1
V&V Disposition and Status	OK
V&V Charge Time	6.1523751869649

A.2 Comments