

V&V Reference Report

L2 ASCDS Version : 7.6.9

Observation 61547 - L2 Version 001
Chandra X-Ray Center

L2 Processing Date : Dec 14 2006

Contents

1	Front	2
2	OBI	3
2.1	OBI	3
2.1.1	Images	3
2.1.2	Bias	3
2.1.3	Parameters	4
2.1.4	Events	4
2.2	Compared Parameters	5
2.3	Aspect	6
2.4	Star Slots	8
2.5	FID Slots	8
A	Summary	9
A.1	Status	9
A.2	Comments	9

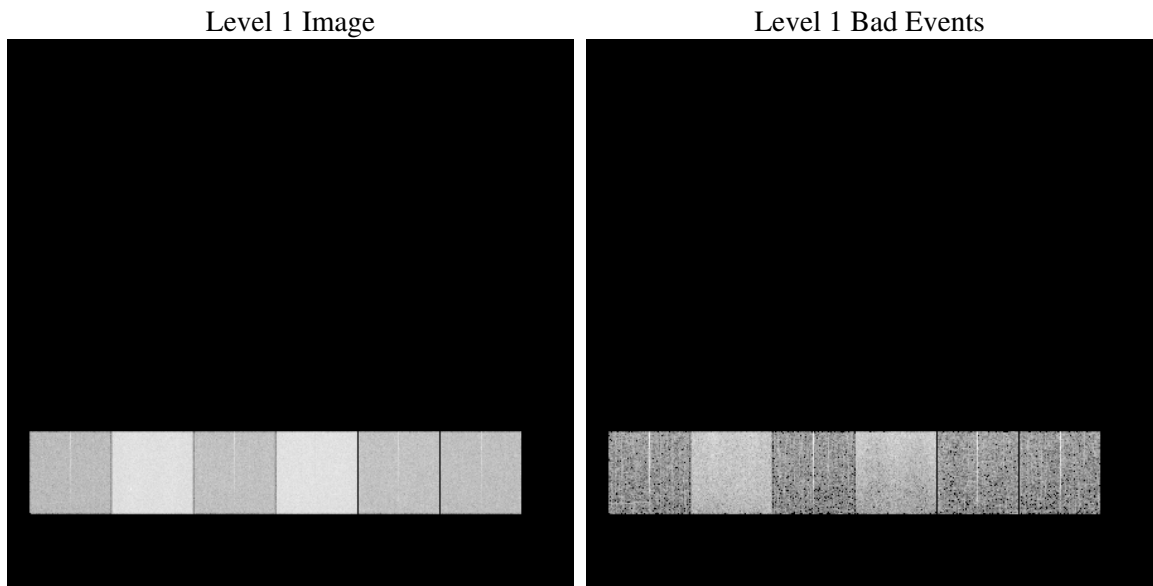
1 Front

seq_num	
obs_id	61547
title	ACIS-456789 diagnostics
observer	CHANDRA engineering request/realtime commanding
object	
dtcycle	0
cycle	P
ra_targ	0.0
dec_targ	0.0
ra_nom	169.99788941565
dec_nom	-28.028582167459
roll_nom	233.6065480247
revision	2
ontime	6152.2901995182
livetime	6074.3861965475
ontime4	2285.8665944636
ontime5	6648.1971896589
ontime6	2503.0128480643
ontime7	6152.2901995182
ontime8	2561.3547445834
ontime9	2441.3101376891
l2events	1296120

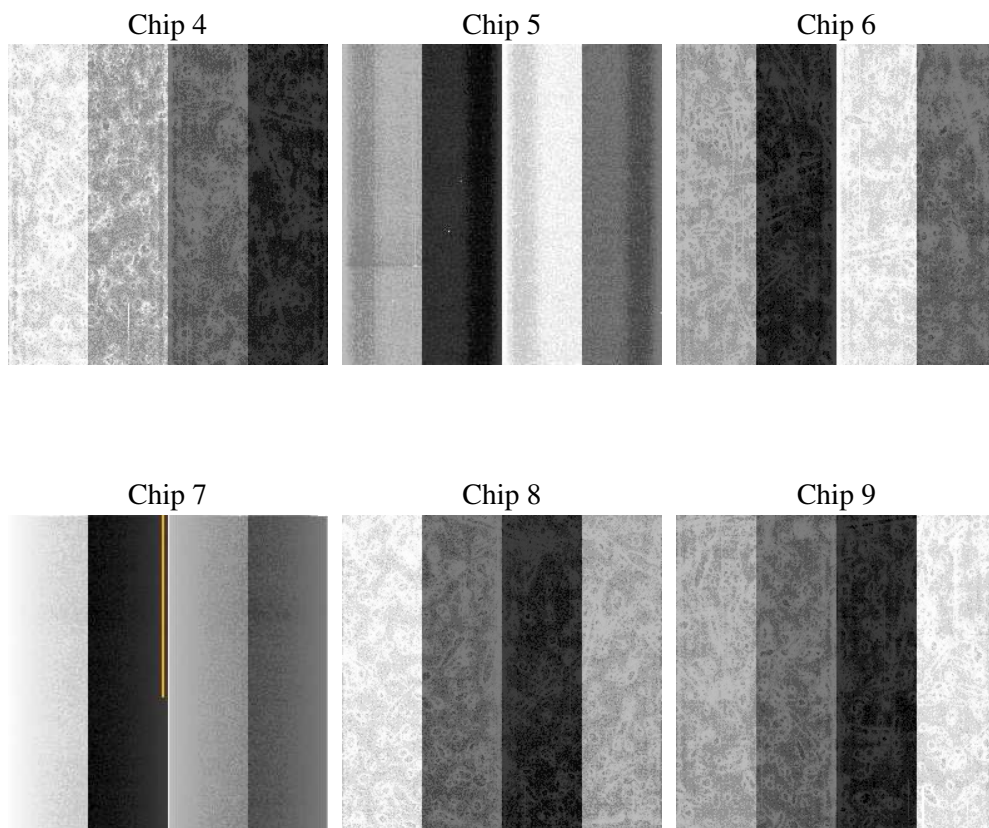
2 OBI

2.1 OBI

2.1.1 Images



2.1.2 Bias



2.1.3 Parameters

obi_num	0
ascdsver	7.6.9
caldsver	3.2.4
date	2006-12-14T16:56:28
revision	2

sched_exp_time	0.0
ontime	6154.6807428449
ontime4	2288.1721503288
ontime5	6650.5466929823
ontime6	2505.3213113993
ontime7	6154.6807428449
ontime8	2563.6603004485
ontime9	2443.7417210191
l1events	1548720

2.1.4 Events

	ccd 4	ccd 5	ccd 6	ccd 7	ccd 8	ccd 9
level 1 events	157077	418290	182827	429407	188316	172803
rejected events	22215	61913	21231	48751	22739	21062
rejected %	14%	14%	11%	11%	12%	12%

	ccd 4	ccd 5	ccd 6	ccd 7	ccd 8	ccd 9
grade 0 events	75504	39115	88020	69289	91221	83019
	48%	9%	48%	16%	48%	48%
grade 1 events	412	126	420	163	405	408
	0%	0%	0%	0%	0%	0%
grade 2 events	25212	172918	28416	115585	29521	27173
	16%	41%	15%	26%	15%	15%
grade 3 events	7975	11463	9804	28486	10250	9295
	5%	2%	5%	6%	5%	5%
grade 4 events	8095	11024	9820	27802	10445	9250
	5%	2%	5%	6%	5%	5%
grade 5 events	1391	6976	1498	6770	1713	1488
	0%	1%	0%	1%	0%	0%
grade 6 events	18279	122058	25742	139691	24359	23198
	11%	29%	14%	32%	12%	13%
grade 7 events	20209	54610	19107	41621	20402	18972
	12%	13%	10%	9%	10%	10%

2.2 Compared Parameters

Parameter	Planned	Actual	Parameter	Planned	Actual
Instrument	ACIS	ACIS	Obspar format version number	6	6
Detector	ACIS-456789	ACIS-456789	Obspar file type	PREDICTED	ACTUAL
Grating	NONE	NONE	Obspar update status	NONE	UPDATED
Data mode	FAINT	FAINT	On-chip summing requested	N	N
Observation mode	SECONDARY	SECONDARY	Subarray requested	NONE	NONE
Pointing RA	0	169.997889415649	Alternating exposures requested	N	N
Pointing Dec	0	-28.02858216745922	Primary exposure time	0.000000	3.2
Pointing Roll	0.0	233.6065480247007			
SIM focus pos (mm)	-0.684267	-0.7809083437167272			
SIM defocus (mm)	0	0.7524282956875696			
SIM translation stage pos (mm)	-190.132523	250.4635187648994			
SIM translation stage offset (mm)	0	-0.007540371344731511			
Observation start time	111511237.359	111511236.59025			
Observation start date	2001-07-14T15:20:37	2001-07-14T15:20:36			
Observation end time	111533508.56	111533507.79112			
Observation end date	2001-07-14T21:31:49	2001-07-14T21:31:47			
Read mode	TIMED	TIMED			

2.3 Aspect

2.4 Star Slots

2.5 FID Slots

A Summary

A.1 Status

V&V Scientist	Jen Lauer
V&V Date (YYYY-MM-DD)	2006.12.14
V&V Edition	1
V&V Disposition and Status	OK
V&V Charge Time	6.15229019

A.2 Comments

The ACIS focal plane temperature was above calibration limits for the entire observation.