

V&V Reference Report

L2 ASCDS Version : 7.6.9

Observation 61497 - L2 Version 001
Chandra X-Ray Center

L2 Processing Date : Dec 22 2006

Contents

1	Front	2
2	OBI	3
2.1	OBI	3
2.1.1	Images	3
2.1.2	Bias	3
2.1.3	Parameters	4
2.1.4	Events	4
2.2	Compared Parameters	5
2.3	Aspect	6
2.4	Star Slots	8
2.5	FID Slots	8
A	Summary	9
A.1	Status	9
A.2	Comments	9

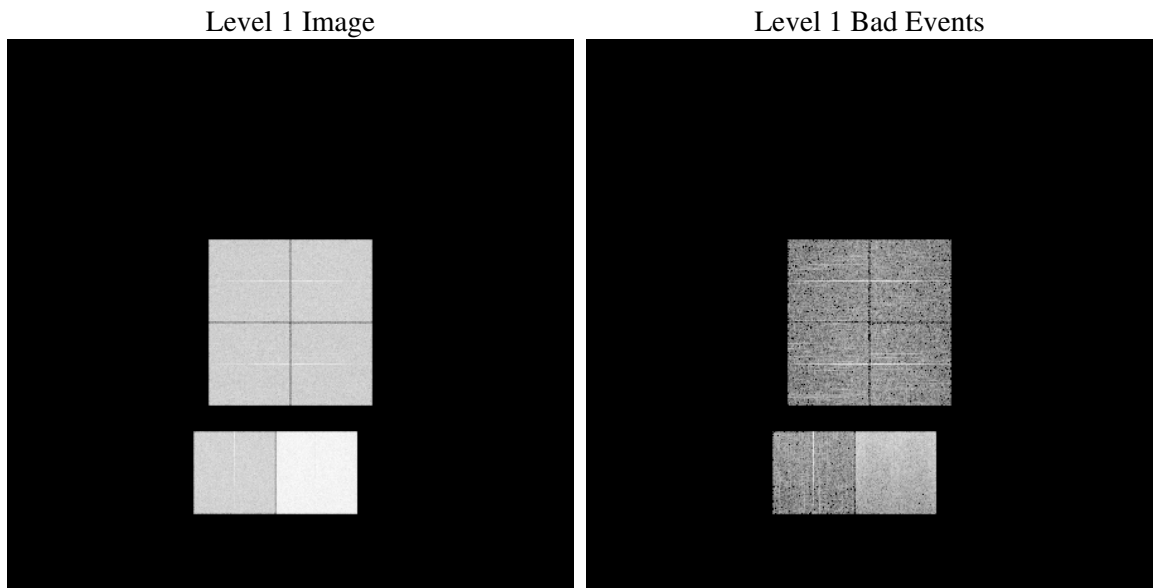
1 Front

seq_num	
obs_id	61497
title	ACIS-012367 diagnostics
observer	CHANDRA engineering request/realtime commanding
object	
dtcycle	0
cycle	P
ra_targ	0.0
dec_targ	0.0
ra_nom	353.97030385962
dec_nom	17.003925131514
roll_nom	139.36593562655
revision	2
ontime	7705.2415537536
livetime	7607.6731456605
ontime0	2898.8642050028
ontime1	3057.6747360229
ontime2	2878.1372760683
ontime3	2855.2855070829
ontime6	3106.2900965959
ontime7	7705.2415537536
l2events	1300293

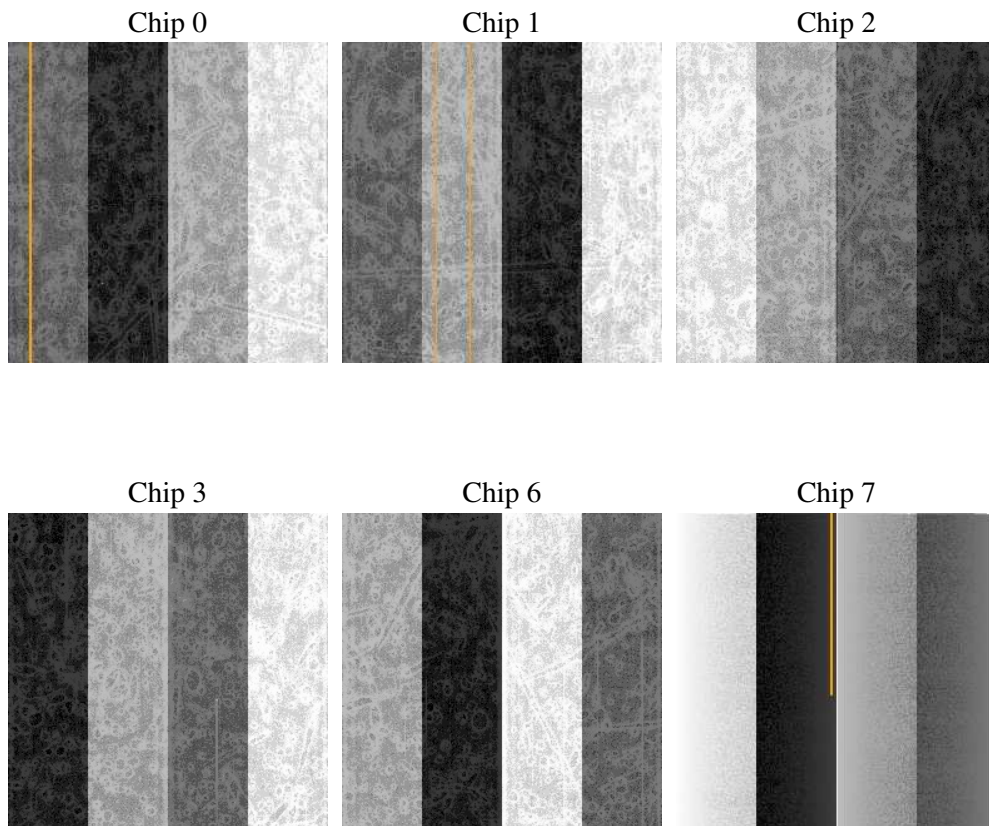
2 OBI

2.1 OBI

2.1.1 Images



2.1.2 Bias



2.1.3 Parameters

obi_num	0
ascdsver	7.6.9
caldbver	3.2.4
date	2006-12-22T03:59:29
revision	2

sched_exp_time	0.0
ontime	7739.5152321756
ontime0	2913.6919524223
ontime1	3072.5024834424
ontime2	2891.0050912499
ontime3	2871.5585222542
ontime6	3121.1178440154
ontime7	7739.5152321756
l1events	1544865

2.1.4 Events

	ccd 0	ccd 1	ccd 2	ccd 3	ccd 6	ccd 7
level 1 events	196975	207225	198905	197224	220851	523685
rejected events	23659	23738	25636	25370	27047	64376
rejected %	12%	11%	12%	12%	12%	12%

	ccd 0	ccd 1	ccd 2	ccd 3	ccd 6	ccd 7
grade 0 events	95351	101292	95618	95655	104579	79397
	48%	48%	48%	48%	47%	15%
grade 1 events	468	513	426	472	487	191
	0%	0%	0%	0%	0%	0%
grade 2 events	31529	33260	31931	31176	35236	143162
	16%	16%	16%	15%	15%	27%
grade 3 events	10704	11306	10630	11009	11614	32784
	5%	5%	5%	5%	5%	6%
grade 4 events	10767	11681	10527	10794	11886	32165
	5%	5%	5%	5%	5%	6%
grade 5 events	1612	1649	1593	1661	1913	8276
	0%	0%	0%	0%	0%	1%
grade 6 events	25933	26881	25371	24171	31477	173881
	13%	12%	12%	12%	14%	33%
grade 7 events	20611	20643	22809	22286	23659	53829
	10%	9%	11%	11%	10%	10%

2.2 Compared Parameters

Parameter	Planned	Actual	Parameter	Planned	Actual
Instrument	ACIS	ACIS	Obspar format version number	6	6
Detector	ACIS-012367	ACIS-012367	Obspar file type	PREDICTED	ACTUAL
Grating	NONE	NONE	Obspar update status	NONE	UPDATED
Data mode	FAINT	FAINT	On-chip summing requested	N	N
Observation mode	SECONDARY	SECONDARY	Subarray requested	NONE	NONE
Pointing RA	0	353.9703038596173	Alternating exposures requested	N	N
Pointing Dec	0	17.00392513151413	Primary exposure time	0.000000	3.2
Pointing Roll	0.0	139.3659356265508			
SIM focus pos (mm)	-0.782348	-0.6828225247311905			
SIM defocus (mm)	0	0.8505141146731063			
SIM translation stage pos (mm)	-233.592463	250.466033080201			
SIM translation stage offset (mm)	0	-0.01005468664627074			
Observation start time	114709190.334	114709189.56594			
Observation start date	2001-08-20T15:39:50	2001-08-20T15:39:49			
Observation end time	114731617.335	114731616.56682			
Observation end date	2001-08-20T21:53:37	2001-08-20T21:53:36			
Read mode	TIMED	TIMED			

2.3 Aspect

2.4 Star Slots

2.5 FID Slots

A Summary

A.1 Status

V&V Scientist	Jen Lauer
V&V Date (YYYY-MM-DD)	2006.12.22
V&V Edition	1
V&V Disposition and Status	OK
V&V Charge Time	7.70524155

A.2 Comments

The ACIS focal plane temperature was above calibration limits for the entire observation.