

V&V Reference Report

L2 ASCDS Version : 8.4.5

Observation 61447 - L2 Version 3
Chandra X-Ray Center

L2 Processing Date : Sep 25 2012

Contents

1	Front	2
2	OBI	3
2.1	OBI	3
2.1.1	Images	3
2.1.2	Bias	3
2.1.3	Parameters	4
2.1.4	Events	4
2.2	Compared Parameters	5
2.3	Star Slots	6
2.4	FID Slots	6
A	Summary	7
A.1	Status	7
A.2	Comments	7

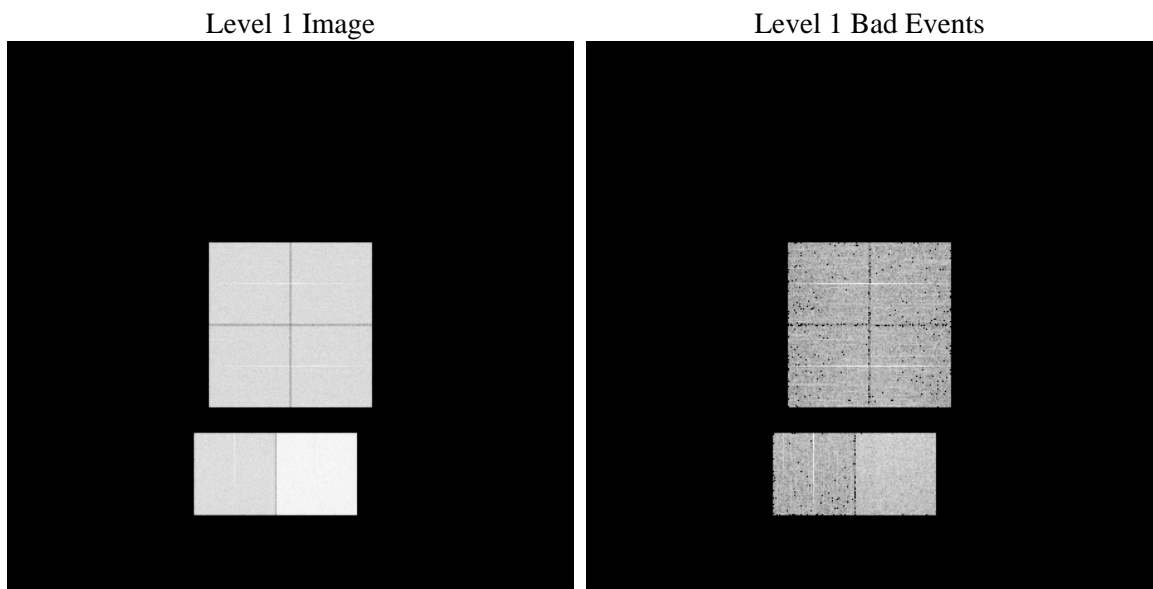
1 Front

seq_num	 	Sequence number
obs_id	61447	Observation id
title	ACIS-012367 diagnostics	Proposal title
observer	CHANDRA engineering request/realtime commanding	Principal investig
object	 	Source name
dtcycle	0	
cycle	P	events from which exps? Prim/Second/Both
ra_targ	0.0	Observer's specified target RA [deg]
dec_targ	0.0	Observer's specified target Dec [deg]
ra_nom	310.03050597141	Nominal RA [deg]
dec_nom	-40.016547071955	Nominal Dec [deg]
roll_nom	291.97392567257	Nominal Roll [deg]
revision	3	Processing version of data
ontime	7634.9237045944	Sum of GTIs [s]
livetime	7538.2457034477	Livetime [s]
ontime0	3048.9379881173	Sum of GTIs [s]
ontime1	3064.4376630038	Sum of GTIs [s]
ontime2	2925.7791560292	Sum of GTIs [s]
ontime3	2993.0124604851	Sum of GTIs [s]
ontime6	3226.5716329068	Sum of GTIs [s]
ontime7	7634.9237045944	Sum of GTIs [s]
l2events	1315475	Number of level 2 events

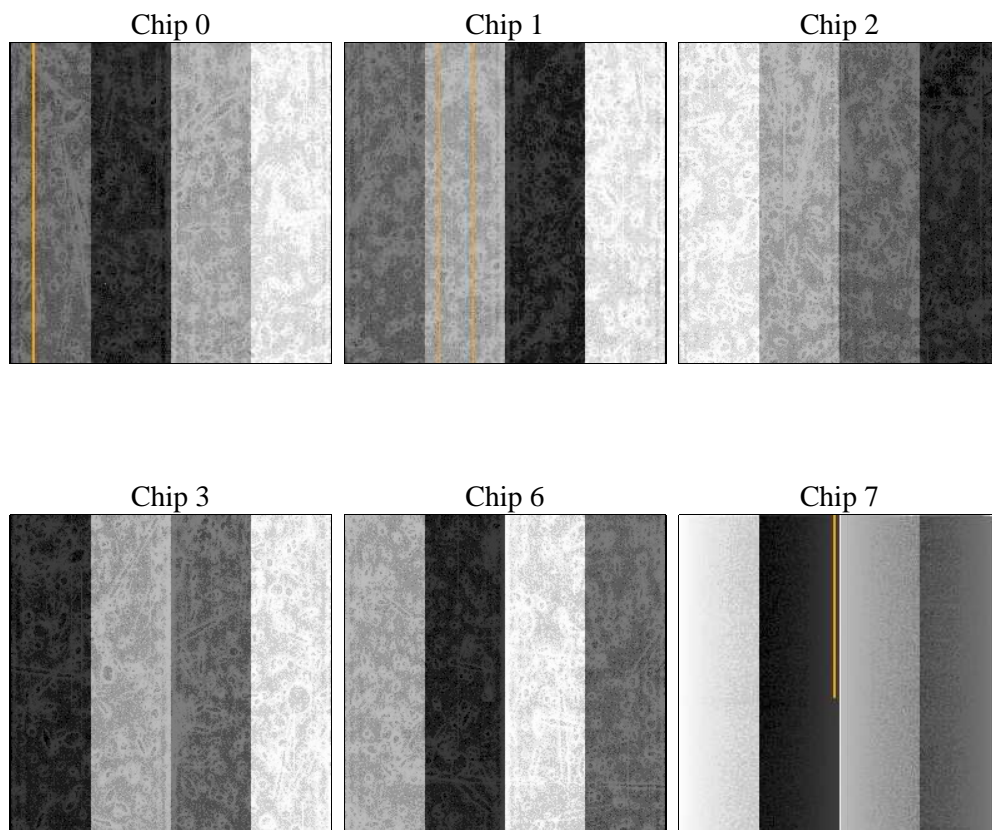
2 OBI

2.1 OBI

2.1.1 Images



2.1.2 Bias



2.1.3 Parameters

obi_num	0	Obi number	sched_exp_time	0.0	[s] Scheduled observation exposure time
ascdsver	8.4.5	Processing system revision	ontime	7634.9237045944	Sum of GTIs [s]
caldsver	4.5.1.1	 	ontime0	3048.9379881173	Sum of GTIs [s]
date	2012-09-25T06:17:56	Date and time of file creation	ontime1	3064.4376630038	Sum of GTIs [s]
revision	3	Processing version of data	ontime2	2925.7791560292	Sum of GTIs [s]
			ontime3	2993.0124604851	Sum of GTIs [s]
			ontime6	3226.5716329068	Sum of GTIs [s]
			ontime7	7634.9237045944	Sum of GTIs [s]
			l1events	1543543	Number of level 1 events

2.1.4 Events

	ccd 0	ccd 1	ccd 2	ccd 3	ccd 6	ccd 7		ccd 0	ccd 1	ccd 2	ccd 3	ccd 6	ccd 7
level 1 events	202783	204434	198094	203729	225013	509490	grade 0 events	99398	100513	98021	100959	109780	119461
rejected events	24292	24657	25077	25773	26693	46853		49%	49%	49%	49%	48%	23%
rejected %	11%	12%	12%	12%	11%	9%	grade 1 events	465	466	492	527	488	324
								0%	0%	0%	0%	0%	0%
							grade 2 events	32409	32605	30892	31725	34482	103738
								15%	15%	15%	15%	15%	20%
							grade 3 events	11344	11402	10943	11529	12287	47953
								5%	5%	5%	5%	5%	9%
							grade 4 events	11214	11529	11037	11383	12394	46930
								5%	5%	5%	5%	5%	9%
							grade 5 events	1555	1566	1537	1558	1874	8270
								0%	0%	0%	0%	0%	1%
							grade 6 events	26523	26408	24824	25051	31994	151690
								13%	12%	12%	12%	14%	29%
							grade 7 events	19875	19945	20348	20997	21714	31124
								9%	9%	10%	10%	9%	6%

2.2 Compared Parameters

Parameter	Planned	Actual	Parameter	Planned	Actual
Instrument	ACIS	ACIS	Obspar format version number	7	7
Detector	ACIS-012367	ACIS-012367	Obspar file type	PREDICTED	ACTUAL
Grating	NONE	NONE	Obspar update status	NONE	UPDATED
Data mode	FAINT	FAINT	On-chip summing requested	N	N
Observation mode	SECONDARY	SECONDARY	Subarray requested	NONE	NONE
[deg] Pointing RA	0	310.0305059714096	Alternating exposures requested	N	N
[deg] Pointing Dec	0	-40.01654707195452	[s] Primary exposure time	0.000000	3.2
[deg] Pointing Roll	0.0	291.9739256725705			
[mm] SIM focus pos	-0.782348	-0.6828225247311905			
[mm] SIM defocus	0	0.8505141146731063			
[mm] SIM translation stage pos	-233.592463	250.466033080201			
[mm] SIM translation stage offset	0	-0.01005468664627074			
[s] Observation start time (MET)	118825787.297	118825786.5288			
Observation start date	2001-10-07T07:09:47	2001-10-07T07:09:46			
[s] Observation end time (MET)	118847097.048	118847096.27964			
Observation end date	2001-10-07T13:04:57	2001-10-07T13:04:56			
Read mode	TIMED	TIMED			

2.3 Star Slots

2.4 FID Slots

A Summary

A.1 Status

V&V Scientist	Jen Lauer
V&V Date (YYYY-MM-DD)	2012.09.27
V&V Edition	1
V&V Disposition and Status	OK
V&V Charge Time	7.6349237045944

A.2 Comments