

# V&V Reference Report

## L2 ASCDS Version : 8.4.5

Observation 61427 - L2 Version 3  
Chandra X-Ray Center

L2 Processing Date : Sep 26 2012

## Contents

<b>1</b>	<b>Front</b>	<b>2</b>
<b>2</b>	<b>OBI</b>	<b>3</b>
2.1	OBI . . . . .	3
2.1.1	Images . . . . .	3
2.1.2	Bias . . . . .	3
2.1.3	Parameters . . . . .	4
2.1.4	Events . . . . .	4
2.2	Compared Parameters . . . . .	5
2.3	Star Slots . . . . .	6
2.4	FID Slots . . . . .	6
<b>A</b>	<b>Summary</b>	<b>7</b>
A.1	Status . . . . .	7
A.2	Comments . . . . .	7

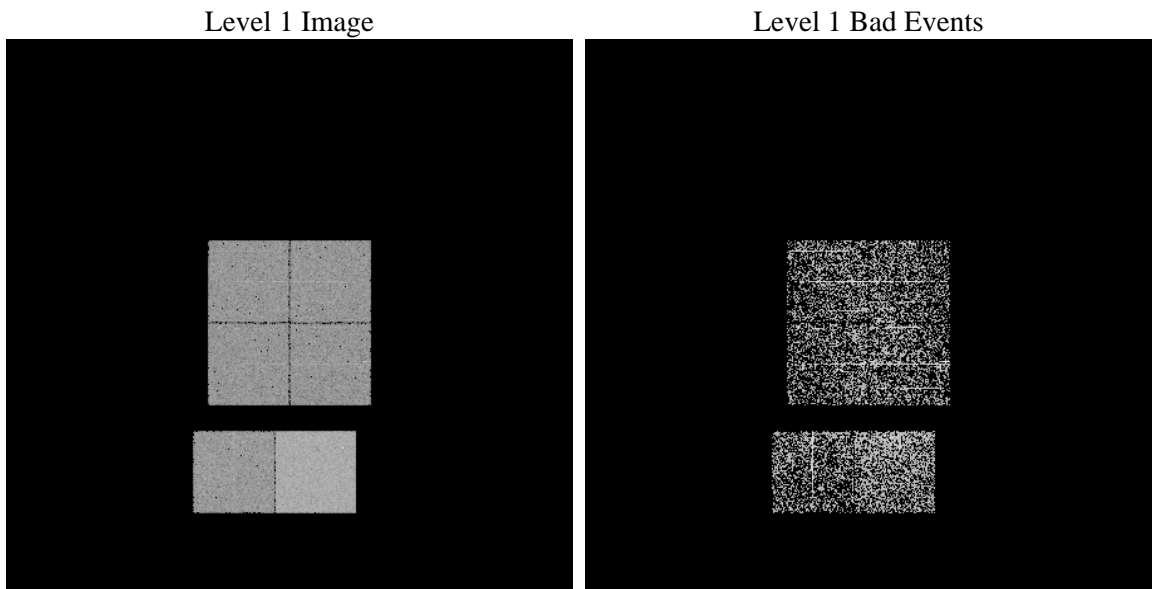
# 1 Front

seq_num	&#160	Sequence number
obs_id	61427	Observation id
title	ACIS-012367 diagnostics	Proposal title
observer	CHANDRA engineering request/realtime commanding	Principal investig
object	&#160	Source name
dtcycle	0	&#160
cycle	P	events from which exps? Prim/Second/Both
ra_targ	0.0	Observer's specified target RA [deg]
dec_targ	0.0	Observer's specified target Dec [deg]
ra_nom	59.992541883478	Nominal RA [deg]
dec_nom	4.0276514767213	Nominal Dec [deg]
roll_nom	72.316749833257	Nominal Roll [deg]
revision	3	Processing version of data
ontime	809.600000754	Sum of GTIs [s]
livetime	799.34835806186	Livetime [s]
ontime0	414.0791926682	Sum of GTIs [s]
ontime1	414.12052169442	Sum of GTIs [s]
ontime2	397.95628201962	Sum of GTIs [s]
ontime3	384.82812152803	Sum of GTIs [s]
ontime6	436.88938327134	Sum of GTIs [s]
ontime7	809.600000754	Sum of GTIs [s]
l2events	162236	Number of level 2 events

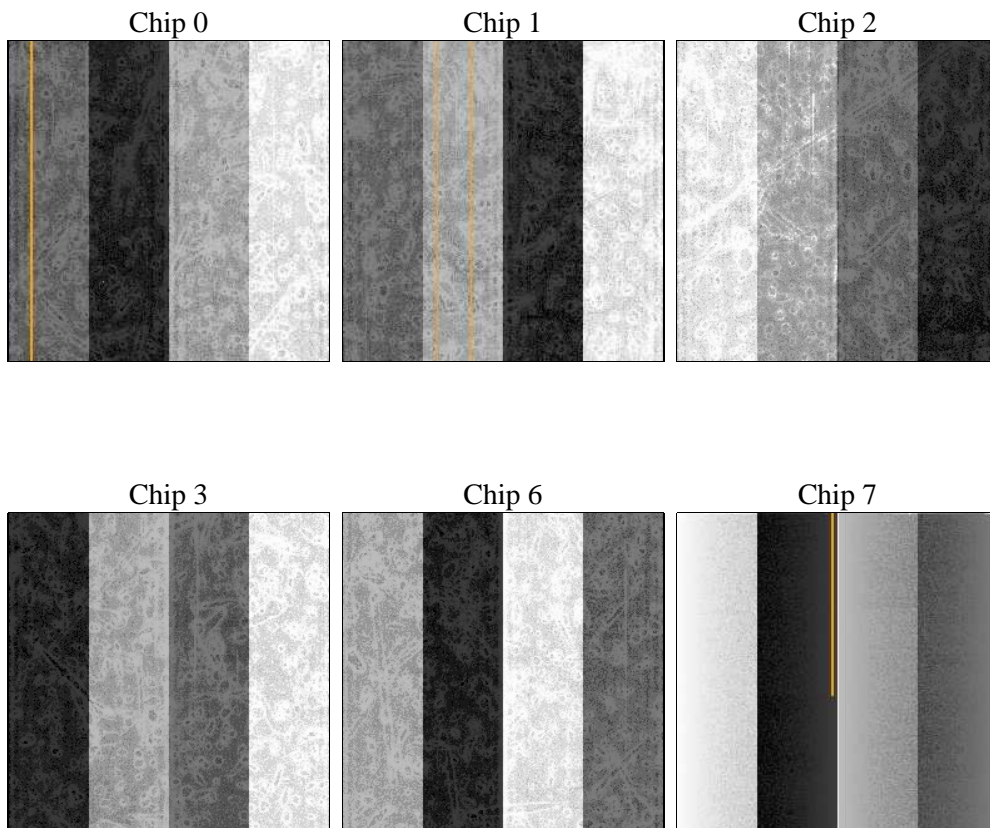
## 2 OBI

### 2.1 OBI

#### 2.1.1 Images



#### 2.1.2 Bias



### 2.1.3 Parameters

obi_num	1	Obi number	sched_exp_time	0.0	[s] Scheduled observation exposure time
ascdsver	8.4.5	Processing system revision	ontime	809.600000754	Sum of GTIs [s]
caldsver	4.5.1.1	&#160	ontime0	414.0791926682	Sum of GTIs [s]
date	2012-09-26T05:53:07	Date and time of file creation	ontime1	414.12052169442	Sum of GTIs [s]
revision	3	Processing version of data	ontime2	397.95628201962	Sum of GTIs [s]
			ontime3	384.82812152803	Sum of GTIs [s]
			ontime6	436.88938327134	Sum of GTIs [s]
			ontime7	809.600000754	Sum of GTIs [s]
			l1events	188016	Number of level 1 events

### 2.1.4 Events

	ccd 0	ccd 1	ccd 2	ccd 3	ccd 6	ccd 7
level 1 events	26697	26656	26046	25639	29670	53308
rejected events	2856	2731	2640	3065	2936	4124
rejected %	10%	10%	10%	11%	9%	7%

	ccd 0	ccd 1	ccd 2	ccd 3	ccd 6	ccd 7
grade 0 events	13172	13178	13005	12613	14597	12632
	49%	49%	49%	49%	49%	23%
grade 1 events	76	68	71	54	63	41
	0%	0%	0%	0%	0%	0%
grade 2 events	4254	4212	4201	3884	4544	10782
	15%	15%	16%	15%	15%	20%
grade 3 events	1494	1506	1449	1391	1620	5023
	5%	5%	5%	5%	5%	9%
grade 4 events	1477	1532	1436	1427	1667	4807
	5%	5%	5%	5%	5%	9%
grade 5 events	227	219	200	226	270	869
	0%	0%	0%	0%	0%	1%
grade 6 events	3444	3497	3315	3259	4307	15965
	12%	13%	12%	12%	14%	29%
grade 7 events	2553	2444	2369	2785	2602	3189
	9%	9%	9%	10%	8%	5%

## 2.2 Compared Parameters

Parameter	Planned	Actual	Parameter	Planned	Actual
Instrument	ACIS	ACIS	Obspar format version number	7	7
Detector	ACIS-012367	ACIS-012367	Obspar file type	PREDICTED	ACTUAL
Grating	NONE	NONE	Obspar update status	NONE	UPDATED
Data mode	FAINT	FAINT	On-chip summing requested	N	N
Observation mode	SECONDARY	SECONDARY	Subarray requested	NONE	NONE
[deg] Pointing RA	0	59.99254188347818	Alternating exposures requested	N	N
[deg] Pointing Dec	0	4.027651476721279	[s] Primary exposure time	3.2	3.2
[deg] Pointing Roll	0.0	72.31674983325655			
[mm] SIM focus pos	-0.782348	-0.6828225247311905			
[mm] SIM defocus	0	0.8505141146731063			
[mm] SIM translation stage pos	-233.592463	250.466033080201			
[mm] SIM translation stage offset	0	-0.01005468664627074			
[s] Observation start time (MET)	120433551.111073	120433550.34261			
Observation start date	2001-10-25T21:45:51	2001-10-25T21:45:50			
[s] Observation end time (MET)	120508782.014067	120508781.2456			
Observation end date	2001-10-26T18:39:42	2001-10-26T18:39:41			
Read mode	TIMED	TIMED			

## 2.3 Star Slots

## 2.4 FID Slots

## A Summary

### A.1 Status

V&V Scientist	Jen Lauer
V&V Date (YYYY-MM-DD)	2012.09.27
V&V Edition	1
V&V Disposition and Status	OK
V&V Charge Time	0.809600000754

### A.2 Comments