

V&V Reference Report

L2 ASCDS Version : 7.6.10

Observation 61427 - L2 Version 001
Chandra X-Ray Center

L2 Processing Date : Jan 11 2007

Contents

1	Front	2
2	OBI	3
2.1	OBI	3
2.1.1	Images	3
2.1.2	Bias	3
2.1.3	Parameters	4
2.1.4	Events	4
2.2	Compared Parameters	5
2.3	Star Slots	6
2.4	FID Slots	6
A	Summary	7
A.1	Status	7
A.2	Comments	7

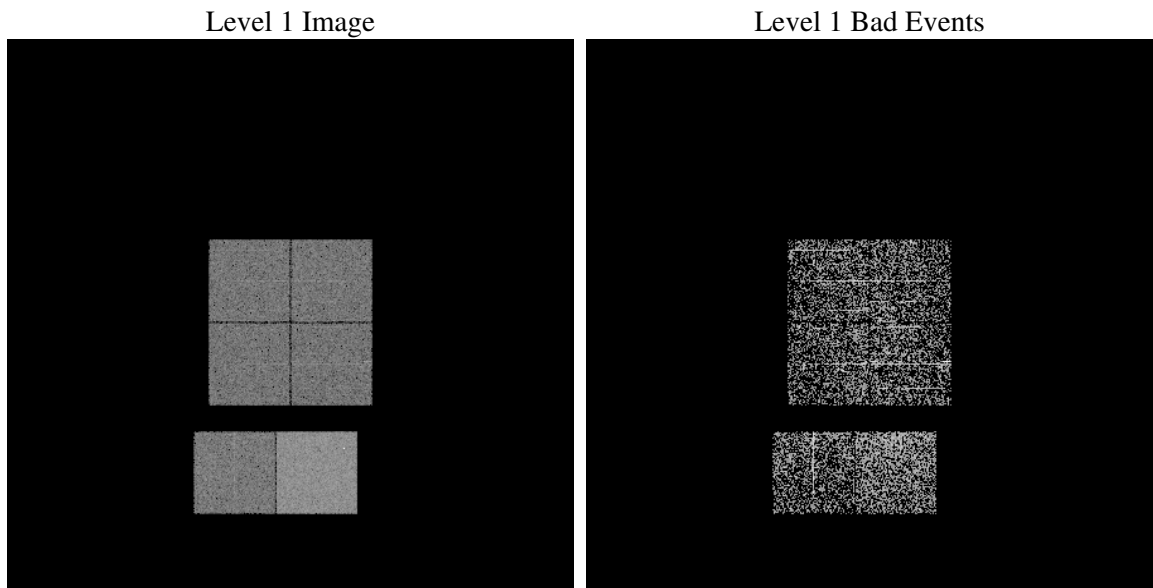
1 Front

seq_num	
obs_id	61427
title	ACIS-012367 diagnostics
observer	CHANDRA engineering request/realtime commanding
object	
dtcycle	0
cycle	P
ra_targ	0.0
dec_targ	0.0
ra_nom	59.992534380439
dec_nom	4.0276541269856
roll_nom	72.316750358031
revision	2
ontime	809.600000754
livetime	799.34835806186
ontime0	412.47919267416
ontime1	412.52052170038
ontime2	396.35628202558
ontime3	383.22812153399
ontime6	436.88787660003
ontime7	809.600000754
l2events	161093

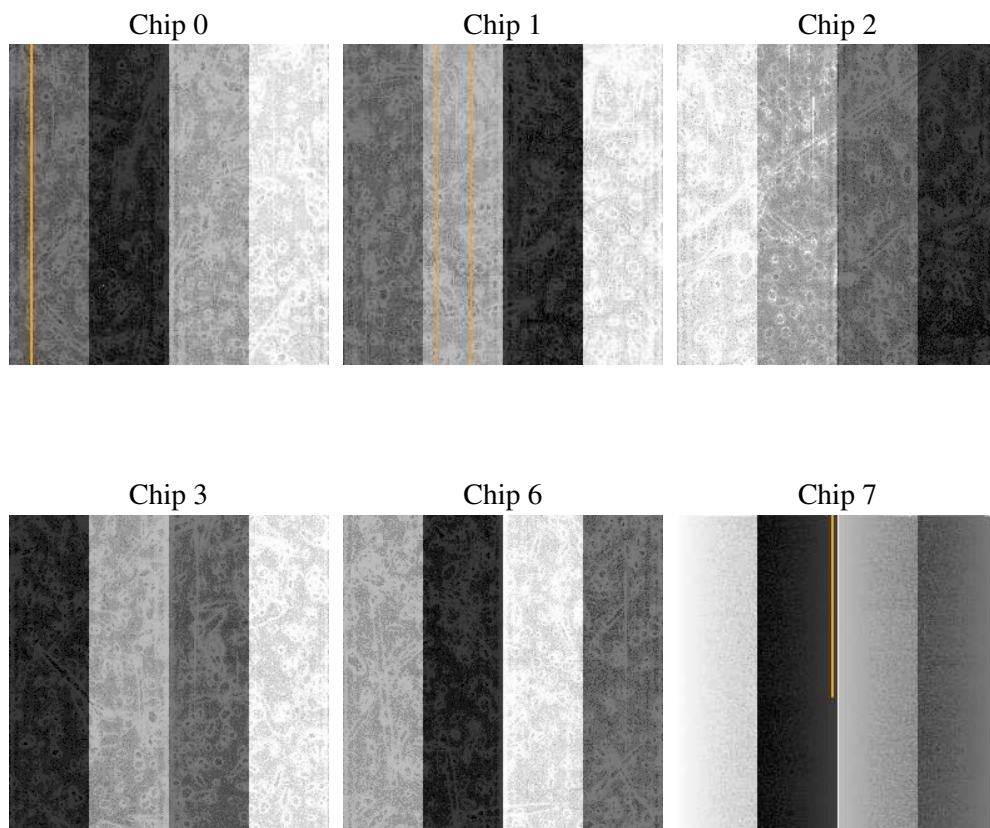
2 OBI

2.1 OBI

2.1.1 Images



2.1.2 Bias



2.1.3 Parameters

obi_num	1
ascdsver	7.6.10
caldbver	3.3.0
date	2007-01-11T04:43:04
revision	2

sched_exp_time	0.0
ontime	809.600000754
ontime0	412.47919267416
ontime1	412.52052170038
ontime2	396.35628202558
ontime3	383.22812153399
ontime6	436.88787660003
ontime7	809.600000754
l1events	188016

2.1.4 Events

	ccd 0	ccd 1	ccd 2	ccd 3	ccd 6	ccd 7
level 1 events	26697	26656	26046	25639	29670	53308
rejected events	3033	2957	2844	3250	3152	4305
rejected %	11%	11%	10%	12%	10%	8%

	ccd 0	ccd 1	ccd 2	ccd 3	ccd 6	ccd 7
grade 0 events	13172	13178	13005	12613	14597	12632
	49%	49%	49%	49%	49%	23%
grade 1 events	76	68	71	54	63	41
	0%	0%	0%	0%	0%	0%
grade 2 events	4254	4212	4201	3884	4544	10782
	15%	15%	16%	15%	15%	20%
grade 3 events	1494	1506	1449	1391	1620	5023
	5%	5%	5%	5%	5%	9%
grade 4 events	1477	1532	1436	1427	1667	4807
	5%	5%	5%	5%	5%	9%
grade 5 events	227	219	200	226	270	869
	0%	0%	0%	0%	0%	1%
grade 6 events	3444	3497	3315	3259	4307	15964
	12%	13%	12%	12%	14%	29%
grade 7 events	2553	2444	2369	2785	2602	3190
	9%	9%	9%	10%	8%	5%

2.2 Compared Parameters

Parameter	Planned	Actual	Parameter	Planned	Actual
Instrument	ACIS	ACIS	Obspar format version number	6	6
Detector	ACIS-012367	ACIS-012367	Obspar file type	PREDICTED	ACTUAL
Grating	NONE	NONE	Obspar update status	NONE	UPDATED
Data mode	FAINT	FAINT	On-chip summing requested	N	N
Observation mode	SECONDARY	SECONDARY	Subarray requested	NONE	NONE
Pointing RA	0	59.99253438043927	Alternating exposures requested	N	N
Pointing Dec	0	4.02765412698563	Primary exposure time	3.2	3.2
Pointing Roll	0.0	72.31675035803124			
SIM focus pos (mm)	-0.782348	-0.6828225247311905			
SIM defocus (mm)	0	0.8505141146731063			
SIM translation stage pos (mm)	-233.592463	250.466033080201			
SIM translation stage offset (mm)	0	-0.01005468664627074			
Observation start time	120433551.111073	120433550.34261			
Observation start date	2001-10-25T21:45:51	2001-10-25T21:45:50			
Observation end time	120508782.014067	120508781.2456			
Observation end date	2001-10-26T18:39:42	2001-10-26T18:39:41			
Read mode	TIMED	TIMED			

2.3 Star Slots

2.4 FID Slots

A Summary

A.1 Status

V&V Scientist	Jen Lauer
V&V Date (YYYY-MM-DD)	2007.01.11
V&V Edition	1
V&V Disposition and Status	OK
V&V Charge Time	0.8096

A.2 Comments